



Full wwPDB X-ray Structure Validation Report ⓘ

Jun 16, 2024 – 07:52 AM EDT

PDB ID : 4ZJN
Title : Crystal structure of the bacteriophage G20C portal protein
Authors : Williams, L.S.; Turkenburg, J.P.; Levnikov, V.M.; Minakhin, L.; Severinov, K.; Antson, A.A.
Deposited on : 2015-04-29
Resolution : 1.98 Å(reported)

This is a Full wwPDB X-ray Structure Validation Report for a publicly released PDB entry.

We welcome your comments at validation@mail.wwpdb.org

A user guide is available at

<https://www.wwpdb.org/validation/2017/XrayValidationReportHelp>

with specific help available everywhere you see the ⓘ symbol.

The types of validation reports are described at

<http://www.wwpdb.org/validation/2017/FAQs#types>.

The following versions of software and data (see [references ⓘ](#)) were used in the production of this report:

MolProbity	:	4.02b-467
Mogul	:	1.8.5 (274361), CSD as541be (2020)
Xtriage (Phenix)	:	1.13
EDS	:	2.37.1
Percentile statistics	:	20191225.v01 (using entries in the PDB archive December 25th 2019)
Refmac	:	5.8.0158
CCP4	:	7.0.044 (Gargrove)
Ideal geometry (proteins)	:	Engh & Huber (2001)
Ideal geometry (DNA, RNA)	:	Parkinson et al. (1996)
Validation Pipeline (wwPDB-VP)	:	2.37.1

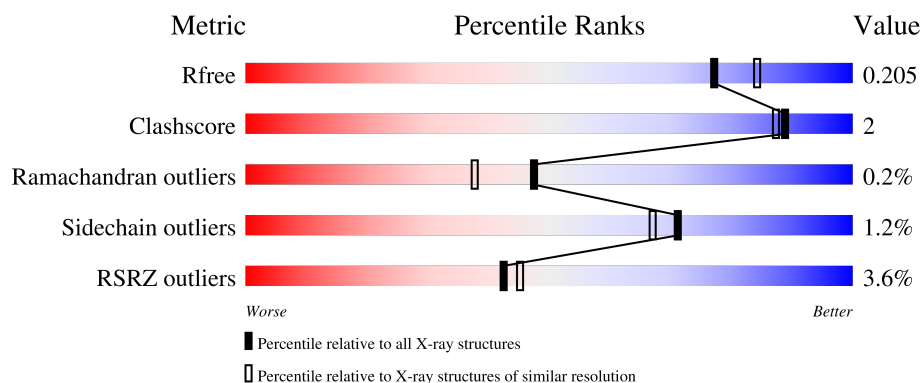
1 Overall quality at a glance

The following experimental techniques were used to determine the structure:

X-RAY DIFFRACTION

The reported resolution of this entry is 1.98 Å.

Percentile scores (ranging between 0-100) for global validation metrics of the entry are shown in the following graphic. The table shows the number of entries on which the scores are based.



Metric	Whole archive (#Entries)	Similar resolution (#Entries, resolution range(Å))
R_{free}	130704	11647 (2.00-1.96)
Clashscore	141614	1014 (1.98-1.98)
Ramachandran outliers	138981	1006 (1.98-1.98)
Sidechain outliers	138945	1006 (1.98-1.98)
RSRZ outliers	127900	11410 (2.00-1.96)

The table below summarises the geometric issues observed across the polymeric chains and their fit to the electron density. The red, orange, yellow and green segments of the lower bar indicate the fraction of residues that contain outliers for ≥ 3 , 2, 1 and 0 types of geometric quality criteria respectively. A grey segment represents the fraction of residues that are not modelled. The numeric value for each fraction is indicated below the corresponding segment, with a dot representing fractions $\leq 5\%$. The upper red bar (where present) indicates the fraction of residues that have poor fit to the electron density. The numeric value is given above the bar.

Mol	Chain	Length	Quality of chain
1	A	426	<div> <div>4%</div> <div>92%</div> <div>6%</div> <div>.</div> </div>
1	B	426	<div> <div>4%</div> <div>90%</div> <div>6%</div> <div>.</div> </div>
1	C	426	<div> <div>3%</div> <div>91%</div> <div>5%</div> <div>.</div> </div>

2 Entry composition

There are 3 unique types of molecules in this entry. The entry contains 10134 atoms, of which 0 are hydrogens and 0 are deuteriums.

In the tables below, the ZeroOcc column contains the number of atoms modelled with zero occupancy, the AltConf column contains the number of residues with at least one atom in alternate conformation and the Trace column contains the number of residues modelled with at most 2 atoms.

- Molecule 1 is a protein called Portal protein.

Mol	Chain	Residues	Atoms					ZeroOcc	AltConf	Trace
1	A	413	Total	C	N	O	S	0	5	0
			3240	2089	545	595	11			
1	B	411	Total	C	N	O	S	0	5	0
			3224	2079	543	592	10			
1	C	409	Total	C	N	O	S	0	3	0
			3201	2062	539	590	10			

There are 24 discrepancies between the modelled and reference sequences:

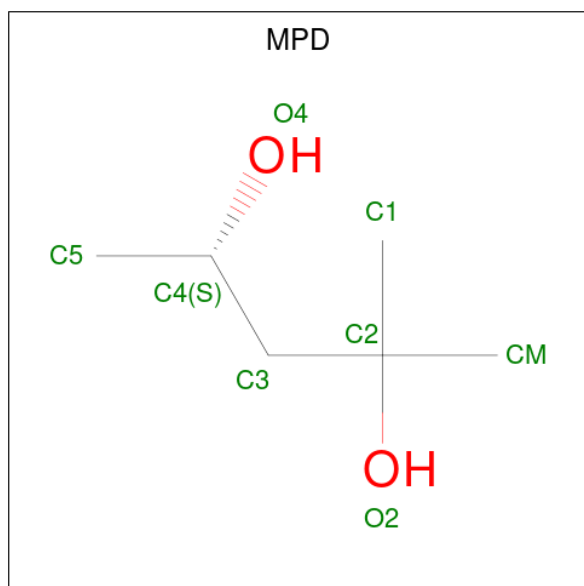
Chain	Residue	Modelled	Actual	Comment	Reference
A	13	MET	-	initiating methionine	UNP A7XXR3
A	14	GLY	-	expression tag	UNP A7XXR3
A	15	HIS	-	expression tag	UNP A7XXR3
A	16	HIS	-	expression tag	UNP A7XXR3
A	17	HIS	-	expression tag	UNP A7XXR3
A	18	HIS	-	expression tag	UNP A7XXR3
A	19	HIS	-	expression tag	UNP A7XXR3
A	20	HIS	-	expression tag	UNP A7XXR3
B	13	MET	-	initiating methionine	UNP A7XXR3
B	14	GLY	-	expression tag	UNP A7XXR3
B	15	HIS	-	expression tag	UNP A7XXR3
B	16	HIS	-	expression tag	UNP A7XXR3
B	17	HIS	-	expression tag	UNP A7XXR3
B	18	HIS	-	expression tag	UNP A7XXR3
B	19	HIS	-	expression tag	UNP A7XXR3
B	20	HIS	-	expression tag	UNP A7XXR3
C	13	MET	-	initiating methionine	UNP A7XXR3
C	14	GLY	-	expression tag	UNP A7XXR3
C	15	HIS	-	expression tag	UNP A7XXR3
C	16	HIS	-	expression tag	UNP A7XXR3
C	17	HIS	-	expression tag	UNP A7XXR3
C	18	HIS	-	expression tag	UNP A7XXR3
C	19	HIS	-	expression tag	UNP A7XXR3

Continued on next page...

Continued from previous page...

Chain	Residue	Modelled	Actual	Comment	Reference
C	20	HIS	-	expression tag	UNP A7XXR3

- Molecule 2 is (4S)-2-METHYL-2,4-PENTANEDIOL (three-letter code: MPD) (formula: $C_6H_{14}O_2$).



Mol	Chain	Residues	Atoms	ZeroOcc	AltConf
2	A	1	Total C O 8 6 2	0	0
2	B	1	Total C O 8 6 2	0	0
2	C	1	Total C O 8 6 2	0	0

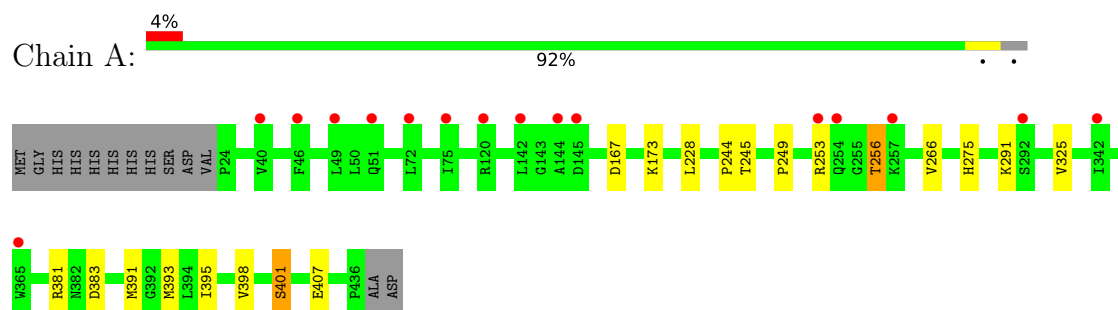
- Molecule 3 is water.

Mol	Chain	Residues	Atoms	ZeroOcc	AltConf
3	A	146	Total O 146 146	0	0
3	B	149	Total O 149 149	0	0
3	C	150	Total O 150 150	0	0

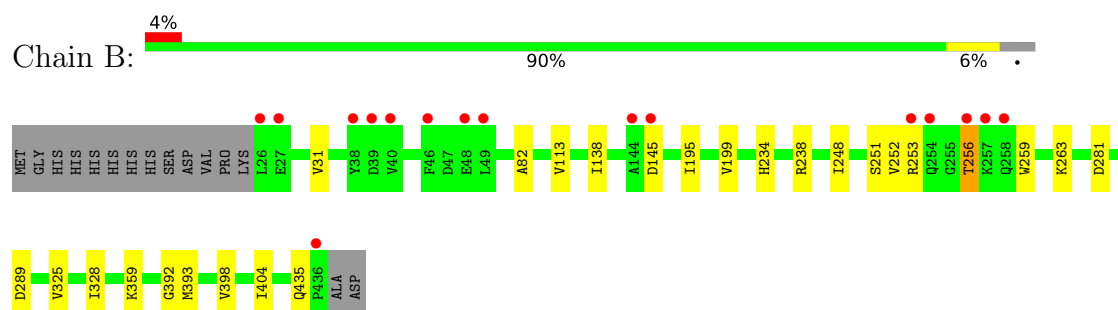
3 Residue-property plots

These plots are drawn for all protein, RNA, DNA and oligosaccharide chains in the entry. The first graphic for a chain summarises the proportions of the various outlier classes displayed in the second graphic. The second graphic shows the sequence view annotated by issues in geometry and electron density. Residues are color-coded according to the number of geometric quality criteria for which they contain at least one outlier: green = 0, yellow = 1, orange = 2 and red = 3 or more. A red dot above a residue indicates a poor fit to the electron density ($RSRZ > 2$). Stretches of 2 or more consecutive residues without any outlier are shown as a green connector. Residues present in the sample, but not in the model, are shown in grey.

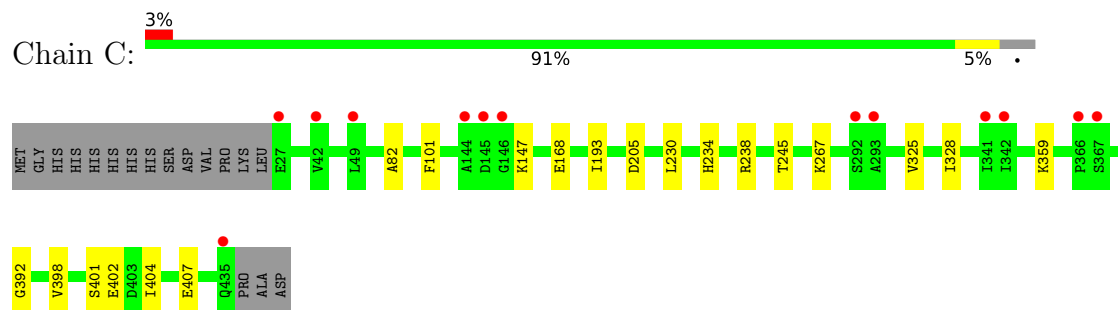
• Molecule 1: Portal protein



• Molecule 1: Portal protein



• Molecule 1: Portal protein



4 Data and refinement statistics

Property	Value	Source
Space group	P 4 21 2	Depositor
Cell constants a, b, c, α , β , γ	155.33Å 155.33Å 115.44Å 90.00° 90.00° 90.00°	Depositor
Resolution (Å)	44.40 – 1.98 44.40 – 1.98	Depositor EDS
% Data completeness (in resolution range)	99.4 (44.40-1.98) 99.5 (44.40-1.98)	Depositor EDS
R_{merge}	0.06	Depositor
R_{sym}	(Not available)	Depositor
$\langle I/\sigma(I) \rangle$ ¹	2.12 (at 1.98Å)	Xtriage
Refinement program	REFMAC 5.8.0107	Depositor
R, R_{free}	0.175 , 0.205 0.175 , 0.205	Depositor DCC
R_{free} test set	977 reflections (1.00%)	wwPDB-VP
Wilson B-factor (Å ²)	30.4	Xtriage
Anisotropy	0.027	Xtriage
Bulk solvent k_{sol} (e/Å ³), B_{sol} (Å ²)	0.34 , 44.7	EDS
L-test for twinning ²	$\langle L \rangle = 0.48$, $\langle L^2 \rangle = 0.31$	Xtriage
Estimated twinning fraction	No twinning to report.	Xtriage
F_o, F_c correlation	0.96	EDS
Total number of atoms	10134	wwPDB-VP
Average B, all atoms (Å ²)	38.0	wwPDB-VP

Xtriage's analysis on translational NCS is as follows: *The largest off-origin peak in the Patterson function is 5.39% of the height of the origin peak. No significant pseudotranslation is detected.*

¹Intensities estimated from amplitudes.

²Theoretical values of $\langle |L| \rangle$, $\langle L^2 \rangle$ for acentric reflections are 0.5, 0.333 respectively for untwinned datasets, and 0.375, 0.2 for perfectly twinned datasets.

5 Model quality [i](#)

5.1 Standard geometry [i](#)

Bond lengths and bond angles in the following residue types are not validated in this section: MPD

The Z score for a bond length (or angle) is the number of standard deviations the observed value is removed from the expected value. A bond length (or angle) with $|Z| > 5$ is considered an outlier worth inspection. RMSZ is the root-mean-square of all Z scores of the bond lengths (or angles).

Mol	Chain	Bond lengths		Bond angles	
		RMSZ	# Z >5	RMSZ	# Z >5
1	A	0.65	0/3337	0.72	0/4529
1	B	0.64	0/3319	0.71	0/4508
1	C	0.67	0/3286	0.72	2/4462 (0.0%)
All	All	0.65	0/9942	0.72	2/13499 (0.0%)

There are no bond length outliers.

All (2) bond angle outliers are listed below:

Mol	Chain	Res	Type	Atoms	Z	Observed(°)	Ideal(°)
1	C	205	ASP	CB-CG-OD1	6.19	123.87	118.30
1	C	230	LEU	CA-CB-CG	5.35	127.61	115.30

There are no chirality outliers.

There are no planarity outliers.

5.2 Too-close contacts [i](#)

In the following table, the Non-H and H(model) columns list the number of non-hydrogen atoms and hydrogen atoms in the chain respectively. The H(added) column lists the number of hydrogen atoms added and optimized by MolProbity. The Clashes column lists the number of clashes within the asymmetric unit, whereas Symm-Clashes lists symmetry-related clashes.

Mol	Chain	Non-H	H(model)	H(added)	Clashes	Symm-Clashes
1	A	3240	0	3290	13	0
1	B	3224	0	3268	19	0
1	C	3201	0	3240	16	0
2	A	8	0	14	0	0
2	B	8	0	14	0	0
2	C	8	0	14	0	0

Continued on next page...

Continued from previous page...

Mol	Chain	Non-H	H(model)	H(added)	Clashes	Symm-Clashes
3	A	146	0	0	2	0
3	B	149	0	0	0	0
3	C	150	0	0	2	0
All	All	10134	0	9840	37	0

The all-atom clashscore is defined as the number of clashes found per 1000 atoms (including hydrogen atoms). The all-atom clashscore for this structure is 2.

All (37) close contacts within the same asymmetric unit are listed below, sorted by their clash magnitude.

Atom-1	Atom-2	Interatomic distance (Å)	Clash overlap (Å)
1:C:401:SER:OG	1:C:407:GLU:HG3	1.76	0.85
1:A:245:THR:HG22	3:A:684:HOH:O	1.85	0.75
1:B:138:ILE:HD11	1:B:199[A]:VAL:HG23	1.76	0.66
1:C:168:GLU:H	1:C:168:GLU:CD	1.99	0.65
1:B:325[A]:VAL:HG11	1:C:325[A]:VAL:CG2	2.27	0.64
1:B:253:ARG:O	1:B:256:THR:OG1	2.16	0.63
1:B:328:ILE:HD12	1:C:328:ILE:HD12	1.85	0.59
1:B:325[A]:VAL:HG11	1:C:325[A]:VAL:HG23	1.86	0.57
1:A:398:VAL:O	1:A:401:SER:HB3	2.05	0.57
1:C:245[B]:THR:HG21	3:C:744:HOH:O	2.05	0.56
1:C:245[B]:THR:HG23	3:C:642:HOH:O	2.06	0.54
1:A:249:PRO:HA	1:B:281:ASP:OD2	2.08	0.54
1:A:393[B]:MET:SD	1:B:392:GLY:HA3	2.47	0.54
1:C:401:SER:HG	1:C:407:GLU:HG3	1.71	0.54
1:B:325[A]:VAL:HG11	1:C:325[A]:VAL:HG22	1.92	0.51
1:A:253:ARG:O	1:A:256:THR:OG1	2.26	0.49
1:B:248:ILE:HD12	1:B:252:VAL:HB	1.95	0.48
1:B:393:MET:SD	1:C:392:GLY:HA3	2.54	0.48
1:A:401:SER:OG	1:A:407:GLU:HG3	2.16	0.46
1:A:391:MET:O	1:A:395:ILE:HG12	2.16	0.46
1:A:325[A]:VAL:HG11	1:B:325[A]:VAL:CG2	2.47	0.45
1:C:168:GLU:CD	1:C:168:GLU:N	2.69	0.45
1:A:244:PRO:HG2	1:A:266:VAL:HG13	1.99	0.45
1:A:325[A]:VAL:HG11	1:B:325[A]:VAL:HG22	1.99	0.45
1:A:291:LYS:HD2	1:B:289:ASP:HA	2.00	0.44
3:A:686:HOH:O	1:B:113:VAL:HG13	2.16	0.44
1:B:234[A]:HIS:CD2	1:B:238:ARG:HH11	2.36	0.44
1:C:234:HIS:CE1	1:C:238:ARG:HH11	2.36	0.43
1:A:381:ARG:NH1	1:A:383[A]:ASP:OD1	2.52	0.43
1:B:398:VAL:HG23	1:B:404:ILE:HG23	2.01	0.42

Continued on next page...

Continued from previous page...

Atom-1	Atom-2	Interatomic distance (Å)	Clash overlap (Å)
1:C:267:LYS:HE2	1:C:267:LYS:HB3	1.62	0.42
1:B:31:VAL:CG2	1:C:193:ILE:HG13	2.49	0.42
1:B:256:THR:HB	1:B:259:TRP:H	1.83	0.41
1:B:259:TRP:CD1	1:B:263:LYS:HE2	2.54	0.41
1:C:101:PHE:CE1	1:C:147:LYS:HD3	2.56	0.41
1:C:398:VAL:HG23	1:C:404:ILE:HG23	2.02	0.41
1:A:167:ASP:HB3	1:A:173[A]:LYS:HG3	2.03	0.40

There are no symmetry-related clashes.

5.3 Torsion angles [i](#)

5.3.1 Protein backbone [i](#)

In the following table, the Percentiles column shows the percent Ramachandran outliers of the chain as a percentile score with respect to all X-ray entries followed by that with respect to entries of similar resolution.

The Analysed column shows the number of residues for which the backbone conformation was analysed, and the total number of residues.

Mol	Chain	Analysed	Favoured	Allowed	Outliers	Percentiles	
1	A	416/426 (98%)	405 (97%)	11 (3%)	0	100	100
1	B	414/426 (97%)	406 (98%)	7 (2%)	1 (0%)	47	38
1	C	410/426 (96%)	402 (98%)	7 (2%)	1 (0%)	47	38
All	All	1240/1278 (97%)	1213 (98%)	25 (2%)	2 (0%)	47	38

All (2) Ramachandran outliers are listed below:

Mol	Chain	Res	Type
1	B	82	ALA
1	C	82	ALA

5.3.2 Protein sidechains [i](#)

In the following table, the Percentiles column shows the percent sidechain outliers of the chain as a percentile score with respect to all X-ray entries followed by that with respect to entries of similar resolution.

The Analysed column shows the number of residues for which the sidechain conformation was

analysed, and the total number of residues.

Mol	Chain	Analysed	Rotameric	Outliers	Percentiles	
1	A	349/355 (98%)	345 (99%)	4 (1%)	73	70
1	B	347/355 (98%)	341 (98%)	6 (2%)	60	53
1	C	343/355 (97%)	341 (99%)	2 (1%)	86	85
All	All	1039/1065 (98%)	1027 (99%)	12 (1%)	71	67

All (12) residues with a non-rotameric sidechain are listed below:

Mol	Chain	Res	Type
1	A	228	LEU
1	A	256	THR
1	A	275	HIS
1	A	401	SER
1	B	145	ASP
1	B	195	ILE
1	B	251	SER
1	B	256	THR
1	B	359	LYS
1	B	435	GLN
1	C	359	LYS
1	C	402	GLU

Sometimes sidechains can be flipped to improve hydrogen bonding and reduce clashes. All (6) such sidechains are listed below:

Mol	Chain	Res	Type
1	A	204	ASN
1	A	234	HIS
1	A	389	ASN
1	B	204	ASN
1	C	234	HIS
1	C	275	HIS

5.3.3 RNA ⓘ

There are no RNA molecules in this entry.

5.4 Non-standard residues in protein, DNA, RNA chains ⓘ

There are no non-standard protein/DNA/RNA residues in this entry.

5.5 Carbohydrates

There are no monosaccharides in this entry.

5.6 Ligand geometry

3 ligands are modelled in this entry.

In the following table, the Counts columns list the number of bonds (or angles) for which Mogul statistics could be retrieved, the number of bonds (or angles) that are observed in the model and the number of bonds (or angles) that are defined in the Chemical Component Dictionary. The Link column lists molecule types, if any, to which the group is linked. The Z score for a bond length (or angle) is the number of standard deviations the observed value is removed from the expected value. A bond length (or angle) with $|Z| > 2$ is considered an outlier worth inspection. RMSZ is the root-mean-square of all Z scores of the bond lengths (or angles).

Mol	Type	Chain	Res	Link	Bond lengths			Bond angles		
					Counts	RMSZ	$\# Z > 2$	Counts	RMSZ	$\# Z > 2$
2	MPD	B	500	-	7,7,7	0.15	0	9,10,10	0.30	0
2	MPD	A	500	-	7,7,7	0.37	0	9,10,10	0.32	0
2	MPD	C	500	-	7,7,7	0.30	0	9,10,10	0.51	0

In the following table, the Chirals column lists the number of chiral outliers, the number of chiral centers analysed, the number of these observed in the model and the number defined in the Chemical Component Dictionary. Similar counts are reported in the Torsion and Rings columns. '-' means no outliers of that kind were identified.

Mol	Type	Chain	Res	Link	Chirals	Torsions	Rings
2	MPD	B	500	-	-	1/5/5/5	-
2	MPD	A	500	-	-	2/5/5/5	-
2	MPD	C	500	-	-	0/5/5/5	-

There are no bond length outliers.

There are no bond angle outliers.

There are no chirality outliers.

All (3) torsion outliers are listed below:

Mol	Chain	Res	Type	Atoms
2	A	500	MPD	CM-C2-C3-C4
2	A	500	MPD	O2-C2-C3-C4
2	B	500	MPD	O2-C2-C3-C4

There are no ring outliers.

No monomer is involved in short contacts.

5.7 Other polymers [i](#)

There are no such residues in this entry.

5.8 Polymer linkage issues [i](#)

There are no chain breaks in this entry.

6 Fit of model and data ⓘ

6.1 Protein, DNA and RNA chains ⓘ

In the following table, the column labelled ‘#RSRZ > 2’ contains the number (and percentage) of RSRZ outliers, followed by percent RSRZ outliers for the chain as percentile scores relative to all X-ray entries and entries of similar resolution. The OWAB column contains the minimum, median, 95th percentile and maximum values of the occupancy-weighted average B-factor per residue. The column labelled ‘Q < 0.9’ lists the number of (and percentage) of residues with an average occupancy less than 0.9.

Mol	Chain	Analysed	<RSRZ>	#RSRZ>2	OWAB(Å ²)	Q<0.9
1	A	413/426 (96%)	0.05	16 (3%) 39 42	18, 37, 66, 91	0
1	B	411/426 (96%)	-0.07	16 (3%) 39 42	18, 36, 66, 91	0
1	C	409/426 (96%)	0.03	13 (3%) 47 50	17, 36, 62, 100	0
All	All	1233/1278 (96%)	0.00	45 (3%) 42 45	17, 36, 65, 100	0

All (45) RSRZ outliers are listed below:

Mol	Chain	Res	Type	RSRZ
1	B	26	LEU	6.1
1	B	257	LYS	4.8
1	C	144	ALA	4.6
1	C	49	LEU	4.2
1	A	49	LEU	4.0
1	A	144	ALA	4.0
1	C	27	GLU	3.9
1	B	40	VAL	3.9
1	B	144	ALA	3.8
1	C	145	ASP	3.7
1	A	120[A]	ARG	3.7
1	A	253	ARG	3.7
1	A	145	ASP	3.6
1	B	39	ASP	3.2
1	B	27	GLU	3.1
1	B	253	ARG	3.1
1	C	292	SER	3.1
1	B	46	PHE	2.9
1	A	254	GLN	2.9
1	A	142	LEU	2.8
1	B	436	PRO	2.7
1	A	257	LYS	2.7
1	B	258	GLN	2.7

Continued on next page...

Continued from previous page...

Mol	Chain	Res	Type	RSRZ
1	A	46	PHE	2.6
1	C	42	VAL	2.5
1	A	292	SER	2.5
1	C	366	PRO	2.4
1	C	367	SER	2.4
1	B	38	TYR	2.4
1	C	435	GLN	2.4
1	B	256	THR	2.4
1	C	293	ALA	2.3
1	C	146	GLY	2.3
1	B	145	ASP	2.3
1	A	342	ILE	2.2
1	B	254	GLN	2.2
1	A	72	LEU	2.2
1	A	40	VAL	2.2
1	C	342	ILE	2.2
1	A	51	GLN	2.1
1	A	365	TRP	2.1
1	B	49	LEU	2.1
1	C	341	ILE	2.0
1	B	48	GLU	2.0
1	A	75	ILE	2.0

6.2 Non-standard residues in protein, DNA, RNA chains [i](#)

There are no non-standard protein/DNA/RNA residues in this entry.

6.3 Carbohydrates [i](#)

There are no monosaccharides in this entry.

6.4 Ligands [i](#)

In the following table, the Atoms column lists the number of modelled atoms in the group and the number defined in the chemical component dictionary. The B-factors column lists the minimum, median, 95th percentile and maximum values of B factors of atoms in the group. The column labelled 'Q< 0.9' lists the number of atoms with occupancy less than 0.9.

Mol	Type	Chain	Res	Atoms	RSCC	RSR	B-factors(Å ²)	Q<0.9
2	MPD	C	500	8/8	0.88	0.19	39,42,48,48	0

Continued on next page...

Continued from previous page...

Mol	Type	Chain	Res	Atoms	RSCC	RSR	B-factors(\AA^2)	Q<0.9
2	MPD	B	500	8/8	0.90	0.16	43,48,54,60	0
2	MPD	A	500	8/8	0.92	0.17	39,44,49,53	0

6.5 Other polymers [i](#)

There are no such residues in this entry.