



Full wwPDB X-ray Structure Validation Report ⓘ

Oct 1, 2024 – 07:20 PM JST

PDB ID : 5ZIB
Title : Crystal structure of human GnT-V luminal domain in apo form
Authors : Nagae, M.; Yamaguchi, Y.
Deposited on : 2018-03-14
Resolution : 1.90 Å(reported)

This is a Full wwPDB X-ray Structure Validation Report for a publicly released PDB entry.

We welcome your comments at validation@mail.wwpdb.org

A user guide is available at

<https://www.wwpdb.org/validation/2017/XrayValidationReportHelp>

with specific help available everywhere you see the ⓘ symbol.

The types of validation reports are described at

<http://www.wwpdb.org/validation/2017/FAQs#types>.

The following versions of software and data (see [references ⓘ](#)) were used in the production of this report:

MolProbity	:	4.02b-467
Mogul	:	1.8.5 (274361), CSD as541be (2020)
Xtriage (Phenix)	:	1.13
EDS	:	3.0
Percentile statistics	:	20231227.v01 (using entries in the PDB archive December 27th 2023)
CCP4	:	9.0.003 (Gargrove)
Density-Fitness	:	1.0.11
Ideal geometry (proteins)	:	Engh & Huber (2001)
Ideal geometry (DNA, RNA)	:	Parkinson et al. (1996)
Validation Pipeline (wwPDB-VP)	:	2.39

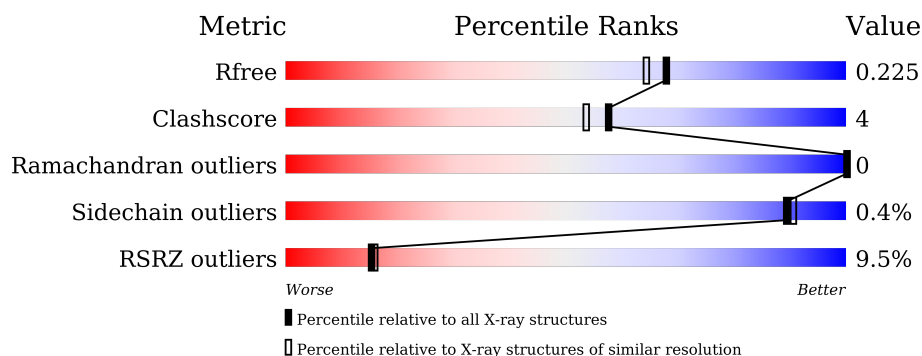
1 Overall quality at a glance

The following experimental techniques were used to determine the structure:

X-RAY DIFFRACTION

The reported resolution of this entry is 1.90 Å.

Percentile scores (ranging between 0-100) for global validation metrics of the entry are shown in the following graphic. The table shows the number of entries on which the scores are based.



Metric	Whole archive (#Entries)	Similar resolution (#Entries, resolution range(Å))
R_{free}	164625	7293 (1.90-1.90)
Clashscore	180529	8090 (1.90-1.90)
Ramachandran outliers	177936	8022 (1.90-1.90)
Sidechain outliers	177891	8022 (1.90-1.90)
RSRZ outliers	164620	7292 (1.90-1.90)

The table below summarises the geometric issues observed across the polymeric chains and their fit to the electron density. The red, orange, yellow and green segments of the lower bar indicate the fraction of residues that contain outliers for ≥ 3 , 2, 1 and 0 types of geometric quality criteria respectively. A grey segment represents the fraction of residues that are not modelled. The numeric value for each fraction is indicated below the corresponding segment, with a dot representing fractions $\leq 5\%$. The upper red bar (where present) indicates the fraction of residues that have poor fit to the electron density. The numeric value is given above the bar.

Mol	Chain	Length	Quality of chain
1	A	626	<div> <div>9%</div> <div>83%</div> <div>10%</div> <div>8%</div> </div>

2 Entry composition [i](#)

There are 3 unique types of molecules in this entry. The entry contains 5019 atoms, of which 0 are hydrogens and 0 are deuteriums.

In the tables below, the ZeroOcc column contains the number of atoms modelled with zero occupancy, the AltConf column contains the number of residues with at least one atom in alternate conformation and the Trace column contains the number of residues modelled with at most 2 atoms.

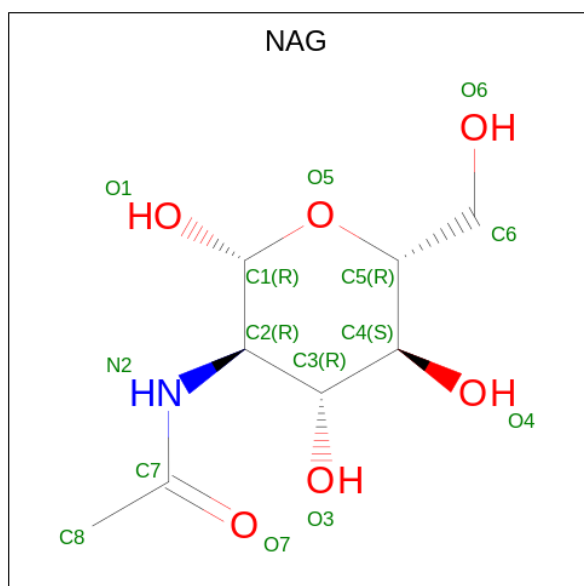
- Molecule 1 is a protein called Alpha-1,6-mannosylglycoprotein 6-beta-N-acetylglucosaminyl transferase A.

Mol	Chain	Residues	Atoms					ZeroOcc	AltConf	Trace
			Total	C	N	O	S			
1	A	579	4711	3033	806	836	36	0	1	0

There are 5 discrepancies between the modelled and reference sequences:

Chain	Residue	Modelled	Actual	Comment	Reference
A	116	GLY	-	expression tag	UNP Q09328
A	117	LYS	-	expression tag	UNP Q09328
A	118	ASP	-	expression tag	UNP Q09328
A	119	GLY	-	expression tag	UNP Q09328
A	120	SER	-	expression tag	UNP Q09328

- Molecule 2 is 2-acetamido-2-deoxy-beta-D-glucopyranose (three-letter code: NAG) (formula: $C_8H_{15}NO_6$).



Mol	Chain	Residues	Atoms				ZeroOcc	AltConf
2	A	1	Total	C	N	O	0	0
			14	8	1	5		

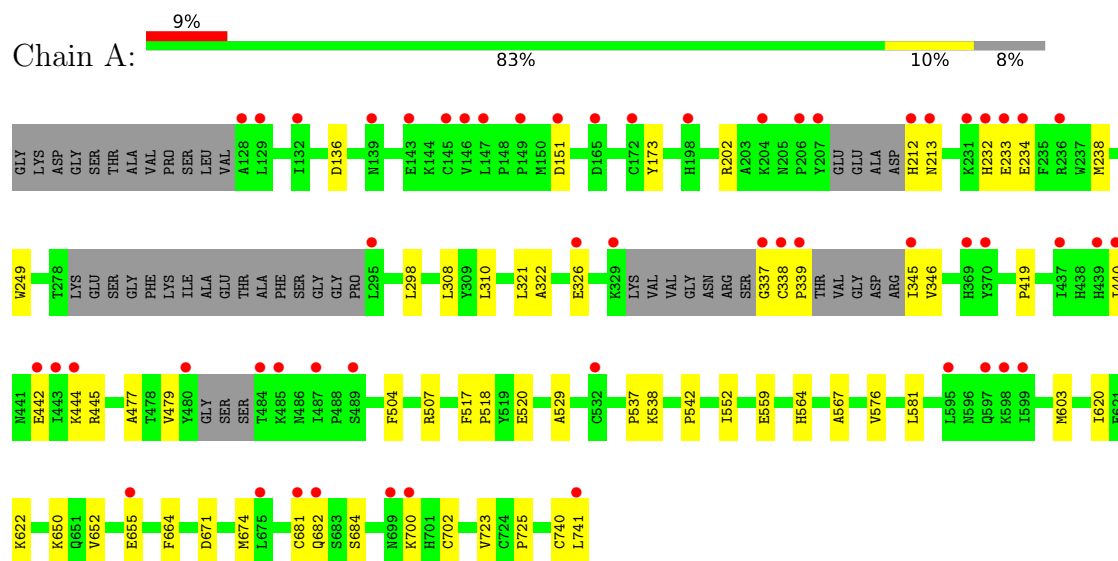
- Molecule 3 is water.

Mol	Chain	Residues	Atoms		ZeroOcc	AltConf
3	A	294	Total	O	0	0
			294	294		

3 Residue-property plots [i](#)

These plots are drawn for all protein, RNA, DNA and oligosaccharide chains in the entry. The first graphic for a chain summarises the proportions of the various outlier classes displayed in the second graphic. The second graphic shows the sequence view annotated by issues in geometry and electron density. Residues are color-coded according to the number of geometric quality criteria for which they contain at least one outlier: green = 0, yellow = 1, orange = 2 and red = 3 or more. A red dot above a residue indicates a poor fit to the electron density ($RSRZ > 2$). Stretches of 2 or more consecutive residues without any outlier are shown as a green connector. Residues present in the sample, but not in the model, are shown in grey.

- Molecule 1: Alpha-1,6-mannosylglycoprotein 6-beta-N-acetylglucosaminyltransferase A



4 Data and refinement statistics

Property	Value	Source
Space group	P 65 2 2	Depositor
Cell constants a, b, c, α , β , γ	97.67Å 97.67Å 268.86Å 90.00° 90.00° 120.00°	Depositor
Resolution (Å)	48.05 – 1.90 48.05 – 1.90	Depositor EDS
% Data completeness (in resolution range)	100.0 (48.05-1.90) 100.0 (48.05-1.90)	Depositor EDS
R_{merge}	(Not available)	Depositor
R_{sym}	(Not available)	Depositor
$\langle I/\sigma(I) \rangle$ ¹	1.49 (at 1.90Å)	Xtriage
Refinement program	PHENIX (1.10.1_2155: ???)	Depositor
R, R_{free}	0.189 , 0.224 0.190 , 0.225	Depositor DCC
R_{free} test set	3093 reflections (5.10%)	wwPDB-VP
Wilson B-factor (Å ²)	23.0	Xtriage
Anisotropy	0.029	Xtriage
Bulk solvent k_{sol} (e/Å ³), B_{sol} (Å ²)	0.37 , 43.7	EDS
L-test for twinning ²	$\langle L \rangle = 0.48$, $\langle L^2 \rangle = 0.31$	Xtriage
Estimated twinning fraction	No twinning to report.	Xtriage
F_o, F_c correlation	0.95	EDS
Total number of atoms	5019	wwPDB-VP
Average B, all atoms (Å ²)	30.0	wwPDB-VP

Xtriage's analysis on translational NCS is as follows: *The largest off-origin peak in the Patterson function is 3.25% of the height of the origin peak. No significant pseudotranslation is detected.*

¹Intensities estimated from amplitudes.

²Theoretical values of $\langle |L| \rangle$, $\langle L^2 \rangle$ for acentric reflections are 0.5, 0.333 respectively for untwinned datasets, and 0.375, 0.2 for perfectly twinned datasets.

5 Model quality [i](#)

5.1 Standard geometry [i](#)

Bond lengths and bond angles in the following residue types are not validated in this section: NAG

The Z score for a bond length (or angle) is the number of standard deviations the observed value is removed from the expected value. A bond length (or angle) with $|Z| > 5$ is considered an outlier worth inspection. RMSZ is the root-mean-square of all Z scores of the bond lengths (or angles).

Mol	Chain	Bond lengths		Bond angles	
		RMSZ	$\# Z > 5$	RMSZ	$\# Z > 5$
1	A	0.38	0/4838	0.53	0/6540

There are no bond length outliers.

There are no bond angle outliers.

There are no chirality outliers.

There are no planarity outliers.

5.2 Too-close contacts [i](#)

In the following table, the Non-H and H(model) columns list the number of non-hydrogen atoms and hydrogen atoms in the chain respectively. The H(added) column lists the number of hydrogen atoms added and optimized by MolProbity. The Clashes column lists the number of clashes within the asymmetric unit, whereas Symm-Clashes lists symmetry-related clashes.

Mol	Chain	Non-H	H(model)	H(added)	Clashes	Symm-Clashes
1	A	4711	0	4647	41	0
2	A	14	0	13	0	0
3	A	294	0	0	2	0
All	All	5019	0	4660	41	0

The all-atom clashscore is defined as the number of clashes found per 1000 atoms (including hydrogen atoms). The all-atom clashscore for this structure is 4.

All (41) close contacts within the same asymmetric unit are listed below, sorted by their clash magnitude.

Atom-1	Atom-2	Interatomic distance (Å)	Clash overlap (Å)
1:A:444:LYS:NZ	1:A:445:ARG:O	2.19	0.73

Continued on next page...

Continued from previous page...

Atom-1	Atom-2	Interatomic distance (Å)	Clash overlap (Å)
1:A:232:HIS:HD2	1:A:233:GLU:H	1.41	0.69
1:A:212:HIS:CG	1:A:213:ASN:H	2.12	0.68
1:A:173:TYR:HH	1:A:337:GLY:N	1.93	0.66
1:A:542:PRO:HB2	1:A:559:GLU:HB3	1.78	0.65
1:A:232:HIS:CD2	1:A:233:GLU:H	2.18	0.61
1:A:232:HIS:NE2	1:A:234:GLU:OE1	2.35	0.59
1:A:740:CYS:O	1:A:741:LEU:HB2	2.03	0.59
1:A:345:ILE:HG13	1:A:346:VAL:H	1.66	0.59
1:A:682:GLN:HG2	1:A:700:LYS:HB2	1.84	0.57
1:A:136:ASP:HB3	1:A:202:ARG:HH22	1.70	0.55
1:A:440:ILE:HD13	1:A:507:ARG:HG3	1.89	0.54
1:A:308:LEU:HD23	1:A:620:ILE:HD11	1.90	0.52
1:A:249:TRP:HB3	1:A:310:LEU:HD11	1.92	0.52
1:A:652:VAL:O	1:A:655:GLU:OE2	2.27	0.51
1:A:664:PHE:HB2	1:A:725:PRO:HB2	1.94	0.50
1:A:622:LYS:HE2	1:A:741:LEU:HD13	1.94	0.49
1:A:529:ALA:HB2	1:A:603:MET:HE2	1.94	0.48
1:A:552:ILE:HD12	3:A:1266:HOH:O	2.12	0.48
1:A:322:ALA:O	1:A:326:GLU:HG2	2.14	0.48
1:A:538:LYS:HG3	3:A:1157:HOH:O	2.14	0.48
1:A:655:GLU:OE2	1:A:655:GLU:N	2.47	0.47
1:A:520:GLU:HA	1:A:564:HIS:CD2	2.50	0.47
1:A:337:GLY:HA3	1:A:339:PRO:HD3	1.97	0.46
1:A:232:HIS:CD2	1:A:234:GLU:OE1	2.70	0.45
1:A:419:PRO:HD2	1:A:650:LYS:HD3	1.98	0.44
1:A:671:ASP:OD1	1:A:681:CYS:HB2	2.17	0.44
1:A:212:HIS:CG	1:A:213:ASN:N	2.79	0.44
1:A:232:HIS:CD2	1:A:233:GLU:N	2.86	0.44
1:A:337:GLY:HA3	1:A:338:CYS:HA	1.58	0.44
1:A:212:HIS:CE1	1:A:213:ASN:HD22	2.36	0.43
1:A:684:SER:HA	1:A:702:CYS:O	2.17	0.43
1:A:298:LEU:HD23	1:A:298:LEU:HA	1.89	0.42
1:A:537:PRO:HB3	1:A:581:LEU:HD23	2.01	0.42
1:A:517:PHE:CG	1:A:518:PRO:HA	2.55	0.42
1:A:440:ILE:HD11	1:A:504:PHE:CD1	2.55	0.42
1:A:477:ALA:HB1	1:A:479:VAL:HG23	2.01	0.42
1:A:238:MET:HB3	1:A:238:MET:HE2	1.75	0.41
1:A:321:LEU:HD23	1:A:321:LEU:HA	1.91	0.41
1:A:674:MET:HE1	1:A:723:VAL:HG11	2.02	0.41
1:A:567:ALA:HB1	1:A:576:VAL:HG21	2.02	0.41

There are no symmetry-related clashes.

5.3 Torsion angles

5.3.1 Protein backbone

In the following table, the Percentiles column shows the percent Ramachandran outliers of the chain as a percentile score with respect to all X-ray entries followed by that with respect to entries of similar resolution.

The Analysed column shows the number of residues for which the backbone conformation was analysed, and the total number of residues.

Mol	Chain	Analysed	Favoured	Allowed	Outliers	Percentiles	
1	A	568/626 (91%)	558 (98%)	10 (2%)	0	100	100

There are no Ramachandran outliers to report.

5.3.2 Protein sidechains

In the following table, the Percentiles column shows the percent sidechain outliers of the chain as a percentile score with respect to all X-ray entries followed by that with respect to entries of similar resolution.

The Analysed column shows the number of residues for which the sidechain conformation was analysed, and the total number of residues.

Mol	Chain	Analysed	Rotameric	Outliers	Percentiles	
1	A	520/554 (94%)	518 (100%)	2 (0%)	89	90

All (2) residues with a non-rotameric sidechain are listed below:

Mol	Chain	Res	Type
1	A	151	ASP
1	A	442	GLU

Sometimes sidechains can be flipped to improve hydrogen bonding and reduce clashes. All (2) such sidechains are listed below:

Mol	Chain	Res	Type
1	A	213	ASN
1	A	232	HIS

5.3.3 RNA

There are no RNA molecules in this entry.

5.4 Non-standard residues in protein, DNA, RNA chains [i](#)

There are no non-standard protein/DNA/RNA residues in this entry.

5.5 Carbohydrates [i](#)

There are no oligosaccharides in this entry.

5.6 Ligand geometry [i](#)

1 ligand is modelled in this entry.

In the following table, the Counts columns list the number of bonds (or angles) for which Mogul statistics could be retrieved, the number of bonds (or angles) that are observed in the model and the number of bonds (or angles) that are defined in the Chemical Component Dictionary. The Link column lists molecule types, if any, to which the group is linked. The Z score for a bond length (or angle) is the number of standard deviations the observed value is removed from the expected value. A bond length (or angle) with $|Z| > 2$ is considered an outlier worth inspection. RMSZ is the root-mean-square of all Z scores of the bond lengths (or angles).

Mol	Type	Chain	Res	Link	Bond lengths			Bond angles		
					Counts	RMSZ	$\# Z > 2$	Counts	RMSZ	$\# Z > 2$
2	NAG	A	1001	1	14,14,15	0.31	0	17,19,21	0.98	1 (5%)

In the following table, the Chirals column lists the number of chiral outliers, the number of chiral centers analysed, the number of these observed in the model and the number defined in the Chemical Component Dictionary. Similar counts are reported in the Torsion and Rings columns. '-' means no outliers of that kind were identified.

Mol	Type	Chain	Res	Link	Chirals	Torsions	Rings
2	NAG	A	1001	1	-	2/6/23/26	0/1/1/1

There are no bond length outliers.

All (1) bond angle outliers are listed below:

Mol	Chain	Res	Type	Atoms	Z	Observed(°)	Ideal(°)
2	A	1001	NAG	C1-O5-C5	3.29	116.65	112.19

There are no chirality outliers.

All (2) torsion outliers are listed below:

Mol	Chain	Res	Type	Atoms
2	A	1001	NAG	O5-C5-C6-O6
2	A	1001	NAG	C4-C5-C6-O6

There are no ring outliers.

No monomer is involved in short contacts.

5.7 Other polymers [i](#)

There are no such residues in this entry.

5.8 Polymer linkage issues [i](#)

There are no chain breaks in this entry.

6 Fit of model and data ⓘ

6.1 Protein, DNA and RNA chains ⓘ

In the following table, the column labelled ‘#RSRZ> 2’ contains the number (and percentage) of RSRZ outliers, followed by percent RSRZ outliers for the chain as percentile scores relative to all X-ray entries and entries of similar resolution. The OWAB column contains the minimum, median, 95th percentile and maximum values of the occupancy-weighted average B-factor per residue. The column labelled ‘Q< 0.9’ lists the number of (and percentage) of residues with an average occupancy less than 0.9.

Mol	Chain	Analysed	<RSRZ>	#RSRZ>2	OWAB(Å ²)	Q<0.9
1	A	579/626 (92%)	0.30	55 (9%) 15 16	8, 26, 61, 88	1 (0%)

All (55) RSRZ outliers are listed below:

Mol	Chain	Res	Type	RSRZ
1	A	145	CYS	6.3
1	A	443	ILE	5.6
1	A	345	ILE	5.4
1	A	129	LEU	5.2
1	A	741	LEU	4.4
1	A	484	THR	4.3
1	A	655	GLU	4.2
1	A	128	ALA	4.1
1	A	440	ILE	4.1
1	A	204	LYS	3.9
1	A	480	TYR	3.8
1	A	233	GLU	3.6
1	A	213	ASN	3.6
1	A	212	HIS	3.5
1	A	234	GLU	3.5
1	A	675	LEU	3.5
1	A	337	GLY	3.5
1	A	295	LEU	3.2
1	A	232	HIS	3.2
1	A	172	CYS	3.1
1	A	442	GLU	3.0
1	A	165	ASP	2.9
1	A	231	LYS	2.8
1	A	329	LYS	2.7
1	A	207	TYR	2.7
1	A	206	PRO	2.7
1	A	437	ILE	2.6

Continued on next page...

Continued from previous page...

Mol	Chain	Res	Type	RSRZ
1	A	681	CYS	2.6
1	A	151	ASP	2.6
1	A	598	LYS	2.5
1	A	444	LYS	2.5
1	A	236	ARG	2.5
1	A	595	LEU	2.5
1	A	370	TYR	2.4
1	A	487	ILE	2.4
1	A	146	VAL	2.4
1	A	339	PRO	2.4
1	A	326	GLU	2.4
1	A	338	CYS	2.4
1	A	143	GLU	2.3
1	A	439	HIS	2.3
1	A	485	LYS	2.2
1	A	147	LEU	2.2
1	A	597	GLN	2.2
1	A	699	ASN	2.2
1	A	599	ILE	2.2
1	A	682	GLN	2.2
1	A	132	ILE	2.2
1	A	149	PRO	2.1
1	A	489	SER	2.1
1	A	198	HIS	2.0
1	A	369	HIS	2.0
1	A	700	LYS	2.0
1	A	532	CYS	2.0
1	A	139	ASN	2.0

6.2 Non-standard residues in protein, DNA, RNA chains [i](#)

There are no non-standard protein/DNA/RNA residues in this entry.

6.3 Carbohydrates [i](#)

There are no monosaccharides in this entry.

6.4 Ligands [i](#)

In the following table, the Atoms column lists the number of modelled atoms in the group and the number defined in the chemical component dictionary. The B-factors column lists the minimum,

median, 95th percentile and maximum values of B factors of atoms in the group. The column labelled 'Q< 0.9' lists the number of atoms with occupancy less than 0.9.

Mol	Type	Chain	Res	Atoms	RSCC	RSR	B-factors(\AA^2)	Q<0.9
2	NAG	A	1001	14/15	0.81	0.14	27,36,45,51	0

6.5 Other polymers [i](#)

There are no such residues in this entry.