



# Full wwPDB X-ray Structure Validation Report ⓘ

Apr 28, 2025 – 10:24 AM JST

PDB ID : 8ZCC / pdb\_00008zcc  
Title : Crystal structure of HCoV-NL63 main protease with X77  
Authors : Xu, J.; Li, W.W.; Yin, X.S.; Li, J.  
Deposited on : 2024-04-29  
Resolution : 1.55 Å(reported)

This is a Full wwPDB X-ray Structure Validation Report for a publicly released PDB entry.

We welcome your comments at [validation@mail.wwpdb.org](mailto:validation@mail.wwpdb.org)

A user guide is available at

<https://www.wwpdb.org/validation/2017/XrayValidationReportHelp>

with specific help available everywhere you see the ⓘ symbol.

The types of validation reports are described at

<http://www.wwpdb.org/validation/2017/FAQs#types>.

---

The following versions of software and data (see [references ⓘ](#)) were used in the production of this report:

MolProbity : 4-5-2 with Phenix2.0rc1  
Mogul : 1.8.5 (274361), CSD as541be (2020)  
Xtriage (Phenix) : 2.0rc1  
EDS : 3.0  
buster-report : 1.1.7 (2018)  
Percentile statistics : 20231227.v01 (using entries in the PDB archive December 27th 2023)  
CCP4 : 9.0.006 (Gargrove)  
Density-Fitness : 1.0.12  
Ideal geometry (proteins) : Engh & Huber (2001)  
Ideal geometry (DNA, RNA) : Parkinson et al. (1996)  
Validation Pipeline (wwPDB-VP) : 2.43.1

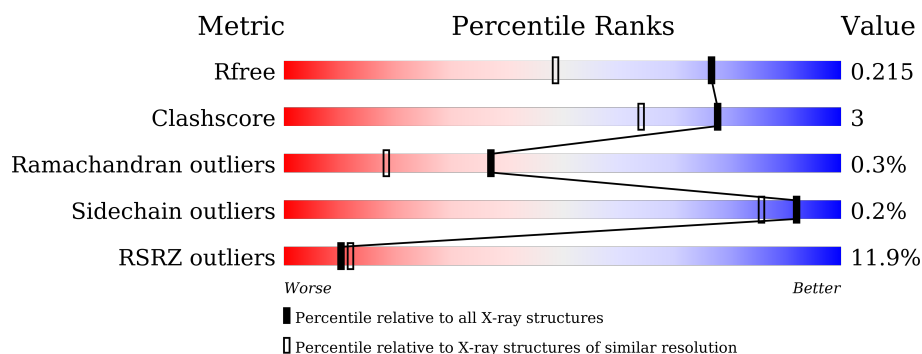
# 1 Overall quality at a glance

The following experimental techniques were used to determine the structure:

*X-RAY DIFFRACTION*

The reported resolution of this entry is 1.55 Å.

Percentile scores (ranging between 0-100) for global validation metrics of the entry are shown in the following graphic. The table shows the number of entries on which the scores are based.



Metric	Whole archive (#Entries)	Similar resolution (#Entries, resolution range(Å))
$R_{free}$	164625	1935 (1.56-1.56)
Clashscore	180529	2073 (1.56-1.56)
Ramachandran outliers	177936	2037 (1.56-1.56)
Sidechain outliers	177891	2034 (1.56-1.56)
RSRZ outliers	164620	1935 (1.56-1.56)

The table below summarises the geometric issues observed across the polymeric chains and their fit to the electron density. The red, orange, yellow and green segments of the lower bar indicate the fraction of residues that contain outliers for  $\geq 3$ , 2, 1 and 0 types of geometric quality criteria respectively. A grey segment represents the fraction of residues that are not modelled. The numeric value for each fraction is indicated below the corresponding segment, with a dot representing fractions  $\leq 5\%$ . The upper red bar (where present) indicates the fraction of residues that have poor fit to the electron density. The numeric value is given above the bar.

Mol	Chain	Length	Quality of chain
1	A	299	<div> <div>7%</div> <div>93%</div> <div>6%</div> </div>
1	B	299	<div> <div>16%</div> <div>93%</div> <div>7%</div> </div>

## 2 Entry composition [i](#)

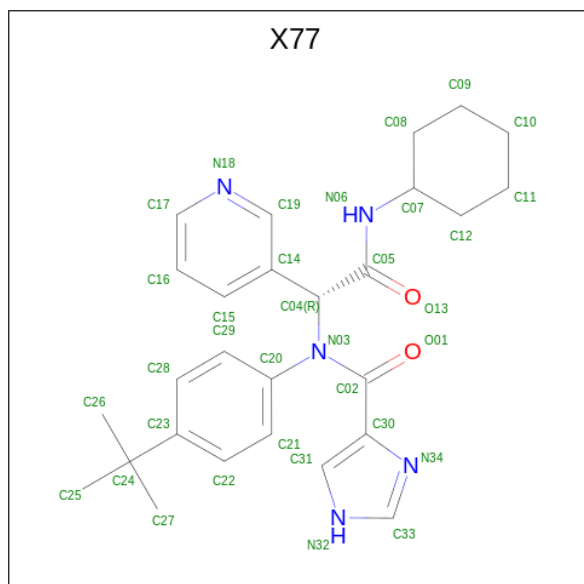
There are 3 unique types of molecules in this entry. The entry contains 4899 atoms, of which 0 are hydrogens and 0 are deuteriums.

In the tables below, the ZeroOcc column contains the number of atoms modelled with zero occupancy, the AltConf column contains the number of residues with at least one atom in alternate conformation and the Trace column contains the number of residues modelled with at most 2 atoms.

- Molecule 1 is a protein called HCoV-NL63 main protease.

Mol	Chain	Residues	Atoms					ZeroOcc	AltConf	Trace
1	A	298	Total	C	N	O	S	0	0	0
			2228	1411	381	419	17			
1	B	299	Total	C	N	O	S	0	0	0
			2228	1412	380	419	17			

- Molecule 2 is N-(4-tert-butylphenyl)-N-[(1R)-2-(cyclohexylamino)-2-oxo-1-(pyridin-3-yl)ethyl]-1H-imidazole-4-carboxamide (CCD ID: X77) (formula: C<sub>27</sub>H<sub>33</sub>N<sub>5</sub>O<sub>2</sub>) (labeled as "Ligand of Interest" by depositor).



Mol	Chain	Residues	Atoms				ZeroOcc	AltConf
2	A	1	Total	C	N	O	0	0
			34	27	5	2		
2	B	1	Total	C	N	O	0	0
			34	27	5	2		

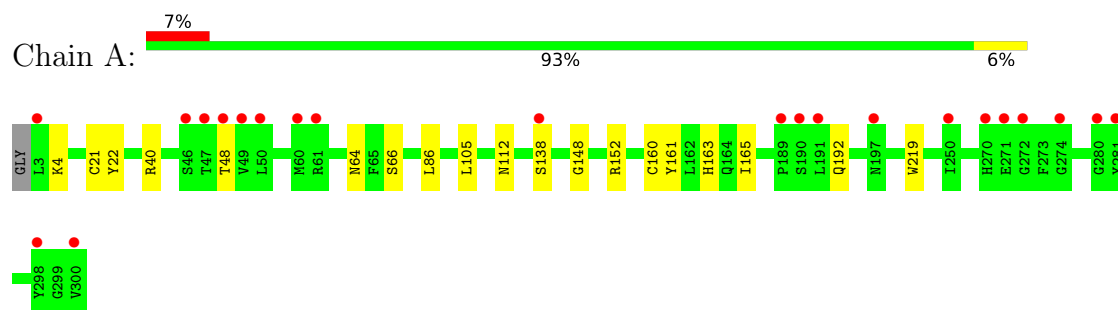
- Molecule 3 is water.

Mol	Chain	Residues	Atoms		ZeroOcc	AltConf
3	A	216	Total 216	O 216	0	0
3	B	159	Total 159	O 159	0	0

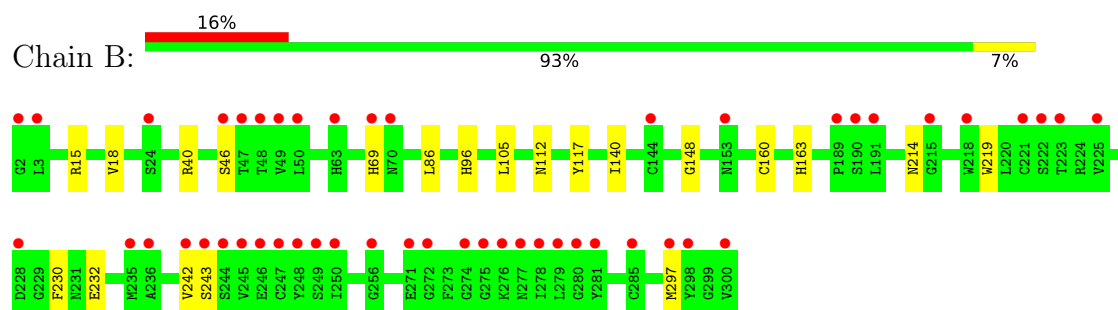
### 3 Residue-property plots

These plots are drawn for all protein, RNA, DNA and oligosaccharide chains in the entry. The first graphic for a chain summarises the proportions of the various outlier classes displayed in the second graphic. The second graphic shows the sequence view annotated by issues in geometry and electron density. Residues are color-coded according to the number of geometric quality criteria for which they contain at least one outlier: green = 0, yellow = 1, orange = 2 and red = 3 or more. A red dot above a residue indicates a poor fit to the electron density ( $RSRZ > 2$ ). Stretches of 2 or more consecutive residues without any outlier are shown as a green connector. Residues present in the sample, but not in the model, are shown in grey.

- Molecule 1: HCoV-NL63 main protease



- Molecule 1: HCoV-NL63 main protease



## 4 Data and refinement statistics

Property	Value	Source
Space group	P 1 21 1	Depositor
Cell constants a, b, c, $\alpha$ , $\beta$ , $\gamma$	62.85Å 82.23Å 64.14Å 90.00° 108.42° 90.00°	Depositor
Resolution (Å)	37.13 – 1.55 37.13 – 1.55	Depositor EDS
% Data completeness (in resolution range)	98.3 (37.13-1.55) 98.4 (37.13-1.55)	Depositor EDS
$R_{merge}$	0.12	Depositor
$R_{sym}$	(Not available)	Depositor
$\langle I/\sigma(I) \rangle$ <sup>1</sup>	1.67 (at 1.55Å)	Xtriage
Refinement program	PHENIX 1.12_2829	Depositor
R, $R_{free}$	0.193 , 0.214 0.193 , 0.215	Depositor DCC
$R_{free}$ test set	4339 reflections (4.82%)	wwPDB-VP
Wilson B-factor (Å <sup>2</sup> )	17.4	Xtriage
Anisotropy	0.529	Xtriage
Bulk solvent $k_{sol}$ (e/Å <sup>3</sup> ), $B_{sol}$ (Å <sup>2</sup> )	0.37 , 35.7	EDS
L-test for twinning <sup>2</sup>	$\langle  L  \rangle = 0.50$ , $\langle L^2 \rangle = 0.33$	Xtriage
Estimated twinning fraction	0.021 for l,-k,h	Xtriage
$F_o, F_c$ correlation	0.96	EDS
Total number of atoms	4899	wwPDB-VP
Average B, all atoms (Å <sup>2</sup> )	23.0	wwPDB-VP

Xtriage's analysis on translational NCS is as follows: *The largest off-origin peak in the Patterson function is 4.90% of the height of the origin peak. No significant pseudotranslation is detected.*

<sup>1</sup>Intensities estimated from amplitudes.

<sup>2</sup>Theoretical values of  $\langle |L| \rangle$ ,  $\langle L^2 \rangle$  for acentric reflections are 0.5, 0.333 respectively for untwinned datasets, and 0.375, 0.2 for perfectly twinned datasets.

## 5 Model quality

### 5.1 Standard geometry

Bond lengths and bond angles in the following residue types are not validated in this section: X77

The Z score for a bond length (or angle) is the number of standard deviations the observed value is removed from the expected value. A bond length (or angle) with  $|Z| > 5$  is considered an outlier worth inspection. RMSZ is the root-mean-square of all Z scores of the bond lengths (or angles).

Mol	Chain	Bond lengths		Bond angles	
		RMSZ	$\# Z  > 5$	RMSZ	$\# Z  > 5$
1	A	0.28	0/2279	0.50	0/3103
1	B	0.27	0/2279	0.49	0/3103
All	All	0.27	0/4558	0.49	0/6206

There are no bond length outliers.

There are no bond angle outliers.

There are no chirality outliers.

There are no planarity outliers.

### 5.2 Too-close contacts

In the following table, the Non-H and H(model) columns list the number of non-hydrogen atoms and hydrogen atoms in the chain respectively. The H(added) column lists the number of hydrogen atoms added and optimized by MolProbity. The Clashes column lists the number of clashes within the asymmetric unit, whereas Symm-Clashes lists symmetry-related clashes.

Mol	Chain	Non-H	H(model)	H(added)	Clashes	Symm-Clashes
1	A	2228	0	2133	12	0
1	B	2228	0	2131	12	0
2	A	34	0	0	2	0
2	B	34	0	0	1	0
3	A	216	0	0	3	0
3	B	159	0	0	1	0
All	All	4899	0	4264	24	0

The all-atom clashscore is defined as the number of clashes found per 1000 atoms (including hydrogen atoms). The all-atom clashscore for this structure is 3.

All (24) close contacts within the same asymmetric unit are listed below, sorted by their clash

magnitude.

Atom-1	Atom-2	Interatomic distance (Å)	Clash overlap (Å)
1:A:138:SER:N	3:A:501:HOH:O	2.27	0.67
1:B:214:ASN:OD1	1:B:297:MET:HE1	2.02	0.60
1:A:152:ARG:NH1	3:A:503:HOH:O	2.39	0.56
1:A:4:LYS:NZ	3:A:505:HOH:O	2.41	0.53
1:B:232:GLU:OE1	3:B:501:HOH:O	2.18	0.51
1:B:46:SER:O	1:B:46:SER:OG	2.28	0.50
1:B:18:VAL:HG12	1:B:69:HIS:HB2	1.94	0.50
1:B:117:TYR:CE1	1:B:140:ILE:HG12	2.50	0.47
1:B:112:ASN:O	1:B:148:GLY:HA2	2.14	0.47
1:B:15:ARG:HH21	1:B:96:HIS:CE1	2.33	0.46
1:B:163:HIS:NE2	2:B:401:X77:C16	2.80	0.45
1:A:112:ASN:O	1:A:148:GLY:HA2	2.18	0.43
1:A:105:LEU:HG	1:A:160:CYS:HB2	2.00	0.43
1:A:40:ARG:HA	1:A:86:LEU:HG	2.00	0.43
1:B:105:LEU:HG	1:B:160:CYS:HB2	2.01	0.43
1:B:219:TRP:CD1	1:B:219:TRP:H	2.37	0.43
1:A:219:TRP:CD1	1:A:219:TRP:H	2.38	0.42
1:B:230:PHE:CE2	1:B:242:VAL:HG23	2.54	0.41
1:A:22:TYR:CE1	1:A:64:ASN:HB2	2.55	0.41
1:B:40:ARG:HA	1:B:86:LEU:HG	2.02	0.41
1:A:163:HIS:NE2	2:A:401:X77:N18	2.69	0.41
1:A:21:CYS:HB3	1:A:66:SER:OG	2.21	0.40
1:A:148:GLY:HA3	1:A:161:TYR:HB3	2.04	0.40
1:A:165:ILE:HG22	2:A:401:X77:C28	2.52	0.40

There are no symmetry-related clashes.

## 5.3 Torsion angles [i](#)

### 5.3.1 Protein backbone [i](#)

In the following table, the Percentiles column shows the percent Ramachandran outliers of the chain as a percentile score with respect to all X-ray entries followed by that with respect to entries of similar resolution.

The Analysed column shows the number of residues for which the backbone conformation was analysed, and the total number of residues.

Mol	Chain	Analysed	Favoured	Allowed	Outliers	Percentiles
1	A	296/299 (99%)	287 (97%)	8 (3%)	1 (0%)	37 18

*Continued on next page...*



*Continued from previous page...*

Mol	Chain	Analysed	Favoured	Allowed	Outliers	Percentiles	
1	B	297/299 (99%)	292 (98%)	4 (1%)	1 (0%)	37	18
All	All	593/598 (99%)	579 (98%)	12 (2%)	2 (0%)	37	18

All (2) Ramachandran outliers are listed below:

Mol	Chain	Res	Type
1	B	243	SER
1	A	192	GLN

### 5.3.2 Protein sidechains [i](#)

In the following table, the Percentiles column shows the percent sidechain outliers of the chain as a percentile score with respect to all X-ray entries followed by that with respect to entries of similar resolution.

The Analysed column shows the number of residues for which the sidechain conformation was analysed, and the total number of residues.

Mol	Chain	Analysed	Rotameric	Outliers	Percentiles	
1	A	241/250 (96%)	240 (100%)	1 (0%)	89	82
1	B	240/250 (96%)	240 (100%)	0	100	100
All	All	481/500 (96%)	480 (100%)	1 (0%)	92	86

All (1) residues with a non-rotameric sidechain are listed below:

Mol	Chain	Res	Type
1	A	48	THR

Sometimes sidechains can be flipped to improve hydrogen bonding and reduce clashes. All (4) such sidechains are listed below:

Mol	Chain	Res	Type
1	A	55	HIS
1	A	63	HIS
1	B	96	HIS
1	B	203	ASN

### 5.3.3 RNA [i](#)

There are no RNA molecules in this entry.

## 5.4 Non-standard residues in protein, DNA, RNA chains [i](#)

There are no non-standard protein/DNA/RNA residues in this entry.

## 5.5 Carbohydrates [i](#)

There are no oligosaccharides in this entry.

## 5.6 Ligand geometry [i](#)

2 ligands are modelled in this entry.

In the following table, the Counts columns list the number of bonds (or angles) for which Mogul statistics could be retrieved, the number of bonds (or angles) that are observed in the model and the number of bonds (or angles) that are defined in the Chemical Component Dictionary. The Link column lists molecule types, if any, to which the group is linked. The Z score for a bond length (or angle) is the number of standard deviations the observed value is removed from the expected value. A bond length (or angle) with  $|Z| > 2$  is considered an outlier worth inspection. RMSZ is the root-mean-square of all Z scores of the bond lengths (or angles).

Mol	Type	Chain	Res	Link	Bond lengths			Bond angles		
					Counts	RMSZ	$\# Z  > 2$	Counts	RMSZ	$\# Z  > 2$
2	X77	B	401	-	35,37,37	4.41	17 (48%)	46,52,52	2.21	17 (36%)
2	X77	A	401	-	35,37,37	4.50	18 (51%)	46,52,52	2.07	11 (23%)

In the following table, the Chirals column lists the number of chiral outliers, the number of chiral centers analysed, the number of these observed in the model and the number defined in the Chemical Component Dictionary. Similar counts are reported in the Torsion and Rings columns. '-' means no outliers of that kind were identified.

Mol	Type	Chain	Res	Link	Chirals	Torsions	Rings
2	X77	B	401	-	-	10/30/42/42	0/4/4/4
2	X77	A	401	-	-	10/30/42/42	0/4/4/4

All (35) bond length outliers are listed below:

Mol	Chain	Res	Type	Atoms	Z	Observed(Å)	Ideal(Å)
2	A	401	X77	C28-C23	9.03	1.53	1.39
2	B	401	X77	C19-C14	8.95	1.52	1.39
2	B	401	X77	C28-C23	8.61	1.53	1.39
2	A	401	X77	C19-C14	8.22	1.51	1.39
2	B	401	X77	C22-C23	8.19	1.52	1.39
2	A	401	X77	C22-C23	8.10	1.52	1.39

*Continued on next page...*

*Continued from previous page...*

Mol	Chain	Res	Type	Atoms	Z	Observed(Å)	Ideal(Å)
2	A	401	X77	C29-C28	8.10	1.53	1.38
2	B	401	X77	C22-C21	8.00	1.53	1.38
2	A	401	X77	C22-C21	7.95	1.53	1.38
2	A	401	X77	C21-C20	7.42	1.54	1.39
2	B	401	X77	C21-C20	7.21	1.53	1.39
2	B	401	X77	C29-C28	7.18	1.51	1.38
2	B	401	X77	C02-N03	7.09	1.47	1.37
2	A	401	X77	C02-N03	7.06	1.47	1.37
2	B	401	X77	C19-N18	6.55	1.48	1.34
2	A	401	X77	C29-C20	6.49	1.52	1.39
2	B	401	X77	C29-C20	6.46	1.52	1.39
2	A	401	X77	C19-N18	6.28	1.47	1.34
2	A	401	X77	C15-C14	6.08	1.48	1.39
2	A	401	X77	C05-N06	5.79	1.46	1.34
2	B	401	X77	C05-N06	5.46	1.46	1.34
2	B	401	X77	C15-C14	5.20	1.47	1.39
2	A	401	X77	C17-N18	4.97	1.48	1.33
2	A	401	X77	C16-C17	4.95	1.52	1.37
2	B	401	X77	C17-N18	4.81	1.47	1.33
2	B	401	X77	C16-C17	4.80	1.51	1.37
2	A	401	X77	C16-C15	4.77	1.49	1.38
2	B	401	X77	C16-C15	4.51	1.48	1.38
2	A	401	X77	O01-C02	-2.79	1.17	1.22
2	B	401	X77	C30-C02	2.55	1.55	1.50
2	B	401	X77	O01-C02	-2.34	1.17	1.22
2	A	401	X77	O13-C05	-2.16	1.19	1.23
2	B	401	X77	O13-C05	-2.12	1.19	1.23
2	A	401	X77	C20-N03	2.10	1.46	1.43
2	A	401	X77	C04-C05	-2.03	1.52	1.54

All (28) bond angle outliers are listed below:

Mol	Chain	Res	Type	Atoms	Z	Observed(°)	Ideal(°)
2	B	401	X77	C15-C14-C19	6.15	123.41	116.88
2	A	401	X77	C15-C14-C19	6.03	123.29	116.88
2	B	401	X77	C29-C20-N03	-5.62	113.94	120.13
2	A	401	X77	C21-C20-N03	-5.01	114.61	120.13
2	A	401	X77	C14-C19-N18	-4.66	116.83	124.14
2	A	401	X77	C07-N06-C05	4.26	129.99	123.20
2	B	401	X77	O01-C02-N03	-4.15	116.20	121.48
2	B	401	X77	C07-N06-C05	4.11	129.75	123.20
2	B	401	X77	C16-C15-C14	-3.81	115.94	120.65

*Continued on next page...*

*Continued from previous page...*

Mol	Chain	Res	Type	Atoms	Z	Observed(°)	Ideal(°)
2	A	401	X77	C05-C04-N03	-3.69	106.57	110.46
2	A	401	X77	C29-C20-N03	3.56	124.06	120.13
2	B	401	X77	C21-C20-N03	3.46	123.94	120.13
2	B	401	X77	C28-C23-C22	3.20	122.73	117.97
2	B	401	X77	C14-C19-N18	-3.03	119.38	124.14
2	B	401	X77	C21-C22-C23	-2.71	117.60	121.22
2	A	401	X77	O01-C02-N03	-2.70	118.04	121.48
2	A	401	X77	C17-N18-C19	2.63	121.40	116.85
2	B	401	X77	C04-C05-N06	-2.57	111.62	114.68
2	B	401	X77	C12-C07-C08	2.53	115.21	110.82
2	A	401	X77	C28-C23-C22	2.43	121.59	117.97
2	B	401	X77	C20-N03-C02	-2.24	119.40	121.92
2	B	401	X77	C05-C04-N03	-2.20	108.14	110.46
2	A	401	X77	C12-C07-C08	2.15	114.54	110.82
2	B	401	X77	C15-C16-C17	2.12	122.04	118.91
2	B	401	X77	C19-C14-C04	-2.09	116.93	121.24
2	B	401	X77	C14-C04-C05	-2.09	107.96	112.06
2	A	401	X77	C30-C02-N03	2.07	122.48	118.28
2	B	401	X77	C30-C02-N03	2.07	122.47	118.28

There are no chirality outliers.

All (20) torsion outliers are listed below:

Mol	Chain	Res	Type	Atoms
2	A	401	X77	C14-C04-N03-C20
2	A	401	X77	C08-C07-N06-C05
2	B	401	X77	C05-C04-N03-C20
2	B	401	X77	C14-C04-N03-C20
2	B	401	X77	C08-C07-N06-C05
2	A	401	X77	C05-C04-N03-C02
2	B	401	X77	C05-C04-N03-C02
2	B	401	X77	C05-C04-C14-C19
2	A	401	X77	C14-C04-C05-N06
2	A	401	X77	N03-C04-C05-N06
2	A	401	X77	N03-C04-C05-O13
2	B	401	X77	C14-C04-C05-N06
2	B	401	X77	C14-C04-C05-O13
2	B	401	X77	N03-C04-C05-N06
2	B	401	X77	N03-C04-C05-O13
2	A	401	X77	C05-C04-N03-C20
2	A	401	X77	C05-C04-C14-C15
2	B	401	X77	C05-C04-C14-C15

*Continued on next page...*

*Continued from previous page...*

Mol	Chain	Res	Type	Atoms
2	A	401	X77	C05-C04-C14-C19
2	A	401	X77	C14-C04-C05-O13

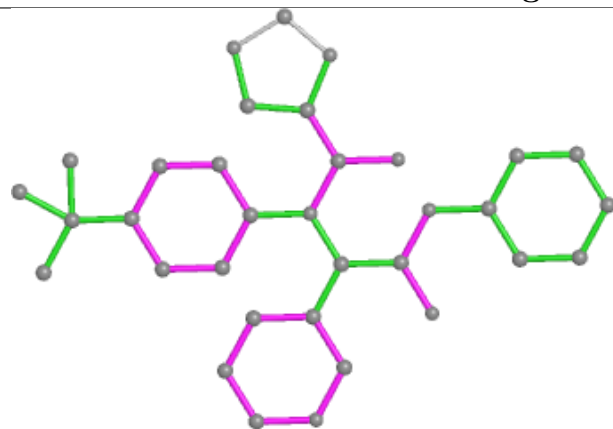
There are no ring outliers.

2 monomers are involved in 3 short contacts:

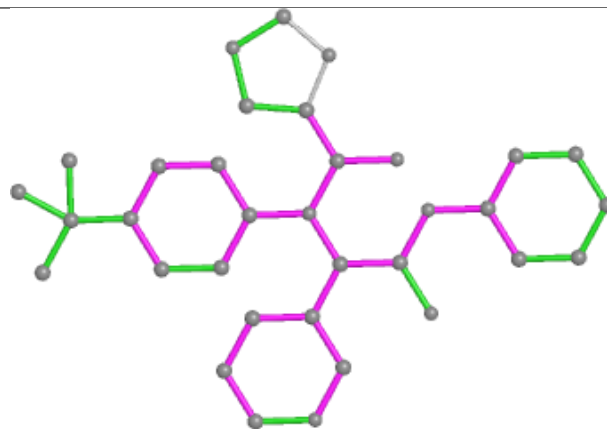
Mol	Chain	Res	Type	Clashes	Symm-Clashes
2	B	401	X77	1	0
2	A	401	X77	2	0

The following is a two-dimensional graphical depiction of Mogul quality analysis of bond lengths, bond angles, torsion angles, and ring geometry for all instances of the Ligand of Interest. In addition, ligands with molecular weight > 250 and outliers as shown on the validation Tables will also be included. For torsion angles, if less than 5% of the Mogul distribution of torsion angles is within 10 degrees of the torsion angle in question, then that torsion angle is considered an outlier. Any bond that is central to one or more torsion angles identified as an outlier by Mogul will be highlighted in the graph. For rings, the root-mean-square deviation (RMSD) between the ring in question and similar rings identified by Mogul is calculated over all ring torsion angles. If the average RMSD is greater than 60 degrees and the minimal RMSD between the ring in question and any Mogul-identified rings is also greater than 60 degrees, then that ring is considered an outlier. The outliers are highlighted in purple. The color gray indicates Mogul did not find sufficient equivalents in the CSD to analyse the geometry.

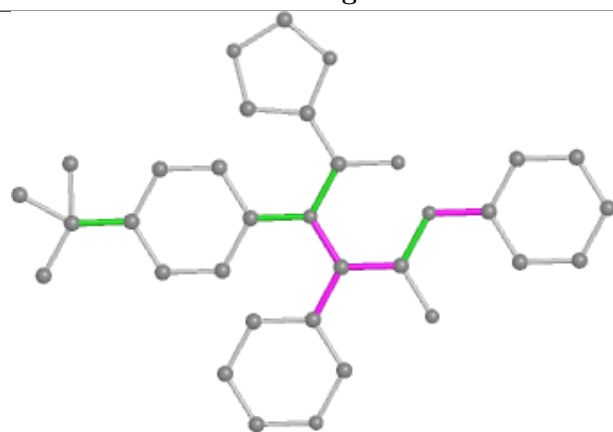
## Ligand X77 B 401



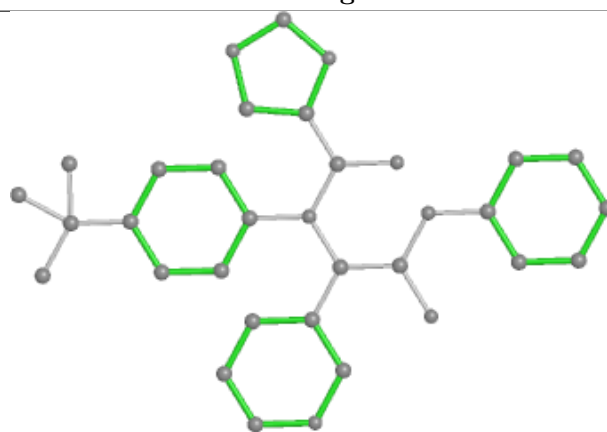
Bond lengths



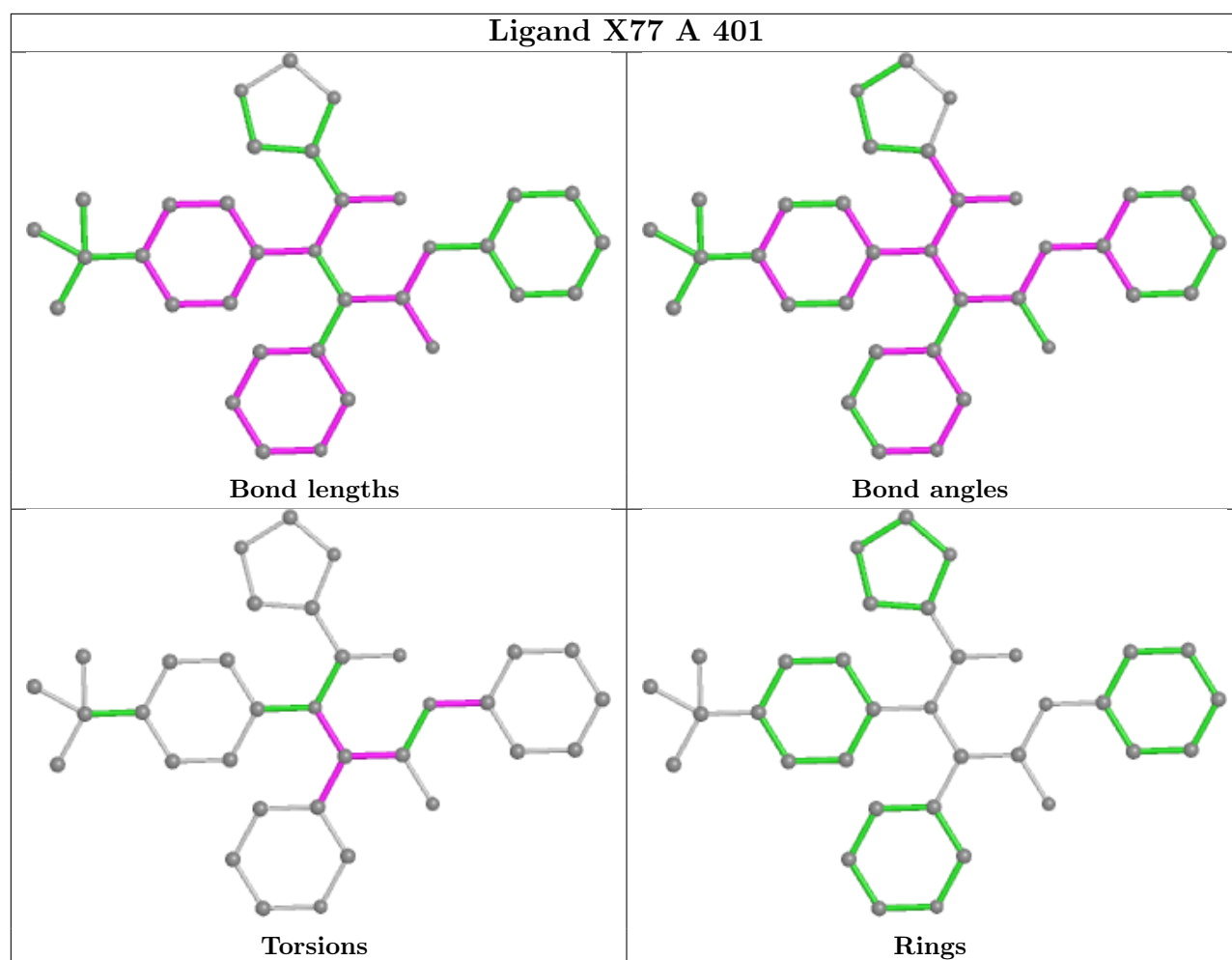
Bond angles



Torsions



Rings



## 5.7 Other polymers [i](#)

There are no such residues in this entry.

## 5.8 Polymer linkage issues [i](#)

There are no chain breaks in this entry.

## 6 Fit of model and data

### 6.1 Protein, DNA and RNA chains

In the following table, the column labelled ‘#RSRZ> 2’ contains the number (and percentage) of RSRZ outliers, followed by percent RSRZ outliers for the chain as percentile scores relative to all X-ray entries and entries of similar resolution. The OWAB column contains the minimum, median, 95<sup>th</sup> percentile and maximum values of the occupancy-weighted average B-factor per residue. The column labelled ‘Q< 0.9’ lists the number of (and percentage) of residues with an average occupancy less than 0.9.

Mol	Chain	Analysed	<RSRZ>	#RSRZ>2	OWAB(Å <sup>2</sup> )	Q<0.9
1	A	298/299 (99%)	0.47	22 (7%) 22 26	12, 20, 35, 48	0
1	B	299/299 (100%)	0.79	49 (16%) 5 6	12, 23, 43, 52	0
All	All	597/598 (99%)	0.63	71 (11%) 10 12	12, 21, 41, 52	0

All (71) RSRZ outliers are listed below:

Mol	Chain	Res	Type	RSRZ
1	A	48	THR	6.4
1	A	46	SER	5.2
1	B	300	VAL	5.0
1	A	47	THR	5.0
1	B	50	LEU	4.9
1	B	49	VAL	4.9
1	A	300	VAL	4.7
1	A	49	VAL	4.1
1	B	243	SER	4.1
1	A	250	ILE	4.1
1	B	2	GLY	4.1
1	B	46	SER	4.0
1	A	191	LEU	4.0
1	B	191	LEU	3.9
1	B	278	ILE	3.8
1	B	48	THR	3.7
1	B	47	THR	3.6
1	B	280	GLY	3.4
1	B	245	VAL	3.2
1	B	235	MET	3.1
1	B	247	CYS	3.0
1	B	222	SER	3.0
1	B	248	TYR	3.0
1	A	270	HIS	2.9

*Continued on next page...*



*Continued from previous page...*

Mol	Chain	Res	Type	RSRZ
1	A	280	GLY	2.9
1	A	271	GLU	2.9
1	B	189	PRO	2.9
1	B	281	TYR	2.8
1	B	298	TYR	2.8
1	A	274	GLY	2.8
1	B	223	THR	2.8
1	B	279	LEU	2.8
1	B	221	CYS	2.8
1	A	3	LEU	2.8
1	B	256	GLY	2.7
1	B	274	GLY	2.7
1	B	271	GLU	2.7
1	B	70	ASN	2.7
1	A	298	TYR	2.7
1	A	189	PRO	2.6
1	B	144	CYS	2.6
1	B	153	ASN	2.6
1	B	242	VAL	2.6
1	B	228	ASP	2.6
1	B	272	GLY	2.5
1	B	277	ASN	2.5
1	B	244	SER	2.5
1	B	218	TRP	2.5
1	B	63	HIS	2.4
1	B	24	SER	2.4
1	A	190	SER	2.4
1	B	249	SER	2.4
1	B	69	HIS	2.4
1	B	275	GLY	2.3
1	A	61	ARG	2.3
1	A	60	MET	2.3
1	B	250	ILE	2.3
1	B	246	GLU	2.2
1	A	272	GLY	2.2
1	B	3	LEU	2.2
1	B	285	CYS	2.2
1	A	197	ASN	2.2
1	B	225	VAL	2.2
1	B	190	SER	2.2
1	B	276	LYS	2.2
1	B	297	MET	2.1

*Continued on next page...*

*Continued from previous page...*

Mol	Chain	Res	Type	RSRZ
1	A	138	SER	2.1
1	A	50	LEU	2.1
1	A	281	TYR	2.1
1	B	215	GLY	2.1
1	B	236	ALA	2.0

## 6.2 Non-standard residues in protein, DNA, RNA chains [i](#)

There are no non-standard protein/DNA/RNA residues in this entry.

## 6.3 Carbohydrates [i](#)

There are no monosaccharides in this entry.

## 6.4 Ligands [i](#)

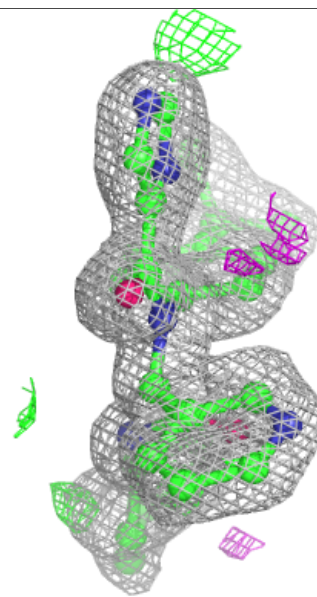
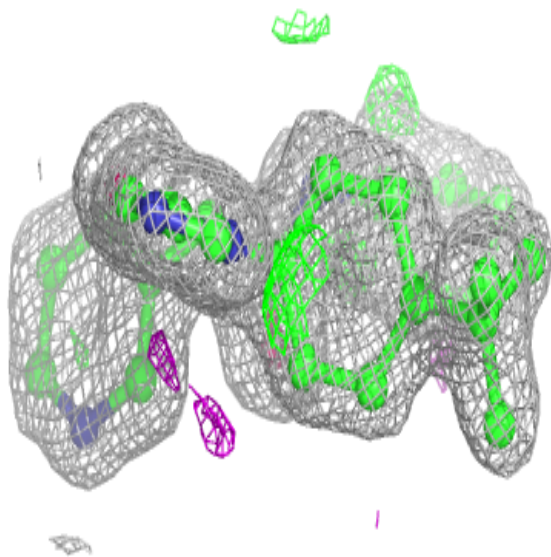
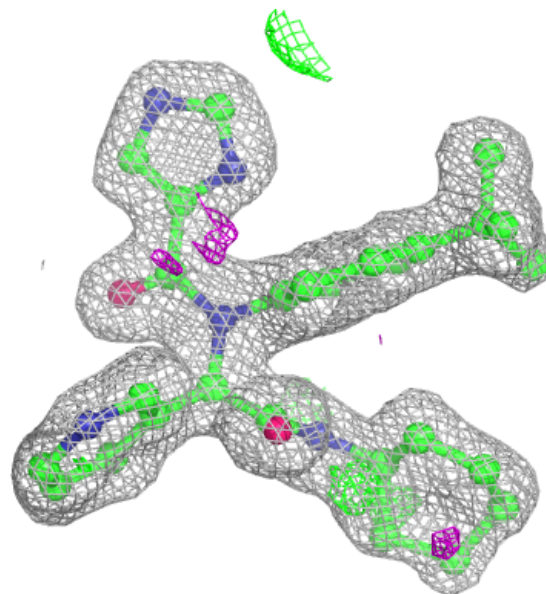
In the following table, the Atoms column lists the number of modelled atoms in the group and the number defined in the chemical component dictionary. The B-factors column lists the minimum, median, 95<sup>th</sup> percentile and maximum values of B factors of atoms in the group. The column labelled 'Q< 0.9' lists the number of atoms with occupancy less than 0.9.

Mol	Type	Chain	Res	Atoms	RSCC	RSR	B-factors( $\text{\AA}^2$ )	Q<0.9
2	X77	A	401	34/34	0.94	0.09	18,23,31,33	0
2	X77	B	401	34/34	0.94	0.09	13,19,28,31	0

The following is a graphical depiction of the model fit to experimental electron density of all instances of the Ligand of Interest. In addition, ligands with molecular weight > 250 and outliers as shown on the geometry validation Tables will also be included. Each fit is shown from different orientation to approximate a three-dimensional view.

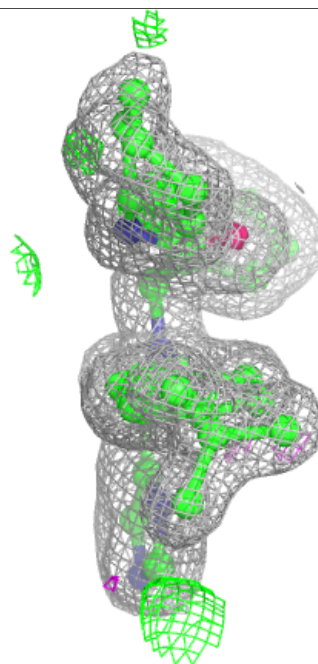
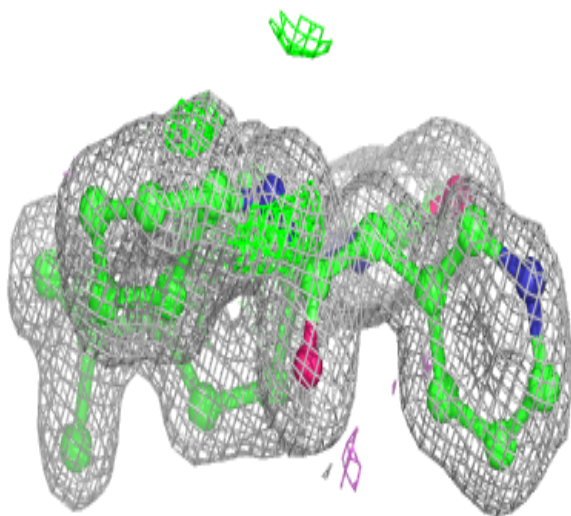
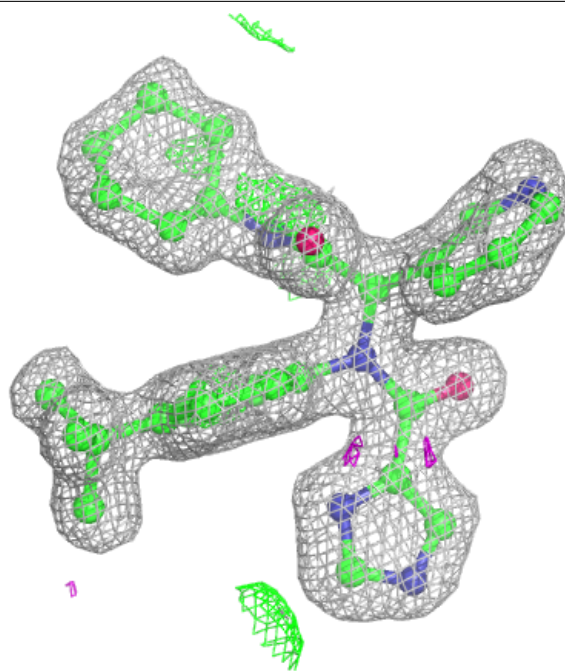
**Electron density around X77 A 401:**

$2mF_o-DF_c$  (at 0.7 rmsd) in gray  
 $mF_o-DF_c$  (at 3 rmsd) in purple (negative)  
and green (positive)



**Electron density around X77 B 401:**

$2mF_o-DF_c$  (at 0.7 rmsd) in gray  
 $mF_o-DF_c$  (at 3 rmsd) in purple (negative)  
and green (positive)



## 6.5 Other polymers ⓘ

There are no such residues in this entry.