



# Full wwPDB X-ray Structure Validation Report ⓘ

Apr 7, 2025 – 10:21 AM JST

PDB ID : 8ZBH / pdb\_00008zbh  
Title : Crystal structure of TEAD3 YAP binding domain with compound 3  
Authors : Yoo, Y.; Kim, H.  
Deposited on : 2024-04-26  
Resolution : 2.60 Å(reported)

This is a Full wwPDB X-ray Structure Validation Report for a publicly released PDB entry.

We welcome your comments at [validation@mail.wwpdb.org](mailto:validation@mail.wwpdb.org)

A user guide is available at

<https://www.wwpdb.org/validation/2017/XrayValidationReportHelp>

with specific help available everywhere you see the ⓘ symbol.

The types of validation reports are described at

<http://www.wwpdb.org/validation/2017/FAQs#types>.

---

The following versions of software and data (see [references ⓘ](#)) were used in the production of this report:

MolProbity : 4.02b-467  
Mogul : 1.8.5 (274361), CSD as541be (2020)  
Xtriage (Phenix) : 2.0rc1  
EDS : 3.0  
buster-report : 1.1.7 (2018)  
Percentile statistics : 20231227.v01 (using entries in the PDB archive December 27th 2023)  
CCP4 : 9.0.006 (Gargrove)  
Density-Fitness : 1.0.12  
Ideal geometry (proteins) : Engh & Huber (2001)  
Ideal geometry (DNA, RNA) : Parkinson et al. (1996)  
Validation Pipeline (wwPDB-VP) : 2.42

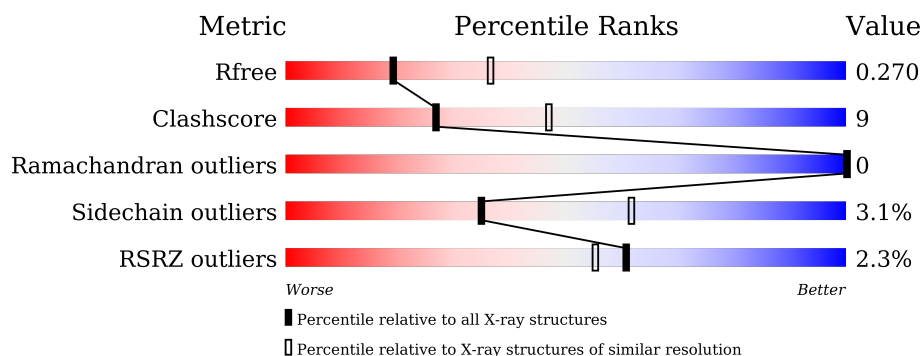
# 1 Overall quality at a glance

The following experimental techniques were used to determine the structure:

*X-RAY DIFFRACTION*

The reported resolution of this entry is 2.60 Å.

Percentile scores (ranging between 0-100) for global validation metrics of the entry are shown in the following graphic. The table shows the number of entries on which the scores are based.



Metric	Whole archive (#Entries)	Similar resolution (#Entries, resolution range(Å))
$R_{free}$	164625	3775 (2.60-2.60)
Clashscore	180529	4181 (2.60-2.60)
Ramachandran outliers	177936	4129 (2.60-2.60)
Sidechain outliers	177891	4129 (2.60-2.60)
RSRZ outliers	164620	3775 (2.60-2.60)

The table below summarises the geometric issues observed across the polymeric chains and their fit to the electron density. The red, orange, yellow and green segments of the lower bar indicate the fraction of residues that contain outliers for  $\geq 3$ , 2, 1 and 0 types of geometric quality criteria respectively. A grey segment represents the fraction of residues that are not modelled. The numeric value for each fraction is indicated below the corresponding segment, with a dot representing fractions  $\leq 5\%$ . The upper red bar (where present) indicates the fraction of residues that have poor fit to the electron density. The numeric value is given above the bar.

Mol	Chain	Length	Quality of chain
1	A	221	<div> <div>2%</div> <div> <div></div> <div>74%</div> <div>24%</div> <div>..</div> </div> </div>
1	B	221	<div> <div>3%</div> <div> <div></div> <div>81%</div> <div>17%</div> <div>.</div> </div> </div>
1	C	221	<div> <div>2%</div> <div> <div></div> <div>72%</div> <div>22%</div> <div>..</div> </div> </div>

## 2 Entry composition [i](#)

There are 3 unique types of molecules in this entry. The entry contains 5379 atoms, of which 0 are hydrogens and 0 are deuteriums.

In the tables below, the ZeroOcc column contains the number of atoms modelled with zero occupancy, the AltConf column contains the number of residues with at least one atom in alternate conformation and the Trace column contains the number of residues modelled with at most 2 atoms.

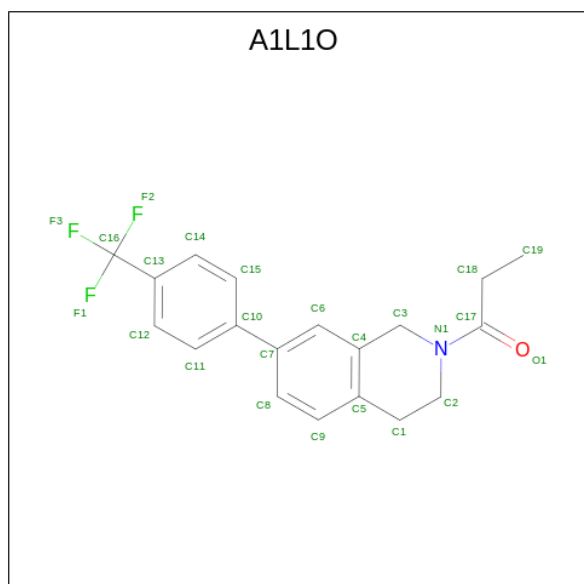
- Molecule 1 is a protein called Transcriptional enhancer factor TEF-5.

Mol	Chain	Residues	Atoms					ZeroOcc	AltConf	Trace
1	A	217	Total	C	N	O	S	0	0	0
			1755	1127	294	326	8			
1	B	221	Total	C	N	O	S	0	0	0
			1788	1145	300	335	8			
1	C	213	Total	C	N	O	S	0	0	0
			1725	1108	288	321	8			

There are 3 discrepancies between the modelled and reference sequences:

Chain	Residue	Modelled	Actual	Comment	Reference
A	215	SER	-	expression tag	UNP Q99594
B	215	SER	-	expression tag	UNP Q99594
C	215	SER	-	expression tag	UNP Q99594

- Molecule 2 is 1-[7-[4-(trifluoromethyl)phenyl]-3,4-dihydro-1 {H}-isoquinolin-2-yl]propan-1-one (CCD ID: A1L1O) (formula: C<sub>19</sub>H<sub>18</sub>F<sub>3</sub>NO) (labeled as "Ligand of Interest" by depositor).



Mol	Chain	Residues	Atoms					ZeroOcc	AltConf
2	A	1	Total	C	F	N	O	0	0
			24	19	3	1	1		
2	B	1	Total	C	F	N	O	0	0
			24	19	3	1	1		
2	C	1	Total	C	F	N	O	0	0
			24	19	3	1	1		

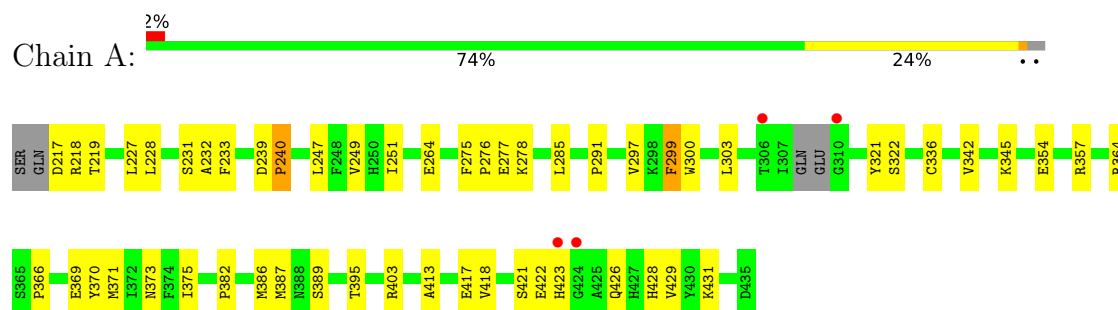
- Molecule 3 is water.

Mol	Chain	Residues	Atoms		ZeroOcc	AltConf
3	A	15	Total	O	0	0
			15	15		
3	B	11	Total	O	0	0
			11	11		
3	C	13	Total	O	0	0
			13	13		

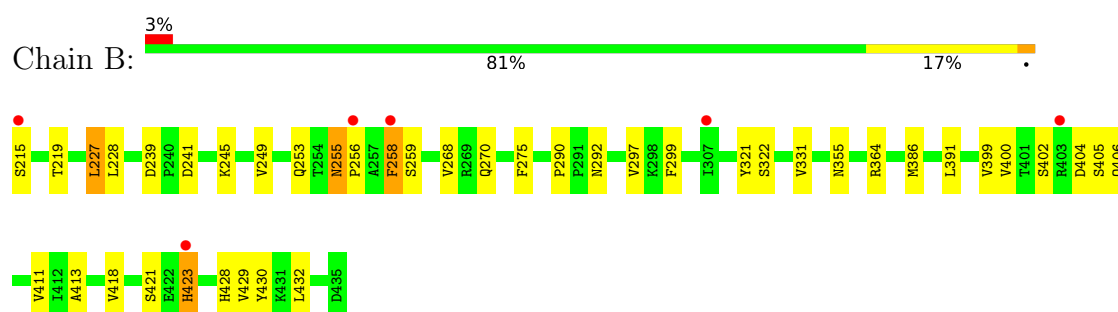
### 3 Residue-property plots [i](#)

These plots are drawn for all protein, RNA, DNA and oligosaccharide chains in the entry. The first graphic for a chain summarises the proportions of the various outlier classes displayed in the second graphic. The second graphic shows the sequence view annotated by issues in geometry and electron density. Residues are color-coded according to the number of geometric quality criteria for which they contain at least one outlier: green = 0, yellow = 1, orange = 2 and red = 3 or more. A red dot above a residue indicates a poor fit to the electron density ( $RSRZ > 2$ ). Stretches of 2 or more consecutive residues without any outlier are shown as a green connector. Residues present in the sample, but not in the model, are shown in grey.

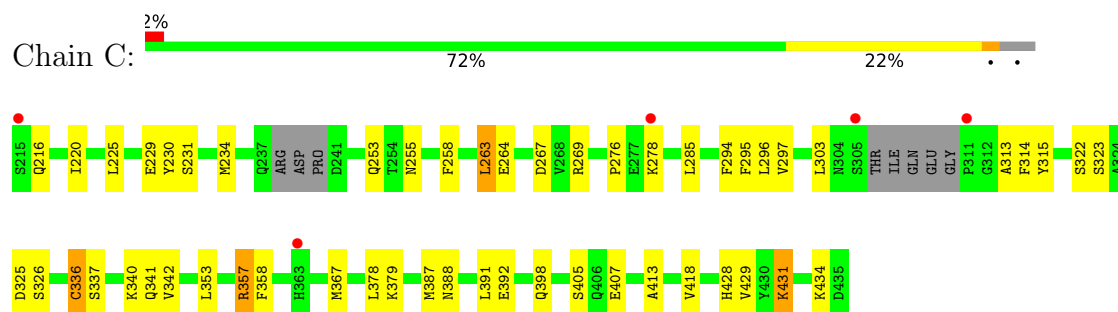
- Molecule 1: Transcriptional enhancer factor TEF-5



- Molecule 1: Transcriptional enhancer factor TEF-5



- Molecule 1: Transcriptional enhancer factor TEF-5



## 4 Data and refinement statistics

Property	Value	Source
Space group	P 21 21 21	Depositor
Cell constants a, b, c, $\alpha$ , $\beta$ , $\gamma$	46.17Å 101.74Å 149.08Å 90.00° 90.00° 90.00°	Depositor
Resolution (Å)	28.17 – 2.60 28.17 – 2.60	Depositor EDS
% Data completeness (in resolution range)	99.9 (28.17-2.60) 99.8 (28.17-2.60)	Depositor EDS
$R_{merge}$	0.03	Depositor
$R_{sym}$	(Not available)	Depositor
$\langle I/\sigma(I) \rangle$ <sup>1</sup>	2.27 (at 2.61Å)	Xtriage
Refinement program	PHENIX 1.20.1_4487	Depositor
R, $R_{free}$	0.212 , 0.270 0.212 , 0.270	Depositor DCC
$R_{free}$ test set	1128 reflections (5.00%)	wwPDB-VP
Wilson B-factor (Å <sup>2</sup> )	53.9	Xtriage
Anisotropy	0.133	Xtriage
Bulk solvent $k_{sol}$ (e/Å <sup>3</sup> ), $B_{sol}$ (Å <sup>2</sup> )	0.32 , 32.1	EDS
L-test for twinning <sup>2</sup>	$\langle  L  \rangle = 0.49$ , $\langle L^2 \rangle = 0.33$	Xtriage
Estimated twinning fraction	No twinning to report.	Xtriage
$F_o, F_c$ correlation	0.93	EDS
Total number of atoms	5379	wwPDB-VP
Average B, all atoms (Å <sup>2</sup> )	53.0	wwPDB-VP

Xtriage's analysis on translational NCS is as follows: *The largest off-origin peak in the Patterson function is 6.05% of the height of the origin peak. No significant pseudotranslation is detected.*

<sup>1</sup>Intensities estimated from amplitudes.

<sup>2</sup>Theoretical values of  $\langle |L| \rangle$ ,  $\langle L^2 \rangle$  for acentric reflections are 0.5, 0.333 respectively for untwinned datasets, and 0.375, 0.2 for perfectly twinned datasets.

## 5 Model quality [i](#)

### 5.1 Standard geometry [i](#)

Bond lengths and bond angles in the following residue types are not validated in this section: A1L1O

The Z score for a bond length (or angle) is the number of standard deviations the observed value is removed from the expected value. A bond length (or angle) with  $|Z| > 5$  is considered an outlier worth inspection. RMSZ is the root-mean-square of all Z scores of the bond lengths (or angles).

Mol	Chain	Bond lengths		Bond angles	
		RMSZ	$\# Z  > 5$	RMSZ	$\# Z  > 5$
1	A	0.53	0/1798	0.68	0/2429
1	B	0.51	0/1832	0.68	1/2476 (0.0%)
1	C	0.54	0/1766	0.72	1/2382 (0.0%)
All	All	0.53	0/5396	0.69	2/7287 (0.0%)

There are no bond length outliers.

All (2) bond angle outliers are listed below:

Mol	Chain	Res	Type	Atoms	Z	Observed(°)	Ideal(°)
1	C	263	LEU	CB-CG-CD2	-5.96	100.86	111.00
1	B	258	PHE	N-CA-C	-5.68	95.67	111.00

There are no chirality outliers.

There are no planarity outliers.

### 5.2 Too-close contacts [i](#)

In the following table, the Non-H and H(model) columns list the number of non-hydrogen atoms and hydrogen atoms in the chain respectively. The H(added) column lists the number of hydrogen atoms added and optimized by MolProbity. The Clashes column lists the number of clashes within the asymmetric unit, whereas Symm-Clashes lists symmetry-related clashes.

Mol	Chain	Non-H	H(model)	H(added)	Clashes	Symm-Clashes
1	A	1755	0	1729	35	0
1	B	1788	0	1757	27	0
1	C	1725	0	1697	40	0
2	A	24	0	0	1	0
2	B	24	0	0	0	0
2	C	24	0	0	0	0

*Continued on next page...*

*Continued from previous page...*

Mol	Chain	Non-H	H(model)	H(added)	Clashes	Symm-Clashes
3	A	15	0	0	0	0
3	B	11	0	0	0	0
3	C	13	0	0	1	0
All	All	5379	0	5183	96	0

The all-atom clashscore is defined as the number of clashes found per 1000 atoms (including hydrogen atoms). The all-atom clashscore for this structure is 9.

All (96) close contacts within the same asymmetric unit are listed below, sorted by their clash magnitude.

Atom-1	Atom-2	Interatomic distance (Å)	Clash overlap (Å)
1:C:267:ASP:OD1	1:C:269:ARG:HG3	1.87	0.73
1:C:269:ARG:HH11	1:C:434:LYS:HG2	1.56	0.69
1:C:337:SER:HB3	1:C:342:VAL:HG11	1.76	0.66
1:B:428:HIS:CE1	1:C:428:HIS:NE2	2.64	0.66
1:A:345:LYS:HE2	2:A:501:A1L1O:C18	2.28	0.63
1:C:234:MET:HE3	1:C:313:ALA:HB1	1.81	0.63
1:C:405:SER:HB3	1:C:407:GLU:HG3	1.81	0.63
1:A:342:VAL:HG11	1:A:370:TYR:CE1	2.34	0.63
1:A:421:SER:HB3	1:A:423:HIS:CG	2.35	0.62
1:A:421:SER:O	1:A:422:GLU:HB2	2.01	0.60
1:B:421:SER:HB2	1:B:423:HIS:CE1	2.36	0.60
1:C:297:VAL:HG22	1:C:429:VAL:HG22	1.85	0.59
1:B:399:VAL:HG22	1:B:411:VAL:HG22	1.85	0.58
1:A:303:LEU:HD12	1:A:418:VAL:HG22	1.85	0.58
1:B:391:LEU:HD12	1:B:418:VAL:HG13	1.87	0.56
1:B:270:GLN:CB	1:C:263:LEU:HD21	2.36	0.55
1:A:371:MET:O	1:A:375:ILE:HG13	2.07	0.55
1:C:434:LYS:NZ	3:C:602:HOH:O	2.40	0.54
1:B:228:LEU:HD11	1:B:322:SER:HB3	1.89	0.54
1:C:378:LEU:HD22	1:C:387:MET:HB3	1.89	0.54
1:A:227:LEU:HD13	1:A:321:TYR:CE2	2.43	0.53
1:A:233:PHE:HB3	1:A:247:LEU:HD23	1.89	0.53
1:A:276:PRO:HD3	1:A:336:CYS:SG	2.49	0.53
1:C:303:LEU:HD22	1:C:379:LYS:HG3	1.91	0.52
1:C:276:PRO:HD3	1:C:336:CYS:SG	2.49	0.52
1:A:217:ASP:O	1:A:218:ARG:HB3	2.09	0.52
1:C:234:MET:HA	1:C:314:PHE:O	2.10	0.52
1:C:303:LEU:HD11	1:C:378:LEU:HB3	1.93	0.51
1:A:232:ALA:HB3	1:A:249:VAL:HG22	1.93	0.51
1:B:428:HIS:NE2	1:C:428:HIS:NE2	2.59	0.51

*Continued on next page...*



*Continued from previous page...*

Atom-1	Atom-2	Interatomic distance (Å)	Clash overlap (Å)
1:B:428:HIS:NE2	1:C:428:HIS:CE1	2.79	0.50
1:A:275:PHE:CZ	1:A:413:ALA:HB1	2.46	0.50
1:A:264:GLU:OE1	1:A:428:HIS:HE1	1.95	0.50
1:A:382:PRO:HD2	1:A:386:MET:SD	2.52	0.49
1:B:270:GLN:HB3	1:C:263:LEU:HD21	1.94	0.48
1:C:253:GLN:NE2	1:C:255:ASN:O	2.46	0.48
1:A:239:ASP:HB2	1:A:240:PRO:HD2	1.94	0.48
1:C:388:ASN:O	1:C:392:GLU:HG3	2.13	0.48
1:A:228:LEU:HD11	1:A:322:SER:HB3	1.95	0.48
1:A:291:PRO:O	1:A:431:LYS:NZ	2.33	0.48
1:A:369:GLU:HG2	1:A:373:ASN:HD21	1.80	0.47
1:A:369:GLU:HG2	1:A:373:ASN:ND2	2.29	0.47
1:A:297:VAL:HG22	1:A:429:VAL:HG22	1.97	0.47
1:B:227:LEU:HD12	1:B:321:TYR:CE2	2.49	0.47
1:A:364:ARG:O	1:A:366:PRO:HD3	2.13	0.47
1:C:294:PHE:O	1:C:431:LYS:HE2	2.15	0.46
1:A:403:ARG:HE	1:A:403:ARG:HB3	1.50	0.46
1:C:326:SER:HB3	1:C:358:PHE:CE1	2.51	0.45
1:C:323:SER:OG	1:C:325:ASP:O	2.34	0.45
1:C:353:LEU:HD12	1:C:357:ARG:O	2.16	0.45
1:B:405:SER:O	1:B:406:GLN:HB2	2.16	0.45
1:C:278:LYS:HD3	1:C:278:LYS:HA	1.77	0.45
1:B:297:VAL:HG22	1:B:429:VAL:HG22	1.99	0.44
1:B:421:SER:HB2	1:B:423:HIS:ND1	2.32	0.44
1:B:275:PHE:CZ	1:B:413:ALA:HB1	2.52	0.44
1:A:342:VAL:HG11	1:A:370:TYR:CZ	2.53	0.44
1:A:217:ASP:C	1:A:219:THR:H	2.21	0.44
1:B:219:THR:HG22	1:B:253:GLN:HE21	1.84	0.43
1:C:322:SER:HA	1:C:358:PHE:O	2.18	0.43
1:C:388:ASN:OD1	1:C:418:VAL:HG12	2.18	0.43
1:A:345:LYS:HB3	1:A:345:LYS:HE3	1.65	0.43
1:B:255:ASN:O	1:B:256:PRO:C	2.55	0.43
1:B:331:VAL:HG22	1:B:400:VAL:HG13	2.01	0.43
1:C:296:LEU:HD12	1:C:413:ALA:O	2.18	0.43
1:C:378:LEU:HD11	1:C:391:LEU:HD21	2.01	0.43
1:A:300:TRP:HA	1:A:417:GLU:O	2.18	0.43
1:A:277:GLU:HG3	1:A:278:LYS:HE2	2.01	0.42
1:A:369:GLU:O	1:A:370:TYR:C	2.54	0.42
1:B:402:SER:HB3	1:B:405:SER:HB2	2.01	0.42
1:A:371:MET:HE2	1:A:371:MET:HB3	1.87	0.42
1:B:404:ASP:OD1	1:B:404:ASP:N	2.52	0.42

*Continued on next page...*

Continued from previous page...

Atom-1	Atom-2	Interatomic distance (Å)	Clash overlap (Å)
1:A:231:SER:OG	1:A:247:LEU:HD22	2.20	0.42
1:A:322:SER:HB2	1:A:357:ARG:HD2	2.00	0.42
1:B:249:VAL:HB	1:B:299:PHE:CD1	2.54	0.42
1:B:215:SER:N	1:B:428:HIS:HE2	2.17	0.42
1:B:258:PHE:O	1:B:259:SER:C	2.56	0.42
1:C:264:GLU:OE1	1:C:264:GLU:N	2.53	0.42
1:B:239:ASP:OD1	1:B:241:ASP:N	2.35	0.42
1:A:275:PHE:CE1	1:A:395:THR:HB	2.54	0.42
1:A:387:MET:HB3	1:A:418:VAL:HG21	2.01	0.42
1:B:430:TYR:OH	1:C:216:GLN:OE1	2.37	0.41
1:C:285:LEU:HD23	1:C:285:LEU:HA	1.71	0.41
1:A:251:ILE:HG13	1:A:299:PHE:HZ	1.85	0.41
1:C:225:LEU:HD12	1:C:323:SER:HB3	2.03	0.41
1:C:229:GLU:OE2	1:C:231:SER:OG	2.21	0.41
1:B:268:VAL:HA	1:B:432:LEU:HD22	2.03	0.41
1:C:234:MET:CE	1:C:313:ALA:HB1	2.48	0.41
1:C:315:TYR:HB3	1:C:367:MET:SD	2.60	0.41
1:C:234:MET:HE3	1:C:234:MET:HB2	1.88	0.40
1:A:285:LEU:HD23	1:A:285:LEU:HA	1.89	0.40
1:B:290:PRO:HB2	1:B:292:ASN:OD1	2.21	0.40
1:C:220:ILE:HG23	1:C:295:PHE:CD1	2.57	0.40
1:C:229:GLU:HG2	1:C:230:TYR:N	2.36	0.40
1:C:255:ASN:OD1	1:C:258:PHE:N	2.54	0.40
1:C:405:SER:HB3	1:C:407:GLU:CG	2.48	0.40
1:B:219:THR:HG22	1:B:253:GLN:NE2	2.36	0.40

There are no symmetry-related clashes.

## 5.3 Torsion angles

### 5.3.1 Protein backbone

In the following table, the Percentiles column shows the percent Ramachandran outliers of the chain as a percentile score with respect to all X-ray entries followed by that with respect to entries of similar resolution.

The Analysed column shows the number of residues for which the backbone conformation was analysed, and the total number of residues.

Mol	Chain	Analysed	Favoured	Allowed	Outliers	Percentiles	
1	A	213/221 (96%)	208 (98%)	5 (2%)	0	100	100

Continued on next page...

*Continued from previous page...*

Mol	Chain	Analysed	Favoured	Allowed	Outliers	Percentiles	
1	B	219/221 (99%)	212 (97%)	7 (3%)	0	100	100
1	C	207/221 (94%)	204 (99%)	3 (1%)	0	100	100
All	All	639/663 (96%)	624 (98%)	15 (2%)	0	100	100

There are no Ramachandran outliers to report.

### 5.3.2 Protein sidechains ⓘ

In the following table, the Percentiles column shows the percent sidechain outliers of the chain as a percentile score with respect to all X-ray entries followed by that with respect to entries of similar resolution.

The Analysed column shows the number of residues for which the sidechain conformation was analysed, and the total number of residues.

Mol	Chain	Analysed	Rotameric	Outliers	Percentiles	
1	A	196/200 (98%)	191 (97%)	5 (3%)	41	67
1	B	200/200 (100%)	193 (96%)	7 (4%)	31	57
1	C	193/200 (96%)	187 (97%)	6 (3%)	35	62
All	All	589/600 (98%)	571 (97%)	18 (3%)	35	62

All (18) residues with a non-rotameric sidechain are listed below:

Mol	Chain	Res	Type
1	A	240	PRO
1	A	299	PHE
1	A	354	GLU
1	A	389	SER
1	A	426	GLN
1	B	227	LEU
1	B	245	LYS
1	B	255	ASN
1	B	355	ASN
1	B	364	ARG
1	B	386	MET
1	B	423	HIS
1	C	336	CYS
1	C	340	LYS
1	C	341	GLN
1	C	357	ARG

*Continued on next page...*

*Continued from previous page...*

Mol	Chain	Res	Type
1	C	398	GLN
1	C	431	LYS

Sometimes sidechains can be flipped to improve hydrogen bonding and reduce clashes. All (3) such sidechains are listed below:

Mol	Chain	Res	Type
1	A	320	GLN
1	A	373	ASN
1	B	406	GLN

### 5.3.3 RNA [i](#)

There are no RNA molecules in this entry.

## 5.4 Non-standard residues in protein, DNA, RNA chains [i](#)

There are no non-standard protein/DNA/RNA residues in this entry.

## 5.5 Carbohydrates [i](#)

There are no oligosaccharides in this entry.

## 5.6 Ligand geometry [i](#)

3 ligands are modelled in this entry.

In the following table, the Counts columns list the number of bonds (or angles) for which Mogul statistics could be retrieved, the number of bonds (or angles) that are observed in the model and the number of bonds (or angles) that are defined in the Chemical Component Dictionary. The Link column lists molecule types, if any, to which the group is linked. The Z score for a bond length (or angle) is the number of standard deviations the observed value is removed from the expected value. A bond length (or angle) with  $|Z| > 2$  is considered an outlier worth inspection. RMSZ is the root-mean-square of all Z scores of the bond lengths (or angles).

Mol	Type	Chain	Res	Link	Bond lengths			Bond angles		
					Counts	RMSZ	# $ Z  > 2$	Counts	RMSZ	# $ Z  > 2$
2	A1L1O	C	501	-	26,26,26	1.51	2 (7%)	38,38,38	2.07	15 (39%)
2	A1L1O	A	501	-	26,26,26	1.47	3 (11%)	38,38,38	1.33	4 (10%)
2	A1L1O	B	501	-	26,26,26	1.43	2 (7%)	38,38,38	1.73	11 (28%)

In the following table, the Chirals column lists the number of chiral outliers, the number of chiral centers analysed, the number of these observed in the model and the number defined in the Chemical Component Dictionary. Similar counts are reported in the Torsion and Rings columns. '-' means no outliers of that kind were identified.

Mol	Type	Chain	Res	Link	Chirals	Torsions	Rings
2	A1L1O	C	501	-	-	2/16/25/25	0/3/3/3
2	A1L1O	A	501	-	-	6/16/25/25	0/3/3/3
2	A1L1O	B	501	-	-	6/16/25/25	0/3/3/3

All (7) bond length outliers are listed below:

Mol	Chain	Res	Type	Atoms	Z	Observed(Å)	Ideal(Å)
2	C	501	A1L1O	C17-N1	5.17	1.45	1.35
2	B	501	A1L1O	C17-N1	4.79	1.44	1.35
2	A	501	A1L1O	C17-N1	4.68	1.44	1.35
2	A	501	A1L1O	C5-C4	-3.92	1.32	1.40
2	C	501	A1L1O	C5-C4	-3.53	1.33	1.40
2	B	501	A1L1O	C5-C4	-3.41	1.33	1.40
2	A	501	A1L1O	O1-C17	-2.18	1.18	1.23

All (30) bond angle outliers are listed below:

Mol	Chain	Res	Type	Atoms	Z	Observed(°)	Ideal(°)
2	C	501	A1L1O	F3-C16-C13	-4.53	102.99	112.93
2	C	501	A1L1O	C2-C1-C5	-4.23	103.81	111.35
2	C	501	A1L1O	C11-C12-C13	-3.82	116.11	121.22
2	C	501	A1L1O	C14-C13-C12	3.50	123.19	117.97
2	B	501	A1L1O	F3-C16-C13	-3.25	105.79	112.93
2	C	501	A1L1O	F2-C16-C13	-3.24	105.82	112.93
2	C	501	A1L1O	C19-C18-C17	-3.22	106.77	112.72
2	B	501	A1L1O	C6-C7-C10	-3.18	115.61	120.86
2	B	501	A1L1O	C11-C10-C7	-3.00	116.16	121.36
2	C	501	A1L1O	C14-C15-C10	-2.92	116.94	121.13
2	C	501	A1L1O	C8-C7-C6	2.89	122.25	118.16
2	C	501	A1L1O	C9-C5-C4	2.84	122.47	118.98
2	B	501	A1L1O	C2-C1-C5	-2.83	106.31	111.35
2	C	501	A1L1O	C6-C7-C10	-2.79	116.25	120.86
2	A	501	A1L1O	C1-C2-N1	2.78	113.32	110.04
2	B	501	A1L1O	C14-C13-C12	2.77	122.09	117.97
2	B	501	A1L1O	C14-C15-C10	-2.75	117.18	121.13
2	B	501	A1L1O	C8-C7-C6	2.74	122.04	118.16
2	B	501	A1L1O	C11-C12-C13	-2.70	117.61	121.22
2	C	501	A1L1O	C11-C10-C7	-2.50	117.03	121.36

*Continued on next page...*

*Continued from previous page...*

Mol	Chain	Res	Type	Atoms	Z	Observed(°)	Ideal(°)
2	B	501	A1L1O	C7-C6-C4	-2.42	118.28	121.90
2	C	501	A1L1O	C7-C6-C4	-2.35	118.38	121.90
2	A	501	A1L1O	C9-C5-C4	2.32	121.83	118.98
2	A	501	A1L1O	C8-C7-C6	2.21	121.30	118.16
2	C	501	A1L1O	C11-C10-C15	2.21	121.99	117.59
2	A	501	A1L1O	F3-C16-C13	-2.19	108.11	112.93
2	B	501	A1L1O	C11-C10-C15	2.16	121.89	117.59
2	C	501	A1L1O	F3-C16-F1	2.09	113.39	105.72
2	C	501	A1L1O	C8-C9-C5	-2.03	118.72	121.39
2	B	501	A1L1O	F2-C16-C13	-2.00	108.53	112.93

There are no chirality outliers.

All (14) torsion outliers are listed below:

Mol	Chain	Res	Type	Atoms
2	B	501	A1L1O	C11-C10-C7-C6
2	B	501	A1L1O	N1-C17-C18-C19
2	C	501	A1L1O	N1-C17-C18-C19
2	B	501	A1L1O	C11-C10-C7-C8
2	B	501	A1L1O	C15-C10-C7-C6
2	A	501	A1L1O	N1-C17-C18-C19
2	A	501	A1L1O	C15-C10-C7-C6
2	A	501	A1L1O	O1-C17-C18-C19
2	B	501	A1L1O	O1-C17-C18-C19
2	C	501	A1L1O	O1-C17-C18-C19
2	A	501	A1L1O	C11-C10-C7-C6
2	A	501	A1L1O	C15-C10-C7-C8
2	A	501	A1L1O	C11-C10-C7-C8
2	B	501	A1L1O	C15-C10-C7-C8

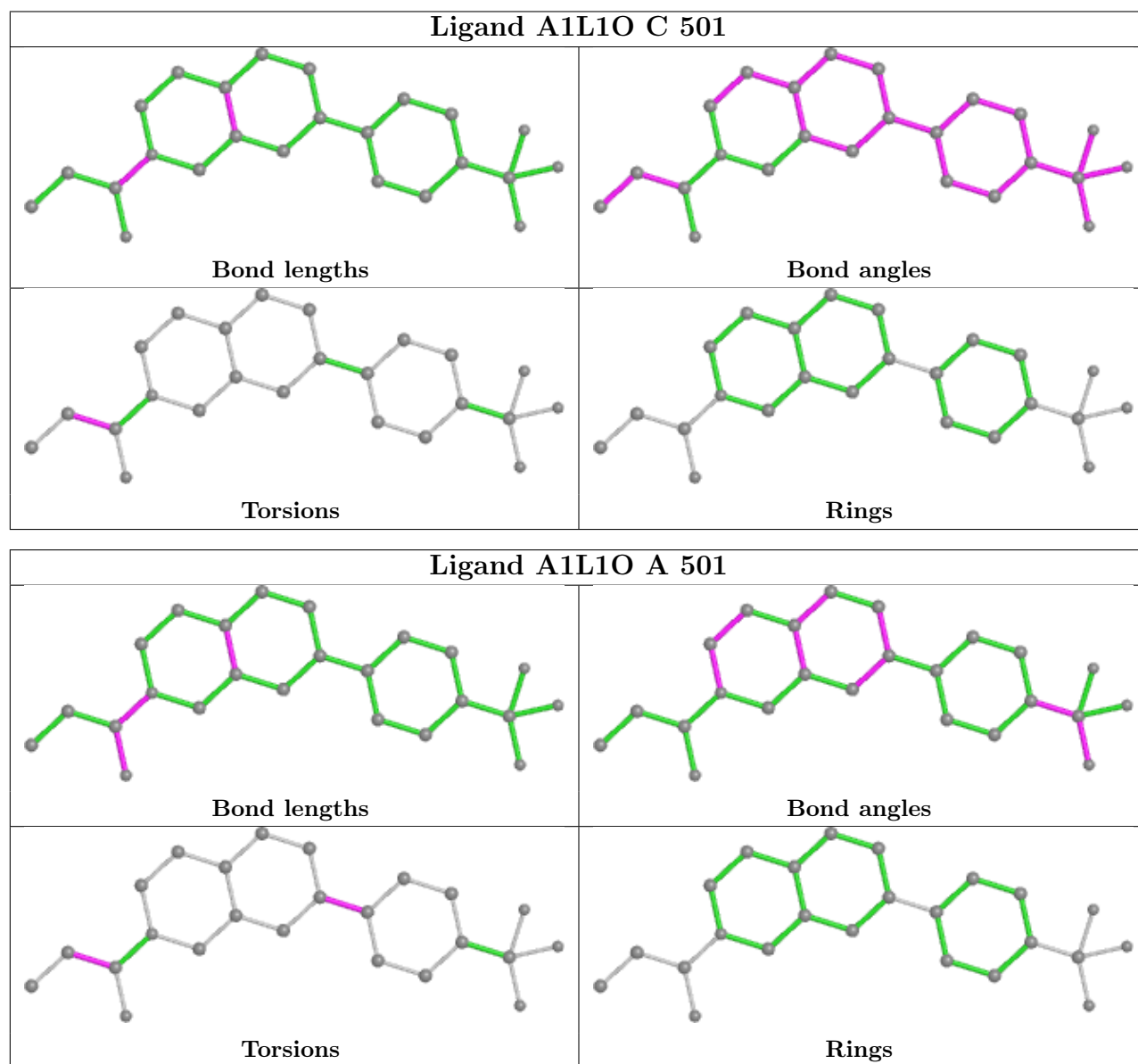
There are no ring outliers.

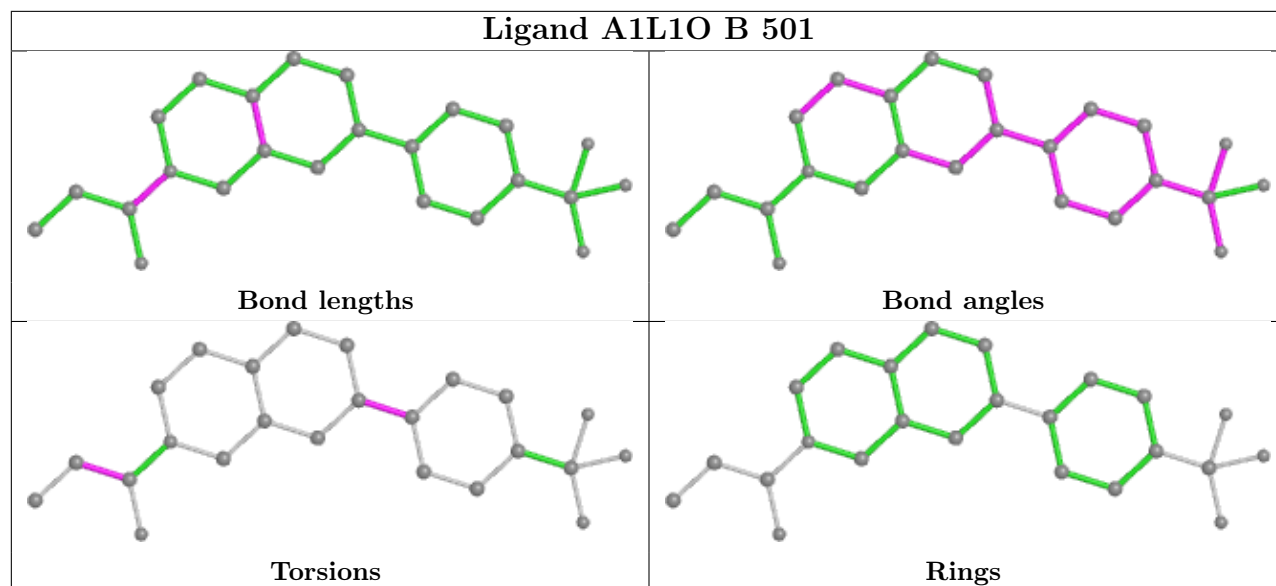
1 monomer is involved in 1 short contact:

Mol	Chain	Res	Type	Clashes	Symm-Clashes
2	A	501	A1L1O	1	0

The following is a two-dimensional graphical depiction of Mogul quality analysis of bond lengths, bond angles, torsion angles, and ring geometry for all instances of the Ligand of Interest. In addition, ligands with molecular weight > 250 and outliers as shown on the validation Tables will also be included. For torsion angles, if less than 5% of the Mogul distribution of torsion angles is within 10 degrees of the torsion angle in question, then that torsion angle is considered an outlier. Any bond that is central to one or more torsion angles identified as an outlier by Mogul will be

highlighted in the graph. For rings, the root-mean-square deviation (RMSD) between the ring in question and similar rings identified by Mogul is calculated over all ring torsion angles. If the average RMSD is greater than 60 degrees and the minimal RMSD between the ring in question and any Mogul-identified rings is also greater than 60 degrees, then that ring is considered an outlier. The outliers are highlighted in purple. The color gray indicates Mogul did not find sufficient equivalents in the CSD to analyse the geometry.





## 5.7 Other polymers [i](#)

There are no such residues in this entry.

## 5.8 Polymer linkage issues [i](#)

There are no chain breaks in this entry.



## 6 Fit of model and data [i](#)

### 6.1 Protein, DNA and RNA chains [i](#)

In the following table, the column labelled ‘#RSRZ > 2’ contains the number (and percentage) of RSRZ outliers, followed by percent RSRZ outliers for the chain as percentile scores relative to all X-ray entries and entries of similar resolution. The OWAB column contains the minimum, median, 95<sup>th</sup> percentile and maximum values of the occupancy-weighted average B-factor per residue. The column labelled ‘Q < 0.9’ lists the number of (and percentage) of residues with an average occupancy less than 0.9.

Mol	Chain	Analysed	<RSRZ>	#RSRZ>2	OWAB(Å <sup>2</sup> )	Q<0.9
1	A	217/221 (98%)	-0.21	4 (1%) 67 62	36, 50, 71, 86	0
1	B	221/221 (100%)	-0.02	6 (2%) 56 50	36, 51, 84, 112	0
1	C	213/221 (96%)	-0.10	5 (2%) 61 55	36, 50, 80, 94	0
All	All	651/663 (98%)	-0.11	15 (2%) 61 55	36, 50, 79, 112	0

All (15) RSRZ outliers are listed below:

Mol	Chain	Res	Type	RSRZ
1	C	215	SER	3.1
1	B	258	PHE	2.9
1	C	311	PRO	2.9
1	B	423	HIS	2.7
1	A	424	GLY	2.6
1	B	215	SER	2.5
1	C	305	SER	2.4
1	A	310	GLY	2.4
1	C	278	LYS	2.3
1	B	307	ILE	2.2
1	A	423	HIS	2.2
1	B	403	ARG	2.1
1	A	306	THR	2.1
1	B	256	PRO	2.0
1	C	363	HIS	2.0

### 6.2 Non-standard residues in protein, DNA, RNA chains [i](#)

There are no non-standard protein/DNA/RNA residues in this entry.

## 6.3 Carbohydrates [i](#)

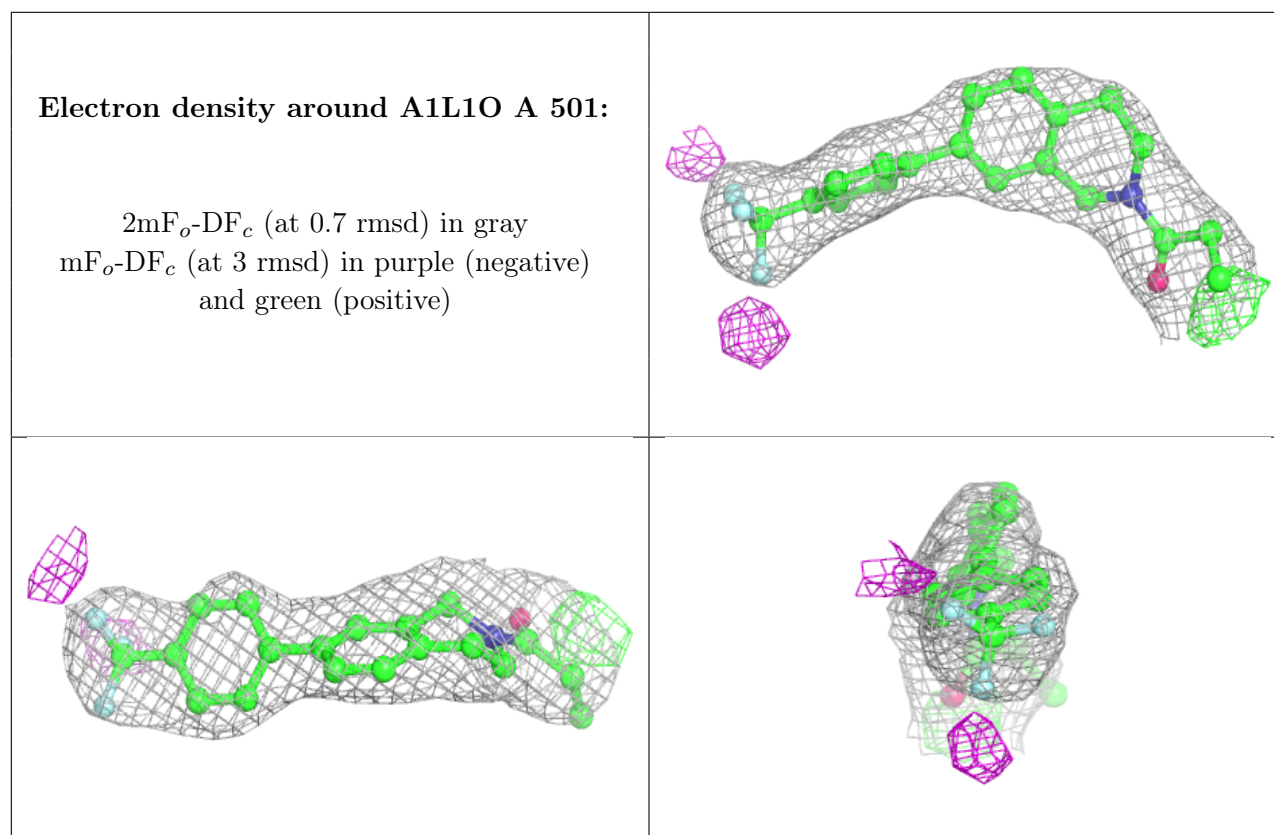
There are no monosaccharides in this entry.

## 6.4 Ligands [i](#)

In the following table, the Atoms column lists the number of modelled atoms in the group and the number defined in the chemical component dictionary. The B-factors column lists the minimum, median, 95<sup>th</sup> percentile and maximum values of B factors of atoms in the group. The column labelled 'Q< 0.9' lists the number of atoms with occupancy less than 0.9.

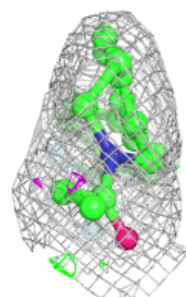
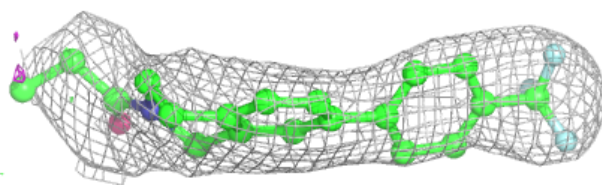
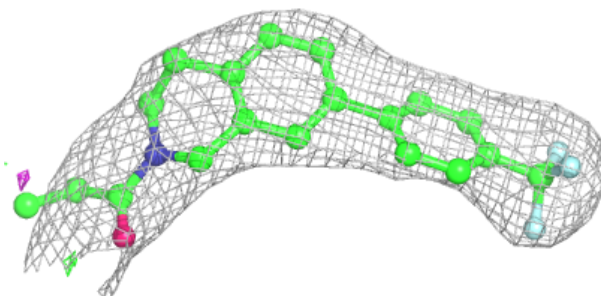
Mol	Type	Chain	Res	Atoms	RSCC	RSR	B-factors( $\text{\AA}^2$ )	Q<0.9
2	A1L1O	A	501	24/24	0.88	0.13	42,48,55,58	0
2	A1L1O	C	501	24/24	0.90	0.11	42,50,58,61	0
2	A1L1O	B	501	24/24	0.92	0.10	43,48,52,58	0

The following is a graphical depiction of the model fit to experimental electron density of all instances of the Ligand of Interest. In addition, ligands with molecular weight > 250 and outliers as shown on the geometry validation Tables will also be included. Each fit is shown from different orientation to approximate a three-dimensional view.

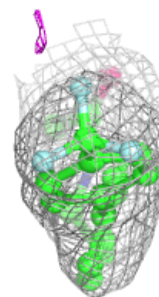
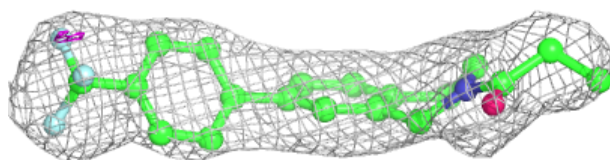
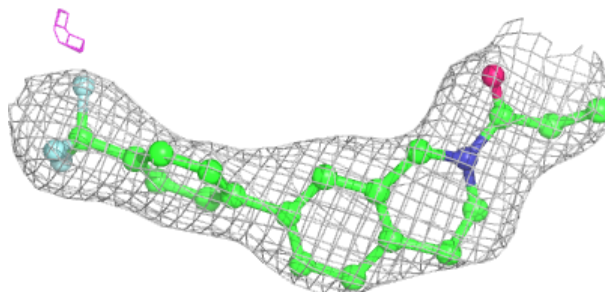


**Electron density around A1L1O C 501:**

$2mF_o-DF_c$  (at 0.7 rmsd) in gray  
 $mF_o-DF_c$  (at 3 rmsd) in purple (negative)  
and green (positive)

**Electron density around A1L1O B 501:**

$2mF_o-DF_c$  (at 0.7 rmsd) in gray  
 $mF_o-DF_c$  (at 3 rmsd) in purple (negative)  
and green (positive)



## 6.5 Other polymers [i](#)

There are no such residues in this entry.