



# Full wwPDB X-ray Structure Validation Report ⓘ

Apr 28, 2024 – 10:07 am BST

PDB ID : 4ZA4  
Title : Structure of *A. niger* Fdc1 with the prenylated-flavin cofactor in the iminium form.  
Authors : Payne, K.A.P.; Leys, D.  
Deposited on : 2015-04-13  
Resolution : 1.22 Å(reported)

This is a Full wwPDB X-ray Structure Validation Report for a publicly released PDB entry.

We welcome your comments at [validation@mail.wwpdb.org](mailto:validation@mail.wwpdb.org)

A user guide is available at

<https://www.wwpdb.org/validation/2017/XrayValidationReportHelp>

with specific help available everywhere you see the ⓘ symbol.

The types of validation reports are described at

<http://www.wwpdb.org/validation/2017/FAQs#types>.

---

The following versions of software and data (see [references ⓘ](#)) were used in the production of this report:

MolProbity	:	4.02b-467
Mogul	:	1.8.4, CSD as541be (2020)
Xtriage (Phenix)	:	1.13
EDS	:	2.36.2
buster-report	:	1.1.7 (2018)
Percentile statistics	:	20191225.v01 (using entries in the PDB archive December 25th 2019)
Refmac	:	5.8.0158
CCP4	:	7.0.044 (Gargrove)
Ideal geometry (proteins)	:	Engh & Huber (2001)
Ideal geometry (DNA, RNA)	:	Parkinson et al. (1996)
Validation Pipeline (wwPDB-VP)	:	2.36.2

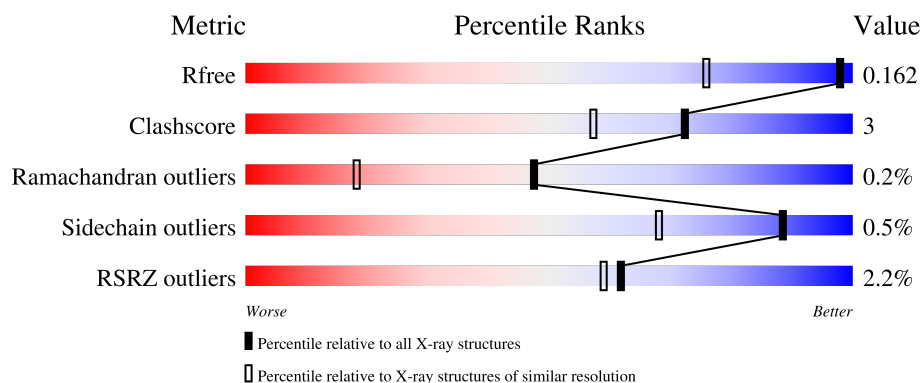
# 1 Overall quality at a glance

The following experimental techniques were used to determine the structure:

*X-RAY DIFFRACTION*


The reported resolution of this entry is 1.22 Å.

Percentile scores (ranging between 0-100) for global validation metrics of the entry are shown in the following graphic. The table shows the number of entries on which the scores are based.



Metric	Whole archive (#Entries)	Similar resolution (#Entries, resolution range(Å))
$R_{free}$	130704	1232 (1.24-1.20)
Clashscore	141614	1294 (1.24-1.20)
Ramachandran outliers	138981	1251 (1.24-1.20)
Sidechain outliers	138945	1250 (1.24-1.20)
RSRZ outliers	127900	1209 (1.24-1.20)

The table below summarises the geometric issues observed across the polymeric chains and their fit to the electron density. The red, orange, yellow and green segments of the lower bar indicate the fraction of residues that contain outliers for  $\geq 3$ , 2, 1 and 0 types of geometric quality criteria respectively. A grey segment represents the fraction of residues that are not modelled. The numeric value for each fraction is indicated below the corresponding segment, with a dot representing fractions  $\leq 5\%$ . The upper red bar (where present) indicates the fraction of residues that have poor fit to the electron density. The numeric value is given above the bar.

Mol	Chain	Length	Quality of chain
1	A	508	

## 2 Entry composition

There are 5 unique types of molecules in this entry. The entry contains 4595 atoms, of which 0 are hydrogens and 0 are deuteriums.

In the tables below, the ZeroOcc column contains the number of atoms modelled with zero occupancy, the AltConf column contains the number of residues with at least one atom in alternate conformation and the Trace column contains the number of residues modelled with at most 2 atoms.

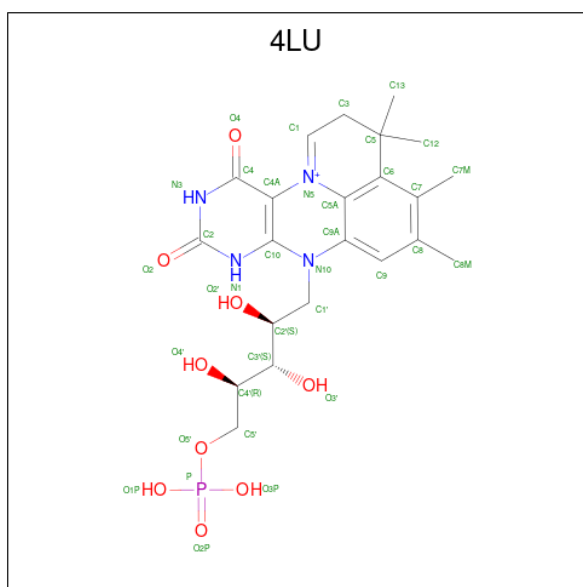
- Molecule 1 is a protein called Fdc1.

Mol	Chain	Residues	Atoms					ZeroOcc	AltConf	Trace
			Total	C	N	O	S			
1	A	500	4109	2600	706	773	30	0	34	1

There are 8 discrepancies between the modelled and reference sequences:

Chain	Residue	Modelled	Actual	Comment	Reference
A	499B	LEU	-	expression tag	UNP A2QHE5
A	499C	GLU	-	expression tag	UNP A2QHE5
A	502	HIS	-	expression tag	UNP A2QHE5
A	503	HIS	-	expression tag	UNP A2QHE5
A	504	HIS	-	expression tag	UNP A2QHE5
A	505	HIS	-	expression tag	UNP A2QHE5
A	506	HIS	-	expression tag	UNP A2QHE5
A	507	HIS	-	expression tag	UNP A2QHE5

- Molecule 2 is 1-deoxy-5-O-phosphono-1-(3,3,4,5-tetramethyl-9,11-dioxo-2,3,8,9,10,11-hexahydro-7H-quinolino[1,8-fg]pteridin-12-ium-7-yl)-D-ribose (three-letter code: 4LU) (formula:  $C_{22}H_{30}N_4O_9P$ ).



Mol	Chain	Residues	Atoms					ZeroOcc	AltConf
2	A	1	Total	C	N	O	P	0	0
			36	22	4	9	1		

- Molecule 3 is MANGANESE (II) ION (three-letter code: MN) (formula: Mn).

Mol	Chain	Residues	Atoms		ZeroOcc	AltConf
3	A	1	Total	Mn	0	0
			1	1		

- Molecule 4 is POTASSIUM ION (three-letter code: K) (formula: K).

Mol	Chain	Residues	Atoms		ZeroOcc	AltConf
4	A	2	Total	K	0	0
			2	2		

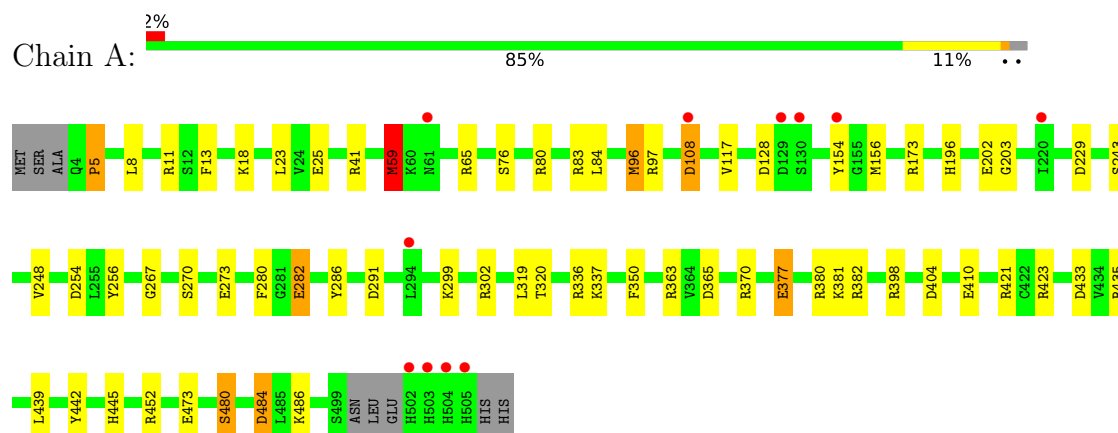
- Molecule 5 is water.

Mol	Chain	Residues	Atoms		ZeroOcc	AltConf
5	A	447	Total	O	0	0
			447	447		

### 3 Residue-property plots [i](#)

These plots are drawn for all protein, RNA, DNA and oligosaccharide chains in the entry. The first graphic for a chain summarises the proportions of the various outlier classes displayed in the second graphic. The second graphic shows the sequence view annotated by issues in geometry and electron density. Residues are color-coded according to the number of geometric quality criteria for which they contain at least one outlier: green = 0, yellow = 1, orange = 2 and red = 3 or more. A red dot above a residue indicates a poor fit to the electron density ( $RSRZ > 2$ ). Stretches of 2 or more consecutive residues without any outlier are shown as a green connector. Residues present in the sample, but not in the model, are shown in grey.

#### • Molecule 1: Fdc1



## 4 Data and refinement statistics

Property	Value	Source
Space group	P 21 21 2	Depositor
Cell constants a, b, c, $\alpha$ , $\beta$ , $\gamma$	95.99Å 63.93Å 87.63Å 90.00° 90.00° 90.00°	Depositor
Resolution (Å)	33.82 – 1.22 33.82 – 1.22	Depositor EDS
% Data completeness (in resolution range)	100.0 (33.82-1.22) 100.0 (33.82-1.22)	Depositor EDS
$R_{merge}$	(Not available)	Depositor
$R_{sym}$	(Not available)	Depositor
$\langle I/\sigma(I) \rangle$ <sup>1</sup>	2.86 (at 1.22Å)	Xtriage
Refinement program	REFMAC 5.5.0102	Depositor
R, $R_{free}$	0.146 , 0.161 0.147 , 0.162	Depositor DCC
$R_{free}$ test set	8041 reflections (5.02%)	wwPDB-VP
Wilson B-factor (Å <sup>2</sup> )	7.3	Xtriage
Anisotropy	1.710	Xtriage
Bulk solvent $k_{sol}$ (e/Å <sup>3</sup> ), $B_{sol}$ (Å <sup>2</sup> )	0.38 , 50.5	EDS
L-test for twinning <sup>2</sup>	$\langle  L  \rangle = 0.48$ , $\langle L^2 \rangle = 0.31$	Xtriage
Estimated twinning fraction	No twinning to report.	Xtriage
$F_o, F_c$ correlation	0.97	EDS
Total number of atoms	4595	wwPDB-VP
Average B, all atoms (Å <sup>2</sup> )	13.0	wwPDB-VP

Xtriage's analysis on translational NCS is as follows: *The largest off-origin peak in the Patterson function is 3.95% of the height of the origin peak. No significant pseudotranslation is detected.*

<sup>1</sup>Intensities estimated from amplitudes.

<sup>2</sup>Theoretical values of  $\langle |L| \rangle$ ,  $\langle L^2 \rangle$  for acentric reflections are 0.5, 0.333 respectively for untwinned datasets, and 0.375, 0.2 for perfectly twinned datasets.

## 5 Model quality [i](#)

### 5.1 Standard geometry [i](#)

Bond lengths and bond angles in the following residue types are not validated in this section: MN, K, 4LU

The Z score for a bond length (or angle) is the number of standard deviations the observed value is removed from the expected value. A bond length (or angle) with  $|Z| > 5$  is considered an outlier worth inspection. RMSZ is the root-mean-square of all Z scores of the bond lengths (or angles).

Mol	Chain	Bond lengths		Bond angles	
		RMSZ	$\# Z  > 5$	RMSZ	$\# Z  > 5$
1	A	1.42	37/4210 (0.9%)	1.28	45/5720 (0.8%)

Chiral center outliers are detected by calculating the chiral volume of a chiral center and verifying if the center is modelled as a planar moiety or with the opposite hand. A planarity outlier is detected by checking planarity of atoms in a peptide group, atoms in a mainchain group or atoms of a sidechain that are expected to be planar.

Mol	Chain	#Chirality outliers	#Planarity outliers
1	A	0	1

All (37) bond length outliers are listed below:

Mol	Chain	Res	Type	Atoms	Z	Observed(Å)	Ideal(Å)
1	A	273	GLU	CG-CD	11.05	1.68	1.51
1	A	410	GLU	CD-OE2	10.57	1.37	1.25
1	A	377[A]	GLU	CD-OE1	9.95	1.36	1.25
1	A	377[B]	GLU	CD-OE1	9.95	1.36	1.25
1	A	273	GLU	CD-OE2	8.30	1.34	1.25
1	A	380	ARG	CA-CB	8.11	1.71	1.53
1	A	154	TYR	CG-CD1	7.30	1.48	1.39
1	A	337	LYS	CE-NZ	-7.29	1.30	1.49
1	A	410	GLU	CD-OE1	7.16	1.33	1.25
1	A	336	ARG	CZ-NH1	-7.11	1.23	1.33
1	A	398	ARG	CZ-NH1	-6.82	1.24	1.33
1	A	65	ARG	NE-CZ	6.61	1.41	1.33
1	A	282[A]	GLU	CD-OE1	6.55	1.32	1.25
1	A	282[B]	GLU	CD-OE1	6.55	1.32	1.25
1	A	256	TYR	CE1-CZ	-6.48	1.30	1.38
1	A	65	ARG	CZ-NH1	-6.42	1.24	1.33
1	A	473	GLU	CD-OE1	6.31	1.32	1.25
1	A	480[A]	SER	CB-OG	6.31	1.50	1.42

*Continued on next page...*

*Continued from previous page...*

Mol	Chain	Res	Type	Atoms	Z	Observed(Å)	Ideal(Å)
1	A	480[B]	SER	CB-OG	6.31	1.50	1.42
1	A	202	GLU	CD-OE2	6.29	1.32	1.25
1	A	5	PRO	CB-CG	-5.98	1.20	1.50
1	A	18[A]	LYS	CD-CE	5.78	1.65	1.51
1	A	18[B]	LYS	CD-CE	5.78	1.65	1.51
1	A	154	TYR	CD2-CE2	-5.62	1.30	1.39
1	A	243	SER	CA-CB	5.57	1.61	1.52
1	A	286	TYR	CG-CD1	-5.55	1.31	1.39
1	A	23[A]	LEU	C-O	5.39	1.33	1.23
1	A	23[B]	LEU	C-O	5.39	1.33	1.23
1	A	243	SER	CB-OG	5.33	1.49	1.42
1	A	377[A]	GLU	CD-OE2	5.17	1.31	1.25
1	A	377[B]	GLU	CD-OE2	5.17	1.31	1.25
1	A	203	GLY	CA-C	-5.12	1.43	1.51
1	A	370	ARG	CZ-NH2	5.11	1.39	1.33
1	A	83	ARG	CB-CG	-5.06	1.38	1.52
1	A	452	ARG	CB-CG	-5.04	1.39	1.52
1	A	486	LYS	CD-CE	-5.03	1.38	1.51
1	A	13	PHE	CG-CD1	-5.01	1.31	1.38

All (45) bond angle outliers are listed below:

Mol	Chain	Res	Type	Atoms	Z	Observed(°)	Ideal(°)
1	A	380	ARG	CG-CD-NE	10.60	134.06	111.80
1	A	404	ASP	CB-CG-OD2	10.49	127.75	118.30
1	A	382	ARG	NE-CZ-NH2	-9.24	115.68	120.30
1	A	254	ASP	CB-CG-OD2	-9.13	110.08	118.30
1	A	377[A]	GLU	OE1-CD-OE2	8.45	133.44	123.30
1	A	377[B]	GLU	OE1-CD-OE2	8.45	133.44	123.30
1	A	433	ASP	CB-CG-OD2	-8.34	110.80	118.30
1	A	435	ARG	NE-CZ-NH2	-8.30	116.15	120.30
1	A	291	ASP	CB-CG-OD1	-8.28	110.85	118.30
1	A	380	ARG	NE-CZ-NH1	8.25	124.43	120.30
1	A	337	LYS	CD-CE-NZ	7.80	129.65	111.70
1	A	41	ARG	NE-CZ-NH1	-7.76	116.42	120.30
1	A	398	ARG	NE-CZ-NH1	7.68	124.14	120.30
1	A	108[A]	ASP	CB-CG-OD1	-7.12	111.89	118.30
1	A	108[B]	ASP	CB-CG-OD1	-7.12	111.89	118.30
1	A	97	ARG	NE-CZ-NH1	7.07	123.84	120.30
1	A	65	ARG	NE-CZ-NH2	-6.84	116.88	120.30
1	A	377[A]	GLU	CG-CD-OE2	-6.73	104.84	118.30
1	A	377[B]	GLU	CG-CD-OE2	-6.73	104.84	118.30

*Continued on next page...*



*Continued from previous page...*

Mol	Chain	Res	Type	Atoms	Z	Observed(°)	Ideal(°)
1	A	365	ASP	CB-CG-OD1	6.70	124.33	118.30
1	A	302	ARG	NE-CZ-NH2	-6.58	117.01	120.30
1	A	11	ARG	NE-CZ-NH1	6.14	123.37	120.30
1	A	433	ASP	CB-CG-OD1	6.13	123.82	118.30
1	A	84[A]	LEU	CB-CG-CD1	-6.08	100.67	111.00
1	A	84[B]	LEU	CB-CG-CD1	-6.08	100.67	111.00
1	A	370	ARG	NE-CZ-NH2	5.96	123.28	120.30
1	A	421	ARG	NE-CZ-NH1	5.94	123.27	120.30
1	A	382	ARG	CG-CD-NE	-5.89	99.42	111.80
1	A	13	PHE	CB-CG-CD2	-5.89	116.68	120.80
1	A	398	ARG	NE-CZ-NH2	-5.70	117.45	120.30
1	A	484[A]	ASP	CB-CG-OD1	5.56	123.31	118.30
1	A	484[B]	ASP	CB-CG-OD1	5.56	123.31	118.30
1	A	128	ASP	CB-CG-OD2	-5.55	113.31	118.30
1	A	80	ARG	NE-CZ-NH1	5.55	123.07	120.30
1	A	286	TYR	CB-CG-CD1	5.52	124.31	121.00
1	A	423	ARG	NE-CZ-NH2	-5.32	117.64	120.30
1	A	65	ARG	NH1-CZ-NH2	5.23	125.15	119.40
1	A	173	ARG	NE-CZ-NH1	5.22	122.91	120.30
1	A	156	MET	N-CA-CB	-5.15	101.33	110.60
1	A	128	ASP	CB-CG-OD1	5.13	122.91	118.30
1	A	229	ASP	CB-CG-OD2	-5.06	113.75	118.30
1	A	286	TYR	CB-CG-CD2	-5.05	117.97	121.00
1	A	96[A]	MET	CG-SD-CE	5.04	108.27	100.20
1	A	96[B]	MET	CG-SD-CE	5.04	108.27	100.20
1	A	365	ASP	CB-CG-OD2	-5.04	113.77	118.30

There are no chirality outliers.

All (1) planarity outliers are listed below:

Mol	Chain	Res	Type	Group
1	A	59[B]	MET	Mainchain

## 5.2 Too-close contacts

In the following table, the Non-H and H(model) columns list the number of non-hydrogen atoms and hydrogen atoms in the chain respectively. The H(added) column lists the number of hydrogen atoms added and optimized by MolProbity. The Clashes column lists the number of clashes within the asymmetric unit, whereas Symm-Clashes lists symmetry-related clashes.

Mol	Chain	Non-H	H(model)	H(added)	Clashes	Symm-Clashes
1	A	4109	0	3986	26	0
2	A	36	0	28	2	0
3	A	1	0	0	0	0
4	A	2	0	0	0	0
5	A	447	0	0	15	2
All	All	4595	0	4014	28	2

The all-atom clashscore is defined as the number of clashes found per 1000 atoms (including hydrogen atoms). The all-atom clashscore for this structure is 3.

All (28) close contacts within the same asymmetric unit are listed below, sorted by their clash magnitude.

Atom-1	Atom-2	Interatomic distance (Å)	Clash overlap (Å)
1:A:381:LYS:HG3	5:A:709:HOH:O	1.51	1.10
2:A:601:4LU:H14	2:A:601:4LU:H13	1.52	0.92
2:A:601:4LU:H14	2:A:601:4LU:C12	2.12	0.79
1:A:59[A]:MET:SD	5:A:882:HOH:O	2.43	0.75
1:A:59[A]:MET:CE	5:A:882:HOH:O	2.36	0.74
1:A:280:PHE:O	1:A:282[A]:GLU:HG3	1.94	0.68
1:A:25:GLU:OE1	5:A:701:HOH:O	2.10	0.68
1:A:484[A]:ASP:OD1	5:A:702:HOH:O	2.12	0.67
1:A:381:LYS:CG	5:A:709:HOH:O	2.24	0.63
1:A:196[B]:HIS:HE1	1:A:270:SER:O	1.83	0.62
1:A:381:LYS:HE3	5:A:709:HOH:O	2.00	0.61
1:A:59[A]:MET:HE3	5:A:882:HOH:O	1.98	0.60
1:A:439[A]:LEU:N	1:A:439[A]:LEU:HD12	2.21	0.56
1:A:76[B]:SER:HB3	5:A:969:HOH:O	2.08	0.53
1:A:445:HIS:HE1	5:A:869:HOH:O	1.94	0.50
1:A:117:VAL:HG23	1:A:248[B]:VAL:HG22	1.93	0.50
1:A:108[A]:ASP:OD1	1:A:108[A]:ASP:C	2.47	0.50
1:A:59[A]:MET:HG2	5:A:840:HOH:O	2.11	0.50
1:A:5:PRO:HG2	1:A:8:LEU:HD12	1.94	0.49
1:A:196[A]:HIS:HE1	1:A:270:SER:O	1.96	0.48
1:A:196[B]:HIS:CE1	1:A:270:SER:O	2.64	0.47
1:A:363:ARG:NH1	5:A:707:HOH:O	2.48	0.46
1:A:377[B]:GLU:HG3	5:A:709:HOH:O	2.16	0.43
1:A:381:LYS:CE	5:A:709:HOH:O	2.64	0.42
1:A:96[B]:MET:HG2	1:A:350:PHE:CE1	2.55	0.42
1:A:381:LYS:CD	5:A:709:HOH:O	2.65	0.42
1:A:319:LEU:HA	1:A:320:THR:HA	1.94	0.41
1:A:267:GLY:HA3	1:A:299:LYS:O	2.21	0.40

All (2) symmetry-related close contacts are listed below. The label for Atom-2 includes the symmetry operator and encoded unit-cell translations to be applied.

Atom-1	Atom-2	Interatomic distance (Å)	Clash overlap (Å)
5:A:758:HOH:O	5:A:758:HOH:O[2_655]	1.20	1.00
5:A:741:HOH:O	5:A:888:HOH:O[2_655]	1.54	0.66

## 5.3 Torsion angles [i](#)

### 5.3.1 Protein backbone [i](#)

In the following table, the Percentiles column shows the percent Ramachandran outliers of the chain as a percentile score with respect to all X-ray entries followed by that with respect to entries of similar resolution.

The Analysed column shows the number of residues for which the backbone conformation was analysed, and the total number of residues.

Mol	Chain	Analysed	Favoured	Allowed	Outliers	Percentiles
1	A	530/508 (104%)	517 (98%)	11 (2%)	2 (0%)	34 11

All (2) Ramachandran outliers are listed below:

Mol	Chain	Res	Type
1	A	59[A]	MET
1	A	59[B]	MET

### 5.3.2 Protein sidechains [i](#)

In the following table, the Percentiles column shows the percent sidechain outliers of the chain as a percentile score with respect to all X-ray entries followed by that with respect to entries of similar resolution.

The Analysed column shows the number of residues for which the sidechain conformation was analysed, and the total number of residues.

Mol	Chain	Analysed	Rotameric	Outliers	Percentiles
1	A	443/430 (103%)	440 (99%)	3 (1%)	84 60

All (3) residues with a non-rotameric sidechain are listed below:

Mol	Chain	Res	Type
1	A	442	TYR

*Continued on next page...*

*Continued from previous page...*

Mol	Chain	Res	Type
1	A	480[A]	SER
1	A	480[B]	SER

Sometimes sidechains can be flipped to improve hydrogen bonding and reduce clashes. There are no such sidechains identified.

### 5.3.3 RNA [i](#)

There are no RNA molecules in this entry.

## 5.4 Non-standard residues in protein, DNA, RNA chains [i](#)

There are no non-standard protein/DNA/RNA residues in this entry.

## 5.5 Carbohydrates [i](#)

There are no monosaccharides in this entry.

## 5.6 Ligand geometry [i](#)

Of 4 ligands modelled in this entry, 3 are monoatomic - leaving 1 for Mogul analysis.

In the following table, the Counts columns list the number of bonds (or angles) for which Mogul statistics could be retrieved, the number of bonds (or angles) that are observed in the model and the number of bonds (or angles) that are defined in the Chemical Component Dictionary. The Link column lists molecule types, if any, to which the group is linked. The Z score for a bond length (or angle) is the number of standard deviations the observed value is removed from the expected value. A bond length (or angle) with  $|Z| > 2$  is considered an outlier worth inspection. RMSZ is the root-mean-square of all Z scores of the bond lengths (or angles).

Mol	Type	Chain	Res	Link	Bond lengths			Bond angles		
					Counts	RMSZ	$\# Z  > 2$	Counts	RMSZ	$\# Z  > 2$
2	4LU	A	601	3,4	35,39,39	2.24	10 (28%)	46,62,62	2.65	16 (34%)

In the following table, the Chirals column lists the number of chiral outliers, the number of chiral centers analysed, the number of these observed in the model and the number defined in the Chemical Component Dictionary. Similar counts are reported in the Torsion and Rings columns. '-' means no outliers of that kind were identified.

Mol	Type	Chain	Res	Link	Chirals	Torsions	Rings
2	4LU	A	601	3,4	-	2/18/30/30	0/4/4/4

All (10) bond length outliers are listed below:

Mol	Chain	Res	Type	Atoms	Z	Observed(Å)	Ideal(Å)
2	A	601	4LU	C5A-C6	6.59	1.45	1.39
2	A	601	4LU	C3-C5	-5.61	1.45	1.54
2	A	601	4LU	C1'-C2'	3.82	1.58	1.52
2	A	601	4LU	C4-N3	3.28	1.44	1.38
2	A	601	4LU	C4A-C4	-2.99	1.34	1.43
2	A	601	4LU	C9A-N10	2.86	1.46	1.41
2	A	601	4LU	O2-C2	2.65	1.28	1.23
2	A	601	4LU	C9-C8	2.64	1.43	1.39
2	A	601	4LU	C2'-C3'	-2.22	1.49	1.53
2	A	601	4LU	C10-N10	-2.21	1.34	1.38

All (16) bond angle outliers are listed below:

Mol	Chain	Res	Type	Atoms	Z	Observed(°)	Ideal(°)
2	A	601	4LU	C4-C4A-C10	9.82	128.97	121.08
2	A	601	4LU	C4A-C10-N10	7.89	126.29	119.02
2	A	601	4LU	C5-C6-C5A	-5.10	115.91	121.48
2	A	601	4LU	O4-C4-N3	-4.10	112.25	120.12
2	A	601	4LU	N1-C2-N3	3.81	121.93	115.80
2	A	601	4LU	O4-C4-C4A	3.63	136.24	128.06
2	A	601	4LU	C4-N3-C2	-3.56	121.21	126.34
2	A	601	4LU	C9-C9A-N10	-3.12	117.62	121.84
2	A	601	4LU	O2-C2-N3	-2.69	116.75	121.82
2	A	601	4LU	C9-C8-C7	2.50	121.93	119.18
2	A	601	4LU	C3-C5-C6	2.40	112.86	107.38
2	A	601	4LU	C13-C5-C6	-2.10	105.72	112.13
2	A	601	4LU	C8M-C8-C9	-2.08	115.65	119.49
2	A	601	4LU	C5A-C6-C7	-2.03	114.62	117.99
2	A	601	4LU	C12-C5-C6	2.01	118.27	112.13
2	A	601	4LU	C13-C5-C3	-2.01	106.12	109.60

There are no chirality outliers.

All (2) torsion outliers are listed below:

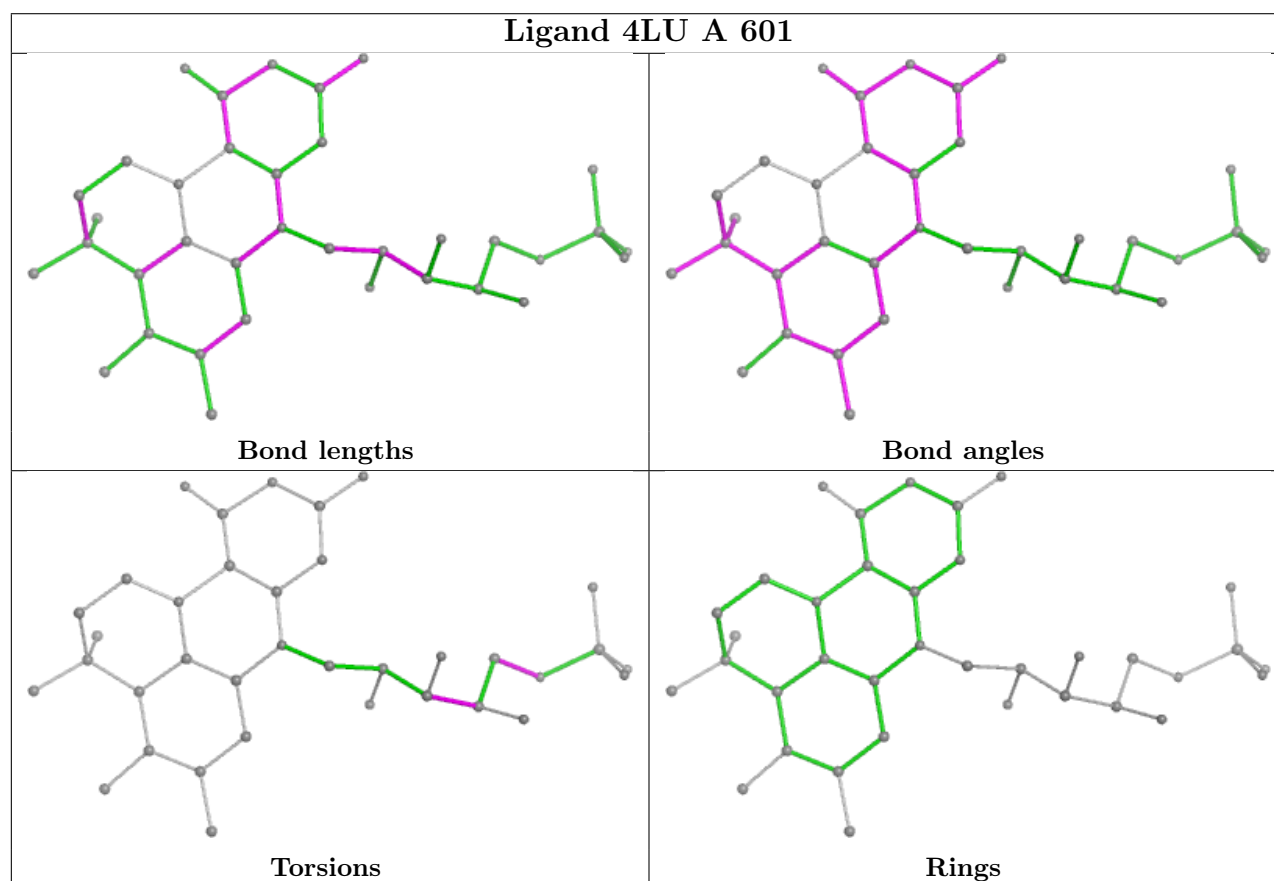
Mol	Chain	Res	Type	Atoms
2	A	601	4LU	C2'-C3'-C4'-C5'
2	A	601	4LU	C4'-C5'-O5'-P

There are no ring outliers.

1 monomer is involved in 2 short contacts:

Mol	Chain	Res	Type	Clashes	Symm-Clashes
2	A	601	4LU	2	0

The following is a two-dimensional graphical depiction of Mogul quality analysis of bond lengths, bond angles, torsion angles, and ring geometry for all instances of the Ligand of Interest. In addition, ligands with molecular weight > 250 and outliers as shown on the validation Tables will also be included. For torsion angles, if less than 5% of the Mogul distribution of torsion angles is within 10 degrees of the torsion angle in question, then that torsion angle is considered an outlier. Any bond that is central to one or more torsion angles identified as an outlier by Mogul will be highlighted in the graph. For rings, the root-mean-square deviation (RMSD) between the ring in question and similar rings identified by Mogul is calculated over all ring torsion angles. If the average RMSD is greater than 60 degrees and the minimal RMSD between the ring in question and any Mogul-identified rings is also greater than 60 degrees, then that ring is considered an outlier. The outliers are highlighted in purple. The color gray indicates Mogul did not find sufficient equivalents in the CSD to analyse the geometry.



## 5.7 Other polymers ⓘ

There are no such residues in this entry.

## 5.8 Polymer linkage issues

There are no chain breaks in this entry.

## 6 Fit of model and data [i](#)

### 6.1 Protein, DNA and RNA chains [i](#)

In the following table, the column labelled ‘#RSRZ > 2’ contains the number (and percentage) of RSRZ outliers, followed by percent RSRZ outliers for the chain as percentile scores relative to all X-ray entries and entries of similar resolution. The OWAB column contains the minimum, median, 95<sup>th</sup> percentile and maximum values of the occupancy-weighted average B-factor per residue. The column labelled ‘Q < 0.9’ lists the number of (and percentage) of residues with an average occupancy less than 0.9.

Mol	Chain	Analysed	<RSRZ>	#RSRZ>2	OWAB(Å <sup>2</sup> )	Q<0.9
1	A	500/508 (98%)	0.01	11 (2%) 62 59	7, 10, 20, 31	0

All (11) RSRZ outliers are listed below:

Mol	Chain	Res	Type	RSRZ
1	A	502	HIS	6.7
1	A	503	HIS	6.2
1	A	505	HIS	6.0
1	A	504	HIS	4.2
1	A	108[A]	ASP	3.5
1	A	130	SER	2.6
1	A	294	LEU	2.3
1	A	220	ILE	2.2
1	A	61	ASN	2.2
1	A	154	TYR	2.1
1	A	129[A]	ASP	2.1

### 6.2 Non-standard residues in protein, DNA, RNA chains [i](#)

There are no non-standard protein/DNA/RNA residues in this entry.

### 6.3 Carbohydrates [i](#)

There are no monosaccharides in this entry.

### 6.4 Ligands [i](#)

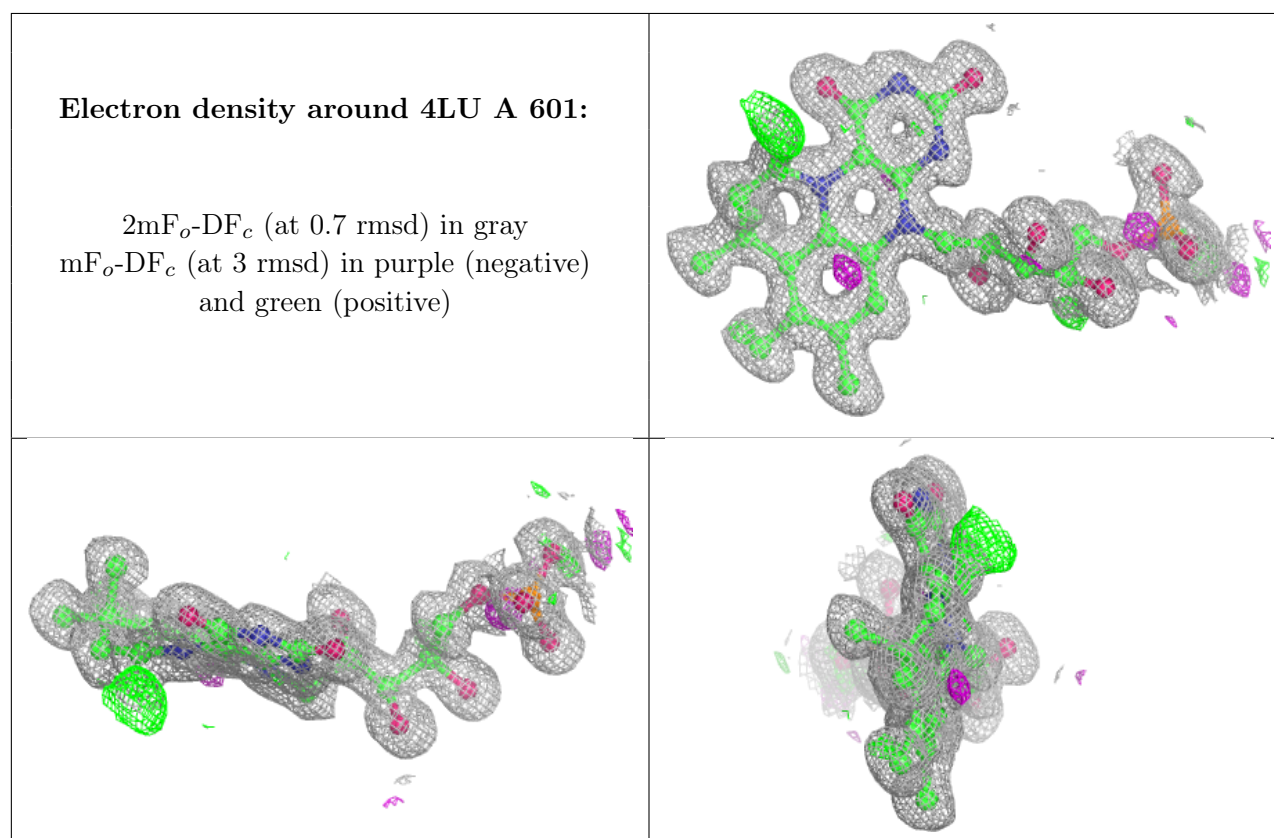
In the following table, the Atoms column lists the number of modelled atoms in the group and the number defined in the chemical component dictionary. The B-factors column lists the minimum,



median, 95<sup>th</sup> percentile and maximum values of B factors of atoms in the group. The column labelled 'Q<0.9' lists the number of atoms with occupancy less than 0.9.

Mol	Type	Chain	Res	Atoms	RSCC	RSR	B-factors(Å <sup>2</sup> )	Q<0.9
2	4LU	A	601	36/36	0.98	0.10	6,7,11,13	0
3	MN	A	602	1/1	1.00	0.07	7,7,7,7	0
4	K	A	603	1/1	1.00	0.07	7,7,7,7	0
4	K	A	604	1/1	1.00	0.05	8,8,8,8	0

The following is a graphical depiction of the model fit to experimental electron density of all instances of the Ligand of Interest. In addition, ligands with molecular weight > 250 and outliers as shown on the geometry validation Tables will also be included. Each fit is shown from different orientation to approximate a three-dimensional view.



## 6.5 Other polymers ⓘ

There are no such residues in this entry.