



Full wwPDB X-ray Structure Validation Report ⓘ

Jun 26, 2024 – 12:52 AM EDT

PDB ID : 6YMO
Title : Binary complex of 14-3-3 zeta with Glucocorticoid Receptor (GR) pS617 peptide
Authors : Munier, C.C.; Edman, K.; Perry, M.W.D.; Ottmann, C.
Deposited on : 2020-04-09
Resolution : 2.02 Å(reported)

This is a Full wwPDB X-ray Structure Validation Report for a publicly released PDB entry.

We welcome your comments at validation@mail.wwpdb.org

A user guide is available at

<https://www.wwpdb.org/validation/2017/XrayValidationReportHelp>

with specific help available everywhere you see the ⓘ symbol.

The types of validation reports are described at

<http://www.wwpdb.org/validation/2017/FAQs#types>.

The following versions of software and data (see [references ⓘ](#)) were used in the production of this report:

MolProbity : 4.02b-467
Mogul : 1.8.5 (274361), CSD as541be (2020)
Xtriage (Phenix) : 1.13
EDS : 2.37.1
Percentile statistics : 20191225.v01 (using entries in the PDB archive December 25th 2019)
Refmac : 5.8.0158
CCP4 : 7.0.044 (Gargrove)
Ideal geometry (proteins) : Engh & Huber (2001)
Ideal geometry (DNA, RNA) : Parkinson et al. (1996)
Validation Pipeline (wwPDB-VP) : 2.37.1

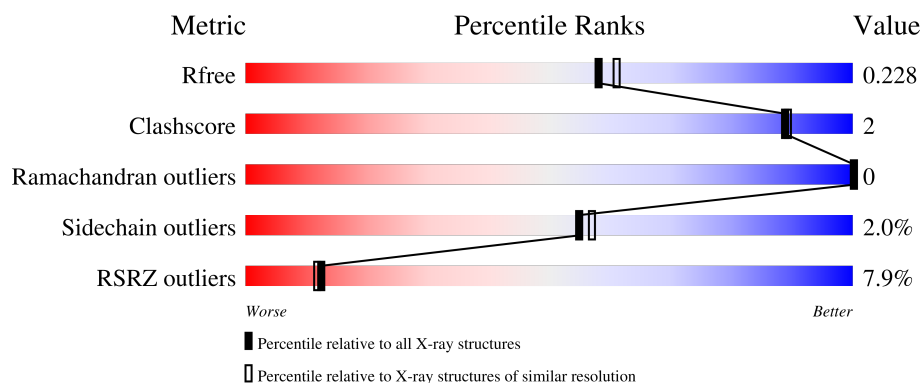
1 Overall quality at a glance

The following experimental techniques were used to determine the structure:

X-RAY DIFFRACTION

The reported resolution of this entry is 2.02 Å.

Percentile scores (ranging between 0-100) for global validation metrics of the entry are shown in the following graphic. The table shows the number of entries on which the scores are based.



Metric	Whole archive (#Entries)	Similar resolution (#Entries, resolution range(Å))
R_{free}	130704	10434 (2.04-2.00)
Clashscore	141614	11643 (2.04-2.00)
Ramachandran outliers	138981	11493 (2.04-2.00)
Sidechain outliers	138945	11492 (2.04-2.00)
RSRZ outliers	127900	10220 (2.04-2.00)

The table below summarises the geometric issues observed across the polymeric chains and their fit to the electron density. The red, orange, yellow and green segments of the lower bar indicate the fraction of residues that contain outliers for ≥ 3 , 2, 1 and 0 types of geometric quality criteria respectively. A grey segment represents the fraction of residues that are not modelled. The numeric value for each fraction is indicated below the corresponding segment, with a dot representing fractions $\leq 5\%$. The upper red bar (where present) indicates the fraction of residues that have poor fit to the electron density. The numeric value is given above the bar.

Mol	Chain	Length	Quality of chain
1	A	235	<div> <div>7%</div> <div>92%</div> <div>6%</div> </div>
1	B	235	<div> <div>5%</div> <div>93%</div> <div>5%</div> </div>
2	C	13	<div> <div>31%</div> <div>15%</div> <div>23%</div> <div>62%</div> </div>
2	D	13	<div> <div>38%</div> <div>15%</div> <div>23%</div> <div>8%</div> <div>54%</div> </div>

2 Entry composition [i](#)

There are 5 unique types of molecules in this entry. The entry contains 4030 atoms, of which 0 are hydrogens and 0 are deuteriums.

In the tables below, the ZeroOcc column contains the number of atoms modelled with zero occupancy, the AltConf column contains the number of residues with at least one atom in alternate conformation and the Trace column contains the number of residues modelled with at most 2 atoms.

- Molecule 1 is a protein called 14-3-3 protein zeta/delta.

Mol	Chain	Residues	Atoms					ZeroOcc	AltConf	Trace
1	A	230	Total	C	N	O	S	0	0	0
			1843	1154	309	370	10			
1	B	230	Total	C	N	O	S	0	0	0
			1843	1154	309	370	10			

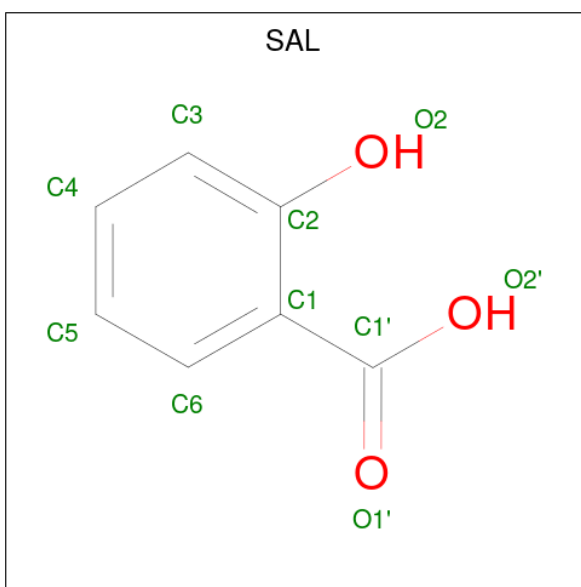
There are 10 discrepancies between the modelled and reference sequences:

Chain	Residue	Modelled	Actual	Comment	Reference
A	-4	GLY	-	expression tag	UNP P63104
A	-3	ALA	-	expression tag	UNP P63104
A	-2	MET	-	expression tag	UNP P63104
A	-1	GLY	-	expression tag	UNP P63104
A	0	SER	-	expression tag	UNP P63104
B	-4	GLY	-	expression tag	UNP P63104
B	-3	ALA	-	expression tag	UNP P63104
B	-2	MET	-	expression tag	UNP P63104
B	-1	GLY	-	expression tag	UNP P63104
B	0	SER	-	expression tag	UNP P63104

- Molecule 2 is a protein called Glucocorticoid receptor.

Mol	Chain	Residues	Atoms					ZeroOcc	AltConf	Trace
2	C	5	Total	C	N	O	P	0	0	0
			37	19	6	11	1			
2	D	6	Total	C	N	O	P	0	0	0
			46	24	8	13	1			

- Molecule 3 is 2-HYDROXYBENZOIC ACID (three-letter code: SAL) (formula: C₇H₆O₃).



Mol	Chain	Residues	Atoms			ZeroOcc	AltConf
3	A	1	Total	C	O	0	1
			20	14	6		

- Molecule 4 is SULFATE ION (three-letter code: SO₄) (formula: O₄S).



Mol	Chain	Residues	Atoms			ZeroOcc	AltConf
4	A	1	Total	O	S	0	0
			5	4	1		

- Molecule 5 is water.

Mol	Chain	Residues	Atoms		ZeroOcc	AltConf
5	A	107	Total 107	O 107	0	0
5	B	125	Total 125	O 125	0	0
5	C	4	Total 4	O 4	0	0

3 Residue-property plots [i](#)

These plots are drawn for all protein, RNA, DNA and oligosaccharide chains in the entry. The first graphic for a chain summarises the proportions of the various outlier classes displayed in the second graphic. The second graphic shows the sequence view annotated by issues in geometry and electron density. Residues are color-coded according to the number of geometric quality criteria for which they contain at least one outlier: green = 0, yellow = 1, orange = 2 and red = 3 or more. A red dot above a residue indicates a poor fit to the electron density ($RSRZ > 2$). Stretches of 2 or more consecutive residues without any outlier are shown as a green connector. Residues present in the sample, but not in the model, are shown in grey.

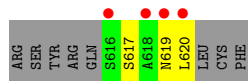
- Molecule 1: 14-3-3 protein zeta/delta



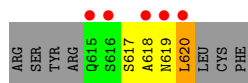
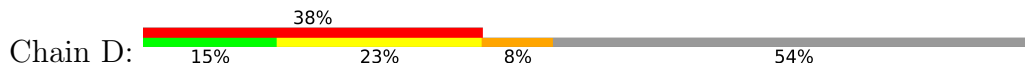
- Molecule 1: 14-3-3 protein zeta/delta



- Molecule 2: Glucocorticoid receptor



- Molecule 2: Glucocorticoid receptor



4 Data and refinement statistics

Property	Value	Source
Space group	P 21 21 21	Depositor
Cell constants a, b, c, α , β , γ	72.28Å 104.35Å 112.43Å 90.00° 90.00° 90.00°	Depositor
Resolution (Å)	47.33 – 2.02 47.33 – 2.02	Depositor EDS
% Data completeness (in resolution range)	99.9 (47.33-2.02) 99.9 (47.33-2.02)	Depositor EDS
R_{merge}	0.08	Depositor
R_{sym}	(Not available)	Depositor
$\langle I/\sigma(I) \rangle$ ¹	0.99 (at 2.01Å)	Xtriage
Refinement program	BUSTER 2.11.7	Depositor
R, R_{free}	0.212 , 0.234 0.212 , 0.228	Depositor DCC
R_{free} test set	2098 reflections (3.71%)	wwPDB-VP
Wilson B-factor (Å ²)	50.4	Xtriage
Anisotropy	0.277	Xtriage
Bulk solvent k_{sol} (e/Å ³), B_{sol} (Å ²)	0.37 , 57.5	EDS
L-test for twinning ²	$\langle L \rangle = 0.50$, $\langle L^2 \rangle = 0.33$	Xtriage
Estimated twinning fraction	No twinning to report.	Xtriage
F_o, F_c correlation	0.97	EDS
Total number of atoms	4030	wwPDB-VP
Average B, all atoms (Å ²)	63.0	wwPDB-VP

Xtriage's analysis on translational NCS is as follows: *The largest off-origin peak in the Patterson function is 7.28% of the height of the origin peak. No significant pseudotranslation is detected.*

¹Intensities estimated from amplitudes.

²Theoretical values of $\langle |L| \rangle$, $\langle L^2 \rangle$ for acentric reflections are 0.5, 0.333 respectively for untwinned datasets, and 0.375, 0.2 for perfectly twinned datasets.

5 Model quality [i](#)

5.1 Standard geometry [i](#)

Bond lengths and bond angles in the following residue types are not validated in this section: SEP, SAL, SO4

The Z score for a bond length (or angle) is the number of standard deviations the observed value is removed from the expected value. A bond length (or angle) with $|Z| > 5$ is considered an outlier worth inspection. RMSZ is the root-mean-square of all Z scores of the bond lengths (or angles).

Mol	Chain	Bond lengths		Bond angles	
		RMSZ	$\# Z > 5$	RMSZ	$\# Z > 5$
1	A	0.47	0/1868	0.60	0/2510
1	B	0.50	0/1868	0.58	0/2510
2	C	0.45	0/25	0.71	0/31
2	D	0.65	0/34	1.34	1/43 (2.3%)
All	All	0.49	0/3795	0.60	1/5094 (0.0%)

There are no bond length outliers.

All (1) bond angle outliers are listed below:

Mol	Chain	Res	Type	Atoms	Z	Observed(°)	Ideal(°)
2	D	618	ALA	C-N-CA	5.16	134.59	121.70

There are no chirality outliers.

There are no planarity outliers.

5.2 Too-close contacts [i](#)

In the following table, the Non-H and H(model) columns list the number of non-hydrogen atoms and hydrogen atoms in the chain respectively. The H(added) column lists the number of hydrogen atoms added and optimized by MolProbity. The Clashes column lists the number of clashes within the asymmetric unit, whereas Symm-Clashes lists symmetry-related clashes.

Mol	Chain	Non-H	H(model)	H(added)	Clashes	Symm-Clashes
1	A	1843	0	1833	8	0
1	B	1843	0	1833	6	0
2	C	37	0	29	2	0
2	D	46	0	37	3	0
3	A	20	0	9	0	0
4	A	5	0	0	0	0

Continued on next page...

Continued from previous page...

Mol	Chain	Non-H	H(model)	H(added)	Clashes	Symm-Clashes
5	A	107	0	0	0	0
5	B	125	0	0	1	0
5	C	4	0	0	0	0
All	All	4030	0	3741	14	0

The all-atom clashscore is defined as the number of clashes found per 1000 atoms (including hydrogen atoms). The all-atom clashscore for this structure is 2.

All (14) close contacts within the same asymmetric unit are listed below, sorted by their clash magnitude.

Atom-1	Atom-2	Interatomic distance (Å)	Clash overlap (Å)
1:B:125:TYR:HE1	2:D:620:LEU:HD11	1.69	0.57
1:A:136:ASP:OD1	1:A:137:ASP:N	2.40	0.54
1:B:49:LYS:HD2	2:D:619:ASN:HB3	1.91	0.52
1:A:220:LEU:HD11	2:C:619:ASN:HB2	1.94	0.49
1:A:69:THR:HG22	1:A:69:THR:O	2.11	0.49
1:B:102:GLU:HG2	5:B:310:HOH:O	2.14	0.47
1:A:49:LYS:HG2	2:C:620:LEU:HD11	1.96	0.47
1:A:1:MET:HB3	1:A:6:LEU:HG	1.98	0.46
1:B:49:LYS:HG3	2:D:620:LEU:HD23	2.00	0.44
1:B:87:GLU:O	1:B:91:ARG:HG3	2.19	0.42
1:A:2:ASP:HB3	1:A:5:GLU:HB2	2.01	0.42
1:B:41:ARG:HG3	1:B:118:TYR:OH	2.19	0.42
1:A:41:ARG:HG2	1:A:117:PHE:CE1	2.55	0.41
1:A:101:LEU:HA	1:A:105:LEU:HB2	2.03	0.41

There are no symmetry-related clashes.

5.3 Torsion angles ⓘ

5.3.1 Protein backbone ⓘ

In the following table, the Percentiles column shows the percent Ramachandran outliers of the chain as a percentile score with respect to all X-ray entries followed by that with respect to entries of similar resolution.

The Analysed column shows the number of residues for which the backbone conformation was analysed, and the total number of residues.

Mol	Chain	Analysed	Favoured	Allowed	Outliers	Percentiles	
1	A	228/235 (97%)	226 (99%)	2 (1%)	0	100	100
1	B	228/235 (97%)	226 (99%)	2 (1%)	0	100	100
2	C	2/13 (15%)	2 (100%)	0	0	100	100
2	D	3/13 (23%)	3 (100%)	0	0	100	100
All	All	461/496 (93%)	457 (99%)	4 (1%)	0	100	100

There are no Ramachandran outliers to report.

5.3.2 Protein sidechains ⓘ

In the following table, the Percentiles column shows the percent sidechain outliers of the chain as a percentile score with respect to all X-ray entries followed by that with respect to entries of similar resolution.

The Analysed column shows the number of residues for which the sidechain conformation was analysed, and the total number of residues.

Mol	Chain	Analysed	Rotameric	Outliers	Percentiles	
1	A	200/202 (99%)	198 (99%)	2 (1%)	76	80
1	B	200/202 (99%)	195 (98%)	5 (2%)	47	48
2	C	3/11 (27%)	3 (100%)	0	100	100
2	D	4/11 (36%)	3 (75%)	1 (25%)	0	0
All	All	407/426 (96%)	399 (98%)	8 (2%)	55	57

All (8) residues with a non-rotameric sidechain are listed below:

Mol	Chain	Res	Type
1	A	1	MET
1	A	174	PHE
1	B	136	ASP
1	B	143	ASP
1	B	174	PHE
1	B	204	ASP
1	B	211	TYR
2	D	620	LEU

Sometimes sidechains can be flipped to improve hydrogen bonding and reduce clashes. All (1) such sidechains are listed below:

Mol	Chain	Res	Type
1	B	161	GLN

5.3.3 RNA ⓘ

There are no RNA molecules in this entry.

5.4 Non-standard residues in protein, DNA, RNA chains ⓘ

2 non-standard protein/DNA/RNA residues are modelled in this entry.

In the following table, the Counts columns list the number of bonds (or angles) for which Mogul statistics could be retrieved, the number of bonds (or angles) that are observed in the model and the number of bonds (or angles) that are defined in the Chemical Component Dictionary. The Link column lists molecule types, if any, to which the group is linked. The Z score for a bond length (or angle) is the number of standard deviations the observed value is removed from the expected value. A bond length (or angle) with $|Z| > 2$ is considered an outlier worth inspection. RMSZ is the root-mean-square of all Z scores of the bond lengths (or angles).

Mol	Type	Chain	Res	Link	Bond lengths			Bond angles		
					Counts	RMSZ	$\# Z > 2$	Counts	RMSZ	$\# Z > 2$
2	SEP	C	617	2	8,9,10	1.40	1 (12%)	8,12,14	1.62	2 (25%)
2	SEP	D	617	2	8,9,10	1.20	1 (12%)	8,12,14	1.66	3 (37%)

In the following table, the Chirals column lists the number of chiral outliers, the number of chiral centers analysed, the number of these observed in the model and the number defined in the Chemical Component Dictionary. Similar counts are reported in the Torsion and Rings columns. '-' means no outliers of that kind were identified.

Mol	Type	Chain	Res	Link	Chirals	Torsions	Rings
2	SEP	C	617	2	-	0/5/8/10	-
2	SEP	D	617	2	-	0/5/8/10	-

All (2) bond length outliers are listed below:

Mol	Chain	Res	Type	Atoms	Z	Observed(Å)	Ideal(Å)
2	C	617	SEP	P-OG	-3.23	1.49	1.60
2	D	617	SEP	P-OG	-2.08	1.53	1.60

All (5) bond angle outliers are listed below:

Mol	Chain	Res	Type	Atoms	Z	Observed(°)	Ideal(°)
2	D	617	SEP	OG-P-O1P	2.86	114.48	106.47

Continued on next page...

Continued from previous page...

Mol	Chain	Res	Type	Atoms	Z	Observed(°)	Ideal(°)
2	C	617	SEP	O3P-P-O1P	2.48	120.39	110.68
2	D	617	SEP	O3P-P-O1P	-2.41	101.23	110.68
2	D	617	SEP	O2P-P-O1P	2.26	119.53	110.68
2	C	617	SEP	O2P-P-OG	2.23	112.66	106.73

There are no chirality outliers.

There are no torsion outliers.

There are no ring outliers.

No monomer is involved in short contacts.

5.5 Carbohydrates [i](#)

There are no monosaccharides in this entry.

5.6 Ligand geometry [i](#)

3 ligands are modelled in this entry.

In the following table, the Counts columns list the number of bonds (or angles) for which Mogul statistics could be retrieved, the number of bonds (or angles) that are observed in the model and the number of bonds (or angles) that are defined in the Chemical Component Dictionary. The Link column lists molecule types, if any, to which the group is linked. The Z score for a bond length (or angle) is the number of standard deviations the observed value is removed from the expected value. A bond length (or angle) with $|Z| > 2$ is considered an outlier worth inspection. RMSZ is the root-mean-square of all Z scores of the bond lengths (or angles).

Mol	Type	Chain	Res	Link	Bond lengths			Bond angles		
					Counts	RMSZ	$\# Z > 2$	Counts	RMSZ	$\# Z > 2$
3	SAL	A	301[A]	-	10,10,10	2.13	1 (10%)	13,13,13	0.75	0
3	SAL	A	301[B]	-	10,10,10	2.13	1 (10%)	13,13,13	0.81	0
4	SO4	A	302	-	4,4,4	0.12	0	6,6,6	0.28	0

In the following table, the Chirals column lists the number of chiral outliers, the number of chiral centers analysed, the number of these observed in the model and the number defined in the Chemical Component Dictionary. Similar counts are reported in the Torsion and Rings columns. '-' means no outliers of that kind were identified.

Mol	Type	Chain	Res	Link	Chirals	Torsions	Rings
3	SAL	A	301[A]	-	-	2/4/4/4	0/1/1/1

Continued on next page...

Continued from previous page...

Mol	Type	Chain	Res	Link	Chirals	Torsions	Rings
3	SAL	A	301[B]	-	-	0/4/4/4	0/1/1/1

All (2) bond length outliers are listed below:

Mol	Chain	Res	Type	Atoms	Z	Observed(Å)	Ideal(Å)
3	A	301[B]	SAL	C1-C2	6.21	1.50	1.40
3	A	301[A]	SAL	C1-C2	6.18	1.50	1.40

There are no bond angle outliers.

There are no chirality outliers.

All (2) torsion outliers are listed below:

Mol	Chain	Res	Type	Atoms
3	A	301[A]	SAL	C2-C1-C1'-O2'
3	A	301[A]	SAL	C2-C1-C1'-O1'

There are no ring outliers.

No monomer is involved in short contacts.

5.7 Other polymers [i](#)

There are no such residues in this entry.

5.8 Polymer linkage issues [i](#)

There are no chain breaks in this entry.

6 Fit of model and data ⓘ

6.1 Protein, DNA and RNA chains ⓘ

In the following table, the column labelled ‘#RSRZ> 2’ contains the number (and percentage) of RSRZ outliers, followed by percent RSRZ outliers for the chain as percentile scores relative to all X-ray entries and entries of similar resolution. The OWAB column contains the minimum, median, 95th percentile and maximum values of the occupancy-weighted average B-factor per residue. The column labelled ‘Q< 0.9’ lists the number of (and percentage) of residues with an average occupancy less than 0.9.

Mol	Chain	Analysed	<RSRZ>	#RSRZ>2	OWAB(Å ²)	Q<0.9
1	A	230/235 (97%)	0.64	17 (7%) 14 14	46, 59, 97, 113	0
1	B	230/235 (97%)	0.52	11 (4%) 30 30	44, 56, 87, 110	0
2	C	4/13 (30%)	3.53	4 (100%) 0 0	84, 92, 111, 130	0
2	D	5/13 (38%)	5.06	5 (100%) 0 0	83, 89, 101, 110	0
All	All	469/496 (94%)	0.65	37 (7%) 12 12	44, 58, 94, 130	0

All (37) RSRZ outliers are listed below:

Mol	Chain	Res	Type	RSRZ
2	D	620	LEU	7.5
1	A	230	SER	6.6
2	C	620	LEU	6.2
1	A	1	MET	5.6
2	D	616	SER	5.4
2	D	615	GLN	5.3
1	A	205	THR	4.9
2	D	619	ASN	4.8
1	B	230	SER	4.7
1	B	67	GLN	4.6
1	A	70	GLU	4.4
1	A	71	GLY	4.1
1	A	73	GLU	4.1
1	A	204	ASP	4.0
1	A	203	LEU	3.6
1	A	136	ASP	3.5
1	B	208	GLU	3.3
1	A	209	GLU	3.3
2	C	616	SER	3.1
1	B	203	LEU	3.1
1	B	209	GLU	2.9

Continued on next page...

Continued from previous page...

Mol	Chain	Res	Type	RSRZ
1	A	208	GLU	2.9
1	A	67	GLN	2.9
2	C	619	ASN	2.7
1	A	46	VAL	2.6
1	A	229	THR	2.6
1	B	206	LEU	2.4
1	B	134	ALA	2.4
2	D	618	ALA	2.3
1	A	69	THR	2.3
1	A	72	ALA	2.2
1	B	211	TYR	2.2
1	B	137	ASP	2.2
1	B	78	MET	2.1
1	B	205	THR	2.0
2	C	618	ALA	2.0
1	A	68	LYS	2.0

6.2 Non-standard residues in protein, DNA, RNA chains [i](#)

In the following table, the Atoms column lists the number of modelled atoms in the group and the number defined in the chemical component dictionary. The B-factors column lists the minimum, median, 95th percentile and maximum values of B factors of atoms in the group. The column labelled 'Q< 0.9' lists the number of atoms with occupancy less than 0.9.

Mol	Type	Chain	Res	Atoms	RSCC	RSR	B-factors(Å ²)	Q<0.9
2	SEP	D	617	10/11	0.92	0.22	58,65,80,80	0
2	SEP	C	617	10/11	0.93	0.23	62,69,87,87	0

6.3 Carbohydrates [i](#)

There are no monosaccharides in this entry.

6.4 Ligands [i](#)

In the following table, the Atoms column lists the number of modelled atoms in the group and the number defined in the chemical component dictionary. The B-factors column lists the minimum, median, 95th percentile and maximum values of B factors of atoms in the group. The column labelled 'Q< 0.9' lists the number of atoms with occupancy less than 0.9.

Mol	Type	Chain	Res	Atoms	RSCC	RSR	B-factors(\AA^2)	Q<0.9
4	SO4	A	302	5/5	0.97	0.15	77,78,79,81	0
3	SAL	A	301[B]	10/10	0.98	0.20	51,53,53,54	10
3	SAL	A	301[A]	10/10	0.98	0.20	54,56,56,56	10

6.5 Other polymers [i](#)

There are no such residues in this entry.