



# wwPDB X-ray Structure Validation Summary Report ⓘ

Oct 6, 2024 – 09:40 am BST

PDB ID : 2YHG  
Title : Ab initio phasing of a nucleoside hydrolase-related hypothetical protein from Saccharophagus degradans that is associated with carbohydrate metabolism  
Authors : Hehemann, J.H.; Marsters, C.; Boraston, A.B.  
Deposited on : 2011-04-30  
Resolution : 1.08 Å(reported)

This is a wwPDB X-ray Structure Validation Summary Report for a publicly released PDB entry.

We welcome your comments at [validation@mail.wwpdb.org](mailto:validation@mail.wwpdb.org)

A user guide is available at

<https://www.wwpdb.org/validation/2017/XrayValidationReportHelp>

with specific help available everywhere you see the ⓘ symbol.

The types of validation reports are described at

<http://www.wwpdb.org/validation/2017/FAQs#types>.

---

The following versions of software and data (see [references ⓘ](#)) were used in the production of this report:

MolProbity	:	4.02b-467
Mogul	:	1.8.4, CSD as541be (2020)
Xtriage (Phenix)	:	1.13
EDS	:	3.0
Percentile statistics	:	20231227.v01 (using entries in the PDB archive December 27th 2023)
CCP4	:	9.0.003 (Gargrove)
Density-Fitness	:	1.0.11
Ideal geometry (proteins)	:	Engh & Huber (2001)
Ideal geometry (DNA, RNA)	:	Parkinson et al. (1996)
Validation Pipeline (wwPDB-VP)	:	2.39

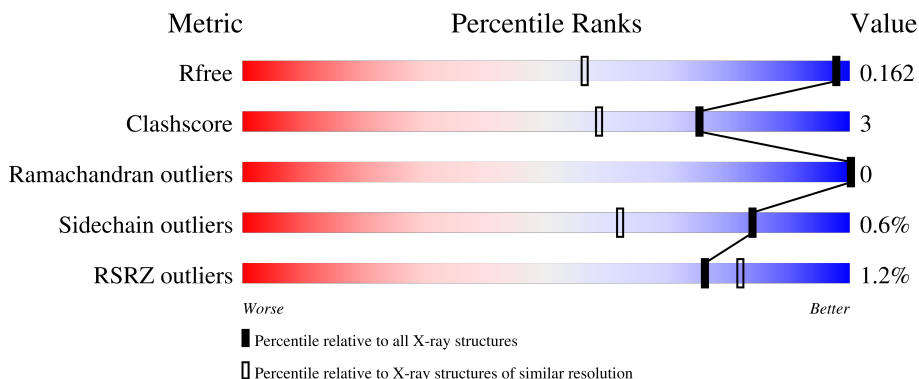
# 1 Overall quality at a glance

The following experimental techniques were used to determine the structure:

## *X-RAY DIFFRACTION*


The reported resolution of this entry is 1.08 Å.

Percentile scores (ranging between 0-100) for global validation metrics of the entry are shown in the following graphic. The table shows the number of entries on which the scores are based.



Metric	Whole archive (#Entries)	Similar resolution (#Entries, resolution range(Å))
$R_{free}$	164625	1502 (1.10-1.06)
Clashscore	180529	1658 (1.10-1.06)
Ramachandran outliers	177936	1614 (1.10-1.06)
Sidechain outliers	177891	1611 (1.10-1.06)
RSRZ outliers	164620	1502 (1.10-1.06)

The table below summarises the geometric issues observed across the polymeric chains and their fit to the electron density. The red, orange, yellow and green segments of the lower bar indicate the fraction of residues that contain outliers for  $\geq 3$ , 2, 1 and 0 types of geometric quality criteria respectively. A grey segment represents the fraction of residues that are not modelled. The numeric value for each fraction is indicated below the corresponding segment, with a dot representing fractions  $\leq 5\%$ . The upper red bar (where present) indicates the fraction of residues that have poor fit to the electron density. The numeric value is given above the bar.

Mol	Chain	Length	Quality of chain
1	A	437	

## 2 Entry composition

There are 8 unique types of molecules in this entry. The entry contains 3729 atoms, of which 0 are hydrogens and 0 are deuteriums.

In the tables below, the ZeroOcc column contains the number of atoms modelled with zero occupancy, the AltConf column contains the number of residues with at least one atom in alternate conformation and the Trace column contains the number of residues modelled with at most 2 atoms.

- Molecule 1 is a protein called CELLULOSE-BINDING PROTEIN.

Mol	Chain	Residues	Atoms					ZeroOcc	AltConf	Trace
1	A	411	Total	C	N	O	S	5	26	0
			3267	2041	568	643	15			

There are 23 discrepancies between the modelled and reference sequences:

Chain	Residue	Modelled	Actual	Comment	Reference
A	497	MET	-	expression tag	UNP Q21PD3
A	498	GLY	-	expression tag	UNP Q21PD3
A	499	SER	-	expression tag	UNP Q21PD3
A	500	SER	-	expression tag	UNP Q21PD3
A	501	HIS	-	expression tag	UNP Q21PD3
A	502	HIS	-	expression tag	UNP Q21PD3
A	503	HIS	-	expression tag	UNP Q21PD3
A	504	HIS	-	expression tag	UNP Q21PD3
A	505	HIS	-	expression tag	UNP Q21PD3
A	506	HIS	-	expression tag	UNP Q21PD3
A	507	SER	-	expression tag	UNP Q21PD3
A	508	SER	-	expression tag	UNP Q21PD3
A	509	GLY	-	expression tag	UNP Q21PD3
A	510	LEU	-	expression tag	UNP Q21PD3
A	511	VAL	-	expression tag	UNP Q21PD3
A	512	PRO	-	expression tag	UNP Q21PD3
A	513	ARG	-	expression tag	UNP Q21PD3
A	514	GLY	-	expression tag	UNP Q21PD3
A	515	SER	-	expression tag	UNP Q21PD3
A	516	HIS	-	expression tag	UNP Q21PD3
A	517	MET	-	expression tag	UNP Q21PD3
A	518	ALA	-	expression tag	UNP Q21PD3
A	519	ARG	-	expression tag	UNP Q21PD3

- Molecule 2 is CALCIUM ION (three-letter code: CA) (formula: Ca).

Mol	Chain	Residues	Atoms	ZeroOcc	AltConf
2	A	2	Total Ca 2 2	0	0

- Molecule 3 is CHLORIDE ION (three-letter code: CL) (formula: Cl).

Mol	Chain	Residues	Atoms	ZeroOcc	AltConf
3	A	2	Total Cl 2 2	0	0

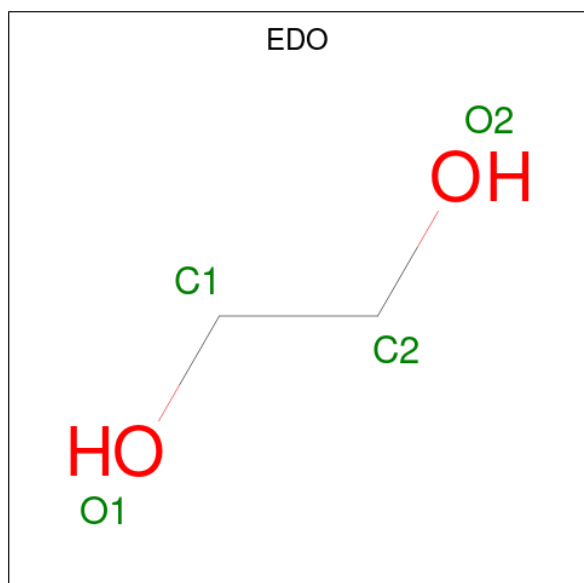
- Molecule 4 is MAGNESIUM ION (three-letter code: MG) (formula: Mg).

Mol	Chain	Residues	Atoms	ZeroOcc	AltConf
4	A	3	Total Mg 3 3	0	0

- Molecule 5 is ZINC ION (three-letter code: ZN) (formula: Zn).

Mol	Chain	Residues	Atoms	ZeroOcc	AltConf
5	A	1	Total Zn 1 1	0	0

- Molecule 6 is 1,2-ETHANEDIOL (three-letter code: EDO) (formula: C<sub>2</sub>H<sub>6</sub>O<sub>2</sub>).



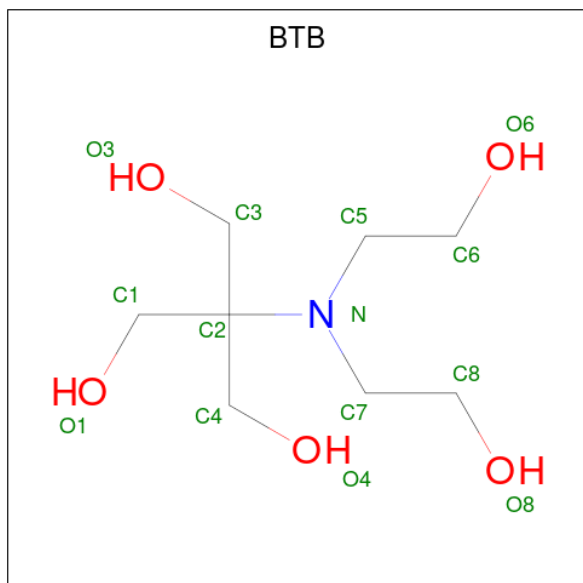
Mol	Chain	Residues	Atoms	ZeroOcc	AltConf
6	A	1	Total C O 4 2 2	0	0

*Continued on next page...*

Continued from previous page...

Mol	Chain	Residues	Atoms			ZeroOcc	AltConf
6	A	1	Total	C	O	0	0
			4	2	2		
6	A	1	Total	C	O	0	0
			4	2	2		

- Molecule 7 is 2-[BIS-(2-HYDROXY-ETHYL)-AMINO]-2-HYDROXYMETHYL-PROPAN E-1,3-DIOL (three-letter code: BTB) (formula:  $C_8H_{19}NO_5$ ).



Mol	Chain	Residues	Atoms				ZeroOcc	AltConf
7	A	1	Total	C	N	O	0	0
			14	8	1	5		

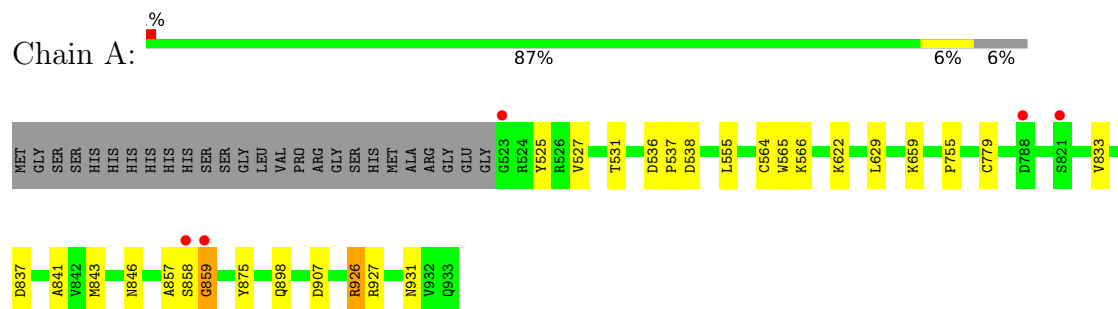
- Molecule 8 is water.

Mol	Chain	Residues	Atoms		ZeroOcc	AltConf
8	A	426	Total	O	0	2
			428	428		

### 3 Residue-property plots [i](#)

These plots are drawn for all protein, RNA, DNA and oligosaccharide chains in the entry. The first graphic for a chain summarises the proportions of the various outlier classes displayed in the second graphic. The second graphic shows the sequence view annotated by issues in geometry and electron density. Residues are color-coded according to the number of geometric quality criteria for which they contain at least one outlier: green = 0, yellow = 1, orange = 2 and red = 3 or more. A red dot above a residue indicates a poor fit to the electron density ( $RSRZ > 2$ ). Stretches of 2 or more consecutive residues without any outlier are shown as a green connector. Residues present in the sample, but not in the model, are shown in grey.

#### • Molecule 1: CELLULOSE-BINDING PROTEIN



## 4 Data and refinement statistics

Property	Value	Source
Space group	P 21 21 21	Depositor
Cell constants a, b, c, $\alpha$ , $\beta$ , $\gamma$	54.58Å 61.58Å 125.46Å 90.00° 90.00° 90.00°	Depositor
Resolution (Å)	62.73 – 1.08 62.73 – 1.08	Depositor EDS
% Data completeness (in resolution range)	95.9 (62.73-1.08) 95.9 (62.73-1.08)	Depositor EDS
$R_{merge}$	0.06	Depositor
$R_{sym}$	(Not available)	Depositor
$\langle I/\sigma(I) \rangle$ <sup>1</sup>	3.01 (at 1.08Å)	Xtriage
Refinement program	REFMAC 5.5.0102	Depositor
R, $R_{free}$	0.133 , 0.151 0.145 , 0.162	Depositor DCC
$R_{free}$ test set	8714 reflections (5.01%)	wwPDB-VP
Wilson B-factor (Å <sup>2</sup> )	9.3	Xtriage
Anisotropy	0.375	Xtriage
Bulk solvent $k_{sol}$ (e/Å <sup>3</sup> ), $B_{sol}$ (Å <sup>2</sup> )	0.35 , 39.1	EDS
L-test for twinning <sup>2</sup>	$\langle  L  \rangle = 0.49$ , $\langle L^2 \rangle = 0.33$	Xtriage
Estimated twinning fraction	No twinning to report.	Xtriage
$F_o, F_c$ correlation	0.97	EDS
Total number of atoms	3729	wwPDB-VP
Average B, all atoms (Å <sup>2</sup> )	12.0	wwPDB-VP

Xtriage's analysis on translational NCS is as follows: *The largest off-origin peak in the Patterson function is 5.59% of the height of the origin peak. No significant pseudotranslation is detected.*

<sup>1</sup>Intensities estimated from amplitudes.

<sup>2</sup>Theoretical values of  $\langle |L| \rangle$ ,  $\langle L^2 \rangle$  for acentric reflections are 0.5, 0.333 respectively for untwinned datasets, and 0.375, 0.2 for perfectly twinned datasets.

## 5 Model quality

### 5.1 Standard geometry

Bond lengths and bond angles in the following residue types are not validated in this section: MG, CA, CL, BTB, EDO, ZN

The Z score for a bond length (or angle) is the number of standard deviations the observed value is removed from the expected value. A bond length (or angle) with  $|Z| > 5$  is considered an outlier worth inspection. RMSZ is the root-mean-square of all Z scores of the bond lengths (or angles).

Mol	Chain	Bond lengths		Bond angles	
		RMSZ	$\# Z  > 5$	RMSZ	$\# Z  > 5$
1	A	0.63	2/3425 (0.1%)	0.77	6/4664 (0.1%)

Chiral center outliers are detected by calculating the chiral volume of a chiral center and verifying if the center is modelled as a planar moiety or with the opposite hand. A planarity outlier is detected by checking planarity of atoms in a peptide group, atoms in a mainchain group or atoms of a sidechain that are expected to be planar.

Mol	Chain	#Chirality outliers	#Planarity outliers
1	A	0	3

All (2) bond length outliers are listed below:

Mol	Chain	Res	Type	Atoms	Z	Observed(Å)	Ideal(Å)
1	A	564	CYS	CB-SG	-5.95	1.72	1.81
1	A	859	GLY	C-N	5.37	1.46	1.34

The worst 5 of 6 bond angle outliers are listed below:

Mol	Chain	Res	Type	Atoms	Z	Observed(°)	Ideal(°)
1	A	858	SER	O-C-N	-6.79	111.66	123.20
1	A	858	SER	C-N-CA	-6.65	108.33	122.30
1	A	927	ARG	NE-CZ-NH2	-5.85	117.37	120.30
1	A	538	ASP	CB-CG-OD2	-5.60	113.26	118.30
1	A	564	CYS	CA-CB-SG	5.52	123.94	114.00

There are no chirality outliers.

All (3) planarity outliers are listed below:

Mol	Chain	Res	Type	Group
1	A	859	GLY	Mainchain

*Continued on next page...*



*Continued from previous page...*

Mol	Chain	Res	Type	Group
1	A	926[A]	ARG	Sidechain
1	A	926[B]	ARG	Sidechain

## 5.2 Too-close contacts

In the following table, the Non-H and H(model) columns list the number of non-hydrogen atoms and hydrogen atoms in the chain respectively. The H(added) column lists the number of hydrogen atoms added and optimized by MolProbity. The Clashes column lists the number of clashes within the asymmetric unit, whereas Symm-Clashes lists symmetry-related clashes.

Mol	Chain	Non-H	H(model)	H(added)	Clashes	Symm-Clashes
1	A	3267	0	3151	16	0
2	A	2	0	0	0	0
3	A	2	0	0	0	0
4	A	3	0	0	0	0
5	A	1	0	0	0	0
6	A	12	0	17	0	0
7	A	14	0	19	3	0
8	A	428	0	0	4	0
All	All	3729	0	3187	19	0

The all-atom clashscore is defined as the number of clashes found per 1000 atoms (including hydrogen atoms). The all-atom clashscore for this structure is 3.

The worst 5 of 19 close contacts within the same asymmetric unit are listed below, sorted by their clash magnitude.

Atom-1	Atom-2	Interatomic distance (Å)	Clash overlap (Å)
7:A:1945:BTB:O1	7:A:1945:BTB:H52	1.45	1.13
7:A:1945:BTB:O1	7:A:1945:BTB:C5	2.24	0.86
1:A:659[B]:LYS:HD3	8:A:2106:HOH:O	1.81	0.79
1:A:527[B]:VAL:CG2	1:A:555[B]:LEU:HD23	2.15	0.76
1:A:527[B]:VAL:HG23	1:A:555[B]:LEU:HD23	1.76	0.65

There are no symmetry-related clashes.

## 5.3 Torsion angles [i](#)

### 5.3.1 Protein backbone [i](#)

In the following table, the Percentiles column shows the percent Ramachandran outliers of the chain as a percentile score with respect to all X-ray entries followed by that with respect to entries of similar resolution.

The Analysed column shows the number of residues for which the backbone conformation was analysed, and the total number of residues.

Mol	Chain	Analysed	Favoured	Allowed	Outliers	Percentiles	
1	A	436/437 (100%)	420 (96%)	16 (4%)	0	100	100

There are no Ramachandran outliers to report.

### 5.3.2 Protein sidechains [i](#)

In the following table, the Percentiles column shows the percent sidechain outliers of the chain as a percentile score with respect to all X-ray entries followed by that with respect to entries of similar resolution.

The Analysed column shows the number of residues for which the sidechain conformation was analysed, and the total number of residues.

Mol	Chain	Analysed	Rotameric	Outliers	Percentiles	
1	A	359/355 (101%)	357 (99%)	2 (1%)	84	62

All (2) residues with a non-rotameric sidechain are listed below:

Mol	Chain	Res	Type
1	A	531	THR
1	A	875	TYR

Sometimes sidechains can be flipped to improve hydrogen bonding and reduce clashes. All (1) such sidechains are listed below:

Mol	Chain	Res	Type
1	A	846	ASN

### 5.3.3 RNA [i](#)

There are no RNA molecules in this entry.

## 5.4 Non-standard residues in protein, DNA, RNA chains [i](#)

There are no non-standard protein/DNA/RNA residues in this entry.

## 5.5 Carbohydrates [i](#)

There are no oligosaccharides in this entry.

## 5.6 Ligand geometry [i](#)

Of 12 ligands modelled in this entry, 8 are monoatomic - leaving 4 for Mogul analysis.

In the following table, the Counts columns list the number of bonds (or angles) for which Mogul statistics could be retrieved, the number of bonds (or angles) that are observed in the model and the number of bonds (or angles) that are defined in the Chemical Component Dictionary. The Link column lists molecule types, if any, to which the group is linked. The Z score for a bond length (or angle) is the number of standard deviations the observed value is removed from the expected value. A bond length (or angle) with  $|Z| > 2$  is considered an outlier worth inspection. RMSZ is the root-mean-square of all Z scores of the bond lengths (or angles).

Mol	Type	Chain	Res	Link	Bond lengths			Bond angles		
					Counts	RMSZ	$\# Z  > 2$	Counts	RMSZ	$\# Z  > 2$
7	BTB	A	1945	-	13,13,13	0.86	0	7,16,16	1.93	1 (14%)
6	EDO	A	1944	5	3,3,3	0.36	0	2,2,2	0.41	0
6	EDO	A	1942	-	3,3,3	0.23	0	2,2,2	0.33	0
6	EDO	A	1943	-	3,3,3	0.40	0	2,2,2	0.26	0

In the following table, the Chirals column lists the number of chiral outliers, the number of chiral centers analysed, the number of these observed in the model and the number defined in the Chemical Component Dictionary. Similar counts are reported in the Torsion and Rings columns. '-' means no outliers of that kind were identified.

Mol	Type	Chain	Res	Link	Chirals	Torsions	Rings
7	BTB	A	1945	-	-	2/21/21/21	-
6	EDO	A	1944	5	-	1/1/1/1	-
6	EDO	A	1942	-	-	0/1/1/1	-
6	EDO	A	1943	-	-	0/1/1/1	-

There are no bond length outliers.

All (1) bond angle outliers are listed below:

Mol	Chain	Res	Type	Atoms	Z	Observed(°)	Ideal(°)
7	A	1945	BTB	O1-C1-C2	-4.78	98.36	111.44

There are no chirality outliers.

All (3) torsion outliers are listed below:

Mol	Chain	Res	Type	Atoms
7	A	1945	BTB	C8-C7-N-C5
7	A	1945	BTB	N-C7-C8-O8
6	A	1944	EDO	O1-C1-C2-O2

There are no ring outliers.

1 monomer is involved in 3 short contacts:

Mol	Chain	Res	Type	Clashes	Symm-Clashes
7	A	1945	BTB	3	0

## 5.7 Other polymers [i](#)

There are no such residues in this entry.

## 5.8 Polymer linkage issues [i](#)

There are no chain breaks in this entry.

## 6 Fit of model and data [i](#)

### 6.1 Protein, DNA and RNA chains [i](#)

In the following table, the column labelled ‘#RSRZ> 2’ contains the number (and percentage) of RSRZ outliers, followed by percent RSRZ outliers for the chain as percentile scores relative to all X-ray entries and entries of similar resolution. The OWAB column contains the minimum, median, 95<sup>th</sup> percentile and maximum values of the occupancy-weighted average B-factor per residue. The column labelled ‘Q< 0.9’ lists the number of (and percentage) of residues with an average occupancy less than 0.9.

Mol	Chain	Analysed	<RSRZ>	#RSRZ>2	OWAB(Å <sup>2</sup> )	Q<0.9
1	A	411/437 (94%)	-0.10	5 (1%) 76 82	4, 9, 17, 30	33 (8%)

All (5) RSRZ outliers are listed below:

Mol	Chain	Res	Type	RSRZ
1	A	788	ASP	6.6
1	A	859	GLY	4.9
1	A	523	GLY	4.1
1	A	858	SER	2.4
1	A	821	SER	2.4

### 6.2 Non-standard residues in protein, DNA, RNA chains [i](#)

There are no non-standard protein/DNA/RNA residues in this entry.

### 6.3 Carbohydrates [i](#)

There are no monosaccharides in this entry.

### 6.4 Ligands [i](#)

In the following table, the Atoms column lists the number of modelled atoms in the group and the number defined in the chemical component dictionary. The B-factors column lists the minimum, median, 95<sup>th</sup> percentile and maximum values of B factors of atoms in the group. The column labelled ‘Q< 0.9’ lists the number of atoms with occupancy less than 0.9.

Mol	Type	Chain	Res	Atoms	RSCC	RSR	B-factors(Å <sup>2</sup> )	Q<0.9
7	BTB	A	1945	14/14	0.84	0.19	7,11,15,20	14
6	EDO	A	1943	4/4	0.95	0.08	15,16,19,22	0

*Continued on next page...*

*Continued from previous page...*

Mol	Type	Chain	Res	Atoms	RSCC	RSR	B-factors( $\text{\AA}^2$ )	Q<0.9
6	EDO	A	1944	4/4	0.95	0.15	14,17,18,18	4
6	EDO	A	1942	4/4	0.95	0.11	12,16,21,25	0
2	CA	A	1934	1/1	0.99	0.04	7,7,7,7	1
4	MG	A	1939	1/1	0.99	0.04	10,10,10,10	1
2	CA	A	1936	1/1	1.00	0.02	12,12,12,12	0
5	ZN	A	1941	1/1	1.00	0.03	10,10,10,10	1
3	CL	A	1935	1/1	1.00	0.04	11,11,11,11	0
3	CL	A	1940	1/1	1.00	0.06	9,9,9,9	1
4	MG	A	1937	1/1	1.00	0.02	14,14,14,14	0
4	MG	A	1938	1/1	1.00	0.06	17,17,17,17	1

## 6.5 Other polymers [i](#)

There are no such residues in this entry.