



wwPDB X-ray Structure Validation Summary Report ⓘ

Dec 23, 2024 – 04:12 PM JST

PDB ID : 8Y03
Title : Crystal structure of LbCas12a-crRNA complex
Authors : Lin, X.; Chen, J.; Liu, L.
Deposited on : 2024-01-22
Resolution : 2.93 Å(reported)

This is a wwPDB X-ray Structure Validation Summary Report for a publicly released PDB entry.

We welcome your comments at validation@mail.wwpdb.org

A user guide is available at

<https://www.wwpdb.org/validation/2017/XrayValidationReportHelp>

with specific help available everywhere you see the ⓘ symbol.

The types of validation reports are described at

<http://www.wwpdb.org/validation/2017/FAQs#types>.

The following versions of software and data (see [references ⓘ](#)) were used in the production of this report:

MolProbity	:	4.02b-467
Xtriage (Phenix)	:	1.21
EDS	:	3.0
Percentile statistics	:	20231227.v01 (using entries in the PDB archive December 27th 2023)
CCP4	:	9.0.004 (Gargrove)
Density-Fitness	:	1.0.11
Ideal geometry (proteins)	:	Engh & Huber (2001)
Ideal geometry (DNA, RNA)	:	Parkinson et al. (1996)
Validation Pipeline (wwPDB-VP)	:	2.40

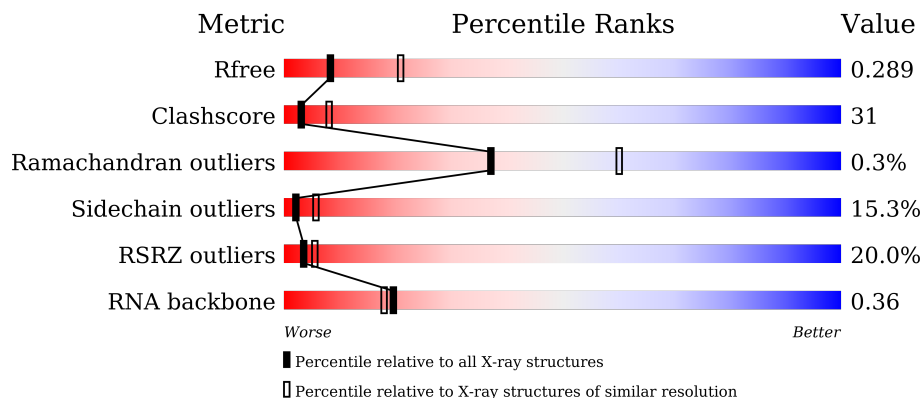
1 Overall quality at a glance

The following experimental techniques were used to determine the structure:

X-RAY DIFFRACTION

The reported resolution of this entry is 2.93 Å.

Percentile scores (ranging between 0-100) for global validation metrics of the entry are shown in the following graphic. The table shows the number of entries on which the scores are based.



Metric	Whole archive (#Entries)	Similar resolution (#Entries, resolution range(Å))
R_{free}	164625	1067 (2.96-2.92)
Clashscore	180529	1122 (2.96-2.92)
Ramachandran outliers	177936	1075 (2.96-2.92)
Sidechain outliers	177891	1075 (2.96-2.92)
RSRZ outliers	164620	1067 (2.96-2.92)
RNA backbone	3690	1105 (3.18-2.70)

The table below summarises the geometric issues observed across the polymeric chains and their fit to the electron density. The red, orange, yellow and green segments of the lower bar indicate the fraction of residues that contain outliers for ≥ 3 , 2, 1 and 0 types of geometric quality criteria respectively. A grey segment represents the fraction of residues that are not modelled. The numeric value for each fraction is indicated below the corresponding segment, with a dot representing fractions $\leq 5\%$. The upper red bar (where present) indicates the fraction of residues that have poor fit to the electron density. The numeric value is given above the bar.

Mol	Chain	Length	Quality of chain
1	A	1228	<div> <div>20%</div> <div>58%</div> <div>32%</div> <div>8%</div> </div>
2	G	40	<div> <div>8%</div> <div>28%</div> <div>42%</div> <div>22%</div> <div>8%</div> </div>

2 Entry composition

There are 3 unique types of molecules in this entry. The entry contains 10770 atoms, of which 0 are hydrogens and 0 are deuteriums.

In the tables below, the ZeroOcc column contains the number of atoms modelled with zero occupancy, the AltConf column contains the number of residues with at least one atom in alternate conformation and the Trace column contains the number of residues modelled with at most 2 atoms.

- Molecule 1 is a protein called LbCas12a.

Mol	Chain	Residues	Atoms					ZeroOcc	AltConf	Trace
1	A	1208	Total	C	N	O	S	0	0	0
			9918	6383	1628	1879	28			

- Molecule 2 is a RNA chain called RNA (41-MER).

Mol	Chain	Residues	Atoms					ZeroOcc	AltConf	Trace
2	G	40	Total	C	N	O	P	0	0	0
			850	381	152	277	40			

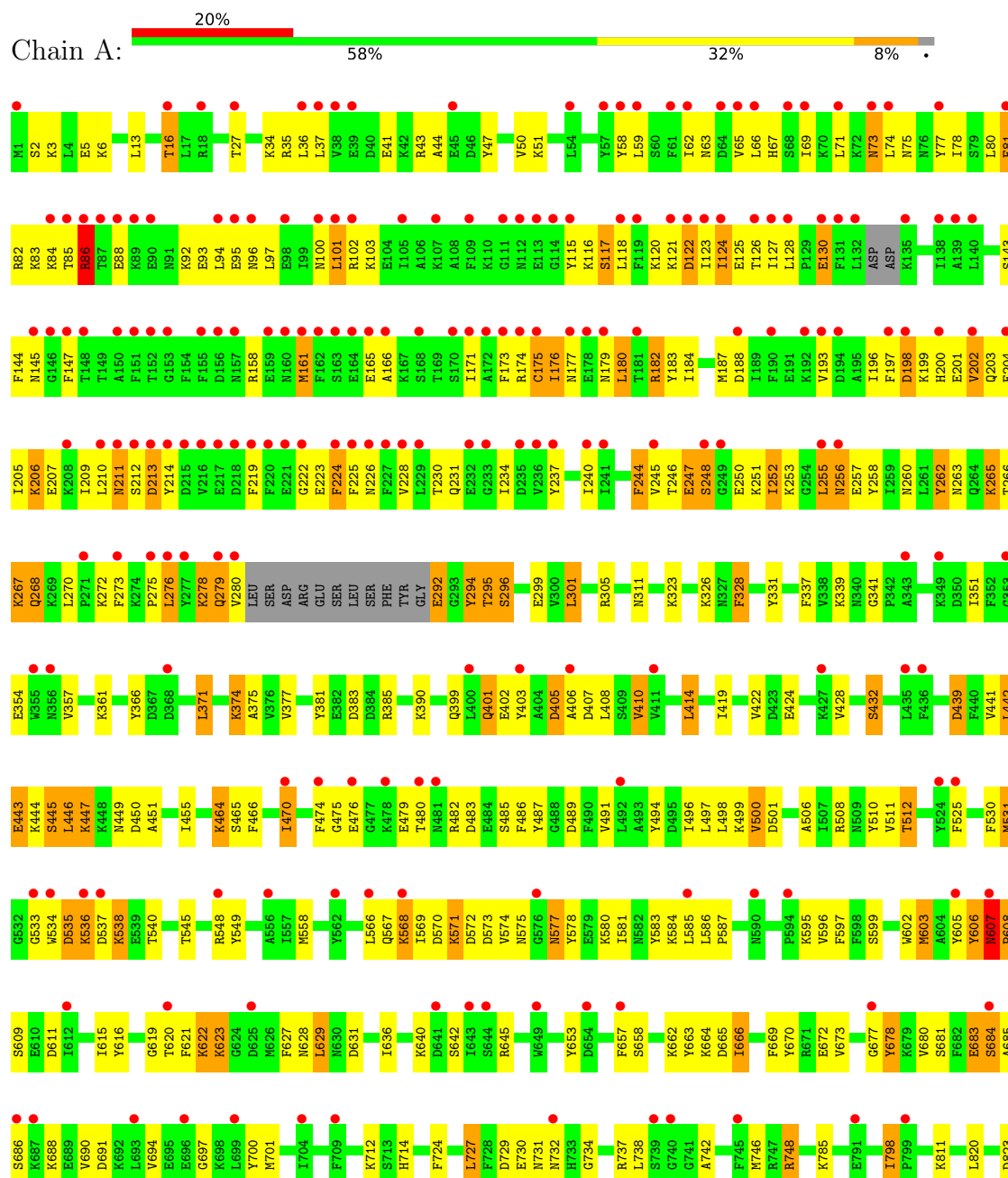
- Molecule 3 is MAGNESIUM ION (three-letter code: MG) (formula: Mg).

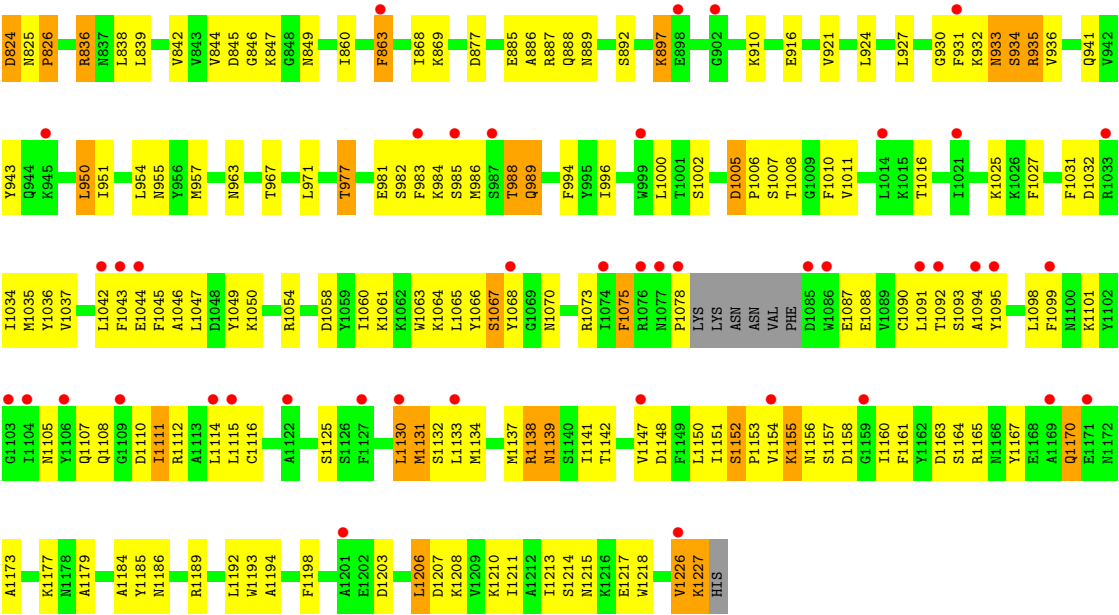
Mol	Chain	Residues	Atoms		ZeroOcc	AltConf
3	A	1	Total	Mg	1	0
			1	1		
3	G	1	Total	Mg	1	0
			1	1		

3 Residue-property plots

These plots are drawn for all protein, RNA, DNA and oligosaccharide chains in the entry. The first graphic for a chain summarises the proportions of the various outlier classes displayed in the second graphic. The second graphic shows the sequence view annotated by issues in geometry and electron density. Residues are color-coded according to the number of geometric quality criteria for which they contain at least one outlier: green = 0, yellow = 1, orange = 2 and red = 3 or more. A red dot above a residue indicates a poor fit to the electron density ($RSRZ > 2$). Stretches of 2 or more consecutive residues without any outlier are shown as a green connector. Residues present in the sample, but not in the model, are shown in grey.

• Molecule 1: LbCas12a





● Molecule 2: RNA (41-MER)



4 Data and refinement statistics

Property	Value	Source
Space group	C 1 2 1	Depositor
Cell constants a, b, c, α , β , γ	168.26Å 83.22Å 124.30Å 90.00° 106.21° 90.00°	Depositor
Resolution (Å)	49.66 – 2.93 49.66 – 2.93	Depositor EDS
% Data completeness (in resolution range)	98.9 (49.66-2.93) 98.9 (49.66-2.93)	Depositor EDS
R_{merge}	(Not available)	Depositor
R_{sym}	(Not available)	Depositor
$\langle I/\sigma(I) \rangle$ ¹	3.53 (at 2.91Å)	Xtriage
Refinement program	PHENIX 1.17.1_3660	Depositor
R, R_{free}	0.269 , 0.289 0.269 , 0.289	Depositor DCC
R_{free} test set	1752 reflections (4.91%)	wwPDB-VP
Wilson B-factor (Å ²)	47.0	Xtriage
Anisotropy	0.014	Xtriage
Bulk solvent k_{sol} (e/Å ³), B_{sol} (Å ²)	0.30 , 44.7	EDS
L-test for twinning ²	$\langle L \rangle = 0.49$, $\langle L^2 \rangle = 0.32$	Xtriage
Estimated twinning fraction	No twinning to report.	Xtriage
F_o, F_c correlation	0.85	EDS
Total number of atoms	10770	wwPDB-VP
Average B, all atoms (Å ²)	56.0	wwPDB-VP

Xtriage's analysis on translational NCS is as follows: *The largest off-origin peak in the Patterson function is 3.80% of the height of the origin peak. No significant pseudotranslation is detected.*

¹Intensities estimated from amplitudes.

²Theoretical values of $\langle |L| \rangle$, $\langle L^2 \rangle$ for acentric reflections are 0.5, 0.333 respectively for untwinned datasets, and 0.375, 0.2 for perfectly twinned datasets.

5 Model quality [i](#)

5.1 Standard geometry [i](#)

Bond lengths and bond angles in the following residue types are not validated in this section: MG

The Z score for a bond length (or angle) is the number of standard deviations the observed value is removed from the expected value. A bond length (or angle) with $|Z| > 5$ is considered an outlier worth inspection. RMSZ is the root-mean-square of all Z scores of the bond lengths (or angles).

Mol	Chain	Bond lengths		Bond angles	
		RMSZ	$\# Z > 5$	RMSZ	$\# Z > 5$
1	A	0.48	3/10122 (0.0%)	0.64	7/13600 (0.1%)
2	G	0.82	2/950 (0.2%)	1.33	13/1477 (0.9%)
All	All	0.52	5/11072 (0.0%)	0.74	20/15077 (0.1%)

All (5) bond length outliers are listed below:

Mol	Chain	Res	Type	Atoms	Z	Observed(Å)	Ideal(Å)
2	G	14	A	N9-C4	-5.86	1.34	1.37
1	A	1006	PRO	N-CD	5.24	1.55	1.47
1	A	826	PRO	N-CD	5.20	1.55	1.47
2	G	35	A	O3'-P	-5.05	1.55	1.61
1	A	608	PRO	N-CD	5.01	1.54	1.47

The worst 5 of 20 bond angle outliers are listed below:

Mol	Chain	Res	Type	Atoms	Z	Observed(°)	Ideal(°)
2	G	14	A	C2-N3-C4	-8.06	106.57	110.60
1	A	267	LYS	N-CA-C	-7.96	89.50	111.00
2	G	15	G	N1-C6-O6	-7.15	115.61	119.90
2	G	20	G	C8-N9-C4	-7.15	103.54	106.40
2	G	14	A	N1-C6-N6	7.06	122.84	118.60

There are no chirality outliers.

There are no planarity outliers.

5.2 Too-close contacts [i](#)

In the following table, the Non-H and H(model) columns list the number of non-hydrogen atoms and hydrogen atoms in the chain respectively. The H(added) column lists the number of hydrogen

atoms added and optimized by MolProbity. The Clashes column lists the number of clashes within the asymmetric unit, whereas Symm-Clashes lists symmetry-related clashes.

Mol	Chain	Non-H	H(model)	H(added)	Clashes	Symm-Clashes
1	A	9918	0	9825	588	0
2	G	850	0	431	81	0
3	A	1	0	0	0	0
3	G	1	0	0	0	0
All	All	10770	0	10256	647	0

The all-atom clashscore is defined as the number of clashes found per 1000 atoms (including hydrogen atoms). The all-atom clashscore for this structure is 31.

The worst 5 of 647 close contacts within the same asymmetric unit are listed below, sorted by their clash magnitude.

Atom-1	Atom-2	Interatomic distance (Å)	Clash overlap (Å)
1:A:535:ASP:HA	1:A:583:TYR:CB	1.47	1.40
1:A:1111:ILE:CD1	1:A:1115:LEU:HD21	1.50	1.40
1:A:1111:ILE:HD12	1:A:1115:LEU:CG	1.58	1.33
1:A:1111:ILE:HD12	1:A:1115:LEU:CD2	1.65	1.24
1:A:941:GLN:CB	2:G:29:C:H42	1.50	1.23

There are no symmetry-related clashes.

5.3 Torsion angles [i](#)

5.3.1 Protein backbone [i](#)

In the following table, the Percentiles column shows the percent Ramachandran outliers of the chain as a percentile score with respect to all X-ray entries followed by that with respect to entries of similar resolution.

The Analysed column shows the number of residues for which the backbone conformation was analysed, and the total number of residues.

Mol	Chain	Analysed	Favoured	Allowed	Outliers	Percentiles
1	A	1200/1228 (98%)	1164 (97%)	32 (3%)	4 (0%)	37 60

All (4) Ramachandran outliers are listed below:

Mol	Chain	Res	Type
1	A	214	TYR

Continued on next page...

Continued from previous page...

Mol	Chain	Res	Type
1	A	248	SER
1	A	607	ASN
1	A	86	ARG

5.3.2 Protein sidechains [i](#)

In the following table, the Percentiles column shows the percent sidechain outliers of the chain as a percentile score with respect to all X-ray entries followed by that with respect to entries of similar resolution.

The Analysed column shows the number of residues for which the sidechain conformation was analysed, and the total number of residues.

Mol	Chain	Analysed	Rotameric	Outliers	Percentiles
1	A	1080/1115 (97%)	915 (85%)	165 (15%)	2 6

5 of 165 residues with a non-rotameric sidechain are listed below:

Mol	Chain	Res	Type
1	A	836	ARG
1	A	1050	LYS
1	A	863	PHE
1	A	934	SER
1	A	1114	LEU

Sometimes sidechains can be flipped to improve hydrogen bonding and reduce clashes. 5 of 16 such sidechains are listed below:

Mol	Chain	Res	Type
1	A	1170	GLN
1	A	1139	ASN
1	A	630	ASN
1	A	989	GLN
1	A	607	ASN

5.3.3 RNA [i](#)

Mol	Chain	Analysed	Backbone Outliers	Pucker Outliers
2	G	39/40 (97%)	15 (38%)	3 (7%)

5 of 15 RNA backbone outliers are listed below:

Mol	Chain	Res	Type
2	G	13	A
2	G	14	A
2	G	16	U
2	G	17	G
2	G	20	G

All (3) RNA pucker outliers are listed below:

Mol	Chain	Res	Type
2	G	28	C
2	G	29	C
2	G	34	A

5.4 Non-standard residues in protein, DNA, RNA chains [i](#)

There are no non-standard protein/DNA/RNA residues in this entry.

5.5 Carbohydrates [i](#)

There are no oligosaccharides in this entry.

5.6 Ligand geometry [i](#)

Of 2 ligands modelled in this entry, 2 are monoatomic - leaving 0 for Mogul analysis.

There are no bond length outliers.

There are no bond angle outliers.

There are no chirality outliers.

There are no torsion outliers.

There are no ring outliers.

No monomer is involved in short contacts.

5.7 Other polymers [i](#)

There are no such residues in this entry.

5.8 Polymer linkage issues ⓘ

There are no chain breaks in this entry.

6 Fit of model and data [i](#)

6.1 Protein, DNA and RNA chains [i](#)

In the following table, the column labelled ‘#RSRZ > 2’ contains the number (and percentage) of RSRZ outliers, followed by percent RSRZ outliers for the chain as percentile scores relative to all X-ray entries and entries of similar resolution. The OWAB column contains the minimum, median, 95th percentile and maximum values of the occupancy-weighted average B-factor per residue. The column labelled ‘Q < 0.9’ lists the number of (and percentage) of residues with an average occupancy less than 0.9.

Mol	Chain	Analysed	<RSRZ>	#RSRZ>2	OWAB(Å ²)	Q<0.9
1	A	1208/1228 (98%)	1.20	247 (20%) 3 5	8, 57, 99, 141	0
2	G	40/40 (100%)	0.33	3 (7%) 22 22	12, 33, 97, 99	0
All	All	1248/1268 (98%)	1.17	250 (20%) 3 5	8, 56, 99, 141	0

The worst 5 of 250 RSRZ outliers are listed below:

Mol	Chain	Res	Type	RSRZ
1	A	202	VAL	8.4
1	A	228	VAL	7.6
1	A	229	LEU	7.5
1	A	166	ALA	6.3
1	A	216	VAL	6.3

6.2 Non-standard residues in protein, DNA, RNA chains [i](#)

There are no non-standard protein/DNA/RNA residues in this entry.

6.3 Carbohydrates [i](#)

There are no monosaccharides in this entry.

6.4 Ligands [i](#)

LIGAND-RSR INFOmissingINFO

6.5 Other polymers [i](#)

There are no such residues in this entry.