



Full wwPDB X-ray Structure Validation Report ⓘ

Jun 12, 2024 – 11:16 AM EDT

PDB ID : 2X8O
Title : Crystal Structure of CbpF in complex with Atropine by soaking
Authors : Silva-Martin, N.; Hermoso, J.A.
Deposited on : 2010-03-10
Resolution : 2.03 Å(reported)

This is a Full wwPDB X-ray Structure Validation Report for a publicly released PDB entry.

We welcome your comments at validation@mail.wwpdb.org

A user guide is available at

<https://www.wwpdb.org/validation/2017/XrayValidationReportHelp>

with specific help available everywhere you see the ⓘ symbol.

The types of validation reports are described at

<http://www.wwpdb.org/validation/2017/FAQs#types>.

The following versions of software and data (see [references ⓘ](#)) were used in the production of this report:

MolProbity	:	4.02b-467
Mogul	:	2022.3.0, CSD as543be (2022)
Xtriage (Phenix)	:	1.20.1
EDS	:	2.36.2
buster-report	:	1.1.7 (2018)
Percentile statistics	:	20191225.v01 (using entries in the PDB archive December 25th 2019)
Refmac	:	5.8.0158
CCP4	:	7.0.044 (Gargrove)
Ideal geometry (proteins)	:	Engh & Huber (2001)
Ideal geometry (DNA, RNA)	:	Parkinson et al. (1996)
Validation Pipeline (wwPDB-VP)	:	2.36.2

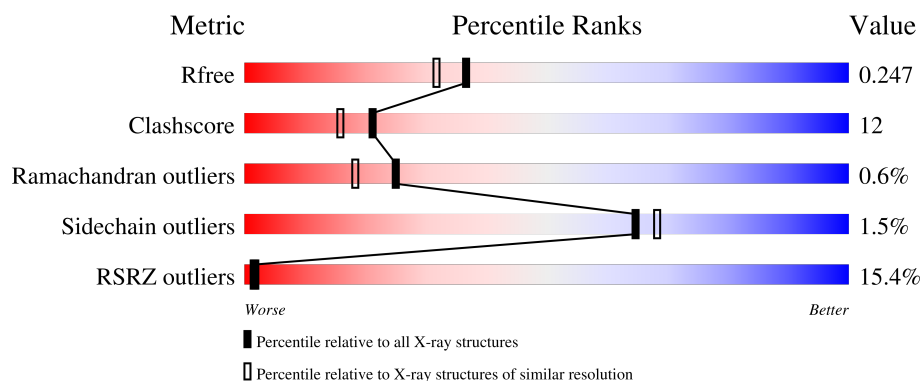
1 Overall quality at a glance

The following experimental techniques were used to determine the structure:

X-RAY DIFFRACTION

The reported resolution of this entry is 2.03 Å.

Percentile scores (ranging between 0-100) for global validation metrics of the entry are shown in the following graphic. The table shows the number of entries on which the scores are based.



Metric	Whole archive (#Entries)	Similar resolution (#Entries, resolution range(Å))
R_{free}	130704	10434 (2.04-2.00)
Clashscore	141614	11643 (2.04-2.00)
Ramachandran outliers	138981	11493 (2.04-2.00)
Sidechain outliers	138945	11492 (2.04-2.00)
RSRZ outliers	127900	10220 (2.04-2.00)

The table below summarises the geometric issues observed across the polymeric chains and their fit to the electron density. The red, orange, yellow and green segments of the lower bar indicate the fraction of residues that contain outliers for ≥ 3 , 2, 1 and 0 types of geometric quality criteria respectively. A grey segment represents the fraction of residues that are not modelled. The numeric value for each fraction is indicated below the corresponding segment, with a dot representing fractions $\leq 5\%$. The upper red bar (where present) indicates the fraction of residues that have poor fit to the electron density. The numeric value is given above the bar.

Mol	Chain	Length	Quality of chain
1	A	311	<div> <div>15%</div> <div>79%</div> <div>21%</div> </div>

The following table lists non-polymeric compounds, carbohydrate monomers and non-standard residues in protein, DNA, RNA chains that are outliers for geometric or electron-density-fit criteria:

Mol	Type	Chain	Res	Chirality	Geometry	Clashes	Electron density
2	CHT	A	1322	-	X	-	-

Continued on next page...

Continued from previous page...

Mol	Type	Chain	Res	Chirality	Geometry	Clashes	Electron density
4	OIN	A	1314	-	-	-	X
5	GOL	A	1321	-	-	X	-

2 Entry composition [i](#)

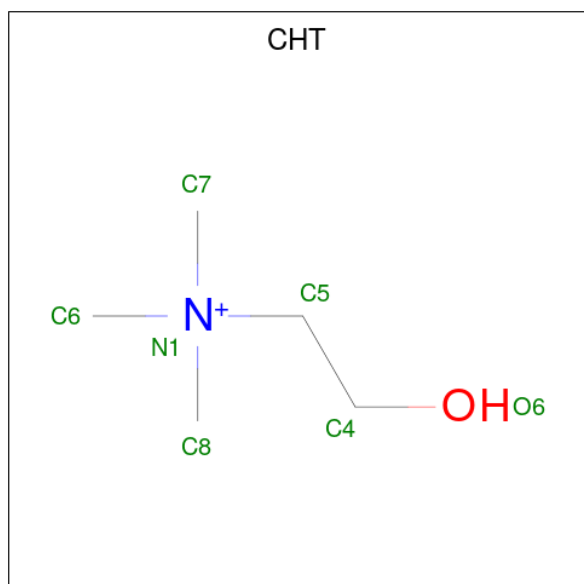
There are 6 unique types of molecules in this entry. The entry contains 2905 atoms, of which 0 are hydrogens and 0 are deuteriums.

In the tables below, the ZeroOcc column contains the number of atoms modelled with zero occupancy, the AltConf column contains the number of residues with at least one atom in alternate conformation and the Trace column contains the number of residues modelled with at most 2 atoms.

- Molecule 1 is a protein called CHOLINE-BINDING PROTEIN F.

Mol	Chain	Residues	Atoms					ZeroOcc	AltConf	Trace
1	A	311	Total	C	N	O	S	0	0	0
			2581	1672	416	487	6			

- Molecule 2 is CHOLINE ION (three-letter code: CHT) (formula: C₅H₁₄NO).



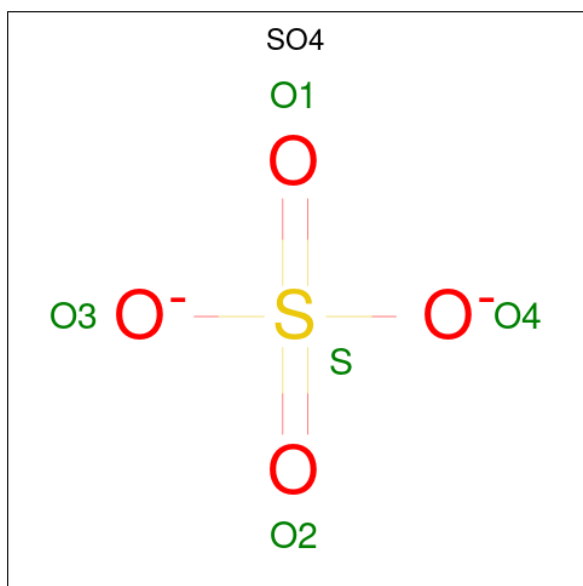
Mol	Chain	Residues	Atoms				ZeroOcc	AltConf
2	A	1	Total	C	N	O	0	0
			7	5	1	1		
2	A	1	Total	C	N	O	0	0
			7	5	1	1		
2	A	1	Total	C	N	O	0	0
			7	5	1	1		
2	A	1	Total	C	N	O	0	0
			7	5	1	1		
2	A	1	Total	C	N	O	0	0
			7	5	1	1		

Continued on next page...

Continued from previous page...

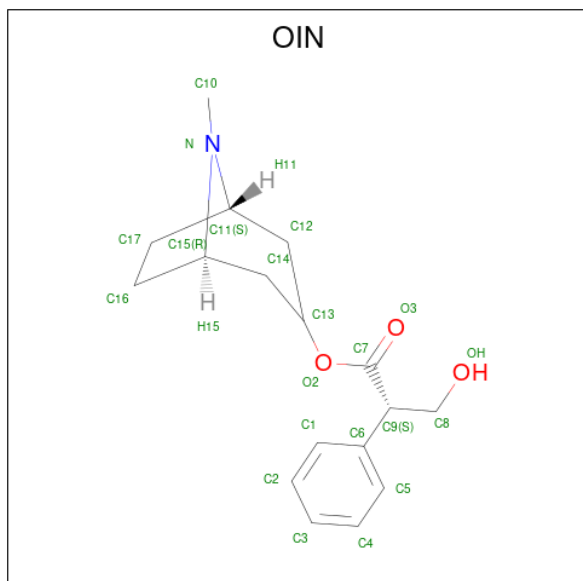
Mol	Chain	Residues	Atoms				ZeroOcc	AltConf
2	A	1	Total	C	N	O	0	0
			7	5	1	1		

- Molecule 3 is SULFATE ION (three-letter code: SO4) (formula: O₄S).



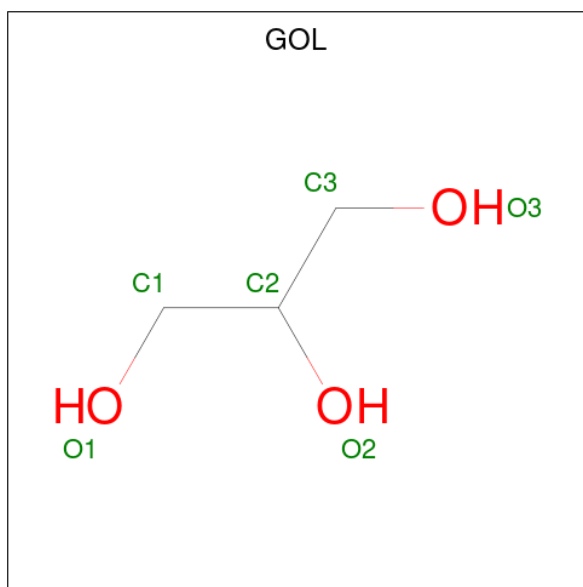
Mol	Chain	Residues	Atoms			ZeroOcc	AltConf
3	A	1	Total	O	S	0	0
			5	4	1		

- Molecule 4 is (1R,5S)-8-METHYL-8-AZABICYCLO[3.2.1]OCT-3-YL (2R)-3-HYDROXY-2-PHENYLPROPANOATE (three-letter code: OIN) (formula: C₁₇H₂₃NO₃).



Mol	Chain	Residues	Atoms				ZeroOcc	AltConf
4	A	1	Total	C	N	O	0	0
			21	17	1	3		
4	A	1	Total	C	N	O	0	0
			21	17	1	3		

- Molecule 5 is GLYCEROL (three-letter code: GOL) (formula: $C_3H_8O_3$).



Mol	Chain	Residues	Atoms			ZeroOcc	AltConf
5	A	1	Total	C	O	0	0
			6	3	3		
5	A	1	Total	C	O	0	0
			6	3	3		
5	A	1	Total	C	O	0	0
			6	3	3		
5	A	1	Total	C	O	0	0
			6	3	3		

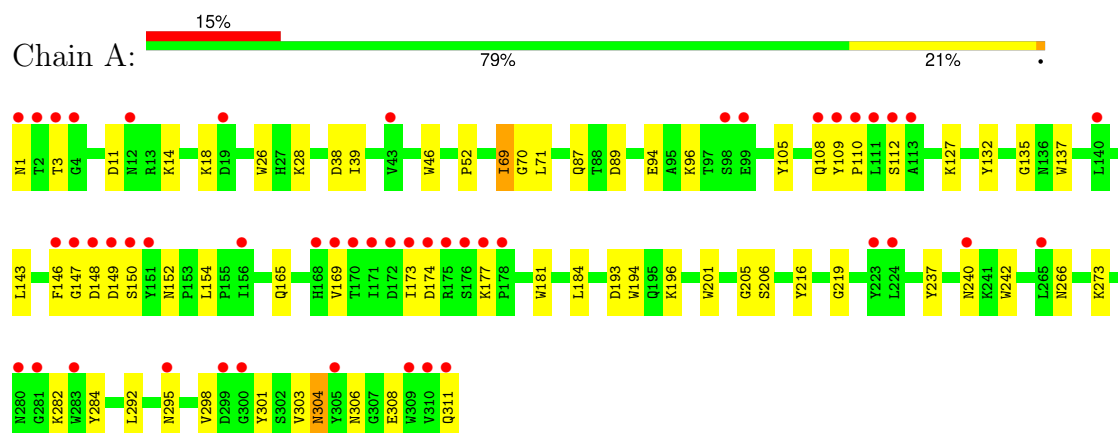
- Molecule 6 is water.

Mol	Chain	Residues	Atoms		ZeroOcc	AltConf
6	A	211	Total	O	0	0
			211	211		

3 Residue-property plots [i](#)

These plots are drawn for all protein, RNA, DNA and oligosaccharide chains in the entry. The first graphic for a chain summarises the proportions of the various outlier classes displayed in the second graphic. The second graphic shows the sequence view annotated by issues in geometry and electron density. Residues are color-coded according to the number of geometric quality criteria for which they contain at least one outlier: green = 0, yellow = 1, orange = 2 and red = 3 or more. A red dot above a residue indicates a poor fit to the electron density ($RSRZ > 2$). Stretches of 2 or more consecutive residues without any outlier are shown as a green connector. Residues present in the sample, but not in the model, are shown in grey.

• Molecule 1: CHOLINE-BINDING PROTEIN F



4 Data and refinement statistics

Property	Value	Source
Space group	P 21 21 2	Depositor
Cell constants a, b, c, α , β , γ	52.41Å 116.75Å 73.89Å 90.00° 90.00° 90.00°	Depositor
Resolution (Å)	24.70 – 2.03 24.70 – 2.03	Depositor EDS
% Data completeness (in resolution range)	98.8 (24.70-2.03) 98.5 (24.70-2.03)	Depositor EDS
R_{merge}	0.09	Depositor
R_{sym}	(Not available)	Depositor
$\langle I/\sigma(I) \rangle$ ¹	1.39 (at 2.03Å)	Xtriage
Refinement program	CNS 1.2	Depositor
R, R_{free}	0.222 , 0.260 0.210 , 0.247	Depositor DCC
R_{free} test set	1507 reflections (5.07%)	wwPDB-VP
Wilson B-factor (Å ²)	32.8	Xtriage
Anisotropy	0.081	Xtriage
Bulk solvent k_{sol} (e/Å ³), B_{sol} (Å ²)	0.39 , 57.3	EDS
L-test for twinning ²	$\langle L \rangle = 0.48$, $\langle L^2 \rangle = 0.31$	Xtriage
Estimated twinning fraction	No twinning to report.	Xtriage
F_o, F_c correlation	0.94	EDS
Total number of atoms	2905	wwPDB-VP
Average B, all atoms (Å ²)	36.0	wwPDB-VP

Xtriage's analysis on translational NCS is as follows: *The largest off-origin peak in the Patterson function is 5.61% of the height of the origin peak. No significant pseudotranslation is detected.*

¹Intensities estimated from amplitudes.

²Theoretical values of $\langle |L| \rangle$, $\langle L^2 \rangle$ for acentric reflections are 0.5, 0.333 respectively for untwinned datasets, and 0.375, 0.2 for perfectly twinned datasets.

5 Model quality

5.1 Standard geometry

Bond lengths and bond angles in the following residue types are not validated in this section: OIN, CHT, GOL, SO4

The Z score for a bond length (or angle) is the number of standard deviations the observed value is removed from the expected value. A bond length (or angle) with $|Z| > 5$ is considered an outlier worth inspection. RMSZ is the root-mean-square of all Z scores of the bond lengths (or angles).

Mol	Chain	Bond lengths		Bond angles	
		RMSZ	$\# Z > 5$	RMSZ	$\# Z > 5$
1	A	0.37	0/2671	0.58	0/3630

There are no bond length outliers.

There are no bond angle outliers.

There are no chirality outliers.

There are no planarity outliers.

5.2 Too-close contacts

In the following table, the Non-H and H(model) columns list the number of non-hydrogen atoms and hydrogen atoms in the chain respectively. The H(added) column lists the number of hydrogen atoms added and optimized by MolProbity. The Clashes column lists the number of clashes within the asymmetric unit, whereas Symm-Clashes lists symmetry-related clashes.

Mol	Chain	Non-H	H(model)	H(added)	Clashes	Symm-Clashes
1	A	2581	0	2372	57	0
2	A	42	0	84	1	0
3	A	5	0	0	0	0
4	A	42	0	46	9	0
5	A	24	0	32	12	0
6	A	211	0	0	2	0
All	All	2905	0	2534	63	0

The all-atom clashscore is defined as the number of clashes found per 1000 atoms (including hydrogen atoms). The all-atom clashscore for this structure is 12.

All (63) close contacts within the same asymmetric unit are listed below, sorted by their clash magnitude.

Atom-1	Atom-2	Interatomic distance (Å)	Clash overlap (Å)
1:A:11:ASP:HB3	4:A:1314:OIN:H121	1.39	1.04
1:A:87:GLN:HE21	1:A:89:ASP:H	1.17	0.91
1:A:143:LEU:HD21	1:A:169:VAL:HG11	1.59	0.82
1:A:137:TRP:HE1	5:A:1316:GOL:H32	1.50	0.77
1:A:69:ILE:HG23	1:A:71:LEU:HG	1.67	0.77
1:A:152:ASN:HD21	1:A:154:LEU:HB2	1.51	0.75
1:A:282:LYS:HD3	1:A:308:GLU:OE2	1.86	0.74
1:A:94:GLU:HB2	1:A:112:SER:HB2	1.73	0.71
1:A:304:ASN:C	1:A:304:ASN:HD22	1.96	0.68
1:A:205:GLY:HA3	5:A:1315:GOL:H2	1.76	0.67
1:A:201:TRP:HE1	5:A:1321:GOL:H12	1.62	0.64
1:A:137:TRP:NE1	5:A:1316:GOL:H32	2.14	0.63
1:A:11:ASP:CB	4:A:1314:OIN:H121	2.22	0.62
1:A:69:ILE:HD13	1:A:70:GLY:H	1.64	0.61
1:A:266:ASN:ND2	1:A:273:LYS:HE3	2.15	0.61
1:A:87:GLN:HE21	1:A:89:ASP:N	1.96	0.60
1:A:137:TRP:HE1	5:A:1316:GOL:C3	2.16	0.59
1:A:69:ILE:CG2	1:A:71:LEU:HG	2.34	0.58
1:A:143:LEU:CD2	1:A:169:VAL:HG11	2.32	0.55
1:A:146:PHE:HA	1:A:150:SER:O	2.08	0.54
1:A:196:LYS:NZ	5:A:1321:GOL:H11	2.23	0.53
1:A:143:LEU:HD11	1:A:173:ILE:HG12	1.91	0.53
1:A:304:ASN:ND2	1:A:306:ASN:H	2.07	0.52
1:A:194:TRP:CE2	4:A:1317:OIN:H121	2.44	0.52
1:A:174:ASP:OD1	1:A:177:LYS:HD3	2.11	0.50
1:A:303:VAL:HA	1:A:308:GLU:O	2.11	0.50
1:A:132:TYR:OH	1:A:135:GLY:HA2	2.12	0.50
1:A:14:LYS:HE2	1:A:105:TYR:CE2	2.47	0.49
1:A:165:GLN:HG3	1:A:181:TRP:CD2	2.48	0.49
1:A:206:SER:H	5:A:1315:GOL:H32	1.76	0.49
1:A:193:ASP:CG	1:A:194:TRP:H	2.16	0.48
1:A:284:TYR:HB3	1:A:292:LEU:HD11	1.96	0.48
1:A:201:TRP:HE1	5:A:1321:GOL:C1	2.24	0.48
4:A:1317:OIN:O2	4:A:1317:OIN:H162	2.14	0.47
1:A:165:GLN:HG3	1:A:181:TRP:CE2	2.50	0.47
4:A:1317:OIN:O2	4:A:1317:OIN:C16	2.62	0.47
1:A:216:TYR:OH	1:A:219:GLY:HA2	2.14	0.47
1:A:152:ASN:ND2	1:A:154:LEU:HB2	2.24	0.46
1:A:304:ASN:C	1:A:304:ASN:ND2	2.64	0.46
1:A:46:TRP:CD1	1:A:96:LYS:HB3	2.51	0.46
1:A:3:THR:O	1:A:18:LYS:HD2	2.16	0.46
1:A:69:ILE:HD13	1:A:70:GLY:N	2.31	0.45

Continued on next page...

Continued from previous page...

Atom-1	Atom-2	Interatomic distance (Å)	Clash overlap (Å)
1:A:196:LYS:NZ	5:A:1321:GOL:C1	2.80	0.45
1:A:298:VAL:O	1:A:301:TYR:HB2	2.17	0.45
4:A:1317:OIN:O2	4:A:1317:OIN:C17	2.65	0.45
1:A:201:TRP:NE1	5:A:1321:GOL:H12	2.30	0.45
1:A:127:LYS:NZ	6:A:2094:HOH:O	2.51	0.43
4:A:1314:OIN:O2	4:A:1314:OIN:H162	2.18	0.43
1:A:26:TRP:CD2	1:A:52:PRO:HB3	2.54	0.43
4:A:1314:OIN:O2	4:A:1314:OIN:C16	2.66	0.43
1:A:109:TYR:HA	1:A:110:PRO:HD3	1.83	0.43
1:A:184:LEU:HD22	1:A:184:LEU:N	2.34	0.42
1:A:143:LEU:HD21	1:A:169:VAL:CG1	2.41	0.42
1:A:201:TRP:HE1	5:A:1321:GOL:C2	2.33	0.42
1:A:237:TYR:CZ	1:A:240:ASN:HA	2.55	0.42
1:A:1:ASN:N	1:A:28:LYS:O	2.51	0.41
4:A:1314:OIN:O2	4:A:1314:OIN:C17	2.68	0.41
1:A:108:GLN:HG2	6:A:2081:HOH:O	2.21	0.41
1:A:38:ASP:OD1	1:A:39:ILE:HG23	2.21	0.41
1:A:152:ASN:ND2	1:A:154:LEU:H	2.19	0.40
1:A:242:TRP:CE2	2:A:1318:CHT:H61	2.56	0.40
1:A:149:ASP:O	1:A:150:SER:HB2	2.21	0.40
1:A:205:GLY:CA	5:A:1315:GOL:H2	2.50	0.40

There are no symmetry-related clashes.

5.3 Torsion angles ⓘ

5.3.1 Protein backbone ⓘ

In the following table, the Percentiles column shows the percent Ramachandran outliers of the chain as a percentile score with respect to all X-ray entries followed by that with respect to entries of similar resolution.

The Analysed column shows the number of residues for which the backbone conformation was analysed, and the total number of residues.

Mol	Chain	Analysed	Favoured	Allowed	Outliers	Percentiles
1	A	309/311 (99%)	289 (94%)	18 (6%)	2 (1%)	25 18

All (2) Ramachandran outliers are listed below:

Mol	Chain	Res	Type
1	A	148	ASP
1	A	147	GLY

5.3.2 Protein sidechains [i](#)

In the following table, the Percentiles column shows the percent sidechain outliers of the chain as a percentile score with respect to all X-ray entries followed by that with respect to entries of similar resolution.

The Analysed column shows the number of residues for which the sidechain conformation was analysed, and the total number of residues.

Mol	Chain	Analysed	Rotameric	Outliers	Percentiles	
1	A	259/259 (100%)	255 (98%)	4 (2%)	65	68

All (4) residues with a non-rotameric sidechain are listed below:

Mol	Chain	Res	Type
1	A	69	ILE
1	A	295	ASN
1	A	304	ASN
1	A	311	GLN

Sometimes sidechains can be flipped to improve hydrogen bonding and reduce clashes. All (10) such sidechains are listed below:

Mol	Chain	Res	Type
1	A	87	GLN
1	A	152	ASN
1	A	168	HIS
1	A	228	ASN
1	A	240	ASN
1	A	266	ASN
1	A	278	GLN
1	A	295	ASN
1	A	304	ASN
1	A	311	GLN

5.3.3 RNA [i](#)

There are no RNA molecules in this entry.

5.4 Non-standard residues in protein, DNA, RNA chains [i](#)

There are no non-standard protein/DNA/RNA residues in this entry.

5.5 Carbohydrates [i](#)

There are no monosaccharides in this entry.

5.6 Ligand geometry [i](#)

13 ligands are modelled in this entry.

In the following table, the Counts columns list the number of bonds (or angles) for which Mogul statistics could be retrieved, the number of bonds (or angles) that are observed in the model and the number of bonds (or angles) that are defined in the Chemical Component Dictionary. The Link column lists molecule types, if any, to which the group is linked. The Z score for a bond length (or angle) is the number of standard deviations the observed value is removed from the expected value. A bond length (or angle) with $|Z| > 2$ is considered an outlier worth inspection. RMSZ is the root-mean-square of all Z scores of the bond lengths (or angles).

Mol	Type	Chain	Res	Link	Bond lengths			Bond angles		
					Counts	RMSZ	$\# Z > 2$	Counts	RMSZ	$\# Z > 2$
4	OIN	A	1314	-	23,23,23	0.52	0	32,32,32	1.80	3 (9%)
5	GOL	A	1320	-	5,5,5	0.32	0	5,5,5	0.32	0
2	CHT	A	1318	-	6,6,6	0.92	0	8,8,8	5.60	5 (62%)
4	OIN	A	1317	-	23,23,23	0.52	0	32,32,32	1.80	3 (9%)
2	CHT	A	1322	-	6,6,6	0.94	0	8,8,8	5.58	5 (62%)
5	GOL	A	1316	-	5,5,5	0.31	0	5,5,5	0.30	0
5	GOL	A	1321	-	5,5,5	0.31	0	5,5,5	0.32	0
2	CHT	A	1323	-	6,6,6	0.97	0	8,8,8	5.61	5 (62%)
3	SO4	A	1313	-	4,4,4	0.36	0	6,6,6	0.08	0
2	CHT	A	1319	-	6,6,6	0.97	0	8,8,8	5.60	5 (62%)
5	GOL	A	1315	-	5,5,5	0.31	0	5,5,5	0.30	0
2	CHT	A	1324	-	6,6,6	0.92	0	8,8,8	5.60	5 (62%)
2	CHT	A	1312	-	6,6,6	0.87	0	8,8,8	5.59	5 (62%)

In the following table, the Chirals column lists the number of chiral outliers, the number of chiral centers analysed, the number of these observed in the model and the number defined in the Chemical Component Dictionary. Similar counts are reported in the Torsion and Rings columns. '-' means no outliers of that kind were identified.

Mol	Type	Chain	Res	Link	Chirals	Torsions	Rings
4	OIN	A	1314	-	-	5/14/35/35	0/4/3/3
5	GOL	A	1320	-	-	0/4/4/4	-
2	CHT	A	1318	-	-	2/4/4/4	-
4	OIN	A	1317	-	-	3/14/35/35	0/4/3/3
2	CHT	A	1322	-	-	3/4/4/4	-
5	GOL	A	1316	-	-	0/4/4/4	-
5	GOL	A	1321	-	-	0/4/4/4	-
2	CHT	A	1323	-	-	2/4/4/4	-
2	CHT	A	1319	-	-	2/4/4/4	-
5	GOL	A	1315	-	-	0/4/4/4	-
2	CHT	A	1324	-	-	2/4/4/4	-
2	CHT	A	1312	-	-	2/4/4/4	-

There are no bond length outliers.

All (36) bond angle outliers are listed below:

Mol	Chain	Res	Type	Atoms	Z	Observed(°)	Ideal(°)
2	A	1324	CHT	C8-N1-C6	-10.13	82.35	108.98
2	A	1323	CHT	C8-N1-C6	-10.06	82.56	108.98
2	A	1312	CHT	C8-N1-C6	-9.98	82.77	108.98
2	A	1319	CHT	C8-N1-C6	-9.87	83.06	108.98
2	A	1318	CHT	C8-N1-C6	-9.80	83.22	108.98
2	A	1322	CHT	C8-N1-C6	-9.65	83.63	108.98
2	A	1322	CHT	C8-N1-C7	-9.28	84.60	108.98
2	A	1318	CHT	C8-N1-C7	-9.20	84.82	108.98
2	A	1319	CHT	C8-N1-C7	-9.11	85.05	108.98
2	A	1323	CHT	C8-N1-C7	-8.93	85.52	108.98
2	A	1312	CHT	C8-N1-C7	-8.93	85.53	108.98
2	A	1324	CHT	C8-N1-C7	-8.79	85.89	108.98
4	A	1317	OIN	O2-C7-C9	7.00	120.10	111.06
4	A	1314	OIN	O2-C7-C9	6.88	119.94	111.06
2	A	1319	CHT	C8-N1-C5	-6.81	82.83	109.91
2	A	1318	CHT	C8-N1-C5	-6.80	82.87	109.91
2	A	1312	CHT	C8-N1-C5	-6.80	82.88	109.91
2	A	1324	CHT	C8-N1-C5	-6.80	82.89	109.91
2	A	1323	CHT	C8-N1-C5	-6.77	82.98	109.91
2	A	1322	CHT	C8-N1-C5	-6.77	82.98	109.91
4	A	1314	OIN	C13-O2-C7	-5.21	109.53	117.72
4	A	1317	OIN	C13-O2-C7	-4.81	110.17	117.72
2	A	1312	CHT	C6-N1-C5	3.68	124.53	109.91
2	A	1324	CHT	C6-N1-C5	3.65	124.41	109.91

Continued on next page...

Continued from previous page...

Mol	Chain	Res	Type	Atoms	Z	Observed(°)	Ideal(°)
2	A	1323	CHT	C6-N1-C5	3.63	124.32	109.91
2	A	1319	CHT	C6-N1-C5	3.58	124.13	109.91
2	A	1318	CHT	C6-N1-C5	3.47	123.71	109.91
2	A	1322	CHT	C6-N1-C5	3.44	123.59	109.91
2	A	1322	CHT	C7-N1-C6	2.79	116.31	108.98
2	A	1318	CHT	C7-N1-C6	2.75	116.21	108.98
2	A	1323	CHT	C7-N1-C6	2.74	116.18	108.98
2	A	1324	CHT	C7-N1-C6	2.73	116.14	108.98
2	A	1319	CHT	C7-N1-C6	2.68	116.01	108.98
2	A	1312	CHT	C7-N1-C6	2.66	115.96	108.98
4	A	1317	OIN	O2-C7-O3	-2.38	119.65	123.95
4	A	1314	OIN	O2-C7-O3	-2.36	119.69	123.95

There are no chirality outliers.

All (21) torsion outliers are listed below:

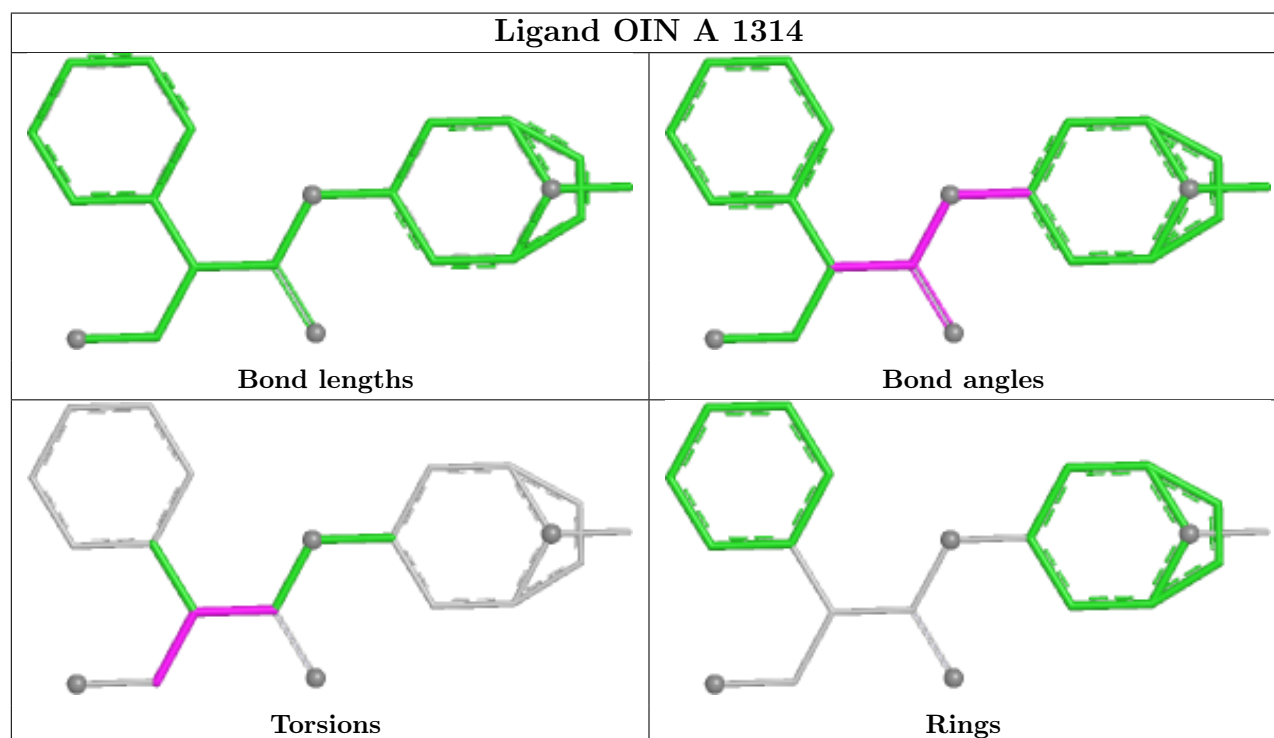
Mol	Chain	Res	Type	Atoms
4	A	1314	OIN	O2-C7-C9-C6
4	A	1314	OIN	O3-C7-C9-C6
2	A	1318	CHT	C4-C5-N1-C6
2	A	1318	CHT	C4-C5-N1-C7
2	A	1319	CHT	C4-C5-N1-C6
2	A	1319	CHT	C4-C5-N1-C7
2	A	1322	CHT	C4-C5-N1-C6
2	A	1322	CHT	C4-C5-N1-C7
2	A	1312	CHT	C4-C5-N1-C6
2	A	1312	CHT	C4-C5-N1-C7
2	A	1323	CHT	C4-C5-N1-C7
2	A	1324	CHT	C4-C5-N1-C7
2	A	1323	CHT	C4-C5-N1-C6
2	A	1324	CHT	C4-C5-N1-C6
2	A	1322	CHT	O6-C4-C5-N1
4	A	1317	OIN	O3-C7-C9-C6
4	A	1314	OIN	O3-C7-C9-C8
4	A	1317	OIN	O2-C7-C9-C6
4	A	1314	OIN	O2-C7-C9-C8
4	A	1314	OIN	OH-C8-C9-C7
4	A	1317	OIN	OH-C8-C9-C7

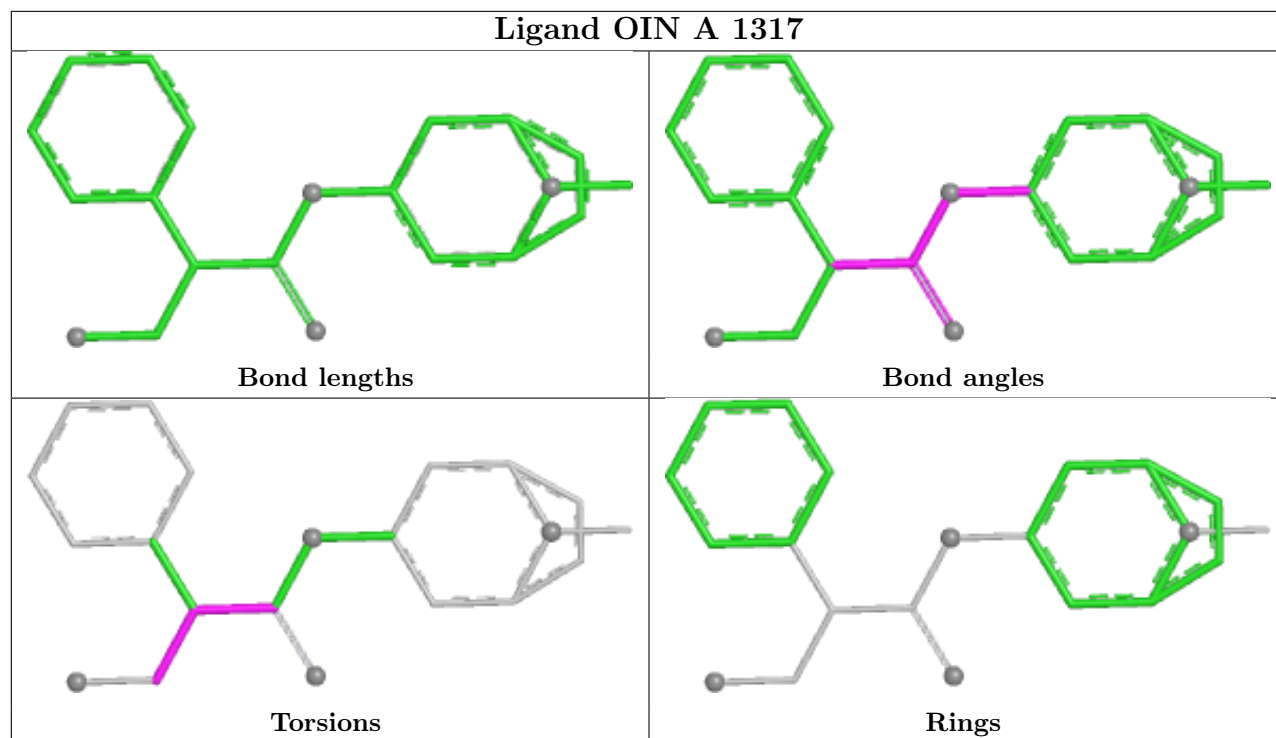
There are no ring outliers.

6 monomers are involved in 22 short contacts:

Mol	Chain	Res	Type	Clashes	Symm-Clashes
4	A	1314	OIN	5	0
2	A	1318	CHT	1	0
4	A	1317	OIN	4	0
5	A	1316	GOL	3	0
5	A	1321	GOL	6	0
5	A	1315	GOL	3	0

The following is a two-dimensional graphical depiction of Mogul quality analysis of bond lengths, bond angles, torsion angles, and ring geometry for all instances of the Ligand of Interest. In addition, ligands with molecular weight > 250 and outliers as shown on the validation Tables will also be included. For torsion angles, if less than 5% of the Mogul distribution of torsion angles is within 10 degrees of the torsion angle in question, then that torsion angle is considered an outlier. Any bond that is central to one or more torsion angles identified as an outlier by Mogul will be highlighted in the graph. For rings, the root-mean-square deviation (RMSD) between the ring in question and similar rings identified by Mogul is calculated over all ring torsion angles. If the average RMSD is greater than 60 degrees and the minimal RMSD between the ring in question and any Mogul-identified rings is also greater than 60 degrees, then that ring is considered an outlier. The outliers are highlighted in purple. The color gray indicates Mogul did not find sufficient equivalents in the CSD to analyse the geometry.





5.7 Other polymers [i](#)

There are no such residues in this entry.

5.8 Polymer linkage issues [i](#)

There are no chain breaks in this entry.

6 Fit of model and data ⓘ

6.1 Protein, DNA and RNA chains ⓘ

In the following table, the column labelled ‘#RSRZ> 2’ contains the number (and percentage) of RSRZ outliers, followed by percent RSRZ outliers for the chain as percentile scores relative to all X-ray entries and entries of similar resolution. The OWAB column contains the minimum, median, 95th percentile and maximum values of the occupancy-weighted average B-factor per residue. The column labelled ‘Q< 0.9’ lists the number of (and percentage) of residues with an average occupancy less than 0.9.

Mol	Chain	Analysed	<RSRZ>	#RSRZ>2	OWAB(Å ²)	Q<0.9
1	A	311/311 (100%)	1.03	48 (15%) 2 1	19, 31, 63, 76	0

All (48) RSRZ outliers are listed below:

Mol	Chain	Res	Type	RSRZ
1	A	147	GLY	11.6
1	A	176	SER	8.7
1	A	148	ASP	7.3
1	A	178	PRO	7.2
1	A	305	TYR	6.9
1	A	174	ASP	6.8
1	A	177	LYS	6.8
1	A	311	GLN	6.6
1	A	281	GLY	6.5
1	A	150	SER	6.3
1	A	149	ASP	6.2
1	A	146	PHE	5.9
1	A	111	LEU	5.7
1	A	175	ARG	5.6
1	A	112	SER	4.5
1	A	170	THR	4.4
1	A	310	VAL	4.4
1	A	168	HIS	4.4
1	A	171	ILE	4.4
1	A	280	ASN	4.2
1	A	151	TYR	4.0
1	A	113	ALA	3.9
1	A	109	TYR	3.7
1	A	19	ASP	3.6
1	A	173	ILE	3.5
1	A	2	THR	3.4
1	A	4	GLY	3.3

Continued on next page...

Continued from previous page...

Mol	Chain	Res	Type	RSRZ
1	A	12	ASN	3.2
1	A	110	PRO	3.2
1	A	172	ASP	3.2
1	A	3	THR	3.2
1	A	224	LEU	3.0
1	A	108	GLN	3.0
1	A	140	LEU	2.8
1	A	300	GLY	2.8
1	A	156	ILE	2.8
1	A	240	ASN	2.8
1	A	265	LEU	2.7
1	A	295	ASN	2.7
1	A	1	ASN	2.6
1	A	99	GLU	2.4
1	A	299	ASP	2.3
1	A	223	TYR	2.2
1	A	169	VAL	2.2
1	A	283	TRP	2.1
1	A	309	TRP	2.1
1	A	98	SER	2.0
1	A	43	VAL	2.0

6.2 Non-standard residues in protein, DNA, RNA chains [i](#)

There are no non-standard protein/DNA/RNA residues in this entry.

6.3 Carbohydrates [i](#)

There are no monosaccharides in this entry.

6.4 Ligands [i](#)

In the following table, the Atoms column lists the number of modelled atoms in the group and the number defined in the chemical component dictionary. The B-factors column lists the minimum, median, 95th percentile and maximum values of B factors of atoms in the group. The column labelled 'Q< 0.9' lists the number of atoms with occupancy less than 0.9.

Mol	Type	Chain	Res	Atoms	RSCC	RSR	B-factors(\AA^2)	Q<0.9
4	OIN	A	1317	21/21	0.63	0.36	62,70,75,78	0
2	CHT	A	1322	7/7	0.71	0.30	50,51,56,58	0

Continued on next page...

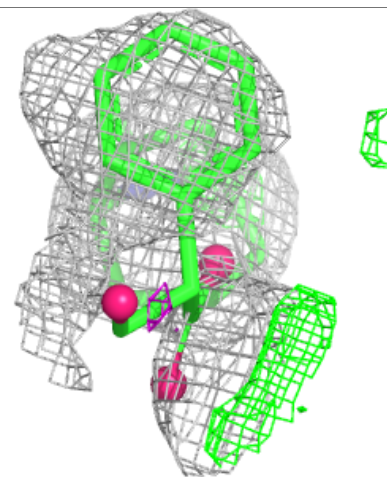
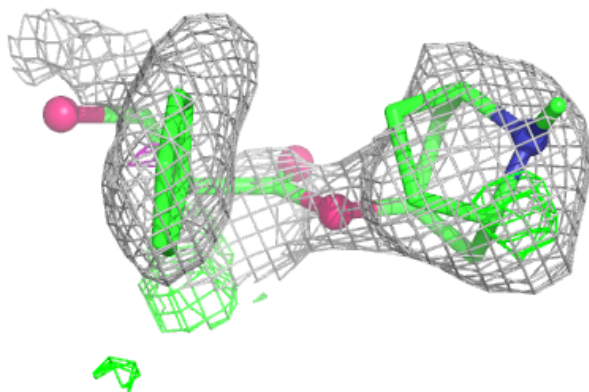
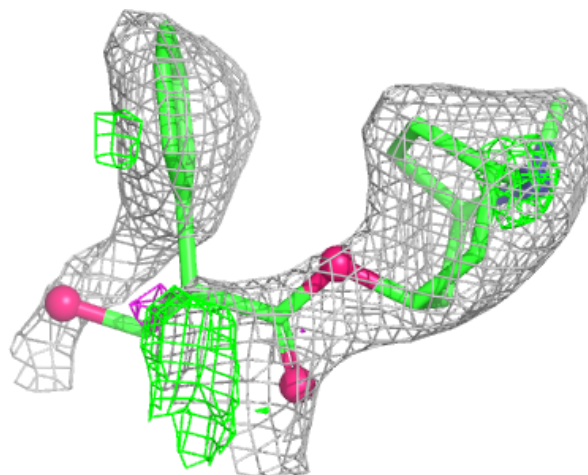
Continued from previous page...

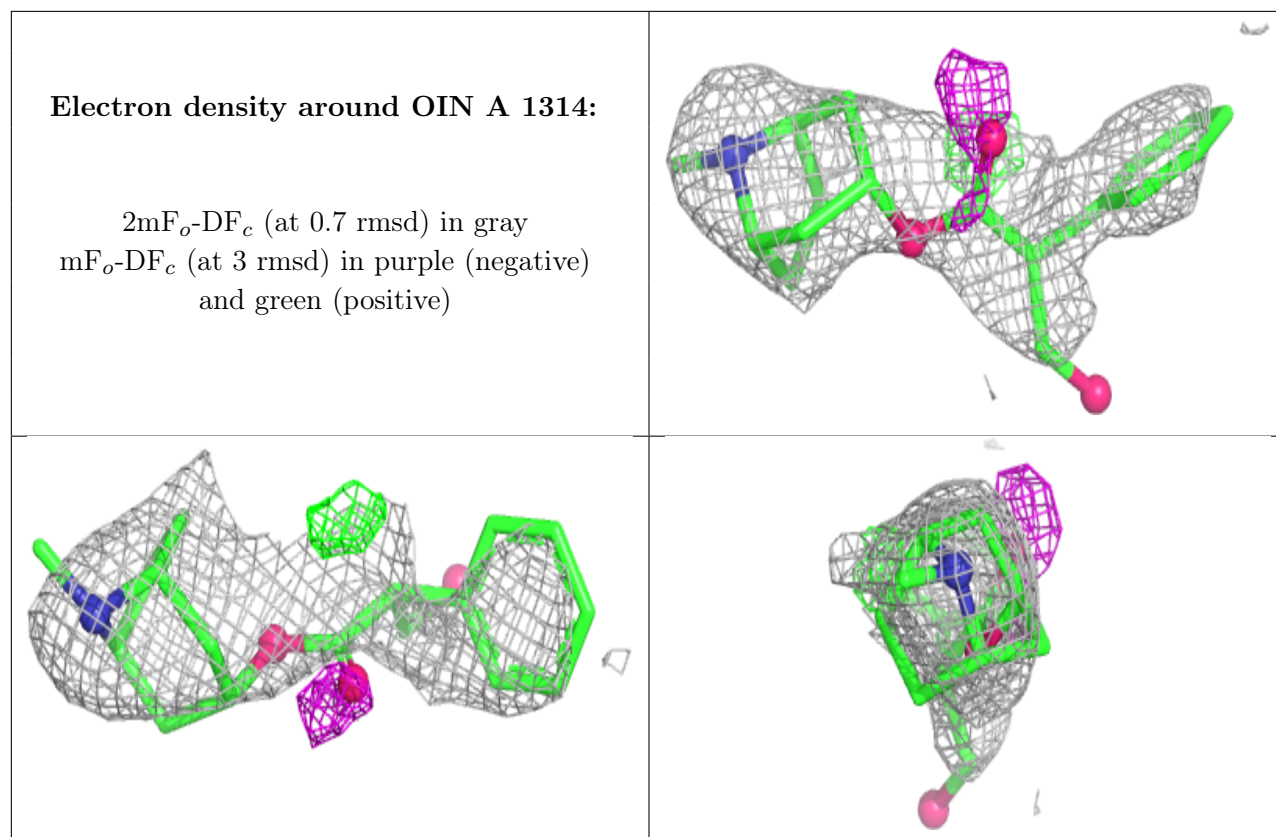
Mol	Type	Chain	Res	Atoms	RSCC	RSR	B-factors(Å ²)	Q<0.9
5	GOL	A	1316	6/6	0.71	0.34	64,66,67,68	0
2	CHT	A	1318	7/7	0.72	0.33	53,54,59,63	0
4	OIN	A	1314	21/21	0.72	0.48	83,86,88,88	0
2	CHT	A	1324	7/7	0.73	0.32	48,49,54,54	0
5	GOL	A	1315	6/6	0.76	0.18	50,51,53,54	0
5	GOL	A	1321	6/6	0.81	0.26	65,65,66,68	0
5	GOL	A	1320	6/6	0.83	0.23	46,52,54,56	0
2	CHT	A	1312	7/7	0.83	0.25	40,43,46,48	0
2	CHT	A	1323	7/7	0.85	0.27	50,52,55,57	0
2	CHT	A	1319	7/7	0.88	0.30	83,84,85,85	0
3	SO4	A	1313	5/5	0.93	0.19	61,61,61,64	0

The following is a graphical depiction of the model fit to experimental electron density of all instances of the Ligand of Interest. In addition, ligands with molecular weight > 250 and outliers as shown on the geometry validation Tables will also be included. Each fit is shown from different orientation to approximate a three-dimensional view.

Electron density around OIN A 1317:

2mF_o-DF_c (at 0.7 rmsd) in gray
mF_o-DF_c (at 3 rmsd) in purple (negative)
and green (positive)





6.5 Other polymers [i](#)

There are no such residues in this entry.