



wwPDB EM Validation Summary Report ⓘ

Oct 14, 2024 – 07:26 PM JST

PDB ID : 7X1T
EMDB ID : EMD-32949
Title : Structure of Thyrotropin-Releasing Hormone Receptor bound with Taltirelin.
Authors : Yang, F.; Zhang, H.H.; Meng, X.Y.; Li, Y.G.; Zhou, Y.X.; Ling, S.L.; Liu, L.; Shi, P.; Tian, C.L.
Deposited on : 2022-02-24
Resolution : 3.26 Å(reported)

This is a wwPDB EM Validation Summary Report for a publicly released PDB entry.

We welcome your comments at validation@mail.wwpdb.org

A user guide is available at

<https://www.wwpdb.org/validation/2017/EMValidationReportHelp>
with specific help available everywhere you see the ⓘ symbol.

The types of validation reports are described at

<http://www.wwpdb.org/validation/2017/FAQs#types>.

The following versions of software and data (see [references ⓘ](#)) were used in the production of this report:

EMDB validation analysis : 0.0.1.dev113
Mogul : 1.8.5 (274361), CSD as541be (2020)
MolProbity : 4.02b-467
Percentile statistics : 20231227.v01 (using entries in the PDB archive December 27th 2023)
MapQ : 1.9.13
Ideal geometry (proteins) : Engh & Huber (2001)
Ideal geometry (DNA, RNA) : Parkinson et al. (1996)
Validation Pipeline (wwPDB-VP) : 2.39

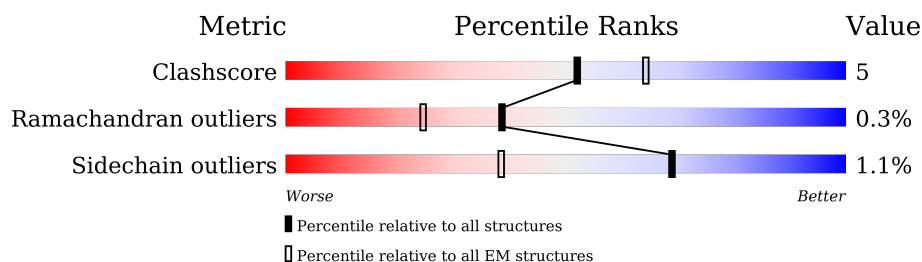
1 Overall quality at a glance

The following experimental techniques were used to determine the structure:

ELECTRON MICROSCOPY

The reported resolution of this entry is 3.26 Å.

Percentile scores (ranging between 0-100) for global validation metrics of the entry are shown in the following graphic. The table shows the number of entries on which the scores are based.



Metric	Whole archive (#Entries)	EM structures (#Entries)
Clashscore	210492	15764
Ramachandran outliers	207382	16835
Sidechain outliers	206894	16415

The table below summarises the geometric issues observed across the polymeric chains and their fit to the map. The red, orange, yellow and green segments of the bar indicate the fraction of residues that contain outliers for ≥ 3 , 2, 1 and 0 types of geometric quality criteria respectively. A grey segment represents the fraction of residues that are not modelled. The numeric value for each fraction is indicated below the corresponding segment, with a dot representing fractions $\leq 5\%$. The upper red bar (where present) indicates the fraction of residues that have poor fit to the EM map (all-atom inclusion $< 40\%$). The numeric value is given above the bar.

Mol	Chain	Length	Quality of chain
1	F	71	<div> <div>37%</div> <div>68%</div> <div>31%</div> </div>
2	A	398	<div> <div>9%</div> <div>64%</div> <div>32%</div> </div>
3	B	246	<div> <div>16%</div> <div>76%</div> <div>13%</div> <div>11%</div> </div>
4	C	340	<div> <div>9%</div> <div>80%</div> <div>16%</div> </div>
5	D	251	<div> <div>20%</div> <div>74%</div> <div>10%</div> <div>17%</div> </div>
6	E	5	<div> <div>40%</div> <div>20%</div> <div>20%</div> <div>60%</div> </div>

2 Entry composition

There are 6 unique types of molecules in this entry. The entry contains 7488 atoms, of which 0 are hydrogens and 0 are deuteriums.

In the tables below, the AltConf column contains the number of residues with at least one atom in alternate conformation and the Trace column contains the number of residues modelled with at most 2 atoms.

- Molecule 1 is a protein called Guanine nucleotide-binding protein G(I)/G(S)/G(O) subunit gamma-2.

Mol	Chain	Residues	Atoms					AltConf	Trace
1	F	49	Total	C	N	O	S	0	0
			299	190	52	55	2		

There is a discrepancy between the modelled and reference sequences:

Chain	Residue	Modelled	Actual	Comment	Reference
F	68	SER	CYS	conflict	UNP P63212

- Molecule 2 is a protein called Thyrotropin-releasing hormone receptor.

Mol	Chain	Residues	Atoms					AltConf	Trace
2	A	272	Total	C	N	O	S	0	0
			1958	1301	318	327	12		

There is a discrepancy between the modelled and reference sequences:

Chain	Residue	Modelled	Actual	Comment	Reference
A	87	LEU	ILE	conflict	UNP P34981

- Molecule 3 is a protein called mini-G alpha q protein.

Mol	Chain	Residues	Atoms					AltConf	Trace
3	B	218	Total	C	N	O	S	0	0
			1578	1010	280	282	6		

- Molecule 4 is a protein called Guanine nucleotide-binding protein G(I)/G(S)/G(T) subunit beta-1.

Mol	Chain	Residues	Atoms					AltConf	Trace
4	C	330	Total	C	N	O	S	0	0
			2288	1436	393	441	18		

- Molecule 5 is a protein called ScFv16.

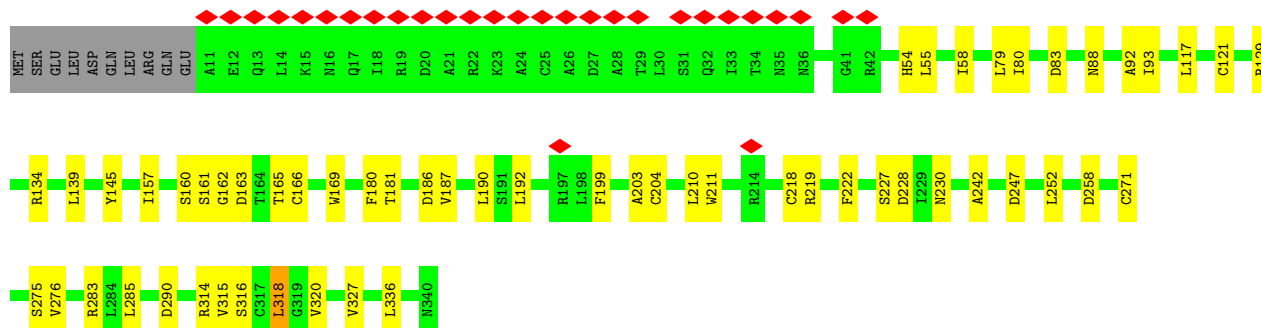
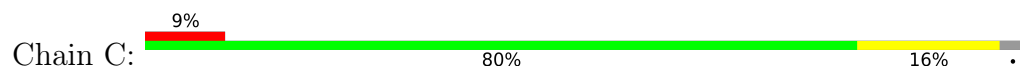
Mol	Chain	Residues	Atoms					AltConf	Trace
5	D	209	Total	C	N	O	S	0	0
			1336	836	232	263	5		

- Molecule 6 is a protein called Taltirelin.

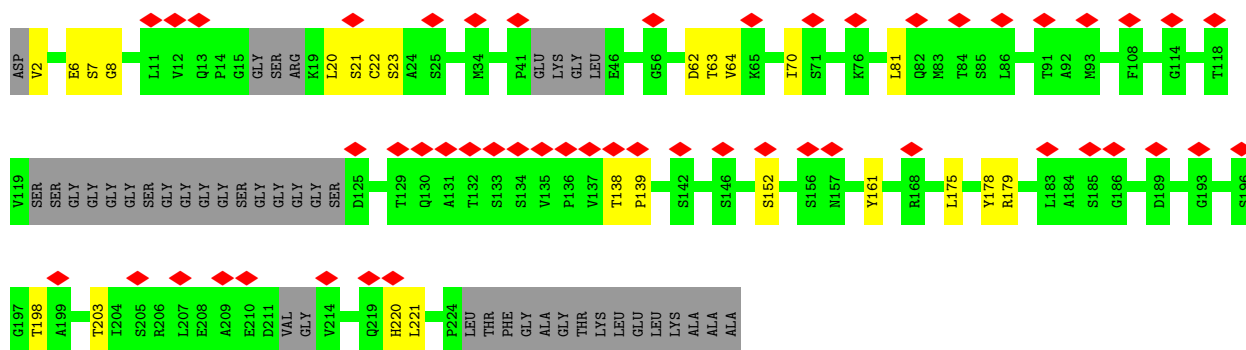
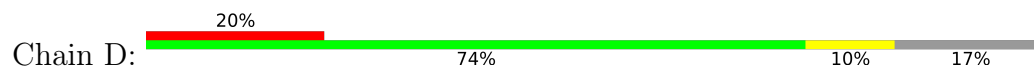
Mol	Chain	Residues	Atoms				AltConf	Trace
6	E	5	Total	C	N	O	0	1
			29	17	7	5		



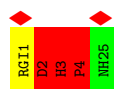
- Molecule 4: Guanine nucleotide-binding protein G(I)/G(S)/G(T) subunit beta-1



- Molecule 5: ScFv16



- Molecule 6: Taltirelin



4 Experimental information

Property	Value	Source
EM reconstruction method	SINGLE PARTICLE	Depositor
Imposed symmetry	POINT, Not provided	
Number of particles used	394270	Depositor
Resolution determination method	FSC 0.143 CUT-OFF	Depositor
CTF correction method	PHASE FLIPPING AND AMPLITUDE CORRECTION	Depositor
Microscope	FEI TITAN KRIOS	Depositor
Voltage (kV)	300	Depositor
Electron dose ($e^-/\text{\AA}^2$)	55	Depositor
Minimum defocus (nm)	1200	Depositor
Maximum defocus (nm)	2200	Depositor
Magnification	Not provided	
Image detector	GATAN K3 (6k x 4k)	Depositor
Maximum map value	3.714	Depositor
Minimum map value	-2.471	Depositor
Average map value	0.003	Depositor
Map value standard deviation	0.092	Depositor
Recommended contour level	0.52	Depositor
Map size (Å)	214.00002, 214.00002, 214.00002	wwPDB
Map dimensions	200, 200, 200	wwPDB
Map angles (°)	90.0, 90.0, 90.0	wwPDB
Pixel spacing (Å)	1.07, 1.07, 1.07	Depositor

5 Model quality

5.1 Standard geometry

Bond lengths and bond angles in the following residue types are not validated in this section: NH2, RGI

The Z score for a bond length (or angle) is the number of standard deviations the observed value is removed from the expected value. A bond length (or angle) with $|Z| > 5$ is considered an outlier worth inspection. RMSZ is the root-mean-square of all Z scores of the bond lengths (or angles).

Mol	Chain	Bond lengths		Bond angles	
		RMSZ	$\# Z > 5$	RMSZ	$\# Z > 5$
1	F	0.26	0/304	0.49	0/423
2	A	0.29	0/1998	0.54	0/2741
3	B	0.29	0/1604	0.50	0/2181
4	C	0.30	0/2331	0.59	2/3193 (0.1%)
5	D	0.32	0/1361	0.64	0/1870
6	E	3.59	3/25 (12.0%)	1.94	1/33 (3.0%)
All	All	0.36	3/7623 (0.0%)	0.57	3/10441 (0.0%)

Chiral center outliers are detected by calculating the chiral volume of a chiral center and verifying if the center is modelled as a planar moiety or with the opposite hand. A planarity outlier is detected by checking planarity of atoms in a peptide group, atoms in a mainchain group or atoms of a sidechain that are expected to be planar.

Mol	Chain	#Chirality outliers	#Planarity outliers
2	A	0	1
6	E	2	0
All	All	2	1

All (3) bond length outliers are listed below:

Mol	Chain	Res	Type	Atoms	Z	Observed(Å)	Ideal(Å)
6	E	4	PRO	N-CD	-8.74	1.35	1.47
6	E	3	HIS	C-N	8.12	1.49	1.34
6	E	2	ASP	C-N	6.49	1.49	1.34

All (3) bond angle outliers are listed below:

Mol	Chain	Res	Type	Atoms	Z	Observed(°)	Ideal(°)
4	C	318	LEU	CA-CB-CG	5.41	127.75	115.30
4	C	336	LEU	CA-CB-CG	5.35	127.61	115.30

Continued on next page...

Continued from previous page...

Mol	Chain	Res	Type	Atoms	Z	Observed(°)	Ideal(°)
6	E	2	ASP	N-CA-CB	5.23	120.02	110.60

All (2) chirality outliers are listed below:

Mol	Chain	Res	Type	Atom
6	E	3	HIS	CA
6	E	4	PRO	CA

All (1) planarity outliers are listed below:

Mol	Chain	Res	Type	Group
2	A	80	LEU	Peptide

5.2 Too-close contacts [i](#)

In the following table, the Non-H and H(model) columns list the number of non-hydrogen atoms and hydrogen atoms in the chain respectively. The H(added) column lists the number of hydrogen atoms added and optimized by MolProbity. The Clashes column lists the number of clashes within the asymmetric unit, whereas Symm-Clashes lists symmetry-related clashes.

Mol	Chain	Non-H	H(model)	H(added)	Clashes	Symm-Clashes
1	F	299	0	243	1	0
2	A	1958	0	1881	9	0
3	B	1578	0	1421	20	0
4	C	2288	0	2040	33	0
5	D	1336	0	1043	15	0
6	E	29	0	20	1	0
All	All	7488	0	6648	74	0

The all-atom clashscore is defined as the number of clashes found per 1000 atoms (including hydrogen atoms). The all-atom clashscore for this structure is 5.

The worst 5 of 74 close contacts within the same asymmetric unit are listed below, sorted by their clash magnitude.

Atom-1	Atom-2	Interatomic distance (Å)	Clash overlap (Å)
2:A:123:ARG:NH1	2:A:211:TYR:OH	2.31	0.63
5:D:63:THR:HG23	5:D:64:VAL:HG23	1.81	0.62
4:C:320:VAL:HG22	4:C:327:VAL:HG22	1.86	0.58
4:C:157:ILE:HG23	4:C:169:TRP:HB2	1.86	0.57
3:B:19:ILE:HG23	4:C:92:ALA:HB2	1.87	0.56

There are no symmetry-related clashes.

5.3 Torsion angles [i](#)

5.3.1 Protein backbone [i](#)

In the following table, the Percentiles column shows the percent Ramachandran outliers of the chain as a percentile score with respect to all PDB entries followed by that with respect to all EM entries.

The Analysed column shows the number of residues for which the backbone conformation was analysed, and the total number of residues.

Mol	Chain	Analysed	Favoured	Allowed	Outliers	Percentiles	
1	F	47/71 (66%)	42 (89%)	5 (11%)	0	100	100
2	A	268/398 (67%)	256 (96%)	12 (4%)	0	100	100
3	B	210/246 (85%)	197 (94%)	13 (6%)	0	100	100
4	C	328/340 (96%)	299 (91%)	29 (9%)	0	100	100
5	D	199/251 (79%)	164 (82%)	35 (18%)	0	100	100
6	E	3/5 (60%)	0	0	3 (100%)	0	0
All	All	1055/1311 (80%)	958 (91%)	94 (9%)	3 (0%)	38	66

All (3) Ramachandran outliers are listed below:

Mol	Chain	Res	Type
6	E	2	ASP
6	E	3	HIS
6	E	4	PRO

5.3.2 Protein sidechains [i](#)

In the following table, the Percentiles column shows the percent sidechain outliers of the chain as a percentile score with respect to all PDB entries followed by that with respect to all EM entries.

The Analysed column shows the number of residues for which the sidechain conformation was analysed, and the total number of residues.

Mol	Chain	Analysed	Rotameric	Outliers	Percentiles	
1	F	19/58 (33%)	19 (100%)	0	100	100
2	A	183/363 (50%)	182 (100%)	1 (0%)	86	90

Continued on next page...

Continued from previous page...

Mol	Chain	Analysed	Rotameric	Outliers	Percentiles	
3	B	139/213 (65%)	139 (100%)	0	100	100
4	C	210/283 (74%)	206 (98%)	4 (2%)	52	71
5	D	101/201 (50%)	101 (100%)	0	100	100
6	E	3/3 (100%)	1 (33%)	2 (67%)	0	0
All	All	655/1121 (58%)	648 (99%)	7 (1%)	69	81

5 of 7 residues with a non-rotameric sidechain are listed below:

Mol	Chain	Res	Type
4	C	315	VAL
4	C	318	LEU
6	E	3	HIS
6	E	2	ASP
4	C	190	LEU

Sometimes sidechains can be flipped to improve hydrogen bonding and reduce clashes. 5 of 6 such sidechains are listed below:

Mol	Chain	Res	Type
4	C	32	GLN
4	C	62	HIS
5	D	159	ASN
2	A	312	ASN
2	A	105	GLN

5.3.3 RNA ⓘ

There are no RNA molecules in this entry.

5.4 Non-standard residues in protein, DNA, RNA chains ⓘ

1 non-standard protein/DNA/RNA residue is modelled in this entry.

In the following table, the Counts columns list the number of bonds (or angles) for which Mogul statistics could be retrieved, the number of bonds (or angles) that are observed in the model and the number of bonds (or angles) that are defined in the Chemical Component Dictionary. The Link column lists molecule types, if any, to which the group is linked. The Z score for a bond length (or angle) is the number of standard deviations the observed value is removed from the expected value. A bond length (or angle) with $|Z| > 2$ is considered an outlier worth inspection. RMSZ is the root-mean-square of all Z scores of the bond lengths (or angles).

Mol	Type	Chain	Res	Link	Bond lengths			Bond angles		
					Counts	RMSZ	# Z > 2	Counts	RMSZ	# Z > 2
6	RGI	E	1	6	3,3,4	1.89	1 (33%)	2,2,4	0.25	0

In the following table, the Chirals column lists the number of chiral outliers, the number of chiral centers analysed, the number of these observed in the model and the number defined in the Chemical Component Dictionary. Similar counts are reported in the Torsion and Rings columns. '-' means no outliers of that kind were identified.

Mol	Type	Chain	Res	Link	Chirals	Torsions	Rings
6	RGI	E	1	6	-	0/1/1/2	-

All (1) bond length outliers are listed below:

Mol	Chain	Res	Type	Atoms	Z	Observed(Å)	Ideal(Å)
6	E	1	RGI	C-N	2.66	1.49	1.34

There are no bond angle outliers.

There are no chirality outliers.

There are no torsion outliers.

There are no ring outliers.

No monomer is involved in short contacts.

5.5 Carbohydrates [i](#)

There are no oligosaccharides in this entry.

5.6 Ligand geometry [i](#)

There are no ligands in this entry.

5.7 Other polymers [i](#)

There are no such residues in this entry.

5.8 Polymer linkage issues [i](#)

There are no chain breaks in this entry.

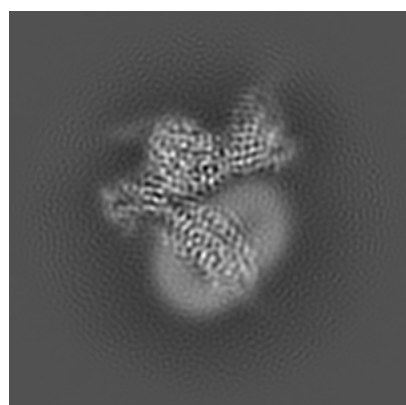
6 Map visualisation [i](#)

This section contains visualisations of the EMDB entry EMD-32949. These allow visual inspection of the internal detail of the map and identification of artifacts.

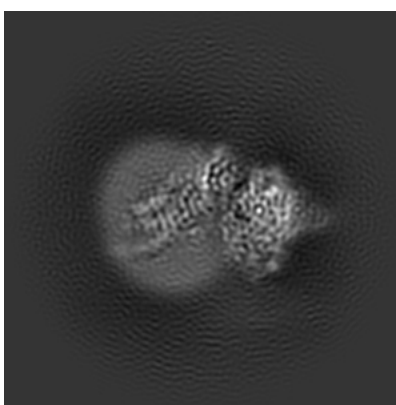
No raw map or half-maps were deposited for this entry and therefore no images, graphs, etc. pertaining to the raw map can be shown.

6.1 Orthogonal projections [i](#)

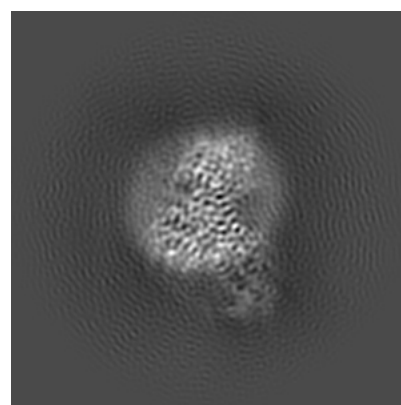
6.1.1 Primary map



X



Y

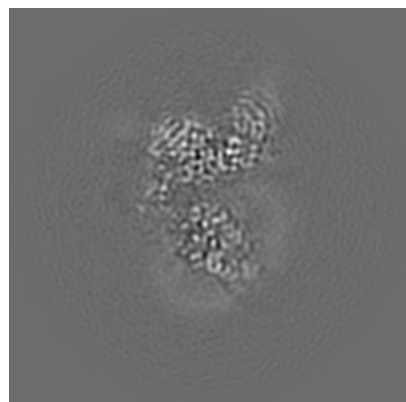


Z

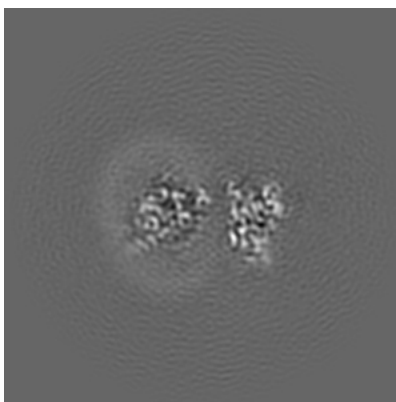
The images above show the map projected in three orthogonal directions.

6.2 Central slices [i](#)

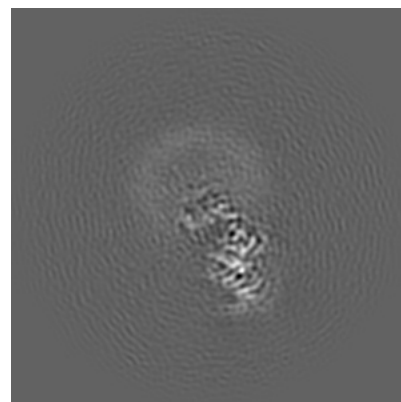
6.2.1 Primary map



X Index: 100



Y Index: 100

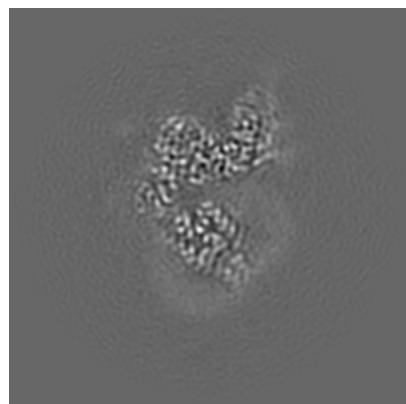


Z Index: 100

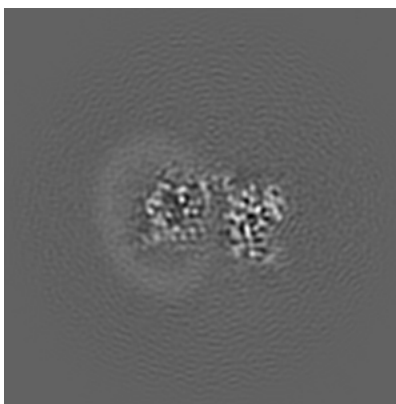
The images above show central slices of the map in three orthogonal directions.

6.3 Largest variance slices [i](#)

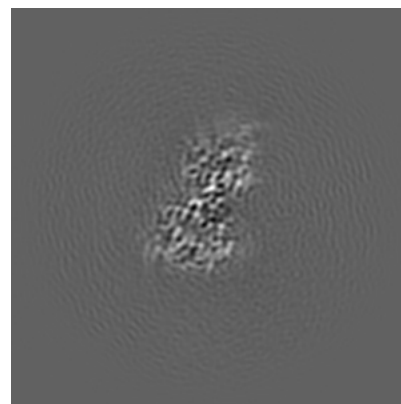
6.3.1 Primary map



X Index: 103



Y Index: 96

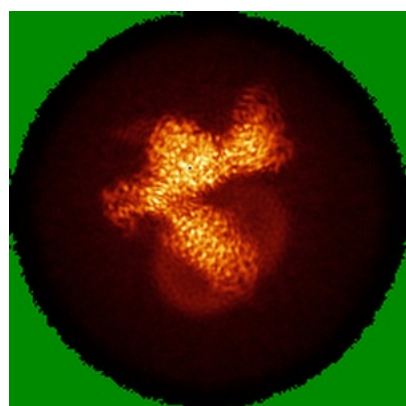


Z Index: 128

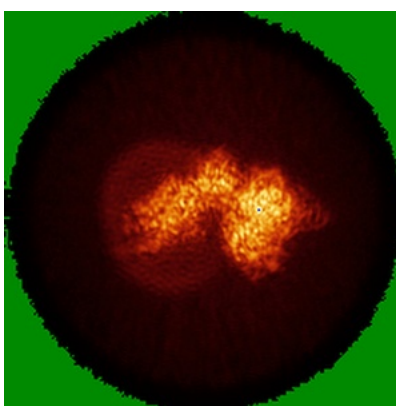
The images above show the largest variance slices of the map in three orthogonal directions.

6.4 Orthogonal standard-deviation projections (False-color) [i](#)

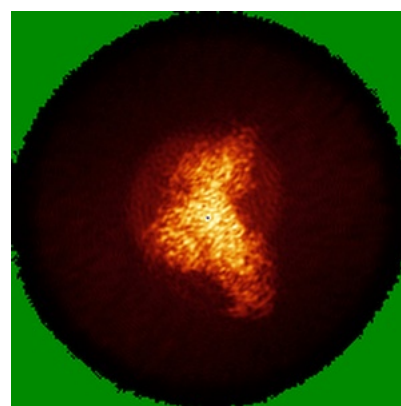
6.4.1 Primary map



X



Y

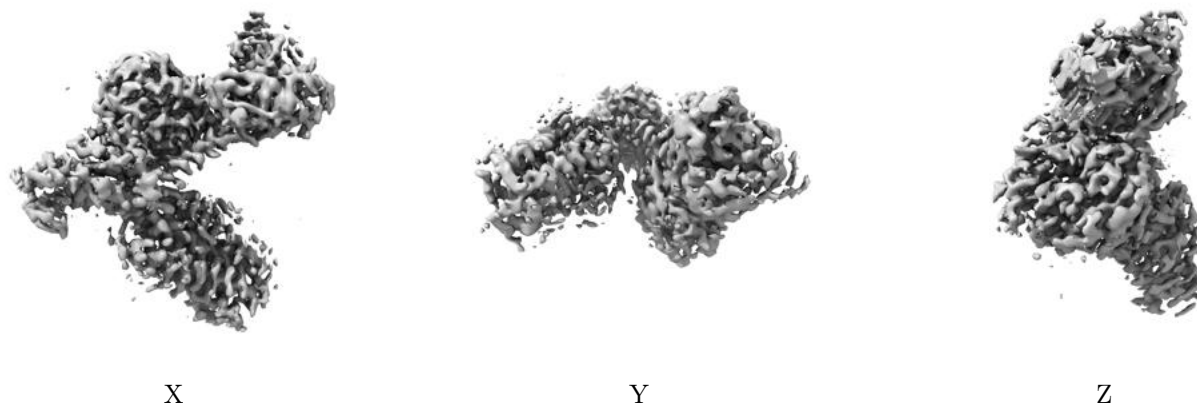


Z

The images above show the map standard deviation projections with false color in three orthogonal directions. Minimum values are shown in green, max in blue, and dark to light orange shades represent small to large values respectively.

6.5 Orthogonal surface views [i](#)

6.5.1 Primary map



The images above show the 3D surface view of the map at the recommended contour level 0.52. These images, in conjunction with the slice images, may facilitate assessment of whether an appropriate contour level has been provided.

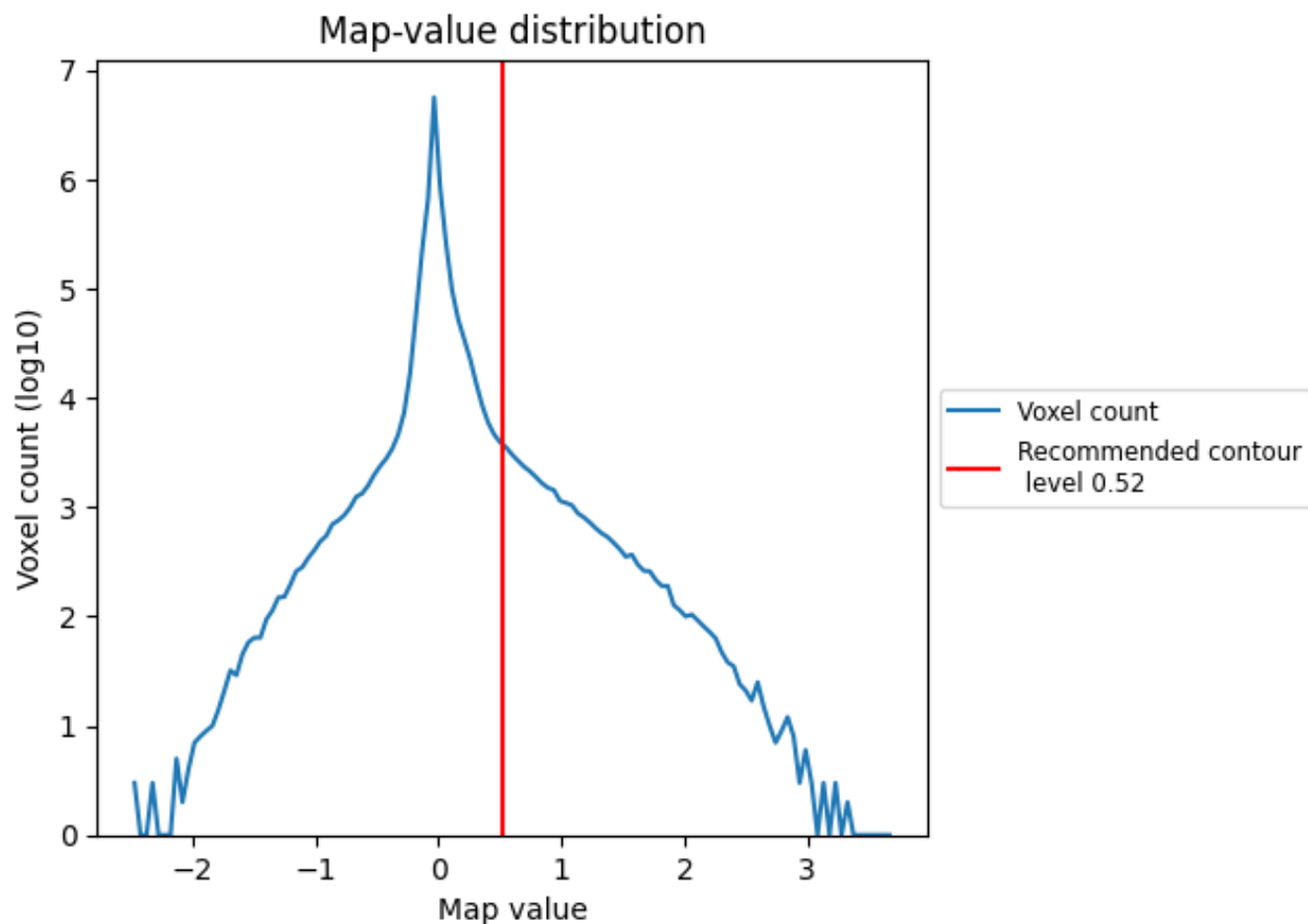
6.6 Mask visualisation [i](#)

This section was not generated. No masks/segmentation were deposited.

7 Map analysis [i](#)

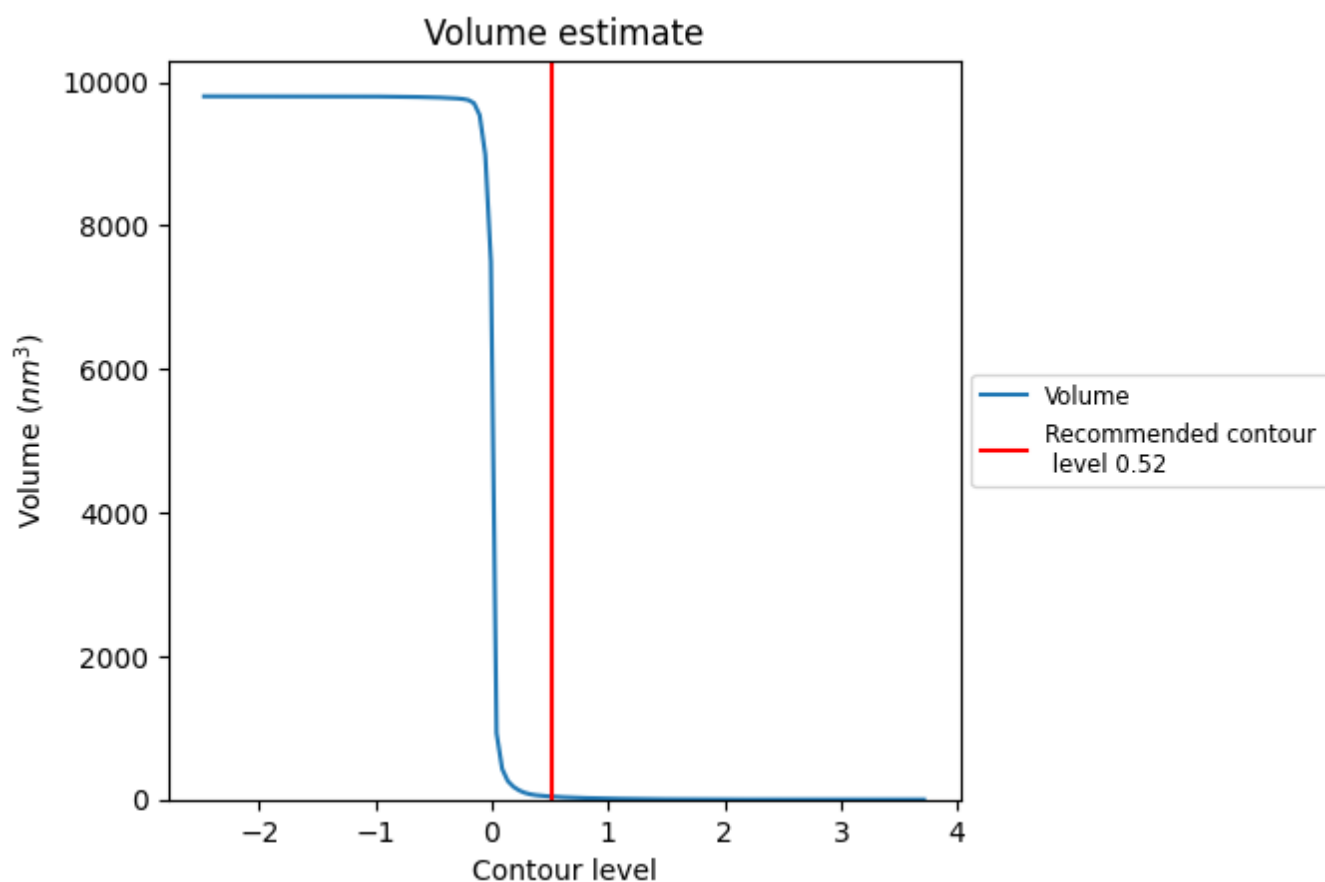
This section contains the results of statistical analysis of the map.

7.1 Map-value distribution [i](#)



The map-value distribution is plotted in 128 intervals along the x-axis. The y-axis is logarithmic. A spike in this graph at zero usually indicates that the volume has been masked.

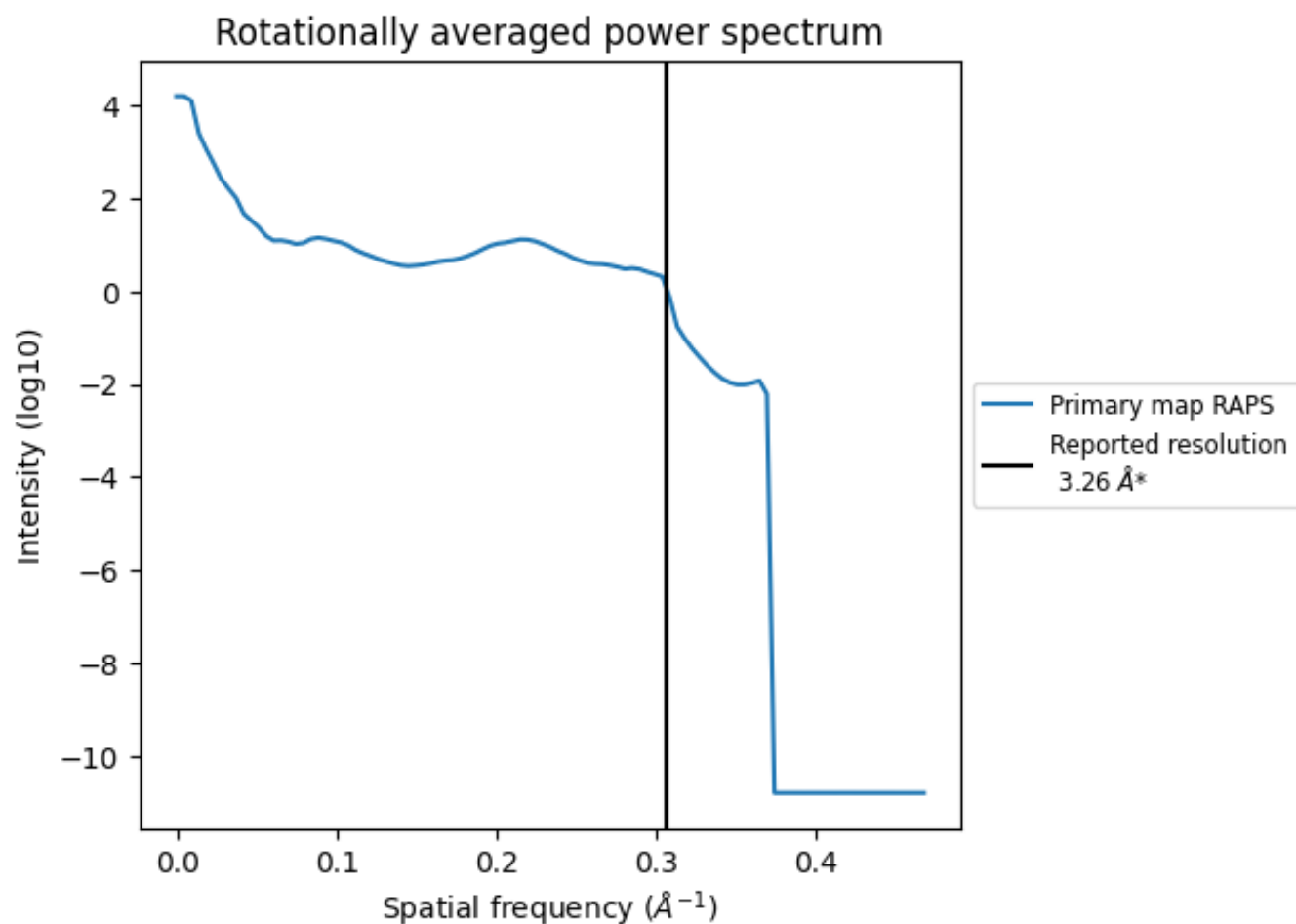
7.2 Volume estimate [i](#)



The volume at the recommended contour level is 42 nm³; this corresponds to an approximate mass of 38 kDa.

The volume estimate graph shows how the enclosed volume varies with the contour level. The recommended contour level is shown as a vertical line and the intersection between the line and the curve gives the volume of the enclosed surface at the given level.

7.3 Rotationally averaged power spectrum ⓘ



*Reported resolution corresponds to spatial frequency of 0.307 Å⁻¹

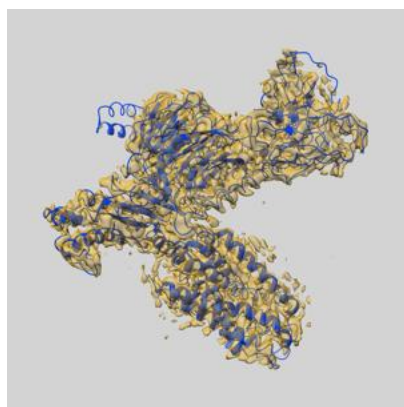
8 Fourier-Shell correlation

This section was not generated. No FSC curve or half-maps provided.

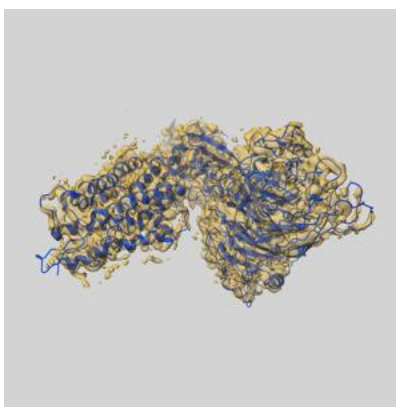
9 Map-model fit [i](#)

This section contains information regarding the fit between EMDB map EMD-32949 and PDB model 7X1T. Per-residue inclusion information can be found in section [3](#) on page [5](#).

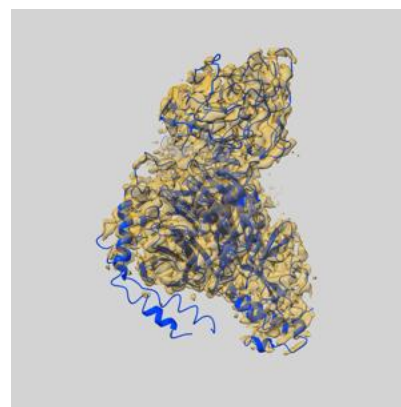
9.1 Map-model overlay [i](#)



X



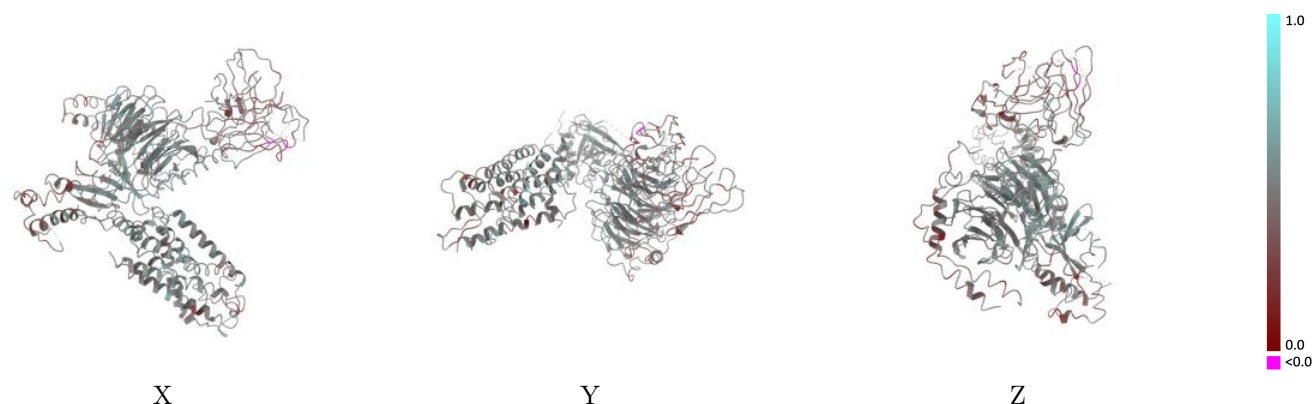
Y



Z

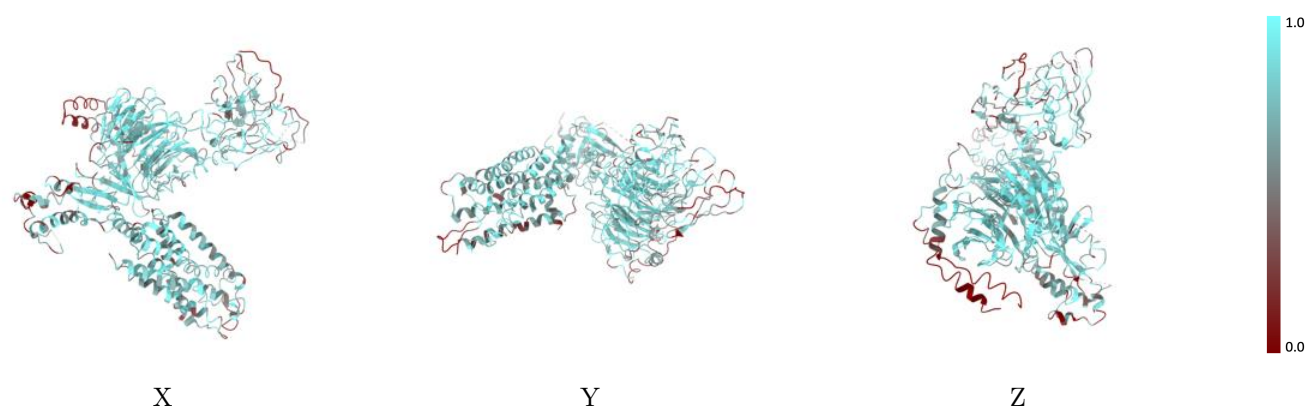
The images above show the 3D surface view of the map at the recommended contour level 0.52 at 50% transparency in yellow overlaid with a ribbon representation of the model coloured in blue. These images allow for the visual assessment of the quality of fit between the atomic model and the map.

9.2 Q-score mapped to coordinate model [i](#)



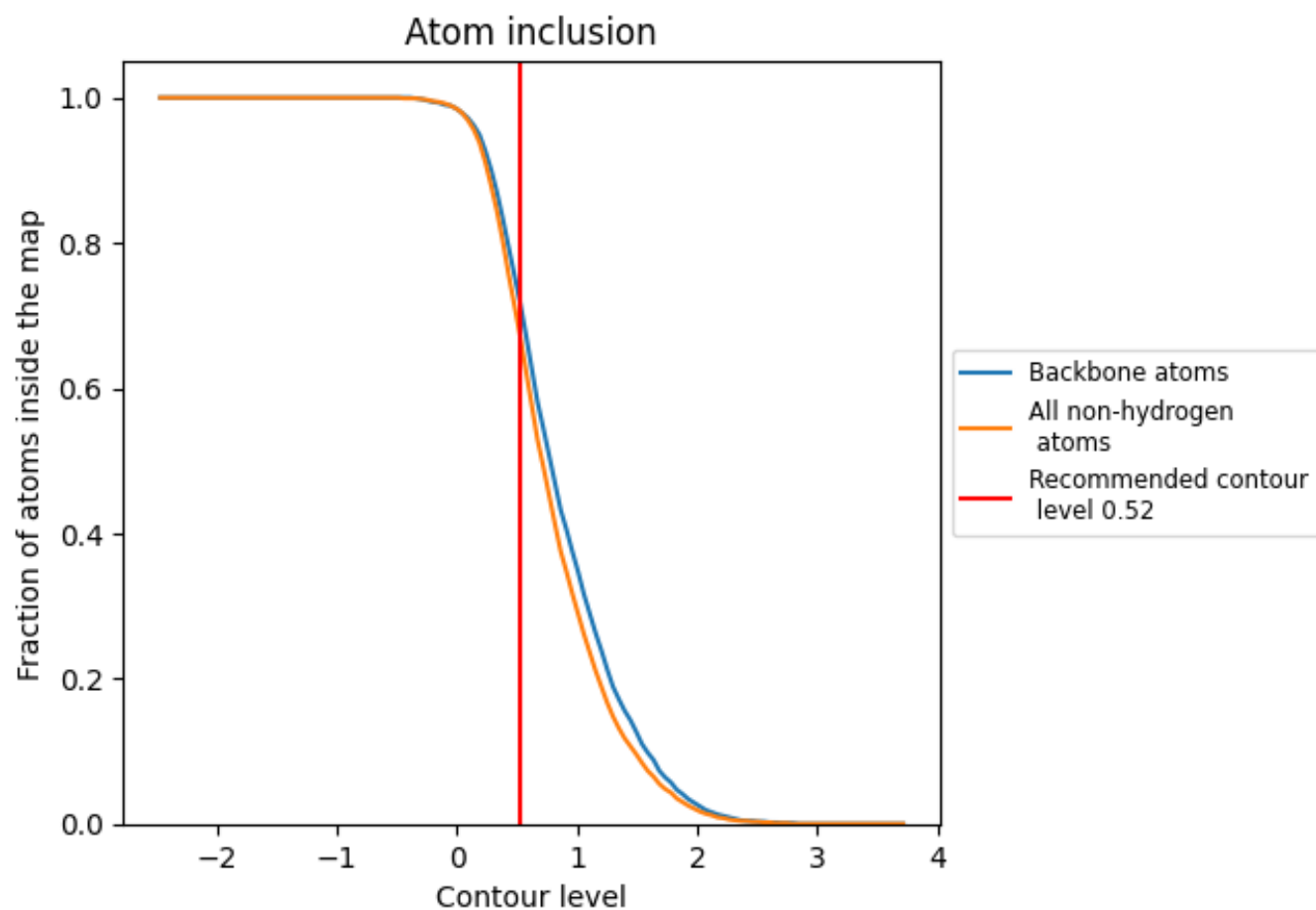
The images above show the model with each residue coloured according to its Q-score. This shows their resolvability in the map with higher Q-score values reflecting better resolvability. Please note: Q-score is calculating the resolvability of atoms, and thus high values are only expected at resolutions at which atoms can be resolved. Low Q-score values may therefore be expected for many entries.

9.3 Atom inclusion mapped to coordinate model [i](#)



The images above show the model with each residue coloured according to its atom inclusion. This shows to what extent they are inside the map at the recommended contour level (0.52).

9.4 Atom inclusion [i](#)



At the recommended contour level, 72% of all backbone atoms, 68% of all non-hydrogen atoms, are inside the map.

9.5 Map-model fit summary ⓘ

The table lists the average atom inclusion at the recommended contour level (0.52) and Q-score for the entire model and for each chain.

Chain	Atom inclusion	Q-score
All	<div><div></div>0.6770</div>	<div><div></div>0.4620</div>
A	<div><div></div>0.6650</div>	<div><div></div>0.4750</div>
B	<div><div></div>0.6770</div>	<div><div></div>0.4680</div>
C	<div><div></div>0.7590</div>	<div><div></div>0.4940</div>
D	<div><div></div>0.6160</div>	<div><div></div>0.4000</div>
E	<div><div></div>0.7240</div>	<div><div></div>0.4210</div>
F	<div><div></div>0.3930</div>	<div><div></div>0.3930</div>

1.0

0.0

<0.0