



wwPDB X-ray Structure Validation Summary Report ⓘ

Jun 17, 2024 – 01:11 PM EDT

PDB ID : 2X01
Title : CRYSTAL STRUCTURE OF THE OXA-10 S67A MUTANT AT PH 7
Authors : Vercheval, L.; Kerff, F.; Bauvois, C.; Sauvage, E.; Guet, R.; Galleni, M.; Charlier, P.
Deposited on : 2009-12-04
Resolution : 1.90 Å(reported)

This is a wwPDB X-ray Structure Validation Summary Report for a publicly released PDB entry.

We welcome your comments at validation@mail.wwpdb.org

A user guide is available at

<https://www.wwpdb.org/validation/2017/XrayValidationReportHelp>

with specific help available everywhere you see the ⓘ symbol.

The types of validation reports are described at

<http://www.wwpdb.org/validation/2017/FAQs#types>.

The following versions of software and data (see [references ⓘ](#)) were used in the production of this report:

MolProbity	:	4.02b-467
Mogul	:	2022.3.0, CSD as543be (2022)
Xtriage (Phenix)	:	1.20.1
EDS	:	2.37.1
Percentile statistics	:	20191225.v01 (using entries in the PDB archive December 25th 2019)
Refmac	:	5.8.0158
CCP4	:	7.0.044 (Gargrove)
Ideal geometry (proteins)	:	Engh & Huber (2001)
Ideal geometry (DNA, RNA)	:	Parkinson et al. (1996)
Validation Pipeline (wwPDB-VP)	:	2.37.1

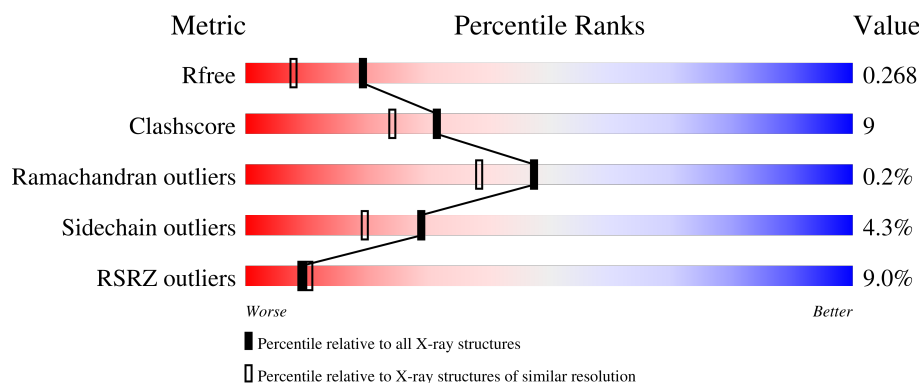
1 Overall quality at a glance

The following experimental techniques were used to determine the structure:

X-RAY DIFFRACTION

The reported resolution of this entry is 1.90 Å.

Percentile scores (ranging between 0-100) for global validation metrics of the entry are shown in the following graphic. The table shows the number of entries on which the scores are based.



Metric	Whole archive (#Entries)	Similar resolution (#Entries, resolution range(Å))
R_{free}	130704	6207 (1.90-1.90)
Clashscore	141614	6847 (1.90-1.90)
Ramachandran outliers	138981	6760 (1.90-1.90)
Sidechain outliers	138945	6760 (1.90-1.90)
RSRZ outliers	127900	6082 (1.90-1.90)

The table below summarises the geometric issues observed across the polymeric chains and their fit to the electron density. The red, orange, yellow and green segments of the lower bar indicate the fraction of residues that contain outliers for ≥ 3 , 2, 1 and 0 types of geometric quality criteria respectively. A grey segment represents the fraction of residues that are not modelled. The numeric value for each fraction is indicated below the corresponding segment, with a dot representing fractions $\leq 5\%$. The upper red bar (where present) indicates the fraction of residues that have poor fit to the electron density. The numeric value is given above the bar.

Mol	Chain	Length	Quality of chain
1	A	249	
1	B	249	

The following table lists non-polymeric compounds, carbohydrate monomers and non-standard residues in protein, DNA, RNA chains that are outliers for geometric or electron-density-fit criteria:

Mol	Type	Chain	Res	Chirality	Geometry	Clashes	Electron density
3	DMS	A	1271	-	-	X	-
3	DMS	B	1268	-	-	X	-

2 Entry composition [i](#)

There are 5 unique types of molecules in this entry. The entry contains 4149 atoms, of which 0 are hydrogens and 0 are deuteriums.

In the tables below, the ZeroOcc column contains the number of atoms modelled with zero occupancy, the AltConf column contains the number of residues with at least one atom in alternate conformation and the Trace column contains the number of residues modelled with at most 2 atoms.

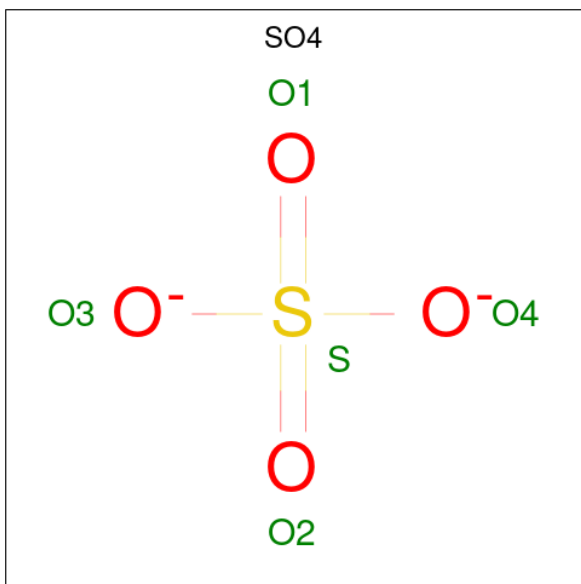
- Molecule 1 is a protein called BETA-LACTAMASE OXA-10.

Mol	Chain	Residues	Atoms					ZeroOcc	AltConf	Trace
1	A	244	Total	C	N	O	S	0	2	0
			1948	1247	327	368	6			
1	B	246	Total	C	N	O	S	0	1	0
			1954	1250	328	369	7			

There are 4 discrepancies between the modelled and reference sequences:

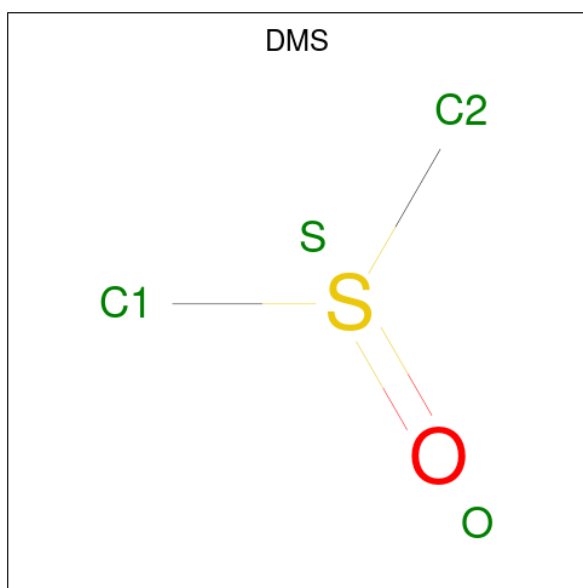
Chain	Residue	Modelled	Actual	Comment	Reference
A	67	ALA	SER	engineered mutation	UNP P14489
A	70	KCX	LYS	microheterogeneity	UNP P14489
B	67	ALA	SER	engineered mutation	UNP P14489
B	70	KCX	LYS	microheterogeneity	UNP P14489

- Molecule 2 is SULFATE ION (three-letter code: SO₄) (formula: O₄S).



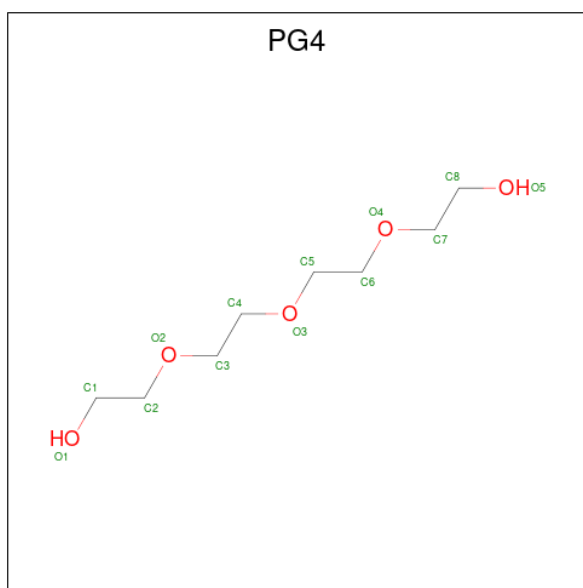
Mol	Chain	Residues	Atoms	ZeroOcc	AltConf
2	A	1	Total O S 5 4 1	0	0
2	A	1	Total O S 5 4 1	0	0
2	A	1	Total O S 5 4 1	0	0
2	A	1	Total O S 5 4 1	0	0
2	A	1	Total O S 5 4 1	0	0
2	B	1	Total O S 5 4 1	0	0
2	B	1	Total O S 5 4 1	0	0
2	B	1	Total O S 5 4 1	0	0

- Molecule 3 is DIMETHYL SULFOXIDE (three-letter code: DMS) (formula: C_2H_6OS).



Mol	Chain	Residues	Atoms	ZeroOcc	AltConf
3	A	1	Total C O S 4 2 1 1	0	0
3	A	1	Total C O S 4 2 1 1	0	0
3	A	1	Total C O S 4 2 1 1	0	0
3	B	1	Total C O S 4 2 1 1	0	0

- Molecule 4 is TETRAETHYLENE GLYCOL (three-letter code: PG4) (formula: $C_8H_{18}O_5$).



Mol	Chain	Residues	Atoms			ZeroOcc	AltConf
4	B	1	Total	C	O	0	0
			10	6	4		

- Molecule 5 is water.

Mol	Chain	Residues	Atoms		ZeroOcc	AltConf
5	A	116	Total	O	0	0
			116	116		
5	B	65	Total	O	0	0
			65	65		

i

● Molecule 1: BETA-LACTAMASE OXA-10



4 Data and refinement statistics

Property	Value	Source
Space group	P 21 21 21	Depositor
Cell constants a, b, c, α , β , γ	48.38Å 95.07Å 125.56Å 90.00° 90.00° 90.00°	Depositor
Resolution (Å)	29.81 – 1.90 29.81 – 1.84	Depositor EDS
% Data completeness (in resolution range)	97.5 (29.81-1.90) 96.5 (29.81-1.84)	Depositor EDS
R_{merge}	0.12	Depositor
R_{sym}	(Not available)	Depositor
$\langle I/\sigma(I) \rangle$ ¹	1.39 (at 1.84Å)	Xtriage
Refinement program	REFMAC 5.2.0019	Depositor
R, R_{free}	0.213 , 0.267 0.213 , 0.268	Depositor DCC
R_{free} test set	2504 reflections (5.09%)	wwPDB-VP
Wilson B-factor (Å ²)	25.3	Xtriage
Anisotropy	0.015	Xtriage
Bulk solvent k_{sol} (e/Å ³), B_{sol} (Å ²)	0.39 , 50.1	EDS
L-test for twinning ²	$\langle L \rangle = 0.41$, $\langle L^2 \rangle = 0.23$	Xtriage
Estimated twinning fraction	No twinning to report.	Xtriage
F_o, F_c correlation	0.94	EDS
Total number of atoms	4149	wwPDB-VP
Average B, all atoms (Å ²)	29.0	wwPDB-VP

Xtriage's analysis on translational NCS is as follows: *The largest off-origin peak in the Patterson function is 4.99% of the height of the origin peak. No significant pseudotranslation is detected.*

¹Intensities estimated from amplitudes.

²Theoretical values of $\langle |L| \rangle$, $\langle L^2 \rangle$ for acentric reflections are 0.5, 0.333 respectively for untwinned datasets, and 0.375, 0.2 for perfectly twinned datasets.

5 Model quality

5.1 Standard geometry

Bond lengths and bond angles in the following residue types are not validated in this section: KCX, DMS, PG4, SO4

The Z score for a bond length (or angle) is the number of standard deviations the observed value is removed from the expected value. A bond length (or angle) with $|Z| > 5$ is considered an outlier worth inspection. RMSZ is the root-mean-square of all Z scores of the bond lengths (or angles).

Mol	Chain	Bond lengths		Bond angles	
		RMSZ	$\# Z > 5$	RMSZ	$\# Z > 5$
1	A	0.74	0/1979	0.76	3/2673 (0.1%)
1	B	0.65	0/1982	0.67	0/2676
All	All	0.70	0/3961	0.72	3/5349 (0.1%)

There are no bond length outliers.

All (3) bond angle outliers are listed below:

Mol	Chain	Res	Type	Atoms	Z	Observed(°)	Ideal(°)
1	A	93	ASP	CB-CG-OD1	5.88	123.59	118.30
1	A	64	LEU	CA-CB-CG	5.85	128.75	115.30
1	A	64	LEU	CB-CG-CD1	5.02	119.54	111.00

There are no chirality outliers.

There are no planarity outliers.

5.2 Too-close contacts

In the following table, the Non-H and H(model) columns list the number of non-hydrogen atoms and hydrogen atoms in the chain respectively. The H(added) column lists the number of hydrogen atoms added and optimized by MolProbity. The Clashes column lists the number of clashes within the asymmetric unit, whereas Symm-Clashes lists symmetry-related clashes.

Mol	Chain	Non-H	H(model)	H(added)	Clashes	Symm-Clashes
1	A	1948	0	1944	24	0
1	B	1954	0	1948	47	0
2	A	25	0	0	0	0
2	B	15	0	0	2	0
3	A	12	0	18	5	0
3	B	4	0	6	9	0

Continued on next page...

Continued from previous page...

Mol	Chain	Non-H	H(model)	H(added)	Clashes	Symm-Clashes
4	B	10	0	13	2	0
5	A	116	0	0	1	0
5	B	65	0	0	1	0
All	All	4149	0	3929	71	0

The all-atom clashscore is defined as the number of clashes found per 1000 atoms (including hydrogen atoms). The all-atom clashscore for this structure is 9.

The worst 5 of 71 close contacts within the same asymmetric unit are listed below, sorted by their clash magnitude.

Atom-1	Atom-2	Interatomic distance (Å)	Clash overlap (Å)
1:B:229:GLU:HG2	1:B:230:THR:N	1.57	1.11
1:B:19:MET:HE2	1:B:44:CYS:HB3	1.19	1.09
1:B:229:GLU:HG2	1:B:230:THR:H	0.91	1.07
1:B:229:GLU:CG	1:B:230:THR:H	1.70	1.05
1:A:24:GLU:HG3	1:A:56:LEU:HG	1.49	0.91

There are no symmetry-related clashes.

5.3 Torsion angles [i](#)

5.3.1 Protein backbone [i](#)

In the following table, the Percentiles column shows the percent Ramachandran outliers of the chain as a percentile score with respect to all X-ray entries followed by that with respect to entries of similar resolution.

The Analysed column shows the number of residues for which the backbone conformation was analysed, and the total number of residues.

Mol	Chain	Analysed	Favoured	Allowed	Outliers	Percentiles	
1	A	242/249 (97%)	230 (95%)	12 (5%)	0	100	100
1	B	243/249 (98%)	233 (96%)	9 (4%)	1 (0%)	34	24
All	All	485/498 (97%)	463 (96%)	21 (4%)	1 (0%)	47	38

All (1) Ramachandran outliers are listed below:

Mol	Chain	Res	Type
1	B	216	ASN

5.3.2 Protein sidechains ⓘ

In the following table, the Percentiles column shows the percent sidechain outliers of the chain as a percentile score with respect to all X-ray entries followed by that with respect to entries of similar resolution.

The Analysed column shows the number of residues for which the sidechain conformation was analysed, and the total number of residues.

Mol	Chain	Analysed	Rotameric	Outliers	Percentiles	
1	A	210/210 (100%)	200 (95%)	10 (5%)	25	16
1	B	210/210 (100%)	202 (96%)	8 (4%)	33	24
All	All	420/420 (100%)	402 (96%)	18 (4%)	29	19

5 of 18 residues with a non-rotameric sidechain are listed below:

Mol	Chain	Res	Type
1	B	126	GLU
1	B	256	LYS
1	B	165	ASN
1	A	199	GLU
1	B	115	SER

Sometimes sidechains can be flipped to improve hydrogen bonding and reduce clashes. 5 of 9 such sidechains are listed below:

Mol	Chain	Res	Type
1	B	145	ASN
1	B	203	HIS
1	B	73	ASN
1	B	88	GLN
1	B	101	GLN

5.3.3 RNA ⓘ

There are no RNA molecules in this entry.

5.4 Non-standard residues in protein, DNA, RNA chains ⓘ

2 non-standard protein/DNA/RNA residues are modelled in this entry.

In the following table, the Counts columns list the number of bonds (or angles) for which Mogul statistics could be retrieved, the number of bonds (or angles) that are observed in the model and the number of bonds (or angles) that are defined in the Chemical Component Dictionary. The

Link column lists molecule types, if any, to which the group is linked. The Z score for a bond length (or angle) is the number of standard deviations the observed value is removed from the expected value. A bond length (or angle) with $|Z| > 2$ is considered an outlier worth inspection. RMSZ is the root-mean-square of all Z scores of the bond lengths (or angles).

Mol	Type	Chain	Res	Link	Bond lengths			Bond angles		
					Counts	RMSZ	# Z > 2	Counts	RMSZ	# Z > 2
1	KCX	B	70[A]	1	10,11,12	1.14	1 (10%)	6,12,14	0.98	1 (16%)
1	KCX	A	70[A]	1	10,11,12	1.29	2 (20%)	6,12,14	1.11	0

In the following table, the Chirals column lists the number of chiral outliers, the number of chiral centers analysed, the number of these observed in the model and the number defined in the Chemical Component Dictionary. Similar counts are reported in the Torsion and Rings columns. '-' means no outliers of that kind were identified.

Mol	Type	Chain	Res	Link	Chirals	Torsions	Rings
1	KCX	B	70[A]	1	-	2/9/10/12	-
1	KCX	A	70[A]	1	-	0/9/10/12	-

All (3) bond length outliers are listed below:

Mol	Chain	Res	Type	Atoms	Z	Observed(Å)	Ideal(Å)
1	A	70[A]	KCX	OQ1-CX	2.42	1.26	1.21
1	B	70[A]	KCX	CE-NZ	2.35	1.51	1.46
1	A	70[A]	KCX	CE-NZ	2.34	1.51	1.46

All (1) bond angle outliers are listed below:

Mol	Chain	Res	Type	Atoms	Z	Observed(°)	Ideal(°)
1	B	70[A]	KCX	OQ1-CX-NZ	-2.26	121.49	124.92

There are no chirality outliers.

All (2) torsion outliers are listed below:

Mol	Chain	Res	Type	Atoms
1	B	70[A]	KCX	O-C-CA-CB
1	B	70[A]	KCX	C-CA-CB-CG

There are no ring outliers.

No monomer is involved in short contacts.

5.5 Carbohydrates [i](#)

There are no monosaccharides in this entry.

5.6 Ligand geometry [i](#)

13 ligands are modelled in this entry.

In the following table, the Counts columns list the number of bonds (or angles) for which Mogul statistics could be retrieved, the number of bonds (or angles) that are observed in the model and the number of bonds (or angles) that are defined in the Chemical Component Dictionary. The Link column lists molecule types, if any, to which the group is linked. The Z score for a bond length (or angle) is the number of standard deviations the observed value is removed from the expected value. A bond length (or angle) with $|Z| > 2$ is considered an outlier worth inspection. RMSZ is the root-mean-square of all Z scores of the bond lengths (or angles).

Mol	Type	Chain	Res	Link	Bond lengths			Bond angles		
					Counts	RMSZ	# Z > 2	Counts	RMSZ	# Z > 2
3	DMS	B	1268	-	3,3,3	2.68	1 (33%)	3,3,3	0.84	0
2	SO4	B	1266	-	4,4,4	0.23	0	6,6,6	0.44	0
2	SO4	A	1267	-	4,4,4	0.25	0	6,6,6	0.24	0
2	SO4	A	1265	-	4,4,4	0.23	0	6,6,6	0.82	0
2	SO4	A	1266	-	4,4,4	0.35	0	6,6,6	0.30	0
2	SO4	B	1265	-	4,4,4	0.31	0	6,6,6	0.38	0
2	SO4	B	1267	-	4,4,4	0.25	0	6,6,6	0.09	0
3	DMS	A	1272	-	3,3,3	2.70	1 (33%)	3,3,3	0.63	0
3	DMS	A	1270	-	3,3,3	2.76	1 (33%)	3,3,3	0.79	0
4	PG4	B	1269	-	9,9,12	0.37	0	8,8,11	0.41	0
3	DMS	A	1271	-	3,3,3	2.66	1 (33%)	3,3,3	0.77	0
2	SO4	A	1269	-	4,4,4	0.26	0	6,6,6	0.10	0
2	SO4	A	1268	-	4,4,4	0.24	0	6,6,6	0.23	0

In the following table, the Chirals column lists the number of chiral outliers, the number of chiral centers analysed, the number of these observed in the model and the number defined in the Chemical Component Dictionary. Similar counts are reported in the Torsion and Rings columns. '-' means no outliers of that kind were identified.

Mol	Type	Chain	Res	Link	Chirals	Torsions	Rings
4	PG4	B	1269	-	-	5/7/7/10	-

All (4) bond length outliers are listed below:

Mol	Chain	Res	Type	Atoms	Z	Observed(Å)	Ideal(Å)
3	A	1270	DMS	O-S	4.70	1.81	1.50
3	B	1268	DMS	O-S	4.57	1.80	1.50
3	A	1272	DMS	O-S	4.53	1.80	1.50
3	A	1271	DMS	O-S	4.51	1.80	1.50

There are no bond angle outliers.

There are no chirality outliers.

All (5) torsion outliers are listed below:

Mol	Chain	Res	Type	Atoms
4	B	1269	PG4	O2-C3-C4-O3
4	B	1269	PG4	O3-C5-C6-O4
4	B	1269	PG4	C4-C3-O2-C2
4	B	1269	PG4	C1-C2-O2-C3
4	B	1269	PG4	C3-C4-O3-C5

There are no ring outliers.

5 monomers are involved in 18 short contacts:

Mol	Chain	Res	Type	Clashes	Symm-Clashes
3	B	1268	DMS	9	0
2	B	1266	SO4	1	0
2	B	1267	SO4	1	0
4	B	1269	PG4	2	0
3	A	1271	DMS	5	0

5.7 Other polymers [i](#)

There are no such residues in this entry.

5.8 Polymer linkage issues [i](#)

There are no chain breaks in this entry.

6 Fit of model and data [i](#)

6.1 Protein, DNA and RNA chains [i](#)

In the following table, the column labelled ‘#RSRZ > 2’ contains the number (and percentage) of RSRZ outliers, followed by percent RSRZ outliers for the chain as percentile scores relative to all X-ray entries and entries of similar resolution. The OWAB column contains the minimum, median, 95th percentile and maximum values of the occupancy-weighted average B-factor per residue. The column labelled ‘Q < 0.9’ lists the number of (and percentage) of residues with an average occupancy less than 0.9.

Mol	Chain	Analysed	<RSRZ>	#RSRZ>2	OWAB(Å ²)	Q<0.9
1	A	243/249 (97%)	0.19	13 (5%) 26 29	9, 19, 52, 66	0
1	B	245/249 (98%)	0.66	31 (12%) 3 4	12, 31, 62, 92	0
All	All	488/498 (97%)	0.43	44 (9%) 9 10	9, 25, 58, 92	0

The worst 5 of 44 RSRZ outliers are listed below:

Mol	Chain	Res	Type	RSRZ
1	B	92	TRP	4.7
1	B	96	PRO	4.6
1	B	95	LYS	4.4
1	B	213	THR	4.2
1	A	49	LYS	4.1

6.2 Non-standard residues in protein, DNA, RNA chains [i](#)

In the following table, the Atoms column lists the number of modelled atoms in the group and the number defined in the chemical component dictionary. The B-factors column lists the minimum, median, 95th percentile and maximum values of B factors of atoms in the group. The column labelled ‘Q < 0.9’ lists the number of atoms with occupancy less than 0.9.

Mol	Type	Chain	Res	Atoms	RSCC	RSR	B-factors(Å ²)	Q<0.9
1	KCX	B	70[A]	12/13	0.93	0.21	15,21,25,27	12
1	KCX	A	70[A]	12/13	0.95	0.22	10,13,16,17	12

6.3 Carbohydrates [i](#)

There are no monosaccharides in this entry.

6.4 Ligands [i](#)

In the following table, the Atoms column lists the number of modelled atoms in the group and the number defined in the chemical component dictionary. The B-factors column lists the minimum, median, 95th percentile and maximum values of B factors of atoms in the group. The column labelled 'Q< 0.9' lists the number of atoms with occupancy less than 0.9.

Mol	Type	Chain	Res	Atoms	RSCC	RSR	B-factors(Å ²)	Q<0.9
2	SO4	A	1269	5/5	0.89	0.29	80,80,81,81	0
2	SO4	B	1266	5/5	0.92	0.15	40,44,47,48	0
2	SO4	A	1267	5/5	0.93	0.18	63,63,65,65	0
4	PG4	B	1269	10/13	0.93	0.16	29,38,44,45	0
2	SO4	B	1267	5/5	0.94	0.22	74,75,75,75	0
2	SO4	A	1266	5/5	0.94	0.20	50,51,51,52	0
3	DMS	B	1268	4/4	0.95	0.24	38,38,43,45	0
2	SO4	A	1268	5/5	0.96	0.18	66,67,68,68	0
3	DMS	A	1272	4/4	0.97	0.10	43,46,46,46	0
3	DMS	A	1270	4/4	0.97	0.19	21,21,25,31	0
3	DMS	A	1271	4/4	0.97	0.16	24,27,33,37	0
2	SO4	B	1265	5/5	0.98	0.05	35,39,42,43	0
2	SO4	A	1265	5/5	0.99	0.09	19,20,23,24	0

6.5 Other polymers [i](#)

There are no such residues in this entry.