



Full wwPDB X-ray Structure Validation Report ⓘ

Apr 22, 2025 – 01:41 AM EDT

PDB ID : 4WS4 / pdb_00004ws4
Title : Crystal structure of Mycobacterium tuberculosis uracil-DNA glycosylase in complex with 5-nitrouracil, Form I
Authors : Arif, S.M.; Geethanandan, K.; Mishra, P.; Surolia, A.; Varshney, U.; Vijayan, M.
Deposited on : 2014-10-25
Resolution : 1.18 Å(reported)

This is a Full wwPDB X-ray Structure Validation Report for a publicly released PDB entry.

We welcome your comments at validation@mail.wwpdb.org

A user guide is available at

<https://www.wwpdb.org/validation/2017/XrayValidationReportHelp>

with specific help available everywhere you see the ⓘ symbol.

The types of validation reports are described at

<http://www.wwpdb.org/validation/2017/FAQs#types>.

The following versions of software and data (see [references ⓘ](#)) were used in the production of this report:

MolProbity	:	4.02b-467
Mogul	:	2022.3.0, CSD as543be (2022)
Xtriage (Phenix)	:	2.0rc1
EDS	:	3.0
Percentile statistics	:	20231227.v01 (using entries in the PDB archive December 27th 2023)
CCP4	:	9.0.006 (Gargrove)
Density-Fitness	:	1.0.12
Ideal geometry (proteins)	:	Engh & Huber (2001)
Ideal geometry (DNA, RNA)	:	Parkinson et al. (1996)
Validation Pipeline (wwPDB-VP)	:	2.42

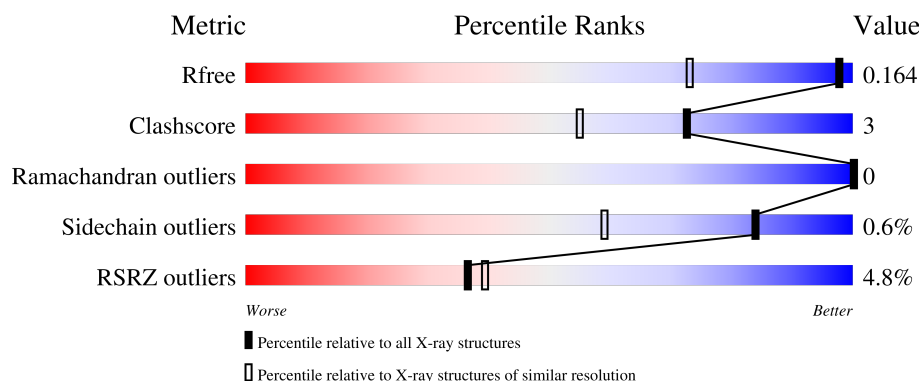
1 Overall quality at a glance

The following experimental techniques were used to determine the structure:

X-RAY DIFFRACTION


The reported resolution of this entry is 1.18 Å.

Percentile scores (ranging between 0-100) for global validation metrics of the entry are shown in the following graphic. The table shows the number of entries on which the scores are based.



Metric	Whole archive (#Entries)	Similar resolution (#Entries, resolution range(Å))
R_{free}	164625	1569 (1.20-1.16)
Clashscore	180529	1711 (1.20-1.16)
Ramachandran outliers	177936	1657 (1.20-1.16)
Sidechain outliers	177891	1657 (1.20-1.16)
RSRZ outliers	164620	1568 (1.20-1.16)

The table below summarises the geometric issues observed across the polymeric chains and their fit to the electron density. The red, orange, yellow and green segments of the lower bar indicate the fraction of residues that contain outliers for ≥ 3 , 2, 1 and 0 types of geometric quality criteria respectively. A grey segment represents the fraction of residues that are not modelled. The numeric value for each fraction is indicated below the corresponding segment, with a dot representing fractions $\leq 5\%$. The upper red bar (where present) indicates the fraction of residues that have poor fit to the electron density. The numeric value is given above the bar.

Mol	Chain	Length	Quality of chain
1	A	238	

The following table lists non-polymeric compounds, carbohydrate monomers and non-standard residues in protein, DNA, RNA chains that are outliers for geometric or electron-density-fit criteria:

Mol	Type	Chain	Res	Chirality	Geometry	Clashes	Electron density
5	DMS	A	307	-	-	X	-

2 Entry composition

There are 7 unique types of molecules in this entry. The entry contains 2233 atoms, of which 0 are hydrogens and 0 are deuteriums.

In the tables below, the ZeroOcc column contains the number of atoms modelled with zero occupancy, the AltConf column contains the number of residues with at least one atom in alternate conformation and the Trace column contains the number of residues modelled with at most 2 atoms.

- Molecule 1 is a protein called Uracil-DNA glycosylase.

Mol	Chain	Residues	Atoms					ZeroOcc	AltConf	Trace
1	A	228	Total	C	N	O	S	0	14	0
			1853	1175	345	324	9			

There are 11 discrepancies between the modelled and reference sequences:

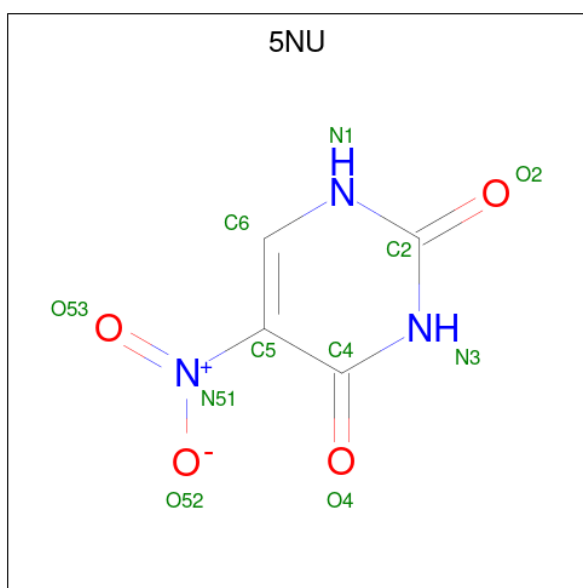
Chain	Residue	Modelled	Actual	Comment	Reference
A	-10	MET	-	expression tag	UNP P9WFQ9
A	-9	HIS	-	expression tag	UNP P9WFQ9
A	-8	HIS	-	expression tag	UNP P9WFQ9
A	-7	HIS	-	expression tag	UNP P9WFQ9
A	-6	HIS	-	expression tag	UNP P9WFQ9
A	-5	HIS	-	expression tag	UNP P9WFQ9
A	-4	HIS	-	expression tag	UNP P9WFQ9
A	-3	GLY	-	expression tag	UNP P9WFQ9
A	-2	MET	-	expression tag	UNP P9WFQ9
A	-1	ALA	-	expression tag	UNP P9WFQ9
A	0	SER	-	expression tag	UNP P9WFQ9

- Molecule 2 is CITRIC ACID (CCD ID: CIT) (formula: $C_6H_8O_7$).



Mol	Chain	Residues	Atoms			ZeroOcc	AltConf
2	A	1	Total	C	O	0	0
			13	6	7		
2	A	1	Total	C	O	0	0
			13	6	7		

- Molecule 3 is 5-nitrouracil (CCD ID: 5NU) (formula: $C_4H_3N_3O_4$).



Mol	Chain	Residues	Atoms				ZeroOcc	AltConf
3	A	1	Total	C	N	O	0	0
			11	4	3	4		

- Molecule 4 is ISOPROPYL ALCOHOL (CCD ID: IPA) (formula: C_3H_8O).



Mol	Chain	Residues	Atoms			ZeroOcc	AltConf
4	A	1	Total	C	O	0	0
			4	3	1		

- Molecule 5 is DIMETHYL SULFOXIDE (CCD ID: DMS) (formula: C_2H_6OS).



Mol	Chain	Residues	Atoms				ZeroOcc	AltConf
5	A	1	Total	C	O	S	0	0
			4	2	1	1		
5	A	1	Total	C	O	S	0	0
			4	2	1	1		
5	A	1	Total	C	O	S	0	0
			4	2	1	1		

Continued on next page...

Continued from previous page...

Mol	Chain	Residues	Atoms				ZeroOcc	AltConf
5	A	1	Total	C	O	S	0	0
			4	2	1	1		

- Molecule 6 is CHLORIDE ION (CCD ID: CL) (formula: Cl).

Mol	Chain	Residues	Atoms		ZeroOcc	AltConf
6	A	2	Total	Cl	0	0
			2	2		


- Molecule 7 is water.

Mol	Chain	Residues	Atoms		ZeroOcc	AltConf
7	A	318	Total	O	0	3
			321	321		

3 Residue-property plots [i](#)

These plots are drawn for all protein, RNA, DNA and oligosaccharide chains in the entry. The first graphic for a chain summarises the proportions of the various outlier classes displayed in the second graphic. The second graphic shows the sequence view annotated by issues in geometry and electron density. Residues are color-coded according to the number of geometric quality criteria for which they contain at least one outlier: green = 0, yellow = 1, orange = 2 and red = 3 or more. A red dot above a residue indicates a poor fit to the electron density ($RSRZ > 2$). Stretches of 2 or more consecutive residues without any outlier are shown as a green connector. Residues present in the sample, but not in the model, are shown in grey.

• Molecule 1: Uracil-DNA glycosylase

Chain A: 



4 Data and refinement statistics

Property	Value	Source
Space group	P 1 21 1	Depositor
Cell constants a, b, c, α , β , γ	39.02Å 64.12Å 45.13Å 90.00° 112.46° 90.00°	Depositor
Resolution (Å)	32.07 – 1.18 32.07 – 1.18	Depositor EDS
% Data completeness (in resolution range)	99.8 (32.07-1.18) 99.8 (32.07-1.18)	Depositor EDS
R_{merge}	0.10	Depositor
R_{sym}	(Not available)	Depositor
$\langle I/\sigma(I) \rangle$ ¹	1.79 (at 1.18Å)	Xtriage
Refinement program	REFMAC 5.8.0049	Depositor
R, R_{free}	0.129 , 0.164 0.129 , 0.164	Depositor DCC
R_{free} test set	3408 reflections (5.06%)	wwPDB-VP
Wilson B-factor (Å ²)	9.1	Xtriage
Anisotropy	0.418	Xtriage
Bulk solvent k_{sol} (e/Å ³), B_{sol} (Å ²)	0.35 , 43.9	EDS
L-test for twinning ²	$\langle L \rangle = 0.49$, $\langle L^2 \rangle = 0.33$	Xtriage
Estimated twinning fraction	No twinning to report.	Xtriage
F_o, F_c correlation	0.97	EDS
Total number of atoms	2233	wwPDB-VP
Average B, all atoms (Å ²)	13.0	wwPDB-VP

Xtriage's analysis on translational NCS is as follows: *The largest off-origin peak in the Patterson function is 9.75% of the height of the origin peak. No significant pseudotranslation is detected.*

¹Intensities estimated from amplitudes.

²Theoretical values of $\langle |L| \rangle$, $\langle L^2 \rangle$ for acentric reflections are 0.5, 0.333 respectively for untwinned datasets, and 0.375, 0.2 for perfectly twinned datasets.

5 Model quality [i](#)

5.1 Standard geometry [i](#)

Bond lengths and bond angles in the following residue types are not validated in this section: CL, 5NU, IPA, CIT, DMS

The Z score for a bond length (or angle) is the number of standard deviations the observed value is removed from the expected value. A bond length (or angle) with $|Z| > 5$ is considered an outlier worth inspection. RMSZ is the root-mean-square of all Z scores of the bond lengths (or angles).

Mol	Chain	Bond lengths		Bond angles	
		RMSZ	$\# Z > 5$	RMSZ	$\# Z > 5$
1	A	0.63	0/1911	0.89	7/2610 (0.3%)

There are no bond length outliers.

All (7) bond angle outliers are listed below:

Mol	Chain	Res	Type	Atoms	Z	Observed(°)	Ideal(°)
1	A	141	ARG	NE-CZ-NH1	9.93	125.27	120.30
1	A	141	ARG	NE-CZ-NH2	-7.72	116.44	120.30
1	A	41	ARG	NE-CZ-NH2	-7.61	116.49	120.30
1	A	41	ARG	NE-CZ-NH1	7.58	124.09	120.30
1	A	205	ARG	NE-CZ-NH1	-6.54	117.03	120.30
1	A	209	ARG	NE-CZ-NH2	6.44	123.52	120.30
1	A	209	ARG	NE-CZ-NH1	-5.90	117.35	120.30

There are no chirality outliers.

There are no planarity outliers.

5.2 Too-close contacts [i](#)

In the following table, the Non-H and H(model) columns list the number of non-hydrogen atoms and hydrogen atoms in the chain respectively. The H(added) column lists the number of hydrogen atoms added and optimized by MolProbity. The Clashes column lists the number of clashes within the asymmetric unit, whereas Symm-Clashes lists symmetry-related clashes.

Mol	Chain	Non-H	H(model)	H(added)	Clashes	Symm-Clashes
1	A	1853	0	1847	8	0
2	A	26	0	9	0	0
3	A	11	0	3	0	0
4	A	4	0	8	0	0

Continued on next page...

Continued from previous page...

Mol	Chain	Non-H	H(model)	H(added)	Clashes	Symm-Clashes
5	A	16	0	24	4	0
6	A	2	0	0	0	0
7	A	321	0	0	6	0
All	All	2233	0	1891	12	0

The all-atom clashscore is defined as the number of clashes found per 1000 atoms (including hydrogen atoms). The all-atom clashscore for this structure is 3.

All (12) close contacts within the same asymmetric unit are listed below, sorted by their clash magnitude.

Atom-1	Atom-2	Interatomic distance (Å)	Clash overlap (Å)
1:A:162:PRO:HB3	1:A:217[A]:MET:SD	2.39	0.63
1:A:124:LEU:HD13	7:A:699:HOH:O	2.05	0.55
5:A:307:DMS:H22	7:A:605:HOH:O	2.07	0.54
5:A:307:DMS:C2	7:A:605:HOH:O	2.56	0.53
1:A:159:ARG:O	1:A:183:ASN:ND2	2.43	0.52
5:A:307:DMS:C2	7:A:618:HOH:O	2.59	0.51
1:A:63:LEU:HD13	1:A:124:LEU:HD23	1.95	0.47
1:A:88[A]:ARG:HA	1:A:89:PRO:C	2.36	0.44
5:A:307:DMS:H21	7:A:618:HOH:O	2.17	0.44
1:A:183:ASN:OD1	1:A:183:ASN:N	2.52	0.42
1:A:27[A]:HIS:CE1	7:A:701:HOH:O	2.72	0.42
1:A:181:ALA:HB1	1:A:183:ASN:OD1	2.22	0.40

There are no symmetry-related clashes.

5.3 Torsion angles [i](#)

5.3.1 Protein backbone [i](#)

In the following table, the Percentiles column shows the percent Ramachandran outliers of the chain as a percentile score with respect to all X-ray entries followed by that with respect to entries of similar resolution.

The Analysed column shows the number of residues for which the backbone conformation was analysed, and the total number of residues.

Mol	Chain	Analysed	Favoured	Allowed	Outliers	Percentiles	
1	A	240/238 (101%)	236 (98%)	4 (2%)	0	100	100

There are no Ramachandran outliers to report.

5.3.2 Protein sidechains [i](#)

In the following table, the Percentiles column shows the percent sidechain outliers of the chain as a percentile score with respect to all X-ray entries followed by that with respect to entries of similar resolution.

The Analysed column shows the number of residues for which the sidechain conformation was analysed, and the total number of residues.

Mol	Chain	Analysed	Rotameric	Outliers	Percentiles
1	A	191/186 (103%)	189 (99%)	2 (1%)	73 42

All (2) residues with a non-rotameric sidechain are listed below:

Mol	Chain	Res	Type
1	A	1[A]	MET
1	A	1[B]	MET

Sometimes sidechains can be flipped to improve hydrogen bonding and reduce clashes. There are no such sidechains identified.

5.3.3 RNA [i](#)

There are no RNA molecules in this entry.

5.4 Non-standard residues in protein, DNA, RNA chains [i](#)

There are no non-standard protein/DNA/RNA residues in this entry.

5.5 Carbohydrates [i](#)

There are no oligosaccharides in this entry.

5.6 Ligand geometry [i](#)

Of 10 ligands modelled in this entry, 2 are monoatomic - leaving 8 for Mogul analysis.

In the following table, the Counts columns list the number of bonds (or angles) for which Mogul statistics could be retrieved, the number of bonds (or angles) that are observed in the model and the number of bonds (or angles) that are defined in the Chemical Component Dictionary. The

Link column lists molecule types, if any, to which the group is linked. The Z score for a bond length (or angle) is the number of standard deviations the observed value is removed from the expected value. A bond length (or angle) with $|Z| > 2$ is considered an outlier worth inspection. RMSZ is the root-mean-square of all Z scores of the bond lengths (or angles).

Mol	Type	Chain	Res	Link	Bond lengths			Bond angles		
					Counts	RMSZ	# Z > 2	Counts	RMSZ	# Z > 2
5	DMS	A	305	-	3,3,3	0.39	0	3,3,3	0.69	0
2	CIT	A	301	-	12,12,12	2.39	5 (41%)	17,17,17	2.07	8 (47%)
5	DMS	A	306	-	3,3,3	0.52	0	3,3,3	0.42	0
4	IPA	A	304	-	3,3,3	0.41	0	3,3,3	0.59	0
3	5NU	A	303	-	10,11,11	3.07	5 (50%)	10,15,15	5.21	7 (70%)
5	DMS	A	308	-	3,3,3	0.54	0	3,3,3	0.16	0
2	CIT	A	302	-	12,12,12	1.28	1 (8%)	17,17,17	1.92	4 (23%)
5	DMS	A	307	-	3,3,3	0.61	0	3,3,3	2.03	2 (66%)

In the following table, the Chirals column lists the number of chiral outliers, the number of chiral centers analysed, the number of these observed in the model and the number defined in the Chemical Component Dictionary. Similar counts are reported in the Torsion and Rings columns. '-' means no outliers of that kind were identified.

Mol	Type	Chain	Res	Link	Chirals	Torsions	Rings
2	CIT	A	302	-	-	6/16/16/16	-
2	CIT	A	301	-	-	2/16/16/16	-
3	5NU	A	303	-	-	0/2/4/4	0/1/1/1

All (11) bond length outliers are listed below:

Mol	Chain	Res	Type	Atoms	Z	Observed(Å)	Ideal(Å)
3	A	303	5NU	C5-C4	-5.47	1.41	1.47
3	A	303	5NU	O53-N51	5.13	1.31	1.22
2	A	301	CIT	C3-C6	4.92	1.58	1.53
2	A	301	CIT	O7-C3	-4.65	1.34	1.43
3	A	303	5NU	O2-C2	4.26	1.32	1.23
3	A	303	5NU	C2-N1	-2.88	1.32	1.36
2	A	301	CIT	O4-C5	-2.62	1.22	1.30
2	A	301	CIT	C2-C3	-2.45	1.50	1.54
2	A	301	CIT	O5-C6	2.08	1.28	1.22
3	A	303	5NU	C6-N1	-2.06	1.32	1.36
2	A	302	CIT	C2-C3	-2.04	1.51	1.54

All (21) bond angle outliers are listed below:

Mol	Chain	Res	Type	Atoms	Z	Observed(°)	Ideal(°)
3	A	303	5NU	N1-C2-N3	10.52	126.27	115.17
3	A	303	5NU	C6-N1-C2	-7.78	115.47	122.69
3	A	303	5NU	O4-C4-C5	5.21	126.13	118.90
3	A	303	5NU	O2-C2-N1	-4.98	117.65	122.79
2	A	302	CIT	O7-C3-C6	4.64	115.54	108.96
2	A	301	CIT	O6-C6-C3	4.38	121.54	113.14
3	A	303	5NU	C4-N3-C2	-4.30	120.44	126.37
3	A	303	5NU	C5-C4-N3	3.87	114.12	112.19
2	A	302	CIT	O6-C6-C3	3.68	120.21	113.14
2	A	301	CIT	C4-C3-C6	-3.52	102.24	110.03
3	A	303	5NU	O2-C2-N3	-3.38	115.86	121.86
2	A	301	CIT	O7-C3-C4	3.18	116.63	109.38
2	A	302	CIT	O4-C5-C4	2.72	122.97	114.35
2	A	302	CIT	O3-C5-C4	-2.54	115.76	122.95
2	A	301	CIT	C2-C3-C6	-2.25	105.05	110.03
2	A	301	CIT	C3-C2-C1	2.21	119.97	113.92
5	A	307	DMS	O-S-C2	2.20	117.53	106.49
2	A	301	CIT	O4-C5-C4	2.16	121.20	114.35
2	A	301	CIT	O3-C5-C4	-2.09	117.02	122.95
2	A	301	CIT	O7-C3-C2	2.06	114.09	109.38
5	A	307	DMS	C2-S-C1	2.04	108.89	98.42

There are no chirality outliers.

All (8) torsion outliers are listed below:

Mol	Chain	Res	Type	Atoms
2	A	302	CIT	C3-C4-C5-O4
2	A	302	CIT	C3-C4-C5-O3
2	A	301	CIT	C3-C4-C5-O4
2	A	301	CIT	C3-C4-C5-O3
2	A	302	CIT	O1-C1-C2-C3
2	A	302	CIT	C2-C3-C6-O5
2	A	302	CIT	C4-C3-C6-O5
2	A	302	CIT	O2-C1-C2-C3

There are no ring outliers.

1 monomer is involved in 4 short contacts:

Mol	Chain	Res	Type	Clashes	Symm-Clashes
5	A	307	DMS	4	0

5.7 Other polymers [i](#)

There are no such residues in this entry.

5.8 Polymer linkage issues [i](#)

There are no chain breaks in this entry.

6 Fit of model and data [i](#)

6.1 Protein, DNA and RNA chains [i](#)

In the following table, the column labelled ‘#RSRZ> 2’ contains the number (and percentage) of RSRZ outliers, followed by percent RSRZ outliers for the chain as percentile scores relative to all X-ray entries and entries of similar resolution. The OWAB column contains the minimum, median, 95th percentile and maximum values of the occupancy-weighted average B-factor per residue. The column labelled ‘Q< 0.9’ lists the number of (and percentage) of residues with an average occupancy less than 0.9.

Mol	Chain	Analysed	<RSRZ>	#RSRZ>2	OWAB(Å ²)	Q<0.9
1	A	228/238 (95%)	-0.04	11 (4%) 36 39	4, 9, 20, 65	14 (6%)

All (11) RSRZ outliers are listed below:

Mol	Chain	Res	Type	RSRZ
1	A	180	ALA	7.7
1	A	184[A]	CYS	6.8
1	A	182	GLY	6.3
1	A	161	ALA	4.4
1	A	2	THR	3.6
1	A	27[A]	HIS	3.4
1	A	181	ALA	3.2
1	A	183	ASN	2.6
1	A	185[A]	VAL	2.2
1	A	0	SER	2.1
1	A	160	ALA	2.1

6.2 Non-standard residues in protein, DNA, RNA chains [i](#)

There are no non-standard protein/DNA/RNA residues in this entry.

6.3 Carbohydrates [i](#)

There are no monosaccharides in this entry.

6.4 Ligands [i](#)

In the following table, the Atoms column lists the number of modelled atoms in the group and the number defined in the chemical component dictionary. The B-factors column lists the minimum,

median, 95th percentile and maximum values of B factors of atoms in the group. The column labelled 'Q< 0.9' lists the number of atoms with occupancy less than 0.9.

Mol	Type	Chain	Res	Atoms	RSCC	RSR	B-factors(Å ²)	Q<0.9
4	IPA	A	304	4/4	0.86	0.12	18,22,23,39	0
5	DMS	A	307	4/4	0.91	0.14	17,20,21,27	0
5	DMS	A	308	4/4	0.92	0.14	17,22,25,29	0
6	CL	A	310	1/1	0.93	0.13	45,45,45,45	0
2	CIT	A	302	13/13	0.94	0.08	13,16,25,26	0
5	DMS	A	306	4/4	0.95	0.12	15,18,19,19	0
2	CIT	A	301	13/13	0.97	0.06	11,13,15,16	0
5	DMS	A	305	4/4	0.97	0.11	12,14,15,15	0
3	5NU	A	303	11/11	0.99	0.04	6,7,13,15	0
6	CL	A	309	1/1	1.00	0.07	14,14,14,14	0

6.5 Other polymers ⓘ

There are no such residues in this entry.