



Full wwPDB X-ray Structure Validation Report ⓘ

Jun 17, 2024 – 09:52 PM EDT

PDB ID : 5WRZ
Title : Structure of human PARP1 catalytic domain bound to a phthalazinone inhibitor
Authors : Cao, R.; Wang, Y.L.; Zhou, J.; Huang, N.; Xu, B.L.
Deposited on : 2016-12-04
Resolution : 2.20 Å(reported)

This is a Full wwPDB X-ray Structure Validation Report for a publicly released PDB entry.

We welcome your comments at validation@mail.wwpdb.org

A user guide is available at

<https://www.wwpdb.org/validation/2017/XrayValidationReportHelp>

with specific help available everywhere you see the ⓘ symbol.

The types of validation reports are described at

<http://www.wwpdb.org/validation/2017/FAQs#types>.

The following versions of software and data (see [references ⓘ](#)) were used in the production of this report:

MolProbity	:	4.02b-467
Mogul	:	1.8.5 (274361), CSD as541be (2020)
Xtriage (Phenix)	:	1.13
EDS	:	2.37.1
buster-report	:	1.1.7 (2018)
Percentile statistics	:	20191225.v01 (using entries in the PDB archive December 25th 2019)
Refmac	:	5.8.0158
CCP4	:	7.0.044 (Gargrove)
Ideal geometry (proteins)	:	Engh & Huber (2001)
Ideal geometry (DNA, RNA)	:	Parkinson et al. (1996)
Validation Pipeline (wwPDB-VP)	:	2.37.1

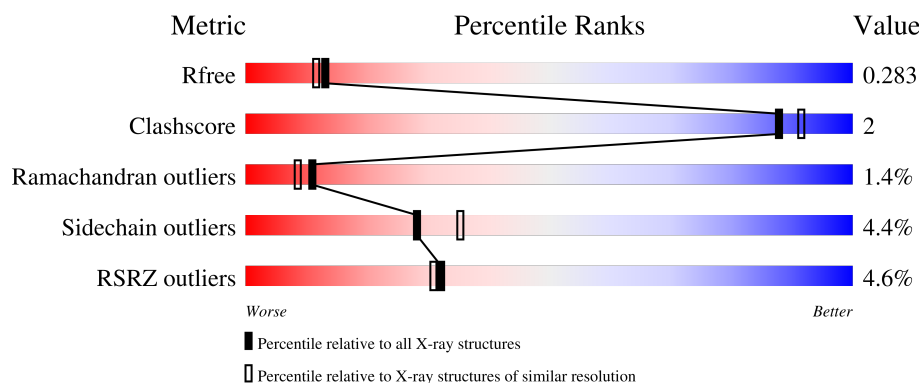
1 Overall quality at a glance

The following experimental techniques were used to determine the structure:

X-RAY DIFFRACTION

The reported resolution of this entry is 2.20 Å.

Percentile scores (ranging between 0-100) for global validation metrics of the entry are shown in the following graphic. The table shows the number of entries on which the scores are based.



Metric	Whole archive (#Entries)	Similar resolution (#Entries, resolution range(Å))
R_{free}	130704	4898 (2.20-2.20)
Clashscore	141614	5594 (2.20-2.20)
Ramachandran outliers	138981	5503 (2.20-2.20)
Sidechain outliers	138945	5504 (2.20-2.20)
RSRZ outliers	127900	4800 (2.20-2.20)

The table below summarises the geometric issues observed across the polymeric chains and their fit to the electron density. The red, orange, yellow and green segments of the lower bar indicate the fraction of residues that contain outliers for ≥ 3 , 2, 1 and 0 types of geometric quality criteria respectively. A grey segment represents the fraction of residues that are not modelled. The numeric value for each fraction is indicated below the corresponding segment, with a dot representing fractions $\leq 5\%$. The upper red bar (where present) indicates the fraction of residues that have poor fit to the electron density. The numeric value is given above the bar.

Mol	Chain	Length	Quality of chain
1	A	352	<div> <div>3%</div> <div>89%</div> <div>9%</div> <div>.</div> </div>
1	B	352	<div> <div>6%</div> <div>87%</div> <div>11%</div> <div>..</div> </div>

2 Entry composition [i](#)

There are 2 unique types of molecules in this entry. The entry contains 5584 atoms, of which 0 are hydrogens and 0 are deuteriums.

In the tables below, the ZeroOcc column contains the number of atoms modelled with zero occupancy, the AltConf column contains the number of residues with at least one atom in alternate conformation and the Trace column contains the number of residues modelled with at most 2 atoms.

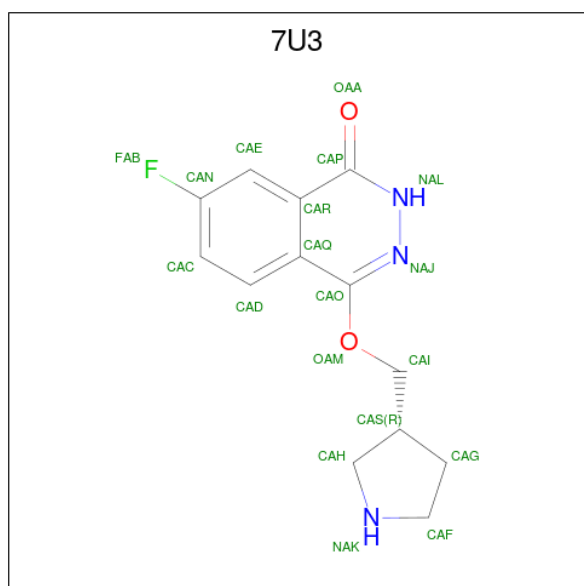
- Molecule 1 is a protein called Poly [ADP-ribose] polymerase 1.

Mol	Chain	Residues	Atoms					ZeroOcc	AltConf	Trace
1	A	351	Total	C	N	O	S	0	3	0
			2773	1763	470	527	13			
1	B	351	Total	C	N	O	S	0	3	0
			2773	1763	470	527	13			

There are 6 discrepancies between the modelled and reference sequences:

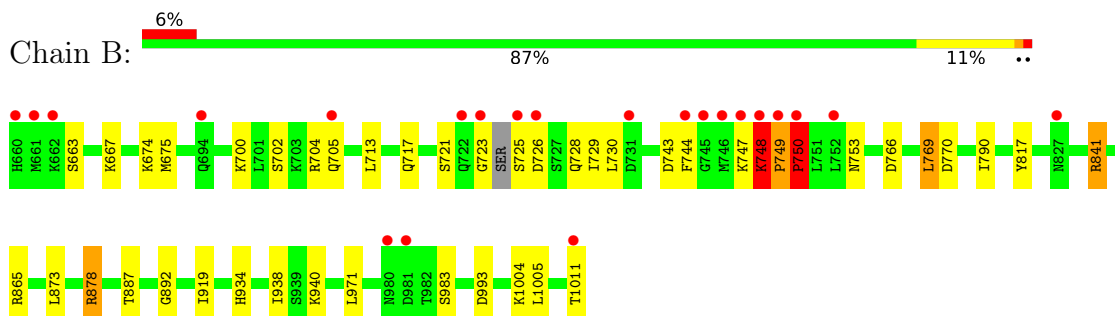
Chain	Residue	Modelled	Actual	Comment	Reference
A	660	HIS	-	expression tag	UNP P09874
A	661	MET	-	expression tag	UNP P09874
A	762	ALA	VAL	engineered mutation	UNP P09874
B	660	HIS	-	expression tag	UNP P09874
B	661	MET	-	expression tag	UNP P09874
B	762	ALA	VAL	engineered mutation	UNP P09874

- Molecule 2 is 7-fluoranyl-4-[[[(3R)-pyrrolidin-3-yl]methoxy]-2H-phthalazin-1-one (three-letter code: 7U3) (formula: C₁₃H₁₄FN₃O₂).



Mol	Chain	Residues	Atoms					ZeroOcc	AltConf
2	A	1	Total	C	F	N	O	0	0
			19	13	1	3	2		
2	B	1	Total	C	F	N	O	0	0
			19	13	1	3	2		

- Molecule 1: Poly [ADP-ribose] polymerase 1



4 Data and refinement statistics

Property	Value	Source
Space group	P 21 21 21	Depositor
Cell constants a, b, c, α , β , γ	48.77Å 92.35Å 163.20Å 90.00° 90.00° 90.00°	Depositor
Resolution (Å)	81.60 – 2.20 81.60 – 2.20	Depositor EDS
% Data completeness (in resolution range)	99.8 (81.60-2.20) 99.7 (81.60-2.20)	Depositor EDS
R_{merge}	(Not available)	Depositor
R_{sym}	(Not available)	Depositor
$\langle I/\sigma(I) \rangle$ ¹	6.59 (at 2.20Å)	Xtriage
Refinement program	REFMAC 5.8.0123	Depositor
R, R_{free}	0.230 , 0.280 0.236 , 0.283	Depositor DCC
R_{free} test set	1855 reflections (4.85%)	wwPDB-VP
Wilson B-factor (Å ²)	19.2	Xtriage
Anisotropy	0.328	Xtriage
Bulk solvent k_{sol} (e/Å ³), B_{sol} (Å ²)	0.38 , 30.8	EDS
L-test for twinning ²	$\langle L \rangle = 0.49$, $\langle L^2 \rangle = 0.32$	Xtriage
Estimated twinning fraction	No twinning to report.	Xtriage
F_o, F_c correlation	0.90	EDS
Total number of atoms	5584	wwPDB-VP
Average B, all atoms (Å ²)	22.0	wwPDB-VP

Xtriage's analysis on translational NCS is as follows: *The largest off-origin peak in the Patterson function is 3.93% of the height of the origin peak. No significant pseudotranslation is detected.*

¹Intensities estimated from amplitudes.

²Theoretical values of $\langle |L| \rangle$, $\langle L^2 \rangle$ for acentric reflections are 0.5, 0.333 respectively for untwinned datasets, and 0.375, 0.2 for perfectly twinned datasets.

5 Model quality

5.1 Standard geometry

Bond lengths and bond angles in the following residue types are not validated in this section: 7U3

The Z score for a bond length (or angle) is the number of standard deviations the observed value is removed from the expected value. A bond length (or angle) with $|Z| > 5$ is considered an outlier worth inspection. RMSZ is the root-mean-square of all Z scores of the bond lengths (or angles).

Mol	Chain	Bond lengths		Bond angles	
		RMSZ	# Z >5	RMSZ	# Z >5
1	A	0.80	0/2837	0.90	7/3827 (0.2%)
1	B	0.77	0/2837	0.93	9/3827 (0.2%)
All	All	0.79	0/5674	0.91	16/7654 (0.2%)

Chiral center outliers are detected by calculating the chiral volume of a chiral center and verifying if the center is modelled as a planar moiety or with the opposite hand. A planarity outlier is detected by checking planarity of atoms in a peptide group, atoms in a mainchain group or atoms of a sidechain that are expected to be planar.

Mol	Chain	#Chirality outliers	#Planarity outliers
1	A	0	2
1	B	0	2
All	All	0	4

There are no bond length outliers.

All (16) bond angle outliers are listed below:

Mol	Chain	Res	Type	Atoms	Z	Observed(°)	Ideal(°)
1	B	841	ARG	NE-CZ-NH2	-10.82	114.89	120.30
1	A	841	ARG	NE-CZ-NH2	-8.55	116.03	120.30
1	B	841	ARG	NE-CZ-NH1	6.94	123.77	120.30
1	A	841	ARG	NE-CZ-NH1	6.83	123.71	120.30
1	B	878	ARG	NE-CZ-NH1	6.78	123.69	120.30
1	B	993	ASP	CB-CG-OD1	6.55	124.20	118.30
1	A	993	ASP	CB-CG-OD2	-6.52	112.43	118.30
1	B	766	ASP	CB-CG-OD1	6.33	123.99	118.30
1	B	993	ASP	CB-CG-OD2	-6.27	112.66	118.30
1	B	769	LEU	CB-CG-CD2	5.53	120.40	111.00
1	B	748	LYS	CB-CG-CD	5.48	125.84	111.60
1	B	748	LYS	CA-CB-CG	5.30	125.05	113.40

Continued on next page...

Continued from previous page...

Mol	Chain	Res	Type	Atoms	Z	Observed(°)	Ideal(°)
1	A	857	ARG	NE-CZ-NH1	5.22	122.91	120.30
1	A	858	ARG	NE-CZ-NH1	5.19	122.89	120.30
1	A	780	GLY	N-CA-C	-5.15	100.22	113.10
1	A	747	LYS	N-CA-C	5.05	124.63	111.00

There are no chirality outliers.

All (4) planarity outliers are listed below:

Mol	Chain	Res	Type	Group
1	A	746	MET	Peptide
1	A	747	LYS	Peptide
1	B	743	ASP	Peptide
1	B	750	PRO	Peptide

5.2 Too-close contacts ⓘ

In the following table, the Non-H and H(model) columns list the number of non-hydrogen atoms and hydrogen atoms in the chain respectively. The H(added) column lists the number of hydrogen atoms added and optimized by MolProbity. The Clashes column lists the number of clashes within the asymmetric unit, whereas Symm-Clashes lists symmetry-related clashes.

Mol	Chain	Non-H	H(model)	H(added)	Clashes	Symm-Clashes
1	A	2773	0	2806	9	2
1	B	2773	0	2806	14	2
2	A	19	0	0	0	0
2	B	19	0	0	0	0
All	All	5584	0	5612	22	2

The all-atom clashscore is defined as the number of clashes found per 1000 atoms (including hydrogen atoms). The all-atom clashscore for this structure is 2.

All (22) close contacts within the same asymmetric unit are listed below, sorted by their clash magnitude.

Atom-1	Atom-2	Interatomic distance (Å)	Clash overlap (Å)
1:B:934:HIS:HD1	1:B:983:SER:HG	1.42	0.68
1:A:717:GLN:OE1	1:A:887:THR:HB	2.02	0.60
1:B:770:ASP:OD1	1:B:878:ARG:NH2	2.37	0.57
1:A:841:ARG:HD2	1:A:873:LEU:O	2.06	0.55
1:B:841:ARG:HD2	1:B:873:LEU:O	2.07	0.54

Continued on next page...

Continued from previous page...

Atom-1	Atom-2	Interatomic distance (Å)	Clash overlap (Å)
1:A:886:VAL:HG11	1:B:934:HIS:CD2	2.42	0.53
1:B:919:ILE:HG21	1:B:1005:LEU:HD11	1.91	0.52
1:B:729:ILE:HG21	1:B:753:ASN:HA	1.93	0.51
1:B:726:ASP:HA	1:B:729:ILE:HB	1.98	0.46
1:A:770:ASP:OD1	1:A:878:ARG:NH2	2.48	0.46
1:B:747:LYS:O	1:B:748:LYS:HB2	2.16	0.46
1:A:821:THR:HB	1:A:900:MET:HA	1.98	0.45
1:B:674:LYS:HG3	1:B:790:ILE:HD11	2.00	0.44
1:B:723:GLY:O	1:B:725:SER:N	2.53	0.42
1:B:892:GLY:HA3	1:B:938:ILE:O	2.19	0.42
1:A:684:LYS:HA	1:A:687:VAL:HG22	2.02	0.41
1:A:934:HIS:ND1	1:A:983:SER:OG	2.51	0.41
1:B:744:PHE:CD2	1:B:749:PRO:CB	3.03	0.41
1:A:841:ARG:CD	1:A:873:LEU:O	2.69	0.41
1:B:675:MET:HE1	1:B:1004:LYS:HD2	2.02	0.41
1:A:872:ILE:HG21	1:A:920:LEU:HD11	2.04	0.40
1:B:717:GLN:OE1	1:B:887:THR:HB	2.21	0.40

All (2) symmetry-related close contacts are listed below. The label for Atom-2 includes the symmetry operator and encoded unit-cell translations to be applied.

Atom-1	Atom-2	Interatomic distance (Å)	Clash overlap (Å)
1:A:715:GLU:OE1	1:B:705:GLN:NE2[1_455]	2.03	0.17
1:A:911:SER:O	1:B:748:LYS:CG[4_445]	2.11	0.09

5.3 Torsion angles [i](#)

5.3.1 Protein backbone [i](#)

In the following table, the Percentiles column shows the percent Ramachandran outliers of the chain as a percentile score with respect to all X-ray entries followed by that with respect to entries of similar resolution.

The Analysed column shows the number of residues for which the backbone conformation was analysed, and the total number of residues.

Mol	Chain	Analysed	Favoured	Allowed	Outliers	Percentiles
1	A	350/352 (99%)	340 (97%)	5 (1%)	5 (1%)	11 8
1	B	350/352 (99%)	335 (96%)	10 (3%)	5 (1%)	11 8

Continued on next page...

Continued from previous page...

Mol	Chain	Analysed	Favoured	Allowed	Outliers	Percentiles	
All	All	700/704 (99%)	675 (96%)	15 (2%)	10 (1%)	11	8

All (10) Ramachandran outliers are listed below:

Mol	Chain	Res	Type
1	A	914	ASP
1	B	749	PRO
1	B	748	LYS
1	B	750	PRO
1	A	662	LYS
1	A	911	SER
1	B	721	SER
1	A	748	LYS
1	A	663	SER
1	B	663	SER

5.3.2 Protein sidechains ⓘ

In the following table, the Percentiles column shows the percent sidechain outliers of the chain as a percentile score with respect to all X-ray entries followed by that with respect to entries of similar resolution.

The Analysed column shows the number of residues for which the sidechain conformation was analysed, and the total number of residues.

Mol	Chain	Analysed	Rotameric	Outliers	Percentiles	
1	A	311/309 (101%)	299 (96%)	12 (4%)	32	41
1	B	311/309 (101%)	296 (95%)	15 (5%)	25	32
All	All	622/618 (101%)	595 (96%)	27 (4%)	28	36

All (27) residues with a non-rotameric sidechain are listed below:

Mol	Chain	Res	Type
1	A	700	LYS
1	A	778	LEU
1	A	817	TYR
1	A	858	ARG
1	A	914	ASP
1	A	939	SER
1	A	940	LYS
1	A	961	ASN

Continued on next page...

Continued from previous page...

Mol	Chain	Res	Type
1	A	962	ILE
1	A	963	SER
1	A	971	LEU
1	A	1006	LYS
1	B	667	LYS
1	B	700	LYS
1	B	702	SER
1	B	704	ARG
1	B	713	LEU
1	B	728	GLN
1	B	730	LEU
1	B	748	LYS
1	B	750	PRO
1	B	769	LEU
1	B	817	TYR
1	B	865	ARG
1	B	940	LYS
1	B	971	LEU
1	B	1011	THR

Sometimes sidechains can be flipped to improve hydrogen bonding and reduce clashes. All (5) such sidechains are listed below:

Mol	Chain	Res	Type
1	A	868	ASN
1	A	961	ASN
1	A	998	ASN
1	B	759	GLN
1	B	868	ASN

5.3.3 RNA ⓘ

There are no RNA molecules in this entry.

5.4 Non-standard residues in protein, DNA, RNA chains ⓘ

There are no non-standard protein/DNA/RNA residues in this entry.

5.5 Carbohydrates ⓘ

There are no monosaccharides in this entry.

5.6 Ligand geometry

2 ligands are modelled in this entry.

In the following table, the Counts columns list the number of bonds (or angles) for which Mogul statistics could be retrieved, the number of bonds (or angles) that are observed in the model and the number of bonds (or angles) that are defined in the Chemical Component Dictionary. The Link column lists molecule types, if any, to which the group is linked. The Z score for a bond length (or angle) is the number of standard deviations the observed value is removed from the expected value. A bond length (or angle) with $|Z| > 2$ is considered an outlier worth inspection. RMSZ is the root-mean-square of all Z scores of the bond lengths (or angles).

Mol	Type	Chain	Res	Link	Bond lengths			Bond angles		
					Counts	RMSZ	# $ Z > 2$	Counts	RMSZ	# $ Z > 2$
2	7U3	B	1101	-	20,21,21	2.71	6 (30%)	25,29,29	2.15	5 (20%)
2	7U3	A	1101	-	20,21,21	2.28	8 (40%)	25,29,29	1.91	4 (16%)

In the following table, the Chirals column lists the number of chiral outliers, the number of chiral centers analysed, the number of these observed in the model and the number defined in the Chemical Component Dictionary. Similar counts are reported in the Torsion and Rings columns. '-' means no outliers of that kind were identified.

Mol	Type	Chain	Res	Link	Chirals	Torsions	Rings
2	7U3	B	1101	-	-	0/5/12/12	0/3/3/3
2	7U3	A	1101	-	-	1/5/12/12	0/3/3/3

All (14) bond length outliers are listed below:

Mol	Chain	Res	Type	Atoms	Z	Observed(Å)	Ideal(Å)
2	B	1101	7U3	FAB-CAN	-7.37	1.18	1.36
2	B	1101	7U3	CAQ-CAO	-5.95	1.36	1.46
2	A	1101	7U3	NAL-NAJ	-4.70	1.26	1.38
2	B	1101	7U3	CAG-CAF	-4.33	1.46	1.53
2	A	1101	7U3	CAQ-CAO	-4.16	1.39	1.46
2	A	1101	7U3	CAR-CAP	-4.11	1.40	1.47
2	A	1101	7U3	CAP-NAL	3.56	1.41	1.35
2	B	1101	7U3	CAR-CAP	-3.45	1.41	1.47
2	A	1101	7U3	FAB-CAN	-3.24	1.28	1.36
2	B	1101	7U3	NAL-NAJ	-3.06	1.30	1.38
2	A	1101	7U3	CAG-CAF	-2.85	1.48	1.53
2	A	1101	7U3	OAM-CAO	2.24	1.38	1.34
2	A	1101	7U3	CAO-NAJ	2.24	1.34	1.30
2	B	1101	7U3	CAC-CAN	2.15	1.41	1.37

All (9) bond angle outliers are listed below:

Mol	Chain	Res	Type	Atoms	Z	Observed(°)	Ideal(°)
2	B	1101	7U3	CAP-NAL-NAJ	-6.73	120.35	127.98
2	A	1101	7U3	CAP-NAL-NAJ	-6.28	120.85	127.98
2	A	1101	7U3	CAO-NAJ-NAL	4.74	124.31	117.23
2	B	1101	7U3	CAO-NAJ-NAL	4.59	124.10	117.23
2	B	1101	7U3	FAB-CAN-CAC	3.29	124.12	118.54
2	B	1101	7U3	OAM-CAI-CAS	-2.93	103.11	108.56
2	B	1101	7U3	FAB-CAN-CAE	-2.91	114.10	118.25
2	A	1101	7U3	CAI-OAM-CAO	2.39	121.83	115.24
2	A	1101	7U3	CAR-CAP-NAL	2.35	117.79	115.03

There are no chirality outliers.

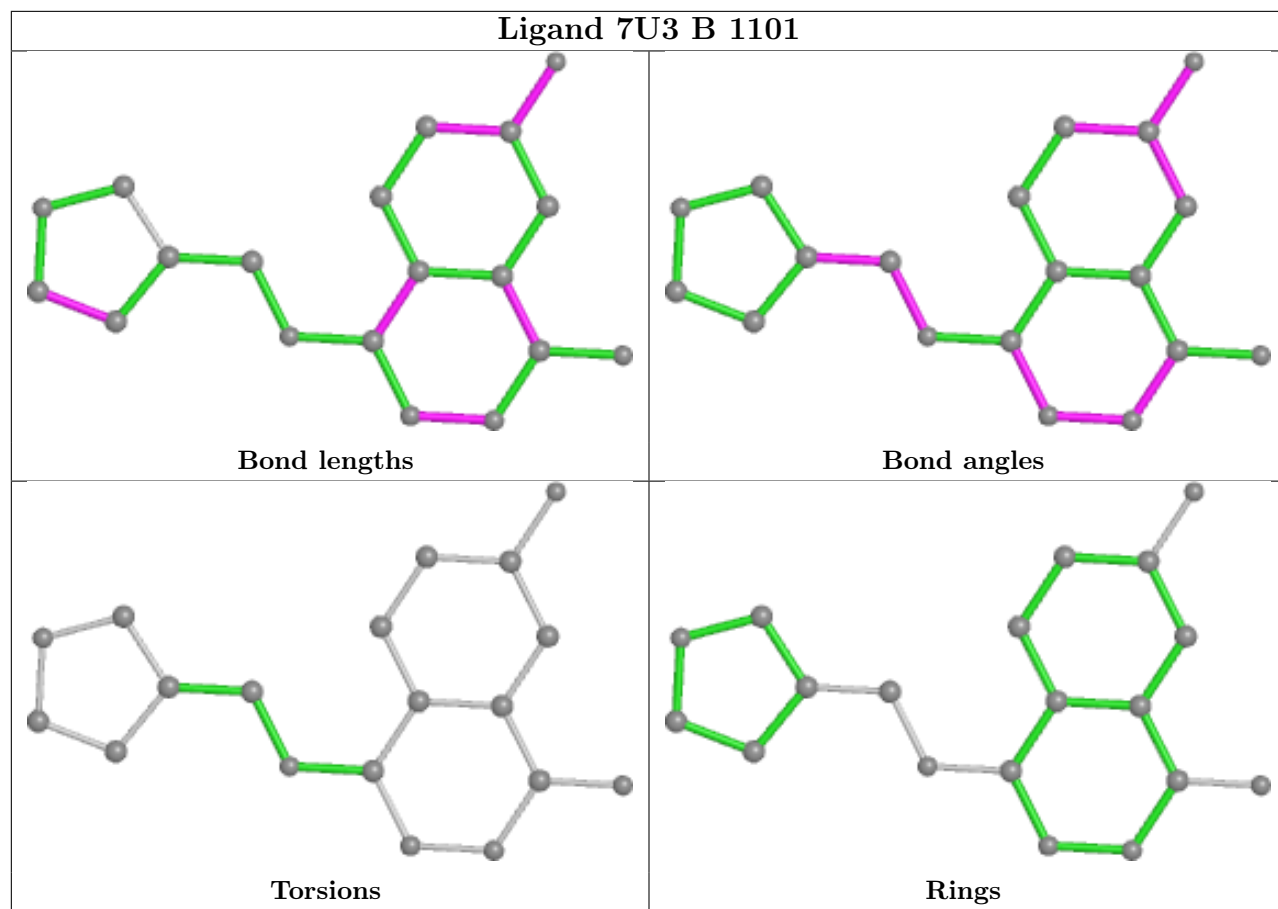
All (1) torsion outliers are listed below:

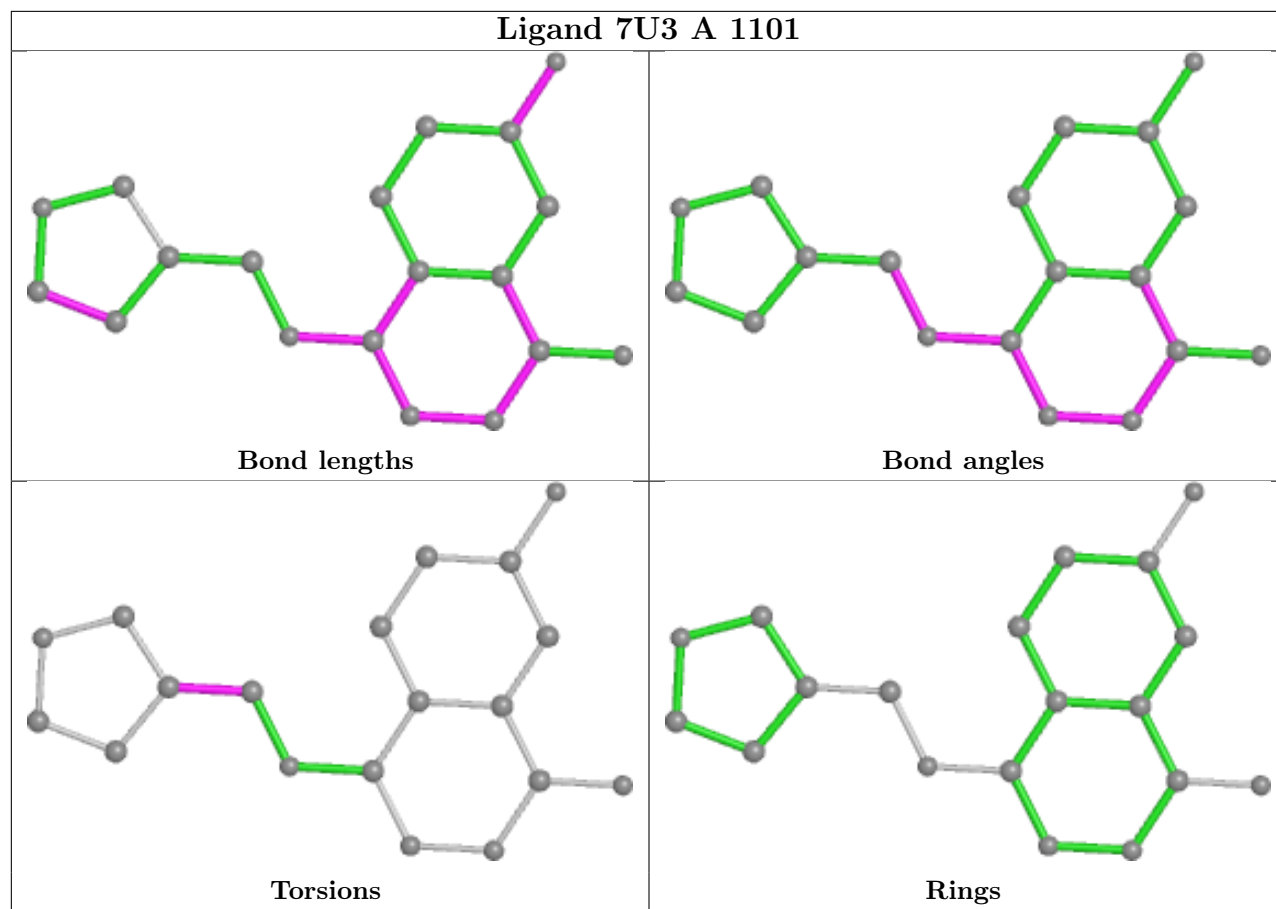
Mol	Chain	Res	Type	Atoms
2	A	1101	7U3	OAM-CAI-CAS-CAH

There are no ring outliers.

No monomer is involved in short contacts.

The following is a two-dimensional graphical depiction of Mogul quality analysis of bond lengths, bond angles, torsion angles, and ring geometry for all instances of the Ligand of Interest. In addition, ligands with molecular weight > 250 and outliers as shown on the validation Tables will also be included. For torsion angles, if less than 5% of the Mogul distribution of torsion angles is within 10 degrees of the torsion angle in question, then that torsion angle is considered an outlier. Any bond that is central to one or more torsion angles identified as an outlier by Mogul will be highlighted in the graph. For rings, the root-mean-square deviation (RMSD) between the ring in question and similar rings identified by Mogul is calculated over all ring torsion angles. If the average RMSD is greater than 60 degrees and the minimal RMSD between the ring in question and any Mogul-identified rings is also greater than 60 degrees, then that ring is considered an outlier. The outliers are highlighted in purple. The color gray indicates Mogul did not find sufficient equivalents in the CSD to analyse the geometry.





5.7 Other polymers [i](#)

There are no such residues in this entry.

5.8 Polymer linkage issues [i](#)

There are no chain breaks in this entry.

6 Fit of model and data

6.1 Protein, DNA and RNA chains

In the following table, the column labelled ‘#RSRZ > 2’ contains the number (and percentage) of RSRZ outliers, followed by percent RSRZ outliers for the chain as percentile scores relative to all X-ray entries and entries of similar resolution. The OWAB column contains the minimum, median, 95th percentile and maximum values of the occupancy-weighted average B-factor per residue. The column labelled ‘Q < 0.9’ lists the number of (and percentage) of residues with an average occupancy less than 0.9.

Mol	Chain	Analysed	<RSRZ>	#RSRZ>2	OWAB(Å ²)	Q<0.9
1	A	351/352 (99%)	-0.13	10 (2%) 53 51	6, 17, 41, 84	0
1	B	351/352 (99%)	0.27	22 (6%) 20 19	7, 20, 49, 169	0
All	All	702/704 (99%)	0.07	32 (4%) 32 31	6, 19, 44, 169	0

All (32) RSRZ outliers are listed below:

Mol	Chain	Res	Type	RSRZ
1	B	745	GLY	21.6
1	B	746	MET	13.8
1	B	747	LYS	13.4
1	B	1011	THR	10.9
1	B	749	PRO	9.3
1	B	748	LYS	9.3
1	A	661	MET	7.8
1	B	723	GLY	7.6
1	B	661	MET	7.2
1	B	725	SER	6.1
1	B	726	ASP	6.0
1	A	913	GLY	5.8
1	A	660	HIS	5.2
1	A	747	LYS	3.8
1	A	1011	THR	3.7
1	B	744	PHE	3.6
1	B	660	HIS	3.5
1	A	915	PRO	3.3
1	B	750	PRO	3.3
1	B	981	ASP	3.1
1	A	728	GLN	2.6
1	B	705	GLN	2.6
1	B	980	ASN	2.4
1	B	694	GLN	2.3

Continued on next page...

Continued from previous page...

Mol	Chain	Res	Type	RSRZ
1	B	722	GLN	2.3
1	A	914	ASP	2.3
1	B	827	ASN	2.2
1	B	731	ASP	2.1
1	B	662	LYS	2.1
1	A	743	ASP	2.1
1	B	752	LEU	2.1
1	A	939	SER	2.0

6.2 Non-standard residues in protein, DNA, RNA chains [i](#)

There are no non-standard protein/DNA/RNA residues in this entry.

6.3 Carbohydrates [i](#)

There are no monosaccharides in this entry.

6.4 Ligands [i](#)

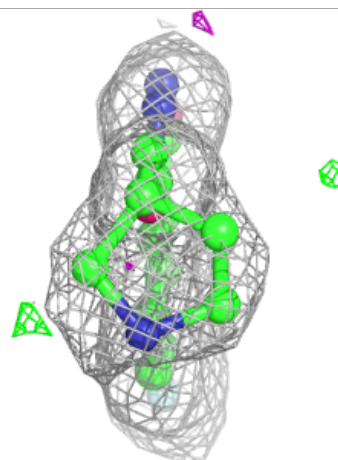
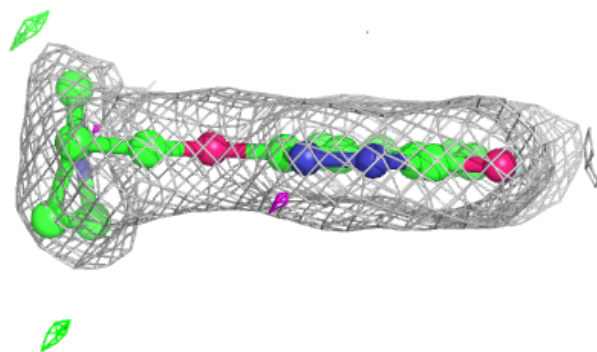
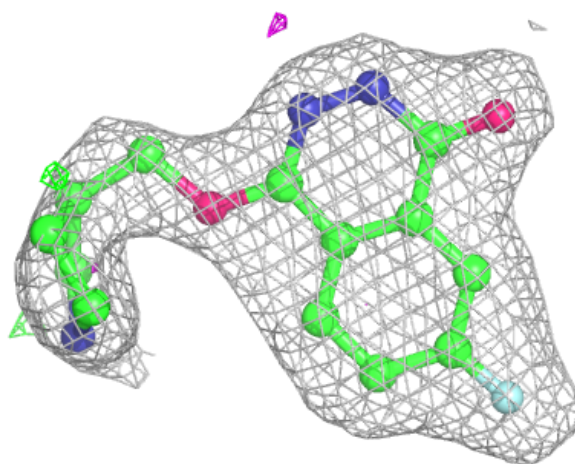
In the following table, the Atoms column lists the number of modelled atoms in the group and the number defined in the chemical component dictionary. The B-factors column lists the minimum, median, 95th percentile and maximum values of B factors of atoms in the group. The column labelled 'Q< 0.9' lists the number of atoms with occupancy less than 0.9.

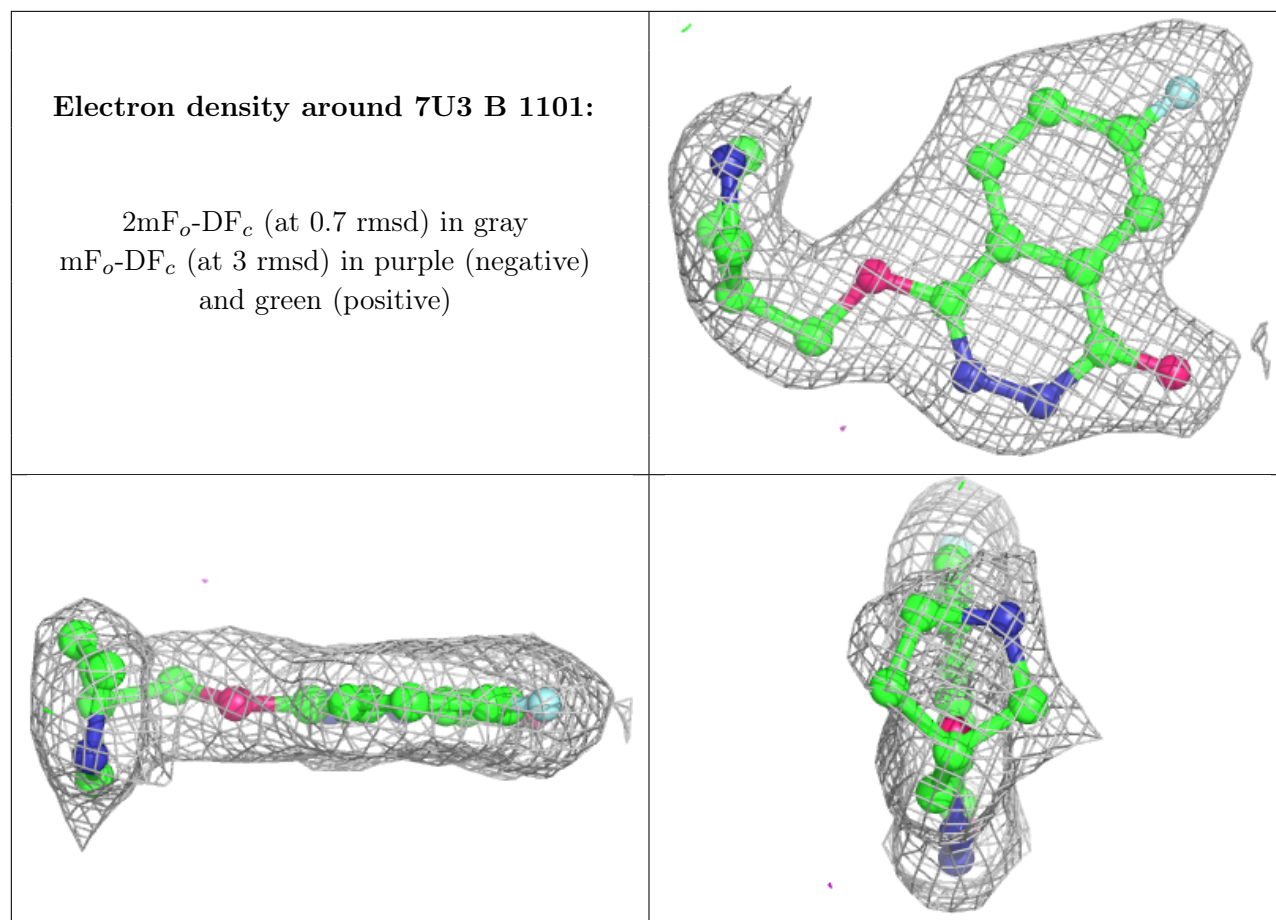
Mol	Type	Chain	Res	Atoms	RSCC	RSR	B-factors(\AA^2)	Q<0.9
2	7U3	A	1101	19/19	0.94	0.12	9,11,27,27	0
2	7U3	B	1101	19/19	0.96	0.11	10,11,23,24	0

The following is a graphical depiction of the model fit to experimental electron density of all instances of the Ligand of Interest. In addition, ligands with molecular weight > 250 and outliers as shown on the geometry validation Tables will also be included. Each fit is shown from different orientation to approximate a three-dimensional view.

Electron density around 7U3 A 1101:

$2mF_o-DF_c$ (at 0.7 rmsd) in gray
 mF_o-DF_c (at 3 rmsd) in purple (negative)
and green (positive)





6.5 Other polymers [i](#)

There are no such residues in this entry.