



Full wwPDB EM Validation Report ⓘ

Oct 6, 2024 – 06:22 AM JST

PDB ID : 7WK0
EMDB ID : EMD-32554
Title : Local refine of Omicron spike bitrimer with 6m6 antibody
Authors : Zhan, W.Q.; Zhang, X.; Chen, Z.G.; Sun, L.
Deposited on : 2022-01-08
Resolution : 3.32 Å(reported)

This is a Full wwPDB EM Validation Report for a publicly released PDB entry.

We welcome your comments at validation@mail.wwpdb.org

A user guide is available at

<https://www.wwpdb.org/validation/2017/EMValidationReportHelp>

with specific help available everywhere you see the ⓘ symbol.

The types of validation reports are described at

<http://www.wwpdb.org/validation/2017/FAQs#types>.

The following versions of software and data (see [references ⓘ](#)) were used in the production of this report:

EMDB validation analysis : 0.0.1.dev113
Mogul : 1.8.5 (274361), CSD as541be (2020)
MolProbity : 4.02b-467
Percentile statistics : 20231227.v01 (using entries in the PDB archive December 27th 2023)
MapQ : 1.9.13
Ideal geometry (proteins) : Engh & Huber (2001)
Ideal geometry (DNA, RNA) : Parkinson et al. (1996)
Validation Pipeline (wwPDB-VP) : 2.39

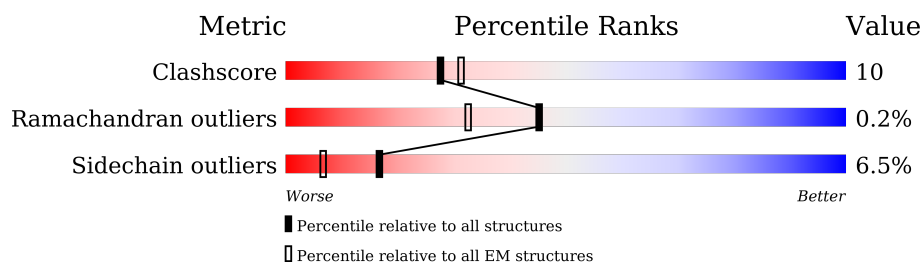
1 Overall quality at a glance

The following experimental techniques were used to determine the structure:

ELECTRON MICROSCOPY

The reported resolution of this entry is 3.32 Å.

Percentile scores (ranging between 0-100) for global validation metrics of the entry are shown in the following graphic. The table shows the number of entries on which the scores are based.



Metric	Whole archive (#Entries)	EM structures (#Entries)
Clashscore	210492	15764
Ramachandran outliers	207382	16835
Sidechain outliers	206894	16415

The table below summarises the geometric issues observed across the polymeric chains and their fit to the map. The red, orange, yellow and green segments of the bar indicate the fraction of residues that contain outliers for ≥ 3 , 2, 1 and 0 types of geometric quality criteria respectively. A grey segment represents the fraction of residues that are not modelled. The numeric value for each fraction is indicated below the corresponding segment, with a dot representing fractions $\leq 5\%$. The upper red bar (where present) indicates the fraction of residues that have poor fit to the EM map (all-atom inclusion $< 40\%$). The numeric value is given above the bar.

Mol	Chain	Length	Quality of chain
1	A	226	 75% 24% 6%
1	D	226	 80% 19% 6%
2	B	214	 64% 31% 6%
2	E	214	 73% 24% 7%
3	C	198	 75% 20% 6%
3	F	198	 73% 22% 5% 6%

2 Entry composition

There are 4 unique types of molecules in this entry. The entry contains 9724 atoms, of which 0 are hydrogens and 0 are deuteriums.

In the tables below, the AltConf column contains the number of residues with at least one atom in alternate conformation and the Trace column contains the number of residues modelled with at most 2 atoms.

- Molecule 1 is a protein called 6m6 heavy chain.

Mol	Chain	Residues	Atoms					AltConf	Trace
1	A	226	Total	C	N	O	S	0	0
			1699	1073	286	335	5		
1	D	226	Total	C	N	O	S	0	0
			1699	1073	286	335	5		

- Molecule 2 is a protein called 6m6 light chain.

Mol	Chain	Residues	Atoms					AltConf	Trace
2	B	210	Total	C	N	O	S	0	0
			1577	982	270	321	4		
2	E	210	Total	C	N	O	S	0	0
			1577	982	270	321	4		

- Molecule 3 is a protein called Spike protein S1.

Mol	Chain	Residues	Atoms					AltConf	Trace
3	C	196	Total	C	N	O	S	0	0
			1572	1014	266	284	8		
3	F	196	Total	C	N	O	S	0	0
			1572	1014	266	284	8		

There are 30 discrepancies between the modelled and reference sequences:

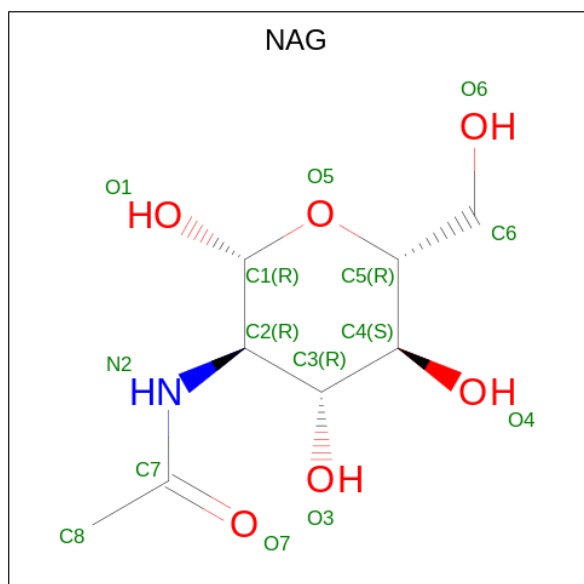
Chain	Residue	Modelled	Actual	Comment	Reference
C	339	ASP	GLY	variant	UNP P0DTC2
C	371	LEU	SER	variant	UNP P0DTC2
C	373	PRO	SER	variant	UNP P0DTC2
C	375	PHE	SER	variant	UNP P0DTC2
C	417	ASN	LYS	variant	UNP P0DTC2
C	440	LYS	ASN	variant	UNP P0DTC2
C	446	SER	GLY	variant	UNP P0DTC2
C	477	ASN	SER	variant	UNP P0DTC2
C	478	LYS	THR	variant	UNP P0DTC2

Continued on next page...

Continued from previous page...

Chain	Residue	Modelled	Actual	Comment	Reference
C	484	ALA	GLU	variant	UNP P0DTC2
C	493	ARG	GLN	variant	UNP P0DTC2
C	496	SER	GLY	variant	UNP P0DTC2
C	498	ARG	GLN	variant	UNP P0DTC2
C	501	TYR	ASN	variant	UNP P0DTC2
C	505	HIS	TYR	variant	UNP P0DTC2
F	339	ASP	GLY	variant	UNP P0DTC2
F	371	LEU	SER	variant	UNP P0DTC2
F	373	PRO	SER	variant	UNP P0DTC2
F	375	PHE	SER	variant	UNP P0DTC2
F	417	ASN	LYS	variant	UNP P0DTC2
F	440	LYS	ASN	variant	UNP P0DTC2
F	446	SER	GLY	variant	UNP P0DTC2
F	477	ASN	SER	variant	UNP P0DTC2
F	478	LYS	THR	variant	UNP P0DTC2
F	484	ALA	GLU	variant	UNP P0DTC2
F	493	ARG	GLN	variant	UNP P0DTC2
F	496	SER	GLY	variant	UNP P0DTC2
F	498	ARG	GLN	variant	UNP P0DTC2
F	501	TYR	ASN	variant	UNP P0DTC2
F	505	HIS	TYR	variant	UNP P0DTC2

- Molecule 4 is 2-acetamido-2-deoxy-beta-D-glucopyranose (three-letter code: NAG) (formula: $C_8H_{15}NO_6$).

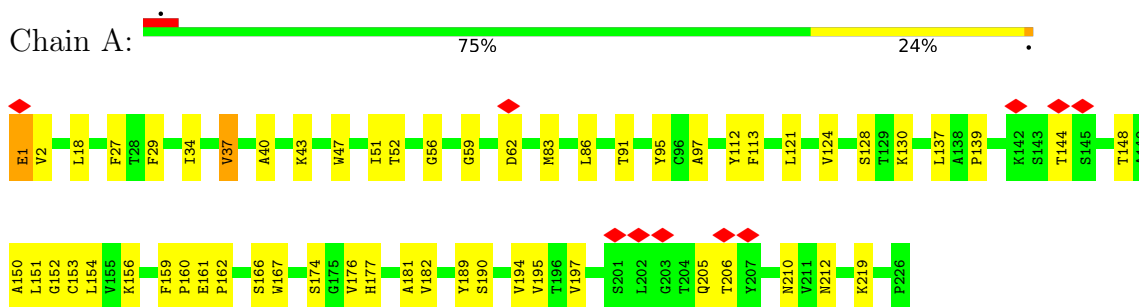


Mol	Chain	Residues	Atoms				AltConf
4	C	1	Total	C	N	O	0
			14	8	1	5	
4	F	1	Total	C	N	O	0
			14	8	1	5	

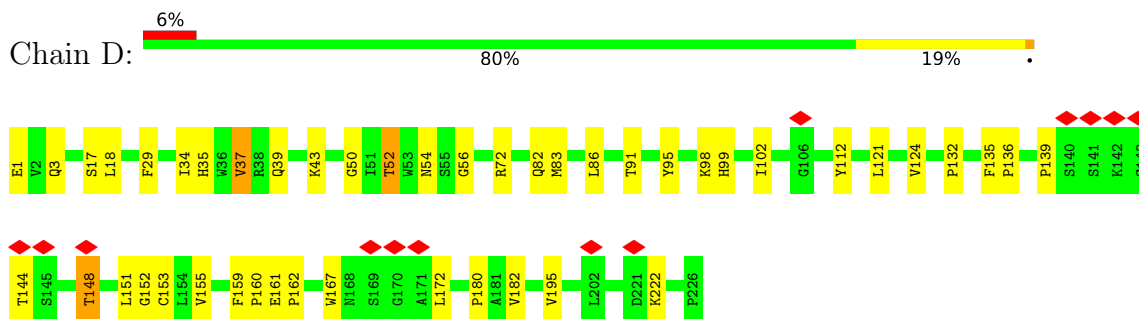
3 Residue-property plots [i](#)

These plots are drawn for all protein, RNA, DNA and oligosaccharide chains in the entry. The first graphic for a chain summarises the proportions of the various outlier classes displayed in the second graphic. The second graphic shows the sequence view annotated by issues in geometry and atom inclusion in map density. Residues are color-coded according to the number of geometric quality criteria for which they contain at least one outlier: green = 0, yellow = 1, orange = 2 and red = 3 or more. A red diamond above a residue indicates a poor fit to the EM map for this residue (all-atom inclusion < 40%). Stretches of 2 or more consecutive residues without any outlier are shown as a green connector. Residues present in the sample, but not in the model, are shown in grey.

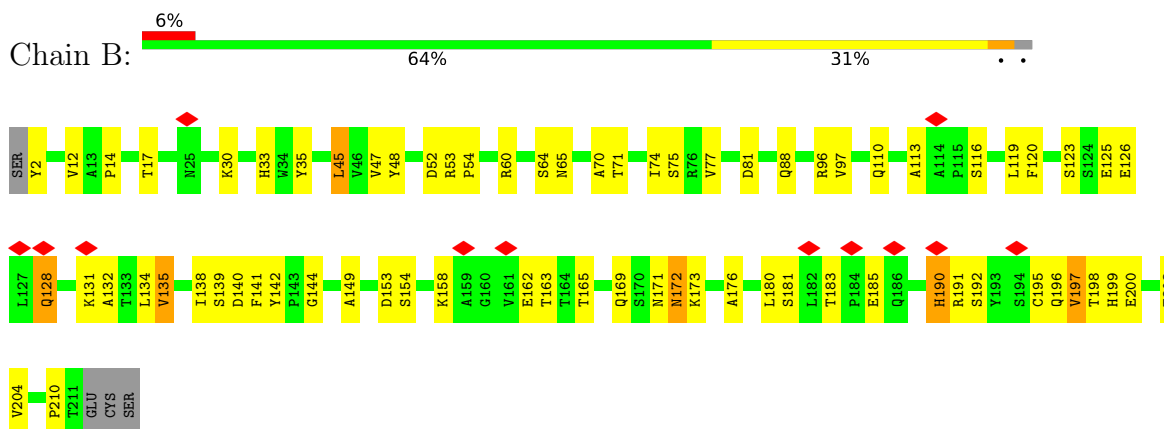
- Molecule 1: 6m6 heavy chain



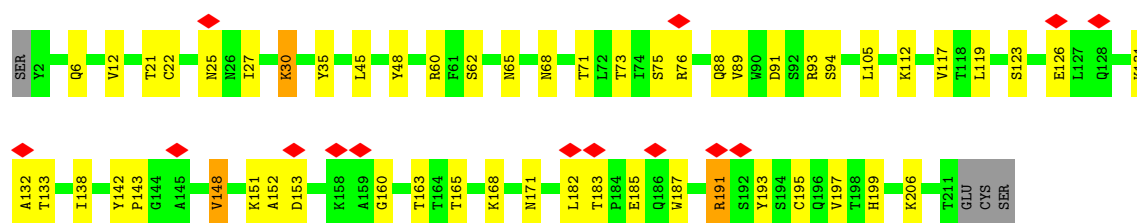
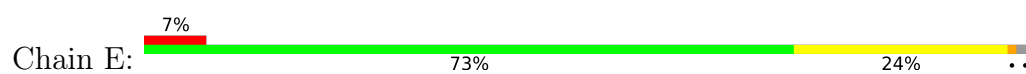
- Molecule 1: 6m6 heavy chain



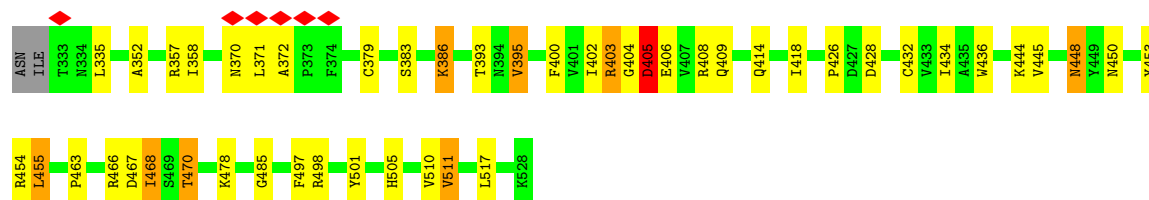
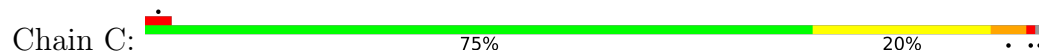
- Molecule 2: 6m6 light chain



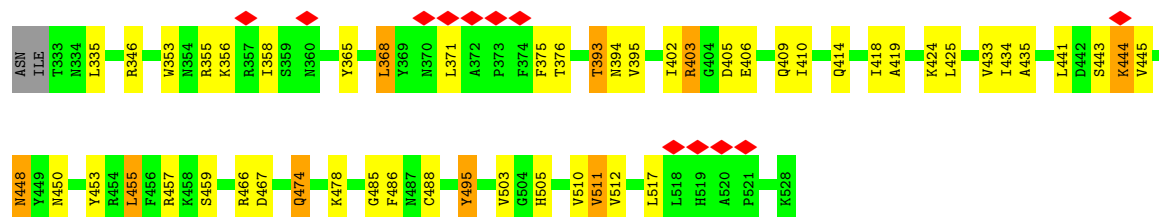
- Molecule 2: 6m6 light chain



• Molecule 3: Spike protein S1



• Molecule 3: Spike protein S1



4 Experimental information

Property	Value	Source
EM reconstruction method	SINGLE PARTICLE	Depositor
Imposed symmetry	POINT, Not provided	
Number of particles used	134249	Depositor
Resolution determination method	FSC 0.143 CUT-OFF	Depositor
CTF correction method	PHASE FLIPPING AND AMPLITUDE CORRECTION	Depositor
Microscope	FEI TITAN KRIOS	Depositor
Voltage (kV)	300	Depositor
Electron dose ($e^-/\text{\AA}^2$)	58	Depositor
Minimum defocus (nm)	1200	Depositor
Maximum defocus (nm)	2500	Depositor
Magnification	Not provided	
Image detector	GATAN K3 BIOQUANTUM (6k x 4k)	Depositor
Maximum map value	1.865	Depositor
Minimum map value	-0.002	Depositor
Average map value	0.000	Depositor
Map value standard deviation	0.010	Depositor
Recommended contour level	0.1	Depositor
Map size (Å)	510.72, 510.72, 510.72	wwPDB
Map dimensions	480, 480, 480	wwPDB
Map angles (°)	90.0, 90.0, 90.0	wwPDB
Pixel spacing (Å)	1.064, 1.064, 1.064	Depositor

5 Model quality [i](#)

5.1 Standard geometry [i](#)

Bond lengths and bond angles in the following residue types are not validated in this section: NAG

The Z score for a bond length (or angle) is the number of standard deviations the observed value is removed from the expected value. A bond length (or angle) with $|Z| > 5$ is considered an outlier worth inspection. RMSZ is the root-mean-square of all Z scores of the bond lengths (or angles).

Mol	Chain	Bond lengths		Bond angles	
		RMSZ	# Z >5	RMSZ	# Z >5
1	A	0.25	0/1742	0.46	0/2374
1	D	0.28	0/1742	0.46	0/2374
2	B	0.25	0/1616	0.45	0/2209
2	E	0.25	0/1616	0.44	0/2209
3	C	0.41	0/1619	0.51	0/2203
3	F	0.36	0/1619	0.45	0/2203
All	All	0.31	0/9954	0.46	0/13572

There are no bond length outliers.

There are no bond angle outliers.

There are no chirality outliers.

There are no planarity outliers.

5.2 Too-close contacts [i](#)

In the following table, the Non-H and H(model) columns list the number of non-hydrogen atoms and hydrogen atoms in the chain respectively. The H(added) column lists the number of hydrogen atoms added and optimized by MolProbity. The Clashes column lists the number of clashes within the asymmetric unit, whereas Symm-Clashes lists symmetry-related clashes.

Mol	Chain	Non-H	H(model)	H(added)	Clashes	Symm-Clashes
1	A	1699	0	1644	29	0
1	D	1699	0	1644	28	0
2	B	1577	0	1518	45	0
2	E	1577	0	1518	35	0
3	C	1572	0	1501	30	0
3	F	1572	0	1501	29	0
4	C	14	0	13	1	0

Continued on next page...

Continued from previous page...

Mol	Chain	Non-H	H(model)	H(added)	Clashes	Symm-Clashes
4	F	14	0	13	1	0
All	All	9724	0	9352	182	0

The all-atom clashscore is defined as the number of clashes found per 1000 atoms (including hydrogen atoms). The all-atom clashscore for this structure is 10.

All (182) close contacts within the same asymmetric unit are listed below, sorted by their clash magnitude.

Atom-1	Atom-2	Interatomic distance (Å)	Clash overlap (Å)
3:C:371:LEU:HD21	3:C:436:TRP:CZ2	1.92	1.04
3:C:371:LEU:HD21	3:C:436:TRP:CE2	2.12	0.84
3:F:371:LEU:HG	4:F:601:NAG:H3	1.66	0.77
2:E:119:LEU:HD23	2:E:206:LYS:HB3	1.71	0.71
3:C:371:LEU:HD21	3:C:436:TRP:CH2	2.28	0.69
1:A:166:SER:HB3	1:A:210:ASN:HB2	1.75	0.68
1:A:144:THR:H	1:A:148:THR:HG21	1.59	0.68
2:E:30:LYS:HG3	2:E:89:VAL:HG13	1.75	0.67
1:A:152:GLY:HA2	1:A:167:TRP:HH2	1.61	0.66
1:D:180:PRO:HG2	2:E:168:LYS:HG3	1.79	0.64
2:B:140:ASP:HB3	2:B:173:LYS:HB3	1.79	0.64
2:B:47:VAL:HG22	2:B:53:ARG:HB3	1.78	0.64
3:F:403:ARG:HG2	3:F:505:HIS:HA	1.80	0.64
1:D:91:THR:HG22	1:D:124:VAL:H	1.63	0.64
3:F:409:GLN:HA	3:F:414:GLN:HG2	1.79	0.63
3:F:409:GLN:HE22	3:F:418:ILE:H	1.47	0.63
1:D:182:VAL:HB	2:E:165:THR:HB	1.80	0.63
1:D:182:VAL:HG21	2:E:163:THR:HB	1.81	0.62
3:C:358:ILE:HB	3:C:395:VAL:HG13	1.80	0.62
2:B:60:ARG:NH2	2:B:81:ASP:OD2	2.33	0.61
2:E:119:LEU:HD21	2:E:195:CYS:HB3	1.84	0.60
1:D:172:LEU:HD21	1:D:195:VAL:HG11	1.82	0.59
2:B:138:ILE:HD11	2:B:176:ALA:HB3	1.84	0.58
2:B:17:THR:HG22	2:B:75:SER:HA	1.84	0.58
2:B:153:ASP:O	2:B:191:ARG:NH2	2.37	0.58
2:B:197:VAL:HG13	2:B:204:VAL:HB	1.86	0.58
2:E:35:TYR:OH	2:E:88:GLN:NE2	2.35	0.58
1:D:54:ASN:ND2	3:F:346:ARG:O	2.37	0.57
2:E:60:ARG:NH1	2:E:76:ARG:O	2.38	0.57
3:F:409:GLN:HB3	3:F:419:ALA:HB2	1.85	0.57
2:E:148:VAL:HG12	2:E:197:VAL:HG12	1.87	0.57
2:B:33:HIS:HD2	2:B:48:TYR:HB2	1.70	0.56

Continued on next page...

Continued from previous page...

Atom-1	Atom-2	Interatomic distance (Å)	Clash overlap (Å)
1:A:151:LEU:HG	1:A:197:VAL:HG21	1.88	0.56
3:C:448:ASN:HB2	3:C:450:ASN:OD1	2.05	0.56
1:D:132:PRO:HB3	1:D:155:VAL:HG13	1.88	0.55
2:B:116:SER:HB3	2:B:139:SER:HB2	1.88	0.55
3:F:353:TRP:O	3:F:466:ARG:NH1	2.39	0.55
1:D:17:SER:OG	1:D:82:GLN:NE2	2.40	0.55
2:B:123:SER:N	2:B:126:GLU:OE2	2.36	0.54
1:D:1:GLU:O	1:D:3:GLN:NE2	2.39	0.54
3:F:402:ILE:HD12	3:F:406:GLU:O	2.07	0.54
2:E:25:ASN:O	2:E:68:ASN:ND2	2.40	0.54
1:A:83:MET:HB3	1:A:86:LEU:HD21	1.89	0.54
1:D:159:PHE:HB3	1:D:160:PRO:HD3	1.90	0.54
2:B:119:LEU:HD21	2:B:195:CYS:HB3	1.88	0.54
3:C:409:GLN:HE22	3:C:418:ILE:H	1.55	0.53
3:F:434:ILE:HB	3:F:511:VAL:HG13	1.89	0.53
3:C:371:LEU:CD2	3:C:436:TRP:CH2	2.91	0.53
2:E:21:THR:HG22	2:E:71:THR:HG22	1.90	0.53
1:A:212:ASN:OD1	1:A:219:LYS:NZ	2.41	0.53
2:B:65:ASN:HD22	2:B:70:ALA:HB2	1.73	0.53
2:B:169:GLN:HE22	2:B:172:ASN:HA	1.74	0.53
1:A:159:PHE:HB3	1:A:160:PRO:HD3	1.90	0.52
2:B:64:SER:OG	2:B:71:THR:OG1	2.26	0.52
3:C:468:ILE:H	3:C:468:ILE:HD13	1.74	0.52
1:D:83:MET:HB3	1:D:86:LEU:HD21	1.90	0.52
3:C:434:ILE:HB	3:C:511:VAL:HG13	1.90	0.52
2:B:113:ALA:HB3	2:B:142:TYR:H	1.73	0.52
2:B:132:ALA:HB2	2:B:185:GLU:HG3	1.90	0.52
1:A:29:PHE:HE1	1:A:34:ILE:HD12	1.75	0.52
2:B:120:PHE:HB2	2:B:135:VAL:HG13	1.92	0.52
1:A:182:VAL:HB	2:B:165:THR:HB	1.92	0.52
1:A:112:TYR:HA	2:B:88:GLN:HE22	1.76	0.51
3:C:400:PHE:HD2	3:C:402:ILE:HG23	1.75	0.51
2:E:62:SER:OG	2:E:73:THR:OG1	2.23	0.51
1:D:152:GLY:HA2	1:D:167:TRP:HZ2	1.76	0.51
3:F:358:ILE:HB	3:F:395:VAL:HG13	1.92	0.51
3:F:457:ARG:NH2	3:F:459:SER:O	2.40	0.51
3:C:454:ARG:NH1	3:C:467:ASP:O	2.44	0.51
2:E:126:GLU:OE1	2:E:133:THR:OG1	2.29	0.50
3:F:448:ASN:C	3:F:450:ASN:H	2.15	0.50
1:A:161:GLU:N	1:A:162:PRO:HD3	2.27	0.49
3:F:467:ASP:OD1	3:F:467:ASP:N	2.45	0.49

Continued on next page...

Continued from previous page...

Atom-1	Atom-2	Interatomic distance (Å)	Clash overlap (Å)
2:E:160:GLY:HA2	2:E:182:LEU:HD13	1.95	0.49
2:E:30:LYS:HD2	2:E:30:LYS:H	1.77	0.49
2:B:149:ALA:HB3	2:B:196:GLN:HB2	1.95	0.49
3:C:428:ASP:OD1	3:C:428:ASP:N	2.46	0.48
1:A:181:ALA:HB1	1:A:189:TYR:HB3	1.94	0.48
1:A:91:THR:HG22	1:A:124:VAL:H	1.77	0.48
2:B:162:GLU:HG2	2:B:180:LEU:HB2	1.94	0.48
3:C:498:ARG:NH2	3:C:501:TYR:OH	2.46	0.48
3:F:444:LYS:H	3:F:444:LYS:HG3	1.34	0.48
2:B:192:SER:HB2	2:B:210:PRO:HB3	1.95	0.48
3:F:433:VAL:HG12	3:F:512:VAL:HG22	1.94	0.48
2:B:14:PRO:HA	2:B:77:VAL:HG13	1.96	0.48
2:B:52:ASP:OD1	2:B:52:ASP:N	2.47	0.48
3:F:402:ILE:CD1	3:F:510:VAL:HG21	2.44	0.48
1:A:128:SER:OG	1:A:130:LYS:NZ	2.43	0.48
1:D:139:PRO:HB3	1:D:151:LEU:HB3	1.96	0.48
1:A:37:VAL:HG13	1:A:95:TYR:HB2	1.96	0.47
2:E:91:ASP:OD2	2:E:94:SER:OG	2.28	0.47
3:F:402:ILE:HD11	3:F:510:VAL:HG21	1.97	0.47
1:D:35:HIS:HA	1:D:50:GLY:HA2	1.97	0.47
1:D:135:PHE:HE2	2:E:131:LYS:HE2	1.79	0.47
1:A:182:VAL:HG21	2:B:163:THR:HB	1.97	0.47
2:B:154:SER:HB2	2:B:191:ARG:HH21	1.80	0.47
1:D:98:LYS:HG2	1:D:99:HIS:H	1.81	0.46
2:E:143:PRO:HD2	2:E:199:HIS:CE1	2.49	0.46
1:A:139:PRO:HB3	1:A:151:LEU:HB3	1.97	0.46
3:F:393:THR:OG1	3:F:394:ASN:ND2	2.48	0.46
3:C:393:THR:HG22	3:C:517:LEU:HA	1.98	0.46
3:C:467:ASP:OD1	3:C:467:ASP:N	2.46	0.46
2:E:123:SER:HB3	2:E:126:GLU:HG2	1.98	0.46
2:B:35:TYR:OH	2:B:88:GLN:NE2	2.49	0.46
1:A:40:ALA:HB3	1:A:43:LYS:HB3	1.98	0.45
1:D:152:GLY:HA2	1:D:167:TRP:CZ2	2.50	0.45
3:C:453:TYR:HE2	3:C:455:LEU:HD23	1.81	0.45
2:B:45:LEU:HB3	2:B:54:PRO:HG2	1.98	0.45
2:B:141:PHE:HE1	2:B:144:GLY:HA2	1.81	0.45
3:C:501:TYR:HB3	3:C:505:HIS:HB2	1.99	0.45
2:E:117:VAL:O	2:E:206:LYS:NZ	2.49	0.45
3:C:403:ARG:HG3	3:C:497:PHE:HE1	1.82	0.45
3:C:352:ALA:HA	3:C:466:ARG:HD3	1.99	0.44
3:C:404:GLY:C	3:C:406:GLU:H	2.21	0.44

Continued on next page...

Continued from previous page...

Atom-1	Atom-2	Interatomic distance (Å)	Clash overlap (Å)
1:D:135:PHE:CG	2:E:126:GLU:HB3	2.52	0.44
2:E:142:TYR:HB3	2:E:143:PRO:HD3	2.00	0.44
2:B:131:LYS:HA	2:B:131:LYS:HD2	1.86	0.44
3:C:402:ILE:HD11	3:C:510:VAL:HG21	2.00	0.44
1:D:52:THR:O	1:D:72:ARG:NH2	2.51	0.44
1:A:47:TRP:CG	2:B:97:VAL:HB	2.53	0.44
2:E:60:ARG:HB3	2:E:75:SER:HB3	1.99	0.43
2:B:198:THR:HG23	2:B:203:THR:HB	1.99	0.43
3:F:474:GLN:HE21	3:F:474:GLN:HB3	1.61	0.43
3:C:426:PRO:HG3	3:C:463:PRO:HB3	2.01	0.43
1:D:99:HIS:CE1	1:D:112:TYR:H	2.36	0.43
3:F:353:TRP:HZ3	3:F:355:ARG:HH11	1.66	0.43
1:A:1:GLU:HB3	1:A:2:VAL:H	1.62	0.43
1:A:51:ILE:HG23	1:A:56:GLY:H	1.83	0.43
1:A:174:SER:O	1:A:176:VAL:HG22	2.19	0.43
2:E:12:VAL:HG12	2:E:105:LEU:HD11	2.00	0.43
3:C:485:GLY:HA2	3:F:503:VAL:HG12	2.01	0.43
2:E:45:LEU:HD21	2:E:48:TYR:HB3	2.01	0.43
1:D:144:THR:H	1:D:148:THR:HG21	1.84	0.43
2:E:6:GLN:HG2	2:E:22:CYS:SG	2.59	0.43
1:A:156:LYS:HG3	1:A:190:SER:HB2	2.01	0.43
2:B:183:THR:C	2:B:185:GLU:H	2.21	0.43
2:E:206:LYS:HB2	2:E:206:LYS:HZ2	1.84	0.43
2:B:128:GLN:NE2	2:B:128:GLN:H	2.17	0.43
1:D:39:GLN:HE21	1:D:95:TYR:HE2	1.66	0.43
2:E:153:ASP:HA	2:E:191:ARG:HB2	2.00	0.43
3:C:405:ASP:OD1	3:C:405:ASP:N	2.51	0.42
3:F:435:ALA:HB2	3:F:510:VAL:HG22	1.99	0.42
3:C:379:CYS:HA	3:C:432:CYS:HA	2.01	0.42
1:D:29:PHE:HE1	1:D:34:ILE:HD12	1.83	0.42
2:B:172:ASN:O	2:B:172:ASN:ND2	2.44	0.42
1:A:137:LEU:HD21	1:A:154:LEU:HD22	2.01	0.42
2:B:190:HIS:CE1	2:B:191:ARG:HE	2.38	0.42
1:A:150:ALA:HB1	1:A:194:VAL:HG13	2.01	0.42
3:F:485:GLY:N	3:F:488:CYS:HB2	2.35	0.42
1:A:27:PHE:HZ	1:A:34:ILE:HD11	1.84	0.42
3:F:410:ILE:HG23	3:F:425:LEU:HD11	2.02	0.42
2:B:134:LEU:H	2:B:181:SER:HB2	1.85	0.42
2:B:171:ASN:O	2:B:171:ASN:ND2	2.53	0.42
3:C:470:THR:O	3:C:470:THR:OG1	2.33	0.42
3:F:365:TYR:HA	3:F:368:LEU:HD21	2.00	0.42

Continued on next page...

Continued from previous page...

Atom-1	Atom-2	Interatomic distance (Å)	Clash overlap (Å)
1:A:59:GLY:HA2	3:C:450:ASN:HD21	1.84	0.41
1:D:37:VAL:HG13	1:D:95:TYR:HB2	2.02	0.41
2:B:154:SER:HB2	2:B:191:ARG:NH2	2.35	0.41
2:B:125:GLU:HA	2:B:128:GLN:HE22	1.84	0.41
2:E:75:SER:OG	2:E:76:ARG:N	2.53	0.41
2:E:112:LYS:HE2	2:E:112:LYS:HB3	1.91	0.41
2:E:152:ALA:HB1	2:E:193:TYR:CD2	2.55	0.41
1:D:135:PHE:CZ	2:E:131:LYS:HG3	2.56	0.41
1:D:161:GLU:N	1:D:162:PRO:HD3	2.35	0.41
1:D:136:PRO:HD3	1:D:222:LYS:HZ1	1.86	0.41
3:C:383:SER:HB3	3:C:386:LYS:HB2	2.02	0.41
2:B:199:HIS:NE2	2:B:200:GLU:OE2	2.53	0.41
2:E:27:ILE:HG13	2:E:65:ASN:HD21	1.85	0.41
2:B:12:VAL:HG13	2:B:77:VAL:HG11	2.03	0.41
1:A:62:ASP:OD2	2:B:96:ARG:NH2	2.54	0.41
1:D:54:ASN:O	1:D:56:GLY:N	2.51	0.41
3:F:403:ARG:HD3	3:F:495:TYR:CE1	2.55	0.41
2:B:134:LEU:HB3	2:B:181:SER:HB2	2.03	0.41
2:E:171:ASN:O	2:E:171:ASN:ND2	2.53	0.41
3:F:453:TYR:HE2	3:F:455:LEU:HD23	1.86	0.41
2:B:110:GLN:HB2	2:B:142:TYR:CZ	2.56	0.40
1:A:97:ALA:HB1	1:A:113:PHE:HB3	2.03	0.40
3:F:448:ASN:C	3:F:450:ASN:N	2.74	0.40
3:C:408:ARG:NH1	3:C:414:GLN:HE21	2.20	0.40
2:E:132:ALA:HB2	2:E:185:GLU:HG3	2.04	0.40
3:C:370:ASN:HB2	4:C:601:NAG:H3	2.04	0.40
3:F:356:LYS:NZ	3:F:358:ILE:HG12	2.36	0.40

There are no symmetry-related clashes.

5.3 Torsion angles [i](#)

5.3.1 Protein backbone [i](#)

In the following table, the Percentiles column shows the percent Ramachandran outliers of the chain as a percentile score with respect to all PDB entries followed by that with respect to all EM entries.

The Analysed column shows the number of residues for which the backbone conformation was analysed, and the total number of residues.

Mol	Chain	Analysed	Favoured	Allowed	Outliers	Percentiles	
1	A	224/226 (99%)	193 (86%)	31 (14%)	0	100	100
1	D	224/226 (99%)	189 (84%)	35 (16%)	0	100	100
2	B	208/214 (97%)	176 (85%)	32 (15%)	0	100	100
2	E	208/214 (97%)	176 (85%)	32 (15%)	0	100	100
3	C	194/198 (98%)	180 (93%)	12 (6%)	2 (1%)	13	42
3	F	194/198 (98%)	182 (94%)	11 (6%)	1 (0%)	25	57
All	All	1252/1276 (98%)	1096 (88%)	153 (12%)	3 (0%)	45	72

All (3) Ramachandran outliers are listed below:

Mol	Chain	Res	Type
3	C	405	ASP
3	F	448	ASN
3	C	372	ALA

5.3.2 Protein sidechains ⓘ

In the following table, the Percentiles column shows the percent sidechain outliers of the chain as a percentile score with respect to all PDB entries followed by that with respect to all EM entries.

The Analysed column shows the number of residues for which the sidechain conformation was analysed, and the total number of residues.

Mol	Chain	Analysed	Rotameric	Outliers	Percentiles	
1	A	186/186 (100%)	176 (95%)	10 (5%)	18	46
1	D	186/186 (100%)	178 (96%)	8 (4%)	25	53
2	B	176/180 (98%)	166 (94%)	10 (6%)	17	45
2	E	176/180 (98%)	168 (96%)	8 (4%)	23	52
3	C	170/173 (98%)	156 (92%)	14 (8%)	9	32
3	F	170/173 (98%)	151 (89%)	19 (11%)	5	19
All	All	1064/1078 (99%)	995 (94%)	69 (6%)	17	40

All (69) residues with a non-rotameric sidechain are listed below:

Mol	Chain	Res	Type
1	A	1	GLU
1	A	18	LEU

Continued on next page...

Continued from previous page...

Mol	Chain	Res	Type
1	A	37	VAL
1	A	52	THR
1	A	121	LEU
1	A	153	CYS
1	A	177	HIS
1	A	195	VAL
1	A	205	GLN
1	A	206	THR
2	B	2	TYR
2	B	30	LYS
2	B	45	LEU
2	B	74	ILE
2	B	128	GLN
2	B	135	VAL
2	B	158	LYS
2	B	172	ASN
2	B	190	HIS
2	B	197	VAL
3	C	335	LEU
3	C	357	ARG
3	C	386	LYS
3	C	395	VAL
3	C	403	ARG
3	C	405	ASP
3	C	444	LYS
3	C	445	VAL
3	C	448	ASN
3	C	455	LEU
3	C	468	ILE
3	C	470	THR
3	C	478	LYS
3	C	511	VAL
1	D	18	LEU
1	D	37	VAL
1	D	43	LYS
1	D	52	THR
1	D	102	ILE
1	D	121	LEU
1	D	148	THR
1	D	153	CYS
2	E	30	LYS
2	E	93	ARG

Continued on next page...

Continued from previous page...

Mol	Chain	Res	Type
2	E	138	ILE
2	E	148	VAL
2	E	151	LYS
2	E	183	THR
2	E	187	TRP
2	E	191	ARG
3	F	335	LEU
3	F	368	LEU
3	F	375	PHE
3	F	376	THR
3	F	393	THR
3	F	403	ARG
3	F	405	ASP
3	F	424	LYS
3	F	441	LEU
3	F	443	SER
3	F	444	LYS
3	F	445	VAL
3	F	455	LEU
3	F	474	GLN
3	F	478	LYS
3	F	486	PHE
3	F	495	TYR
3	F	511	VAL
3	F	517	LEU

Sometimes sidechains can be flipped to improve hydrogen bonding and reduce clashes. All (24) such sidechains are listed below:

Mol	Chain	Res	Type
1	A	39	GLN
1	A	168	ASN
2	B	33	HIS
2	B	37	GLN
2	B	68	ASN
2	B	88	GLN
2	B	110	GLN
2	B	128	GLN
2	B	190	HIS
3	C	388	ASN
3	C	409	GLN
3	C	448	ASN
1	D	39	GLN

Continued on next page...

Continued from previous page...

Mol	Chain	Res	Type
1	D	82	GLN
1	D	118	GLN
2	E	37	GLN
2	E	68	ASN
2	E	88	GLN
2	E	130	ASN
2	E	172	ASN
3	F	409	GLN
3	F	448	ASN
3	F	450	ASN
3	F	474	GLN

5.3.3 RNA ⓘ

There are no RNA molecules in this entry.

5.4 Non-standard residues in protein, DNA, RNA chains ⓘ

There are no non-standard protein/DNA/RNA residues in this entry.

5.5 Carbohydrates ⓘ

There are no oligosaccharides in this entry.

5.6 Ligand geometry ⓘ

2 ligands are modelled in this entry.

In the following table, the Counts columns list the number of bonds (or angles) for which Mogul statistics could be retrieved, the number of bonds (or angles) that are observed in the model and the number of bonds (or angles) that are defined in the Chemical Component Dictionary. The Link column lists molecule types, if any, to which the group is linked. The Z score for a bond length (or angle) is the number of standard deviations the observed value is removed from the expected value. A bond length (or angle) with $|Z| > 2$ is considered an outlier worth inspection. RMSZ is the root-mean-square of all Z scores of the bond lengths (or angles).

Mol	Type	Chain	Res	Link	Bond lengths			Bond angles		
					Counts	RMSZ	$\# Z > 2$	Counts	RMSZ	$\# Z > 2$
4	NAG	C	601	3	14,14,15	0.34	0	17,19,21	1.09	1 (5%)
4	NAG	F	601	3	14,14,15	0.32	0	17,19,21	1.26	2 (11%)

In the following table, the Chirals column lists the number of chiral outliers, the number of chiral centers analysed, the number of these observed in the model and the number defined in the Chemical Component Dictionary. Similar counts are reported in the Torsion and Rings columns. '-' means no outliers of that kind were identified.

Mol	Type	Chain	Res	Link	Chirals	Torsions	Rings
4	NAG	C	601	3	-	0/6/23/26	0/1/1/1
4	NAG	F	601	3	-	4/6/23/26	0/1/1/1

There are no bond length outliers.

All (3) bond angle outliers are listed below:

Mol	Chain	Res	Type	Atoms	Z	Observed(°)	Ideal(°)
4	C	601	NAG	C1-O5-C5	3.83	117.38	112.19
4	F	601	NAG	C1-O5-C5	3.77	117.30	112.19
4	F	601	NAG	C1-C2-N2	-2.16	106.80	110.49

There are no chirality outliers.

All (4) torsion outliers are listed below:

Mol	Chain	Res	Type	Atoms
4	F	601	NAG	O7-C7-N2-C2
4	F	601	NAG	C8-C7-N2-C2
4	F	601	NAG	C1-C2-N2-C7
4	F	601	NAG	C3-C2-N2-C7

There are no ring outliers.

2 monomers are involved in 2 short contacts:

Mol	Chain	Res	Type	Clashes	Symm-Clashes
4	C	601	NAG	1	0
4	F	601	NAG	1	0

5.7 Other polymers [i](#)

There are no such residues in this entry.

5.8 Polymer linkage issues [i](#)

There are no chain breaks in this entry.

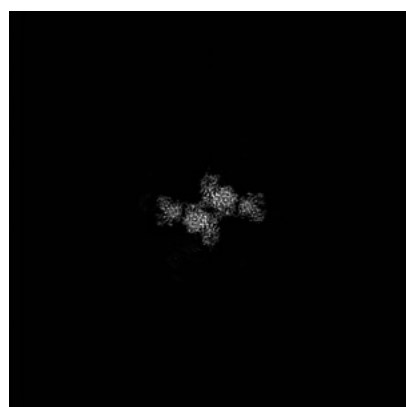
6 Map visualisation [i](#)

This section contains visualisations of the EMDB entry EMD-32554. These allow visual inspection of the internal detail of the map and identification of artifacts.

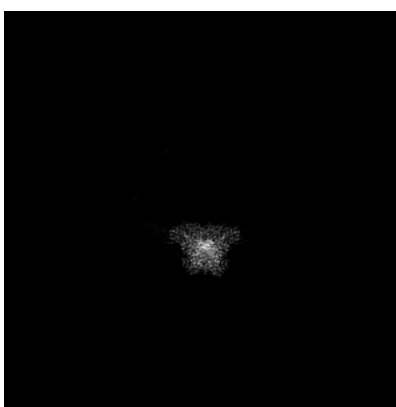
No raw map or half-maps were deposited for this entry and therefore no images, graphs, etc. pertaining to the raw map can be shown.

6.1 Orthogonal projections [i](#)

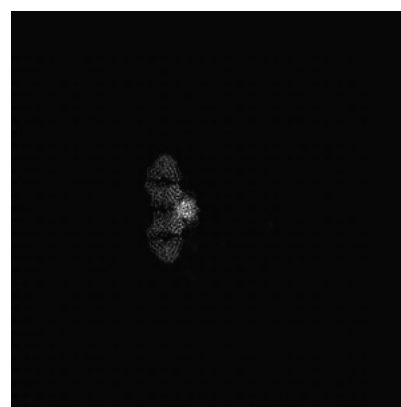
6.1.1 Primary map



X



Y

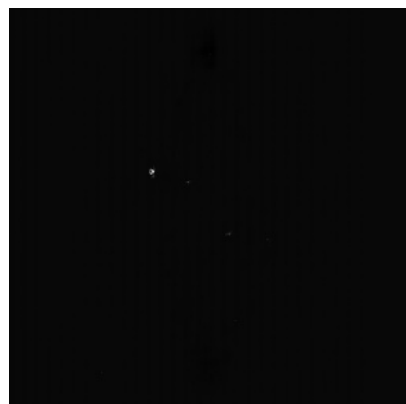


Z

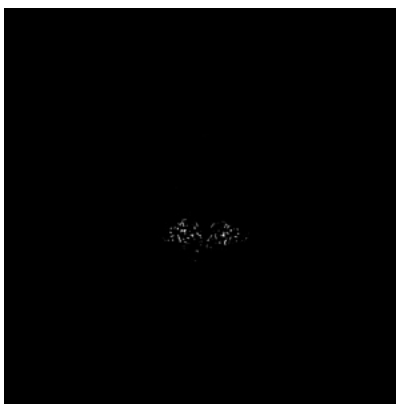
The images above show the map projected in three orthogonal directions.

6.2 Central slices [i](#)

6.2.1 Primary map



X Index: 240



Y Index: 240



Z Index: 240

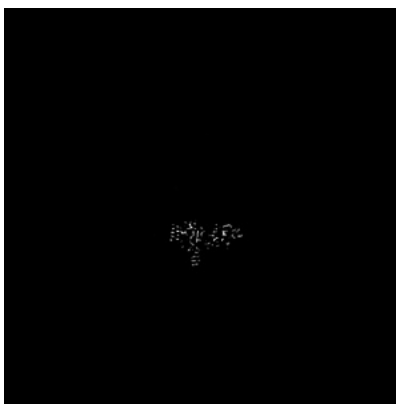
The images above show central slices of the map in three orthogonal directions.

6.3 Largest variance slices [i](#)

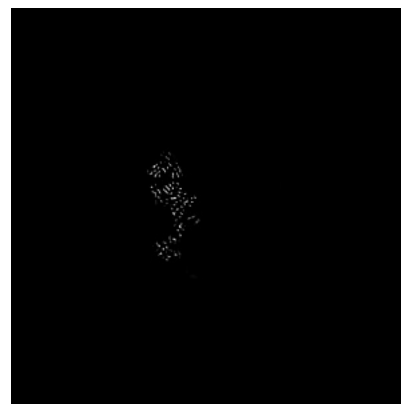
6.3.1 Primary map



X Index: 201



Y Index: 236

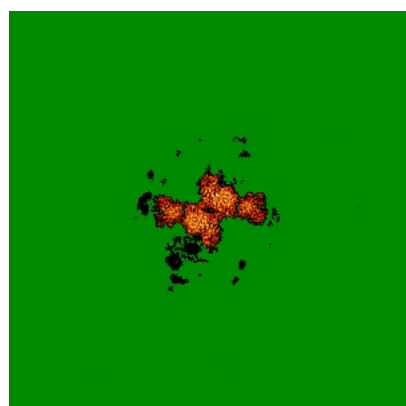


Z Index: 247

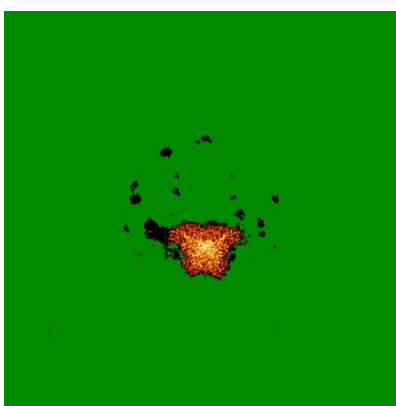
The images above show the largest variance slices of the map in three orthogonal directions.

6.4 Orthogonal standard-deviation projections (False-color) [i](#)

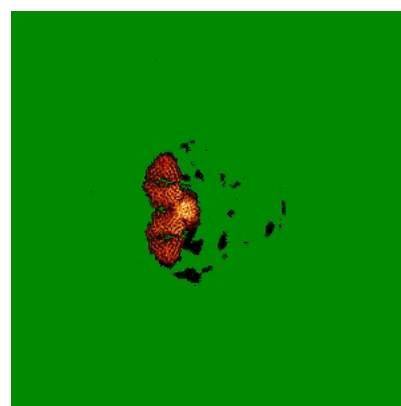
6.4.1 Primary map



X



Y

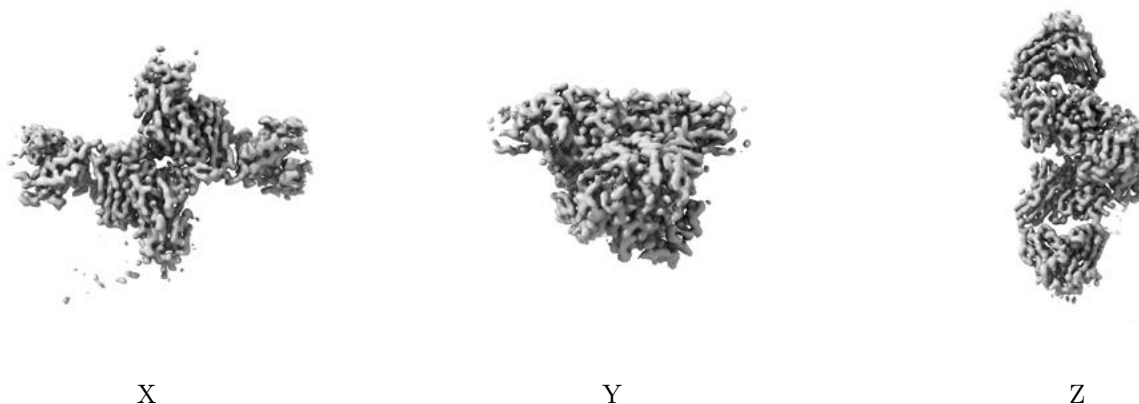


Z

The images above show the map standard deviation projections with false color in three orthogonal directions. Minimum values are shown in green, max in blue, and dark to light orange shades represent small to large values respectively.

6.5 Orthogonal surface views [i](#)

6.5.1 Primary map



The images above show the 3D surface view of the map at the recommended contour level 0.1. These images, in conjunction with the slice images, may facilitate assessment of whether an appropriate contour level has been provided.

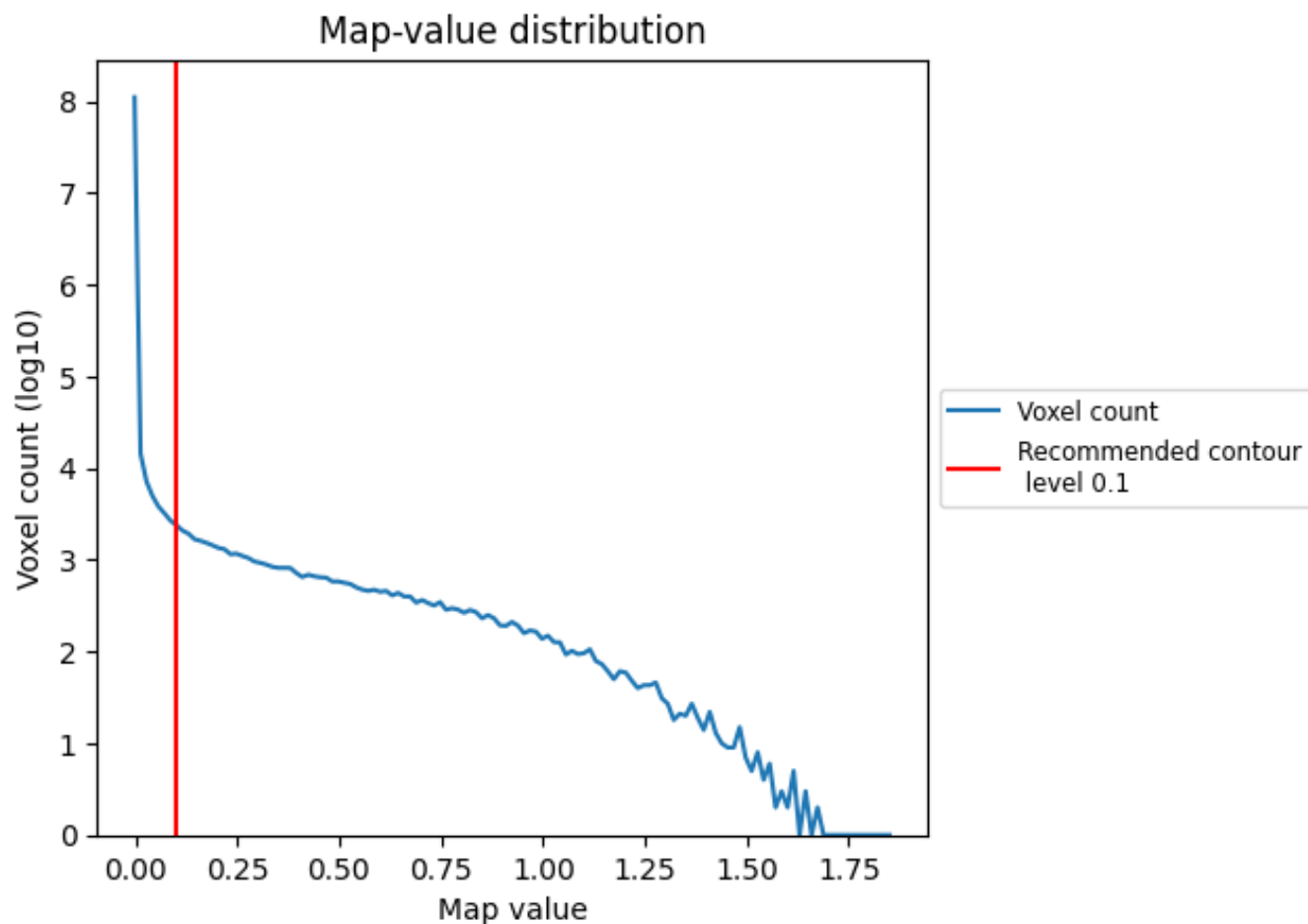
6.6 Mask visualisation [i](#)

This section was not generated. No masks/segmentation were deposited.

7 Map analysis [i](#)

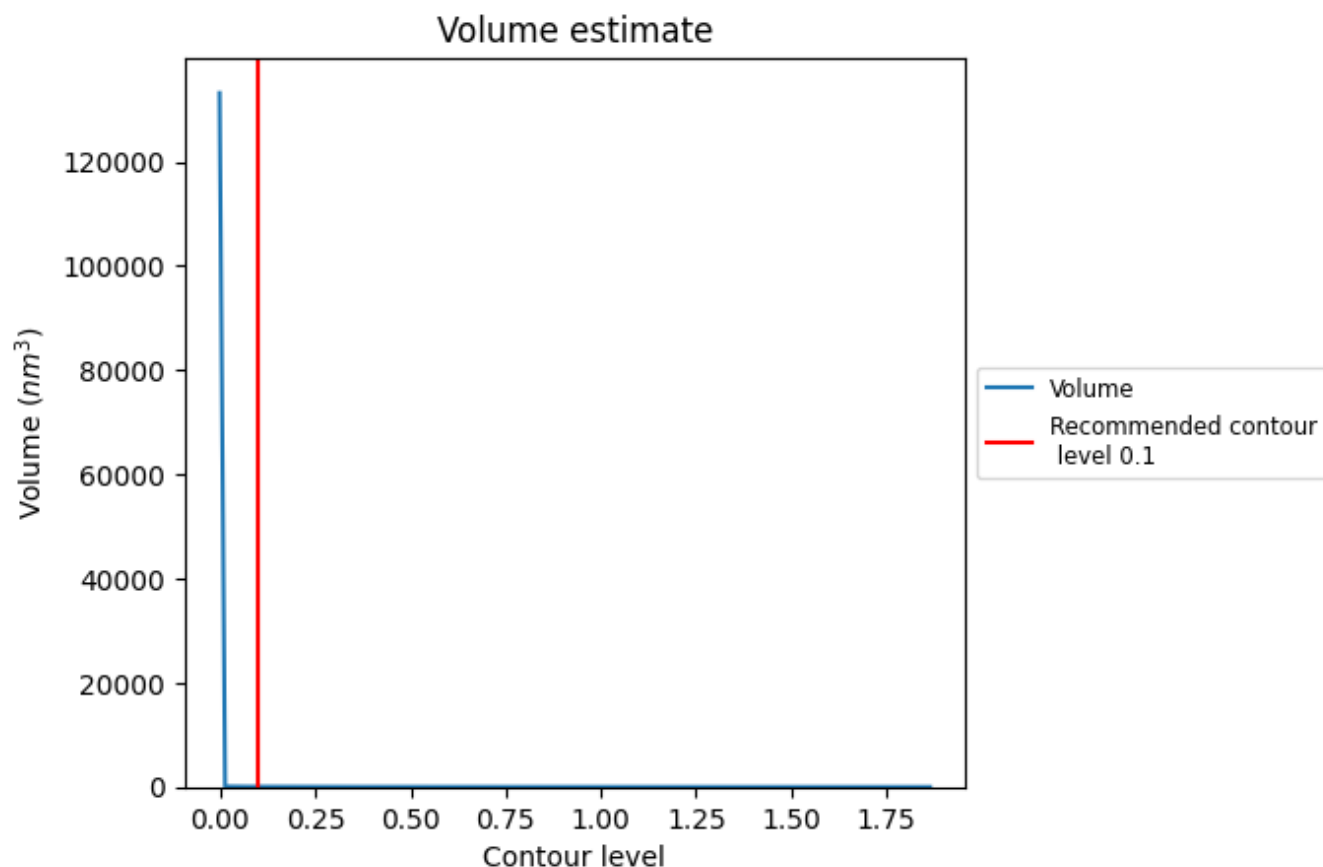
This section contains the results of statistical analysis of the map.

7.1 Map-value distribution [i](#)



The map-value distribution is plotted in 128 intervals along the x-axis. The y-axis is logarithmic. A spike in this graph at zero usually indicates that the volume has been masked.

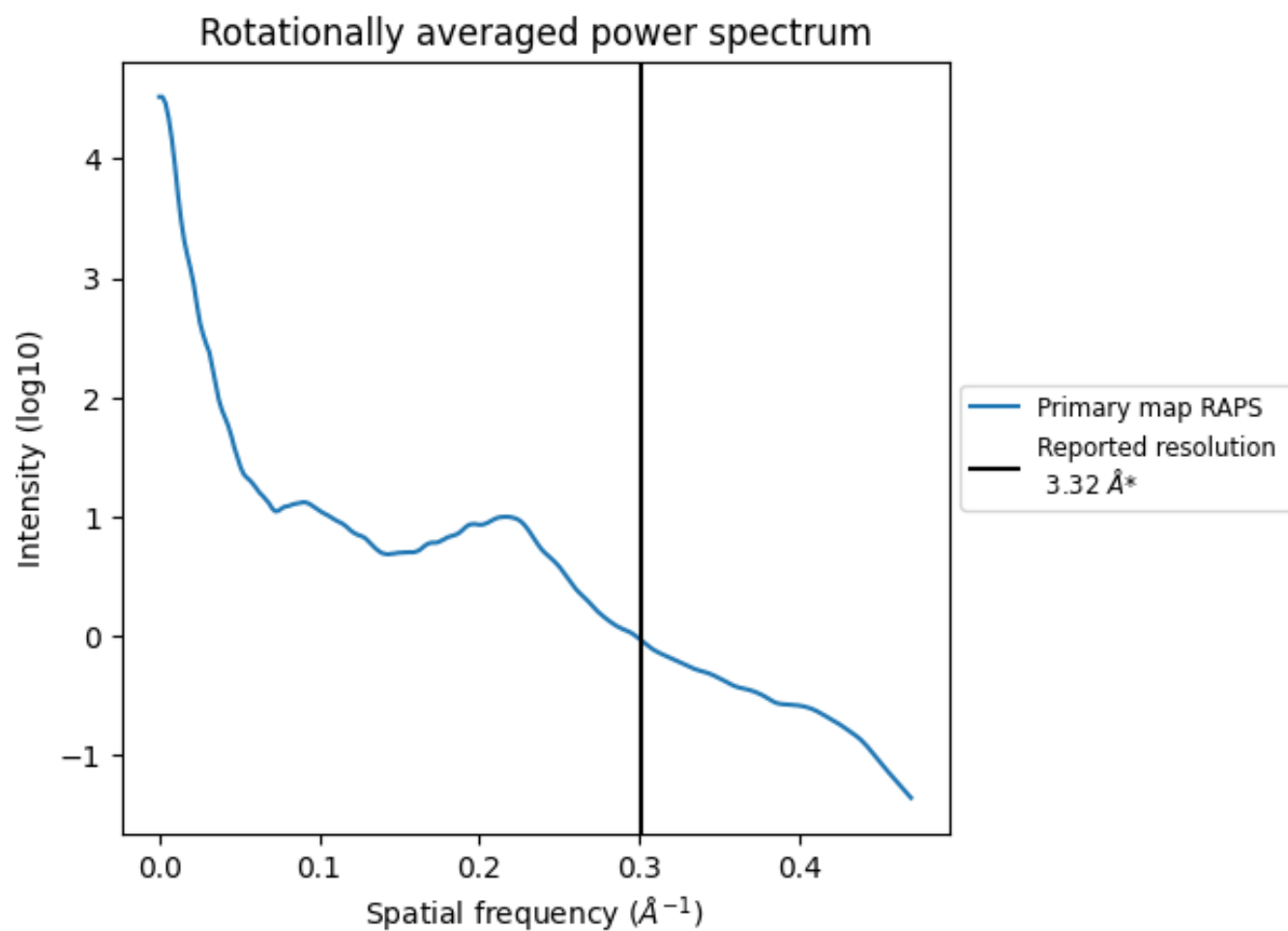
7.2 Volume estimate [i](#)



The volume at the recommended contour level is 53 nm^3 ; this corresponds to an approximate mass of 48 kDa.

The volume estimate graph shows how the enclosed volume varies with the contour level. The recommended contour level is shown as a vertical line and the intersection between the line and the curve gives the volume of the enclosed surface at the given level.

7.3 Rotationally averaged power spectrum ⓘ

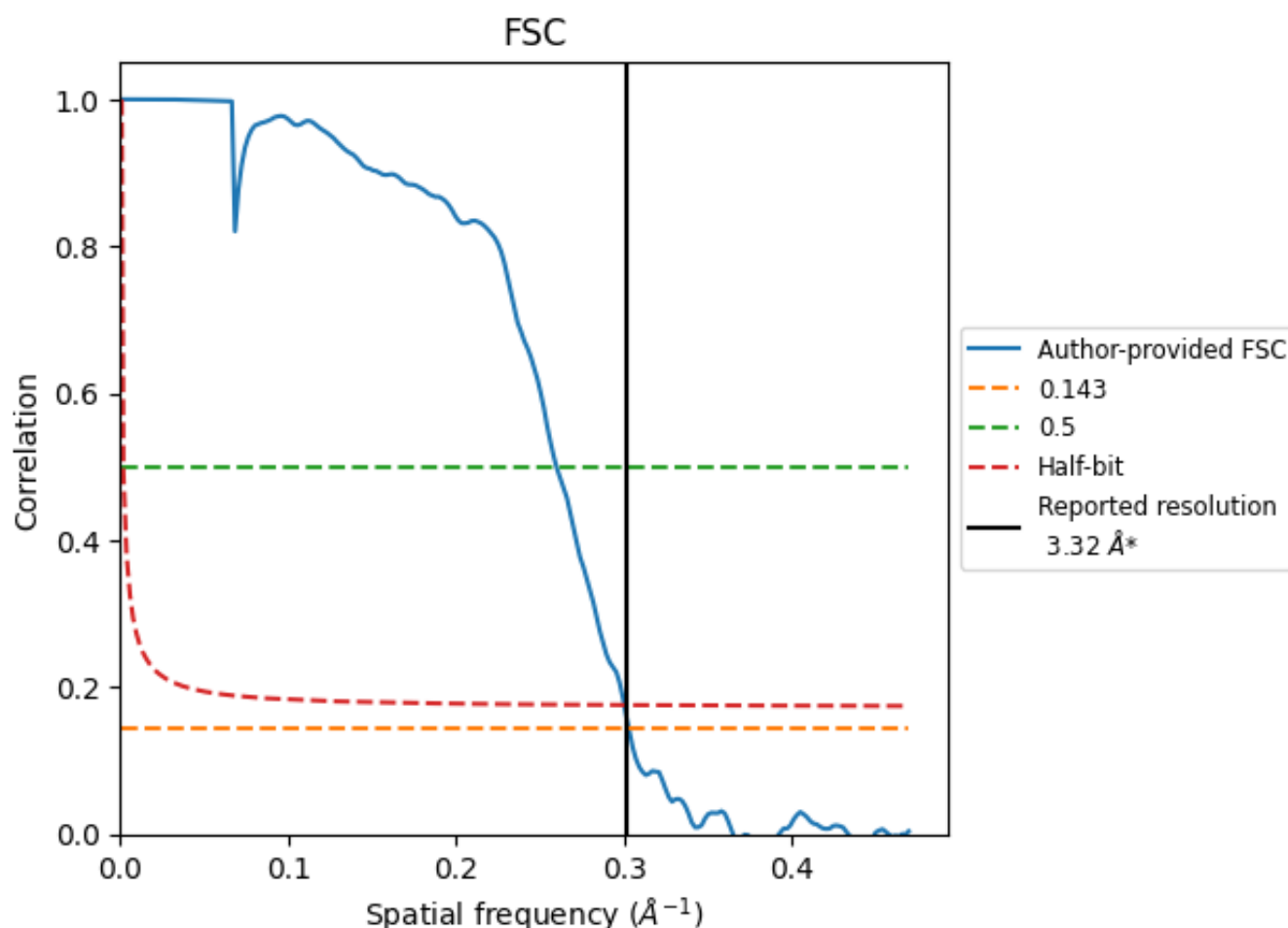


*Reported resolution corresponds to spatial frequency of 0.301 Å⁻¹

8 Fourier-Shell correlation [i](#)

Fourier-Shell Correlation (FSC) is the most commonly used method to estimate the resolution of single-particle and subtomogram-averaged maps. The shape of the curve depends on the imposed symmetry, mask and whether or not the two 3D reconstructions used were processed from a common reference. The reported resolution is shown as a black line. A curve is displayed for the half-bit criterion in addition to lines showing the 0.143 gold standard cut-off and 0.5 cut-off.

8.1 FSC [i](#)



*Reported resolution corresponds to spatial frequency of 0.301 Å⁻¹

8.2 Resolution estimates [i](#)

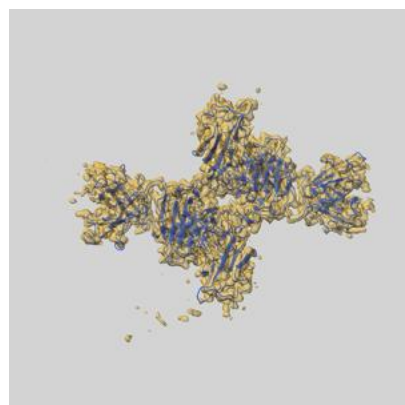
Resolution estimate (Å)	Estimation criterion (FSC cut-off)		
	0.143	0.5	Half-bit
Reported by author	3.32	-	-
Author-provided FSC curve	3.30	3.85	3.33
Unmasked-calculated*	-	-	-

*Resolution estimate based on FSC curve calculated by comparison of deposited half-maps.

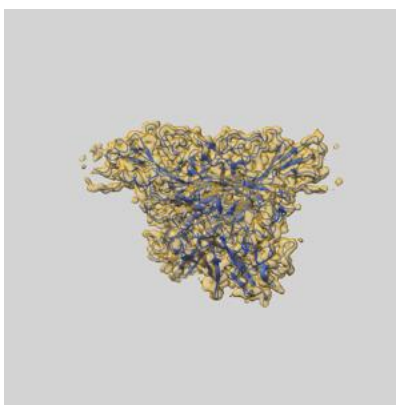
9 Map-model fit [i](#)

This section contains information regarding the fit between EMDB map EMD-32554 and PDB model 7WK0. Per-residue inclusion information can be found in [section 3](#) on [page 6](#).

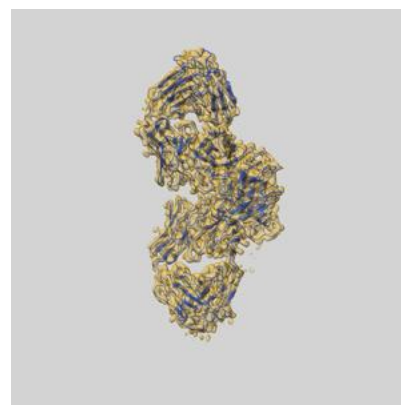
9.1 Map-model overlay [i](#)



X



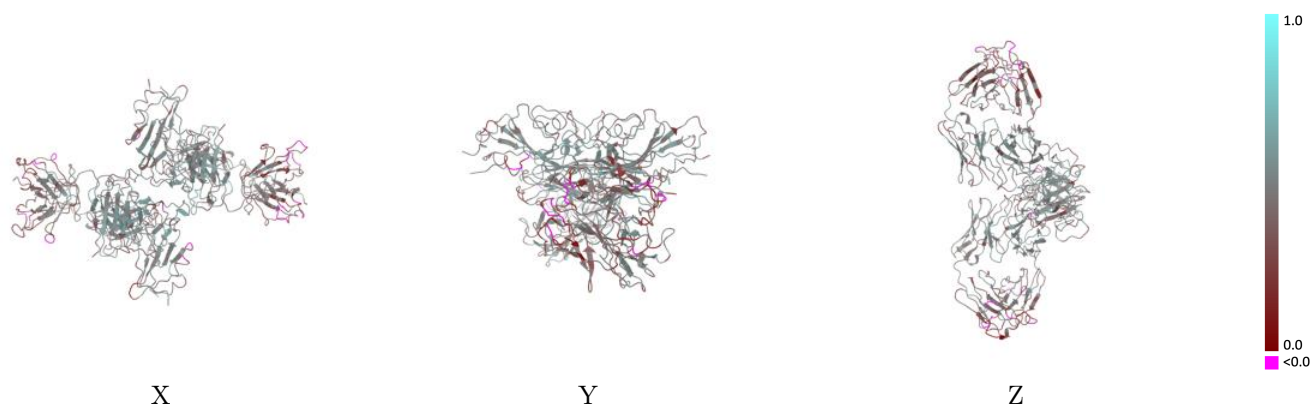
Y



Z

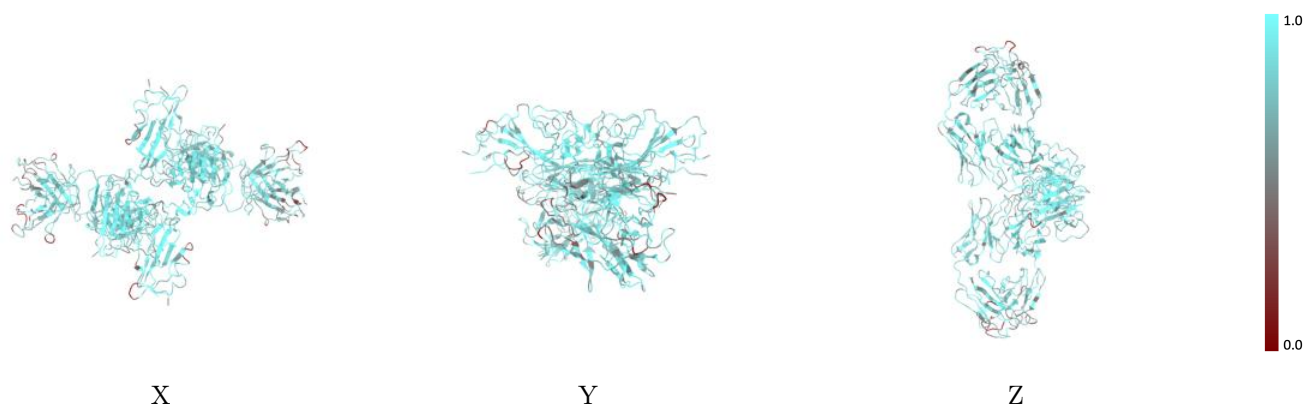
The images above show the 3D surface view of the map at the recommended contour level 0.1 at 50% transparency in yellow overlaid with a ribbon representation of the model coloured in blue. These images allow for the visual assessment of the quality of fit between the atomic model and the map.

9.2 Q-score mapped to coordinate model [i](#)



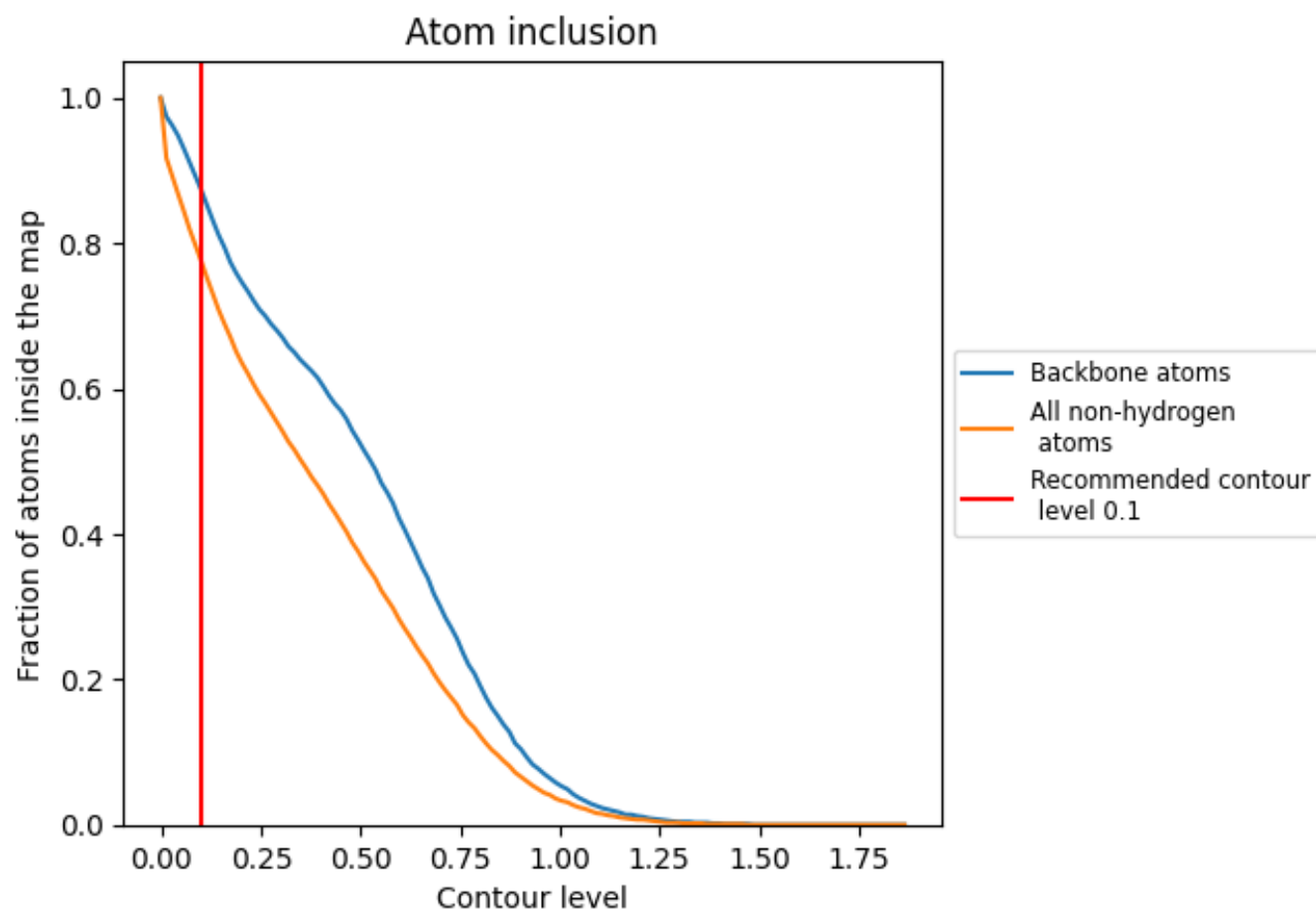
The images above show the model with each residue coloured according its Q-score. This shows their resolvability in the map with higher Q-score values reflecting better resolvability. Please note: Q-score is calculating the resolvability of atoms, and thus high values are only expected at resolutions at which atoms can be resolved. Low Q-score values may therefore be expected for many entries.

9.3 Atom inclusion mapped to coordinate model [i](#)



The images above show the model with each residue coloured according to its atom inclusion. This shows to what extent they are inside the map at the recommended contour level (0.1).

9.4 Atom inclusion ⓘ



At the recommended contour level, 87% of all backbone atoms, 78% of all non-hydrogen atoms, are inside the map.

9.5 Map-model fit summary ⓘ

The table lists the average atom inclusion at the recommended contour level (0.1) and Q-score for the entire model and for each chain.

Chain	Atom inclusion	Q-score
All	<div><div></div></div> 0.7760	<div><div></div></div> 0.4310
A	<div><div></div></div> 0.7710	<div><div></div></div> 0.4320
B	<div><div></div></div> 0.7480	<div><div></div></div> 0.3930
C	<div><div></div></div> 0.8150	<div><div></div></div> 0.4710
D	<div><div></div></div> 0.7770	<div><div></div></div> 0.4350
E	<div><div></div></div> 0.7510	<div><div></div></div> 0.3990
F	<div><div></div></div> 0.7910	<div><div></div></div> 0.4540

1.0

0.0

<0.0