



Full wwPDB X-ray Structure Validation Report ⓘ

May 22, 2025 – 02:57 PM EDT

PDB ID : 8VUF / pdb_00008vuf
Title : Crystal structure of GH9 (K101P, K103N, V108I) HIV-1 reverse transcriptase
in complex with non-nucleoside inhibitor 5i3
Authors : Rumrill, S.; Ruiz, F.X.; Arnold, E.
Deposited on : 2024-01-29
Resolution : 2.36 Å(reported)

This is a Full wwPDB X-ray Structure Validation Report for a publicly released PDB entry.

We welcome your comments at validation@mail.wwpdb.org

A user guide is available at

<https://www.wwpdb.org/validation/2017/XrayValidationReportHelp>

with specific help available everywhere you see the ⓘ symbol.

The types of validation reports are described at

<http://www.wwpdb.org/validation/2017/FAQs#types>.

The following versions of software and data (see [references ⓘ](#)) were used in the production of this report:

MolProbity : 4-5-2 with Phenix2.0rc1
Mogul : 2022.3.0, CSD as543be (2022)
Xtriage (Phenix) : 2.0rc1
EDS : 3.0
buster-report : 1.1.7 (2018)
Percentile statistics : 20231227.v01 (using entries in the PDB archive December 27th 2023)
CCP4 : 9.0.006 (Gargrove)
Density-Fitness : 1.0.12
Ideal geometry (proteins) : Engh & Huber (2001)
Ideal geometry (DNA, RNA) : Parkinson et al. (1996)
Validation Pipeline (wwPDB-VP) : 2.43.1

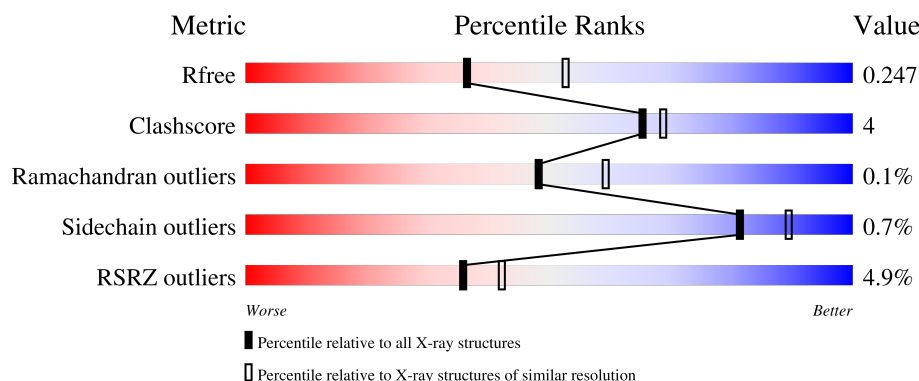
1 Overall quality at a glance

The following experimental techniques were used to determine the structure:

X-RAY DIFFRACTION

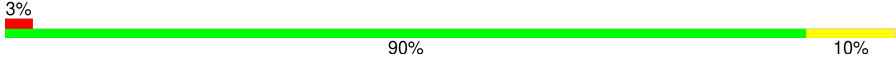

The reported resolution of this entry is 2.36 Å.

Percentile scores (ranging between 0-100) for global validation metrics of the entry are shown in the following graphic. The table shows the number of entries on which the scores are based.



Metric	Whole archive (#Entries)	Similar resolution (#Entries, resolution range(Å))
R_{free}	164625	1460 (2.36-2.36)
Clashscore	180529	1571 (2.36-2.36)
Ramachandran outliers	177936	1559 (2.36-2.36)
Sidechain outliers	177891	1559 (2.36-2.36)
RSRZ outliers	164620	1460 (2.36-2.36)

The table below summarises the geometric issues observed across the polymeric chains and their fit to the electron density. The red, orange, yellow and green segments of the lower bar indicate the fraction of residues that contain outliers for ≥ 3 , 2, 1 and 0 types of geometric quality criteria respectively. A grey segment represents the fraction of residues that are not modelled. The numeric value for each fraction is indicated below the corresponding segment, with a dot representing fractions $\leq 5\%$. The upper red bar (where present) indicates the fraction of residues that have poor fit to the electron density. The numeric value is given above the bar.

Mol	Chain	Length	Quality of chain
1	A	557	
2	B	428	

2 Entry composition

There are 8 unique types of molecules in this entry. The entry contains 8325 atoms, of which 0 are hydrogens and 0 are deuteriums.

In the tables below, the ZeroOcc column contains the number of atoms modelled with zero occupancy, the AltConf column contains the number of residues with at least one atom in alternate conformation and the Trace column contains the number of residues modelled with at most 2 atoms.

- Molecule 1 is a protein called Reverse transcriptase/ribonuclease H.

Mol	Chain	Residues	Atoms					ZeroOcc	AltConf	Trace
1	A	556	Total	C	N	O	S	0	1	0
			4514	2921	749	836	8			

There are 8 discrepancies between the modelled and reference sequences:

Chain	Residue	Modelled	Actual	Comment	Reference
A	-1	MET	-	initiating methionine	UNP P03366
A	0	VAL	-	expression tag	UNP P03366
A	101	PRO	LYS	engineered mutation	UNP P03366
A	103	ASN	LYS	engineered mutation	UNP P03366
A	108	ILE	VAL	engineered mutation	UNP P03366
A	172	ALA	LYS	conflict	UNP P03366
A	173	ALA	LYS	engineered mutation	UNP P03366
A	280	SER	CYS	engineered mutation	UNP P03366

- Molecule 2 is a protein called p51 RT.

Mol	Chain	Residues	Atoms					ZeroOcc	AltConf	Trace
2	B	414	Total	C	N	O	S	0	0	0
			3426	2234	566	619	7			

There is a discrepancy between the modelled and reference sequences:

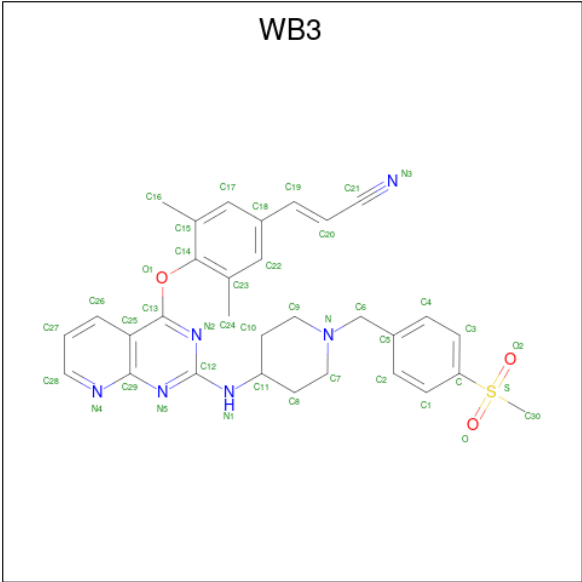
Chain	Residue	Modelled	Actual	Comment	Reference
B	280	SER	CYS	engineered mutation	UNP P03366

- Molecule 3 is SULFATE ION (CCD ID: SO4) (formula: O₄S).



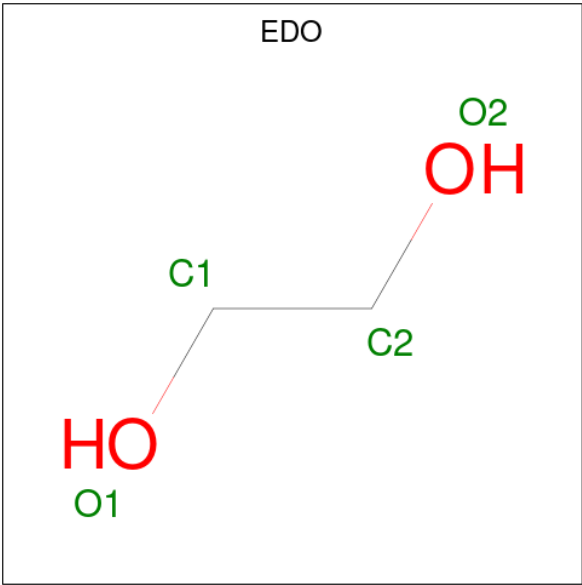
Mol	Chain	Residues	Atoms			ZeroOcc	AltConf
3	A	1	Total	O	S	0	0
			5	4	1		
3	A	1	Total	O	S	0	0
			5	4	1		
3	A	1	Total	O	S	0	0
			5	4	1		
3	B	1	Total	O	S	0	0
			5	4	1		
3	B	1	Total	O	S	0	0
			5	4	1		
3	B	1	Total	O	S	0	0
			5	4	1		
3	B	1	Total	O	S	0	0
			5	4	1		

- Molecule 4 is (2E)-3-[4-({2-[(1-{[4-(methanesulfonyl)phenyl]methyl}piperidin-4-yl)amino]pyrido[2,3-d]pyrimidin-4-yl}oxy)-3,5-dimethylphenyl]prop-2-enenitrile (CCD ID: WB3) (formula: C₃₁H₃₂N₆O₃S) (labeled as "Ligand of Interest" by depositor).



Mol	Chain	Residues	Atoms					ZeroOcc	AltConf
4	A	1	Total	C	N	O	S	0	0
			41	31	6	3	1		

- Molecule 5 is 1,2-ETHANEDIOL (CCD ID: EDO) (formula: C₂H₆O₂).



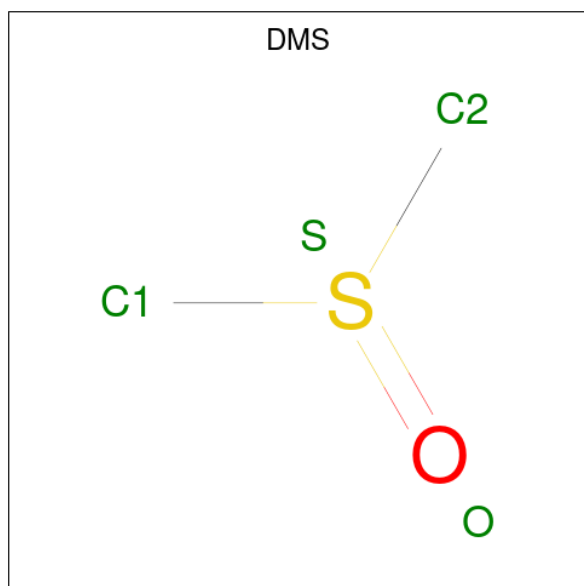
Mol	Chain	Residues	Atoms			ZeroOcc	AltConf
5	A	1	Total	C	O	0	0
			4	2	2		
5	A	1	Total	C	O	0	0
			4	2	2		
5	B	1	Total	C	O	0	0
			4	2	2		

Continued on next page...

Continued from previous page...

Mol	Chain	Residues	Atoms			ZeroOcc	AltConf
5	B	1	Total	C	O	0	0
			4	2	2		

- Molecule 6 is DIMETHYL SULFOXIDE (CCD ID: DMS) (formula: C_2H_6OS).



Mol	Chain	Residues	Atoms				ZeroOcc	AltConf
6	A	1	Total	C	O	S	0	0
			4	2	1	1		

- Molecule 7 is MAGNESIUM ION (CCD ID: MG) (formula: Mg).

Mol	Chain	Residues	Atoms		ZeroOcc	AltConf
7	A	1	Total	Mg	0	0
			1	1		

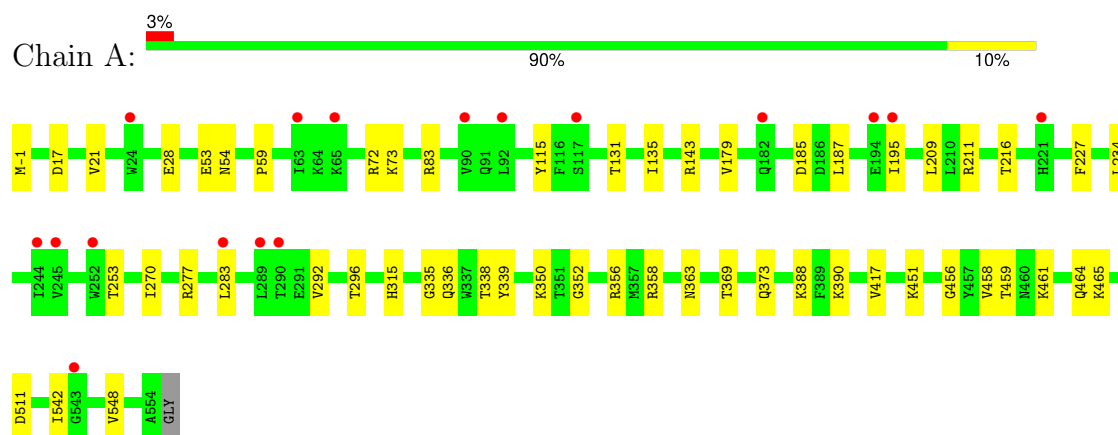
- Molecule 8 is water.

Mol	Chain	Residues	Atoms		ZeroOcc	AltConf
8	A	161	Total	O	0	0
			161	161		
8	B	122	Total	O	0	0
			122	122		

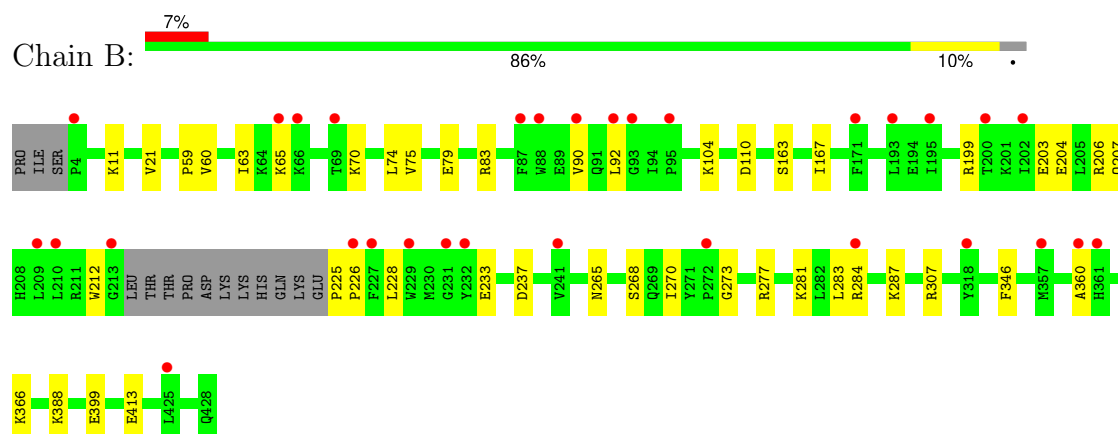
3 Residue-property plots [i](#)

These plots are drawn for all protein, RNA, DNA and oligosaccharide chains in the entry. The first graphic for a chain summarises the proportions of the various outlier classes displayed in the second graphic. The second graphic shows the sequence view annotated by issues in geometry and electron density. Residues are color-coded according to the number of geometric quality criteria for which they contain at least one outlier: green = 0, yellow = 1, orange = 2 and red = 3 or more. A red dot above a residue indicates a poor fit to the electron density ($RSRZ > 2$). Stretches of 2 or more consecutive residues without any outlier are shown as a green connector. Residues present in the sample, but not in the model, are shown in grey.

- Molecule 1: Reverse transcriptase/ribonuclease H



- Molecule 2: p51 RT



4 Data and refinement statistics

Property	Value	Source
Space group	C 1 2 1	Depositor
Cell constants a, b, c, α , β , γ	163.07Å 72.79Å 109.14Å 90.00° 100.25° 90.00°	Depositor
Resolution (Å)	48.82 – 2.36 48.82 – 2.36	Depositor EDS
% Data completeness (in resolution range)	95.2 (48.82-2.36) 95.4 (48.82-2.36)	Depositor EDS
R_{merge}	(Not available)	Depositor
R_{sym}	(Not available)	Depositor
$\langle I/\sigma(I) \rangle$ ¹	1.64 (at 2.37Å)	Xtriage
Refinement program	PHENIX 1.19.2_4158	Depositor
R, R_{free}	0.205 , 0.247 0.205 , 0.247	Depositor DCC
R_{free} test set	50033 reflections (4.02%)	wwPDB-VP
Wilson B-factor (Å ²)	47.4	Xtriage
Anisotropy	0.139	Xtriage
Bulk solvent k_{sol} (e/Å ³), B_{sol} (Å ²)	0.32 , 53.8	EDS
L-test for twinning ²	$\langle L \rangle = 0.47$, $\langle L^2 \rangle = 0.30$	Xtriage
Estimated twinning fraction	No twinning to report.	Xtriage
F_o, F_c correlation	0.95	EDS
Total number of atoms	8325	wwPDB-VP
Average B, all atoms (Å ²)	66.0	wwPDB-VP

Xtriage's analysis on translational NCS is as follows: *The largest off-origin peak in the Patterson function is 4.75% of the height of the origin peak. No significant pseudotranslation is detected.*

¹Intensities estimated from amplitudes.

²Theoretical values of $\langle |L| \rangle$, $\langle L^2 \rangle$ for acentric reflections are 0.5, 0.333 respectively for untwinned datasets, and 0.375, 0.2 for perfectly twinned datasets.

5 Model quality

5.1 Standard geometry

Bond lengths and bond angles in the following residue types are not validated in this section: DMS, EDO, WB3, SO4, MG

The Z score for a bond length (or angle) is the number of standard deviations the observed value is removed from the expected value. A bond length (or angle) with $|Z| > 5$ is considered an outlier worth inspection. RMSZ is the root-mean-square of all Z scores of the bond lengths (or angles).

Mol	Chain	Bond lengths		Bond angles	
		RMSZ	# Z >5	RMSZ	# Z >5
1	A	0.09	0/4633	0.24	0/6301
2	B	0.08	0/3527	0.24	0/4791
All	All	0.09	0/8160	0.24	0/11092

There are no bond length outliers.

There are no bond angle outliers.

There are no chirality outliers.

There are no planarity outliers.

5.2 Too-close contacts

In the following table, the Non-H and H(model) columns list the number of non-hydrogen atoms and hydrogen atoms in the chain respectively. The H(added) column lists the number of hydrogen atoms added and optimized by MolProbity. The Clashes column lists the number of clashes within the asymmetric unit, whereas Symm-Clashes lists symmetry-related clashes.

Mol	Chain	Non-H	H(model)	H(added)	Clashes	Symm-Clashes
1	A	4514	0	4560	34	0
2	B	3426	0	3455	27	0
3	A	15	0	0	0	0
3	B	25	0	0	0	0
4	A	41	0	0	0	0
5	A	8	0	12	2	0
5	B	8	0	12	1	0
6	A	4	0	6	0	0
7	A	1	0	0	0	0
8	A	161	0	0	6	0
8	B	122	0	0	5	0
All	All	8325	0	8045	60	0

The all-atom clashscore is defined as the number of clashes found per 1000 atoms (including hydrogen atoms). The all-atom clashscore for this structure is 4.

All (60) close contacts within the same asymmetric unit are listed below, sorted by their clash magnitude.

Atom-1	Atom-2	Interatomic distance (Å)	Clash overlap (Å)
2:B:360:ALA:HB2	2:B:366:LYS:HE3	1.72	0.72
2:B:388:LYS:HD3	2:B:413:GLU:HB2	1.76	0.68
2:B:65:LYS:NZ	2:B:110:ASP:OD2	2.30	0.65
2:B:307:ARG:NH2	8:B:1003:HOH:O	2.32	0.61
1:A:211:ARG:NH1	8:A:808:HOH:O	2.35	0.60
2:B:281:LYS:NZ	8:B:1006:HOH:O	2.35	0.58
1:A:227:PHE:HB2	1:A:234:LEU:HB2	1.85	0.58
2:B:167:ILE:HD12	2:B:212:TRP:HB3	1.85	0.58
1:A:388:LYS:HE3	5:A:703:EDO:H21	1.86	0.58
2:B:204:GLU:O	2:B:207:GLN:NE2	2.38	0.57
2:B:225:PRO:HB2	2:B:228:LEU:HB2	1.86	0.57
2:B:203:GLU:HG3	2:B:206:ARG:HD2	1.86	0.57
1:A:209:LEU:HD13	1:A:216:THR:HG21	1.88	0.56
2:B:270:ILE:HG12	2:B:346:PHE:HB3	1.87	0.55
1:A:451:LYS:NZ	8:A:811:HOH:O	2.36	0.53
2:B:277:ARG:NH2	8:B:1011:HOH:O	2.42	0.52
2:B:284:ARG:HB2	2:B:287:LYS:HE3	1.92	0.51
1:A:350:LYS:NZ	8:A:823:HOH:O	2.45	0.50
2:B:21:VAL:HB	2:B:59:PRO:HD3	1.93	0.50
2:B:63:ILE:HD13	2:B:74:LEU:HD22	1.93	0.50
1:A:461:LYS:NZ	8:A:810:HOH:O	2.35	0.50
2:B:199:ARG:NE	2:B:233:GLU:OE2	2.45	0.50
1:A:28:GLU:HG3	1:A:135:ILE:HD12	1.94	0.49
2:B:366:LYS:NZ	8:B:1005:HOH:O	2.33	0.49
1:A:358:ARG:HA	1:A:358:ARG:HE	1.76	0.48
1:A:458:VAL:HG12	1:A:464:GLN:HG2	1.95	0.48
2:B:273:GLY:N	8:B:1015:HOH:O	2.46	0.48
1:A:390:LYS:HE3	1:A:417:VAL:HB	1.96	0.47
1:A:277:ARG:HB2	1:A:336:GLN:CD	2.40	0.47
1:A:17:ASP:O	1:A:83:ARG:HD3	2.14	0.47
1:A:54:ASN:ND2	8:A:825:HOH:O	2.45	0.47
1:A:72:ARG:NH1	1:A:73:LYS:H	2.13	0.46
2:B:265:ASN:O	2:B:268:SER:OG	2.30	0.46
2:B:11:LYS:HD2	2:B:11:LYS:HA	1.80	0.45
2:B:60:VAL:HG23	2:B:75:VAL:HG22	1.98	0.45
2:B:163:SER:O	2:B:167:ILE:HG12	2.17	0.45
1:A:21:VAL:HB	1:A:59:PRO:HD3	1.99	0.45

Continued on next page...

Continued from previous page...

Atom-1	Atom-2	Interatomic distance (Å)	Clash overlap (Å)
1:A:338:THR:OG1	8:A:801:HOH:O	2.21	0.45
2:B:399:GLU:HB3	5:B:901:EDO:H22	1.98	0.44
1:A:115:TYR:CD2	1:A:185:ASP:HB3	2.52	0.44
1:A:270:ILE:HD11	1:A:315:HIS:HA	1.99	0.44
1:A:458:VAL:HG22	1:A:548:VAL:HB	2.00	0.44
1:A:131:THR:OG1	1:A:143:ARG:NH1	2.51	0.43
2:B:104:LYS:HA	2:B:237:ASP:HB3	1.99	0.43
1:A:195:ILE:HD12	1:A:195:ILE:HA	1.84	0.43
2:B:79:GLU:HG3	2:B:83:ARG:HD2	2.00	0.43
1:A:-1:MET:HB2	5:A:704:EDO:H21	2.00	0.43
1:A:542:ILE:HG23	2:B:283:LEU:HD13	2.00	0.43
1:A:390:LYS:HE3	1:A:390:LYS:HB3	1.85	0.43
1:A:187:LEU:HD23	1:A:187:LEU:HA	1.91	0.42
2:B:203:GLU:HA	2:B:206:ARG:HG3	2.00	0.42
1:A:53:GLU:H	1:A:53:GLU:CD	2.27	0.42
1:A:369:THR:O	1:A:373:GLN:HG2	2.19	0.42
1:A:363:ASN:HA	1:A:511:ASP:OD1	2.20	0.42
1:A:253:THR:HA	1:A:292:VAL:HA	2.01	0.42
2:B:70:LYS:HD3	2:B:70:LYS:HA	1.81	0.41
1:A:335:GLY:HA3	1:A:356:ARG:HG2	2.03	0.41
1:A:339:TYR:CZ	1:A:352:GLY:HA3	2.55	0.40
1:A:115:TYR:HD2	1:A:185:ASP:HB3	1.85	0.40
1:A:456:GLY:HA3	1:A:465:LYS:O	2.22	0.40

There are no symmetry-related clashes.

5.3 Torsion angles [i](#)

5.3.1 Protein backbone [i](#)

In the following table, the Percentiles column shows the percent Ramachandran outliers of the chain as a percentile score with respect to all X-ray entries followed by that with respect to entries of similar resolution.

The Analysed column shows the number of residues for which the backbone conformation was analysed, and the total number of residues.

Mol	Chain	Analysed	Favoured	Allowed	Outliers	Percentiles	
1	A	554/557 (100%)	538 (97%)	16 (3%)	0	100	100
2	B	410/428 (96%)	402 (98%)	7 (2%)	1 (0%)	44	52

Continued on next page...

Continued from previous page...

Mol	Chain	Analysed	Favoured	Allowed	Outliers	Percentiles
All	All	964/985 (98%)	940 (98%)	23 (2%)	1 (0%)	48 59

All (1) Ramachandran outliers are listed below:

Mol	Chain	Res	Type
2	B	226	PRO

5.3.2 Protein sidechains ⓘ

In the following table, the Percentiles column shows the percent sidechain outliers of the chain as a percentile score with respect to all X-ray entries followed by that with respect to entries of similar resolution.

The Analysed column shows the number of residues for which the sidechain conformation was analysed, and the total number of residues.

Mol	Chain	Analysed	Rotameric	Outliers	Percentiles
1	A	495/495 (100%)	491 (99%)	4 (1%)	79 88
2	B	376/390 (96%)	374 (100%)	2 (0%)	86 93
All	All	871/885 (98%)	865 (99%)	6 (1%)	81 89

All (6) residues with a non-rotameric sidechain are listed below:

Mol	Chain	Res	Type
1	A	179	VAL
1	A	283	LEU
1	A	296	THR
1	A	459	THR
2	B	90	VAL
2	B	92	LEU

Sometimes sidechains can be flipped to improve hydrogen bonding and reduce clashes. All (8) such sidechains are listed below:

Mol	Chain	Res	Type
1	A	197	GLN
1	A	221	HIS
1	A	336	GLN
1	A	471	ASN
1	A	507	GLN
2	B	208	HIS

Continued on next page...

Continued from previous page...

Mol	Chain	Res	Type
2	B	255	ASN
2	B	428	GLN

5.3.3 RNA ⓘ

There are no RNA molecules in this entry.

5.4 Non-standard residues in protein, DNA, RNA chains ⓘ

There are no non-standard protein/DNA/RNA residues in this entry.

5.5 Carbohydrates ⓘ

There are no oligosaccharides in this entry.

5.6 Ligand geometry ⓘ

Of 15 ligands modelled in this entry, 1 is monoatomic - leaving 14 for Mogul analysis.

In the following table, the Counts columns list the number of bonds (or angles) for which Mogul statistics could be retrieved, the number of bonds (or angles) that are observed in the model and the number of bonds (or angles) that are defined in the Chemical Component Dictionary. The Link column lists molecule types, if any, to which the group is linked. The Z score for a bond length (or angle) is the number of standard deviations the observed value is removed from the expected value. A bond length (or angle) with $|Z| > 2$ is considered an outlier worth inspection. RMSZ is the root-mean-square of all Z scores of the bond lengths (or angles).

Mol	Type	Chain	Res	Link	Bond lengths			Bond angles		
					Counts	RMSZ	$\# Z > 2$	Counts	RMSZ	$\# Z > 2$
3	SO4	B	905	-	4,4,4	0.24	0	6,6,6	0.08	0
3	SO4	B	903	-	4,4,4	0.24	0	6,6,6	0.09	0
5	EDO	A	704	-	3,3,3	0.42	0	2,2,2	0.39	0
3	SO4	B	904	-	4,4,4	0.24	0	6,6,6	0.10	0
5	EDO	A	703	-	3,3,3	0.40	0	2,2,2	0.45	0
3	SO4	B	907	-	4,4,4	0.24	0	6,6,6	0.09	0
6	DMS	A	705	-	3,3,3	0.67	0	3,3,3	0.50	0
3	SO4	B	906	-	4,4,4	0.23	0	6,6,6	0.08	0
3	SO4	A	706	-	4,4,4	0.24	0	6,6,6	0.07	0
3	SO4	A	707	-	4,4,4	0.24	0	6,6,6	0.08	0
3	SO4	A	701	-	4,4,4	0.24	0	6,6,6	0.07	0
5	EDO	B	902	-	3,3,3	0.43	0	2,2,2	0.40	0

Mol	Type	Chain	Res	Link	Bond lengths			Bond angles		
					Counts	RMSZ	# Z > 2	Counts	RMSZ	# Z > 2
5	EDO	B	901	-	3,3,3	0.39	0	2,2,2	0.40	0
4	WB3	A	702	-	45,45,45	0.22	0	62,64,64	0.74	2 (3%)

In the following table, the Chirals column lists the number of chiral outliers, the number of chiral centers analysed, the number of these observed in the model and the number defined in the Chemical Component Dictionary. Similar counts are reported in the Torsion and Rings columns. '-' means no outliers of that kind were identified.

Mol	Type	Chain	Res	Link	Chirals	Torsions	Rings
5	EDO	A	704	-	-	0/1/1/1	-
5	EDO	A	703	-	-	1/1/1/1	-
5	EDO	B	902	-	-	0/1/1/1	-
5	EDO	B	901	-	-	0/1/1/1	-
4	WB3	A	702	-	-	6/21/32/32	0/5/5/5

There are no bond length outliers.

All (2) bond angle outliers are listed below:

Mol	Chain	Res	Type	Atoms	Z	Observed(°)	Ideal(°)
4	A	702	WB3	C26-C25-C13	3.01	127.31	123.45
4	A	702	WB3	C12-N1-C11	2.72	128.55	124.32

There are no chirality outliers.

All (7) torsion outliers are listed below:

Mol	Chain	Res	Type	Atoms
4	A	702	WB3	C1-C-S-C30
4	A	702	WB3	C3-C-S-C30
4	A	702	WB3	C5-C6-N-C9
4	A	702	WB3	C1-C-S-O
4	A	702	WB3	C3-C-S-O
4	A	702	WB3	C5-C6-N-C7
5	A	703	EDO	O1-C1-C2-O2

There are no ring outliers.

3 monomers are involved in 3 short contacts:

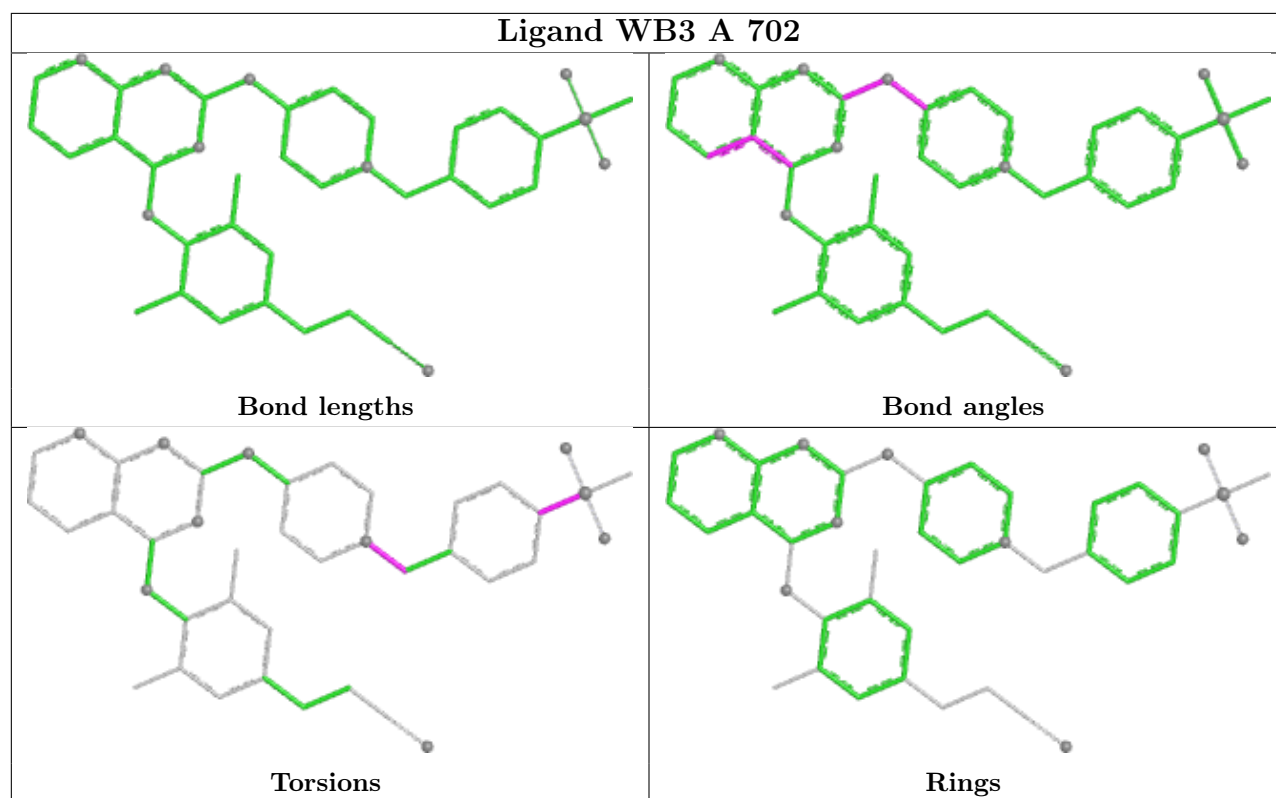
Mol	Chain	Res	Type	Clashes	Symm-Clashes
5	A	704	EDO	1	0
5	A	703	EDO	1	0

Continued on next page...

Continued from previous page...

Mol	Chain	Res	Type	Clashes	Symm-Clashes
5	B	901	EDO	1	0

The following is a two-dimensional graphical depiction of Mogul quality analysis of bond lengths, bond angles, torsion angles, and ring geometry for all instances of the Ligand of Interest. In addition, ligands with molecular weight > 250 and outliers as shown on the validation Tables will also be included. For torsion angles, if less than 5% of the Mogul distribution of torsion angles is within 10 degrees of the torsion angle in question, then that torsion angle is considered an outlier. Any bond that is central to one or more torsion angles identified as an outlier by Mogul will be highlighted in the graph. For rings, the root-mean-square deviation (RMSD) between the ring in question and similar rings identified by Mogul is calculated over all ring torsion angles. If the average RMSD is greater than 60 degrees and the minimal RMSD between the ring in question and any Mogul-identified rings is also greater than 60 degrees, then that ring is considered an outlier. The outliers are highlighted in purple. The color gray indicates Mogul did not find sufficient equivalents in the CSD to analyse the geometry.



5.7 Other polymers [i](#)

There are no such residues in this entry.

5.8 Polymer linkage issues [i](#)

There are no chain breaks in this entry.

6 Fit of model and data [i](#)

6.1 Protein, DNA and RNA chains [i](#)

In the following table, the column labelled ‘#RSRZ > 2’ contains the number (and percentage) of RSRZ outliers, followed by percent RSRZ outliers for the chain as percentile scores relative to all X-ray entries and entries of similar resolution. The OWAB column contains the minimum, median, 95th percentile and maximum values of the occupancy-weighted average B-factor per residue. The column labelled ‘Q < 0.9’ lists the number of (and percentage) of residues with an average occupancy less than 0.9.

Mol	Chain	Analysed	<RSRZ>	#RSRZ>2	OWAB(Å ²)	Q<0.9
1	A	556/557 (99%)	0.12	17 (3%) 51 57	30, 59, 117, 203	0
2	B	414/428 (96%)	0.32	31 (7%) 22 25	32, 59, 134, 216	0
All	All	970/985 (98%)	0.20	48 (4%) 36 42	30, 59, 127, 216	0

All (48) RSRZ outliers are listed below:

Mol	Chain	Res	Type	RSRZ
2	B	425	LEU	4.9
2	B	90	VAL	4.8
2	B	92	LEU	4.2
2	B	93	GLY	3.8
2	B	241	VAL	3.7
1	A	90	VAL	3.6
1	A	252	TRP	3.5
2	B	229	TRP	3.4
2	B	232	TYR	3.3
2	B	95	PRO	3.3
1	A	92	LEU	3.3
1	A	24	TRP	3.2
2	B	209	LEU	3.1
1	A	543	GLY	2.9
2	B	69	THR	2.9
2	B	65	LYS	2.9
1	A	63	ILE	2.8
2	B	88	TRP	2.8
2	B	193	LEU	2.8
2	B	226	PRO	2.8
2	B	66	LYS	2.7
2	B	213	GLY	2.6
2	B	4	PRO	2.5
1	A	195	ILE	2.5

Continued on next page...

Continued from previous page...

Mol	Chain	Res	Type	RSRZ
2	B	361	HIS	2.5
2	B	87	PHE	2.4
2	B	360	ALA	2.4
2	B	202	ILE	2.4
2	B	227	PHE	2.3
1	A	245	VAL	2.3
1	A	289	LEU	2.3
2	B	210	LEU	2.3
2	B	171	PHE	2.2
1	A	117	SER	2.2
2	B	318	TYR	2.2
1	A	244	ILE	2.2
2	B	195	ILE	2.2
1	A	194	GLU	2.2
1	A	290	THR	2.2
2	B	272	PRO	2.1
1	A	65	LYS	2.1
1	A	221	HIS	2.1
1	A	283	LEU	2.1
2	B	284	ARG	2.1
1	A	182	GLN	2.0
2	B	357	MET	2.0
2	B	200	THR	2.0
2	B	231	GLY	2.0

6.2 Non-standard residues in protein, DNA, RNA chains [i](#)

There are no non-standard protein/DNA/RNA residues in this entry.

6.3 Carbohydrates [i](#)

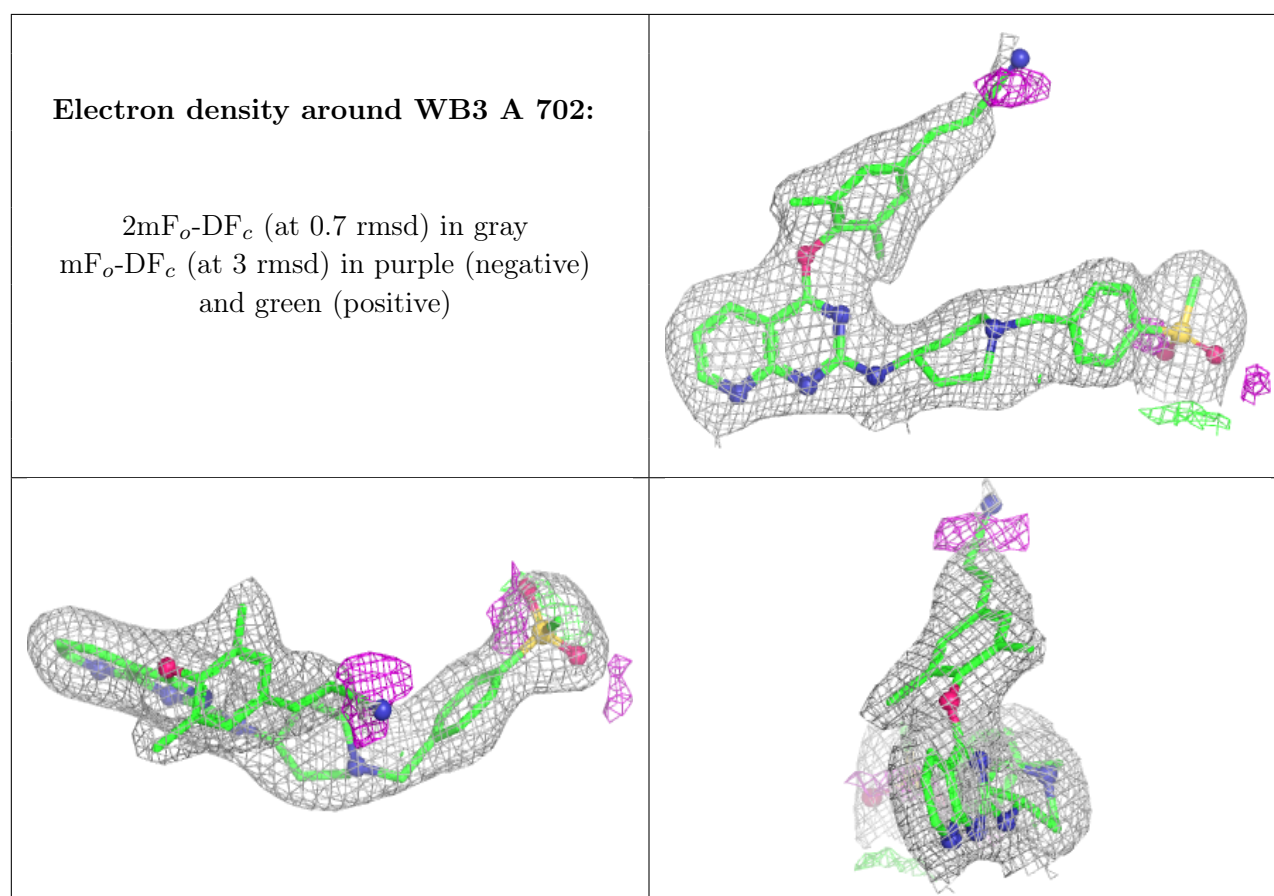
There are no monosaccharides in this entry.

6.4 Ligands [i](#)

In the following table, the Atoms column lists the number of modelled atoms in the group and the number defined in the chemical component dictionary. The B-factors column lists the minimum, median, 95th percentile and maximum values of B factors of atoms in the group. The column labelled 'Q< 0.9' lists the number of atoms with occupancy less than 0.9.

Mol	Type	Chain	Res	Atoms	RSCC	RSR	B-factors(\AA^2)	Q<0.9
3	SO4	B	906	5/5	0.66	0.13	114,126,148,151	0
3	SO4	A	706	5/5	0.77	0.10	89,96,108,125	0
3	SO4	B	907	5/5	0.80	0.12	88,95,104,109	0
5	EDO	A	703	4/4	0.80	0.15	51,54,55,57	0
5	EDO	A	704	4/4	0.82	0.12	69,70,70,84	0
7	MG	A	708	1/1	0.83	0.12	70,70,70,70	0
3	SO4	B	905	5/5	0.84	0.12	79,84,96,104	0
3	SO4	B	903	5/5	0.87	0.08	97,99,114,119	0
5	EDO	B	901	4/4	0.89	0.15	38,44,48,48	0
3	SO4	A	701	5/5	0.91	0.06	83,93,106,107	0
4	WB3	A	702	41/41	0.91	0.12	42,56,76,82	0
5	EDO	B	902	4/4	0.92	0.14	60,60,66,70	0
6	DMS	A	705	4/4	0.93	0.14	76,83,87,105	0
3	SO4	B	904	5/5	0.93	0.07	80,83,90,96	0
3	SO4	A	707	5/5	0.95	0.19	61,61,68,77	0

The following is a graphical depiction of the model fit to experimental electron density of all instances of the Ligand of Interest. In addition, ligands with molecular weight > 250 and outliers as shown on the geometry validation Tables will also be included. Each fit is shown from different orientation to approximate a three-dimensional view.



6.5 Other polymers [i](#)

There are no such residues in this entry.