



Full wwPDB X-ray Structure Validation Report ⓘ

Jun 24, 2024 – 07:03 AM EDT

PDB ID : 6VOU
Title : Aminoglycoside N-2'-Acetyltransferase-Ia [AAC(2')-Ia] in complex with acetylated-plazomicin and CoA
Authors : Bassenden, A.V.; Berghuis, A.M.
Deposited on : 2020-01-31
Resolution : 1.95 Å(reported)

This is a Full wwPDB X-ray Structure Validation Report for a publicly released PDB entry.

We welcome your comments at validation@mail.wwpdb.org

A user guide is available at

<https://www.wwpdb.org/validation/2017/XrayValidationReportHelp>

with specific help available everywhere you see the ⓘ symbol.

The types of validation reports are described at

<http://www.wwpdb.org/validation/2017/FAQs#types>.

The following versions of software and data (see [references ⓘ](#)) were used in the production of this report:

MolProbity	:	4.02b-467
Mogul	:	2022.3.0, CSD as543be (2022)
Xtriage (Phenix)	:	1.20.1
EDS	:	2.37.1
buster-report	:	1.1.7 (2018)
Percentile statistics	:	20191225.v01 (using entries in the PDB archive December 25th 2019)
Refmac	:	5.8.0158
CCP4	:	7.0.044 (Gargrove)
Ideal geometry (proteins)	:	Engh & Huber (2001)
Ideal geometry (DNA, RNA)	:	Parkinson et al. (1996)
Validation Pipeline (wwPDB-VP)	:	2.37.1

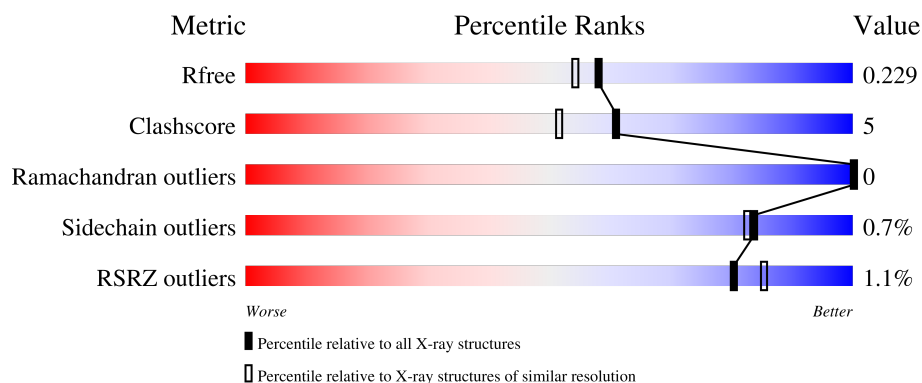
1 Overall quality at a glance

The following experimental techniques were used to determine the structure:

X-RAY DIFFRACTION

The reported resolution of this entry is 1.95 Å.

Percentile scores (ranging between 0-100) for global validation metrics of the entry are shown in the following graphic. The table shows the number of entries on which the scores are based.



Metric	Whole archive (#Entries)	Similar resolution (#Entries, resolution range(Å))
R_{free}	130704	2580 (1.96-1.96)
Clashscore	141614	2705 (1.96-1.96)
Ramachandran outliers	138981	2678 (1.96-1.96)
Sidechain outliers	138945	2678 (1.96-1.96)
RSRZ outliers	127900	2539 (1.96-1.96)

The table below summarises the geometric issues observed across the polymeric chains and their fit to the electron density. The red, orange, yellow and green segments of the lower bar indicate the fraction of residues that contain outliers for ≥ 3 , 2, 1 and 0 types of geometric quality criteria respectively. A grey segment represents the fraction of residues that are not modelled. The numeric value for each fraction is indicated below the corresponding segment, with a dot representing fractions $\leq 5\%$. The upper red bar (where present) indicates the fraction of residues that have poor fit to the electron density. The numeric value is given above the bar.

Mol	Chain	Length	Quality of chain
1	A	179	<div> <div>0%</div> <div> <div></div> <div>88%</div> <div>10%</div> <div></div> </div> <div></div> </div>
1	B	179	<div> <div>2%</div> <div> <div></div> <div>89%</div> <div>8%</div> <div></div> </div> <div></div> </div>

2 Entry composition [i](#)

There are 6 unique types of molecules in this entry. The entry contains 3096 atoms, of which 0 are hydrogens and 0 are deuteriums.

In the tables below, the ZeroOcc column contains the number of atoms modelled with zero occupancy, the AltConf column contains the number of residues with at least one atom in alternate conformation and the Trace column contains the number of residues modelled with at most 2 atoms.

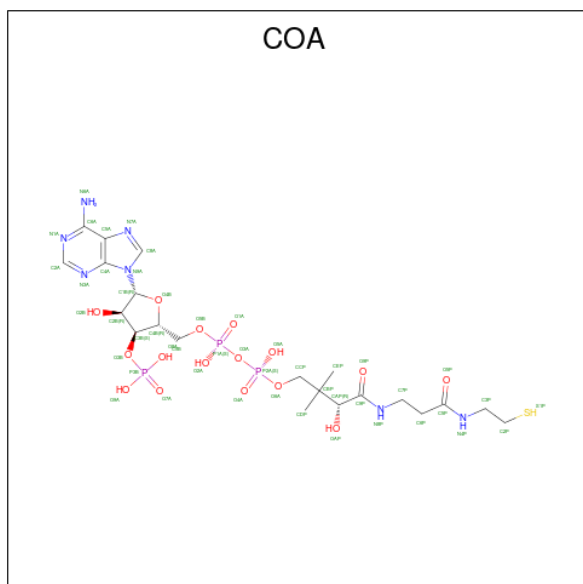
- Molecule 1 is a protein called Aminoglycoside 2'-N-acetyltransferase.

Mol	Chain	Residues	Atoms					ZeroOcc	AltConf	Trace
1	A	176	Total	C	N	O	S	0	1	0
			1386	882	237	259	8			
1	B	174	Total	C	N	O	S	0	1	0
			1370	873	233	256	8			

There are 2 discrepancies between the modelled and reference sequences:

Chain	Residue	Modelled	Actual	Comment	Reference
A	0	HIS	-	expression tag	UNP Q52424
B	0	HIS	-	expression tag	UNP Q52424

- Molecule 2 is COENZYME A (three-letter code: COA) (formula: $C_{21}H_{36}N_7O_{16}P_3S$).



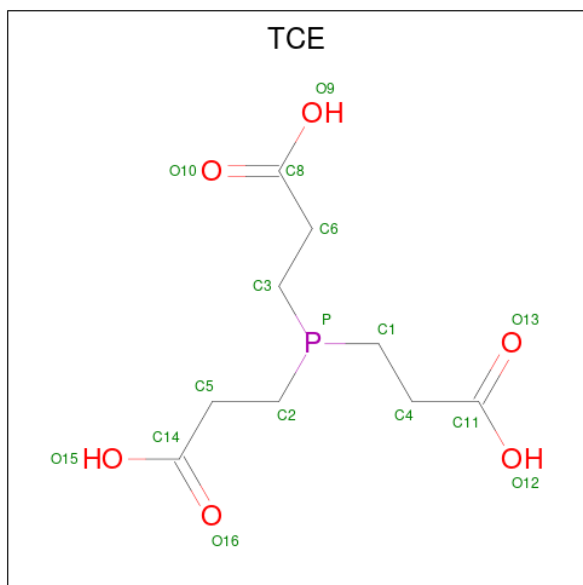
Mol	Chain	Residues	Atoms					ZeroOcc	AltConf
2	A	1	Total	C	N	O	P	0	0
			48	21	7	16	3		

Continued on next page...

Continued from previous page...

Mol	Chain	Residues	Atoms					ZeroOcc	AltConf
2	B	1	Total	C	N	O	P	S	
			48	21	7	16	3	1	
								0	0

- Molecule 3 is 3,3',3''-phosphanetriyltripropanoic acid (three-letter code: TCE) (formula: $C_9H_{15}O_6P$).



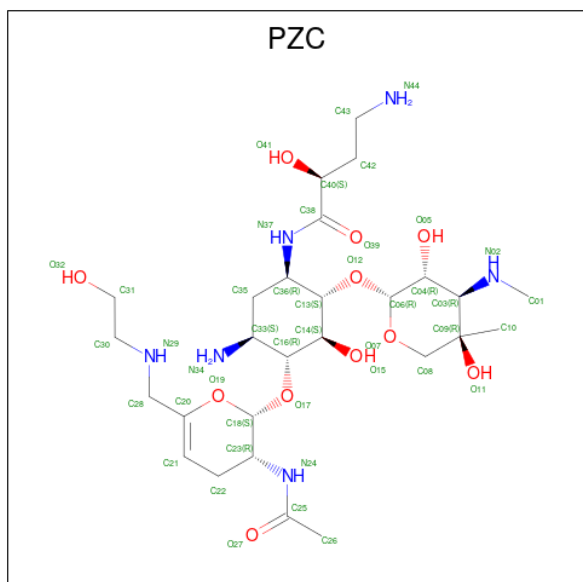
Mol	Chain	Residues	Atoms				ZeroOcc	AltConf
3	A	1	Total	C	O	P		
			16	9	6	1	0	0

- Molecule 4 is (4S)-2-METHYL-2,4-PENTANEDIOL (three-letter code: MPD) (formula: $C_6H_{14}O_2$).



Mol	Chain	Residues	Atoms	ZeroOcc	AltConf
4	A	1	Total C O 8 6 2	0	0
4	A	1	Total C O 8 6 2	0	0
4	B	1	Total C O 8 6 2	0	0

- Molecule 5 is (2S)-N-[(1R,2S,3S,4R,5S)-4-[[[(2S,3R)-3-(acetylamino)-6-[[[(2-hydroxyethyl)amino]methyl]-3,4-dihydro-2H-pyran-2-yl]oxy]-5-amino-2-[[[3-deoxy-4-C-methyl-3-(methylylamino)-beta-L-arabinopyranosyl]oxy]-3-hydroxycyclohexyl]-4-amino-2-hydroxybutana mide (three-letter code: PZC) (formula: C₂₇H₅₀N₆O₁₁) (labeled as "Ligand of Interest" by depositor).



Mol	Chain	Residues	Atoms				ZeroOcc	AltConf
5	A	1	Total 44	C 27	N 6	O 11	0	0
5	B	1	Total 44	C 27	N 6	O 11	0	0

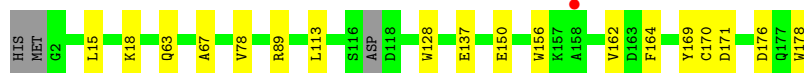
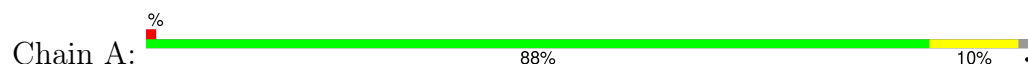
- Molecule 6 is water.

Mol	Chain	Residues	Atoms		ZeroOcc	AltConf
6	A	57	Total 57	O 57	0	1
6	B	59	Total 59	O 59	0	0

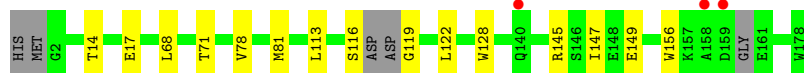
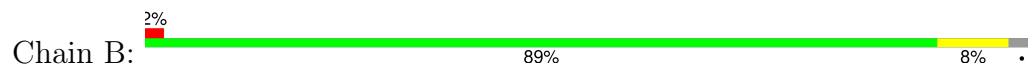
3 Residue-property plots [i](#)

These plots are drawn for all protein, RNA, DNA and oligosaccharide chains in the entry. The first graphic for a chain summarises the proportions of the various outlier classes displayed in the second graphic. The second graphic shows the sequence view annotated by issues in geometry and electron density. Residues are color-coded according to the number of geometric quality criteria for which they contain at least one outlier: green = 0, yellow = 1, orange = 2 and red = 3 or more. A red dot above a residue indicates a poor fit to the electron density ($RSRZ > 2$). Stretches of 2 or more consecutive residues without any outlier are shown as a green connector. Residues present in the sample, but not in the model, are shown in grey.

- Molecule 1: Aminoglycoside 2'-N-acetyltransferase



- Molecule 1: Aminoglycoside 2'-N-acetyltransferase



4 Data and refinement statistics

Property	Value	Source
Space group	P 32 2 1	Depositor
Cell constants a, b, c, α , β , γ	73.51Å 73.51Å 147.12Å 90.00° 90.00° 120.00°	Depositor
Resolution (Å)	63.66 – 1.95 63.66 – 1.95	Depositor EDS
% Data completeness (in resolution range)	98.8 (63.66-1.95) 98.8 (63.66-1.95)	Depositor EDS
R_{merge}	0.05	Depositor
R_{sym}	(Not available)	Depositor
$\langle I/\sigma(I) \rangle$ ¹	2.51 (at 1.95Å)	Xtriage
Refinement program	PHENIX 1.18.2_3874	Depositor
R, R_{free}	0.192 , 0.225 0.194 , 0.229	Depositor DCC
R_{free} test set	2001 reflections (5.90%)	wwPDB-VP
Wilson B-factor (Å ²)	39.6	Xtriage
Anisotropy	0.088	Xtriage
Bulk solvent k_{sol} (e/Å ³), B_{sol} (Å ²)	0.33 , 46.2	EDS
L-test for twinning ²	$\langle L \rangle = 0.49$, $\langle L^2 \rangle = 0.32$	Xtriage
Estimated twinning fraction	0.033 for -h,-k,l	Xtriage
F_o, F_c correlation	0.96	EDS
Total number of atoms	3096	wwPDB-VP
Average B, all atoms (Å ²)	46.0	wwPDB-VP

Xtriage's analysis on translational NCS is as follows: *The largest off-origin peak in the Patterson function is 4.45% of the height of the origin peak. No significant pseudotranslation is detected.*

¹Intensities estimated from amplitudes.

²Theoretical values of $\langle |L| \rangle$, $\langle L^2 \rangle$ for acentric reflections are 0.5, 0.333 respectively for untwinned datasets, and 0.375, 0.2 for perfectly twinned datasets.

5 Model quality

5.1 Standard geometry

Bond lengths and bond angles in the following residue types are not validated in this section: TCE, COA, MPD, PZC

The Z score for a bond length (or angle) is the number of standard deviations the observed value is removed from the expected value. A bond length (or angle) with $|Z| > 5$ is considered an outlier worth inspection. RMSZ is the root-mean-square of all Z scores of the bond lengths (or angles).

Mol	Chain	Bond lengths		Bond angles	
		RMSZ	$\# Z > 5$	RMSZ	$\# Z > 5$
1	A	0.36	0/1415	0.52	0/1905
1	B	0.36	0/1398	0.54	0/1882
All	All	0.36	0/2813	0.53	0/3787

There are no bond length outliers.

There are no bond angle outliers.

There are no chirality outliers.

There are no planarity outliers.

5.2 Too-close contacts

In the following table, the Non-H and H(model) columns list the number of non-hydrogen atoms and hydrogen atoms in the chain respectively. The H(added) column lists the number of hydrogen atoms added and optimized by MolProbity. The Clashes column lists the number of clashes within the asymmetric unit, whereas Symm-Clashes lists symmetry-related clashes.

Mol	Chain	Non-H	H(model)	H(added)	Clashes	Symm-Clashes
1	A	1386	0	1323	13	0
1	B	1370	0	1302	8	0
2	A	48	0	32	2	0
2	B	48	0	32	2	0
3	A	16	0	12	2	0
4	A	16	0	28	1	0
4	B	8	0	14	0	0
5	A	44	0	0	1	0
5	B	44	0	0	1	0
6	A	57	0	0	6	0
6	B	59	0	0	0	0
All	All	3096	0	2743	26	0

The all-atom clashscore is defined as the number of clashes found per 1000 atoms (including hydrogen atoms). The all-atom clashscore for this structure is 5.

All (26) close contacts within the same asymmetric unit are listed below, sorted by their clash magnitude.

Atom-1	Atom-2	Interatomic distance (Å)	Clash overlap (Å)
2:A:301:COA:O4B	2:A:301:COA:C1B	1.64	1.29
2:B:301:COA:C1B	2:B:301:COA:O4B	1.65	1.27
1:A:170:CYS:SG	6:A:403:HOH:O	2.23	0.97
1:A:63:GLN:OE1	6:A:401[B]:HOH:O	2.11	0.67
2:A:301:COA:H8A	6:A:419:HOH:O	1.93	0.67
1:B:68:LEU:O	1:B:71:THR:HG22	1.98	0.63
1:B:116:SER:O	1:B:119:GLY:N	2.34	0.61
1:B:78:VAL:HB	1:B:113:LEU:HB3	1.86	0.56
1:A:178:TRP:NE1	6:A:403:HOH:O	2.33	0.55
1:A:137:GLU:HB3	6:A:403:HOH:O	2.11	0.50
1:A:176:ASP:OD2	5:A:305:PZC:N44	2.46	0.48
1:B:128:TRP:CD2	1:B:156:TRP:HB2	2.50	0.47
3:A:302:TCE:H1	3:A:302:TCE:H5	1.82	0.46
1:B:14:THR:OG1	1:B:17:GLU:HG3	2.16	0.46
1:A:78:VAL:HB	1:A:113:LEU:HB3	1.98	0.46
1:A:128:TRP:CD2	1:A:156:TRP:HB2	2.51	0.45
1:B:149[B]:GLU:OE1	5:B:303:PZC:O05	2.35	0.44
1:B:81:MET:O	2:B:301:COA:H32	2.18	0.43
1:A:150:GLU:HB3	3:A:302:TCE:H6	2.00	0.42
1:B:145:ARG:HB3	1:B:147:ILE:HG12	2.02	0.42
1:A:15:LEU:HA	1:A:18:LYS:HE3	2.03	0.41
1:A:178:TRP:CD1	6:A:403:HOH:O	2.72	0.41
1:A:171:ASP:OD2	1:A:171:ASP:N	2.48	0.41
4:A:304:MPD:HM1	4:A:304:MPD:H4	1.95	0.40
1:A:162:VAL:HG13	1:A:164:PHE:CE1	2.56	0.40
1:A:67:ALA:HB3	1:A:169:TYR:HB2	2.03	0.40

There are no symmetry-related clashes.

5.3 Torsion angles [i](#)

5.3.1 Protein backbone [i](#)

In the following table, the Percentiles column shows the percent Ramachandran outliers of the chain as a percentile score with respect to all X-ray entries followed by that with respect to entries of similar resolution.

The Analysed column shows the number of residues for which the backbone conformation was analysed, and the total number of residues.

Mol	Chain	Analysed	Favoured	Allowed	Outliers	Percentiles	
1	A	173/179 (97%)	169 (98%)	4 (2%)	0	100	100
1	B	169/179 (94%)	166 (98%)	3 (2%)	0	100	100
All	All	342/358 (96%)	335 (98%)	7 (2%)	0	100	100

There are no Ramachandran outliers to report.

5.3.2 Protein sidechains ⓘ

In the following table, the Percentiles column shows the percent sidechain outliers of the chain as a percentile score with respect to all X-ray entries followed by that with respect to entries of similar resolution.

The Analysed column shows the number of residues for which the sidechain conformation was analysed, and the total number of residues.

Mol	Chain	Analysed	Rotameric	Outliers	Percentiles	
1	A	141/149 (95%)	140 (99%)	1 (1%)	84	82
1	B	139/149 (93%)	138 (99%)	1 (1%)	84	82
All	All	280/298 (94%)	278 (99%)	2 (1%)	84	82

All (2) residues with a non-rotameric sidechain are listed below:

Mol	Chain	Res	Type
1	A	89	ARG
1	B	122	LEU

Sometimes sidechains can be flipped to improve hydrogen bonding and reduce clashes. All (3) such sidechains are listed below:

Mol	Chain	Res	Type
1	A	63	GLN
1	A	65	HIS
1	B	90	GLN

5.3.3 RNA ⓘ

There are no RNA molecules in this entry.

5.4 Non-standard residues in protein, DNA, RNA chains [i](#)

There are no non-standard protein/DNA/RNA residues in this entry.

5.5 Carbohydrates [i](#)

There are no monosaccharides in this entry.

5.6 Ligand geometry [i](#)

8 ligands are modelled in this entry.

In the following table, the Counts columns list the number of bonds (or angles) for which Mogul statistics could be retrieved, the number of bonds (or angles) that are observed in the model and the number of bonds (or angles) that are defined in the Chemical Component Dictionary. The Link column lists molecule types, if any, to which the group is linked. The Z score for a bond length (or angle) is the number of standard deviations the observed value is removed from the expected value. A bond length (or angle) with $|Z| > 2$ is considered an outlier worth inspection. RMSZ is the root-mean-square of all Z scores of the bond lengths (or angles).

Mol	Type	Chain	Res	Link	Bond lengths			Bond angles		
					Counts	RMSZ	# Z > 2	Counts	RMSZ	# Z > 2
2	COA	B	301	-	43,50,50	3.77	15 (34%)	56,75,75	1.88	12 (21%)
4	MPD	A	303	-	7,7,7	0.30	0	9,10,10	0.17	0
4	MPD	A	304	-	7,7,7	0.31	0	9,10,10	0.28	0
2	COA	A	301	-	43,50,50	3.75	17 (39%)	56,75,75	1.64	6 (10%)
5	PZC	A	305	-	44,46,46	4.12	21 (47%)	44,65,65	1.46	8 (18%)
4	MPD	B	302	-	7,7,7	0.29	0	9,10,10	0.22	0
5	PZC	B	303	-	44,46,46	4.04	22 (50%)	44,65,65	1.32	7 (15%)
3	TCE	A	302	-	12,15,15	1.38	0	12,18,18	1.91	2 (16%)

In the following table, the Chirals column lists the number of chiral outliers, the number of chiral centers analysed, the number of these observed in the model and the number defined in the Chemical Component Dictionary. Similar counts are reported in the Torsion and Rings columns. '-' means no outliers of that kind were identified.

Mol	Type	Chain	Res	Link	Chirals	Torsions	Rings
2	COA	B	301	-	-	4/44/64/64	0/3/3/3
4	MPD	A	303	-	-	3/5/5/5	-
4	MPD	A	304	-	-	2/5/5/5	-
2	COA	A	301	-	-	1/44/64/64	0/3/3/3
5	PZC	A	305	-	-	10/27/83/83	0/3/3/3

Continued on next page...

Continued from previous page...

Mol	Type	Chain	Res	Link	Chirals	Torsions	Rings
4	MPD	B	302	-	-	4/5/5/5	-
5	PZC	B	303	-	-	6/27/83/83	0/3/3/3
3	TCE	A	302	-	-	9/15/15/15	-

All (75) bond length outliers are listed below:

Mol	Chain	Res	Type	Atoms	Z	Observed(Å)	Ideal(Å)
5	B	303	PZC	C21-C20	18.81	1.58	1.32
2	B	301	COA	O4B-C1B	18.63	1.65	1.40
5	A	305	PZC	C21-C20	18.45	1.58	1.32
2	A	301	COA	O4B-C1B	18.17	1.64	1.40
5	A	305	PZC	C18-C23	-7.97	1.36	1.52
5	B	303	PZC	C18-C23	-7.82	1.37	1.52
5	A	305	PZC	C38-N37	7.15	1.49	1.34
2	A	301	COA	P3B-O3B	6.79	1.71	1.59
5	B	303	PZC	C38-N37	6.79	1.48	1.34
2	A	301	COA	C5P-N4P	6.60	1.49	1.33
2	B	301	COA	P3B-O3B	6.35	1.70	1.59
5	A	305	PZC	C22-C23	5.99	1.59	1.52
5	B	303	PZC	C22-C23	5.91	1.59	1.52
5	A	305	PZC	O19-C18	5.90	1.57	1.44
2	B	301	COA	C9P-N8P	5.84	1.47	1.33
2	B	301	COA	C5P-N4P	5.80	1.47	1.33
2	A	301	COA	C9P-N8P	5.74	1.47	1.33
5	B	303	PZC	O19-C18	5.46	1.56	1.44
2	B	301	COA	O4B-C4B	-5.17	1.33	1.45
5	A	305	PZC	C22-C21	-5.13	1.39	1.50
5	B	303	PZC	C22-C21	-5.10	1.39	1.50
2	A	301	COA	O4B-C4B	-5.03	1.33	1.45
2	B	301	COA	P2A-O3A	4.41	1.64	1.59
2	A	301	COA	C6A-N6A	4.29	1.49	1.34
5	A	305	PZC	C08-C09	4.26	1.56	1.52
5	A	305	PZC	C36-N37	4.23	1.53	1.46
5	A	305	PZC	O07-C06	4.19	1.50	1.41
2	B	301	COA	C6A-N6A	4.18	1.49	1.34
5	A	305	PZC	C03-N02	4.02	1.50	1.45
5	A	305	PZC	C28-C20	3.99	1.58	1.48
5	B	303	PZC	C08-C09	3.89	1.56	1.52
5	B	303	PZC	C03-N02	3.80	1.50	1.45
5	B	303	PZC	C36-N37	3.80	1.52	1.46
5	B	303	PZC	C28-C20	3.78	1.57	1.48
5	A	305	PZC	C25-N24	3.66	1.46	1.34

Continued on next page...

Continued from previous page...

Mol	Chain	Res	Type	Atoms	Z	Observed(Å)	Ideal(Å)
5	B	303	PZC	C25-N24	3.61	1.46	1.34
5	A	305	PZC	C40-C38	3.58	1.56	1.52
2	A	301	COA	C1B-N9A	-3.51	1.41	1.49
2	B	301	COA	C1B-N9A	-3.50	1.41	1.49
5	B	303	PZC	O07-C06	3.49	1.49	1.41
5	A	305	PZC	O07-C08	3.32	1.47	1.43
2	A	301	COA	P2A-O3A	3.28	1.63	1.59
2	B	301	COA	O9P-C9P	-3.20	1.17	1.23
2	B	301	COA	OAP-CAP	-3.02	1.37	1.42
5	B	303	PZC	C10-C09	2.94	1.57	1.52
5	A	305	PZC	C10-C09	2.84	1.57	1.52
2	B	301	COA	C3B-C4B	2.82	1.60	1.52
2	A	301	COA	C3B-C4B	2.77	1.60	1.52
2	A	301	COA	C2A-N3A	2.77	1.36	1.32
5	A	305	PZC	C42-C40	2.73	1.57	1.53
2	A	301	COA	P1A-O3A	2.70	1.62	1.59
5	A	305	PZC	C04-C03	-2.70	1.48	1.53
5	B	303	PZC	O12-C06	2.70	1.49	1.41
2	A	301	COA	O9P-C9P	-2.64	1.18	1.23
2	A	301	COA	C4A-N3A	-2.61	1.32	1.35
5	A	305	PZC	O12-C06	2.61	1.49	1.41
2	A	301	COA	O3B-C3B	-2.57	1.35	1.44
5	A	305	PZC	O39-C38	-2.56	1.18	1.23
2	B	301	COA	O3B-C3B	-2.55	1.35	1.44
5	B	303	PZC	O39-C38	-2.54	1.18	1.23
2	B	301	COA	C2A-N3A	2.54	1.36	1.32
5	B	303	PZC	O05-C04	-2.50	1.36	1.43
2	A	301	COA	C7P-N8P	2.48	1.51	1.46
5	B	303	PZC	C04-C03	-2.44	1.48	1.53
5	A	305	PZC	O05-C04	-2.37	1.37	1.43
2	B	301	COA	P1A-O5B	2.37	1.68	1.59
5	B	303	PZC	O07-C08	2.32	1.46	1.43
5	B	303	PZC	C42-C40	2.30	1.56	1.53
2	A	301	COA	P1A-O5B	2.24	1.68	1.59
5	A	305	PZC	O17-C18	2.20	1.48	1.41
5	B	303	PZC	O27-C25	-2.20	1.18	1.23
5	B	303	PZC	O17-C18	2.09	1.47	1.41
5	B	303	PZC	C40-C38	2.07	1.55	1.52
2	A	301	COA	OAP-CAP	-2.06	1.38	1.42
2	B	301	COA	P1A-O3A	2.02	1.61	1.59

All (35) bond angle outliers are listed below:

Mol	Chain	Res	Type	Atoms	Z	Observed(°)	Ideal(°)
2	B	301	COA	N3A-C2A-N1A	-6.52	119.82	128.67
2	A	301	COA	C5A-C6A-N6A	6.22	129.79	120.31
2	B	301	COA	C5A-C6A-N6A	5.22	128.27	120.31
2	A	301	COA	N3A-C2A-N1A	-5.15	121.68	128.67
5	A	305	PZC	C08-O07-C06	4.25	118.07	111.53
2	B	301	COA	C7P-C6P-C5P	-4.18	105.44	112.39
2	A	301	COA	N6A-C6A-N1A	-4.16	109.45	118.33
3	A	302	TCE	C3-P-C2	4.11	114.05	100.95
2	B	301	COA	C6P-C5P-N4P	4.04	123.71	116.34
2	B	301	COA	C2P-C3P-N4P	-3.94	103.38	112.31
5	A	305	PZC	O07-C06-C04	3.46	115.27	109.99
2	A	301	COA	O6A-CCP-CBP	-3.40	105.08	110.55
2	B	301	COA	O5P-C5P-N4P	-3.31	116.53	123.03
2	B	301	COA	N6A-C6A-N1A	-3.24	111.41	118.33
5	B	303	PZC	C01-N02-C03	-3.10	110.20	114.47
5	A	305	PZC	C23-N24-C25	-3.02	118.86	122.90
5	B	303	PZC	C23-N24-C25	-2.75	119.21	122.90
5	A	305	PZC	C06-O12-C13	-2.75	111.47	117.98
5	A	305	PZC	C01-N02-C03	-2.72	110.73	114.47
5	B	303	PZC	C26-C25-N24	2.63	120.48	116.12
5	B	303	PZC	C18-C23-N24	-2.59	106.60	110.92
2	A	301	COA	C4B-O4B-C1B	-2.53	107.61	109.92
5	B	303	PZC	O17-C16-C14	2.40	113.34	107.23
2	B	301	COA	C6P-C7P-N8P	-2.39	106.91	112.00
2	B	301	COA	C4B-O4B-C1B	-2.38	107.74	109.92
5	A	305	PZC	C13-C36-N37	2.33	114.38	110.57
2	B	301	COA	O6A-CCP-CBP	-2.30	106.84	110.55
2	A	301	COA	O5A-P2A-O3A	2.30	113.49	107.27
5	A	305	PZC	C26-C25-N24	2.30	119.93	116.12
5	A	305	PZC	C18-C23-N24	-2.20	107.25	110.92
3	A	302	TCE	O9-C8-C6	2.18	120.89	114.00
5	B	303	PZC	O27-C25-N24	-2.14	118.19	121.98
5	B	303	PZC	C35-C36-C13	2.12	113.69	109.75
2	B	301	COA	C7P-N8P-C9P	-2.11	118.75	122.55
2	B	301	COA	CEP-CBP-CAP	2.05	112.27	108.77

There are no chirality outliers.

All (39) torsion outliers are listed below:

Mol	Chain	Res	Type	Atoms
3	A	302	TCE	P-C2-C5-C14
3	A	302	TCE	C5-C2-P-C3
3	A	302	TCE	C5-C2-P-C1

Continued on next page...

Continued from previous page...

Mol	Chain	Res	Type	Atoms
4	A	304	MPD	C2-C3-C4-O4
4	A	304	MPD	C2-C3-C4-C5
4	B	302	MPD	C2-C3-C4-C5
5	A	305	PZC	N29-C30-C31-O32
5	A	305	PZC	O41-C40-C42-C43
5	B	303	PZC	O41-C40-C42-C43
5	A	305	PZC	O19-C18-O17-C16
5	B	303	PZC	O19-C18-O17-C16
2	B	301	COA	C6P-C5P-N4P-C3P
2	B	301	COA	O5P-C5P-N4P-C3P
5	B	303	PZC	C13-C36-N37-C38
5	A	305	PZC	C38-C40-C42-C43
5	B	303	PZC	C14-C16-O17-C18
3	A	302	TCE	P-C3-C6-C8
2	B	301	COA	C5B-O5B-P1A-O1A
5	A	305	PZC	C13-C36-N37-C38
3	A	302	TCE	C3-C6-C8-O9
5	A	305	PZC	C14-C16-O17-C18
5	A	305	PZC	C04-C03-N02-C01
5	A	305	PZC	C20-C28-N29-C30
5	B	303	PZC	C04-C03-N02-C01
3	A	302	TCE	C3-C6-C8-O10
3	A	302	TCE	O12-C11-C4-C1
3	A	302	TCE	O13-C11-C4-C1
5	A	305	PZC	C40-C42-C43-N44
5	A	305	PZC	C31-C30-N29-C28
2	A	301	COA	P2A-O3A-P1A-O2A
4	A	303	MPD	O2-C2-C3-C4
4	A	303	MPD	C2-C3-C4-O4
4	B	302	MPD	C2-C3-C4-O4
3	A	302	TCE	O15-C14-C5-C2
5	B	303	PZC	C31-C30-N29-C28
4	A	303	MPD	C1-C2-C3-C4
4	B	302	MPD	C1-C2-C3-C4
4	B	302	MPD	CM-C2-C3-C4
2	B	301	COA	S1P-C2P-C3P-N4P

There are no ring outliers.

6 monomers are involved in 9 short contacts:

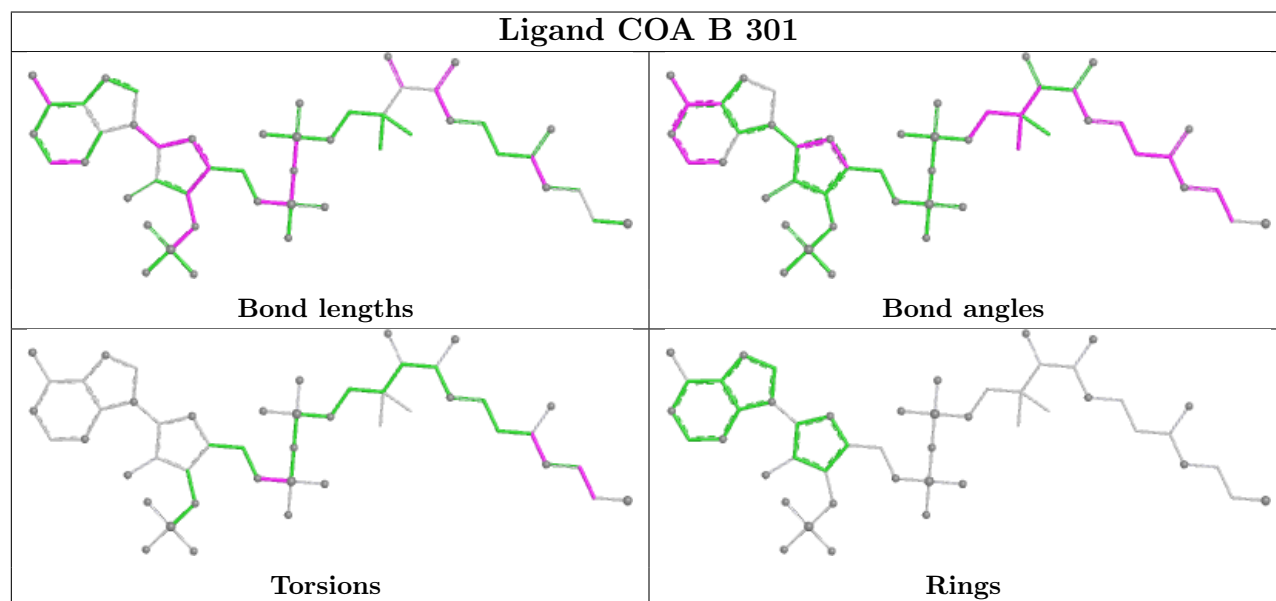
Mol	Chain	Res	Type	Clashes	Symm-Clashes
2	B	301	COA	2	0

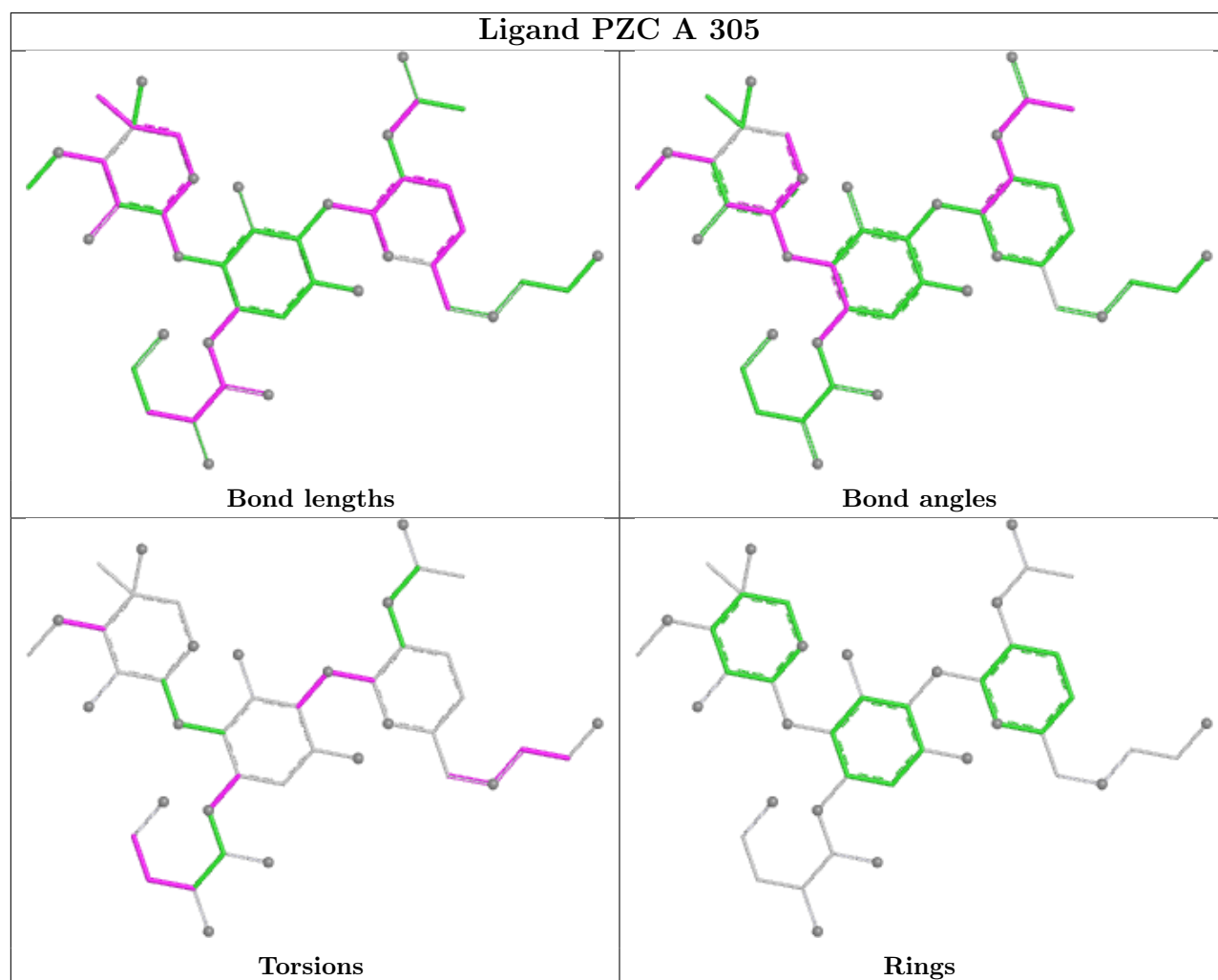
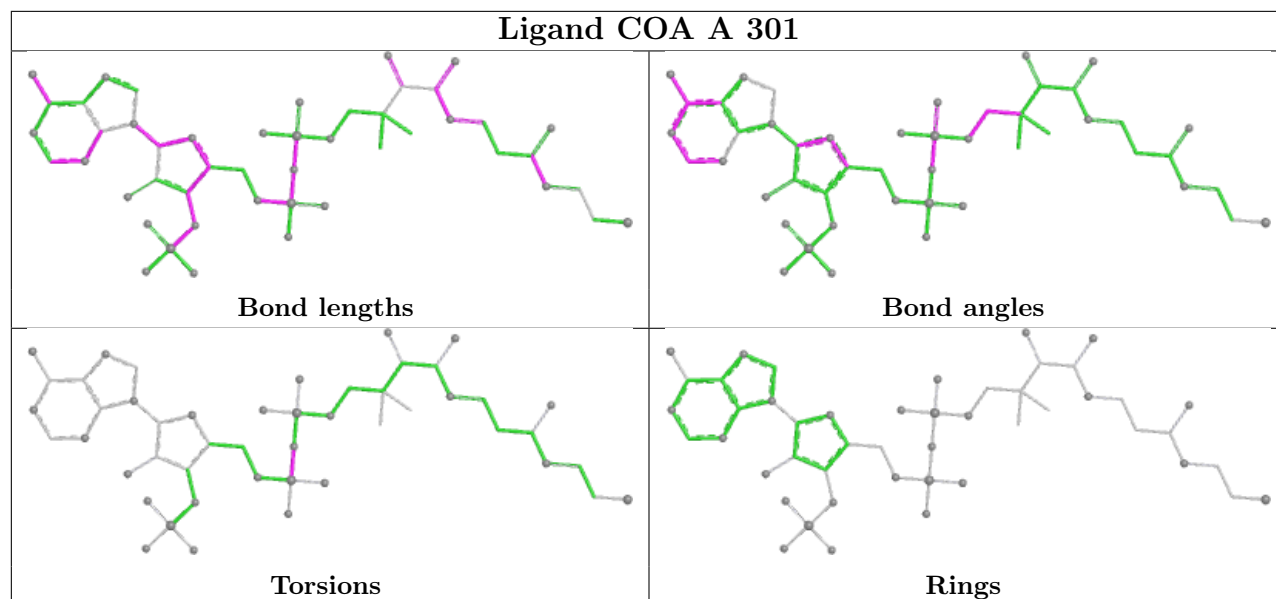
Continued on next page...

Continued from previous page...

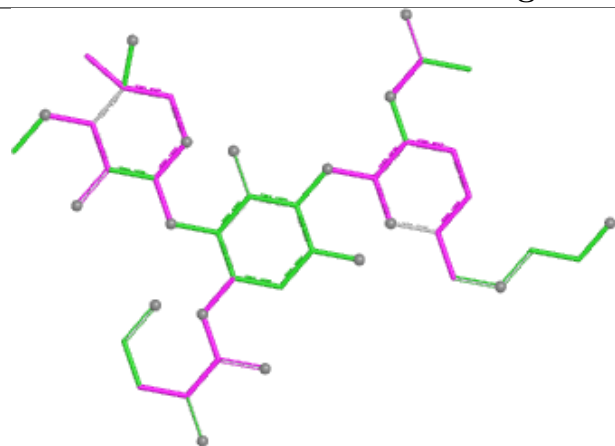
Mol	Chain	Res	Type	Clashes	Symm-Clashes
4	A	304	MPD	1	0
2	A	301	COA	2	0
5	A	305	PZC	1	0
5	B	303	PZC	1	0
3	A	302	TCE	2	0

The following is a two-dimensional graphical depiction of Mogul quality analysis of bond lengths, bond angles, torsion angles, and ring geometry for all instances of the Ligand of Interest. In addition, ligands with molecular weight > 250 and outliers as shown on the validation Tables will also be included. For torsion angles, if less than 5% of the Mogul distribution of torsion angles is within 10 degrees of the torsion angle in question, then that torsion angle is considered an outlier. Any bond that is central to one or more torsion angles identified as an outlier by Mogul will be highlighted in the graph. For rings, the root-mean-square deviation (RMSD) between the ring in question and similar rings identified by Mogul is calculated over all ring torsion angles. If the average RMSD is greater than 60 degrees and the minimal RMSD between the ring in question and any Mogul-identified rings is also greater than 60 degrees, then that ring is considered an outlier. The outliers are highlighted in purple. The color gray indicates Mogul did not find sufficient equivalents in the CSD to analyse the geometry.

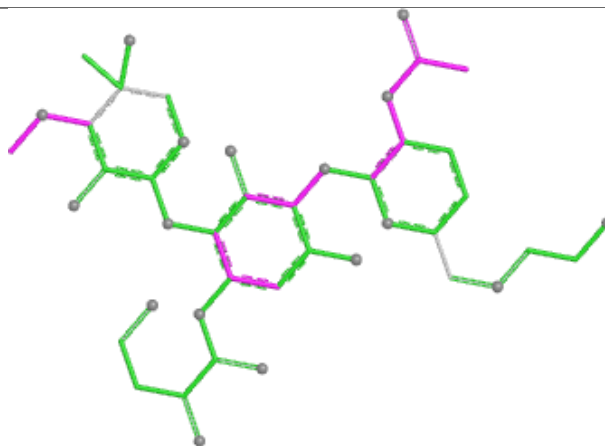




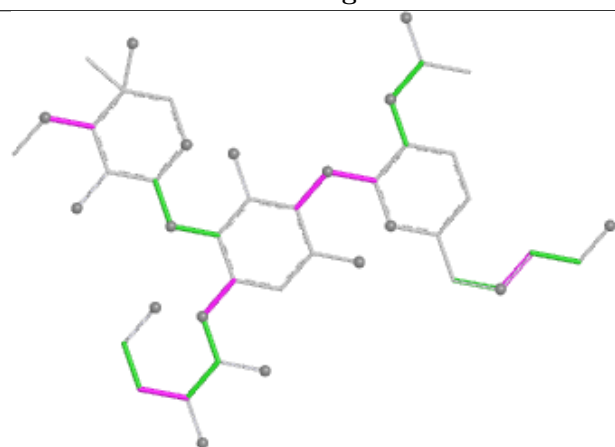
Ligand PZC B 303



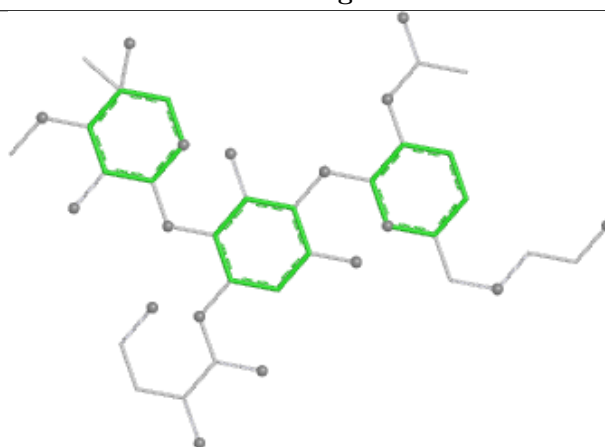
Bond lengths



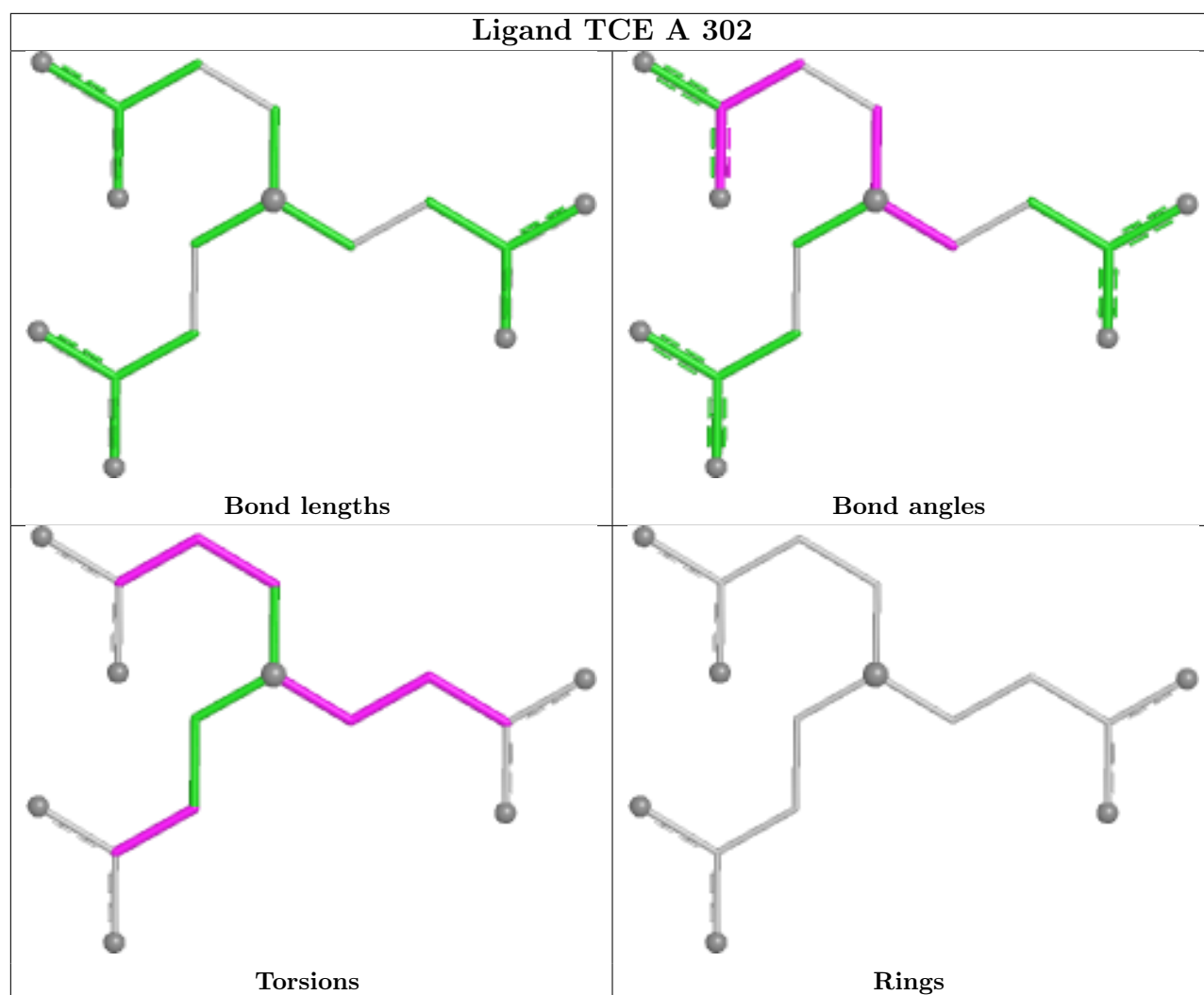
Bond angles



Torsions



Rings



5.7 Other polymers [i](#)

There are no such residues in this entry.

5.8 Polymer linkage issues [i](#)

There are no chain breaks in this entry.

6 Fit of model and data [i](#)

6.1 Protein, DNA and RNA chains [i](#)

In the following table, the column labelled ‘#RSRZ> 2’ contains the number (and percentage) of RSRZ outliers, followed by percent RSRZ outliers for the chain as percentile scores relative to all X-ray entries and entries of similar resolution. The OWAB column contains the minimum, median, 95th percentile and maximum values of the occupancy-weighted average B-factor per residue. The column labelled ‘Q< 0.9’ lists the number of (and percentage) of residues with an average occupancy less than 0.9.

Mol	Chain	Analysed	<RSRZ>	#RSRZ>2	OWAB(Å ²)	Q<0.9
1	A	176/179 (98%)	-0.02	1 (0%) 89 93	32, 43, 70, 81	0
1	B	174/179 (97%)	0.02	3 (1%) 70 77	32, 43, 70, 83	0
All	All	350/358 (97%)	0.00	4 (1%) 80 85	32, 43, 70, 83	0

All (4) RSRZ outliers are listed below:

Mol	Chain	Res	Type	RSRZ
1	B	159	ASP	2.7
1	B	140	GLN	2.5
1	B	158	ALA	2.2
1	A	158	ALA	2.1

6.2 Non-standard residues in protein, DNA, RNA chains [i](#)

There are no non-standard protein/DNA/RNA residues in this entry.

6.3 Carbohydrates [i](#)

There are no monosaccharides in this entry.

6.4 Ligands [i](#)

In the following table, the Atoms column lists the number of modelled atoms in the group and the number defined in the chemical component dictionary. The B-factors column lists the minimum, median, 95th percentile and maximum values of B factors of atoms in the group. The column labelled ‘Q< 0.9’ lists the number of atoms with occupancy less than 0.9.

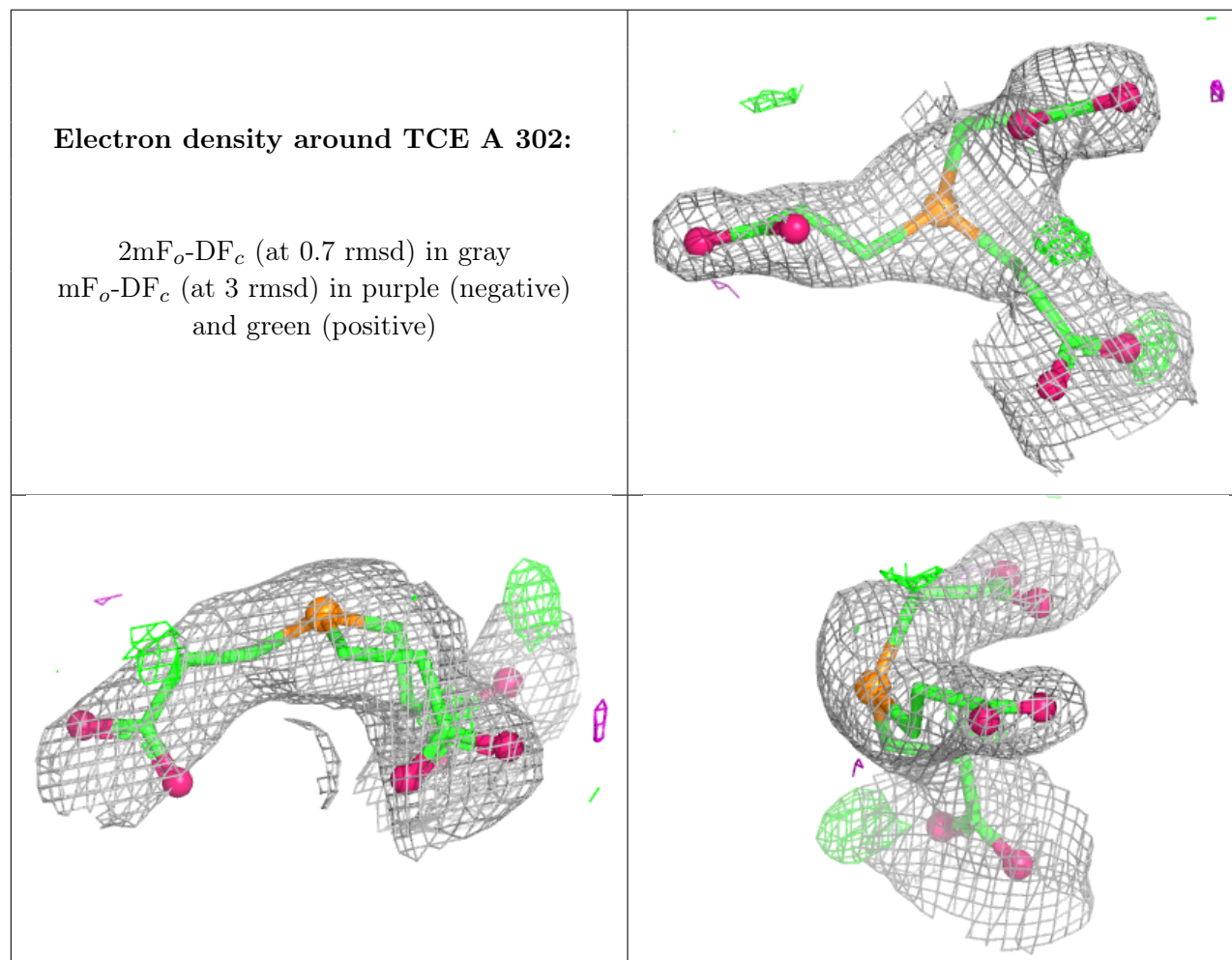
Mol	Type	Chain	Res	Atoms	RSCC	RSR	B-factors(Å ²)	Q<0.9
3	TCE	A	302	16/16	0.79	0.21	69,77,85,89	0

Continued on next page...

Continued from previous page...

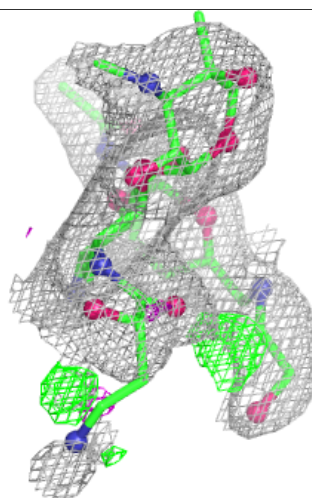
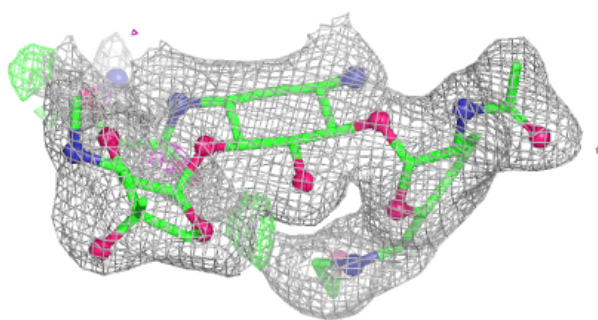
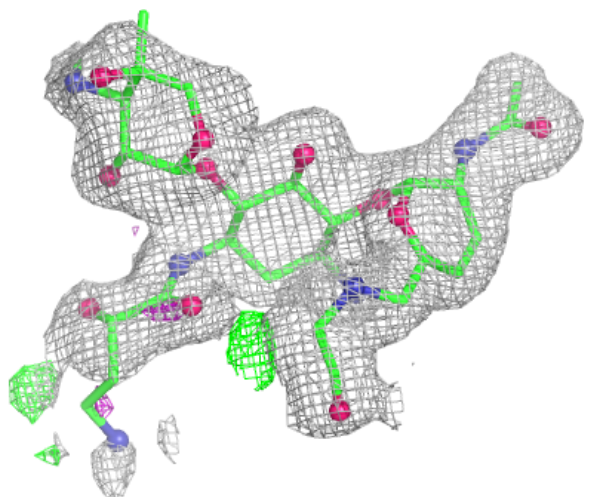
Mol	Type	Chain	Res	Atoms	RSCC	RSR	B-factors(\AA^2)	Q<0.9
4	MPD	B	302	8/8	0.79	0.25	64,73,77,82	0
4	MPD	A	304	8/8	0.80	0.31	79,88,89,91	0
4	MPD	A	303	8/8	0.84	0.15	81,90,91,92	0
5	PZC	A	305	44/44	0.92	0.13	36,52,67,72	0
2	COA	A	301	48/48	0.94	0.13	39,49,71,79	0
5	PZC	B	303	44/44	0.94	0.12	34,42,58,63	0
2	COA	B	301	48/48	0.96	0.11	39,58,75,83	0

The following is a graphical depiction of the model fit to experimental electron density of all instances of the Ligand of Interest. In addition, ligands with molecular weight > 250 and outliers as shown on the geometry validation Tables will also be included. Each fit is shown from different orientation to approximate a three-dimensional view.



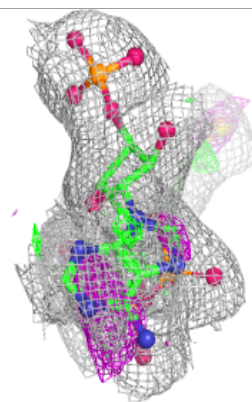
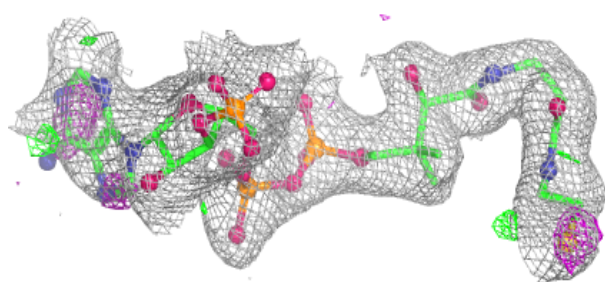
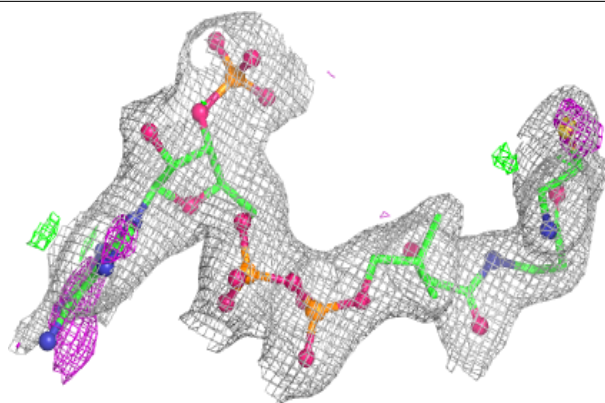
Electron density around PZC A 305:

$2mF_o-DF_c$ (at 0.7 rmsd) in gray
 mF_o-DF_c (at 3 rmsd) in purple (negative)
and green (positive)



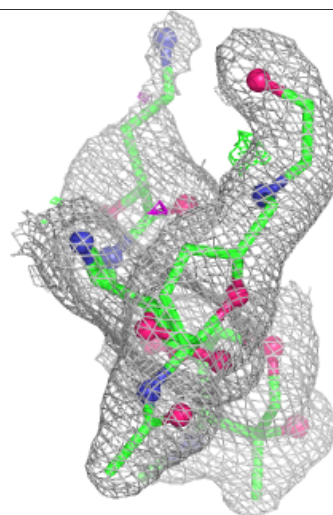
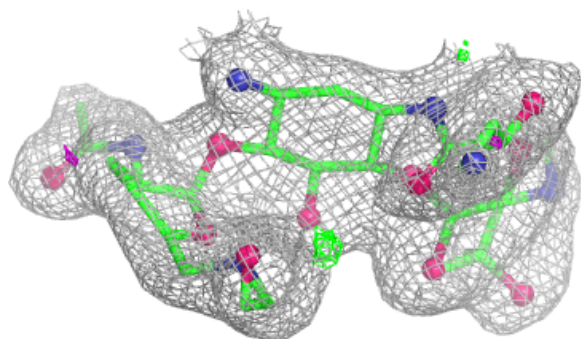
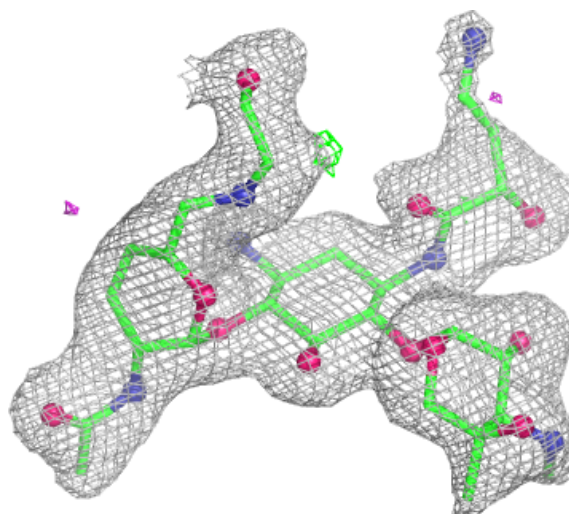
Electron density around COA A 301:

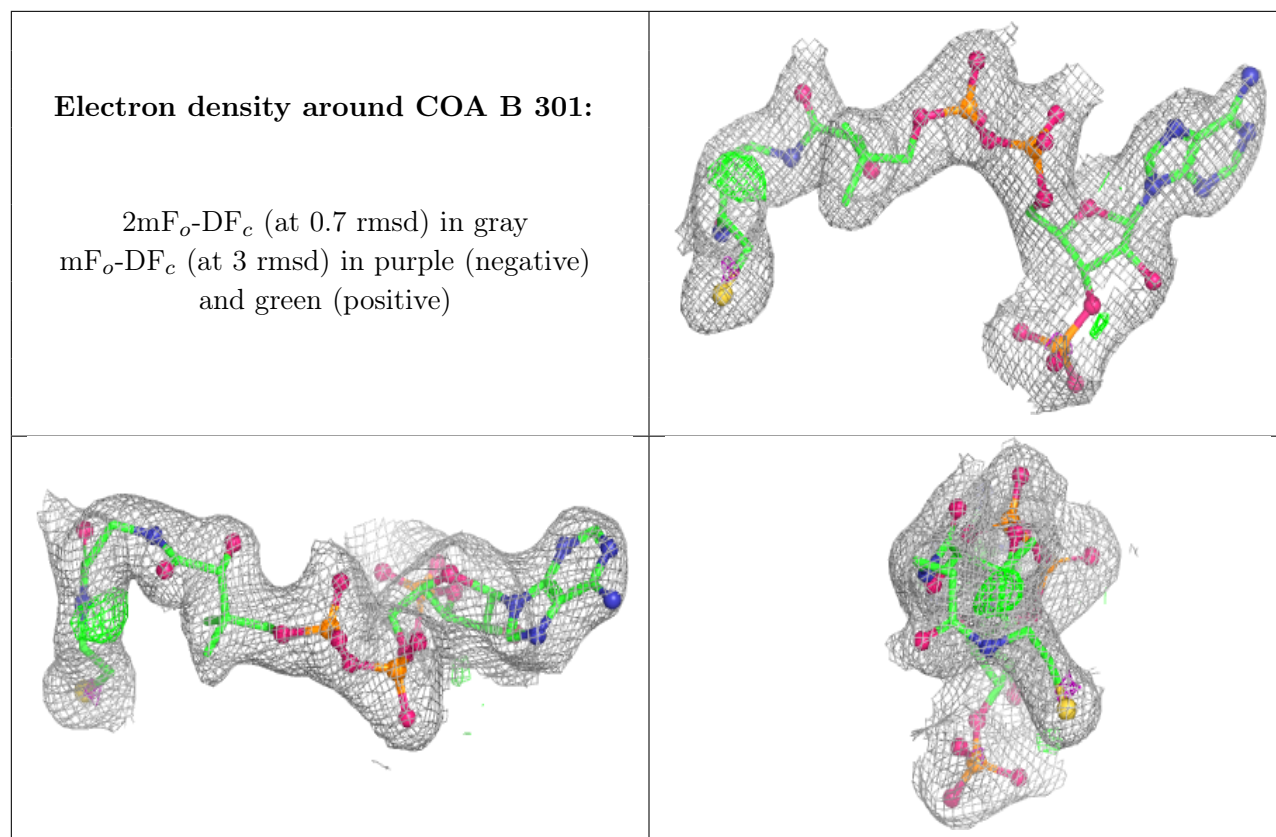
$2mF_o-DF_c$ (at 0.7 rmsd) in gray
 mF_o-DF_c (at 3 rmsd) in purple (negative)
and green (positive)



Electron density around PZC B 303:

$2mF_o-DF_c$ (at 0.7 rmsd) in gray
 mF_o-DF_c (at 3 rmsd) in purple (negative)
and green (positive)





6.5 Other polymers [i](#)

There are no such residues in this entry.