



Full wwPDB EM Validation Report ⓘ

Oct 19, 2024 – 04:40 PM EDT

PDB ID : 5VLJ
EMDB ID : EMD-8706
Title : Cryo-EM structure of yeast cytoplasmic dynein with Walker B mutation at AAA3 in presence of ATP-VO4
Authors : Cianfrocco, M.A.; DeSantis, M.E.; Htet, Z.M.; Tran, P.T.; Reck-Peterson, S.L.; Leschziner, A.E.
Deposited on : 2017-04-25
Resolution : 10.50 Å(reported)

This is a Full wwPDB EM Validation Report for a publicly released PDB entry.

We welcome your comments at validation@mail.wwpdb.org

A user guide is available at

<https://www.wwpdb.org/validation/2017/EMValidationReportHelp>
with specific help available everywhere you see the ⓘ symbol.

The types of validation reports are described at

<http://www.wwpdb.org/validation/2017/FAQs#types>.

The following versions of software and data (see [references ⓘ](#)) were used in the production of this report:

EMDB validation analysis : 0.0.1.dev113
MolProbity : 4.02b-467
Percentile statistics : 20231227.v01 (using entries in the PDB archive December 27th 2023)
MapQ : 1.9.13
Ideal geometry (proteins) : Engh & Huber (2001)
Ideal geometry (DNA, RNA) : Parkinson et al. (1996)
Validation Pipeline (wwPDB-VP) : 2.39

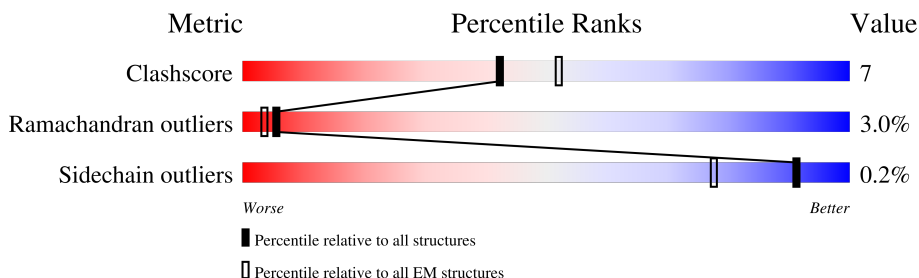
1 Overall quality at a glance

The following experimental techniques were used to determine the structure:

ELECTRON MICROSCOPY

The reported resolution of this entry is 10.50 Å.

Percentile scores (ranging between 0-100) for global validation metrics of the entry are shown in the following graphic. The table shows the number of entries on which the scores are based.



Metric	Whole archive (#Entries)	EM structures (#Entries)
Clashscore	210492	15764
Ramachandran outliers	207382	16835
Sidechain outliers	206894	16415

The table below summarises the geometric issues observed across the polymeric chains and their fit to the map. The red, orange, yellow and green segments of the bar indicate the fraction of residues that contain outliers for ≥ 3 , 2, 1 and 0 types of geometric quality criteria respectively. A grey segment represents the fraction of residues that are not modelled. The numeric value for each fraction is indicated below the corresponding segment, with a dot representing fractions $\leq 5\%$. The upper red bar (where present) indicates the fraction of residues that have poor fit to the EM map (all-atom inclusion $< 40\%$). The numeric value is given above the bar.

Mol	Chain	Length	Quality of chain
1	A	2376	<div> <div>10%</div> <div>86%</div> <div>13%</div> </div>
2	B	354	<div> <div>19%</div> <div>84%</div> <div>14%</div> </div>
2	C	354	<div> <div>79%</div> <div>19%</div> </div>

2 Entry composition

There are 2 unique types of molecules in this entry. The entry contains 49789 atoms, of which 24885 are hydrogens and 0 are deuteriums.

In the tables below, the AltConf column contains the number of residues with at least one atom in alternate conformation and the Trace column contains the number of residues modelled with at most 2 atoms.

- Molecule 1 is a protein called Dynein heavy chain, cytoplasmic.

Mol	Chain	Residues	Atoms						AltConf	Trace
1	A	2376	Total	C	H	N	O	S	0	0
			38423	12301	19243	3182	3607	90		

There are 12 discrepancies between the modelled and reference sequences:

Chain	Residue	Modelled	Actual	Comment	Reference
A	1575	PHE	LEU	conflict	UNP P36022
A	1578	SER	PHE	conflict	UNP P36022
A	1668	GLU	GLN	conflict	UNP P36022
A	1777	VAL	ILE	conflict	UNP P36022
A	1984	VAL	ILE	conflict	UNP P36022
A	2936	VAL	ILE	conflict	UNP P36022
A	3343	GLY	ALA	conflict	UNP P36022
A	3444	VAL	ILE	conflict	UNP P36022
A	3556	ARG	LYS	conflict	UNP P36022
A	3742	ASP	ASN	conflict	UNP P36022
A	3895	VAL	PHE	conflict	UNP P36022
A	4072	ASP	ASN	conflict	UNP P36022

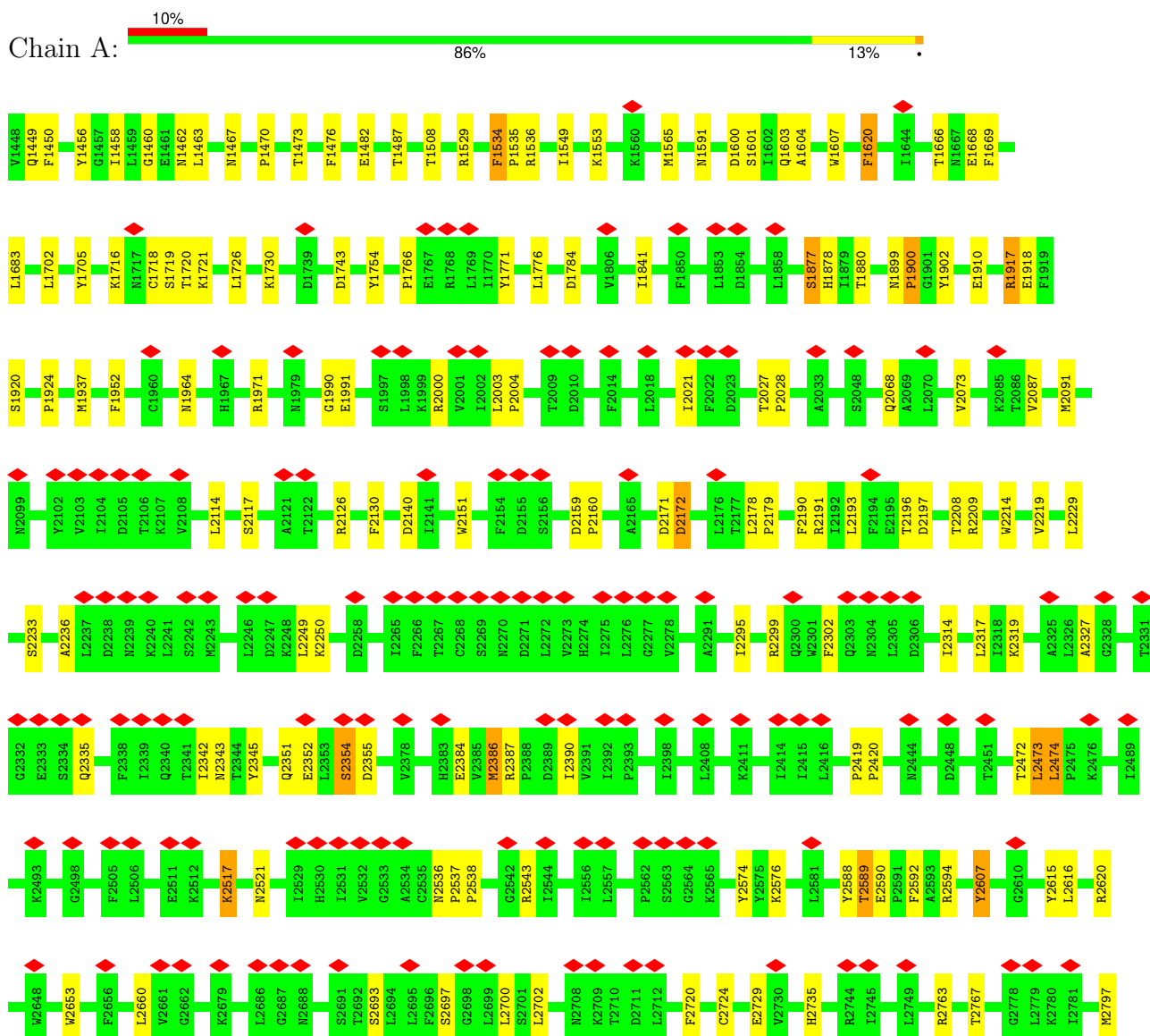
- Molecule 2 is a protein called Nuclear distribution protein PAC1.

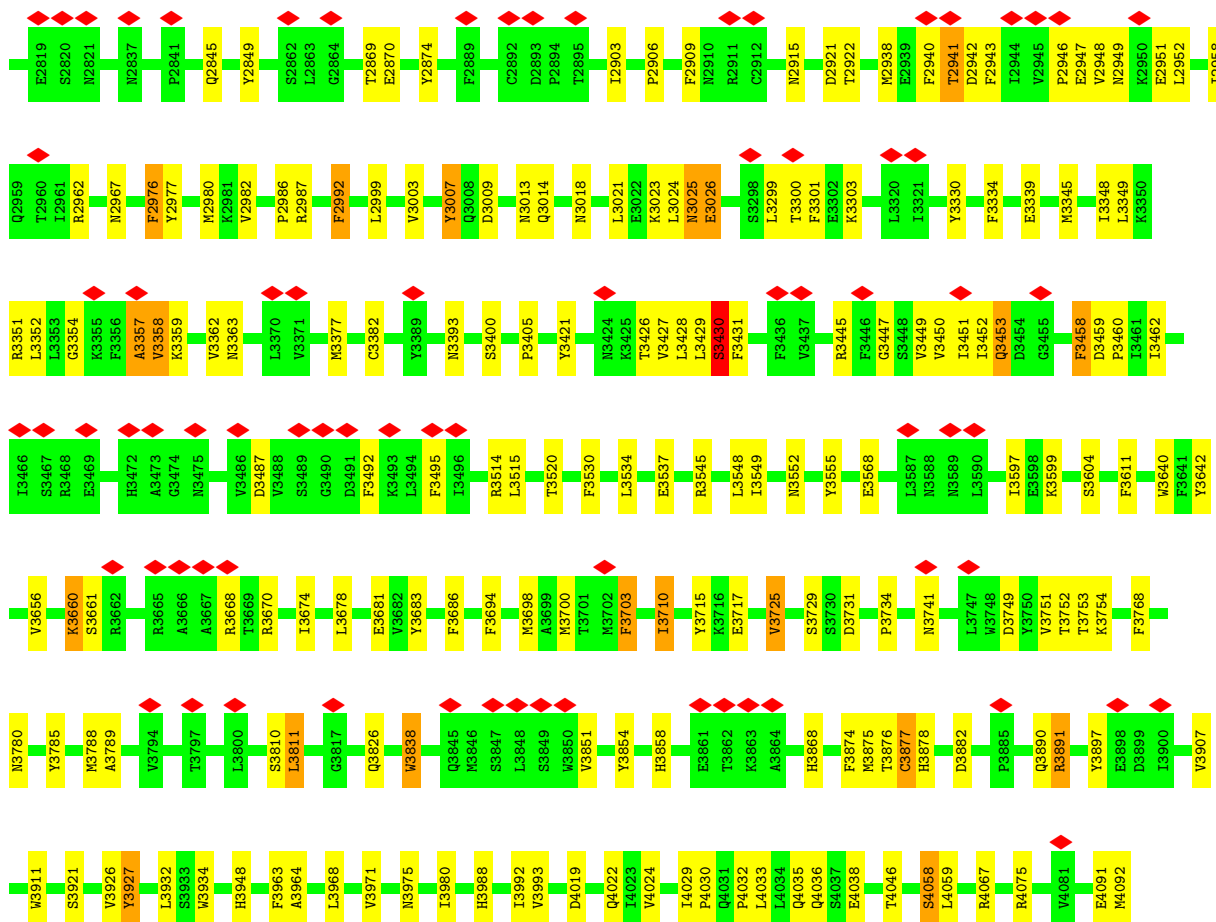
Mol	Chain	Residues	Atoms						AltConf	Trace
2	B	354	Total	C	H	N	O	S	0	0
			5683	1831	2821	499	516	16		
2	C	354	Total	C	H	N	O	S	0	0
			5683	1831	2821	499	516	16		

3 Residue-property plots

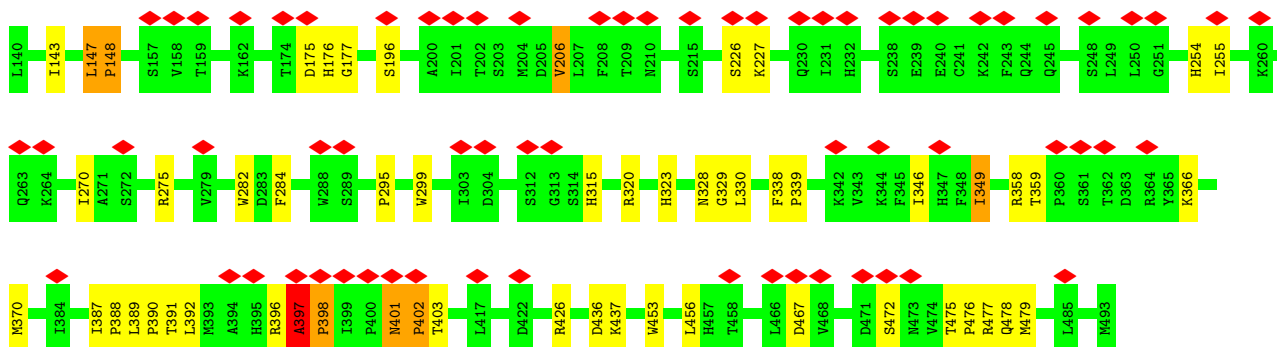
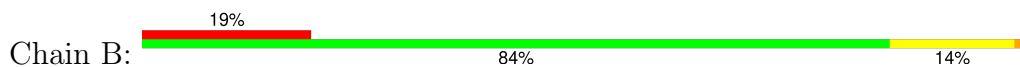
These plots are drawn for all protein, RNA, DNA and oligosaccharide chains in the entry. The first graphic for a chain summarises the proportions of the various outlier classes displayed in the second graphic. The second graphic shows the sequence view annotated by issues in geometry and atom inclusion in map density. Residues are color-coded according to the number of geometric quality criteria for which they contain at least one outlier: green = 0, yellow = 1, orange = 2 and red = 3 or more. A red diamond above a residue indicates a poor fit to the EM map for this residue (all-atom inclusion < 40%). Stretches of 2 or more consecutive residues without any outlier are shown as a green connector. Residues present in the sample, but not in the model, are shown in grey.

- Molecule 1: Dynein heavy chain, cytoplasmic

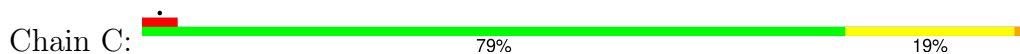


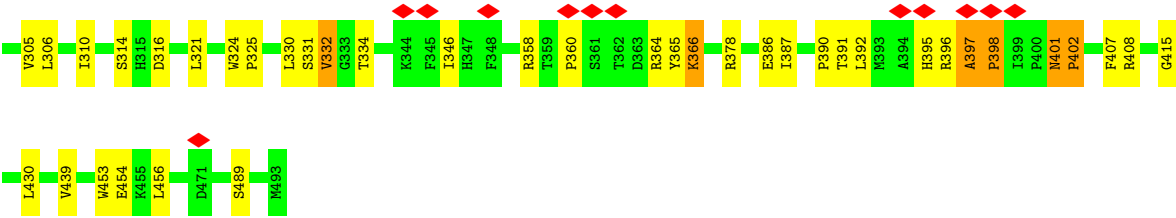


• Molecule 2: Nuclear distribution protein PAC1



• Molecule 2: Nuclear distribution protein PAC1





4 Experimental information

Property	Value	Source
EM reconstruction method	SINGLE PARTICLE	Depositor
Imposed symmetry	POINT, Not provided	
Number of particles used	27807	Depositor
Resolution determination method	FSC 0.143 CUT-OFF	Depositor
CTF correction method	PHASE FLIPPING AND AMPLITUDE CORRECTION	Depositor
Microscope	FEI TECNAI ARCTICA	Depositor
Voltage (kV)	200	Depositor
Electron dose ($e^-/\text{\AA}^2$)	50	Depositor
Minimum defocus (nm)	Not provided	
Maximum defocus (nm)	Not provided	
Magnification	36000	Depositor
Image detector	GATAN K2 SUMMIT (4k x 4k)	Depositor
Maximum map value	0.181	Depositor
Minimum map value	-0.048	Depositor
Average map value	0.001	Depositor
Map value standard deviation	0.014	Depositor
Recommended contour level	0.071	Depositor
Map size (Å)	307.2, 307.2, 307.2	wwPDB
Map dimensions	128, 128, 128	wwPDB
Map angles (°)	90.0, 90.0, 90.0	wwPDB
Pixel spacing (Å)	2.4, 2.4, 2.4	Depositor

5 Model quality

5.1 Standard geometry

The Z score for a bond length (or angle) is the number of standard deviations the observed value is removed from the expected value. A bond length (or angle) with $|Z| > 5$ is considered an outlier worth inspection. RMSZ is the root-mean-square of all Z scores of the bond lengths (or angles).

Mol	Chain	Bond lengths		Bond angles	
		RMSZ	# Z >5	RMSZ	# Z >5
1	A	0.82	0/19571	0.83	16/26457 (0.1%)
2	B	0.75	0/2943	0.90	3/4003 (0.1%)
2	C	0.77	1/2943 (0.0%)	0.92	5/4003 (0.1%)
All	All	0.81	1/25457 (0.0%)	0.85	24/34463 (0.1%)

Chiral center outliers are detected by calculating the chiral volume of a chiral center and verifying if the center is modelled as a planar moiety or with the opposite hand. A planarity outlier is detected by checking planarity of atoms in a peptide group, atoms in a mainchain group or atoms of a sidechain that are expected to be planar.

Mol	Chain	#Chirality outliers	#Planarity outliers
1	A	0	10

All (1) bond length outliers are listed below:

Mol	Chain	Res	Type	Atoms	Z	Observed(Å)	Ideal(Å)
2	C	386	GLU	CG-CD	-5.58	1.43	1.51

All (24) bond angle outliers are listed below:

Mol	Chain	Res	Type	Atoms	Z	Observed(°)	Ideal(°)
1	A	3927	TYR	CB-CG-CD1	-8.24	116.06	121.00
1	A	3891	ARG	NE-CZ-NH2	-7.75	116.43	120.30
1	A	2000	ARG	NE-CZ-NH2	-6.66	116.97	120.30
1	A	3007	TYR	CB-CG-CD2	-6.61	117.03	121.00
1	A	1917	ARG	NE-CZ-NH1	6.15	123.37	120.30
1	A	1771	TYR	CB-CG-CD1	-6.13	117.32	121.00
2	C	293	PHE	CB-CG-CD1	-6.05	116.56	120.80
1	A	2607	TYR	CB-CG-CD1	-5.89	117.47	121.00
1	A	3430	SER	N-CA-C	-5.70	95.61	111.00
1	A	3715	TYR	CB-CG-CD1	-5.68	117.59	121.00
2	B	320	ARG	NE-CZ-NH1	-5.41	117.59	120.30
2	B	397	ALA	C-N-CD	-5.35	108.83	120.60

Continued on next page...

Continued from previous page...

Mol	Chain	Res	Type	Atoms	Z	Observed(°)	Ideal(°)
2	C	358	ARG	NE-CZ-NH2	-5.26	117.67	120.30
2	C	180	TYR	CB-CG-CD2	-5.21	117.88	121.00
1	A	3785	TYR	CB-CG-CD2	-5.20	117.88	121.00
1	A	1620	PHE	CB-CG-CD1	-5.16	117.19	120.80
1	A	3568	GLU	N-CA-C	5.12	124.83	111.00
1	A	2574	TYR	CB-CG-CD2	-5.11	117.93	121.00
2	C	378	ARG	NE-CZ-NH2	-5.11	117.75	120.30
2	C	365	TYR	CB-CG-CD2	-5.09	117.94	121.00
2	B	147	LEU	C-N-CD	-5.09	109.40	120.60
1	A	2594	ARG	NE-CZ-NH2	-5.07	117.77	120.30
1	A	2874	TYR	CB-CG-CD1	-5.07	117.96	121.00
1	A	2387	ARG	NE-CZ-NH2	-5.05	117.78	120.30

There are no chirality outliers.

All (10) planarity outliers are listed below:

Mol	Chain	Res	Type	Group
1	A	2236	ALA	Mainchain,Peptide
1	A	2976	PHE	Mainchain,Peptide
1	A	3668	ARG	Mainchain,Peptide
1	A	3921	SER	Mainchain,Peptide
1	A	4058	SER	Mainchain,Peptide

5.2 Too-close contacts [i](#)

In the following table, the Non-H and H(model) columns list the number of non-hydrogen atoms and hydrogen atoms in the chain respectively. The H(added) column lists the number of hydrogen atoms added and optimized by MolProbity. The Clashes column lists the number of clashes within the asymmetric unit, whereas Symm-Clashes lists symmetry-related clashes.

Mol	Chain	Non-H	H(model)	H(added)	Clashes	Symm-Clashes
1	A	19180	19243	19240	239	0
2	B	2862	2821	2820	36	0
2	C	2862	2821	2820	50	0
All	All	24904	24885	24880	325	0

The all-atom clashscore is defined as the number of clashes found per 1000 atoms (including hydrogen atoms). The all-atom clashscore for this structure is 7.

All (325) close contacts within the same asymmetric unit are listed below, sorted by their clash magnitude.

Atom-1	Atom-2	Interatomic distance (Å)	Clash overlap (Å)
2:B:206:VAL:HG12	2:B:206:VAL:O	1.75	0.86
1:A:2159:ASP:OD1	1:A:2159:ASP:O	1.97	0.82
1:A:2903:ILE:HG22	1:A:2903:ILE:O	1.79	0.81
1:A:2952:LEU:O	1:A:2952:LEU:HD12	1.80	0.80
1:A:3725:VAL:HG12	1:A:3725:VAL:O	1.82	0.79
2:C:206:VAL:HG12	2:C:206:VAL:O	1.83	0.77
2:C:332:VAL:HG13	2:C:332:VAL:O	1.91	0.69
2:C:143:ILE:HG22	2:C:143:ILE:O	1.92	0.68
1:A:3710:ILE:HG22	1:A:3710:ILE:O	1.95	0.67
1:A:2302:PHE:O	1:A:2302:PHE:CD1	2.49	0.66
2:B:206:VAL:O	2:B:206:VAL:CG1	2.45	0.64
1:A:3725:VAL:O	1:A:3725:VAL:CG1	2.46	0.64
1:A:3975:ASN:OD1	1:A:3975:ASN:O	2.15	0.64
2:B:143:ILE:O	2:B:143:ILE:HG22	1.97	0.63
1:A:3670:ARG:HA	1:A:3670:ARG:NE	2.13	0.63
2:B:349:ILE:O	2:B:349:ILE:HG13	1.98	0.63
2:C:206:VAL:O	2:C:206:VAL:CG1	2.47	0.63
2:C:407:PHE:O	2:C:407:PHE:CD1	2.51	0.63
1:A:3927:TYR:OH	1:A:4029:ILE:O	2.14	0.63
1:A:3007:TYR:C	1:A:3007:TYR:CD2	2.71	0.62
2:C:366:LYS:O	2:C:366:LYS:HG2	1.99	0.62
1:A:4033:LEU:HD23	1:A:4033:LEU:O	2.00	0.62
2:C:408:ARG:HA	2:C:408:ARG:NE	2.15	0.61
1:A:1456:TYR:O	1:A:1456:TYR:CD1	2.53	0.61
1:A:3890:GLN:O	1:A:3890:GLN:HG2	2.00	0.61
1:A:3891:ARG:NE	1:A:3891:ARG:HA	2.16	0.61
1:A:1917:ARG:HB2	1:A:1917:ARG:CZ	2.30	0.60
1:A:2616:LEU:HD23	1:A:2616:LEU:O	2.01	0.60
1:A:3514:ARG:O	1:A:3514:ARG:HG3	2.02	0.60
1:A:3683:TYR:CD1	1:A:3683:TYR:C	2.74	0.60
1:A:2992:PHE:CD1	1:A:2992:PHE:C	2.75	0.60
2:B:370:MET:HE2	2:B:370:MET:HA	1.84	0.59
1:A:2390:ILE:C	1:A:2390:ILE:HD12	2.23	0.59
1:A:3459:ASP:HB3	1:A:3460:PRO:HD3	1.85	0.58
1:A:1529:ARG:HA	1:A:1529:ARG:NE	2.18	0.58
1:A:1910:GLU:N	1:A:1910:GLU:OE1	2.32	0.58
1:A:3980:ILE:HG23	1:A:3980:ILE:O	2.03	0.58
2:C:324:TRP:C	2:C:324:TRP:CD1	2.77	0.58
1:A:2903:ILE:O	1:A:2903:ILE:CG2	2.52	0.57
1:A:2735:HIS:H	1:A:2735:HIS:CD2	2.22	0.57
1:A:3330:TYR:N	1:A:3330:TYR:CD1	2.72	0.57
1:A:3430:SER:OG	1:A:3487:ASP:O	2.22	0.57

Continued on next page...

Continued from previous page...

Atom-1	Atom-2	Interatomic distance (Å)	Clash overlap (Å)
1:A:3751:VAL:HG12	1:A:3751:VAL:O	2.05	0.57
1:A:3330:TYR:N	1:A:3330:TYR:HD1	2.03	0.57
1:A:3642:TYR:O	1:A:3642:TYR:CD2	2.58	0.56
1:A:2952:LEU:HD12	1:A:2952:LEU:C	2.25	0.56
2:B:226:SER:OG	2:B:227:LYS:N	2.37	0.56
2:C:392:LEU:O	2:C:392:LEU:HG	2.05	0.56
1:A:1482:GLU:HB3	1:A:1508:THR:HA	1.88	0.56
1:A:2720:PHE:O	1:A:2720:PHE:CD1	2.59	0.56
1:A:3891:ARG:HA	1:A:3891:ARG:HE	1.71	0.55
1:A:2735:HIS:CD2	1:A:2735:HIS:N	2.74	0.55
1:A:3640:TRP:CD1	1:A:3640:TRP:C	2.79	0.55
1:A:1776:LEU:C	1:A:1776:LEU:HD23	2.27	0.54
2:C:231:ILE:HB	2:C:249:LEU:HB2	1.90	0.54
1:A:2473:LEU:HG	1:A:2473:LEU:O	2.06	0.54
1:A:3026:GLU:O	1:A:3026:GLU:HG3	2.08	0.53
1:A:3780:ASN:C	1:A:3780:ASN:OD1	2.46	0.53
1:A:2473:LEU:O	1:A:2474:LEU:HB2	2.09	0.53
1:A:3428:LEU:O	1:A:3428:LEU:HD23	2.09	0.53
1:A:2472:THR:O	1:A:2473:LEU:HB3	2.10	0.52
1:A:4029:ILE:N	1:A:4030:PRO:CD	2.73	0.52
2:B:387:ILE:N	2:B:388:PRO:CD	2.73	0.52
1:A:1463:LEU:HD21	1:A:1476:PHE:HB3	1.90	0.52
2:C:330:LEU:HG	2:C:330:LEU:O	2.08	0.52
1:A:4067:ARG:O	1:A:4067:ARG:HG2	2.08	0.52
1:A:3752:THR:OG1	1:A:3753:THR:N	2.42	0.52
1:A:3838:TRP:C	1:A:3838:TRP:CD1	2.83	0.52
2:B:284:PHE:C	2:B:284:PHE:CD2	2.83	0.52
1:A:3851:VAL:HA	1:A:3854:TYR:HB3	1.93	0.51
2:B:387:ILE:N	2:B:388:PRO:HD2	2.26	0.51
2:C:288:TRP:O	2:C:290:LEU:N	2.43	0.51
1:A:1666:THR:HG22	1:A:1666:THR:O	2.11	0.51
1:A:3968:LEU:HA	1:A:3971:VAL:HG22	1.93	0.51
1:A:2209:ARG:HA	1:A:2209:ARG:NE	2.26	0.51
1:A:3351:ARG:NE	1:A:3351:ARG:HA	2.26	0.51
2:B:330:LEU:O	2:B:330:LEU:HG	2.11	0.51
1:A:3330:TYR:HA	1:A:3334:PHE:HB3	1.91	0.51
1:A:2159:ASP:O	1:A:2159:ASP:CG	2.48	0.51
1:A:3393:ASN:O	1:A:3393:ASN:ND2	2.44	0.51
1:A:2941:THR:OG1	1:A:2942:ASP:N	2.43	0.50
2:C:284:PHE:C	2:C:284:PHE:CD2	2.85	0.50
1:A:1456:TYR:O	1:A:1456:TYR:HD1	1.94	0.50

Continued on next page...

Continued from previous page...

Atom-1	Atom-2	Interatomic distance (Å)	Clash overlap (Å)
1:A:3430:SER:OG	1:A:3431:PHE:N	2.42	0.50
1:A:3642:TYR:O	1:A:3642:TYR:HD2	1.94	0.50
2:C:275:ARG:O	2:C:275:ARG:HG2	2.12	0.50
1:A:1458:ILE:O	1:A:1462:ASN:HB2	2.12	0.50
1:A:2906:PRO:HA	1:A:2909:PHE:HB3	1.94	0.50
1:A:2999:LEU:O	1:A:3003:VAL:N	2.45	0.50
1:A:3026:GLU:O	1:A:3026:GLU:CG	2.60	0.50
2:B:453:TRP:HB3	2:B:456:LEU:HG	1.94	0.50
1:A:1553:LYS:O	1:A:1553:LYS:HD3	2.11	0.49
2:C:366:LYS:O	2:C:366:LYS:CG	2.60	0.49
1:A:1964:ASN:OD1	1:A:1964:ASN:N	2.45	0.49
1:A:2219:VAL:HG12	1:A:2219:VAL:O	2.12	0.49
1:A:3429:LEU:HB3	1:A:3447:GLY:HA2	1.94	0.49
1:A:2543:ARG:HA	1:A:2543:ARG:NE	2.27	0.49
1:A:4019:ASP:C	1:A:4019:ASP:OD1	2.48	0.49
1:A:2620:ARG:NE	1:A:2620:ARG:HA	2.27	0.49
1:A:2354:SER:OG	1:A:2355:ASP:N	2.45	0.49
1:A:3811:LEU:HG	1:A:3811:LEU:O	2.11	0.49
1:A:2720:PHE:CD1	1:A:2720:PHE:C	2.86	0.49
1:A:2940:PHE:HB2	1:A:2943:PHE:HB2	1.95	0.49
1:A:2178:LEU:HB3	1:A:2179:PRO:HD2	1.94	0.49
1:A:3299:LEU:HB3	1:A:3303:LYS:HB2	1.95	0.48
1:A:1899:ASN:O	1:A:1900:PRO:C	2.52	0.48
1:A:2763:ARG:HA	1:A:2767:THR:HB	1.96	0.48
2:C:209:THR:OG1	2:C:210:ASN:N	2.46	0.48
1:A:1721:LYS:O	1:A:1721:LYS:HG2	2.14	0.48
2:C:176:HIS:N	2:C:177:GLY:HA2	2.29	0.48
1:A:2384:GLU:HA	1:A:2384:GLU:OE1	2.14	0.48
1:A:3670:ARG:HA	1:A:3670:ARG:HE	1.76	0.48
2:C:331:SER:HA	2:C:391:THR:HA	1.95	0.48
1:A:1450:PHE:CD1	1:A:1450:PHE:N	2.81	0.48
1:A:3751:VAL:O	1:A:3751:VAL:CG1	2.62	0.48
1:A:3768:PHE:O	1:A:3768:PHE:CD1	2.67	0.48
1:A:3948:HIS:CD2	1:A:3948:HIS:O	2.67	0.48
2:C:324:TRP:CD1	2:C:324:TRP:O	2.67	0.48
1:A:1607:TRP:CD1	1:A:1607:TRP:C	2.84	0.48
1:A:2073:VAL:HG13	1:A:2197:ASP:HA	1.96	0.48
1:A:3838:TRP:HD1	1:A:3838:TRP:O	1.97	0.47
1:A:3964:ALA:HB2	1:A:3993:VAL:HG11	1.97	0.47
2:B:392:LEU:HG	2:B:392:LEU:O	2.13	0.47
2:C:407:PHE:O	2:C:407:PHE:CG	2.67	0.47

Continued on next page...

Continued from previous page...

Atom-1	Atom-2	Interatomic distance (Å)	Clash overlap (Å)
1:A:3975:ASN:O	1:A:3975:ASN:CG	2.53	0.47
1:A:1784:ASP:HB2	1:A:3963:PHE:CZ	2.50	0.47
1:A:3405:PRO:HD2	1:A:3495:PHE:CD1	2.49	0.47
1:A:1991:GLU:OE1	1:A:1991:GLU:N	2.48	0.47
1:A:3450:VAL:O	1:A:3450:VAL:HG13	2.14	0.47
1:A:3741:ASN:OD1	1:A:3741:ASN:C	2.52	0.47
1:A:3703:PHE:CD1	1:A:3703:PHE:C	2.88	0.47
1:A:4038:GLU:OE1	1:A:4038:GLU:N	2.42	0.47
2:C:254:HIS:HB3	2:C:275:ARG:HB3	1.95	0.47
1:A:2193:LEU:C	1:A:2193:LEU:HD13	2.34	0.47
1:A:3345:MET:O	1:A:3349:LEU:N	2.44	0.47
1:A:1683:LEU:HB2	1:A:1702:LEU:HD21	1.95	0.47
1:A:3009:ASP:O	1:A:3013:ASN:N	2.44	0.47
2:C:187:TYR:HB2	2:C:188:THR:HA	1.97	0.47
1:A:2003:LEU:N	1:A:2004:PRO:CD	2.77	0.46
1:A:3357:ALA:O	1:A:3358:VAL:HB	2.15	0.46
1:A:3788:MET:SD	1:A:3897:TYR:HB2	2.55	0.46
1:A:1553:LYS:HD3	1:A:1553:LYS:C	2.35	0.46
1:A:1754:TYR:CD1	1:A:1754:TYR:C	2.89	0.46
2:B:476:PRO:HA	2:B:479:MET:HE3	1.97	0.46
1:A:2314:ILE:HA	1:A:2317:LEU:HB3	1.98	0.46
1:A:3963:PHE:CD2	1:A:3963:PHE:C	2.87	0.46
2:C:364:ARG:HA	2:C:364:ARG:NE	2.31	0.46
1:A:3451:ILE:O	1:A:3453:GLN:N	2.48	0.46
1:A:1591:ASN:OD1	1:A:1591:ASN:C	2.54	0.46
1:A:3530:PHE:O	1:A:3534:LEU:N	2.49	0.46
1:A:3700:MET:SD	1:A:3700:MET:C	2.94	0.46
2:B:176:HIS:N	2:B:177:GLY:HA2	2.30	0.46
1:A:2190:PHE:C	1:A:2190:PHE:CD2	2.89	0.46
1:A:2536:ASN:OD1	1:A:2536:ASN:C	2.52	0.46
2:B:475:THR:HB	2:B:476:PRO:HD3	1.96	0.46
1:A:2616:LEU:O	1:A:2616:LEU:CD2	2.63	0.46
1:A:3348:ILE:O	1:A:3352:LEU:N	2.49	0.46
1:A:2616:LEU:HD23	1:A:2616:LEU:C	2.36	0.46
1:A:3428:LEU:HD23	1:A:3428:LEU:C	2.36	0.46
1:A:2615:TYR:CD2	1:A:2660:LEU:HD22	2.51	0.46
1:A:3789:ALA:HA	1:A:3878:HIS:HB3	1.98	0.45
1:A:3882:ASP:C	1:A:3882:ASP:OD1	2.53	0.45
1:A:3452:ILE:N	1:A:3495:PHE:O	2.46	0.45
2:C:401:ASN:HB3	2:C:402:PRO:HD2	1.97	0.45
2:B:397:ALA:CB	2:B:398:PRO:CD	2.94	0.45

Continued on next page...

Continued from previous page...

Atom-1	Atom-2	Interatomic distance (Å)	Clash overlap (Å)
2:C:242:LYS:HD3	2:C:242:LYS:N	2.32	0.45
2:C:283:ASP:O	2:C:287:GLY:N	2.46	0.45
1:A:4075:ARG:HA	1:A:4075:ARG:NE	2.32	0.45
2:B:254:HIS:CD2	2:B:275:ARG:HB3	2.51	0.45
1:A:2319:LYS:HD2	1:A:2342:ILE:HG13	1.99	0.45
1:A:3674:ILE:O	1:A:3678:LEU:N	2.49	0.45
1:A:1534:PHE:CD1	1:A:1534:PHE:N	2.85	0.45
1:A:3548:LEU:HB3	1:A:3604:SER:HB2	1.97	0.45
2:C:194:LEU:HD21	2:C:234:PHE:CE2	2.52	0.45
2:B:338:PHE:HB3	2:B:339:PRO:HD2	1.99	0.45
2:B:436:ASP:O	2:B:437:LYS:HB2	2.15	0.45
1:A:2982:VAL:HG12	1:A:2982:VAL:O	2.17	0.44
2:C:147:LEU:C	2:C:147:LEU:HD12	2.38	0.44
2:C:324:TRP:HB3	2:C:325:PRO:HD3	1.99	0.44
1:A:2977:TYR:CZ	1:A:2987:ARG:HA	2.52	0.44
1:A:3686:PHE:N	1:A:3686:PHE:CD1	2.86	0.44
1:A:4033:LEU:HD23	1:A:4033:LEU:C	2.37	0.44
2:C:268:VAL:HG12	2:C:268:VAL:O	2.17	0.44
2:C:397:ALA:CB	2:C:398:PRO:CD	2.95	0.44
1:A:2977:TYR:O	1:A:2977:TYR:CD1	2.70	0.44
1:A:1726:LEU:O	1:A:1730:LYS:HB3	2.17	0.44
1:A:1918:GLU:OE1	1:A:1918:GLU:N	2.51	0.44
1:A:2250:LYS:HE3	1:A:2250:LYS:HB3	1.74	0.44
1:A:2958:ILE:HD11	1:A:2967:ASN:HB2	2.00	0.44
1:A:3300:THR:OG1	1:A:3301:PHE:N	2.47	0.44
1:A:1460:GLY:HA2	1:A:1487:THR:HG21	2.00	0.44
1:A:3640:TRP:CD1	1:A:3640:TRP:O	2.71	0.44
1:A:3838:TRP:CD1	1:A:3838:TRP:O	2.70	0.44
2:B:426:ARG:HA	2:B:426:ARG:HD2	1.59	0.44
1:A:1877:SER:OG	1:A:1878:HIS:N	2.50	0.44
1:A:2319:LYS:HD3	1:A:2345:TYR:HB3	2.00	0.44
1:A:2724:CYS:SG	1:A:2729:GLU:HG2	2.58	0.44
1:A:3382:CYS:SG	1:A:3421:TYR:HA	2.58	0.44
1:A:2196:THR:OG1	1:A:2197:ASP:N	2.51	0.44
1:A:2607:TYR:HB3	1:A:2615:TYR:CD2	2.52	0.44
1:A:2797:MET:SD	1:A:2797:MET:C	2.97	0.44
2:B:391:THR:O	2:B:403:THR:HB	2.18	0.44
1:A:3555:TYR:CG	1:A:3597:ILE:HA	2.53	0.43
1:A:3874:PHE:N	1:A:3874:PHE:CD1	2.86	0.43
1:A:3988:HIS:O	1:A:3992:ILE:HB	2.18	0.43
1:A:3014:GLN:O	1:A:3018:ASN:N	2.50	0.43

Continued on next page...

Continued from previous page...

Atom-1	Atom-2	Interatomic distance (Å)	Clash overlap (Å)
1:A:3611:PHE:N	1:A:3611:PHE:CD1	2.86	0.43
2:B:467:ASP:HB2	2:B:477:ARG:HA	2.00	0.43
2:C:314:SER:OG	2:C:316:ASP:OD1	2.36	0.43
1:A:2915:ASN:OD1	1:A:2915:ASN:C	2.56	0.43
1:A:3749:ASP:C	1:A:3749:ASP:OD1	2.54	0.43
2:B:175:ASP:C	2:B:175:ASP:OD1	2.56	0.43
1:A:2219:VAL:O	1:A:2219:VAL:CG1	2.67	0.43
1:A:3660:LYS:HG2	1:A:3661:SER:N	2.34	0.43
1:A:1718:CYS:O	1:A:1720:THR:N	2.51	0.43
1:A:2114:LEU:O	1:A:2130:PHE:N	2.51	0.43
1:A:2386:MET:SD	1:A:2386:MET:C	2.97	0.43
1:A:2938:MET:HB2	1:A:2962:ARG:HG2	1.99	0.43
1:A:3024:LEU:O	1:A:3025:ASN:C	2.55	0.43
1:A:3428:LEU:O	1:A:3445:ARG:HA	2.19	0.43
1:A:3428:LEU:HG	1:A:3492:PHE:CD1	2.54	0.43
2:B:478:GLN:HG2	2:B:478:GLN:O	2.19	0.43
1:A:1705:TYR:N	1:A:1705:TYR:CD1	2.84	0.43
1:A:2171:ASP:O	1:A:2172:ASP:HB3	2.19	0.43
2:B:401:ASN:CB	2:B:402:PRO:CD	2.97	0.43
1:A:3514:ARG:NH1	1:A:3515:LEU:O	2.52	0.42
2:C:152:ILE:HB	2:C:489:SER:HB3	2.01	0.42
1:A:2517:LYS:O	1:A:2521:ASN:N	2.50	0.42
1:A:2845:GLN:HA	1:A:2849:TYR:HB2	2.01	0.42
1:A:3377:MET:SD	1:A:3549:ILE:HB	2.60	0.42
1:A:3426:THR:O	1:A:3449:VAL:N	2.48	0.42
2:C:454:GLU:OE1	2:C:454:GLU:N	2.39	0.42
1:A:2735:HIS:H	1:A:2735:HIS:HD2	1.65	0.42
1:A:3545:ARG:HD2	1:A:3545:ARG:O	2.18	0.42
2:C:334:THR:O	2:C:334:THR:HG22	2.18	0.42
1:A:2319:LYS:HD2	1:A:2342:ILE:CG1	2.49	0.42
2:B:358:ARG:HA	2:B:359:THR:C	2.39	0.42
2:C:270:ILE:HB	2:C:282:TRP:HB2	2.02	0.42
2:C:439:VAL:HG21	2:C:456:LEU:HD11	2.01	0.42
1:A:1536:ARG:HB3	1:A:1565:MET:SD	2.59	0.42
1:A:2921:ASP:OD1	1:A:2922:THR:N	2.49	0.42
1:A:2295:ILE:O	1:A:2299:ARG:N	2.53	0.42
1:A:3656:VAL:HG22	1:A:3681:GLU:HB3	2.01	0.42
1:A:3854:TYR:O	1:A:3858:HIS:N	2.52	0.42
1:A:3876:THR:O	1:A:3877:CYS:HB2	2.19	0.42
2:B:299:TRP:CD1	2:B:299:TRP:N	2.84	0.42
1:A:2087:VAL:O	1:A:2091:MET:N	2.52	0.42

Continued on next page...

Continued from previous page...

Atom-1	Atom-2	Interatomic distance (Å)	Clash overlap (Å)
2:B:323:HIS:HB2	2:B:328:ASN:O	2.20	0.42
2:C:262:TRP:CE3	2:C:305:VAL:HG13	2.54	0.42
1:A:2302:PHE:CD1	1:A:2302:PHE:C	2.91	0.42
1:A:2343:ASN:HB3	1:A:2351:GLN:HB2	2.01	0.42
1:A:3911:TRP:CH2	1:A:4046:THR:HB	2.55	0.42
1:A:4024:VAL:HG12	1:A:4024:VAL:O	2.19	0.42
2:B:329:GLY:HA3	2:B:392:LEU:HB3	2.02	0.42
2:B:346:ILE:O	2:B:346:ILE:HG23	2.19	0.42
1:A:2214:TRP:CD1	1:A:2214:TRP:C	2.93	0.42
1:A:1604:ALA:HA	1:A:1607:TRP:HB3	2.01	0.41
1:A:2419:PRO:HA	1:A:2420:PRO:HD3	1.85	0.41
1:A:3426:THR:OG1	1:A:3447:GLY:HA3	2.20	0.41
2:C:324:TRP:O	2:C:324:TRP:HD1	2.03	0.41
1:A:2327:ALA:HB1	1:A:2335:GLN:HG3	2.02	0.41
2:C:176:HIS:N	2:C:176:HIS:CD2	2.85	0.41
1:A:1971:ARG:HD2	1:A:1971:ARG:C	2.41	0.41
1:A:2117:SER:O	1:A:2126:ARG:N	2.52	0.41
1:A:4058:SER:N	1:A:4059:LEU:HA	2.35	0.41
2:C:346:ILE:O	2:C:346:ILE:HG23	2.21	0.41
1:A:1467:ASN:C	1:A:1467:ASN:OD1	2.58	0.41
1:A:1470:PRO:HA	1:A:1473:THR:HB	2.02	0.41
1:A:2249:LEU:HD22	1:A:2314:ILE:HD13	2.02	0.41
1:A:2947:GLU:HB3	1:A:3354:GLY:HA3	2.01	0.41
1:A:3741:ASN:OD1	1:A:3741:ASN:O	2.38	0.41
1:A:2091:MET:SD	1:A:2151:TRP:CD1	3.14	0.41
1:A:3363:ASN:C	1:A:3363:ASN:OD1	2.59	0.41
1:A:3907:VAL:HG22	1:A:3934:TRP:HA	2.02	0.41
1:A:3926:VAL:HG11	1:A:4036:GLN:O	2.21	0.41
1:A:1458:ILE:HD11	1:A:1549:ILE:HB	2.03	0.41
1:A:3932:LEU:HD13	1:A:3964:ALA:HB1	2.03	0.41
2:C:210:ASN:HB2	2:C:263:GLN:HB2	2.01	0.41
1:A:1937:MET:HE3	1:A:1937:MET:HB2	1.94	0.41
1:A:2653:TRP:CZ2	1:A:2693:SER:HA	2.55	0.41
1:A:2947:GLU:N	1:A:3357:ALA:O	2.47	0.41
1:A:3552:ASN:OD1	1:A:3604:SER:OG	2.34	0.41
2:B:366:LYS:HD2	2:B:388:PRO:HB3	2.02	0.41
1:A:2229:LEU:O	1:A:2233:SER:N	2.52	0.41
1:A:1463:LEU:HD23	1:A:1463:LEU:HA	1.60	0.41
1:A:1754:TYR:CD1	1:A:1754:TYR:O	2.74	0.41
1:A:2068:GLN:HA	1:A:2191:ARG:HD2	2.03	0.41
1:A:2473:LEU:O	1:A:2474:LEU:CB	2.68	0.41

Continued on next page...

Continued from previous page...

Atom-1	Atom-2	Interatomic distance (Å)	Clash overlap (Å)
1:A:2720:PHE:O	1:A:2720:PHE:HD1	2.01	0.41
1:A:3023:LYS:O	1:A:3023:LYS:HG2	2.21	0.41
1:A:3694:PHE:O	1:A:3698:MET:HG3	2.21	0.41
1:A:3854:TYR:O	1:A:3854:TYR:CG	2.70	0.41
1:A:3868:HIS:O	1:A:3868:HIS:CD2	2.74	0.41
1:A:3875:MET:SD	1:A:3875:MET:N	2.94	0.41
1:A:3891:ARG:NE	1:A:3891:ARG:CA	2.84	0.41
2:B:147:LEU:O	2:B:148:PRO:C	2.59	0.41
2:C:310:ILE:O	2:C:321:LEU:HA	2.20	0.41
1:A:1449:GLN:O	1:A:1449:GLN:NE2	2.54	0.41
1:A:1458:ILE:O	1:A:1458:ILE:HG22	2.17	0.41
1:A:1952:PHE:CE2	1:A:2021:ILE:HB	2.55	0.41
2:B:401:ASN:HB3	2:B:402:PRO:CD	2.51	0.41
2:C:306:LEU:HD12	2:C:306:LEU:N	2.36	0.41
2:C:310:ILE:O	2:C:310:ILE:HG22	2.20	0.41
2:C:331:SER:OG	2:C:387:ILE:HB	2.21	0.41
1:A:2537:PRO:HA	1:A:2538:PRO:HD2	1.95	0.40
1:A:2588:TYR:HB3	1:A:2592:PHE:HB2	2.03	0.40
1:A:3458:PHE:O	1:A:3462:ILE:N	2.51	0.40
2:C:430:LEU:C	2:C:430:LEU:HD23	2.42	0.40
1:A:1535:PRO:HB2	1:A:1841:ILE:HG13	2.03	0.40
2:C:270:ILE:O	2:C:281:ILE:HA	2.21	0.40
1:A:2697:SER:HB3	1:A:2700:LEU:HB2	2.03	0.40
2:B:270:ILE:HB	2:B:282:TRP:HB2	2.03	0.40
2:B:315:HIS:HA	2:B:339:PRO:HB3	2.04	0.40
2:C:453:TRP:HB3	2:C:456:LEU:HG	2.03	0.40
1:A:1620:PHE:HB2	1:A:1743:ASP:O	2.21	0.40
1:A:2027:THR:HA	1:A:2028:PRO:HD3	1.94	0.40
1:A:2208:THR:OG1	1:A:2209:ARG:NH1	2.54	0.40
1:A:2390:ILE:HD12	1:A:2390:ILE:O	2.20	0.40
2:B:147:LEU:HG	2:B:148:PRO:HD2	2.03	0.40
2:C:242:LYS:HD3	2:C:242:LYS:H	1.85	0.40
1:A:1669:PHE:HB3	1:A:1716:LYS:HA	2.04	0.40
1:A:2352:GLU:H	1:A:2352:GLU:CD	2.24	0.40
1:A:2589:THR:HG22	1:A:2590:GLU:N	2.37	0.40
1:A:3021:LEU:HA	1:A:3024:LEU:HG	2.04	0.40
1:A:4091:GLU:O	1:A:4092:MET:HB2	2.21	0.40

There are no symmetry-related clashes.

5.3 Torsion angles

5.3.1 Protein backbone

In the following table, the Percentiles column shows the percent Ramachandran outliers of the chain as a percentile score with respect to all PDB entries followed by that with respect to all EM entries.

The Analysed column shows the number of residues for which the backbone conformation was analysed, and the total number of residues.

Mol	Chain	Analysed	Favoured	Allowed	Outliers	Percentiles	
1	A	2374/2376 (100%)	2113 (89%)	200 (8%)	61 (3%)	4	26
2	B	352/354 (99%)	291 (83%)	47 (13%)	14 (4%)	2	18
2	C	352/354 (99%)	305 (87%)	30 (8%)	17 (5%)	2	16
All	All	3078/3084 (100%)	2709 (88%)	277 (9%)	92 (3%)	5	23

All (92) Ramachandran outliers are listed below:

Mol	Chain	Res	Type
1	A	1600	ASP
1	A	1719	SER
1	A	1766	PRO
1	A	2354	SER
1	A	2517	LYS
1	A	2589	THR
1	A	2702	LEU
1	A	2941	THR
1	A	2946	PRO
1	A	2949	ASN
1	A	2986	PRO
1	A	3025	ASN
1	A	3358	VAL
1	A	3362	VAL
1	A	3400	SER
1	A	3453	GLN
1	A	3599	LYS
1	A	3717	GLU
1	A	3734	PRO
1	A	3754	LYS
1	A	3810	SER
2	B	148	PRO
2	B	196	SER
2	B	295	PRO

Continued on next page...

Continued from previous page...

Mol	Chain	Res	Type
2	B	397	ALA
2	B	398	PRO
2	B	401	ASN
2	B	402	PRO
2	C	148	PRO
2	C	206	VAL
2	C	289	SER
2	C	295	PRO
2	C	397	ALA
2	C	398	PRO
2	C	401	ASN
2	C	402	PRO
1	A	1601	SER
1	A	1880	THR
1	A	1902	TYR
1	A	1920	SER
1	A	2140	ASP
1	A	2160	PRO
1	A	2172	ASP
1	A	2473	LEU
1	A	2474	LEU
1	A	2870	GLU
1	A	2948	VAL
1	A	2980	MET
1	A	3339	GLU
1	A	3357	ALA
1	A	3427	VAL
1	A	3430	SER
1	A	3458	PHE
1	A	3537	GLU
1	A	3729	SER
1	A	3731	ASP
1	A	3811	LEU
1	A	3877	CYS
2	B	206	VAL
2	B	390	PRO
1	A	1668	GLU
1	A	1877	SER
1	A	1900	PRO
1	A	3026	GLU
1	A	3359	LYS
1	A	3520	THR

Continued on next page...

Continued from previous page...

Mol	Chain	Res	Type
1	A	3725	VAL
1	A	3826	GLN
1	A	4032	PRO
2	B	255	ILE
2	B	349	ILE
2	B	472	SER
2	C	196	SER
2	C	255	ILE
2	C	366	LYS
2	C	395	HIS
1	A	2951	GLU
2	B	396	ARG
2	C	396	ARG
1	A	2869	THR
1	A	3660	LYS
1	A	4022	GLN
2	C	390	PRO
1	A	1603	GLN
1	A	4035	GLN
2	B	389	LEU
2	C	415	GLY
1	A	1990	GLY
1	A	3710	ILE
1	A	1924	PRO
2	C	332	VAL
2	C	360	PRO

5.3.2 Protein sidechains ⓘ

In the following table, the Percentiles column shows the percent sidechain outliers of the chain as a percentile score with respect to all PDB entries followed by that with respect to all EM entries.

The Analysed column shows the number of residues for which the sidechain conformation was analysed, and the total number of residues.

Mol	Chain	Analysed	Rotameric	Outliers	Percentiles	
1	A	2162/2162 (100%)	2155 (100%)	7 (0%)	91	92
2	B	327/327 (100%)	327 (100%)	0	100	100
2	C	327/327 (100%)	327 (100%)	0	100	100
All	All	2816/2816 (100%)	2809 (100%)	7 (0%)	91	94

All (7) residues with a non-rotameric sidechain are listed below:

Mol	Chain	Res	Type
1	A	1534	PHE
1	A	2386	MET
1	A	2576	LYS
1	A	2976	PHE
1	A	2992	PHE
1	A	3703	PHE
1	A	3838	TRP

Sometimes sidechains can be flipped to improve hydrogen bonding and reduce clashes. All (7) such sidechains are listed below:

Mol	Chain	Res	Type
1	A	2735	HIS
1	A	2959	GLN
1	A	3008	GLN
1	A	3011	GLN
2	B	230	GLN
2	C	230	GLN
2	C	245	GLN

5.3.3 RNA ⓘ

There are no RNA molecules in this entry.

5.4 Non-standard residues in protein, DNA, RNA chains ⓘ

There are no non-standard protein/DNA/RNA residues in this entry.

5.5 Carbohydrates ⓘ

There are no oligosaccharides in this entry.

5.6 Ligand geometry ⓘ

There are no ligands in this entry.

5.7 Other polymers [i](#)

There are no such residues in this entry.

5.8 Polymer linkage issues [i](#)

There are no chain breaks in this entry.

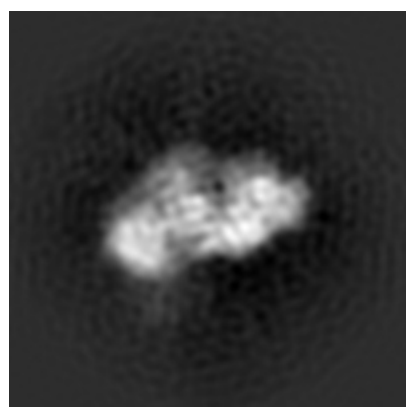
6 Map visualisation [i](#)

This section contains visualisations of the EMDB entry EMD-8706. These allow visual inspection of the internal detail of the map and identification of artifacts.

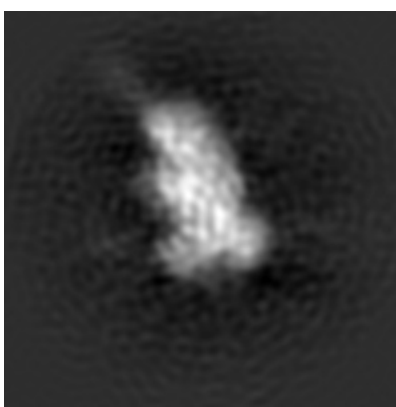
No raw map or half-maps were deposited for this entry and therefore no images, graphs, etc. pertaining to the raw map can be shown.

6.1 Orthogonal projections [i](#)

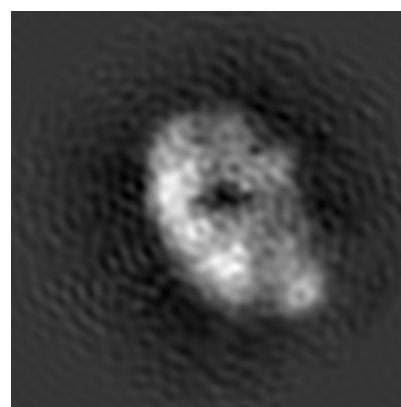
6.1.1 Primary map



X



Y

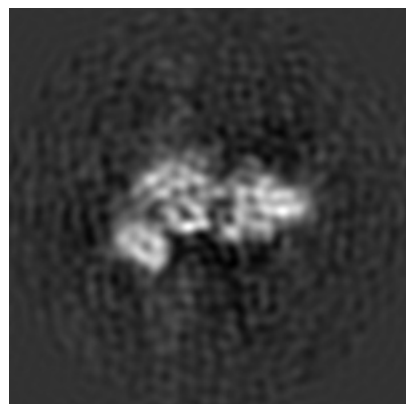


Z

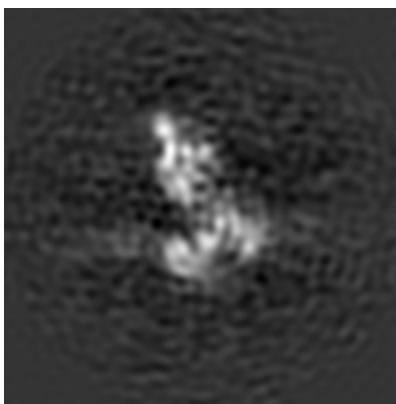
The images above show the map projected in three orthogonal directions.

6.2 Central slices [i](#)

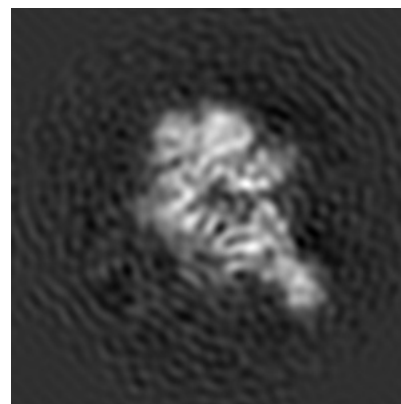
6.2.1 Primary map



X Index: 64



Y Index: 64

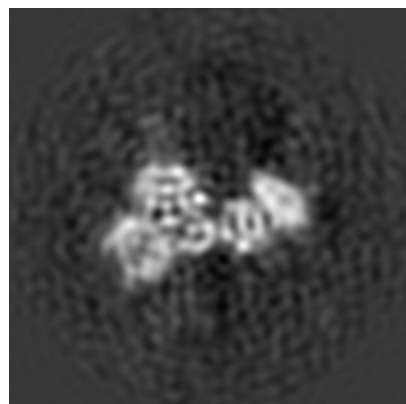


Z Index: 64

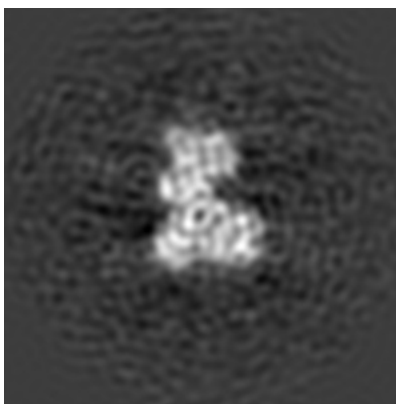
The images above show central slices of the map in three orthogonal directions.

6.3 Largest variance slices [i](#)

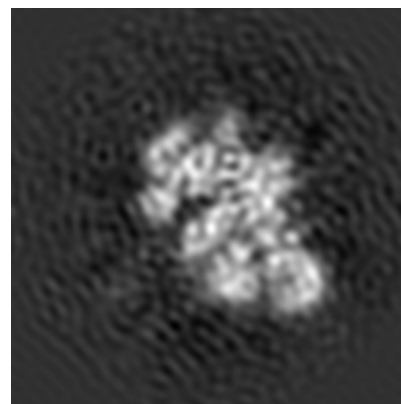
6.3.1 Primary map



X Index: 70



Y Index: 74

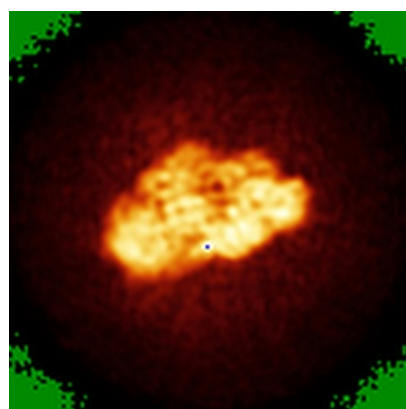


Z Index: 58

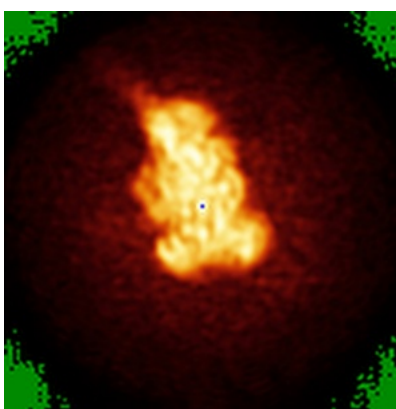
The images above show the largest variance slices of the map in three orthogonal directions.

6.4 Orthogonal standard-deviation projections (False-color) [i](#)

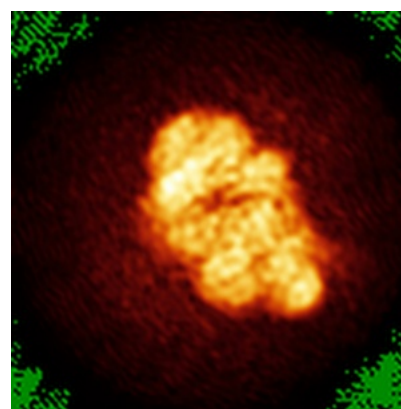
6.4.1 Primary map



X



Y

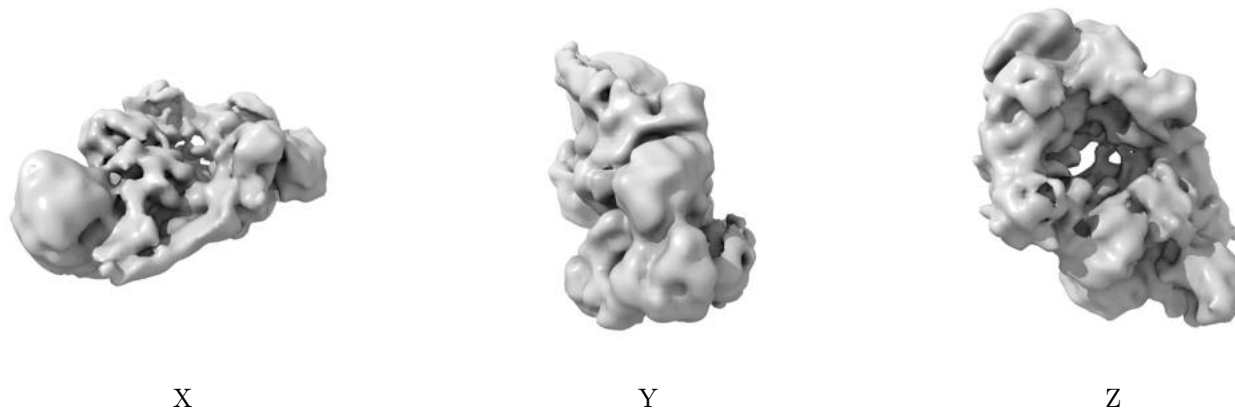


Z

The images above show the map standard deviation projections with false color in three orthogonal directions. Minimum values are shown in green, max in blue, and dark to light orange shades represent small to large values respectively.

6.5 Orthogonal surface views [i](#)

6.5.1 Primary map



The images above show the 3D surface view of the map at the recommended contour level 0.071. These images, in conjunction with the slice images, may facilitate assessment of whether an appropriate contour level has been provided.

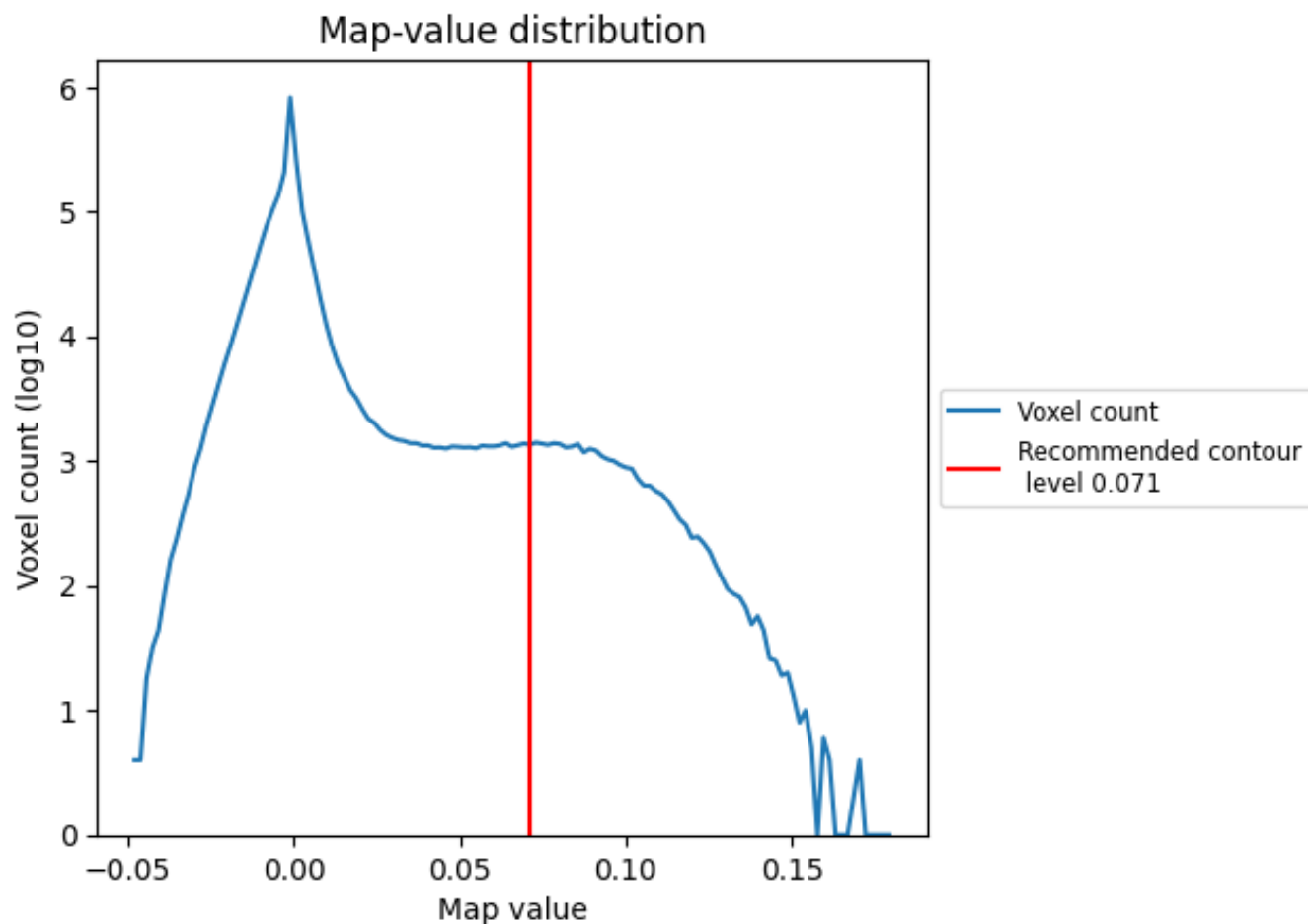
6.6 Mask visualisation [i](#)

This section was not generated. No masks/segmentation were deposited.

7 Map analysis [i](#)

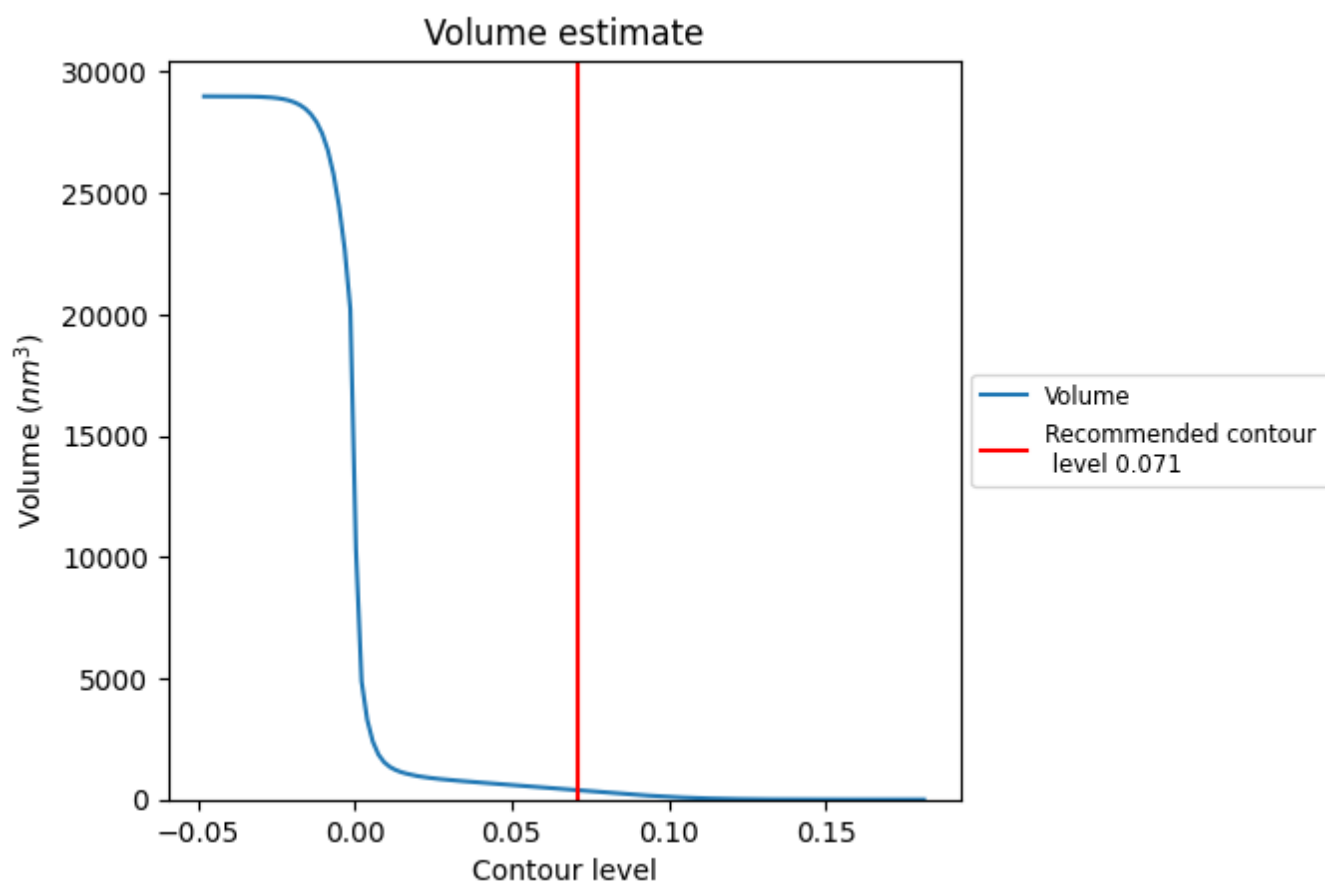
This section contains the results of statistical analysis of the map.

7.1 Map-value distribution [i](#)



The map-value distribution is plotted in 128 intervals along the x-axis. The y-axis is logarithmic. A spike in this graph at zero usually indicates that the volume has been masked.

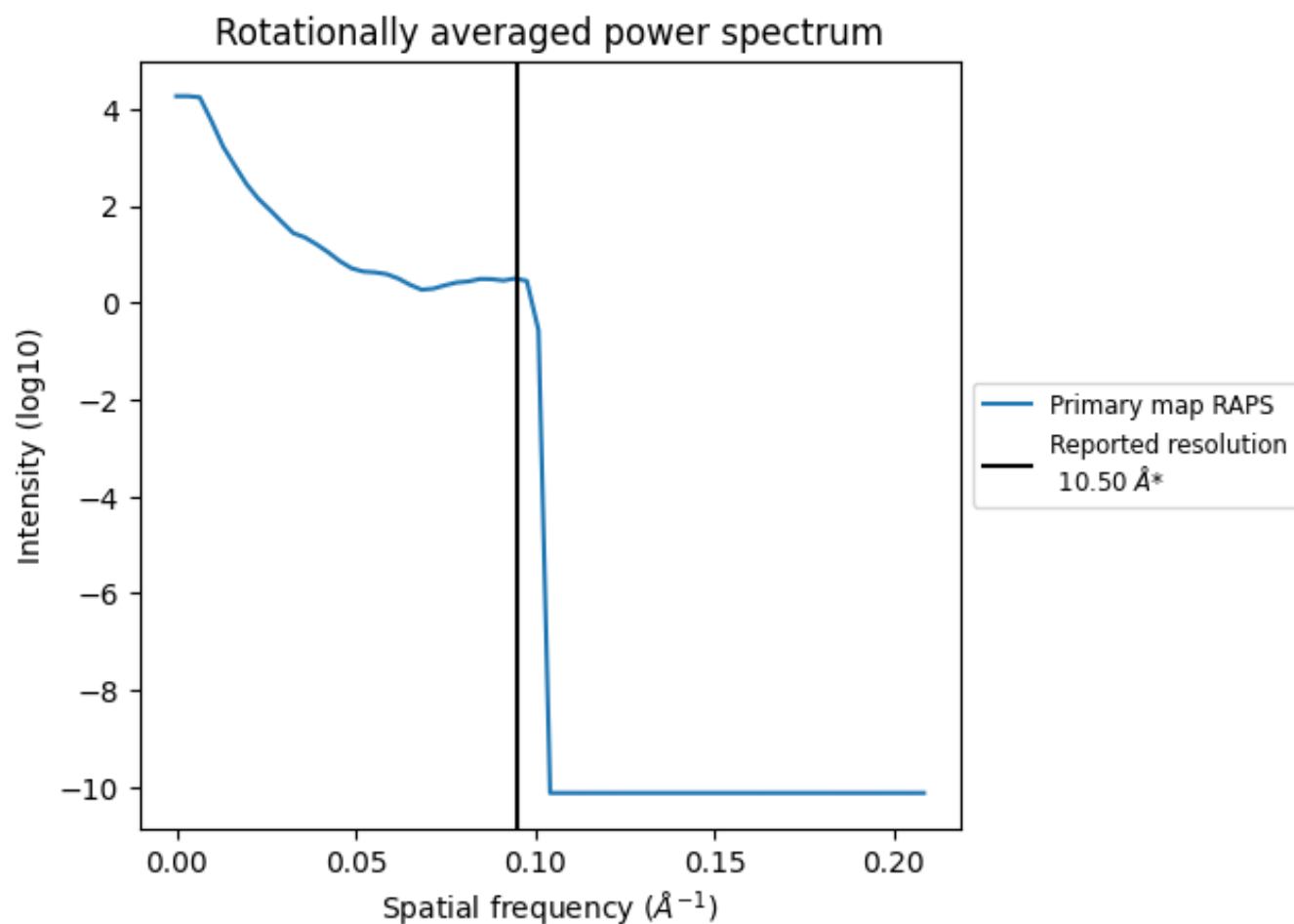
7.2 Volume estimate [i](#)



The volume at the recommended contour level is 389 nm³; this corresponds to an approximate mass of 352 kDa.

The volume estimate graph shows how the enclosed volume varies with the contour level. The recommended contour level is shown as a vertical line and the intersection between the line and the curve gives the volume of the enclosed surface at the given level.

7.3 Rotationally averaged power spectrum ⓘ



*Reported resolution corresponds to spatial frequency of 0.095 Å⁻¹

8 Fourier-Shell correlation

This section was not generated. No FSC curve or half-maps provided.

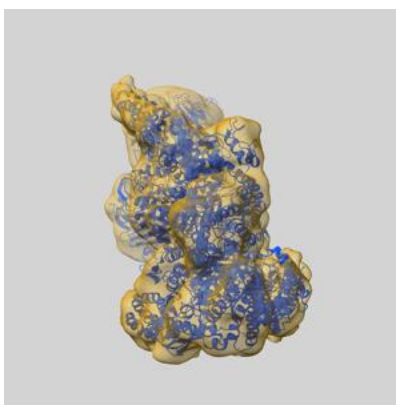
9 Map-model fit [i](#)

This section contains information regarding the fit between EMDB map EMD-8706 and PDB model 5VLJ. Per-residue inclusion information can be found in section [3](#) on page [4](#).

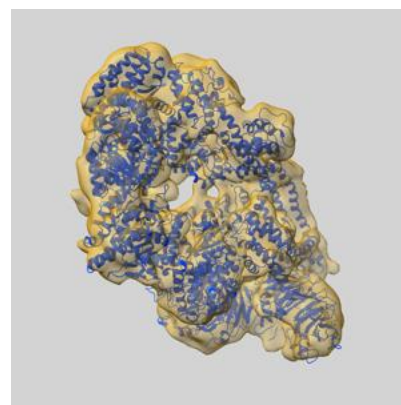
9.1 Map-model overlay [i](#)



X



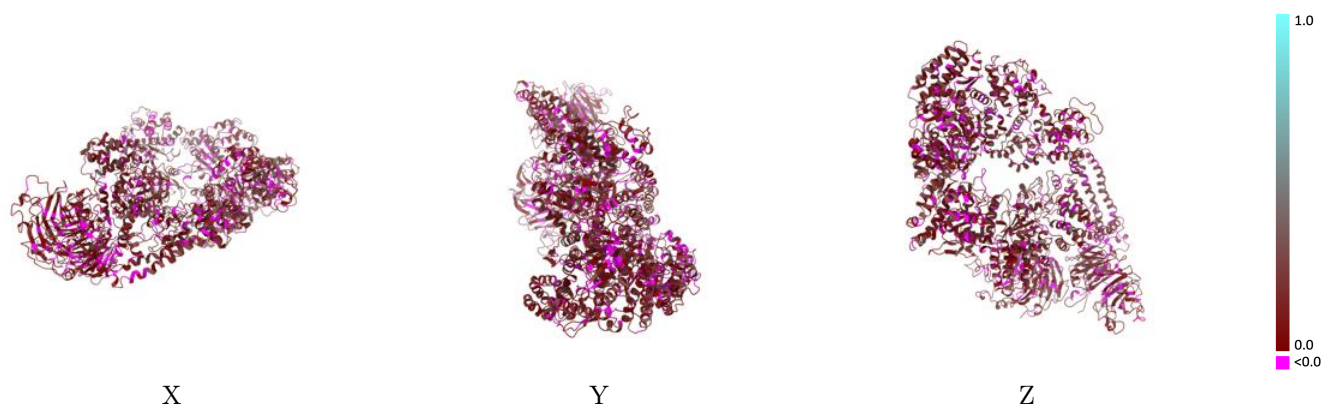
Y



Z

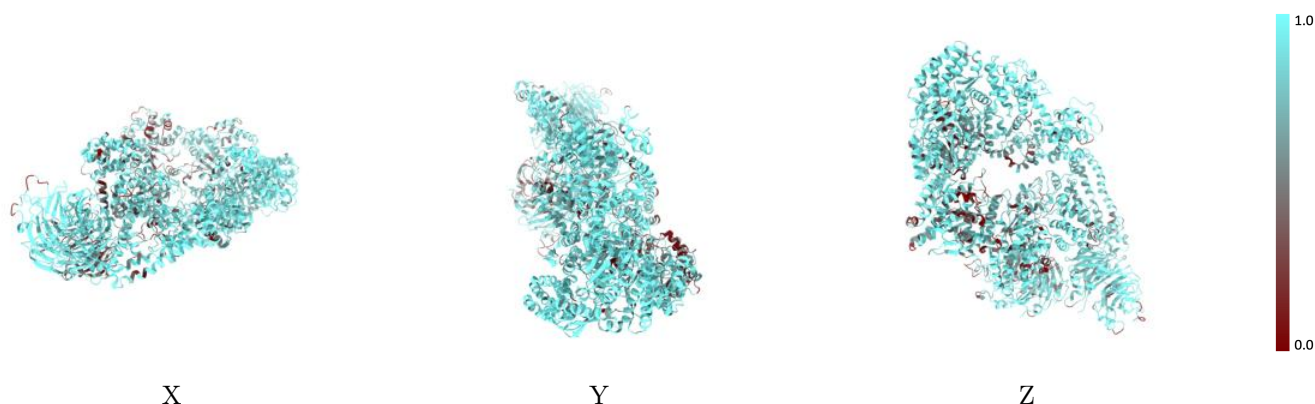
The images above show the 3D surface view of the map at the recommended contour level 0.071 at 50% transparency in yellow overlaid with a ribbon representation of the model coloured in blue. These images allow for the visual assessment of the quality of fit between the atomic model and the map.

9.2 Q-score mapped to coordinate model [i](#)



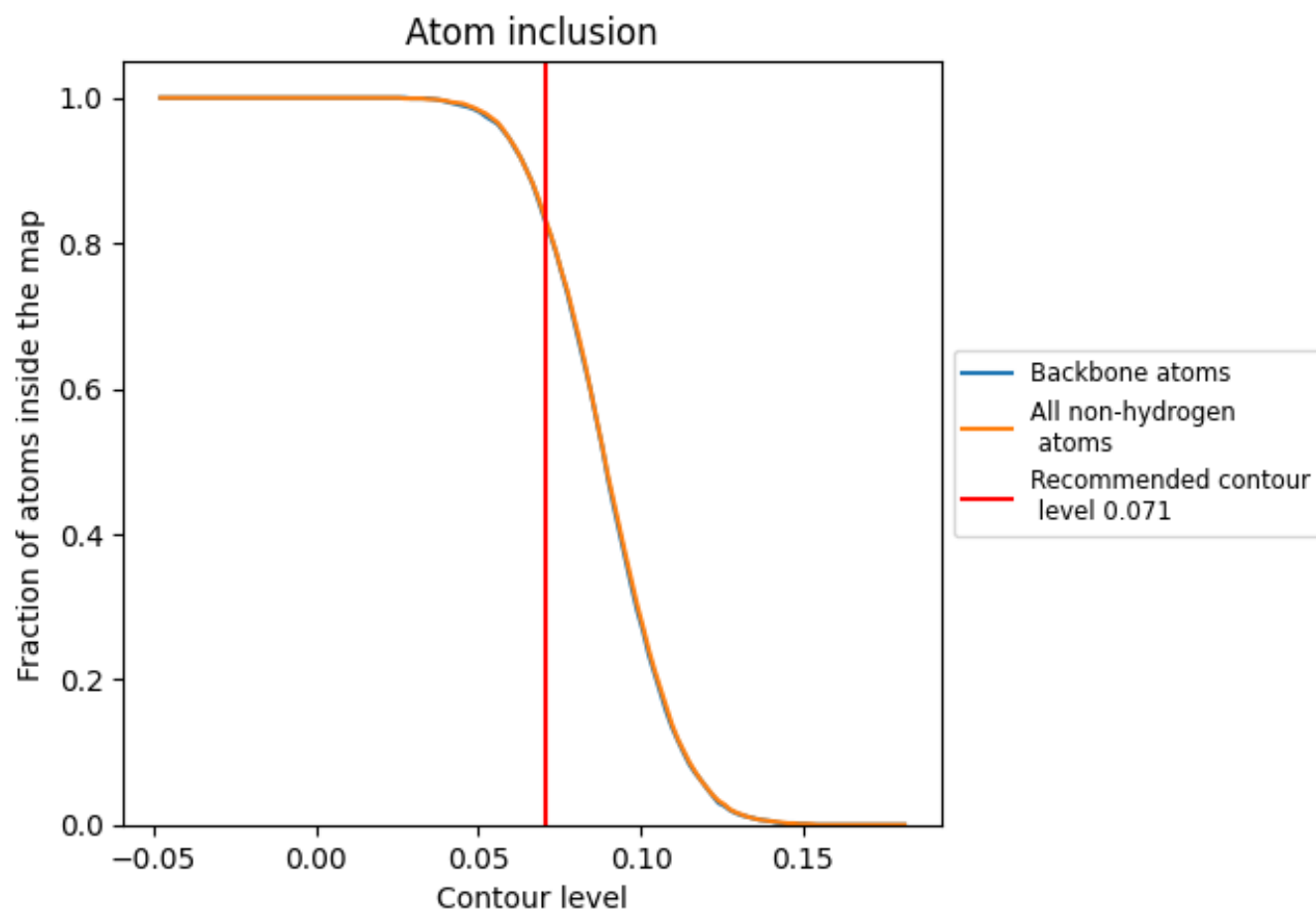
The images above show the model with each residue coloured according to its Q-score. This shows their resolvability in the map with higher Q-score values reflecting better resolvability. Please note: Q-score is calculating the resolvability of atoms, and thus high values are only expected at resolutions at which atoms can be resolved. Low Q-score values may therefore be expected for many entries.

9.3 Atom inclusion mapped to coordinate model [i](#)



The images above show the model with each residue coloured according to its atom inclusion. This shows to what extent they are inside the map at the recommended contour level (0.071).

9.4 Atom inclusion [i](#)



At the recommended contour level, 82% of all backbone atoms, 83% of all non-hydrogen atoms, are inside the map.

9.5 Map-model fit summary ⓘ

The table lists the average atom inclusion at the recommended contour level (0.071) and Q-score for the entire model and for each chain.

Chain	Atom inclusion	Q-score
All	<div></div> 0.8280	<div></div> 0.1130
A	<div></div> 0.8320	<div></div> 0.1170
B	<div></div> 0.7480	<div></div> 0.0990
C	<div></div> 0.9110	<div></div> 0.1040

