



# wwPDB X-ray Structure Validation Summary Report ⓘ

Jun 16, 2024 – 10:03 AM EDT

PDB ID : 2V12  
Title : Crystal Structure of Renin with Inhibitor 8  
Authors : Rahuel, J.; Rasetti, V.; Maibaum, J.; Rueger, H.; Goschke, R.; Cohen, N.C.;  
Stutz, S.; Cumin, F.; Fuhrer, W.; Wood, J.M.; Grutter, M.G.  
Deposited on : 2007-05-21  
Resolution : 3.20 Å(reported)

This is a wwPDB X-ray Structure Validation Summary Report for a publicly released PDB entry.

We welcome your comments at [validation@mail.wwpdb.org](mailto:validation@mail.wwpdb.org)

A user guide is available at

<https://www.wwpdb.org/validation/2017/XrayValidationReportHelp>

with specific help available everywhere you see the ⓘ symbol.

The types of validation reports are described at

<http://www.wwpdb.org/validation/2017/FAQs#types>.

---

The following versions of software and data (see [references ⓘ](#)) were used in the production of this report:

MolProbity	:	4.02b-467
Mogul	:	2022.3.0, CSD as543be (2022)
Xtriage (Phenix)	:	NOT EXECUTED
EDS	:	NOT EXECUTED
buster-report	:	1.1.7 (2018)
Percentile statistics	:	20191225.v01 (using entries in the PDB archive December 25th 2019)
Ideal geometry (proteins)	:	Engh & Huber (2001)
Ideal geometry (DNA, RNA)	:	Parkinson et al. (1996)
Validation Pipeline (wwPDB-VP)	:	2.37.1

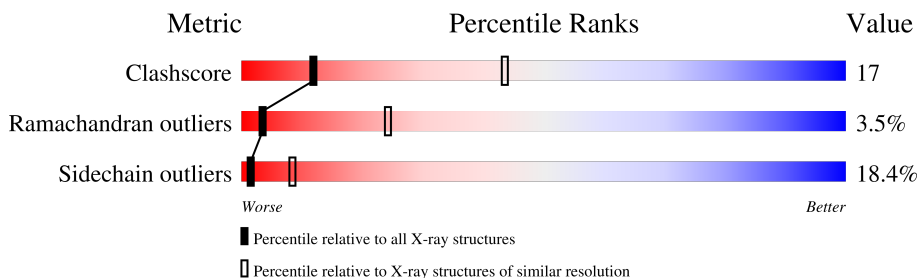
# 1 Overall quality at a glance

The following experimental techniques were used to determine the structure:

*X-RAY DIFFRACTION*

The reported resolution of this entry is 3.20 Å.

Percentile scores (ranging between 0-100) for global validation metrics of the entry are shown in the following graphic. The table shows the number of entries on which the scores are based.



Metric	Whole archive (#Entries)	Similar resolution (#Entries, resolution range(Å))
Clashscore	141614	1253 (3.20-3.20)
Ramachandran outliers	138981	1234 (3.20-3.20)
Sidechain outliers	138945	1233 (3.20-3.20)

The table below summarises the geometric issues observed across the polymeric chains and their fit to the electron density. The red, orange, yellow and green segments of the lower bar indicate the fraction of residues that contain outliers for  $\geq 3$ , 2, 1 and 0 types of geometric quality criteria respectively. A grey segment represents the fraction of residues that are not modelled. The numeric value for each fraction is indicated below the corresponding segment, with a dot representing fractions  $\leq 5\%$ .

Note EDS was not executed.

Mol	Chain	Length	Quality of chain
1	C	340	<div> <div style="width: 52%; background-color: green;"></div> <div style="width: 33%; background-color: yellow;"></div> <div style="width: 11%; background-color: orange;"></div> <div style="width: 4%; background-color: red;"></div> <div style="width: 10%; background-color: grey;"></div> </div> <div>52% 33% 11% . .</div>
1	O	340	<div> <div style="width: 48%; background-color: green;"></div> <div style="width: 35%; background-color: yellow;"></div> <div style="width: 13%; background-color: orange;"></div> <div style="width: 4%; background-color: red;"></div> <div style="width: 10%; background-color: grey;"></div> </div> <div>48% 35% 13% . .</div>

## 2 Entry composition [i](#)

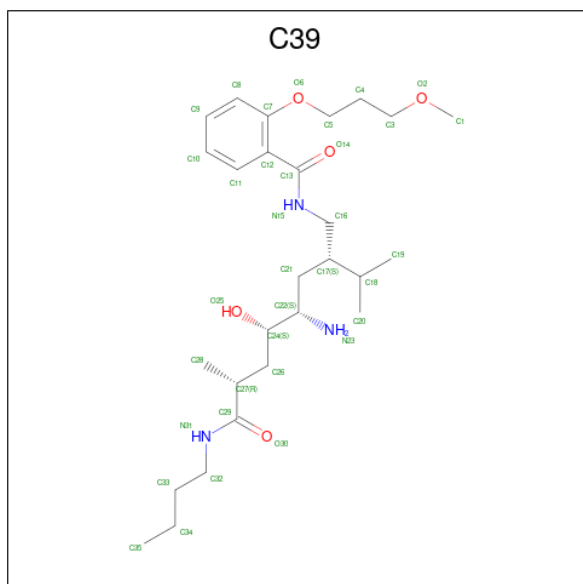
There are 2 unique types of molecules in this entry. The entry contains 5194 atoms, of which 0 are hydrogens and 0 are deuteriums.

In the tables below, the ZeroOcc column contains the number of atoms modelled with zero occupancy, the AltConf column contains the number of residues with at least one atom in alternate conformation and the Trace column contains the number of residues modelled with at most 2 atoms.

- Molecule 1 is a protein called RENIN.

Mol	Chain	Residues	Atoms					ZeroOcc	AltConf	Trace
1	C	334	Total	C	N	O	S	0	0	1
			2567	1639	416	498	14			
1	O	332	Total	C	N	O	S	0	0	1
			2557	1634	414	495	14			

- Molecule 2 is N-[(2S,4S,5S,7R)-4-AMINO-8-(BUTYLAMINO)-5-HYDROXY-7-METHYL-2-(1-METHYLETHYL)-8-OXOOCTYL]-2-(3-METHOXYPROPOXY)BENZAMIDE (three-letter code: C39) (formula: C<sub>27</sub>H<sub>47</sub>N<sub>3</sub>O<sub>5</sub>).



Mol	Chain	Residues	Atoms				ZeroOcc	AltConf
2	C	1	Total	C	N	O	0	0
			35	27	3	5		
2	O	1	Total	C	N	O	0	0
			35	27	3	5		



## 4 Data and refinement statistics

Xtriage (Phenix) and EDS were not executed - this section is therefore incomplete.

Property	Value	Source
Space group	P 21 3	Depositor
Cell constants a, b, c, $\alpha$ , $\beta$ , $\gamma$	142.90 Å   142.90 Å   142.90 Å 90.00°   90.00°   90.00°	Depositor
Resolution (Å)	10.00 – 3.20	Depositor
% Data completeness (in resolution range)	92.0 (10.00-3.20)	Depositor
$R_{merge}$	0.13	Depositor
$R_{sym}$	(Not available)	Depositor
Refinement program	X-PLOR	Depositor
R, $R_{free}$	0.236 , (Not available)	Depositor
Estimated twinning fraction	No twinning to report.	Xtriage
Total number of atoms	5194	wwPDB-VP
Average B, all atoms (Å <sup>2</sup> )	15.0	wwPDB-VP

## 5 Model quality

### 5.1 Standard geometry

Bond lengths and bond angles in the following residue types are not validated in this section: C39

The Z score for a bond length (or angle) is the number of standard deviations the observed value is removed from the expected value. A bond length (or angle) with  $|Z| > 5$  is considered an outlier worth inspection. RMSZ is the root-mean-square of all Z scores of the bond lengths (or angles).

Mol	Chain	Bond lengths		Bond angles	
		RMSZ	$\# Z  > 5$	RMSZ	$\# Z  > 5$
1	C	1.13	2/2626 (0.1%)	1.86	62/3560 (1.7%)
1	O	1.12	4/2616 (0.2%)	1.92	64/3547 (1.8%)
All	All	1.13	6/5242 (0.1%)	1.89	126/7107 (1.8%)

Chiral center outliers are detected by calculating the chiral volume of a chiral center and verifying if the center is modelled as a planar moiety or with the opposite hand. A planarity outlier is detected by checking planarity of atoms in a peptide group, atoms in a mainchain group or atoms of a sidechain that are expected to be planar.

Mol	Chain	#Chirality outliers	#Planarity outliers
1	C	0	1
1	O	0	4
All	All	0	5

The worst 5 of 6 bond length outliers are listed below:

Mol	Chain	Res	Type	Atoms	Z	Observed(Å)	Ideal(Å)
1	O	171	SER	CA-CB	6.08	1.62	1.52
1	C	244	GLU	CG-CD	5.39	1.60	1.51
1	O	8	SER	CA-CB	-5.25	1.45	1.52
1	C	78	GLU	CG-CD	5.17	1.59	1.51
1	O	78	GLU	CG-CD	5.16	1.59	1.51

The worst 5 of 126 bond angle outliers are listed below:

Mol	Chain	Res	Type	Atoms	Z	Observed(°)	Ideal(°)
1	O	53	ARG	NE-CZ-NH1	14.64	127.62	120.30
1	O	324	TYR	CB-CG-CD2	-12.55	113.47	121.00
1	C	139	ARG	NE-CZ-NH1	10.42	125.51	120.30
1	C	251	ARG	NE-CZ-NH1	9.46	125.03	120.30

*Continued on next page...*

*Continued from previous page...*

Mol	Chain	Res	Type	Atoms	Z	Observed(°)	Ideal(°)
1	C	139	ARG	NE-CZ-NH2	-9.28	115.66	120.30

There are no chirality outliers.

All (5) planarity outliers are listed below:

Mol	Chain	Res	Type	Group
1	C	307	PRO	Peptide
1	O	182	ASP	Peptide
1	O	277	TYR	Sidechain
1	O	306	PRO	Peptide
1	O	307	PRO	Peptide

## 5.2 Too-close contacts [i](#)

In the following table, the Non-H and H(model) columns list the number of non-hydrogen atoms and hydrogen atoms in the chain respectively. The H(added) column lists the number of hydrogen atoms added and optimized by MolProbity. The Clashes column lists the number of clashes within the asymmetric unit, whereas Symm-Clashes lists symmetry-related clashes.

Mol	Chain	Non-H	H(model)	H(added)	Clashes	Symm-Clashes
1	C	2567	0	2498	88	0
1	O	2557	0	2490	90	0
2	C	35	0	47	6	0
2	O	35	0	47	5	0
All	All	5194	0	5082	178	0

The all-atom clashscore is defined as the number of clashes found per 1000 atoms (including hydrogen atoms). The all-atom clashscore for this structure is 17.

The worst 5 of 178 close contacts within the same asymmetric unit are listed below, sorted by their clash magnitude.

Atom-1	Atom-2	Interatomic distance (Å)	Clash overlap (Å)
1:O:5:ASN:HA	1:O:154:LYS:HD3	1.28	1.07
1:O:148:ILE:HD11	1:O:156:ASP:HB3	1.56	0.87
1:C:293:LYS:HG3	1:C:294:LYS:HG2	1.58	0.85
1:O:285:VAL:HG22	1:O:298:LEU:HD22	1.64	0.79
1:C:260:ASN:OD1	1:C:292:SER:HA	1.87	0.74

There are no symmetry-related clashes.

## 5.3 Torsion angles [i](#)

### 5.3.1 Protein backbone [i](#)

In the following table, the Percentiles column shows the percent Ramachandran outliers of the chain as a percentile score with respect to all X-ray entries followed by that with respect to entries of similar resolution.

The Analysed column shows the number of residues for which the backbone conformation was analysed, and the total number of residues.

Mol	Chain	Analysed	Favoured	Allowed	Outliers	Percentiles	
1	C	330/340 (97%)	296 (90%)	23 (7%)	11 (3%)	4	25
1	O	328/340 (96%)	281 (86%)	35 (11%)	12 (4%)	3	22
All	All	658/680 (97%)	577 (88%)	58 (9%)	23 (4%)	3	24

5 of 23 Ramachandran outliers are listed below:

Mol	Chain	Res	Type
1	C	166	SER
1	C	251	ARG
1	O	50	LYS
1	O	116	ALA
1	C	140	VAL

### 5.3.2 Protein sidechains [i](#)

In the following table, the Percentiles column shows the percent sidechain outliers of the chain as a percentile score with respect to all X-ray entries followed by that with respect to entries of similar resolution.

The Analysed column shows the number of residues for which the sidechain conformation was analysed, and the total number of residues.

Mol	Chain	Analysed	Rotameric	Outliers	Percentiles	
1	C	283/290 (98%)	228 (81%)	55 (19%)	1	7
1	O	282/290 (97%)	233 (83%)	49 (17%)	2	10
All	All	565/580 (97%)	461 (82%)	104 (18%)	1	8

5 of 104 residues with a non-rotameric sidechain are listed below:

Mol	Chain	Res	Type
1	O	28	THR

*Continued on next page...*



*Continued from previous page...*

Mol	Chain	Res	Type
1	O	118	PRO
1	O	272	LEU
1	O	41	SER
1	O	74	HIS

Sometimes sidechains can be flipped to improve hydrogen bonding and reduce clashes. 5 of 12 such sidechains are listed below:

Mol	Chain	Res	Type
1	O	146	ASN
1	O	175	GLN
1	O	332	ASN
1	O	194	ASN
1	C	204	GLN

### 5.3.3 RNA [i](#)

There are no RNA molecules in this entry.

## 5.4 Non-standard residues in protein, DNA, RNA chains [i](#)

There are no non-standard protein/DNA/RNA residues in this entry.

## 5.5 Carbohydrates [i](#)

There are no monosaccharides in this entry.

## 5.6 Ligand geometry [i](#)

2 ligands are modelled in this entry.

In the following table, the Counts columns list the number of bonds (or angles) for which Mogul statistics could be retrieved, the number of bonds (or angles) that are observed in the model and the number of bonds (or angles) that are defined in the Chemical Component Dictionary. The Link column lists molecule types, if any, to which the group is linked. The Z score for a bond length (or angle) is the number of standard deviations the observed value is removed from the expected value. A bond length (or angle) with  $|Z| > 2$  is considered an outlier worth inspection. RMSZ is the root-mean-square of all Z scores of the bond lengths (or angles).

Mol	Type	Chain	Res	Link	Bond lengths			Bond angles		
					Counts	RMSZ	# Z  > 2	Counts	RMSZ	# Z  > 2
2	C39	O	350	-	35,35,35	1.29	2 (5%)	35,44,44	1.89	8 (22%)
2	C39	C	350	-	35,35,35	1.40	2 (5%)	35,44,44	1.89	7 (20%)

In the following table, the Chirals column lists the number of chiral outliers, the number of chiral centers analysed, the number of these observed in the model and the number defined in the Chemical Component Dictionary. Similar counts are reported in the Torsion and Rings columns. '-' means no outliers of that kind were identified.

Mol	Type	Chain	Res	Link	Chirals	Torsions	Rings
2	C39	O	350	-	-	14/40/40/40	0/1/1/1
2	C39	C	350	-	-	15/40/40/40	0/1/1/1

All (4) bond length outliers are listed below:

Mol	Chain	Res	Type	Atoms	Z	Observed(Å)	Ideal(Å)
2	C	350	C39	C12-C13	-5.99	1.38	1.50
2	O	350	C39	C12-C13	-5.51	1.39	1.50
2	C	350	C39	C11-C12	-2.32	1.36	1.39
2	O	350	C39	O6-C7	2.23	1.41	1.37

The worst 5 of 15 bond angle outliers are listed below:

Mol	Chain	Res	Type	Atoms	Z	Observed(°)	Ideal(°)
2	C	350	C39	O6-C7-C8	-4.94	113.17	123.95
2	O	350	C39	O6-C7-C12	4.82	127.57	116.97
2	C	350	C39	O6-C7-C12	4.68	127.28	116.97
2	C	350	C39	C27-C29-N31	4.39	122.37	116.68
2	O	350	C39	O6-C7-C8	-4.31	114.55	123.95

There are no chirality outliers.

5 of 29 torsion outliers are listed below:

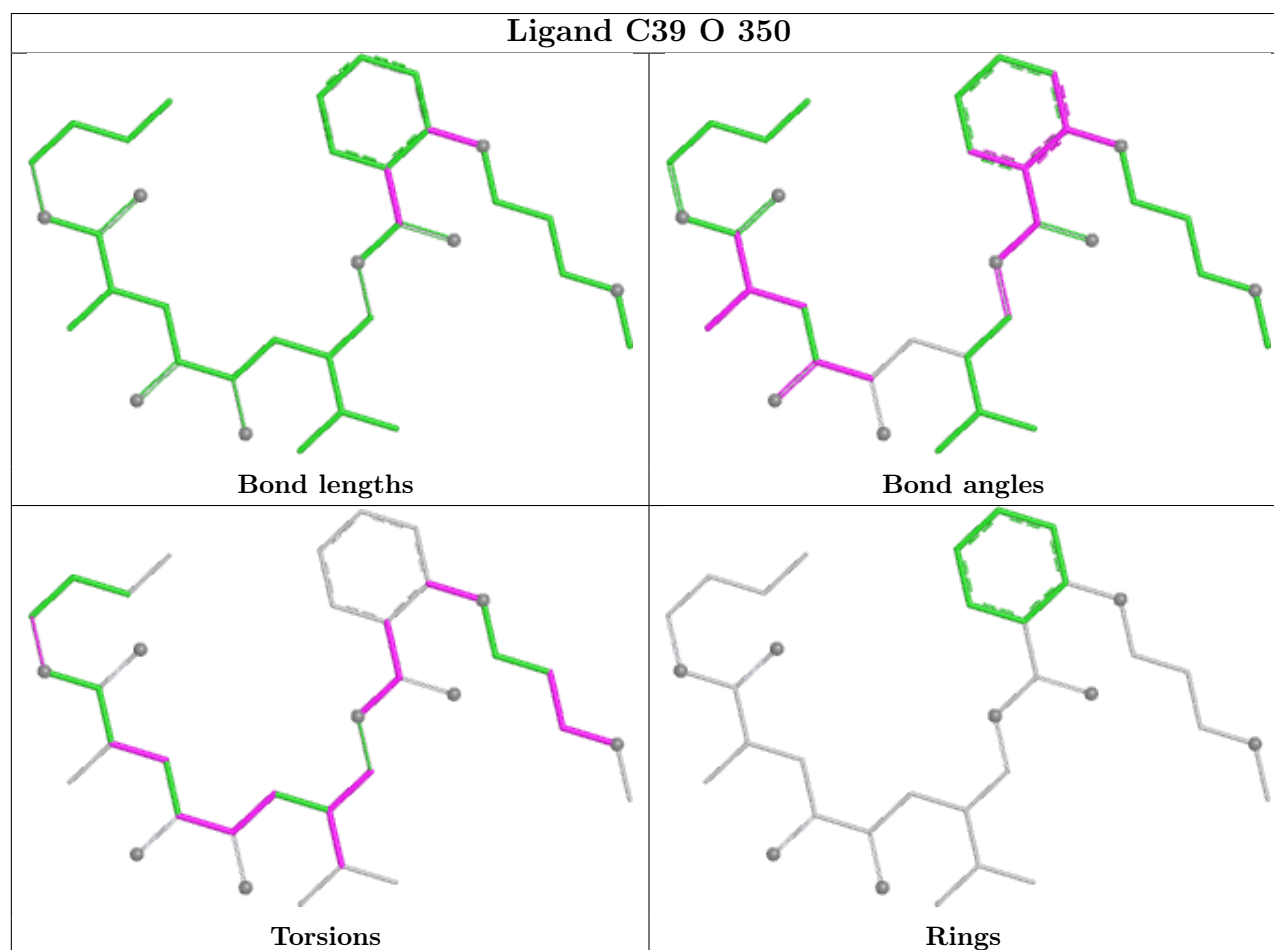
Mol	Chain	Res	Type	Atoms
2	C	350	C39	C17-C21-C22-N23
2	C	350	C39	O30-C29-N31-C32
2	O	350	C39	C17-C21-C22-N23
2	O	350	C39	C12-C13-N15-C16
2	C	350	C39	O2-C3-C4-C5

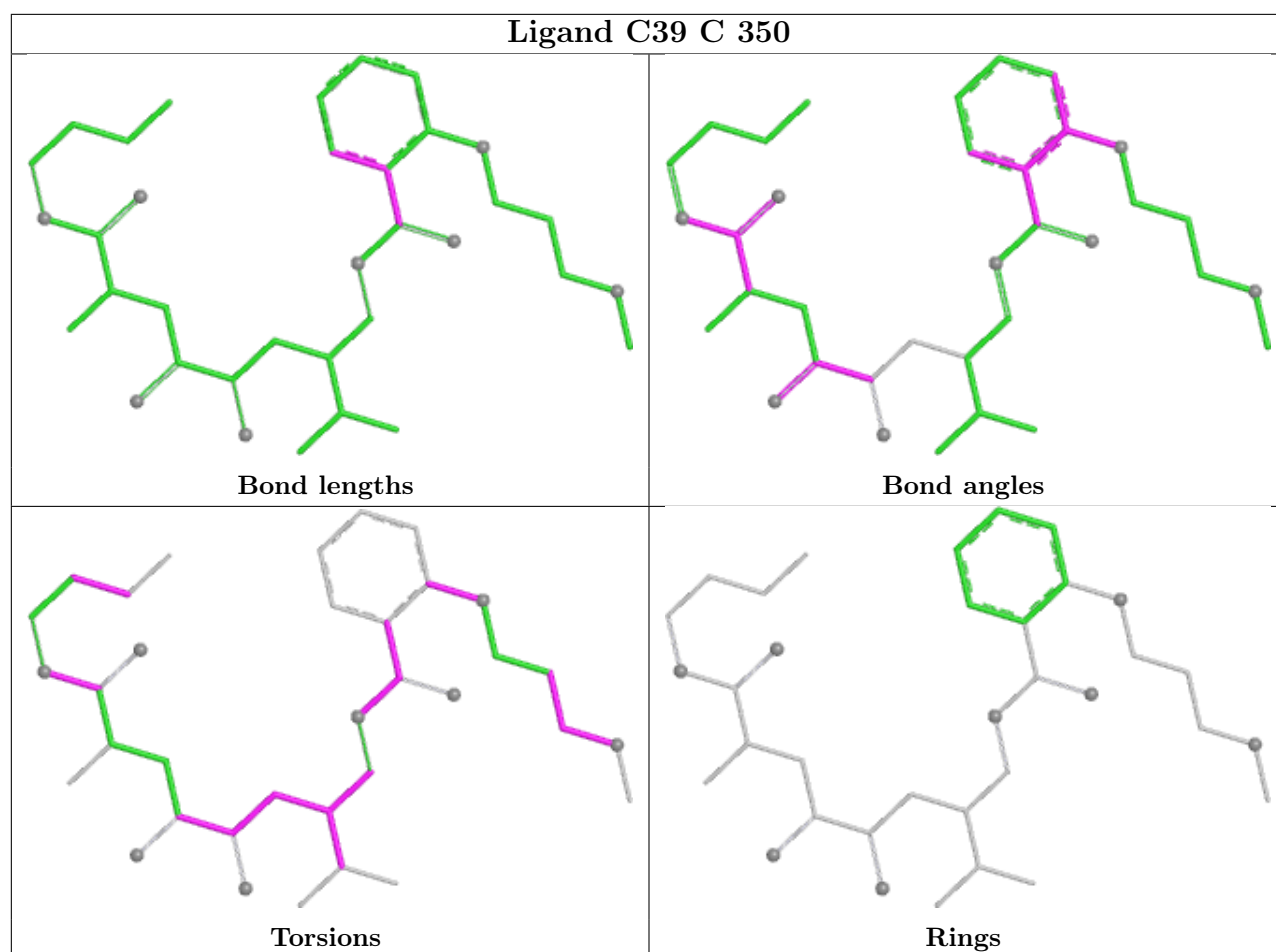
There are no ring outliers.

2 monomers are involved in 11 short contacts:

Mol	Chain	Res	Type	Clashes	Symm-Clashes
2	O	350	C39	5	0
2	C	350	C39	6	0

The following is a two-dimensional graphical depiction of Mogul quality analysis of bond lengths, bond angles, torsion angles, and ring geometry for all instances of the Ligand of Interest. In addition, ligands with molecular weight > 250 and outliers as shown on the validation Tables will also be included. For torsion angles, if less than 5% of the Mogul distribution of torsion angles is within 10 degrees of the torsion angle in question, then that torsion angle is considered an outlier. Any bond that is central to one or more torsion angles identified as an outlier by Mogul will be highlighted in the graph. For rings, the root-mean-square deviation (RMSD) between the ring in question and similar rings identified by Mogul is calculated over all ring torsion angles. If the average RMSD is greater than 60 degrees and the minimal RMSD between the ring in question and any Mogul-identified rings is also greater than 60 degrees, then that ring is considered an outlier. The outliers are highlighted in purple. The color gray indicates Mogul did not find sufficient equivalents in the CSD to analyse the geometry.





## 5.7 Other polymers [i](#)

There are no such residues in this entry.

## 5.8 Polymer linkage issues [i](#)

There are no chain breaks in this entry.

## 6 Fit of model and data

### 6.1 Protein, DNA and RNA chains

EDS was not executed - this section is therefore empty.

### 6.2 Non-standard residues in protein, DNA, RNA chains

EDS was not executed - this section is therefore empty.

### 6.3 Carbohydrates

EDS was not executed - this section is therefore empty.

### 6.4 Ligands

EDS was not executed - this section is therefore empty.

### 6.5 Other polymers

EDS was not executed - this section is therefore empty.