



wwPDB X-ray Structure Validation Summary Report ⓘ

Apr 29, 2024 – 04:12 pm BST

PDB ID : 4UFX
Title : Plasmodium vivax N-myristoyltransferase in complex with a pyridyl inhibitor (compound 19)
Authors : Yu, Z.; Brannigan, J.A.; Rangachari, K.; Heal, W.P.; Wilkinson, A.J.; Holder, A.A.; Tate, E.W.; Leatherbarrow, R.J.
Deposited on : 2015-03-19
Resolution : 1.49 Å(reported)

This is a wwPDB X-ray Structure Validation Summary Report for a publicly released PDB entry.

We welcome your comments at validation@mail.wwpdb.org

A user guide is available at

<https://www.wwpdb.org/validation/2017/XrayValidationReportHelp>

with specific help available everywhere you see the ⓘ symbol.

The types of validation reports are described at

<http://www.wwpdb.org/validation/2017/FAQs#types>.

The following versions of software and data (see [references ⓘ](#)) were used in the production of this report:

MolProbity	:	4.02b-467
Mogul	:	1.8.4, CSD as541be (2020)
Xtriage (Phenix)	:	1.13
EDS	:	2.36.2
buster-report	:	1.1.7 (2018)
Percentile statistics	:	20191225.v01 (using entries in the PDB archive December 25th 2019)
Refmac	:	5.8.0158
CCP4	:	7.0.044 (Gargrove)
Ideal geometry (proteins)	:	Engh & Huber (2001)
Ideal geometry (DNA, RNA)	:	Parkinson et al. (1996)
Validation Pipeline (wwPDB-VP)	:	2.36.2

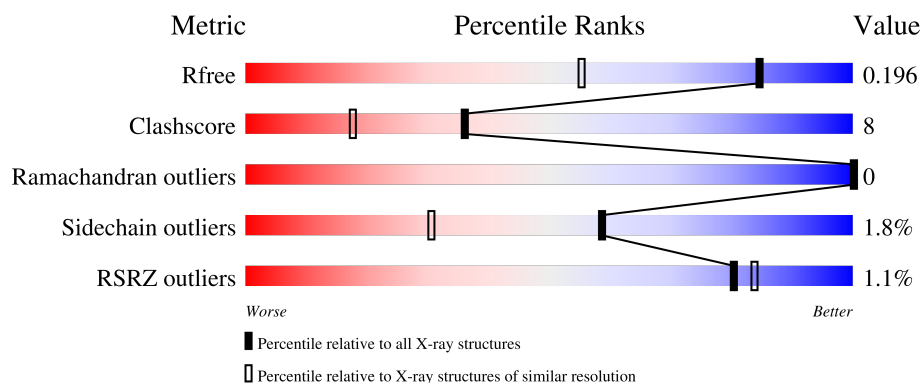
1 Overall quality at a glance

The following experimental techniques were used to determine the structure:

X-RAY DIFFRACTION

The reported resolution of this entry is 1.49 Å.

Percentile scores (ranging between 0-100) for global validation metrics of the entry are shown in the following graphic. The table shows the number of entries on which the scores are based.



Metric	Whole archive (#Entries)	Similar resolution (#Entries, resolution range(Å))
R_{free}	130704	2936 (1.50-1.50)
Clashscore	141614	3144 (1.50-1.50)
Ramachandran outliers	138981	3066 (1.50-1.50)
Sidechain outliers	138945	3064 (1.50-1.50)
RSRZ outliers	127900	2884 (1.50-1.50)

The table below summarises the geometric issues observed across the polymeric chains and their fit to the electron density. The red, orange, yellow and green segments of the lower bar indicate the fraction of residues that contain outliers for ≥ 3 , 2, 1 and 0 types of geometric quality criteria respectively. A grey segment represents the fraction of residues that are not modelled. The numeric value for each fraction is indicated below the corresponding segment, with a dot representing fractions $\leq 5\%$. The upper red bar (where present) indicates the fraction of residues that have poor fit to the electron density. The numeric value is given above the bar.

Mol	Chain	Length	Quality of chain
1	A	385	<div> <div></div> <div>85% 13% .</div> </div>
1	B	385	<div> <div></div> <div>87% 12% .</div> </div>
1	C	385	<div> <div></div> <div>81% 14% . .</div> </div>

The following table lists non-polymeric compounds, carbohydrate monomers and non-standard

residues in protein, DNA, RNA chains that are outliers for geometric or electron-density-fit criteria:

Mol	Type	Chain	Res	Chirality	Geometry	Clashes	Electron density
6	CL	A	1415	-	-	X	-

2 Entry composition [i](#)

There are 8 unique types of molecules in this entry. The entry contains 11935 atoms, of which 0 are hydrogens and 0 are deuteriums.

In the tables below, the ZeroOcc column contains the number of atoms modelled with zero occupancy, the AltConf column contains the number of residues with at least one atom in alternate conformation and the Trace column contains the number of residues modelled with at most 2 atoms.

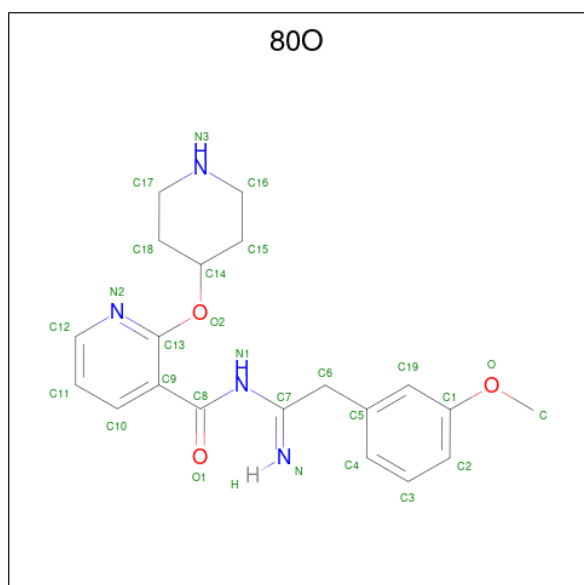
- Molecule 1 is a protein called GLYCYLPEPTIDE N-TETRADECANOYLTRANSFERASE.

Mol	Chain	Residues	Atoms					ZeroOcc	AltConf	Trace
1	A	385	Total	C	N	O	S	0	29	0
			3335	2185	536	601	13			
1	B	385	Total	C	N	O	S	0	42	0
			3413	2241	543	616	13			
1	C	372	Total	C	N	O	S	0	41	0
			3308	2187	518	591	12			

There are 3 discrepancies between the modelled and reference sequences:

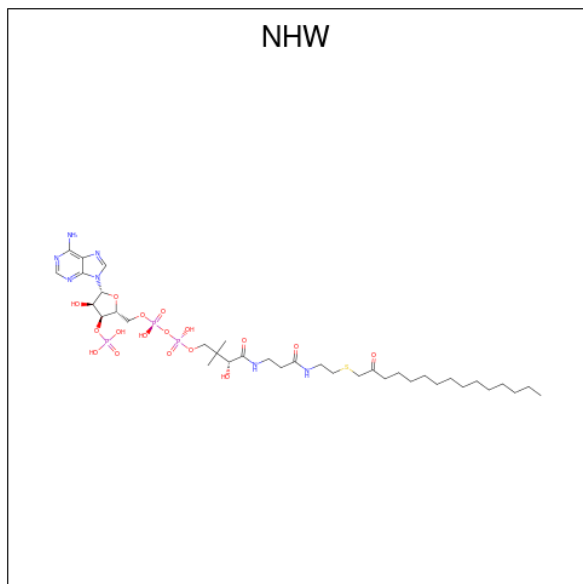
Chain	Residue	Modelled	Actual	Comment	Reference
A	26	MET	-	expression tag	UNP A5K1A2
B	26	MET	-	expression tag	UNP A5K1A2
C	26	MET	-	expression tag	UNP A5K1A2

- Molecule 2 is N-[2-(3-methoxyphenyl)ethanimidoyl]-2-piperidin-4-yloxy-pyridine-3-carboxamide (three-letter code: 80O) (formula: C₂₀H₂₄N₄O₃).



Mol	Chain	Residues	Atoms				ZeroOcc	AltConf
2	A	1	Total	C	N	O	0	0
			27	20	4	3		
2	B	1	Total	C	N	O	0	0
			27	20	4	3		
2	C	1	Total	C	N	O	0	0
			27	20	4	3		

- Molecule 3 is 2-oxopentadecyl-CoA (three-letter code: NHW) (formula: $C_{36}H_{64}N_7O_{17}P_3S$).



Mol	Chain	Residues	Atoms						ZeroOcc	AltConf
3	A	1	Total	C	N	O	P	S	0	0
			64	36	7	17	3	1		
3	B	1	Total	C	N	O	P	S	0	0
			64	36	7	17	3	1		
3	C	1	Total	C	N	O	P	S	0	0
			64	36	7	17	3	1		

- Molecule 4 is SULFATE ION (three-letter code: SO4) (formula: O_4S).



Mol	Chain	Residues	Atoms			ZeroOcc	AltConf
4	A	1	Total	O	S	0	0
			5	4	1		
4	B	1	Total	O	S	0	0
			5	4	1		

- Molecule 5 is MAGNESIUM ION (three-letter code: MG) (formula: Mg).

Mol	Chain	Residues	Atoms		ZeroOcc	AltConf
5	A	1	Total	Mg	0	0
			1	1		
5	B	1	Total	Mg	0	0
			1	1		
5	C	1	Total	Mg	0	0
			1	1		

- Molecule 6 is CHLORIDE ION (three-letter code: CL) (formula: Cl).

Mol	Chain	Residues	Atoms		ZeroOcc	AltConf
6	A	3	Total	Cl	0	0
			3	3		
6	B	2	Total	Cl	0	0
			2	2		
6	C	1	Total	Cl	0	0
			1	1		

- Molecule 7 is DIMETHYL SULFOXIDE (three-letter code: DMS) (formula: C₂H₆OS).



Mol	Chain	Residues	Atoms				ZeroOcc	AltConf
7	A	1	Total	C	O	S	0	0
			4	2	1	1		
7	A	1	Total	C	O	S	0	0
			4	2	1	1		
7	B	1	Total	C	O	S	0	0
			4	2	1	1		
7	B	1	Total	C	O	S	0	0
			4	2	1	1		
7	C	1	Total	C	O	S	0	0
			4	2	1	1		

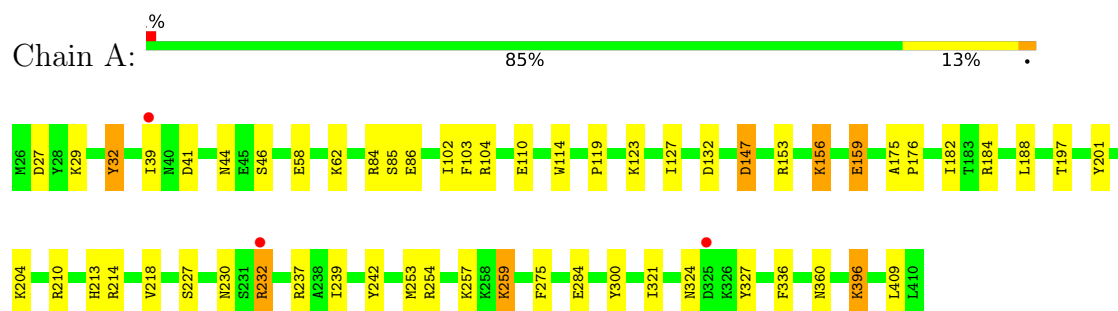
- Molecule 8 is water.

Mol	Chain	Residues	Atoms		ZeroOcc	AltConf
8	A	583	Total	O	0	0
			583	583		
8	B	466	Total	O	0	0
			466	466		
8	C	518	Total	O	0	0
			518	518		

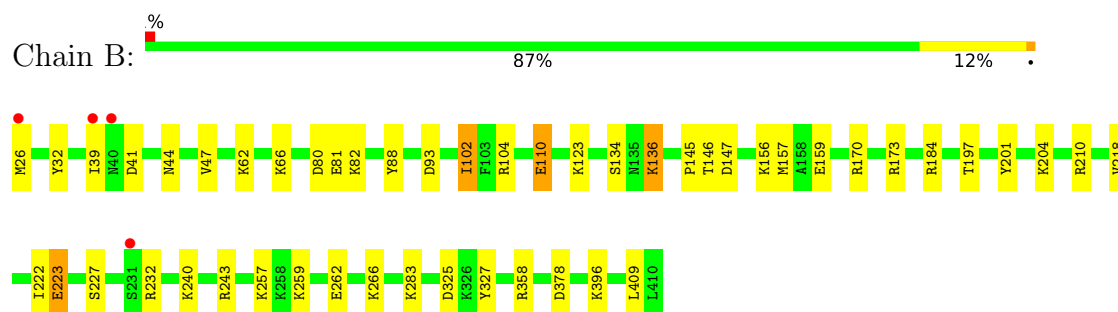
3 Residue-property plots

These plots are drawn for all protein, RNA, DNA and oligosaccharide chains in the entry. The first graphic for a chain summarises the proportions of the various outlier classes displayed in the second graphic. The second graphic shows the sequence view annotated by issues in geometry and electron density. Residues are color-coded according to the number of geometric quality criteria for which they contain at least one outlier: green = 0, yellow = 1, orange = 2 and red = 3 or more. A red dot above a residue indicates a poor fit to the electron density ($RSRZ > 2$). Stretches of 2 or more consecutive residues without any outlier are shown as a green connector. Residues present in the sample, but not in the model, are shown in grey.

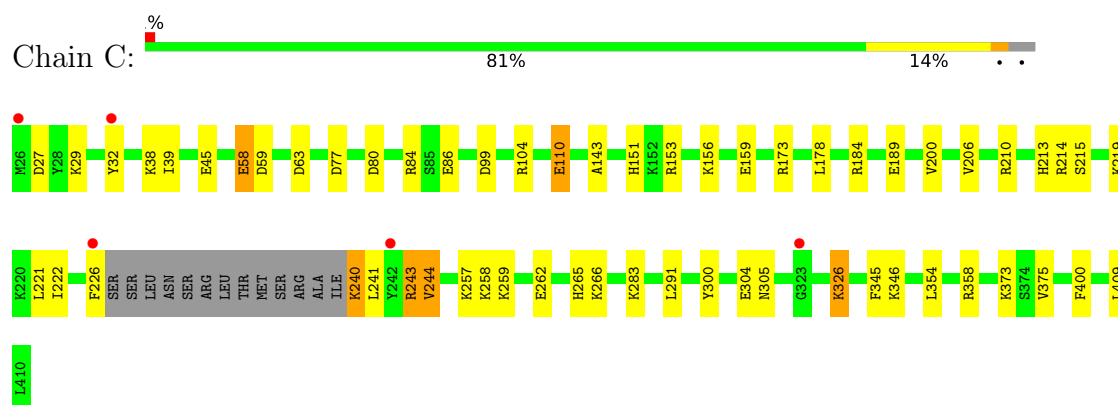
• Molecule 1: GLYCYLPEPTIDE N-TETRADECANOYLTRANSFERASE



• Molecule 1: GLYCYLPEPTIDE N-TETRADECANOYLTRANSFERASE



• Molecule 1: GLYCYLPEPTIDE N-TETRADECANOYLTRANSFERASE



4 Data and refinement statistics

Property	Value	Source
Space group	P 21 21 21	Depositor
Cell constants a, b, c, α , β , γ	57.33Å 118.89Å 174.90Å 90.00° 90.00° 90.00°	Depositor
Resolution (Å)	98.32 – 1.49 87.45 – 1.49	Depositor EDS
% Data completeness (in resolution range)	99.8 (98.32-1.49) 99.8 (87.45-1.49)	Depositor EDS
R_{merge}	0.10	Depositor
R_{sym}	(Not available)	Depositor
$\langle I/\sigma(I) \rangle$ ¹	1.76 (at 1.49Å)	Xtriage
Refinement program	REFMAC 5.8.0033	Depositor
R, R_{free}	0.158 , 0.197 0.158 , 0.196	Depositor DCC
R_{free} test set	9856 reflections (5.06%)	wwPDB-VP
Wilson B-factor (Å ²)	10.3	Xtriage
Anisotropy	0.657	Xtriage
Bulk solvent k_{sol} (e/Å ³), B_{sol} (Å ²)	0.35 , 47.9	EDS
L-test for twinning ²	$\langle L \rangle = 0.45$, $\langle L^2 \rangle = 0.28$	Xtriage
Estimated twinning fraction	No twinning to report.	Xtriage
F_o, F_c correlation	0.97	EDS
Total number of atoms	11935	wwPDB-VP
Average B, all atoms (Å ²)	14.0	wwPDB-VP

Xtriage's analysis on translational NCS is as follows: *The largest off-origin peak in the Patterson function is 4.01% of the height of the origin peak. No significant pseudotranslation is detected.*

¹Intensities estimated from amplitudes.

²Theoretical values of $\langle |L| \rangle$, $\langle L^2 \rangle$ for acentric reflections are 0.5, 0.333 respectively for untwinned datasets, and 0.375, 0.2 for perfectly twinned datasets.

5 Model quality

5.1 Standard geometry

Bond lengths and bond angles in the following residue types are not validated in this section: DMS, SO4, MG, CL, 80O, NHW

The Z score for a bond length (or angle) is the number of standard deviations the observed value is removed from the expected value. A bond length (or angle) with $|Z| > 5$ is considered an outlier worth inspection. RMSZ is the root-mean-square of all Z scores of the bond lengths (or angles).

Mol	Chain	Bond lengths		Bond angles	
		RMSZ	# $ Z > 5$	RMSZ	# $ Z > 5$
1	A	1.16	4/3500 (0.1%)	1.20	16/4734 (0.3%)
1	B	1.18	3/3620 (0.1%)	1.16	11/4888 (0.2%)
1	C	1.15	2/3513 (0.1%)	1.19	12/4746 (0.3%)
All	All	1.16	9/10633 (0.1%)	1.18	39/14368 (0.3%)

Chiral center outliers are detected by calculating the chiral volume of a chiral center and verifying if the center is modelled as a planar moiety or with the opposite hand. A planarity outlier is detected by checking planarity of atoms in a peptide group, atoms in a mainchain group or atoms of a sidechain that are expected to be planar.

Mol	Chain	#Chirality outliers	#Planarity outliers
1	C	0	1

The worst 5 of 9 bond length outliers are listed below:

Mol	Chain	Res	Type	Atoms	Z	Observed(Å)	Ideal(Å)
1	C	189	GLU	CD-OE2	-5.97	1.19	1.25
1	A	159	GLU	CD-OE1	5.92	1.32	1.25
1	A	114	TRP	CZ3-CH2	5.56	1.49	1.40
1	C	63	ASP	CB-CG	5.41	1.63	1.51
1	A	32	TYR	CB-CG	5.17	1.59	1.51

The worst 5 of 39 bond angle outliers are listed below:

Mol	Chain	Res	Type	Atoms	Z	Observed(°)	Ideal(°)
1	C	184	ARG	NE-CZ-NH2	-10.34	115.13	120.30
1	A	104	ARG	NE-CZ-NH1	10.02	125.31	120.30
1	A	104	ARG	NE-CZ-NH2	-9.90	115.35	120.30
1	B	184	ARG	NE-CZ-NH2	-9.60	115.50	120.30
1	C	104	ARG	NE-CZ-NH1	9.43	125.01	120.30

There are no chirality outliers.

All (1) planarity outliers are listed below:

Mol	Chain	Res	Type	Group
1	C	240	LYS	Peptide

5.2 Too-close contacts ⓘ

In the following table, the Non-H and H(model) columns list the number of non-hydrogen atoms and hydrogen atoms in the chain respectively. The H(added) column lists the number of hydrogen atoms added and optimized by MolProbity. The Clashes column lists the number of clashes within the asymmetric unit, whereas Symm-Clashes lists symmetry-related clashes.

Mol	Chain	Non-H	H(model)	H(added)	Clashes	Symm-Clashes
1	A	3335	0	3419	50	0
1	B	3413	0	3539	57	0
1	C	3308	0	3428	58	2
2	A	27	0	23	1	0
2	B	27	0	23	1	0
2	C	27	0	23	1	0
3	A	64	0	60	0	0
3	B	64	0	60	0	0
3	C	64	0	59	0	0
4	A	5	0	0	1	0
4	B	5	0	0	1	0
5	A	1	0	0	0	0
5	B	1	0	0	0	0
5	C	1	0	0	0	0
6	A	3	0	0	2	0
6	B	2	0	0	0	0
6	C	1	0	0	0	0
7	A	8	0	12	0	0
7	B	8	0	12	0	0
7	C	4	0	6	1	0
8	A	583	0	0	18	1
8	B	466	0	0	17	0
8	C	518	0	0	21	1
All	All	11935	0	10664	169	2

The all-atom clashscore is defined as the number of clashes found per 1000 atoms (including hydrogen atoms). The all-atom clashscore for this structure is 8.

The worst 5 of 169 close contacts within the same asymmetric unit are listed below, sorted by their clash magnitude.

Atom-1	Atom-2	Interatomic distance (Å)	Clash overlap (Å)
1:A:409[B]:LEU:HD23	8:A:2303:HOH:O	1.09	1.27
1:B:257[A]:LYS:HD2	1:B:259[A]:LYS:NZ	1.59	1.17
1:B:257[B]:LYS:HD2	8:B:2340:HOH:O	1.42	1.17
1:B:243[B]:ARG:NH2	8:B:2308:HOH:O	1.76	1.17
1:C:409[A]:LEU:HD23	8:C:2279:HOH:O	1.43	1.15

All (2) symmetry-related close contacts are listed below. The label for Atom-2 includes the symmetry operator and encoded unit-cell translations to be applied.

Atom-1	Atom-2	Interatomic distance (Å)	Clash overlap (Å)
1:C:373[A]:LYS:NZ	8:A:2159:HOH:O[4_456]	1.64	0.56
1:C:110[B]:GLU:OE1	8:C:2240:HOH:O[4_446]	2.02	0.18

5.3 Torsion angles ⓘ

5.3.1 Protein backbone ⓘ

In the following table, the Percentiles column shows the percent Ramachandran outliers of the chain as a percentile score with respect to all X-ray entries followed by that with respect to entries of similar resolution.

The Analysed column shows the number of residues for which the backbone conformation was analysed, and the total number of residues.

Mol	Chain	Analysed	Favoured	Allowed	Outliers	Percentiles	
1	A	412/385 (107%)	402 (98%)	10 (2%)	0	100	100
1	B	425/385 (110%)	416 (98%)	9 (2%)	0	100	100
1	C	409/385 (106%)	400 (98%)	9 (2%)	0	100	100
All	All	1246/1155 (108%)	1218 (98%)	28 (2%)	0	100	100

There are no Ramachandran outliers to report.

5.3.2 Protein sidechains ⓘ

In the following table, the Percentiles column shows the percent sidechain outliers of the chain as a percentile score with respect to all X-ray entries followed by that with respect to entries of similar resolution.

The Analysed column shows the number of residues for which the sidechain conformation was analysed, and the total number of residues.

Mol	Chain	Analysed	Rotameric	Outliers	Percentiles	
1	A	379/351 (108%)	375 (99%)	4 (1%)	73	53
1	B	393/351 (112%)	383 (98%)	10 (2%)	47	18
1	C	379/351 (108%)	366 (97%)	13 (3%)	37	9
All	All	1151/1053 (109%)	1124 (98%)	27 (2%)	59	20

5 of 27 residues with a non-rotameric sidechain are listed below:

Mol	Chain	Res	Type
1	C	58	GLU
1	C	110[B]	GLU
1	C	244	VAL
1	C	110[A]	GLU
1	C	214[A]	ARG

Sometimes sidechains can be flipped to improve hydrogen bonding and reduce clashes. 5 of 11 such sidechains are listed below:

Mol	Chain	Res	Type
1	B	360	ASN
1	C	34	GLN
1	C	350	GLN
1	C	249	ASN
1	B	34	GLN

5.3.3 RNA ⓘ

There are no RNA molecules in this entry.

5.4 Non-standard residues in protein, DNA, RNA chains ⓘ

There are no non-standard protein/DNA/RNA residues in this entry.

5.5 Carbohydrates ⓘ

There are no monosaccharides in this entry.

5.6 Ligand geometry ⓘ

Of 22 ligands modelled in this entry, 9 are monoatomic - leaving 13 for Mogul analysis.

In the following table, the Counts columns list the number of bonds (or angles) for which Mogul statistics could be retrieved, the number of bonds (or angles) that are observed in the model and the number of bonds (or angles) that are defined in the Chemical Component Dictionary. The Link column lists molecule types, if any, to which the group is linked. The Z score for a bond length (or angle) is the number of standard deviations the observed value is removed from the expected value. A bond length (or angle) with $|Z| > 2$ is considered an outlier worth inspection. RMSZ is the root-mean-square of all Z scores of the bond lengths (or angles).

Mol	Type	Chain	Res	Link	Bond lengths			Bond angles		
					Counts	RMSZ	# $ Z > 2$	Counts	RMSZ	# $ Z > 2$
2	80O	C	1000	-	29,29,29	2.23	6 (20%)	31,38,38	1.69	5 (16%)
3	NHW	A	1001	5	58,66,66	1.48	6 (10%)	70,92,92	1.51	10 (14%)
7	DMS	B	1415	-	3,3,3	0.56	0	3,3,3	1.25	0
4	SO4	A	1411	-	4,4,4	0.45	0	6,6,6	0.91	0
2	80O	A	1000	-	29,29,29	1.29	4 (13%)	31,38,38	1.64	4 (12%)
4	SO4	B	1411	-	4,4,4	0.15	0	6,6,6	1.23	0
3	NHW	C	1001	5	58,66,66	1.34	8 (13%)	70,92,92	1.49	11 (15%)
7	DMS	C	1413	-	3,3,3	0.57	0	3,3,3	0.92	0
2	80O	B	1000	-	29,29,29	1.57	6 (20%)	31,38,38	1.43	5 (16%)
7	DMS	A	1416	-	3,3,3	0.88	0	3,3,3	2.12	2 (66%)
7	DMS	B	1416	-	3,3,3	0.81	0	3,3,3	1.83	1 (33%)
3	NHW	B	1001	5	58,66,66	1.41	7 (12%)	70,92,92	1.31	6 (8%)
7	DMS	A	1417	-	3,3,3	0.70	0	3,3,3	1.84	2 (66%)

In the following table, the Chirals column lists the number of chiral outliers, the number of chiral centers analysed, the number of these observed in the model and the number defined in the Chemical Component Dictionary. Similar counts are reported in the Torsion and Rings columns. '-' means no outliers of that kind were identified.

Mol	Type	Chain	Res	Link	Chirals	Torsions	Rings
2	80O	C	1000	-	-	2/16/26/26	0/3/3/3
3	NHW	A	1001	5	-	0/61/81/81	0/3/3/3
2	80O	A	1000	-	-	3/16/26/26	0/3/3/3
3	NHW	C	1001	5	-	1/61/81/81	0/3/3/3
2	80O	B	1000	-	-	2/16/26/26	0/3/3/3
3	NHW	B	1001	5	-	1/61/81/81	0/3/3/3

The worst 5 of 37 bond length outliers are listed below:

Mol	Chain	Res	Type	Atoms	Z	Observed(Å)	Ideal(Å)
2	C	1000	80O	C6-C7	9.38	1.57	1.51
3	A	1001	NHW	O4X-C1X	7.29	1.51	1.41

Continued on next page...

Continued from previous page...

Mol	Chain	Res	Type	Atoms	Z	Observed(Å)	Ideal(Å)
3	C	1001	NHW	O4X-C1X	4.69	1.47	1.41
3	B	1001	NHW	C13-C11	3.96	1.62	1.53
2	B	1000	80O	C9-C13	-3.60	1.35	1.40

The worst 5 of 46 bond angle outliers are listed below:

Mol	Chain	Res	Type	Atoms	Z	Observed(°)	Ideal(°)
3	B	1001	NHW	N3A-C2A-N1A	-6.03	119.26	128.68
2	A	1000	80O	C8-N1-C7	-5.74	113.11	125.90
3	A	1001	NHW	C4A-C5A-N7A	-5.52	103.65	109.40
2	C	1000	80O	C8-N1-C7	-4.92	114.93	125.90
3	C	1001	NHW	O4X-C1X-C2X	-4.43	100.45	106.93

There are no chirality outliers.

5 of 9 torsion outliers are listed below:

Mol	Chain	Res	Type	Atoms
2	B	1000	80O	C18-C14-O2-C13
2	A	1000	80O	O1-C8-C9-C13
2	A	1000	80O	C18-C14-O2-C13
2	A	1000	80O	C15-C14-O2-C13
2	B	1000	80O	C15-C14-O2-C13

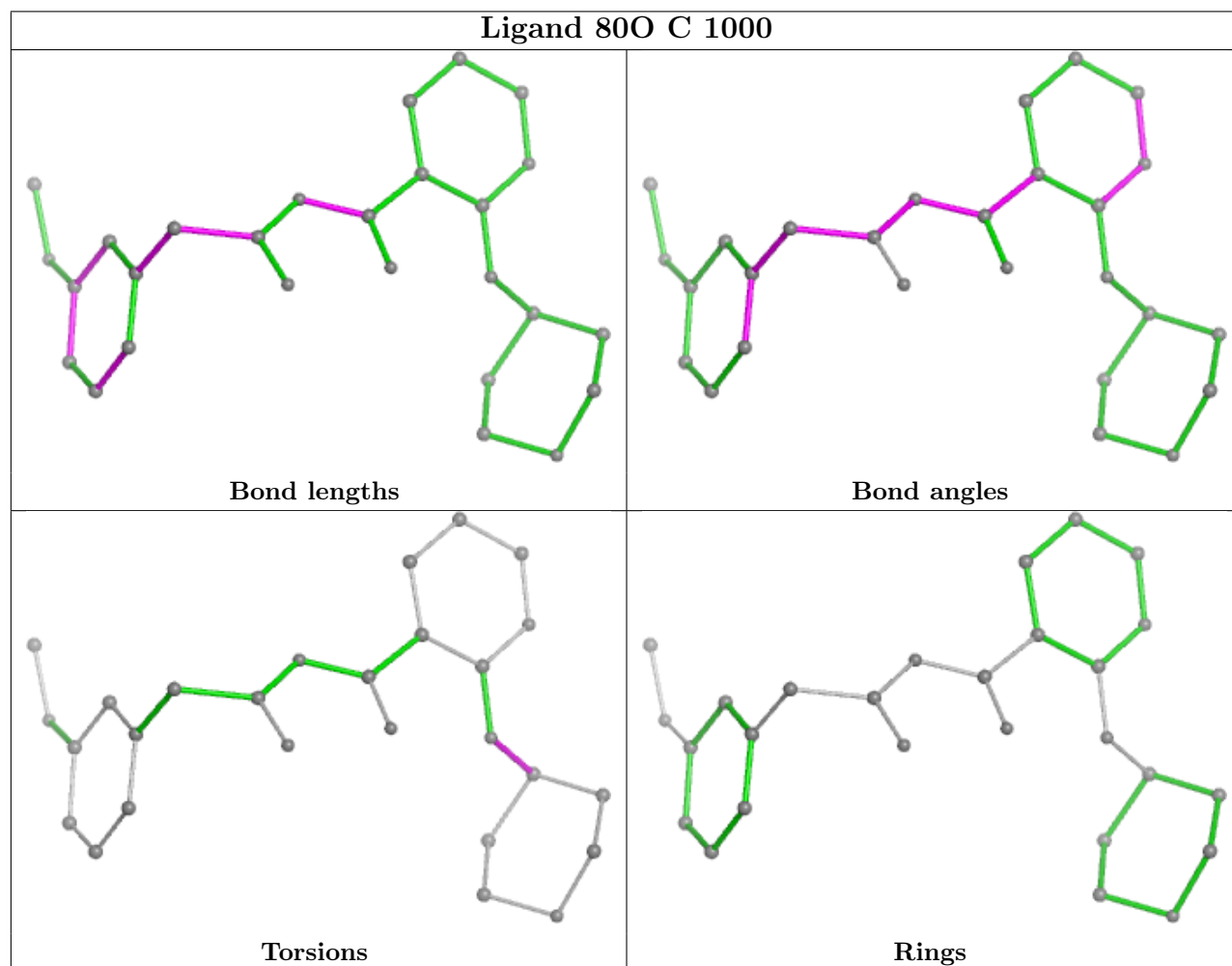
There are no ring outliers.

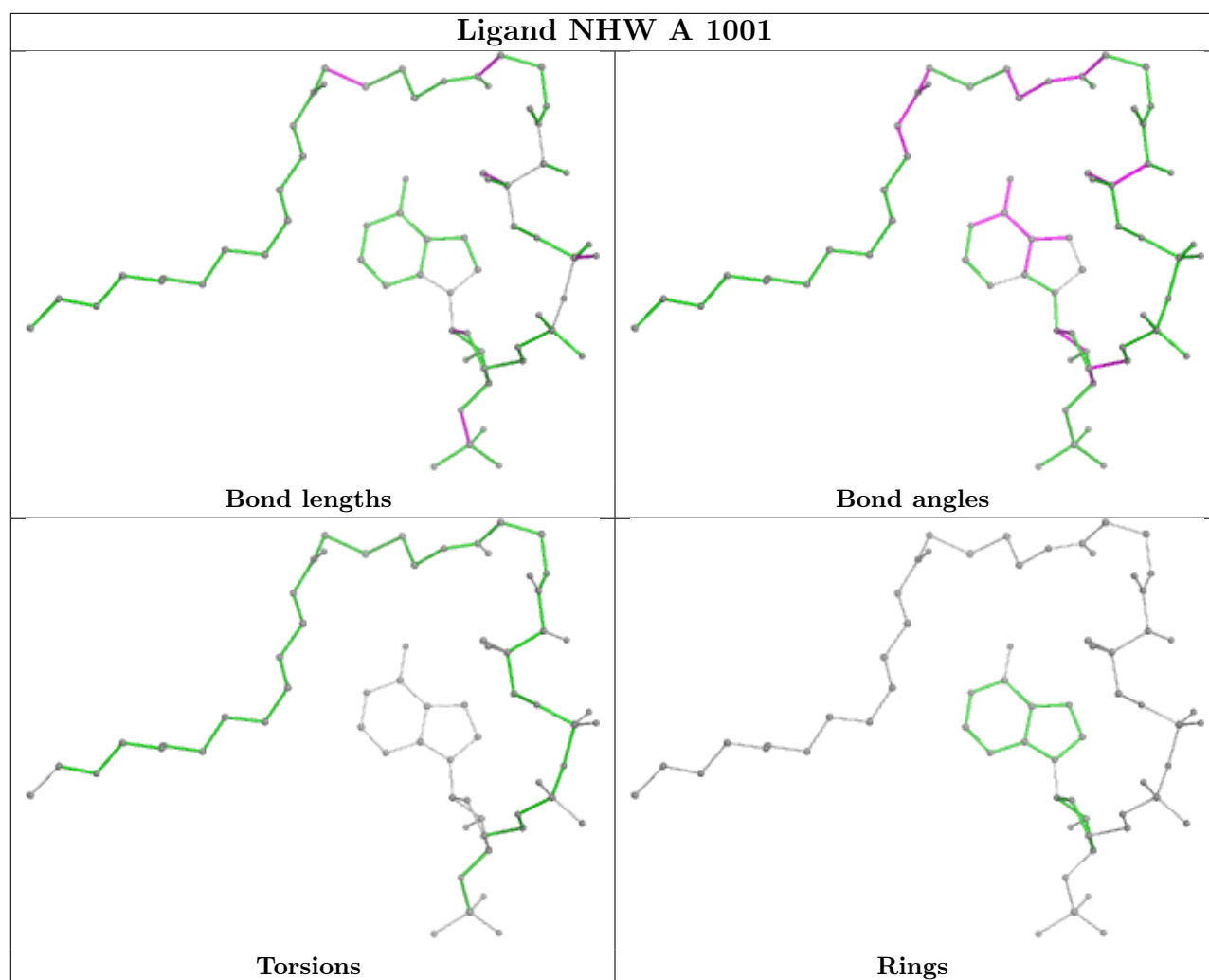
6 monomers are involved in 6 short contacts:

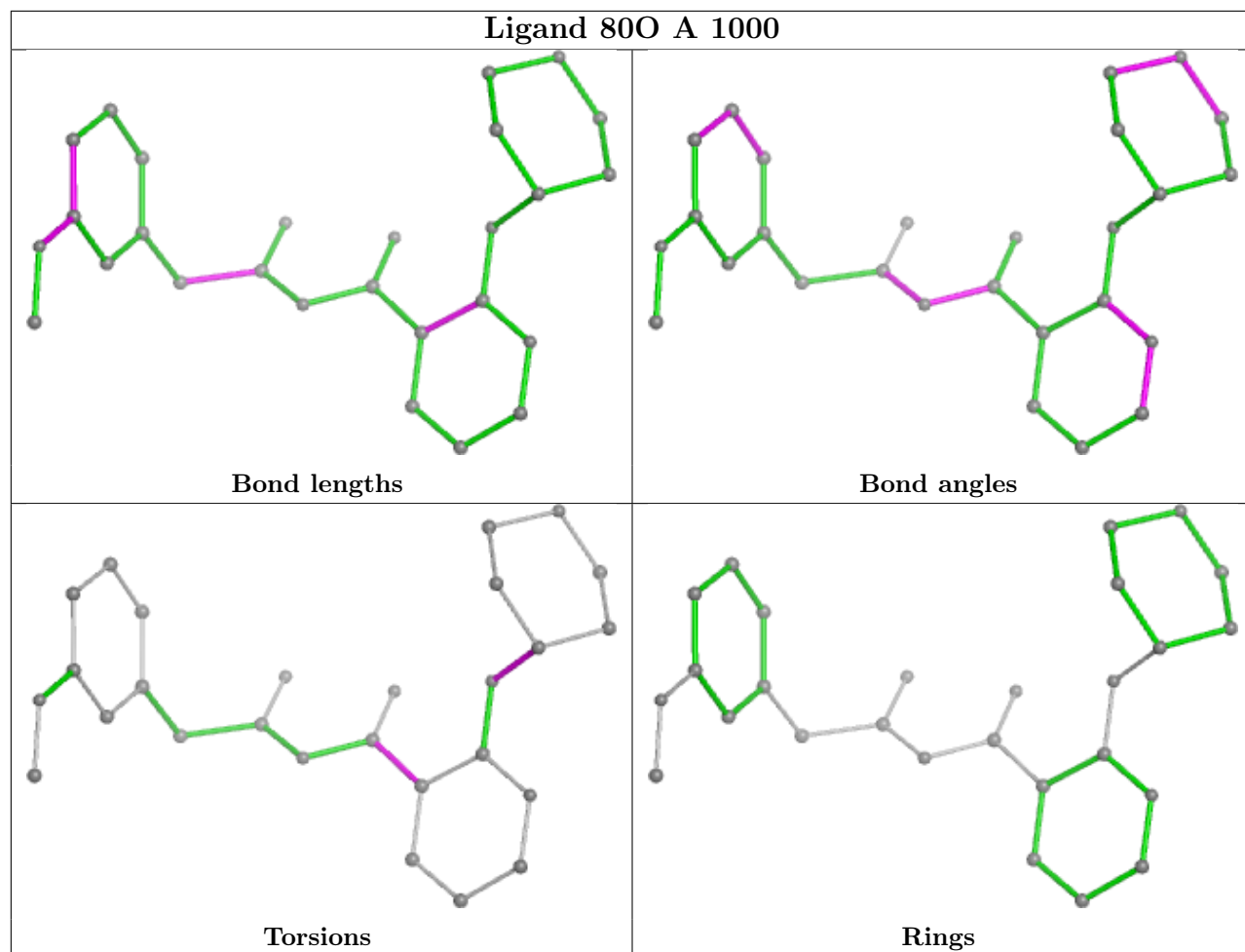
Mol	Chain	Res	Type	Clashes	Symm-Clashes
2	C	1000	80O	1	0
4	A	1411	SO4	1	0
2	A	1000	80O	1	0
4	B	1411	SO4	1	0
7	C	1413	DMS	1	0
2	B	1000	80O	1	0

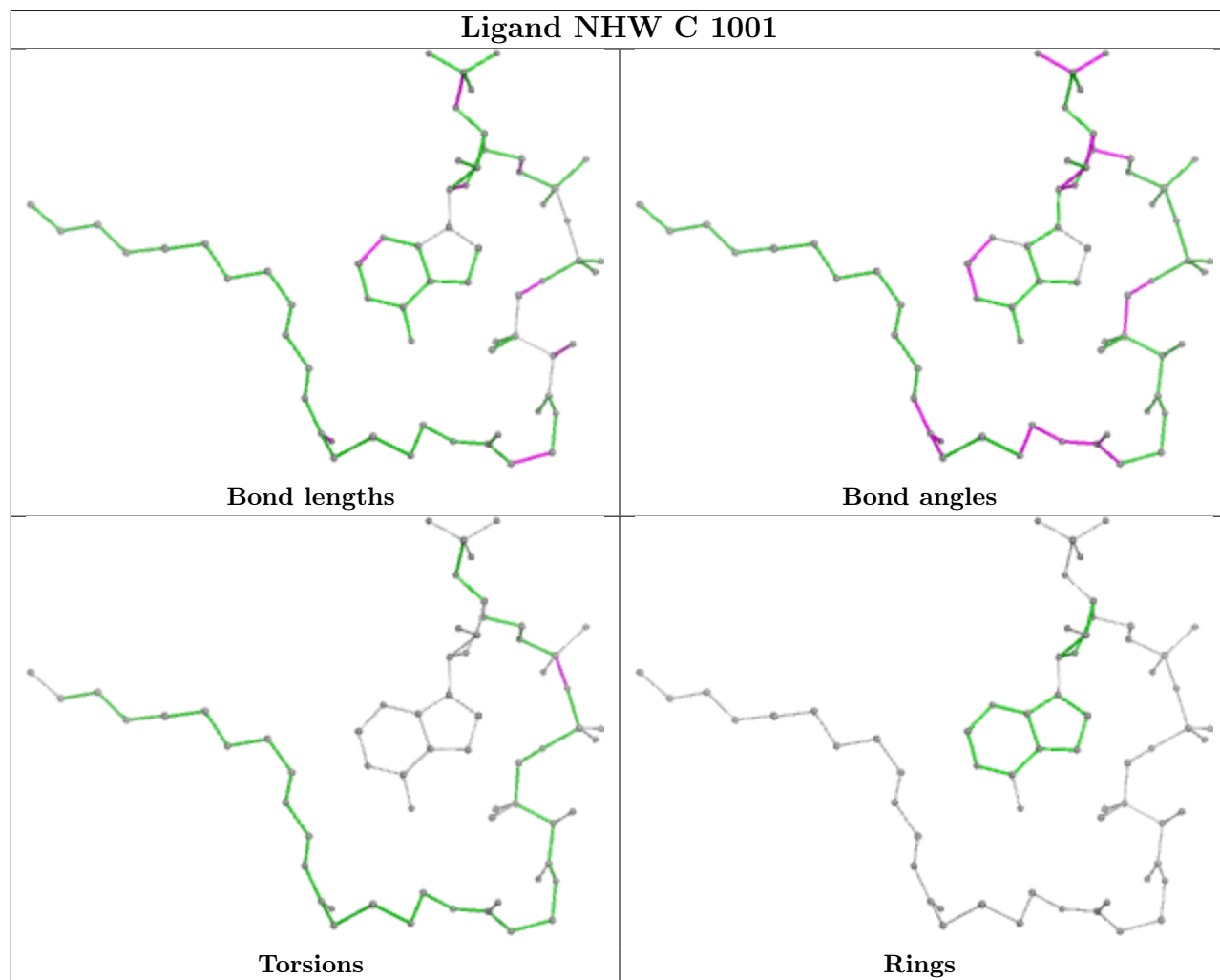
The following is a two-dimensional graphical depiction of Mogul quality analysis of bond lengths, bond angles, torsion angles, and ring geometry for all instances of the Ligand of Interest. In addition, ligands with molecular weight > 250 and outliers as shown on the validation Tables will also be included. For torsion angles, if less than 5% of the Mogul distribution of torsion angles is within 10 degrees of the torsion angle in question, then that torsion angle is considered an outlier. Any bond that is central to one or more torsion angles identified as an outlier by Mogul will be highlighted in the graph. For rings, the root-mean-square deviation (RMSD) between the ring in question and similar rings identified by Mogul is calculated over all ring torsion angles. If the

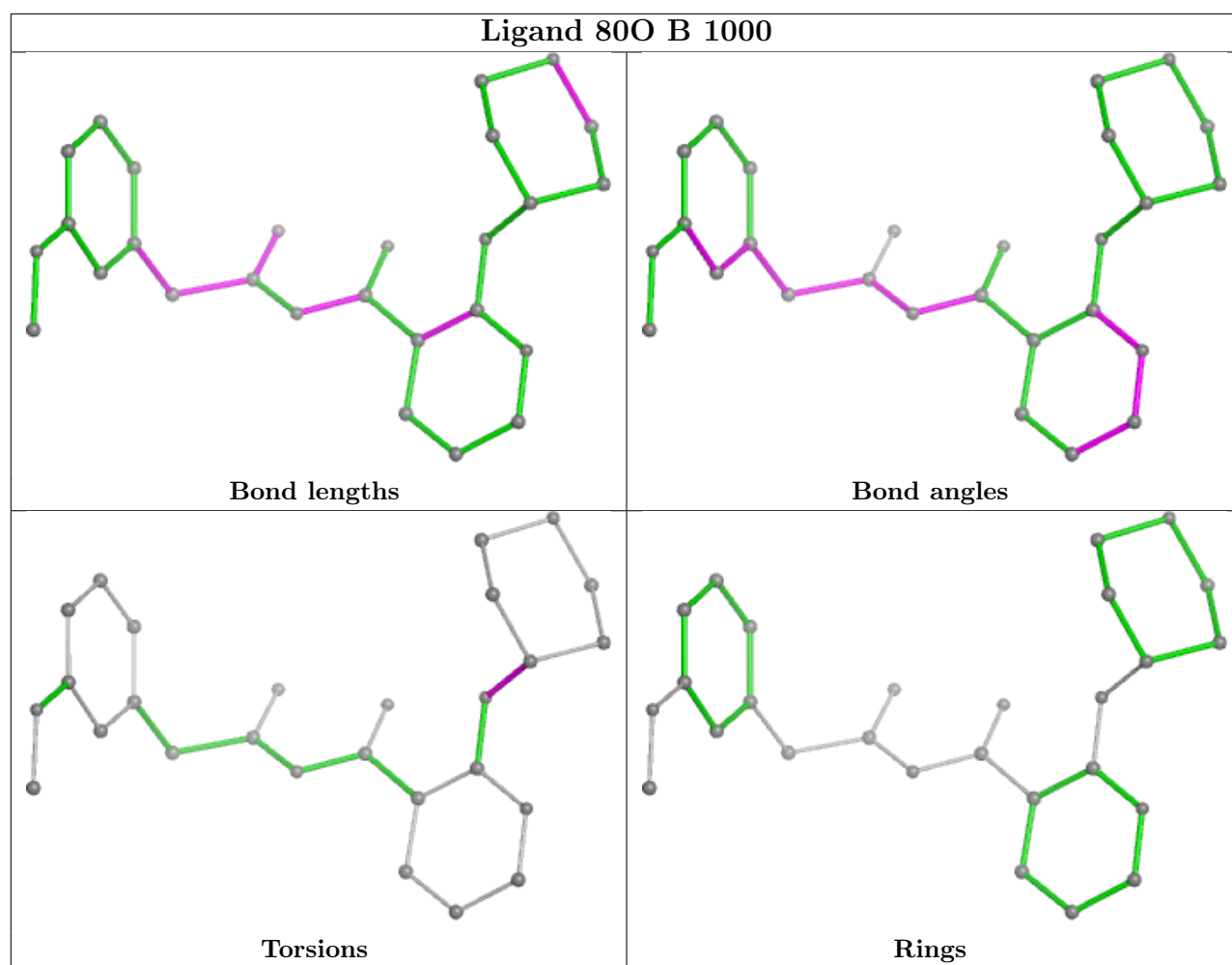
average RMSD is greater than 60 degrees and the minimal RMSD between the ring in question and any Mogul-identified rings is also greater than 60 degrees, then that ring is considered an outlier. The outliers are highlighted in purple. The color gray indicates Mogul did not find sufficient equivalents in the CSD to analyse the geometry.

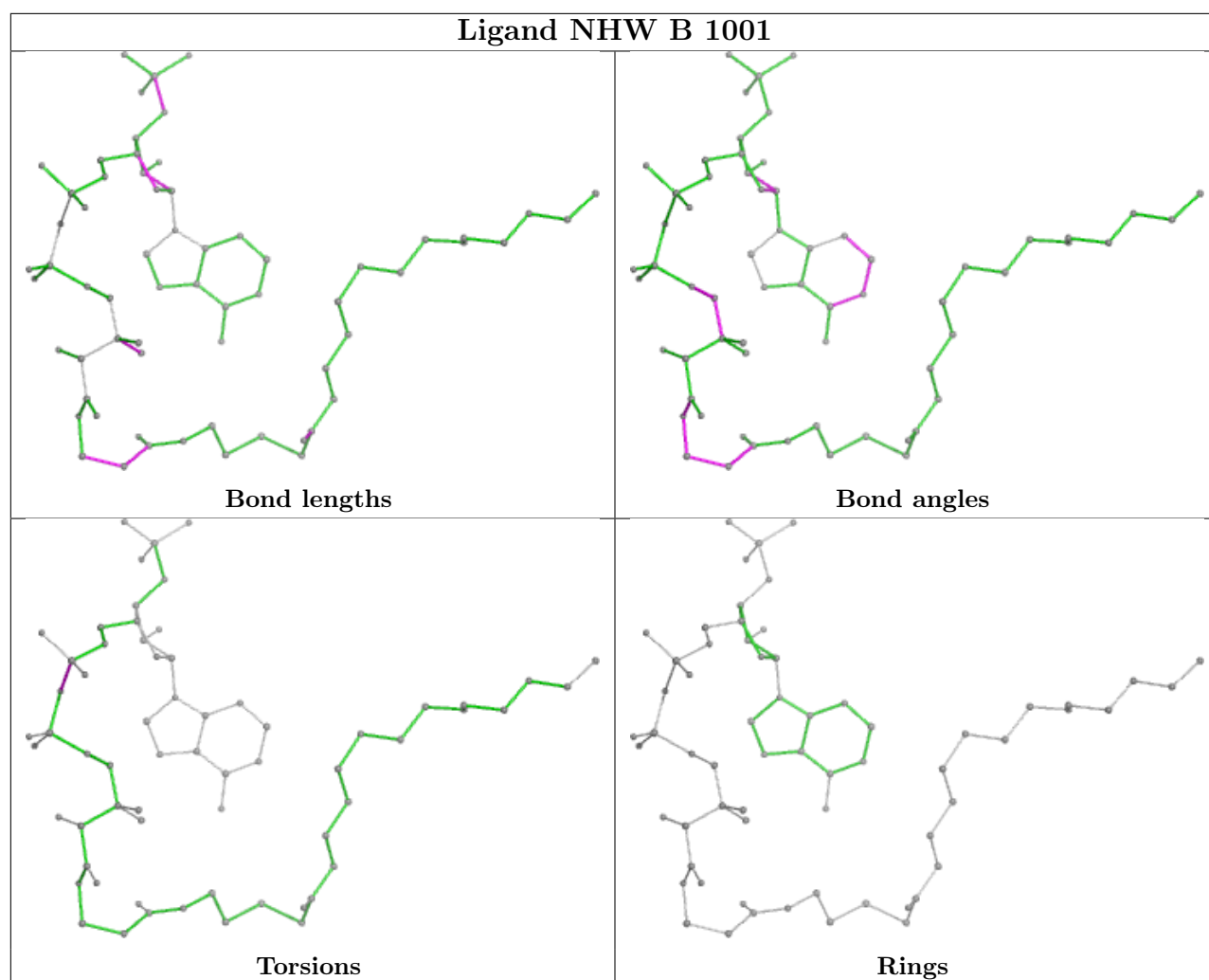












5.7 Other polymers [i](#)

There are no such residues in this entry.

5.8 Polymer linkage issues [i](#)

There are no chain breaks in this entry.

6 Fit of model and data [i](#)

6.1 Protein, DNA and RNA chains [i](#)

In the following table, the column labelled ‘#RSRZ> 2’ contains the number (and percentage) of RSRZ outliers, followed by percent RSRZ outliers for the chain as percentile scores relative to all X-ray entries and entries of similar resolution. The OWAB column contains the minimum, median, 95th percentile and maximum values of the occupancy-weighted average B-factor per residue. The column labelled ‘Q< 0.9’ lists the number of (and percentage) of residues with an average occupancy less than 0.9.

Mol	Chain	Analysed	<RSRZ>	#RSRZ>2	OWAB(Å ²)	Q<0.9
1	A	385/385 (100%)	-0.48	3 (0%) 86 89	6, 10, 24, 42	8 (2%)
1	B	385/385 (100%)	-0.45	4 (1%) 82 85	6, 11, 25, 53	3 (0%)
1	C	372/385 (96%)	-0.45	5 (1%) 77 81	6, 10, 27, 59	3 (0%)
All	All	1142/1155 (98%)	-0.46	12 (1%) 80 84	6, 11, 26, 59	14 (1%)

The worst 5 of 12 RSRZ outliers are listed below:

Mol	Chain	Res	Type	RSRZ
1	C	242	TYR	3.2
1	C	226	PHE	3.1
1	B	39	ILE	2.9
1	B	40[A]	ASN	2.8
1	A	325	ASP	2.7

6.2 Non-standard residues in protein, DNA, RNA chains [i](#)

There are no non-standard protein/DNA/RNA residues in this entry.

6.3 Carbohydrates [i](#)

There are no monosaccharides in this entry.

6.4 Ligands [i](#)

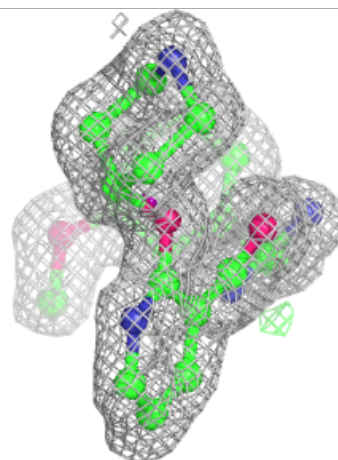
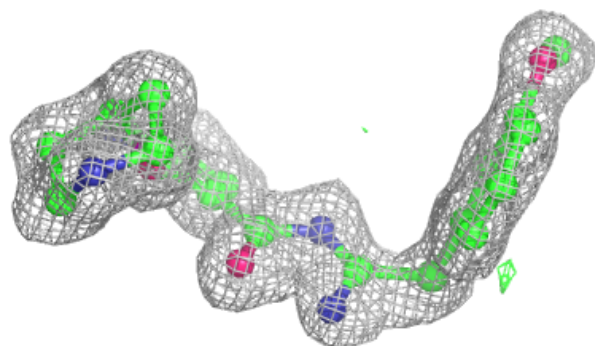
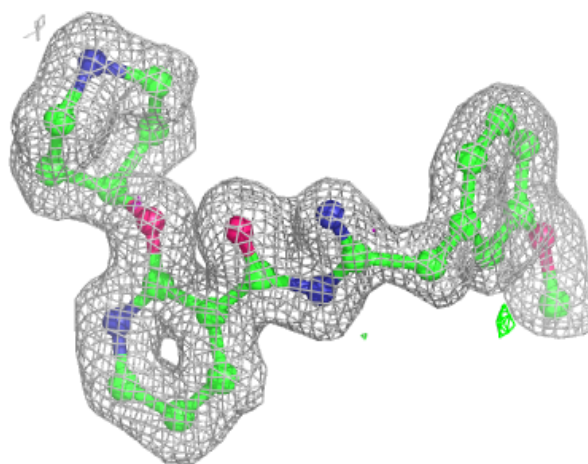
In the following table, the Atoms column lists the number of modelled atoms in the group and the number defined in the chemical component dictionary. The B-factors column lists the minimum, median, 95th percentile and maximum values of B factors of atoms in the group. The column labelled ‘Q< 0.9’ lists the number of atoms with occupancy less than 0.9.

Mol	Type	Chain	Res	Atoms	RSCC	RSR	B-factors(\AA^2)	Q<0.9
7	DMS	B	1416	4/4	0.80	0.19	35,38,39,46	0
7	DMS	A	1417	4/4	0.88	0.13	45,45,53,59	0
4	SO4	B	1411	5/5	0.88	0.20	22,23,26,28	5
6	CL	A	1415	1/1	0.94	0.16	39,39,39,39	0
4	SO4	A	1411	5/5	0.95	0.11	14,17,18,20	5
2	80O	C	1000	27/27	0.97	0.08	8,11,19,22	0
2	80O	A	1000	27/27	0.97	0.06	9,11,15,25	0
7	DMS	B	1415	4/4	0.97	0.09	16,19,19,19	0
2	80O	B	1000	27/27	0.97	0.07	9,12,18,25	0
7	DMS	C	1413	4/4	0.97	0.11	15,19,20,20	0
3	NHW	A	1001	64/64	0.98	0.06	6,9,12,14	0
7	DMS	A	1416	4/4	0.98	0.08	16,19,21,21	0
3	NHW	B	1001	64/64	0.98	0.06	6,9,12,14	0
5	MG	B	1412	1/1	0.99	0.05	17,17,17,17	0
3	NHW	C	1001	64/64	0.99	0.05	5,8,11,14	0
6	CL	B	1414	1/1	0.99	0.05	13,13,13,13	0
5	MG	A	1412	1/1	0.99	0.04	18,18,18,18	0
6	CL	A	1414	1/1	1.00	0.05	13,13,13,13	0
5	MG	C	1411	1/1	1.00	0.05	16,16,16,16	0
6	CL	B	1413	1/1	1.00	0.06	10,10,10,10	0
6	CL	A	1413	1/1	1.00	0.06	9,9,9,9	0
6	CL	C	1412	1/1	1.00	0.05	9,9,9,9	0

The following is a graphical depiction of the model fit to experimental electron density of all instances of the Ligand of Interest. In addition, ligands with molecular weight > 250 and outliers as shown on the geometry validation Tables will also be included. Each fit is shown from different orientation to approximate a three-dimensional view.

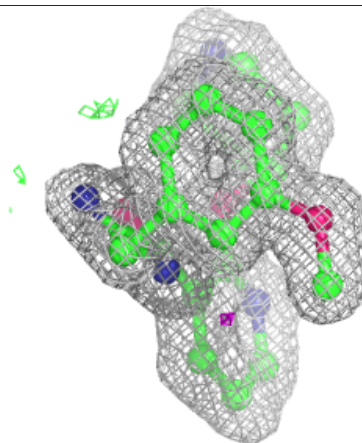
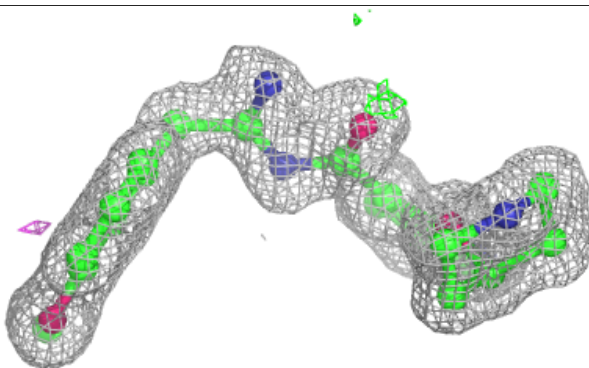
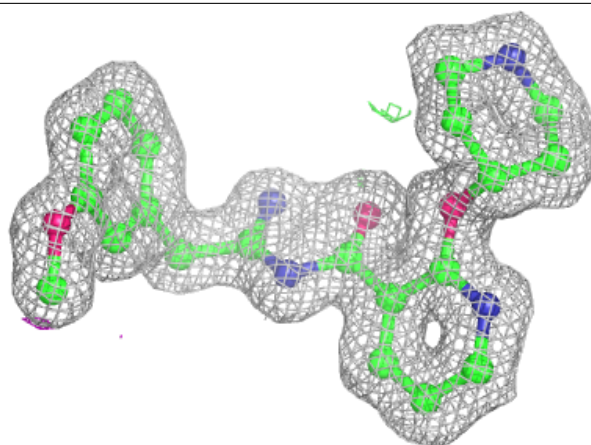
Electron density around 80O C 1000:

$2mF_o-DF_c$ (at 0.7 rmsd) in gray
 mF_o-DF_c (at 3 rmsd) in purple (negative)
and green (positive)



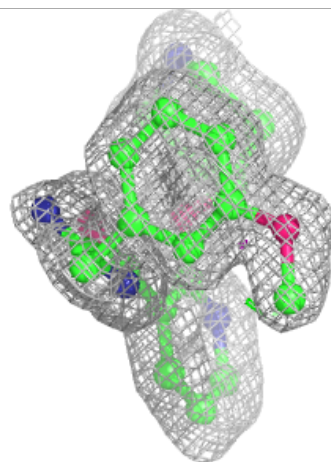
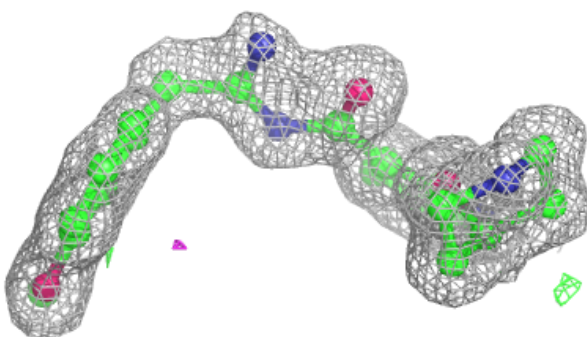
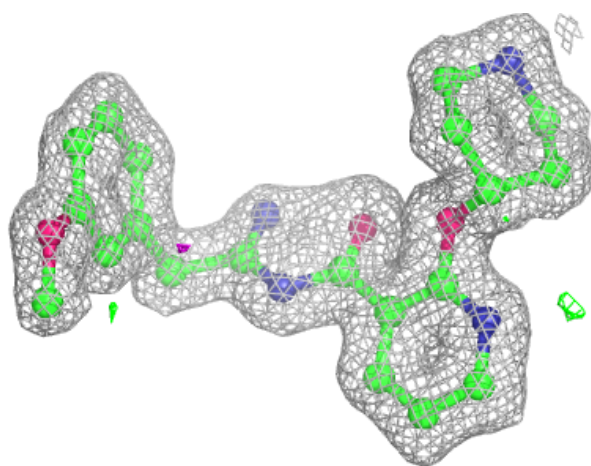
Electron density around 80O A 1000:

$2mF_o-DF_c$ (at 0.7 rmsd) in gray
 mF_o-DF_c (at 3 rmsd) in purple (negative)
and green (positive)



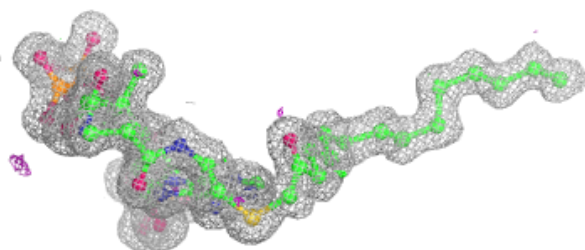
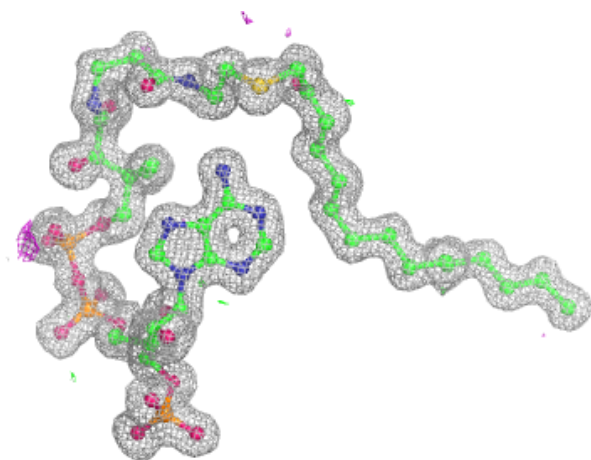
Electron density around 80O B 1000:

$2mF_o-DF_c$ (at 0.7 rmsd) in gray
 mF_o-DF_c (at 3 rmsd) in purple (negative)
and green (positive)



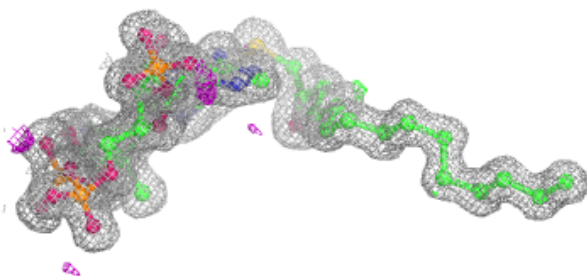
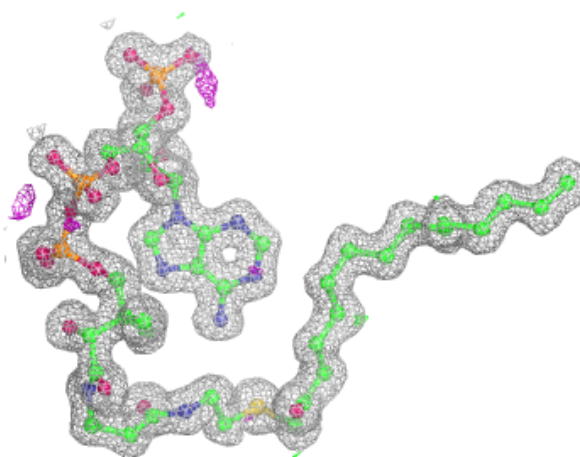
Electron density around NHW A 1001:

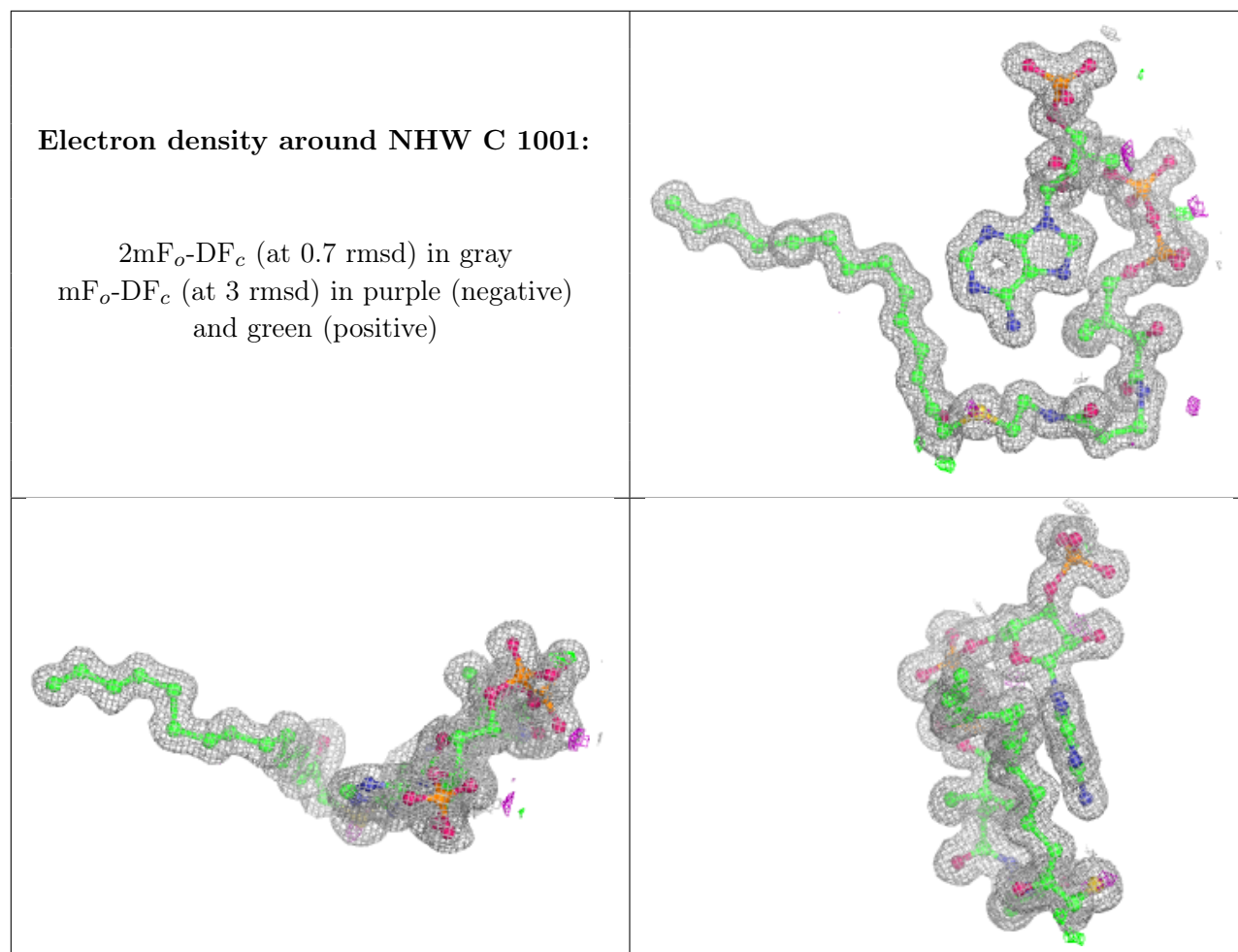
$2mF_o-DF_c$ (at 0.7 rmsd) in gray
 mF_o-DF_c (at 3 rmsd) in purple (negative)
and green (positive)



Electron density around NHW B 1001:

$2mF_o-DF_c$ (at 0.7 rmsd) in gray
 mF_o-DF_c (at 3 rmsd) in purple (negative)
and green (positive)





6.5 Other polymers [i](#)

There are no such residues in this entry.