



Full wwPDB X-ray Structure Validation Report ⓘ

Nov 3, 2024 – 02:10 am GMT

PDB ID : 4UFR
Title : Structure of the ectodomain of LGR5 in complex with R-spondin-2 (Fu1Fu2)
Authors : Zebisch, M.; Jones, E.Y.
Deposited on : 2015-03-18
Resolution : 2.20 Å(reported)

This is a Full wwPDB X-ray Structure Validation Report for a publicly released PDB entry.

We welcome your comments at validation@mail.wwpdb.org

A user guide is available at

<https://www.wwpdb.org/validation/2017/XrayValidationReportHelp>

with specific help available everywhere you see the ⓘ symbol.

The types of validation reports are described at

<http://www.wwpdb.org/validation/2017/FAQs#types>.

The following versions of software and data (see [references ⓘ](#)) were used in the production of this report:

MolProbity : 4.02b-467
Mogul : 1.8.4, CSD as541be (2020)
Xtriage (Phenix) : 1.13
EDS : 3.0
Percentile statistics : 20231227.v01 (using entries in the PDB archive December 27th 2023)
CCP4 : 9.0.003 (Gargrove)
Density-Fitness : 1.0.11
Ideal geometry (proteins) : Engh & Huber (2001)
Ideal geometry (DNA, RNA) : Parkinson et al. (1996)
Validation Pipeline (wwPDB-VP) : 2.39

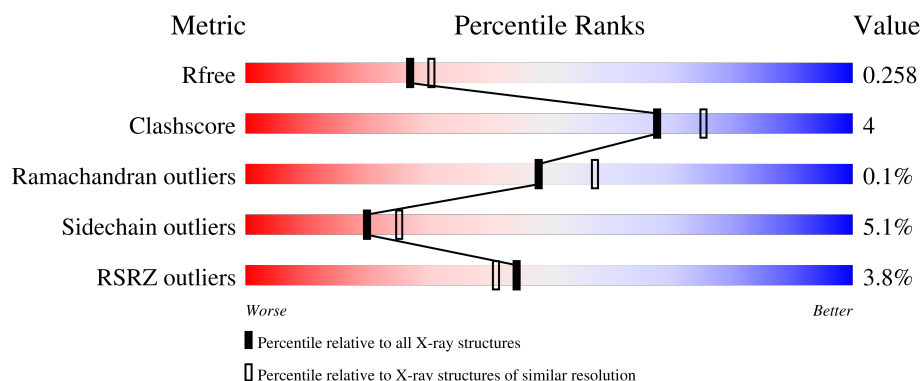
1 Overall quality at a glance

The following experimental techniques were used to determine the structure:

X-RAY DIFFRACTION

The reported resolution of this entry is 2.20 Å.

Percentile scores (ranging between 0-100) for global validation metrics of the entry are shown in the following graphic. The table shows the number of entries on which the scores are based.



Metric	Whole archive (#Entries)	Similar resolution (#Entries, resolution range(Å))
R_{free}	164625	5791 (2.20-2.20)
Clashscore	180529	6634 (2.20-2.20)
Ramachandran outliers	177936	6560 (2.20-2.20)
Sidechain outliers	177891	6561 (2.20-2.20)
RSRZ outliers	164620	5791 (2.20-2.20)

The table below summarises the geometric issues observed across the polymeric chains and their fit to the electron density. The red, orange, yellow and green segments of the lower bar indicate the fraction of residues that contain outliers for ≥ 3 , 2, 1 and 0 types of geometric quality criteria respectively. A grey segment represents the fraction of residues that are not modelled. The numeric value for each fraction is indicated below the corresponding segment, with a dot representing fractions $\leq 5\%$. The upper red bar (where present) indicates the fraction of residues that have poor fit to the electron density. The numeric value is given above the bar.

Mol	Chain	Length	Quality of chain
1	A	484	 3% 83% 11% • 5%
1	C	484	 2% 84% 11% 5%
2	B	120	 8% 71% 14% 15%
2	D	120	 10% 72% 12% • 15%

2 Entry composition

There are 5 unique types of molecules in this entry. The entry contains 8912 atoms, of which 0 are hydrogens and 0 are deuteriums.

In the tables below, the ZeroOcc column contains the number of atoms modelled with zero occupancy, the AltConf column contains the number of residues with at least one atom in alternate conformation and the Trace column contains the number of residues modelled with at most 2 atoms.

- Molecule 1 is a protein called LEUCINE-RICH REPEAT-CONTAINING G-PROTEIN COUPLED RECEPTOR 5.

Mol	Chain	Residues	Atoms					ZeroOcc	AltConf	Trace
1	A	459	Total	C	N	O	S	0	1	0
			3608	2301	622	668	17			
1	C	458	Total	C	N	O	S	0	0	0
			3588	2288	617	667	16			

There are 44 discrepancies between the modelled and reference sequences:

Chain	Residue	Modelled	Actual	Comment	Reference
A	29	GLU	-	expression tag	UNP O75473
A	30	THR	-	expression tag	UNP O75473
A	31	GLY	-	expression tag	UNP O75473
A	488	ASN	-	linker	UNP O75473
A	489	ASN	-	linker	UNP O75473
A	490	GLY	-	linker	UNP O75473
A	491	ASN	-	linker	UNP O75473
A	492	ASN	-	linker	UNP O75473
A	493	GLY	-	linker	UNP O75473
A	494	ASP	-	linker	UNP O75473
A	545	GLY	-	expression tag	UNP O75473
A	546	THR	-	expression tag	UNP O75473
A	547	HIS	-	expression tag	UNP O75473
A	548	HIS	-	expression tag	UNP O75473
A	549	HIS	-	expression tag	UNP O75473
A	550	HIS	-	expression tag	UNP O75473
A	551	HIS	-	expression tag	UNP O75473
A	552	HIS	-	expression tag	UNP O75473
A	553	HIS	-	expression tag	UNP O75473
A	554	HIS	-	expression tag	UNP O75473
A	555	HIS	-	expression tag	UNP O75473
A	556	HIS	-	expression tag	UNP O75473
C	29	GLU	-	expression tag	UNP O75473
C	30	THR	-	expression tag	UNP O75473

Continued on next page...

Continued from previous page...

Chain	Residue	Modelled	Actual	Comment	Reference
C	31	GLY	-	expression tag	UNP O75473
C	488	ASN	-	linker	UNP O75473
C	489	ASN	-	linker	UNP O75473
C	490	GLY	-	linker	UNP O75473
C	491	ASN	-	linker	UNP O75473
C	492	ASN	-	linker	UNP O75473
C	493	GLY	-	linker	UNP O75473
C	494	ASP	-	linker	UNP O75473
C	545	GLY	-	expression tag	UNP O75473
C	546	THR	-	expression tag	UNP O75473
C	547	HIS	-	expression tag	UNP O75473
C	548	HIS	-	expression tag	UNP O75473
C	549	HIS	-	expression tag	UNP O75473
C	550	HIS	-	expression tag	UNP O75473
C	551	HIS	-	expression tag	UNP O75473
C	552	HIS	-	expression tag	UNP O75473
C	553	HIS	-	expression tag	UNP O75473
C	554	HIS	-	expression tag	UNP O75473
C	555	HIS	-	expression tag	UNP O75473
C	556	HIS	-	expression tag	UNP O75473

- Molecule 2 is a protein called R-SPONDIN-2.

Mol	Chain	Residues	Atoms					ZeroOcc	AltConf	Trace
2	B	102	Total	C	N	O	S	0	0	0
			781	477	146	139	19			
2	D	102	Total	C	N	O	S	0	0	0
			751	459	140	135	17			

There are 28 discrepancies between the modelled and reference sequences:

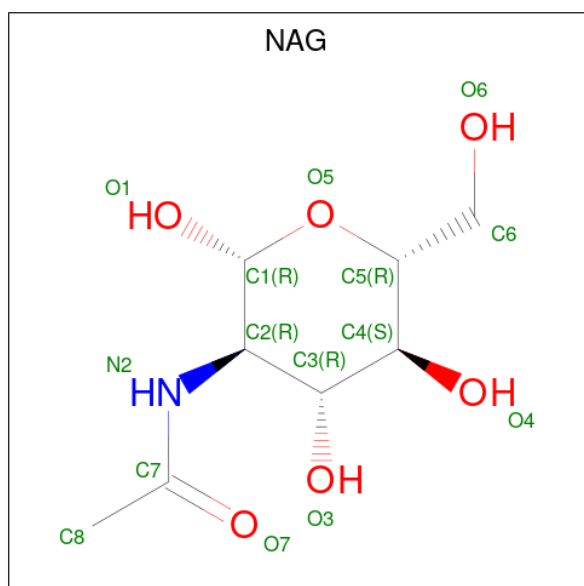
Chain	Residue	Modelled	Actual	Comment	Reference
B	36	GLU	-	expression tag	UNP Q8BFU0
B	37	THR	-	expression tag	UNP Q8BFU0
B	38	GLY	-	expression tag	UNP Q8BFU0
B	145	THR	-	expression tag	UNP Q8BFU0
B	146	HIS	-	expression tag	UNP Q8BFU0
B	147	HIS	-	expression tag	UNP Q8BFU0
B	148	HIS	-	expression tag	UNP Q8BFU0
B	149	HIS	-	expression tag	UNP Q8BFU0
B	150	HIS	-	expression tag	UNP Q8BFU0
B	151	HIS	-	expression tag	UNP Q8BFU0

Continued on next page...

Continued from previous page...

Chain	Residue	Modelled	Actual	Comment	Reference
B	152	HIS	-	expression tag	UNP Q8BFU0
B	153	HIS	-	expression tag	UNP Q8BFU0
B	154	HIS	-	expression tag	UNP Q8BFU0
B	155	HIS	-	expression tag	UNP Q8BFU0
D	36	GLU	-	expression tag	UNP Q8BFU0
D	37	THR	-	expression tag	UNP Q8BFU0
D	38	GLY	-	expression tag	UNP Q8BFU0
D	145	THR	-	expression tag	UNP Q8BFU0
D	146	HIS	-	expression tag	UNP Q8BFU0
D	147	HIS	-	expression tag	UNP Q8BFU0
D	148	HIS	-	expression tag	UNP Q8BFU0
D	149	HIS	-	expression tag	UNP Q8BFU0
D	150	HIS	-	expression tag	UNP Q8BFU0
D	151	HIS	-	expression tag	UNP Q8BFU0
D	152	HIS	-	expression tag	UNP Q8BFU0
D	153	HIS	-	expression tag	UNP Q8BFU0
D	154	HIS	-	expression tag	UNP Q8BFU0
D	155	HIS	-	expression tag	UNP Q8BFU0

- Molecule 3 is 2-acetamido-2-deoxy-beta-D-glucopyranose (three-letter code: NAG) (formula: $C_8H_{15}NO_6$).



Mol	Chain	Residues	Atoms				ZeroOcc	AltConf
3	A	1	Total	C	N	O	0	0
			14	8	1	5		
3	C	1	Total	C	N	O	0	0
			14	8	1	5		

- Molecule 4 is CHLORIDE ION (three-letter code: CL) (formula: Cl).

Mol	Chain	Residues	Atoms		ZeroOcc	AltConf
4	A	3	Total 3	Cl 3	0	0
4	B	1	Total 1	Cl 1	0	0
4	C	1	Total 1	Cl 1	0	0
4	D	1	Total 1	Cl 1	0	0

- Molecule 5 is water.

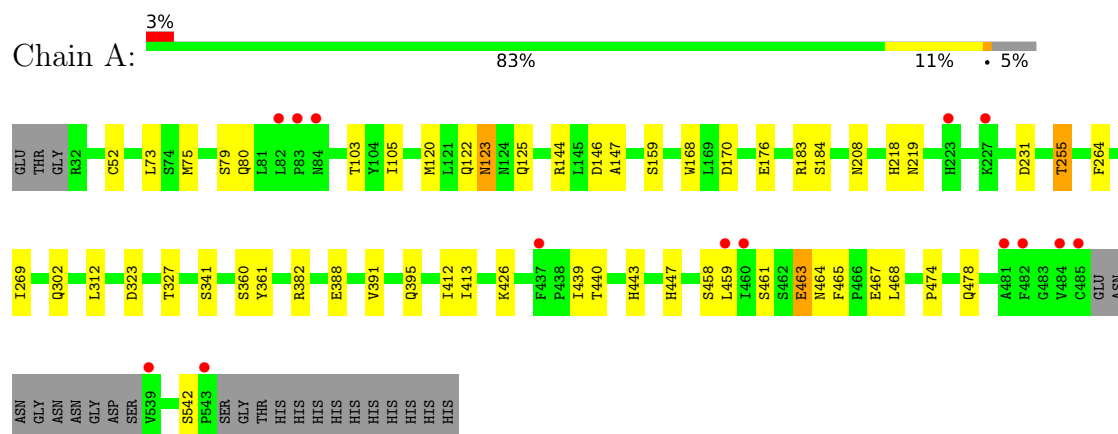
Mol	Chain	Residues	Atoms		ZeroOcc	AltConf
5	A	74	Total 74	O 74	0	0
5	B	1	Total 1	O 1	0	0
5	C	72	Total 72	O 72	0	0
5	D	3	Total 3	O 3	0	0

3 Residue-property plots

These plots are drawn for all protein, RNA, DNA and oligosaccharide chains in the entry. The first graphic for a chain summarises the proportions of the various outlier classes displayed in the second graphic. The second graphic shows the sequence view annotated by issues in geometry and electron density. Residues are color-coded according to the number of geometric quality criteria for which they contain at least one outlier: green = 0, yellow = 1, orange = 2 and red = 3 or more. A red dot above a residue indicates a poor fit to the electron density ($RSRZ > 2$). Stretches of 2 or more consecutive residues without any outlier are shown as a green connector. Residues present in the sample, but not in the model, are shown in grey.

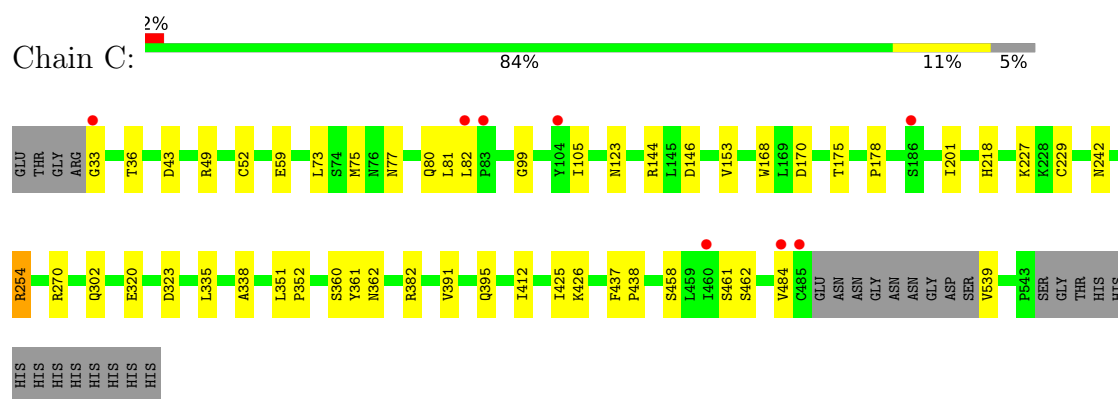
- Molecule 1: LEUCINE-RICH REPEAT-CONTAINING G-PROTEIN COUPLED RECEPTOR

5

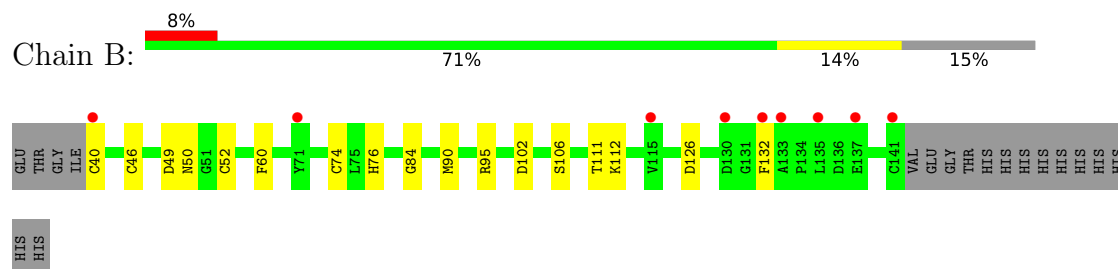


- Molecule 1: LEUCINE-RICH REPEAT-CONTAINING G-PROTEIN COUPLED RECEPTOR

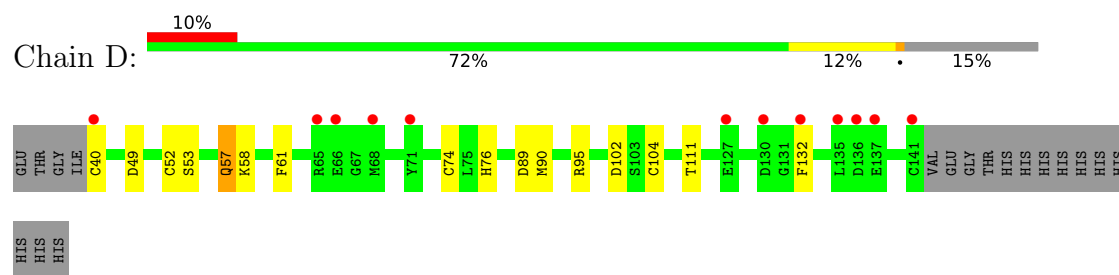
5



- Molecule 2: R-SPONDIN-2



- Molecule 2: R-SPONDIN-2



4 Data and refinement statistics

Property	Value	Source
Space group	C 1 2 1	Depositor
Cell constants a, b, c, α , β , γ	205.15Å 59.78Å 112.21Å 90.00° 99.51° 90.00°	Depositor
Resolution (Å)	110.67 – 2.20 110.67 – 2.20	Depositor EDS
% Data completeness (in resolution range)	90.5 (110.67-2.20) 90.5 (110.67-2.20)	Depositor EDS
R_{merge}	0.12	Depositor
R_{sym}	(Not available)	Depositor
$\langle I/\sigma(I) \rangle$ ¹	1.61 (at 2.20Å)	Xtriage
Refinement program	REFMAC 5.8.0073	Depositor
R, R_{free}	0.208 , 0.262 0.212 , 0.258	Depositor DCC
R_{free} test set	1184 reflections (1.91%)	wwPDB-VP
Wilson B-factor (Å ²)	44.1	Xtriage
Anisotropy	0.360	Xtriage
Bulk solvent k_{sol} (e/Å ³), B_{sol} (Å ²)	0.33 , 38.1	EDS
L-test for twinning ²	$\langle L \rangle = 0.49$, $\langle L^2 \rangle = 0.32$	Xtriage
Estimated twinning fraction	No twinning to report.	Xtriage
F_o, F_c correlation	0.95	EDS
Total number of atoms	8912	wwPDB-VP
Average B, all atoms (Å ²)	60.0	wwPDB-VP

Xtriage's analysis on translational NCS is as follows: *The largest off-origin peak in the Patterson function is 3.71% of the height of the origin peak. No significant pseudotranslation is detected.*

¹Intensities estimated from amplitudes.

²Theoretical values of $\langle |L| \rangle$, $\langle L^2 \rangle$ for acentric reflections are 0.5, 0.333 respectively for untwinned datasets, and 0.375, 0.2 for perfectly twinned datasets.

5 Model quality

5.1 Standard geometry

Bond lengths and bond angles in the following residue types are not validated in this section: CL, NAG

The Z score for a bond length (or angle) is the number of standard deviations the observed value is removed from the expected value. A bond length (or angle) with $|Z| > 5$ is considered an outlier worth inspection. RMSZ is the root-mean-square of all Z scores of the bond lengths (or angles).

Mol	Chain	Bond lengths		Bond angles	
		RMSZ	$\# Z > 5$	RMSZ	$\# Z > 5$
1	A	0.63	0/3691	0.80	3/5024 (0.1%)
1	C	0.69	0/3668	0.81	0/4996
2	B	0.57	0/798	0.79	0/1064
2	D	0.67	1/768 (0.1%)	0.82	1/1029 (0.1%)
All	All	0.65	1/8925 (0.0%)	0.80	4/12113 (0.0%)

Chiral center outliers are detected by calculating the chiral volume of a chiral center and verifying if the center is modelled as a planar moiety or with the opposite hand. A planarity outlier is detected by checking planarity of atoms in a peptide group, atoms in a mainchain group or atoms of a sidechain that are expected to be planar.

Mol	Chain	#Chirality outliers	#Planarity outliers
1	A	0	1
1	C	0	1
All	All	0	2

All (1) bond length outliers are listed below:

Mol	Chain	Res	Type	Atoms	Z	Observed(Å)	Ideal(Å)
2	D	104	CYS	CB-SG	-7.40	1.69	1.82

All (4) bond angle outliers are listed below:

Mol	Chain	Res	Type	Atoms	Z	Observed(°)	Ideal(°)
2	D	104	CYS	CB-CA-C	-9.33	91.74	110.40
1	A	542	SER	C-N-CD	-6.14	107.09	120.60
1	A	183	ARG	NE-CZ-NH2	-5.30	117.65	120.30
1	A	183	ARG	NE-CZ-NH1	5.27	122.93	120.30

There are no chirality outliers.

All (2) planarity outliers are listed below:

Mol	Chain	Res	Type	Group
1	A	463	GLU	Peptide
1	C	33	GLY	Peptide

5.2 Too-close contacts

In the following table, the Non-H and H(model) columns list the number of non-hydrogen atoms and hydrogen atoms in the chain respectively. The H(added) column lists the number of hydrogen atoms added and optimized by MolProbity. The Clashes column lists the number of clashes within the asymmetric unit, whereas Symm-Clashes lists symmetry-related clashes.

Mol	Chain	Non-H	H(model)	H(added)	Clashes	Symm-Clashes
1	A	3608	0	3626	29	0
1	C	3588	0	3593	30	0
2	B	781	0	704	5	0
2	D	751	0	643	4	0
3	A	14	0	13	2	0
3	C	14	0	13	6	0
4	A	3	0	0	0	0
4	B	1	0	0	0	0
4	C	1	0	0	0	0
4	D	1	0	0	0	0
5	A	74	0	0	0	0
5	B	1	0	0	0	0
5	C	72	0	0	0	0
5	D	3	0	0	0	0
All	All	8912	0	8592	60	0

The all-atom clashscore is defined as the number of clashes found per 1000 atoms (including hydrogen atoms). The all-atom clashscore for this structure is 4.

All (60) close contacts within the same asymmetric unit are listed below, sorted by their clash magnitude.

Atom-1	Atom-2	Interatomic distance (Å)	Clash overlap (Å)
1:A:208:ASN:HD21	3:A:1001:NAG:C1	1.02	1.65
1:C:77:ASN:HD21	3:C:1001:NAG:C1	1.08	1.61
1:C:77:ASN:ND2	3:C:1001:NAG:C1	1.92	1.31
1:C:77:ASN:HD21	3:C:1001:NAG:C2	1.79	0.96
1:A:361:TYR:OH	1:C:361:TYR:OH	2.02	0.73
1:C:77:ASN:ND2	3:C:1001:NAG:C2	2.47	0.71

Continued on next page...

Continued from previous page...

Atom-1	Atom-2	Interatomic distance (Å)	Clash overlap (Å)
1:A:361:TYR:HE1	1:C:361:TYR:CE1	2.10	0.69
1:A:361:TYR:CE1	1:C:361:TYR:HE1	2.11	0.68
1:A:208:ASN:CG	3:A:1001:NAG:C1	2.62	0.65
2:B:90:MET:HE3	1:C:458:SER:HA	1.79	0.65
1:A:361:TYR:CE1	1:C:361:TYR:CE1	2.85	0.63
1:A:391:VAL:O	1:A:395:GLN:NE2	2.33	0.62
1:C:77:ASN:CG	3:C:1001:NAG:C1	2.69	0.60
1:C:391:VAL:O	1:C:395:GLN:NE2	2.35	0.60
1:C:302:GLN:NE2	1:C:323:ASP:OD2	2.30	0.59
1:C:75:MET:HG2	2:D:76:HIS:CE1	2.39	0.58
1:C:144:ARG:HG2	1:C:168:TRP:CE3	2.39	0.56
1:A:103:THR:HG22	1:A:125:GLN:HB2	1.87	0.55
1:A:302:GLN:NE2	1:A:323:ASP:OD2	2.33	0.55
1:C:43:ASP:HB2	1:C:49:ARG:HG3	1.89	0.54
1:A:120:MET:HE3	1:A:122:GLN:HE22	1.72	0.54
2:B:52:CYS:SG	2:B:74:CYS:SG	3.05	0.54
1:C:146:ASP:HB3	1:C:170:ASP:OD1	2.07	0.53
1:C:338:ALA:HB3	1:C:362:ASN:OD1	2.08	0.53
2:D:52:CYS:SG	2:D:74:CYS:SG	3.08	0.52
1:C:425:ILE:HG22	1:C:426:LYS:HG3	1.92	0.52
1:A:360:SER:CB	1:A:382:ARG:HG2	2.40	0.51
1:A:144:ARG:HG2	1:A:168:TRP:CE3	2.45	0.51
1:A:218:HIS:HD2	1:A:219:ASN:OD1	1.93	0.50
1:C:351:LEU:N	1:C:352:PRO:CD	2.75	0.50
2:D:57:GLN:HG3	2:D:58:LYS:HG2	1.93	0.50
1:A:465:PHE:HB3	1:A:468:LEU:HD12	1.95	0.48
1:C:99:GLY:HA2	1:C:123:ASN:O	2.14	0.48
1:A:360:SER:HB3	1:A:382:ARG:HG2	1.97	0.47
1:C:201:ILE:HG22	1:C:229:CYS:HB2	1.96	0.47
2:B:60:PHE:CE1	2:B:84:GLY:HA3	2.49	0.47
1:A:474:PRO:HD2	1:A:478:GLN:OE1	2.15	0.47
1:A:426:LYS:HG2	1:A:447:HIS:HB2	1.97	0.46
2:B:40:CYS:N	2:B:46:CYS:SG	2.88	0.46
1:A:459:LEU:HD11	2:D:61:PHE:CZ	2.51	0.45
1:C:52:CYS:HB2	1:C:73:LEU:HD23	1.99	0.45
1:A:52:CYS:HB2	1:A:73:LEU:HD23	1.98	0.45
1:C:77:ASN:ND2	3:C:1001:NAG:N2	2.65	0.45
1:C:227:LYS:HB3	1:C:254:ARG:HH22	1.81	0.44
1:A:75:MET:HG2	2:B:76:HIS:NE2	2.32	0.43
1:A:264:PHE:HD2	1:A:269:ILE:HD12	1.84	0.43
1:A:388:GLU:OE1	1:A:412:ILE:HD11	2.19	0.43

Continued on next page...

Continued from previous page...

Atom-1	Atom-2	Interatomic distance (Å)	Clash overlap (Å)
1:A:439:ILE:HG23	1:A:464:ASN:HB3	2.02	0.42
1:C:360:SER:CB	1:C:382:ARG:HG2	2.49	0.42
1:A:146:ASP:HB3	1:A:170:ASP:OD1	2.20	0.42
1:C:153:VAL:HG21	1:C:178:PRO:HG3	2.02	0.42
1:A:360:SER:HB2	1:A:382:ARG:HG2	2.00	0.41
1:C:335:LEU:C	1:C:335:LEU:HD23	2.39	0.41
1:C:351:LEU:N	1:C:352:PRO:HD3	2.34	0.41
1:A:120:MET:HE3	1:A:122:GLN:NE2	2.36	0.41
1:A:123:ASN:HA	1:A:147:ALA:O	2.21	0.40
1:C:218:HIS:HA	1:C:242:ASN:O	2.21	0.40
1:A:231:ASP:HA	1:A:255:THR:HG21	2.03	0.40
1:A:327:THR:HG22	1:A:327:THR:O	2.21	0.40
1:C:437:PHE:HA	1:C:438:PRO:HD3	1.98	0.40

There are no symmetry-related clashes.

5.3 Torsion angles [i](#)

5.3.1 Protein backbone [i](#)

In the following table, the Percentiles column shows the percent Ramachandran outliers of the chain as a percentile score with respect to all X-ray entries followed by that with respect to entries of similar resolution.

The Analysed column shows the number of residues for which the backbone conformation was analysed, and the total number of residues.

Mol	Chain	Analysed	Favoured	Allowed	Outliers	Percentiles	
1	A	456/484 (94%)	416 (91%)	40 (9%)	0	100	100
1	C	454/484 (94%)	417 (92%)	36 (8%)	1 (0%)	44	52
2	B	100/120 (83%)	90 (90%)	10 (10%)	0	100	100
2	D	100/120 (83%)	90 (90%)	10 (10%)	0	100	100
All	All	1110/1208 (92%)	1013 (91%)	96 (9%)	1 (0%)	48	57

All (1) Ramachandran outliers are listed below:

Mol	Chain	Res	Type
1	C	484	VAL

5.3.2 Protein sidechains ⓘ

In the following table, the Percentiles column shows the percent sidechain outliers of the chain as a percentile score with respect to all X-ray entries followed by that with respect to entries of similar resolution.

The Analysed column shows the number of residues for which the sidechain conformation was analysed, and the total number of residues.

Mol	Chain	Analysed	Rotameric	Outliers	Percentiles	
1	A	417/437 (95%)	400 (96%)	17 (4%)	26	34
1	C	414/437 (95%)	400 (97%)	14 (3%)	32	42
2	B	84/106 (79%)	75 (89%)	9 (11%)	5	5
2	D	76/106 (72%)	66 (87%)	10 (13%)	3	2
All	All	991/1086 (91%)	941 (95%)	50 (5%)	20	26

All (50) residues with a non-rotameric sidechain are listed below:

Mol	Chain	Res	Type
1	A	79	SER
1	A	80	GLN
1	A	105	ILE
1	A	123	ASN
1	A	159	SER
1	A	176	GLU
1	A	184	SER
1	A	255	THR
1	A	312	LEU
1	A	341	SER
1	A	413	ILE
1	A	440	THR
1	A	443	HIS
1	A	458	SER
1	A	461	SER
1	A	463	GLU
1	A	467	GLU
2	B	49	ASP
2	B	50	ASN
2	B	95	ARG
2	B	102	ASP
2	B	106	SER
2	B	111	THR
2	B	112	LYS

Continued on next page...

Continued from previous page...

Mol	Chain	Res	Type
2	B	126	ASP
2	B	132	PHE
1	C	36	THR
1	C	59	GLU
1	C	80	GLN
1	C	81	LEU
1	C	82	LEU
1	C	105	ILE
1	C	175	THR
1	C	254	ARG
1	C	270	ARG
1	C	320	GLU
1	C	412	ILE
1	C	461	SER
1	C	462	SER
1	C	539	VAL
2	D	40	CYS
2	D	49	ASP
2	D	53	SER
2	D	57	GLN
2	D	89	ASP
2	D	90	MET
2	D	95	ARG
2	D	102	ASP
2	D	111	THR
2	D	132	PHE

Sometimes sidechains can be flipped to improve hydrogen bonding and reduce clashes. All (13) such sidechains are listed below:

Mol	Chain	Res	Type
1	A	123	ASN
1	A	128	HIS
1	A	208	ASN
1	A	218	HIS
1	A	219	ASN
1	A	313	ASN
1	A	374	GLN
1	A	457	GLN
1	C	77	ASN
1	C	80	GLN
1	C	349	ASN
1	C	443	HIS

Continued on next page...

Continued from previous page...

Mol	Chain	Res	Type
2	D	56	GLN

5.3.3 RNA [i](#)

There are no RNA molecules in this entry.

5.4 Non-standard residues in protein, DNA, RNA chains [i](#)

There are no non-standard protein/DNA/RNA residues in this entry.

5.5 Carbohydrates [i](#)

There are no oligosaccharides in this entry.

5.6 Ligand geometry [i](#)

Of 8 ligands modelled in this entry, 6 are monoatomic - leaving 2 for Mogul analysis.

In the following table, the Counts columns list the number of bonds (or angles) for which Mogul statistics could be retrieved, the number of bonds (or angles) that are observed in the model and the number of bonds (or angles) that are defined in the Chemical Component Dictionary. The Link column lists molecule types, if any, to which the group is linked. The Z score for a bond length (or angle) is the number of standard deviations the observed value is removed from the expected value. A bond length (or angle) with $|Z| > 2$ is considered an outlier worth inspection. RMSZ is the root-mean-square of all Z scores of the bond lengths (or angles).

Mol	Type	Chain	Res	Link	Bond lengths			Bond angles		
					Counts	RMSZ	$\# Z > 2$	Counts	RMSZ	$\# Z > 2$
3	NAG	C	1001	-	14,14,15	0.74	0	17,19,21	1.75	5 (29%)
3	NAG	A	1001	1	14,14,15	0.93	1 (7%)	17,19,21	1.77	2 (11%)

In the following table, the Chirals column lists the number of chiral outliers, the number of chiral centers analysed, the number of these observed in the model and the number defined in the Chemical Component Dictionary. Similar counts are reported in the Torsion and Rings columns. '-' means no outliers of that kind were identified.

Mol	Type	Chain	Res	Link	Chirals	Torsions	Rings
3	NAG	C	1001	-	-	3/6/23/26	0/1/1/1
3	NAG	A	1001	1	-	0/6/23/26	0/1/1/1

All (1) bond length outliers are listed below:

Mol	Chain	Res	Type	Atoms	Z	Observed(Å)	Ideal(Å)
3	A	1001	NAG	O5-C1	-2.25	1.40	1.43

All (7) bond angle outliers are listed below:

Mol	Chain	Res	Type	Atoms	Z	Observed(°)	Ideal(°)
3	A	1001	NAG	C1-C2-N2	-4.31	103.13	110.49
3	A	1001	NAG	C4-C3-C2	4.21	117.19	111.02
3	C	1001	NAG	C4-C3-C2	-3.29	106.20	111.02
3	C	1001	NAG	C3-C4-C5	3.16	115.88	110.24
3	C	1001	NAG	O5-C5-C4	2.89	117.86	110.83
3	C	1001	NAG	C1-O5-C5	2.53	115.62	112.19
3	C	1001	NAG	O5-C1-C2	-2.12	107.95	111.29

There are no chirality outliers.

All (3) torsion outliers are listed below:

Mol	Chain	Res	Type	Atoms
3	C	1001	NAG	C4-C5-C6-O6
3	C	1001	NAG	O5-C5-C6-O6
3	C	1001	NAG	C1-C2-N2-C7

There are no ring outliers.

2 monomers are involved in 8 short contacts:

Mol	Chain	Res	Type	Clashes	Symm-Clashes
3	C	1001	NAG	6	0
3	A	1001	NAG	2	0

5.7 Other polymers [i](#)

There are no such residues in this entry.

5.8 Polymer linkage issues [i](#)

There are no chain breaks in this entry.

6 Fit of model and data

6.1 Protein, DNA and RNA chains

In the following table, the column labelled ‘#RSRZ > 2’ contains the number (and percentage) of RSRZ outliers, followed by percent RSRZ outliers for the chain as percentile scores relative to all X-ray entries and entries of similar resolution. The OWAB column contains the minimum, median, 95th percentile and maximum values of the occupancy-weighted average B-factor per residue. The column labelled ‘Q < 0.9’ lists the number of (and percentage) of residues with an average occupancy less than 0.9.

Mol	Chain	Analysed	<RSRZ>	#RSRZ>2	OWAB(Å ²)	Q<0.9
1	A	459/484 (94%)	-0.01	14 (3%) 51 48	34, 53, 87, 126	1 (0%)
1	C	458/484 (94%)	-0.09	8 (1%) 69 65	35, 51, 85, 118	0
2	B	102/120 (85%)	0.91	9 (8%) 17 15	42, 86, 135, 149	0
2	D	102/120 (85%)	0.70	12 (11%) 10 8	41, 80, 135, 150	0
All	All	1121/1208 (92%)	0.10	43 (3%) 44 41	34, 54, 111, 150	1 (0%)

All (43) RSRZ outliers are listed below:

Mol	Chain	Res	Type	RSRZ
2	B	132	PHE	4.4
2	B	130	ASP	3.5
2	D	132	PHE	3.5
1	A	82	LEU	3.3
1	C	82	LEU	3.3
2	B	141	CYS	3.2
1	A	84	ASN	3.2
1	A	83	PRO	3.2
1	A	437	PHE	3.1
2	D	137	GLU	3.0
1	A	223	HIS	2.9
2	D	71	TYR	2.9
1	A	227[A]	LYS	2.8
1	A	481	ALA	2.7
1	A	539	VAL	2.7
1	A	460	ILE	2.6
1	A	485	CYS	2.6
1	C	83	PRO	2.6
1	A	484	VAL	2.6
1	C	33	GLY	2.5
1	C	484	VAL	2.5

Continued on next page...

Continued from previous page...

Mol	Chain	Res	Type	RSRZ
2	B	135	LEU	2.5
1	A	482	PHE	2.4
2	B	115	VAL	2.4
2	D	127	GLU	2.4
2	D	141	CYS	2.4
2	D	136	ASP	2.3
2	D	65	ARG	2.3
2	B	40	CYS	2.3
2	B	71	TYR	2.3
2	D	68	MET	2.3
1	A	459	LEU	2.2
2	B	133	ALA	2.1
1	C	104	TYR	2.1
2	B	137	GLU	2.1
1	C	186	SER	2.1
1	C	460	ILE	2.1
1	C	485	CYS	2.1
2	D	66	GLU	2.1
2	D	40	CYS	2.1
2	D	135	LEU	2.0
2	D	130	ASP	2.0
1	A	543	PRO	2.0

6.2 Non-standard residues in protein, DNA, RNA chains [i](#)

There are no non-standard protein/DNA/RNA residues in this entry.

6.3 Carbohydrates [i](#)

There are no monosaccharides in this entry.

6.4 Ligands [i](#)

In the following table, the Atoms column lists the number of modelled atoms in the group and the number defined in the chemical component dictionary. The B-factors column lists the minimum, median, 95th percentile and maximum values of B factors of atoms in the group. The column labelled 'Q< 0.9' lists the number of atoms with occupancy less than 0.9.

Mol	Type	Chain	Res	Atoms	RSCC	RSR	B-factors(Å ²)	Q<0.9
3	NAG	C	1001	14/15	0.74	0.13	106,112,122,127	0

Continued on next page...

Continued from previous page...

Mol	Type	Chain	Res	Atoms	RSCC	RSR	B-factors(\AA^2)	Q<0.9
3	NAG	A	1001	14/15	0.79	0.16	79,84,90,90	0
4	CL	A	1547	1/1	0.92	0.12	84,84,84,84	0
4	CL	A	1545	1/1	0.93	0.19	59,59,59,59	0
4	CL	D	1142	1/1	0.93	0.18	59,59,59,59	0
4	CL	B	1142	1/1	0.96	0.19	61,61,61,61	0
4	CL	C	1545	1/1	0.96	0.22	53,53,53,53	0
4	CL	A	1546	1/1	0.96	0.15	57,57,57,57	0

6.5 Other polymers [i](#)

There are no such residues in this entry.