



Full wwPDB EM Validation Report ⓘ

May 5, 2025 – 11:04 PM EDT

PDB ID : 6U5O / pdb_00006u5o
EMDB ID : EMD-20651
Title : Structure of the Human Metapneumovirus Polymerase bound to the phospho-protein tetramer
Authors : Pan, J.; Qian, X.; Lattmann, S.; Sahili, A.E.; Yeo, T.H.; Kalocsay, M.; Fearn, R.; Lescar, J.
Deposited on : 2019-08-28
Resolution : 3.70 Å(reported)

This is a Full wwPDB EM Validation Report for a publicly released PDB entry.

We welcome your comments at validation@mail.wwpdb.org

A user guide is available at

<https://www.wwpdb.org/validation/2017/EMValidationReportHelp>
with specific help available everywhere you see the ⓘ symbol.

The types of validation reports are described at

<http://www.wwpdb.org/validation/2017/FAQs#types>.

The following versions of software and data (see [references ⓘ](#)) were used in the production of this report:

EMDB validation analysis : 0.0.1.dev118
MolProbity : 4-5-2 with Phenix2.0rc1
Percentile statistics : 20231227.v01 (using entries in the PDB archive December 27th 2023)
MapQ : 1.9.13
Ideal geometry (proteins) : Engh & Huber (2001)
Ideal geometry (DNA, RNA) : Parkinson et al. (1996)
Validation Pipeline (wwPDB-VP) : 2.43.1

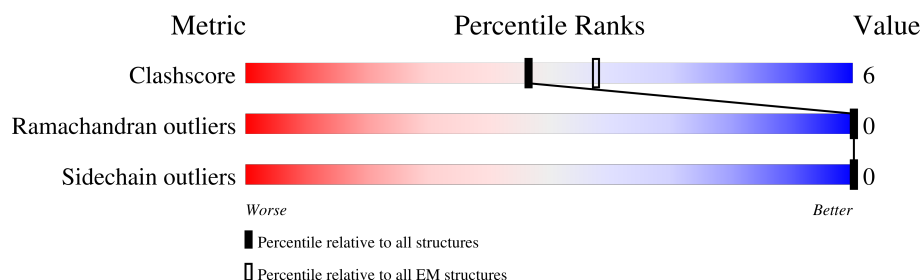
1 Overall quality at a glance

The following experimental techniques were used to determine the structure:

ELECTRON MICROSCOPY

The reported resolution of this entry is 3.70 Å.

Percentile scores (ranging between 0-100) for global validation metrics of the entry are shown in the following graphic. The table shows the number of entries on which the scores are based.



Metric	Whole archive (#Entries)	EM structures (#Entries)
Clashscore	210492	15764
Ramachandran outliers	207382	16835
Sidechain outliers	206894	16415

The table below summarises the geometric issues observed across the polymeric chains and their fit to the map. The red, orange, yellow and green segments of the bar indicate the fraction of residues that contain outliers for ≥ 3 , 2, 1 and 0 types of geometric quality criteria respectively. A grey segment represents the fraction of residues that are not modelled. The numeric value for each fraction is indicated below the corresponding segment, with a dot representing fractions $\leq 5\%$. The upper red bar (where present) indicates the fraction of residues that have poor fit to the EM map (all-atom inclusion $< 40\%$). The numeric value is given above the bar.

Mol	Chain	Length	Quality of chain
1	L	2030	
2	P	319	
2	Q	319	
2	R	319	
2	S	319	

2 Entry composition

There are 2 unique types of molecules in this entry. The entry contains 26316 atoms, of which 13339 are hydrogens and 0 are deuteriums.

In the tables below, the AltConf column contains the number of residues with at least one atom in alternate conformation and the Trace column contains the number of residues modelled with at most 2 atoms.

- Molecule 1 is a protein called RNA-directed RNA polymerase L.

Mol	Chain	Residues	Atoms						AltConf	Trace
1	L	1354	Total	C	H	N	O	S	0	0
			22107	6984	11170	1874	2020	59		

There are 25 discrepancies between the modelled and reference sequences:

Chain	Residue	Modelled	Actual	Comment	Reference
L	-24	MET	-	initiating methionine	UNP Q6WB93
L	-23	GLY	-	expression tag	UNP Q6WB93
L	-22	TRP	-	expression tag	UNP Q6WB93
L	-21	SER	-	expression tag	UNP Q6WB93
L	-20	HIS	-	expression tag	UNP Q6WB93
L	-19	PRO	-	expression tag	UNP Q6WB93
L	-18	GLN	-	expression tag	UNP Q6WB93
L	-17	PHE	-	expression tag	UNP Q6WB93
L	-16	GLU	-	expression tag	UNP Q6WB93
L	-15	LYS	-	expression tag	UNP Q6WB93
L	-14	SER	-	expression tag	UNP Q6WB93
L	-13	SER	-	expression tag	UNP Q6WB93
L	-12	GLY	-	expression tag	UNP Q6WB93
L	-11	VAL	-	expression tag	UNP Q6WB93
L	-10	ASP	-	expression tag	UNP Q6WB93
L	-9	LEU	-	expression tag	UNP Q6WB93
L	-8	GLY	-	expression tag	UNP Q6WB93
L	-7	THR	-	expression tag	UNP Q6WB93
L	-6	GLU	-	expression tag	UNP Q6WB93
L	-5	ASN	-	expression tag	UNP Q6WB93
L	-4	LEU	-	expression tag	UNP Q6WB93
L	-3	TYR	-	expression tag	UNP Q6WB93
L	-2	PHE	-	expression tag	UNP Q6WB93
L	-1	GLN	-	expression tag	UNP Q6WB93
L	0	SER	-	expression tag	UNP Q6WB93

- Molecule 2 is a protein called Phosphoprotein.

Mol	Chain	Residues	Atoms						AltConf	Trace
2	P	98	Total	C	H	N	O	S	0	0
			1531	459	785	130	152	5		
2	Q	66	Total	C	H	N	O	S	0	0
			1022	308	525	86	99	4		
2	R	52	Total	C	H	N	O	S	0	0
			806	242	416	69	77	2		
2	S	53	Total	C	H	N	O	S	0	0
			850	255	443	72	78	2		

There are 100 discrepancies between the modelled and reference sequences:

Chain	Residue	Modelled	Actual	Comment	Reference
P	-24	MET	-	initiating methionine	UNP Q8B9Q8
P	-23	GLY	-	expression tag	UNP Q8B9Q8
P	-22	HIS	-	expression tag	UNP Q8B9Q8
P	-21	HIS	-	expression tag	UNP Q8B9Q8
P	-20	HIS	-	expression tag	UNP Q8B9Q8
P	-19	HIS	-	expression tag	UNP Q8B9Q8
P	-18	HIS	-	expression tag	UNP Q8B9Q8
P	-17	HIS	-	expression tag	UNP Q8B9Q8
P	-16	HIS	-	expression tag	UNP Q8B9Q8
P	-15	HIS	-	expression tag	UNP Q8B9Q8
P	-14	SER	-	expression tag	UNP Q8B9Q8
P	-13	SER	-	expression tag	UNP Q8B9Q8
P	-12	GLY	-	expression tag	UNP Q8B9Q8
P	-11	VAL	-	expression tag	UNP Q8B9Q8
P	-10	ASP	-	expression tag	UNP Q8B9Q8
P	-9	LEU	-	expression tag	UNP Q8B9Q8
P	-8	GLY	-	expression tag	UNP Q8B9Q8
P	-7	THR	-	expression tag	UNP Q8B9Q8
P	-6	GLU	-	expression tag	UNP Q8B9Q8
P	-5	ASN	-	expression tag	UNP Q8B9Q8
P	-4	LEU	-	expression tag	UNP Q8B9Q8
P	-3	TYR	-	expression tag	UNP Q8B9Q8
P	-2	PHE	-	expression tag	UNP Q8B9Q8
P	-1	GLN	-	expression tag	UNP Q8B9Q8
P	0	SER	-	expression tag	UNP Q8B9Q8
Q	-24	MET	-	initiating methionine	UNP Q8B9Q8
Q	-23	GLY	-	expression tag	UNP Q8B9Q8
Q	-22	HIS	-	expression tag	UNP Q8B9Q8
Q	-21	HIS	-	expression tag	UNP Q8B9Q8
Q	-20	HIS	-	expression tag	UNP Q8B9Q8
Q	-19	HIS	-	expression tag	UNP Q8B9Q8

Continued on next page...

Continued from previous page...

Chain	Residue	Modelled	Actual	Comment	Reference
Q	-18	HIS	-	expression tag	UNP Q8B9Q8
Q	-17	HIS	-	expression tag	UNP Q8B9Q8
Q	-16	HIS	-	expression tag	UNP Q8B9Q8
Q	-15	HIS	-	expression tag	UNP Q8B9Q8
Q	-14	SER	-	expression tag	UNP Q8B9Q8
Q	-13	SER	-	expression tag	UNP Q8B9Q8
Q	-12	GLY	-	expression tag	UNP Q8B9Q8
Q	-11	VAL	-	expression tag	UNP Q8B9Q8
Q	-10	ASP	-	expression tag	UNP Q8B9Q8
Q	-9	LEU	-	expression tag	UNP Q8B9Q8
Q	-8	GLY	-	expression tag	UNP Q8B9Q8
Q	-7	THR	-	expression tag	UNP Q8B9Q8
Q	-6	GLU	-	expression tag	UNP Q8B9Q8
Q	-5	ASN	-	expression tag	UNP Q8B9Q8
Q	-4	LEU	-	expression tag	UNP Q8B9Q8
Q	-3	TYR	-	expression tag	UNP Q8B9Q8
Q	-2	PHE	-	expression tag	UNP Q8B9Q8
Q	-1	GLN	-	expression tag	UNP Q8B9Q8
Q	0	SER	-	expression tag	UNP Q8B9Q8
R	-24	MET	-	initiating methionine	UNP Q8B9Q8
R	-23	GLY	-	expression tag	UNP Q8B9Q8
R	-22	HIS	-	expression tag	UNP Q8B9Q8
R	-21	HIS	-	expression tag	UNP Q8B9Q8
R	-20	HIS	-	expression tag	UNP Q8B9Q8
R	-19	HIS	-	expression tag	UNP Q8B9Q8
R	-18	HIS	-	expression tag	UNP Q8B9Q8
R	-17	HIS	-	expression tag	UNP Q8B9Q8
R	-16	HIS	-	expression tag	UNP Q8B9Q8
R	-15	HIS	-	expression tag	UNP Q8B9Q8
R	-14	SER	-	expression tag	UNP Q8B9Q8
R	-13	SER	-	expression tag	UNP Q8B9Q8
R	-12	GLY	-	expression tag	UNP Q8B9Q8
R	-11	VAL	-	expression tag	UNP Q8B9Q8
R	-10	ASP	-	expression tag	UNP Q8B9Q8
R	-9	LEU	-	expression tag	UNP Q8B9Q8
R	-8	GLY	-	expression tag	UNP Q8B9Q8
R	-7	THR	-	expression tag	UNP Q8B9Q8
R	-6	GLU	-	expression tag	UNP Q8B9Q8
R	-5	ASN	-	expression tag	UNP Q8B9Q8
R	-4	LEU	-	expression tag	UNP Q8B9Q8
R	-3	TYR	-	expression tag	UNP Q8B9Q8
R	-2	PHE	-	expression tag	UNP Q8B9Q8

Continued on next page...

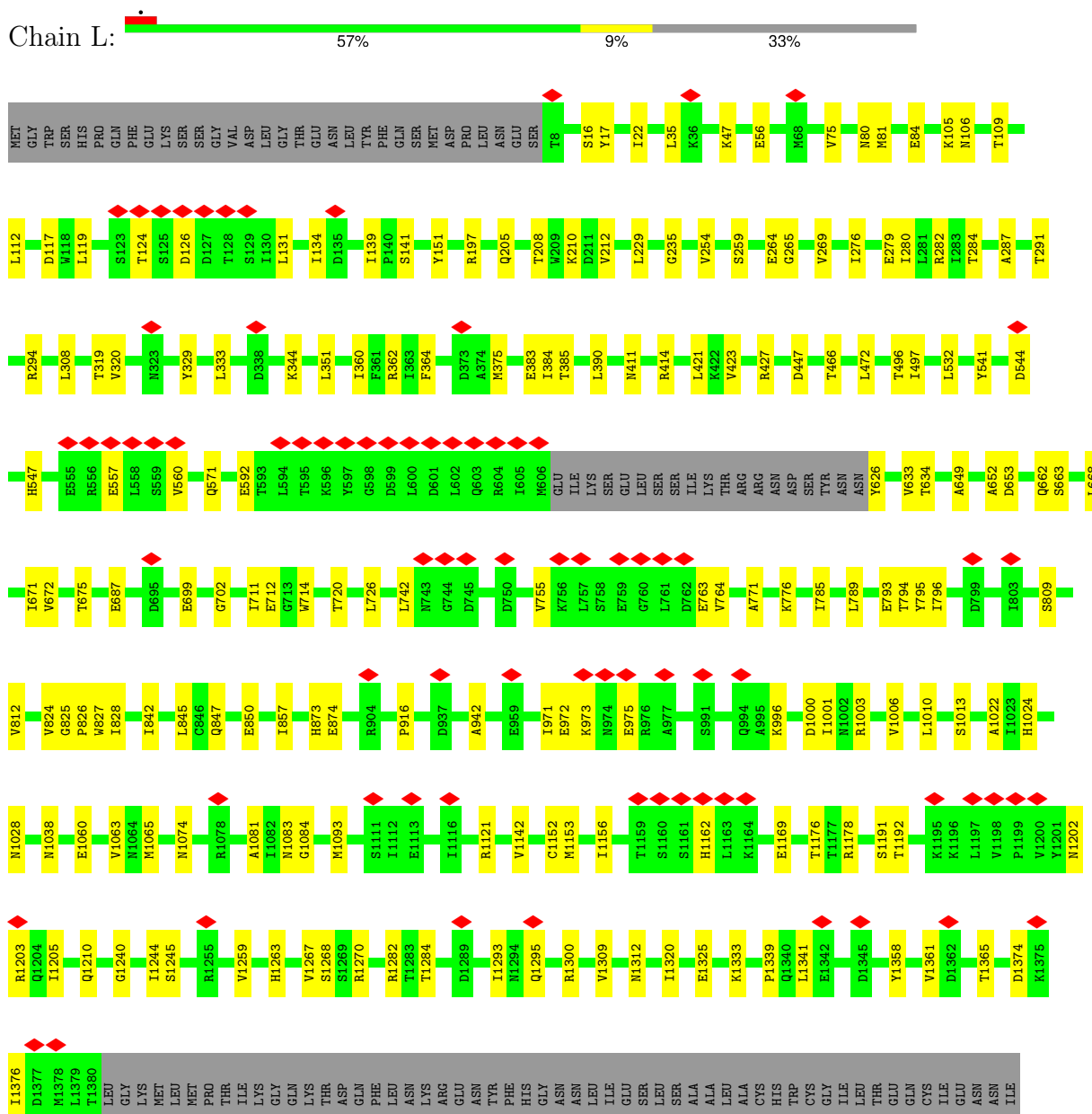
Continued from previous page...

Chain	Residue	Modelled	Actual	Comment	Reference
R	-1	GLN	-	expression tag	UNP Q8B9Q8
R	0	SER	-	expression tag	UNP Q8B9Q8
S	-24	MET	-	initiating methionine	UNP Q8B9Q8
S	-23	GLY	-	expression tag	UNP Q8B9Q8
S	-22	HIS	-	expression tag	UNP Q8B9Q8
S	-21	HIS	-	expression tag	UNP Q8B9Q8
S	-20	HIS	-	expression tag	UNP Q8B9Q8
S	-19	HIS	-	expression tag	UNP Q8B9Q8
S	-18	HIS	-	expression tag	UNP Q8B9Q8
S	-17	HIS	-	expression tag	UNP Q8B9Q8
S	-16	HIS	-	expression tag	UNP Q8B9Q8
S	-15	HIS	-	expression tag	UNP Q8B9Q8
S	-14	SER	-	expression tag	UNP Q8B9Q8
S	-13	SER	-	expression tag	UNP Q8B9Q8
S	-12	GLY	-	expression tag	UNP Q8B9Q8
S	-11	VAL	-	expression tag	UNP Q8B9Q8
S	-10	ASP	-	expression tag	UNP Q8B9Q8
S	-9	LEU	-	expression tag	UNP Q8B9Q8
S	-8	GLY	-	expression tag	UNP Q8B9Q8
S	-7	THR	-	expression tag	UNP Q8B9Q8
S	-6	GLU	-	expression tag	UNP Q8B9Q8
S	-5	ASN	-	expression tag	UNP Q8B9Q8
S	-4	LEU	-	expression tag	UNP Q8B9Q8
S	-3	TYR	-	expression tag	UNP Q8B9Q8
S	-2	PHE	-	expression tag	UNP Q8B9Q8
S	-1	GLN	-	expression tag	UNP Q8B9Q8
S	0	SER	-	expression tag	UNP Q8B9Q8

3 Residue-property plots

These plots are drawn for all protein, RNA, DNA and oligosaccharide chains in the entry. The first graphic for a chain summarises the proportions of the various outlier classes displayed in the second graphic. The second graphic shows the sequence view annotated by issues in geometry and atom inclusion in map density. Residues are color-coded according to the number of geometric quality criteria for which they contain at least one outlier: green = 0, yellow = 1, orange = 2 and red = 3 or more. A red diamond above a residue indicates a poor fit to the EM map for this residue (all-atom inclusion < 40%). Stretches of 2 or more consecutive residues without any outlier are shown as a green connector. Residues present in the sample, but not in the model, are shown in grey.

• Molecule 1: RNA-directed RNA polymerase L



[illegible]

- Molecule 2: Phosphoprotein

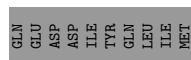
Chain P: 26% 5% 69%

[illegible]

- Molecule 2: Phosphoprotein

Chain Q: 17% 79%

MET	GLY	HIS	HIS	HIS	HIS	HIS	HIS	SER	SER	GLY	VAL	ASP	LEU	THR	GLU	ASN	PHE	TYR	GLN	SER	SER	SER	PHE	PRO	GLU	GLY	LYS	ASP	ILE	LEU	ALA	LEU	PHE	TRP	MET	GLY	ASN	GLU	GLY	ALA	ALA	LYS	LEU	LEU	ALA	GLU	GLU	ALA	PHE	GLN	SER	LYS	LEU	ARG	LYS	PRO	SER	HIS	LYS	ARG	SER
GLN	SER	ILE	ILE	GLY	GLU	LYS	VAL	ASN	THR	THR	THR	LEU	LEU	THR	PRO	THR	ILE	ILE	THR	THR	THR	THR	ILE	LEU	SER	GLU	PRO	LYS	LEU	LEU	ALA	TRP	THR	ASP	LYS	GLY	GLY	ALA	ALA	ILE	LYS	GLU	THR	GLU	ALA	ALA	LYS	ILE	THR	ILE	LYS	VAL	MET	ASP	PRO	ILE	GLU	GLU	GLU		



4 Experimental information

Property	Value	Source
EM reconstruction method	SINGLE PARTICLE	Depositor
Imposed symmetry	POINT, C1	Depositor
Number of particles used	302346	Depositor
Resolution determination method	FSC 0.143 CUT-OFF	Depositor
CTF correction method	NONE	Depositor
Microscope	FEI POLARA 300	Depositor
Voltage (kV)	300	Depositor
Electron dose ($e^-/\text{\AA}^2$)	1.2	Depositor
Minimum defocus (nm)	1500	Depositor
Maximum defocus (nm)	3000	Depositor
Magnification	40323	Depositor
Image detector	GATAN K2 SUMMIT (4k x 4k)	Depositor
Maximum map value	0.391	Depositor
Minimum map value	-0.254	Depositor
Average map value	0.001	Depositor
Map value standard deviation	0.030	Depositor
Recommended contour level	0.04	Depositor
Map size (\AA)	119.04, 119.04, 119.04	wwPDB
Map dimensions	96, 96, 96	wwPDB
Map angles ($^\circ$)	90.0, 90.0, 90.0	wwPDB
Pixel spacing (\AA)	1.24, 1.24, 1.24	Depositor

5 Model quality [i](#)

5.1 Standard geometry [i](#)

The Z score for a bond length (or angle) is the number of standard deviations the observed value is removed from the expected value. A bond length (or angle) with $|Z| > 5$ is considered an outlier worth inspection. RMSZ is the root-mean-square of all Z scores of the bond lengths (or angles).

Mol	Chain	Bond lengths		Bond angles	
		RMSZ	$\# Z > 5$	RMSZ	$\# Z > 5$
1	L	0.21	0/11147	0.47	0/15062
2	P	0.23	0/746	0.50	0/994
2	Q	0.20	0/497	0.50	0/663
2	R	0.19	0/390	0.43	0/523
2	S	0.22	0/405	0.46	0/536
All	All	0.21	0/13185	0.47	0/17778

There are no bond length outliers.

There are no bond angle outliers.

There are no chirality outliers.

There are no planarity outliers.

5.2 Too-close contacts [i](#)

In the following table, the Non-H and H(model) columns list the number of non-hydrogen atoms and hydrogen atoms in the chain respectively. The H(added) column lists the number of hydrogen atoms added and optimized by MolProbity. The Clashes column lists the number of clashes within the asymmetric unit, whereas Symm-Clashes lists symmetry-related clashes.

Mol	Chain	Non-H	H(model)	H(added)	Clashes	Symm-Clashes
1	L	10937	11170	11170	132	0
2	P	746	785	785	16	0
2	Q	497	525	525	13	0
2	R	390	416	416	8	0
2	S	407	443	443	6	0
All	All	12977	13339	13339	154	0

The all-atom clashscore is defined as the number of clashes found per 1000 atoms (including hydrogen atoms). The all-atom clashscore for this structure is 6.

All (154) close contacts within the same asymmetric unit are listed below, sorted by their clash magnitude.

Atom-1	Atom-2	Interatomic distance (Å)	Clash overlap (Å)
1:L:117:ASP:OD2	1:L:1121:ARG:NH2	2.19	0.74
1:L:771:ALA:HB1	1:L:796:ILE:HD11	1.68	0.73
1:L:1074:ASN:ND2	1:L:1081:ALA:O	2.21	0.73
1:L:1210:GLN:NE2	1:L:1374:ASP:OD1	2.23	0.72
1:L:1000:ASP:OD1	1:L:1003:ARG:NH1	2.21	0.72
1:L:466:THR:HG22	1:L:532:LEU:HD12	1.72	0.70
1:L:547:HIS:ND1	1:L:675:THR:HG21	2.08	0.69
1:L:235:GLY:O	1:L:1178:ARG:NH2	2.26	0.69
1:L:119:LEU:HD21	1:L:1320:ILE:HD12	1.77	0.66
1:L:411:ASN:OD1	1:L:1203:ARG:NH2	2.29	0.65
1:L:16:SER:O	1:L:210:LYS:NZ	2.27	0.65
1:L:776:LYS:HE2	2:P:244:ILE:O	1.97	0.64
1:L:847:GLN:NE2	1:L:850:GLU:OE1	2.31	0.64
1:L:720:THR:HG23	1:L:742:LEU:HD22	1.80	0.63
2:Q:222:ILE:HD12	2:R:218:LEU:HD22	1.79	0.63
1:L:279:GLU:OE2	1:L:344:LYS:NZ	2.30	0.63
1:L:384:ILE:HG22	1:L:385:THR:O	1.99	0.62
1:L:771:ALA:HB1	1:L:796:ILE:CD1	2.29	0.61
1:L:668:LEU:HD13	1:L:714:TRP:HE3	1.65	0.61
1:L:279:GLU:OE2	1:L:282:ARG:NH1	2.34	0.61
1:L:254:VAL:HG11	1:L:364:PHE:CE2	2.36	0.61
1:L:319:THR:HG22	1:L:320:VAL:H	1.66	0.60
1:L:1244:ILE:HD11	1:L:1376:ILE:O	2.02	0.60
1:L:1003:ARG:NH2	1:L:1060:GLU:OE2	2.35	0.59
1:L:1024:HIS:O	1:L:1028:ASN:ND2	2.35	0.59
1:L:1191:SER:O	1:L:1192:THR:HG22	2.03	0.58
2:P:199:GLY:O	2:P:208:ARG:N	2.37	0.58
1:L:1156:ILE:HD11	1:L:1162:HIS:CD2	2.38	0.58
1:L:1152:CYS:SG	1:L:1153:MET:N	2.78	0.57
1:L:105:LYS:NZ	1:L:131:LEU:O	2.36	0.57
1:L:106:ASN:O	1:L:109:THR:OG1	2.22	0.57
2:P:196:ALA:HB3	2:P:211:MET:HB2	1.87	0.56
2:Q:211:MET:HE1	2:R:196:ALA:HB2	1.87	0.56
1:L:208:THR:O	1:L:212:VAL:HG23	2.05	0.56
1:L:423:VAL:HG12	2:Q:187:LEU:HD21	1.87	0.56
1:L:1176:THR:OG1	1:L:1325:GLU:OE1	2.09	0.56
1:L:547:HIS:NE2	1:L:671:ILE:HD12	2.21	0.55
1:L:22:ILE:HD11	1:L:208:THR:HG21	1.89	0.55
1:L:56:GLU:N	1:L:56:GLU:OE1	2.40	0.55
1:L:472:LEU:O	1:L:1065:MET:HE2	2.06	0.55
2:Q:236:GLU:N	2:Q:236:GLU:OE2	2.40	0.55
1:L:996:LYS:HB2	1:L:1001:ILE:HD11	1.89	0.54

Continued on next page...

Continued from previous page...

Atom-1	Atom-2	Interatomic distance (Å)	Clash overlap (Å)
2:R:218:LEU:HD21	2:S:218:LEU:HD21	1.89	0.54
1:L:633:VAL:HG12	1:L:633:VAL:O	2.06	0.54
1:L:827:TRP:NE1	1:L:874:GLU:OE1	2.41	0.54
1:L:1282:ARG:NH2	1:L:1325:GLU:OE2	2.41	0.54
1:L:124:THR:OG1	1:L:126:ASP:OD2	2.25	0.54
1:L:80:ASN:ND2	1:L:259:SER:O	2.40	0.54
1:L:427:ARG:NH1	1:L:447:ASP:OD2	2.41	0.54
1:L:824:VAL:HG12	1:L:845:LEU:HD12	1.90	0.54
1:L:1309:VAL:HG23	1:L:1312:ASN:HB3	1.90	0.53
1:L:81:MET:SD	1:L:197:ARG:NE	2.82	0.53
1:L:375:MET:HE1	1:L:702:GLY:O	2.08	0.53
1:L:544:ASP:OD1	1:L:571:GLN:NE2	2.41	0.53
1:L:541:TYR:OH	1:L:663:SER:O	2.27	0.52
2:P:201:THR:OG1	2:P:205:ASP:O	2.26	0.52
2:R:173:GLU:OE1	2:S:171:SER:OG	2.28	0.52
1:L:421:LEU:HD23	1:L:421:LEU:O	2.10	0.52
1:L:668:LEU:HD13	1:L:714:TRP:CE3	2.44	0.52
1:L:1295:GLN:OE1	1:L:1295:GLN:N	2.44	0.51
1:L:75:VAL:HG23	1:L:75:VAL:O	2.11	0.51
1:L:294:ARG:NH2	2:P:259:ASN:OD1	2.39	0.51
1:L:1240:GLY:HA3	1:L:1365:THR:HG21	1.91	0.50
1:L:1358:TYR:O	1:L:1361:VAL:HG22	2.11	0.50
2:Q:201:THR:OG1	2:Q:204:ARG:NH2	2.44	0.50
2:Q:201:THR:OG1	2:Q:204:ARG:CZ	2.59	0.50
1:L:916:PRO:HG2	1:L:942:ALA:HB1	1.93	0.50
1:L:22:ILE:HD13	1:L:205:GLN:OE1	2.12	0.50
1:L:134:ILE:HD11	1:L:229:LEU:HD11	1.93	0.49
1:L:329:TYR:CE2	1:L:333:LEU:HD11	2.47	0.49
2:P:183:LEU:HD12	2:P:184:SER:N	2.28	0.48
1:L:414:ARG:NH1	1:L:1202:ASN:OD1	2.47	0.48
1:L:1010:LEU:O	1:L:1013:SER:OG	2.23	0.48
1:L:1156:ILE:HD11	1:L:1162:HIS:HD2	1.75	0.48
2:P:258:LEU:O	2:P:262:VAL:HG23	2.13	0.48
2:Q:195:ILE:HD13	2:Q:212:ILE:HD12	1.95	0.47
1:L:35:LEU:HD23	1:L:320:VAL:HG21	1.97	0.47
1:L:119:LEU:HD21	1:L:1320:ILE:CD1	2.42	0.47
1:L:560:VAL:O	1:L:560:VAL:HG12	2.14	0.47
1:L:112:LEU:HD11	1:L:857:ILE:CD1	2.45	0.47
1:L:649:ALA:HA	1:L:652:ALA:HB3	1.97	0.46
1:L:626:TYR:O	1:L:755:VAL:HG12	2.15	0.46
1:L:634:THR:OG1	1:L:794:THR:HG22	2.16	0.46

Continued on next page...

Continued from previous page...

Atom-1	Atom-2	Interatomic distance (Å)	Clash overlap (Å)
1:L:828:ILE:HD11	1:L:842:ILE:HG13	1.98	0.46
1:L:329:TYR:CZ	1:L:333:LEU:HD11	2.50	0.46
1:L:793:GLU:HG3	1:L:794:THR:HG23	1.98	0.46
2:P:195:ILE:HD11	2:Q:193:LEU:HD13	1.98	0.46
1:L:151:TYR:OH	1:L:873:HIS:NE2	2.33	0.46
1:L:383:GLU:CD	2:P:204:ARG:HH12	2.25	0.45
1:L:294:ARG:NE	2:P:259:ASN:OD1	2.46	0.45
1:L:390:LEU:HD13	2:P:195:ILE:HD11	1.98	0.45
1:L:592:GLU:OE1	1:L:592:GLU:N	2.46	0.45
1:L:668:LEU:HD12	1:L:672:VAL:HG21	1.97	0.45
1:L:1083:ASN:OD1	1:L:1084:GLY:N	2.50	0.45
2:R:218:LEU:HD21	2:S:218:LEU:CD2	2.45	0.45
1:L:971:ILE:HG22	1:L:972:GLU:N	2.32	0.45
1:L:763:GLU:HG2	1:L:764:VAL:HG13	1.98	0.45
1:L:280:ILE:HG23	1:L:351:LEU:HD13	1.99	0.44
1:L:653:ASP:OD2	2:Q:195:ILE:HG23	2.17	0.44
1:L:1205:ILE:HG22	1:L:1205:ILE:O	2.17	0.44
1:L:265:GLY:O	1:L:269:VAL:HG23	2.16	0.44
1:L:711:ILE:HG22	1:L:712:GLU:H	1.82	0.44
1:L:571:GLN:OE1	1:L:571:GLN:N	2.51	0.44
1:L:825:GLY:O	1:L:828:ILE:HG23	2.18	0.44
1:L:390:LEU:HD13	2:P:195:ILE:CD1	2.47	0.44
2:Q:205:ASP:O	2:R:208:ARG:NE	2.48	0.44
1:L:1240:GLY:C	1:L:1365:THR:HG21	2.42	0.44
1:L:699:GLU:OE2	2:P:204:ARG:NH2	2.45	0.43
1:L:47:LYS:NZ	1:L:687:GLU:OE1	2.50	0.43
1:L:276:ILE:HD11	1:L:360:ILE:HD11	1.99	0.43
1:L:362:ARG:NH2	1:L:557:GLU:OE1	2.51	0.43
1:L:668:LEU:HD12	1:L:668:LEU:O	2.18	0.43
1:L:1284:THR:HG22	1:L:1284:THR:O	2.18	0.43
1:L:809:SER:O	1:L:812:VAL:HG12	2.18	0.43
1:L:1169:GLU:OE2	1:L:1333:LYS:NZ	2.52	0.43
2:R:218:LEU:HD23	2:S:222:ILE:CD1	2.49	0.43
1:L:1244:ILE:HG22	1:L:1245:SER:N	2.34	0.42
2:P:189:LEU:HD13	2:S:190:LEU:CD2	2.50	0.42
1:L:547:HIS:HD1	1:L:675:THR:HG21	1.84	0.42
2:S:170:LEU:HD23	2:S:170:LEU:H	1.83	0.42
1:L:112:LEU:HD21	1:L:857:ILE:HD13	2.01	0.42
1:L:726:LEU:HD21	1:L:785:ILE:HD11	2.01	0.42
1:L:1300:ARG:HD3	1:L:1341:LEU:HD22	2.01	0.42
1:L:17:TYR:OH	1:L:826:PRO:O	2.33	0.42

Continued on next page...

Continued from previous page...

Atom-1	Atom-2	Interatomic distance (Å)	Clash overlap (Å)
2:Q:183:LEU:HD21	2:R:179:ILE:HG23	2.02	0.42
1:L:1006:VAL:HG11	1:L:1063:VAL:HG13	2.02	0.42
1:L:1142:VAL:HG13	1:L:1142:VAL:O	2.19	0.42
1:L:112:LEU:HD11	1:L:857:ILE:HD12	2.02	0.41
1:L:112:LEU:HD12	1:L:131:LEU:HD11	2.02	0.41
1:L:280:ILE:O	1:L:284:THR:HG22	2.20	0.41
1:L:996:LYS:CB	1:L:1001:ILE:HD11	2.49	0.41
1:L:1240:GLY:CA	1:L:1365:THR:HG21	2.49	0.41
2:P:242:THR:HG23	2:P:242:THR:O	2.19	0.41
1:L:1244:ILE:HG22	1:L:1245:SER:H	1.85	0.41
1:L:789:LEU:HD22	1:L:794:THR:CG2	2.51	0.41
1:L:294:ARG:HE	2:P:259:ASN:CG	2.29	0.41
1:L:1259:VAL:HG12	1:L:1259:VAL:O	2.21	0.41
2:Q:207:ILE:HG22	2:Q:207:ILE:O	2.20	0.41
1:L:84:GLU:OE2	1:L:197:ARG:NE	2.53	0.41
1:L:139:ILE:HG22	1:L:141:SER:H	1.86	0.41
1:L:1038:ASN:O	1:L:1038:ASN:ND2	2.54	0.41
1:L:264:GLU:HB3	1:L:308:LEU:HD22	2.03	0.41
1:L:287:ALA:O	1:L:291:THR:HG22	2.21	0.41
1:L:633:VAL:HG11	1:L:795:TYR:OH	2.21	0.41
1:L:662:GLN:NE2	2:Q:213:GLY:O	2.48	0.41
1:L:1010:LEU:HD23	1:L:1022:ALA:HB2	2.02	0.41
1:L:1263:HIS:O	1:L:1270:ARG:NH2	2.50	0.41
1:L:1267:VAL:HG22	1:L:1268:SER:H	1.85	0.41
1:L:973:LYS:O	1:L:975:GLU:N	2.54	0.40
1:L:496:THR:HG23	1:L:497:ILE:N	2.36	0.40
1:L:496:THR:HG23	1:L:497:ILE:H	1.87	0.40
1:L:1001:ILE:HD13	1:L:1093:MET:HB2	2.03	0.40
1:L:1293:ILE:HD11	1:L:1339:PRO:CG	2.51	0.40
1:L:320:VAL:O	1:L:320:VAL:HG12	2.21	0.40

There are no symmetry-related clashes.

5.3 Torsion angles

5.3.1 Protein backbone

In the following table, the Percentiles column shows the percent Ramachandran outliers of the chain as a percentile score with respect to all PDB entries followed by that with respect to all EM entries.

The Analysed column shows the number of residues for which the backbone conformation was analysed, and the total number of residues.

Mol	Chain	Analysed	Favoured	Allowed	Outliers	Percentiles	
1	L	1350/2030 (66%)	1350 (100%)	0	0	100	100
2	P	96/319 (30%)	96 (100%)	0	0	100	100
2	Q	64/319 (20%)	64 (100%)	0	0	100	100
2	R	50/319 (16%)	50 (100%)	0	0	100	100
2	S	49/319 (15%)	49 (100%)	0	0	100	100
All	All	1609/3306 (49%)	1609 (100%)	0	0	100	100

There are no Ramachandran outliers to report.

5.3.2 Protein sidechains ⓘ

In the following table, the Percentiles column shows the percent sidechain outliers of the chain as a percentile score with respect to all PDB entries followed by that with respect to all EM entries.

The Analysed column shows the number of residues for which the sidechain conformation was analysed, and the total number of residues.

Mol	Chain	Analysed	Rotameric	Outliers	Percentiles	
1	L	1245/1860 (67%)	1245 (100%)	0	100	100
2	P	80/280 (29%)	80 (100%)	0	100	100
2	Q	51/280 (18%)	51 (100%)	0	100	100
2	R	42/280 (15%)	42 (100%)	0	100	100
2	S	43/280 (15%)	43 (100%)	0	100	100
All	All	1461/2980 (49%)	1461 (100%)	0	100	100

There are no protein residues with a non-rotameric sidechain to report.

Sometimes sidechains can be flipped to improve hydrogen bonding and reduce clashes. All (7) such sidechains are listed below:

Mol	Chain	Res	Type
1	L	42	ASN
1	L	52	ASN
1	L	348	ASN
1	L	381	ASN
1	L	420	ASN

Continued on next page...

Continued from previous page...

Mol	Chain	Res	Type
1	L	573	GLN
1	L	1015	ASN

5.3.3 RNA [i](#)

There are no RNA molecules in this entry.

5.4 Non-standard residues in protein, DNA, RNA chains [i](#)

There are no non-standard protein/DNA/RNA residues in this entry.

5.5 Carbohydrates [i](#)

There are no oligosaccharides in this entry.

5.6 Ligand geometry [i](#)

There are no ligands in this entry.

5.7 Other polymers [i](#)

There are no such residues in this entry.

5.8 Polymer linkage issues [i](#)

There are no chain breaks in this entry.

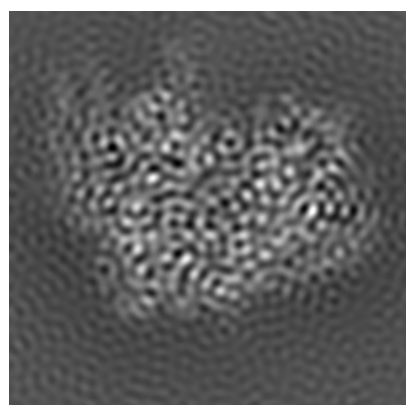
6 Map visualisation [i](#)

This section contains visualisations of the EMDB entry EMD-20651. These allow visual inspection of the internal detail of the map and identification of artifacts.

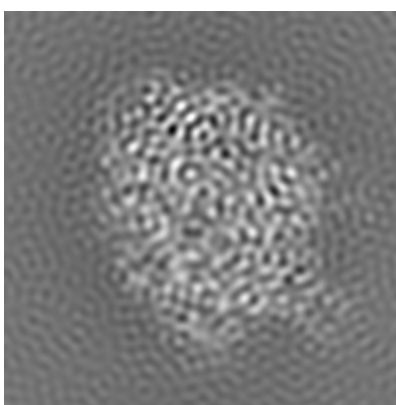
No raw map or half-maps were deposited for this entry and therefore no images, graphs, etc. pertaining to the raw map can be shown.

6.1 Orthogonal projections [i](#)

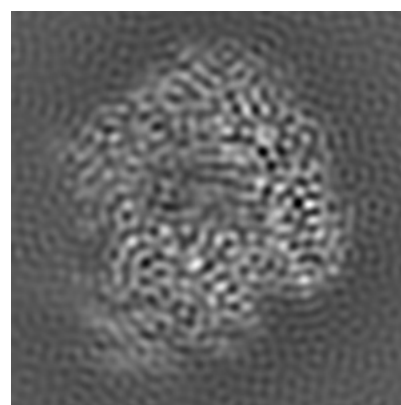
6.1.1 Primary map



X



Y

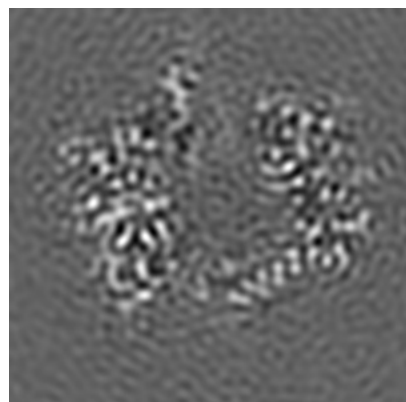


Z

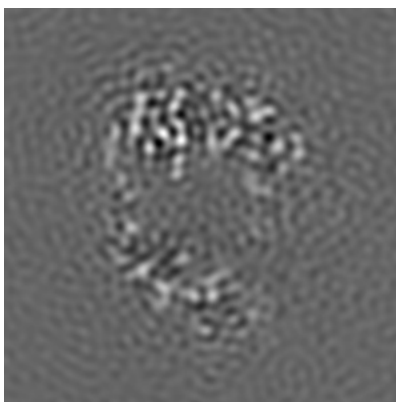
The images above show the map projected in three orthogonal directions.

6.2 Central slices [i](#)

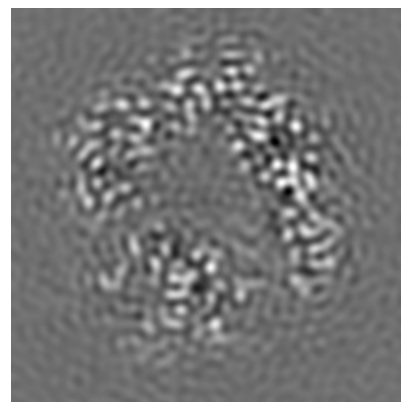
6.2.1 Primary map



X Index: 48



Y Index: 48

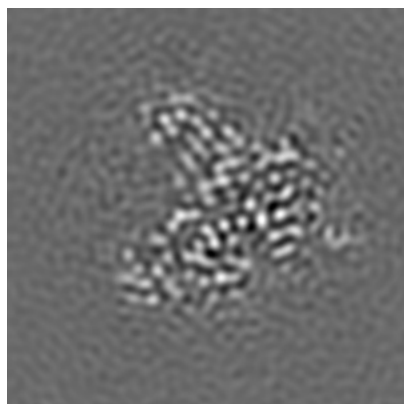


Z Index: 48

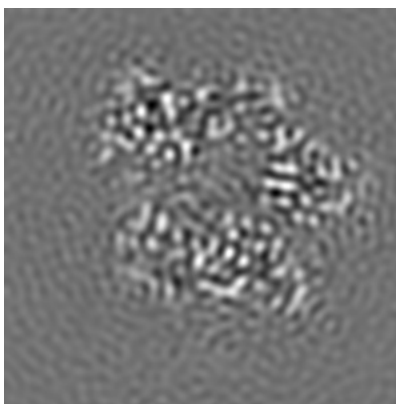
The images above show central slices of the map in three orthogonal directions.

6.3 Largest variance slices [i](#)

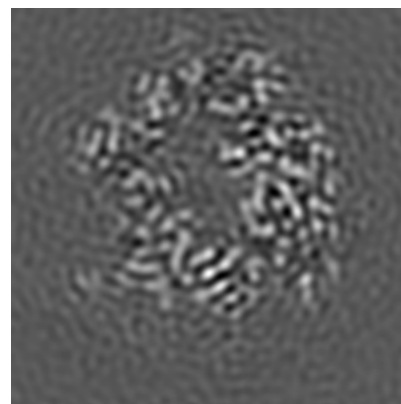
6.3.1 Primary map



X Index: 63



Y Index: 39

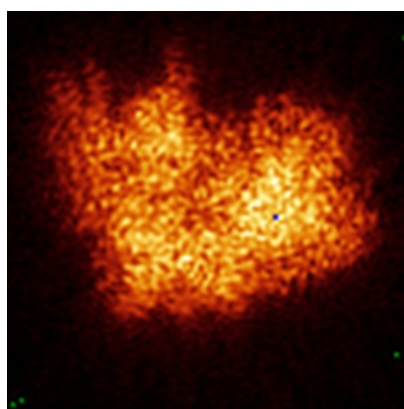


Z Index: 41

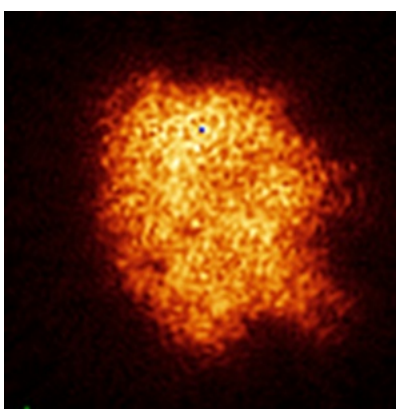
The images above show the largest variance slices of the map in three orthogonal directions.

6.4 Orthogonal standard-deviation projections (False-color) [i](#)

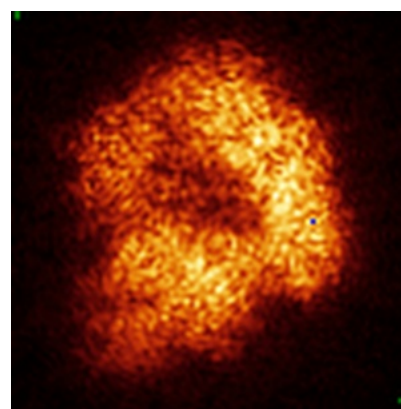
6.4.1 Primary map



X



Y

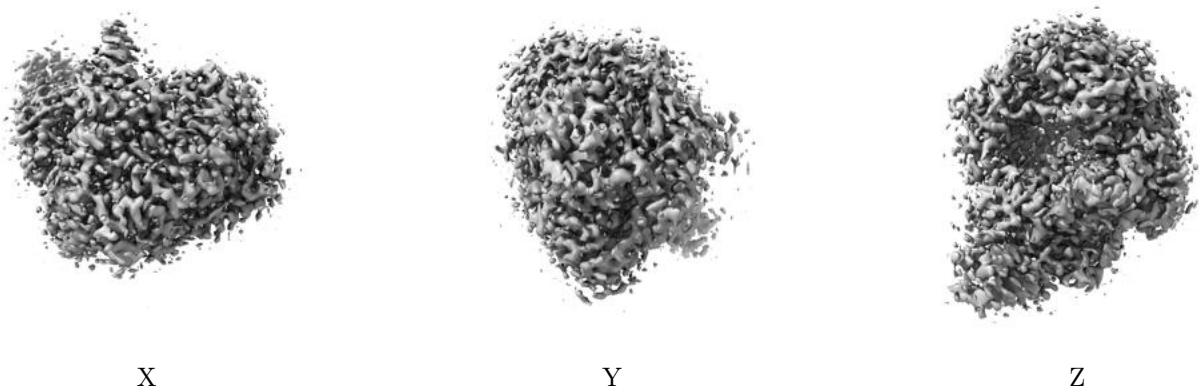


Z

The images above show the map standard deviation projections with false color in three orthogonal directions. Minimum values are shown in green, max in blue, and dark to light orange shades represent small to large values respectively.

6.5 Orthogonal surface views [i](#)

6.5.1 Primary map



The images above show the 3D surface view of the map at the recommended contour level 0.04. These images, in conjunction with the slice images, may facilitate assessment of whether an appropriate contour level has been provided.

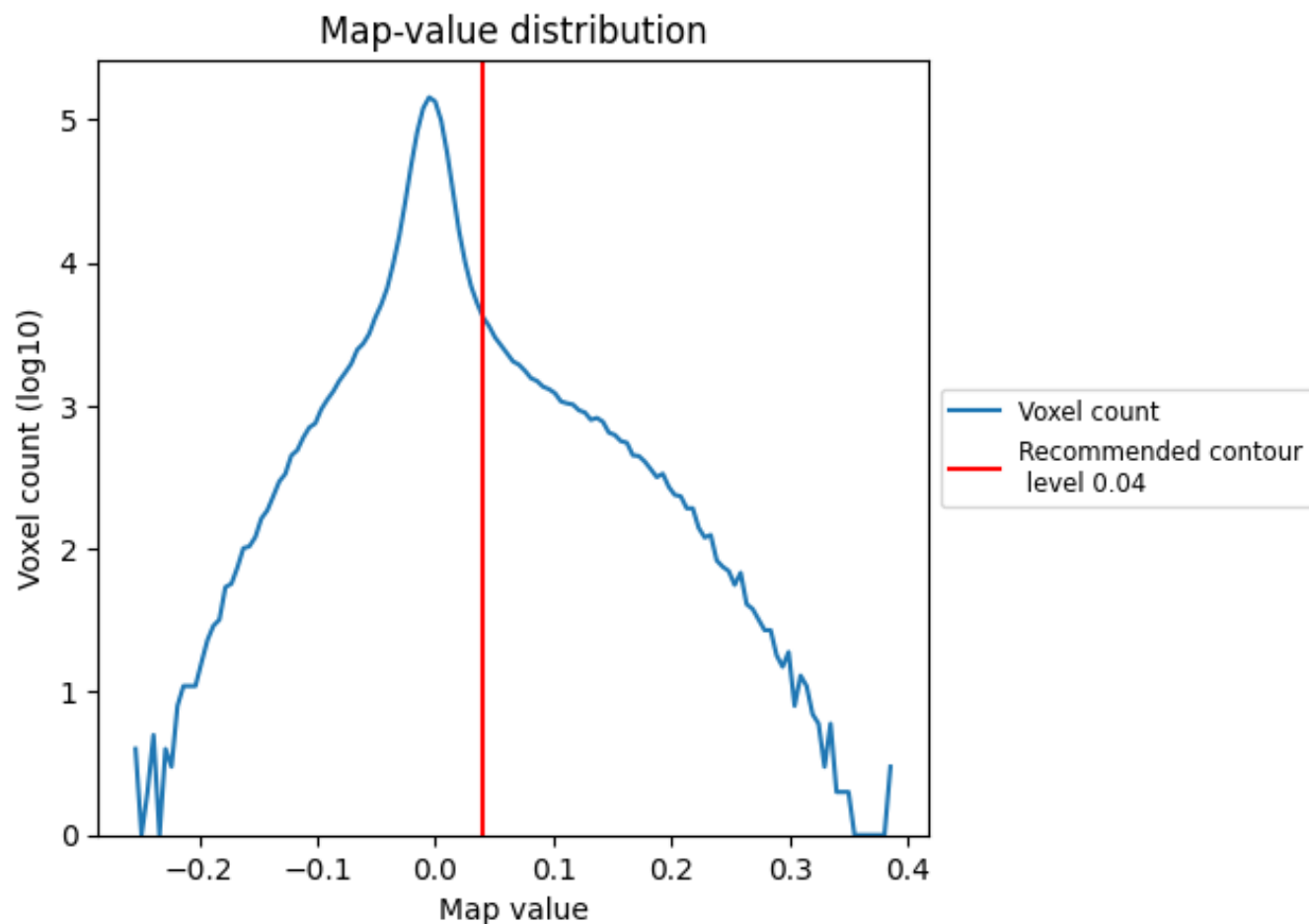
6.6 Mask visualisation [i](#)

This section was not generated. No masks/segmentation were deposited.

7 Map analysis [i](#)

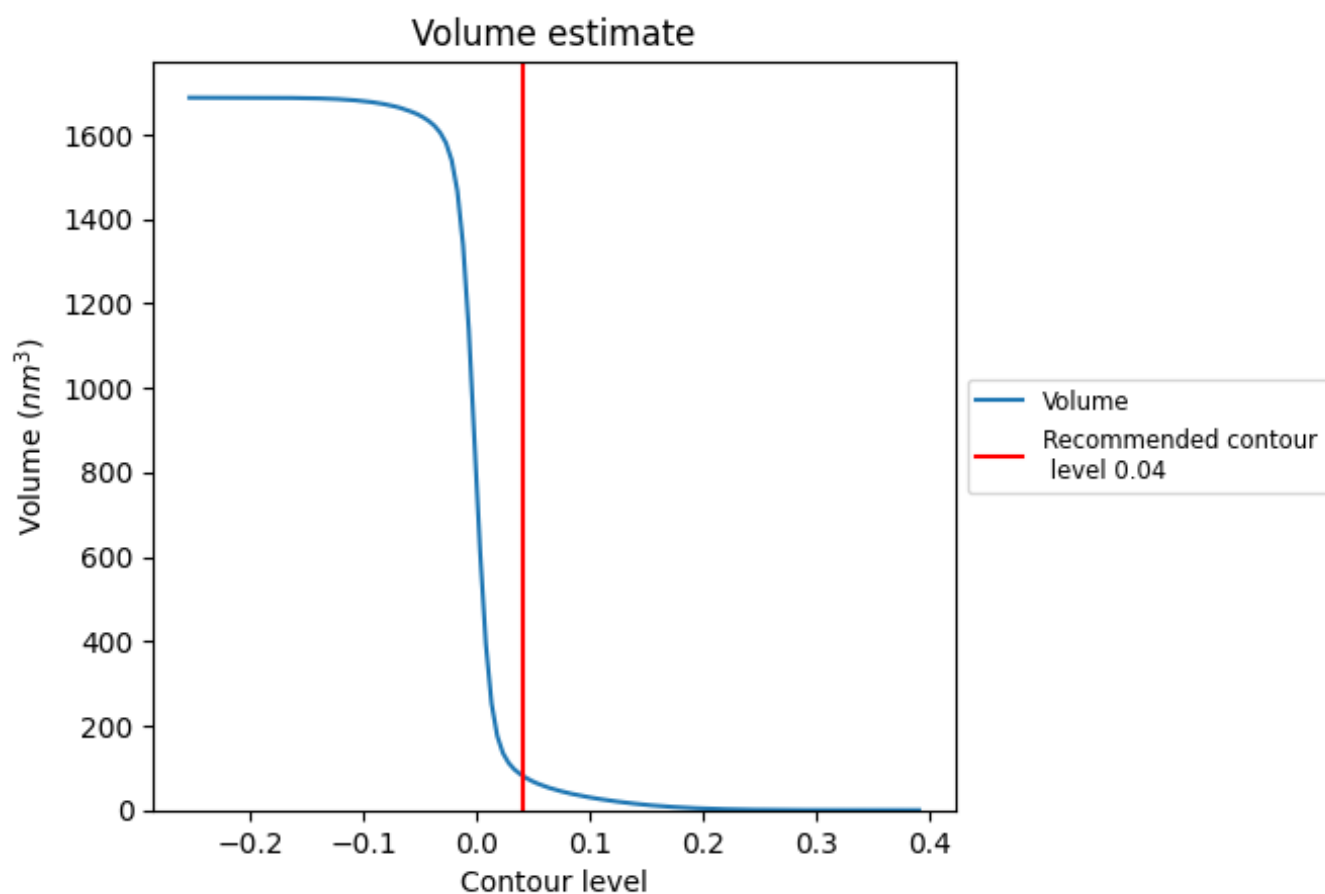
This section contains the results of statistical analysis of the map.

7.1 Map-value distribution [i](#)



The map-value distribution is plotted in 128 intervals along the x-axis. The y-axis is logarithmic. A spike in this graph at zero usually indicates that the volume has been masked.

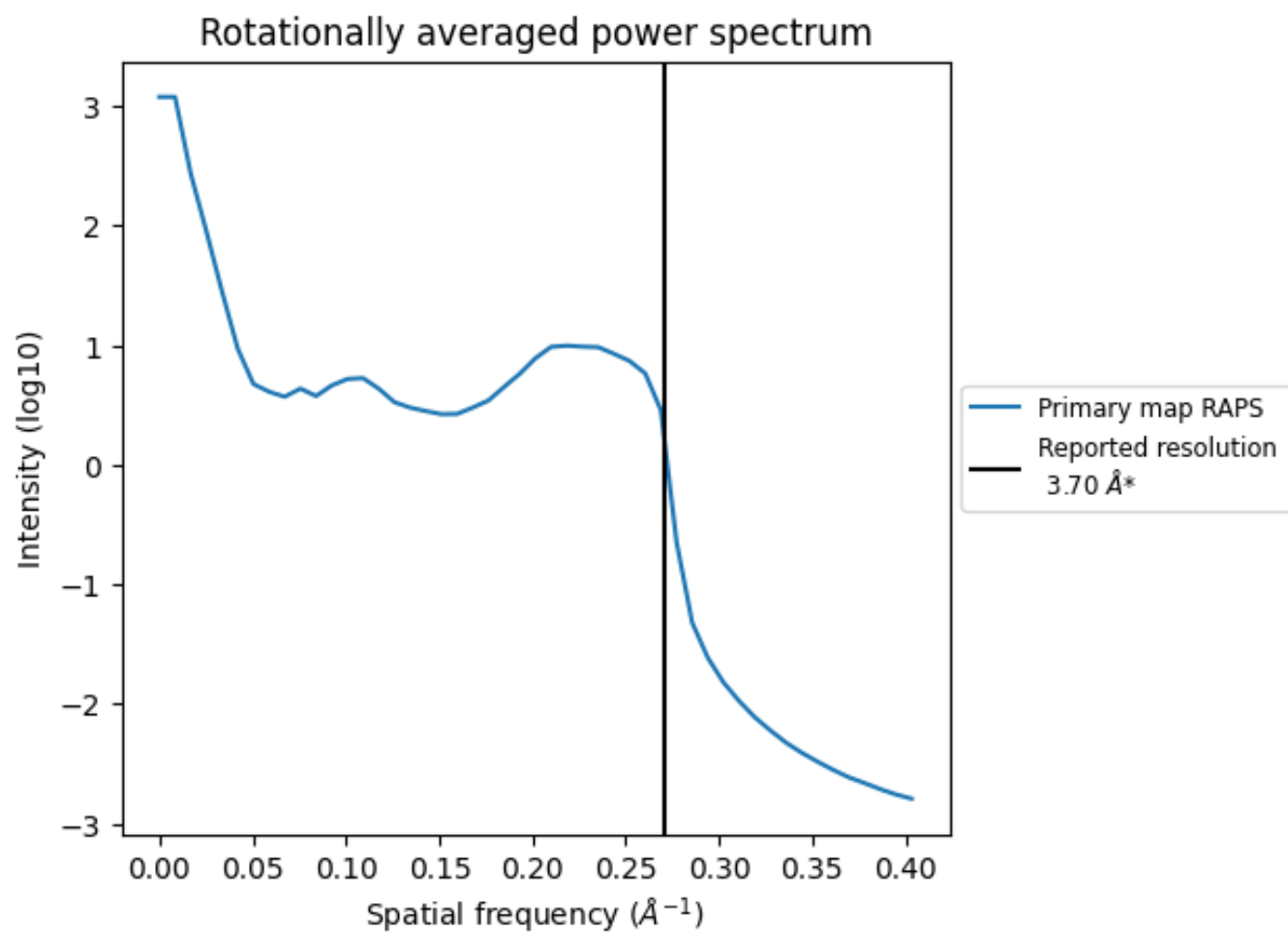
7.2 Volume estimate [i](#)



The volume at the recommended contour level is 82 nm^3 ; this corresponds to an approximate mass of 74 kDa.

The volume estimate graph shows how the enclosed volume varies with the contour level. The recommended contour level is shown as a vertical line and the intersection between the line and the curve gives the volume of the enclosed surface at the given level.

7.3 Rotationally averaged power spectrum ⓘ

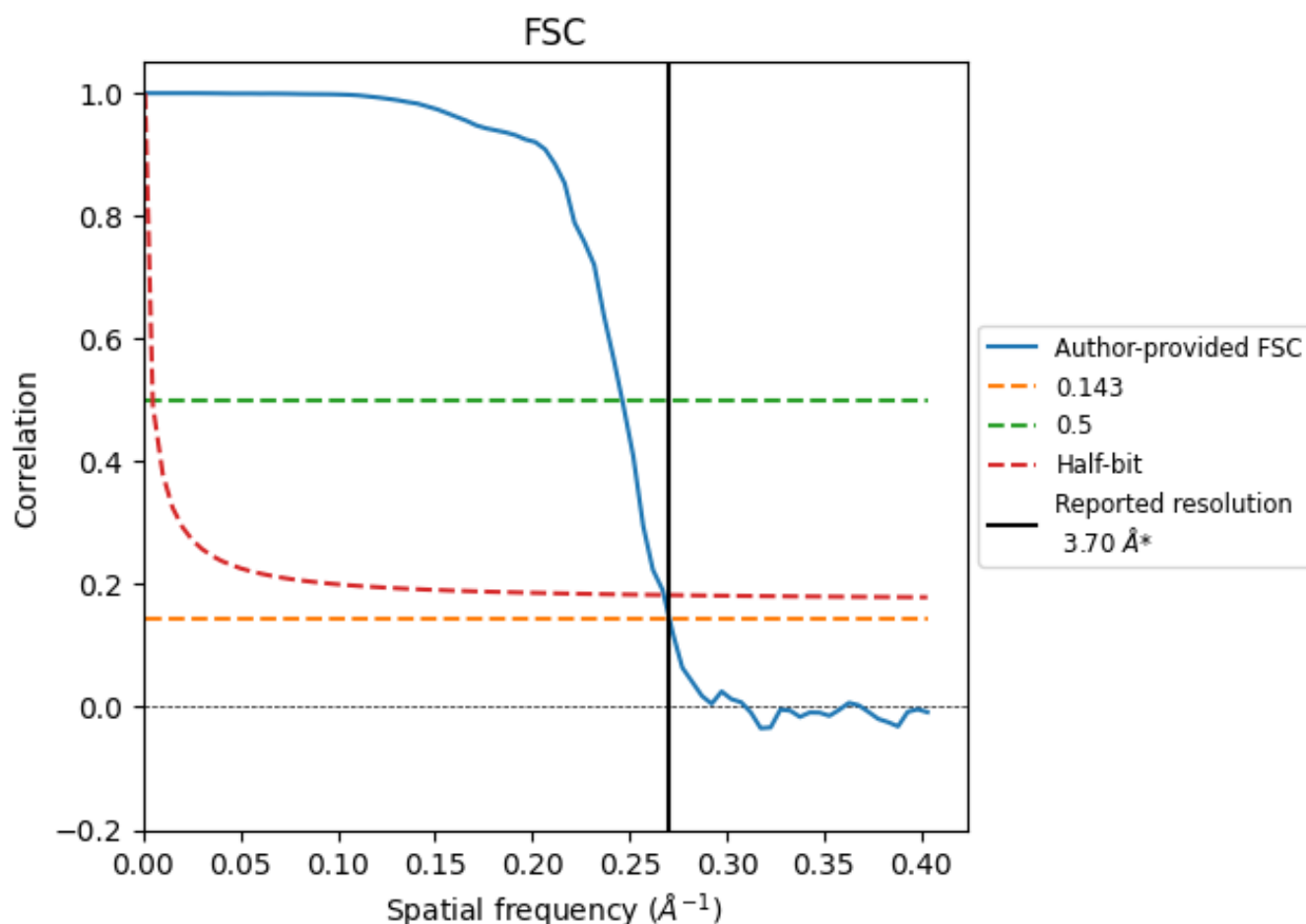


*Reported resolution corresponds to spatial frequency of 0.270 Å⁻¹

8 Fourier-Shell correlation [i](#)

Fourier-Shell Correlation (FSC) is the most commonly used method to estimate the resolution of single-particle and subtomogram-averaged maps. The shape of the curve depends on the imposed symmetry, mask and whether or not the two 3D reconstructions used were processed from a common reference. The reported resolution is shown as a black line. A curve is displayed for the half-bit criterion in addition to lines showing the 0.143 gold standard cut-off and 0.5 cut-off.

8.1 FSC [i](#)



*Reported resolution corresponds to spatial frequency of 0.270 Å⁻¹

8.2 Resolution estimates [i](#)

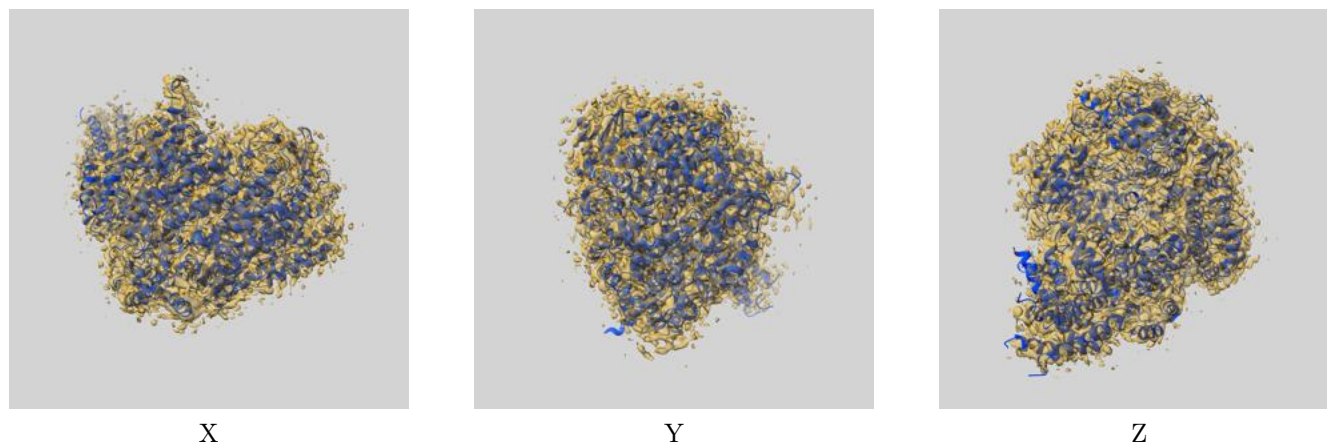
Resolution estimate (Å)	Estimation criterion (FSC cut-off)		
	0.143	0.5	Half-bit
Reported by author	3.70	-	-
Author-provided FSC curve	3.70	4.06	3.74
Unmasked-calculated*	-	-	-

*Resolution estimate based on FSC curve calculated by comparison of deposited half-maps.

9 Map-model fit [i](#)

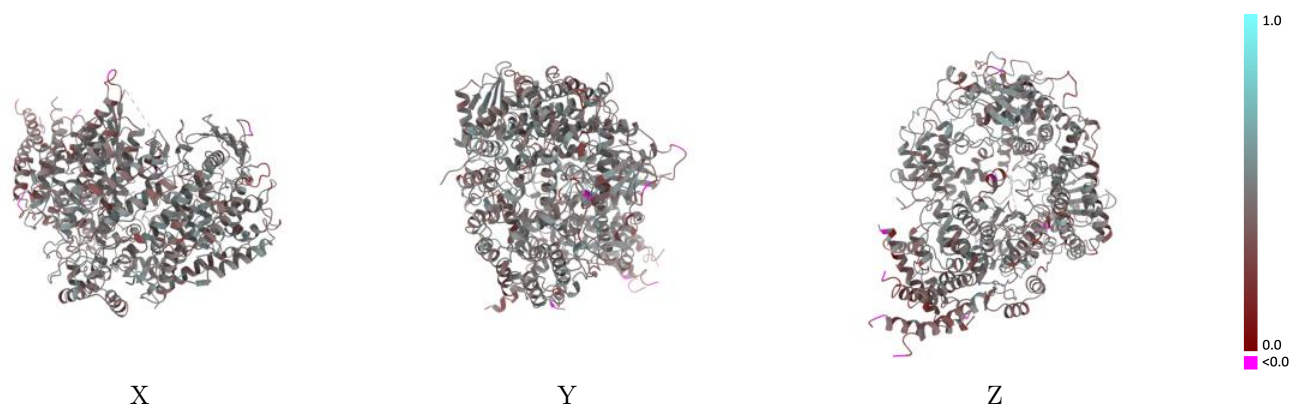
This section contains information regarding the fit between EMDB map EMD-20651 and PDB model 6U5O. Per-residue inclusion information can be found in section 3 on page 7.

9.1 Map-model overlay [i](#)



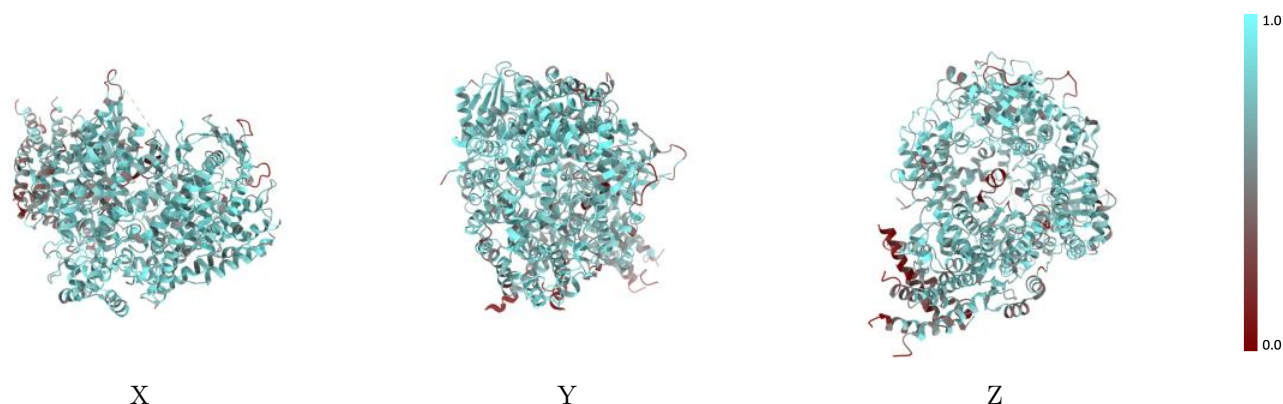
The images above show the 3D surface view of the map at the recommended contour level 0.04 at 50% transparency in yellow overlaid with a ribbon representation of the model coloured in blue. These images allow for the visual assessment of the quality of fit between the atomic model and the map.

9.2 Q-score mapped to coordinate model [i](#)



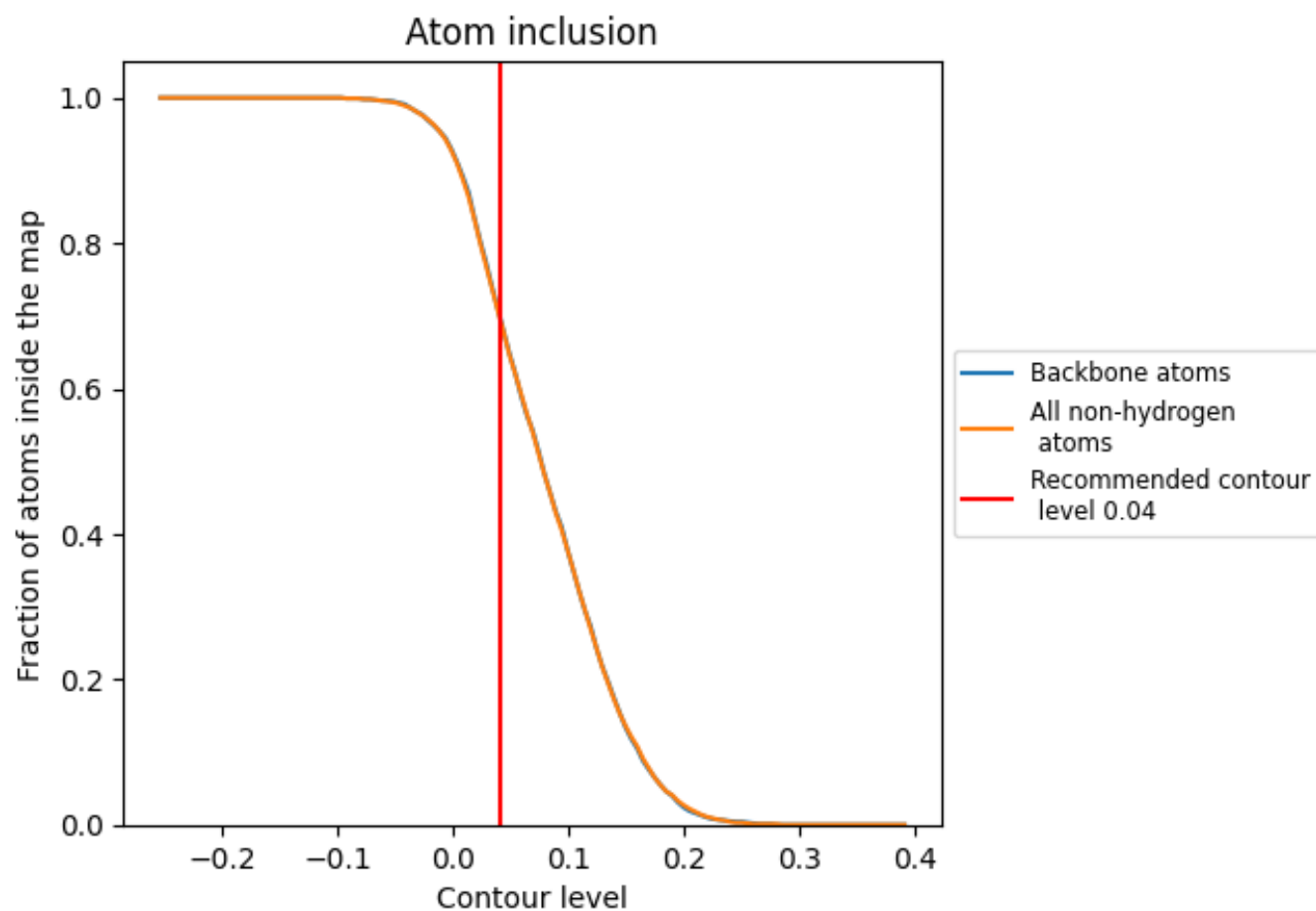
The images above show the model with each residue coloured according to its Q-score. This shows their resolvability in the map with higher Q-score values reflecting better resolvability. Please note: Q-score is calculating the resolvability of atoms, and thus high values are only expected at resolutions at which atoms can be resolved. Low Q-score values may therefore be expected for many entries.

9.3 Atom inclusion mapped to coordinate model [i](#)



The images above show the model with each residue coloured according to its atom inclusion. This shows to what extent they are inside the map at the recommended contour level (0.04).

9.4 Atom inclusion [i](#)



At the recommended contour level, 70% of all backbone atoms, 70% of all non-hydrogen atoms, are inside the map.

9.5 Map-model fit summary ⓘ

The table lists the average atom inclusion at the recommended contour level (0.04) and Q-score for the entire model and for each chain.

Chain	Atom inclusion	Q-score
All	<div></div> 0.6970	<div></div> 0.4370
L	<div></div> 0.7310	<div></div> 0.4490
P	<div></div> 0.6080	<div></div> 0.4010
Q	<div></div> 0.6000	<div></div> 0.3870
R	<div></div> 0.4210	<div></div> 0.3090
S	<div></div> 0.3380	<div></div> 0.3440

