



Full wwPDB EM Validation Report ⓘ

Oct 20, 2024 – 07:15 PM EDT

PDB ID : 7TNJ
EMDB ID : EMD-26011
Title : Complex NNNN of AMPA-subtype iGluR GluA2 in complex with auxiliary subunit gamma2 (Stargazin) at low glutamate concentration (20 uM) in the presence of cyclothiazide (100 uM)
Authors : Yelshanskaya, M.V.; Sobolevsky, A.I.
Deposited on : 2022-01-21
Resolution : 4.02 Å(reported)

This is a Full wwPDB EM Validation Report for a publicly released PDB entry.

We welcome your comments at validation@mail.wwpdb.org

A user guide is available at

<https://www.wwpdb.org/validation/2017/EMValidationReportHelp>
with specific help available everywhere you see the ⓘ symbol.

The types of validation reports are described at

<http://www.wwpdb.org/validation/2017/FAQs#types>.

The following versions of software and data (see [references ⓘ](#)) were used in the production of this report:

EMDB validation analysis : 0.0.1.dev113
Mogul : 2022.3.0, CSD as543be (2022)
MolProbity : 4.02b-467
buster-report : 1.1.7 (2018)
Percentile statistics : 20231227.v01 (using entries in the PDB archive December 27th 2023)
MapQ : 1.9.13
Ideal geometry (proteins) : Engh & Huber (2001)
Ideal geometry (DNA, RNA) : Parkinson et al. (1996)
Validation Pipeline (wwPDB-VP) : 2.39

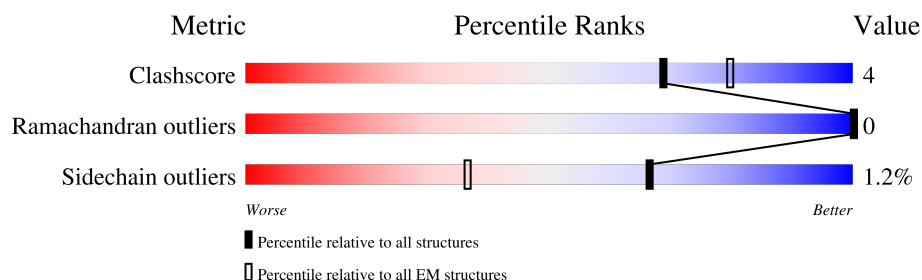
1 Overall quality at a glance

The following experimental techniques were used to determine the structure:

ELECTRON MICROSCOPY

The reported resolution of this entry is 4.02 Å.

Percentile scores (ranging between 0-100) for global validation metrics of the entry are shown in the following graphic. The table shows the number of entries on which the scores are based.



Metric	Whole archive (#Entries)	EM structures (#Entries)
Clashscore	210492	15764
Ramachandran outliers	207382	16835
Sidechain outliers	206894	16415

The table below summarises the geometric issues observed across the polymeric chains and their fit to the map. The red, orange, yellow and green segments of the bar indicate the fraction of residues that contain outliers for ≥ 3 , 2, 1 and 0 types of geometric quality criteria respectively. A grey segment represents the fraction of residues that are not modelled. The numeric value for each fraction is indicated below the corresponding segment, with a dot representing fractions $\leq 5\%$. The upper red bar (where present) indicates the fraction of residues that have poor fit to the EM map (all-atom inclusion $< 40\%$). The numeric value is given above the bar.

Mol	Chain	Length	Quality of chain
1	A	1033	<div> <div>10%</div> <div>53%</div> <div>5%</div> <div>42%</div> </div>
1	B	1033	<div> <div>15%</div> <div>52%</div> <div>7%</div> <div>42%</div> </div>
1	C	1033	<div> <div>12%</div> <div>53%</div> <div>5%</div> <div>42%</div> </div>
1	D	1033	<div> <div>13%</div> <div>51%</div> <div>7%</div> <div>42%</div> </div>

2 Entry composition

There are 2 unique types of molecules in this entry. The entry contains 18810 atoms, of which 0 are hydrogens and 0 are deuteriums.

In the tables below, the AltConf column contains the number of residues with at least one atom in alternate conformation and the Trace column contains the number of residues modelled with at most 2 atoms.

- Molecule 1 is a protein called Isoform Flip of Glutamate receptor 2, Voltage-dependent calcium channel gamma-3 subunit chimera.

Mol	Chain	Residues	Atoms					AltConf	Trace
1	A	599	Total	C	N	O	S	0	0
			4669	3034	756	847	32		
1	B	602	Total	C	N	O	S	0	0
			4688	3044	760	852	32		
1	C	599	Total	C	N	O	S	0	0
			4669	3034	756	847	32		
1	D	602	Total	C	N	O	S	0	0
			4688	3044	760	852	32		

There are 228 discrepancies between the modelled and reference sequences:

Chain	Residue	Modelled	Actual	Comment	Reference
A	241	GLU	ASN	conflict	UNP P19491-2
A	382	LEU	VAL	conflict	UNP P19491-2
A	?	-	LEU	deletion	UNP P19491-2
A	?	-	THR	deletion	UNP P19491-2
A	?	-	GLU	deletion	UNP P19491-2
A	?	-	LEU	deletion	UNP P19491-2
A	?	-	PRO	deletion	UNP P19491-2
A	?	-	SER	deletion	UNP P19491-2
A	384	GLU	GLY	conflict	UNP P19491-2
A	385	ASP	ASN	conflict	UNP P19491-2
A	392	GLN	ASN	conflict	UNP P19491-2
A	999	GLY	-	linker	UNP P19491-2
A	1000	THR	-	linker	UNP P19491-2
A	1001	GLY	-	linker	UNP P19491-2
A	1002	LEU	-	linker	UNP P19491-2
A	1003	PHE	-	linker	UNP P19491-2
A	1007	VAL	ILE	conflict	UNP Q8VHX0
A	1011	LEU	ILE	conflict	UNP Q8VHX0
A	1040	LYS	ARG	conflict	UNP Q8VHX0
A	1044	VAL	THR	conflict	UNP Q8VHX0
A	1046	GLU	ASP	conflict	UNP Q8VHX0

Continued on next page...

Continued from previous page...

Chain	Residue	Modelled	Actual	Comment	Reference
A	1047	ASP	ASN	conflict	UNP Q8VHX0
A	1051	LYS	ARG	conflict	UNP Q8VHX0
A	1071	ASN	ALA	conflict	UNP Q8VHX0
A	1073	LYS	ARG	conflict	UNP Q8VHX0
A	1075	LEU	VAL	conflict	UNP Q8VHX0
A	1078	GLN	LYS	conflict	UNP Q8VHX0
A	1090	ALA	GLN	conflict	UNP Q8VHX0
A	1096	PHE	LEU	conflict	UNP Q8VHX0
A	1105	ILE	VAL	conflict	UNP Q8VHX0
A	1112	ILE	THR	conflict	UNP Q8VHX0
A	1116	MET	PHE	conflict	UNP Q8VHX0
A	1121	ILE	VAL	conflict	UNP Q8VHX0
A	1127	TYR	HIS	conflict	UNP Q8VHX0
A	1128	LYS	ARG	conflict	UNP Q8VHX0
A	1129	THR	SER	conflict	UNP Q8VHX0
A	1132	ASN	SER	conflict	UNP Q8VHX0
A	1133	ILE	VAL	conflict	UNP Q8VHX0
A	1164	SER	GLY	conflict	UNP Q8VHX0
A	1165	LYS	GLN	conflict	UNP Q8VHX0
A	1166	SER	ARG	conflict	UNP Q8VHX0
A	1171	ASN	-	insertion	UNP Q8VHX0
A	1184	LEU	PHE	conflict	UNP Q8VHX0
A	1191	MET	ILE	conflict	UNP Q8VHX0
A	1195	LEU	VAL	conflict	UNP Q8VHX0
A	1199	MET	ILE	conflict	UNP Q8VHX0
A	1200	PHE	TYR	conflict	UNP Q8VHX0
A	1202	ASP	GLU	conflict	UNP Q8VHX0
A	1203	ARG	LYS	conflict	UNP Q8VHX0
A	1205	LYS	GLN	conflict	UNP Q8VHX0
A	1208	THR	-	expression tag	UNP Q8VHX0
A	1209	GLY	-	expression tag	UNP Q8VHX0
A	1210	GLY	-	expression tag	UNP Q8VHX0
A	1211	LEU	-	expression tag	UNP Q8VHX0
A	1212	VAL	-	expression tag	UNP Q8VHX0
A	1213	PRO	-	expression tag	UNP Q8VHX0
A	1214	ARG	-	expression tag	UNP Q8VHX0
B	241	GLU	ASN	conflict	UNP P19491-2
B	382	LEU	VAL	conflict	UNP P19491-2
B	?	-	LEU	deletion	UNP P19491-2
B	?	-	THR	deletion	UNP P19491-2
B	?	-	GLU	deletion	UNP P19491-2
B	?	-	LEU	deletion	UNP P19491-2

Continued on next page...

Continued from previous page...

Chain	Residue	Modelled	Actual	Comment	Reference
B	?	-	PRO	deletion	UNP P19491-2
B	?	-	SER	deletion	UNP P19491-2
B	384	GLU	GLY	conflict	UNP P19491-2
B	385	ASP	ASN	conflict	UNP P19491-2
B	392	GLN	ASN	conflict	UNP P19491-2
B	999	GLY	-	linker	UNP P19491-2
B	1000	THR	-	linker	UNP P19491-2
B	1001	GLY	-	linker	UNP P19491-2
B	1002	LEU	-	linker	UNP P19491-2
B	1003	PHE	-	linker	UNP P19491-2
B	1007	VAL	ILE	conflict	UNP Q8VHX0
B	1011	LEU	ILE	conflict	UNP Q8VHX0
B	1040	LYS	ARG	conflict	UNP Q8VHX0
B	1044	VAL	THR	conflict	UNP Q8VHX0
B	1046	GLU	ASP	conflict	UNP Q8VHX0
B	1047	ASP	ASN	conflict	UNP Q8VHX0
B	1051	LYS	ARG	conflict	UNP Q8VHX0
B	1071	ASN	ALA	conflict	UNP Q8VHX0
B	1073	LYS	ARG	conflict	UNP Q8VHX0
B	1075	LEU	VAL	conflict	UNP Q8VHX0
B	1078	GLN	LYS	conflict	UNP Q8VHX0
B	1090	ALA	GLN	conflict	UNP Q8VHX0
B	1096	PHE	LEU	conflict	UNP Q8VHX0
B	1105	ILE	VAL	conflict	UNP Q8VHX0
B	1112	ILE	THR	conflict	UNP Q8VHX0
B	1116	MET	PHE	conflict	UNP Q8VHX0
B	1121	ILE	VAL	conflict	UNP Q8VHX0
B	1127	TYR	HIS	conflict	UNP Q8VHX0
B	1128	LYS	ARG	conflict	UNP Q8VHX0
B	1129	THR	SER	conflict	UNP Q8VHX0
B	1132	ASN	SER	conflict	UNP Q8VHX0
B	1133	ILE	VAL	conflict	UNP Q8VHX0
B	1164	SER	GLY	conflict	UNP Q8VHX0
B	1165	LYS	GLN	conflict	UNP Q8VHX0
B	1166	SER	ARG	conflict	UNP Q8VHX0
B	1171	ASN	-	insertion	UNP Q8VHX0
B	1184	LEU	PHE	conflict	UNP Q8VHX0
B	1191	MET	ILE	conflict	UNP Q8VHX0
B	1195	LEU	VAL	conflict	UNP Q8VHX0
B	1199	MET	ILE	conflict	UNP Q8VHX0
B	1200	PHE	TYR	conflict	UNP Q8VHX0
B	1202	ASP	GLU	conflict	UNP Q8VHX0

Continued on next page...

Continued from previous page...

Chain	Residue	Modelled	Actual	Comment	Reference
B	1203	ARG	LYS	conflict	UNP Q8VHX0
B	1205	LYS	GLN	conflict	UNP Q8VHX0
B	1208	THR	-	expression tag	UNP Q8VHX0
B	1209	GLY	-	expression tag	UNP Q8VHX0
B	1210	GLY	-	expression tag	UNP Q8VHX0
B	1211	LEU	-	expression tag	UNP Q8VHX0
B	1212	VAL	-	expression tag	UNP Q8VHX0
B	1213	PRO	-	expression tag	UNP Q8VHX0
B	1214	ARG	-	expression tag	UNP Q8VHX0
C	241	GLU	ASN	conflict	UNP P19491-2
C	382	LEU	VAL	conflict	UNP P19491-2
C	?	-	LEU	deletion	UNP P19491-2
C	?	-	THR	deletion	UNP P19491-2
C	?	-	GLU	deletion	UNP P19491-2
C	?	-	LEU	deletion	UNP P19491-2
C	?	-	PRO	deletion	UNP P19491-2
C	?	-	SER	deletion	UNP P19491-2
C	384	GLU	GLY	conflict	UNP P19491-2
C	385	ASP	ASN	conflict	UNP P19491-2
C	392	GLN	ASN	conflict	UNP P19491-2
C	999	GLY	-	linker	UNP P19491-2
C	1000	THR	-	linker	UNP P19491-2
C	1001	GLY	-	linker	UNP P19491-2
C	1002	LEU	-	linker	UNP P19491-2
C	1003	PHE	-	linker	UNP P19491-2
C	1007	VAL	ILE	conflict	UNP Q8VHX0
C	1011	LEU	ILE	conflict	UNP Q8VHX0
C	1040	LYS	ARG	conflict	UNP Q8VHX0
C	1044	VAL	THR	conflict	UNP Q8VHX0
C	1046	GLU	ASP	conflict	UNP Q8VHX0
C	1047	ASP	ASN	conflict	UNP Q8VHX0
C	1051	LYS	ARG	conflict	UNP Q8VHX0
C	1071	ASN	ALA	conflict	UNP Q8VHX0
C	1073	LYS	ARG	conflict	UNP Q8VHX0
C	1075	LEU	VAL	conflict	UNP Q8VHX0
C	1078	GLN	LYS	conflict	UNP Q8VHX0
C	1090	ALA	GLN	conflict	UNP Q8VHX0
C	1096	PHE	LEU	conflict	UNP Q8VHX0
C	1105	ILE	VAL	conflict	UNP Q8VHX0
C	1112	ILE	THR	conflict	UNP Q8VHX0
C	1116	MET	PHE	conflict	UNP Q8VHX0
C	1121	ILE	VAL	conflict	UNP Q8VHX0

Continued on next page...

Continued from previous page...

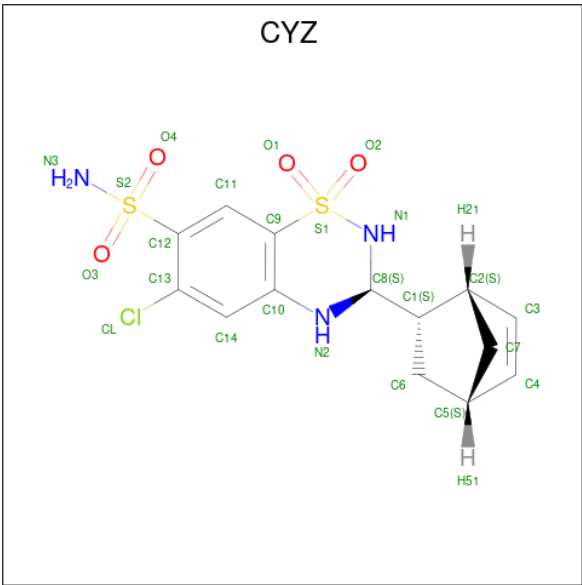
Chain	Residue	Modelled	Actual	Comment	Reference
C	1127	TYR	HIS	conflict	UNP Q8VHX0
C	1128	LYS	ARG	conflict	UNP Q8VHX0
C	1129	THR	SER	conflict	UNP Q8VHX0
C	1132	ASN	SER	conflict	UNP Q8VHX0
C	1133	ILE	VAL	conflict	UNP Q8VHX0
C	1164	SER	GLY	conflict	UNP Q8VHX0
C	1165	LYS	GLN	conflict	UNP Q8VHX0
C	1166	SER	ARG	conflict	UNP Q8VHX0
C	1171	ASN	-	insertion	UNP Q8VHX0
C	1184	LEU	PHE	conflict	UNP Q8VHX0
C	1191	MET	ILE	conflict	UNP Q8VHX0
C	1195	LEU	VAL	conflict	UNP Q8VHX0
C	1199	MET	ILE	conflict	UNP Q8VHX0
C	1200	PHE	TYR	conflict	UNP Q8VHX0
C	1202	ASP	GLU	conflict	UNP Q8VHX0
C	1203	ARG	LYS	conflict	UNP Q8VHX0
C	1205	LYS	GLN	conflict	UNP Q8VHX0
C	1208	THR	-	expression tag	UNP Q8VHX0
C	1209	GLY	-	expression tag	UNP Q8VHX0
C	1210	GLY	-	expression tag	UNP Q8VHX0
C	1211	LEU	-	expression tag	UNP Q8VHX0
C	1212	VAL	-	expression tag	UNP Q8VHX0
C	1213	PRO	-	expression tag	UNP Q8VHX0
C	1214	ARG	-	expression tag	UNP Q8VHX0
D	241	GLU	ASN	conflict	UNP P19491-2
D	382	LEU	VAL	conflict	UNP P19491-2
D	?	-	LEU	deletion	UNP P19491-2
D	?	-	THR	deletion	UNP P19491-2
D	?	-	GLU	deletion	UNP P19491-2
D	?	-	LEU	deletion	UNP P19491-2
D	?	-	PRO	deletion	UNP P19491-2
D	?	-	SER	deletion	UNP P19491-2
D	384	GLU	GLY	conflict	UNP P19491-2
D	385	ASP	ASN	conflict	UNP P19491-2
D	392	GLN	ASN	conflict	UNP P19491-2
D	999	GLY	-	linker	UNP P19491-2
D	1000	THR	-	linker	UNP P19491-2
D	1001	GLY	-	linker	UNP P19491-2
D	1002	LEU	-	linker	UNP P19491-2
D	1003	PHE	-	linker	UNP P19491-2
D	1007	VAL	ILE	conflict	UNP Q8VHX0
D	1011	LEU	ILE	conflict	UNP Q8VHX0

Continued on next page...

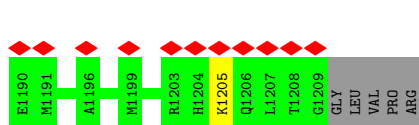
Continued from previous page...

Chain	Residue	Modelled	Actual	Comment	Reference
D	1040	LYS	ARG	conflict	UNP Q8VHX0
D	1044	VAL	THR	conflict	UNP Q8VHX0
D	1046	GLU	ASP	conflict	UNP Q8VHX0
D	1047	ASP	ASN	conflict	UNP Q8VHX0
D	1051	LYS	ARG	conflict	UNP Q8VHX0
D	1071	ASN	ALA	conflict	UNP Q8VHX0
D	1073	LYS	ARG	conflict	UNP Q8VHX0
D	1075	LEU	VAL	conflict	UNP Q8VHX0
D	1078	GLN	LYS	conflict	UNP Q8VHX0
D	1090	ALA	GLN	conflict	UNP Q8VHX0
D	1096	PHE	LEU	conflict	UNP Q8VHX0
D	1105	ILE	VAL	conflict	UNP Q8VHX0
D	1112	ILE	THR	conflict	UNP Q8VHX0
D	1116	MET	PHE	conflict	UNP Q8VHX0
D	1121	ILE	VAL	conflict	UNP Q8VHX0
D	1127	TYR	HIS	conflict	UNP Q8VHX0
D	1128	LYS	ARG	conflict	UNP Q8VHX0
D	1129	THR	SER	conflict	UNP Q8VHX0
D	1132	ASN	SER	conflict	UNP Q8VHX0
D	1133	ILE	VAL	conflict	UNP Q8VHX0
D	1164	SER	GLY	conflict	UNP Q8VHX0
D	1165	LYS	GLN	conflict	UNP Q8VHX0
D	1166	SER	ARG	conflict	UNP Q8VHX0
D	1171	ASN	-	insertion	UNP Q8VHX0
D	1184	LEU	PHE	conflict	UNP Q8VHX0
D	1191	MET	ILE	conflict	UNP Q8VHX0
D	1195	LEU	VAL	conflict	UNP Q8VHX0
D	1199	MET	ILE	conflict	UNP Q8VHX0
D	1200	PHE	TYR	conflict	UNP Q8VHX0
D	1202	ASP	GLU	conflict	UNP Q8VHX0
D	1203	ARG	LYS	conflict	UNP Q8VHX0
D	1205	LYS	GLN	conflict	UNP Q8VHX0
D	1208	THR	-	expression tag	UNP Q8VHX0
D	1209	GLY	-	expression tag	UNP Q8VHX0
D	1210	GLY	-	expression tag	UNP Q8VHX0
D	1211	LEU	-	expression tag	UNP Q8VHX0
D	1212	VAL	-	expression tag	UNP Q8VHX0
D	1213	PRO	-	expression tag	UNP Q8VHX0
D	1214	ARG	-	expression tag	UNP Q8VHX0

- Molecule 2 is CYCLOTHIAZIDE (three-letter code: CYZ) (formula: C₁₄H₁₆ClN₃O₄S₂) (labeled as "Ligand of Interest" by depositor).

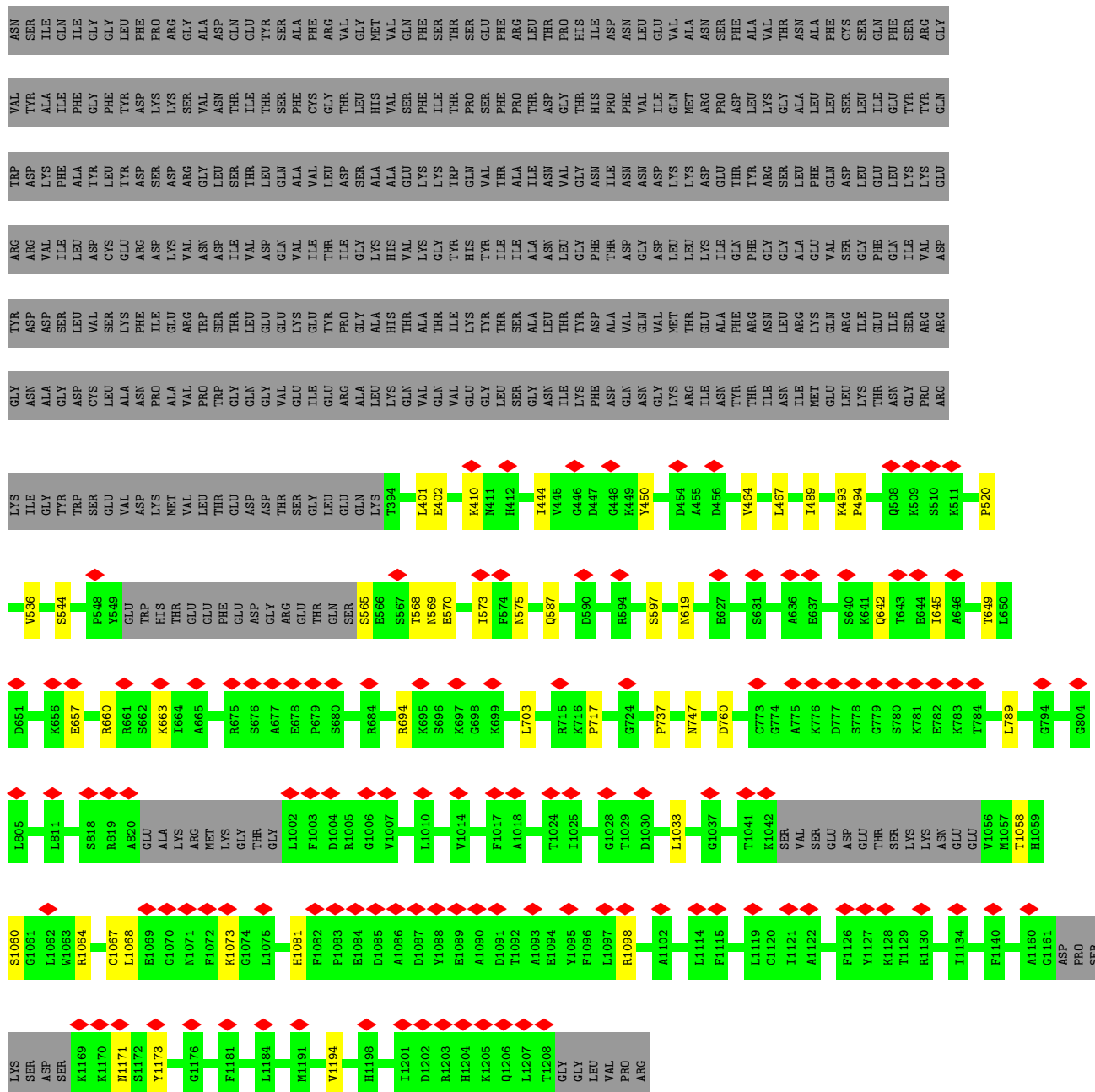


Mol	Chain	Residues	Atoms						AltConf
2	A	1	Total	C	Cl	N	O	S	0
			24	14	1	3	4	2	
2	B	1	Total	C	Cl	N	O	S	0
			24	14	1	3	4	2	
2	C	1	Total	C	Cl	N	O	S	0
			24	14	1	3	4	2	
2	D	1	Total	C	Cl	N	O	S	0
			24	14	1	3	4	2	



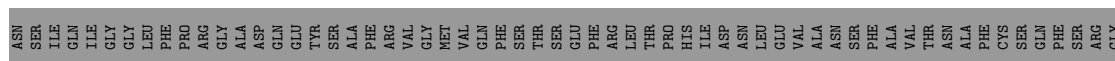
- Molecule 1: Isoform Flip of Glutamate receptor 2, Voltage-dependent calcium channel gamma-3 subunit chimera

Chain C: 



- Molecule 1: Isoform Flip of Glutamate receptor 2, Voltage-dependent calcium channel gamma-3 subunit chimera

Chain D: 



K1205	Q1206	L1207	L1208	G1209	GLY	LEU	VAL	PRO	ARG	F1115	M1116	G1117	G1118	A1122	A1123	S1124	E1125	F1126	Y1127	K1128	T1129	R1130	H1131	I1132	I1133	I1134	L1135	S1136	A1137	F1141	A1144	S1147	I1153	N1159	A1160	G1161	ASP	PRO	SER	LYS	ASP	LEU	K1169	K1170	N1171	S1172	Y1173	F1181	I1187	E1190	V1194	M1199	F1200	I1201	D1202	H1204											
T1041	K1042	VAL	SER	GLU	ASP	GLU	THR	SER	LYS	ASN	GLU	GLU	G779	Q642	T643	E644	K781	T645	A646	L803	A806	V809	A810	L811	I812	S818	R819	A820	ALA	LYS	ARG	MET	LYS	GLY	THR	G1069	G1070	N1071	F1072	K1073	G1074	L1075	C1076	K1077	D1080	H1081	F1082	P1083	E1084	D1085	A1086	D1087	Y1088	E1089	A1090	D1091	T1092	A1093	E1094	Y1095	F1096	R1101	A1102	S1103	S1104	L1113	L1114
G779	S780	K781	E782	L803	A806	V809	A810	L811	I812	S818	R819	A820	ALA	LYS	ARG	MET	LYS	GLY	THR	G1069	G1070	N1071	F1072	K1073	G1074	L1075	C1076	K1077	D1080	H1081	F1082	P1083	E1084	D1085	A1086	D1087	Y1088	E1089	A1090	D1091	T1092	A1093	E1094	Y1095	F1096	R1101	A1102	S1103	S1104	L1113	L1114																
G779	S780	K781	E782	L803	A806	V809	A810	L811	I812	S818	R819	A820	ALA	LYS	ARG	MET	LYS	GLY	THR	G1069	G1070	N1071	F1072	K1073	G1074	L1075	C1076	K1077	D1080	H1081	F1082	P1083	E1084	D1085	A1086	D1087	Y1088	E1089	A1090	D1091	T1092	A1093	E1094	Y1095	F1096	R1101	A1102	S1103	S1104	L1113	L1114																
G779	S780	K781	E782	L803	A806	V809	A810	L811	I812	S818	R819	A820	ALA	LYS	ARG	MET	LYS	GLY	THR	G1069	G1070	N1071	F1072	K1073	G1074	L1075	C1076	K1077	D1080	H1081	F1082	P1083	E1084	D1085	A1086	D1087	Y1088	E1089	A1090	D1091	T1092	A1093	E1094	Y1095	F1096	R1101	A1102	S1103	S1104	L1113	L1114																
G779	S780	K781	E782	L803	A806	V809	A810	L811	I812	S818	R819	A820	ALA	LYS	ARG	MET	LYS	GLY	THR	G1069	G1070	N1071	F1072	K1073	G1074	L1075	C1076	K1077	D1080	H1081	F1082	P1083	E1084	D1085	A1086	D1087	Y1088	E1089	A1090	D1091	T1092	A1093	E1094	Y1095	F1096	R1101	A1102	S1103	S1104	L1113	L1114																
G779	S780	K781	E782	L803	A806	V809	A810	L811	I812	S818	R819	A820	ALA	LYS	ARG	MET	LYS	GLY	THR	G1069	G1070	N1071	F1072	K1073	G1074	L1075	C1076	K1077	D1080	H1081	F1082	P1083	E1084	D1085	A1086	D1087	Y1088	E1089	A1090	D1091	T1092	A1093	E1094	Y1095	F1096	R1101	A1102	S1103	S1104	L1113	L1114																
G779	S780	K781	E782	L803	A806	V809	A810	L811	I812	S818	R819	A820	ALA	LYS	ARG	MET	LYS	GLY	THR	G1069	G1070	N1071	F1072	K1073	G1074	L1075	C1076	K1077	D1080	H1081	F1082	P1083	E1084	D1085	A1086	D1087	Y1088	E1089	A1090	D1091	T1092	A1093	E1094	Y1095	F1096	R1101	A1102	S1103	S1104	L1113	L1114																
G779	S780	K781	E782	L803	A806	V809	A810	L811	I812	S818	R819	A820	ALA	LYS	ARG	MET	LYS	GLY	THR	G1069	G1070	N1071	F1072	K1073	G1074	L1075	C1076	K1077	D1080	H1081	F1082	P1083	E1084	D1085	A1086	D1087	Y1088	E1089	A1090	D1091	T1092	A1093	E1094	Y1095	F1096	R																					

4 Experimental information

Property	Value	Source
EM reconstruction method	SINGLE PARTICLE	Depositor
Imposed symmetry	POINT, Not provided	
Number of particles used	49098	Depositor
Resolution determination method	FSC 0.143 CUT-OFF	Depositor
CTF correction method	PHASE FLIPPING ONLY	Depositor
Microscope	FEI TITAN KRIOS	Depositor
Voltage (kV)	300	Depositor
Electron dose ($e^-/\text{\AA}^2$)	58.5	Depositor
Minimum defocus (nm)	1000	Depositor
Maximum defocus (nm)	2500	Depositor
Magnification	Not provided	
Image detector	GATAN K3 (6k x 4k)	Depositor
Maximum map value	0.082	Depositor
Minimum map value	-0.043	Depositor
Average map value	0.000	Depositor
Map value standard deviation	0.002	Depositor
Recommended contour level	0.015	Depositor
Map size (\AA)	265.6, 265.6, 265.6	wwPDB
Map dimensions	320, 320, 320	wwPDB
Map angles ($^\circ$)	90.0, 90.0, 90.0	wwPDB
Pixel spacing (\AA)	0.83000004, 0.83000004, 0.83000004	Depositor

5 Model quality [i](#)

5.1 Standard geometry [i](#)

Bond lengths and bond angles in the following residue types are not validated in this section: CYZ

The Z score for a bond length (or angle) is the number of standard deviations the observed value is removed from the expected value. A bond length (or angle) with $|Z| > 5$ is considered an outlier worth inspection. RMSZ is the root-mean-square of all Z scores of the bond lengths (or angles).

Mol	Chain	Bond lengths		Bond angles	
		RMSZ	$\# Z > 5$	RMSZ	$\# Z > 5$
1	A	0.31	0/4772	0.53	0/6440
1	B	0.33	0/4791	0.53	1/6465 (0.0%)
1	C	0.31	0/4772	0.53	0/6440
1	D	0.33	0/4791	0.53	1/6465 (0.0%)
All	All	0.32	0/19126	0.53	2/25810 (0.0%)

There are no bond length outliers.

All (2) bond angle outliers are listed below:

Mol	Chain	Res	Type	Atoms	Z	Observed(°)	Ideal(°)
1	B	1068	LEU	CA-CB-CG	5.03	126.87	115.30
1	D	1068	LEU	CA-CB-CG	5.02	126.84	115.30

There are no chirality outliers.

There are no planarity outliers.

5.2 Too-close contacts [i](#)

In the following table, the Non-H and H(model) columns list the number of non-hydrogen atoms and hydrogen atoms in the chain respectively. The H(added) column lists the number of hydrogen atoms added and optimized by MolProbity. The Clashes column lists the number of clashes within the asymmetric unit, whereas Symm-Clashes lists symmetry-related clashes.

Mol	Chain	Non-H	H(model)	H(added)	Clashes	Symm-Clashes
1	A	4669	0	4703	33	0
1	B	4688	0	4719	38	0
1	C	4669	0	4703	31	0
1	D	4688	0	4719	38	0
2	A	24	0	16	5	0

Continued on next page...

Continued from previous page...

Mol	Chain	Non-H	H(model)	H(added)	Clashes	Symm-Clashes
2	B	24	0	16	7	0
2	C	24	0	16	6	0
2	D	24	0	16	6	0
All	All	18810	0	18908	133	0

The all-atom clashscore is defined as the number of clashes found per 1000 atoms (including hydrogen atoms). The all-atom clashscore for this structure is 4.

All (133) close contacts within the same asymmetric unit are listed below, sorted by their clash magnitude.

Atom-1	Atom-2	Interatomic distance (Å)	Clash overlap (Å)
1:A:565:SER:N	1:A:568:THR:HG1	1.67	0.93
1:C:565:SER:N	1:C:568:THR:HG1	1.66	0.93
1:C:760:ASP:OD1	2:C:1301:CYZ:CL	2.29	0.86
1:A:493:LYS:HB3	2:A:1301:CYZ:H41	1.69	0.74
1:A:760:ASP:OD1	2:A:1301:CYZ:CL	2.44	0.73
1:C:493:LYS:HB3	2:C:1301:CYZ:H41	1.69	0.72
1:D:751:LEU:HD21	2:D:1301:CYZ:H71	1.73	0.70
1:B:729:SER:HB3	2:C:1301:CYZ:C14	2.23	0.68
2:B:1301:CYZ:H31A	1:C:494:PRO:HG3	1.76	0.68
1:B:760:ASP:N	2:B:1301:CYZ:CL	2.67	0.64
1:D:1029:THR:HG22	1:D:1031:TYR:H	1.63	0.63
2:C:1301:CYZ:CL	2:C:1301:CYZ:N3	2.68	0.63
1:B:1029:THR:HG22	1:B:1031:TYR:H	1.63	0.63
1:C:493:LYS:HB3	2:C:1301:CYZ:C4	2.29	0.62
2:A:1301:CYZ:CL	2:A:1301:CYZ:N3	2.68	0.62
1:A:493:LYS:HB3	2:A:1301:CYZ:C4	2.29	0.61
1:A:494:PRO:HG3	2:D:1301:CYZ:H31A	1.81	0.61
1:A:520:PRO:O	1:A:619:ASN:ND2	2.34	0.60
1:B:715:ARG:NH2	1:B:770:LYS:O	2.35	0.60
1:C:520:PRO:O	1:C:619:ASN:ND2	2.34	0.60
1:C:536:VAL:HG22	1:D:803:LEU:HD21	1.84	0.59
1:A:1033:LEU:HD11	1:A:1173:TYR:HB2	1.85	0.59
1:A:570:GLU:O	1:A:575:ASN:ND2	2.36	0.58
1:D:715:ARG:NH2	1:D:770:LYS:O	2.35	0.58
1:C:570:GLU:O	1:C:575:ASN:ND2	2.37	0.58
1:D:418:ASN:ND2	1:D:440:TYR:O	2.35	0.58
1:B:751:LEU:HD21	2:B:1301:CYZ:H71	1.86	0.58
1:B:1153:ILE:HG23	1:C:789:LEU:HD11	1.85	0.58
1:C:1033:LEU:HD11	1:C:1173:TYR:HB2	1.85	0.57
2:A:1301:CYZ:C14	1:D:729:SER:HB3	2.34	0.57

Continued on next page...

Continued from previous page...

Atom-1	Atom-2	Interatomic distance (Å)	Clash overlap (Å)
1:A:401:LEU:HD23	1:A:444:ILE:HG21	1.87	0.56
1:B:418:ASN:ND2	1:B:440:TYR:O	2.35	0.56
1:C:401:LEU:HD23	1:C:444:ILE:HG21	1.87	0.56
1:A:489:ILE:HG22	1:A:737:PRO:HA	1.89	0.55
1:D:760:ASP:N	2:D:1301:CYZ:CL	2.77	0.55
1:B:1030:ASP:HB3	1:B:1064:ARG:HG3	1.89	0.55
1:C:489:ILE:HG22	1:C:737:PRO:HA	1.89	0.54
1:C:657:GLU:OE1	1:C:660:ARG:NH2	2.41	0.54
1:B:753:LEU:O	1:B:758:VAL:N	2.39	0.54
1:C:649:THR:HG22	1:C:703:LEU:HB2	1.90	0.54
1:A:649:THR:HG22	1:A:703:LEU:HB2	1.90	0.53
2:B:1301:CYZ:C3	1:C:494:PRO:HG3	2.37	0.53
1:D:1030:ASP:HB3	1:D:1064:ARG:HG3	1.89	0.53
1:A:1068:LEU:HA	1:A:1073:LYS:HG3	1.91	0.53
1:A:657:GLU:OE1	1:A:660:ARG:NH2	2.41	0.53
1:A:796:PHE:HB3	1:D:1153:ILE:HD13	1.91	0.53
1:B:521:LEU:HD23	1:B:616:TYR:HD1	1.75	0.52
1:B:1036:ARG:NH2	1:B:1057:MET:SD	2.83	0.52
1:A:536:VAL:HG22	1:B:803:LEU:HD21	1.92	0.52
1:D:521:LEU:HD23	1:D:616:TYR:HD1	1.75	0.52
1:B:760:ASP:CA	2:B:1301:CYZ:CL	2.95	0.52
1:D:753:LEU:O	1:D:758:VAL:N	2.39	0.52
1:C:1068:LEU:HA	1:C:1073:LYS:HG3	1.91	0.51
1:A:694:ARG:HH12	1:A:717:PRO:HD2	1.76	0.51
1:B:498:LEU:HD12	1:B:705:GLU:HB3	1.93	0.51
1:A:494:PRO:HG3	2:D:1301:CYZ:C3	2.41	0.51
1:C:1033:LEU:HB3	1:C:1060:SER:HB3	1.92	0.51
1:D:1036:ARG:NH2	1:D:1057:MET:SD	2.83	0.51
1:D:638:ASP:O	1:D:642:GLN:NE2	2.44	0.50
1:A:1033:LEU:HB3	1:A:1060:SER:HB3	1.92	0.50
1:C:597:SER:OG	1:D:806:ALA:O	2.25	0.50
1:D:685:THR:HG23	1:D:688:GLU:H	1.77	0.50
1:C:694:ARG:HH12	1:C:717:PRO:HD2	1.76	0.50
1:B:638:ASP:O	1:B:642:GLN:NE2	2.44	0.50
1:B:685:THR:HG23	1:B:688:GLU:H	1.77	0.50
1:D:498:LEU:HD12	1:D:705:GLU:HB3	1.93	0.50
1:A:1081:HIS:HB2	1:A:1098:ARG:HB2	1.93	0.50
1:C:1081:HIS:HB2	1:C:1098:ARG:HB2	1.93	0.49
1:B:1066:CYS:HA	1:B:1076:CYS:HA	1.93	0.49
1:C:464:VAL:HG13	1:C:489:ILE:HG12	1.94	0.49
1:B:646:ALA:N	1:B:699:LYS:O	2.46	0.49

Continued on next page...

Continued from previous page...

Atom-1	Atom-2	Interatomic distance (Å)	Clash overlap (Å)
1:D:1066:CYS:HA	1:D:1076:CYS:HA	1.93	0.49
2:D:1301:CYZ:CL	2:D:1301:CYZ:O4	2.68	0.49
1:D:409:LYS:NZ	1:D:422:GLU:OE1	2.36	0.49
1:C:565:SER:N	1:C:568:THR:OG1	2.41	0.48
1:B:492:SER:O	1:C:493:LYS:NZ	2.40	0.48
2:B:1301:CYZ:CL	2:B:1301:CYZ:O4	2.67	0.48
1:A:1058:THR:HA	1:A:1067:CYS:HA	1.96	0.48
1:A:1058:THR:HG22	1:A:1067:CYS:HB3	1.96	0.48
1:A:464:VAL:HG13	1:A:489:ILE:HG12	1.94	0.48
1:C:642:GLN:HE22	1:C:645:ILE:HB	1.79	0.48
1:D:646:ALA:N	1:D:699:LYS:O	2.46	0.48
1:C:1058:THR:HA	1:C:1067:CYS:HA	1.96	0.47
1:B:729:SER:HB3	2:C:1301:CYZ:C10	2.44	0.47
1:B:1039:CYS:HB3	1:B:1067:CYS:HB3	1.78	0.47
1:A:642:GLN:HE22	1:A:645:ILE:HB	1.79	0.47
1:B:445:VAL:HG13	1:B:448:GLY:H	1.80	0.47
1:C:1058:THR:HG22	1:C:1067:CYS:HB3	1.96	0.47
1:A:803:LEU:HD21	1:D:536:VAL:HG22	1.97	0.46
1:D:445:VAL:HG13	1:D:448:GLY:H	1.80	0.46
1:D:593:PRO:O	1:D:599:ARG:NH2	2.49	0.46
1:A:464:VAL:HA	1:A:467:LEU:HD12	1.97	0.46
1:D:643:THR:O	1:D:673:TYR:OH	2.29	0.46
1:C:544:SER:O	1:C:569:ASN:ND2	2.49	0.46
1:D:1101:ARG:O	1:D:1104:SER:OG	2.33	0.46
1:A:544:SER:O	1:A:569:ASN:ND2	2.49	0.46
1:B:593:PRO:O	1:B:599:ARG:NH2	2.49	0.46
1:B:1101:ARG:O	1:B:1104:SER:OG	2.33	0.46
1:A:505:LYS:HZ2	1:A:697:LYS:HA	1.80	0.45
1:B:1033:LEU:HD11	1:B:1173:TYR:HB2	1.98	0.45
1:C:464:VAL:HA	1:C:467:LEU:HD12	1.97	0.45
1:D:1033:LEU:HD11	1:D:1173:TYR:HB2	1.98	0.45
1:B:500:ILE:HG12	1:B:655:THR:HG22	1.98	0.45
1:D:635:SER:H	1:D:638:ASP:HB2	1.82	0.45
1:B:649:THR:HG22	1:B:703:LEU:HB2	1.98	0.45
1:C:573:ILE:HD12	1:C:1194:VAL:HG11	1.99	0.45
1:D:500:ILE:HG12	1:D:655:THR:HG22	1.98	0.45
1:D:649:THR:HG22	1:D:703:LEU:HB2	1.98	0.45
1:B:635:SER:H	1:B:638:ASP:HB2	1.82	0.45
1:D:751:LEU:CD2	2:D:1301:CYZ:H71	2.44	0.45
1:A:402:GLU:OE1	1:A:450:TYR:OH	2.34	0.44
1:A:587:GLN:HE22	1:D:586:GLN:HG2	1.82	0.44

Continued on next page...

Continued from previous page...

Atom-1	Atom-2	Interatomic distance (Å)	Clash overlap (Å)
1:B:1084:GLU:HG3	1:B:1085:ASP:H	1.82	0.44
1:D:1039:CYS:HB3	1:D:1067:CYS:HB3	1.78	0.44
1:A:573:ILE:HD12	1:A:1194:VAL:HG11	1.99	0.44
1:C:402:GLU:OE1	1:C:450:TYR:OH	2.34	0.44
1:B:751:LEU:CD2	2:B:1301:CYZ:H71	2.47	0.44
1:B:809:VAL:HA	1:B:812:ILE:HG12	2.00	0.44
1:A:574:PHE:HZ	1:D:596:LEU:HA	1.83	0.44
1:D:1084:GLU:HG3	1:D:1085:ASP:H	1.82	0.44
1:D:402:GLU:OE1	1:D:450:TYR:OH	2.35	0.44
1:B:402:GLU:OE1	1:B:450:TYR:OH	2.35	0.44
1:D:809:VAL:HA	1:D:812:ILE:HG12	2.00	0.43
1:A:599:ARG:HB3	1:B:578:TRP:CZ3	2.54	0.41
1:D:1017:PHE:HA	1:D:1020:PHE:HB3	2.02	0.41
1:B:1017:PHE:O	1:B:1021:SER:N	2.52	0.41
1:B:606:TRP:CD1	1:C:587:GLN:HG3	2.56	0.41
1:D:1017:PHE:O	1:D:1021:SER:N	2.52	0.41
1:B:529:ILE:O	1:B:533:TYR:N	2.52	0.41
1:B:643:THR:O	1:B:673:TYR:OH	2.29	0.40
1:D:529:ILE:O	1:D:533:TYR:N	2.52	0.40
1:A:565:SER:N	1:A:568:THR:OG1	2.41	0.40
1:B:521:LEU:HD12	1:B:525:ILE:HG12	2.04	0.40

There are no symmetry-related clashes.

5.3 Torsion angles

5.3.1 Protein backbone

In the following table, the Percentiles column shows the percent Ramachandran outliers of the chain as a percentile score with respect to all PDB entries followed by that with respect to all EM entries.

The Analysed column shows the number of residues for which the backbone conformation was analysed, and the total number of residues.

Mol	Chain	Analysed	Favoured	Allowed	Outliers	Percentiles	
1	A	589/1033 (57%)	568 (96%)	21 (4%)	0	100	100
1	B	592/1033 (57%)	571 (96%)	21 (4%)	0	100	100
1	C	589/1033 (57%)	568 (96%)	21 (4%)	0	100	100
1	D	592/1033 (57%)	571 (96%)	21 (4%)	0	100	100

Continued on next page...

Continued from previous page...

Mol	Chain	Analysed	Favoured	Allowed	Outliers	Percentiles	
All	All	2362/4132 (57%)	2278 (96%)	84 (4%)	0	100	100

There are no Ramachandran outliers to report.

5.3.2 Protein sidechains ⓘ

In the following table, the Percentiles column shows the percent sidechain outliers of the chain as a percentile score with respect to all PDB entries followed by that with respect to all EM entries.

The Analysed column shows the number of residues for which the sidechain conformation was analysed, and the total number of residues.

Mol	Chain	Analysed	Rotameric	Outliers	Percentiles	
1	A	500/876 (57%)	495 (99%)	5 (1%)	73	81
1	B	502/876 (57%)	495 (99%)	7 (1%)	62	76
1	C	500/876 (57%)	495 (99%)	5 (1%)	73	81
1	D	502/876 (57%)	495 (99%)	7 (1%)	62	76
All	All	2004/3504 (57%)	1980 (99%)	24 (1%)	66	79

All (24) residues with a non-rotameric sidechain are listed below:

Mol	Chain	Res	Type
1	A	410	LYS
1	A	663	LYS
1	A	747	ASN
1	A	1064	ARG
1	A	1171	ASN
1	B	411	ASN
1	B	439	LYS
1	B	695	LYS
1	B	1005	ARG
1	B	1065	THR
1	B	1159	ASN
1	B	1205	LYS
1	C	410	LYS
1	C	663	LYS
1	C	747	ASN
1	C	1064	ARG
1	C	1171	ASN

Continued on next page...

Continued from previous page...

Mol	Chain	Res	Type
1	D	411	ASN
1	D	439	LYS
1	D	695	LYS
1	D	1005	ARG
1	D	1065	THR
1	D	1159	ASN
1	D	1205	LYS

Sometimes sidechains can be flipped to improve hydrogen bonding and reduce clashes. All (8) such sidechains are listed below:

Mol	Chain	Res	Type
1	A	747	ASN
1	A	1171	ASN
1	B	411	ASN
1	B	642	GLN
1	C	747	ASN
1	C	1171	ASN
1	D	411	ASN
1	D	642	GLN

5.3.3 RNA [i](#)

There are no RNA molecules in this entry.

5.4 Non-standard residues in protein, DNA, RNA chains [i](#)

There are no non-standard protein/DNA/RNA residues in this entry.

5.5 Carbohydrates [i](#)

There are no oligosaccharides in this entry.

5.6 Ligand geometry [i](#)

4 ligands are modelled in this entry.

In the following table, the Counts columns list the number of bonds (or angles) for which Mogul statistics could be retrieved, the number of bonds (or angles) that are observed in the model and the number of bonds (or angles) that are defined in the Chemical Component Dictionary. The

Link column lists molecule types, if any, to which the group is linked. The Z score for a bond length (or angle) is the number of standard deviations the observed value is removed from the expected value. A bond length (or angle) with $|Z| > 2$ is considered an outlier worth inspection. RMSZ is the root-mean-square of all Z scores of the bond lengths (or angles).

Mol	Type	Chain	Res	Link	Bond lengths			Bond angles		
					Counts	RMSZ	$\# Z > 2$	Counts	RMSZ	$\# Z > 2$
2	CYZ	C	1301	-	26,27,27	0.52	0	38,44,44	0.54	0
2	CYZ	D	1301	-	26,27,27	0.49	0	38,44,44	0.48	0
2	CYZ	B	1301	-	26,27,27	0.48	0	38,44,44	0.48	0
2	CYZ	A	1301	-	26,27,27	0.52	0	38,44,44	0.52	0

In the following table, the Chirals column lists the number of chiral outliers, the number of chiral centers analysed, the number of these observed in the model and the number defined in the Chemical Component Dictionary. Similar counts are reported in the Torsion and Rings columns. '-' means no outliers of that kind were identified.

Mol	Type	Chain	Res	Link	Chirals	Torsions	Rings
2	CYZ	C	1301	-	-	6/7/42/42	0/5/4/4
2	CYZ	D	1301	-	-	7/7/42/42	0/5/4/4
2	CYZ	B	1301	-	-	7/7/42/42	0/5/4/4
2	CYZ	A	1301	-	-	7/7/42/42	0/5/4/4

There are no bond length outliers.

There are no bond angle outliers.

There are no chirality outliers.

All (27) torsion outliers are listed below:

Mol	Chain	Res	Type	Atoms
2	A	1301	CYZ	C6-C1-C8-N2
2	A	1301	CYZ	C11-C12-S2-N3
2	A	1301	CYZ	C13-C12-S2-O3
2	A	1301	CYZ	C13-C12-S2-O4
2	A	1301	CYZ	C13-C12-S2-N3
2	B	1301	CYZ	C6-C1-C8-N2
2	B	1301	CYZ	C13-C12-S2-O3
2	B	1301	CYZ	C13-C12-S2-O4
2	B	1301	CYZ	C13-C12-S2-N3
2	C	1301	CYZ	C11-C12-S2-N3
2	C	1301	CYZ	C13-C12-S2-O3
2	C	1301	CYZ	C13-C12-S2-O4
2	C	1301	CYZ	C13-C12-S2-N3

Continued on next page...

Continued from previous page...

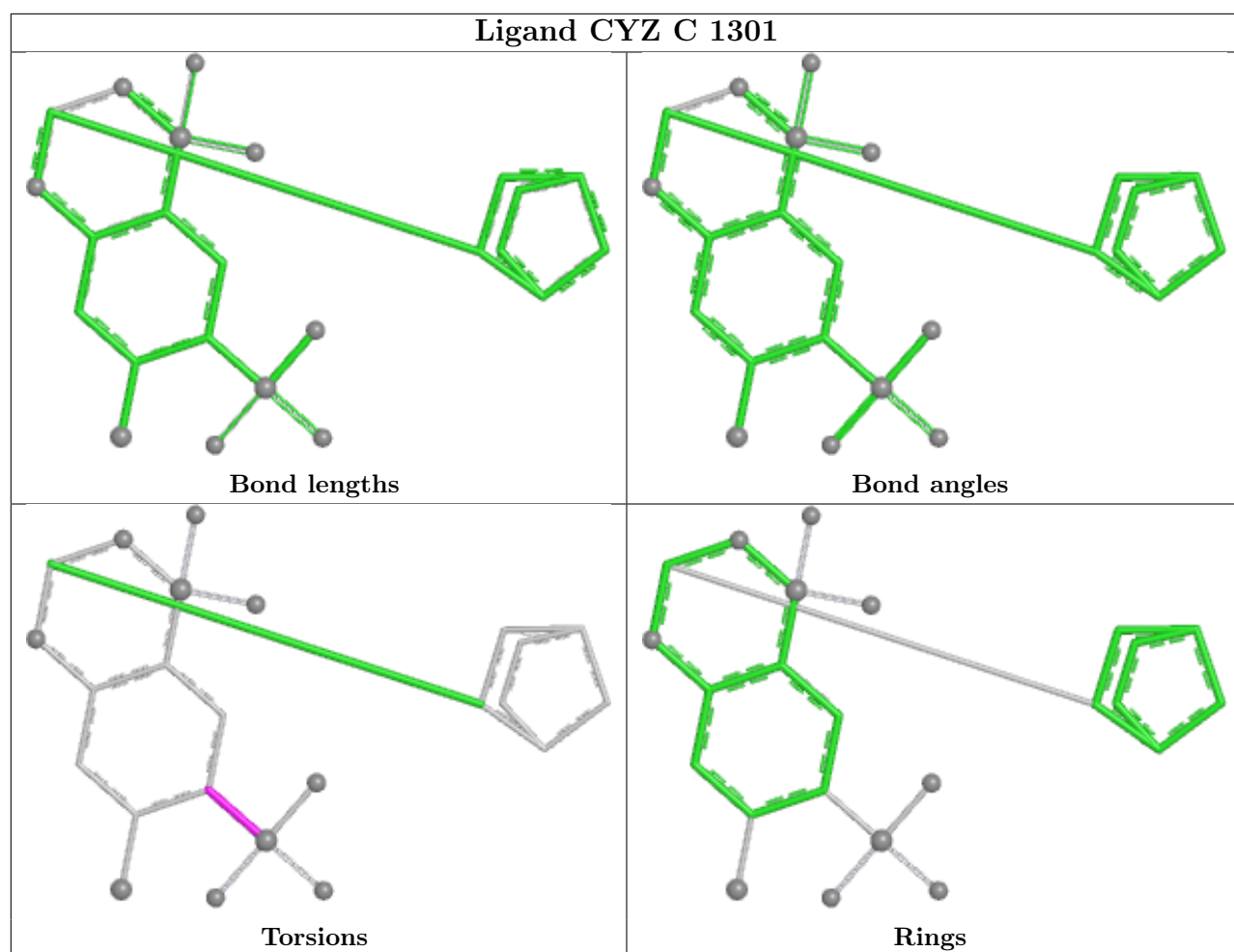
Mol	Chain	Res	Type	Atoms
2	D	1301	CYZ	C6-C1-C8-N2
2	D	1301	CYZ	C13-C12-S2-O3
2	D	1301	CYZ	C13-C12-S2-O4
2	D	1301	CYZ	C13-C12-S2-N3
2	A	1301	CYZ	C11-C12-S2-O4
2	A	1301	CYZ	C11-C12-S2-O3
2	C	1301	CYZ	C11-C12-S2-O3
2	C	1301	CYZ	C11-C12-S2-O4
2	B	1301	CYZ	C11-C12-S2-O3
2	B	1301	CYZ	C11-C12-S2-O4
2	D	1301	CYZ	C11-C12-S2-O4
2	D	1301	CYZ	C11-C12-S2-O3
2	B	1301	CYZ	C11-C12-S2-N3
2	D	1301	CYZ	C11-C12-S2-N3

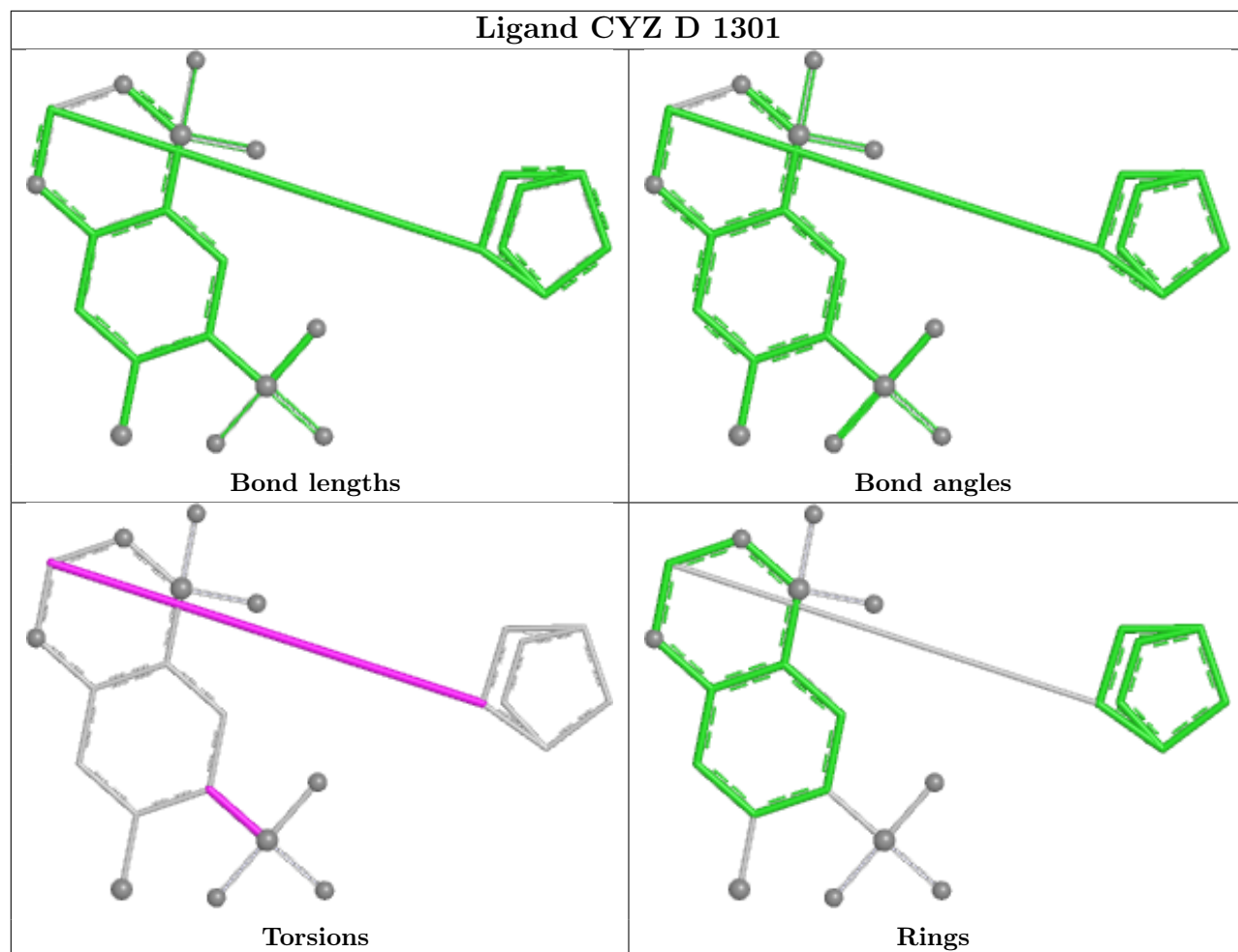
There are no ring outliers.

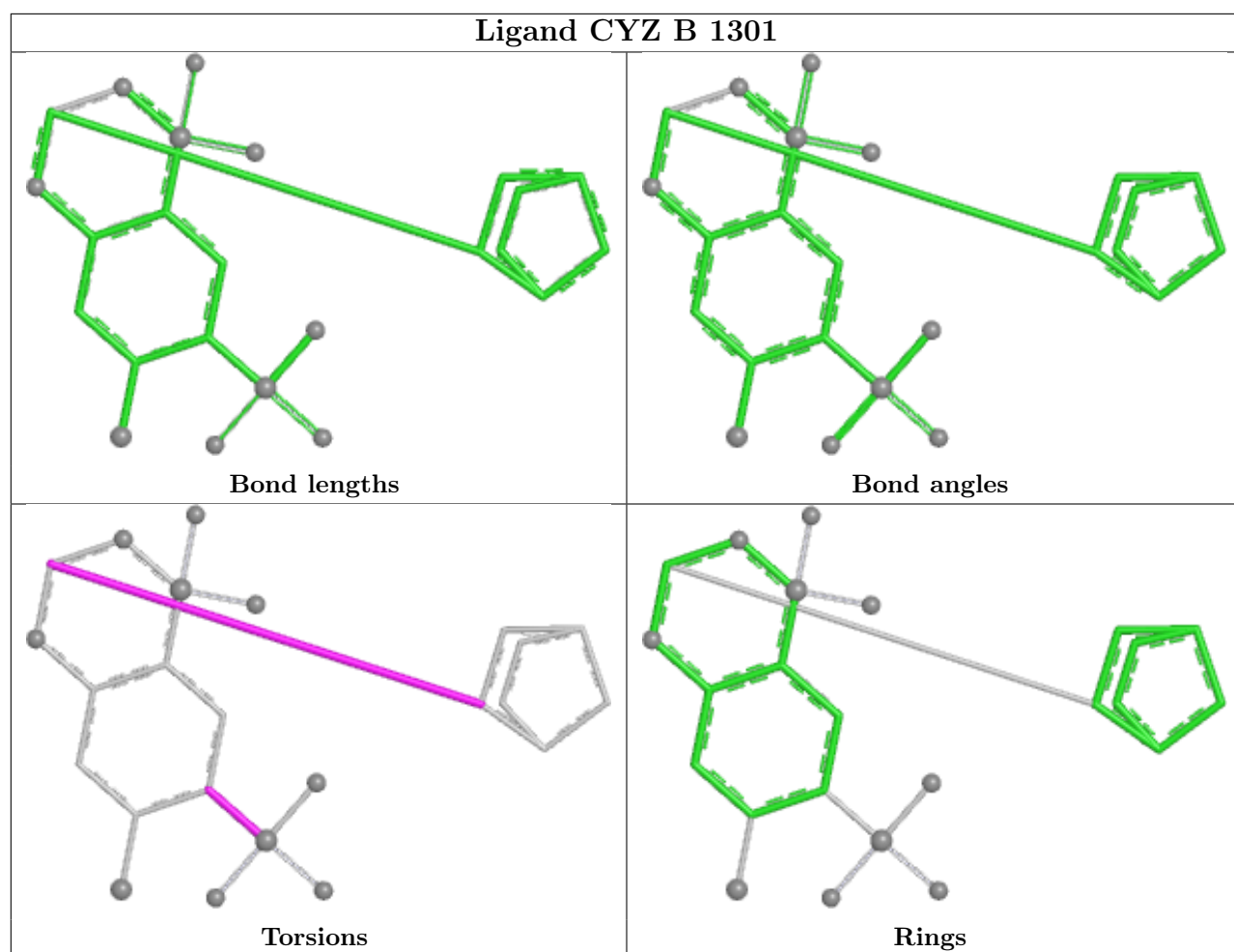
4 monomers are involved in 24 short contacts:

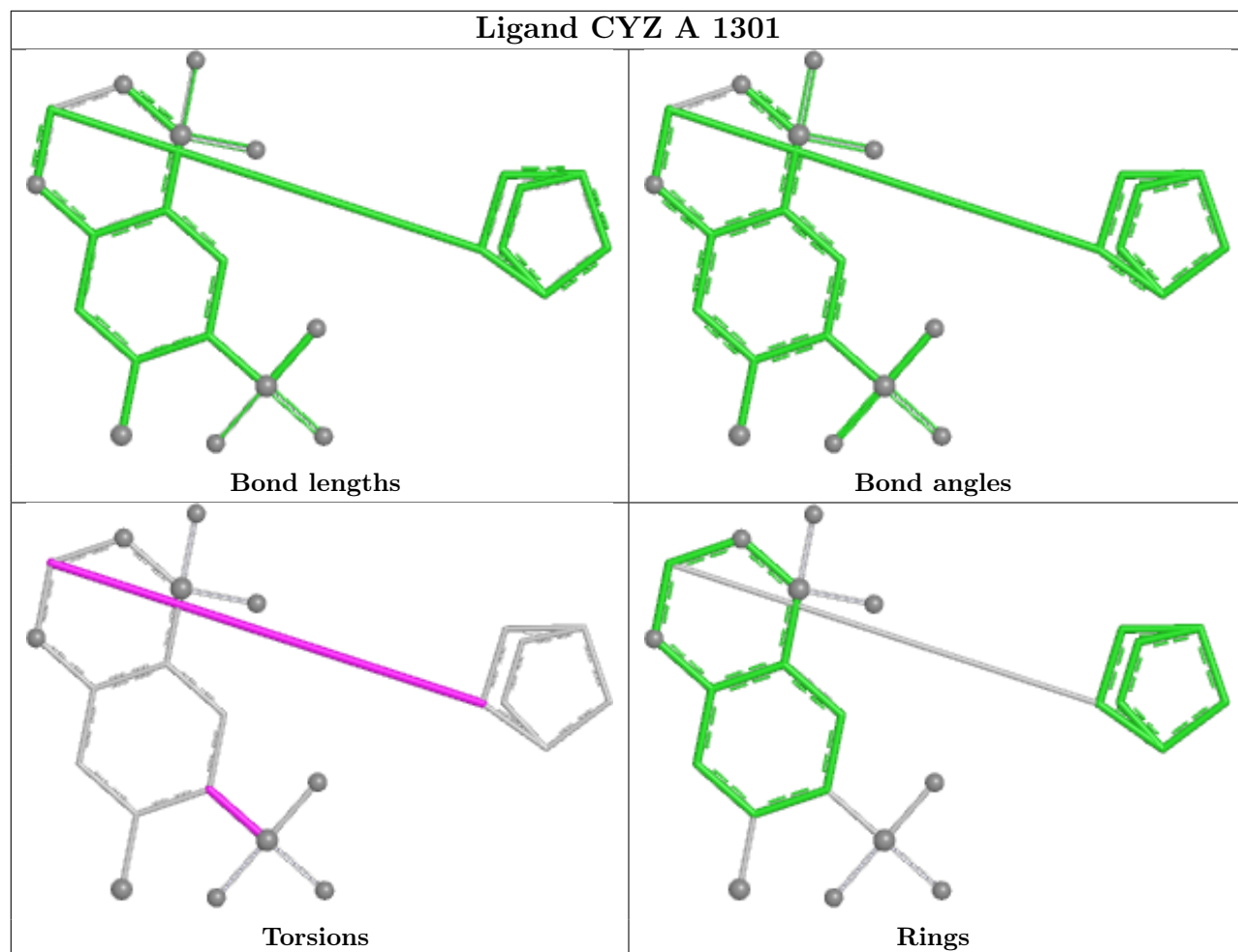
Mol	Chain	Res	Type	Clashes	Symm-Clashes
2	C	1301	CYZ	6	0
2	D	1301	CYZ	6	0
2	B	1301	CYZ	7	0
2	A	1301	CYZ	5	0

The following is a two-dimensional graphical depiction of Mogul quality analysis of bond lengths, bond angles, torsion angles, and ring geometry for all instances of the Ligand of Interest. In addition, ligands with molecular weight > 250 and outliers as shown on the validation Tables will also be included. For torsion angles, if less than 5% of the Mogul distribution of torsion angles is within 10 degrees of the torsion angle in question, then that torsion angle is considered an outlier. Any bond that is central to one or more torsion angles identified as an outlier by Mogul will be highlighted in the graph. For rings, the root-mean-square deviation (RMSD) between the ring in question and similar rings identified by Mogul is calculated over all ring torsion angles. If the average RMSD is greater than 60 degrees and the minimal RMSD between the ring in question and any Mogul-identified rings is also greater than 60 degrees, then that ring is considered an outlier. The outliers are highlighted in purple. The color gray indicates Mogul did not find sufficient equivalents in the CSD to analyse the geometry.









5.7 Other polymers [i](#)

There are no such residues in this entry.

5.8 Polymer linkage issues [i](#)

There are no chain breaks in this entry.

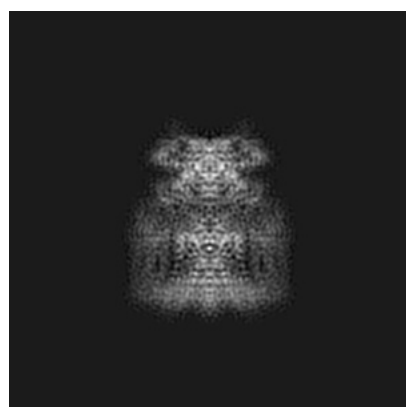
6 Map visualisation [i](#)

This section contains visualisations of the EMDB entry EMD-26011. These allow visual inspection of the internal detail of the map and identification of artifacts.

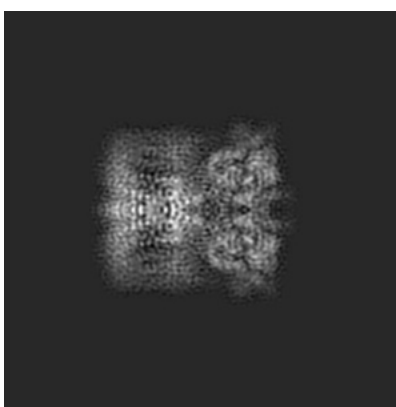
No raw map or half-maps were deposited for this entry and therefore no images, graphs, etc. pertaining to the raw map can be shown.

6.1 Orthogonal projections [i](#)

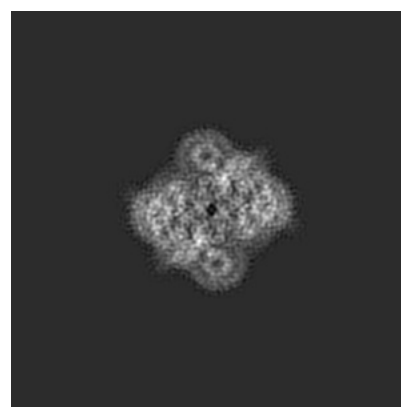
6.1.1 Primary map



X



Y

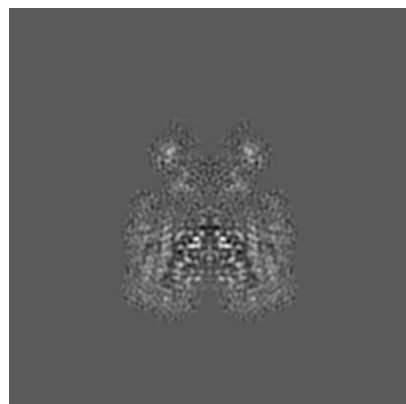


Z

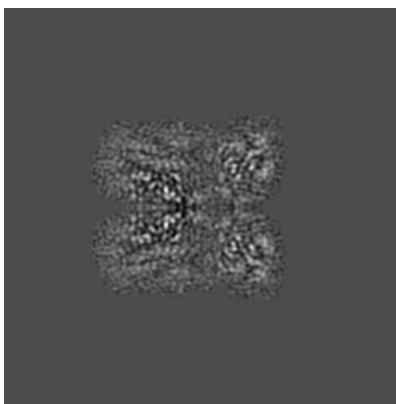
The images above show the map projected in three orthogonal directions.

6.2 Central slices [i](#)

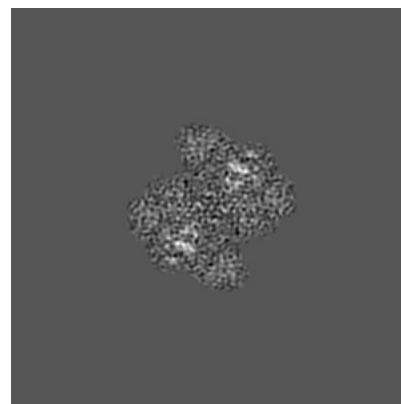
6.2.1 Primary map



X Index: 160



Y Index: 160

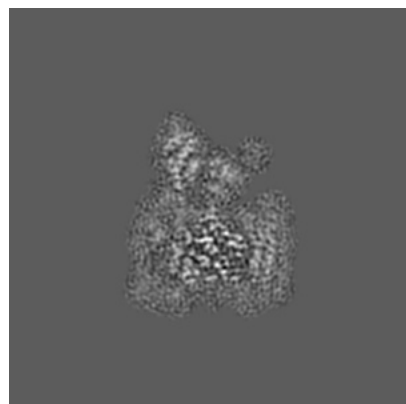


Z Index: 160

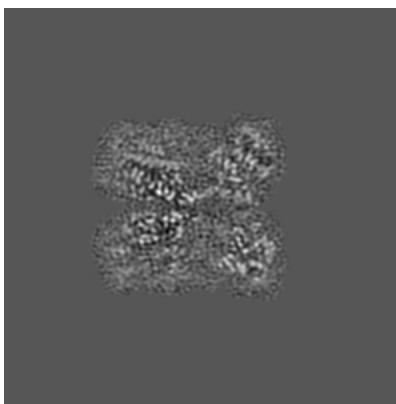
The images above show central slices of the map in three orthogonal directions.

6.3 Largest variance slices [i](#)

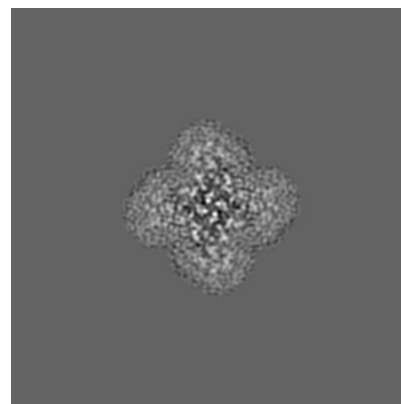
6.3.1 Primary map



X Index: 150



Y Index: 158

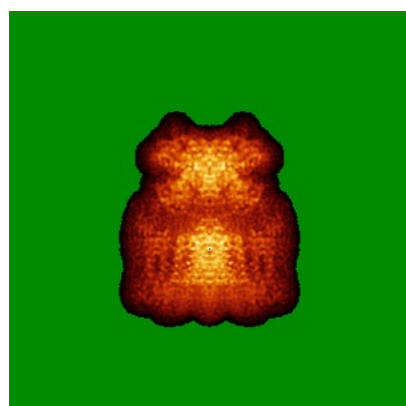


Z Index: 136

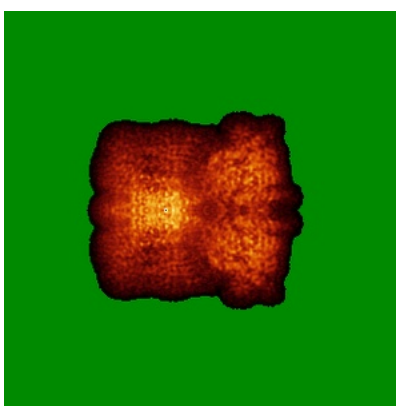
The images above show the largest variance slices of the map in three orthogonal directions.

6.4 Orthogonal standard-deviation projections (False-color) [i](#)

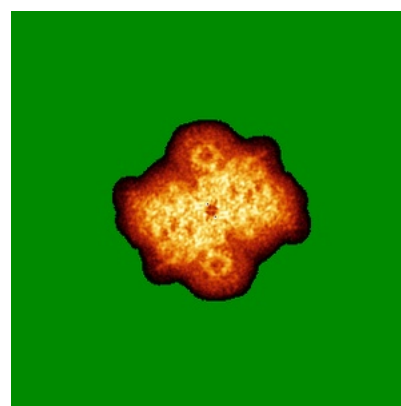
6.4.1 Primary map



X



Y

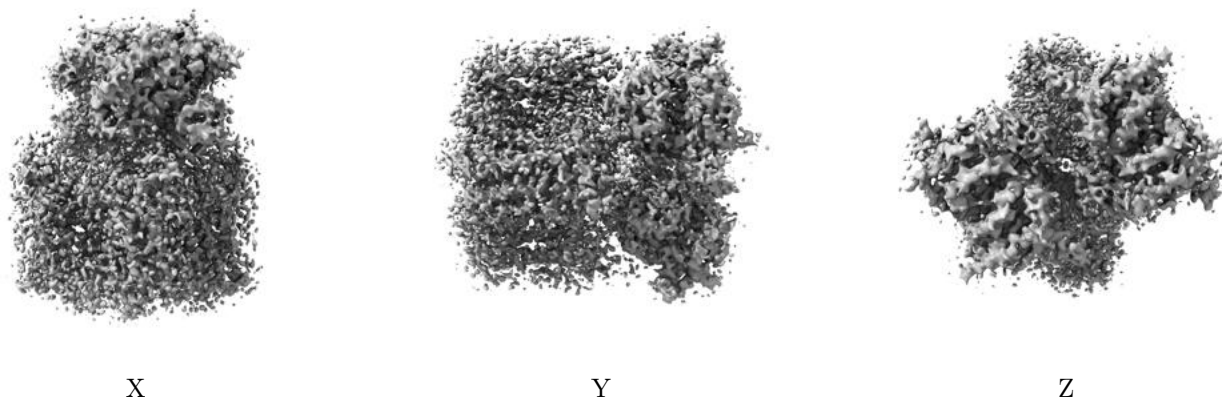


Z

The images above show the map standard deviation projections with false color in three orthogonal directions. Minimum values are shown in green, max in blue, and dark to light orange shades represent small to large values respectively.

6.5 Orthogonal surface views [i](#)

6.5.1 Primary map



The images above show the 3D surface view of the map at the recommended contour level 0.015. These images, in conjunction with the slice images, may facilitate assessment of whether an appropriate contour level has been provided.

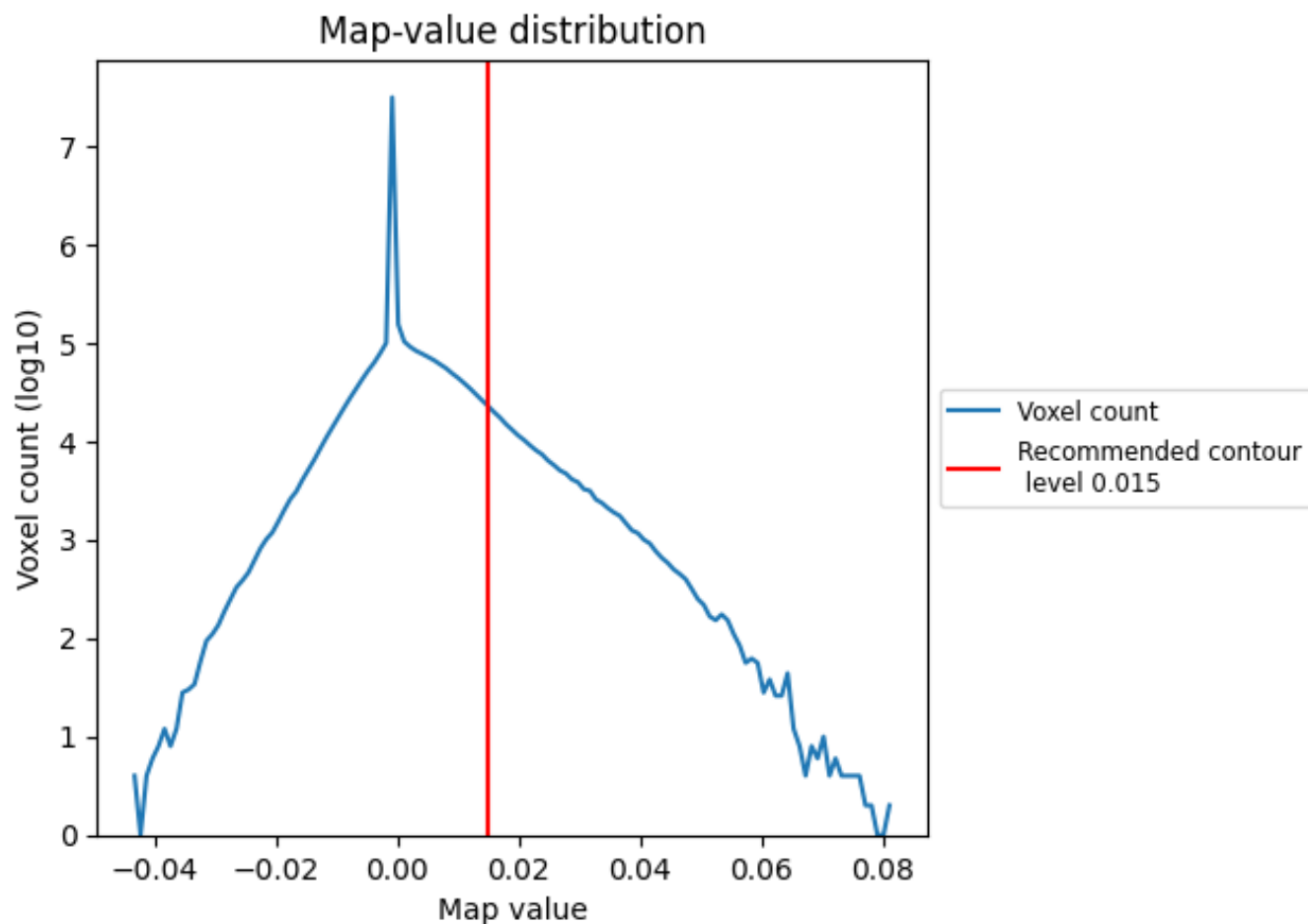
6.6 Mask visualisation [i](#)

This section was not generated. No masks/segmentation were deposited.

7 Map analysis [i](#)

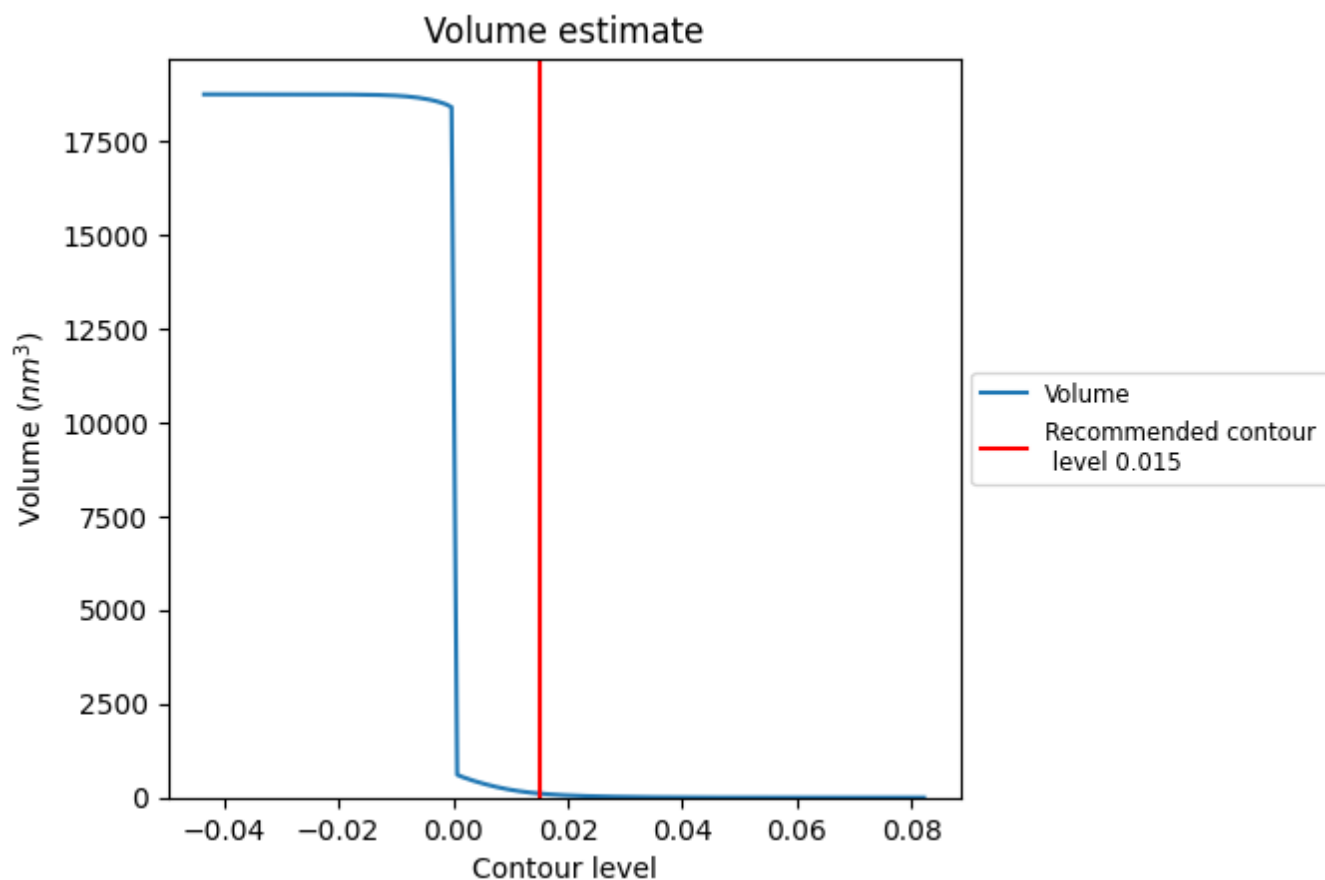
This section contains the results of statistical analysis of the map.

7.1 Map-value distribution [i](#)



The map-value distribution is plotted in 128 intervals along the x-axis. The y-axis is logarithmic. A spike in this graph at zero usually indicates that the volume has been masked.

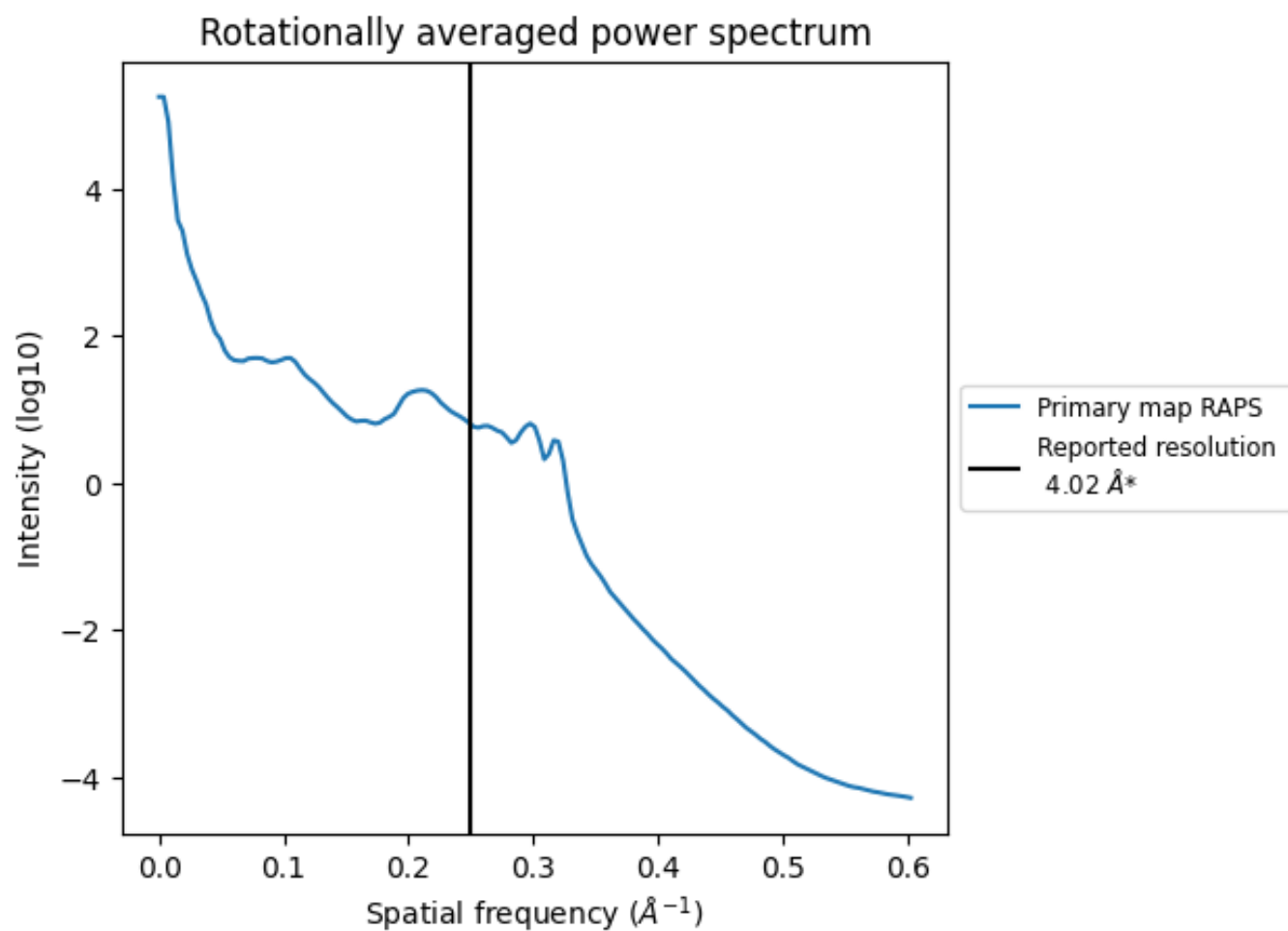
7.2 Volume estimate [i](#)



The volume at the recommended contour level is 109 nm^3 ; this corresponds to an approximate mass of 98 kDa.

The volume estimate graph shows how the enclosed volume varies with the contour level. The recommended contour level is shown as a vertical line and the intersection between the line and the curve gives the volume of the enclosed surface at the given level.

7.3 Rotationally averaged power spectrum ⓘ

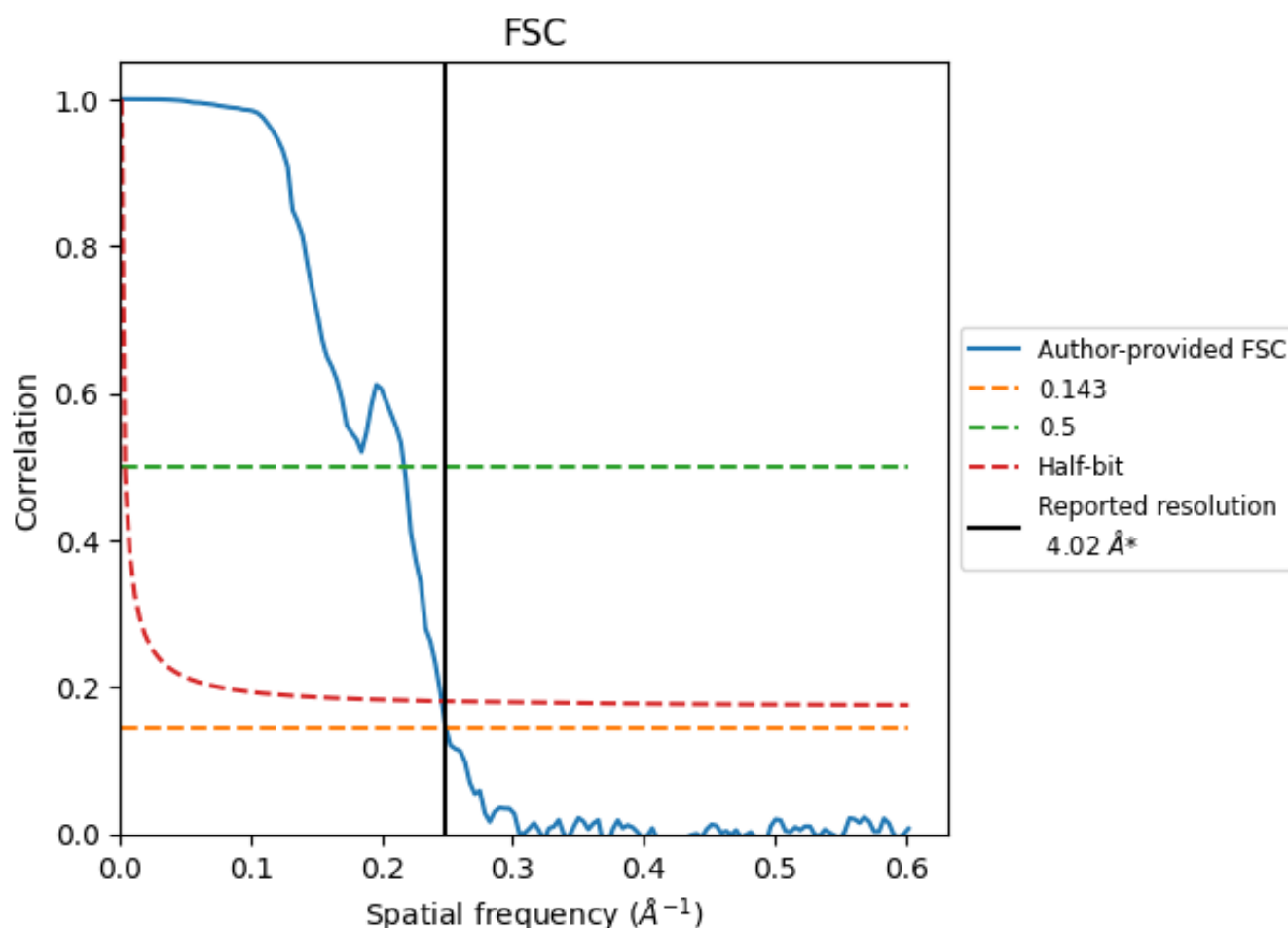


*Reported resolution corresponds to spatial frequency of 0.249 Å⁻¹

8 Fourier-Shell correlation [i](#)

Fourier-Shell Correlation (FSC) is the most commonly used method to estimate the resolution of single-particle and subtomogram-averaged maps. The shape of the curve depends on the imposed symmetry, mask and whether or not the two 3D reconstructions used were processed from a common reference. The reported resolution is shown as a black line. A curve is displayed for the half-bit criterion in addition to lines showing the 0.143 gold standard cut-off and 0.5 cut-off.

8.1 FSC [i](#)



*Reported resolution corresponds to spatial frequency of 0.249 Å⁻¹

8.2 Resolution estimates [i](#)

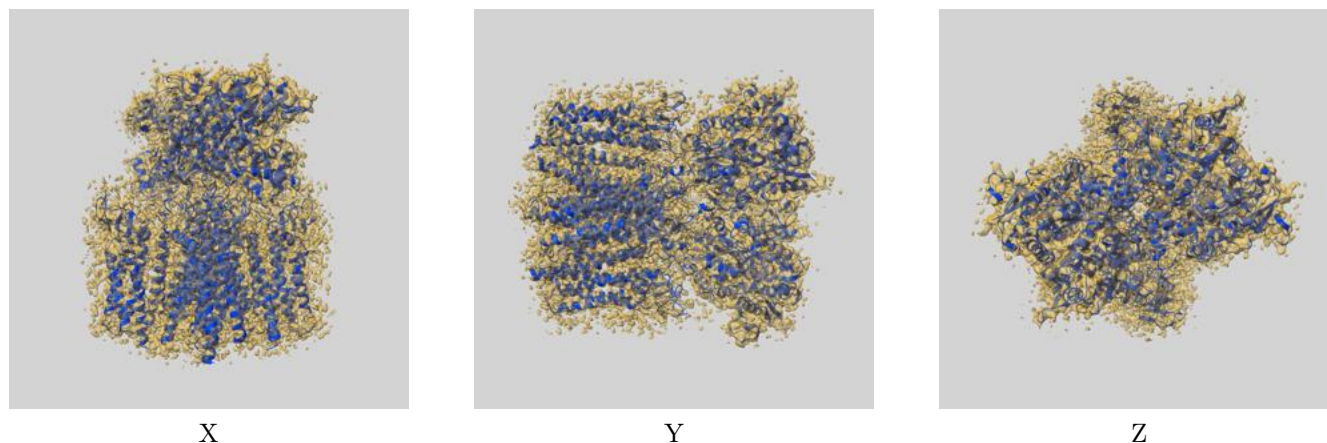
Resolution estimate (Å)	Estimation criterion (FSC cut-off)		
	0.143	0.5	Half-bit
Reported by author	4.02	-	-
Author-provided FSC curve	4.02	4.61	4.07
Unmasked-calculated*	-	-	-

*Resolution estimate based on FSC curve calculated by comparison of deposited half-maps.

9 Map-model fit [i](#)

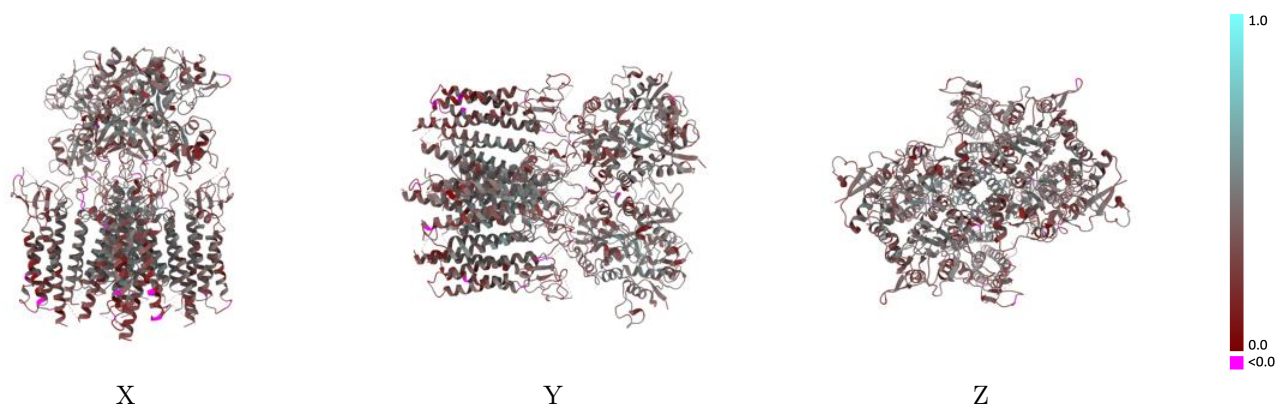
This section contains information regarding the fit between EMDB map EMD-26011 and PDB model 7TNJ. Per-residue inclusion information can be found in [section 3](#) on [page 10](#).

9.1 Map-model overlay [i](#)



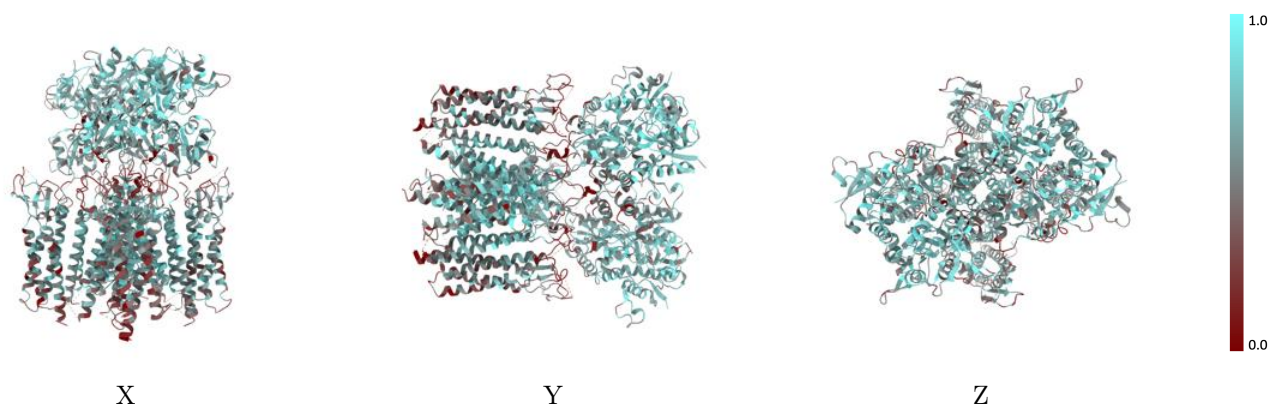
The images above show the 3D surface view of the map at the recommended contour level 0.015 at 50% transparency in yellow overlaid with a ribbon representation of the model coloured in blue. These images allow for the visual assessment of the quality of fit between the atomic model and the map.

9.2 Q-score mapped to coordinate model [i](#)



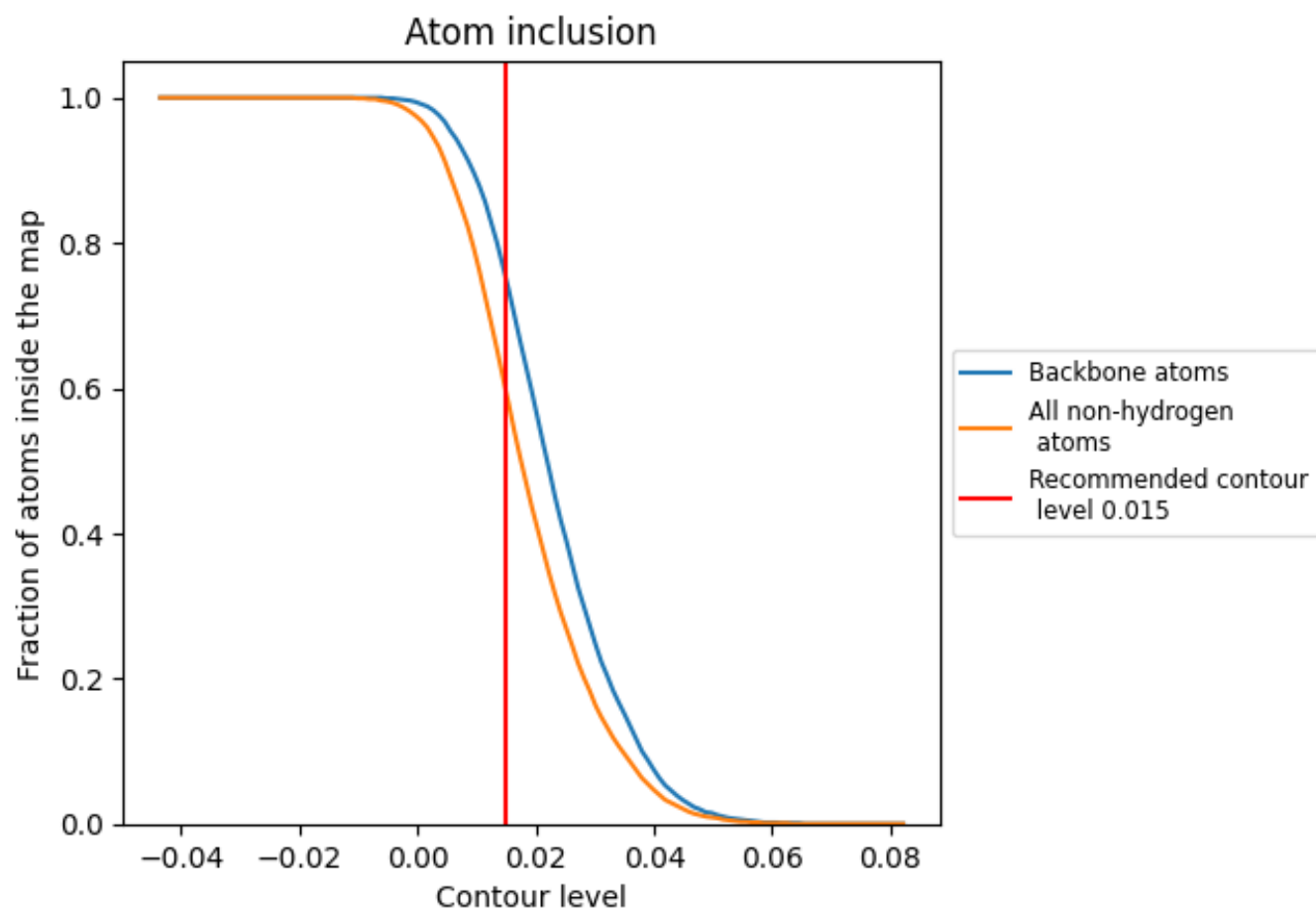
The images above show the model with each residue coloured according to its Q-score. This shows their resolvability in the map with higher Q-score values reflecting better resolvability. Please note: Q-score is calculating the resolvability of atoms, and thus high values are only expected at resolutions at which atoms can be resolved. Low Q-score values may therefore be expected for many entries.

9.3 Atom inclusion mapped to coordinate model [i](#)



The images above show the model with each residue coloured according to its atom inclusion. This shows to what extent they are inside the map at the recommended contour level (0.015).

9.4 Atom inclusion [i](#)



At the recommended contour level, 75% of all backbone atoms, 60% of all non-hydrogen atoms, are inside the map.

9.5 Map-model fit summary ⓘ

The table lists the average atom inclusion at the recommended contour level (0.015) and Q-score for the entire model and for each chain.

Chain	Atom inclusion	Q-score
All	<div></div> 0.5950	<div></div> 0.3690
A	<div></div> 0.6120	<div></div> 0.3840
B	<div></div> 0.5770	<div></div> 0.3530
C	<div></div> 0.6000	<div></div> 0.3650
D	<div></div> 0.5890	<div></div> 0.3740

