



wwPDB X-ray Structure Validation Summary Report ⓘ

Oct 12, 2024 – 09:43 AM EDT

PDB ID : 5TE4
Title : Crystal Structure of Broadly Neutralizing VRC01-class Antibody N6 in Complex with HIV-1 Clade G Strain X2088 gp120 Core
Authors : Zhou, T.; Kwong, P.D.
Deposited on : 2016-09-20
Resolution : 2.75 Å(reported)

This is a wwPDB X-ray Structure Validation Summary Report for a publicly released PDB entry.

We welcome your comments at validation@mail.wwpdb.org

A user guide is available at

<https://www.wwpdb.org/validation/2017/XrayValidationReportHelp>

with specific help available everywhere you see the ⓘ symbol.

The types of validation reports are described at

<http://www.wwpdb.org/validation/2017/FAQs#types>.

The following versions of software and data (see [references ⓘ](#)) were used in the production of this report:

MolProbity	:	4.02b-467
Mogul	:	2022.3.0, CSD as543be (2022)
Xtriage (Phenix)	:	1.20.1
EDS	:	3.0
Percentile statistics	:	20231227.v01 (using entries in the PDB archive December 27th 2023)
CCP4	:	9.0.003 (Gargrove)
Density-Fitness	:	1.0.11
Ideal geometry (proteins)	:	Engh & Huber (2001)
Ideal geometry (DNA, RNA)	:	Parkinson et al. (1996)
Validation Pipeline (wwPDB-VP)	:	2.39

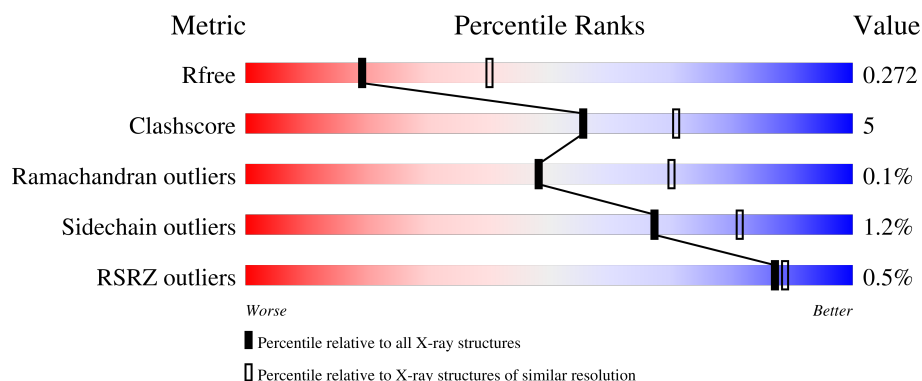
1 Overall quality at a glance

The following experimental techniques were used to determine the structure:

X-RAY DIFFRACTION

The reported resolution of this entry is 2.75 Å.

Percentile scores (ranging between 0-100) for global validation metrics of the entry are shown in the following graphic. The table shows the number of entries on which the scores are based.



Metric	Whole archive (#Entries)	Similar resolution (#Entries, resolution range(Å))
R_{free}	164625	1606 (2.78-2.74)
Clashscore	180529	1689 (2.78-2.74)
Ramachandran outliers	177936	1665 (2.78-2.74)
Sidechain outliers	177891	1665 (2.78-2.74)
RSRZ outliers	164620	1606 (2.78-2.74)

The table below summarises the geometric issues observed across the polymeric chains and their fit to the electron density. The red, orange, yellow and green segments of the lower bar indicate the fraction of residues that contain outliers for ≥ 3 , 2, 1 and 0 types of geometric quality criteria respectively. A grey segment represents the fraction of residues that are not modelled. The numeric value for each fraction is indicated below the corresponding segment, with a dot representing fractions $\leq 5\%$. The upper red bar (where present) indicates the fraction of residues that have poor fit to the electron density. The numeric value is given above the bar.

Mol	Chain	Length	Quality of chain
1	G	360	
2	H	225	
3	L	210	

2 Entry composition [i](#)

There are 8 unique types of molecules in this entry. The entry contains 6274 atoms, of which 0 are hydrogens and 0 are deuteriums.

In the tables below, the ZeroOcc column contains the number of atoms modelled with zero occupancy, the AltConf column contains the number of residues with at least one atom in alternate conformation and the Trace column contains the number of residues modelled with at most 2 atoms.

- Molecule 1 is a protein called HIV-1 clade G strain X2088 gp120.

Mol	Chain	Residues	Atoms					ZeroOcc	AltConf	Trace
1	G	341	Total	C	N	O	S	0	0	0
			2692	1691	467	513	21			

- Molecule 2 is a protein called Heavy chain of antibody N6.

Mol	Chain	Residues	Atoms					ZeroOcc	AltConf	Trace
2	H	224	Total	C	N	O	S	0	1	0
			1704	1081	297	320	6			

- Molecule 3 is a protein called Light chain of antibody N6.

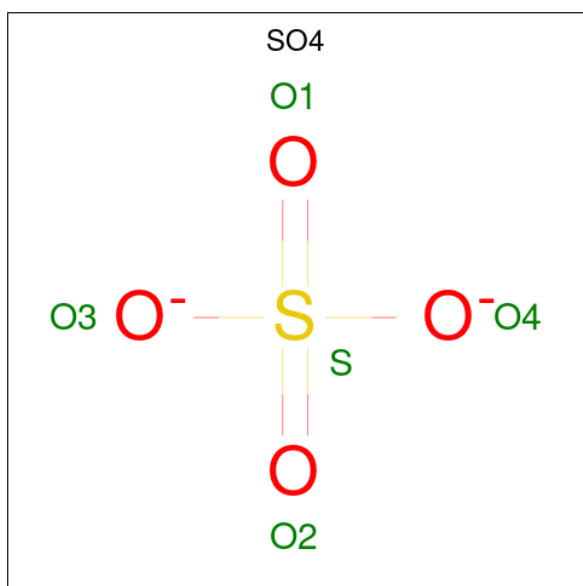
Mol	Chain	Residues	Atoms					ZeroOcc	AltConf	Trace
3	L	210	Total	C	N	O	S	0	0	0
			1631	1018	285	323	5			

- Molecule 4 is 2-acetamido-2-deoxy-beta-D-glucopyranose (three-letter code: NAG) (formula: $C_8H_{15}NO_6$).



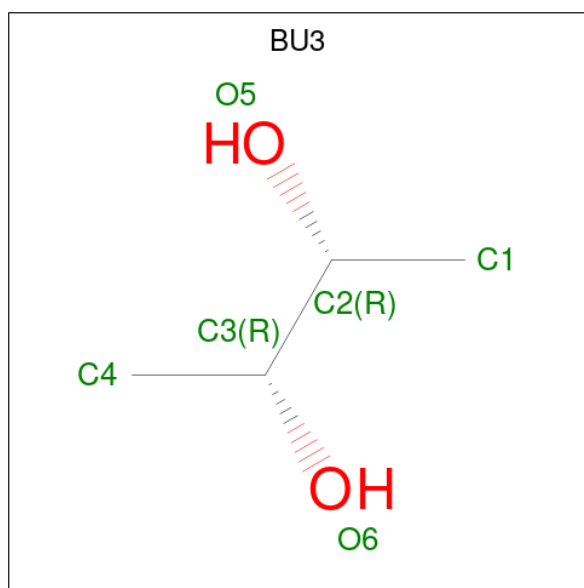
Mol	Chain	Residues	Atoms				ZeroOcc	AltConf
4	G	1	Total	C	N	O	0	0
			14	8	1	5		
4	G	1	Total	C	N	O	0	0
			14	8	1	5		
4	G	1	Total	C	N	O	0	0
			14	8	1	5		
4	G	1	Total	C	N	O	0	0
			14	8	1	5		
4	G	1	Total	C	N	O	0	0
			14	8	1	5		
4	G	1	Total	C	N	O	0	0
			14	8	1	5		
4	G	1	Total	C	N	O	0	0
			14	8	1	5		
4	G	1	Total	C	N	O	0	0
			14	8	1	5		
4	L	1	Total	C	N	O	0	0
			14	8	1	5		

- Molecule 5 is SULFATE ION (three-letter code: SO4) (formula: O₄S).



Mol	Chain	Residues	Atoms	ZeroOcc	AltConf
5	G	1	Total O S 5 4 1	0	0
5	G	1	Total O S 5 4 1	0	0
5	G	1	Total O S 5 4 1	0	0
5	H	1	Total O S 5 4 1	0	0
5	H	1	Total O S 5 4 1	0	0
5	H	1	Total O S 5 4 1	0	0
5	L	1	Total O S 5 4 1	0	0
5	L	1	Total O S 5 4 1	0	0

- Molecule 6 is (R,R)-2,3-BUTANEDIOL (three-letter code: BU3) (formula: C₄H₁₀O₂).



Mol	Chain	Residues	Atoms	ZeroOcc	AltConf
6	G	1	Total C O 6 4 2	0	0

- Molecule 7 is (4S)-2-METHYL-2,4-PENTANEDIOL (three-letter code: MPD) (formula: C₆H₁₄O₂).



Mol	Chain	Residues	Atoms			ZeroOcc	AltConf
7	H	1	Total	C	O	0	0
			8	6	2		

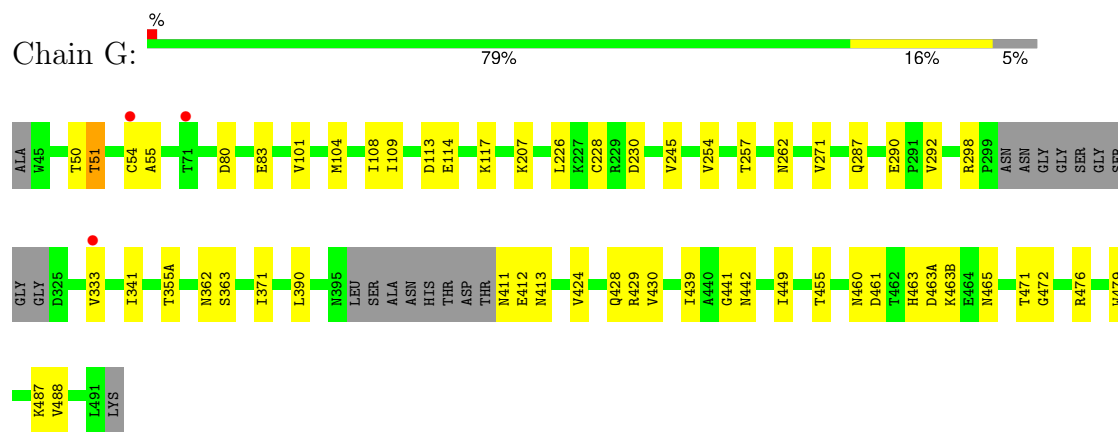
- Molecule 8 is water.

Mol	Chain	Residues	Atoms		ZeroOcc	AltConf
8	G	6	Total	O	0	0
			6	6		
8	H	12	Total	O	0	0
			12	12		
8	L	7	Total	O	0	0
			7	7		

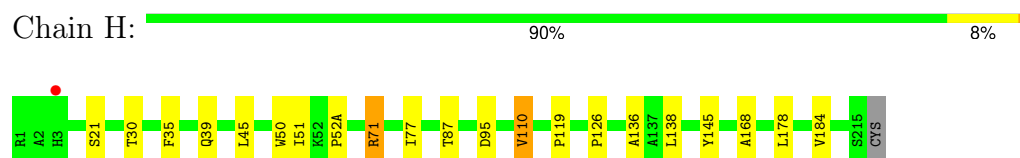
3 Residue-property plots

These plots are drawn for all protein, RNA, DNA and oligosaccharide chains in the entry. The first graphic for a chain summarises the proportions of the various outlier classes displayed in the second graphic. The second graphic shows the sequence view annotated by issues in geometry and electron density. Residues are color-coded according to the number of geometric quality criteria for which they contain at least one outlier: green = 0, yellow = 1, orange = 2 and red = 3 or more. A red dot above a residue indicates a poor fit to the electron density ($RSRZ > 2$). Stretches of 2 or more consecutive residues without any outlier are shown as a green connector. Residues present in the sample, but not in the model, are shown in grey.

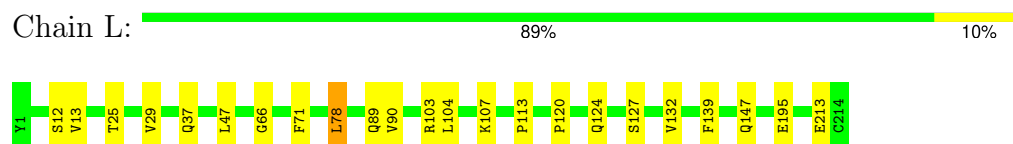
- Molecule 1: HIV-1 clade G strain X2088 gp120



- Molecule 2: Heavy chain of antibody N6



- Molecule 3: Light chain of antibody N6



4 Data and refinement statistics

Property	Value	Source
Space group	P 21 21 21	Depositor
Cell constants a, b, c, α , β , γ	64.76Å 72.23Å 218.12Å 90.00° 90.00° 90.00°	Depositor
Resolution (Å)	40.19 – 2.75 40.19 – 2.75	Depositor EDS
% Data completeness (in resolution range)	89.1 (40.19-2.75) 83.0 (40.19-2.75)	Depositor EDS
R_{merge}	0.10	Depositor
R_{sym}	(Not available)	Depositor
$\langle I/\sigma(I) \rangle$ ¹	0.47 (at 2.65Å)	Xtriage
Refinement program	PHENIX	Depositor
R, R_{free}	0.208 , 0.267 0.207 , 0.272	Depositor DCC
R_{free} test set	23498 reflections (4.99%)	wwPDB-VP
Wilson B-factor (Å ²)	68.1	Xtriage
Anisotropy	0.528	Xtriage
Bulk solvent k_{sol} (e/Å ³), B_{sol} (Å ²)	0.29 , 58.6	EDS
L-test for twinning ²	$\langle L \rangle = 0.47$, $\langle L^2 \rangle = 0.30$	Xtriage
Estimated twinning fraction	No twinning to report.	Xtriage
F_o, F_c correlation	0.95	EDS
Total number of atoms	6274	wwPDB-VP
Average B, all atoms (Å ²)	101.0	wwPDB-VP

Xtriage's analysis on translational NCS is as follows: *The largest off-origin peak in the Patterson function is 3.39% of the height of the origin peak. No significant pseudotranslation is detected.*

¹Intensities estimated from amplitudes.

²Theoretical values of $\langle |L| \rangle$, $\langle L^2 \rangle$ for acentric reflections are 0.5, 0.333 respectively for untwinned datasets, and 0.375, 0.2 for perfectly twinned datasets.

5 Model quality [i](#)

5.1 Standard geometry [i](#)

Bond lengths and bond angles in the following residue types are not validated in this section: NAG, SO4, MPD, BU3

The Z score for a bond length (or angle) is the number of standard deviations the observed value is removed from the expected value. A bond length (or angle) with $|Z| > 5$ is considered an outlier worth inspection. RMSZ is the root-mean-square of all Z scores of the bond lengths (or angles).

Mol	Chain	Bond lengths		Bond angles	
		RMSZ	# Z >5	RMSZ	# Z >5
1	G	0.26	0/2749	0.43	0/3737
2	H	0.25	0/1754	0.46	0/2390
3	L	0.24	0/1669	0.45	0/2264
All	All	0.25	0/6172	0.44	0/8391

There are no bond length outliers.

There are no bond angle outliers.

There are no chirality outliers.

There are no planarity outliers.

5.2 Too-close contacts [i](#)

In the following table, the Non-H and H(model) columns list the number of non-hydrogen atoms and hydrogen atoms in the chain respectively. The H(added) column lists the number of hydrogen atoms added and optimized by MolProbity. The Clashes column lists the number of clashes within the asymmetric unit, whereas Symm-Clashes lists symmetry-related clashes.

Mol	Chain	Non-H	H(model)	H(added)	Clashes	Symm-Clashes
1	G	2692	0	2613	31	0
2	H	1704	0	1673	12	0
3	L	1631	0	1572	14	0
4	G	154	0	143	1	0
4	L	14	0	13	0	0
5	G	15	0	0	0	0
5	H	15	0	0	0	0
5	L	10	0	0	1	0
6	G	6	0	10	1	0
7	H	8	0	14	0	0

Continued on next page...

Continued from previous page...

Mol	Chain	Non-H	H(model)	H(added)	Clashes	Symm-Clashes
8	G	6	0	0	1	0
8	H	12	0	0	0	0
8	L	7	0	0	2	0
All	All	6274	0	6038	57	0

The all-atom clashscore is defined as the number of clashes found per 1000 atoms (including hydrogen atoms). The all-atom clashscore for this structure is 5.

The worst 5 of 57 close contacts within the same asymmetric unit are listed below, sorted by their clash magnitude.

Atom-1	Atom-2	Interatomic distance (Å)	Clash overlap (Å)
1:G:113:ASP:OD1	1:G:429:ARG:NH2	2.25	0.69
2:H:126:PRO:HG3	2:H:138:LEU:HB3	1.75	0.69
1:G:455:THR:HG23	1:G:471:THR:HG21	1.77	0.67
1:G:298:ARG:NH2	1:G:441:GLY:O	2.25	0.64
3:L:13:VAL:HG11	3:L:78:LEU:HD13	1.79	0.64

There are no symmetry-related clashes.

5.3 Torsion angles [i](#)

5.3.1 Protein backbone [i](#)

In the following table, the Percentiles column shows the percent Ramachandran outliers of the chain as a percentile score with respect to all X-ray entries followed by that with respect to entries of similar resolution.

The Analysed column shows the number of residues for which the backbone conformation was analysed, and the total number of residues.

Mol	Chain	Analysed	Favoured	Allowed	Outliers	Percentiles	
1	G	335/360 (93%)	323 (96%)	12 (4%)	0	100	100
2	H	223/225 (99%)	213 (96%)	10 (4%)	0	100	100
3	L	208/210 (99%)	198 (95%)	9 (4%)	1 (0%)	25	41
All	All	766/795 (96%)	734 (96%)	31 (4%)	1 (0%)	48	70

All (1) Ramachandran outliers are listed below:

Mol	Chain	Res	Type
3	L	213	GLU

5.3.2 Protein sidechains [i](#)

In the following table, the Percentiles column shows the percent sidechain outliers of the chain as a percentile score with respect to all X-ray entries followed by that with respect to entries of similar resolution.

The Analysed column shows the number of residues for which the sidechain conformation was analysed, and the total number of residues.

Mol	Chain	Analysed	Rotameric	Outliers	Percentiles	
1	G	305/317 (96%)	300 (98%)	5 (2%)	58	75
2	H	185/185 (100%)	183 (99%)	2 (1%)	70	83
3	L	187/187 (100%)	186 (100%)	1 (0%)	86	92
All	All	677/689 (98%)	669 (99%)	8 (1%)	67	81

5 of 8 residues with a non-rotameric sidechain are listed below:

Mol	Chain	Res	Type
3	L	78	LEU
2	H	110	VAL
1	G	430	VAL
1	G	413	ASN
2	H	71	ARG

Sometimes sidechains can be flipped to improve hydrogen bonding and reduce clashes. There are no such sidechains identified.

5.3.3 RNA [i](#)

There are no RNA molecules in this entry.

5.4 Non-standard residues in protein, DNA, RNA chains [i](#)

There are no non-standard protein/DNA/RNA residues in this entry.

5.5 Carbohydrates [i](#)

There are no oligosaccharides in this entry.

5.6 Ligand geometry

22 ligands are modelled in this entry.

In the following table, the Counts columns list the number of bonds (or angles) for which Mogul statistics could be retrieved, the number of bonds (or angles) that are observed in the model and the number of bonds (or angles) that are defined in the Chemical Component Dictionary. The Link column lists molecule types, if any, to which the group is linked. The Z score for a bond length (or angle) is the number of standard deviations the observed value is removed from the expected value. A bond length (or angle) with $|Z| > 2$ is considered an outlier worth inspection. RMSZ is the root-mean-square of all Z scores of the bond lengths (or angles).

Mol	Type	Chain	Res	Link	Bond lengths			Bond angles		
					Counts	RMSZ	$\# Z > 2$	Counts	RMSZ	$\# Z > 2$
5	SO4	L	302	-	4,4,4	0.23	0	6,6,6	0.07	0
4	NAG	G	507	1	14,14,15	0.23	0	17,19,21	0.46	0
5	SO4	H	304	-	4,4,4	0.23	0	6,6,6	0.07	0
6	BU3	G	515	-	4,5,5	0.76	0	6,6,6	0.42	0
4	NAG	G	509	1	14,14,15	0.18	0	17,19,21	0.50	0
4	NAG	G	510	1	14,14,15	0.51	0	17,19,21	0.58	0
4	NAG	G	511	1	14,14,15	0.24	0	17,19,21	0.41	0
4	NAG	G	502	1	14,14,15	0.24	0	17,19,21	0.43	0
7	MPD	H	303	-	7,7,7	0.31	0	9,10,10	0.20	0
5	SO4	G	513	-	4,4,4	0.23	0	6,6,6	0.06	0
5	SO4	H	301	-	4,4,4	0.24	0	6,6,6	0.06	0
4	NAG	L	301	3	14,14,15	0.23	0	17,19,21	0.37	0
5	SO4	G	514	-	4,4,4	0.24	0	6,6,6	0.08	0
5	SO4	H	302	-	4,4,4	0.23	0	6,6,6	0.08	0
4	NAG	G	504	1	14,14,15	0.25	0	17,19,21	0.43	0
4	NAG	G	505	1	14,14,15	0.28	0	17,19,21	0.41	0
4	NAG	G	508	1	14,14,15	0.28	0	17,19,21	0.47	0
4	NAG	G	503	1	14,14,15	0.31	0	17,19,21	0.52	0
5	SO4	L	303	-	4,4,4	0.24	0	6,6,6	0.06	0
4	NAG	G	501	1	14,14,15	0.27	0	17,19,21	0.38	0
4	NAG	G	506	1	14,14,15	0.31	0	17,19,21	0.46	0
5	SO4	G	512	-	4,4,4	0.23	0	6,6,6	0.07	0

In the following table, the Chirals column lists the number of chiral outliers, the number of chiral centers analysed, the number of these observed in the model and the number defined in the Chemical Component Dictionary. Similar counts are reported in the Torsion and Rings columns. '-' means no outliers of that kind were identified.

Mol	Type	Chain	Res	Link	Chirals	Torsions	Rings
4	NAG	G	505	1	-	2/6/23/26	0/1/1/1
4	NAG	G	501	1	-	0/6/23/26	0/1/1/1

Continued on next page...

Continued from previous page...

Mol	Type	Chain	Res	Link	Chirals	Torsions	Rings
4	NAG	G	507	1	-	2/6/23/26	0/1/1/1
6	BU3	G	515	-	-	4/4/4/4	-
4	NAG	G	506	1	-	2/6/23/26	0/1/1/1
4	NAG	G	511	1	-	2/6/23/26	0/1/1/1
4	NAG	G	502	1	-	2/6/23/26	0/1/1/1
7	MPD	H	303	-	-	0/5/5/5	-
4	NAG	G	508	1	-	1/6/23/26	0/1/1/1
4	NAG	G	509	1	-	4/6/23/26	0/1/1/1
4	NAG	L	301	3	-	2/6/23/26	0/1/1/1
4	NAG	G	510	1	-	3/6/23/26	0/1/1/1
4	NAG	G	503	1	-	2/6/23/26	0/1/1/1
4	NAG	G	504	1	-	0/6/23/26	0/1/1/1

There are no bond length outliers.

There are no bond angle outliers.

There are no chirality outliers.

5 of 26 torsion outliers are listed below:

Mol	Chain	Res	Type	Atoms
6	G	515	BU3	C1-C2-C3-O6
6	G	515	BU3	O5-C2-C3-C4
6	G	515	BU3	C1-C2-C3-C4
4	G	509	NAG	O5-C5-C6-O6
4	G	502	NAG	O5-C5-C6-O6

There are no ring outliers.

3 monomers are involved in 3 short contacts:

Mol	Chain	Res	Type	Clashes	Symm-Clashes
5	L	302	SO4	1	0
6	G	515	BU3	1	0
4	G	510	NAG	1	0

5.7 Other polymers ⓘ

There are no such residues in this entry.

5.8 Polymer linkage issues ⓘ

There are no chain breaks in this entry.

6 Fit of model and data [i](#)

6.1 Protein, DNA and RNA chains [i](#)

In the following table, the column labelled ‘#RSRZ> 2’ contains the number (and percentage) of RSRZ outliers, followed by percent RSRZ outliers for the chain as percentile scores relative to all X-ray entries and entries of similar resolution. The OWAB column contains the minimum, median, 95th percentile and maximum values of the occupancy-weighted average B-factor per residue. The column labelled ‘Q< 0.9’ lists the number of (and percentage) of residues with an average occupancy less than 0.9.

Mol	Chain	Analysed	<RSRZ>	#RSRZ>2	OWAB(Å ²)	Q<0.9
1	G	341/360 (94%)	-0.12	3 (0%) 81 83	64, 102, 163, 203	0
2	H	224/225 (99%)	-0.39	1 (0%) 89 90	55, 82, 122, 155	1 (0%)
3	L	210/210 (100%)	-0.31	0 100 100	59, 97, 143, 172	0
All	All	775/795 (97%)	-0.25	4 (0%) 87 89	55, 95, 150, 203	1 (0%)

All (4) RSRZ outliers are listed below:

Mol	Chain	Res	Type	RSRZ
1	G	333	VAL	3.1
1	G	71	THR	3.0
1	G	54	CYS	3.0
2	H	3[A]	HIS	2.2

6.2 Non-standard residues in protein, DNA, RNA chains [i](#)

There are no non-standard protein/DNA/RNA residues in this entry.

6.3 Carbohydrates [i](#)

There are no monosaccharides in this entry.

6.4 Ligands [i](#)

In the following table, the Atoms column lists the number of modelled atoms in the group and the number defined in the chemical component dictionary. The B-factors column lists the minimum, median, 95th percentile and maximum values of B factors of atoms in the group. The column labelled ‘Q< 0.9’ lists the number of atoms with occupancy less than 0.9.

Mol	Type	Chain	Res	Atoms	RSCC	RSR	B-factors(\AA^2)	Q<0.9
4	NAG	G	502	14/15	0.36	0.10	115,135,144,144	0
5	SO4	G	513	5/5	0.44	0.09	183,185,187,188	0
4	NAG	G	506	14/15	0.53	0.10	134,143,150,152	0
4	NAG	L	301	14/15	0.57	0.12	126,138,151,159	0
4	NAG	G	510	14/15	0.60	0.11	124,137,149,154	0
4	NAG	G	511	14/15	0.64	0.10	115,129,140,141	0
4	NAG	G	507	14/15	0.65	0.08	115,131,138,141	0
5	SO4	H	302	5/5	0.70	0.06	177,179,182,185	0
5	SO4	L	303	5/5	0.71	0.07	162,167,168,169	0
5	SO4	H	304	5/5	0.74	0.08	166,168,170,176	0
4	NAG	G	509	14/15	0.76	0.12	112,120,132,139	0
7	MPD	H	303	8/8	0.77	0.15	81,97,110,114	0
4	NAG	G	501	14/15	0.79	0.10	117,125,133,138	0
5	SO4	G	514	5/5	0.80	0.05	168,171,172,175	0
4	NAG	G	505	14/15	0.83	0.09	106,122,133,134	0
5	SO4	L	302	5/5	0.83	0.08	130,130,135,136	0
4	NAG	G	504	14/15	0.85	0.09	77,97,111,113	0
5	SO4	H	301	5/5	0.86	0.06	127,129,136,139	0
4	NAG	G	508	14/15	0.88	0.09	81,107,117,121	0
4	NAG	G	503	14/15	0.93	0.08	76,87,100,104	0
6	BU3	G	515	6/6	0.94	0.19	99,105,106,116	0
5	SO4	G	512	5/5	0.98	0.05	79,81,86,87	0

6.5 Other polymers

There are no such residues in this entry.