



Full wwPDB X-ray Structure Validation Report ⓘ

Apr 21, 2025 – 12:04 AM EDT

PDB ID : 7TD9 / pdb_00007td9
Title : G-059 bound to the SMARCA4 (BRG1) Bromodomain
Authors : Tang, Y.; Poy, F.; Taylor, A.M.; Cochran, A.G.; Bellon, S.F.
Deposited on : 2021-12-30
Resolution : 1.61 Å(reported)

This is a Full wwPDB X-ray Structure Validation Report for a publicly released PDB entry.

We welcome your comments at validation@mail.wwpdb.org

A user guide is available at

<https://www.wwpdb.org/validation/2017/XrayValidationReportHelp>

with specific help available everywhere you see the ⓘ symbol.

The types of validation reports are described at

<http://www.wwpdb.org/validation/2017/FAQs#types>.

The following versions of software and data (see [references ⓘ](#)) were used in the production of this report:

MolProbity	:	4.02b-467
Mogul	:	2022.3.0, CSD as543be (2022)
Xtriage (Phenix)	:	2.0rc1
EDS	:	3.0
buster-report	:	1.1.7 (2018)
Percentile statistics	:	20231227.v01 (using entries in the PDB archive December 27th 2023)
CCP4	:	9.0.006 (Gargrove)
Density-Fitness	:	1.0.12
Ideal geometry (proteins)	:	Engh & Huber (2001)
Ideal geometry (DNA, RNA)	:	Parkinson et al. (1996)
Validation Pipeline (wwPDB-VP)	:	2.42

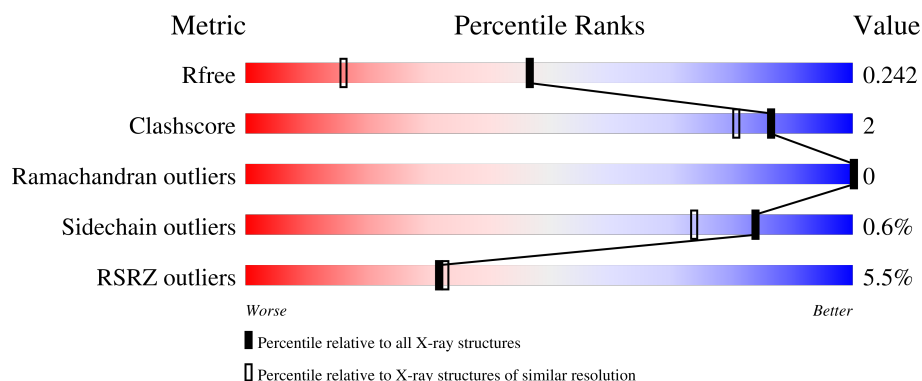
1 Overall quality at a glance

The following experimental techniques were used to determine the structure:

X-RAY DIFFRACTION

The reported resolution of this entry is 1.61 Å.

Percentile scores (ranging between 0-100) for global validation metrics of the entry are shown in the following graphic. The table shows the number of entries on which the scores are based.



Metric	Whole archive (#Entries)	Similar resolution (#Entries, resolution range(Å))
R_{free}	164625	6077 (1.64-1.60)
Clashscore	180529	6617 (1.64-1.60)
Ramachandran outliers	177936	6498 (1.64-1.60)
Sidechain outliers	177891	6497 (1.64-1.60)
RSRZ outliers	164620	6075 (1.64-1.60)

The table below summarises the geometric issues observed across the polymeric chains and their fit to the electron density. The red, orange, yellow and green segments of the lower bar indicate the fraction of residues that contain outliers for ≥ 3 , 2, 1 and 0 types of geometric quality criteria respectively. A grey segment represents the fraction of residues that are not modelled. The numeric value for each fraction is indicated below the corresponding segment, with a dot representing fractions $\leq 5\%$. The upper red bar (where present) indicates the fraction of residues that have poor fit to the electron density. The numeric value is given above the bar.

Mol	Chain	Length	Quality of chain
1	AAA	130	<div> <div>3%</div> <div>84%</div> <div>5%</div> <div>11%</div> </div>
1	BBB	130	<div> <div>5%</div> <div>84%</div> <div>•</div> <div>12%</div> </div>
1	CCC	130	<div> <div>7%</div> <div>87%</div> <div>•</div> <div>10%</div> </div>

2 Entry composition

There are 3 unique types of molecules in this entry. The entry contains 3163 atoms, of which 0 are hydrogens and 0 are deuteriums.

In the tables below, the ZeroOcc column contains the number of atoms modelled with zero occupancy, the AltConf column contains the number of residues with at least one atom in alternate conformation and the Trace column contains the number of residues modelled with at most 2 atoms.

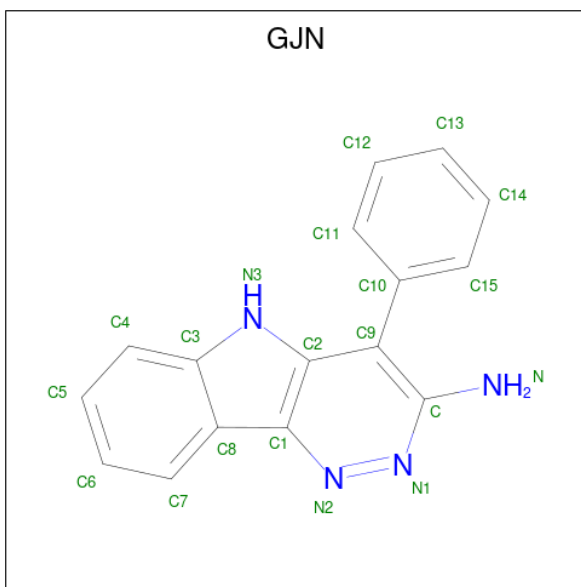
- Molecule 1 is a protein called Isoform 4 of Transcription activator BRG1.

Mol	Chain	Residues	Atoms					ZeroOcc	AltConf	Trace
1	AAA	116	Total	C	N	O	S	0	1	0
			964	615	167	179	3			
1	BBB	114	Total	C	N	O	S	0	1	0
			947	603	164	177	3			
1	CCC	117	Total	C	N	O	S	0	0	0
			963	615	167	178	3			

There are 6 discrepancies between the modelled and reference sequences:

Chain	Residue	Modelled	Actual	Comment	Reference
AAA	1446	GLY	-	expression tag	UNP P51532-4
AAA	1447	SER	-	expression tag	UNP P51532-4
BBB	1446	GLY	-	expression tag	UNP P51532-4
BBB	1447	SER	-	expression tag	UNP P51532-4
CCC	1446	GLY	-	expression tag	UNP P51532-4
CCC	1447	SER	-	expression tag	UNP P51532-4

- Molecule 2 is 4-phenyl-5H-pyridazino[4,3-b]indol-3-amine (CCD ID: GJN) (formula: C₁₆H₁₂N₄) (labeled as "Ligand of Interest" by depositor).



Mol	Chain	Residues	Atoms			ZeroOcc	AltConf
2	AAA	1	Total	C	N	0	0
			20	16	4		
2	BBB	1	Total	C	N	0	0
			20	16	4		
2	CCC	1	Total	C	N	0	0
			20	16	4		

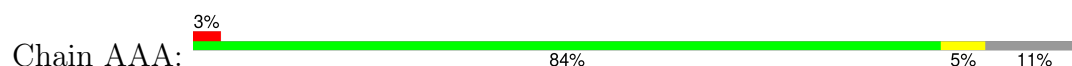
- Molecule 3 is water.

Mol	Chain	Residues	Atoms		ZeroOcc	AltConf
3	AAA	104	Total	O	0	0
			104	104		
3	BBB	59	Total	O	0	0
			59	59		
3	CCC	66	Total	O	0	0
			66	66		

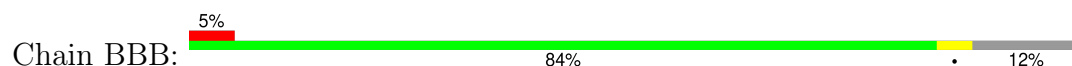
3 Residue-property plots [i](#)

These plots are drawn for all protein, RNA, DNA and oligosaccharide chains in the entry. The first graphic for a chain summarises the proportions of the various outlier classes displayed in the second graphic. The second graphic shows the sequence view annotated by issues in geometry and electron density. Residues are color-coded according to the number of geometric quality criteria for which they contain at least one outlier: green = 0, yellow = 1, orange = 2 and red = 3 or more. A red dot above a residue indicates a poor fit to the electron density ($RSRZ > 2$). Stretches of 2 or more consecutive residues without any outlier are shown as a green connector. Residues present in the sample, but not in the model, are shown in grey.

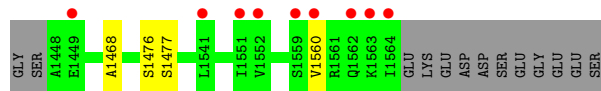
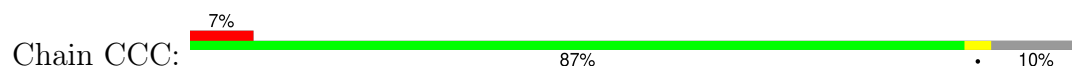
- Molecule 1: Isoform 4 of Transcription activator BRG1



- Molecule 1: Isoform 4 of Transcription activator BRG1



- Molecule 1: Isoform 4 of Transcription activator BRG1



4 Data and refinement statistics

Property	Value	Source
Space group	P 65	Depositor
Cell constants a, b, c, α , β , γ	90.26Å 90.26Å 96.79Å 90.00° 90.00° 120.00°	Depositor
Resolution (Å)	41.15 – 1.61 41.15 – 1.61	Depositor EDS
% Data completeness (in resolution range)	99.9 (41.15-1.61) 99.9 (41.15-1.61)	Depositor EDS
R_{merge}	0.07	Depositor
R_{sym}	(Not available)	Depositor
$\langle I/\sigma(I) \rangle$ ¹	6.03 (at 1.61Å)	Xtriage
Refinement program	REFMAC 5.8.0267	Depositor
R, R_{free}	0.206 , 0.242 0.206 , 0.242	Depositor DCC
R_{free} test set	3003 reflections (5.08%)	wwPDB-VP
Wilson B-factor (Å ²)	24.4	Xtriage
Anisotropy	0.000	Xtriage
Bulk solvent k_{sol} (e/Å ³), B_{sol} (Å ²)	0.34 , 29.1	EDS
L-test for twinning ²	$\langle L \rangle = 0.49$, $\langle L^2 \rangle = 0.32$	Xtriage
Estimated twinning fraction	0.033 for h,-h-k,-l	Xtriage
F_o, F_c correlation	0.96	EDS
Total number of atoms	3163	wwPDB-VP
Average B, all atoms (Å ²)	29.0	wwPDB-VP

Xtriage's analysis on translational NCS is as follows: *The largest off-origin peak in the Patterson function is 3.77% of the height of the origin peak. No significant pseudotranslation is detected.*

¹Intensities estimated from amplitudes.

²Theoretical values of $\langle |L| \rangle$, $\langle L^2 \rangle$ for acentric reflections are 0.5, 0.333 respectively for untwinned datasets, and 0.375, 0.2 for perfectly twinned datasets.

5 Model quality

5.1 Standard geometry

Bond lengths and bond angles in the following residue types are not validated in this section: GJN

The Z score for a bond length (or angle) is the number of standard deviations the observed value is removed from the expected value. A bond length (or angle) with $|Z| > 5$ is considered an outlier worth inspection. RMSZ is the root-mean-square of all Z scores of the bond lengths (or angles).

Mol	Chain	Bond lengths		Bond angles	
		RMSZ	$\# Z > 5$	RMSZ	$\# Z > 5$
1	AAA	0.61	0/979	0.93	3/1313 (0.2%)
1	BBB	0.56	0/962	0.91	1/1291 (0.1%)
1	CCC	0.45	0/978	0.72	0/1312
All	All	0.54	0/2919	0.86	4/3916 (0.1%)

There are no bond length outliers.

All (4) bond angle outliers are listed below:

Mol	Chain	Res	Type	Atoms	Z	Observed(°)	Ideal(°)
1	BBB	1561	ARG	NE-CZ-NH2	-7.61	116.50	120.30
1	AAA	1460	LYS	N-CA-CB	-5.27	101.11	110.60
1	AAA	1515	ARG	NE-CZ-NH2	-5.11	117.74	120.30
1	AAA	1460	LYS	CB-CA-C	5.06	120.51	110.40

There are no chirality outliers.

There are no planarity outliers.

5.2 Too-close contacts

In the following table, the Non-H and H(model) columns list the number of non-hydrogen atoms and hydrogen atoms in the chain respectively. The H(added) column lists the number of hydrogen atoms added and optimized by MolProbity. The Clashes column lists the number of clashes within the asymmetric unit, whereas Symm-Clashes lists symmetry-related clashes.

Mol	Chain	Non-H	H(model)	H(added)	Clashes	Symm-Clashes
1	AAA	964	0	1010	7	0
1	BBB	947	0	986	4	0
1	CCC	963	0	1011	4	0
2	AAA	20	0	0	0	0

Continued on next page...

Continued from previous page...

Mol	Chain	Non-H	H(model)	H(added)	Clashes	Symm-Clashes
2	BBB	20	0	0	0	0
2	CCC	20	0	0	0	0
3	AAA	104	0	0	3	0
3	BBB	59	0	0	2	0
3	CCC	66	0	0	0	0
All	All	3163	0	3007	12	0

The all-atom clashscore is defined as the number of clashes found per 1000 atoms (including hydrogen atoms). The all-atom clashscore for this structure is 2.

All (12) close contacts within the same asymmetric unit are listed below, sorted by their clash magnitude.

Atom-1	Atom-2	Interatomic distance (Å)	Clash overlap (Å)
1:AAA:1562:GLN:HE22	1:CCC:1477:SER:HB3	1.52	0.73
1:BBB:1484:VAL:HG12	3:BBB:1711:HOH:O	2.03	0.58
1:AAA:1471:LYS:HE2	3:AAA:1794:HOH:O	2.04	0.56
1:BBB:1470:ILE:CD1	1:BBB:1511:LYS:HE3	2.36	0.55
1:BBB:1470:ILE:HD12	1:BBB:1511:LYS:HE3	1.90	0.53
1:AAA:1562:GLN:NE2	1:CCC:1477:SER:HB3	2.22	0.52
1:AAA:1527:LYS:HD3	3:BBB:1719:HOH:O	2.10	0.52
1:AAA:1534:GLN:HG3	3:AAA:1788:HOH:O	2.12	0.50
1:CCC:1468:ALA:HB3	1:CCC:1560:VAL:HG11	2.00	0.43
1:BBB:1471:LYS:HD3	1:BBB:1471:LYS:HA	1.70	0.43
1:AAA:1471:LYS:CE	3:AAA:1794:HOH:O	2.66	0.43
1:AAA:1562:GLN:HE22	1:CCC:1477:SER:CB	2.27	0.42

There are no symmetry-related clashes.

5.3 Torsion angles ⓘ

5.3.1 Protein backbone ⓘ

In the following table, the Percentiles column shows the percent Ramachandran outliers of the chain as a percentile score with respect to all X-ray entries followed by that with respect to entries of similar resolution.

The Analysed column shows the number of residues for which the backbone conformation was analysed, and the total number of residues.

Mol	Chain	Analysed	Favoured	Allowed	Outliers	Percentiles	
1	AAA	115/130 (88%)	114 (99%)	1 (1%)	0	100	100
1	BBB	113/130 (87%)	113 (100%)	0	0	100	100
1	CCC	115/130 (88%)	115 (100%)	0	0	100	100
All	All	343/390 (88%)	342 (100%)	1 (0%)	0	100	100

There are no Ramachandran outliers to report.

5.3.2 Protein sidechains ⓘ

In the following table, the Percentiles column shows the percent sidechain outliers of the chain as a percentile score with respect to all X-ray entries followed by that with respect to entries of similar resolution.

The Analysed column shows the number of residues for which the sidechain conformation was analysed, and the total number of residues.

Mol	Chain	Analysed	Rotameric	Outliers	Percentiles	
1	AAA	113/123 (92%)	112 (99%)	1 (1%)	75	61
1	BBB	111/123 (90%)	111 (100%)	0	100	100
1	CCC	112/123 (91%)	111 (99%)	1 (1%)	75	61
All	All	336/369 (91%)	334 (99%)	2 (1%)	84	74

All (2) residues with a non-rotameric sidechain are listed below:

Mol	Chain	Res	Type
1	AAA	1528	ASP
1	CCC	1476	SER

Sometimes sidechains can be flipped to improve hydrogen bonding and reduce clashes. There are no such sidechains identified.

5.3.3 RNA ⓘ

There are no RNA molecules in this entry.

5.4 Non-standard residues in protein, DNA, RNA chains ⓘ

There are no non-standard protein/DNA/RNA residues in this entry.

5.5 Carbohydrates [i](#)

There are no oligosaccharides in this entry.

5.6 Ligand geometry [i](#)

3 ligands are modelled in this entry.

In the following table, the Counts columns list the number of bonds (or angles) for which Mogul statistics could be retrieved, the number of bonds (or angles) that are observed in the model and the number of bonds (or angles) that are defined in the Chemical Component Dictionary. The Link column lists molecule types, if any, to which the group is linked. The Z score for a bond length (or angle) is the number of standard deviations the observed value is removed from the expected value. A bond length (or angle) with $|Z| > 2$ is considered an outlier worth inspection. RMSZ is the root-mean-square of all Z scores of the bond lengths (or angles).

Mol	Type	Chain	Res	Link	Bond lengths			Bond angles		
					Counts	RMSZ	# $ Z > 2$	Counts	RMSZ	# $ Z > 2$
2	GJN	BBB	1601	-	23,23,23	2.22	5 (21%)	21,33,33	3.15	8 (38%)
2	GJN	AAA	1601	-	23,23,23	1.53	5 (21%)	21,33,33	3.35	10 (47%)
2	GJN	CCC	1601	-	23,23,23	1.40	4 (17%)	21,33,33	1.75	4 (19%)

In the following table, the Chirals column lists the number of chiral outliers, the number of chiral centers analysed, the number of these observed in the model and the number defined in the Chemical Component Dictionary. Similar counts are reported in the Torsion and Rings columns. '-' means no outliers of that kind were identified.

Mol	Type	Chain	Res	Link	Chirals	Torsions	Rings
2	GJN	BBB	1601	-	-	0/4/4/4	0/4/4/4
2	GJN	AAA	1601	-	-	0/4/4/4	0/4/4/4
2	GJN	CCC	1601	-	-	0/4/4/4	0/4/4/4

All (14) bond length outliers are listed below:

Mol	Chain	Res	Type	Atoms	Z	Observed(Å)	Ideal(Å)
2	BBB	1601	GJN	N2-N1	7.68	1.42	1.31
2	CCC	1601	GJN	C9-C	3.26	1.48	1.41
2	BBB	1601	GJN	C9-C	2.83	1.47	1.41
2	BBB	1601	GJN	C9-C2	2.81	1.47	1.43
2	BBB	1601	GJN	C8-C3	2.63	1.49	1.42
2	AAA	1601	GJN	C6-C7	2.57	1.42	1.36
2	BBB	1601	GJN	C6-C7	2.56	1.42	1.36
2	AAA	1601	GJN	C-N	2.42	1.40	1.34
2	CCC	1601	GJN	N2-N1	2.37	1.35	1.31

Continued on next page...

Continued from previous page...

Mol	Chain	Res	Type	Atoms	Z	Observed(Å)	Ideal(Å)
2	AAA	1601	GJN	C12-C11	2.32	1.42	1.38
2	AAA	1601	GJN	C8-C3	2.27	1.48	1.42
2	CCC	1601	GJN	C8-C3	2.19	1.48	1.42
2	AAA	1601	GJN	C1-C2	2.09	1.50	1.43
2	CCC	1601	GJN	C14-C13	2.07	1.42	1.38

All (22) bond angle outliers are listed below:

Mol	Chain	Res	Type	Atoms	Z	Observed(°)	Ideal(°)
2	AAA	1601	GJN	C1-N2-N1	-9.75	110.79	120.41
2	BBB	1601	GJN	C6-C5-C4	6.76	129.45	120.40
2	BBB	1601	GJN	C7-C8-C3	6.65	126.99	118.17
2	BBB	1601	GJN	C1-N2-N1	-5.05	115.43	120.41
2	AAA	1601	GJN	C-N1-N2	4.69	133.98	120.75
2	BBB	1601	GJN	C9-C-N	-4.62	117.28	123.36
2	AAA	1601	GJN	C6-C5-C4	4.59	126.54	120.40
2	BBB	1601	GJN	C6-C7-C8	-4.57	113.45	120.94
2	AAA	1601	GJN	C5-C4-C3	-4.19	114.36	120.09
2	CCC	1601	GJN	C7-C8-C3	4.09	123.59	118.17
2	AAA	1601	GJN	C7-C8-C3	3.86	123.29	118.17
2	AAA	1601	GJN	C10-C9-C	3.71	125.03	120.31
2	BBB	1601	GJN	C5-C4-C3	-3.64	115.12	120.09
2	AAA	1601	GJN	C12-C11-C10	-3.53	116.52	120.54
2	AAA	1601	GJN	C11-C10-C15	3.49	123.92	117.68
2	AAA	1601	GJN	C6-C7-C8	-3.17	115.75	120.94
2	CCC	1601	GJN	C6-C7-C8	-3.12	115.82	120.94
2	CCC	1601	GJN	C15-C10-C9	-3.07	116.23	120.75
2	BBB	1601	GJN	C15-C10-C9	-3.01	116.31	120.75
2	CCC	1601	GJN	C4-C3-C8	-2.50	116.20	120.76
2	BBB	1601	GJN	C4-C3-C8	-2.37	116.42	120.76
2	AAA	1601	GJN	C15-C10-C9	-2.15	117.59	120.75

There are no chirality outliers.

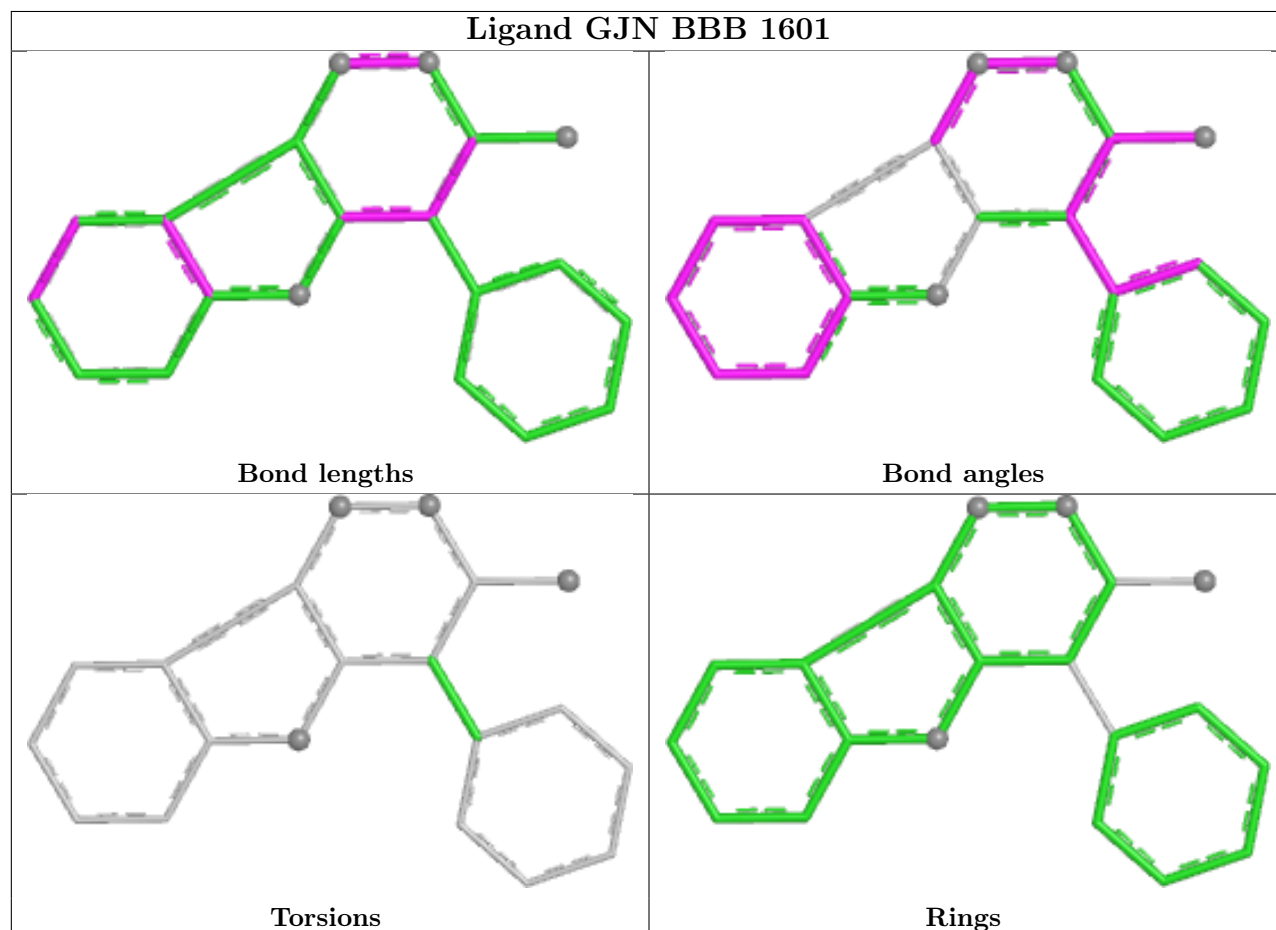
There are no torsion outliers.

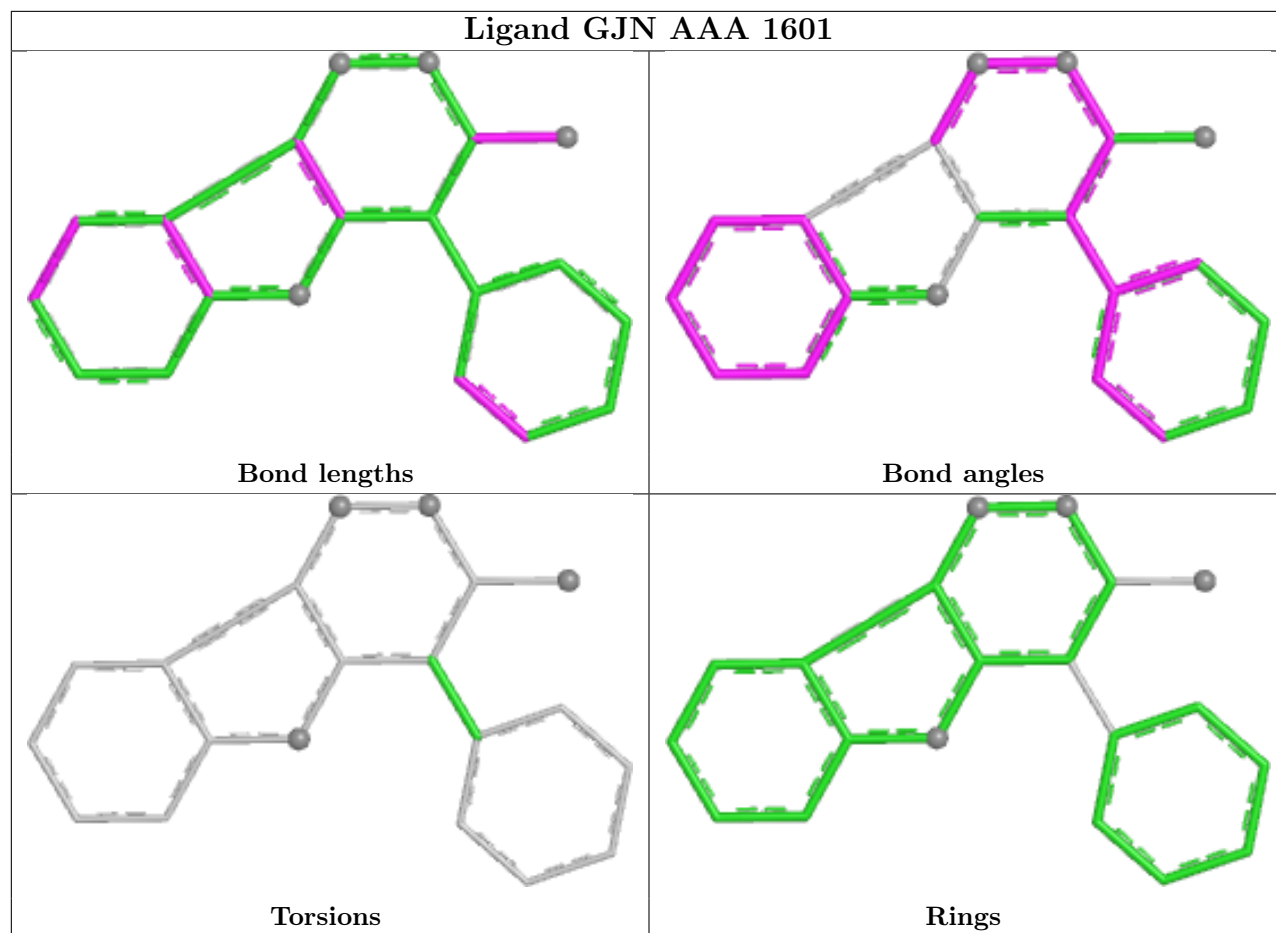
There are no ring outliers.

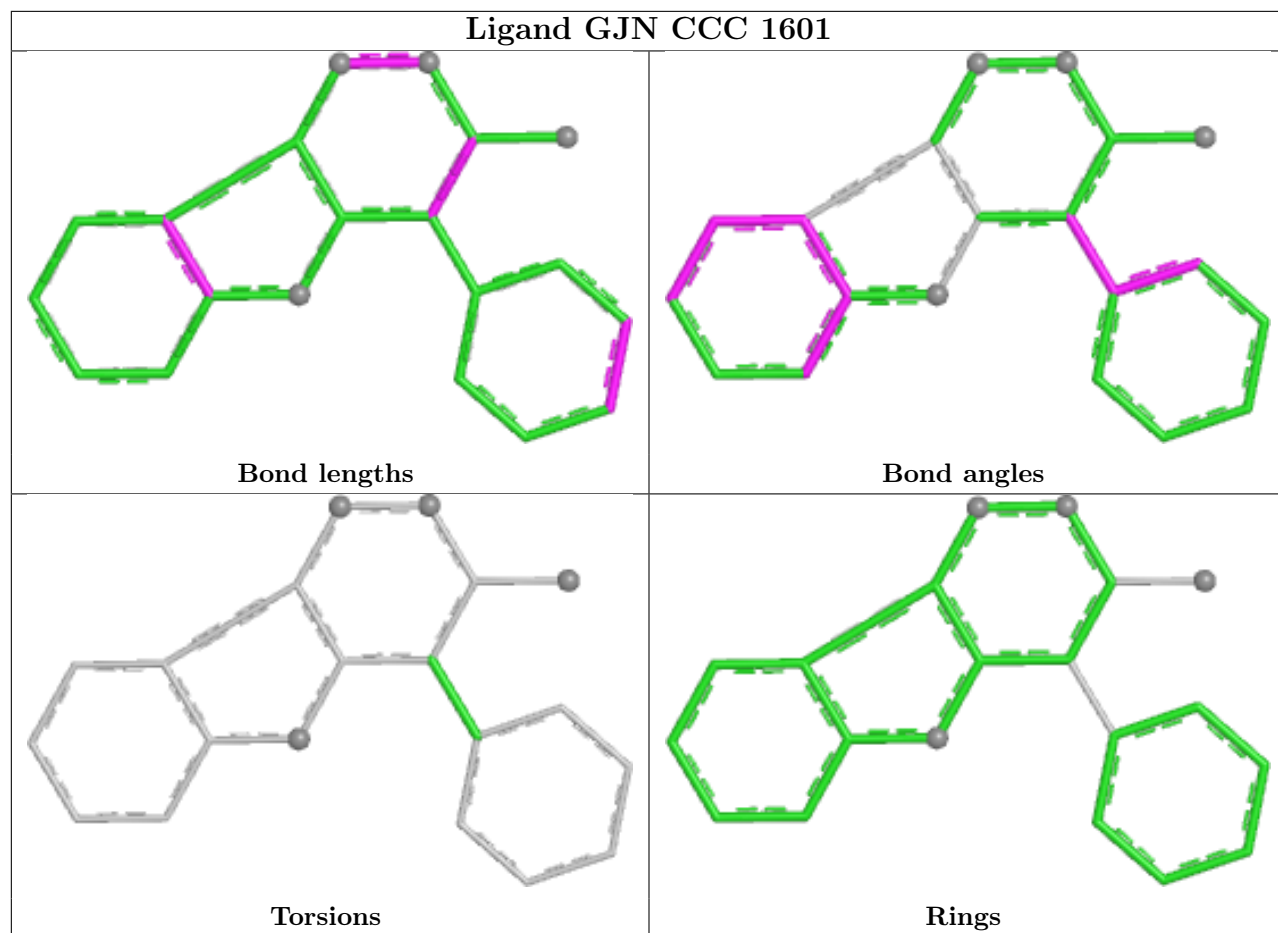
No monomer is involved in short contacts.

The following is a two-dimensional graphical depiction of Mogul quality analysis of bond lengths, bond angles, torsion angles, and ring geometry for all instances of the Ligand of Interest. In addition, ligands with molecular weight > 250 and outliers as shown on the validation Tables will also be included. For torsion angles, if less than 5% of the Mogul distribution of torsion angles is within 10 degrees of the torsion angle in question, then that torsion angle is considered an outlier.

Any bond that is central to one or more torsion angles identified as an outlier by Mogul will be highlighted in the graph. For rings, the root-mean-square deviation (RMSD) between the ring in question and similar rings identified by Mogul is calculated over all ring torsion angles. If the average RMSD is greater than 60 degrees and the minimal RMSD between the ring in question and any Mogul-identified rings is also greater than 60 degrees, then that ring is considered an outlier. The outliers are highlighted in purple. The color gray indicates Mogul did not find sufficient equivalents in the CSD to analyse the geometry.







5.7 Other polymers [i](#)

There are no such residues in this entry.

5.8 Polymer linkage issues [i](#)

There are no chain breaks in this entry.

6 Fit of model and data

6.1 Protein, DNA and RNA chains

In the following table, the column labelled ‘#RSRZ > 2’ contains the number (and percentage) of RSRZ outliers, followed by percent RSRZ outliers for the chain as percentile scores relative to all X-ray entries and entries of similar resolution. The OWAB column contains the minimum, median, 95th percentile and maximum values of the occupancy-weighted average B-factor per residue. The column labelled ‘Q < 0.9’ lists the number of (and percentage) of residues with an average occupancy less than 0.9.

Mol	Chain	Analysed	<RSRZ>	#RSRZ > 2			OWAB(Å ²)	Q < 0.9
1	AAA	116/130 (89%)	0.06	4 (3%)	48	50	12, 23, 39, 55	1 (0%)
1	BBB	114/130 (87%)	0.43	6 (5%)	33	34	11, 27, 46, 55	1 (0%)
1	CCC	117/130 (90%)	0.83	9 (7%)	21	21	22, 31, 51, 74	0
All	All	347/390 (88%)	0.44	19 (5%)	32	33	11, 27, 47, 74	2 (0%)

All (19) RSRZ outliers are listed below:

Mol	Chain	Res	Type	RSRZ
1	CCC	1564	ILE	6.6
1	BBB	1476	SER	3.4
1	BBB	1564	ILE	3.2
1	CCC	1541	LEU	3.2
1	CCC	1562	GLN	3.0
1	BBB	1492	LYS	3.0
1	CCC	1560	VAL	3.0
1	CCC	1449	GLU	3.0
1	CCC	1559	SER	2.7
1	CCC	1552	VAL	2.5
1	AAA	1450	LYS	2.4
1	AAA	1562	GLN	2.4
1	CCC	1563	LYS	2.2
1	BBB	1475	SER	2.2
1	AAA	1483	GLU	2.1
1	BBB	1565	GLU	2.1
1	AAA	1565	GLU	2.0
1	BBB	1452	SER	2.0
1	CCC	1551	ILE	2.0

6.2 Non-standard residues in protein, DNA, RNA chains [i](#)

There are no non-standard protein/DNA/RNA residues in this entry.

6.3 Carbohydrates [i](#)

There are no monosaccharides in this entry.

6.4 Ligands [i](#)

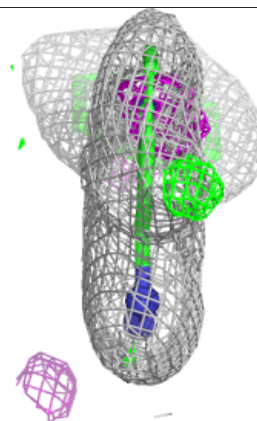
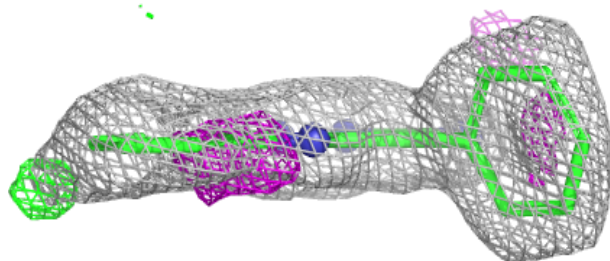
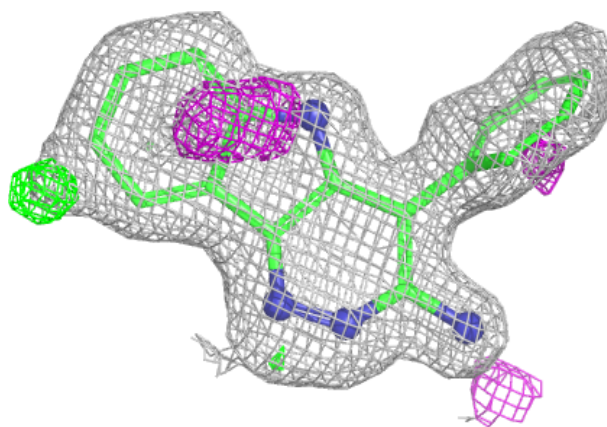
In the following table, the Atoms column lists the number of modelled atoms in the group and the number defined in the chemical component dictionary. The B-factors column lists the minimum, median, 95th percentile and maximum values of B factors of atoms in the group. The column labelled 'Q< 0.9' lists the number of atoms with occupancy less than 0.9.

Mol	Type	Chain	Res	Atoms	RSCC	RSR	B-factors(\AA^2)	Q<0.9
2	GJN	AAA	1601	20/20	0.90	0.10	22,27,31,33	0
2	GJN	CCC	1601	20/20	0.92	0.09	22,25,27,28	0
2	GJN	BBB	1601	20/20	0.94	0.09	25,31,45,48	0

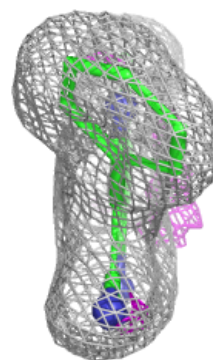
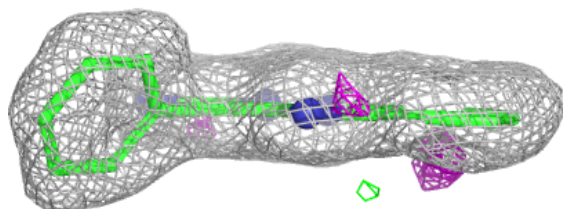
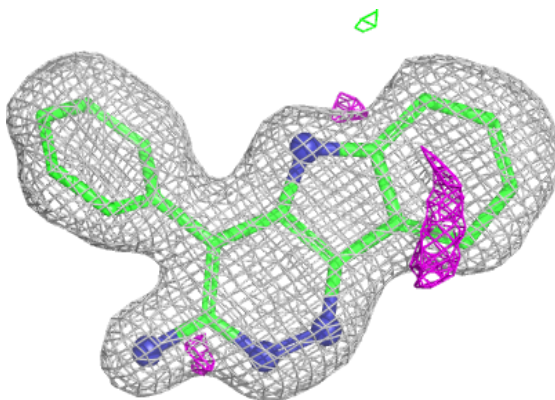
The following is a graphical depiction of the model fit to experimental electron density of all instances of the Ligand of Interest. In addition, ligands with molecular weight > 250 and outliers as shown on the geometry validation Tables will also be included. Each fit is shown from different orientation to approximate a three-dimensional view.

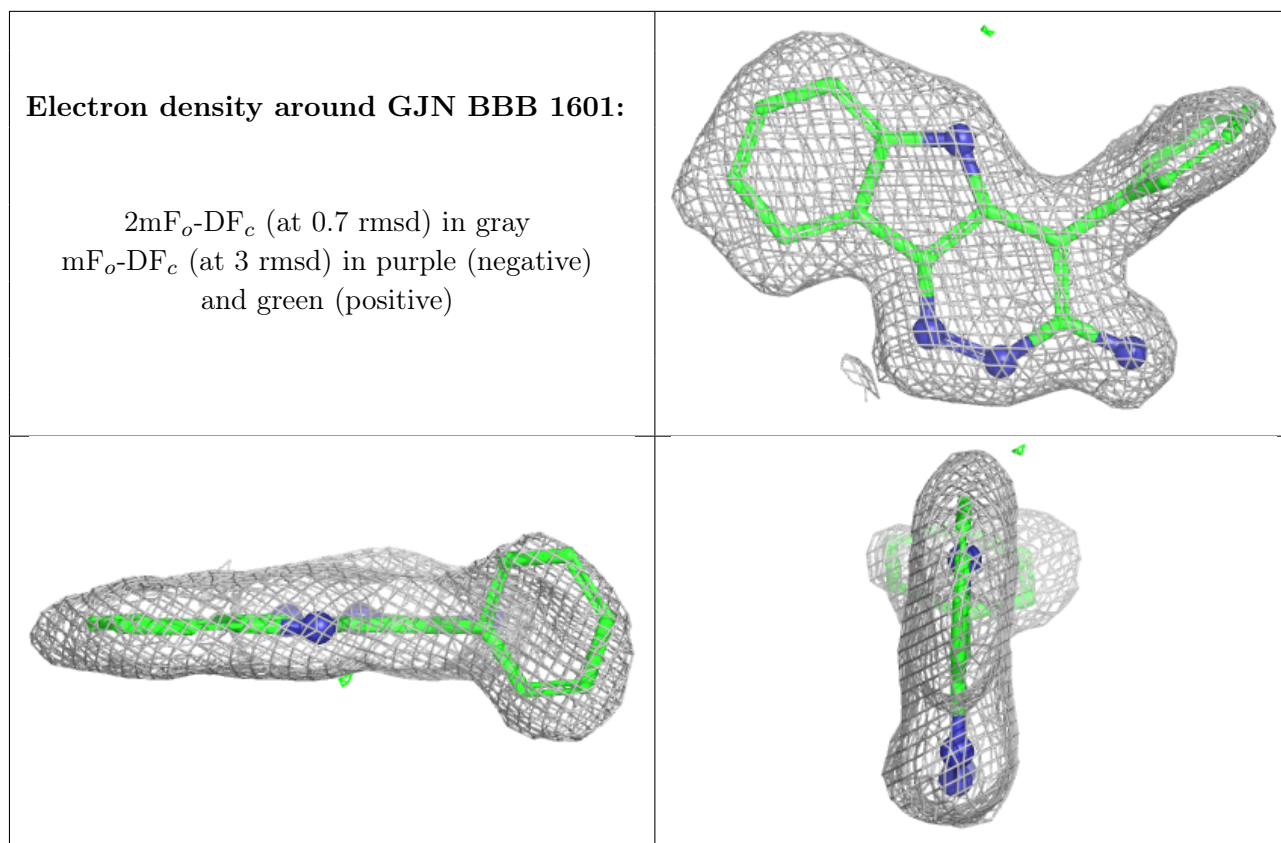
Electron density around GJN AAA 1601:

$2mF_o-DF_c$ (at 0.7 rmsd) in gray
 mF_o-DF_c (at 3 rmsd) in purple (negative)
and green (positive)

**Electron density around GJN CCC 1601:**

$2mF_o-DF_c$ (at 0.7 rmsd) in gray
 mF_o-DF_c (at 3 rmsd) in purple (negative)
and green (positive)





6.5 Other polymers ⓘ

There are no such residues in this entry.