



wwPDB EM Validation Summary Report ⓘ

May 18, 2025 – 06:01 AM EDT

PDB ID : 8SNX / pdb_00008snx
EMDB ID : EMD-40641
Title : Cryo-EM structure of the respiratory syncytial virus polymerase (L:P) bound to the leader promoter
Authors : Cao, D.; Gao, Y.; Chen, Z.; Gooneratne, I.; Roesler, C.; Mera, C.; Liang, B.
Deposited on : 2023-04-28
Resolution : 3.40 Å(reported)

This is a wwPDB EM Validation Summary Report for a publicly released PDB entry.

We welcome your comments at validation@mail.wwpdb.org

A user guide is available at

<https://www.wwpdb.org/validation/2017/EMValidationReportHelp>
with specific help available everywhere you see the ⓘ symbol.

The types of validation reports are described at

<http://www.wwpdb.org/validation/2017/FAQs#types>.

The following versions of software and data (see [references ⓘ](#)) were used in the production of this report:

EMDB validation analysis : 0.0.1.dev118
MolProbity : 4-5-2 with Phenix2.0rc1
Percentile statistics : 20231227.v01 (using entries in the PDB archive December 27th 2023)
MapQ : 1.9.13
Ideal geometry (proteins) : Engh & Huber (2001)
Ideal geometry (DNA, RNA) : Parkinson et al. (1996)
Validation Pipeline (wwPDB-VP) : 2.43.1

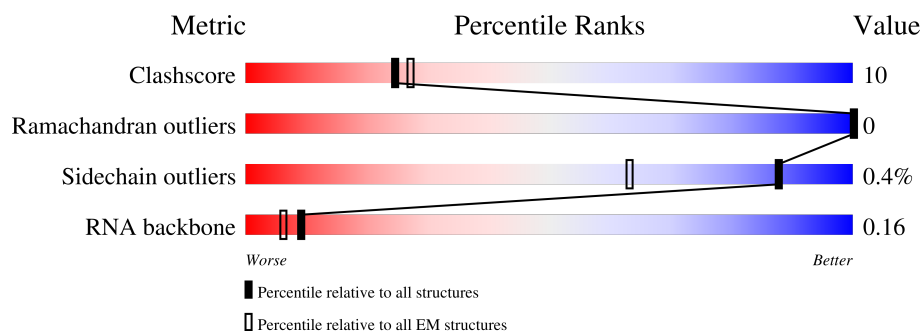
1 Overall quality at a glance

The following experimental techniques were used to determine the structure:

ELECTRON MICROSCOPY

The reported resolution of this entry is 3.40 Å.

Percentile scores (ranging between 0-100) for global validation metrics of the entry are shown in the following graphic. The table shows the number of entries on which the scores are based.



Metric	Whole archive (#Entries)	EM structures (#Entries)
Clashscore	210492	15764
Ramachandran outliers	207382	16835
Sidechain outliers	206894	16415
RNA backbone	6643	2191

The table below summarises the geometric issues observed across the polymeric chains and their fit to the map. The red, orange, yellow and green segments of the bar indicate the fraction of residues that contain outliers for ≥ 3 , 2, 1 and 0 types of geometric quality criteria respectively. A grey segment represents the fraction of residues that are not modelled. The numeric value for each fraction is indicated below the corresponding segment, with a dot representing fractions $\leq 5\%$. The upper red bar (where present) indicates the fraction of residues that have poor fit to the EM map (all-atom inclusion $< 40\%$). The numeric value is given above the bar.

Mol	Chain	Length	Quality of chain
1	A	2165	
2	B	241	
2	C	241	
2	D	241	
2	E	241	
3	T	10	

2 Entry composition [i](#)

There are 3 unique types of molecules in this entry. The entry contains 13741 atoms, of which 0 are hydrogens and 0 are deuteriums.

In the tables below, the AltConf column contains the number of residues with at least one atom in alternate conformation and the Trace column contains the number of residues modelled with at most 2 atoms.

- Molecule 1 is a protein called RNA-directed RNA polymerase L.

Mol	Chain	Residues	Atoms					AltConf	Trace
1	A	1386	Total	C	N	O	S	0	0
			11300	7277	1898	2068	57		

- Molecule 2 is a protein called Phosphoprotein.

Mol	Chain	Residues	Atoms					AltConf	Trace
2	B	59	Total	C	N	O	S	0	0
			452	277	82	89	4		
2	C	56	Total	C	N	O	S	0	0
			430	262	80	85	3		
2	D	61	Total	C	N	O	S	0	0
			479	293	89	92	5		
2	E	113	Total	C	N	O	S	0	0
			877	527	155	189	6		

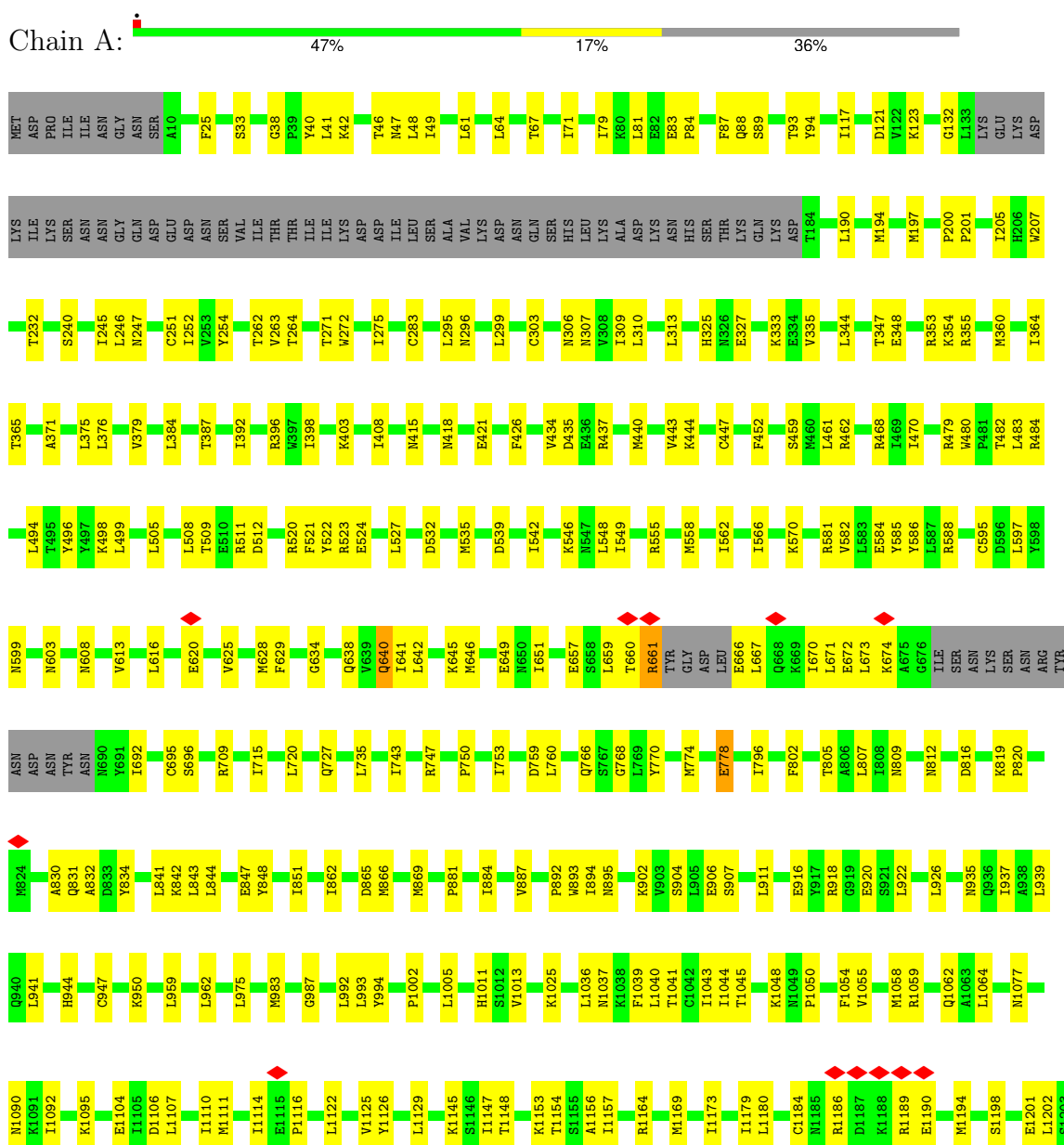
- Molecule 3 is a RNA chain called RNA (5'-R(*UP*UP*UP*UP*UP*CP*GP*CP*GP*U)-3').

Mol	Chain	Residues	Atoms					AltConf	Trace
3	T	10	Total	C	N	O	P	0	0
			203	92	28	74	9		

3 Residue-property plots

These plots are drawn for all protein, RNA, DNA and oligosaccharide chains in the entry. The first graphic for a chain summarises the proportions of the various outlier classes displayed in the second graphic. The second graphic shows the sequence view annotated by issues in geometry and atom inclusion in map density. Residues are color-coded according to the number of geometric quality criteria for which they contain at least one outlier: green = 0, yellow = 1, orange = 2 and red = 3 or more. A red diamond above a residue indicates a poor fit to the EM map for this residue (all-atom inclusion < 40%). Stretches of 2 or more consecutive residues without any outlier are shown as a green connector. Residues present in the sample, but not in the model, are shown in grey.

• Molecule 1: RNA-directed RNA polymerase L



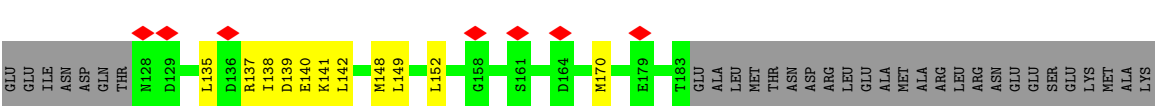
SER
GLU
LYS
MET
ALA
LYS
ASP
THR
SER
SER
GLU
GLU
VAL
SER
LEU
ASN
PRO
THR
THR
GLU
LYS
LEU
ASN
ASN
LEU
LEU
GLU
GLY
ASP
ASP
ASP
ASN
ASP
LEU
SER
LEU
ASP
PHE

● Molecule 2: Phosphoprotein



MET
GLU
PHE
ASN
PRO
THR
GLU
PHE
HIS
GLY
ASP
THR
ALA
ASN
ASN
ARG
LYS
PRO
ALA
THR
SER
LYS
PHE
LEU
GLN
ARG
LEU
LYS
GLU
SER
SER
THR
LEU
LEU
ILE
SER
GLU
THR
PHE
LYS
GLY
SER
VAL
LEU
LEU
ILE
SER
SER
TYR
VAL
ASN
THR
ILE
ILE
SER
ASP
GLU
PHE
GLU
VAL
THR
LYS
GLU
SER
SER
TYR
SER
SER
SER

THR
ILE
ILE
ASN
PRO
THR
ASN
GLU
THR
THR
ASP
THR
ALA
GLY
LYS
ASN
LYS
PRO
ALA
ASN
ASN
TYR
GLN
ARG
LEU
LYS
PRO
SER
SER
LEU
ILE
VAL
SER
PHE
LYS
LYS
GLU
THR
SER
ASP
PRO
THR
PRO
ASP
SER
PRO
LYS
LYS
LYS
LYS
ASP
PHE
SER
SER
LEU
MET
THR
THR
ASN
ASP
THR
THR
ILE
GLU
ARG
MET
PHE
ASP
ASN
GLU
GLU
GLU
GLU
SER
SER
TYR
SER
TYR
TYR



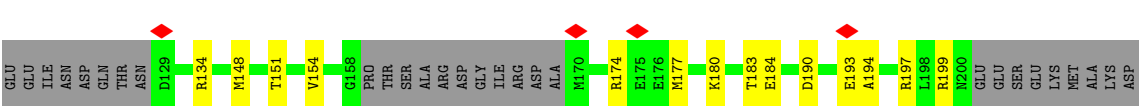
ASP
THR
SER
ASP
GLU
VAL
SER
LEU
ASN
THR
PRO
THR
GLY
LYS
LEU
ASN
ASN
LEU
LEU
GLU
GLU
ASP
SER
ASN
ASP
PHE

● Molecule 2: Phosphoprotein



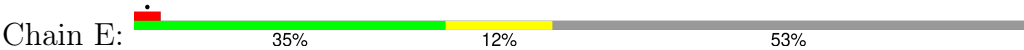
MET
GLU
LYS
PHE
ALA
PRO
THR
GLU
PHE
HIS
GLY
ASP
THR
ALA
ASN
ASN
ARG
LYS
PRO
ALA
THR
SER
LYS
PHE
LEU
GLN
ARG
LEU
LYS
PRO
SER
SER
LEU
ILE
VAL
SER
GLY
LYS
PHE
LYS
GLU
THR
SER
PRO
LYS
ASP
SER
ASP
LYS
LYS
ASP
SER
ILE
ILE
SER
VAL
ASN
SER
SER
ILE
ASP
GLU
THR
PHE
ASP
ASN
THR
LYS
GLU
GLU
GLU
SER
SER
TYR
SER
SER
SER

THR
ILE
ILE
ASN
PRO
THR
ASN
GLU
THR
THR
ASP
THR
ALA
GLY
LYS
ASN
LYS
PRO
ALA
ASN
ASN
TYR
GLN
ARG
LEU
LYS
PRO
SER
SER
ALA
ARG
ASP
GLY
ILE
SER
ASP
GLU
THR
SER
PRO
LYS
THR
PRO
ASP
SER
ASP
LYS
ASN
PHE
SER
SER
LEU
LYS
TYR
TYR
GLU
THR
THR
ILE
GLU
GLU
THR
PHE
ASP
ASN
ASN
GLU
GLU
GLU
SER
SER
TYR
SER
TYR
TYR



THR
SER
ASP
VAL
SER
LEU
ASN
PRO
THR
GLU
SER
GLY
LYS
LEU
ASN
ASN
LEU
LEU
GLU
GLY
ASP
SER
SER
ASP
ASN
ASP
ASP
LEU
SER
SER
GLU
ASP
PHE

● Molecule 2: Phosphoprotein



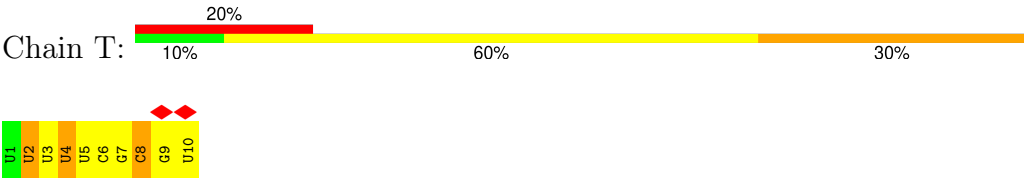
MET
GLU
LYS
PHE
ALA
PRO
THR
GLU
PHE
HIS
GLY
ASP
THR
ALA
ASN
ASN
ARG
LYS
PRO
ALA
THR
SER
LYS
PHE
LEU
GLN
ARG
LEU
LYS
PRO
SER
SER
ILE
LYS
GLY
LYS
PHE
LYS
GLU
THR
SER
PRO
LYS
LYS
PRO
LYS
LYS
ASP
SER
SER
ILE
ILE
SER
TYR
LYS
VAL
ASN
SER
SER
ILE
ASP
GLU
THR
PHE
GLU
VAL
THR
LYS
LYS
GLU
SER
PRO
ILE
THR
THR
SER
SER
TYR
SER
SER
SER

THR
ILE
ILE
ASN
PRO
THR
ASN
GLU
THR
THR
ASP
THR
ALA
GLY
LYS
ASN
LYS
PRO
ALA
ASN
ASN
TYR
GLN
ARG
LEU
LYS
PRO
SER
SER
VAL
SER
PHE
LYS
LYS
GLU
THR
ASP
PRO
THR
PRO
SER
SER
ASP
LYS
ASN
PHE
SER
SER
LEU
SER
TYR
LYS
GLU
THR
THR
ILE
GLU
GLU
THR
PHE
THR
ASP
ASN
ASN
GLU
GLU
GLU
SER
GLU
SER
SER
TYR
SER
SER
SER



P241

● Molecule 3: RNA (5'-R(*UP*UP*UP*UP*UP*CP*GP*CP*GP*U)-3')



4 Experimental information

Property	Value	Source
EM reconstruction method	SINGLE PARTICLE	Depositor
Imposed symmetry	POINT, Not provided	
Number of particles used	358385	Depositor
Resolution determination method	FSC 0.143 CUT-OFF	Depositor
CTF correction method	PHASE FLIPPING AND AMPLITUDE CORRECTION	Depositor
Microscope	FEI TITAN KRIOS	Depositor
Voltage (kV)	300	Depositor
Electron dose ($e^-/\text{\AA}^2$)	51.11	Depositor
Minimum defocus (nm)	800	Depositor
Maximum defocus (nm)	2500	Depositor
Magnification	Not provided	
Image detector	GATAN K3 (6k x 4k)	Depositor
Maximum map value	0.138	Depositor
Minimum map value	-0.075	Depositor
Average map value	0.000	Depositor
Map value standard deviation	0.006	Depositor
Recommended contour level	0.0175	Depositor
Map size (Å)	211.60063, 211.60063, 211.60063	wwPDB
Map dimensions	200, 200, 200	wwPDB
Map angles (°)	90.0, 90.0, 90.0	wwPDB
Pixel spacing (Å)	1.0580032, 1.0580032, 1.0580032	Depositor

5 Model quality [i](#)

5.1 Standard geometry [i](#)

The Z score for a bond length (or angle) is the number of standard deviations the observed value is removed from the expected value. A bond length (or angle) with $|Z| > 5$ is considered an outlier worth inspection. RMSZ is the root-mean-square of all Z scores of the bond lengths (or angles).

Mol	Chain	Bond lengths		Bond angles	
		RMSZ	$\# Z > 5$	RMSZ	$\# Z > 5$
1	A	0.19	0/11534	0.33	4/15610 (0.0%)
2	B	0.12	0/453	0.32	0/607
2	C	0.12	0/431	0.30	0/578
2	D	0.14	0/478	0.35	0/637
2	E	0.10	0/880	0.26	0/1182
3	T	0.36	0/224	0.62	0/346
All	All	0.18	0/14000	0.33	4/18960 (0.0%)

There are no bond length outliers.

All (4) bond angle outliers are listed below:

Mol	Chain	Res	Type	Atoms	Z	Observed(°)	Ideal(°)
1	A	660	THR	N-CA-C	-11.10	98.42	113.30
1	A	672	GLU	N-CA-C	-5.84	105.65	112.89
1	A	673	LEU	N-CA-C	-5.70	105.07	111.28
1	A	570	LYS	N-CA-C	-5.00	105.47	111.03

There are no chirality outliers.

There are no planarity outliers.

5.2 Too-close contacts [i](#)

In the following table, the Non-H and H(model) columns list the number of non-hydrogen atoms and hydrogen atoms in the chain respectively. The H(added) column lists the number of hydrogen atoms added and optimized by MolProbity. The Clashes column lists the number of clashes within the asymmetric unit, whereas Symm-Clashes lists symmetry-related clashes.

Mol	Chain	Non-H	H(model)	H(added)	Clashes	Symm-Clashes
1	A	11300	0	11511	248	0
2	B	452	0	470	19	0
2	C	430	0	445	8	0

Continued on next page...

Continued from previous page...

Mol	Chain	Non-H	H(model)	H(added)	Clashes	Symm-Clashes
2	D	479	0	501	11	0
2	E	877	0	866	23	0
3	T	203	0	106	9	0
All	All	13741	0	13899	286	0

The all-atom clashscore is defined as the number of clashes found per 1000 atoms (including hydrogen atoms). The all-atom clashscore for this structure is 10.

The worst 5 of 286 close contacts within the same asymmetric unit are listed below, sorted by their clash magnitude.

Atom-1	Atom-2	Interatomic distance (Å)	Clash overlap (Å)
1:A:1045:THR:HG21	1:A:1186:ARG:CG	1.88	1.04
1:A:1045:THR:OG1	1:A:1186:ARG:HD3	1.59	1.00
1:A:659:LEU:HD13	1:A:670:ILE:HD13	1.45	0.96
1:A:1092:ILE:HG23	1:A:1445:MET:SD	2.07	0.94
1:A:1045:THR:HG21	1:A:1186:ARG:HG2	1.52	0.92

There are no symmetry-related clashes.

5.3 Torsion angles [i](#)

5.3.1 Protein backbone [i](#)

In the following table, the Percentiles column shows the percent Ramachandran outliers of the chain as a percentile score with respect to all PDB entries followed by that with respect to all EM entries.

The Analysed column shows the number of residues for which the backbone conformation was analysed, and the total number of residues.

Mol	Chain	Analysed	Favoured	Allowed	Outliers	Percentiles	
1	A	1378/2165 (64%)	1333 (97%)	45 (3%)	0	100	100
2	B	57/241 (24%)	56 (98%)	1 (2%)	0	100	100
2	C	54/241 (22%)	53 (98%)	1 (2%)	0	100	100
2	D	57/241 (24%)	56 (98%)	1 (2%)	0	100	100
2	E	111/241 (46%)	109 (98%)	2 (2%)	0	100	100
All	All	1657/3129 (53%)	1607 (97%)	50 (3%)	0	100	100

There are no Ramachandran outliers to report.

5.3.2 Protein sidechains [i](#)

In the following table, the Percentiles column shows the percent sidechain outliers of the chain as a percentile score with respect to all PDB entries followed by that with respect to all EM entries.

The Analysed column shows the number of residues for which the sidechain conformation was analysed, and the total number of residues.

Mol	Chain	Analysed	Rotameric	Outliers	Percentiles	
1	A	1286/2012 (64%)	1280 (100%)	6 (0%)	86	91
2	B	49/220 (22%)	49 (100%)	0	100	100
2	C	47/220 (21%)	47 (100%)	0	100	100
2	D	52/220 (24%)	52 (100%)	0	100	100
2	E	99/220 (45%)	99 (100%)	0	100	100
All	All	1533/2892 (53%)	1527 (100%)	6 (0%)	88	93

5 of 6 residues with a non-rotameric sidechain are listed below:

Mol	Chain	Res	Type
1	A	666	GLU
1	A	674	LYS
1	A	778	GLU
1	A	640	GLN
1	A	620	GLU

Sometimes sidechains can be flipped to improve hydrogen bonding and reduce clashes. 5 of 12 such sidechains are listed below:

Mol	Chain	Res	Type
1	A	632	GLN
1	A	650	ASN
2	E	150	HIS
1	A	980	ASN
1	A	372	GLN

5.3.3 RNA [i](#)

Mol	Chain	Analysed	Backbone Outliers	Pucker Outliers
3	T	9/10 (90%)	6 (66%)	0

5 of 6 RNA backbone outliers are listed below:

Mol	Chain	Res	Type
3	T	2	U
3	T	3	U
3	T	4	U
3	T	8	C
3	T	9	G

There are no RNA pucker outliers to report.

5.4 Non-standard residues in protein, DNA, RNA chains [i](#)

There are no non-standard protein/DNA/RNA residues in this entry.

5.5 Carbohydrates [i](#)

There are no oligosaccharides in this entry.

5.6 Ligand geometry [i](#)

There are no ligands in this entry.

5.7 Other polymers [i](#)

There are no such residues in this entry.

5.8 Polymer linkage issues [i](#)

There are no chain breaks in this entry.

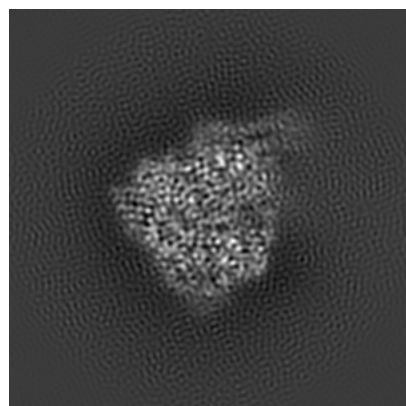
6 Map visualisation [i](#)

This section contains visualisations of the EMDB entry EMD-40641. These allow visual inspection of the internal detail of the map and identification of artifacts.

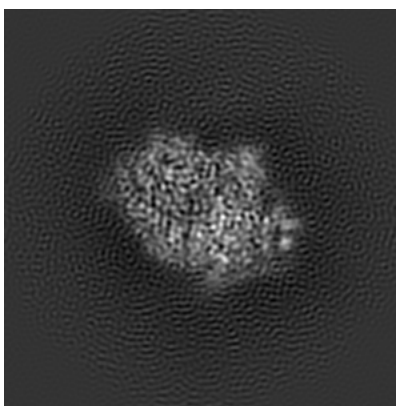
Images derived from a raw map, generated by summing the deposited half-maps, are presented below the corresponding image components of the primary map to allow further visual inspection and comparison with those of the primary map.

6.1 Orthogonal projections [i](#)

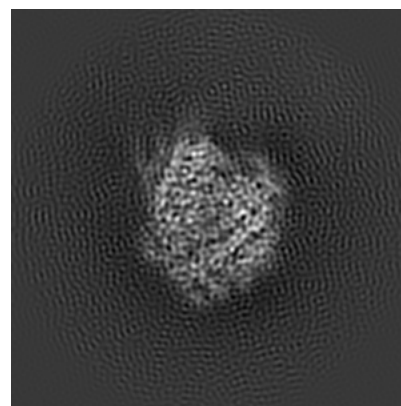
6.1.1 Primary map



X

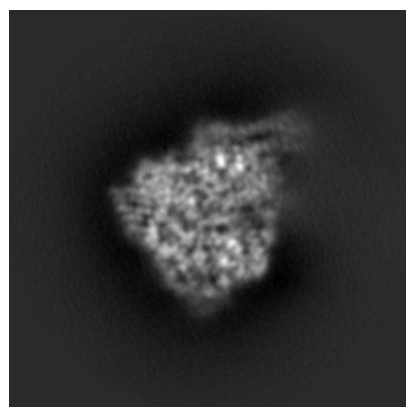


Y

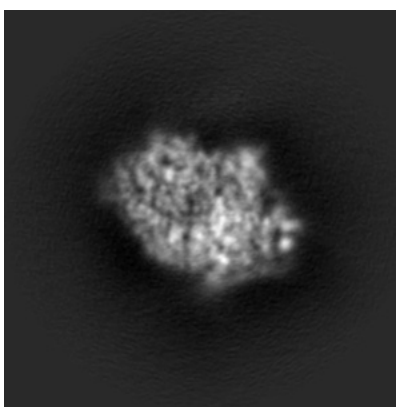


Z

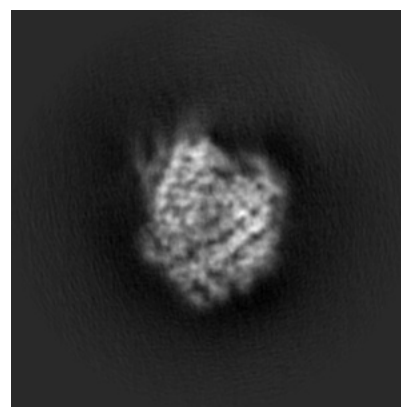
6.1.2 Raw map



X



Y

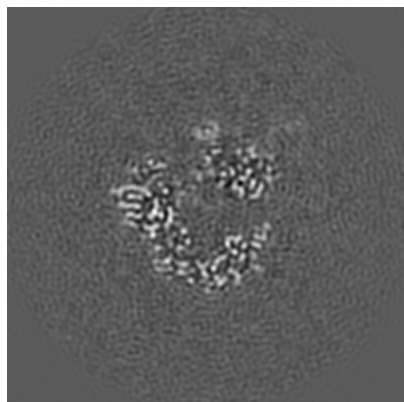


Z

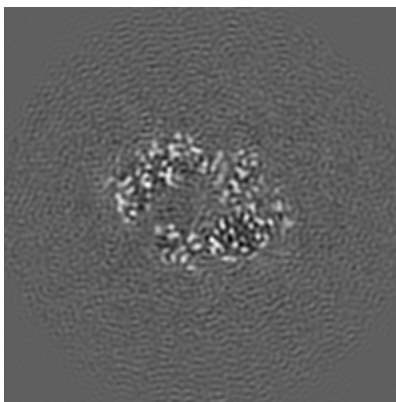
The images above show the map projected in three orthogonal directions.

6.2 Central slices [i](#)

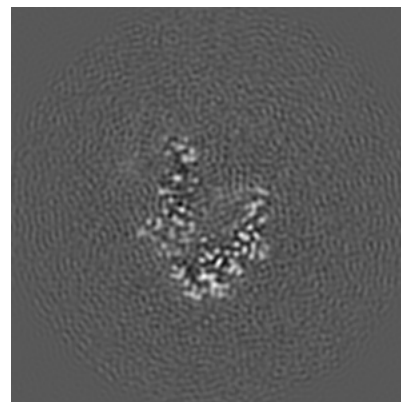
6.2.1 Primary map



X Index: 100

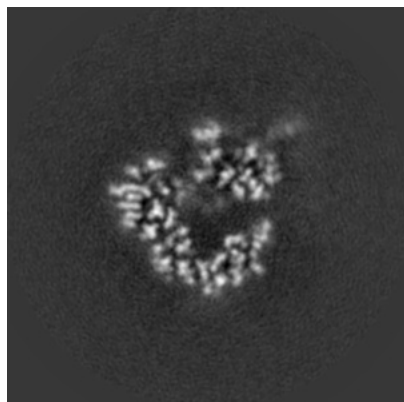


Y Index: 100

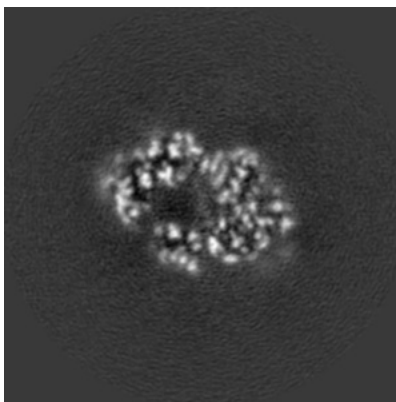


Z Index: 100

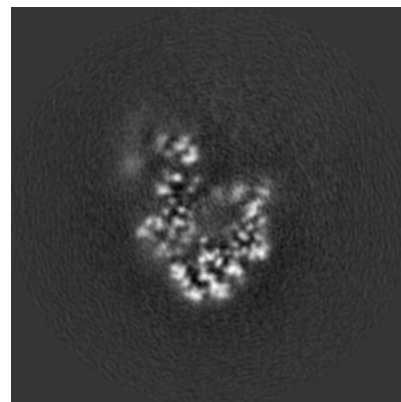
6.2.2 Raw map



X Index: 100



Y Index: 100

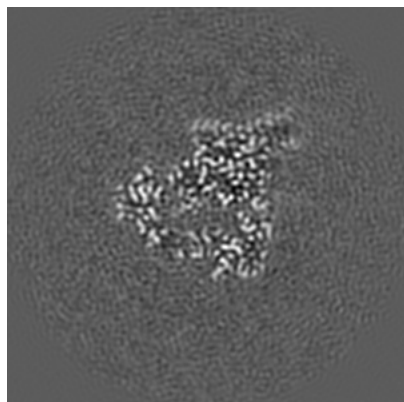


Z Index: 100

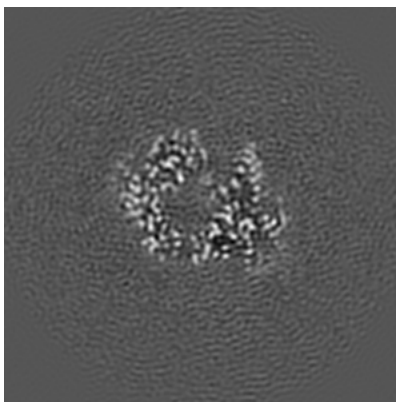
The images above show central slices of the map in three orthogonal directions.

6.3 Largest variance slices [i](#)

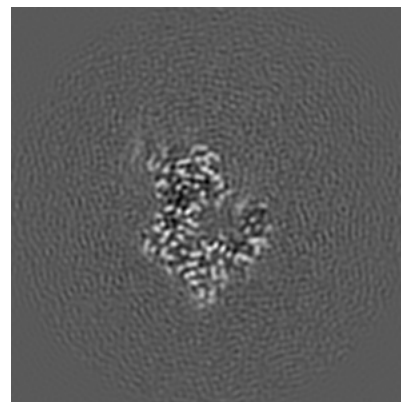
6.3.1 Primary map



X Index: 90

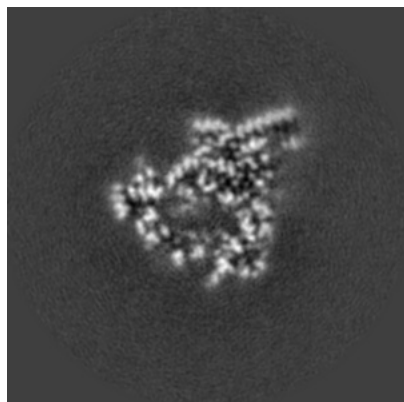


Y Index: 107

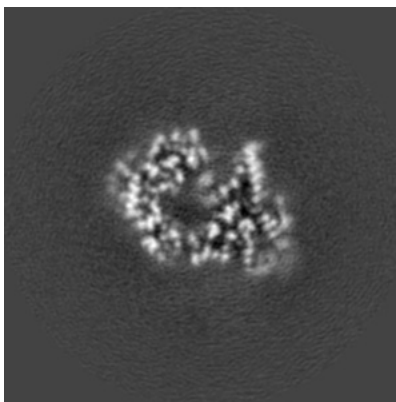


Z Index: 108

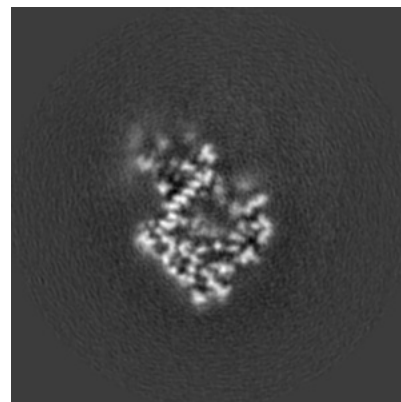
6.3.2 Raw map



X Index: 91



Y Index: 107

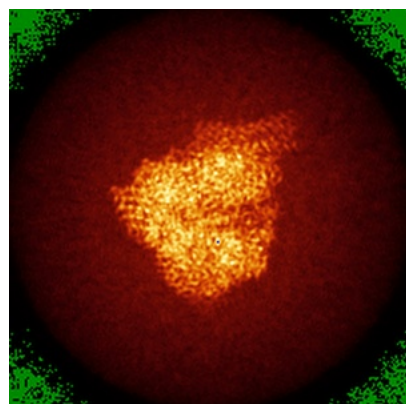


Z Index: 105

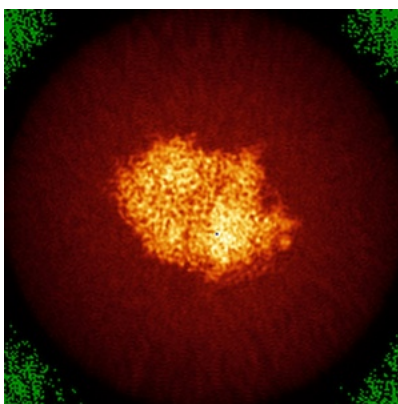
The images above show the largest variance slices of the map in three orthogonal directions.

6.4 Orthogonal standard-deviation projections (False-color) [i](#)

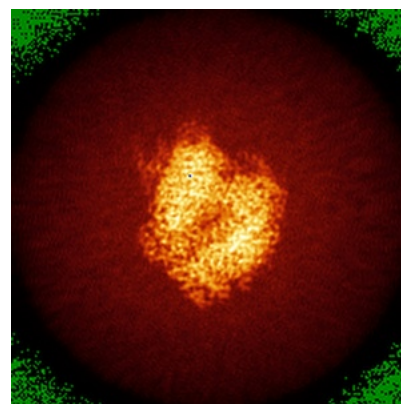
6.4.1 Primary map



X

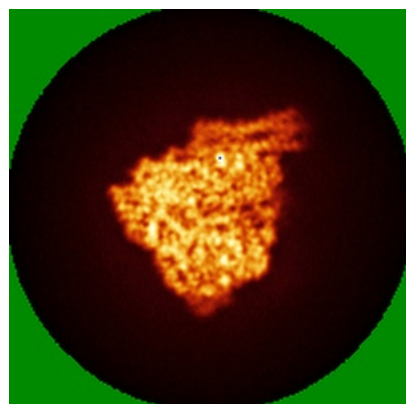


Y

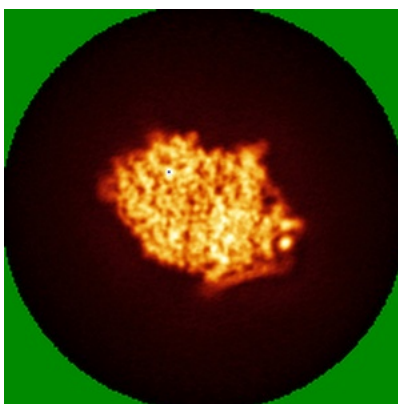


Z

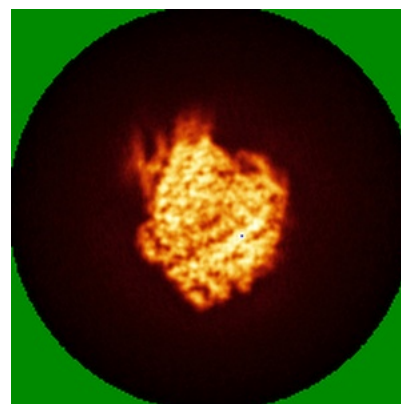
6.4.2 Raw map



X



Y

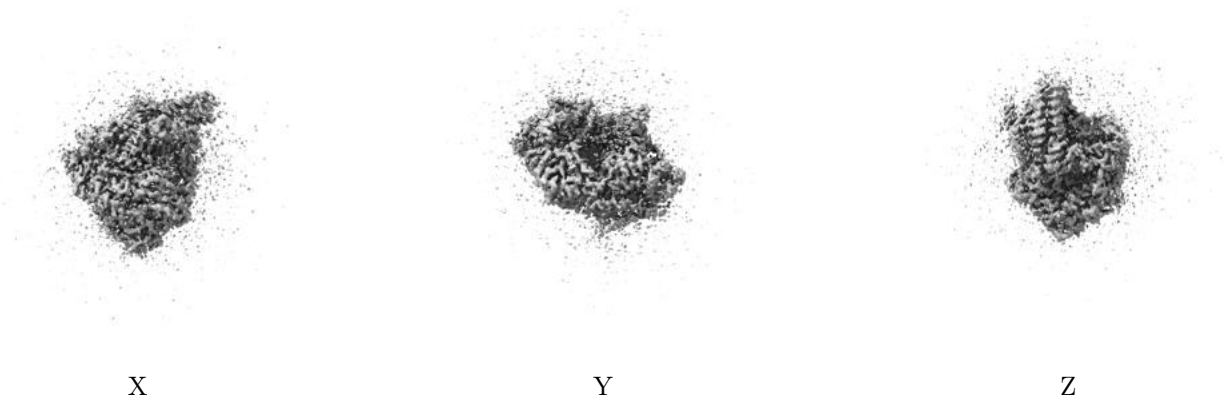


Z

The images above show the map standard deviation projections with false color in three orthogonal directions. Minimum values are shown in green, max in blue, and dark to light orange shades represent small to large values respectively.

6.5 Orthogonal surface views [i](#)

6.5.1 Primary map



The images above show the 3D surface view of the map at the recommended contour level 0.0175. These images, in conjunction with the slice images, may facilitate assessment of whether an appropriate contour level has been provided.

6.5.2 Raw map



These images show the 3D surface of the raw map. The raw map's contour level was selected so that its surface encloses the same volume as the primary map does at its recommended contour level.

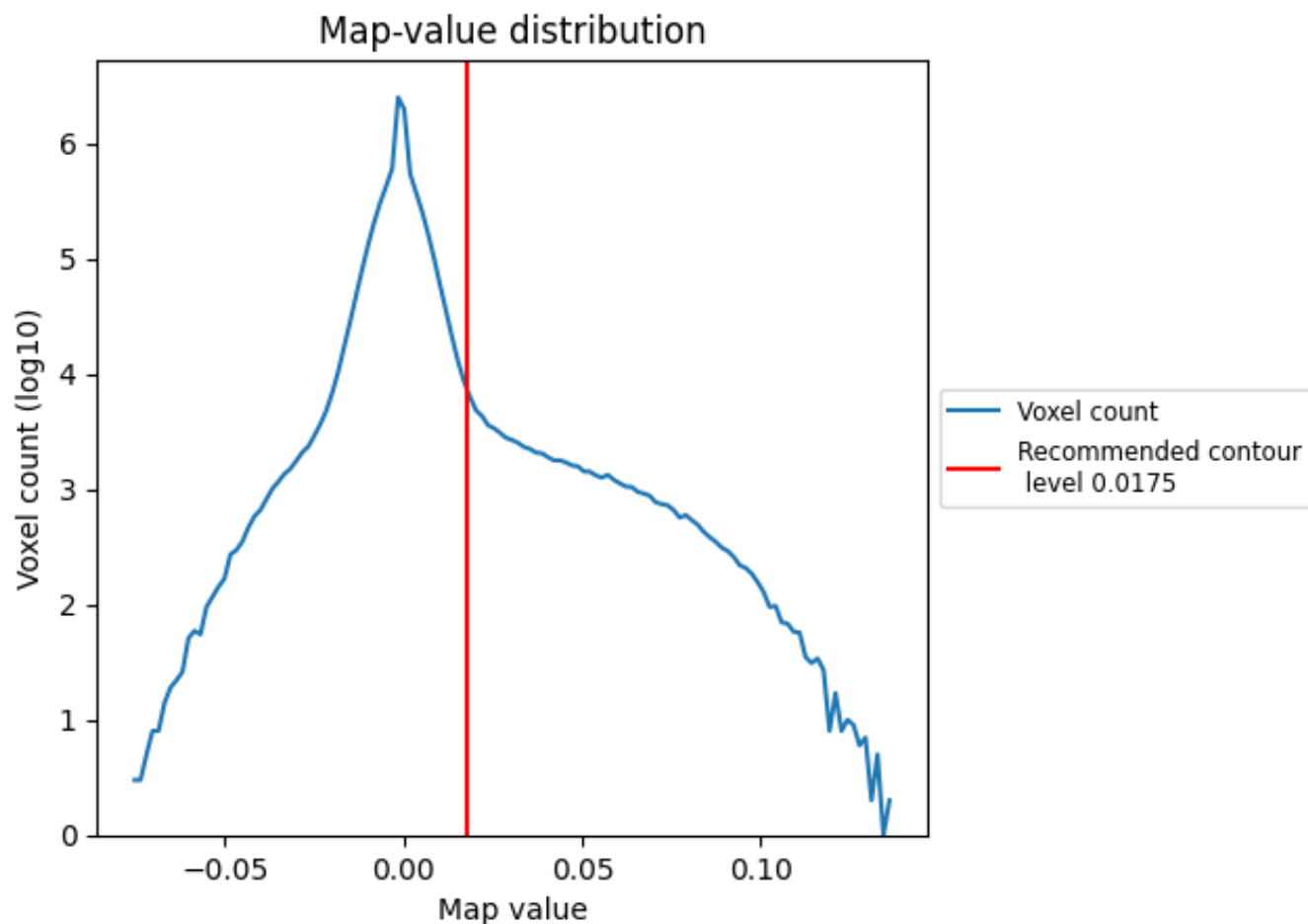
6.6 Mask visualisation [i](#)

This section was not generated. No masks/segmentation were deposited.

7 Map analysis [i](#)

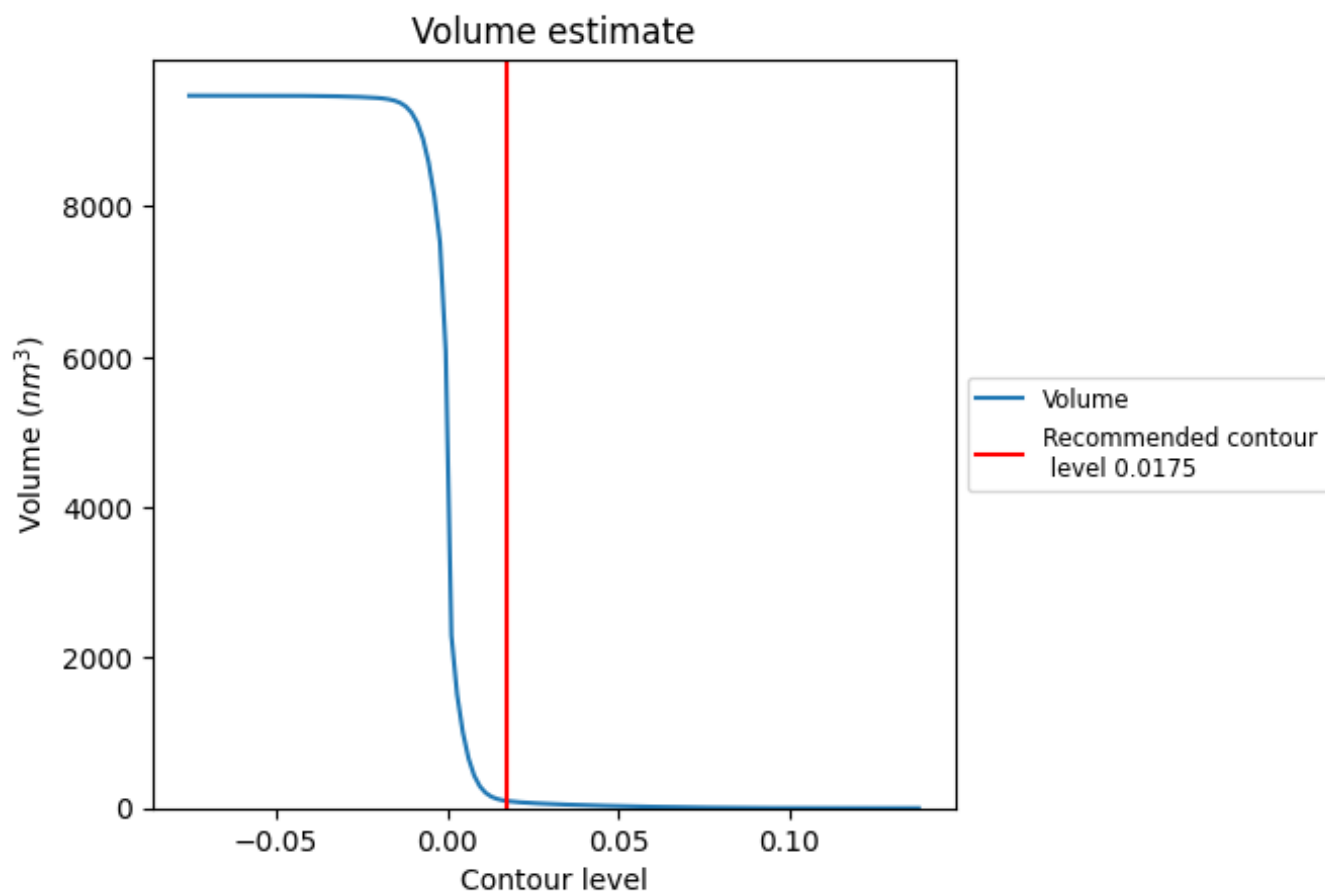
This section contains the results of statistical analysis of the map.

7.1 Map-value distribution [i](#)



The map-value distribution is plotted in 128 intervals along the x-axis. The y-axis is logarithmic. A spike in this graph at zero usually indicates that the volume has been masked.

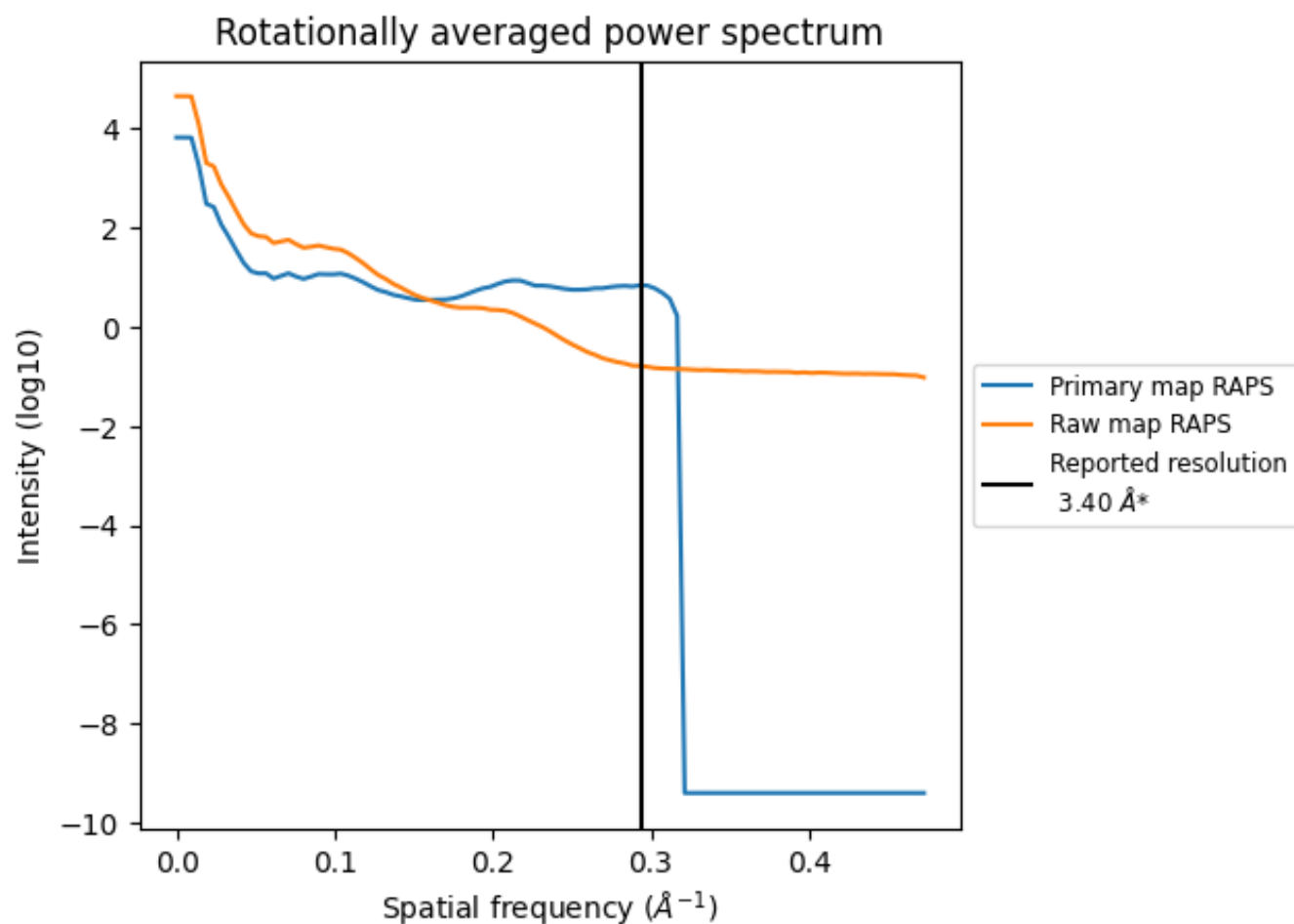
7.2 Volume estimate [i](#)



The volume at the recommended contour level is 95 nm³; this corresponds to an approximate mass of 86 kDa.

The volume estimate graph shows how the enclosed volume varies with the contour level. The recommended contour level is shown as a vertical line and the intersection between the line and the curve gives the volume of the enclosed surface at the given level.

7.3 Rotationally averaged power spectrum ⓘ

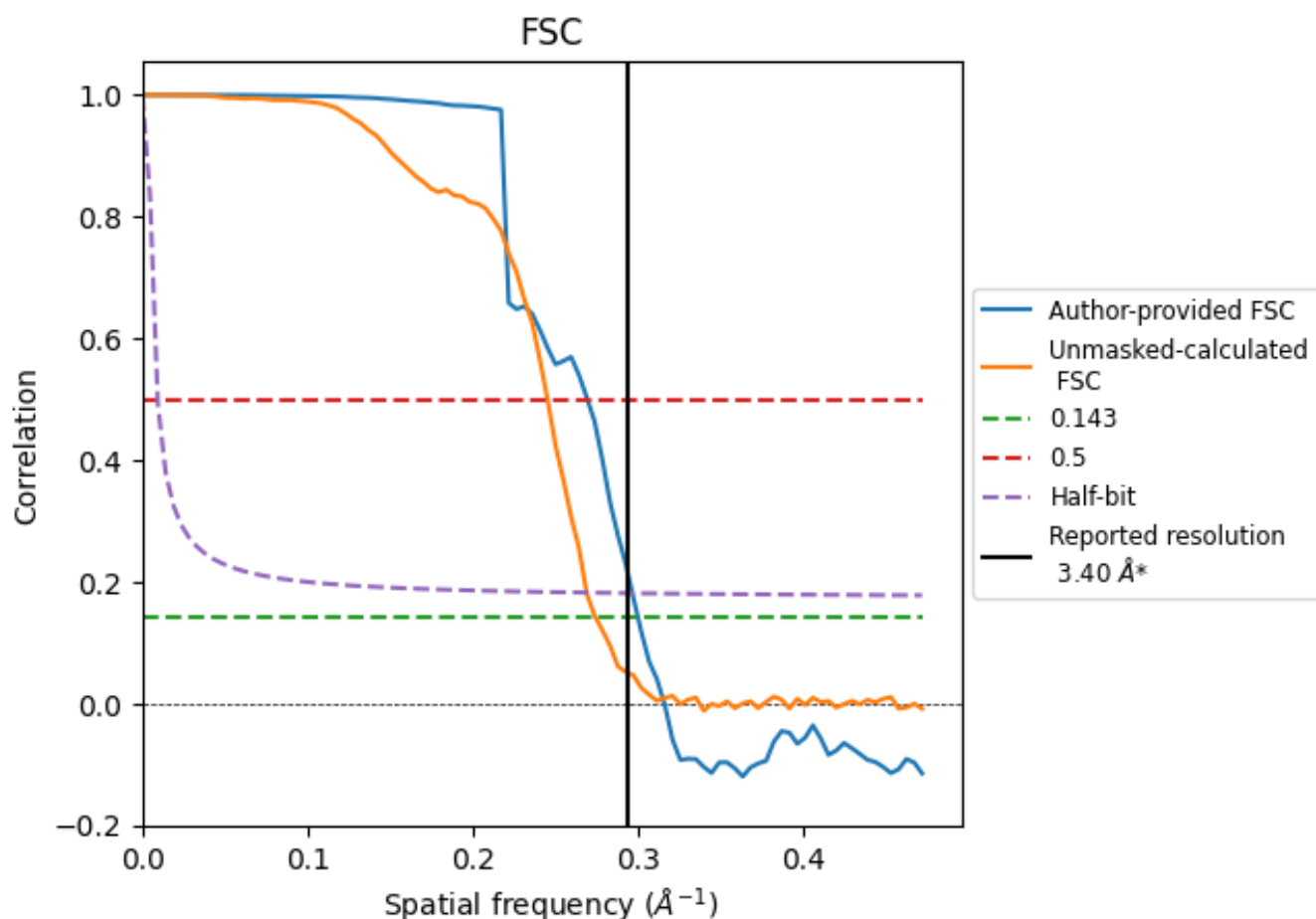


*Reported resolution corresponds to spatial frequency of 0.294 Å⁻¹

8 Fourier-Shell correlation [i](#)

Fourier-Shell Correlation (FSC) is the most commonly used method to estimate the resolution of single-particle and subtomogram-averaged maps. The shape of the curve depends on the imposed symmetry, mask and whether or not the two 3D reconstructions used were processed from a common reference. The reported resolution is shown as a black line. A curve is displayed for the half-bit criterion in addition to lines showing the 0.143 gold standard cut-off and 0.5 cut-off.

8.1 FSC [i](#)



*Reported resolution corresponds to spatial frequency of 0.294 \AA^{-1}

8.2 Resolution estimates [i](#)

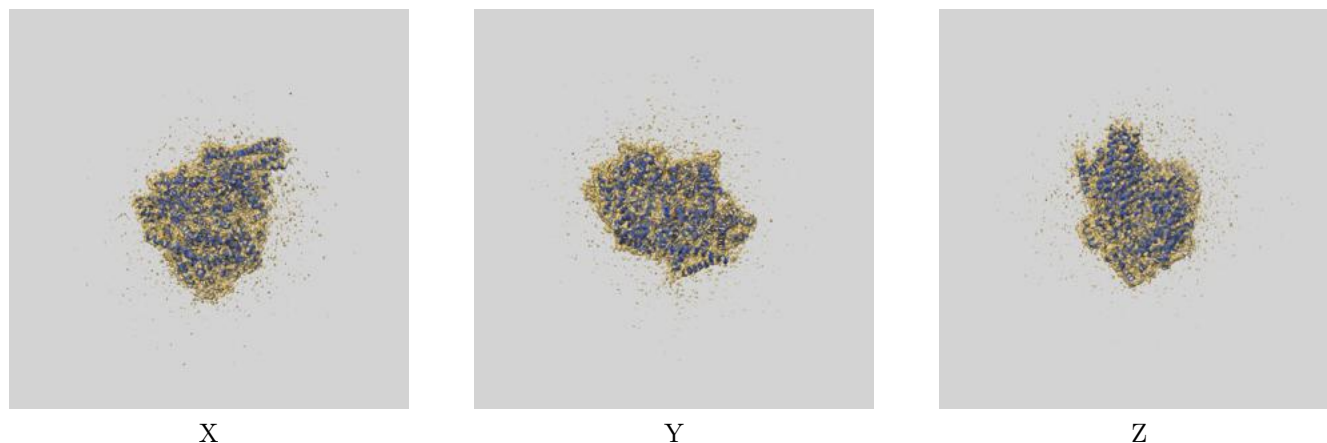
Resolution estimate (Å)	Estimation criterion (FSC cut-off)		
	0.143	0.5	Half-bit
Reported by author	3.40	-	-
Author-provided FSC curve	3.33	3.71	3.37
Unmasked-calculated*	3.65	4.07	3.71

*Resolution estimate based on FSC curve calculated by comparison of deposited half-maps.

9 Map-model fit [i](#)

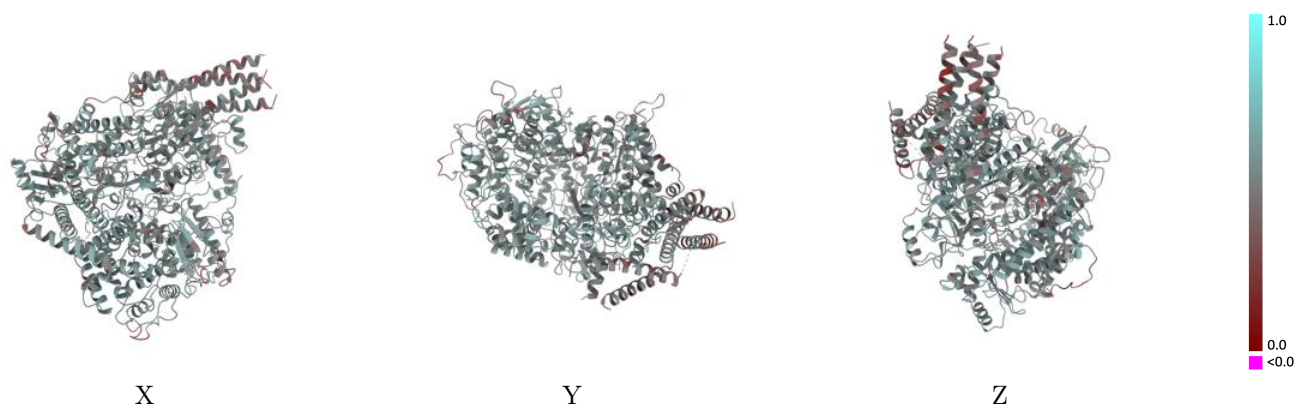
This section contains information regarding the fit between EMDB map EMD-40641 and PDB model 8SNX. Per-residue inclusion information can be found in [section 3](#) on [page 4](#).

9.1 Map-model overlay [i](#)



The images above show the 3D surface view of the map at the recommended contour level 0.0175 at 50% transparency in yellow overlaid with a ribbon representation of the model coloured in blue. These images allow for the visual assessment of the quality of fit between the atomic model and the map.

9.2 Q-score mapped to coordinate model [i](#)



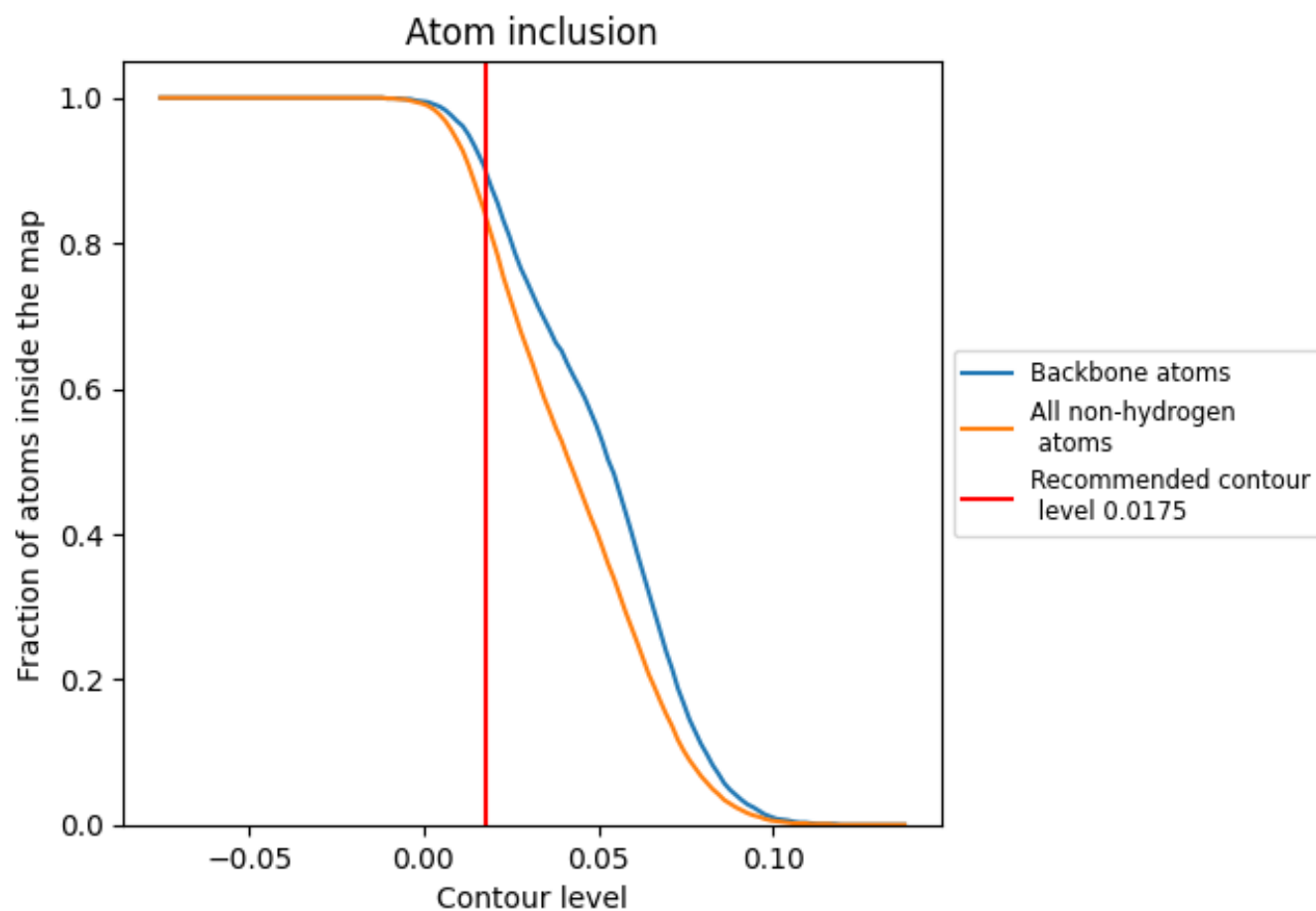
The images above show the model with each residue coloured according to its Q-score. This shows their resolvability in the map with higher Q-score values reflecting better resolvability. Please note: Q-score is calculating the resolvability of atoms, and thus high values are only expected at resolutions at which atoms can be resolved. Low Q-score values may therefore be expected for many entries.

9.3 Atom inclusion mapped to coordinate model [i](#)



The images above show the model with each residue coloured according to its atom inclusion. This shows to what extent they are inside the map at the recommended contour level (0.0175).

9.4 Atom inclusion [i](#)



At the recommended contour level, 90% of all backbone atoms, 84% of all non-hydrogen atoms, are inside the map.

9.5 Map-model fit summary ⓘ

The table lists the average atom inclusion at the recommended contour level (0.0175) and Q-score for the entire model and for each chain.

Chain	Atom inclusion	Q-score
All	<div><div></div>0.8420</div>	<div><div></div>0.5230</div>
A	<div><div></div>0.8680</div>	<div><div></div>0.5360</div>
B	<div><div></div>0.8090</div>	<div><div></div>0.5060</div>
C	<div><div></div>0.6990</div>	<div><div></div>0.4420</div>
D	<div><div></div>0.6600</div>	<div><div></div>0.4340</div>
E	<div><div></div>0.7280</div>	<div><div></div>0.4660</div>
T	<div><div></div>0.6500</div>	<div><div></div>0.4890</div>

1.0

0.0

<0.0