



# Full wwPDB X-ray Structure Validation Report ⓘ

Jun 13, 2024 – 02:42 AM EDT

PDB ID : 3SD0  
Title : Identification of a Glycogen Synthase Kinase-3b Inhibitor that Attenuates Hyperactivity in CLOCK Mutant Mice  
Authors : Mesecar, A.M.; Walters, R.L.  
Deposited on : 2011-06-08  
Resolution : 2.70 Å(reported)

This is a Full wwPDB X-ray Structure Validation Report for a publicly released PDB entry.

We welcome your comments at [validation@mail.wwpdb.org](mailto:validation@mail.wwpdb.org)

A user guide is available at

<https://www.wwpdb.org/validation/2017/XrayValidationReportHelp>

with specific help available everywhere you see the ⓘ symbol.

The types of validation reports are described at

<http://www.wwpdb.org/validation/2017/FAQs#types>.

---

The following versions of software and data (see [references ⓘ](#)) were used in the production of this report:

MolProbity	:	4.02b-467
Mogul	:	2022.3.0, CSD as543be (2022)
Xtriage (Phenix)	:	1.20.1
EDS	:	2.36.2
buster-report	:	1.1.7 (2018)
Percentile statistics	:	20191225.v01 (using entries in the PDB archive December 25th 2019)
Refmac	:	5.8.0158
CCP4	:	7.0.044 (Gargrove)
Ideal geometry (proteins)	:	Engh & Huber (2001)
Ideal geometry (DNA, RNA)	:	Parkinson et al. (1996)
Validation Pipeline (wwPDB-VP)	:	2.36.2

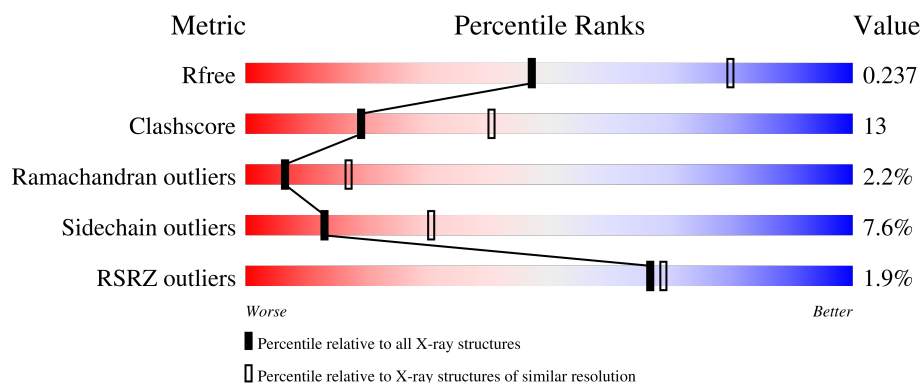
# 1 Overall quality at a glance

The following experimental techniques were used to determine the structure:

*X-RAY DIFFRACTION*



The reported resolution of this entry is 2.70 Å.

Percentile scores (ranging between 0-100) for global validation metrics of the entry are shown in the following graphic. The table shows the number of entries on which the scores are based.



Metric	Whole archive (#Entries)	Similar resolution (#Entries, resolution range(Å))
$R_{free}$	130704	2808 (2.70-2.70)
Clashscore	141614	3122 (2.70-2.70)
Ramachandran outliers	138981	3069 (2.70-2.70)
Sidechain outliers	138945	3069 (2.70-2.70)
RSRZ outliers	127900	2737 (2.70-2.70)

The table below summarises the geometric issues observed across the polymeric chains and their fit to the electron density. The red, orange, yellow and green segments of the lower bar indicate the fraction of residues that contain outliers for  $\geq 3$ , 2, 1 and 0 types of geometric quality criteria respectively. A grey segment represents the fraction of residues that are not modelled. The numeric value for each fraction is indicated below the corresponding segment, with a dot representing fractions  $\leq 5\%$ . The upper red bar (where present) indicates the fraction of residues that have poor fit to the electron density. The numeric value is given above the bar.

Mol	Chain	Length	Quality of chain
1	A	350	
1	B	350	

## 2 Entry composition [i](#)

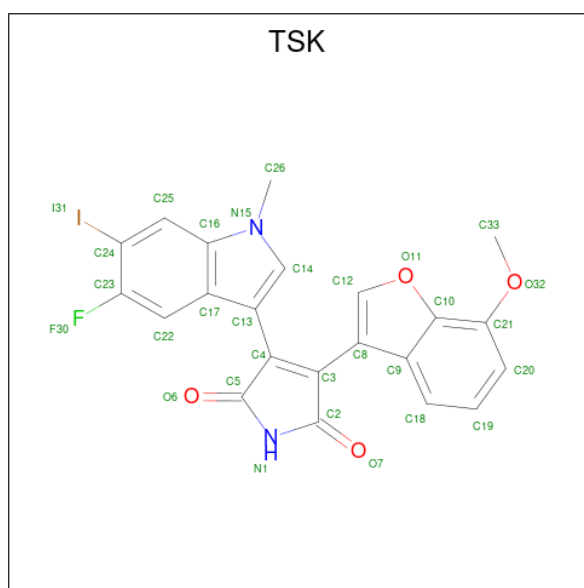
There are 4 unique types of molecules in this entry. The entry contains 5966 atoms, of which 0 are hydrogens and 0 are deuteriums.

In the tables below, the ZeroOcc column contains the number of atoms modelled with zero occupancy, the AltConf column contains the number of residues with at least one atom in alternate conformation and the Trace column contains the number of residues modelled with at most 2 atoms.

- Molecule 1 is a protein called Glycogen synthase kinase-3 beta.

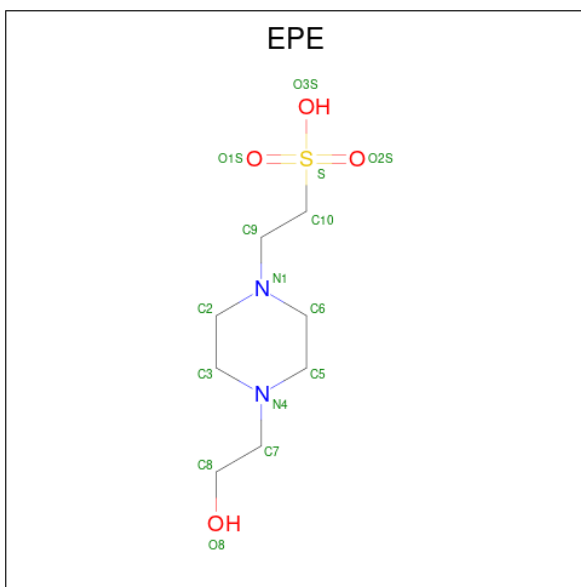
Mol	Chain	Residues	Atoms					ZeroOcc	AltConf	Trace
1	A	350	Total	C	N	O	S	0	0	0
			2804	1804	481	508	11			
1	B	349	Total	C	N	O	S	0	0	0
			2788	1793	479	505	11			

- Molecule 2 is 3-(5-fluoro-6-iodo-1-methyl-1H-indol-3-yl)-4-(7-methoxy-1-benzofuran-3-yl)-1H-pyrrole-2,5-dione (three-letter code: TSK) (formula: C<sub>22</sub>H<sub>14</sub>FIN<sub>2</sub>O<sub>4</sub>).



Mol	Chain	Residues	Atoms						ZeroOcc	AltConf
2	A	1	Total	C	F	I	N	O	0	0
			30	22	1	1	2	4		
2	B	1	Total	C	F	I	N	O	0	0
			30	22	1	1	2	4		

- Molecule 3 is 4-(2-HYDROXYETHYL)-1-PIPERAZINE ETHANESULFONIC ACID (three-letter code: EPE) (formula: C<sub>8</sub>H<sub>18</sub>N<sub>2</sub>O<sub>4</sub>S).



Mol	Chain	Residues	Atoms					ZeroOcc	AltConf
3	A	1	Total	C	N	O	S	0	0
			15	8	2	4	1		
3	B	1	Total	C	N	O	S	0	0
			15	8	2	4	1		

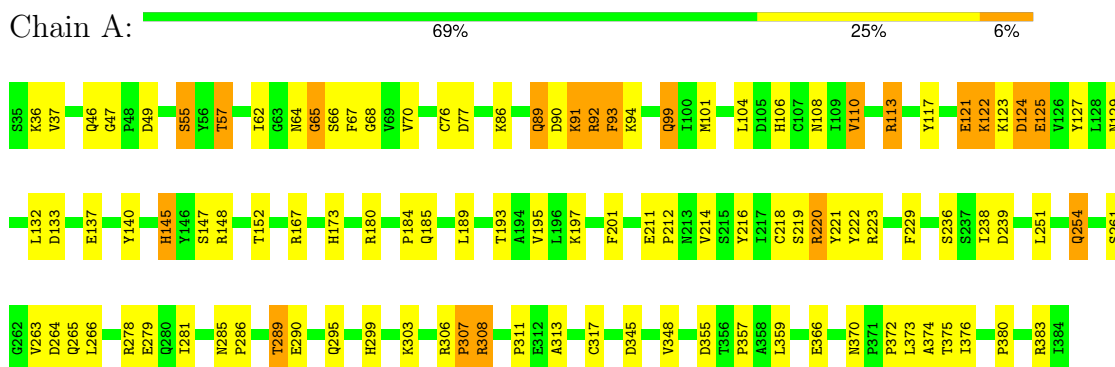
- Molecule 4 is water.

Mol	Chain	Residues	Atoms		ZeroOcc	AltConf
4	A	152	Total	O	0	0
			152	152		
4	B	132	Total	O	0	0
			132	132		

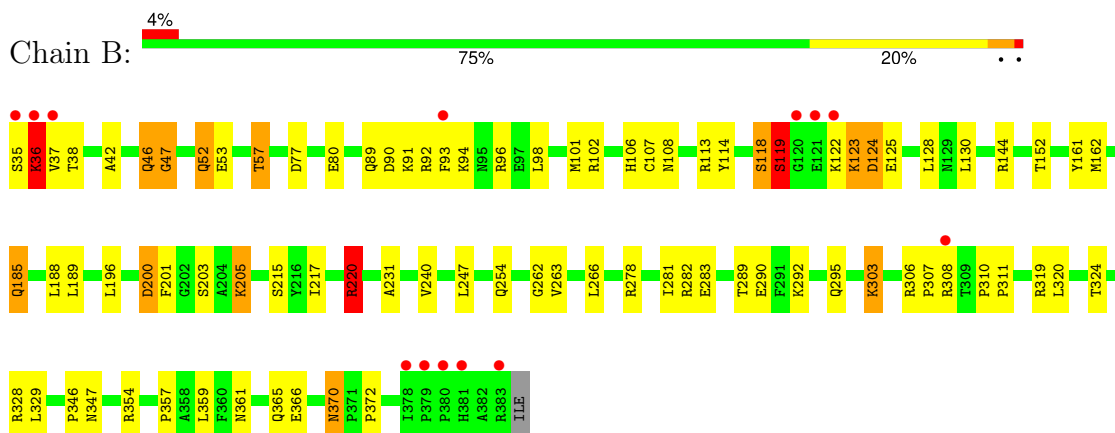
### 3 Residue-property plots [i](#)

These plots are drawn for all protein, RNA, DNA and oligosaccharide chains in the entry. The first graphic for a chain summarises the proportions of the various outlier classes displayed in the second graphic. The second graphic shows the sequence view annotated by issues in geometry and electron density. Residues are color-coded according to the number of geometric quality criteria for which they contain at least one outlier: green = 0, yellow = 1, orange = 2 and red = 3 or more. A red dot above a residue indicates a poor fit to the electron density ( $RSRZ > 2$ ). Stretches of 2 or more consecutive residues without any outlier are shown as a green connector. Residues present in the sample, but not in the model, are shown in grey.

- Molecule 1: Glycogen synthase kinase-3 beta



- Molecule 1: Glycogen synthase kinase-3 beta



## 4 Data and refinement statistics

Property	Value	Source
Space group	P 2 <sub>1</sub> 2 <sub>1</sub> 2 <sub>1</sub>	Depositor
Cell constants a, b, c, $\alpha$ , $\beta$ , $\gamma$	88.50Å 96.01Å 124.25Å 90.00° 90.00° 90.00°	Depositor
Resolution (Å)	44.95 – 2.70 48.01 – 2.70	Depositor EDS
% Data completeness (in resolution range)	97.4 (44.95-2.70) 97.3 (48.01-2.70)	Depositor EDS
$R_{merge}$	(Not available)	Depositor
$R_{sym}$	(Not available)	Depositor
$\langle I/\sigma(I) \rangle$ <sup>1</sup>	2.29 (at 2.69Å)	Xtriage
Refinement program	REFMAC 5.2.0019	Depositor
R, $R_{free}$	0.179 , 0.254 0.174 , 0.237	Depositor DCC
$R_{free}$ test set	1473 reflections (5.08%)	wwPDB-VP
Wilson B-factor (Å <sup>2</sup> )	51.8	Xtriage
Anisotropy	0.689	Xtriage
Bulk solvent $k_{sol}$ (e/Å <sup>3</sup> ), $B_{sol}$ (Å <sup>2</sup> )	0.33 , 48.5	EDS
L-test for twinning <sup>2</sup>	$\langle  L  \rangle = 0.49$ , $\langle L^2 \rangle = 0.32$	Xtriage
Estimated twinning fraction	No twinning to report.	Xtriage
$F_o, F_c$ correlation	0.96	EDS
Total number of atoms	5966	wwPDB-VP
Average B, all atoms (Å <sup>2</sup> )	57.0	wwPDB-VP

Xtriage's analysis on translational NCS is as follows: *The largest off-origin peak in the Patterson function is 4.68% of the height of the origin peak. No significant pseudotranslation is detected.*

<sup>1</sup>Intensities estimated from amplitudes.

<sup>2</sup>Theoretical values of  $\langle |L| \rangle$ ,  $\langle L^2 \rangle$  for acentric reflections are 0.5, 0.333 respectively for untwinned datasets, and 0.375, 0.2 for perfectly twinned datasets.

## 5 Model quality

### 5.1 Standard geometry

Bond lengths and bond angles in the following residue types are not validated in this section: EPE, TSK

The Z score for a bond length (or angle) is the number of standard deviations the observed value is removed from the expected value. A bond length (or angle) with  $|Z| > 5$  is considered an outlier worth inspection. RMSZ is the root-mean-square of all Z scores of the bond lengths (or angles).

Mol	Chain	Bond lengths		Bond angles	
		RMSZ	$\# Z  > 5$	RMSZ	$\# Z  > 5$
1	A	0.73	2/2875 (0.1%)	0.80	3/3911 (0.1%)
1	B	0.69	0/2859	0.75	0/3891
All	All	0.71	2/5734 (0.0%)	0.78	3/7802 (0.0%)

Chiral center outliers are detected by calculating the chiral volume of a chiral center and verifying if the center is modelled as a planar moiety or with the opposite hand. A planarity outlier is detected by checking planarity of atoms in a peptide group, atoms in a mainchain group or atoms of a sidechain that are expected to be planar.

Mol	Chain	#Chirality outliers	#Planarity outliers
1	B	0	1

All (2) bond length outliers are listed below:

Mol	Chain	Res	Type	Atoms	Z	Observed(Å)	Ideal(Å)
1	A	279	GLU	CG-CD	7.30	1.62	1.51
1	A	317	CYS	CB-SG	-5.83	1.72	1.81

All (3) bond angle outliers are listed below:

Mol	Chain	Res	Type	Atoms	Z	Observed(°)	Ideal(°)
1	A	223	ARG	NE-CZ-NH2	-5.78	117.41	120.30
1	A	223	ARG	NE-CZ-NH1	5.45	123.03	120.30
1	A	133	ASP	CB-CG-OD2	-5.03	113.77	118.30

There are no chirality outliers.

All (1) planarity outliers are listed below:

Mol	Chain	Res	Type	Group
1	B	118	SER	Peptide

## 5.2 Too-close contacts ⓘ

In the following table, the Non-H and H(model) columns list the number of non-hydrogen atoms and hydrogen atoms in the chain respectively. The H(added) column lists the number of hydrogen atoms added and optimized by MolProbity. The Clashes column lists the number of clashes within the asymmetric unit, whereas Symm-Clashes lists symmetry-related clashes.

Mol	Chain	Non-H	H(model)	H(added)	Clashes	Symm-Clashes
1	A	2804	0	2833	81	0
1	B	2788	0	2807	66	0
2	A	30	0	14	2	0
2	B	30	0	14	2	0
3	A	15	0	18	5	0
3	B	15	0	18	5	0
4	A	152	0	0	21	0
4	B	132	0	0	19	0
All	All	5966	0	5704	148	0

The all-atom clashscore is defined as the number of clashes found per 1000 atoms (including hydrogen atoms). The all-atom clashscore for this structure is 13.

All (148) close contacts within the same asymmetric unit are listed below, sorted by their clash magnitude.

Atom-1	Atom-2	Interatomic distance (Å)	Clash overlap (Å)
1:A:278:ARG:HB2	4:A:494:HOH:O	1.50	1.09
1:A:106:HIS:CD2	1:A:108:ASN:H	1.86	0.93
1:A:123:LYS:HB2	4:A:11:HOH:O	1.66	0.92
1:A:106:HIS:HD2	1:A:108:ASN:H	0.97	0.91
1:A:94:LYS:HB3	1:A:99:GLN:HE21	1.36	0.91
1:A:220:ARG:HD2	1:B:220:ARG:HD2	1.54	0.87
1:B:144:ARG:HD2	4:B:403:HOH:O	1.74	0.86
1:B:346:PRO:HD3	4:B:462:HOH:O	1.75	0.84
1:A:220:ARG:HD2	1:B:220:ARG:CD	2.08	0.84
1:B:303:LYS:HB2	4:B:386:HOH:O	1.78	0.83
1:A:123:LYS:HA	1:A:124:ASP:C	2.00	0.82
1:B:36:LYS:O	1:B:57:THR:HG22	1.80	0.80
1:A:93:PHE:CZ	1:B:292:LYS:HD3	2.17	0.78
1:A:106:HIS:HD2	1:A:108:ASN:N	1.81	0.74
3:B:401:EPE:H81	3:B:401:EPE:H101	1.70	0.73

*Continued on next page...*



*Continued from previous page...*

Atom-1	Atom-2	Interatomic distance (Å)	Clash overlap (Å)
1:A:345:ASP:O	1:A:348:VAL:HG12	1.89	0.72
1:A:216:TYR:HB2	1:B:262:GLY:HA3	1.73	0.71
1:A:94:LYS:HB3	1:A:99:GLN:NE2	2.07	0.69
1:B:98:LEU:O	1:B:102:ARG:HG3	1.93	0.68
1:A:383:ARG:HD3	4:A:421:HOH:O	1.92	0.68
3:A:401:EPE:H102	3:A:401:EPE:H31	1.74	0.68
1:B:96:ARG:NH1	1:B:205:LYS:HG2	2.09	0.68
1:B:220:ARG:HB3	4:B:459:HOH:O	1.95	0.67
1:A:372:PRO:O	1:A:374:ALA:N	2.28	0.66
1:B:107:CYS:HA	4:B:475:HOH:O	1.95	0.65
1:B:96:ARG:HH11	1:B:205:LYS:HG2	1.62	0.64
1:B:320:LEU:O	1:B:328:ARG:HG2	1.97	0.63
1:B:306:ARG:HB2	1:B:307:PRO:HD2	1.80	0.63
1:A:47:GLY:HA3	4:A:473:HOH:O	1.99	0.63
1:A:375:THR:HG22	4:A:491:HOH:O	1.99	0.62
1:A:113:ARG:HH11	1:A:113:ARG:HG2	1.63	0.62
1:B:106:HIS:HD2	1:B:108:ASN:H	1.49	0.61
1:B:144:ARG:HD2	4:B:4:HOH:O	2.00	0.61
1:B:185:GLN:HE21	1:B:185:GLN:H	1.49	0.61
1:B:106:HIS:CD2	1:B:108:ASN:H	2.19	0.60
1:A:113:ARG:HG2	1:A:113:ARG:NH1	2.16	0.60
1:B:89:GLN:HE21	1:B:90:ASP:N	1.99	0.59
1:A:66:SER:HA	4:B:487:HOH:O	2.01	0.59
1:A:122:LYS:HA	1:A:123:LYS:HB3	1.86	0.58
1:A:193:THR:O	1:A:357:PRO:HG3	2.04	0.57
1:A:193:THR:OG1	1:A:195:VAL:HG23	2.06	0.56
1:B:200:ASP:HA	4:B:460:HOH:O	2.04	0.56
1:A:173:HIS:CE1	1:A:236:SER:HB3	2.41	0.56
1:B:283:GLU:HG2	1:B:324:THR:HG23	1.88	0.55
1:B:370:ASN:HD22	1:B:372:PRO:HD2	1.72	0.55
1:A:311:PRO:HD2	4:A:26:HOH:O	2.07	0.55
1:A:123:LYS:H	1:A:125:GLU:HB2	1.72	0.55
1:A:101:MET:HE1	1:A:201:PHE:CD1	2.41	0.55
1:A:306:ARG:HD2	4:A:415:HOH:O	2.07	0.55
1:B:123:LYS:HG3	4:B:485:HOH:O	2.07	0.54
1:A:220:ARG:HD2	1:B:220:ARG:HD3	1.89	0.54
1:A:121:GLU:HB2	4:A:480:HOH:O	2.07	0.54
1:A:137:GLU:HB2	1:A:189:LEU:O	2.09	0.53
1:B:283:GLU:HA	1:B:283:GLU:OE2	2.08	0.52
1:B:118:SER:O	1:B:119:SER:HB2	2.08	0.52
3:B:401:EPE:H51	3:B:401:EPE:H102	1.91	0.52

*Continued on next page...*

*Continued from previous page...*

Atom-1	Atom-2	Interatomic distance (Å)	Clash overlap (Å)
1:A:65:GLY:HA2	1:A:68:GLY:O	2.10	0.51
1:A:86:LYS:HE3	1:A:129:ASN:HD21	1.75	0.51
1:A:147:SER:HA	4:A:517:HOH:O	2.08	0.51
1:B:91:LYS:HB2	4:B:450:HOH:O	2.11	0.51
3:A:401:EPE:H102	3:A:401:EPE:C3	2.37	0.51
1:A:92:ARG:HD2	4:A:515:HOH:O	2.10	0.51
1:A:278:ARG:NH1	1:A:290:GLU:OE2	2.43	0.51
1:B:128:LEU:HD21	1:B:130:LEU:HD21	1.93	0.51
1:B:123:LYS:O	1:B:124:ASP:HB2	2.12	0.50
1:A:214:VAL:HG13	3:A:401:EPE:O2S	2.12	0.50
1:A:307:PRO:O	1:A:308:ARG:HB2	2.11	0.50
1:A:37:VAL:HG22	1:A:57:THR:HG23	1.94	0.50
1:A:380:PRO:HA	1:A:383:ARG:HE	1.77	0.50
1:B:203:SER:HA	3:B:401:EPE:H72	1.94	0.49
1:A:113:ARG:HH11	1:A:113:ARG:CG	2.26	0.49
1:A:67:PHE:HE1	1:A:70:VAL:HG23	1.77	0.49
1:B:46:GLN:O	1:B:47:GLY:O	2.30	0.49
1:A:92:ARG:CZ	1:B:295:GLN:HG3	2.43	0.49
1:A:101:MET:HE2	1:A:104:LEU:HD12	1.95	0.48
1:B:188:LEU:O	1:B:196:LEU:HA	2.13	0.48
1:A:122:LYS:HG3	4:A:498:HOH:O	2.14	0.47
1:B:35:SER:HB2	4:B:388:HOH:O	2.13	0.47
1:A:121:GLU:O	1:A:122:LYS:O	2.31	0.47
1:A:121:GLU:CB	4:A:480:HOH:O	2.60	0.47
1:A:92:ARG:HG3	4:A:412:HOH:O	2.14	0.47
1:B:37:VAL:HA	1:B:57:THR:HG23	1.96	0.47
1:B:80:GLU:OE2	1:B:113:ARG:NH2	2.46	0.47
1:B:354:ARG:HD3	4:B:454:HOH:O	2.14	0.47
4:A:410:HOH:O	1:B:92:ARG:HD3	2.15	0.47
1:A:89:GLN:HE21	1:A:90:ASP:N	2.14	0.46
1:B:240:VAL:HG13	1:B:320:LEU:HD22	1.97	0.46
1:A:64:ASN:HB3	1:A:65:GLY:HA3	1.97	0.46
1:A:286:PRO:O	1:A:289:THR:HG23	2.15	0.46
1:A:295:GLN:HG3	4:A:410:HOH:O	2.16	0.46
1:A:303:LYS:HE2	4:A:394:HOH:O	2.16	0.46
2:B:400:TSK:H22	2:B:400:TSK:C8	2.45	0.46
1:B:365:GLN:HB3	4:B:404:HOH:O	2.14	0.46
1:A:238:ILE:HG13	1:A:239:ASP:N	2.31	0.45
1:A:264:ASP:HB3	4:B:428:HOH:O	2.16	0.45
1:B:203:SER:HA	3:B:401:EPE:C7	2.47	0.45
1:A:180:ARG:NH2	3:A:401:EPE:O1S	2.47	0.45

*Continued on next page...*

*Continued from previous page...*

Atom-1	Atom-2	Interatomic distance (Å)	Clash overlap (Å)
1:A:36:LYS:O	1:A:57:THR:HG22	2.16	0.45
1:B:52:GLN:HE21	1:B:52:GLN:HB2	1.60	0.45
1:A:117:TYR:HA	1:A:127:TYR:O	2.17	0.45
1:A:221:TYR:HB2	1:A:222:TYR:CE2	2.52	0.45
1:A:281:ILE:HG21	1:A:289:THR:HA	2.00	0.45
1:B:185:GLN:H	1:B:185:GLN:NE2	2.14	0.45
1:B:357:PRO:O	1:B:359:LEU:HG	2.17	0.45
3:A:401:EPE:H72	4:A:459:HOH:O	2.16	0.44
1:B:123:LYS:NZ	4:B:483:HOH:O	2.49	0.44
1:B:215:SER:HB3	1:B:231:ALA:O	2.16	0.44
1:A:357:PRO:O	1:A:359:LEU:HG	2.17	0.44
1:B:125:GLU:HG2	4:B:412:HOH:O	2.18	0.44
1:B:217:ILE:H	1:B:217:ILE:HG13	1.64	0.44
3:B:401:EPE:H81	3:B:401:EPE:C10	2.45	0.44
1:B:106:HIS:HE1	1:B:366:GLU:OE2	2.01	0.44
1:B:278:ARG:NH2	1:B:290:GLU:OE2	2.50	0.44
1:A:220:ARG:CD	1:B:220:ARG:HD2	2.38	0.43
1:B:94:LYS:HB2	4:B:497:HOH:O	2.17	0.43
1:B:347:ASN:HB3	4:B:467:HOH:O	2.19	0.43
1:A:251:LEU:HD11	1:A:313:ALA:HB1	2.01	0.43
1:A:220:ARG:CD	1:B:220:ARG:CD	2.88	0.43
1:B:370:ASN:ND2	1:B:372:PRO:HD2	2.32	0.43
1:B:42:ALA:HB1	1:B:114:TYR:HB3	2.01	0.43
1:B:162:MET:HG3	1:B:247:LEU:HD13	2.01	0.43
1:B:101:MET:HE1	1:B:201:PHE:CD1	2.54	0.42
1:B:161:TYR:CE1	1:B:189:LEU:HD22	2.55	0.42
1:A:108:ASN:O	1:A:197:LYS:HA	2.19	0.42
1:A:278:ARG:CZ	4:A:494:HOH:O	2.68	0.42
1:B:319:ARG:HB3	1:B:329:LEU:HG	2.02	0.42
1:A:91:LYS:HE3	4:A:392:HOH:O	2.20	0.42
1:A:92:ARG:HG2	4:A:509:HOH:O	2.20	0.42
1:A:229:PHE:O	1:A:285:ASN:ND2	2.52	0.42
1:B:306:ARG:HB2	1:B:307:PRO:CD	2.49	0.42
1:A:124:ASP:HB3	1:A:125:GLU:H	1.44	0.42
1:A:62:ILE:O	2:A:400:TSK:I31	3.08	0.41
1:A:140:TYR:HB2	1:A:184:PRO:HB2	2.02	0.41
1:B:281:ILE:HG21	1:B:289:THR:HA	2.01	0.41
1:A:211:GLU:HA	1:A:212:PRO:HD2	1.92	0.41
1:A:254:GLN:HE21	1:A:254:GLN:HB3	1.58	0.41
1:B:308:ARG:HA	4:B:408:HOH:O	2.21	0.41
1:A:145:HIS:HD2	4:A:23:HOH:O	2.03	0.41

*Continued on next page...*

*Continued from previous page...*

Atom-1	Atom-2	Interatomic distance (Å)	Clash overlap (Å)
1:A:261:SER:O	1:A:265:GLN:HG3	2.21	0.41
1:A:55:SER:HB2	1:A:76:CYS:HB2	2.03	0.41
1:A:167:ARG:NE	1:A:366:GLU:OE2	2.51	0.41
1:A:110:VAL:HG13	1:A:132:LEU:HD22	2.02	0.40
2:A:400:TSK:H22	2:A:400:TSK:C8	2.50	0.40
1:A:220:ARG:O	1:A:221:TYR:HB2	2.21	0.40
1:A:278:ARG:HH12	1:A:290:GLU:CD	2.25	0.40
1:B:310:PRO:HA	1:B:311:PRO:HD3	1.85	0.40
1:B:361:ASN:OD1	1:B:361:ASN:N	2.54	0.40
2:B:400:TSK:H22	2:B:400:TSK:C9	2.51	0.40

There are no symmetry-related clashes.

## 5.3 Torsion angles

### 5.3.1 Protein backbone

In the following table, the Percentiles column shows the percent Ramachandran outliers of the chain as a percentile score with respect to all X-ray entries followed by that with respect to entries of similar resolution.

The Analysed column shows the number of residues for which the backbone conformation was analysed, and the total number of residues.

Mol	Chain	Analysed	Favoured	Allowed	Outliers	Percentiles	
1	A	348/350 (99%)	322 (92%)	19 (6%)	7 (2%)	7	19
1	B	347/350 (99%)	312 (90%)	27 (8%)	8 (2%)	6	16
All	All	695/700 (99%)	634 (91%)	46 (7%)	15 (2%)	6	17

All (15) Ramachandran outliers are listed below:

Mol	Chain	Res	Type
1	A	122	LYS
1	A	125	GLU
1	A	373	LEU
1	B	77	ASP
1	B	119	SER
1	B	122	LYS
1	B	220	ARG
1	B	47	GLY

*Continued on next page...*

*Continued from previous page...*

Mol	Chain	Res	Type
1	A	65	GLY
1	A	124	ASP
1	B	36	LYS
1	B	124	ASP
1	A	218	CYS
1	B	200	ASP
1	A	307	PRO

### 5.3.2 Protein sidechains ⓘ

In the following table, the Percentiles column shows the percent sidechain outliers of the chain as a percentile score with respect to all X-ray entries followed by that with respect to entries of similar resolution.

The Analysed column shows the number of residues for which the sidechain conformation was analysed, and the total number of residues.

Mol	Chain	Analysed	Rotameric	Outliers	Percentiles	
1	A	312/312 (100%)	284 (91%)	28 (9%)	9	22
1	B	309/312 (99%)	290 (94%)	19 (6%)	18	41
All	All	621/624 (100%)	574 (92%)	47 (8%)	13	30

All (47) residues with a non-rotameric sidechain are listed below:

Mol	Chain	Res	Type
1	A	46	GLN
1	A	49	ASP
1	A	55	SER
1	A	57	THR
1	A	77	ASP
1	A	89	GLN
1	A	91	LYS
1	A	92	ARG
1	A	93	PHE
1	A	99	GLN
1	A	110	VAL
1	A	113	ARG
1	A	121	GLU
1	A	145	HIS
1	A	148	ARG
1	A	152	THR

*Continued on next page...*

*Continued from previous page...*

Mol	Chain	Res	Type
1	A	185	GLN
1	A	219	SER
1	A	220	ARG
1	A	254	GLN
1	A	263	VAL
1	A	266	LEU
1	A	289	THR
1	A	299	HIS
1	A	308	ARG
1	A	355	ASP
1	A	370	ASN
1	A	376	ILE
1	B	36	LYS
1	B	38	THR
1	B	46	GLN
1	B	52	GLN
1	B	53	GLU
1	B	57	THR
1	B	93	PHE
1	B	119	SER
1	B	123	LYS
1	B	152	THR
1	B	185	GLN
1	B	205	LYS
1	B	220	ARG
1	B	254	GLN
1	B	263	VAL
1	B	266	LEU
1	B	282	ARG
1	B	303	LYS
1	B	370	ASN

Sometimes sidechains can be flipped to improve hydrogen bonding and reduce clashes. All (16) such sidechains are listed below:

Mol	Chain	Res	Type
1	A	89	GLN
1	A	99	GLN
1	A	106	HIS
1	A	108	ASN
1	A	129	ASN
1	A	254	GLN
1	A	365	GLN

*Continued on next page...*

*Continued from previous page...*

Mol	Chain	Res	Type
1	A	370	ASN
1	B	52	GLN
1	B	89	GLN
1	B	99	GLN
1	B	106	HIS
1	B	108	ASN
1	B	185	GLN
1	B	254	GLN
1	B	370	ASN

### 5.3.3 RNA ⓘ

There are no RNA molecules in this entry.

## 5.4 Non-standard residues in protein, DNA, RNA chains ⓘ

There are no non-standard protein/DNA/RNA residues in this entry.

## 5.5 Carbohydrates ⓘ

There are no monosaccharides in this entry.

## 5.6 Ligand geometry ⓘ

4 ligands are modelled in this entry.

In the following table, the Counts columns list the number of bonds (or angles) for which Mogul statistics could be retrieved, the number of bonds (or angles) that are observed in the model and the number of bonds (or angles) that are defined in the Chemical Component Dictionary. The Link column lists molecule types, if any, to which the group is linked. The Z score for a bond length (or angle) is the number of standard deviations the observed value is removed from the expected value. A bond length (or angle) with  $|Z| > 2$  is considered an outlier worth inspection. RMSZ is the root-mean-square of all Z scores of the bond lengths (or angles).

Mol	Type	Chain	Res	Link	Bond lengths			Bond angles		
					Counts	RMSZ	# $ Z  > 2$	Counts	RMSZ	# $ Z  > 2$
3	EPE	B	401	-	15,15,15	1.52	1 (6%)	19,20,20	2.13	7 (36%)
2	TSK	B	400	-	29,34,34	2.15	7 (24%)	31,52,52	3.99	15 (48%)
3	EPE	A	401	-	15,15,15	1.05	1 (6%)	19,20,20	2.28	8 (42%)
2	TSK	A	400	-	29,34,34	2.33	8 (27%)	31,52,52	4.18	13 (41%)

In the following table, the Chirals column lists the number of chiral outliers, the number of chiral centers analysed, the number of these observed in the model and the number defined in the Chemical Component Dictionary. Similar counts are reported in the Torsion and Rings columns. '-' means no outliers of that kind were identified.

Mol	Type	Chain	Res	Link	Chirals	Torsions	Rings
3	EPE	B	401	-	-	4/9/19/19	0/1/1/1
2	TSK	B	400	-	-	2/4/26/26	0/5/5/5
3	EPE	A	401	-	-	5/9/19/19	0/1/1/1
2	TSK	A	400	-	-	2/4/26/26	0/5/5/5

All (17) bond length outliers are listed below:

Mol	Chain	Res	Type	Atoms	Z	Observed(Å)	Ideal(Å)
2	A	400	TSK	C8-C9	9.00	1.50	1.42
2	B	400	TSK	C8-C9	7.37	1.48	1.42
3	B	401	EPE	C10-S	4.81	1.84	1.77
2	B	400	TSK	C4-C3	4.46	1.48	1.37
2	A	400	TSK	C4-C3	4.16	1.47	1.37
3	A	401	EPE	C10-S	3.23	1.82	1.77
2	B	400	TSK	C9-C10	-2.80	1.37	1.43
2	B	400	TSK	C22-C17	-2.66	1.36	1.42
2	A	400	TSK	C9-C10	-2.62	1.37	1.43
2	B	400	TSK	C14-N15	-2.59	1.34	1.38
2	A	400	TSK	C13-C17	2.48	1.44	1.42
2	A	400	TSK	C14-N15	-2.43	1.34	1.38
2	A	400	TSK	O7-C2	2.43	1.28	1.23
2	B	400	TSK	C13-C17	2.39	1.44	1.42
2	B	400	TSK	O6-C5	2.34	1.28	1.23
2	A	400	TSK	C22-C17	-2.14	1.37	1.42
2	A	400	TSK	C25-C16	-2.04	1.36	1.40

All (43) bond angle outliers are listed below:

Mol	Chain	Res	Type	Atoms	Z	Observed(°)	Ideal(°)
2	A	400	TSK	C3-C2-N1	13.19	114.54	106.64
2	A	400	TSK	C4-C5-N1	12.81	114.32	106.64
2	B	400	TSK	C4-C5-N1	11.99	113.83	106.64
2	B	400	TSK	C3-C2-N1	11.30	113.41	106.64
2	A	400	TSK	C5-N1-C2	-6.29	104.68	111.36
2	B	400	TSK	C22-C23-C24	-6.14	119.09	123.06
2	A	400	TSK	C22-C23-C24	-5.98	119.19	123.06
2	B	400	TSK	C8-C9-C10	-5.40	101.44	107.71
3	A	401	EPE	C5-N4-C3	5.29	120.24	108.84

*Continued on next page...*



*Continued from previous page...*

Mol	Chain	Res	Type	Atoms	Z	Observed(°)	Ideal(°)
2	B	400	TSK	C5-N1-C2	-5.27	105.76	111.36
2	A	400	TSK	C22-C17-C16	5.18	125.85	119.65
2	B	400	TSK	F30-C23-C24	5.02	122.25	118.41
2	A	400	TSK	C8-C9-C10	-4.60	102.37	107.71
3	B	401	EPE	C5-N4-C3	4.49	118.52	108.84
2	B	400	TSK	C22-C17-C16	4.43	124.95	119.65
2	B	400	TSK	C33-O32-C21	3.93	124.22	117.67
3	B	401	EPE	C7-N4-C3	3.88	121.57	111.24
3	A	401	EPE	C6-C5-N4	3.79	118.28	110.65
3	A	401	EPE	O2S-S-C10	3.76	112.40	106.73
2	B	400	TSK	C19-C18-C9	-3.72	115.88	120.91
2	A	400	TSK	O6-C5-C4	-3.54	121.71	128.25
2	A	400	TSK	C33-O32-C21	3.32	123.20	117.67
2	A	400	TSK	C23-C22-C17	-3.24	116.11	119.54
2	B	400	TSK	O6-C5-C4	-3.22	122.31	128.25
2	B	400	TSK	O7-C2-C3	-3.20	122.33	128.25
3	A	401	EPE	C7-N4-C5	3.20	119.75	111.24
2	A	400	TSK	O7-C2-C3	-2.95	122.79	128.25
3	B	401	EPE	O3S-S-C10	2.89	111.65	106.00
2	B	400	TSK	O32-C21-C10	2.84	117.77	115.06
3	B	401	EPE	C7-N4-C5	2.82	118.76	111.24
2	A	400	TSK	C23-C24-I31	-2.79	118.17	120.72
3	B	401	EPE	O3S-S-O2S	-2.74	104.54	111.40
3	B	401	EPE	O1S-S-C10	2.63	110.71	106.73
2	B	400	TSK	C23-C22-C17	-2.63	116.75	119.54
3	A	401	EPE	O2S-S-O1S	-2.60	105.36	113.82
3	A	401	EPE	O3S-S-C10	2.38	110.65	106.00
2	A	400	TSK	O32-C21-C10	2.21	117.17	115.06
2	B	400	TSK	C12-C8-C9	2.20	114.14	108.63
3	A	401	EPE	C5-C6-N1	2.17	115.03	110.65
2	A	400	TSK	C25-C16-C17	-2.13	117.69	120.92
3	A	401	EPE	C7-N4-C3	2.10	116.85	111.24
3	B	401	EPE	C2-C3-N4	2.08	114.84	110.65
2	B	400	TSK	C20-C21-C10	-2.07	117.00	120.10

There are no chirality outliers.

All (13) torsion outliers are listed below:

Mol	Chain	Res	Type	Atoms
2	A	400	TSK	C4-C3-C8-C9
2	A	400	TSK	C17-C13-C4-C3
2	B	400	TSK	C17-C13-C4-C3

*Continued on next page...*

*Continued from previous page...*

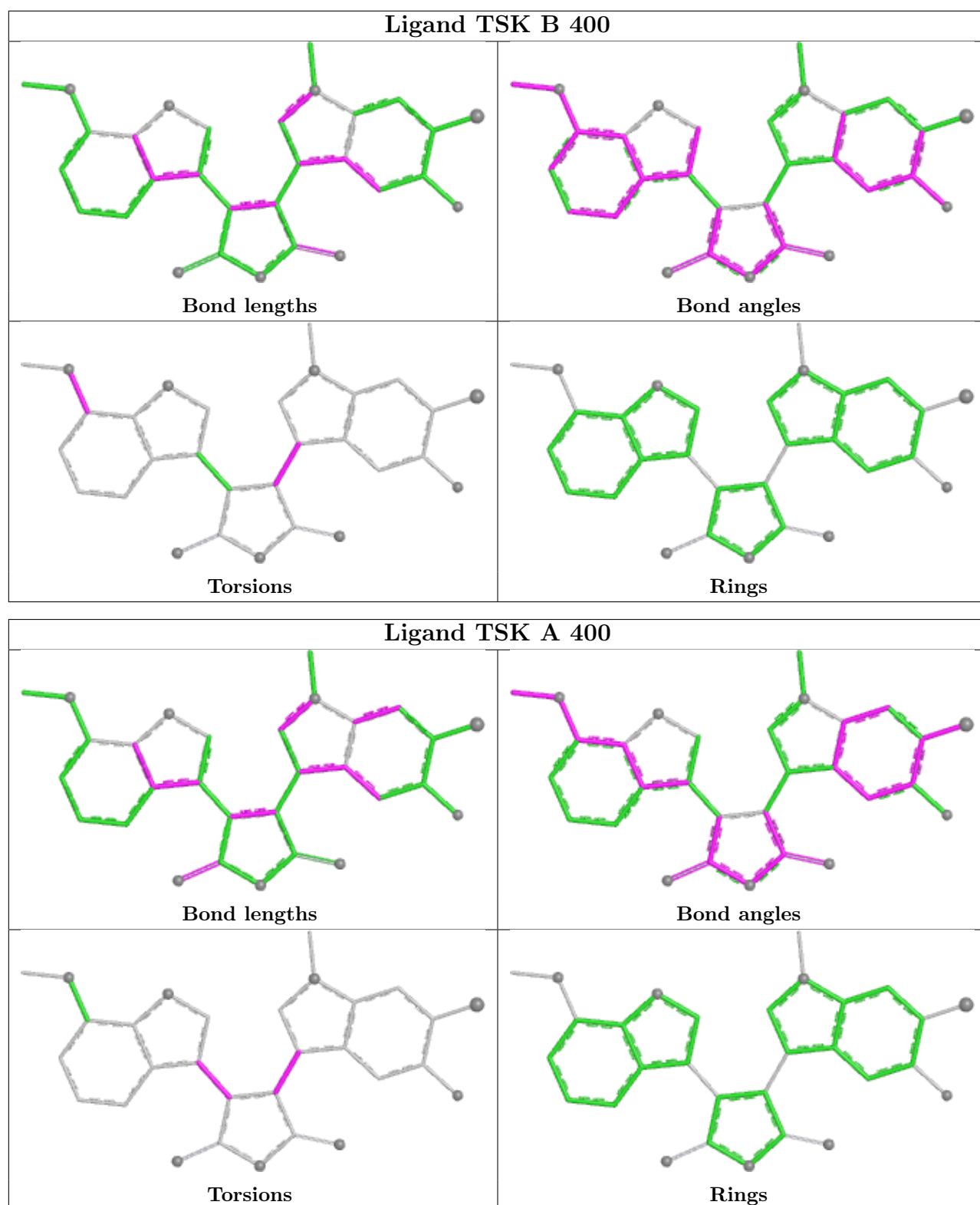
Mol	Chain	Res	Type	Atoms
3	A	401	EPE	C10-C9-N1-C2
3	A	401	EPE	C8-C7-N4-C3
3	A	401	EPE	C9-C10-S-O2S
3	A	401	EPE	C9-C10-S-O3S
3	B	401	EPE	C10-C9-N1-C6
3	B	401	EPE	C10-C9-N1-C2
3	B	401	EPE	N4-C7-C8-O8
3	A	401	EPE	C9-C10-S-O1S
3	B	401	EPE	S-C10-C9-N1
2	B	400	TSK	C10-C21-O32-C33

There are no ring outliers.

4 monomers are involved in 14 short contacts:

Mol	Chain	Res	Type	Clashes	Symm-Clashes
3	B	401	EPE	5	0
2	B	400	TSK	2	0
3	A	401	EPE	5	0
2	A	400	TSK	2	0

The following is a two-dimensional graphical depiction of Mogul quality analysis of bond lengths, bond angles, torsion angles, and ring geometry for all instances of the Ligand of Interest. In addition, ligands with molecular weight > 250 and outliers as shown on the validation Tables will also be included. For torsion angles, if less than 5% of the Mogul distribution of torsion angles is within 10 degrees of the torsion angle in question, then that torsion angle is considered an outlier. Any bond that is central to one or more torsion angles identified as an outlier by Mogul will be highlighted in the graph. For rings, the root-mean-square deviation (RMSD) between the ring in question and similar rings identified by Mogul is calculated over all ring torsion angles. If the average RMSD is greater than 60 degrees and the minimal RMSD between the ring in question and any Mogul-identified rings is also greater than 60 degrees, then that ring is considered an outlier. The outliers are highlighted in purple. The color gray indicates Mogul did not find sufficient equivalents in the CSD to analyse the geometry.



## 5.7 Other polymers ⓘ

There are no such residues in this entry.

## 5.8 Polymer linkage issues ⓘ

There are no chain breaks in this entry.

## 6 Fit of model and data [i](#)

### 6.1 Protein, DNA and RNA chains [i](#)

In the following table, the column labelled ‘#RSRZ > 2’ contains the number (and percentage) of RSRZ outliers, followed by percent RSRZ outliers for the chain as percentile scores relative to all X-ray entries and entries of similar resolution. The OWAB column contains the minimum, median, 95<sup>th</sup> percentile and maximum values of the occupancy-weighted average B-factor per residue. The column labelled ‘Q < 0.9’ lists the number of (and percentage) of residues with an average occupancy less than 0.9.

Mol	Chain	Analysed	<RSRZ>	#RSRZ > 2			OWAB(Å <sup>2</sup> )	Q < 0.9
1	A	350/350 (100%)	-0.24	0	100	100	29, 50, 85, 129	2 (0%)
1	B	349/350 (99%)	0.03	13 (3%)	41	41	33, 55, 94, 134	3 (0%)
All	All	699/700 (99%)	-0.11	13 (1%)	66	69	29, 52, 90, 134	5 (0%)

All (13) RSRZ outliers are listed below:

Mol	Chain	Res	Type	RSRZ
1	B	120	GLY	7.8
1	B	35	SER	5.6
1	B	122	LYS	5.6
1	B	121	GLU	4.9
1	B	383	ARG	3.2
1	B	378	ILE	3.0
1	B	308	ARG	2.9
1	B	379	PRO	2.7
1	B	37	VAL	2.5
1	B	380	PRO	2.5
1	B	93	PHE	2.4
1	B	36	LYS	2.4
1	B	381	HIS	2.1

### 6.2 Non-standard residues in protein, DNA, RNA chains [i](#)

There are no non-standard protein/DNA/RNA residues in this entry.

### 6.3 Carbohydrates [i](#)

There are no monosaccharides in this entry.

## 6.4 Ligands

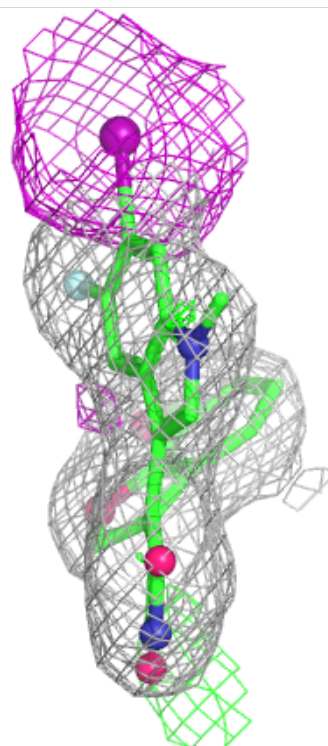
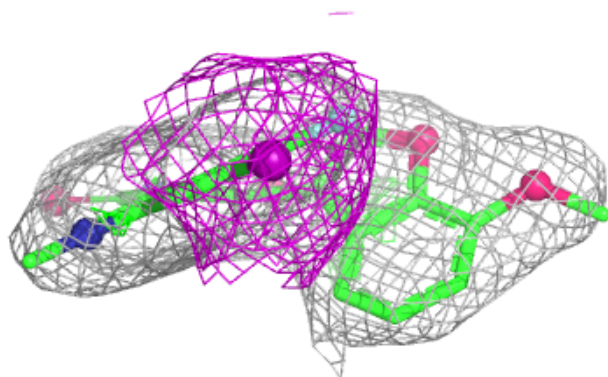
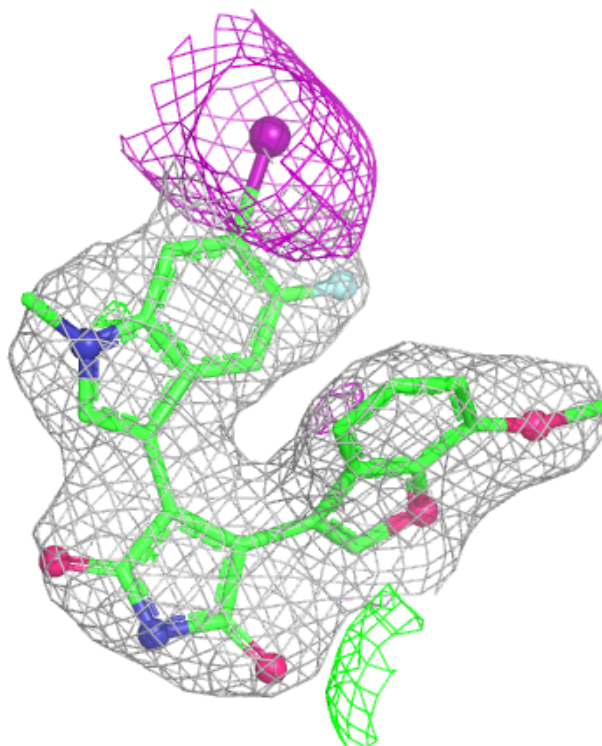
In the following table, the Atoms column lists the number of modelled atoms in the group and the number defined in the chemical component dictionary. The B-factors column lists the minimum, median, 95<sup>th</sup> percentile and maximum values of B factors of atoms in the group. The column labelled 'Q< 0.9' lists the number of atoms with occupancy less than 0.9.

Mol	Type	Chain	Res	Atoms	RSCC	RSR	B-factors(Å <sup>2</sup> )	Q<0.9
3	EPE	B	401	15/15	0.85	0.26	73,81,84,84	0
3	EPE	A	401	15/15	0.87	0.29	77,79,80,80	0
2	TSK	B	400	30/30	0.91	0.19	70,76,86,94	0
2	TSK	A	400	30/30	0.92	0.14	54,64,79,89	0

The following is a graphical depiction of the model fit to experimental electron density of all instances of the Ligand of Interest. In addition, ligands with molecular weight > 250 and outliers as shown on the geometry validation Tables will also be included. Each fit is shown from different orientation to approximate a three-dimensional view.

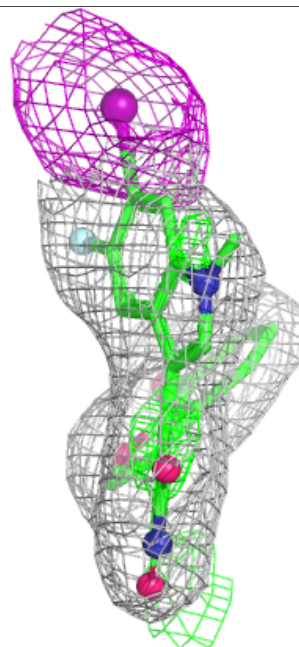
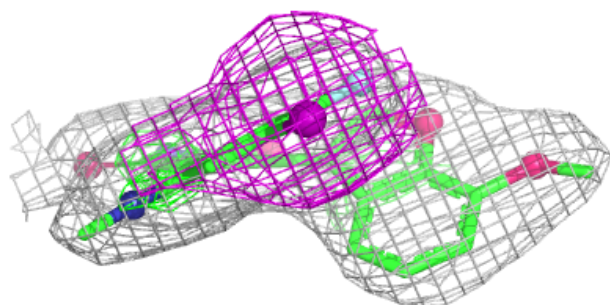
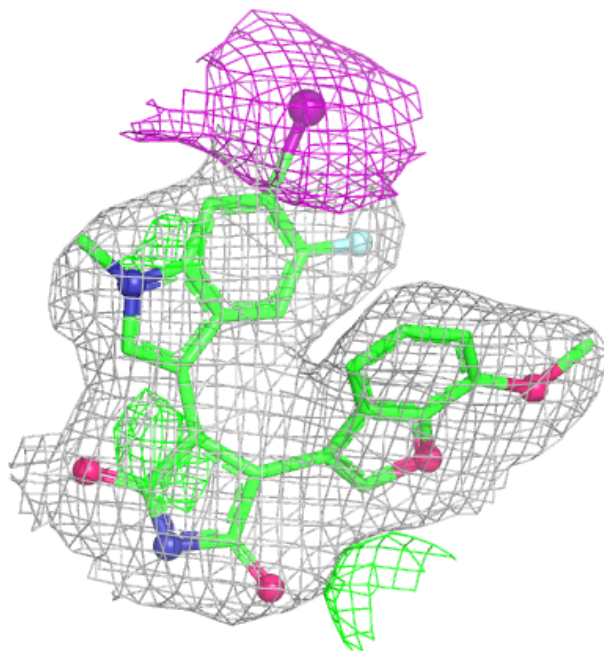
**Electron density around TSK B 400:**

$2mF_o-DF_c$  (at 0.7 rmsd) in gray  
 $mF_o-DF_c$  (at 3 rmsd) in purple (negative)  
and green (positive)



**Electron density around TSK A 400:**

$2mF_o-DF_c$  (at 0.7 rmsd) in gray  
 $mF_o-DF_c$  (at 3 rmsd) in purple (negative)  
and green (positive)



## 6.5 Other polymers [i](#)

There are no such residues in this entry.