



# Full wwPDB X-ray Structure Validation Report ⓘ

Nov 3, 2024 – 01:13 PM EST

PDB ID : 1SAZ  
Title : Membership in the ASKHA Superfamily: Enzymological Properties and Crystal Structure of Butyrate Kinase 2 from *Thermotoga maritima*  
Authors : Diao, J.; Cooper, D.R.; Sanders, D.A.; Hasson, M.S.  
Deposited on : 2004-02-09  
Resolution : 2.50 Å(reported)

This is a Full wwPDB X-ray Structure Validation Report for a publicly released PDB entry.

We welcome your comments at [validation@mail.wwpdb.org](mailto:validation@mail.wwpdb.org)

A user guide is available at

<https://www.wwpdb.org/validation/2017/XrayValidationReportHelp>

with specific help available everywhere you see the ⓘ symbol.

The types of validation reports are described at

<http://www.wwpdb.org/validation/2017/FAQs#types>.

---

The following versions of software and data (see [references ⓘ](#)) were used in the production of this report:

MolProbity	:	4.02b-467
Mogul	:	2022.3.0, CSD as543be (2022)
Xtriage (Phenix)	:	1.20.1
EDS	:	3.0
buster-report	:	1.1.7 (2018)
Percentile statistics	:	20231227.v01 (using entries in the PDB archive December 27th 2023)
CCP4	:	9.0.003 (Gargrove)
Density-Fitness	:	1.0.11
Ideal geometry (proteins)	:	Engh & Huber (2001)
Ideal geometry (DNA, RNA)	:	Parkinson et al. (1996)
Validation Pipeline (wwPDB-VP)	:	2.39

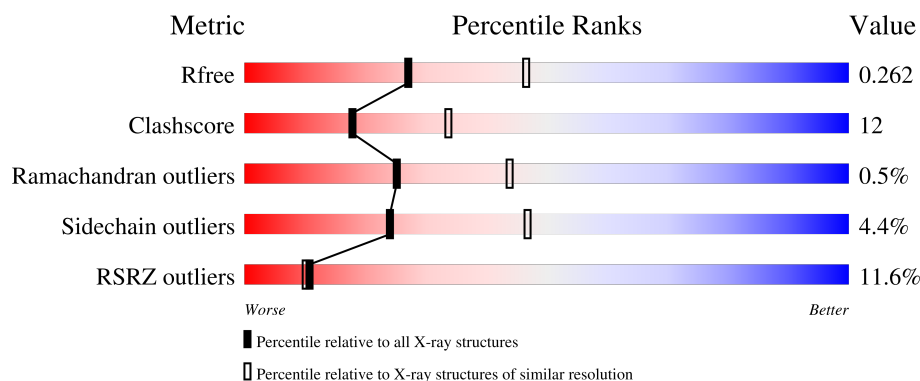
# 1 Overall quality at a glance

The following experimental techniques were used to determine the structure:

*X-RAY DIFFRACTION*

The reported resolution of this entry is 2.50 Å.

Percentile scores (ranging between 0-100) for global validation metrics of the entry are shown in the following graphic. The table shows the number of entries on which the scores are based.



Metric	Whole archive (#Entries)	Similar resolution (#Entries, resolution range(Å))
$R_{free}$	164625	5504 (2.50-2.50)
Clashscore	180529	6282 (2.50-2.50)
Ramachandran outliers	177936	6191 (2.50-2.50)
Sidechain outliers	177891	6193 (2.50-2.50)
RSRZ outliers	164620	5504 (2.50-2.50)

The table below summarises the geometric issues observed across the polymeric chains and their fit to the electron density. The red, orange, yellow and green segments of the lower bar indicate the fraction of residues that contain outliers for  $\geq 3$ , 2, 1 and 0 types of geometric quality criteria respectively. A grey segment represents the fraction of residues that are not modelled. The numeric value for each fraction is indicated below the corresponding segment, with a dot representing fractions  $\leq 5\%$ . The upper red bar (where present) indicates the fraction of residues that have poor fit to the electron density. The numeric value is given above the bar.

Mol	Chain	Length	Quality of chain
1	A	381	

The following table lists non-polymeric compounds, carbohydrate monomers and non-standard residues in protein, DNA, RNA chains that are outliers for geometric or electron-density-fit criteria:

Mol	Type	Chain	Res	Chirality	Geometry	Clashes	Electron density
4	FMT	A	401	-	X	-	-

*Continued on next page...*

*Continued from previous page...*

Mol	Type	Chain	Res	Chirality	Geometry	Clashes	Electron density
4	FMT	A	402	-	X	-	-
4	FMT	A	403	-	X	-	-
4	FMT	A	404	-	X	X	-

## 2 Entry composition

There are 5 unique types of molecules in this entry. The entry contains 3065 atoms, of which 0 are hydrogens and 0 are deuteriums.

In the tables below, the ZeroOcc column contains the number of atoms modelled with zero occupancy, the AltConf column contains the number of residues with at least one atom in alternate conformation and the Trace column contains the number of residues modelled with at most 2 atoms.

- Molecule 1 is a protein called Probable butyrate kinase 2.

Mol	Chain	Residues	Atoms						ZeroOcc	AltConf	Trace
			Total	C	N	O	S	Se			
1	A	375	2958	1878	526	541	1	12	0	0	0

There are 18 discrepancies between the modelled and reference sequences:

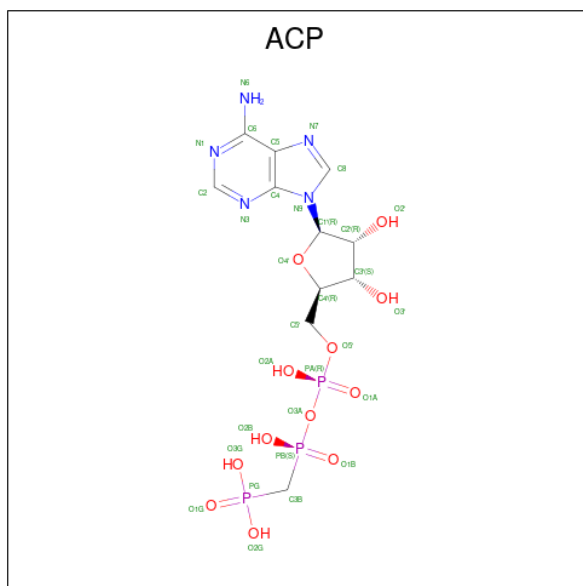
Chain	Residue	Modelled	Actual	Comment	Reference
A	1	MSE	MET	modified residue	UNP Q9X278
A	24	MSE	MET	modified residue	UNP Q9X278
A	27	MSE	MET	modified residue	UNP Q9X278
A	92	MSE	MET	modified residue	UNP Q9X278
A	135	MSE	MET	modified residue	UNP Q9X278
A	168	MSE	MET	modified residue	UNP Q9X278
A	169	MSE	MET	modified residue	UNP Q9X278
A	176	MSE	MET	modified residue	UNP Q9X278
A	183	MSE	MET	modified residue	UNP Q9X278
A	237	MSE	MET	modified residue	UNP Q9X278
A	277	MSE	MET	modified residue	UNP Q9X278
A	288	MSE	MET	modified residue	UNP Q9X278
A	376	HIS	-	expression tag	UNP Q9X278
A	377	HIS	-	expression tag	UNP Q9X278
A	378	HIS	-	expression tag	UNP Q9X278
A	379	HIS	-	expression tag	UNP Q9X278
A	380	HIS	-	expression tag	UNP Q9X278
A	381	HIS	-	expression tag	UNP Q9X278

- Molecule 2 is SODIUM ION (three-letter code: NA) (formula: Na).

Mol	Chain	Residues	Atoms		ZeroOcc	AltConf
2	A	1	Total	Na	0	0
			1	1		

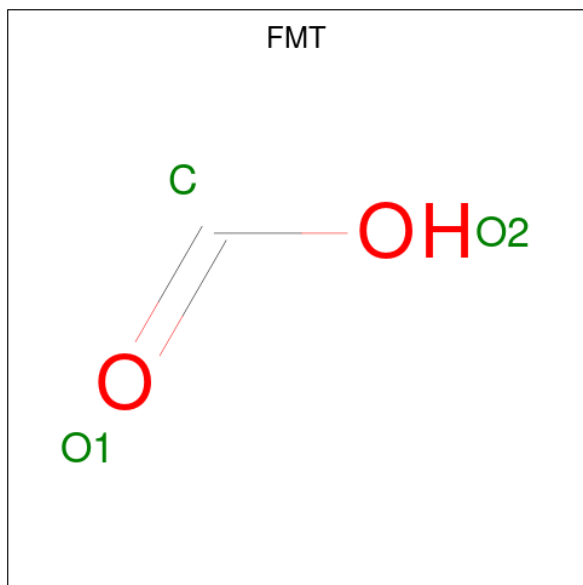
- Molecule 3 is PHOSPHOMETHYLPHOSPHONIC ACID ADENYLATE ESTER (three-

letter code: ACP) (formula:  $\text{C}_{11}\text{H}_{18}\text{N}_5\text{O}_{12}\text{P}_3$ ).



Mol	Chain	Residues	Atoms					ZeroOcc	AltConf
3	A	1	Total 31	C 11	N 5	O 12	P 3	0	0

- Molecule 4 is FORMIC ACID (three-letter code: FMT) (formula:  $\text{CH}_2\text{O}_2$ ).



Mol	Chain	Residues	Atoms	ZeroOcc	AltConf
4	A	1	Total C O 3 1 2	0	0
4	A	1	Total C O 3 1 2	0	0

*Continued on next page...*

*Continued from previous page...*

Mol	Chain	Residues	Atoms			ZeroOcc	AltConf
4	A	1	Total	C	O	0	0
			3	1	2		
4	A	1	Total	C	O	0	0
			3	1	2		

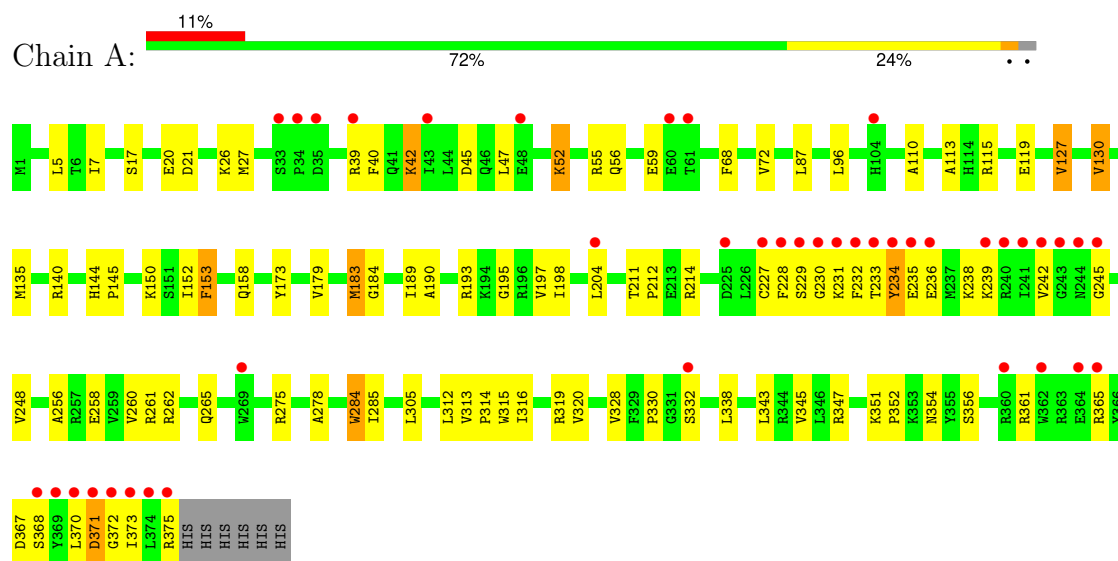
- Molecule 5 is water.

Mol	Chain	Residues	Atoms		ZeroOcc	AltConf
5	A	63	Total	O	0	0
			63	63		

### 3 Residue-property plots [i](#)

These plots are drawn for all protein, RNA, DNA and oligosaccharide chains in the entry. The first graphic for a chain summarises the proportions of the various outlier classes displayed in the second graphic. The second graphic shows the sequence view annotated by issues in geometry and electron density. Residues are color-coded according to the number of geometric quality criteria for which they contain at least one outlier: green = 0, yellow = 1, orange = 2 and red = 3 or more. A red dot above a residue indicates a poor fit to the electron density ( $RSRZ > 2$ ). Stretches of 2 or more consecutive residues without any outlier are shown as a green connector. Residues present in the sample, but not in the model, are shown in grey.

- Molecule 1: Probable butyrate kinase 2



## 4 Data and refinement statistics

Property	Value	Source
Space group	I 4 2 2	Depositor
Cell constants a, b, c, $\alpha$ , $\beta$ , $\gamma$	197.69Å 197.69Å 58.24Å 90.00° 90.00° 90.00°	Depositor
Resolution (Å)	43.64 – 2.50 43.64 – 2.50	Depositor EDS
% Data completeness (in resolution range)	85.3 (43.64-2.50) 87.1 (43.64-2.50)	Depositor EDS
$R_{merge}$	(Not available)	Depositor
$R_{sym}$	0.12	Depositor
$\langle I/\sigma(I) \rangle$ <sup>1</sup>	3.15 (at 2.51Å)	Xtriage
Refinement program	CNS 1.1	Depositor
R, $R_{free}$	0.217 , 0.267 0.213 , 0.262	Depositor DCC
$R_{free}$ test set	1770 reflections (10.02%)	wwPDB-VP
Wilson B-factor (Å <sup>2</sup> )	47.5	Xtriage
Anisotropy	0.051	Xtriage
Bulk solvent $k_{sol}$ (e/Å <sup>3</sup> ), $B_{sol}$ (Å <sup>2</sup> )	0.35 , 45.3	EDS
L-test for twinning <sup>2</sup>	$\langle  L  \rangle = 0.49$ , $\langle L^2 \rangle = 0.33$	Xtriage
Estimated twinning fraction	No twinning to report.	Xtriage
$F_o, F_c$ correlation	0.93	EDS
Total number of atoms	3065	wwPDB-VP
Average B, all atoms (Å <sup>2</sup> )	46.0	wwPDB-VP

Xtriage's analysis on translational NCS is as follows: *The largest off-origin peak in the Patterson function is 2.91% of the height of the origin peak. No significant pseudotranslation is detected.*

<sup>1</sup>Intensities estimated from amplitudes.

<sup>2</sup>Theoretical values of  $\langle |L| \rangle$ ,  $\langle L^2 \rangle$  for acentric reflections are 0.5, 0.333 respectively for untwinned datasets, and 0.375, 0.2 for perfectly twinned datasets.



## 5 Model quality

### 5.1 Standard geometry

Bond lengths and bond angles in the following residue types are not validated in this section: FMT, ACP, NA

The Z score for a bond length (or angle) is the number of standard deviations the observed value is removed from the expected value. A bond length (or angle) with  $|Z| > 5$  is considered an outlier worth inspection. RMSZ is the root-mean-square of all Z scores of the bond lengths (or angles).

Mol	Chain	Bond lengths		Bond angles	
		RMSZ	$\# Z  > 5$	RMSZ	$\# Z  > 5$
1	A	0.34	0/3005	0.60	0/4028

There are no bond length outliers.

There are no bond angle outliers.

There are no chirality outliers.

There are no planarity outliers.

### 5.2 Too-close contacts

In the following table, the Non-H and H(model) columns list the number of non-hydrogen atoms and hydrogen atoms in the chain respectively. The H(added) column lists the number of hydrogen atoms added and optimized by MolProbity. The Clashes column lists the number of clashes within the asymmetric unit, whereas Symm-Clashes lists symmetry-related clashes.

Mol	Chain	Non-H	H(model)	H(added)	Clashes	Symm-Clashes
1	A	2958	0	2993	73	1
2	A	1	0	0	0	0
3	A	31	0	14	2	0
4	A	12	0	8	2	0
5	A	63	0	0	1	0
All	All	3065	0	3015	73	1

The all-atom clashscore is defined as the number of clashes found per 1000 atoms (including hydrogen atoms). The all-atom clashscore for this structure is 12.

All (73) close contacts within the same asymmetric unit are listed below, sorted by their clash magnitude.

Atom-1	Atom-2	Interatomic distance (Å)	Clash overlap (Å)
1:A:130:VAL:HG21	1:A:204:LEU:HD11	1.54	0.88
1:A:233:THR:HB	1:A:236:GLU:HB3	1.56	0.85
1:A:130:VAL:CG2	1:A:204:LEU:HD11	2.17	0.74
1:A:150:LYS:NZ	1:A:152:ILE:HD11	2.07	0.70
1:A:345:VAL:HG13	1:A:352:PRO:HG3	1.76	0.65
1:A:234:TYR:O	1:A:238:LYS:HB2	1.96	0.65
1:A:5:LEU:HB2	1:A:68:PHE:CE2	2.33	0.63
1:A:193:ARG:HD2	5:A:434:HOH:O	1.99	0.62
1:A:345:VAL:CG1	1:A:352:PRO:HG3	2.31	0.59
1:A:150:LYS:HZ3	1:A:152:ILE:HD11	1.66	0.59
1:A:189:ILE:HD12	1:A:284:TRP:HB3	1.84	0.59
1:A:55:ARG:O	1:A:59:GLU:HB2	2.02	0.58
1:A:183:MSE:HB2	1:A:305:LEU:HB2	1.86	0.57
1:A:214:ARG:HG2	1:A:242:VAL:HA	1.86	0.57
1:A:319:ARG:HD2	4:A:404:FMT:O2	2.04	0.57
1:A:313:VAL:HB	1:A:314:PRO:HD3	1.87	0.56
1:A:135:MSE:HE2	1:A:140:ARG:HG2	1.87	0.56
1:A:275:ARG:HG3	4:A:404:FMT:H	1.88	0.55
1:A:20:GLU:O	1:A:21:ASP:HB2	2.08	0.54
1:A:230:GLY:C	1:A:232:PHE:H	2.10	0.54
1:A:373:ILE:O	1:A:373:ILE:HG22	2.08	0.53
1:A:189:ILE:HD12	1:A:284:TRP:CB	2.39	0.53
1:A:152:ILE:HG22	1:A:204:LEU:HD12	1.90	0.53
1:A:368:SER:HA	1:A:371:ASP:OD2	2.10	0.52
1:A:42:LYS:HE3	1:A:42:LYS:HA	1.92	0.52
1:A:153:PHE:N	1:A:153:PHE:CD2	2.77	0.52
1:A:179:VAL:HG11	1:A:285:ILE:HG23	1.91	0.51
1:A:278:ALA:HB2	1:A:312:LEU:HD12	1.93	0.51
1:A:173:TYR:CZ	1:A:195:GLY:HA2	2.45	0.51
1:A:211:THR:HB	1:A:212:PRO:CD	2.40	0.51
1:A:328:VAL:HG12	1:A:330:PRO:HD3	1.94	0.50
1:A:153:PHE:CE1	1:A:158:GLN:HG3	2.47	0.50
1:A:127:VAL:HG13	1:A:338:LEU:HD23	1.93	0.50
1:A:245:GLY:O	1:A:248:VAL:HG12	2.12	0.49
1:A:7:ILE:HD12	1:A:113:ALA:HB2	1.95	0.49
1:A:152:ILE:CG2	1:A:204:LEU:HD12	2.41	0.49
1:A:305:LEU:HB3	1:A:312:LEU:CD2	2.43	0.49
1:A:153:PHE:CD1	1:A:158:GLN:HG3	2.47	0.48
1:A:361:ARG:O	1:A:365:ARG:HD3	2.13	0.48
1:A:261:ARG:O	1:A:265:GLN:HG3	2.12	0.48
1:A:144:HIS:ND1	1:A:145:PRO:HD2	2.29	0.47
1:A:242:VAL:HG12	1:A:242:VAL:O	2.14	0.47

Continued on next page...

*Continued from previous page...*

Atom-1	Atom-2	Interatomic distance (Å)	Clash overlap (Å)
1:A:316:ILE:O	1:A:320:VAL:HG22	2.15	0.47
1:A:258:GLU:HA	1:A:261:ARG:NH1	2.30	0.46
1:A:236:GLU:O	1:A:239:LYS:HG2	2.16	0.46
1:A:315:TRP:O	1:A:319:ARG:HG3	2.15	0.46
1:A:39:ARG:HG2	1:A:39:ARG:O	2.15	0.46
1:A:184:GLY:HA2	3:A:399:ACP:H5'1	1.98	0.46
1:A:52:LYS:O	1:A:56:GLN:HB2	2.16	0.45
1:A:127:VAL:HG13	1:A:338:LEU:CD2	2.47	0.45
1:A:173:TYR:CE2	1:A:195:GLY:HA2	2.53	0.44
1:A:229:SER:C	1:A:231:LYS:H	2.21	0.44
1:A:211:THR:HB	1:A:212:PRO:HD2	1.99	0.44
1:A:370:LEU:C	1:A:372:GLY:H	2.21	0.44
1:A:262:ARG:HA	1:A:265:GLN:HE21	1.83	0.43
1:A:343:LEU:HG	1:A:347:ARG:HD2	1.99	0.43
1:A:55:ARG:NH2	1:A:119:GLU:OE2	2.47	0.43
1:A:230:GLY:C	1:A:232:PHE:N	2.71	0.43
1:A:17:SER:HA	1:A:26:LYS:O	2.18	0.43
1:A:256:ALA:HB3	3:A:399:ACP:N3	2.34	0.42
1:A:153:PHE:N	1:A:153:PHE:HD2	2.16	0.42
1:A:135:MSE:HA	1:A:198:ILE:HA	2.00	0.42
1:A:47:LEU:HD21	1:A:115:ARG:NH2	2.34	0.42
1:A:47:LEU:HD12	1:A:47:LEU:O	2.20	0.42
1:A:55:ARG:HH11	1:A:55:ARG:HG2	1.85	0.42
1:A:152:ILE:HG22	1:A:204:LEU:CG	2.50	0.42
1:A:351:LYS:HA	1:A:352:PRO:HD3	1.80	0.41
1:A:190:ALA:HB1	1:A:197:VAL:HG13	2.02	0.41
1:A:354:ASN:OD1	1:A:356:SER:HB3	2.19	0.41
1:A:96:LEU:CD1	1:A:110:ALA:HB3	2.50	0.41
1:A:40:PHE:HB3	1:A:45:ASP:HB2	2.02	0.41
1:A:256:ALA:O	1:A:260:VAL:HG23	2.22	0.40
1:A:375:ARG:NH1	1:A:375:ARG:HB2	2.36	0.40

All (1) symmetry-related close contacts are listed below. The label for Atom-2 includes the symmetry operator and encoded unit-cell translations to be applied.

Atom-1	Atom-2	Interatomic distance (Å)	Clash overlap (Å)
1:A:227:CYS:SG	1:A:227:CYS:SG[6_556]	2.05	0.15

## 5.3 Torsion angles

### 5.3.1 Protein backbone

In the following table, the Percentiles column shows the percent Ramachandran outliers of the chain as a percentile score with respect to all X-ray entries followed by that with respect to entries of similar resolution.

The Analysed column shows the number of residues for which the backbone conformation was analysed, and the total number of residues.

Mol	Chain	Analysed	Favoured	Allowed	Outliers	Percentiles	
1	A	373/381 (98%)	338 (91%)	33 (9%)	2 (0%)	25	44

All (2) Ramachandran outliers are listed below:

Mol	Chain	Res	Type
1	A	332	SER
1	A	371	ASP

### 5.3.2 Protein sidechains

In the following table, the Percentiles column shows the percent sidechain outliers of the chain as a percentile score with respect to all X-ray entries followed by that with respect to entries of similar resolution.

The Analysed column shows the number of residues for which the sidechain conformation was analysed, and the total number of residues.

Mol	Chain	Analysed	Rotameric	Outliers	Percentiles	
1	A	315/309 (102%)	301 (96%)	14 (4%)	24	47

All (14) residues with a non-rotameric sidechain are listed below:

Mol	Chain	Res	Type
1	A	27	MSE
1	A	42	LYS
1	A	52	LYS
1	A	72	VAL
1	A	87	LEU
1	A	127	VAL
1	A	130	VAL
1	A	153	PHE
1	A	183	MSE

*Continued on next page...*

*Continued from previous page...*

Mol	Chain	Res	Type
1	A	228	PHE
1	A	234	TYR
1	A	235	GLU
1	A	284	TRP
1	A	367	ASP

Sometimes sidechains can be flipped to improve hydrogen bonding and reduce clashes. All (3) such sidechains are listed below:

Mol	Chain	Res	Type
1	A	28	GLN
1	A	157	ASN
1	A	265	GLN

### 5.3.3 RNA [i](#)

There are no RNA molecules in this entry.

## 5.4 Non-standard residues in protein, DNA, RNA chains [i](#)

There are no non-standard protein/DNA/RNA residues in this entry.

## 5.5 Carbohydrates [i](#)

There are no oligosaccharides in this entry.

## 5.6 Ligand geometry [i](#)

Of 6 ligands modelled in this entry, 1 is monoatomic - leaving 5 for Mogul analysis.

In the following table, the Counts columns list the number of bonds (or angles) for which Mogul statistics could be retrieved, the number of bonds (or angles) that are observed in the model and the number of bonds (or angles) that are defined in the Chemical Component Dictionary. The Link column lists molecule types, if any, to which the group is linked. The Z score for a bond length (or angle) is the number of standard deviations the observed value is removed from the expected value. A bond length (or angle) with  $|Z| > 2$  is considered an outlier worth inspection. RMSZ is the root-mean-square of all Z scores of the bond lengths (or angles).

Mol	Type	Chain	Res	Link	Bond lengths			Bond angles		
					Counts	RMSZ	$\# Z  > 2$	Counts	RMSZ	$\# Z  > 2$
4	FMT	A	402	-	2,2,2	5.43	2 (100%)	1,1,1	1.30	0

Mol	Type	Chain	Res	Link	Bond lengths			Bond angles		
					Counts	RMSZ	# Z  > 2	Counts	RMSZ	# Z  > 2
4	FMT	A	404	-	2,2,2	5.29	2 (100%)	1,1,1	1.36	0
4	FMT	A	403	-	2,2,2	5.42	2 (100%)	1,1,1	1.30	0
3	ACP	A	399	-	27,33,33	2.04	5 (18%)	33,52,52	2.27	12 (36%)
4	FMT	A	401	-	2,2,2	5.43	2 (100%)	1,1,1	1.30	0

In the following table, the Chirals column lists the number of chiral outliers, the number of chiral centers analysed, the number of these observed in the model and the number defined in the Chemical Component Dictionary. Similar counts are reported in the Torsion and Rings columns. '-' means no outliers of that kind were identified.

Mol	Type	Chain	Res	Link	Chirals	Torsions	Rings
3	ACP	A	399	-	-	1/15/38/38	0/3/3/3

All (13) bond length outliers are listed below:

Mol	Chain	Res	Type	Atoms	Z	Observed(Å)	Ideal(Å)
3	A	399	ACP	PB-O3A	7.27	1.66	1.58
4	A	401	FMT	O1-C	5.53	1.52	1.22
4	A	402	FMT	O1-C	5.50	1.52	1.22
4	A	404	FMT	O1-C	5.49	1.52	1.22
4	A	403	FMT	O1-C	5.47	1.52	1.22
4	A	403	FMT	O2-C	5.38	1.56	1.28
4	A	402	FMT	O2-C	5.35	1.56	1.28
4	A	401	FMT	O2-C	5.33	1.55	1.28
4	A	404	FMT	O2-C	5.07	1.54	1.28
3	A	399	ACP	PB-O2B	-3.78	1.47	1.56
3	A	399	ACP	C2-N3	2.83	1.36	1.32
3	A	399	ACP	PG-O2G	-2.37	1.49	1.55
3	A	399	ACP	O4'-C4'	-2.24	1.40	1.45

All (12) bond angle outliers are listed below:

Mol	Chain	Res	Type	Atoms	Z	Observed(°)	Ideal(°)
3	A	399	ACP	O5'-C5'-C4'	6.25	130.27	108.99
3	A	399	ACP	N3-C2-N1	-4.16	123.02	128.67
3	A	399	ACP	O3G-PG-C3B	-4.14	96.36	106.40
3	A	399	ACP	C5'-C4'-C3'	-3.50	102.62	115.21
3	A	399	ACP	PB-O3A-PA	3.18	142.74	132.37
3	A	399	ACP	O2A-PA-O5'	2.97	121.03	107.57
3	A	399	ACP	O2B-PB-C3B	2.84	118.50	106.73
3	A	399	ACP	C6-C5-C4	-2.78	112.48	117.90

*Continued on next page...*

*Continued from previous page...*

Mol	Chain	Res	Type	Atoms	Z	Observed(°)	Ideal(°)
3	A	399	ACP	C4-C5-N7	2.63	112.12	109.34
3	A	399	ACP	C1'-N9-C4	-2.45	122.34	126.64
3	A	399	ACP	O2G-PG-C3B	2.38	112.17	106.40
3	A	399	ACP	O1B-PB-C3B	-2.30	102.99	109.05

There are no chirality outliers.

All (1) torsion outliers are listed below:

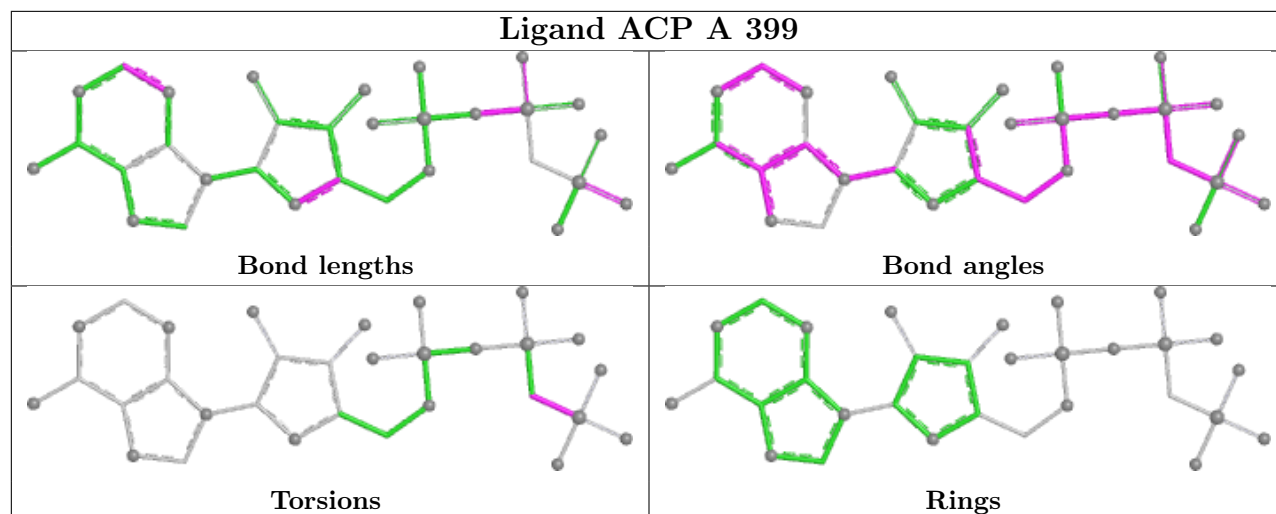
Mol	Chain	Res	Type	Atoms
3	A	399	ACP	PB-C3B-PG-O1G

There are no ring outliers.

2 monomers are involved in 4 short contacts:

Mol	Chain	Res	Type	Clashes	Symm-Clashes
4	A	404	FMT	2	0
3	A	399	ACP	2	0

The following is a two-dimensional graphical depiction of Mogul quality analysis of bond lengths, bond angles, torsion angles, and ring geometry for all instances of the Ligand of Interest. In addition, ligands with molecular weight > 250 and outliers as shown on the validation Tables will also be included. For torsion angles, if less than 5% of the Mogul distribution of torsion angles is within 10 degrees of the torsion angle in question, then that torsion angle is considered an outlier. Any bond that is central to one or more torsion angles identified as an outlier by Mogul will be highlighted in the graph. For rings, the root-mean-square deviation (RMSD) between the ring in question and similar rings identified by Mogul is calculated over all ring torsion angles. If the average RMSD is greater than 60 degrees and the minimal RMSD between the ring in question and any Mogul-identified rings is also greater than 60 degrees, then that ring is considered an outlier. The outliers are highlighted in purple. The color gray indicates Mogul did not find sufficient equivalents in the CSD to analyse the geometry.



## 5.7 Other polymers [i](#)

There are no such residues in this entry.

## 5.8 Polymer linkage issues [i](#)

There are no chain breaks in this entry.



## 6 Fit of model and data ⓘ

### 6.1 Protein, DNA and RNA chains ⓘ

In the following table, the column labelled ‘#RSRZ> 2’ contains the number (and percentage) of RSRZ outliers, followed by percent RSRZ outliers for the chain as percentile scores relative to all X-ray entries and entries of similar resolution. The OWAB column contains the minimum, median, 95<sup>th</sup> percentile and maximum values of the occupancy-weighted average B-factor per residue. The column labelled ‘Q< 0.9’ lists the number of (and percentage) of residues with an average occupancy less than 0.9.

Mol	Chain	Analysed	<RSRZ>	#RSRZ>2		OWAB(Å <sup>2</sup> )	Q<0.9
1	A	363/381 (95%)	0.50	42 (11%)	11 10	16, 41, 89, 128	0

All (42) RSRZ outliers are listed below:

Mol	Chain	Res	Type	RSRZ
1	A	228	PHE	5.4
1	A	373	ILE	5.3
1	A	234	TYR	5.0
1	A	375	ARG	5.0
1	A	230	GLY	4.6
1	A	242	VAL	4.3
1	A	243	GLY	4.1
1	A	372	GLY	3.7
1	A	374	LEU	3.6
1	A	232	PHE	3.6
1	A	233	THR	3.2
1	A	229	SER	3.2
1	A	244	ASN	3.1
1	A	240	ARG	3.1
1	A	236	GLU	3.1
1	A	370	LEU	3.1
1	A	35	ASP	3.1
1	A	241	ILE	3.0
1	A	34	PRO	3.0
1	A	231	LYS	2.9
1	A	235	GLU	2.8
1	A	364	GLU	2.8
1	A	332	SER	2.8
1	A	368	SER	2.8
1	A	239	LYS	2.8
1	A	371	ASP	2.6
1	A	33	SER	2.6

*Continued on next page...*

*Continued from previous page...*

Mol	Chain	Res	Type	RSRZ
1	A	227	CYS	2.6
1	A	60	GLU	2.5
1	A	245	GLY	2.5
1	A	269	TRP	2.5
1	A	61	THR	2.5
1	A	225	ASP	2.3
1	A	362	TRP	2.3
1	A	39	ARG	2.2
1	A	369	TYR	2.2
1	A	204	LEU	2.1
1	A	43	ILE	2.1
1	A	360	ARG	2.1
1	A	104	HIS	2.1
1	A	48	GLU	2.0
1	A	365	ARG	2.0

## 6.2 Non-standard residues in protein, DNA, RNA chains [i](#)

There are no non-standard protein/DNA/RNA residues in this entry.

## 6.3 Carbohydrates [i](#)

There are no monosaccharides in this entry.

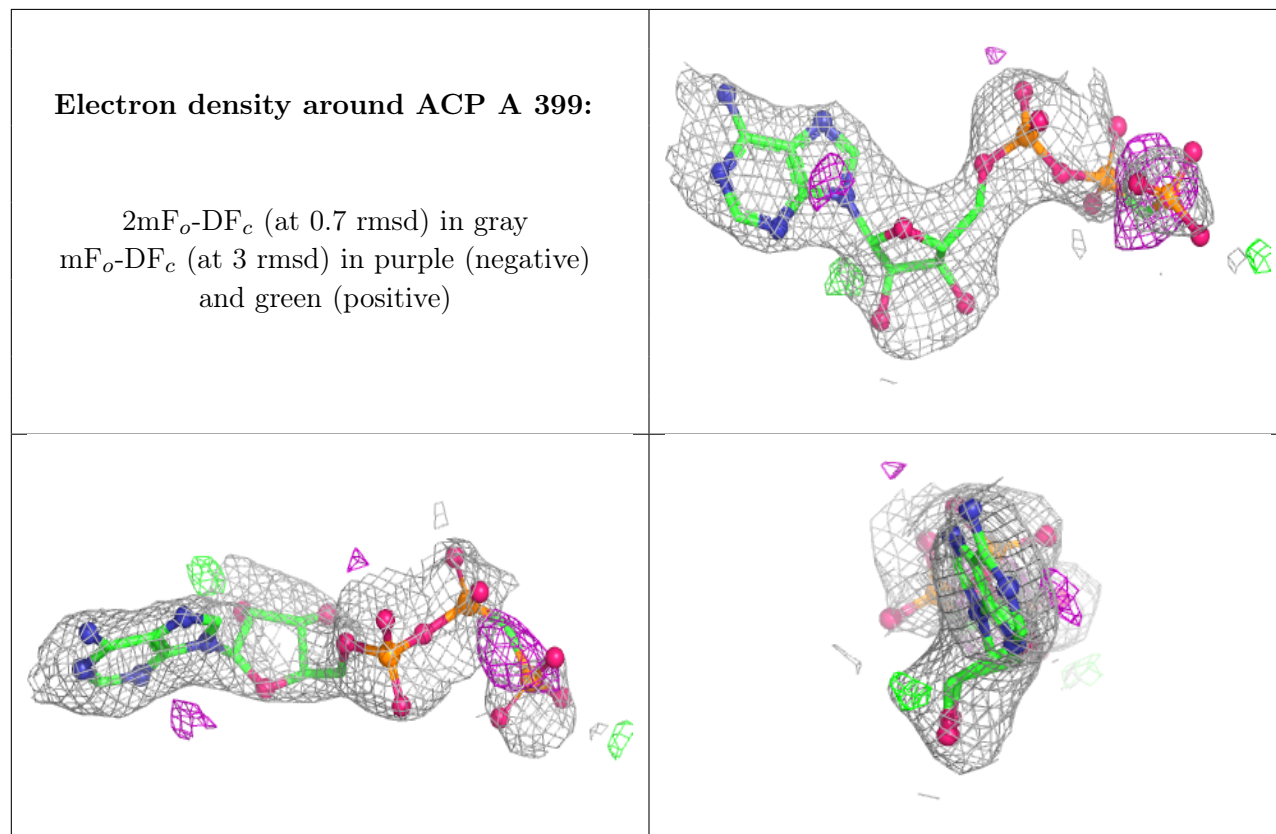
## 6.4 Ligands [i](#)

In the following table, the Atoms column lists the number of modelled atoms in the group and the number defined in the chemical component dictionary. The B-factors column lists the minimum, median, 95<sup>th</sup> percentile and maximum values of B factors of atoms in the group. The column labelled 'Q < 0.9' lists the number of atoms with occupancy less than 0.9.

Mol	Type	Chain	Res	Atoms	RSCC	RSR	B-factors( $\text{\AA}^2$ )	Q<0.9
3	ACP	A	399	31/31	0.84	0.16	53,66,107,108	0
4	FMT	A	402	3/3	0.87	0.13	57,57,57,59	0
4	FMT	A	403	3/3	0.87	0.15	43,43,44,44	0
4	FMT	A	401	3/3	0.88	0.16	44,44,45,46	0
2	NA	A	390	1/1	0.90	0.09	36,36,36,36	0
4	FMT	A	404	3/3	0.96	0.09	33,33,36,36	0

The following is a graphical depiction of the model fit to experimental electron density of all

instances of the Ligand of Interest. In addition, ligands with molecular weight > 250 and outliers as shown on the geometry validation Tables will also be included. Each fit is shown from different orientation to approximate a three-dimensional view.



## 6.5 Other polymers [i](#)

There are no such residues in this entry.