



# Full wwPDB X-ray Structure Validation Report ⓘ

Aug 24, 2025 – 11:13 pm BST

PDB ID : 8S1L / pdb\_00008s1l  
Title : Crystal structure of Renilla reniformis luciferase RLuc8-GFP BRET complex at pH 6.0  
Authors : Marek, M.; Smrckova, A.  
Deposited on : 2024-02-15  
Resolution : 2.40 Å(reported)

This is a Full wwPDB X-ray Structure Validation Report for a publicly released PDB entry.

We welcome your comments at [validation@mail.wwpdb.org](mailto:validation@mail.wwpdb.org)

A user guide is available at

<https://www.wwpdb.org/validation/2017/XrayValidationReportHelp>

with specific help available everywhere you see the ⓘ symbol.

The types of validation reports are described at

<http://www.wwpdb.org/validation/2017/FAQs#types>.

---

The following versions of software and data (see [references ⓘ](#)) were used in the production of this report:

MolProbity : 4-5-2 with Phenix2.0rc1  
Mogul : 1.8.4, CSD as541be (2020)  
Xtriage (Phenix) : 2.0rc1  
EDS : 3.0  
buster-report : 1.1.7 (2018)  
Percentile statistics : 20231227.v01 (using entries in the PDB archive December 27th 2023)  
CCP4 : 9.0.006 (Gargrove)  
Density-Fitness : 1.0.12  
Ideal geometry (proteins) : Engh & Huber (2001)  
Ideal geometry (DNA, RNA) : Parkinson et al. (1996)  
Validation Pipeline (wwPDB-VP) : 2.45.1

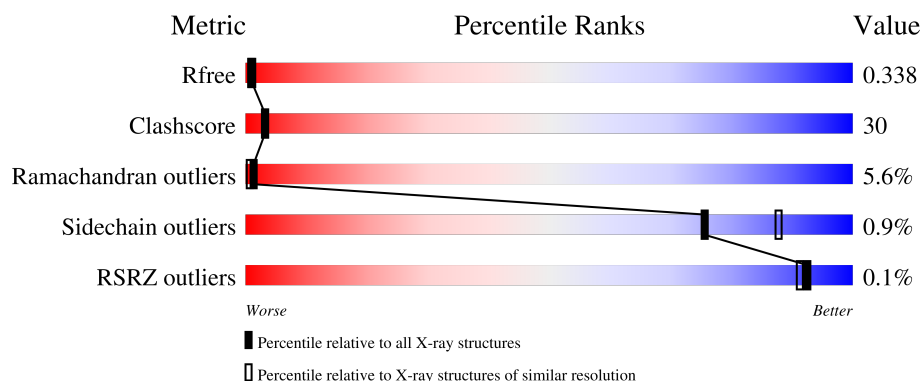
# 1 Overall quality at a glance

The following experimental techniques were used to determine the structure:

*X-RAY DIFFRACTION*

The reported resolution of this entry is 2.40 Å.

Percentile scores (ranging between 0-100) for global validation metrics of the entry are shown in the following graphic. The table shows the number of entries on which the scores are based.






Metric	Whole archive (#Entries)	Similar resolution (#Entries, resolution range(Å))
$R_{free}$	164625	4642 (2.40-2.40)
Clashscore	180529	5218 (2.40-2.40)
Ramachandran outliers	177936	5158 (2.40-2.40)
Sidechain outliers	177891	5159 (2.40-2.40)
RSRZ outliers	164620	4642 (2.40-2.40)

The table below summarises the geometric issues observed across the polymeric chains and their fit to the electron density. The red, orange, yellow and green segments of the lower bar indicate the fraction of residues that contain outliers for  $\geq 3$ , 2, 1 and 0 types of geometric quality criteria respectively. A grey segment represents the fraction of residues that are not modelled. The numeric value for each fraction is indicated below the corresponding segment, with a dot representing fractions  $\leq 5\%$ . The upper red bar (where present) indicates the fraction of residues that have poor fit to the electron density. The numeric value is given above the bar.

Mol	Chain	Length	Quality of chain
1	A	231	<div> <div>%</div> <div> <div></div> <div>42%</div> <div>50%</div> <div>6%</div> </div> </div>
1	B	231	<div> <div>38%</div> <div>54%</div> <div>7%</div> </div>
1	E	231	<div> <div>42%</div> <div>51%</div> <div>6%</div> </div>
1	F	231	<div> <div>34%</div> <div>58%</div> <div>5%</div> </div>
2	C	319	<div> <div>53%</div> <div>43%</div> </div>

*Continued on next page...*

*Continued from previous page...*

Mol	Chain	Length	Quality of chain
2	D	319	 49% 45% . .
2	G	319	 50% 44% . . .
2	H	319	 52% 43% .

## 2 Entry composition

There are 4 unique types of molecules in this entry. The entry contains 17772 atoms, of which 0 are hydrogens and 0 are deuteriums.

In the tables below, the ZeroOcc column contains the number of atoms modelled with zero occupancy, the AltConf column contains the number of residues with at least one atom in alternate conformation and the Trace column contains the number of residues modelled with at most 2 atoms.

- Molecule 1 is a protein called Green fluorescent protein.

Mol	Chain	Residues	Atoms					ZeroOcc	AltConf	Trace
1	A	231	Total	C	N	O	S	0	0	0
			1828	1171	301	346	10			
1	B	230	Total	C	N	O	S	0	0	0
			1820	1166	300	345	9			
1	E	231	Total	C	N	O	S	0	0	0
			1828	1171	301	346	10			
1	F	230	Total	C	N	O	S	0	0	0
			1820	1166	300	345	9			

There are 12 discrepancies between the modelled and reference sequences:

Chain	Residue	Modelled	Actual	Comment	Reference
A	66	CRO	SER	chromophore	UNP Q963I9
A	66	CRO	TYR	chromophore	UNP Q963I9
A	66	CRO	GLY	chromophore	UNP Q963I9
B	66	CRO	SER	chromophore	UNP Q963I9
B	66	CRO	TYR	chromophore	UNP Q963I9
B	66	CRO	GLY	chromophore	UNP Q963I9
E	66	CRO	SER	chromophore	UNP Q963I9
E	66	CRO	TYR	chromophore	UNP Q963I9
E	66	CRO	GLY	chromophore	UNP Q963I9
F	66	CRO	SER	chromophore	UNP Q963I9
F	66	CRO	TYR	chromophore	UNP Q963I9
F	66	CRO	GLY	chromophore	UNP Q963I9

- Molecule 2 is a protein called Coelenterazine h 2-monooxygenase.

Mol	Chain	Residues	Atoms					ZeroOcc	AltConf	Trace
2	C	316	Total	C	N	O	S	0	1	0
			2592	1677	433	473	9			
2	D	308	Total	C	N	O	S	0	1	0
			2532	1640	424	459	9			

*Continued on next page...*

*Continued from previous page...*

Mol	Chain	Residues	Atoms					ZeroOcc	AltConf	Trace
2	G	308	Total	C	N	O	S	0	1	0
			2532	1640	424	459	9			
2	H	318	Total	C	N	O	S	0	0	0
			2603	1686	435	473	9			

There are 64 discrepancies between the modelled and reference sequences:

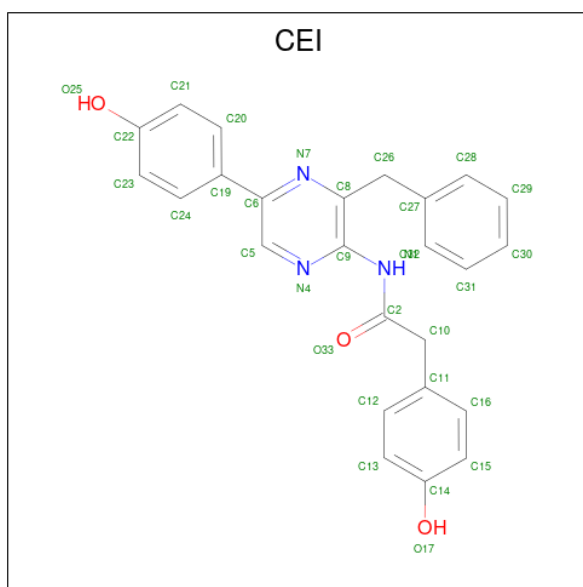
Chain	Residue	Modelled	Actual	Comment	Reference
C	55	THR	ALA	engineered mutation	UNP P27652
C	124	ALA	CYS	engineered mutation	UNP P27652
C	130	ALA	SER	engineered mutation	UNP P27652
C	136	ARG	LYS	engineered mutation	UNP P27652
C	143	MET	ALA	engineered mutation	UNP P27652
C	185	VAL	MET	engineered mutation	UNP P27652
C	253	LEU	MET	engineered mutation	UNP P27652
C	287	LEU	SER	engineered mutation	UNP P27652
C	312	SER	-	expression tag	UNP P27652
C	313	GLY	-	expression tag	UNP P27652
C	314	LEU	-	expression tag	UNP P27652
C	315	GLU	-	expression tag	UNP P27652
C	316	VAL	-	expression tag	UNP P27652
C	317	LEU	-	expression tag	UNP P27652
C	318	PHE	-	expression tag	UNP P27652
C	319	GLN	-	expression tag	UNP P27652
D	55	THR	ALA	engineered mutation	UNP P27652
D	124	ALA	CYS	engineered mutation	UNP P27652
D	130	ALA	SER	engineered mutation	UNP P27652
D	136	ARG	LYS	engineered mutation	UNP P27652
D	143	MET	ALA	engineered mutation	UNP P27652
D	185	VAL	MET	engineered mutation	UNP P27652
D	253	LEU	MET	engineered mutation	UNP P27652
D	287	LEU	SER	engineered mutation	UNP P27652
D	312	SER	-	expression tag	UNP P27652
D	313	GLY	-	expression tag	UNP P27652
D	314	LEU	-	expression tag	UNP P27652
D	315	GLU	-	expression tag	UNP P27652
D	316	VAL	-	expression tag	UNP P27652
D	317	LEU	-	expression tag	UNP P27652
D	318	PHE	-	expression tag	UNP P27652
D	319	GLN	-	expression tag	UNP P27652
G	55	THR	ALA	engineered mutation	UNP P27652
G	124	ALA	CYS	engineered mutation	UNP P27652

*Continued on next page...*

*Continued from previous page...*

Chain	Residue	Modelled	Actual	Comment	Reference
G	130	ALA	SER	engineered mutation	UNP P27652
G	136	ARG	LYS	engineered mutation	UNP P27652
G	143	MET	ALA	engineered mutation	UNP P27652
G	185	VAL	MET	engineered mutation	UNP P27652
G	253	LEU	MET	engineered mutation	UNP P27652
G	287	LEU	SER	engineered mutation	UNP P27652
G	312	SER	-	expression tag	UNP P27652
G	313	GLY	-	expression tag	UNP P27652
G	314	LEU	-	expression tag	UNP P27652
G	315	GLU	-	expression tag	UNP P27652
G	316	VAL	-	expression tag	UNP P27652
G	317	LEU	-	expression tag	UNP P27652
G	318	PHE	-	expression tag	UNP P27652
G	319	GLN	-	expression tag	UNP P27652
H	55	THR	ALA	engineered mutation	UNP P27652
H	124	ALA	CYS	engineered mutation	UNP P27652
H	130	ALA	SER	engineered mutation	UNP P27652
H	136	ARG	LYS	engineered mutation	UNP P27652
H	143	MET	ALA	engineered mutation	UNP P27652
H	185	VAL	MET	engineered mutation	UNP P27652
H	253	LEU	MET	engineered mutation	UNP P27652
H	287	LEU	SER	engineered mutation	UNP P27652
H	312	SER	-	expression tag	UNP P27652
H	313	GLY	-	expression tag	UNP P27652
H	314	LEU	-	expression tag	UNP P27652
H	315	GLU	-	expression tag	UNP P27652
H	316	VAL	-	expression tag	UNP P27652
H	317	LEU	-	expression tag	UNP P27652
H	318	PHE	-	expression tag	UNP P27652
H	319	GLN	-	expression tag	UNP P27652

- Molecule 3 is N-[3-BENZYL-5-(4-HYDROXYPHENYL)PYRAZIN-2-YL]-2-(4-HYDROXYPHENYL)ACETAMIDE (CCD ID: CEI) (formula: C<sub>25</sub>H<sub>21</sub>N<sub>3</sub>O<sub>3</sub>) (labeled as "Ligand of Interest" by depositor).



Mol	Chain	Residues	Atoms				ZeroOcc	AltConf
3	C	1	Total	C	N	O	0	0
			31	25	3	3		
3	D	1	Total	C	N	O	0	0
			31	25	3	3		
3	G	1	Total	C	N	O	0	0
			31	25	3	3		
3	H	1	Total	C	N	O	0	0
			31	25	3	3		

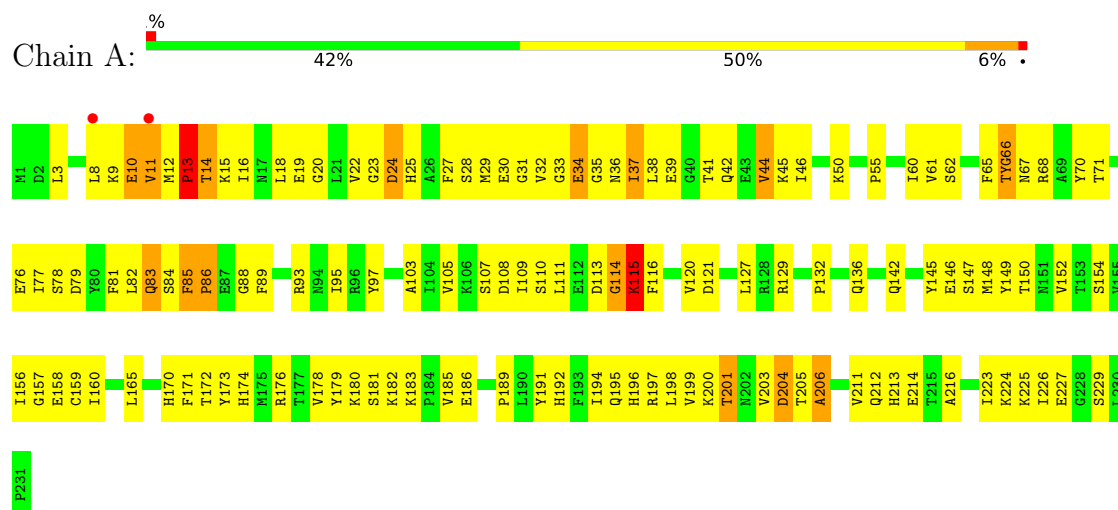
- Molecule 4 is water.

Mol	Chain	Residues	Atoms		ZeroOcc	AltConf
4	A	7	Total	O	0	0
			7	7		
4	B	10	Total	O	0	0
			10	10		
4	C	23	Total	O	0	0
			23	23		
4	D	12	Total	O	0	0
			12	12		
4	E	3	Total	O	0	0
			3	3		
4	F	6	Total	O	0	0
			6	6		
4	G	11	Total	O	0	0
			11	11		
4	H	21	Total	O	0	0
			21	21		

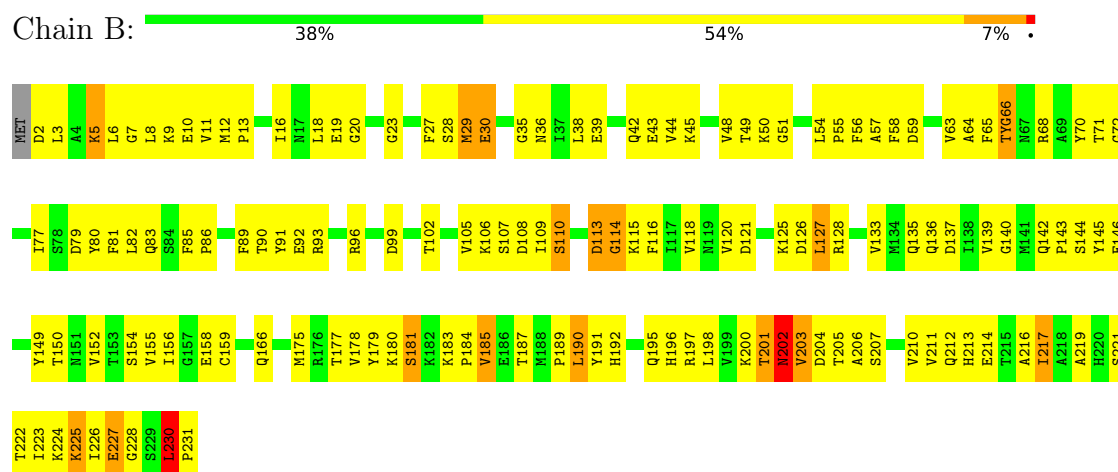
### 3 Residue-property plots

These plots are drawn for all protein, RNA, DNA and oligosaccharide chains in the entry. The first graphic for a chain summarises the proportions of the various outlier classes displayed in the second graphic. The second graphic shows the sequence view annotated by issues in geometry and electron density. Residues are color-coded according to the number of geometric quality criteria for which they contain at least one outlier: green = 0, yellow = 1, orange = 2 and red = 3 or more. A red dot above a residue indicates a poor fit to the electron density ( $RSRZ > 2$ ). Stretches of 2 or more consecutive residues without any outlier are shown as a green connector. Residues present in the sample, but not in the model, are shown in grey.

#### • Molecule 1: Green fluorescent protein



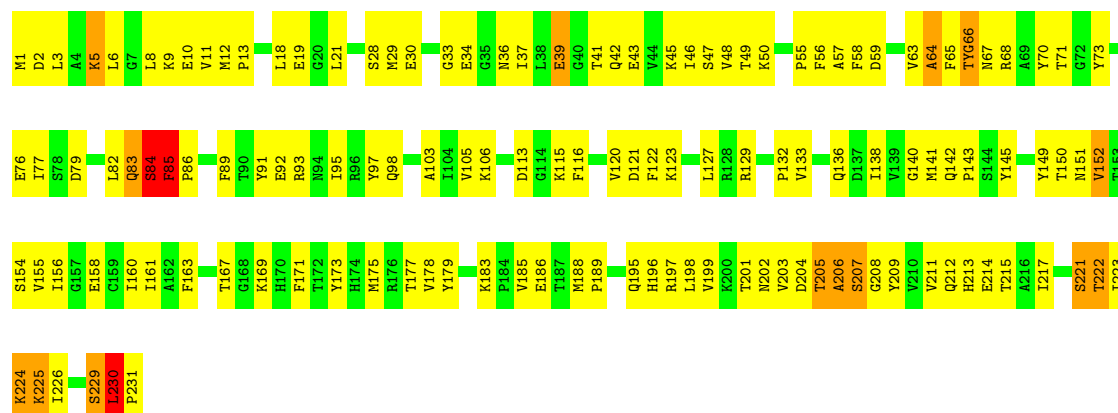
#### • Molecule 1: Green fluorescent protein



#### • Molecule 1: Green fluorescent protein

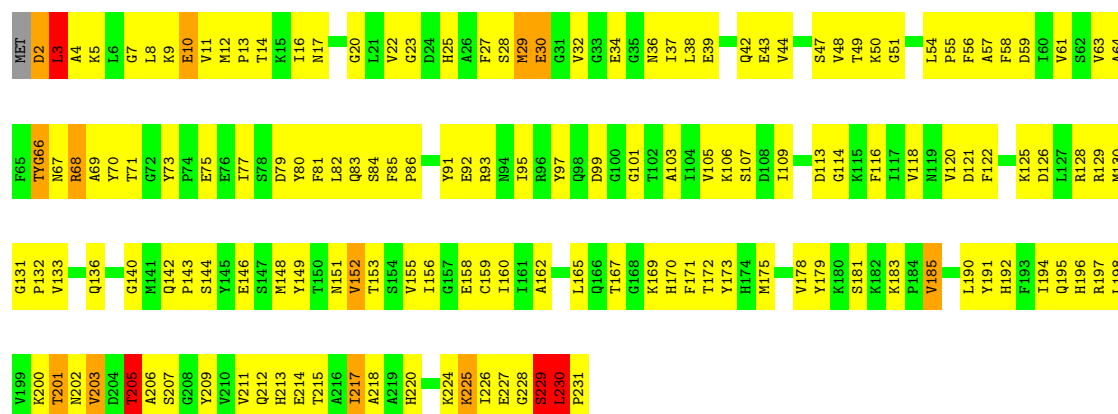






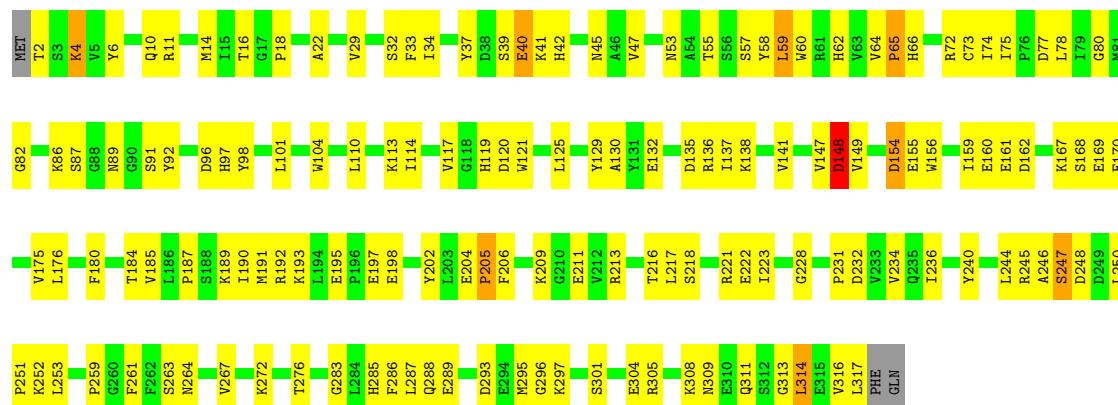
• Molecule 1: Green fluorescent protein

Chain F: 34% 58% 5% •



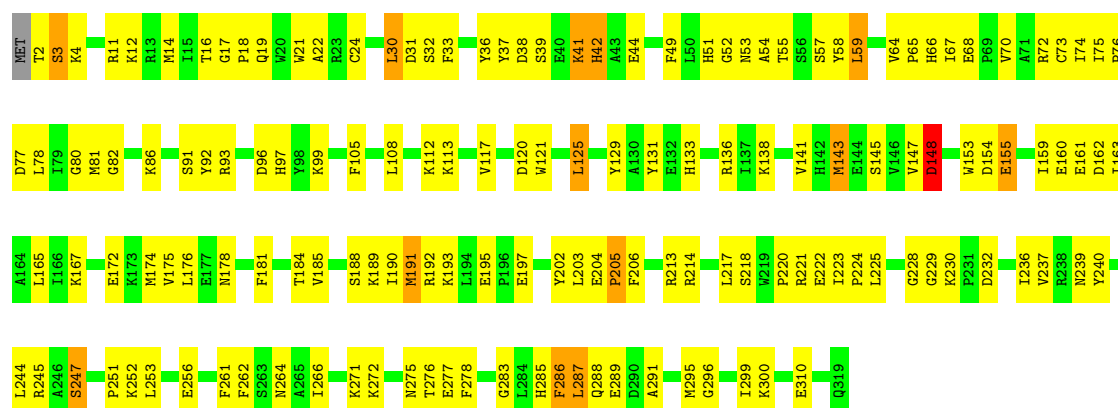
• Molecule 2: Coelenterazine h 2-monooxygenase

Chain C: 53% 43% • •



• Molecule 2: Coelenterazine h 2-monooxygenase

Chain D: 49% 45% • •



## 4 Data and refinement statistics

Property	Value	Source
Space group	P 32	Depositor
Cell constants a, b, c, $\alpha$ , $\beta$ , $\gamma$	95.93Å 95.93Å 357.13Å 90.00° 90.00° 120.00°	Depositor
Resolution (Å)	47.54 – 2.40 47.54 – 2.40	Depositor EDS
% Data completeness (in resolution range)	99.0 (47.54-2.40) 99.0 (47.54-2.40)	Depositor EDS
$R_{merge}$	(Not available)	Depositor
$R_{sym}$	(Not available)	Depositor
$\langle I/\sigma(I) \rangle$ <sup>1</sup>	1.11 (at 2.39Å)	Xtriage
Refinement program	PHENIX (1.14_3260)	Depositor
R, $R_{free}$	0.268 , 0.340 0.270 , 0.338	Depositor DCC
$R_{free}$ test set	7116 reflections (4.94%)	wwPDB-VP
Wilson B-factor (Å <sup>2</sup> )	55.7	Xtriage
Anisotropy	0.539	Xtriage
Bulk solvent $k_{sol}$ (e/Å <sup>3</sup> ), $B_{sol}$ (Å <sup>2</sup> )	0.30 , 50.5	EDS
L-test for twinning <sup>2</sup>	$\langle  L  \rangle = 0.51$ , $\langle L^2 \rangle = 0.34$	Xtriage
Estimated twinning fraction	0.013 for -h,-k,l 0.478 for h,-h-k,-l 0.018 for -k,-h,-l	Xtriage
$F_o, F_c$ correlation	0.96	EDS
Total number of atoms	17772	wwPDB-VP
Average B, all atoms (Å <sup>2</sup> )	78.0	wwPDB-VP

Xtriage's analysis on translational NCS is as follows: *The largest off-origin peak in the Patterson function is 3.58% of the height of the origin peak. No significant pseudotranslation is detected.*

<sup>1</sup>Intensities estimated from amplitudes.

<sup>2</sup>Theoretical values of  $\langle |L| \rangle$ ,  $\langle L^2 \rangle$  for acentric reflections are 0.5, 0.333 respectively for untwinned datasets, and 0.375, 0.2 for perfectly twinned datasets.

## 5 Model quality

### 5.1 Standard geometry

Bond lengths and bond angles in the following residue types are not validated in this section: CRO, CEI

The Z score for a bond length (or angle) is the number of standard deviations the observed value is removed from the expected value. A bond length (or angle) with  $|Z| > 5$  is considered an outlier worth inspection. RMSZ is the root-mean-square of all Z scores of the bond lengths (or angles).

Mol	Chain	Bond lengths		Bond angles	
		RMSZ	# $ Z  > 5$	RMSZ	# $ Z  > 5$
1	A	0.61	1/1845 (0.1%)	1.00	8/2489 (0.3%)
1	B	0.51	1/1837 (0.1%)	0.89	4/2479 (0.2%)
1	E	0.50	0/1845	0.88	1/2489 (0.0%)
1	F	0.51	0/1837	0.88	2/2479 (0.1%)
2	C	0.53	0/2664	0.81	1/3607 (0.0%)
2	D	0.47	0/2604	0.79	3/3526 (0.1%)
2	G	0.47	0/2604	0.78	2/3526 (0.1%)
2	H	0.54	1/2676 (0.0%)	0.79	2/3623 (0.1%)
All	All	0.52	3/17912 (0.0%)	0.84	23/24218 (0.1%)

Chiral center outliers are detected by calculating the chiral volume of a chiral center and verifying if the center is modelled as a planar moiety or with the opposite hand. A planarity outlier is detected by checking planarity of atoms in a peptide group, atoms in a mainchain group or atoms of a sidechain that are expected to be planar.

Mol	Chain	#Chirality outliers	#Planarity outliers
1	A	0	2
1	B	0	3
1	E	0	4
1	F	0	2
2	D	0	3
2	G	0	1
2	H	0	1
All	All	0	16

All (3) bond length outliers are listed below:

Mol	Chain	Res	Type	Atoms	Z	Observed(Å)	Ideal(Å)
1	A	13	PRO	N-CD	-10.64	1.32	1.47
2	H	155	GLU	CA-C	9.69	1.65	1.52
1	B	219	ALA	CA-CB	-5.34	1.50	1.54

All (23) bond angle outliers are listed below:

Mol	Chain	Res	Type	Atoms	Z	Observed(°)	Ideal(°)
2	D	283	GLY	N-CA-C	10.98	124.44	110.38
1	A	85	PHE	C-N-CD	-8.79	101.26	120.60
1	B	201	THR	CA-C-N	-7.89	109.55	122.65
1	B	201	THR	C-N-CA	-7.89	109.55	122.65
1	A	85	PHE	CA-C-N	6.56	142.74	127.00
1	A	85	PHE	C-N-CA	6.56	142.74	127.00
1	A	34	GLU	N-CA-C	6.18	117.92	108.52
2	D	282	LYS	CA-C-N	-6.07	111.96	121.97
2	D	282	LYS	C-N-CA	-6.07	111.96	121.97
2	H	148	ASP	N-CA-C	5.89	123.35	110.80
1	F	205	THR	N-CA-C	5.82	123.20	110.80
1	E	85	PHE	N-CA-C	5.57	122.11	109.81
1	A	14	THR	N-CA-CB	5.43	119.87	111.24
2	C	148	ASP	N-CA-C	5.41	122.32	110.80
1	F	3	LEU	CA-CB-CG	5.36	135.06	116.30
1	A	115	LYS	CA-C-N	5.34	128.82	120.75
1	A	115	LYS	C-N-CA	5.34	128.82	120.75
1	B	127	LEU	CA-CB-CG	-5.33	97.65	116.30
2	G	283	GLY	N-CA-C	5.33	125.81	113.18
1	A	34	GLU	CB-CA-C	-5.32	101.43	109.99
2	G	240	TYR	CA-CB-CG	5.25	123.34	113.90
2	H	287	LEU	CA-CB-CG	5.05	133.99	116.30
1	B	202	ASN	O-C-N	5.04	128.82	122.37

There are no chirality outliers.

All (16) planarity outliers are listed below:

Mol	Chain	Res	Type	Group
1	A	203	VAL	Peptide
1	A	86	PRO	Peptide
1	B	196	HIS	Peptide
1	B	202	ASN	Peptide
1	B	225	LYS	Peptide
2	D	282	LYS	Peptide
2	D	6	TYR	Peptide
2	D	76	PRO	Peptide
1	E	39	GLU	Peptide
1	E	83	GLN	Peptide
1	E	84	SER	Peptide
1	E	85	PHE	Peptide
1	F	2	ASP	Peptide

*Continued on next page...*

*Continued from previous page...*

Mol	Chain	Res	Type	Group
1	F	201	THR	Peptide
2	G	34	ILE	Peptide
2	H	76	PRO	Peptide

## 5.2 Too-close contacts

In the following table, the Non-H and H(model) columns list the number of non-hydrogen atoms and hydrogen atoms in the chain respectively. The H(added) column lists the number of hydrogen atoms added and optimized by MolProbity. The Clashes column lists the number of clashes within the asymmetric unit, whereas Symm-Clashes lists symmetry-related clashes.

Mol	Chain	Non-H	H(model)	H(added)	Clashes	Symm-Clashes
1	A	1828	0	1814	175	0
1	B	1820	0	1802	138	0
1	E	1828	0	1813	148	0
1	F	1820	0	1803	147	0
2	C	2592	0	2552	125	0
2	D	2532	0	2493	133	0
2	G	2532	0	2493	128	0
2	H	2603	0	2564	114	0
3	C	31	0	21	4	0
3	D	31	0	21	1	0
3	G	31	0	21	1	0
3	H	31	0	21	5	0
4	A	7	0	0	0	0
4	B	10	0	0	0	0
4	C	23	0	0	2	0
4	D	12	0	0	2	0
4	E	3	0	0	0	0
4	F	6	0	0	1	0
4	G	11	0	0	1	0
4	H	21	0	0	2	0
All	All	17772	0	17418	1068	0

The all-atom clashscore is defined as the number of clashes found per 1000 atoms (including hydrogen atoms). The all-atom clashscore for this structure is 30.

All (1068) close contacts within the same asymmetric unit are listed below, sorted by their clash magnitude.

Atom-1	Atom-2	Interatomic distance (Å)	Clash overlap (Å)
1:E:85:PHE:CZ	1:E:89:PHE:CD2	2.23	1.25
1:A:13:PRO:HD2	1:A:115:LYS:CE	1.69	1.21
1:A:13:PRO:HD2	1:A:115:LYS:HE2	1.18	1.18
1:F:50:LYS:HD2	1:F:51:GLY:N	1.58	1.18
1:E:11:VAL:HG12	1:E:36:ASN:HA	1.17	1.15
1:A:13:PRO:HA	1:A:34:GLU:HB3	1.23	1.14
1:F:50:LYS:HD2	1:F:51:GLY:H	0.98	1.10
1:A:68:ARG:HH12	1:A:194:ILE:HG21	1.17	1.08
1:E:10:GLU:O	1:E:37:ILE:HG12	1.52	1.08
1:A:68:ARG:NH1	1:A:194:ILE:HG21	1.72	1.05
1:A:13:PRO:HB2	1:A:115:LYS:HE2	1.40	1.01
1:E:43:GLU:HB2	1:E:213:HIS:ND1	1.75	1.01
1:F:68:ARG:HE	1:F:68:ARG:HA	1.22	1.01
1:A:13:PRO:CD	1:A:115:LYS:HE2	1.92	1.00
2:C:91:SER:OG	2:C:96:ASP:OD2	1.78	0.99
1:F:11:VAL:HG12	1:F:36:ASN:HA	1.45	0.98
1:E:43:GLU:HB2	1:E:213:HIS:HD1	1.25	0.97
2:D:47:VAL:HG12	2:D:115:ILE:HB	1.47	0.96
1:B:106:LYS:HG2	1:B:121:ASP:HB3	1.47	0.95
1:B:36:ASN:HD22	1:B:39:GLU:HG2	1.33	0.94
1:E:85:PHE:HZ	1:E:89:PHE:CD2	1.84	0.94
2:D:78:LEU:HB2	2:D:81:MET:HE2	1.52	0.92
1:E:224:LYS:HA	1:E:224:LYS:NZ	1.84	0.92
2:G:39:SER:HB3	2:G:73:CYS:H	1.34	0.92
1:A:13:PRO:CB	1:A:115:LYS:HE2	2.00	0.91
1:A:68:ARG:NH2	1:A:216:ALA:HB3	1.85	0.91
1:B:125:LYS:HD3	1:B:126:ASP:H	1.32	0.91
1:E:85:PHE:CZ	1:E:89:PHE:HD2	1.88	0.90
2:G:51:HIS:HE1	2:G:81:MET:HE3	1.37	0.90
2:D:16:THR:HG22	2:D:19:GLN:HG2	1.53	0.89
1:A:13:PRO:CD	1:A:115:LYS:HG2	2.02	0.89
2:C:39:SER:HB3	2:C:73:CYS:H	1.37	0.89
1:E:224:LYS:HA	1:E:224:LYS:CE	2.03	0.88
1:A:13:PRO:HD2	1:A:115:LYS:CG	2.03	0.88
1:B:150:THR:OG1	1:B:189:PRO:O	1.90	0.87
1:A:45:LYS:HA	1:A:211:VAL:HG12	1.56	0.86
1:A:113:ASP:O	1:A:115:LYS:N	2.08	0.85
1:A:84:SER:HA	1:A:185:VAL:HG11	1.59	0.85
1:E:41:THR:HG22	1:E:215:THR:HG22	1.60	0.84
2:G:207:LYS:NZ	4:G:501:HOH:O	2.08	0.84
2:C:217:LEU:HD11	2:C:221:ARG:HH11	1.43	0.84
1:A:13:PRO:HD2	1:A:115:LYS:CD	2.07	0.83

*Continued on next page...*

*Continued from previous page...*

Atom-1	Atom-2	Interatomic distance (Å)	Clash overlap (Å)
1:E:224:LYS:HA	1:E:224:LYS:HZ3	1.43	0.83
1:A:142:GLN:OE1	1:A:170:HIS:NE2	2.11	0.83
2:D:51:HIS:NE2	2:D:81:MET:HE3	1.93	0.83
1:B:113:ASP:O	1:B:115:LYS:N	2.11	0.83
2:D:112:LYS:HA	2:D:136:ARG:HH11	1.44	0.83
1:A:13:PRO:O	1:A:70:TYR:OH	1.96	0.82
2:D:151:GLU:HG3	2:D:226:VAL:HG21	1.61	0.82
1:E:5:LYS:HG3	1:E:6:LEU:HD12	1.60	0.82
1:E:198:LEU:HD21	1:E:212:GLN:HB2	1.61	0.81
1:E:150:THR:OG1	1:E:189:PRO:O	1.99	0.80
1:A:35:GLY:HA3	1:A:41:THR:O	1.81	0.80
2:H:155:GLU:HG3	2:H:264:ASN:HD21	1.46	0.80
2:G:41:LYS:HD3	2:G:41:LYS:C	2.06	0.80
1:A:68:ARG:HH12	1:A:194:ILE:CG2	1.94	0.80
1:B:5:LYS:HB2	1:B:6:LEU:HD22	1.63	0.80
1:E:82:LEU:O	1:E:84:SER:OG	1.98	0.80
2:H:181:PHE:HA	2:H:185:VAL:HG22	1.64	0.79
1:A:13:PRO:HA	1:A:34:GLU:CB	2.10	0.79
1:E:215:THR:HG21	1:F:224:LYS:HE3	1.62	0.79
1:A:37:ILE:HG13	1:A:38:LEU:H	1.47	0.79
1:B:93:ARG:HB3	1:B:105:VAL:HB	1.65	0.79
1:A:85:PHE:HZ	1:A:89:PHE:N	1.80	0.78
1:B:23:GLY:HA2	1:B:125:LYS:HG2	1.64	0.78
2:C:130:ALA:HA	2:C:137:ILE:HD11	1.65	0.78
1:A:68:ARG:HH22	1:A:216:ALA:HB3	1.46	0.78
1:A:142:GLN:NE2	1:B:191:TYR:CD1	2.52	0.78
1:F:68:ARG:HA	1:F:68:ARG:NE	1.90	0.78
1:F:106:LYS:HG3	1:F:121:ASP:HB3	1.64	0.77
1:A:88:GLY:O	1:A:182:LYS:N	2.16	0.77
1:A:150:THR:OG1	1:A:189:PRO:O	2.03	0.77
1:E:29:MET:HE1	1:E:58:PHE:HE2	1.49	0.77
2:H:32:SER:OG	2:H:33:PHE:N	2.17	0.77
2:C:217:LEU:HD11	2:C:221:ARG:NH1	2.00	0.77
1:F:23:GLY:HA2	1:F:125:LYS:HD3	1.66	0.77
1:E:95:ILE:HB	1:E:103:ALA:HB3	1.66	0.77
1:E:145:TYR:CD1	1:E:195:GLN:HB3	2.21	0.76
1:E:145:TYR:CE1	1:E:195:GLN:HB3	2.19	0.76
2:C:251:PRO:HB3	2:C:314:LEU:HD11	1.67	0.76
1:A:95:ILE:HB	1:A:103:ALA:HB3	1.66	0.76
1:F:131:GLY:O	1:F:133:VAL:N	2.19	0.76
1:F:169:LYS:HE2	2:G:158:ASP:OD2	1.86	0.76

*Continued on next page...*



*Continued from previous page...*

Atom-1	Atom-2	Interatomic distance (Å)	Clash overlap (Å)
1:A:68:ARG:O	1:A:71:THR:OG1	2.04	0.76
1:A:13:PRO:CD	1:A:115:LYS:CG	2.63	0.76
2:H:39:SER:HB3	2:H:73:CYS:H	1.51	0.76
1:E:93:ARG:HB3	1:E:105:VAL:HG13	1.67	0.76
2:H:2:THR:OG1	2:H:3:SER:N	2.15	0.75
1:E:41:THR:HB	1:E:213:HIS:NE2	2.01	0.75
2:H:155:GLU:HG3	2:H:264:ASN:ND2	2.01	0.75
1:E:11:VAL:CG1	1:E:36:ASN:HA	2.09	0.74
1:F:195:GLN:HB3	1:F:217:ILE:HG12	1.68	0.74
1:E:160:ILE:HD12	1:F:158:GLU:HB3	1.68	0.74
2:D:93:ARG:NH2	2:D:232:ASP:OD2	2.21	0.74
1:E:195:GLN:HG2	1:E:217:ILE:HB	1.69	0.73
1:E:85:PHE:CE1	1:E:89:PHE:HD2	2.07	0.73
1:E:85:PHE:CE1	1:E:89:PHE:CD2	2.76	0.73
1:E:203:VAL:HG12	1:F:230:LEU:HG	1.70	0.73
1:F:200:LYS:NZ	2:G:3:SER:OG	2.22	0.72
1:F:64:ALA:HB1	1:F:120:VAL:HG11	1.71	0.72
2:H:175:VAL:HG21	2:H:217:LEU:HD23	1.70	0.72
1:F:229:SER:C	1:F:231:PRO:OXT	2.33	0.72
2:G:191:MET:SD	2:G:283:GLY:HA2	2.30	0.72
2:G:105:PHE:HA	2:G:108:LEU:HD12	1.71	0.72
2:D:250:LEU:O	2:D:252:LYS:NZ	2.23	0.72
1:A:33:GLY:HA3	1:A:44:VAL:HA	1.72	0.71
1:A:3:LEU:HD11	1:A:37:ILE:HD13	1.72	0.71
1:E:29:MET:HE1	1:E:58:PHE:CE2	2.24	0.71
1:A:68:ARG:HH22	1:A:71:THR:HG23	1.55	0.71
2:C:175:VAL:HG11	2:C:217:LEU:HB2	1.71	0.71
1:F:125:LYS:HD2	1:F:126:ASP:H	1.55	0.71
1:B:42:GLN:NE2	1:B:66:CRO:OG1	2.24	0.71
1:E:93:ARG:HG3	1:E:177:THR:HG22	1.72	0.71
2:D:32:SER:OG	2:D:33:PHE:N	2.24	0.70
2:G:15:ILE:HA	2:G:19:GLN:HE21	1.55	0.70
1:A:12:MET:HB2	1:A:115:LYS:HB3	1.72	0.70
2:H:91:SER:OG	2:H:96:ASP:OD2	2.09	0.70
2:G:79:ILE:HD13	2:G:100:TYR:CD2	2.27	0.70
2:H:44:GLU:OE2	2:H:44:GLU:N	2.20	0.70
2:G:41:LYS:HD3	2:G:42:HIS:N	2.07	0.70
1:A:127:LEU:H	1:A:127:LEU:HD12	1.57	0.70
1:E:6:LEU:HD23	1:E:85:PHE:H	1.56	0.69
1:E:68:ARG:CZ	1:E:68:ARG:HA	2.22	0.69
1:A:198:LEU:HD11	1:A:212:GLN:HB2	1.72	0.69

*Continued on next page...*

*Continued from previous page...*

Atom-1	Atom-2	Interatomic distance (Å)	Clash overlap (Å)
2:H:41:LYS:O	2:H:42:HIS:ND1	2.25	0.69
1:E:21:LEU:HB3	1:E:123:LYS:HG2	1.73	0.69
1:A:204:ASP:OD1	1:A:206:ALA:N	2.26	0.69
1:E:11:VAL:HG12	1:E:36:ASN:CA	2.11	0.69
1:E:68:ARG:O	1:E:71:THR:OG1	2.07	0.69
2:G:41:LYS:O	2:G:43:ALA:N	2.26	0.69
2:H:4:LYS:HG2	2:H:191:MET:O	1.93	0.68
2:H:163:ILE:HD11	3:H:401:CEI:H5	1.75	0.68
2:C:4:LYS:HG2	2:C:191:MET:O	1.94	0.68
2:H:175:VAL:HG11	2:H:217:LEU:HB2	1.74	0.68
1:B:203:VAL:HG13	1:B:204:ASP:H	1.58	0.68
2:C:117:VAL:HG22	2:C:141:VAL:HB	1.75	0.68
1:E:223:ILE:HD13	1:F:215:THR:HB	1.74	0.68
2:D:52:GLY:HA3	2:D:120:ASP:HB3	1.76	0.68
2:G:47:VAL:HG22	2:G:115:ILE:HB	1.74	0.68
2:C:62:HIS:HE1	4:C:507:HOH:O	1.76	0.68
1:E:221:SER:O	1:E:222:THR:OG1	2.12	0.68
2:H:36:TYR:OH	4:H:501:HOH:O	2.11	0.68
2:D:144:GLU:OE2	2:D:263:SER:OG	2.11	0.67
2:G:64:VAL:HG21	2:G:75:ILE:HD11	1.76	0.67
1:E:79:ASP:HB3	1:E:82:LEU:HB2	1.76	0.67
1:A:145:TYR:CD1	1:A:195:GLN:HB2	2.30	0.67
2:C:120:ASP:OD1	2:C:121:TRP:N	2.28	0.67
1:A:195:GLN:HE21	1:B:223:ILE:HG13	1.59	0.67
1:B:206:ALA:O	2:D:6:TYR:OH	2.10	0.67
2:D:149:VAL:HG22	2:D:237:VAL:HG13	1.76	0.67
1:F:201:THR:OG1	1:F:211:VAL:HB	1.94	0.67
2:G:112:LYS:HA	2:G:136:ARG:HH21	1.59	0.67
2:D:78:LEU:HB2	2:D:81:MET:CE	2.25	0.67
1:B:92:GLU:HB2	1:B:178:VAL:HG12	1.76	0.67
1:B:64:ALA:HB1	1:B:120:VAL:HG11	1.77	0.66
1:F:148:MET:HE2	1:F:194:ILE:HD12	1.76	0.66
1:A:36:ASN:HB3	1:A:39:GLU:OE2	1.95	0.66
2:C:14:MET:HE3	2:C:195:GLU:HB2	1.77	0.66
2:C:14:MET:HE1	2:C:197:GLU:HB2	1.77	0.66
1:E:226:ILE:O	1:E:226:ILE:HG13	1.95	0.66
2:G:51:HIS:CE1	2:G:81:MET:HE3	2.25	0.66
1:E:129:ARG:HH11	2:H:264:ASN:HB2	1.61	0.66
1:F:50:LYS:CD	1:F:51:GLY:N	2.48	0.66
2:G:16:THR:HG22	2:G:19:GLN:HG2	1.78	0.65
1:F:151:ASN:O	1:F:152:VAL:HG12	1.96	0.65

*Continued on next page...*

*Continued from previous page...*

Atom-1	Atom-2	Interatomic distance (Å)	Clash overlap (Å)
1:A:46:ILE:HG12	1:A:65:PHE:CD1	2.31	0.65
1:B:108:ASP:OD2	1:B:110:SER:OG	2.14	0.65
2:D:64:VAL:HG21	2:D:75:ILE:HD11	1.78	0.65
1:B:205:THR:HB	1:B:207:SER:H	1.62	0.65
1:A:67:ASN:ND2	1:A:109:ILE:HG12	2.12	0.65
2:G:41:LYS:HD3	2:G:42:HIS:HA	1.79	0.65
2:G:48:ILE:HD12	2:G:114:ILE:HG21	1.78	0.64
1:B:13:PRO:O	1:B:115:LYS:HB2	1.97	0.64
1:B:178:VAL:HG13	1:B:178:VAL:O	1.97	0.64
2:C:37:TYR:HD2	2:C:75:ILE:HD12	1.62	0.64
2:C:263:SER:O	2:C:267:VAL:HG23	1.97	0.64
2:G:6:TYR:HE1	2:G:193:LYS:HD3	1.62	0.64
2:D:153:TRP:NE1	2:D:160:GLU:OE1	2.30	0.64
1:E:42:GLN:O	1:E:213:HIS:HA	1.98	0.64
1:E:45:LYS:HA	1:E:211:VAL:HG22	1.78	0.64
1:A:77:ILE:HG21	1:A:192:HIS:CD2	2.33	0.64
2:H:16:THR:OG1	2:H:19:GLN:OE1	2.12	0.64
1:B:127:LEU:HD13	1:B:133:VAL:HG11	1.79	0.64
1:A:13:PRO:HB2	1:A:115:LYS:CE	2.22	0.63
1:A:200:LYS:HA	1:A:212:GLN:HA	1.80	0.63
1:B:12:MET:HE3	1:B:115:LYS:HA	1.80	0.63
1:B:143:PRO:HB3	1:B:197:ARG:HG3	1.79	0.63
1:F:92:GLU:HB2	1:F:178:VAL:HG12	1.80	0.63
2:G:61:ARG:O	2:G:65:PRO:HD3	1.98	0.63
2:G:112:LYS:HA	2:G:136:ARG:NH2	2.12	0.63
1:B:79:ASP:O	1:B:83:GLN:NE2	2.32	0.63
2:D:187:PRO:HA	2:D:190:ILE:HD12	1.80	0.63
1:B:68:ARG:NH2	1:B:214:GLU:OE2	2.31	0.63
1:F:83:GLN:HG3	1:F:185:VAL:HG22	1.81	0.63
2:D:223:ILE:HD12	3:D:401:CEI:H12	1.80	0.62
2:G:160:GLU:O	2:G:162:ASP:N	2.31	0.62
2:C:120:ASP:HA	3:C:401:CEI:H16	1.81	0.62
1:E:203:VAL:CG1	1:F:230:LEU:HG	2.29	0.62
1:E:230:LEU:HD23	1:F:203:VAL:HG11	1.79	0.62
1:F:57:ALA:HB2	1:F:136:GLN:HA	1.81	0.62
1:A:224:LYS:CD	1:A:225:LYS:H	2.12	0.62
2:C:32:SER:OG	2:C:33:PHE:N	2.30	0.62
2:C:168:SER:O	2:C:170:GLU:N	2.32	0.62
2:D:42:HIS:O	2:D:72:ARG:N	2.32	0.62
1:A:154:SER:HB3	1:A:180:LYS:HG2	1.81	0.62
2:D:244:LEU:O	2:D:247:SER:OG	2.17	0.62

*Continued on next page...*

*Continued from previous page...*

Atom-1	Atom-2	Interatomic distance (Å)	Clash overlap (Å)
1:E:230:LEU:CD2	1:F:203:VAL:HG11	2.29	0.62
2:H:80:GLY:HA3	2:H:92:TYR:CE2	2.35	0.62
2:D:145:SER:HB2	2:D:147:VAL:HG23	1.82	0.62
1:A:85:PHE:CZ	1:A:89:PHE:CD2	2.87	0.62
1:E:132:PRO:HG2	1:E:171:PHE:CD1	2.35	0.62
2:D:154:ASP:C	2:D:156:TRP:H	2.07	0.61
1:E:92:GLU:OE2	1:E:106:LYS:HD3	1.99	0.61
1:E:224:LYS:HZ3	1:E:224:LYS:CA	2.11	0.61
1:F:202:ASN:OD1	1:F:205:THR:HG21	1.99	0.61
2:H:167:LYS:NZ	2:H:228:GLY:O	2.30	0.61
1:B:93:ARG:HD3	1:B:175:MET:SD	2.40	0.61
2:D:51:HIS:CE1	2:D:78:LEU:H	2.19	0.61
2:G:41:LYS:HD3	2:G:42:HIS:CA	2.31	0.61
2:H:11:ARG:NH1	2:H:197:GLU:OE1	2.23	0.61
2:D:287:LEU:HD23	2:D:287:LEU:H	1.64	0.61
2:D:176:LEU:HD11	2:D:214:ARG:NH2	2.15	0.61
2:D:211[A]:GLU:HG3	2:D:214:ARG:HE	1.66	0.61
1:B:92:GLU:HB2	1:B:178:VAL:CG1	2.30	0.61
2:D:246:ALA:O	2:D:248:ASP:N	2.33	0.61
2:G:32:SER:OG	2:G:33:PHE:N	2.33	0.61
2:D:211[B]:GLU:HG2	2:D:214:ARG:HB2	1.83	0.60
1:E:156:ILE:HD12	1:E:178:VAL:HG12	1.82	0.60
2:H:165:LEU:HB3	2:H:174:MET:HE1	1.82	0.60
2:C:138:LYS:HE2	2:C:309:ASN:HD21	1.66	0.60
1:E:160:ILE:HD13	1:F:158:GLU:OE2	2.01	0.60
2:H:93:ARG:HH21	2:H:230:LYS:HD3	1.65	0.60
1:A:32:VAL:O	1:A:45:LYS:N	2.31	0.60
1:B:18:LEU:HD23	1:B:19:GLU:N	2.16	0.60
2:H:131:TYR:CE2	2:H:239:ASN:HB3	2.37	0.60
2:C:130:ALA:HA	2:C:137:ILE:CD1	2.31	0.60
2:C:206:PHE:HB3	2:C:213:ARG:HG2	1.82	0.60
2:D:289:GLU:OE2	2:D:289:GLU:HA	2.01	0.60
1:F:200:LYS:HA	1:F:212:GLN:HA	1.83	0.60
2:H:153:TRP:CZ2	2:H:225:LEU:HD11	2.37	0.60
1:A:13:PRO:CG	1:A:115:LYS:HE2	2.31	0.60
1:A:229:SER:HB2	1:B:200:LYS:O	2.01	0.60
2:C:160:GLU:O	2:C:162:ASP:N	2.34	0.60
1:F:37:ILE:HD11	1:F:69:ALA:HB1	1.82	0.60
1:E:66:CRO:HE1	1:E:161:ILE:HD11	1.83	0.60
1:A:66:CRO:HD2	1:A:214:GLU:OE2	2.01	0.60
2:G:232:ASP:O	2:G:236:ILE:HG13	2.01	0.59

*Continued on next page...*

*Continued from previous page...*

Atom-1	Atom-2	Interatomic distance (Å)	Clash overlap (Å)
2:C:261:PHE:HB2	2:C:285:HIS:HB2	1.83	0.59
1:B:3:LEU:HA	1:B:5:LYS:HE2	1.83	0.59
1:F:229:SER:O	1:F:231:PRO:OXT	2.20	0.59
1:A:107:SER:OG	1:A:108:ASP:N	2.35	0.59
1:A:115:LYS:HD2	1:A:115:LYS:C	2.27	0.59
1:B:202:ASN:HB2	1:B:211:VAL:HG22	1.82	0.59
2:G:27:MET:HG3	2:G:36:TYR:HE1	1.66	0.59
2:H:176:LEU:HD11	2:H:214:ARG:HH21	1.66	0.59
1:E:6:LEU:CD2	1:E:85:PHE:H	2.14	0.59
1:A:79:ASP:O	1:A:83:GLN:HG3	2.03	0.59
1:A:159:CYS:O	1:A:160:ILE:HD13	2.01	0.59
2:C:80:GLY:HA3	2:C:92:TYR:CE1	2.37	0.59
1:F:225:LYS:H	1:F:225:LYS:HD2	1.68	0.59
2:G:176:LEU:O	2:G:213:ARG:NH1	2.31	0.59
2:G:78:LEU:HB2	2:G:81:MET:HE2	1.85	0.58
1:A:82:LEU:C	1:A:84:SER:H	2.11	0.58
1:F:32:VAL:C	1:F:44:VAL:HG23	2.28	0.58
1:F:42:GLN:O	1:F:213:HIS:ND1	2.37	0.58
1:B:146:GLU:HG3	1:B:159:CYS:HB2	1.84	0.58
1:E:68:ARG:HD2	1:E:196:HIS:HE1	1.67	0.58
2:H:191:MET:HE3	2:H:283:GLY:CA	2.33	0.58
1:A:204:ASP:OD1	1:A:205:THR:N	2.36	0.58
2:C:10:GLN:NE2	2:C:198:GLU:OE2	2.37	0.58
1:E:85:PHE:CZ	1:E:89:PHE:CE2	2.89	0.58
2:G:79:ILE:HG13	2:G:85:GLY:O	2.03	0.58
1:B:36:ASN:HB3	1:B:39:GLU:HB2	1.84	0.58
1:B:146:GLU:OE2	1:B:179:TYR:OH	2.21	0.58
2:D:39:SER:HG	2:D:73:CYS:H	1.49	0.58
1:F:2:ASP:O	1:F:5:LYS:HD3	2.04	0.58
1:A:204:ASP:OD1	1:A:206:ALA:HB2	2.03	0.58
1:F:63:VAL:HG12	1:F:66:CRO:CD2	2.34	0.58
2:D:53:ASN:OD1	2:D:54:ALA:N	2.37	0.58
2:H:77:ASP:OD2	2:H:82:GLY:HA3	2.04	0.58
2:H:288:GLN:HG3	2:H:295:MET:HE1	1.85	0.58
1:A:95:ILE:HG23	1:A:173:TYR:CD2	2.39	0.57
2:G:204:GLU:HB3	2:G:205:PRO:HD3	1.87	0.57
1:A:95:ILE:HG12	1:A:173:TYR:CE2	2.39	0.57
1:B:16:ILE:HG23	1:B:118:VAL:HG21	1.85	0.57
1:B:83:GLN:HB2	1:B:185:VAL:HG13	1.86	0.57
2:C:175:VAL:HG21	2:C:217:LEU:HD23	1.84	0.57
1:A:158:GLU:HG3	1:A:176:ARG:HG3	1.86	0.57

*Continued on next page...*

*Continued from previous page...*

Atom-1	Atom-2	Interatomic distance (Å)	Clash overlap (Å)
2:G:246:ALA:O	2:G:248:ASP:N	2.35	0.57
1:E:42:GLN:H	1:E:213:HIS:CD2	2.22	0.57
1:E:230:LEU:N	1:E:231:PRO:OXT	2.36	0.57
2:C:138:LYS:HE2	2:C:309:ASN:ND2	2.20	0.57
2:D:154:ASP:O	2:D:156:TRP:N	2.37	0.57
2:G:153:TRP:CZ2	2:G:160:GLU:HG3	2.40	0.57
1:B:68:ARG:O	1:B:71:THR:HG22	2.05	0.57
1:F:37:ILE:HD13	1:F:116:PHE:HE2	1.69	0.57
2:D:21:TRP:CD2	2:D:83:LYS:HE2	2.40	0.57
1:E:105:VAL:HA	1:E:121:ASP:O	2.04	0.57
1:B:43:GLU:HB2	1:B:213:HIS:ND1	2.20	0.57
1:B:59:ASP:OD2	1:B:140:GLY:HA2	2.04	0.57
2:D:191:MET:SD	2:D:283:GLY:HA2	2.44	0.57
2:H:244:LEU:O	2:H:247:SER:OG	2.23	0.57
1:A:27:PHE:H	1:A:27:PHE:HD1	1.53	0.57
2:C:175:VAL:CG2	2:C:217:LEU:HD23	2.35	0.57
1:F:5:LYS:H	1:F:5:LYS:CD	2.17	0.57
2:G:217:LEU:HD11	2:G:221:ARG:CZ	2.35	0.57
1:B:227:GLU:HA	1:B:227:GLU:OE2	2.03	0.56
2:G:303:VAL:HA	2:G:306:VAL:HG22	1.86	0.56
2:H:190:ILE:HG12	2:H:286:PHE:HB2	1.87	0.56
1:A:37:ILE:HG13	1:A:38:LEU:N	2.18	0.56
1:A:85:PHE:CE2	1:A:89:PHE:CD2	2.93	0.56
1:A:95:ILE:HG21	1:A:97:TYR:CZ	2.41	0.56
1:B:48:VAL:HB	2:D:5:VAL:HG21	1.88	0.56
1:B:183:LYS:O	1:B:185:VAL:HG23	2.04	0.56
1:F:28:SER:O	1:F:49:THR:OG1	2.18	0.56
2:G:41:LYS:CD	2:G:42:HIS:N	2.69	0.56
1:A:197:ARG:O	1:A:197:ARG:HG3	2.05	0.56
2:D:4:LYS:HE2	2:D:190:ILE:O	2.06	0.56
1:A:13:PRO:N	1:A:115:LYS:HG2	2.20	0.56
1:E:79:ASP:OD2	1:E:82:LEU:HD22	2.05	0.56
1:F:226:ILE:HD12	1:F:226:ILE:H	1.71	0.56
1:B:91:TYR:HE1	1:B:105:VAL:HG12	1.70	0.56
1:E:47:SER:OG	1:E:209:TYR:HB3	2.05	0.56
1:A:3:LEU:CD1	1:A:37:ILE:HD13	2.35	0.56
2:C:288:GLN:HG3	2:C:295:MET:HE1	1.88	0.56
2:H:4:LYS:HE2	2:H:190:ILE:O	2.05	0.56
2:D:51:HIS:HE1	2:D:78:LEU:H	1.52	0.55
2:D:112:LYS:HA	2:D:136:ARG:NH1	2.19	0.55
2:G:233:VAL:O	2:G:237:VAL:HG12	2.07	0.55

*Continued on next page...*

*Continued from previous page...*

Atom-1	Atom-2	Interatomic distance (Å)	Clash overlap (Å)
2:H:117:VAL:HG22	2:H:141:VAL:HB	1.88	0.55
1:B:198:LEU:HD12	1:B:214:GLU:HB2	1.88	0.55
2:C:55:THR:HG22	2:C:202:TYR:HE1	1.71	0.55
1:F:198:LEU:HD13	1:F:214:GLU:HB2	1.87	0.55
2:G:55:THR:HG22	2:G:202:TYR:CE1	2.41	0.55
1:A:85:PHE:CZ	1:A:89:PHE:N	2.70	0.55
2:D:282:LYS:HB2	2:D:291:ALA:HB2	1.88	0.55
2:G:156:TRP:CD1	2:G:265:ALA:HB1	2.41	0.55
1:B:91:TYR:CZ	1:B:107:SER:HB3	2.41	0.55
2:G:6:TYR:CE1	2:G:193:LYS:HD3	2.42	0.55
1:A:81:PHE:O	1:A:84:SER:HB3	2.06	0.55
1:B:27:PHE:HD2	1:B:29:MET:HG3	1.71	0.55
2:C:141:VAL:HG13	2:C:253:LEU:HD23	1.89	0.55
1:F:75:GLU:HA	1:F:75:GLU:OE2	2.06	0.55
2:G:175:VAL:HG21	2:G:217:LEU:HB2	1.88	0.55
2:H:271:LYS:HG2	2:H:278:PHE:CZ	2.42	0.55
1:B:66:CRO:HD2	1:B:66:CRO:N2	2.22	0.55
2:G:155:GLU:O	2:G:265:ALA:HB2	2.07	0.55
2:H:52:GLY:HA3	2:H:120:ASP:HB3	1.89	0.55
2:C:120:ASP:OD1	3:C:401:CEI:H101	2.07	0.55
2:D:61:ARG:O	2:D:65:PRO:HD3	2.06	0.55
2:D:104:TRP:CE2	2:D:108:LEU:HD11	2.41	0.55
1:E:30:GLU:O	1:E:46:ILE:HA	2.07	0.55
2:H:172:GLU:OE2	2:H:214:ARG:NH2	2.39	0.55
2:C:37:TYR:CD2	2:C:75:ILE:HD12	2.41	0.55
1:F:7:GLY:O	1:F:8:LEU:HD23	2.07	0.55
1:F:79:ASP:CG	1:F:82:LEU:HG	2.32	0.55
2:H:39:SER:HB2	2:H:68:GLU:HG2	1.88	0.55
1:A:89:PHE:CE1	1:A:109:ILE:HD13	2.42	0.55
2:D:9:GLU:HA	2:D:9:GLU:OE2	2.06	0.55
1:A:12:MET:HB2	1:A:115:LYS:CB	2.38	0.54
1:B:18:LEU:HD23	1:B:19:GLU:C	2.32	0.54
1:E:143:PRO:HB3	1:E:197:ARG:HG3	1.89	0.54
1:A:160:ILE:HG21	1:B:158:GLU:OE2	2.05	0.54
2:C:29:VAL:HG21	2:C:34:ILE:HG12	1.88	0.54
2:C:14:MET:CE	2:C:197:GLU:HB2	2.37	0.54
1:E:36:ASN:ND2	1:E:39:GLU:HG2	2.21	0.54
1:E:158:GLU:HB3	1:F:160:ILE:HG21	1.90	0.54
1:F:165:LEU:HD21	1:F:171:PHE:HB2	1.90	0.54
2:D:77:ASP:OD2	2:D:82:GLY:HA3	2.07	0.54
2:G:149:VAL:C	2:G:150:ILE:HD13	2.32	0.54

*Continued on next page...*



*Continued from previous page...*

Atom-1	Atom-2	Interatomic distance (Å)	Clash overlap (Å)
2:G:149:VAL:HG12	2:G:237:VAL:HG13	1.89	0.54
2:C:55:THR:HG22	2:C:202:TYR:CE1	2.43	0.54
2:H:38:ASP:OD2	2:H:72:ARG:NH2	2.34	0.54
1:A:10:GLU:O	1:A:12:MET:HG2	2.07	0.54
1:E:33:GLY:HA3	1:E:43:GLU:O	2.08	0.54
2:H:204:GLU:HB3	2:H:205:PRO:HD3	1.90	0.54
1:B:16:ILE:HA	1:B:118:VAL:CG2	2.38	0.54
2:H:160:GLU:O	2:H:162:ASP:N	2.40	0.54
1:A:45:LYS:HA	1:A:211:VAL:CG1	2.32	0.54
2:C:167:LYS:NZ	2:C:228:GLY:O	2.40	0.54
2:C:184:THR:O	2:C:187:PRO:HD2	2.08	0.54
2:D:303:VAL:O	2:D:306:VAL:HG12	2.08	0.54
1:F:128:ARG:CZ	1:F:130:MET:HB2	2.38	0.54
2:H:252:LYS:HB2	2:H:276:THR:HG23	1.89	0.54
1:A:62:SER:HB2	1:A:212:GLN:OE1	2.08	0.53
1:A:197:ARG:NH2	1:B:224:LYS:HD3	2.23	0.53
1:E:85:PHE:HE1	1:E:89:PHE:HB3	1.72	0.53
1:F:37:ILE:HG23	1:F:38:LEU:HD23	1.90	0.53
1:F:146:GLU:HG3	1:F:159:CYS:HB3	1.89	0.53
1:F:203:VAL:O	1:F:205:THR:HG23	2.09	0.53
2:G:41:LYS:HD2	2:G:42:HIS:CG	2.42	0.53
2:G:16:THR:HG22	2:G:19:GLN:CG	2.38	0.53
2:G:41:LYS:HD2	2:G:42:HIS:CD2	2.43	0.53
2:G:308:LYS:HB2	2:G:308:LYS:NZ	2.22	0.53
2:D:31:ASP:OD1	2:D:31:ASP:N	2.40	0.53
1:A:66:CRO:O2	1:A:93:ARG:NH2	2.42	0.53
1:A:82:LEU:O	1:A:84:SER:N	2.42	0.53
1:B:7:GLY:O	1:B:8:LEU:HD12	2.08	0.53
2:D:80:GLY:HA3	2:D:92:TYR:HE2	1.73	0.53
1:F:125:LYS:HD2	1:F:126:ASP:N	2.23	0.53
1:F:125:LYS:CD	1:F:126:ASP:H	2.21	0.53
2:H:64:VAL:HG13	2:H:65:PRO:HD3	1.91	0.53
1:A:15:LYS:HD2	1:A:31:GLY:O	2.09	0.53
1:F:148:MET:HE1	1:F:179:TYR:CE2	2.43	0.53
1:A:67:ASN:HD21	1:A:109:ILE:HG21	1.74	0.53
1:F:178:VAL:O	1:F:178:VAL:HG13	2.09	0.53
1:B:16:ILE:HA	1:B:118:VAL:HG22	1.90	0.53
1:B:80:TYR:OH	1:B:181:SER:N	2.32	0.53
1:A:132:PRO:HB3	1:A:165:LEU:HD21	1.91	0.53
1:A:146:GLU:HA	1:A:159:CYS:HB3	1.90	0.53
2:G:252:LYS:HE2	2:G:273:PHE:HB3	1.90	0.53

*Continued on next page...*



*Continued from previous page...*

Atom-1	Atom-2	Interatomic distance (Å)	Clash overlap (Å)
1:A:32:VAL:N	1:A:44:VAL:HG23	2.24	0.53
1:F:30:GLU:OE2	1:F:32:VAL:HG13	2.10	0.53
1:A:148:MET:HG3	1:A:194:ILE:HD12	1.91	0.52
1:A:206:ALA:O	2:C:6:TYR:OH	2.21	0.52
2:C:11:ARG:HB2	2:C:195:GLU:OE2	2.10	0.52
2:D:105:PHE:HA	2:D:108:LEU:HD12	1.90	0.52
1:A:42:GLN:O	1:A:213:HIS:ND1	2.42	0.52
1:B:9:LYS:HG3	1:B:11:VAL:O	2.09	0.52
2:G:241:ASN:OD1	2:G:245:ARG:HD2	2.08	0.52
2:D:153:TRP:O	2:D:156:TRP:HB2	2.09	0.52
1:F:16:ILE:HA	1:F:118:VAL:HG13	1.91	0.52
1:B:107:SER:HB2	1:B:120:VAL:HA	1.92	0.52
2:C:190:ILE:HG12	2:C:286:PHE:HB2	1.91	0.52
2:D:91:SER:OG	2:D:96:ASP:OD2	2.17	0.52
2:D:119:HIS:CD2	2:D:288:GLN:HE22	2.28	0.52
1:F:152:VAL:HG13	1:F:153:THR:N	2.24	0.52
2:H:167:LYS:NZ	2:H:229:GLY:HA2	2.25	0.52
2:H:217:LEU:HD11	2:H:221:ARG:HH21	1.75	0.52
1:B:45:LYS:HA	1:B:211:VAL:HG12	1.92	0.52
2:D:127:PHE:CD1	2:D:244:LEU:HD11	2.45	0.52
1:F:14:THR:HB	1:F:116:PHE:HB2	1.92	0.52
1:E:93:ARG:HB3	1:E:105:VAL:CG1	2.39	0.52
1:A:68:ARG:NH2	1:A:71:THR:HG23	2.23	0.52
1:A:132:PRO:HG2	1:A:171:PHE:CD1	2.45	0.52
2:G:119:HIS:CG	2:G:288:GLN:HE22	2.28	0.52
1:F:2:ASP:OD1	1:F:3:LEU:HB2	2.09	0.52
1:F:11:VAL:HG12	1:F:36:ASN:CA	2.28	0.52
2:H:66:HIS:O	2:H:300:LYS:HD2	2.09	0.52
2:H:145:SER:OG	2:H:147:VAL:HG23	2.09	0.52
1:E:138:ILE:HG12	1:E:163:PHE:HB3	1.91	0.52
1:F:16:ILE:HG22	1:F:17:ASN:H	1.75	0.52
2:G:176:LEU:HD22	2:G:210:GLY:O	2.10	0.52
1:B:135:GLN:HB3	1:B:137:ASP:OD1	2.11	0.51
2:D:232:ASP:O	2:D:236:ILE:HG13	2.11	0.51
2:G:192:ARG:NH2	2:G:193:LYS:O	2.43	0.51
2:H:93:ARG:H	2:H:96:ASP:HB2	1.74	0.51
2:D:150:ILE:HD12	2:D:156:TRP:CZ2	2.44	0.51
1:E:63:VAL:C	1:E:65:PHE:H	2.18	0.51
1:E:222:THR:O	1:E:224:LYS:HD2	2.11	0.51
2:G:253:LEU:HD13	2:G:302:PHE:HB2	1.93	0.51
2:G:289:GLU:OE2	2:G:289:GLU:HA	2.09	0.51

*Continued on next page...*

*Continued from previous page...*

Atom-1	Atom-2	Interatomic distance (Å)	Clash overlap (Å)
1:E:205:THR:HB	2:H:193:LYS:NZ	2.26	0.51
2:H:189:LYS:HE2	2:H:261:PHE:CE1	2.46	0.51
1:B:59:ASP:OD1	1:B:59:ASP:N	2.43	0.51
1:E:64:ALA:HB1	1:E:120:VAL:HG11	1.91	0.51
2:H:37:TYR:HD2	2:H:75:ILE:HD12	1.75	0.51
1:F:27:PHE:HD2	1:F:29:MET:HG3	1.74	0.51
2:H:16:THR:HG22	2:H:18:PRO:HD2	1.92	0.51
2:H:232:ASP:O	2:H:236:ILE:HG13	2.10	0.51
1:A:10:GLU:HA	1:A:37:ILE:HG21	1.93	0.51
1:A:81:PHE:HZ	1:A:148:MET:HE2	1.75	0.51
2:C:64:VAL:O	2:C:66:HIS:N	2.44	0.51
2:D:47:VAL:HA	2:D:115:ILE:O	2.11	0.51
1:E:12:MET:HG3	1:E:116:PHE:CE2	2.46	0.51
2:G:41:LYS:CD	2:G:42:HIS:HA	2.41	0.51
2:G:206:PHE:HB3	2:G:213:ARG:HG2	1.91	0.51
2:H:245:ARG:NH1	2:H:272:LYS:HD2	2.26	0.51
1:A:195:GLN:HE22	1:B:222:THR:H	1.58	0.51
2:D:51:HIS:HE1	2:D:77:ASP:HA	1.76	0.51
2:H:138:LYS:NZ	2:H:310:GLU:OE2	2.43	0.51
1:B:64:ALA:O	1:B:120:VAL:HG21	2.11	0.51
1:B:93:ARG:CB	1:B:105:VAL:HB	2.38	0.51
2:C:6:TYR:HD1	2:C:193:LYS:HB3	1.75	0.51
1:E:79:ASP:CB	1:E:82:LEU:HB2	2.40	0.51
2:G:153:TRP:O	2:G:156:TRP:HD1	1.94	0.51
2:D:44:GLU:OE2	2:D:44:GLU:N	2.44	0.51
2:G:39:SER:HB2	2:G:68:GLU:HG2	1.92	0.51
2:C:57:SER:HB2	2:C:75:ILE:HG22	1.93	0.50
2:D:176:LEU:O	2:D:213:ARG:NH1	2.36	0.50
1:F:37:ILE:HD13	1:F:116:PHE:CE2	2.45	0.50
2:H:174:MET:HA	2:H:178:ASN:HB2	1.93	0.50
2:H:217:LEU:HD11	2:H:221:ARG:NH2	2.26	0.50
1:A:89:PHE:HA	1:A:181:SER:HA	1.93	0.50
1:E:79:ASP:O	1:E:83:GLN:HG2	2.12	0.50
1:F:92:GLU:HB2	1:F:178:VAL:CG1	2.41	0.50
2:G:27:MET:HE1	2:G:107:LEU:HB3	1.94	0.50
2:D:204:GLU:OE1	4:D:501:HOH:O	2.19	0.50
1:A:142:GLN:NE2	1:B:191:TYR:CG	2.79	0.50
2:C:78:LEU:HD21	2:C:125:LEU:CD1	2.41	0.50
1:E:1:MET:O	1:E:3:LEU:HD22	2.11	0.50
1:F:128:ARG:NH2	1:F:130:MET:HB2	2.27	0.50
1:F:206:ALA:HA	2:G:6:TYR:OH	2.11	0.50

*Continued on next page...*

*Continued from previous page...*

Atom-1	Atom-2	Interatomic distance (Å)	Clash overlap (Å)
2:G:232:ASP:OD1	2:G:232:ASP:N	2.45	0.50
1:A:198:LEU:HD12	1:A:199:VAL:N	2.27	0.50
1:B:23:GLY:HA2	1:B:125:LYS:CG	2.38	0.50
2:D:179:ASN:OD1	2:D:182:VAL:HB	2.11	0.50
1:E:183:LYS:O	1:E:185:VAL:HG13	2.11	0.50
1:E:224:LYS:HZ3	1:E:224:LYS:CB	2.23	0.50
1:B:39:GLU:OE2	1:B:39:GLU:HA	2.12	0.50
2:C:101:LEU:O	2:C:101:LEU:HG	2.09	0.50
2:C:160:GLU:O	2:C:161:GLU:HB3	2.10	0.50
1:E:122:PHE:O	1:E:123:LYS:HG3	2.12	0.50
2:D:31:ASP:OD2	2:D:88:GLY:HA3	2.12	0.50
2:D:39:SER:HB3	2:D:68:GLU:HG2	1.92	0.50
1:F:91:TYR:HE1	1:F:105:VAL:HG12	1.77	0.50
1:F:143:PRO:HB3	1:F:197:ARG:HG3	1.93	0.50
2:H:113:LYS:HB3	2:H:138:LYS:HB2	1.93	0.50
1:A:110:SER:O	1:A:116:PHE:HA	2.12	0.49
1:B:91:TYR:CE1	1:B:107:SER:HB3	2.47	0.49
1:B:205:THR:OG1	1:B:207:SER:OG	2.16	0.49
2:C:252:LYS:HB2	2:C:276:THR:HG23	1.94	0.49
2:G:37:TYR:HD2	2:G:75:ILE:HD12	1.77	0.49
2:C:223:ILE:CD1	3:C:401:CEI:H12	2.42	0.49
1:F:146:GLU:HA	1:F:159:CYS:HB3	1.94	0.49
2:C:251:PRO:CB	2:C:314:LEU:HD11	2.39	0.49
2:G:113:LYS:HB2	2:G:138:LYS:HD2	1.94	0.49
2:H:153:TRP:HZ2	2:H:225:LEU:HD11	1.75	0.49
2:D:149:VAL:HG11	2:D:234:VAL:HG13	1.95	0.49
1:F:37:ILE:HD11	1:F:69:ALA:CB	2.42	0.49
1:F:201:THR:OG1	1:F:202:ASN:N	2.46	0.49
2:D:6:TYR:HE1	2:D:193:LYS:HE3	1.77	0.49
2:G:8:PRO:C	2:G:10:GLN:H	2.20	0.49
2:H:289:GLU:HA	2:H:289:GLU:OE2	2.12	0.49
1:E:223:ILE:HG21	1:F:215:THR:HB	1.94	0.49
2:G:159:ILE:HD12	2:G:163:ILE:HD11	1.94	0.49
1:A:224:LYS:CE	1:A:225:LYS:H	2.25	0.49
1:B:7:GLY:C	1:B:8:LEU:HD12	2.38	0.49
1:B:28:SER:O	1:B:49:THR:OG1	2.24	0.49
2:C:232:ASP:O	2:C:236:ILE:HG13	2.12	0.49
2:D:57:SER:HB2	2:D:75:ILE:HG22	1.94	0.49
2:D:150:ILE:HD11	2:D:156:TRP:CH2	2.48	0.49
1:A:84:SER:C	1:A:85:PHE:HD1	2.20	0.49
2:C:74:ILE:C	2:C:75:ILE:HG13	2.37	0.49

*Continued on next page...*

*Continued from previous page...*

Atom-1	Atom-2	Interatomic distance (Å)	Clash overlap (Å)
2:D:155:GLU:HB3	2:D:264:ASN:ND2	2.28	0.49
1:E:43:GLU:OE2	1:E:213:HIS:HB2	2.13	0.49
1:E:73:TYR:CD1	1:E:79:ASP:OD2	2.66	0.49
1:F:109:ILE:N	1:F:109:ILE:HD12	2.28	0.49
2:G:41:LYS:C	2:G:41:LYS:CD	2.81	0.49
2:G:78:LEU:CB	2:G:81:MET:HE2	2.43	0.49
2:G:166:ILE:C	2:G:168:SER:H	2.19	0.49
2:H:14:MET:SD	2:H:197:GLU:HB2	2.53	0.49
1:B:109:ILE:HG23	1:B:118:VAL:HG12	1.95	0.49
2:C:160:GLU:HG2	2:C:161:GLU:H	1.78	0.49
2:D:53:ASN:ND2	2:D:220:PRO:HD3	2.28	0.49
1:E:46:ILE:HG23	1:E:65:PHE:CE1	2.47	0.49
2:G:153:TRP:NE1	2:G:160:GLU:OE1	2.46	0.49
1:A:156:ILE:HD12	1:A:178:VAL:HG22	1.95	0.49
2:C:261:PHE:CB	2:C:285:HIS:HB2	2.42	0.49
2:D:48:ILE:HD12	2:D:114:ILE:HG21	1.95	0.49
1:A:46:ILE:HG23	1:A:65:PHE:CE1	2.48	0.48
1:A:82:LEU:C	1:A:84:SER:N	2.70	0.48
1:B:221:SER:OG	1:B:222:THR:N	2.45	0.48
2:C:185:VAL:O	2:C:189:LYS:HG2	2.13	0.48
1:F:73:TYR:HE1	1:F:192:HIS:NE2	2.10	0.48
2:D:291:ALA:O	2:D:295:MET:HE3	2.14	0.48
2:D:303:VAL:HA	2:D:306:VAL:HG12	1.95	0.48
1:E:67:ASN:O	1:E:68:ARG:NH1	2.46	0.48
2:H:120:ASP:OD1	2:H:121:TRP:N	2.44	0.48
2:C:137:ILE:HG22	2:C:250:LEU:HD11	1.95	0.48
2:D:147:VAL:HG13	2:D:273:PHE:CE2	2.47	0.48
1:E:79:ASP:CG	1:E:82:LEU:HB2	2.38	0.48
1:E:207:SER:HB3	1:E:209:TYR:CZ	2.48	0.48
1:F:129:ARG:HH11	2:G:264:ASN:HB2	1.79	0.48
1:A:95:ILE:HG23	1:A:173:TYR:HD2	1.77	0.48
1:A:205:THR:HA	2:C:193:LYS:HZ1	1.78	0.48
2:C:308:LYS:NZ	2:C:314:LEU:HA	2.29	0.48
1:A:13:PRO:HD2	1:A:115:LYS:HE3	1.84	0.48
1:A:68:ARG:CZ	1:A:196:HIS:CE1	2.97	0.48
1:A:159:CYS:C	1:A:160:ILE:HD13	2.39	0.48
2:C:147:VAL:O	2:C:148:ASP:O	2.31	0.48
2:C:168:SER:C	2:C:170:GLU:H	2.22	0.48
2:C:289:GLU:HA	2:C:289:GLU:OE2	2.14	0.48
2:D:160:GLU:O	2:D:162:ASP:N	2.43	0.48
2:G:157:PRO:O	2:G:159:ILE:N	2.45	0.48

*Continued on next page...*

*Continued from previous page...*

Atom-1	Atom-2	Interatomic distance (Å)	Clash overlap (Å)
2:G:171:GLY:O	2:G:175:VAL:HG22	2.14	0.48
1:A:27:PHE:HE2	1:A:29:MET:SD	2.36	0.48
1:B:27:PHE:CD2	1:B:29:MET:HG3	2.49	0.48
2:D:135:ASP:OD1	2:D:135:ASP:N	2.45	0.48
1:A:14:THR:OG1	1:A:70:TYR:OH	2.26	0.48
1:A:85:PHE:CE1	1:A:89:PHE:HB3	2.49	0.48
1:A:160:ILE:HD12	1:A:174:HIS:HA	1.96	0.48
1:B:149:TYR:HB3	1:B:191:TYR:HD2	1.78	0.48
2:D:186:LEU:HD23	2:D:190:ILE:HD11	1.94	0.48
1:F:198:LEU:HD11	1:F:212:GLN:HB2	1.94	0.48
1:B:9:LYS:NZ	1:B:114:GLY:O	2.47	0.48
2:D:80:GLY:HA3	2:D:92:TYR:CE2	2.48	0.48
2:D:151:GLU:HG3	2:D:226:VAL:CG2	2.40	0.48
2:D:226:VAL:HG23	2:D:227:LYS:N	2.29	0.48
2:D:164:ALA:O	2:D:168:SER:HB3	2.13	0.48
1:E:2:ASP:OD1	1:E:5:LYS:N	2.46	0.48
2:H:93:ARG:N	2:H:96:ASP:HB2	2.29	0.48
2:H:206:PHE:HB3	2:H:213:ARG:HG2	1.96	0.48
1:B:92:GLU:H	1:B:178:VAL:HG12	1.79	0.48
2:C:154:ASP:C	2:C:156:TRP:H	2.21	0.48
1:E:73:TYR:CE2	1:E:79:ASP:HA	2.49	0.48
1:F:77:ILE:HD11	1:F:220:HIS:ND1	2.29	0.48
2:G:244:LEU:O	2:G:247:SER:OG	2.21	0.48
1:A:3:LEU:HD22	1:A:8:LEU:HB3	1.95	0.47
1:E:129:ARG:NH2	2:H:256:GLU:OE2	2.43	0.47
2:G:175:VAL:HG21	2:G:217:LEU:HD23	1.95	0.47
1:A:14:THR:N	1:A:33:GLY:O	2.47	0.47
1:B:18:LEU:HD13	1:B:65:PHE:CE1	2.49	0.47
2:G:190:ILE:HD12	2:G:194:LEU:HD11	1.96	0.47
2:H:251:PRO:HA	2:H:275:ASN:HB3	1.95	0.47
1:A:78:SER:OG	1:A:83:GLN:NE2	2.47	0.47
1:B:96:ARG:HG3	1:B:102:THR:HG22	1.96	0.47
2:C:98:TYR:OH	2:C:132:GLU:OE1	2.21	0.47
2:D:287:LEU:O	2:D:295:MET:HE1	2.13	0.47
1:F:48:VAL:HG12	1:F:49:THR:H	1.79	0.47
1:B:109:ILE:N	1:B:109:ILE:HD12	2.29	0.47
1:B:201:THR:HG22	1:B:211:VAL:HG23	1.97	0.47
2:C:135:ASP:OD1	2:C:135:ASP:N	2.47	0.47
2:D:156:TRP:NE1	2:D:265:ALA:HB1	2.29	0.47
2:D:211[A]:GLU:CG	2:D:214:ARG:HE	2.27	0.47
1:B:106:LYS:O	1:B:121:ASP:N	2.47	0.47

*Continued on next page...*

*Continued from previous page...*

Atom-1	Atom-2	Interatomic distance (Å)	Clash overlap (Å)
1:B:223:ILE:O	1:B:224:LYS:HE3	2.14	0.47
2:D:249:ASP:HA	4:D:504:HOH:O	2.12	0.47
1:A:66:CRO:CD2	1:A:214:GLU:OE2	2.62	0.47
2:C:16:THR:HG23	2:C:18:PRO:HD2	1.96	0.47
2:C:78:LEU:HD23	2:C:97:HIS:ND1	2.30	0.47
1:A:18:LEU:HD13	1:A:65:PHE:HE2	1.80	0.47
1:A:30:GLU:O	1:A:46:ILE:HA	2.14	0.47
2:C:39:SER:CB	2:C:73:CYS:H	2.18	0.47
2:D:2:THR:OG1	2:D:4:LYS:HD2	2.15	0.47
2:G:156:TRP:NE1	2:G:265:ALA:HB1	2.30	0.47
2:H:67:ILE:HG12	2:H:299:ILE:HG22	1.96	0.47
1:E:55:PRO:O	1:E:136:GLN:NE2	2.47	0.47
1:F:50:LYS:NZ	1:F:51:GLY:HA2	2.30	0.47
1:F:203:VAL:O	1:F:205:THR:N	2.47	0.47
2:G:27:MET:HG3	2:G:36:TYR:CE1	2.49	0.47
2:H:141:VAL:HG22	2:H:253:LEU:HB3	1.96	0.47
2:H:143:MET:HE2	2:H:143:MET:HB3	1.78	0.47
1:E:36:ASN:HD22	1:E:39:GLU:HG2	1.80	0.47
1:E:198:LEU:HG	1:E:214:GLU:HB2	1.96	0.47
1:F:144:SER:OG	1:F:196:HIS:HB2	2.15	0.47
1:F:162:ALA:HA	1:F:172:THR:HG22	1.97	0.47
1:E:93:ARG:NE	1:E:175:MET:SD	2.88	0.47
1:F:12:MET:HE3	1:F:114:GLY:O	2.15	0.47
2:H:53:ASN:OD1	2:H:54:ALA:N	2.47	0.47
2:H:112:LYS:O	2:H:136:ARG:NE	2.47	0.47
2:H:121:TRP:NE1	3:H:401:CEI:H102	2.29	0.47
1:E:84:SER:HB2	1:E:85:PHE:HB2	1.96	0.46
1:F:11:VAL:HG12	1:F:36:ASN:CG	2.41	0.46
1:F:28:SER:HB2	1:F:50:LYS:HB3	1.97	0.46
1:F:67:ASN:HD22	1:F:109:ILE:HG12	1.79	0.46
1:F:93:ARG:HB3	1:F:105:VAL:HB	1.96	0.46
2:G:192:ARG:HD3	2:G:289:GLU:O	2.15	0.46
1:A:129:ARG:CZ	2:C:264:ASN:HB2	2.45	0.46
1:F:85:PHE:HB3	1:F:86:PRO:HA	1.97	0.46
1:A:66:CRO:N2	1:A:214:GLU:OE2	2.48	0.46
1:A:149:TYR:HB3	1:A:191:TYR:HD1	1.80	0.46
1:B:230:LEU:HD23	1:B:230:LEU:HA	1.74	0.46
2:C:80:GLY:HA2	2:C:86:LYS:HD2	1.98	0.46
2:C:87:SER:HB3	2:C:92:TYR:CE1	2.50	0.46
2:C:180:PHE:O	2:C:185:VAL:HG23	2.16	0.46
2:C:301:SER:HA	2:C:304:GLU:OE1	2.15	0.46

*Continued on next page...*

*Continued from previous page...*

Atom-1	Atom-2	Interatomic distance (Å)	Clash overlap (Å)
1:E:95:ILE:HG21	1:E:97:TYR:CZ	2.51	0.46
1:E:150:THR:HG23	1:E:188:MET:HE2	1.97	0.46
2:C:159:ILE:C	2:C:160:GLU:O	2.57	0.46
2:C:191:MET:HE3	2:C:283:GLY:C	2.40	0.46
2:C:218:SER:O	2:C:222:GLU:HG2	2.16	0.46
2:D:150:ILE:CD1	2:D:156:TRP:CZ2	2.99	0.46
1:E:11:VAL:CG1	1:E:36:ASN:OD1	2.63	0.46
2:G:211[A]:GLU:CD	2:G:214:ARG:HE	2.24	0.46
1:A:32:VAL:C	1:A:44:VAL:HG23	2.41	0.46
2:D:186:LEU:HG	2:D:286:PHE:CE2	2.51	0.46
1:F:16:ILE:HA	1:F:118:VAL:O	2.16	0.46
1:F:81:PHE:O	1:F:84:SER:HB3	2.15	0.46
2:G:57:SER:HB2	2:G:75:ILE:HG22	1.97	0.46
2:G:135:ASP:N	2:G:135:ASP:OD1	2.48	0.46
2:H:37:TYR:OH	2:H:68:GLU:OE1	2.25	0.46
1:A:145:TYR:CD1	1:A:145:TYR:N	2.83	0.46
2:C:209:LYS:HA	2:C:213:ARG:NH1	2.31	0.46
1:E:201:THR:HG22	1:E:211:VAL:O	2.16	0.46
1:F:107:SER:HB2	1:F:120:VAL:HG22	1.97	0.46
2:H:41:LYS:O	2:H:42:HIS:CG	2.68	0.46
2:C:39:SER:O	2:C:40:GLU:HB2	2.15	0.46
1:E:46:ILE:HG23	1:E:65:PHE:CZ	2.51	0.46
1:E:84:SER:HB2	1:E:85:PHE:CB	2.46	0.46
1:E:167:THR:HG23	1:E:169:LYS:HB2	1.98	0.46
1:F:97:TYR:CD1	1:F:173:TYR:HB3	2.51	0.46
2:H:80:GLY:HA2	2:H:86:LYS:HD3	1.97	0.46
2:C:110:LEU:HB3	2:C:114:ILE:HD11	1.97	0.46
2:D:92:TYR:CD2	2:D:215:PRO:HG3	2.50	0.46
2:D:155:GLU:HB2	2:D:265:ALA:HA	1.97	0.46
2:G:11:ARG:HH12	2:G:195:GLU:HB3	1.81	0.46
1:B:54:LEU:HA	1:B:55:PRO:HD3	1.77	0.46
1:B:54:LEU:CD1	1:B:56:PHE:O	2.64	0.46
1:B:66:CRO:CB2	1:B:68:ARG:HH21	2.28	0.46
1:B:68:ARG:HD3	1:B:71:THR:HB	1.98	0.46
1:B:79:ASP:OD2	1:B:82:LEU:HG	2.16	0.46
2:C:74:ILE:HG22	2:C:104:TRP:CH2	2.50	0.46
2:H:16:THR:HG22	2:H:17:GLY:H	1.80	0.46
1:E:18:LEU:HD23	1:E:19:GLU:C	2.41	0.46
1:E:198:LEU:HD23	1:E:199:VAL:N	2.31	0.46
1:F:2:ASP:OD1	1:F:3:LEU:N	2.49	0.46
1:F:156:ILE:CD1	1:F:178:VAL:HG23	2.46	0.46

*Continued on next page...*



*Continued from previous page...*

Atom-1	Atom-2	Interatomic distance (Å)	Clash overlap (Å)
2:G:164:ALA:O	2:G:168:SER:HB3	2.16	0.46
1:A:147:SER:O	1:A:157:GLY:HA2	2.16	0.45
2:C:244:LEU:O	2:C:247:SER:OG	2.29	0.45
2:C:316:VAL:HA	2:C:317:LEU:HA	1.68	0.45
2:D:162:ASP:HA	2:D:165:LEU:HB2	1.98	0.45
1:E:204:ASP:O	1:E:206:ALA:N	2.41	0.45
1:E:225:LYS:H	1:E:225:LYS:HG2	1.39	0.45
1:F:66:CRO:HD2	1:F:66:CRO:N2	2.31	0.45
2:H:147:VAL:O	2:H:148:ASP:O	2.34	0.45
1:A:111:LEU:HA	1:A:111:LEU:HD12	1.66	0.45
1:A:172:THR:HG23	1:B:149:TYR:HE2	1.81	0.45
2:C:120:ASP:CG	3:C:401:CEI:H101	2.41	0.45
2:D:10:GLN:O	2:D:13:ARG:HG3	2.16	0.45
2:D:49:PHE:O	2:D:50:LEU:HD23	2.17	0.45
2:D:191:MET:HB2	2:D:290:ASP:CG	2.41	0.45
3:H:401:CEI:HN1	3:H:401:CEI:H261	1.61	0.45
1:A:85:PHE:CZ	1:A:88:GLY:C	2.94	0.45
2:C:11:ARG:HG3	2:C:195:GLU:CD	2.41	0.45
2:C:246:ALA:O	2:C:248:ASP:N	2.41	0.45
2:G:15:ILE:HA	2:G:19:GLN:NE2	2.28	0.45
2:H:129:TYR:O	2:H:133:HIS:HB2	2.16	0.45
2:H:217:LEU:O	2:H:221:ARG:HG3	2.17	0.45
1:A:95:ILE:HG12	1:A:173:TYR:HE2	1.82	0.45
1:A:148:MET:HB2	1:A:192:HIS:CE1	2.51	0.45
1:A:204:ASP:OD1	1:A:206:ALA:CB	2.64	0.45
1:B:38:LEU:HD12	1:B:38:LEU:HA	1.75	0.45
1:B:144:SER:HB2	1:B:159:CYS:SG	2.57	0.45
1:B:149:TYR:CD1	1:B:149:TYR:C	2.95	0.45
2:D:156:TRP:CD1	2:D:265:ALA:HB1	2.52	0.45
1:E:68:ARG:HA	1:E:68:ARG:NE	2.30	0.45
1:E:151:ASN:OD1	1:E:152:VAL:HG23	2.17	0.45
1:F:23:GLY:HA3	4:F:306:HOH:O	2.16	0.45
2:G:153:TRP:CE2	2:G:160:GLU:HG3	2.51	0.45
1:A:224:LYS:HD2	1:A:225:LYS:H	1.81	0.45
1:B:90:THR:HG23	1:B:107:SER:O	2.17	0.45
2:C:64:VAL:CG1	2:C:65:PRO:HD3	2.47	0.45
2:C:245:ARG:NH1	2:C:272:LYS:HD3	2.32	0.45
2:D:4:LYS:HB3	2:D:193:LYS:HB2	1.98	0.45
2:H:160:GLU:HG2	2:H:161:GLU:N	2.32	0.45
1:B:156:ILE:HA	1:B:177:THR:O	2.16	0.45
1:E:141:MET:HE2	1:E:141:MET:HB2	1.82	0.45

*Continued on next page...*



*Continued from previous page...*

Atom-1	Atom-2	Interatomic distance (Å)	Clash overlap (Å)
2:G:7:ASP:C	2:G:7:ASP:OD1	2.58	0.45
2:G:180:PHE:O	2:G:185:VAL:HG23	2.16	0.45
1:A:25:HIS:CD2	1:A:55:PRO:HD2	2.52	0.45
1:A:183:LYS:O	1:A:185:VAL:HG13	2.16	0.45
1:B:36:ASN:ND2	1:B:39:GLU:HG2	2.16	0.45
1:B:72:GLY:N	1:B:216:ALA:O	2.49	0.45
1:F:43:GLU:HB2	1:F:213:HIS:ND1	2.32	0.45
1:A:109:ILE:HG22	1:A:110:SER:N	2.32	0.45
1:A:201:THR:HB	1:A:211:VAL:HG23	1.99	0.45
1:B:178:VAL:O	1:B:178:VAL:CG1	2.65	0.45
2:D:209:LYS:HA	2:D:213:ARG:NH1	2.31	0.45
2:G:35:ASN:OD1	2:G:36:TYR:N	2.50	0.45
2:H:223:ILE:HG13	2:H:224:PRO:HD2	1.98	0.45
2:C:119:HIS:CG	2:C:288:GLN:HE22	2.34	0.45
2:C:119:HIS:HE1	2:C:285:HIS:O	1.99	0.45
1:E:84:SER:HB2	1:E:85:PHE:CG	2.52	0.45
1:F:95:ILE:HB	1:F:103:ALA:HB3	1.99	0.45
2:G:37:TYR:CD2	2:G:75:ILE:HD12	2.52	0.45
2:H:49:PHE:HE1	2:H:73:CYS:HB3	1.82	0.45
2:H:237:VAL:HG23	2:H:240:TYR:CE1	2.52	0.45
1:A:28:SER:HB2	1:A:50:LYS:HB2	1.99	0.45
2:C:41:LYS:CG	2:C:42:HIS:H	2.29	0.45
1:E:221:SER:OG	1:E:222:THR:N	2.50	0.45
1:F:68:ARG:NH2	1:F:214:GLU:OE2	2.50	0.45
1:F:217:ILE:HG13	1:F:218:ALA:N	2.32	0.45
1:A:18:LEU:HD23	1:A:19:GLU:C	2.41	0.44
1:A:129:ARG:NH2	2:C:264:ASN:N	2.66	0.44
1:B:150:THR:HA	1:B:155:VAL:HG22	1.99	0.44
1:B:230:LEU:HA	1:B:231:PRO:HA	1.78	0.44
2:C:168:SER:C	2:C:170:GLU:N	2.75	0.44
2:D:102:THR:O	2:D:105:PHE:HB2	2.17	0.44
1:E:158:GLU:HG2	1:F:160:ILE:HD13	1.97	0.44
1:F:54:LEU:HD11	1:F:58:PHE:HD1	1.82	0.44
1:F:61:VAL:HG12	1:F:122:PHE:CZ	2.52	0.44
2:H:184:THR:O	2:H:188:SER:HB3	2.16	0.44
2:H:285:HIS:O	2:H:287:LEU:N	2.47	0.44
2:D:58:TYR:O	2:D:61:ARG:HD3	2.17	0.44
1:E:142:GLN:HB3	1:F:191:TYR:CE2	2.53	0.44
2:H:53:ASN:HB3	3:H:401:CEI:H28	2.00	0.44
1:A:42:GLN:HB3	1:A:214:GLU:O	2.17	0.44
1:B:93:ARG:CD	1:B:175:MET:SD	3.05	0.44

*Continued on next page...*

*Continued from previous page...*

Atom-1	Atom-2	Interatomic distance (Å)	Clash overlap (Å)
2:C:175:VAL:CG1	2:C:217:LEU:HB2	2.45	0.44
1:B:226:ILE:HG22	1:B:228:GLY:H	1.82	0.44
2:D:173:LYS:HA	2:D:173:LYS:HD3	1.62	0.44
2:D:205:PRO:HB2	2:D:206:PHE:CD2	2.53	0.44
1:F:83:GLN:OE1	1:F:185:VAL:HG13	2.17	0.44
1:F:149:TYR:O	1:F:155:VAL:HG23	2.16	0.44
2:C:66:HIS:CD2	2:C:296:GLY:HA3	2.52	0.44
2:D:92:TYR:CE2	2:D:215:PRO:HG3	2.53	0.44
2:D:154:ASP:C	2:D:156:TRP:N	2.72	0.44
1:E:223:ILE:HG13	1:F:195:GLN:HG2	1.98	0.44
1:F:29:MET:SD	1:F:61:VAL:HG21	2.57	0.44
1:A:154:SER:CB	1:A:180:LYS:HG2	2.48	0.44
1:B:11:VAL:HA	1:B:35:GLY:O	2.17	0.44
1:B:217:ILE:O	1:B:217:ILE:HG13	2.13	0.44
2:D:226:VAL:HG23	2:D:227:LYS:H	1.82	0.44
1:E:230:LEU:HD12	1:E:230:LEU:HA	1.65	0.44
1:F:13:PRO:HA	1:F:34:GLU:HA	1.99	0.44
1:A:14:THR:HG22	1:A:15:LYS:N	2.33	0.44
1:B:68:ARG:NH1	1:B:68:ARG:HA	2.33	0.44
2:D:233:VAL:O	2:D:237:VAL:HG12	2.18	0.44
1:E:2:ASP:OD1	1:E:5:LYS:HB2	2.16	0.44
1:E:56:PHE:HD1	1:E:57:ALA:O	1.99	0.44
1:E:59:ASP:OD2	1:E:140:GLY:HA2	2.18	0.44
2:H:37:TYR:O	2:H:74:ILE:HA	2.18	0.44
1:B:145:TYR:CE1	1:B:195:GLN:HB2	2.52	0.44
1:B:198:LEU:HD21	1:B:212:GLN:OE1	2.17	0.44
2:C:2:THR:OG1	2:C:4:LYS:HE2	2.18	0.44
2:C:154:ASP:O	2:C:156:TRP:N	2.51	0.44
2:D:125:LEU:HD11	2:D:219:TRP:HH2	1.83	0.44
1:E:155:VAL:C	1:E:156:ILE:HD13	2.42	0.44
1:F:36:ASN:CG	1:F:39:GLU:HB2	2.43	0.44
1:F:59:ASP:OD2	1:F:140:GLY:HA2	2.17	0.44
1:F:128:ARG:HG3	1:F:131:GLY:HA3	1.99	0.44
1:B:68:ARG:NH1	1:B:70:TYR:O	2.50	0.44
2:D:26:GLN:N	2:D:26:GLN:OE1	2.50	0.44
2:D:27:MET:HE1	2:D:107:LEU:CB	2.48	0.44
1:E:98:GLN:HG2	1:E:171:PHE:CE1	2.53	0.44
1:E:229:SER:O	1:F:200:LYS:O	2.36	0.44
1:F:183:LYS:O	1:F:185:VAL:HG23	2.18	0.44
2:H:121:TRP:CE2	3:H:401:CEI:H102	2.53	0.44
1:A:115:LYS:HB2	1:A:116:PHE:H	1.39	0.43

*Continued on next page...*

*Continued from previous page...*

Atom-1	Atom-2	Interatomic distance (Å)	Clash overlap (Å)
1:F:69:ALA:O	1:F:71:THR:N	2.51	0.43
2:G:66:HIS:O	2:G:300:LYS:HD2	2.18	0.43
2:H:57:SER:HB2	2:H:75:ILE:HG22	2.00	0.43
1:A:229:SER:CB	1:B:200:LYS:O	2.66	0.43
2:C:14:MET:HE1	2:C:197:GLU:OE1	2.18	0.43
2:C:113:LYS:HA	2:C:136:ARG:C	2.44	0.43
2:D:43:ALA:HA	2:D:72:ARG:HB2	2.01	0.43
1:F:48:VAL:HG12	1:F:49:THR:N	2.34	0.43
1:F:59:ASP:N	1:F:59:ASP:OD1	2.49	0.43
2:G:197:GLU:O	2:G:200:ALA:HB3	2.17	0.43
2:H:218:SER:O	2:H:222:GLU:HG2	2.19	0.43
1:A:224:LYS:HD2	1:A:224:LYS:HA	1.76	0.43
1:B:54:LEU:HD13	1:B:56:PHE:CE1	2.53	0.43
2:C:204:GLU:HB3	2:C:205:PRO:HD3	2.01	0.43
2:D:194:LEU:HD21	2:D:289:GLU:HG3	2.00	0.43
1:E:13:PRO:C	1:E:115:LYS:HB2	2.44	0.43
1:E:28:SER:HB2	1:E:50:LYS:HB2	2.00	0.43
2:H:191:MET:HE3	2:H:283:GLY:HA2	2.00	0.43
2:D:27:MET:HE3	2:D:27:MET:HB3	1.72	0.43
2:D:171:GLY:HA2	2:D:174:MET:HB2	2.00	0.43
1:E:224:LYS:HA	1:E:224:LYS:HE2	1.93	0.43
1:F:84:SER:HB2	1:F:181:SER:HB2	2.00	0.43
1:A:93:ARG:HB3	1:A:105:VAL:HB	2.00	0.43
2:C:148:ASP:OD1	2:C:149:VAL:N	2.42	0.43
1:E:85:PHE:CZ	1:E:89:PHE:CG	2.98	0.43
1:F:9:LYS:O	1:F:12:MET:HG3	2.17	0.43
2:G:287:LEU:HD12	2:G:295:MET:CE	2.49	0.43
2:H:24:CYS:HB3	2:H:36:TYR:O	2.19	0.43
1:B:154:SER:OG	1:B:180:LYS:HE3	2.19	0.43
1:E:9:LYS:HD3	1:E:11:VAL:O	2.19	0.43
1:F:207:SER:HB3	1:F:209:TYR:CD2	2.53	0.43
2:G:153:TRP:HH2	2:G:163:ILE:HD13	1.84	0.43
2:G:186:LEU:HG	2:G:286:PHE:CE2	2.54	0.43
3:G:401:CEI:HN1	3:G:401:CEI:H261	1.56	0.43
2:C:14:MET:CE	2:C:198:GLU:HG3	2.49	0.43
2:C:74:ILE:HG22	2:C:104:TRP:HH2	1.84	0.43
2:G:121:TRP:CZ2	2:G:222:GLU:HB2	2.54	0.43
2:H:16:THR:HG22	2:H:17:GLY:N	2.32	0.43
2:H:64:VAL:O	2:H:66:HIS:N	2.52	0.43
1:B:2:ASP:C	1:B:5:LYS:HE2	2.44	0.43
2:C:160:GLU:HG2	2:C:161:GLU:N	2.34	0.43

*Continued on next page...*

*Continued from previous page...*

Atom-1	Atom-2	Interatomic distance (Å)	Clash overlap (Å)
2:C:240:TYR:O	2:C:244:LEU:HB2	2.19	0.43
2:D:6:TYR:HD1	2:D:193:LYS:HB3	1.83	0.43
2:D:217:LEU:HD11	2:D:221:ARG:CZ	2.48	0.43
1:F:97:TYR:HD1	1:F:173:TYR:HB3	1.83	0.43
1:A:9:LYS:O	1:A:11:VAL:N	2.52	0.43
1:B:77:ILE:HG21	1:B:192:HIS:CD2	2.54	0.43
2:C:37:TYR:O	2:C:74:ILE:HA	2.19	0.43
2:C:45:ASN:O	2:C:72:ARG:HB3	2.19	0.43
2:D:166:ILE:C	2:D:168:SER:N	2.76	0.43
2:G:66:HIS:NE2	2:G:293:ASP:HA	2.34	0.43
1:A:9:LYS:HE2	1:A:114:GLY:HA2	2.01	0.42
1:A:68:ARG:HA	1:A:68:ARG:NE	2.33	0.42
1:A:89:PHE:CD1	1:A:109:ILE:HD13	2.53	0.42
2:C:58:TYR:O	2:C:60:TRP:N	2.51	0.42
1:E:150:THR:CG2	1:E:188:MET:HE2	2.49	0.42
1:F:47:SER:OG	1:F:48:VAL:O	2.37	0.42
2:G:8:PRO:O	2:G:10:GLN:N	2.52	0.42
1:A:18:LEU:HD13	1:A:65:PHE:CE2	2.55	0.42
1:A:81:PHE:HZ	1:A:148:MET:CE	2.31	0.42
1:E:42:GLN:N	1:E:213:HIS:NE2	2.67	0.42
1:F:55:PRO:HD2	1:F:56:PHE:CD2	2.54	0.42
2:H:16:THR:HB	2:H:19:GLN:H	1.84	0.42
1:A:13:PRO:C	1:A:115:LYS:HD3	2.44	0.42
2:C:89:ASN:OD1	2:C:89:ASN:N	2.52	0.42
2:D:114:ILE:O	2:D:138:LYS:N	2.45	0.42
1:F:190:LEU:HD13	1:F:191:TYR:N	2.33	0.42
2:G:53:ASN:OD1	2:G:54:ALA:N	2.52	0.42
2:H:105:PHE:O	2:H:108:LEU:HB2	2.19	0.42
1:A:84:SER:C	1:A:85:PHE:CD1	2.97	0.42
1:A:129:ARG:NH2	2:C:264:ASN:HA	2.34	0.42
1:E:91:TYR:CZ	1:E:93:ARG:NH1	2.88	0.42
1:E:207:SER:OG	1:E:208:GLY:N	2.52	0.42
1:F:107:SER:CB	1:F:120:VAL:HG22	2.50	0.42
1:F:142:GLN:HB3	1:F:143:PRO:HD2	2.01	0.42
1:A:76:GLU:O	1:A:77:ILE:HG13	2.20	0.42
1:B:20:GLY:HA3	1:B:27:PHE:CZ	2.55	0.42
1:B:99:ASP:OD2	1:B:128:ARG:HG2	2.19	0.42
2:C:293:ASP:O	2:C:297:LYS:HG3	2.20	0.42
2:D:51:HIS:NE2	2:D:81:MET:CE	2.76	0.42
1:F:167:THR:HG23	1:F:169:LYS:HG2	2.00	0.42
2:G:145:SER:HB2	2:G:147:VAL:HG23	2.01	0.42

*Continued on next page...*

*Continued from previous page...*

Atom-1	Atom-2	Interatomic distance (Å)	Clash overlap (Å)
2:H:11:ARG:HB2	2:H:195:GLU:OE2	2.19	0.42
2:H:55:THR:HG22	2:H:202:TYR:CE2	2.54	0.42
2:D:49:PHE:CE1	2:D:73:CYS:HB3	2.53	0.42
1:F:25:HIS:CE1	1:F:55:PRO:HD3	2.54	0.42
2:G:249:ASP:O	2:G:251:PRO:HD3	2.20	0.42
1:A:60:ILE:HD12	1:A:61:VAL:HG13	2.01	0.42
2:D:129:TYR:CE1	2:D:133:HIS:CG	3.08	0.42
2:D:138:LYS:HD3	2:D:307:LEU:HD21	2.01	0.42
1:E:13:PRO:HA	1:E:34:GLU:HB3	2.00	0.42
1:E:154:SER:HB2	1:E:179:TYR:O	2.19	0.42
2:G:93:ARG:HE	2:G:93:ARG:HB3	1.55	0.42
2:H:58:TYR:O	2:H:59:LEU:C	2.62	0.42
2:C:53:ASN:OD1	2:C:216:THR:HA	2.20	0.42
1:F:99:ASP:HB2	1:F:171:PHE:HZ	1.85	0.42
2:G:11:ARG:NH1	2:G:195:GLU:HB3	2.35	0.42
2:H:12:LYS:HD3	2:H:12:LYS:C	2.45	0.42
1:A:109:ILE:HD12	1:A:109:ILE:H	1.84	0.42
1:B:145:TYR:CE2	1:B:195:GLN:OE1	2.72	0.42
1:B:202:ASN:ND2	1:B:205:THR:HG21	2.35	0.42
1:E:178:VAL:HG23	1:E:178:VAL:O	2.19	0.42
2:G:176:LEU:HD11	2:G:214:ARG:NH2	2.35	0.42
2:G:186:LEU:O	2:G:190:ILE:HG13	2.20	0.42
1:A:85:PHE:HZ	1:A:88:GLY:C	2.27	0.41
1:B:81:PHE:HB3	1:B:89:PHE:CE2	2.55	0.41
1:B:166:GLN:HE21	1:B:166:GLN:HB2	1.72	0.41
1:B:201:THR:CG2	1:B:211:VAL:HG23	2.50	0.41
2:C:73:CYS:C	2:C:74:ILE:HG13	2.45	0.41
2:C:211:GLU:HG3	4:C:509:HOH:O	2.20	0.41
1:E:36:ASN:ND2	1:E:39:GLU:H	2.18	0.41
1:E:149:TYR:CD1	1:F:170:HIS:HB2	2.55	0.41
2:G:29:VAL:HG22	2:G:107:LEU:HD12	2.02	0.41
2:G:226:VAL:HG23	2:G:227:LYS:HD2	2.02	0.41
1:A:16:ILE:HD13	1:A:44:VAL:HG21	2.02	0.41
1:B:50:LYS:CD	1:B:51:GLY:H	2.33	0.41
1:B:65:PHE:C	1:B:66:CRO:HA31	2.45	0.41
2:D:188:SER:OG	2:D:189:LYS:HD3	2.21	0.41
2:D:205:PRO:HB2	2:D:206:PHE:CE2	2.55	0.41
2:D:295:MET:HE3	2:D:295:MET:HB2	1.66	0.41
1:E:85:PHE:CE1	1:E:89:PHE:HB3	2.52	0.41
1:E:205:THR:O	1:E:207:SER:N	2.53	0.41
1:A:223:ILE:HG23	1:B:197:ARG:HB2	2.02	0.41

*Continued on next page...*

*Continued from previous page...*

Atom-1	Atom-2	Interatomic distance (Å)	Clash overlap (Å)
1:B:85:PHE:HB3	1:B:86:PRO:HA	2.02	0.41
1:B:93:ARG:NE	1:B:175:MET:SD	2.92	0.41
1:B:190:LEU:HD23	1:B:191:TYR:N	2.35	0.41
1:F:80:TYR:OH	1:F:181:SER:N	2.48	0.41
2:G:112:LYS:HA	2:G:136:ARG:CZ	2.51	0.41
2:G:224:PRO:HA	2:G:234:VAL:HG22	2.02	0.41
2:H:67:ILE:O	2:H:70:VAL:HG22	2.20	0.41
2:H:203:LEU:HD12	2:H:203:LEU:O	2.21	0.41
2:H:286:PHE:O	2:H:287:LEU:C	2.63	0.41
1:A:223:ILE:HG22	1:B:195:GLN:NE2	2.36	0.41
2:D:33:PHE:CE1	2:D:85:GLY:HA3	2.55	0.41
2:D:166:ILE:HG13	2:D:167:LYS:N	2.35	0.41
2:D:167:LYS:HE3	2:D:167:LYS:HB3	1.81	0.41
1:F:22:VAL:HG23	1:F:27:PHE:HE1	1.84	0.41
1:F:99:ASP:HB3	1:F:101:GLY:H	1.85	0.41
2:G:13:ARG:HD2	2:G:13:ARG:O	2.20	0.41
2:G:41:LYS:CD	2:G:42:HIS:CA	2.96	0.41
2:G:44:GLU:H	2:G:44:GLU:HG3	1.53	0.41
2:G:191:MET:HE3	2:G:191:MET:HB3	1.84	0.41
2:H:143:MET:C	2:H:145:SER:N	2.77	0.41
1:A:12:MET:HB2	1:A:115:LYS:HG2	2.01	0.41
1:A:148:MET:HE1	1:A:179:TYR:CE2	2.55	0.41
1:B:6:LEU:HD12	1:B:85:PHE:O	2.20	0.41
1:B:125:LYS:CD	1:B:126:ASP:H	2.17	0.41
1:B:127:LEU:HD23	1:B:127:LEU:HA	1.51	0.41
2:C:47:VAL:HG12	2:C:72:ARG:O	2.20	0.41
1:E:198:LEU:CD2	1:E:212:GLN:HB2	2.42	0.41
1:E:229:SER:OG	1:E:231:PRO:OXT	2.31	0.41
2:G:104:TRP:CE2	2:G:108:LEU:HD11	2.55	0.41
2:G:119:HIS:CD2	2:G:288:GLN:HE22	2.39	0.41
2:G:152:SER:HB2	2:G:154:ASP:OD2	2.20	0.41
2:G:166:ILE:C	2:G:168:SER:N	2.78	0.41
1:A:89:PHE:CD1	1:A:89:PHE:C	2.98	0.41
1:B:57:ALA:HB2	1:B:136:GLN:HA	2.03	0.41
1:B:183:LYS:HA	1:B:184:PRO:HD3	1.81	0.41
1:F:68:ARG:NE	1:F:68:ARG:CA	2.71	0.41
1:F:148:MET:HE2	1:F:194:ILE:CD1	2.47	0.41
1:F:159:CYS:SG	1:F:175:MET:HE2	2.60	0.41
2:G:47:VAL:HG22	2:G:115:ILE:CB	2.48	0.41
2:C:287:LEU:H	2:C:287:LEU:HD23	1.85	0.41
1:E:113:ASP:OD1	1:E:113:ASP:N	2.53	0.41

*Continued on next page...*

*Continued from previous page...*

Atom-1	Atom-2	Interatomic distance (Å)	Clash overlap (Å)
2:G:25:LYS:HE3	2:G:40:GLU:OE2	2.21	0.41
2:H:78:LEU:HD11	2:H:125:LEU:CD1	2.50	0.41
2:H:108:LEU:HD23	2:H:108:LEU:HA	1.95	0.41
1:B:44:VAL:O	1:B:211:VAL:HA	2.21	0.41
1:E:132:PRO:HG2	1:E:171:PHE:CG	2.55	0.41
2:G:64:VAL:N	2:G:65:PRO:CD	2.84	0.41
2:H:253:LEU:HD12	2:H:277:GLU:O	2.20	0.41
1:A:12:MET:HA	1:A:13:PRO:HD3	1.80	0.41
1:A:129:ARG:NH2	2:C:264:ASN:CA	2.82	0.41
1:B:195:GLN:O	1:B:216:ALA:HA	2.21	0.41
1:B:200:LYS:H	1:B:200:LYS:HG3	1.74	0.41
2:C:40:GLU:H	2:C:72:ARG:HG3	1.86	0.41
2:C:77:ASP:OD2	2:C:82:GLY:HA3	2.20	0.41
2:C:231:PRO:O	2:C:234:VAL:HG22	2.21	0.41
2:D:178:ASN:O	2:D:179:ASN:C	2.64	0.41
1:E:48:VAL:HG12	1:E:49:THR:N	2.36	0.41
1:E:76:GLU:C	1:E:77:ILE:HG13	2.46	0.41
1:E:183:LYS:HD3	1:E:183:LYS:HA	1.70	0.41
1:F:73:TYR:CD2	1:F:79:ASP:CG	2.99	0.41
1:F:205:THR:HB	1:F:207:SER:H	1.86	0.41
2:H:78:LEU:HB3	2:H:97:HIS:HD2	1.85	0.41
2:H:113:LYS:HB2	2:H:113:LYS:HE3	1.71	0.41
1:A:20:GLY:HA3	1:A:27:PHE:CE1	2.55	0.41
1:B:93:ARG:HD3	1:B:175:MET:CG	2.51	0.41
1:B:142:GLN:HB3	1:B:143:PRO:HD2	2.03	0.41
1:B:149:TYR:HB3	1:B:191:TYR:CD2	2.56	0.41
2:C:58:TYR:O	2:C:59:LEU:C	2.64	0.41
2:C:286:PHE:O	2:C:287:LEU:C	2.64	0.41
2:D:93:ARG:HE	2:D:93:ARG:HB3	1.43	0.41
2:D:95:LEU:HD23	2:D:95:LEU:HA	1.90	0.41
1:E:85:PHE:HZ	1:E:89:PHE:CG	2.32	0.41
1:E:230:LEU:HD22	1:F:203:VAL:HG11	2.03	0.41
1:F:5:LYS:H	1:F:5:LYS:HD2	1.83	0.41
1:A:120:VAL:HG12	1:A:121:ASP:N	2.36	0.40
2:C:41:LYS:HG3	2:C:42:HIS:H	1.85	0.40
2:C:305:ARG:O	2:C:308:LYS:HG3	2.21	0.40
2:D:166:ILE:C	2:D:168:SER:H	2.29	0.40
2:D:303:VAL:O	2:D:306:VAL:CG1	2.68	0.40
1:E:95:ILE:HG23	1:E:173:TYR:CD1	2.55	0.40
2:H:225:LEU:HA	2:H:225:LEU:HD23	1.78	0.40
1:A:145:TYR:CE1	1:A:195:GLN:HB2	2.56	0.40

*Continued on next page...*



*Continued from previous page...*

Atom-1	Atom-2	Interatomic distance (Å)	Clash overlap (Å)
1:B:58:PHE:CE2	1:B:210:VAL:HG11	2.55	0.40
2:C:10:GLN:HG2	2:C:192:ARG:NH2	2.36	0.40
1:E:8:LEU:HA	1:E:12:MET:HE1	2.04	0.40
1:E:9:LYS:O	1:E:10:GLU:C	2.64	0.40
2:G:143:MET:HE2	2:G:143:MET:HB3	1.95	0.40
1:A:18:LEU:HD23	1:A:19:GLU:N	2.36	0.40
1:A:27:PHE:CE2	1:A:29:MET:SD	3.13	0.40
1:A:46:ILE:HG23	1:A:65:PHE:CZ	2.55	0.40
1:B:63:VAL:HG12	1:B:66:CRO:CD2	2.52	0.40
2:C:98:TYR:HE1	2:C:129:TYR:HB2	1.86	0.40
2:D:51:HIS:CE1	2:D:56:SER:HA	2.57	0.40
2:D:253:LEU:HD13	2:D:302:PHE:HB2	2.03	0.40
1:E:127:LEU:HD13	1:E:133:VAL:CG1	2.52	0.40
1:F:29:MET:HG3	1:F:29:MET:H	1.75	0.40
1:F:230:LEU:HD22	1:F:230:LEU:HA	1.86	0.40
2:G:13:ARG:HH11	2:G:13:ARG:HD3	1.76	0.40
2:G:51:HIS:N	2:G:60:TRP:HE1	2.19	0.40
2:G:255:ILE:HG23	2:G:279:VAL:HG23	2.04	0.40
2:H:18:PRO:HD3	2:H:21:TRP:CZ3	2.56	0.40
2:H:30:LEU:HB3	2:H:31:ASP:H	1.73	0.40
1:A:22:VAL:O	1:A:24:ASP:N	2.51	0.40
1:A:115:LYS:HD2	1:A:116:PHE:N	2.35	0.40
1:A:142:GLN:HE21	1:A:142:GLN:HB3	1.62	0.40
1:A:201:THR:CB	1:A:211:VAL:HG23	2.52	0.40
2:D:114:ILE:HB	2:D:116:PHE:CE1	2.56	0.40
1:F:20:GLY:HA3	1:F:27:PHE:CZ	2.57	0.40
2:G:31:ASP:OD2	2:G:88:GLY:HA3	2.22	0.40
2:G:284:LEU:HD23	2:G:284:LEU:HA	1.70	0.40
2:H:81:MET:HB3	4:H:502:HOH:O	2.20	0.40
2:H:159:ILE:HD12	2:H:163:ILE:HG12	2.02	0.40
1:A:3:LEU:HA	1:A:3:LEU:HD23	1.89	0.40
1:B:79:ASP:HB3	1:B:83:GLN:NE2	2.37	0.40
2:C:176:LEU:O	2:C:213:ARG:HD2	2.21	0.40
2:D:29:VAL:N	2:D:32:SER:O	2.36	0.40
2:D:51:HIS:CE1	2:D:77:ASP:HA	2.57	0.40
1:F:9:LYS:O	1:F:10:GLU:C	2.65	0.40
1:F:22:VAL:HG23	1:F:27:PHE:CE1	2.56	0.40
2:G:6:TYR:CD1	2:G:193:LYS:HB3	2.57	0.40
2:G:112:LYS:HA	2:G:136:ARG:NE	2.37	0.40
2:H:53:ASN:ND2	2:H:220:PRO:HD3	2.35	0.40
2:H:99:LYS:HB3	2:H:99:LYS:HE2	1.82	0.40

*Continued on next page...*



*Continued from previous page...*

Atom-1	Atom-2	Interatomic distance (Å)	Clash overlap (Å)
2:H:262:PHE:O	2:H:266:ILE:HG23	2.22	0.40

There are no symmetry-related clashes.

## 5.3 Torsion angles [i](#)

### 5.3.1 Protein backbone [i](#)

In the following table, the Percentiles column shows the percent Ramachandran outliers of the chain as a percentile score with respect to all X-ray entries followed by that with respect to entries of similar resolution.

The Analysed column shows the number of residues for which the backbone conformation was analysed, and the total number of residues.

Mol	Chain	Analysed	Favoured	Allowed	Outliers	Percentiles	
1	A	226/231 (98%)	179 (79%)	29 (13%)	18 (8%)	1	0
1	B	225/231 (97%)	171 (76%)	38 (17%)	16 (7%)	1	0
1	E	226/231 (98%)	188 (83%)	22 (10%)	16 (7%)	1	0
1	F	225/231 (97%)	172 (76%)	35 (16%)	18 (8%)	1	0
2	C	315/319 (99%)	255 (81%)	45 (14%)	15 (5%)	2	1
2	D	307/319 (96%)	256 (83%)	42 (14%)	9 (3%)	3	3
2	G	307/319 (96%)	254 (83%)	42 (14%)	11 (4%)	3	2
2	H	316/319 (99%)	255 (81%)	43 (14%)	18 (6%)	1	0
All	All	2147/2200 (98%)	1730 (81%)	296 (14%)	121 (6%)	1	1

All (121) Ramachandran outliers are listed below:

Mol	Chain	Res	Type
1	A	24	ASP
1	A	37	ILE
1	A	86	PRO
1	A	114	GLY
1	A	186	GLU
1	A	201	THR
1	B	5	LYS
1	B	113	ASP
1	B	114	GLY

*Continued on next page...*

*Continued from previous page...*

Mol	Chain	Res	Type
1	B	116	PHE
2	C	148	ASP
2	C	154	ASP
1	E	85	PHE
1	E	86	PRO
1	E	186	GLU
1	E	202	ASN
1	F	3	LEU
1	F	4	ALA
1	F	10	GLU
1	F	152	VAL
1	F	203	VAL
1	F	205	THR
2	G	148	ASP
2	G	153	TRP
2	G	282	LYS
2	G	283	GLY
2	H	22	ALA
2	H	148	ASP
2	H	154	ASP
2	H	286	PHE
1	A	83	GLN
1	A	206	ALA
1	B	10	GLU
1	B	29	MET
1	B	185	VAL
1	B	187	THR
2	C	40	GLU
2	C	59	LEU
2	C	169	GLU
2	C	314	LEU
2	D	41	LYS
2	D	155	GLU
1	E	206	ALA
1	E	221	SER
1	F	70	TYR
1	F	185	VAL
1	F	225	LYS
1	F	229	SER
2	G	42	HIS
2	G	247	SER
1	A	10	GLU

*Continued on next page...*

*Continued from previous page...*

Mol	Chain	Res	Type
1	A	13	PRO
1	A	136	GLN
1	A	204	ASP
1	B	110	SER
1	B	181	SER
1	B	203	VAL
2	C	155	GLU
2	C	247	SER
2	C	311	GLN
2	D	154	ASP
2	D	247	SER
2	D	274	PRO
2	D	282	LYS
1	E	207	SER
1	E	222	THR
1	F	29	MET
2	G	9	GLU
2	G	41	LYS
2	H	3	SER
2	H	30	LEU
2	H	41	LYS
2	H	51	HIS
2	H	191	MET
2	H	296	GLY
1	A	152	VAL
1	B	152	VAL
1	B	190	LEU
1	E	5	LYS
1	E	64	ALA
1	E	84	SER
1	E	152	VAL
1	E	205	THR
1	F	132	PRO
2	H	59	LEU
2	H	192	ARG
2	H	247	SER
1	A	23	GLY
1	A	115	LYS
1	B	30	GLU
1	B	230	LEU
2	C	4	LYS
2	C	22	ALA

*Continued on next page...*

*Continued from previous page...*

Mol	Chain	Res	Type
2	C	313	GLY
2	D	148	ASP
1	E	70	TYR
1	E	229	SER
1	F	113	ASP
1	F	227	GLU
1	F	230	LEU
2	G	4	LYS
2	G	160	GLU
2	G	263	SER
2	H	42	HIS
2	H	205	PRO
1	A	227	GLU
2	D	4	LYS
1	E	230	LEU
1	F	30	GLU
1	F	228	GLY
2	H	125	LEU
2	H	143	MET
2	C	205	PRO
1	A	226	ILE
2	D	296	GLY
2	H	291	ALA
1	B	139	VAL
2	C	65	PRO
1	A	11	VAL
1	F	217	ILE
2	C	259	PRO

### 5.3.2 Protein sidechains ⓘ

In the following table, the Percentiles column shows the percent sidechain outliers of the chain as a percentile score with respect to all X-ray entries followed by that with respect to entries of similar resolution.

The Analysed column shows the number of residues for which the sidechain conformation was analysed, and the total number of residues.

Mol	Chain	Analysed	Rotameric	Outliers	Percentiles	
1	A	198/198 (100%)	197 (100%)	1 (0%)	86	94
1	B	197/198 (100%)	192 (98%)	5 (2%)	42	63
1	E	198/198 (100%)	195 (98%)	3 (2%)	60	77

*Continued on next page...*

*Continued from previous page...*

Mol	Chain	Analysed	Rotameric	Outliers	Percentiles	
1	F	197/198 (100%)	194 (98%)	3 (2%)	60	77
2	C	280/282 (99%)	280 (100%)	0	100	100
2	D	273/282 (97%)	269 (98%)	4 (2%)	60	77
2	G	273/282 (97%)	270 (99%)	3 (1%)	70	84
2	H	281/282 (100%)	281 (100%)	0	100	100
All	All	1897/1920 (99%)	1878 (99%)	19 (1%)	75	86

All (19) residues with a non-rotameric sidechain are listed below:

Mol	Chain	Res	Type
1	A	44	VAL
1	B	30	GLU
1	B	217	ILE
1	B	225	LYS
1	B	227	GLU
1	B	230	LEU
2	D	211[A]	GLU
2	D	211[B]	GLU
2	D	271	LYS
2	D	309	ASN
1	E	224	LYS
1	E	225	LYS
1	E	230	LEU
1	F	68	ARG
1	F	229	SER
1	F	230	LEU
2	G	41	LYS
2	G	211[A]	GLU
2	G	211[B]	GLU

Sometimes sidechains can be flipped to improve hydrogen bonding and reduce clashes. All (27) such sidechains are listed below:

Mol	Chain	Res	Type
1	A	83	GLN
1	A	151	ASN
1	A	195	GLN
1	B	36	ASN
1	B	42	GLN
1	B	83	GLN

*Continued on next page...*

*Continued from previous page...*

Mol	Chain	Res	Type
1	B	192	HIS
1	B	195	GLN
2	C	119	HIS
2	C	178	ASN
2	C	235	GLN
2	C	239	ASN
2	C	288	GLN
2	D	51	HIS
2	D	119	HIS
1	F	36	ASN
1	F	67	ASN
1	F	196	HIS
2	G	19	GLN
2	G	28	ASN
2	G	119	HIS
2	G	128	HIS
2	G	288	GLN
2	H	35	ASN
2	H	178	ASN
2	H	235	GLN
2	H	264	ASN

### 5.3.3 RNA ⓘ

There are no RNA molecules in this entry.

## 5.4 Non-standard residues in protein, DNA, RNA chains ⓘ

4 non-standard protein/DNA/RNA residues are modelled in this entry.

In the following table, the Counts columns list the number of bonds (or angles) for which Mogul statistics could be retrieved, the number of bonds (or angles) that are observed in the model and the number of bonds (or angles) that are defined in the Chemical Component Dictionary. The Link column lists molecule types, if any, to which the group is linked. The Z score for a bond length (or angle) is the number of standard deviations the observed value is removed from the expected value. A bond length (or angle) with  $|Z| > 2$  is considered an outlier worth inspection. RMSZ is the root-mean-square of all Z scores of the bond lengths (or angles).

Mol	Type	Chain	Res	Link	Bond lengths			Bond angles		
					Counts	RMSZ	$\# Z  > 2$	Counts	RMSZ	$\# Z  > 2$
1	CRO	B	66	1	22,22,24	2.24	7 (31%)	27,30,34	2.84	9 (33%)
1	CRO	E	66	1	22,22,24	2.94	7 (31%)	27,30,34	2.80	9 (33%)

Mol	Type	Chain	Res	Link	Bond lengths			Bond angles		
					Counts	RMSZ	# Z  > 2	Counts	RMSZ	# Z  > 2
1	CRO	A	66	1	22,22,24	2.69	6 (27%)	27,30,34	2.84	8 (29%)
1	CRO	F	66	1	22,22,24	2.35	5 (22%)	27,30,34	2.96	7 (25%)

In the following table, the Chirals column lists the number of chiral outliers, the number of chiral centers analysed, the number of these observed in the model and the number defined in the Chemical Component Dictionary. Similar counts are reported in the Torsion and Rings columns. '-' means no outliers of that kind were identified.

Mol	Type	Chain	Res	Link	Chirals	Torsions	Rings
1	CRO	B	66	1	-	5/9/29/32	0/2/2/2
1	CRO	E	66	1	-	6/9/29/32	0/2/2/2
1	CRO	A	66	1	-	3/9/29/32	0/2/2/2
1	CRO	F	66	1	-	4/9/29/32	0/2/2/2

All (25) bond length outliers are listed below:

Mol	Chain	Res	Type	Atoms	Z	Observed(Å)	Ideal(Å)
1	E	66	CRO	CA2-C2	-10.74	1.38	1.48
1	A	66	CRO	CA2-C2	-9.37	1.39	1.48
1	F	66	CRO	CA2-C2	-8.54	1.40	1.48
1	B	66	CRO	CA2-C2	-7.73	1.41	1.48
1	A	66	CRO	C1-N2	4.63	1.39	1.32
1	E	66	CRO	C1-N2	4.35	1.38	1.32
1	E	66	CRO	CB2-CA2	-3.68	1.32	1.35
1	F	66	CRO	C1-N2	3.58	1.37	1.32
1	E	66	CRO	CE2-CZ	3.34	1.45	1.38
1	F	66	CRO	CE2-CZ	3.15	1.44	1.38
1	A	66	CRO	CE2-CZ	3.04	1.44	1.38
1	B	66	CRO	CE2-CZ	2.93	1.44	1.38
1	B	66	CRO	C1-N2	2.86	1.36	1.32
1	A	66	CRO	CA1-C1	2.80	1.56	1.51
1	E	66	CRO	CA1-C1	2.74	1.56	1.51
1	A	66	CRO	CA2-N2	-2.56	1.33	1.38
1	B	66	CRO	CG2-CB2	2.51	1.51	1.46
1	B	66	CRO	CA2-N2	-2.49	1.33	1.38
1	F	66	CRO	CA3-N3	2.49	1.52	1.47
1	B	66	CRO	CD2-CG2	2.26	1.43	1.39
1	A	66	CRO	CB2-CA2	-2.20	1.33	1.35
1	E	66	CRO	CD2-CG2	2.20	1.43	1.39
1	B	66	CRO	CA1-C1	2.14	1.55	1.51
1	E	66	CRO	CA2-N2	-2.11	1.34	1.38

*Continued on next page...*

*Continued from previous page...*

Mol	Chain	Res	Type	Atoms	Z	Observed(Å)	Ideal(Å)
1	F	66	CRO	CD2-CG2	2.04	1.43	1.39

All (33) bond angle outliers are listed below:

Mol	Chain	Res	Type	Atoms	Z	Observed(°)	Ideal(°)
1	A	66	CRO	CA2-C2-N3	10.04	108.12	103.37
1	F	66	CRO	O2-C2-CA2	-9.49	125.63	130.96
1	F	66	CRO	CA2-C2-N3	8.94	107.60	103.37
1	E	66	CRO	CA2-C2-N3	7.98	107.14	103.37
1	A	66	CRO	O2-C2-CA2	-7.09	126.98	130.96
1	E	66	CRO	O2-C2-CA2	-6.87	127.10	130.96
1	B	66	CRO	CB2-CA2-C2	5.60	128.96	122.28
1	B	66	CRO	CA1-C1-N3	5.55	132.09	124.85
1	B	66	CRO	CA2-C2-N3	5.55	106.00	103.37
1	E	66	CRO	N3-C1-N2	-5.18	107.87	111.45
1	B	66	CRO	N3-C1-N2	-5.12	107.91	111.45
1	B	66	CRO	CA2-N2-C1	5.11	109.54	105.77
1	A	66	CRO	N3-C1-N2	-4.56	108.29	111.45
1	B	66	CRO	CG2-CB2-CA2	-4.47	124.47	129.94
1	B	66	CRO	CB2-CA2-N2	-4.21	122.98	128.83
1	E	66	CRO	CB1-CA1-C1	4.18	120.08	110.19
1	F	66	CRO	CA3-N3-C1	-4.06	122.29	127.16
1	B	66	CRO	O2-C2-CA2	-3.62	128.93	130.96
1	A	66	CRO	CA2-N2-C1	3.52	108.36	105.77
1	E	66	CRO	O3-C3-CA3	-3.49	115.84	126.39
1	B	66	CRO	O3-C3-CA3	-3.28	116.49	126.39
1	F	66	CRO	CG2-CB2-CA2	-3.19	126.04	129.94
1	F	66	CRO	CA3-N3-C2	3.09	130.87	123.80
1	A	66	CRO	O3-C3-CA3	-3.07	117.11	126.39
1	E	66	CRO	CG2-CB2-CA2	-3.04	126.21	129.94
1	E	66	CRO	CE2-CD2-CG2	-2.96	117.39	121.25
1	F	66	CRO	O3-C3-CA3	-2.83	117.84	126.39
1	E	66	CRO	CD2-CG2-CD1	2.69	121.63	117.64
1	A	66	CRO	CB1-CA1-C1	2.69	116.56	110.19
1	F	66	CRO	C2-N3-C1	-2.32	106.79	107.97
1	E	66	CRO	CA2-N2-C1	2.24	107.42	105.77
1	A	66	CRO	OG1-CB1-CA1	-2.23	104.96	110.85
1	A	66	CRO	C2-CA2-N2	-2.20	107.39	108.93

There are no chirality outliers.

All (18) torsion outliers are listed below:



Mol	Chain	Res	Type	Atoms
1	B	66	CRO	N1-CA1-CB1-OG1
1	B	66	CRO	C1-CA1-CB1-OG1
1	E	66	CRO	N1-CA1-CB1-OG1
1	E	66	CRO	C1-CA1-CB1-OG1
1	E	66	CRO	C3-CA3-N3-C1
1	E	66	CRO	C3-CA3-N3-C2
1	E	66	CRO	N2-CA2-CB2-CG2
1	E	66	CRO	C2-CA2-CB2-CG2
1	F	66	CRO	N1-CA1-CB1-OG1
1	F	66	CRO	C1-CA1-CB1-OG1
1	F	66	CRO	C3-CA3-N3-C1
1	F	66	CRO	C3-CA3-N3-C2
1	B	66	CRO	N2-CA2-CB2-CG2
1	A	66	CRO	C1-CA1-CB1-OG1
1	A	66	CRO	N2-CA2-CB2-CG2
1	A	66	CRO	N1-CA1-CB1-OG1
1	B	66	CRO	C3-CA3-N3-C2
1	B	66	CRO	C2-CA2-CB2-CG2

There are no ring outliers.

4 monomers are involved in 12 short contacts:

Mol	Chain	Res	Type	Clashes	Symm-Clashes
1	B	66	CRO	5	0
1	E	66	CRO	1	0
1	A	66	CRO	4	0
1	F	66	CRO	2	0

## 5.5 Carbohydrates [i](#)

There are no oligosaccharides in this entry.

## 5.6 Ligand geometry [i](#)

4 ligands are modelled in this entry.

In the following table, the Counts columns list the number of bonds (or angles) for which Mogul statistics could be retrieved, the number of bonds (or angles) that are observed in the model and the number of bonds (or angles) that are defined in the Chemical Component Dictionary. The Link column lists molecule types, if any, to which the group is linked. The Z score for a bond length (or angle) is the number of standard deviations the observed value is removed from the

expected value. A bond length (or angle) with  $|Z| > 2$  is considered an outlier worth inspection. RMSZ is the root-mean-square of all Z scores of the bond lengths (or angles).

Mol	Type	Chain	Res	Link	Bond lengths			Bond angles		
					Counts	RMSZ	$\# Z  > 2$	Counts	RMSZ	$\# Z  > 2$
3	CEI	G	401	-	31,34,34	1.37	4 (12%)	38,46,46	1.47	4 (10%)
3	CEI	H	401	-	31,34,34	1.37	4 (12%)	38,46,46	1.38	8 (21%)
3	CEI	D	401	-	31,34,34	1.34	5 (16%)	38,46,46	1.36	4 (10%)
3	CEI	C	401	-	31,34,34	1.50	4 (12%)	38,46,46	1.24	4 (10%)

In the following table, the Chirals column lists the number of chiral outliers, the number of chiral centers analysed, the number of these observed in the model and the number defined in the Chemical Component Dictionary. Similar counts are reported in the Torsion and Rings columns. '-' means no outliers of that kind were identified.

Mol	Type	Chain	Res	Link	Chirals	Torsions	Rings
3	CEI	G	401	-	-	3/12/16/16	0/4/4/4
3	CEI	H	401	-	-	2/12/16/16	0/4/4/4
3	CEI	D	401	-	-	3/12/16/16	0/4/4/4
3	CEI	C	401	-	-	0/12/16/16	0/4/4/4

All (17) bond length outliers are listed below:

Mol	Chain	Res	Type	Atoms	Z	Observed(Å)	Ideal(Å)
3	C	401	CEI	C2-N1	4.05	1.44	1.35
3	H	401	CEI	C2-N1	4.02	1.44	1.35
3	G	401	CEI	C2-N1	3.90	1.44	1.35
3	C	401	CEI	C26-C8	3.43	1.54	1.51
3	D	401	CEI	C2-N1	3.35	1.43	1.35
3	D	401	CEI	C26-C8	3.32	1.54	1.51
3	G	401	CEI	C26-C8	3.12	1.53	1.51
3	C	401	CEI	C6-N7	-3.07	1.32	1.37
3	H	401	CEI	C9-N1	2.95	1.45	1.39
3	C	401	CEI	C9-N1	2.90	1.45	1.39
3	H	401	CEI	C6-N7	-2.89	1.32	1.37
3	G	401	CEI	C6-N7	-2.37	1.33	1.37
3	D	401	CEI	C6-N7	-2.30	1.33	1.37
3	G	401	CEI	C9-N1	2.26	1.44	1.39
3	D	401	CEI	O33-C2	-2.17	1.18	1.23
3	D	401	CEI	C9-N1	2.05	1.43	1.39
3	H	401	CEI	O33-C2	-2.05	1.19	1.23

All (20) bond angle outliers are listed below:

Mol	Chain	Res	Type	Atoms	Z	Observed(°)	Ideal(°)
3	D	401	CEI	C26-C8-N7	4.79	125.88	116.36
3	G	401	CEI	C8-C9-N1	-4.54	112.17	118.40
3	G	401	CEI	C26-C8-N7	4.28	124.86	116.36
3	H	401	CEI	C26-C8-N7	3.27	122.85	116.36
3	C	401	CEI	C27-C26-C8	-3.22	104.14	112.40
3	G	401	CEI	N1-C9-N4	2.97	125.08	117.45
3	D	401	CEI	C8-C9-N1	-2.91	114.40	118.40
3	D	401	CEI	C20-C19-C24	2.90	121.22	118.65
3	H	401	CEI	C8-C9-N1	-2.61	114.81	118.40
3	C	401	CEI	C10-C11-C12	-2.59	117.19	120.89
3	H	401	CEI	C11-C10-C2	-2.44	105.35	112.57
3	C	401	CEI	C8-N7-C6	2.44	120.67	117.67
3	G	401	CEI	C20-C19-C24	2.43	120.80	118.65
3	H	401	CEI	C16-C11-C12	2.42	121.96	118.17
3	H	401	CEI	C20-C19-C24	2.36	120.74	118.65
3	H	401	CEI	N1-C9-N4	2.35	123.47	117.45
3	H	401	CEI	C10-C11-C12	-2.32	117.57	120.89
3	H	401	CEI	C32-C27-C28	2.22	121.65	118.17
3	C	401	CEI	C11-C10-C2	-2.21	106.02	112.57
3	D	401	CEI	C10-C2-N1	-2.09	110.45	114.77

There are no chirality outliers.

All (8) torsion outliers are listed below:

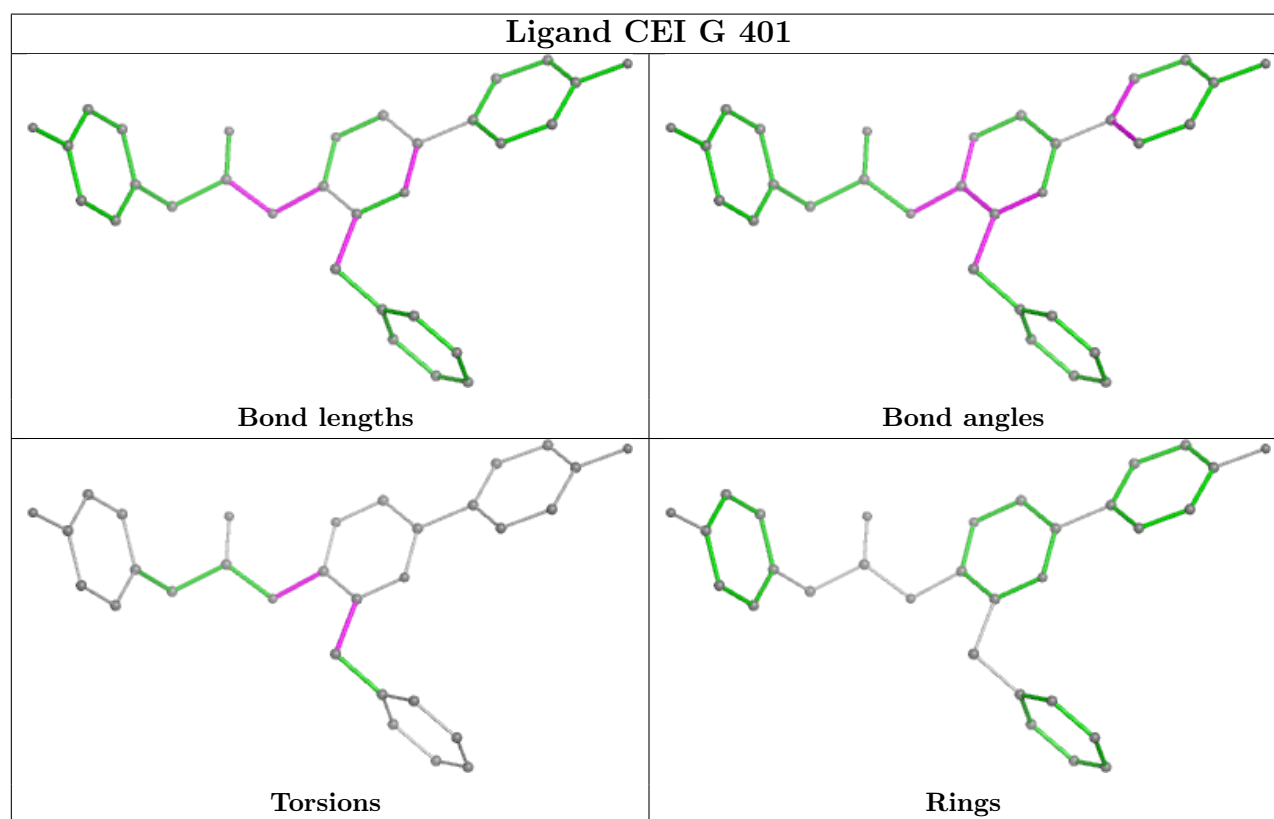
Mol	Chain	Res	Type	Atoms
3	G	401	CEI	C27-C26-C8-C9
3	G	401	CEI	C27-C26-C8-N7
3	H	401	CEI	C27-C26-C8-N7
3	D	401	CEI	C8-C9-N1-C2
3	G	401	CEI	C8-C9-N1-C2
3	D	401	CEI	C11-C10-C2-O33
3	H	401	CEI	C27-C26-C8-C9
3	D	401	CEI	C11-C10-C2-N1

There are no ring outliers.

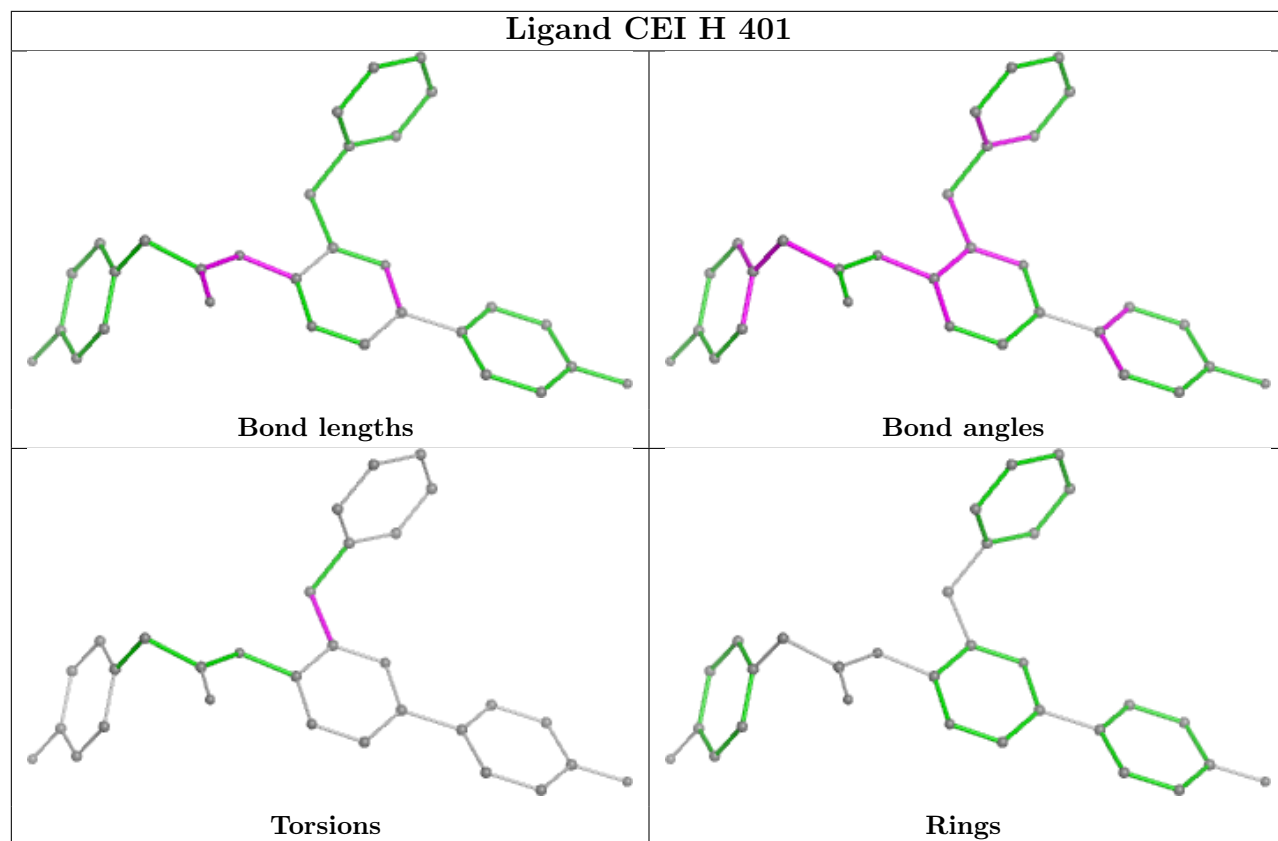
4 monomers are involved in 11 short contacts:

Mol	Chain	Res	Type	Clashes	Symm-Clashes
3	G	401	CEI	1	0
3	H	401	CEI	5	0
3	D	401	CEI	1	0
3	C	401	CEI	4	0

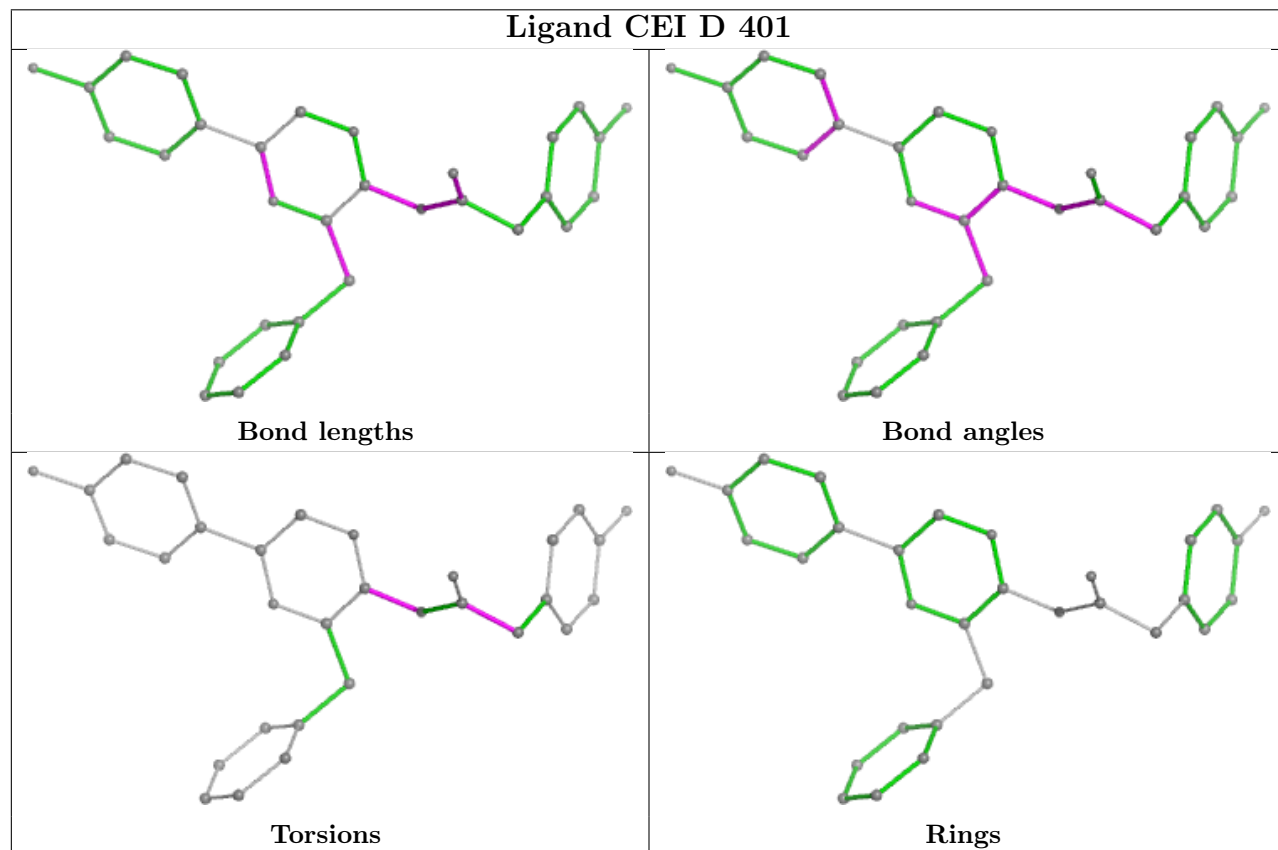
The following is a two-dimensional graphical depiction of Mogul quality analysis of bond lengths, bond angles, torsion angles, and ring geometry for all instances of the Ligand of Interest. In addition, ligands with molecular weight > 250 and outliers as shown on the validation Tables will also be included. For torsion angles, if less than 5% of the Mogul distribution of torsion angles is within 10 degrees of the torsion angle in question, then that torsion angle is considered an outlier. Any bond that is central to one or more torsion angles identified as an outlier by Mogul will be highlighted in the graph. For rings, the root-mean-square deviation (RMSD) between the ring in question and similar rings identified by Mogul is calculated over all ring torsion angles. If the average RMSD is greater than 60 degrees and the minimal RMSD between the ring in question and any Mogul-identified rings is also greater than 60 degrees, then that ring is considered an outlier. The outliers are highlighted in purple. The color gray indicates Mogul did not find sufficient equivalents in the CSD to analyse the geometry.

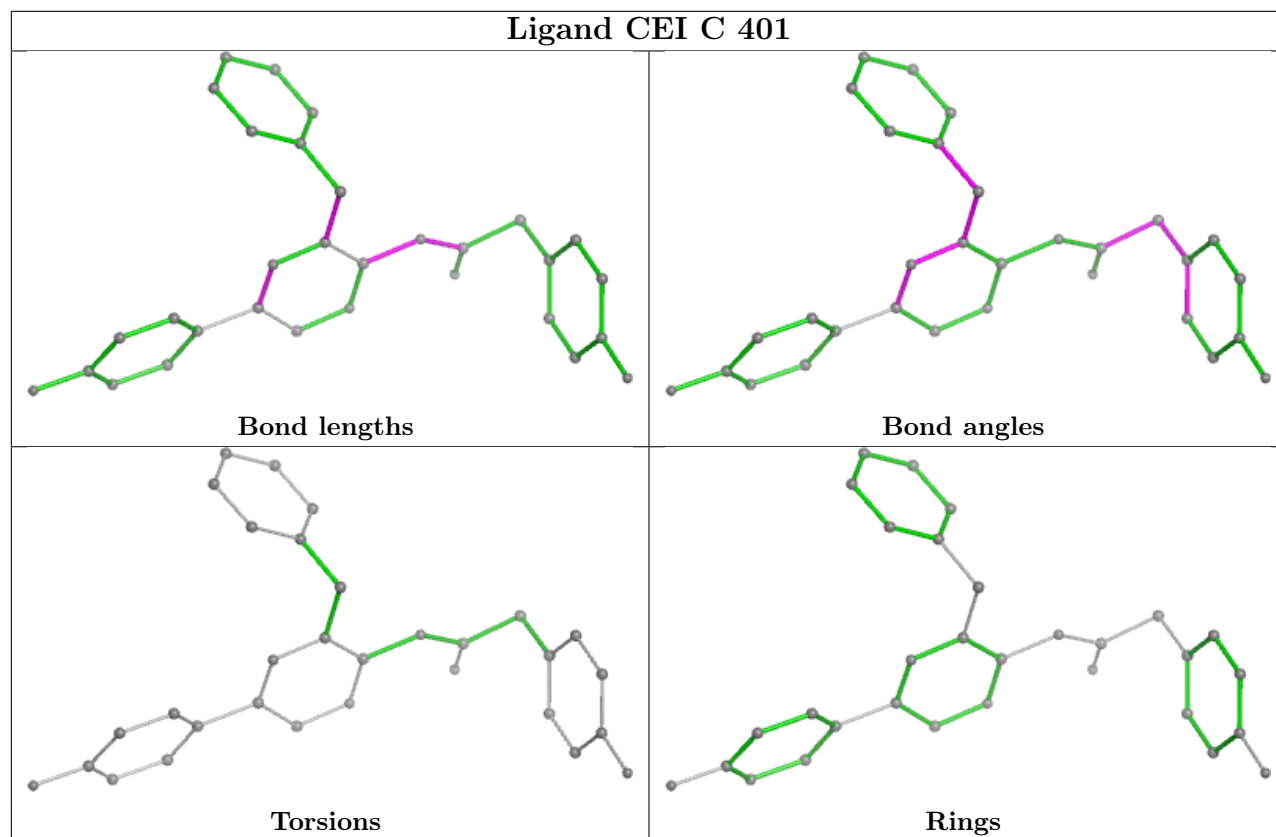


## Ligand CEI H 401



## Ligand CEI D 401





## 5.7 Other polymers [i](#)

There are no such residues in this entry.

## 5.8 Polymer linkage issues [i](#)

There are no chain breaks in this entry.

## 6 Fit of model and data [i](#)

### 6.1 Protein, DNA and RNA chains [i](#)

In the following table, the column labelled ‘#RSRZ> 2’ contains the number (and percentage) of RSRZ outliers, followed by percent RSRZ outliers for the chain as percentile scores relative to all X-ray entries and entries of similar resolution. The OWAB column contains the minimum, median, 95<sup>th</sup> percentile and maximum values of the occupancy-weighted average B-factor per residue. The column labelled ‘Q< 0.9’ lists the number of (and percentage) of residues with an average occupancy less than 0.9.

Mol	Chain	Analysed	<RSRZ>	#RSRZ>2	OWAB(Å <sup>2</sup> )	Q<0.9
1	A	230/231 (99%)	-0.82	2 (0%) 81 78	48, 86, 127, 144	0
1	B	229/231 (99%)	-0.84	0 100 100	49, 87, 107, 134	0
1	E	230/231 (99%)	-0.83	0 100 100	52, 90, 126, 142	0
1	F	229/231 (99%)	-0.83	0 100 100	56, 87, 112, 131	0
2	C	316/319 (99%)	-0.98	0 100 100	33, 67, 92, 113	1 (0%)
2	D	308/319 (96%)	-0.92	0 100 100	35, 71, 93, 115	1 (0%)
2	G	308/319 (96%)	-0.81	0 100 100	37, 76, 101, 116	1 (0%)
2	H	318/319 (99%)	-1.03	0 100 100	45, 65, 87, 102	0
All	All	2168/2200 (98%)	-0.89	2 (0%) 92 91	33, 76, 112, 144	3 (0%)

All (2) RSRZ outliers are listed below:

Mol	Chain	Res	Type	RSRZ
1	A	11	VAL	2.6
1	A	8	LEU	2.3

### 6.2 Non-standard residues in protein, DNA, RNA chains [i](#)

In the following table, the Atoms column lists the number of modelled atoms in the group and the number defined in the chemical component dictionary. The B-factors column lists the minimum, median, 95<sup>th</sup> percentile and maximum values of B factors of atoms in the group. The column labelled ‘Q< 0.9’ lists the number of atoms with occupancy less than 0.9.

Mol	Type	Chain	Res	Atoms	RSCC	RSR	B-factors(Å <sup>2</sup> )	Q<0.9
1	CRO	A	66	21/23	0.99	0.07	59,73,93,102	0
1	CRO	B	66	21/23	0.99	0.04	65,90,107,115	0
1	CRO	E	66	21/23	0.99	0.05	55,83,98,104	0
1	CRO	F	66	21/23	0.99	0.06	72,87,109,118	0

## 6.3 Carbohydrates [i](#)

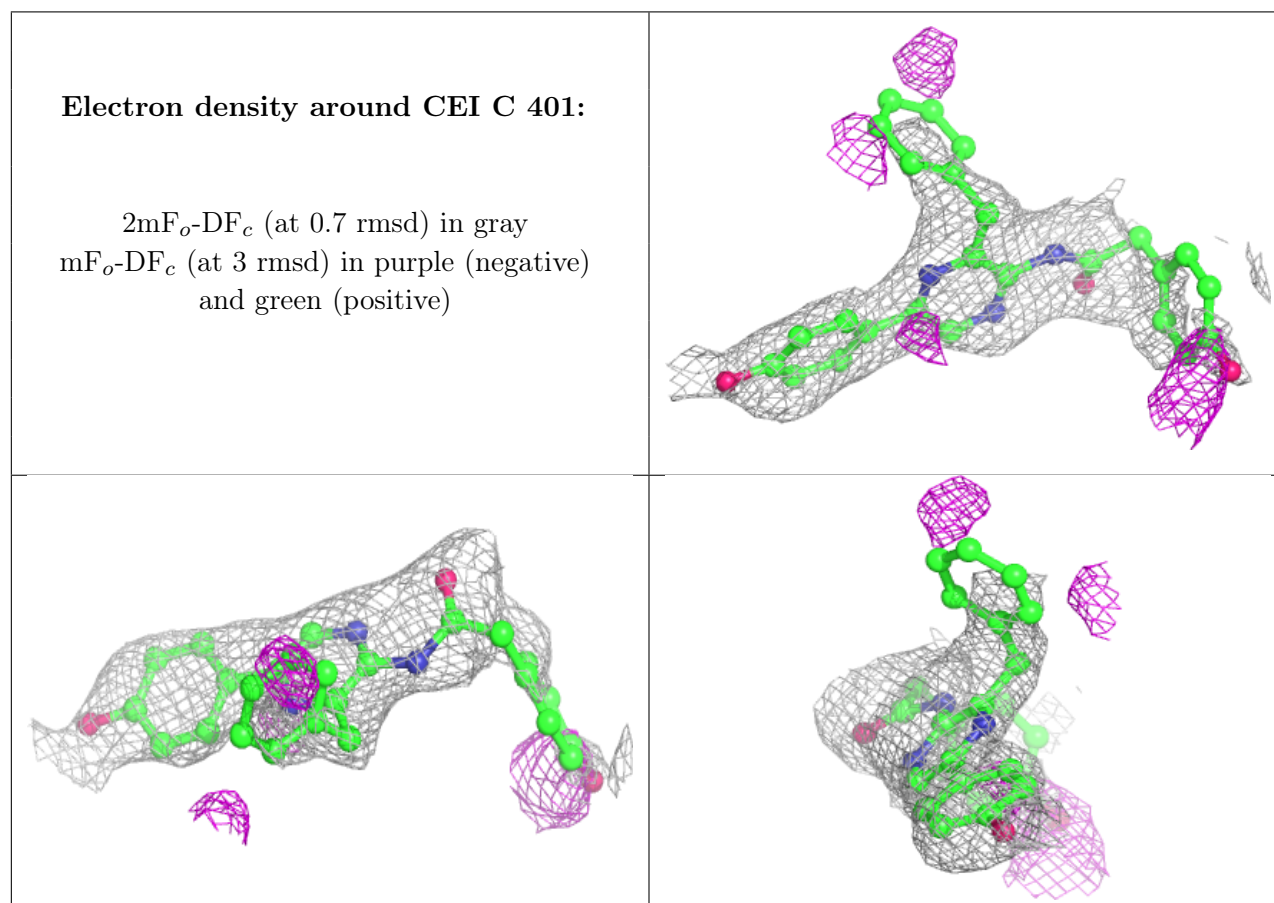
There are no oligosaccharides in this entry.

## 6.4 Ligands [i](#)

In the following table, the Atoms column lists the number of modelled atoms in the group and the number defined in the chemical component dictionary. The B-factors column lists the minimum, median, 95<sup>th</sup> percentile and maximum values of B factors of atoms in the group. The column labelled 'Q< 0.9' lists the number of atoms with occupancy less than 0.9.

Mol	Type	Chain	Res	Atoms	RSCC	RSR	B-factors( $\text{\AA}^2$ )	Q<0.9
3	CEI	C	401	31/31	0.98	0.07	67,79,95,101	0
3	CEI	D	401	31/31	0.99	0.07	58,82,118,121	0
3	CEI	G	401	31/31	0.99	0.07	66,88,120,123	0
3	CEI	H	401	31/31	0.99	0.07	51,80,103,108	0

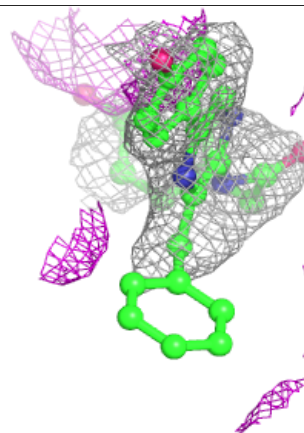
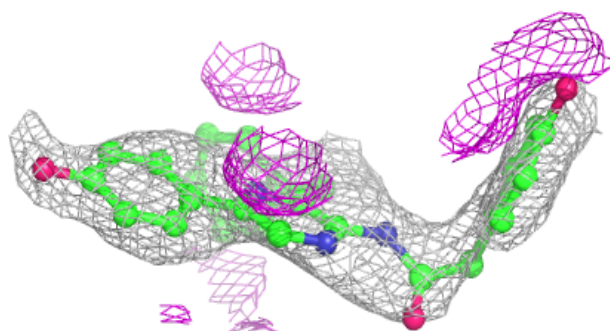
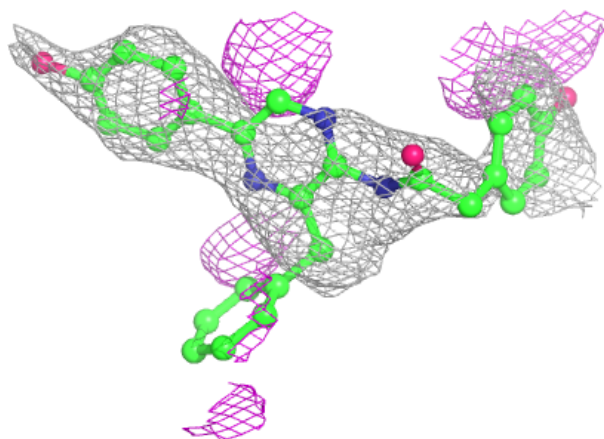
The following is a graphical depiction of the model fit to experimental electron density of all instances of the Ligand of Interest. In addition, ligands with molecular weight > 250 and outliers as shown on the geometry validation Tables will also be included. Each fit is shown from different orientation to approximate a three-dimensional view.



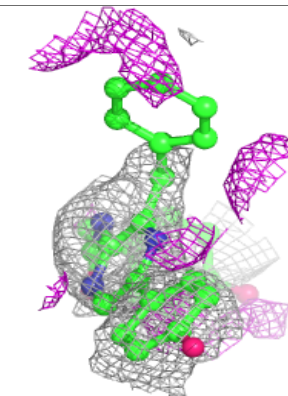
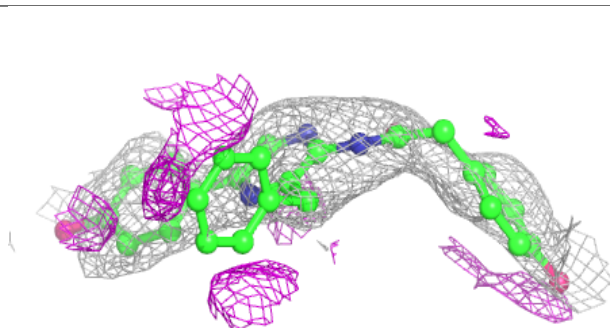
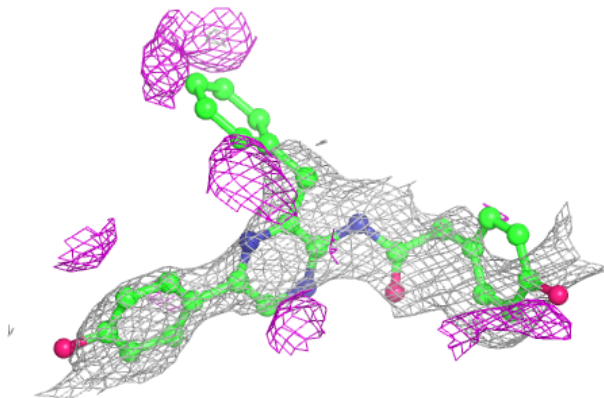


**Electron density around CEI D 401:**

$2mF_o-DF_c$  (at 0.7 rmsd) in gray  
 $mF_o-DF_c$  (at 3 rmsd) in purple (negative)  
and green (positive)

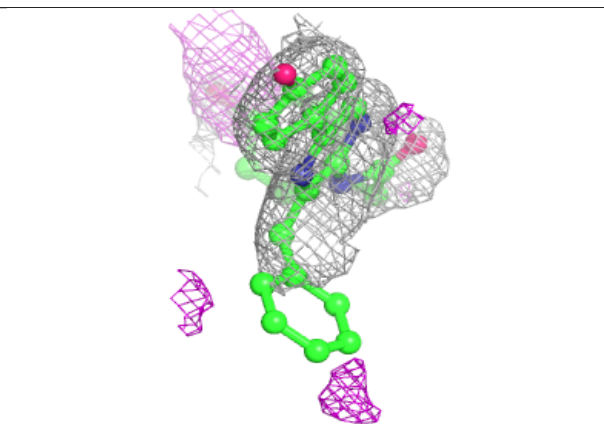
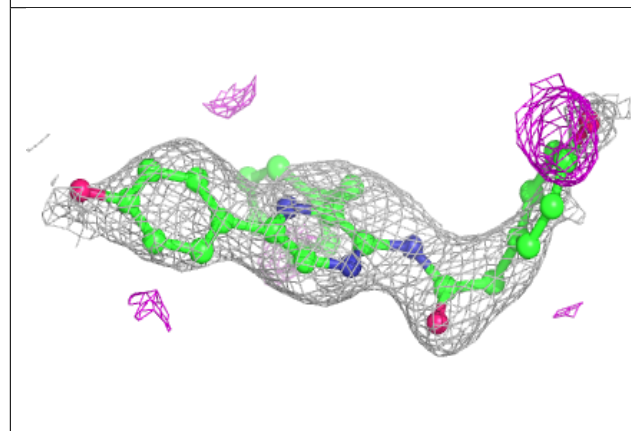
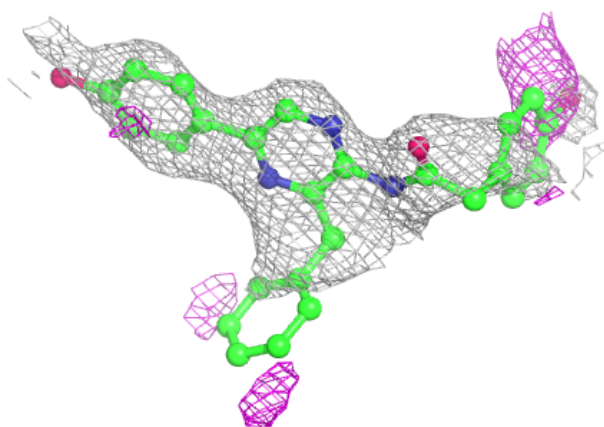
**Electron density around CEI G 401:**

$2mF_o-DF_c$  (at 0.7 rmsd) in gray  
 $mF_o-DF_c$  (at 3 rmsd) in purple (negative)  
and green (positive)



**Electron density around CEI H 401:**

$2mF_o-DF_c$  (at 0.7 rmsd) in gray  
 $mF_o-DF_c$  (at 3 rmsd) in purple (negative)  
and green (positive)



## 6.5 Other polymers [i](#)

There are no such residues in this entry.