



Full wwPDB X-ray Structure Validation Report ⓘ

May 3, 2025 – 09:57 AM EDT

PDB ID : 3RT4 / pdb_00003rt4
Title : Structural Basis of Recognition of Pathogen-associated Molecular Patterns and Inhibition of Proinflammatory Cytokines by Camel Peptidoglycan Recognition Protein
Authors : Sharma, P.; Dube, D.; Singh, A.; Mishra, B.; Singh, N.; Sinha, M.; Dey, S.; Kaur, P.; Mitra, D.K.; Sharma, S.; Singh, T.P.
Deposited on : 2011-05-03
Resolution : 1.70 Å(reported)

This is a Full wwPDB X-ray Structure Validation Report for a publicly released PDB entry.

We welcome your comments at validation@mail.wwpdb.org

A user guide is available at

<https://www.wwpdb.org/validation/2017/XrayValidationReportHelp>

with specific help available everywhere you see the ⓘ symbol.

The types of validation reports are described at

<http://www.wwpdb.org/validation/2017/FAQs#types>.

The following versions of software and data (see [references](#) ①) were used in the production of this report:

MolProbity	:	4-5-2 with Phenix2.0rc1
Mogul	:	2022.3.0, CSD as543be (2022)
Xtriage (Phenix)	:	2.0rc1
EDS	:	3.0
buster-report	:	1.1.7 (2018)
Percentile statistics	:	20231227.v01 (using entries in the PDB archive December 27th 2023)
CCP4	:	9.0.006 (Gargrove)
Density-Fitness	:	1.0.12
Ideal geometry (proteins)	:	Engh & Huber (2001)
Ideal geometry (DNA, RNA)	:	Parkinson et al. (1996)
Validation Pipeline (wwPDB-VP)	:	2.43.1

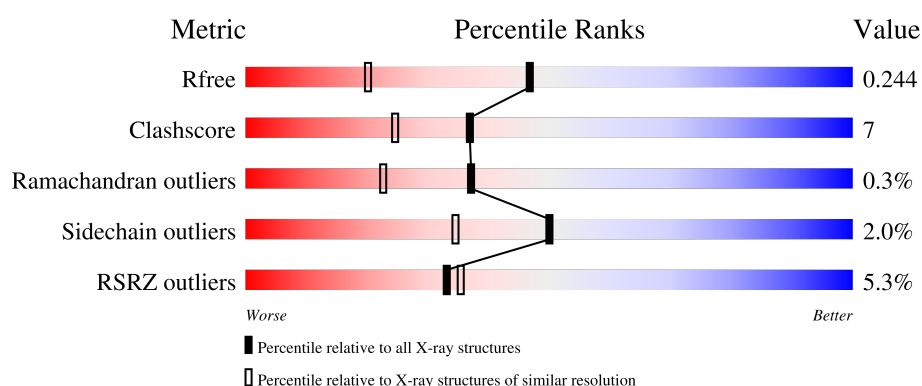
1 Overall quality at a glance

The following experimental techniques were used to determine the structure:

X-RAY DIFFRACTION

The reported resolution of this entry is 1.70 Å.

Percentile scores (ranging between 0-100) for global validation metrics of the entry are shown in the following graphic. The table shows the number of entries on which the scores are based.



Metric	Whole archive (#Entries)	Similar resolution (#Entries, resolution range(Å))
R_{free}	164625	5161 (1.70-1.70)
Clashscore	180529	5671 (1.70-1.70)
Ramachandran outliers	177936	5594 (1.70-1.70)
Sidechain outliers	177891	5594 (1.70-1.70)
RSRZ outliers	164620	5159 (1.70-1.70)

The table below summarises the geometric issues observed across the polymeric chains and their fit to the electron density. The red, orange, yellow and green segments of the lower bar indicate the fraction of residues that contain outliers for ≥ 3 , 2, 1 and 0 types of geometric quality criteria respectively. A grey segment represents the fraction of residues that are not modelled. The numeric value for each fraction is indicated below the corresponding segment, with a dot representing fractions $\leq 5\%$. The upper red bar (where present) indicates the fraction of residues that have poor fit to the electron density. The numeric value is given above the bar.

Mol	Chain	Length	Quality of chain
1	A	171	<div> <div>4%</div> <div>83%</div> <div>15%</div> <div>..</div> </div>
1	B	171	<div> <div>2%</div> <div>86%</div> <div>13%</div> <div>.</div> </div>
1	C	171	<div> <div>6%</div> <div>81%</div> <div>18%</div> <div>.</div> </div>
1	D	171	<div> <div>9%</div> <div>75%</div> <div>21%</div> <div>.</div> </div>

2 Entry composition ⓘ

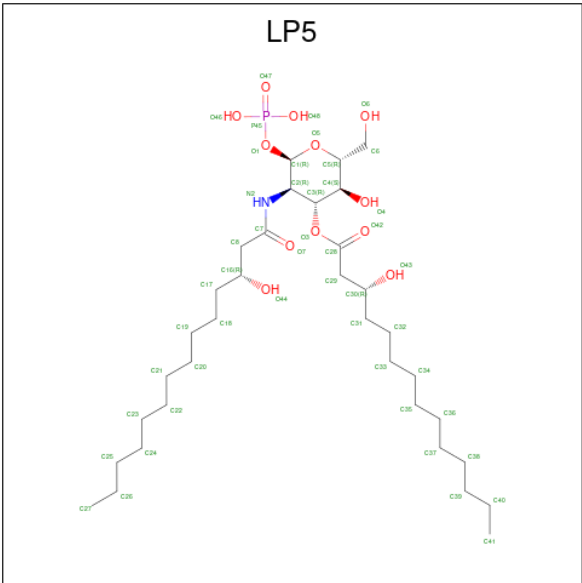
There are 4 unique types of molecules in this entry. The entry contains 6185 atoms, of which 0 are hydrogens and 0 are deuteriums.

In the tables below, the ZeroOcc column contains the number of atoms modelled with zero occupancy, the AltConf column contains the number of residues with at least one atom in alternate conformation and the Trace column contains the number of residues modelled with at most 2 atoms.

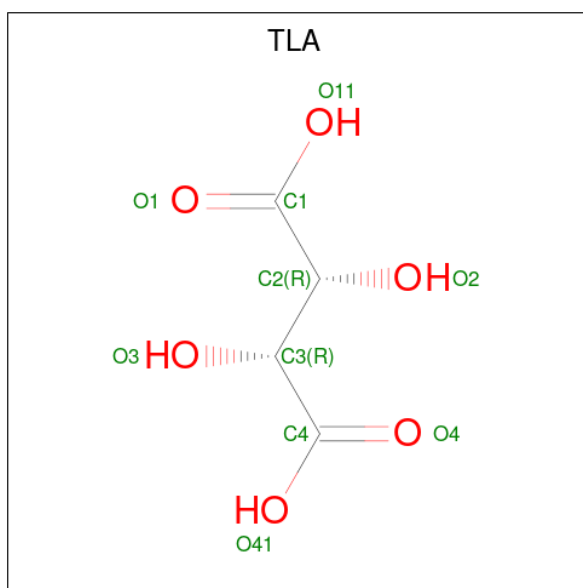
- Molecule 1 is a protein called Peptidoglycan recognition protein 1.

Mol	Chain	Residues	Atoms					ZeroOcc	AltConf	Trace
1	A	171	Total	C	N	O	S	0	0	0
			1336	834	254	240	8			
1	B	171	Total	C	N	O	S	0	0	0
			1336	834	254	240	8			
1	C	171	Total	C	N	O	S	0	0	0
			1336	834	254	240	8			
1	D	171	Total	C	N	O	S	0	0	0
			1336	834	254	240	8			

- Molecule 2 is (R)-((2R,3S,4R,5R,6R)-3-HYDROXY-2-(HYDROXYMETHYL)-5-((R)-3-HYDROXYTETRADECANAMIDO)-6-(PHOSPHONOOXY)TETRAHYDRO-2H-PYRAN-4-YL) 3-HYDROXYTETRADECANOATE (CCD ID: LP5) (formula: C₃₄H₆₆NO₁₂P).



- Molecule 3 is L(+)-TARTARIC ACID (CCD ID: TLA) (formula: $C_4H_6O_6$).

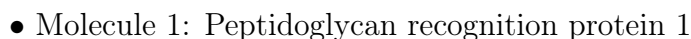
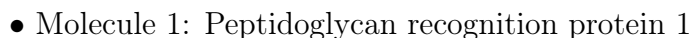
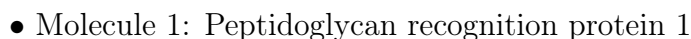


Mol	Chain	Residues	Atoms			ZeroOcc	AltConf
3	C	1	Total	C	O	0	0
			10	4	6		

- Molecule 4 is water.

Mol	Chain	Residues	Atoms		ZeroOcc	AltConf
4	A	194	Total	O	0	0
			194	194		
4	B	222	Total	O	0	0
			222	222		
4	C	193	Total	O	0	0
			193	193		
4	D	174	Total	O	0	0
			174	174		

- Molecule 1: Peptidoglycan recognition protein 1



4 Data and refinement statistics

Property	Value	Source
Space group	I 2 2 2	Depositor
Cell constants a, b, c, α , β , γ	87.14Å 100.79Å 161.86Å 90.00° 90.00° 90.00°	Depositor
Resolution (Å)	32.13 – 1.70 32.13 – 1.70	Depositor EDS
% Data completeness (in resolution range)	99.6 (32.13-1.70) 99.7 (32.13-1.70)	Depositor EDS
R_{merge}	(Not available)	Depositor
R_{sym}	0.04	Depositor
$\langle I/\sigma(I) \rangle$ ¹	2.15 (at 1.70Å)	Xtriage
Refinement program	CNS 1.2	Depositor
R, R_{free}	0.218 , 0.232 0.213 , 0.244	Depositor DCC
R_{free} test set	3944 reflections (5.03%)	wwPDB-VP
Wilson B-factor (Å ²)	22.7	Xtriage
Anisotropy	0.526	Xtriage
Bulk solvent k_{sol} (e/Å ³), B_{sol} (Å ²)	0.35 , 36.6	EDS
L-test for twinning ²	$\langle L \rangle = 0.47$, $\langle L^2 \rangle = 0.30$	Xtriage
Estimated twinning fraction	No twinning to report.	Xtriage
F_o, F_c correlation	0.95	EDS
Total number of atoms	6185	wwPDB-VP
Average B, all atoms (Å ²)	27.0	wwPDB-VP

Xtriage's analysis on translational NCS is as follows: *The largest off-origin peak in the Patterson function is 5.15% of the height of the origin peak. No significant pseudotranslation is detected.*

¹Intensities estimated from amplitudes.

²Theoretical values of $\langle |L| \rangle$, $\langle L^2 \rangle$ for acentric reflections are 0.5, 0.333 respectively for untwinned datasets, and 0.375, 0.2 for perfectly twinned datasets.

5 Model quality [i](#)

5.1 Standard geometry [i](#)

Bond lengths and bond angles in the following residue types are not validated in this section: LP5, TLA

The Z score for a bond length (or angle) is the number of standard deviations the observed value is removed from the expected value. A bond length (or angle) with $|Z| > 5$ is considered an outlier worth inspection. RMSZ is the root-mean-square of all Z scores of the bond lengths (or angles).

Mol	Chain	Bond lengths		Bond angles	
		RMSZ	$\# Z > 5$	RMSZ	$\# Z > 5$
1	A	0.81	1/1373 (0.1%)	1.24	11/1871 (0.6%)
1	B	0.80	0/1373	1.20	8/1871 (0.4%)
1	C	0.78	1/1373 (0.1%)	1.18	9/1871 (0.5%)
1	D	0.89	2/1373 (0.1%)	1.24	9/1871 (0.5%)
All	All	0.82	4/5492 (0.1%)	1.21	37/7484 (0.5%)

Chiral center outliers are detected by calculating the chiral volume of a chiral center and verifying if the center is modelled as a planar moiety or with the opposite hand. A planarity outlier is detected by checking planarity of atoms in a peptide group, atoms in a mainchain group or atoms of a sidechain that are expected to be planar.

Mol	Chain	#Chirality outliers	#Planarity outliers
1	A	0	1

All (4) bond length outliers are listed below:

Mol	Chain	Res	Type	Atoms	Z	Observed(Å)	Ideal(Å)
1	D	108	MET	SD-CE	-7.31	1.61	1.79
1	D	8	SER	N-CA	6.46	1.55	1.46
1	A	6	CYS	CA-C	5.60	1.59	1.52
1	C	101	ILE	CA-CB	5.32	1.60	1.54

All (37) bond angle outliers are listed below:

Mol	Chain	Res	Type	Atoms	Z	Observed(°)	Ideal(°)
1	A	116	PRO	N-CA-C	-9.41	100.51	110.58
1	B	3	PRO	N-CA-C	9.04	121.73	110.70
1	A	3	PRO	N-CA-C	8.41	120.95	110.70
1	B	116	PRO	N-CA-C	-8.00	102.03	110.58
1	D	145	GLY	N-CA-C	-7.23	102.24	112.37

Continued on next page...

Continued from previous page...

Mol	Chain	Res	Type	Atoms	Z	Observed(°)	Ideal(°)
1	C	69	VAL	N-CA-C	-6.78	99.81	109.51
1	D	18	LEU	N-CA-C	-6.69	101.07	110.50
1	C	18	LEU	N-CA-C	-6.64	101.14	110.50
1	A	100	PRO	N-CA-C	6.52	122.05	114.03
1	D	95	GLY	CA-C-N	6.41	126.10	119.56
1	D	95	GLY	C-N-CA	6.41	126.10	119.56
1	B	50	ALA	N-CA-C	-6.25	104.47	111.28
1	B	32	TYR	N-CA-C	6.10	119.49	109.85
1	D	153	LEU	N-CA-C	-6.04	105.40	112.89
1	A	88	ASN	N-CA-C	6.00	120.72	113.17
1	C	32	TYR	N-CA-C	5.89	119.14	109.72
1	C	111	TYR	N-CA-C	5.89	119.23	112.57
1	D	70	GLY	N-CA-C	5.86	121.25	114.16
1	C	112	MET	N-CA-C	-5.82	104.86	111.14
1	A	153	LEU	N-CA-C	-5.60	105.95	112.89
1	A	18	LEU	N-CA-C	-5.58	102.64	110.50
1	B	88	ASN	N-CA-C	5.55	120.94	113.72
1	D	44	ASP	CA-C-O	5.48	126.14	119.78
1	B	18	LEU	N-CA-C	-5.47	102.90	110.35
1	A	95	GLY	CA-C-N	5.39	125.00	119.56
1	A	95	GLY	C-N-CA	5.39	125.00	119.56
1	B	69	VAL	N-CA-C	-5.34	101.88	109.51
1	A	98	TRP	N-CA-C	5.33	119.88	112.90
1	B	135	GLY	N-CA-C	-5.32	107.98	115.32
1	D	78	ASP	N-CA-C	-5.32	106.82	113.15
1	A	32	TYR	N-CA-C	5.31	118.05	109.40
1	C	40	GLY	N-CA-C	5.12	119.92	112.55
1	D	88	ASN	N-CA-C	5.12	120.37	113.72
1	C	87	TRP	N-CA-C	5.11	119.23	112.89
1	C	166	TRP	N-CA-C	5.04	117.74	110.28
1	C	88	ASN	N-CA-C	5.03	120.26	113.72
1	A	78	ASP	N-CA-C	-5.00	107.15	113.20

There are no chirality outliers.

All (1) planarity outliers are listed below:

Mol	Chain	Res	Type	Group
1	A	170	ARG	Sidechain

5.2 Too-close contacts ⓘ

In the following table, the Non-H and H(model) columns list the number of non-hydrogen atoms and hydrogen atoms in the chain respectively. The H(added) column lists the number of hydrogen atoms added and optimized by MolProbity. The Clashes column lists the number of clashes within the asymmetric unit, whereas Symm-Clashes lists symmetry-related clashes.

Mol	Chain	Non-H	H(model)	H(added)	Clashes	Symm-Clashes
1	A	1336	0	1288	15	0
1	B	1336	0	1288	11	0
1	C	1336	0	1288	21	0
1	D	1336	0	1288	32	0
2	C	48	0	64	13	0
3	C	10	0	4	0	0
4	A	194	0	0	0	0
4	B	222	0	0	0	0
4	C	193	0	0	1	0
4	D	174	0	0	1	0
All	All	6185	0	5220	74	0

The all-atom clashscore is defined as the number of clashes found per 1000 atoms (including hydrogen atoms). The all-atom clashscore for this structure is 7.

All (74) close contacts within the same asymmetric unit are listed below, sorted by their clash magnitude.

Atom-1	Atom-2	Interatomic distance (Å)	Clash overlap (Å)
1:D:62:ARG:HG2	1:D:62:ARG:HH21	1.31	0.92
1:D:62:ARG:HH21	1:D:62:ARG:CG	1.90	0.84
1:A:126:ASN:ND2	1:B:8:SER:H	1.76	0.83
1:D:74:LEU:HD22	1:D:108:MET:HE3	1.63	0.79
1:A:126:ASN:HD21	1:B:8:SER:H	1.36	0.73
1:C:66:TRP:HE1	2:C:501:LP5:H291	1.56	0.70
1:C:85:ARG:HD2	1:C:91:GLY:HA2	1.74	0.69
1:C:112:MET:HE3	1:C:157:ASP:CG	2.18	0.69
1:C:95:GLY:H	2:C:501:LP5:H82	1.58	0.68
1:B:158:ARG:O	1:B:161:GLU:HG3	1.97	0.64
1:A:3:PRO:HD2	1:A:4:PRO:HD3	1.79	0.64
1:D:85:ARG:HD2	1:D:91:GLY:HA2	1.80	0.62
1:C:66:TRP:NE1	2:C:501:LP5:H291	2.14	0.62
1:C:66:TRP:HE1	2:C:501:LP5:H312	1.63	0.61
1:D:144:LYS:HD3	1:D:170:ARG:O	1.99	0.61
1:C:43:CYS:O	1:C:77:GLU:HB2	2.01	0.61
1:A:85:ARG:HD2	1:A:91:GLY:HA2	1.83	0.60

Continued on next page...

Continued from previous page...

Atom-1	Atom-2	Interatomic distance (Å)	Clash overlap (Å)
1:B:144:LYS:HE2	1:B:170:ARG:O	2.01	0.60
2:C:501:LP5:H381	1:D:144:LYS:HE3	1.84	0.60
2:C:501:LP5:H272	1:D:99:ASN:HD21	1.67	0.59
1:D:77:GLU:HG2	1:D:117:PRO:HD2	1.85	0.57
1:A:170:ARG:HG2	1:A:170:ARG:NH1	2.18	0.57
1:C:95:GLY:N	2:C:501:LP5:H82	2.18	0.57
1:B:98:TRP:CD1	1:B:149:VAL:HB	2.41	0.56
2:C:501:LP5:H2	1:D:96:PRO:CG	2.36	0.56
1:C:112:MET:CE	1:C:157:ASP:CG	2.79	0.55
1:D:62:ARG:HG2	1:D:62:ARG:NH2	2.12	0.54
1:A:126:ASN:ND2	1:B:8:SER:N	2.51	0.54
1:D:77:GLU:HG2	1:D:117:PRO:CD	2.38	0.53
1:B:43:CYS:O	1:B:77:GLU:HB2	2.09	0.52
1:D:92:ALA:HA	1:D:99:ASN:ND2	2.25	0.52
1:C:99:ASN:HB2	2:C:501:LP5:O46	2.10	0.52
1:B:85:ARG:HD2	1:B:91:GLY:HA2	1.92	0.51
1:D:13:ARG:HB2	4:D:174:HOH:O	2.10	0.51
1:C:96:PRO:HA	2:C:501:LP5:O46	2.11	0.51
1:A:58:SER:O	1:A:62:ARG:HB2	2.10	0.51
1:A:170:ARG:HG2	1:A:170:ARG:HH11	1.76	0.51
1:D:115:VAL:HG12	1:D:158:ARG:HB3	1.93	0.51
1:D:3:PRO:HB2	1:D:4:PRO:HD3	1.93	0.49
1:D:62:ARG:CG	1:D:62:ARG:NH2	2.60	0.49
1:C:90:LYS:HE2	4:C:195:HOH:O	2.12	0.49
1:A:3:PRO:CD	1:A:4:PRO:HD3	2.42	0.48
2:C:501:LP5:C38	1:D:144:LYS:HE3	2.42	0.48
1:D:43:CYS:O	1:D:77:GLU:HB2	2.14	0.48
1:A:43:CYS:O	1:A:77:GLU:HB2	2.14	0.47
1:B:157:ASP:O	1:B:161:GLU:HG2	2.14	0.47
1:C:77:GLU:OE1	1:C:114:ARG:NH1	2.47	0.47
1:D:59:TYR:O	1:D:63:ASN:HB2	2.15	0.47
1:D:58:SER:OG	1:D:62:ARG:HD2	2.16	0.46
1:D:92:ALA:HA	1:D:99:ASN:HD21	1.81	0.45
1:D:158:ARG:HD2	1:D:158:ARG:HA	1.66	0.45
1:D:127:LEU:O	1:D:130:CYS:HB3	2.16	0.45
2:C:501:LP5:H273	1:D:95:GLY:HA2	1.99	0.44
1:C:3:PRO:HA	1:C:4:PRO:HD3	1.76	0.44
1:A:23:ARG:CG	1:A:23:ARG:HH21	2.30	0.44
1:A:165:THR:O	1:B:1:GLU:N	2.51	0.44
1:D:111:TYR:O	1:D:158:ARG:HB2	2.18	0.43
1:C:153:LEU:HD23	1:C:153:LEU:HA	1.72	0.43

Continued on next page...

Continued from previous page...

Atom-1	Atom-2	Interatomic distance (Å)	Clash overlap (Å)
1:C:77:GLU:CD	1:C:114:ARG:HH11	2.26	0.43
1:D:41:SER:O	1:D:52:GLN:NE2	2.52	0.43
1:A:71:TYR:CD1	1:A:106:SER:HB2	2.54	0.43
1:C:12:ARG:HA	1:C:15:TRP:NE1	2.33	0.43
1:C:71:TYR:CD2	1:C:106:SER:HB2	2.53	0.43
1:B:7:GLY:HA2	1:B:126:ASN:OD1	2.20	0.42
1:D:105:ILE:O	1:D:105:ILE:HG13	2.18	0.42
1:D:74:LEU:CD2	1:D:108:MET:HE3	2.41	0.41
1:C:151:PRO:HD3	1:D:66:TRP:CH2	2.56	0.41
1:D:153:LEU:HD23	1:D:153:LEU:HA	1.86	0.41
1:D:38:THR:O	1:D:39:ALA:HB3	2.20	0.41
1:A:68:ASP:O	1:A:69:VAL:C	2.64	0.41
1:C:77:GLU:O	1:C:119:ARG:NE	2.54	0.41
2:C:501:LP5:O43	1:D:150:GLN:NE2	2.53	0.41
1:A:145:GLY:O	1:A:146:HIS:C	2.64	0.41
1:C:107:PHE:CD1	1:C:159:LEU:HD21	2.55	0.40

There are no symmetry-related clashes.

5.3 Torsion angles ⓘ

5.3.1 Protein backbone ⓘ

In the following table, the Percentiles column shows the percent Ramachandran outliers of the chain as a percentile score with respect to all X-ray entries followed by that with respect to entries of similar resolution.

The Analysed column shows the number of residues for which the backbone conformation was analysed, and the total number of residues.

Mol	Chain	Analysed	Favoured	Allowed	Outliers	Percentiles	
1	A	169/171 (99%)	164 (97%)	4 (2%)	1 (1%)	22	10
1	B	169/171 (99%)	164 (97%)	5 (3%)	0	100	100
1	C	169/171 (99%)	158 (94%)	10 (6%)	1 (1%)	22	10
1	D	169/171 (99%)	160 (95%)	9 (5%)	0	100	100
All	All	676/684 (99%)	646 (96%)	28 (4%)	2 (0%)	37	23

All (2) Ramachandran outliers are listed below:

Mol	Chain	Res	Type
1	C	4	PRO
1	A	3	PRO

5.3.2 Protein sidechains [i](#)

In the following table, the Percentiles column shows the percent sidechain outliers of the chain as a percentile score with respect to all X-ray entries followed by that with respect to entries of similar resolution.

The Analysed column shows the number of residues for which the sidechain conformation was analysed, and the total number of residues.

Mol	Chain	Analysed	Rotameric	Outliers	Percentiles	
1	A	139/139 (100%)	137 (99%)	2 (1%)	62	49
1	B	139/139 (100%)	136 (98%)	3 (2%)	47	30
1	C	139/139 (100%)	138 (99%)	1 (1%)	81	75
1	D	139/139 (100%)	134 (96%)	5 (4%)	30	14
All	All	556/556 (100%)	545 (98%)	11 (2%)	50	34

All (11) residues with a non-rotameric sidechain are listed below:

Mol	Chain	Res	Type
1	A	23	ARG
1	A	90	LYS
1	B	2	ASP
1	B	161	GLU
1	B	170	ARG
1	C	62	ARG
1	D	2	ASP
1	D	13	ARG
1	D	62	ARG
1	D	113	ASN
1	D	158	ARG

Sometimes sidechains can be flipped to improve hydrogen bonding and reduce clashes. All (7) such sidechains are listed below:

Mol	Chain	Res	Type
1	A	88	ASN
1	A	113	ASN
1	A	126	ASN
1	C	54	GLN

Continued on next page...

Continued from previous page...

Mol	Chain	Res	Type
1	D	52	GLN
1	D	113	ASN
1	D	150	GLN

5.3.3 RNA [i](#)

There are no RNA molecules in this entry.

5.4 Non-standard residues in protein, DNA, RNA chains [i](#)

There are no non-standard protein/DNA/RNA residues in this entry.

5.5 Carbohydrates [i](#)

There are no oligosaccharides in this entry.

5.6 Ligand geometry [i](#)

2 ligands are modelled in this entry.

In the following table, the Counts columns list the number of bonds (or angles) for which Mogul statistics could be retrieved, the number of bonds (or angles) that are observed in the model and the number of bonds (or angles) that are defined in the Chemical Component Dictionary. The Link column lists molecule types, if any, to which the group is linked. The Z score for a bond length (or angle) is the number of standard deviations the observed value is removed from the expected value. A bond length (or angle) with $|Z| > 2$ is considered an outlier worth inspection. RMSZ is the root-mean-square of all Z scores of the bond lengths (or angles).

Mol	Type	Chain	Res	Link	Bond lengths			Bond angles		
					Counts	RMSZ	$\# Z > 2$	Counts	RMSZ	$\# Z > 2$
2	LP5	C	501	-	47,48,48	0.93	3 (6%)	58,60,60	2.09	10 (17%)
3	TLA	C	6748	-	9,9,9	1.17	0	12,12,12	0.99	0

In the following table, the Chirals column lists the number of chiral outliers, the number of chiral centers analysed, the number of these observed in the model and the number defined in the Chemical Component Dictionary. Similar counts are reported in the Torsion and Rings columns. '-' means no outliers of that kind were identified.

Mol	Type	Chain	Res	Link	Chirals	Torsions	Rings
2	LP5	C	501	-	-	18/44/65/65	0/1/1/1

Continued on next page...

Continued from previous page...

Mol	Type	Chain	Res	Link	Chirals	Torsions	Rings
3	TLA	C	6748	-	-	0/12/12/12	-

All (3) bond length outliers are listed below:

Mol	Chain	Res	Type	Atoms	Z	Observed(Å)	Ideal(Å)
2	C	501	LP5	O3-C28	4.44	1.46	1.34
2	C	501	LP5	P45-O1	2.26	1.63	1.59
2	C	501	LP5	C1-C2	2.08	1.56	1.53

All (10) bond angle outliers are listed below:

Mol	Chain	Res	Type	Atoms	Z	Observed(°)	Ideal(°)
2	C	501	LP5	O1-C1-C2	7.30	121.61	108.40
2	C	501	LP5	O6-C6-C5	5.88	131.36	111.33
2	C	501	LP5	C1-C2-N2	5.66	120.41	110.92
2	C	501	LP5	C2-N2-C7	5.38	130.82	122.90
2	C	501	LP5	O3-C28-C29	5.10	120.58	111.43
2	C	501	LP5	C3-C2-N2	-4.90	103.09	110.91
2	C	501	LP5	C3-C4-C5	3.19	116.38	109.57
2	C	501	LP5	O5-C5-C6	2.91	113.66	106.44
2	C	501	LP5	P45-O1-C1	-2.24	117.53	123.54
2	C	501	LP5	O3-C28-O42	-2.05	118.92	123.70

There are no chirality outliers.

All (18) torsion outliers are listed below:

Mol	Chain	Res	Type	Atoms
2	C	501	LP5	O44-C16-C8-C7
2	C	501	LP5	C4-C3-O3-C28
2	C	501	LP5	C29-C28-O3-C3
2	C	501	LP5	O42-C28-O3-C3
2	C	501	LP5	C31-C32-C33-C34
2	C	501	LP5	C17-C18-C19-C20
2	C	501	LP5	C23-C24-C25-C26
2	C	501	LP5	C37-C38-C39-C40
2	C	501	LP5	C33-C34-C35-C36
2	C	501	LP5	C36-C37-C38-C39
2	C	501	LP5	C20-C21-C22-C23
2	C	501	LP5	C19-C20-C21-C22
2	C	501	LP5	C3-C2-N2-C7
2	C	501	LP5	C34-C35-C36-C37

Continued on next page...

Continued from previous page...

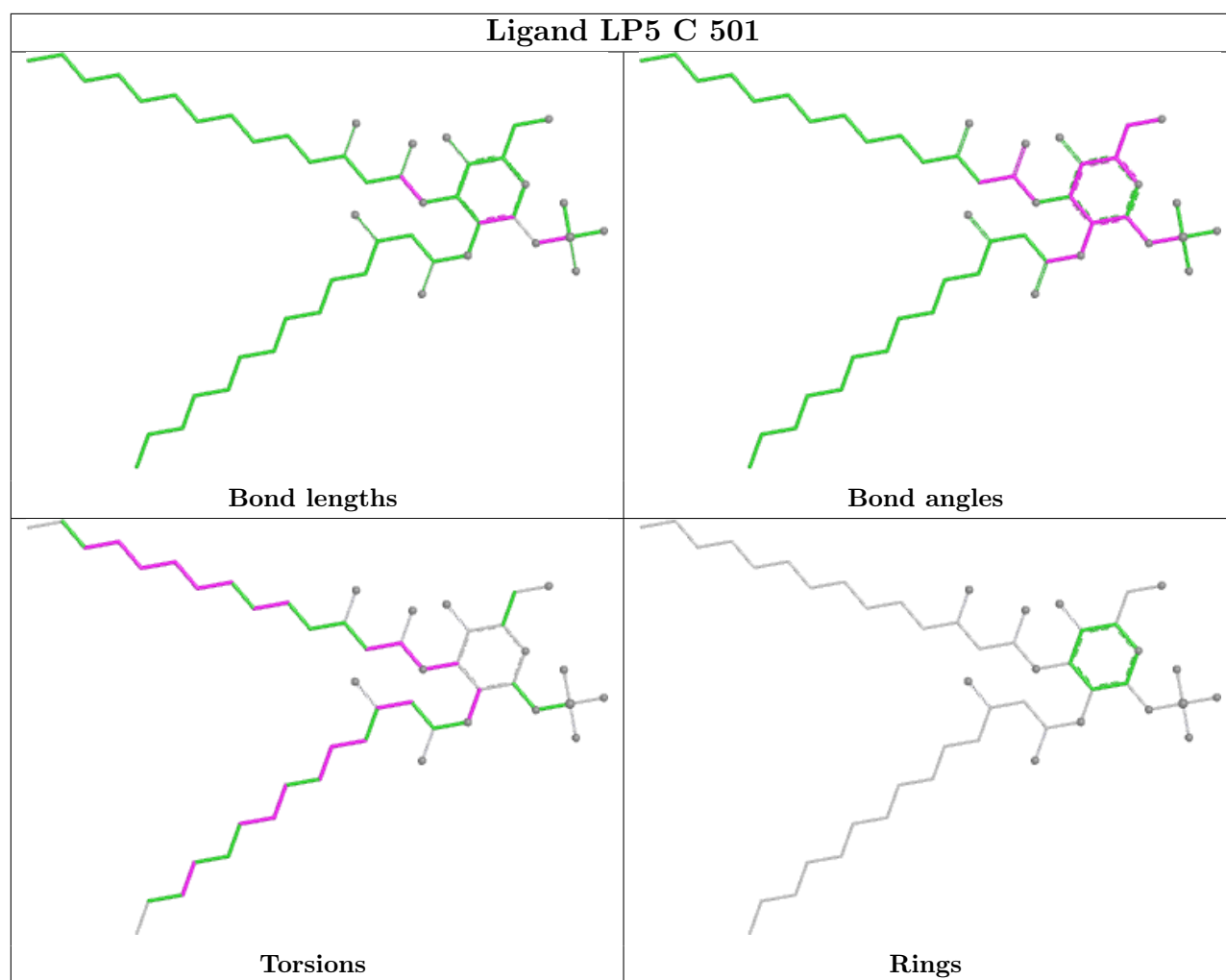
Mol	Chain	Res	Type	Atoms
2	C	501	LP5	C16-C17-C18-C19
2	C	501	LP5	C35-C36-C37-C38
2	C	501	LP5	O42-C28-C29-C30
2	C	501	LP5	O3-C28-C29-C30

There are no ring outliers.

1 monomer is involved in 13 short contacts:

Mol	Chain	Res	Type	Clashes	Symm-Clashes
2	C	501	LP5	13	0

The following is a two-dimensional graphical depiction of Mogul quality analysis of bond lengths, bond angles, torsion angles, and ring geometry for all instances of the Ligand of Interest. In addition, ligands with molecular weight > 250 and outliers as shown on the validation Tables will also be included. For torsion angles, if less than 5% of the Mogul distribution of torsion angles is within 10 degrees of the torsion angle in question, then that torsion angle is considered an outlier. Any bond that is central to one or more torsion angles identified as an outlier by Mogul will be highlighted in the graph. For rings, the root-mean-square deviation (RMSD) between the ring in question and similar rings identified by Mogul is calculated over all ring torsion angles. If the average RMSD is greater than 60 degrees and the minimal RMSD between the ring in question and any Mogul-identified rings is also greater than 60 degrees, then that ring is considered an outlier. The outliers are highlighted in purple. The color gray indicates Mogul did not find sufficient equivalents in the CSD to analyse the geometry.



5.7 Other polymers [i](#)

There are no such residues in this entry.

5.8 Polymer linkage issues [i](#)

There are no chain breaks in this entry.

6 Fit of model and data ⓘ

6.1 Protein, DNA and RNA chains ⓘ

In the following table, the column labelled ‘#RSRZ > 2’ contains the number (and percentage) of RSRZ outliers, followed by percent RSRZ outliers for the chain as percentile scores relative to all X-ray entries and entries of similar resolution. The OWAB column contains the minimum, median, 95th percentile and maximum values of the occupancy-weighted average B-factor per residue. The column labelled ‘Q < 0.9’ lists the number of (and percentage) of residues with an average occupancy less than 0.9.

Mol	Chain	Analysed	<RSRZ>	#RSRZ>2	OWAB(Å ²)	Q<0.9
1	A	171/171 (100%)	0.03	7 (4%) 42 45	14, 22, 40, 86	0
1	B	171/171 (100%)	-0.02	4 (2%) 61 64	13, 20, 37, 76	0
1	C	171/171 (100%)	0.22	10 (5%) 30 31	11, 21, 41, 96	0
1	D	171/171 (100%)	0.58	15 (8%) 17 17	15, 25, 45, 87	0
All	All	684/684 (100%)	0.20	36 (5%) 33 35	11, 22, 41, 96	0

All (36) RSRZ outliers are listed below:

Mol	Chain	Res	Type	RSRZ
1	D	4	PRO	5.7
1	A	2	ASP	5.5
1	D	5	ALA	5.4
1	D	2	ASP	5.4
1	A	3	PRO	5.3
1	C	5	ALA	5.1
1	C	6	CYS	5.0
1	D	3	PRO	4.9
1	C	4	PRO	4.7
1	C	3	PRO	4.4
1	D	171	ALA	4.3
1	D	6	CYS	4.1
1	A	4	PRO	4.0
1	D	1	GLU	3.7
1	C	1	GLU	3.7
1	D	7	GLY	3.6
1	B	3	PRO	3.4
1	B	5	ALA	3.4
1	C	7	GLY	3.3
1	A	5	ALA	3.2
1	C	2	ASP	3.1

Continued on next page...

Continued from previous page...

Mol	Chain	Res	Type	RSRZ
1	B	4	PRO	2.9
1	D	113	ASN	2.8
1	D	49	CYS	2.6
1	A	7	GLY	2.6
1	D	8	SER	2.6
1	C	113	ASN	2.5
1	A	6	CYS	2.4
1	C	8	SER	2.4
1	C	171	ALA	2.4
1	A	171	ALA	2.2
1	D	47	ALA	2.2
1	B	2	ASP	2.1
1	D	43	CYS	2.1
1	D	50	ALA	2.0
1	D	115	VAL	2.0

6.2 Non-standard residues in protein, DNA, RNA chains [i](#)

There are no non-standard protein/DNA/RNA residues in this entry.

6.3 Carbohydrates [i](#)

There are no monosaccharides in this entry.

6.4 Ligands [i](#)

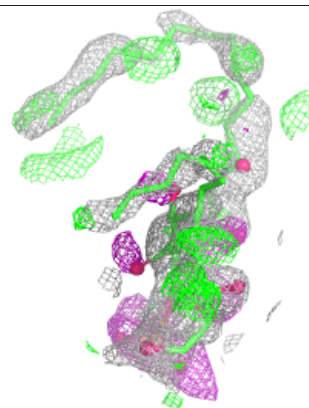
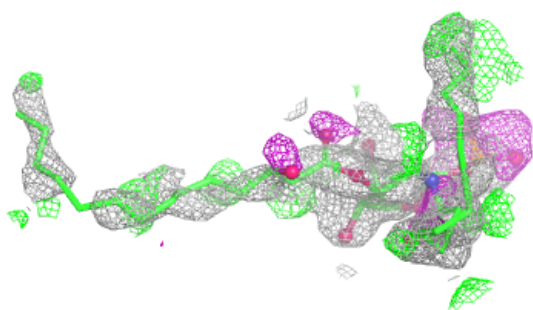
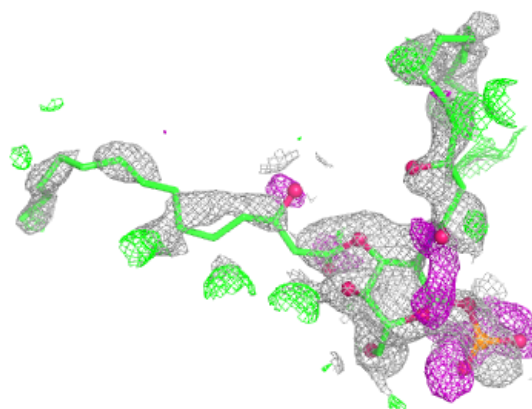
In the following table, the Atoms column lists the number of modelled atoms in the group and the number defined in the chemical component dictionary. The B-factors column lists the minimum, median, 95th percentile and maximum values of B factors of atoms in the group. The column labelled 'Q < 0.9' lists the number of atoms with occupancy less than 0.9.

Mol	Type	Chain	Res	Atoms	RSCC	RSR	B-factors(\AA^2)	Q<0.9
2	LP5	C	501	48/48	0.56	0.25	43,60,65,66	0
3	TLA	C	6748	10/10	0.87	0.13	25,31,39,41	0

The following is a graphical depiction of the model fit to experimental electron density of all instances of the Ligand of Interest. In addition, ligands with molecular weight > 250 and outliers as shown on the geometry validation Tables will also be included. Each fit is shown from different orientation to approximate a three-dimensional view.

Electron density around LP5 C 501:

$2mF_o-DF_c$ (at 0.7 rmsd) in gray
 mF_o-DF_c (at 3 rmsd) in purple (negative)
and green (positive)



6.5 Other polymers [i](#)

There are no such residues in this entry.