



# Full wwPDB X-ray Structure Validation Report ⓘ

Jun 25, 2024 – 11:35 PM EDT

PDB ID : 6RSC  
Title : Structure based optimization of JAK1-ATP binding pocket Inhibitors in the aminopyrazole class  
Authors : Brown, D.G.; Lupardus, P.J.  
Deposited on : 2019-05-21  
Resolution : 1.85 Å(reported)

This is a Full wwPDB X-ray Structure Validation Report for a publicly released PDB entry.

We welcome your comments at [validation@mail.wwpdb.org](mailto:validation@mail.wwpdb.org)

A user guide is available at

<https://www.wwpdb.org/validation/2017/XrayValidationReportHelp>

with specific help available everywhere you see the ⓘ symbol.

The types of validation reports are described at

<http://www.wwpdb.org/validation/2017/FAQs#types>.

---

The following versions of software and data (see [references ⓘ](#)) were used in the production of this report:

MolProbity	:	4.02b-467
Mogul	:	1.8.5 (274361), CSD as541be (2020)
Xtriage (Phenix)	:	1.13
EDS	:	2.37.1
buster-report	:	1.1.7 (2018)
Percentile statistics	:	20191225.v01 (using entries in the PDB archive December 25th 2019)
Refmac	:	5.8.0158
CCP4	:	7.0.044 (Gargrove)
Ideal geometry (proteins)	:	Engh & Huber (2001)
Ideal geometry (DNA, RNA)	:	Parkinson et al. (1996)
Validation Pipeline (wwPDB-VP)	:	2.37.1

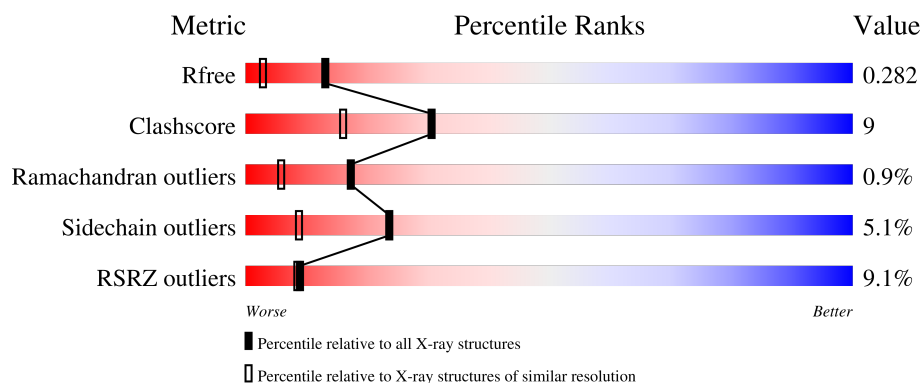
# 1 Overall quality at a glance

The following experimental techniques were used to determine the structure:

*X-RAY DIFFRACTION*

The reported resolution of this entry is 1.85 Å.

Percentile scores (ranging between 0-100) for global validation metrics of the entry are shown in the following graphic. The table shows the number of entries on which the scores are based.



Metric	Whole archive (#Entries)	Similar resolution (#Entries, resolution range(Å))
$R_{free}$	130704	2469 (1.86-1.86)
Clashscore	141614	2625 (1.86-1.86)
Ramachandran outliers	138981	2592 (1.86-1.86)
Sidechain outliers	138945	2592 (1.86-1.86)
RSRZ outliers	127900	2436 (1.86-1.86)

The table below summarises the geometric issues observed across the polymeric chains and their fit to the electron density. The red, orange, yellow and green segments of the lower bar indicate the fraction of residues that contain outliers for  $\geq 3$ , 2, 1 and 0 types of geometric quality criteria respectively. A grey segment represents the fraction of residues that are not modelled. The numeric value for each fraction is indicated below the corresponding segment, with a dot representing fractions  $\leq 5\%$ . The upper red bar (where present) indicates the fraction of residues that have poor fit to the electron density. The numeric value is given above the bar.

Mol	Chain	Length	Quality of chain
1	A	302	
1	B	302	

## 2 Entry composition [i](#)

There are 3 unique types of molecules in this entry. The entry contains 5030 atoms, of which 0 are hydrogens and 0 are deuteriums.

In the tables below, the ZeroOcc column contains the number of atoms modelled with zero occupancy, the AltConf column contains the number of residues with at least one atom in alternate conformation and the Trace column contains the number of residues modelled with at most 2 atoms.

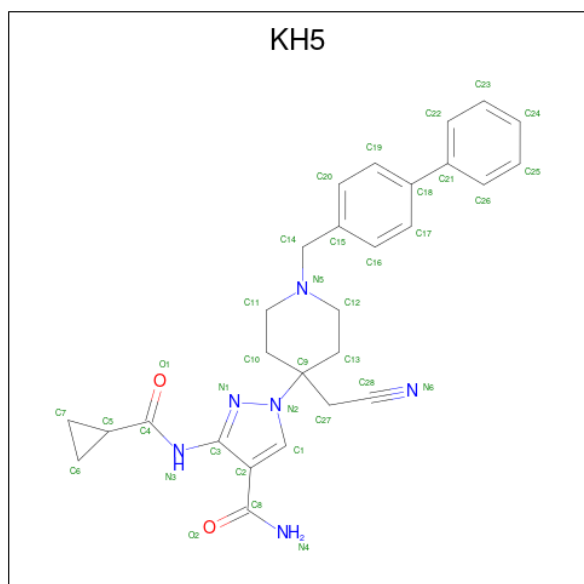
- Molecule 1 is a protein called Tyrosine-protein kinase JAK1.

Mol	Chain	Residues	Atoms						ZeroOcc	AltConf	Trace
1	A	286	Total	C	N	O	P	S	0	3	0
			2340	1488	397	438	2	15			
1	B	281	Total	C	N	O	P	S	0	0	0
			2291	1461	388	425	2	15			

There are 2 discrepancies between the modelled and reference sequences:

Chain	Residue	Modelled	Actual	Comment	Reference
A	853	GLY	-	expression tag	UNP P23458
B	853	GLY	-	expression tag	UNP P23458

- Molecule 2 is 1-[4-(cyanomethyl)-1-[(4-phenylphenyl)methyl]piperidin-4-yl]-3-(cyclopropylcarbonylamino)pyrazole-4-carboxamide (three-letter code: KH5) (formula: C<sub>28</sub>H<sub>30</sub>N<sub>6</sub>O<sub>2</sub>) (labeled as "Ligand of Interest" by depositor).



Mol	Chain	Residues	Atoms				ZeroOcc	AltConf
2	A	1	Total	C	N	O	0	0
			36	28	6	2		
2	B	1	Total	C	N	O	0	0
			36	28	6	2		

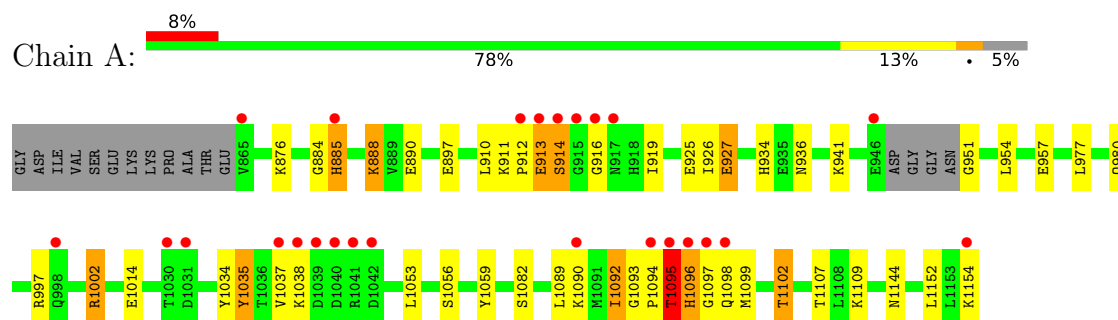
- Molecule 3 is water.

Mol	Chain	Residues	Atoms		ZeroOcc	AltConf
3	A	155	Total	O	0	0
			155	155		
3	B	172	Total	O	0	0
			172	172		

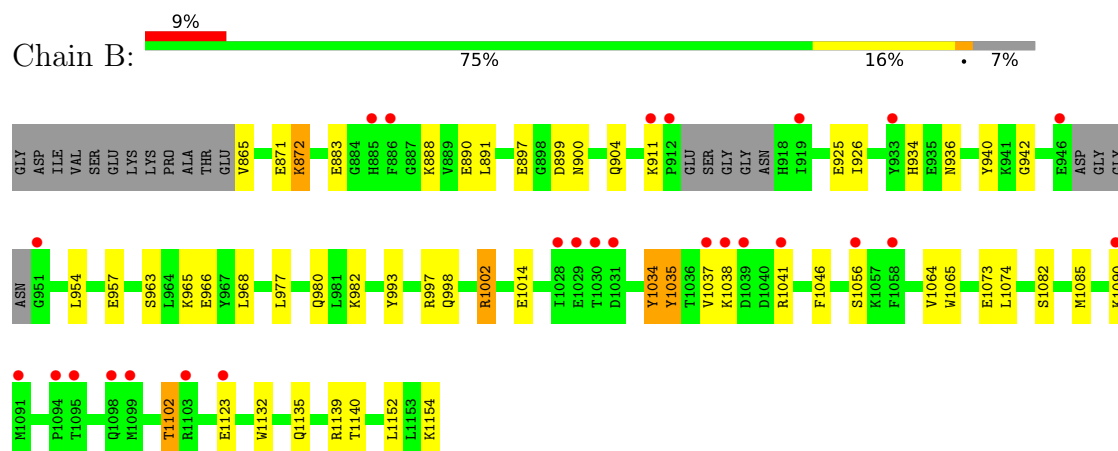
### 3 Residue-property plots [i](#)

These plots are drawn for all protein, RNA, DNA and oligosaccharide chains in the entry. The first graphic for a chain summarises the proportions of the various outlier classes displayed in the second graphic. The second graphic shows the sequence view annotated by issues in geometry and electron density. Residues are color-coded according to the number of geometric quality criteria for which they contain at least one outlier: green = 0, yellow = 1, orange = 2 and red = 3 or more. A red dot above a residue indicates a poor fit to the electron density ( $RSRZ > 2$ ). Stretches of 2 or more consecutive residues without any outlier are shown as a green connector. Residues present in the sample, but not in the model, are shown in grey.

#### • Molecule 1: Tyrosine-protein kinase JAK1



#### • Molecule 1: Tyrosine-protein kinase JAK1



## 4 Data and refinement statistics

Property	Value	Source
Space group	P 21 21 21	Depositor
Cell constants a, b, c, $\alpha$ , $\beta$ , $\gamma$	88.67Å 173.85Å 42.88Å 90.00° 90.00° 90.00°	Depositor
Resolution (Å)	62.07 – 1.85 62.07 – 1.85	Depositor EDS
% Data completeness (in resolution range)	98.2 (62.07-1.85) 98.3 (62.07-1.85)	Depositor EDS
$R_{merge}$	(Not available)	Depositor
$R_{sym}$	(Not available)	Depositor
$\langle I/\sigma(I) \rangle$ <sup>1</sup>	2.30 (at 1.86Å)	Xtriage
Refinement program	REFMAC 5.8.0238	Depositor
R, $R_{free}$	0.248 , 0.280 0.254 , 0.282	Depositor DCC
$R_{free}$ test set	2906 reflections (5.13%)	wwPDB-VP
Wilson B-factor (Å <sup>2</sup> )	19.3	Xtriage
Anisotropy	0.278	Xtriage
Bulk solvent $k_{sol}$ (e/Å <sup>3</sup> ), $B_{sol}$ (Å <sup>2</sup> )	0.39 , 45.2	EDS
L-test for twinning <sup>2</sup>	$\langle  L  \rangle = 0.55$ , $\langle L^2 \rangle = 0.40$	Xtriage
Estimated twinning fraction	No twinning to report.	Xtriage
$F_o, F_c$ correlation	0.93	EDS
Total number of atoms	5030	wwPDB-VP
Average B, all atoms (Å <sup>2</sup> )	18.0	wwPDB-VP

Xtriage's analysis on translational NCS is as follows: *The analyses of the Patterson function reveals a significant off-origin peak that is 60.64 % of the origin peak, indicating pseudo-translational symmetry. The chance of finding a peak of this or larger height randomly in a structure without pseudo-translational symmetry is equal to 1.4756e-05. The detected translational NCS is most likely also responsible for the elevated intensity ratio.*

<sup>1</sup>Intensities estimated from amplitudes.

<sup>2</sup>Theoretical values of  $\langle |L| \rangle$ ,  $\langle L^2 \rangle$  for acentric reflections are 0.5, 0.333 respectively for untwinned datasets, and 0.375, 0.2 for perfectly twinned datasets.

## 5 Model quality

### 5.1 Standard geometry

Bond lengths and bond angles in the following residue types are not validated in this section: PTR, KH5

The Z score for a bond length (or angle) is the number of standard deviations the observed value is removed from the expected value. A bond length (or angle) with  $|Z| > 5$  is considered an outlier worth inspection. RMSZ is the root-mean-square of all Z scores of the bond lengths (or angles).

Mol	Chain	Bond lengths		Bond angles	
		RMSZ	# Z  >5	RMSZ	# Z  >5
1	A	1.01	4/2357 (0.2%)	1.06	4/3174 (0.1%)
1	B	1.00	6/2306 (0.3%)	1.04	3/3103 (0.1%)
All	All	1.00	10/4663 (0.2%)	1.05	7/6277 (0.1%)

Chiral center outliers are detected by calculating the chiral volume of a chiral center and verifying if the center is modelled as a planar moiety or with the opposite hand. A planarity outlier is detected by checking planarity of atoms in a peptide group, atoms in a mainchain group or atoms of a sidechain that are expected to be planar.

Mol	Chain	#Chirality outliers	#Planarity outliers
1	A	0	1
1	B	0	1
All	All	0	2

All (10) bond length outliers are listed below:

Mol	Chain	Res	Type	Atoms	Z	Observed(Å)	Ideal(Å)
1	B	1014	GLU	CD-OE2	-8.75	1.16	1.25
1	A	927	GLU	CD-OE2	-7.89	1.17	1.25
1	A	897	GLU	CD-OE2	-6.86	1.18	1.25
1	B	1073	GLU	CD-OE2	5.87	1.32	1.25
1	B	925	GLU	CD-OE1	5.67	1.31	1.25
1	A	925	GLU	CD-OE1	5.39	1.31	1.25
1	B	957	GLU	CD-OE1	5.33	1.31	1.25
1	A	1014	GLU	CD-OE2	-5.30	1.19	1.25
1	B	897	GLU	CD-OE2	-5.25	1.19	1.25
1	B	1123	GLU	CD-OE1	5.21	1.31	1.25

All (7) bond angle outliers are listed below:

Mol	Chain	Res	Type	Atoms	Z	Observed(°)	Ideal(°)
1	A	885	HIS	CB-CA-C	6.92	124.25	110.40
1	B	1139	ARG	CG-CD-NE	-6.64	97.86	111.80
1	B	1002	ARG	NE-CZ-NH1	6.51	123.55	120.30
1	B	1002	ARG	NE-CZ-NH2	-5.71	117.44	120.30
1	A	1154	LYS	CA-C-O	-5.66	108.21	120.10
1	A	1096	HIS	CB-CA-C	-5.21	99.99	110.40
1	A	1002	ARG	NE-CZ-NH1	5.02	122.81	120.30

There are no chirality outliers.

All (2) planarity outliers are listed below:

Mol	Chain	Res	Type	Group
1	A	1092	ILE	Peptide
1	B	883	GLU	Peptide

## 5.2 Too-close contacts ⓘ

In the following table, the Non-H and H(model) columns list the number of non-hydrogen atoms and hydrogen atoms in the chain respectively. The H(added) column lists the number of hydrogen atoms added and optimized by MolProbity. The Clashes column lists the number of clashes within the asymmetric unit, whereas Symm-Clashes lists symmetry-related clashes.

Mol	Chain	Non-H	H(model)	H(added)	Clashes	Symm-Clashes
1	A	2340	0	2325	60	0
1	B	2291	0	2285	37	0
2	A	36	0	0	0	0
2	B	36	0	0	0	0
3	A	155	0	0	10	0
3	B	172	0	0	7	0
All	All	5030	0	4610	86	0

The all-atom clashscore is defined as the number of clashes found per 1000 atoms (including hydrogen atoms). The all-atom clashscore for this structure is 9.

All (86) close contacts within the same asymmetric unit are listed below, sorted by their clash magnitude.

Atom-1	Atom-2	Interatomic distance (Å)	Clash overlap (Å)
1:A:1093[B]:GLY:H	1:A:1094[B]:PRO:CD	1.66	1.08
1:A:1096:HIS:HB2	1:B:1041:ARG:HA	1.38	1.01
1:A:1094[B]:PRO:O	1:A:1095[B]:THR:OG1	1.79	1.01

*Continued on next page...*



*Continued from previous page...*

Atom-1	Atom-2	Interatomic distance (Å)	Clash overlap (Å)
1:A:1093[B]:GLY:H	1:A:1094[B]:PRO:HD3	1.29	0.92
1:B:871:GLU:HG3	3:B:1424:HOH:O	1.72	0.90
1:A:927:GLU:OE2	3:A:1301:HOH:O	1.96	0.82
1:A:1093[B]:GLY:N	1:A:1094[B]:PRO:CD	2.42	0.82
1:B:977:LEU:HA	1:B:980:GLN:HE21	1.42	0.81
1:A:977:LEU:HA	1:A:980:GLN:HE21	1.45	0.80
1:B:934:HIS:HD2	1:B:936:ASN:H	1.27	0.79
1:A:1096:HIS:HB2	1:B:1041:ARG:CA	2.12	0.79
1:A:1094[B]:PRO:C	1:A:1095[B]:THR:OG1	2.19	0.78
1:A:1096:HIS:ND1	1:A:1098:GLN:HB3	2.00	0.76
1:A:1094[A]:PRO:HB2	3:A:1305:HOH:O	1.85	0.76
1:A:1096:HIS:CB	1:B:1041:ARG:HA	2.16	0.75
1:A:1094[A]:PRO:C	3:A:1305:HOH:O	2.26	0.73
1:A:1035:PTR:HE1	1:A:1037:VAL:HG22	1.69	0.73
1:B:934:HIS:CD2	1:B:936:ASN:H	2.07	0.72
1:A:1053:LEU:O	1:B:1102:THR:HG21	1.90	0.72
1:A:951:GLY:HA2	3:A:1414:HOH:O	1.88	0.72
1:A:1089:LEU:O	1:A:1093[A]:GLY:CA	2.39	0.71
1:A:1096:HIS:HB2	1:B:1041:ARG:CB	2.21	0.69
1:A:1089:LEU:O	1:A:1093[A]:GLY:HA2	1.94	0.68
1:A:957:GLU:OE1	3:A:1302:HOH:O	2.11	0.68
1:A:1094[A]:PRO:CA	3:A:1305:HOH:O	2.42	0.68
1:B:1002:ARG:NH2	1:B:1037:VAL:HG21	2.09	0.68
1:B:963:SER:OG	1:B:966:GLU:OE1	2.08	0.67
1:A:934:HIS:HD2	1:A:936:ASN:H	1.40	0.66
1:B:1035:PTR:HE1	1:B:1037:VAL:HG22	1.76	0.65
1:A:1094[A]:PRO:CB	3:A:1305:HOH:O	2.44	0.64
1:B:993:TYR:OH	1:B:997:ARG:NH2	2.32	0.63
1:A:934:HIS:CD2	1:A:936:ASN:H	2.18	0.61
1:B:890:GLU:OE1	3:B:1301:HOH:O	2.16	0.61
1:A:1096:HIS:ND1	1:A:1098:GLN:CB	2.66	0.58
1:A:1096:HIS:CD2	1:B:1041:ARG:HB2	2.39	0.58
1:A:1096:HIS:CG	1:B:1041:ARG:HB2	2.39	0.58
1:B:1102:THR:HG22	3:B:1316:HOH:O	2.04	0.57
1:A:1092:ILE:HG22	1:A:1107:THR:OG1	2.04	0.57
1:A:1089:LEU:O	1:A:1093[B]:GLY:CA	2.54	0.56
1:A:1095[A]:THR:HG23	1:A:1096:HIS:N	2.20	0.56
1:A:1095[A]:THR:N	3:A:1303:HOH:O	2.13	0.56
1:A:1096:HIS:C	1:A:1098:GLN:H	2.10	0.55
1:B:1046:PHE:CE2	1:B:1085:MET:HG3	2.42	0.54
1:A:1002:ARG:CZ	1:A:1037:VAL:HG21	2.37	0.54

*Continued on next page...*

*Continued from previous page...*

Atom-1	Atom-2	Interatomic distance (Å)	Clash overlap (Å)
1:B:1065:TRP:CE3	1:B:1132:TRP:HA	2.43	0.53
1:A:1095[A]:THR:CG2	1:A:1096:HIS:N	2.72	0.52
1:A:1096:HIS:ND1	1:B:1041:ARG:O	2.43	0.52
1:A:1035:PTR:CE1	1:A:1037:VAL:HG22	2.36	0.52
1:B:997:ARG:HG2	1:B:997:ARG:HH11	1.75	0.51
1:B:1002:ARG:HH21	1:B:1037:VAL:HG21	1.75	0.51
1:B:934:HIS:HE1	3:B:1467:HOH:O	1.93	0.50
1:A:1089:LEU:O	1:A:1093[B]:GLY:HA3	2.12	0.49
1:B:926:ILE:HG12	1:B:954:LEU:HB2	1.94	0.48
1:A:1096:HIS:CB	1:B:1041:ARG:HB2	2.45	0.47
1:B:891:LEU:HD11	1:B:904:GLN:HB3	1.97	0.47
1:B:940:TYR:CZ	1:B:942:GLY:HA2	2.49	0.46
1:A:1002:ARG:NH2	1:A:1037:VAL:HG21	2.30	0.46
1:A:888:LYS:HG3	1:A:890:GLU:HG3	1.98	0.46
1:A:1096:HIS:CE1	1:B:1041:ARG:O	2.70	0.45
1:B:1034:PTR:O3P	1:B:1034:PTR:HE1	2.16	0.45
1:A:912:PRO:O	1:A:914:SER:N	2.44	0.45
1:A:941:LYS:HD2	1:A:957:GLU:HA	1.98	0.45
1:A:1093[B]:GLY:N	1:A:1094[B]:PRO:HD3	2.12	0.43
1:A:1096:HIS:HB3	1:A:1099:MET:H	1.82	0.43
1:A:884:GLY:O	1:A:911:LYS:NZ	2.51	0.43
1:A:910:LEU:CD1	1:A:919:ILE:HG13	2.48	0.43
1:B:982:LYS:CE	3:B:1330:HOH:O	2.66	0.43
1:A:1093[B]:GLY:H	1:A:1094[B]:PRO:HD2	1.71	0.42
1:B:968:LEU:HD11	1:B:1074:LEU:HD12	2.00	0.42
1:A:1096:HIS:HB2	1:B:1041:ARG:HB2	2.01	0.42
1:A:926:ILE:HG12	1:A:954:LEU:HB2	2.01	0.42
1:A:1096:HIS:O	1:A:1098:GLN:N	2.53	0.42
1:A:1102:THR:HG22	3:A:1309:HOH:O	2.19	0.42
1:A:1096:HIS:C	1:A:1098:GLN:N	2.73	0.41
1:B:899:ASP:O	1:B:900:ASN:HB2	2.20	0.41
1:B:998:GLN:NE2	3:B:1317:HOH:O	2.50	0.41
1:A:876:LYS:HA	1:A:876:LYS:CE	2.51	0.41
1:A:1034:PTR:HD1	1:A:1059:TYR:CE2	2.56	0.41
1:A:927:GLU:CG	3:A:1301:HOH:O	2.68	0.41
1:A:1089:LEU:O	1:A:1093[B]:GLY:HA2	2.18	0.41
1:B:980:GLN:O	1:B:1074:LEU:HD21	2.21	0.41
1:B:872:LYS:HE3	3:B:1427:HOH:O	2.20	0.40
1:B:1064:VAL:HG11	1:B:1140:THR:O	2.21	0.40

There are no symmetry-related clashes.

## 5.3 Torsion angles

### 5.3.1 Protein backbone

In the following table, the Percentiles column shows the percent Ramachandran outliers of the chain as a percentile score with respect to all X-ray entries followed by that with respect to entries of similar resolution.

The Analysed column shows the number of residues for which the backbone conformation was analysed, and the total number of residues.

Mol	Chain	Analysed	Favoured	Allowed	Outliers	Percentiles	
1	A	283/302 (94%)	263 (93%)	14 (5%)	6 (2%)	7	1
1	B	273/302 (90%)	270 (99%)	3 (1%)	0	100	100
All	All	556/604 (92%)	533 (96%)	17 (3%)	6 (1%)	17	4

All (6) Ramachandran outliers are listed below:

Mol	Chain	Res	Type
1	A	913	GLU
1	A	914	SER
1	A	916	GLY
1	A	1095[A]	THR
1	A	1095[B]	THR
1	A	1097	GLY

### 5.3.2 Protein sidechains

In the following table, the Percentiles column shows the percent sidechain outliers of the chain as a percentile score with respect to all X-ray entries followed by that with respect to entries of similar resolution.

The Analysed column shows the number of residues for which the sidechain conformation was analysed, and the total number of residues.

Mol	Chain	Analysed	Rotameric	Outliers	Percentiles	
1	A	257/267 (96%)	243 (95%)	14 (5%)	22	8
1	B	252/267 (94%)	239 (95%)	13 (5%)	23	8
All	All	509/534 (95%)	482 (95%)	27 (5%)	24	8

All (27) residues with a non-rotameric sidechain are listed below:

Mol	Chain	Res	Type
1	A	885	HIS
1	A	888	LYS
1	A	913	GLU
1	A	997	ARG
1	A	1038	LYS
1	A	1056	SER
1	A	1082	SER
1	A	1090	LYS
1	A	1095[A]	THR
1	A	1095[B]	THR
1	A	1102	THR
1	A	1109	LYS
1	A	1144	ASN
1	A	1152	LEU
1	B	865	VAL
1	B	872	LYS
1	B	888	LYS
1	B	911	LYS
1	B	965	LYS
1	B	1038	LYS
1	B	1056	SER
1	B	1082	SER
1	B	1090	LYS
1	B	1102	THR
1	B	1135	GLN
1	B	1152	LEU
1	B	1154	LYS

Sometimes sidechains can be flipped to improve hydrogen bonding and reduce clashes. All (13) such sidechains are listed below:

Mol	Chain	Res	Type
1	A	869	HIS
1	A	917	ASN
1	A	934	HIS
1	A	936	ASN
1	A	979	GLN
1	A	980	GLN
1	B	934	HIS
1	B	936	ASN
1	B	979	GLN
1	B	980	GLN
1	B	998	GLN
1	B	1135	GLN

*Continued on next page...*

*Continued from previous page...*

Mol	Chain	Res	Type
1	B	1138	ASN

### 5.3.3 RNA ⓘ

There are no RNA molecules in this entry.

## 5.4 Non-standard residues in protein, DNA, RNA chains ⓘ

4 non-standard protein/DNA/RNA residues are modelled in this entry.

In the following table, the Counts columns list the number of bonds (or angles) for which Mogul statistics could be retrieved, the number of bonds (or angles) that are observed in the model and the number of bonds (or angles) that are defined in the Chemical Component Dictionary. The Link column lists molecule types, if any, to which the group is linked. The Z score for a bond length (or angle) is the number of standard deviations the observed value is removed from the expected value. A bond length (or angle) with  $|Z| > 2$  is considered an outlier worth inspection. RMSZ is the root-mean-square of all Z scores of the bond lengths (or angles).

Mol	Type	Chain	Res	Link	Bond lengths			Bond angles		
					Counts	RMSZ	$\# Z  > 2$	Counts	RMSZ	$\# Z  > 2$
1	PTR	B	1035	1	15,16,17	0.73	0	19,22,24	0.94	2 (10%)
1	PTR	B	1034	1	15,16,17	0.92	1 (6%)	19,22,24	0.78	0
1	PTR	A	1034	1	15,16,17	0.81	0	19,22,24	0.95	0
1	PTR	A	1035	1	15,16,17	0.59	0	19,22,24	0.92	1 (5%)

In the following table, the Chirals column lists the number of chiral outliers, the number of chiral centers analysed, the number of these observed in the model and the number defined in the Chemical Component Dictionary. Similar counts are reported in the Torsion and Rings columns. '-' means no outliers of that kind were identified.

Mol	Type	Chain	Res	Link	Chirals	Torsions	Rings
1	PTR	B	1035	1	-	0/10/11/13	0/1/1/1
1	PTR	B	1034	1	-	0/10/11/13	0/1/1/1
1	PTR	A	1034	1	-	0/10/11/13	0/1/1/1
1	PTR	A	1035	1	-	0/10/11/13	0/1/1/1

All (1) bond length outliers are listed below:

Mol	Chain	Res	Type	Atoms	Z	Observed(Å)	Ideal(Å)
1	B	1034	PTR	P-OH	-2.74	1.54	1.59

All (3) bond angle outliers are listed below:

Mol	Chain	Res	Type	Atoms	Z	Observed(°)	Ideal(°)
1	B	1035	PTR	O2P-P-OH	-2.33	97.95	105.24
1	A	1035	PTR	O2P-P-OH	2.06	111.67	105.24
1	B	1035	PTR	O3P-P-OH	2.01	111.51	105.24

There are no chirality outliers.

There are no torsion outliers.

There are no ring outliers.

4 monomers are involved in 5 short contacts:

Mol	Chain	Res	Type	Clashes	Symm-Clashes
1	B	1035	PTR	1	0
1	B	1034	PTR	1	0
1	A	1034	PTR	1	0
1	A	1035	PTR	2	0

## 5.5 Carbohydrates [i](#)

There are no monosaccharides in this entry.

## 5.6 Ligand geometry [i](#)

2 ligands are modelled in this entry.

In the following table, the Counts columns list the number of bonds (or angles) for which Mogul statistics could be retrieved, the number of bonds (or angles) that are observed in the model and the number of bonds (or angles) that are defined in the Chemical Component Dictionary. The Link column lists molecule types, if any, to which the group is linked. The Z score for a bond length (or angle) is the number of standard deviations the observed value is removed from the expected value. A bond length (or angle) with  $|Z| > 2$  is considered an outlier worth inspection. RMSZ is the root-mean-square of all Z scores of the bond lengths (or angles).

Mol	Type	Chain	Res	Link	Bond lengths			Bond angles		
					Counts	RMSZ	$\# Z  > 2$	Counts	RMSZ	$\# Z  > 2$
2	KH5	B	1201	-	34,40,40	0.91	3 (8%)	42,57,57	0.95	2 (4%)
2	KH5	A	1201	-	34,40,40	0.72	2 (5%)	42,57,57	0.98	3 (7%)

In the following table, the Chirals column lists the number of chiral outliers, the number of chiral centers analysed, the number of these observed in the model and the number defined in the Chemical Component Dictionary. Similar counts are reported in the Torsion and Rings columns.

'-' means no outliers of that kind were identified.

Mol	Type	Chain	Res	Link	Chirals	Torsions	Rings
2	KH5	B	1201	-	-	9/24/44/44	0/5/5/5
2	KH5	A	1201	-	-	9/24/44/44	0/5/5/5

All (5) bond length outliers are listed below:

Mol	Chain	Res	Type	Atoms	Z	Observed(Å)	Ideal(Å)
2	B	1201	KH5	C21-C18	-3.12	1.41	1.49
2	A	1201	KH5	C21-C18	-2.59	1.42	1.49
2	B	1201	KH5	C2-C3	2.46	1.44	1.41
2	A	1201	KH5	C2-C3	2.27	1.43	1.41
2	B	1201	KH5	C5-C4	-2.27	1.47	1.51

All (5) bond angle outliers are listed below:

Mol	Chain	Res	Type	Atoms	Z	Observed(°)	Ideal(°)
2	B	1201	KH5	C1-N2-C9	4.69	127.74	124.18
2	A	1201	KH5	C1-N2-C9	4.24	127.40	124.18
2	B	1201	KH5	C1-N2-N1	2.47	113.18	111.69
2	A	1201	KH5	C1-N2-N1	2.29	113.07	111.69
2	A	1201	KH5	C27-C28-N6	-2.28	175.10	178.11

There are no chirality outliers.

All (18) torsion outliers are listed below:

Mol	Chain	Res	Type	Atoms
2	A	1201	KH5	C10-C9-N2-N1
2	A	1201	KH5	C13-C9-N2-N1
2	A	1201	KH5	C27-C9-N2-N1
2	A	1201	KH5	C10-C9-N2-C1
2	A	1201	KH5	C13-C9-N2-C1
2	A	1201	KH5	C27-C9-N2-C1
2	B	1201	KH5	C13-C9-N2-N1
2	B	1201	KH5	C27-C9-N2-N1
2	B	1201	KH5	C10-C9-N2-C1
2	A	1201	KH5	C19-C18-C21-C22
2	A	1201	KH5	C17-C18-C21-C22
2	B	1201	KH5	C13-C9-N2-C1
2	B	1201	KH5	C17-C18-C21-C22
2	B	1201	KH5	C17-C18-C21-C26
2	B	1201	KH5	C10-C9-N2-N1

*Continued on next page...*

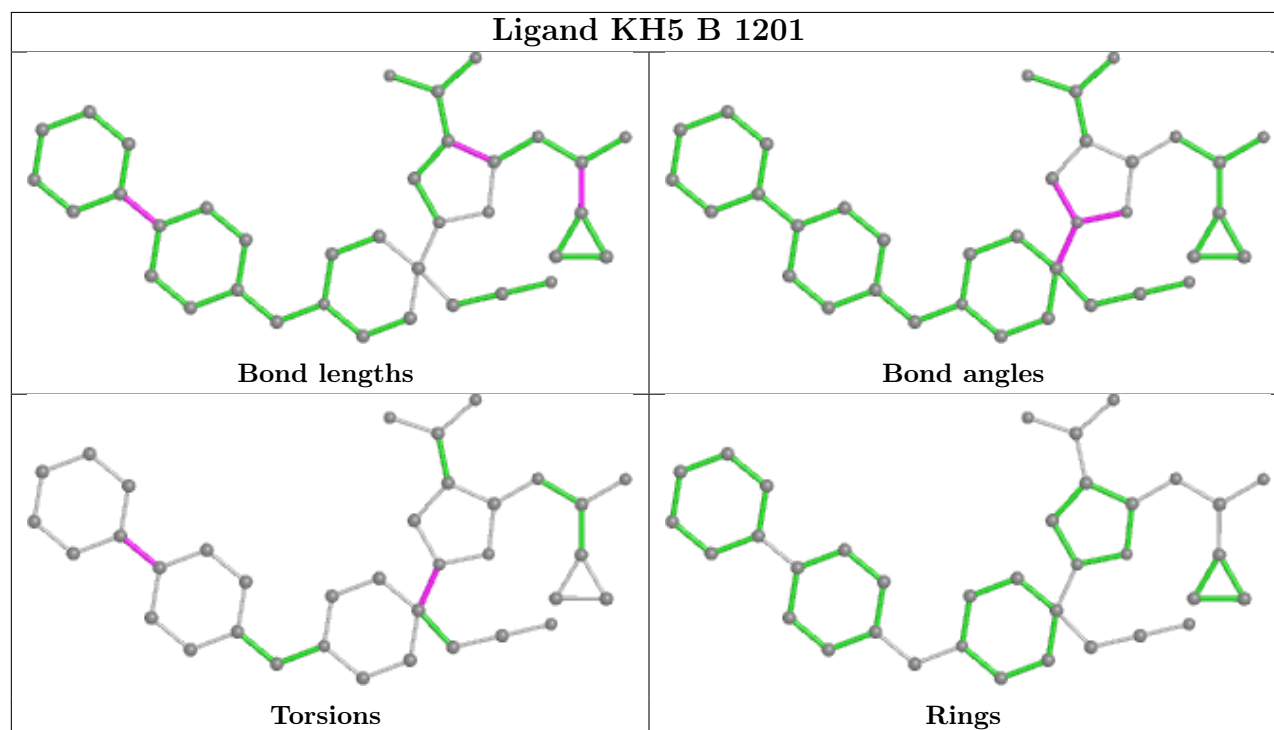
*Continued from previous page...*

Mol	Chain	Res	Type	Atoms
2	A	1201	KH5	C19-C18-C21-C26
2	B	1201	KH5	C27-C9-N2-C1
2	B	1201	KH5	C19-C18-C21-C22

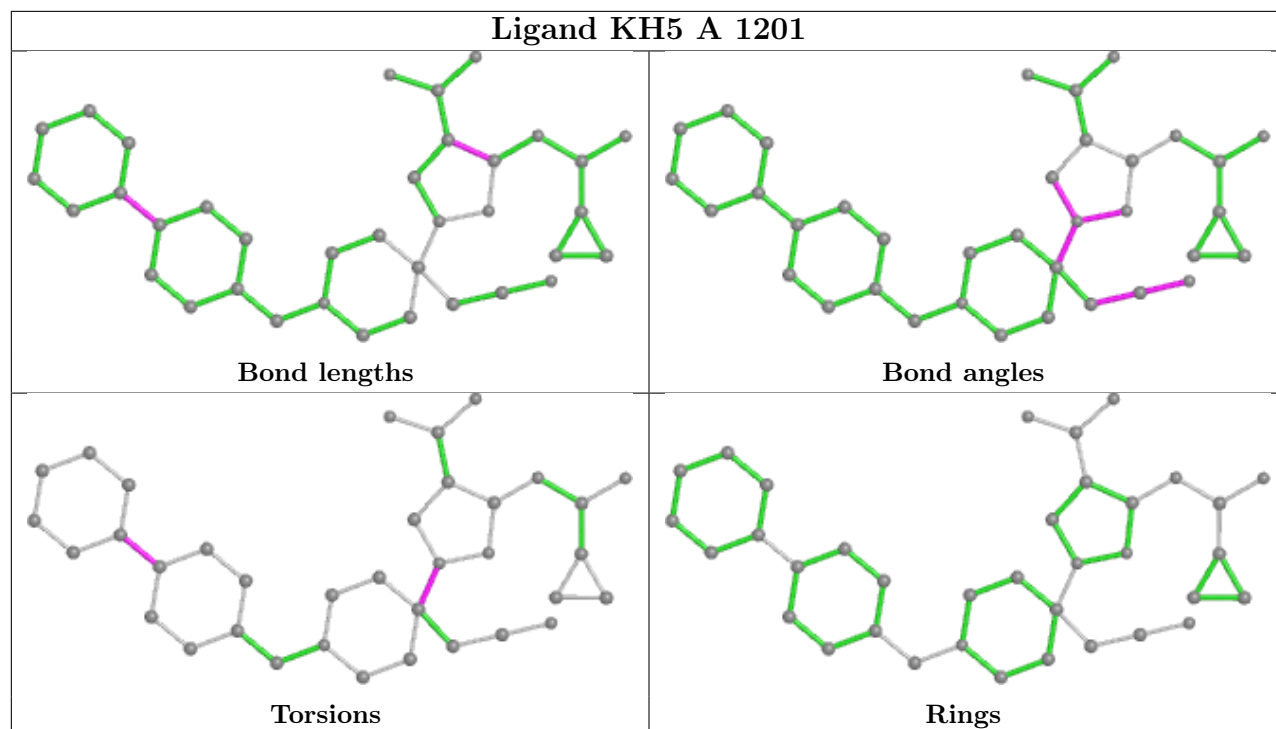
There are no ring outliers.

No monomer is involved in short contacts.

The following is a two-dimensional graphical depiction of Mogul quality analysis of bond lengths, bond angles, torsion angles, and ring geometry for all instances of the Ligand of Interest. In addition, ligands with molecular weight > 250 and outliers as shown on the validation Tables will also be included. For torsion angles, if less than 5% of the Mogul distribution of torsion angles is within 10 degrees of the torsion angle in question, then that torsion angle is considered an outlier. Any bond that is central to one or more torsion angles identified as an outlier by Mogul will be highlighted in the graph. For rings, the root-mean-square deviation (RMSD) between the ring in question and similar rings identified by Mogul is calculated over all ring torsion angles. If the average RMSD is greater than 60 degrees and the minimal RMSD between the ring in question and any Mogul-identified rings is also greater than 60 degrees, then that ring is considered an outlier. The outliers are highlighted in purple. The color gray indicates Mogul did not find sufficient equivalents in the CSD to analyse the geometry.







## 5.7 Other polymers [i](#)

There are no such residues in this entry.

## 5.8 Polymer linkage issues [i](#)

There are no chain breaks in this entry.

## 6 Fit of model and data

### 6.1 Protein, DNA and RNA chains

In the following table, the column labelled ‘#RSRZ> 2’ contains the number (and percentage) of RSRZ outliers, followed by percent RSRZ outliers for the chain as percentile scores relative to all X-ray entries and entries of similar resolution. The OWAB column contains the minimum, median, 95<sup>th</sup> percentile and maximum values of the occupancy-weighted average B-factor per residue. The column labelled ‘Q< 0.9’ lists the number of (and percentage) of residues with an average occupancy less than 0.9.

Mol	Chain	Analysed	<RSRZ>	#RSRZ>2		OWAB(Å <sup>2</sup> )	Q<0.9
1	A	284/302 (94%)	0.77	25 (8%)	10 9	8, 15, 32, 70	0
1	B	279/302 (92%)	0.79	26 (9%)	8 8	8, 15, 33, 52	0
All	All	563/604 (93%)	0.78	51 (9%)	9 8	8, 15, 33, 70	0

All (51) RSRZ outliers are listed below:

Mol	Chain	Res	Type	RSRZ
1	A	1097	GLY	11.2
1	A	914	SER	6.3
1	B	1031	ASP	5.7
1	A	1094[A]	PRO	5.6
1	A	916	GLY	5.6
1	A	913	GLU	5.4
1	B	885	HIS	5.4
1	A	865	VAL	5.3
1	B	1094	PRO	5.2
1	A	885	HIS	5.1
1	A	946	GLU	4.7
1	B	1030	THR	4.5
1	B	946	GLU	4.5
1	A	1096	HIS	4.4
1	B	951	GLY	4.3
1	A	998	GLN	4.2
1	B	1098	GLN	4.2
1	A	917	ASN	4.1
1	A	1095[A]	THR	3.9
1	A	1031	ASP	3.7
1	B	1041	ARG	3.6
1	B	911	LYS	3.5
1	B	1039	ASP	3.4
1	B	1095	THR	3.3

*Continued on next page...*

*Continued from previous page...*

Mol	Chain	Res	Type	RSRZ
1	A	1041	ARG	3.1
1	A	1040	ASP	3.1
1	A	1037	VAL	3.0
1	B	919	ILE	3.0
1	A	1030	THR	2.8
1	B	1103	ARG	2.7
1	A	912	PRO	2.7
1	B	1029	GLU	2.6
1	B	886	PHE	2.6
1	A	915	GLY	2.5
1	B	1091	MET	2.5
1	B	1058	PHE	2.5
1	B	1090	LYS	2.4
1	B	933	TYR	2.3
1	B	1099	MET	2.3
1	B	912	PRO	2.2
1	B	1028	ILE	2.2
1	B	1123	GLU	2.2
1	A	1038	LYS	2.2
1	A	1090	LYS	2.2
1	B	1056	SER	2.2
1	A	1042	ASP	2.1
1	B	1038	LYS	2.1
1	A	1098	GLN	2.1
1	A	1039	ASP	2.0
1	B	1037	VAL	2.0
1	A	1154	LYS	2.0

## 6.2 Non-standard residues in protein, DNA, RNA chains

In the following table, the Atoms column lists the number of modelled atoms in the group and the number defined in the chemical component dictionary. The B-factors column lists the minimum, median, 95<sup>th</sup> percentile and maximum values of B factors of atoms in the group. The column labelled 'Q< 0.9' lists the number of atoms with occupancy less than 0.9.

Mol	Type	Chain	Res	Atoms	RSCC	RSR	B-factors( $\text{\AA}^2$ )	Q<0.9
1	PTR	B	1034	16/17	0.78	0.22	21,23,35,35	0
1	PTR	B	1035	16/17	0.80	0.17	19,26,37,39	0
1	PTR	A	1035	16/17	0.81	0.15	16,22,41,41	0
1	PTR	A	1034	16/17	0.90	0.20	17,18,31,35	0

## 6.3 Carbohydrates [i](#)

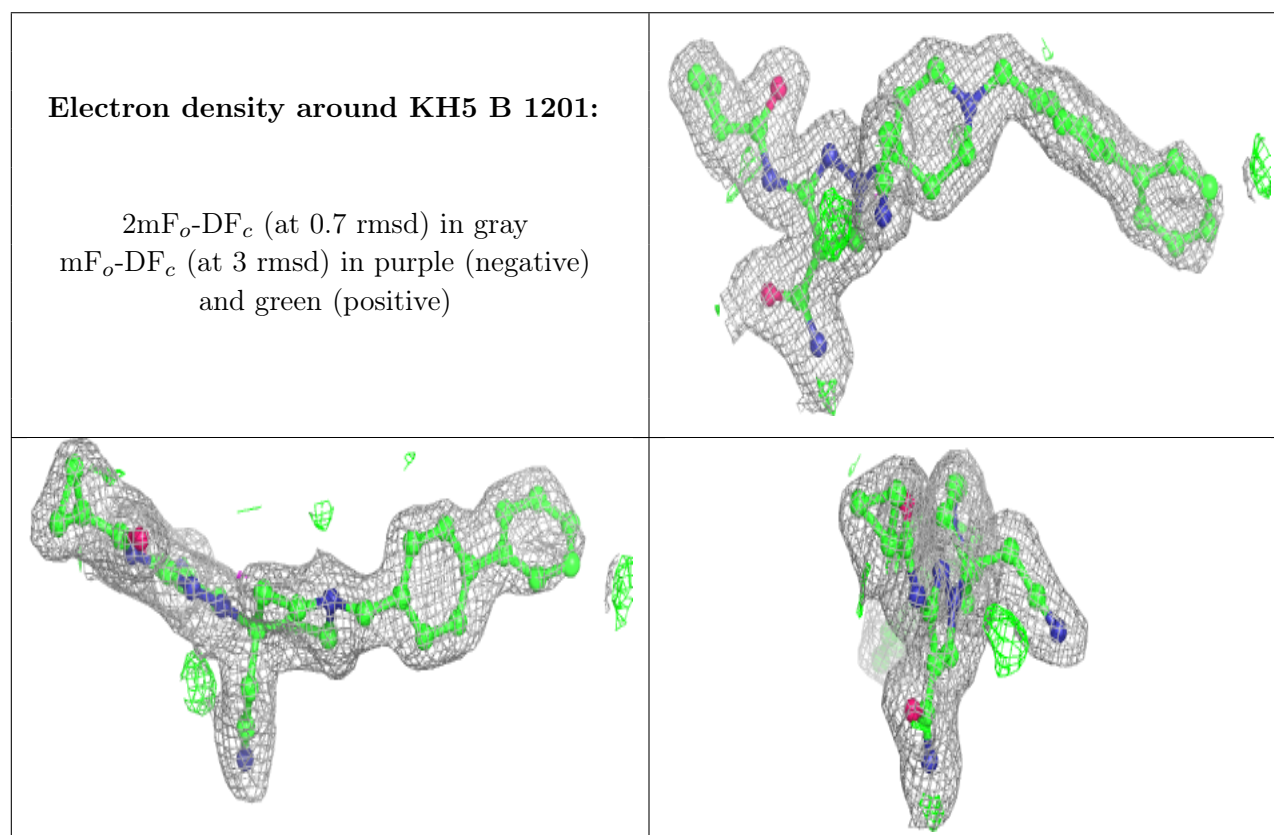
There are no monosaccharides in this entry.

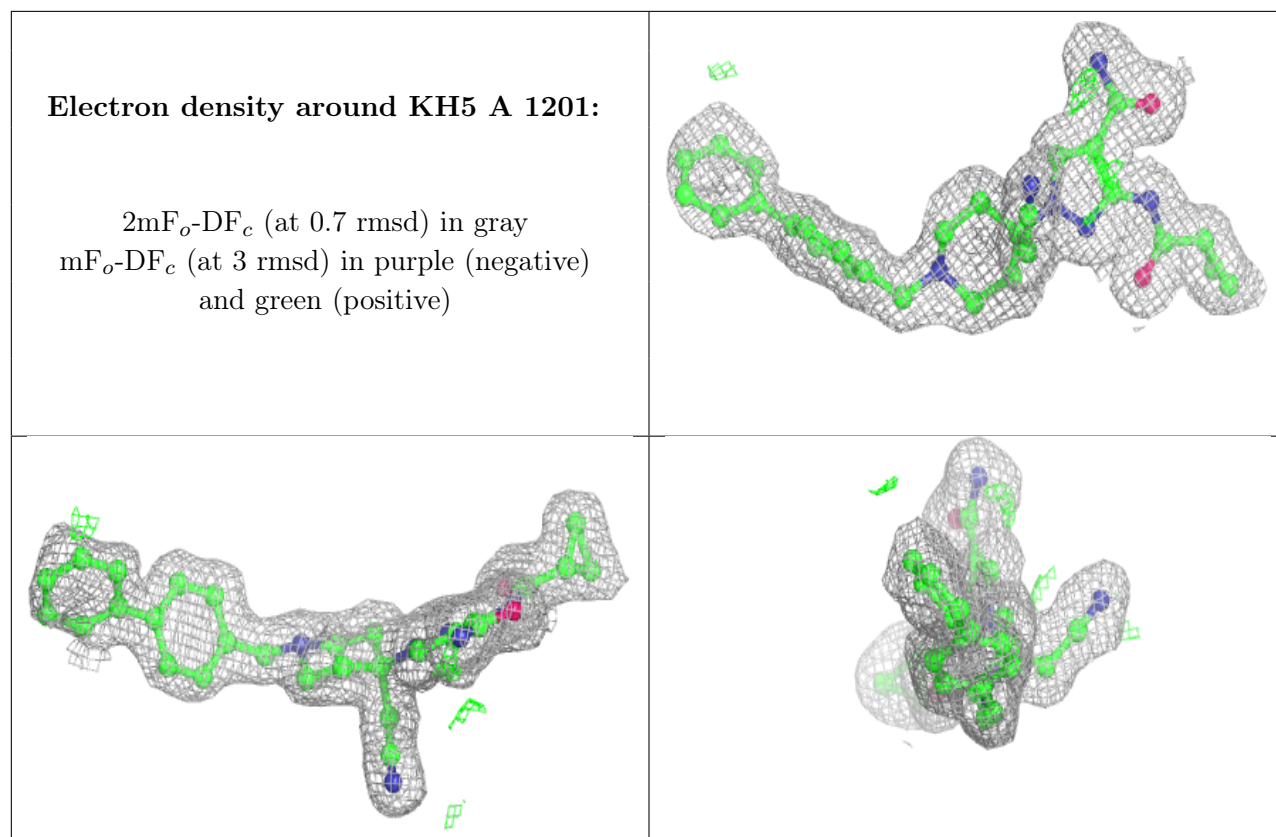
## 6.4 Ligands [i](#)

In the following table, the Atoms column lists the number of modelled atoms in the group and the number defined in the chemical component dictionary. The B-factors column lists the minimum, median, 95<sup>th</sup> percentile and maximum values of B factors of atoms in the group. The column labelled 'Q<0.9' lists the number of atoms with occupancy less than 0.9.

Mol	Type	Chain	Res	Atoms	RSCC	RSR	B-factors( $\text{\AA}^2$ )	Q<0.9
2	KH5	B	1201	36/36	0.93	0.16	9,14,30,31	0
2	KH5	A	1201	36/36	0.94	0.15	9,13,30,33	0

The following is a graphical depiction of the model fit to experimental electron density of all instances of the Ligand of Interest. In addition, ligands with molecular weight > 250 and outliers as shown on the geometry validation Tables will also be included. Each fit is shown from different orientation to approximate a three-dimensional view.





## 6.5 Other polymers [i](#)

There are no such residues in this entry.