



wwPDB EM Validation Summary Report ⓘ

Jan 20, 2025 – 07:36 pm GMT

PDB ID : 8ROQ
EMDB ID : EMD-19401
Title : FAdV-C4 Aviadenovirus structure, strain KR5
Authors : Perez-Illana, M.P.; Schachnner, A.; Condezo, G.N.; Hernando-Perez, M.; Martinez, M.; Marabini, R.; Hess, M.; San Martin, C.
Deposited on : 2024-01-12
Resolution : 3.40 Å(reported)

This is a wwPDB EM Validation Summary Report for a publicly released PDB entry.

We welcome your comments at validation@mail.wwpdb.org

A user guide is available at

<https://www.wwpdb.org/validation/2017/EMValidationReportHelp>
with specific help available everywhere you see the ⓘ symbol.

The types of validation reports are described at

<http://www.wwpdb.org/validation/2017/FAQs#types>.

The following versions of software and data (see [references ⓘ](#)) were used in the production of this report:

EMDB validation analysis : 0.0.1.dev113
MolProbity : 4.02b-467
Percentile statistics : 20231227.v01 (using entries in the PDB archive December 27th 2023)
MapQ : 1.9.13
Ideal geometry (proteins) : Engh & Huber (2001)
Ideal geometry (DNA, RNA) : Parkinson et al. (1996)
Validation Pipeline (wwPDB-VP) : 2.40

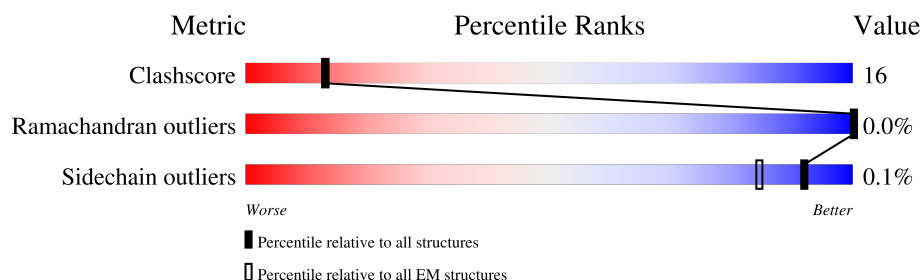
1 Overall quality at a glance

The following experimental techniques were used to determine the structure:

ELECTRON MICROSCOPY

The reported resolution of this entry is 3.40 Å.

Percentile scores (ranging between 0-100) for global validation metrics of the entry are shown in the following graphic. The table shows the number of entries on which the scores are based.



Metric	Whole archive (#Entries)	EM structures (#Entries)
Clashscore	210492	15764
Ramachandran outliers	207382	16835
Sidechain outliers	206894	16415

The table below summarises the geometric issues observed across the polymeric chains and their fit to the map. The red, orange, yellow and green segments of the bar indicate the fraction of residues that contain outliers for ≥ 3 , 2, 1 and 0 types of geometric quality criteria respectively. A grey segment represents the fraction of residues that are not modelled. The numeric value for each fraction is indicated below the corresponding segment, with a dot representing fractions $\leq 5\%$. The upper red bar (where present) indicates the fraction of residues that have poor fit to the EM map (all-atom inclusion $< 40\%$). The numeric value is given above the bar.

Mol	Chain	Length	Quality of chain
1	A	937	<div> <div>7%</div> <div>62%</div> <div>37%</div> <div>.</div> </div>
1	B	937	<div> <div>9%</div> <div>61%</div> <div>39%</div> </div>
1	C	937	<div> <div>8%</div> <div>63%</div> <div>36%</div> </div>
1	D	937	<div> <div>7%</div> <div>63%</div> <div>36%</div> <div>.</div> </div>
1	E	937	<div> <div>6%</div> <div>62%</div> <div>36%</div> <div>.</div> </div>
1	F	937	<div> <div>8%</div> <div>64%</div> <div>36%</div> </div>
1	G	937	<div> <div>7%</div> <div>64%</div> <div>35%</div> <div>.</div> </div>
1	H	937	<div> <div>6%</div> <div>64%</div> <div>35%</div> <div>.</div> </div>

Continued on next page...

Continued from previous page...

Mol	Chain	Length	Quality of chain
1	I	937	
1	J	937	
1	K	937	
1	L	937	
2	M	525	
3	N	590	
4	O	247	
4	P	247	

2 Entry composition

There are 4 unique types of molecules in this entry. The entry contains 97638 atoms, of which 0 are hydrogens and 0 are deuteriums.

In the tables below, the AltConf column contains the number of residues with at least one atom in alternate conformation and the Trace column contains the number of residues modelled with at most 2 atoms.

- Molecule 1 is a protein called Hexon protein.

Mol	Chain	Residues	Atoms					AltConf	Trace
1	A	927	Total	C	N	O	S	0	0
			7417	4712	1247	1423	35		
1	B	934	Total	C	N	O	S	0	0
			7466	4743	1254	1434	35		
1	C	934	Total	C	N	O	S	0	0
			7469	4745	1254	1435	35		
1	D	928	Total	C	N	O	S	0	0
			7424	4716	1248	1425	35		
1	E	927	Total	C	N	O	S	0	0
			7417	4712	1247	1423	35		
1	F	935	Total	C	N	O	S	0	0
			7471	4746	1255	1435	35		
1	G	930	Total	C	N	O	S	0	0
			7439	4726	1250	1428	35		
1	H	925	Total	C	N	O	S	0	0
			7404	4704	1245	1420	35		
1	I	927	Total	C	N	O	S	0	0
			7417	4712	1247	1423	35		
1	J	926	Total	C	N	O	S	0	0
			7409	4707	1246	1421	35		
1	K	936	Total	C	N	O	S	0	0
			7479	4751	1256	1437	35		
1	L	927	Total	C	N	O	S	0	0
			7417	4712	1247	1423	35		

- Molecule 2 is a protein called Penton protein.

Mol	Chain	Residues	Atoms					AltConf	Trace
2	M	471	Total	C	N	O	S	0	0
			3646	2298	617	715	16		

- Molecule 3 is a protein called PIIIfa.

Mol	Chain	Residues	Atoms					AltConf	Trace
3	N	244	Total	C	N	O	S	0	0
			1925	1210	342	366	7		

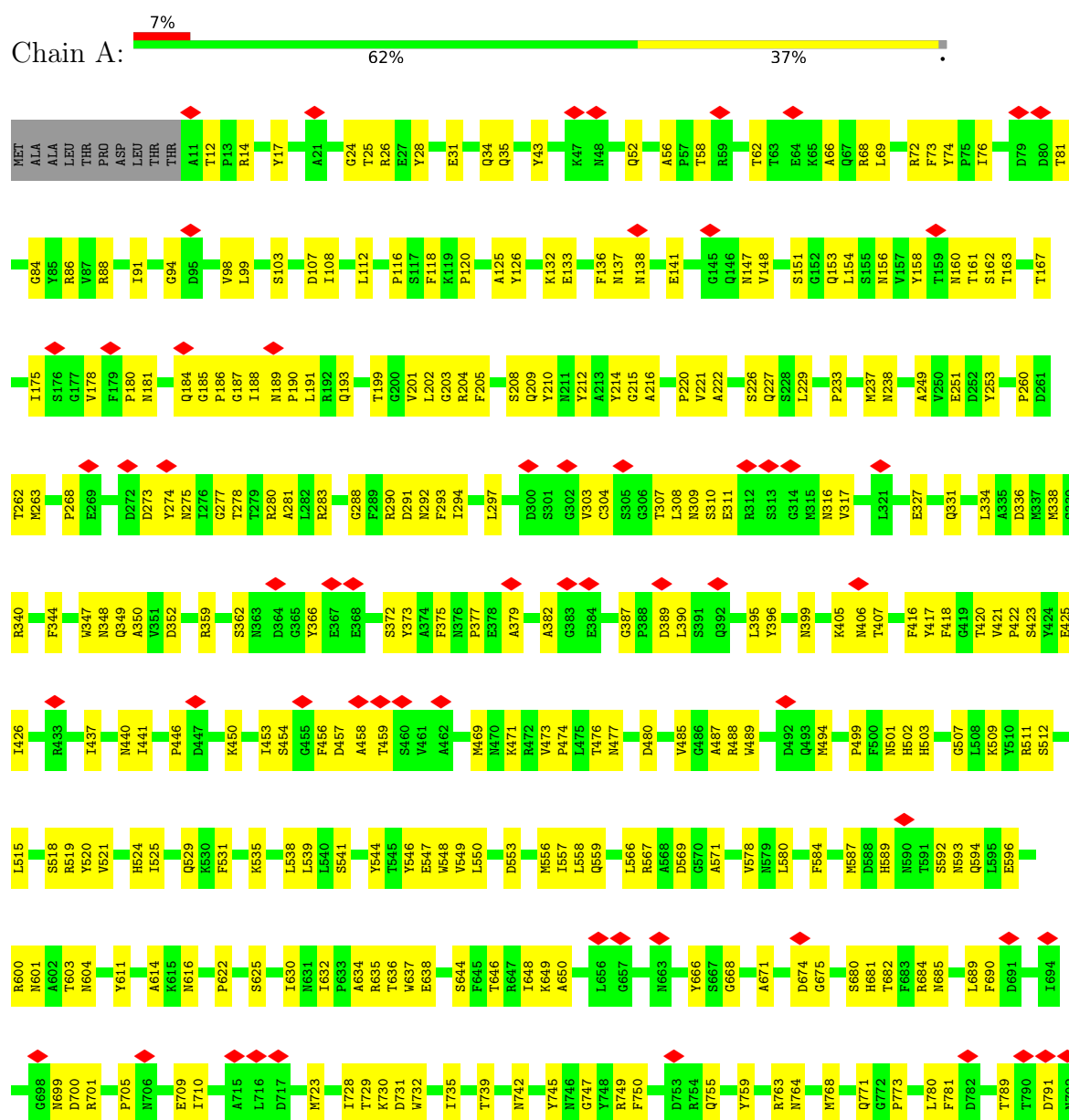
- Molecule 4 is a protein called Pre-hexon-linking protein VIII.

Mol	Chain	Residues	Atoms					AltConf	Trace
4	O	183	Total	C	N	O	S	0	0
			1419	905	237	271	6		
4	P	183	Total	C	N	O	S	0	0
			1419	905	237	271	6		

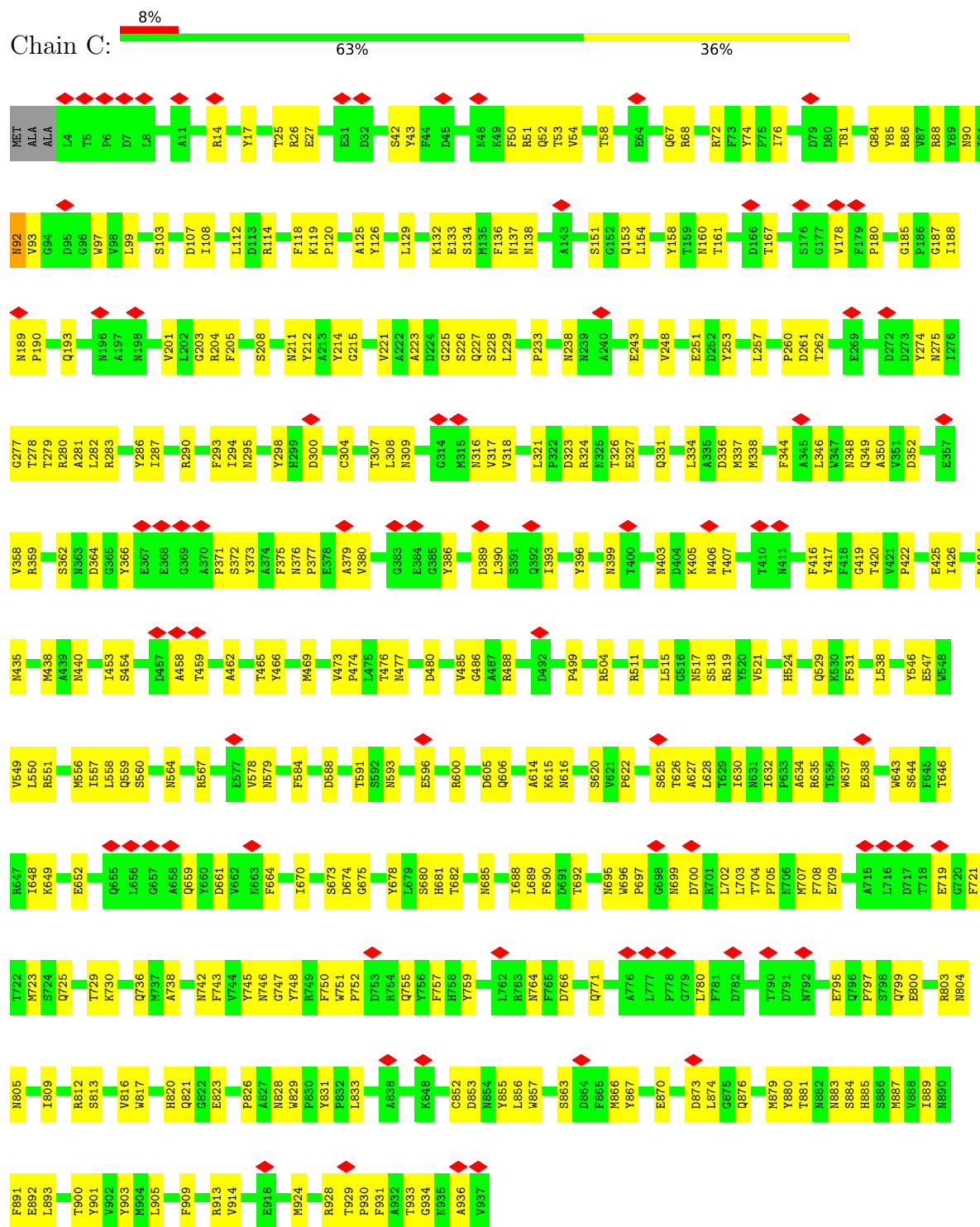
3 Residue-property plots [i](#)

These plots are drawn for all protein, RNA, DNA and oligosaccharide chains in the entry. The first graphic for a chain summarises the proportions of the various outlier classes displayed in the second graphic. The second graphic shows the sequence view annotated by issues in geometry and atom inclusion in map density. Residues are color-coded according to the number of geometric quality criteria for which they contain at least one outlier: green = 0, yellow = 1, orange = 2 and red = 3 or more. A red diamond above a residue indicates a poor fit to the EM map for this residue (all-atom inclusion < 40%). Stretches of 2 or more consecutive residues without any outlier are shown as a green connector. Residues present in the sample, but not in the model, are shown in grey.

• Molecule 1: Hexon protein

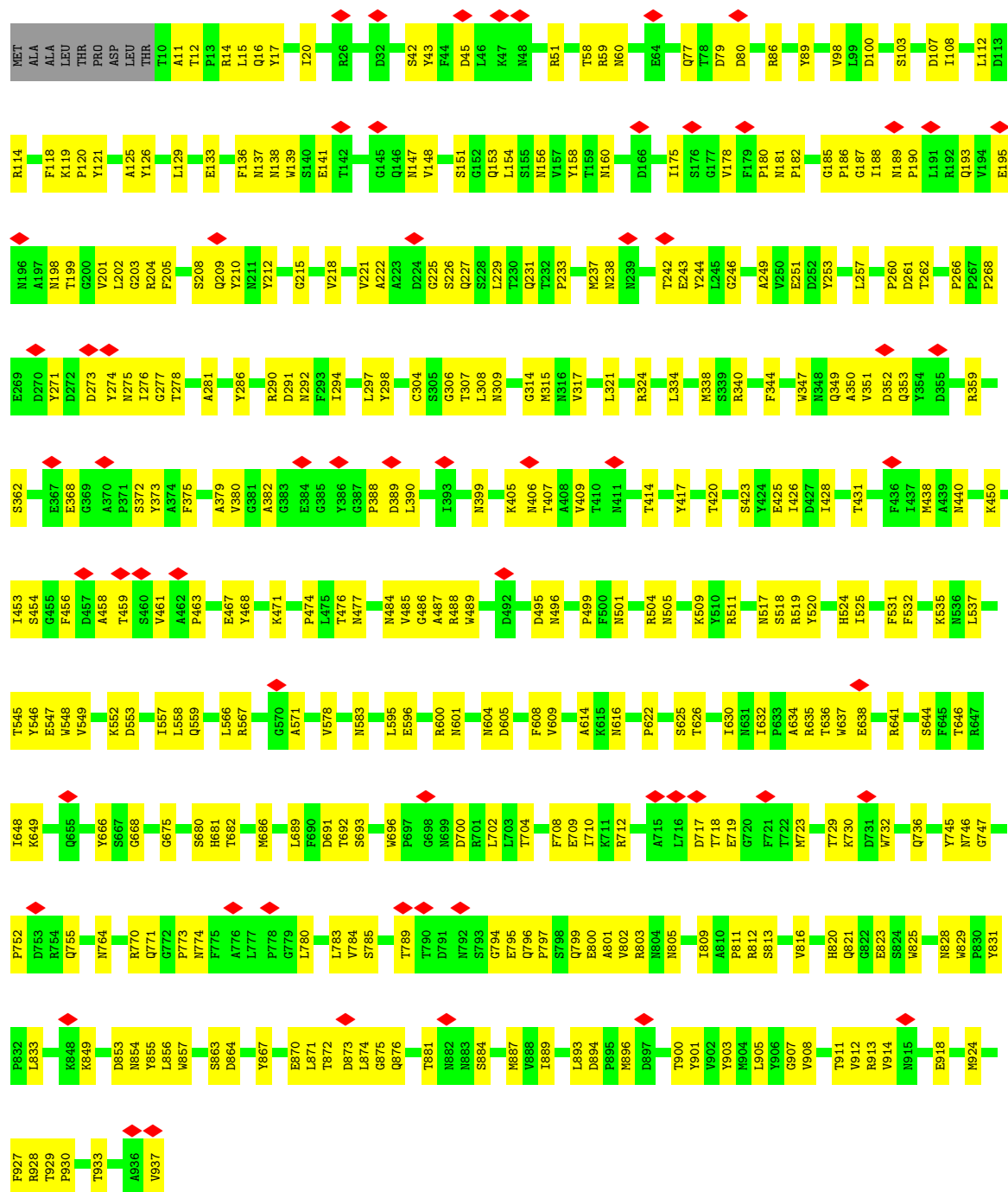


- Molecule 1: Hexon protein

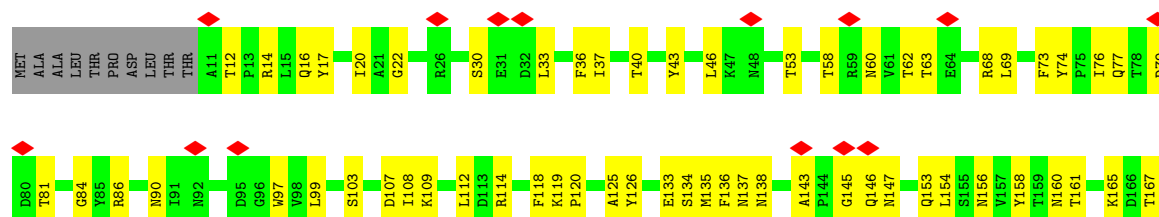


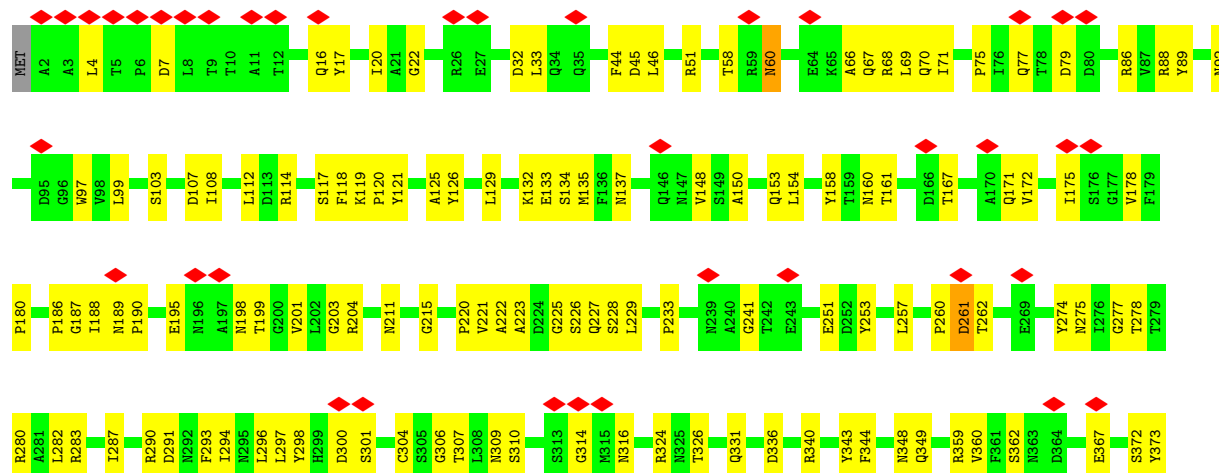
- Molecule 1: Hexon protein

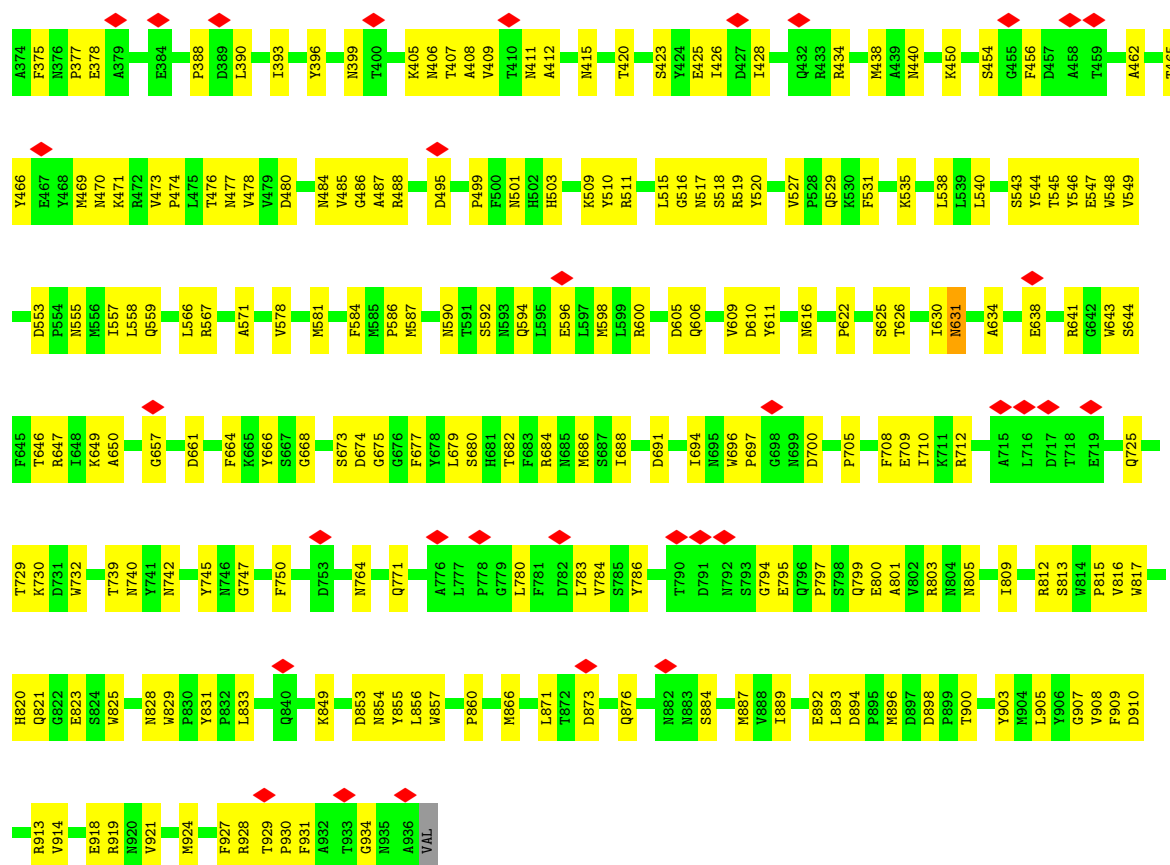




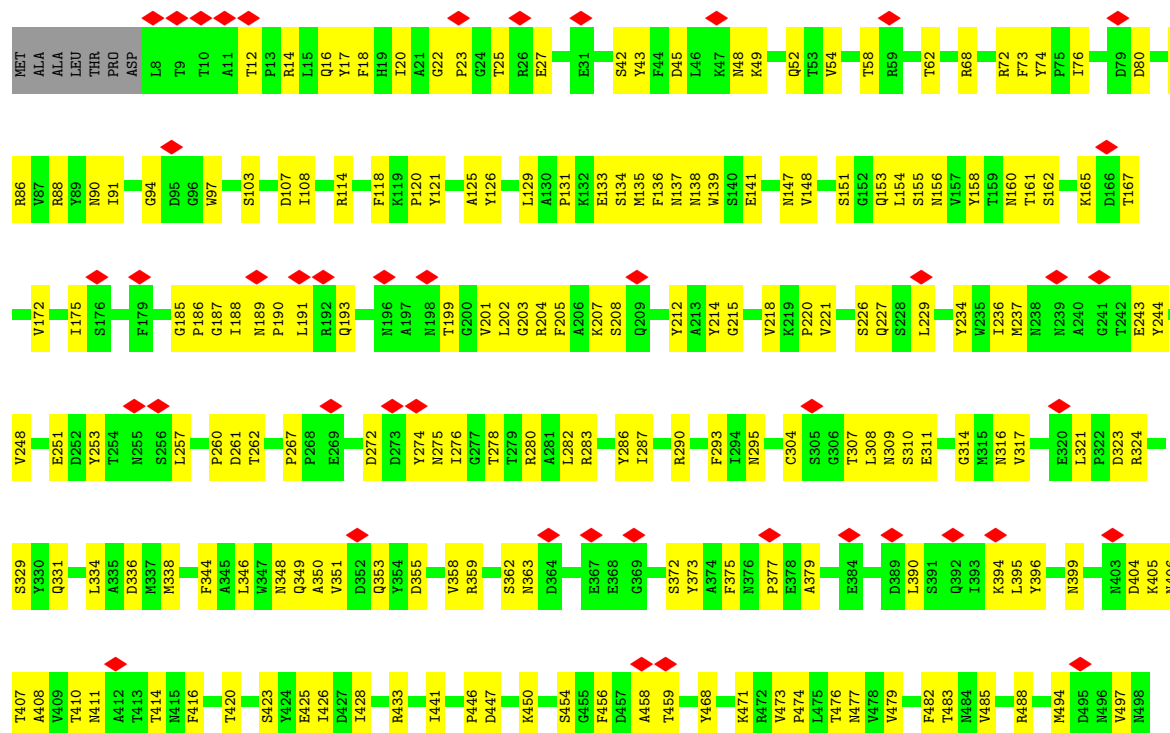
• Molecule 1: Hexon protein

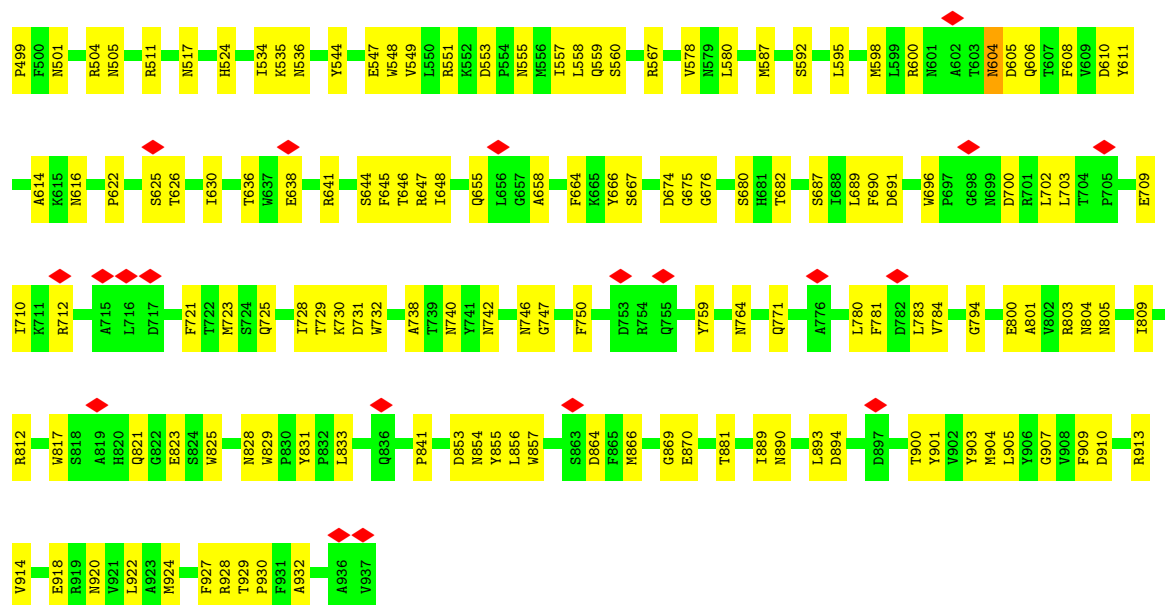




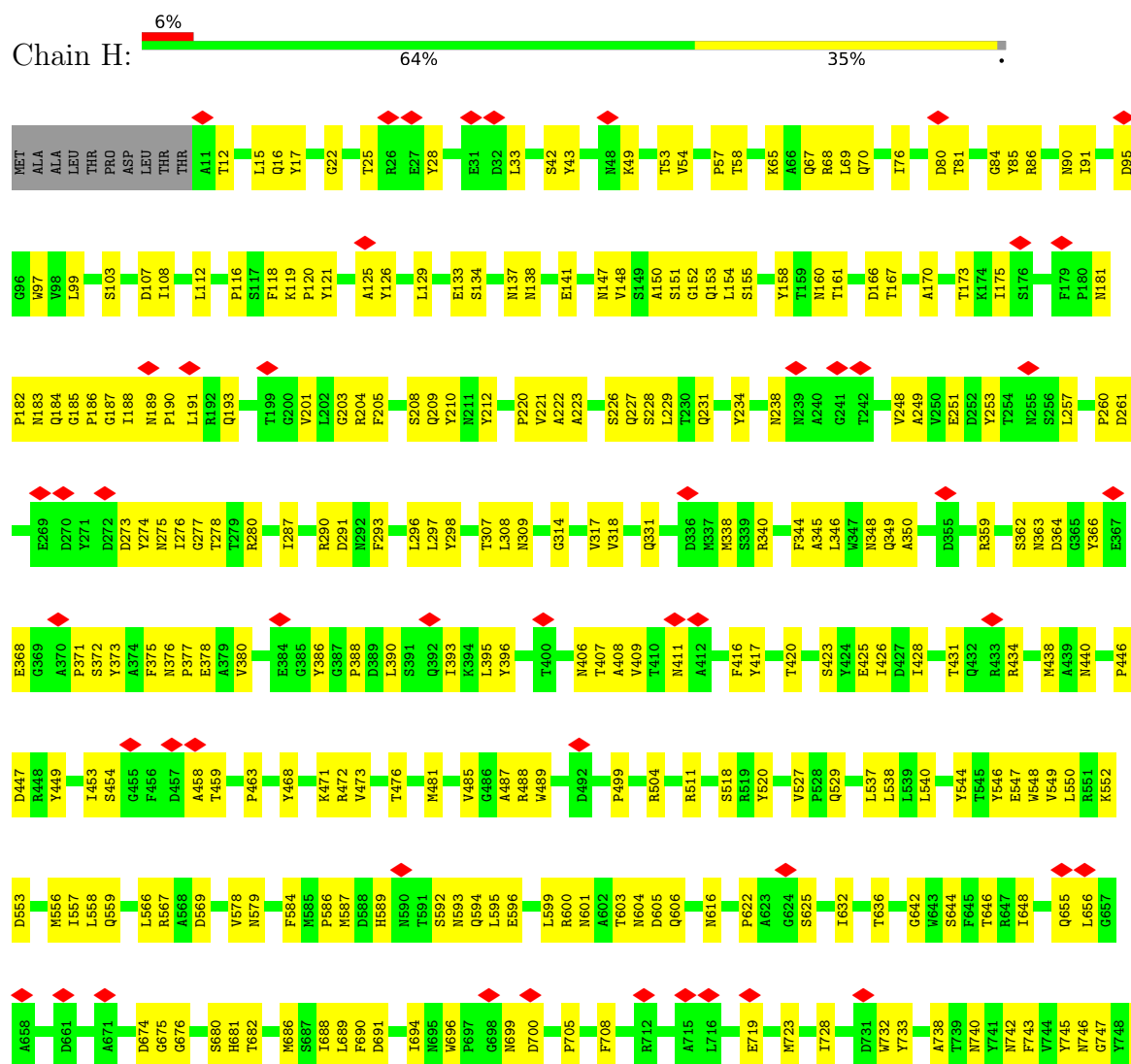


• Molecule 1: Hexon protein

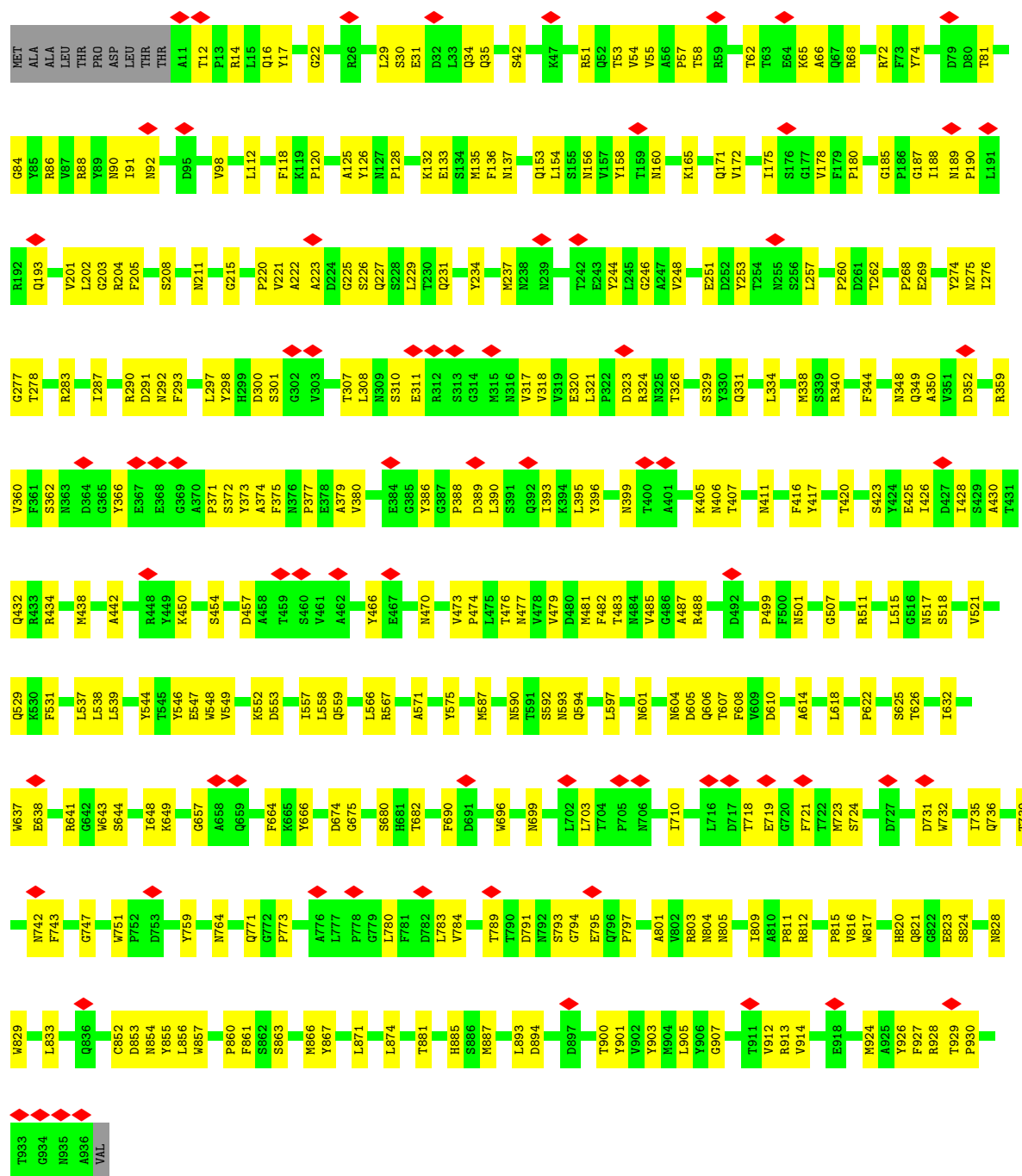




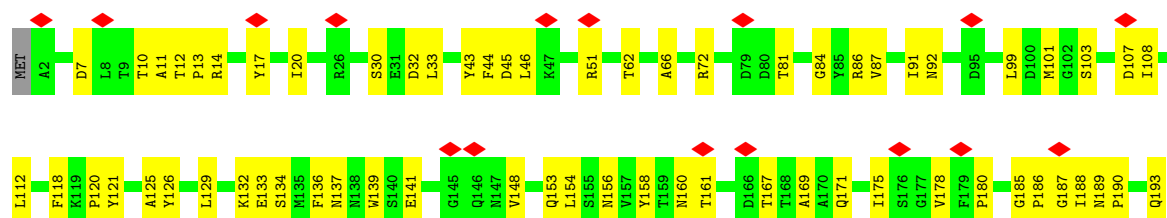
• Molecule 1: Hexon protein



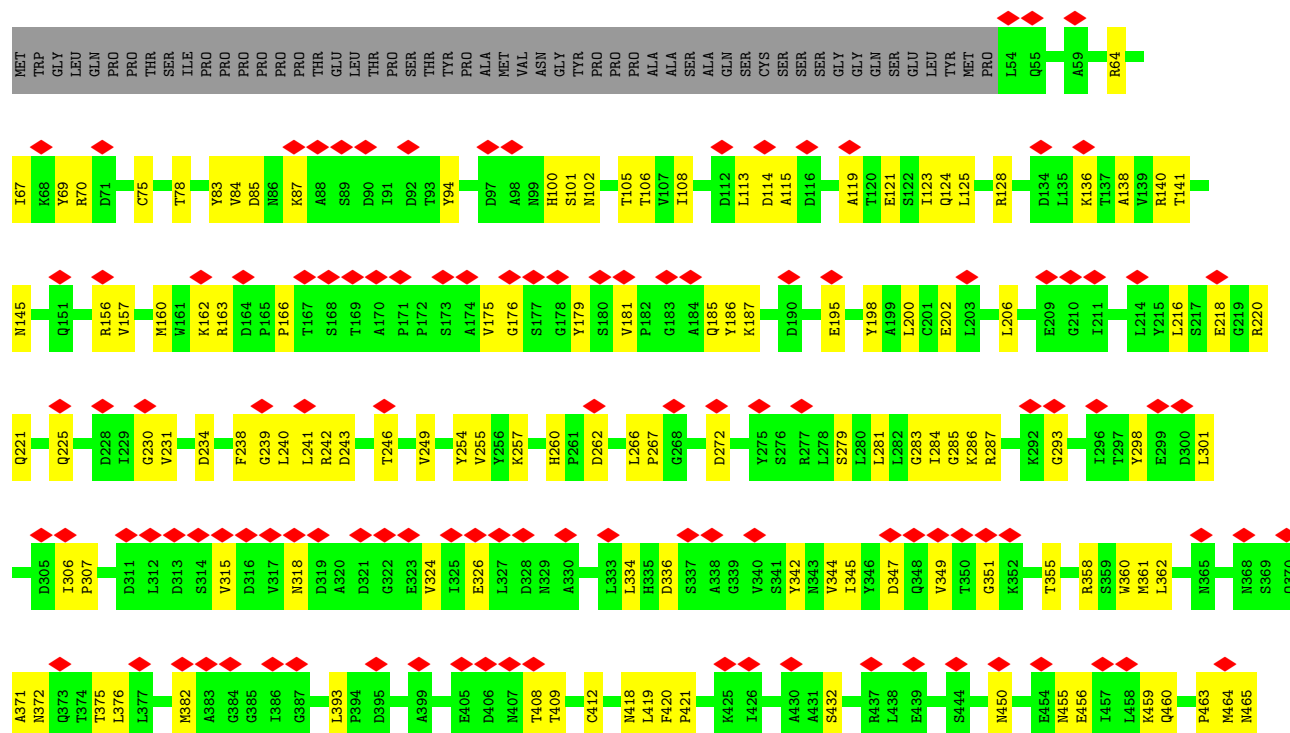


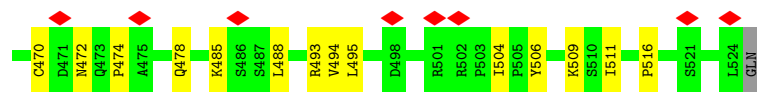


• Molecule 1: Hexon protein

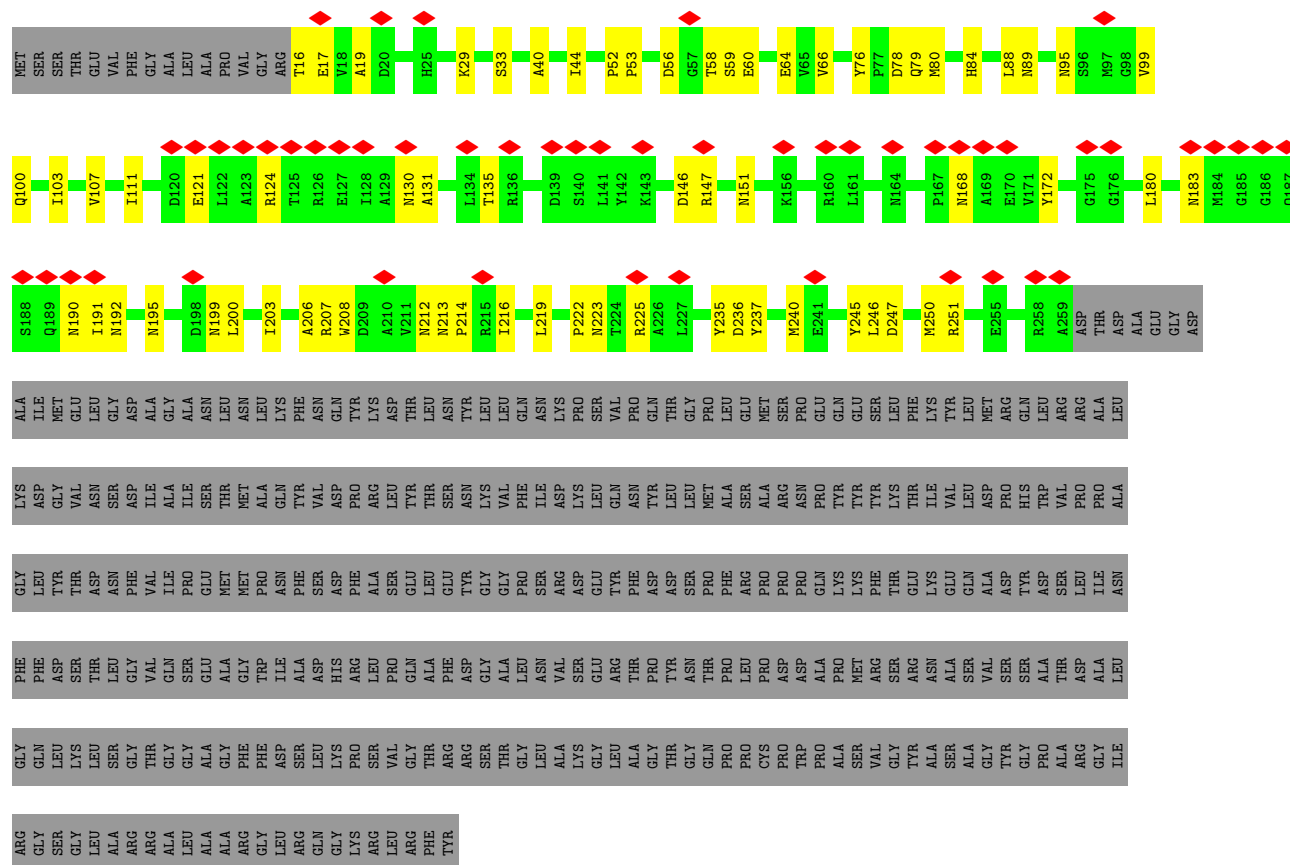
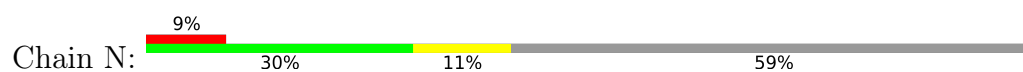




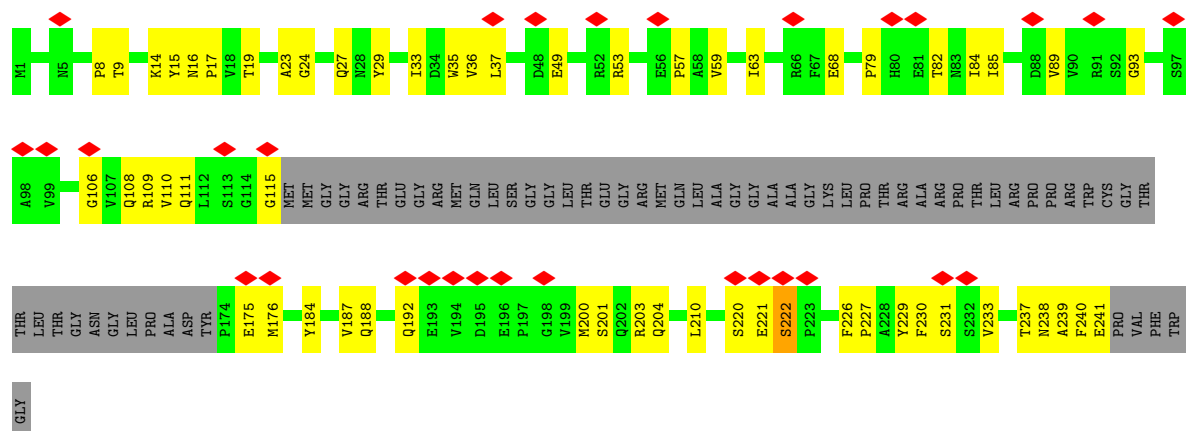




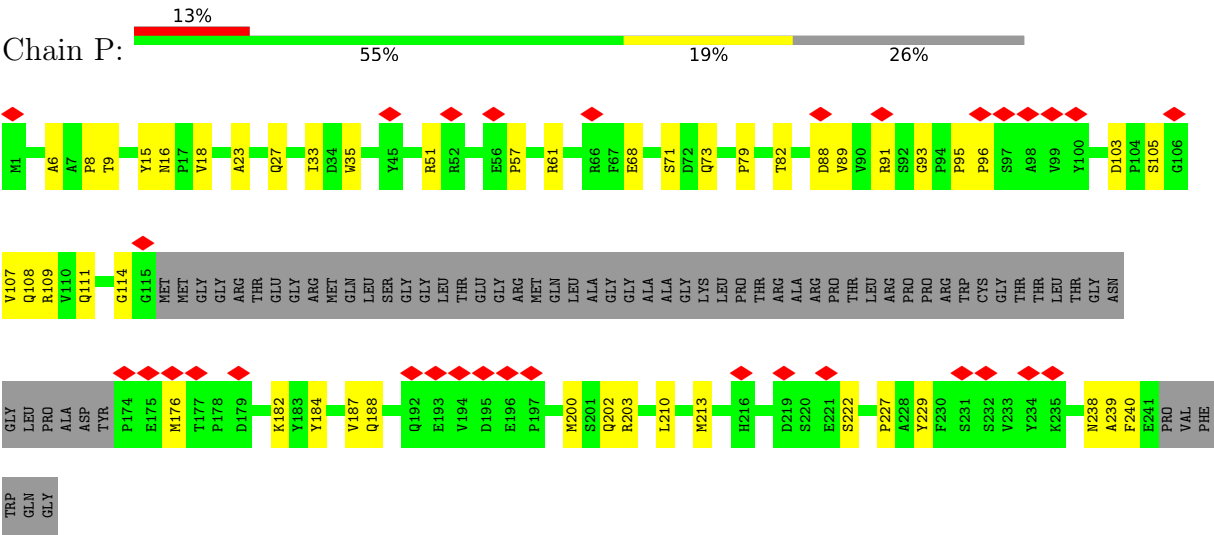
• Molecule 3: PIIIA



• Molecule 4: Pre-hexon-linking protein VIII



● Molecule 4: Pre-hexon-linking protein VIII



4 Experimental information

Property	Value	Source
EM reconstruction method	SINGLE PARTICLE	Depositor
Imposed symmetry	POINT, Not provided	
Number of particles used	9466	Depositor
Resolution determination method	FSC 0.143 CUT-OFF	Depositor
CTF correction method	PHASE FLIPPING ONLY	Depositor
Microscope	FEI TITAN KRIOS	Depositor
Voltage (kV)	300	Depositor
Electron dose ($e^-/\text{\AA}^2$)	40.5	Depositor
Minimum defocus (nm)	1000	Depositor
Maximum defocus (nm)	2500	Depositor
Magnification	95890	Depositor
Image detector	FEI FALCON III (4k x 4k)	Depositor
Maximum map value	0.168	Depositor
Minimum map value	-0.105	Depositor
Average map value	0.001	Depositor
Map value standard deviation	0.015	Depositor
Recommended contour level	0.04	Depositor
Map size (\AA)	1042.25, 1042.25, 1042.25	wwPDB
Map dimensions	758, 758, 758	wwPDB
Map angles ($^\circ$)	90.0, 90.0, 90.0	wwPDB
Pixel spacing (\AA)	1.375, 1.375, 1.375	Depositor

5 Model quality

5.1 Standard geometry

The Z score for a bond length (or angle) is the number of standard deviations the observed value is removed from the expected value. A bond length (or angle) with $|Z| > 5$ is considered an outlier worth inspection. RMSZ is the root-mean-square of all Z scores of the bond lengths (or angles).

Mol	Chain	Bond lengths		Bond angles	
		RMSZ	$\# Z > 5$	RMSZ	$\# Z > 5$
1	A	0.29	0/7630	0.51	0/10407
1	B	0.28	0/7680	0.51	1/10479 (0.0%)
1	C	0.29	0/7683	0.52	0/10482
1	D	0.29	0/7637	0.51	0/10417
1	E	0.29	0/7630	0.51	0/10407
1	F	0.29	0/7685	0.51	0/10486
1	G	0.29	0/7652	0.51	0/10438
1	H	0.29	0/7617	0.51	0/10390
1	I	0.29	0/7630	0.50	0/10407
1	J	0.29	0/7622	0.51	0/10397
1	K	0.29	0/7693	0.52	0/10496
1	L	0.29	0/7630	0.51	0/10407
2	M	0.28	0/3728	0.52	0/5094
3	N	0.27	0/1961	0.50	0/2655
4	O	0.30	0/1466	0.53	0/2005
4	P	0.30	0/1466	0.53	1/2005 (0.0%)
All	All	0.29	0/100410	0.51	2/136972 (0.0%)

Chiral center outliers are detected by calculating the chiral volume of a chiral center and verifying if the center is modelled as a planar moiety or with the opposite hand. A planarity outlier is detected by checking planarity of atoms in a peptide group, atoms in a mainchain group or atoms of a sidechain that are expected to be planar.

Mol	Chain	#Chirality outliers	#Planarity outliers
4	O	0	1
4	P	0	1
All	All	0	2

There are no bond length outliers.

All (2) bond angle outliers are listed below:

Mol	Chain	Res	Type	Atoms	Z	Observed(°)	Ideal(°)
4	P	71	SER	C-N-CA	5.21	134.72	121.70

Continued on next page...

Continued from previous page...

Mol	Chain	Res	Type	Atoms	Z	Observed(°)	Ideal(°)
1	B	700	ASP	CB-CG-OD2	5.07	122.86	118.30

There are no chirality outliers.

All (2) planarity outliers are listed below:

Mol	Chain	Res	Type	Group
4	O	222	SER	Peptide
4	P	222	SER	Peptide

5.2 Too-close contacts ⓘ

In the following table, the Non-H and H(model) columns list the number of non-hydrogen atoms and hydrogen atoms in the chain respectively. The H(added) column lists the number of hydrogen atoms added and optimized by MolProbity. The Clashes column lists the number of clashes within the asymmetric unit, whereas Symm-Clashes lists symmetry-related clashes.

Mol	Chain	Non-H	H(model)	H(added)	Clashes	Symm-Clashes
1	A	7417	0	7005	296	0
1	B	7466	0	7055	310	0
1	C	7469	0	7059	291	0
1	D	7424	0	7012	292	0
1	E	7417	0	7005	322	0
1	F	7471	0	7060	280	0
1	G	7439	0	7030	291	0
1	H	7404	0	6991	269	0
1	I	7417	0	7005	286	0
1	J	7409	0	6996	273	0
1	K	7479	0	7069	315	0
1	L	7417	0	7005	299	0
2	M	3646	0	3572	86	0
3	N	1925	0	1897	39	0
4	O	1419	0	1339	56	0
4	P	1419	0	1339	39	0
All	All	97638	0	92439	3058	0

The all-atom clashscore is defined as the number of clashes found per 1000 atoms (including hydrogen atoms). The all-atom clashscore for this structure is 16.

The worst 5 of 3058 close contacts within the same asymmetric unit are listed below, sorted by their clash magnitude.

Atom-1	Atom-2	Interatomic distance (Å)	Clash overlap (Å)
1:I:538:LEU:HB3	1:I:606:GLN:HE22	1.30	0.96
1:D:189:ASN:HD21	1:F:133:GLU:HB2	1.38	0.88
1:C:295:ASN:HB3	1:C:556:MET:HG3	1.58	0.85
1:G:185:GLY:H	1:I:821:GLN:HG3	1.44	0.82
1:E:74:TYR:O	1:L:77:GLN:NE2	2.13	0.82

There are no symmetry-related clashes.

5.3 Torsion angles [i](#)

5.3.1 Protein backbone [i](#)

In the following table, the Percentiles column shows the percent Ramachandran outliers of the chain as a percentile score with respect to all PDB entries followed by that with respect to all EM entries.

The Analysed column shows the number of residues for which the backbone conformation was analysed, and the total number of residues.

Mol	Chain	Analysed	Favoured	Allowed	Outliers	Percentiles	
1	A	925/937 (99%)	849 (92%)	76 (8%)	0	100	100
1	B	932/937 (100%)	865 (93%)	65 (7%)	2 (0%)	44	72
1	C	932/937 (100%)	864 (93%)	68 (7%)	0	100	100
1	D	926/937 (99%)	853 (92%)	73 (8%)	0	100	100
1	E	925/937 (99%)	850 (92%)	75 (8%)	0	100	100
1	F	933/937 (100%)	858 (92%)	74 (8%)	1 (0%)	48	78
1	G	928/937 (99%)	849 (92%)	79 (8%)	0	100	100
1	H	923/937 (98%)	854 (92%)	69 (8%)	0	100	100
1	I	925/937 (99%)	847 (92%)	78 (8%)	0	100	100
1	J	924/937 (99%)	858 (93%)	66 (7%)	0	100	100
1	K	934/937 (100%)	858 (92%)	76 (8%)	0	100	100
1	L	925/937 (99%)	855 (92%)	70 (8%)	0	100	100
2	M	469/525 (89%)	422 (90%)	47 (10%)	0	100	100
3	N	242/590 (41%)	233 (96%)	9 (4%)	0	100	100
4	O	179/247 (72%)	152 (85%)	26 (14%)	1 (1%)	22	50
4	P	179/247 (72%)	151 (84%)	27 (15%)	1 (1%)	22	50

Continued on next page...

Continued from previous page...

Mol	Chain	Analysed	Favoured	Allowed	Outliers	Percentiles	
All	All	12201/12853 (95%)	11218 (92%)	978 (8%)	5 (0%)	100	100

All (5) Ramachandran outliers are listed below:

Mol	Chain	Res	Type
1	B	10	THR
1	B	12	THR
1	F	261	ASP
4	O	227	PRO
4	P	227	PRO

5.3.2 Protein sidechains ⓘ

In the following table, the Percentiles column shows the percent sidechain outliers of the chain as a percentile score with respect to all PDB entries followed by that with respect to all EM entries.

The Analysed column shows the number of residues for which the sidechain conformation was analysed, and the total number of residues.

Mol	Chain	Analysed	Rotameric	Outliers	Percentiles	
1	A	801/809 (99%)	801 (100%)	0	100	100
1	B	807/809 (100%)	806 (100%)	1 (0%)	92	97
1	C	808/809 (100%)	805 (100%)	3 (0%)	89	93
1	D	802/809 (99%)	802 (100%)	0	100	100
1	E	801/809 (99%)	799 (100%)	2 (0%)	92	96
1	F	807/809 (100%)	804 (100%)	3 (0%)	89	93
1	G	804/809 (99%)	803 (100%)	1 (0%)	92	97
1	H	800/809 (99%)	800 (100%)	0	100	100
1	I	801/809 (99%)	799 (100%)	2 (0%)	92	96
1	J	800/809 (99%)	800 (100%)	0	100	100
1	K	808/809 (100%)	808 (100%)	0	100	100
1	L	801/809 (99%)	801 (100%)	0	100	100
2	M	408/454 (90%)	408 (100%)	0	100	100
3	N	206/488 (42%)	204 (99%)	2 (1%)	73	83
4	O	150/196 (76%)	150 (100%)	0	100	100

Continued on next page...

Continued from previous page...

Mol	Chain	Analysed	Rotameric	Outliers	Percentiles	
4	P	150/196 (76%)	150 (100%)	0	100	100
All	All	10554/11042 (96%)	10540 (100%)	14 (0%)	92	97

5 of 14 residues with a non-rotameric sidechain are listed below:

Mol	Chain	Res	Type
1	F	415	ASN
1	F	631	ASN
3	N	199	ASN
1	I	567	ARG
3	N	29	LYS

Sometimes sidechains can be flipped to improve hydrogen bonding and reduce clashes. 5 of 61 such sidechains are listed below:

Mol	Chain	Res	Type
1	F	805	ASN
2	M	260	HIS
1	H	189	ASN
2	M	225	GLN
4	P	26	GLN

5.3.3 RNA [i](#)

There are no RNA molecules in this entry.

5.4 Non-standard residues in protein, DNA, RNA chains [i](#)

There are no non-standard protein/DNA/RNA residues in this entry.

5.5 Carbohydrates [i](#)

There are no oligosaccharides in this entry.

5.6 Ligand geometry [i](#)

There are no ligands in this entry.

5.7 Other polymers [i](#)

There are no such residues in this entry.

5.8 Polymer linkage issues [i](#)

There are no chain breaks in this entry.

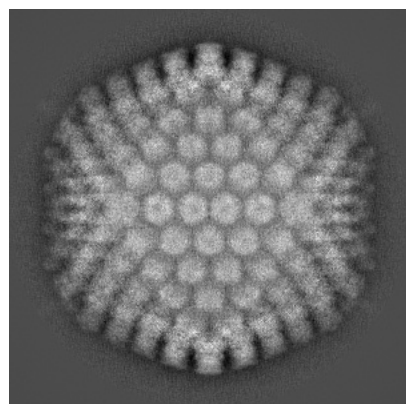
6 Map visualisation [i](#)

This section contains visualisations of the EMDB entry EMD-19401. These allow visual inspection of the internal detail of the map and identification of artifacts.

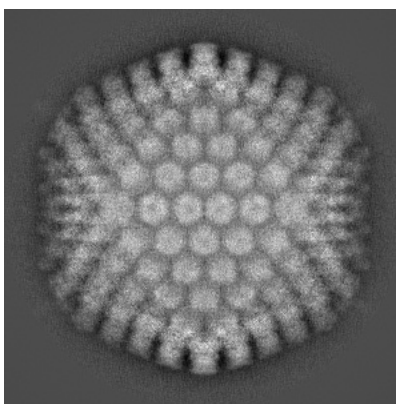
Images derived from a raw map, generated by summing the deposited half-maps, are presented below the corresponding image components of the primary map to allow further visual inspection and comparison with those of the primary map.

6.1 Orthogonal projections [i](#)

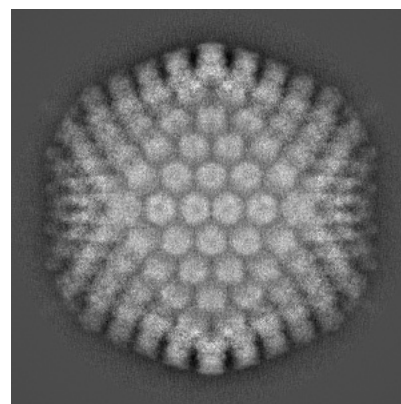
6.1.1 Primary map



X

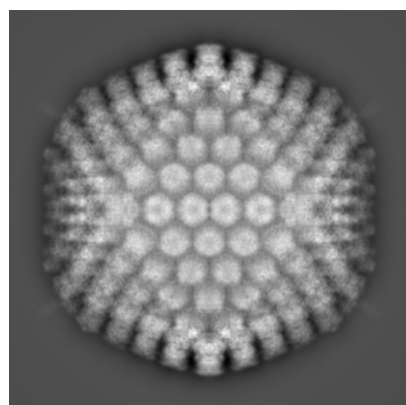


Y

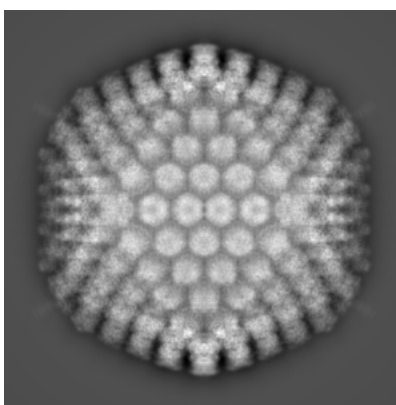


Z

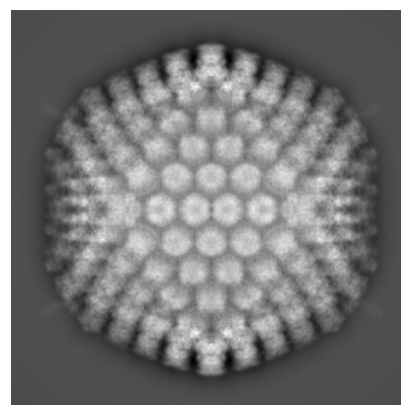
6.1.2 Raw map



X



Y

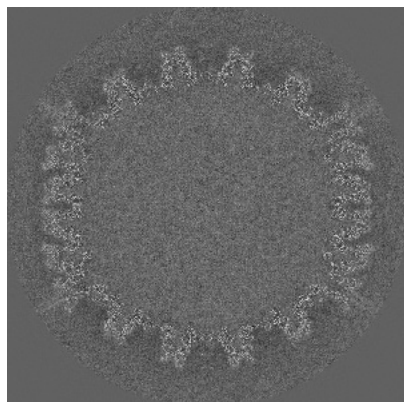


Z

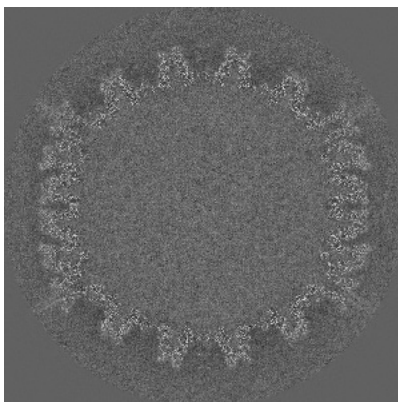
The images above show the map projected in three orthogonal directions.

6.2 Central slices [i](#)

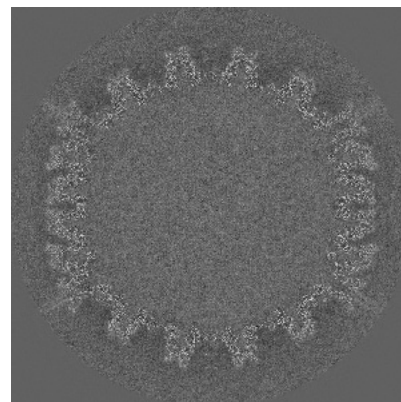
6.2.1 Primary map



X Index: 379

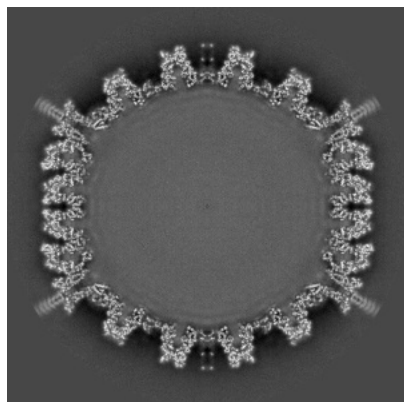


Y Index: 379

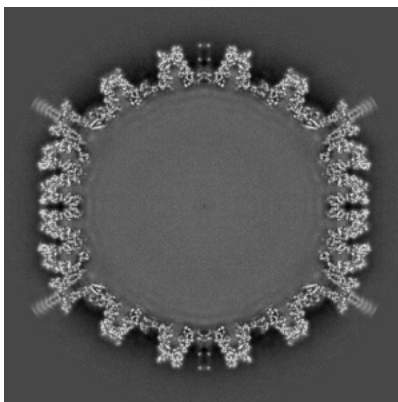


Z Index: 379

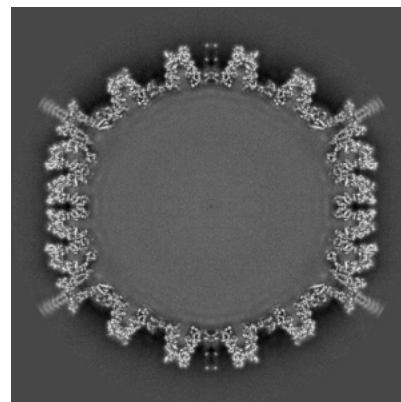
6.2.2 Raw map



X Index: 379



Y Index: 379

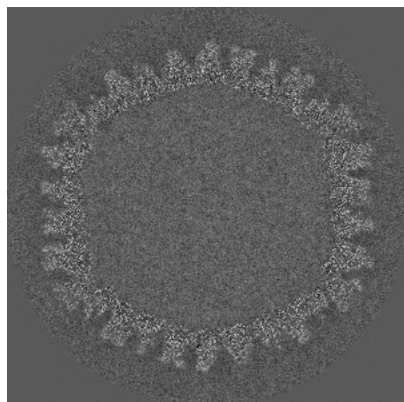


Z Index: 379

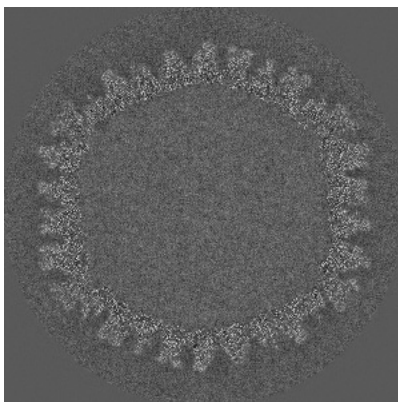
The images above show central slices of the map in three orthogonal directions.

6.3 Largest variance slices [i](#)

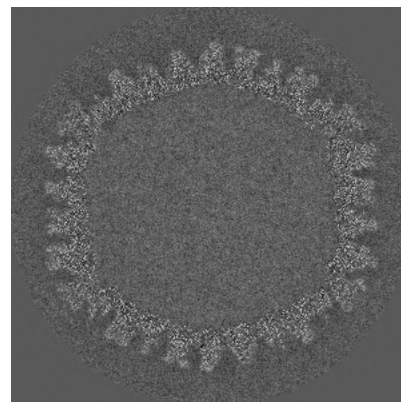
6.3.1 Primary map



X Index: 366

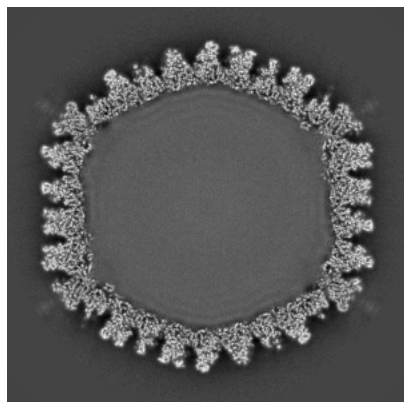


Y Index: 366

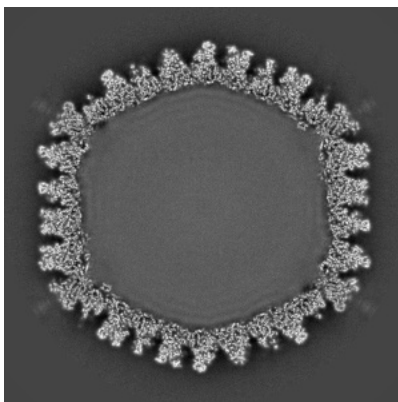


Z Index: 366

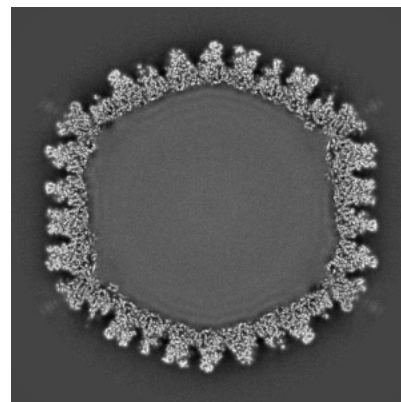
6.3.2 Raw map



X Index: 366



Y Index: 366

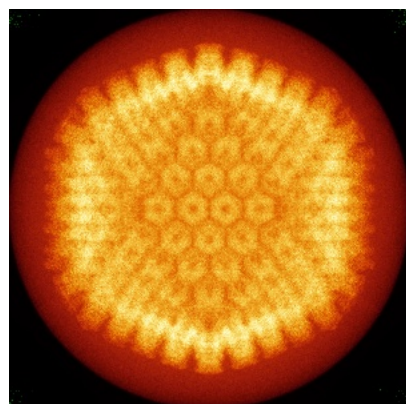


Z Index: 366

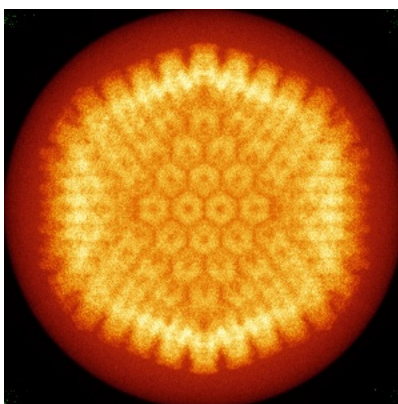
The images above show the largest variance slices of the map in three orthogonal directions.

6.4 Orthogonal standard-deviation projections (False-color) [i](#)

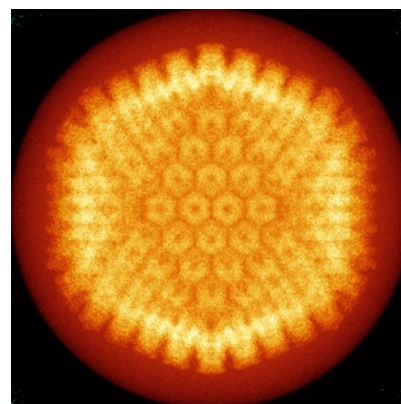
6.4.1 Primary map



X

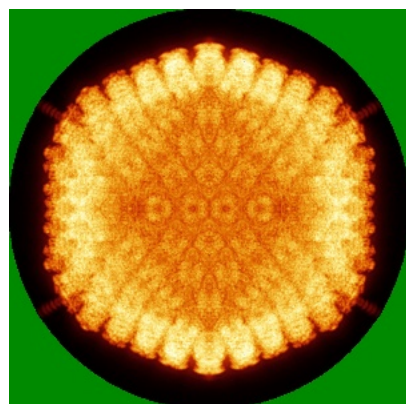


Y

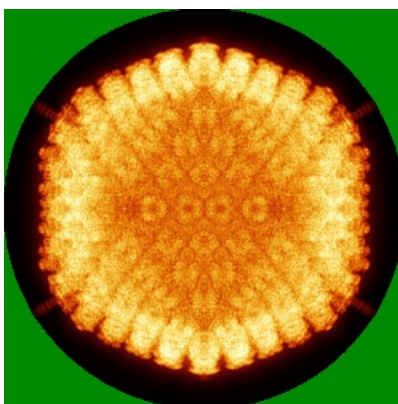


Z

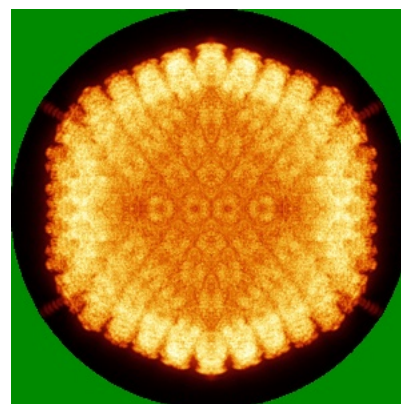
6.4.2 Raw map



X



Y



Z

The images above show the map standard deviation projections with false color in three orthogonal directions. Minimum values are shown in green, max in blue, and dark to light orange shades represent small to large values respectively.

6.5 Orthogonal surface views [i](#)

6.5.1 Primary map



X



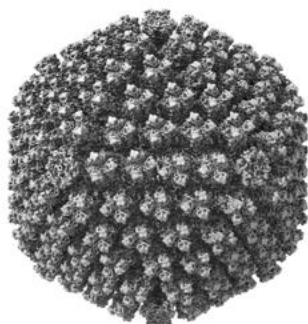
Y



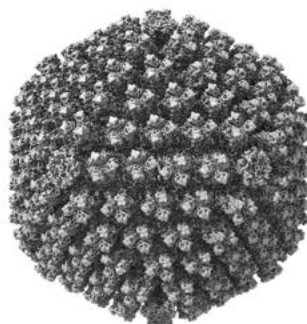
Z

The images above show the 3D surface view of the map at the recommended contour level 0.04. These images, in conjunction with the slice images, may facilitate assessment of whether an appropriate contour level has been provided.

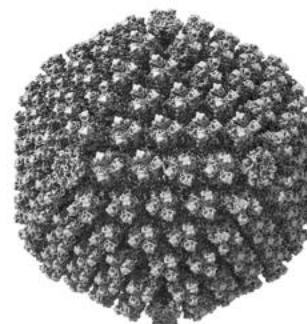
6.5.2 Raw map



X



Y



Z

These images show the 3D surface of the raw map. The raw map's contour level was selected so that its surface encloses the same volume as the primary map does at its recommended contour level.

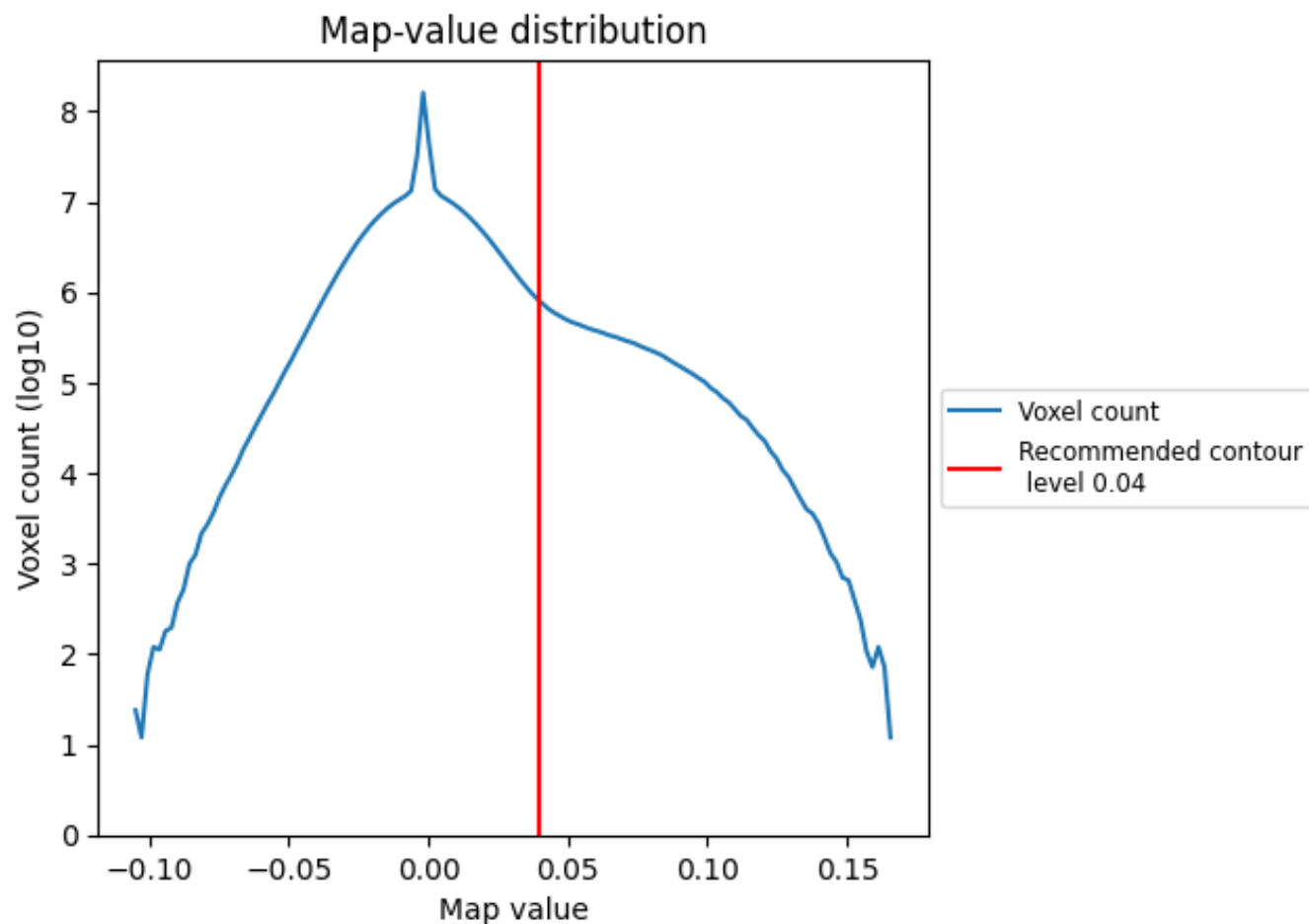
6.6 Mask visualisation [i](#)

This section was not generated. No masks/segmentation were deposited.

7 Map analysis [i](#)

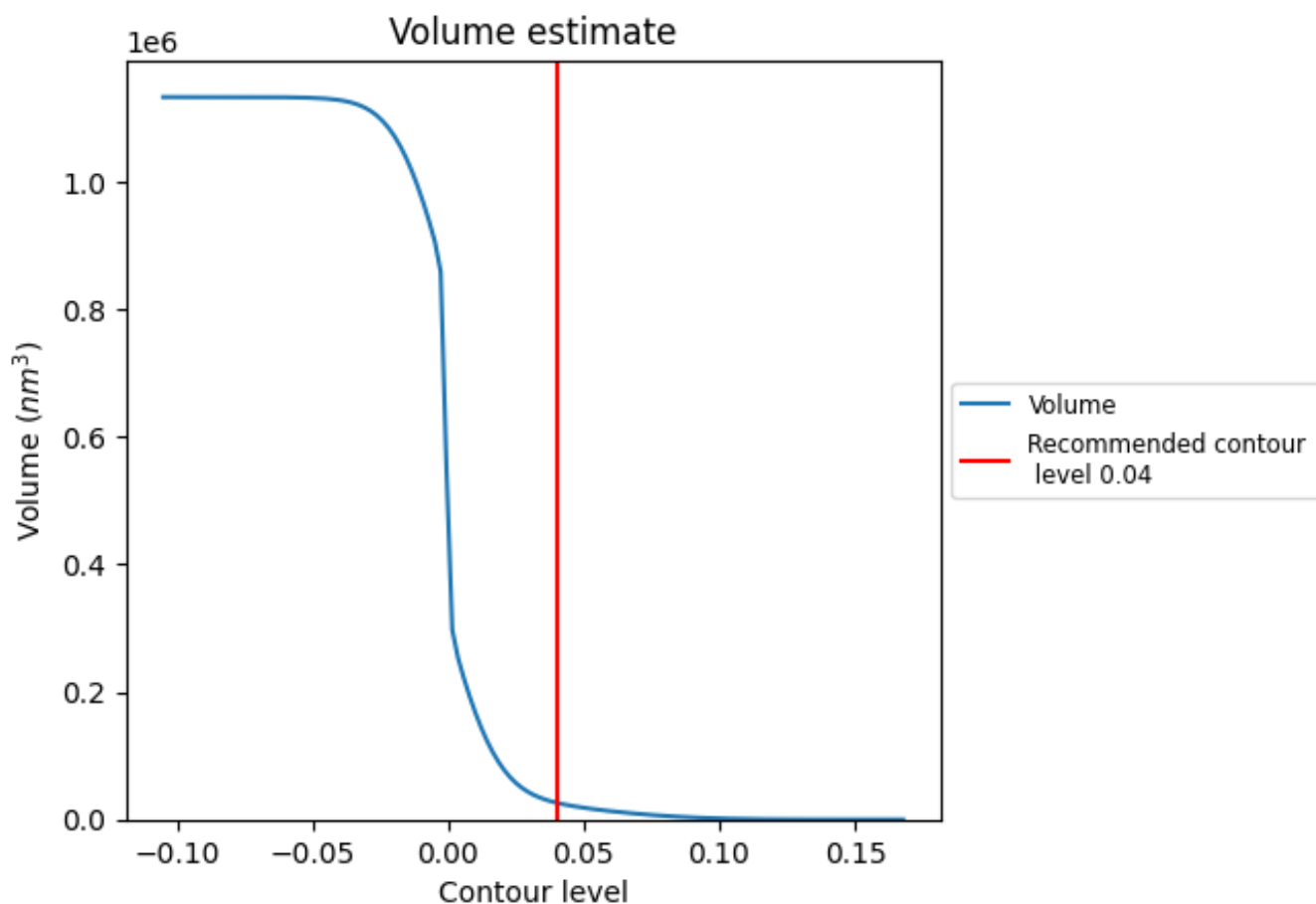
This section contains the results of statistical analysis of the map.

7.1 Map-value distribution [i](#)



The map-value distribution is plotted in 128 intervals along the x-axis. The y-axis is logarithmic. A spike in this graph at zero usually indicates that the volume has been masked.

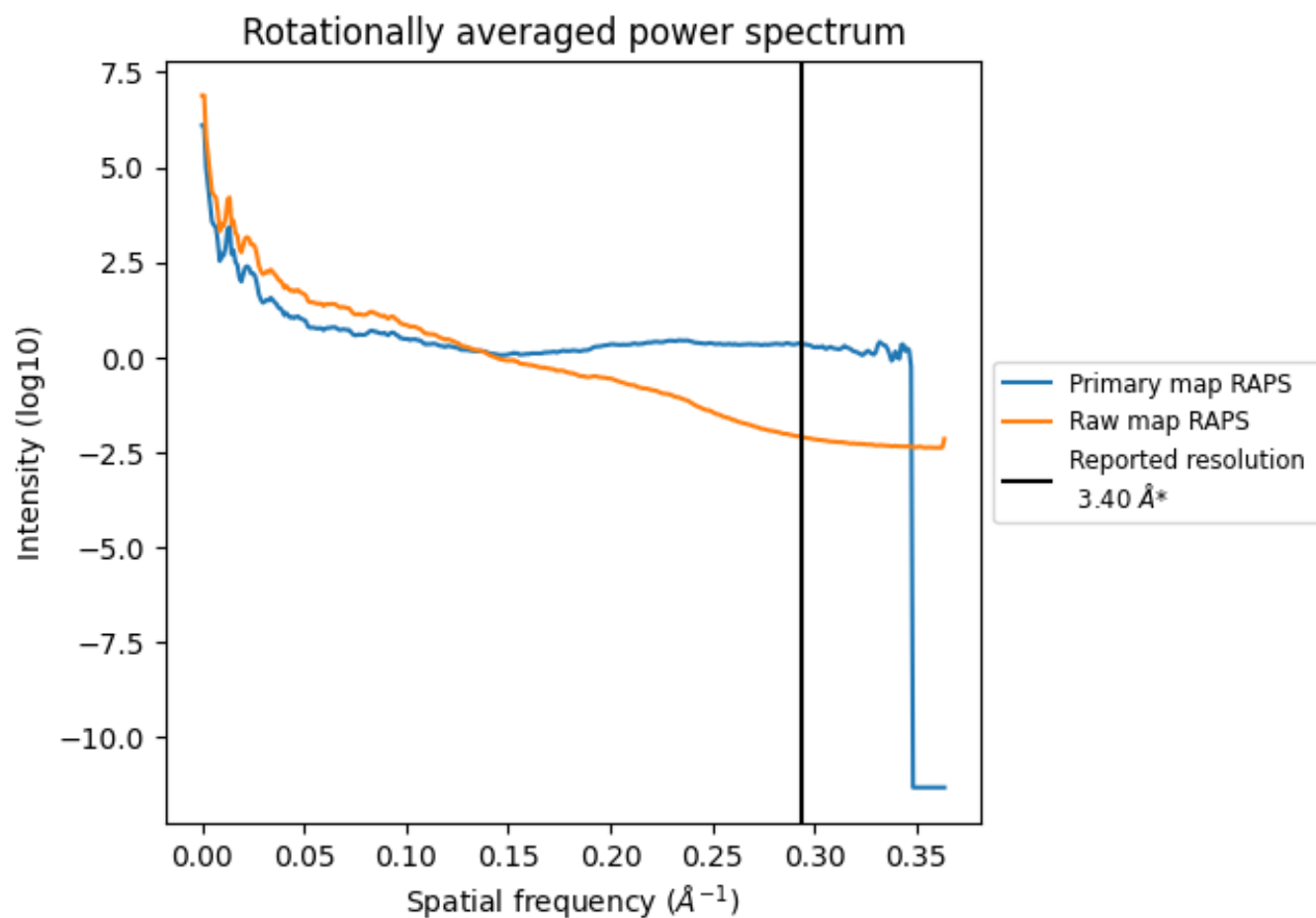
7.2 Volume estimate [i](#)



The volume at the recommended contour level is 26241 nm³; this corresponds to an approximate mass of 23705 kDa.

The volume estimate graph shows how the enclosed volume varies with the contour level. The recommended contour level is shown as a vertical line and the intersection between the line and the curve gives the volume of the enclosed surface at the given level.

7.3 Rotationally averaged power spectrum ⓘ

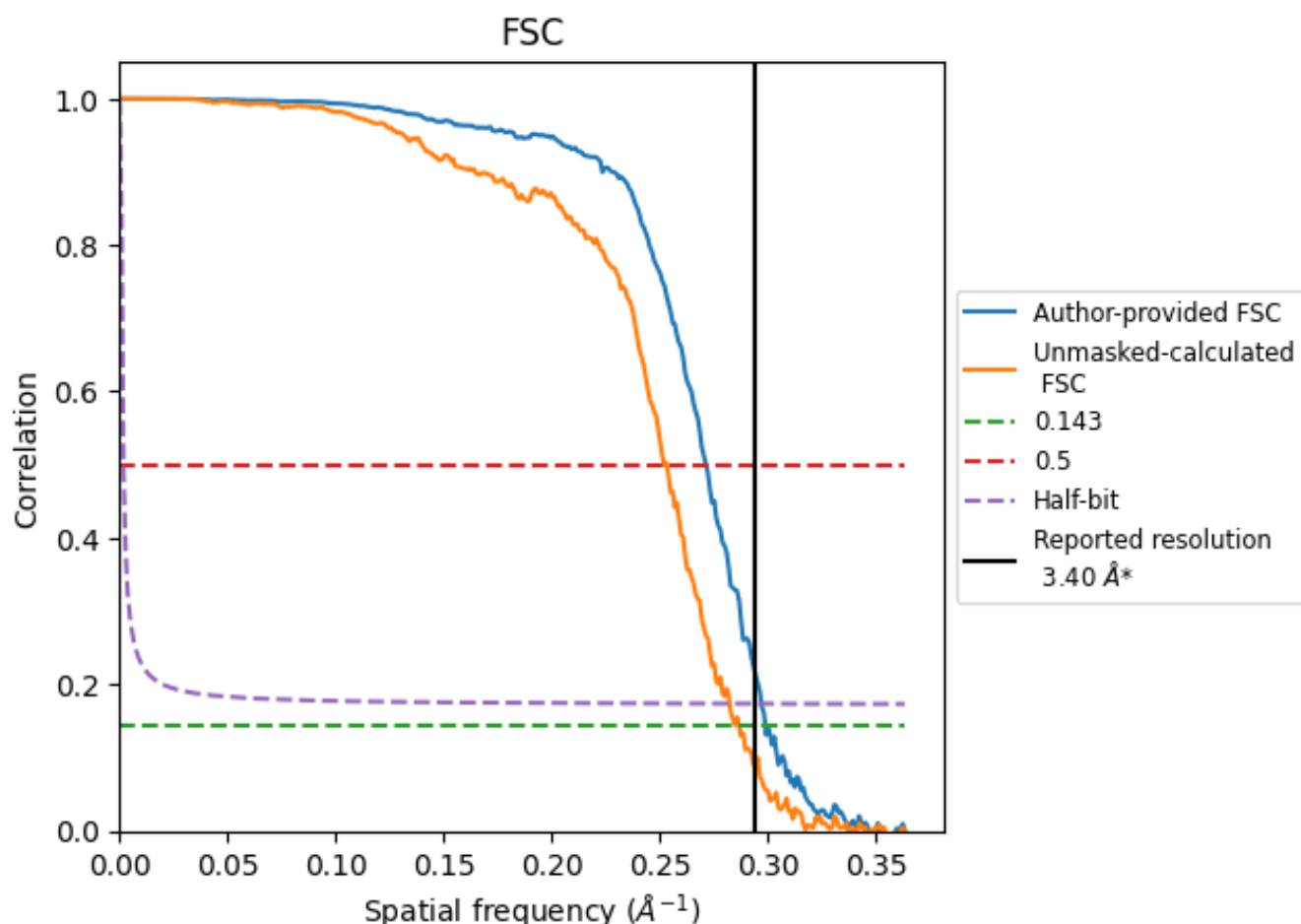


*Reported resolution corresponds to spatial frequency of 0.294 Å⁻¹

8 Fourier-Shell correlation [i](#)

Fourier-Shell Correlation (FSC) is the most commonly used method to estimate the resolution of single-particle and subtomogram-averaged maps. The shape of the curve depends on the imposed symmetry, mask and whether or not the two 3D reconstructions used were processed from a common reference. The reported resolution is shown as a black line. A curve is displayed for the half-bit criterion in addition to lines showing the 0.143 gold standard cut-off and 0.5 cut-off.

8.1 FSC [i](#)



*Reported resolution corresponds to spatial frequency of 0.294 \AA^{-1}

8.2 Resolution estimates [i](#)

Resolution estimate (Å)	Estimation criterion (FSC cut-off)		
	0.143	0.5	Half-bit
Reported by author	3.40	-	-
Author-provided FSC curve	3.34	3.68	3.36
Unmasked-calculated*	3.49	3.96	3.54

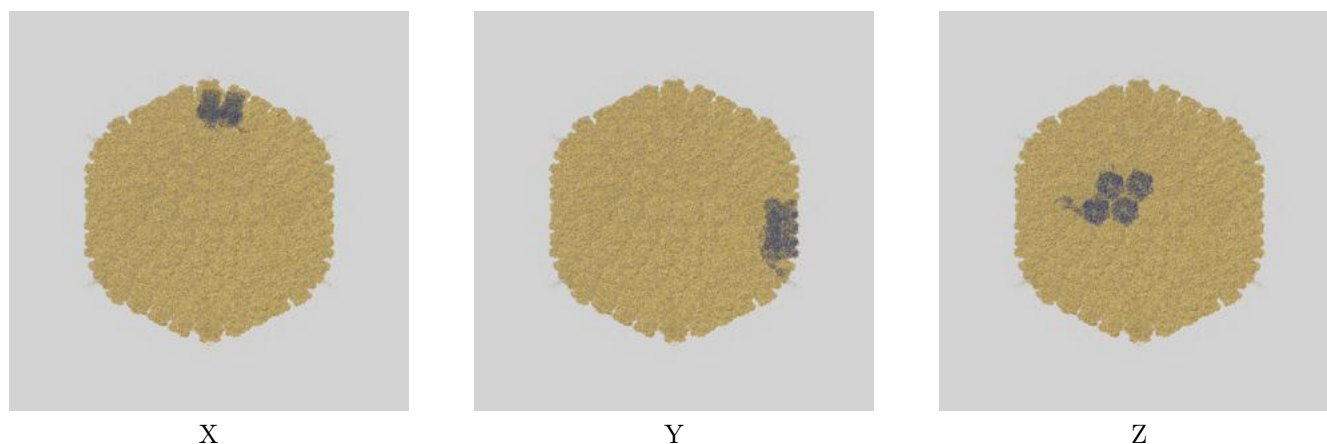
*Resolution estimate based on FSC curve calculated by comparison of deposited half-maps.

9 Map-model fit [i](#)

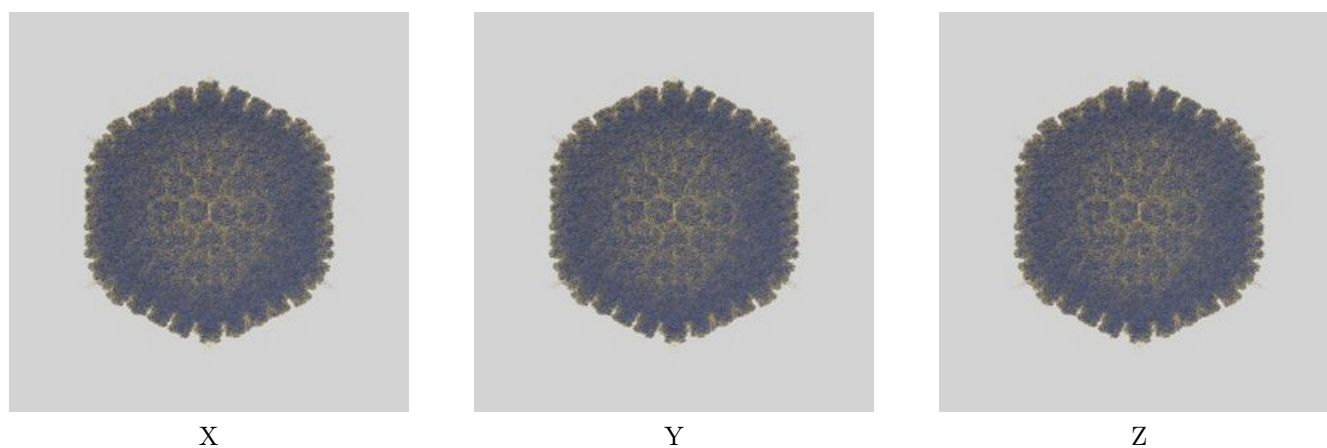
This section contains information regarding the fit between EMDB map EMD-19401 and PDB model 8ROQ. Per-residue inclusion information can be found in section [3](#) on page [6](#).

9.1 Map-model overlays

9.1.1 Map-model overlay [i](#)



9.1.2 Map-model assembly overlay [i](#)



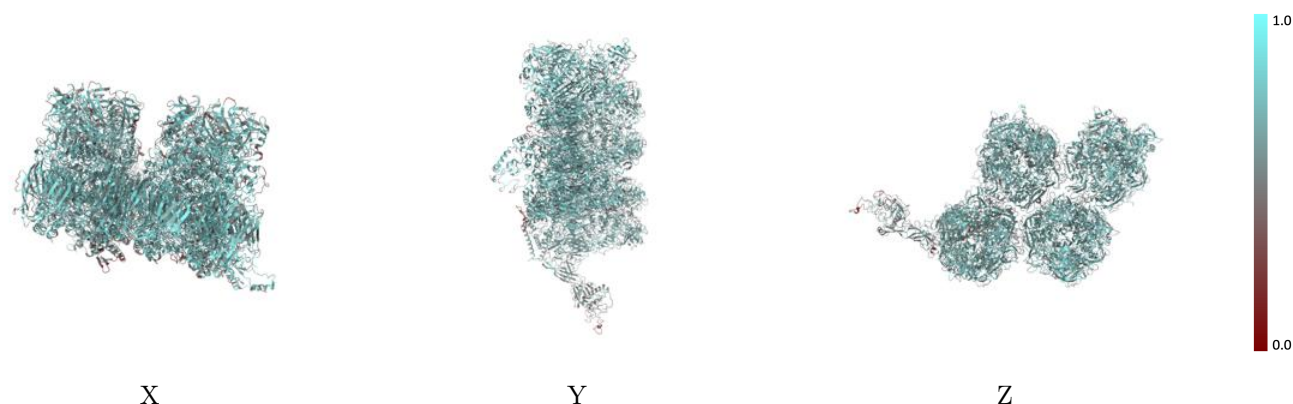
The images above show the 3D surface view of the map at the recommended contour level 0.04 at 50% transparency in yellow overlaid with a ribbon representation of the model coloured in blue. These images allow for the visual assessment of the quality of fit between the atomic model and the map.

9.2 Q-score mapped to coordinate model [i](#)



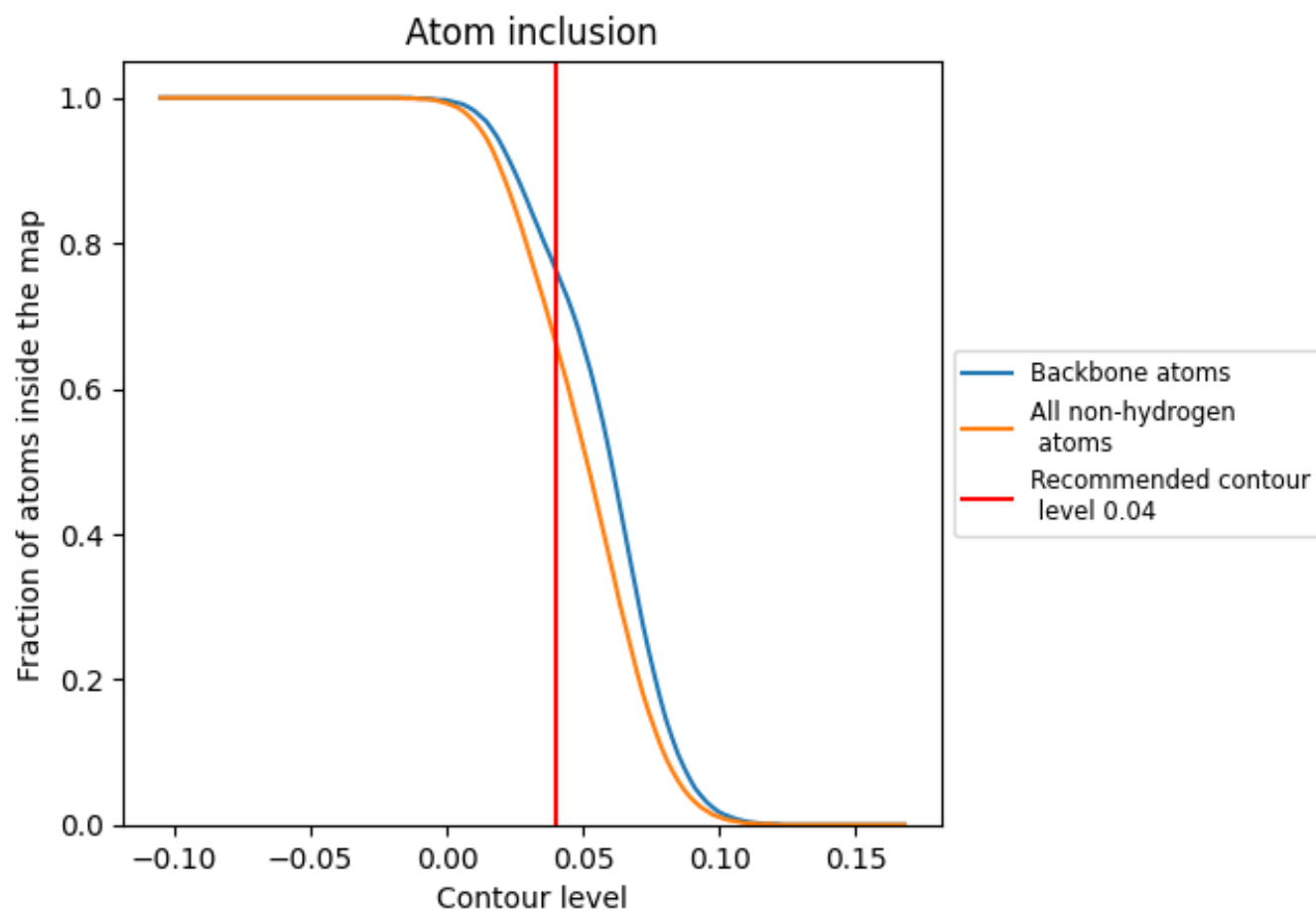
The images above show the model with each residue coloured according to its Q-score. This shows their resolvability in the map with higher Q-score values reflecting better resolvability. Please note: Q-score is calculating the resolvability of atoms, and thus high values are only expected at resolutions at which atoms can be resolved. Low Q-score values may therefore be expected for many entries.

9.3 Atom inclusion mapped to coordinate model [i](#)



The images above show the model with each residue coloured according to its atom inclusion. This shows to what extent they are inside the map at the recommended contour level (0.04).

9.4 Atom inclusion [i](#)



At the recommended contour level, 76% of all backbone atoms, 66% of all non-hydrogen atoms, are inside the map.

9.5 Map-model fit summary ⓘ

The table lists the average atom inclusion at the recommended contour level (0.04) and Q-score for the entire model and for each chain.

Chain	Atom inclusion	Q-score
All	<div><div></div></div> 0.6620	<div><div></div></div> 0.5220
A	<div><div></div></div> 0.6640	<div><div></div></div> 0.5250
B	<div><div></div></div> 0.6400	<div><div></div></div> 0.5110
C	<div><div></div></div> 0.6550	<div><div></div></div> 0.5150
D	<div><div></div></div> 0.6730	<div><div></div></div> 0.5290
E	<div><div></div></div> 0.6770	<div><div></div></div> 0.5240
F	<div><div></div></div> 0.6770	<div><div></div></div> 0.5220
G	<div><div></div></div> 0.6810	<div><div></div></div> 0.5270
H	<div><div></div></div> 0.6860	<div><div></div></div> 0.5300
I	<div><div></div></div> 0.6890	<div><div></div></div> 0.5310
J	<div><div></div></div> 0.6740	<div><div></div></div> 0.5240
K	<div><div></div></div> 0.6760	<div><div></div></div> 0.5220
L	<div><div></div></div> 0.6720	<div><div></div></div> 0.5280
M	<div><div></div></div> 0.5190	<div><div></div></div> 0.4890
N	<div><div></div></div> 0.5550	<div><div></div></div> 0.5030
O	<div><div></div></div> 0.6100	<div><div></div></div> 0.5210
P	<div><div></div></div> 0.5990	<div><div></div></div> 0.4980

1.0

0.0

<0.0