



# wwPDB X-ray Structure Validation Summary Report ⓘ

Dec 2, 2024 – 10:02 AM EST

PDB ID : 1RIO  
Title : Structure of bacteriophage lambda cI-NTD in complex with sigma-region4 of Thermus aquaticus bound to DNA  
Authors : Jain, D.; Nickels, B.E.; Sun, L.; Hochschild, A.; Darst, S.A.  
Deposited on : 2003-11-17  
Resolution : 2.30 Å(reported)

This is a wwPDB X-ray Structure Validation Summary Report for a publicly released PDB entry.

We welcome your comments at [validation@mail.wwpdb.org](mailto:validation@mail.wwpdb.org)

A user guide is available at

<https://www.wwpdb.org/validation/2017/XrayValidationReportHelp>

with specific help available everywhere you see the ⓘ symbol.

The types of validation reports are described at

<http://www.wwpdb.org/validation/2017/FAQs#types>.

---

The following versions of software and data (see [references ⓘ](#)) were used in the production of this report:

MolProbity	:	4.02b-467
Mogul	:	2022.3.0, CSD as543be (2022)
Xtriage (Phenix)	:	1.21
EDS	:	3.0
Percentile statistics	:	20231227.v01 (using entries in the PDB archive December 27th 2023)
CCP4	:	9.0.004 (Gargrove)
Density-Fitness	:	1.0.11
Ideal geometry (proteins)	:	Engh & Huber (2001)
Ideal geometry (DNA, RNA)	:	Parkinson et al. (1996)
Validation Pipeline (wwPDB-VP)	:	2.40

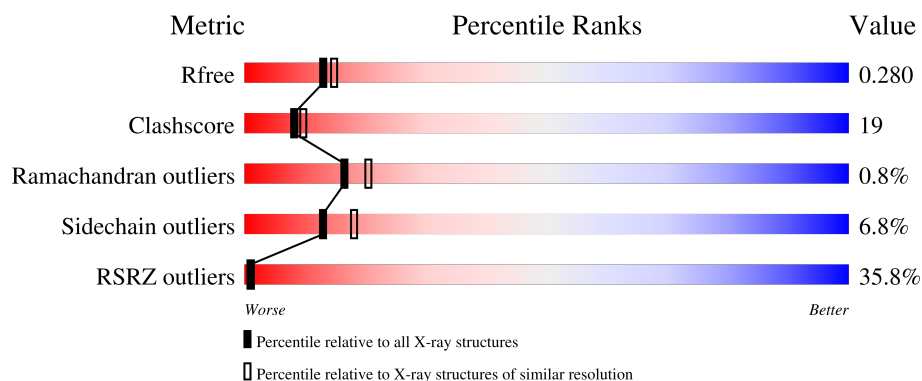
# 1 Overall quality at a glance

The following experimental techniques were used to determine the structure:

*X-RAY DIFFRACTION*

The reported resolution of this entry is 2.30 Å.

Percentile scores (ranging between 0-100) for global validation metrics of the entry are shown in the following graphic. The table shows the number of entries on which the scores are based.



Metric	Whole archive (#Entries)	Similar resolution (#Entries, resolution range(Å))
$R_{free}$	164625	5963 (2.30-2.30)
Clashscore	180529	6698 (2.30-2.30)
Ramachandran outliers	177936	6640 (2.30-2.30)
Sidechain outliers	177891	6640 (2.30-2.30)
RSRZ outliers	164620	5963 (2.30-2.30)

The table below summarises the geometric issues observed across the polymeric chains and their fit to the electron density. The red, orange, yellow and green segments of the lower bar indicate the fraction of residues that contain outliers for  $\geq 3$ , 2, 1 and 0 types of geometric quality criteria respectively. A grey segment represents the fraction of residues that are not modelled. The numeric value for each fraction is indicated below the corresponding segment, with a dot representing fractions  $\leq 5\%$ .

Mol	Chain	Length	Quality of chain
1	U	27	
2	T	27	
3	H	73	
4	A	98	
4	B	98	

## 2 Entry composition

There are 7 unique types of molecules in this entry. The entry contains 3286 atoms, of which 0 are hydrogens and 0 are deuteriums.

In the tables below, the ZeroOcc column contains the number of atoms modelled with zero occupancy, the AltConf column contains the number of residues with at least one atom in alternate conformation and the Trace column contains the number of residues modelled with at most 2 atoms.

- Molecule 1 is a DNA chain called 27-MER.

Mol	Chain	Residues	Atoms					ZeroOcc	AltConf	Trace
1	U	27	Total	C	N	O	P	0	0	0
			550	262	101	161	26			

- Molecule 2 is a DNA chain called 27-MER.

Mol	Chain	Residues	Atoms					ZeroOcc	AltConf	Trace
2	T	27	Total	C	N	O	P	0	0	0
			551	262	104	159	26			

- Molecule 3 is a protein called sigma factor SigA.

Mol	Chain	Residues	Atoms					ZeroOcc	AltConf	Trace
3	H	61	Total	C	N	O	S	16	0	0
			483	303	93	86	1			

- Molecule 4 is a protein called Repressor protein CI.

Mol	Chain	Residues	Atoms					ZeroOcc	AltConf	Trace
4	A	97	Total	C	N	O	Se	0	0	0
			764	480	137	144	3			
4	B	96	Total	C	N	O	Se	0	0	0
			753	474	134	142	3			

There are 18 discrepancies between the modelled and reference sequences:

Chain	Residue	Modelled	Actual	Comment	Reference
A	41	MSE	MET	modified residue	UNP P03034
A	43	MSE	MET	modified residue	UNP P03034
A	88	MSE	MET	modified residue	UNP P03034
A	93	HIS	-	expression tag	UNP P03034
A	94	HIS	-	expression tag	UNP P03034
A	95	HIS	-	expression tag	UNP P03034

*Continued on next page...*

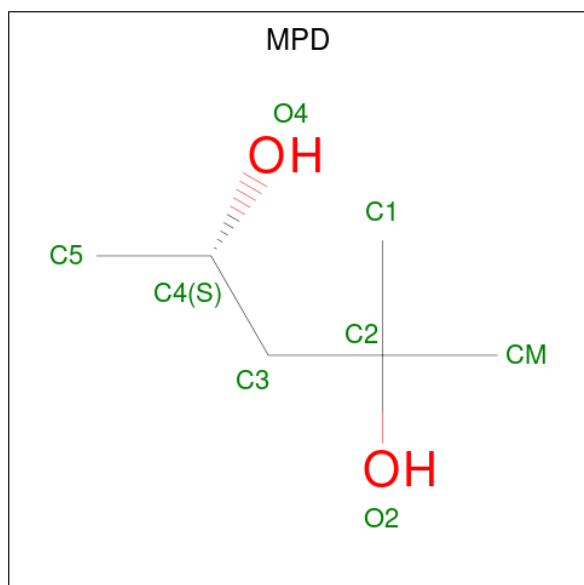
Continued from previous page...

Chain	Residue	Modelled	Actual	Comment	Reference
A	96	HIS	-	expression tag	UNP P03034
A	97	HIS	-	expression tag	UNP P03034
A	98	HIS	-	expression tag	UNP P03034
B	41	MSE	MET	modified residue	UNP P03034
B	43	MSE	MET	modified residue	UNP P03034
B	88	MSE	MET	modified residue	UNP P03034
B	93	HIS	-	expression tag	UNP P03034
B	94	HIS	-	expression tag	UNP P03034
B	95	HIS	-	expression tag	UNP P03034
B	96	HIS	-	expression tag	UNP P03034
B	97	HIS	-	expression tag	UNP P03034
B	98	HIS	-	expression tag	UNP P03034

- Molecule 5 is CALCIUM ION (three-letter code: CA) (formula: Ca).

Mol	Chain	Residues	Atoms	ZeroOcc	AltConf
5	A	1	Total Ca 1 1	0	0

- Molecule 6 is (4S)-2-METHYL-2,4-PENTANEDIOL (three-letter code: MPD) (formula: C<sub>6</sub>H<sub>14</sub>O<sub>2</sub>).



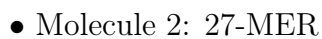
Mol	Chain	Residues	Atoms	ZeroOcc	AltConf
6	A	1	Total C O 8 6 2	0	0

- Molecule 7 is water.

Mol	Chain	Residues	Atoms		ZeroOcc	AltConf
7	U	36	Total 36	O 36	0	0
7	T	32	Total 32	O 32	0	0
7	H	15	Total 15	O 15	0	0
7	A	49	Total 49	O 49	0	0
7	B	44	Total 44	O 44	0	0



- Molecule 1: 27-MER.



## 4 Data and refinement statistics

Property	Value	Source
Space group	P 1 21 1	Depositor
Cell constants a, b, c, $\alpha$ , $\beta$ , $\gamma$	47.26Å 71.27Å 77.20Å 90.00° 91.34° 90.00°	Depositor
Resolution (Å)	30.00 – 2.30 30.00 – 2.30	Depositor EDS
% Data completeness (in resolution range)	100.0 (30.00-2.30) 99.8 (30.00-2.30)	Depositor EDS
$R_{merge}$	(Not available)	Depositor
$R_{sym}$	(Not available)	Depositor
$\langle I/\sigma(I) \rangle$ <sup>1</sup>	2.06 (at 2.24Å)	Xtriage
Refinement program	REFMAC 5.0	Depositor
R, $R_{free}$	0.216 , 0.254 0.246 , 0.280	Depositor DCC
$R_{free}$ test set	1095 reflections (4.79%)	wwPDB-VP
Wilson B-factor (Å <sup>2</sup> )	37.2	Xtriage
Anisotropy	0.319	Xtriage
Bulk solvent $k_{sol}$ (e/Å <sup>3</sup> ), $B_{sol}$ (Å <sup>2</sup> )	0.30 , 40.8	EDS
L-test for twinning <sup>2</sup>	$\langle  L  \rangle = 0.49$ , $\langle L^2 \rangle = 0.33$	Xtriage
Estimated twinning fraction	0.033 for h,-k,-l	Xtriage
$F_o, F_c$ correlation	0.88	EDS
Total number of atoms	3286	wwPDB-VP
Average B, all atoms (Å <sup>2</sup> )	30.0	wwPDB-VP

Xtriage's analysis on translational NCS is as follows: *The largest off-origin peak in the Patterson function is 7.59% of the height of the origin peak. No significant pseudotranslation is detected.*

<sup>1</sup>Intensities estimated from amplitudes.

<sup>2</sup>Theoretical values of  $\langle |L| \rangle$ ,  $\langle L^2 \rangle$  for acentric reflections are 0.5, 0.333 respectively for untwinned datasets, and 0.375, 0.2 for perfectly twinned datasets.

## 5 Model quality ⓘ

### 5.1 Standard geometry ⓘ

Bond lengths and bond angles in the following residue types are not validated in this section: MPD, CA

The Z score for a bond length (or angle) is the number of standard deviations the observed value is removed from the expected value. A bond length (or angle) with  $|Z| > 5$  is considered an outlier worth inspection. RMSZ is the root-mean-square of all Z scores of the bond lengths (or angles).

Mol	Chain	Bond lengths		Bond angles	
		RMSZ	# $ Z  > 5$	RMSZ	# $ Z  > 5$
1	U	1.62	4/616 (0.6%)	2.61	56/949 (5.9%)
2	T	1.66	3/618 (0.5%)	2.47	50/952 (5.3%)
3	H	0.82	0/487	1.09	4/649 (0.6%)
4	A	0.92	0/774	1.00	4/1031 (0.4%)
4	B	0.98	1/762 (0.1%)	0.94	3/1016 (0.3%)
All	All	1.24	8/3257 (0.2%)	1.81	117/4597 (2.5%)

Chiral center outliers are detected by calculating the chiral volume of a chiral center and verifying if the center is modelled as a planar moiety or with the opposite hand. A planarity outlier is detected by checking planarity of atoms in a peptide group, atoms in a mainchain group or atoms of a sidechain that are expected to be planar.

Mol	Chain	#Chirality outliers	#Planarity outliers
3	H	0	2

The worst 5 of 8 bond length outliers are listed below:

Mol	Chain	Res	Type	Atoms	Z	Observed(Å)	Ideal(Å)
1	U	14	DA	N3-C4	-7.37	1.30	1.34
2	T	8	DA	C3'-O3'	-7.19	1.34	1.44
2	T	22	DA	N7-C5	-7.04	1.35	1.39
2	T	12	DA	C8-N7	-6.88	1.26	1.31
4	B	43	MSE	SE-CE	-6.21	1.58	1.95

The worst 5 of 117 bond angle outliers are listed below:

Mol	Chain	Res	Type	Atoms	Z	Observed(°)	Ideal(°)
1	U	8	DA	O4'-C1'-N9	15.98	119.18	108.00
1	U	9	DC	O4'-C1'-N1	12.90	117.03	108.00
1	U	6	DT	O4'-C1'-N1	12.71	116.89	108.00

*Continued on next page...*



*Continued from previous page...*

Mol	Chain	Res	Type	Atoms	Z	Observed(°)	Ideal(°)
2	T	17	DC	O4'-C1'-N1	-12.43	99.30	108.00
1	U	11	DG	O4'-C1'-N9	-11.50	99.95	108.00

There are no chirality outliers.

All (2) planarity outliers are listed below:

Mol	Chain	Res	Type	Group
3	H	368	GLU	Mainchain,Peptide

## 5.2 Too-close contacts [i](#)

In the following table, the Non-H and H(model) columns list the number of non-hydrogen atoms and hydrogen atoms in the chain respectively. The H(added) column lists the number of hydrogen atoms added and optimized by MolProbity. The Clashes column lists the number of clashes within the asymmetric unit, whereas Symm-Clashes lists symmetry-related clashes.

Mol	Chain	Non-H	H(model)	H(added)	Clashes	Symm-Clashes
1	U	550	0	305	19	0
2	T	551	0	304	17	0
3	H	483	0	495	15	0
4	A	764	0	767	37	0
4	B	753	0	760	41	0
5	A	1	0	0	0	0
6	A	8	0	14	2	0
7	A	49	0	0	2	0
7	B	44	0	0	3	0
7	H	15	0	0	1	0
7	T	32	0	0	1	0
7	U	36	0	0	0	0
All	All	3286	0	2645	109	0

The all-atom clashscore is defined as the number of clashes found per 1000 atoms (including hydrogen atoms). The all-atom clashscore for this structure is 19.

The worst 5 of 109 close contacts within the same asymmetric unit are listed below, sorted by their clash magnitude.

Atom-1	Atom-2	Interatomic distance (Å)	Clash overlap (Å)
1:U:6:DT:C4'	1:U:6:DT:OP1	1.89	1.19
4:B:21:ALA:O	4:B:25:LYS:HD3	1.42	1.15

*Continued on next page...*

*Continued from previous page...*

Atom-1	Atom-2	Interatomic distance (Å)	Clash overlap (Å)
4:A:43:MSE:HE2	4:A:47:GLY:HA3	1.29	1.10
2:T:22:DA:OP1	2:T:22:DA:H4'	1.30	1.10
4:A:88:MSE:HE1	4:B:60:ALA:HB1	1.15	1.08

There are no symmetry-related clashes.

## 5.3 Torsion angles [i](#)

### 5.3.1 Protein backbone [i](#)

In the following table, the Percentiles column shows the percent Ramachandran outliers of the chain as a percentile score with respect to all X-ray entries followed by that with respect to entries of similar resolution.

The Analysed column shows the number of residues for which the backbone conformation was analysed, and the total number of residues.

Mol	Chain	Analysed	Favoured	Allowed	Outliers	Percentiles	
3	H	59/73 (81%)	55 (93%)	3 (5%)	1 (2%)	7	7
4	A	95/98 (97%)	94 (99%)	1 (1%)	0	100	100
4	B	94/98 (96%)	91 (97%)	2 (2%)	1 (1%)	12	13
All	All	248/269 (92%)	240 (97%)	6 (2%)	2 (1%)	16	20

All (2) Ramachandran outliers are listed below:

Mol	Chain	Res	Type
3	H	375	LYS
4	B	3	THR

### 5.3.2 Protein sidechains [i](#)

In the following table, the Percentiles column shows the percent sidechain outliers of the chain as a percentile score with respect to all X-ray entries followed by that with respect to entries of similar resolution.

The Analysed column shows the number of residues for which the sidechain conformation was analysed, and the total number of residues.

Mol	Chain	Analysed	Rotameric	Outliers	Percentiles	
3	H	48/65 (74%)	42 (88%)	6 (12%)	3	4
4	A	80/78 (103%)	75 (94%)	5 (6%)	15	21
4	B	79/78 (101%)	76 (96%)	3 (4%)	28	42
All	All	207/221 (94%)	193 (93%)	14 (7%)	13	18

5 of 14 residues with a non-rotameric sidechain are listed below:

Mol	Chain	Res	Type
4	A	28	ASN
4	A	35	GLU
4	B	96	HIS
4	B	65	LEU
4	B	87	GLU

Sometimes sidechains can be flipped to improve hydrogen bonding and reduce clashes. All (5) such sidechains are listed below:

Mol	Chain	Res	Type
3	H	417	ASN
4	A	95	HIS
4	A	96	HIS
4	A	97	HIS
4	B	94	HIS

### 5.3.3 RNA ⓘ

There are no RNA molecules in this entry.

## 5.4 Non-standard residues in protein, DNA, RNA chains ⓘ

There are no non-standard protein/DNA/RNA residues in this entry.

## 5.5 Carbohydrates ⓘ

There are no oligosaccharides in this entry.

## 5.6 Ligand geometry ⓘ

Of 2 ligands modelled in this entry, 1 is monoatomic - leaving 1 for Mogul analysis.

In the following table, the Counts columns list the number of bonds (or angles) for which Mogul statistics could be retrieved, the number of bonds (or angles) that are observed in the model and the number of bonds (or angles) that are defined in the Chemical Component Dictionary. The Link column lists molecule types, if any, to which the group is linked. The Z score for a bond length (or angle) is the number of standard deviations the observed value is removed from the expected value. A bond length (or angle) with  $|Z| > 2$  is considered an outlier worth inspection. RMSZ is the root-mean-square of all Z scores of the bond lengths (or angles).

Mol	Type	Chain	Res	Link	Bond lengths			Bond angles		
					Counts	RMSZ	$\# Z  > 2$	Counts	RMSZ	$\# Z  > 2$
6	MPD	A	201	-	7,7,7	0.82	0	9,10,10	0.84	0

In the following table, the Chirals column lists the number of chiral outliers, the number of chiral centers analysed, the number of these observed in the model and the number defined in the Chemical Component Dictionary. Similar counts are reported in the Torsion and Rings columns. '-' means no outliers of that kind were identified.

Mol	Type	Chain	Res	Link	Chirals	Torsions	Rings
6	MPD	A	201	-	-	4/5/5/5	-

There are no bond length outliers.

There are no bond angle outliers.

There are no chirality outliers.

All (4) torsion outliers are listed below:

Mol	Chain	Res	Type	Atoms
6	A	201	MPD	C1-C2-C3-C4
6	A	201	MPD	O2-C2-C3-C4
6	A	201	MPD	C2-C3-C4-O4
6	A	201	MPD	CM-C2-C3-C4

There are no ring outliers.

1 monomer is involved in 2 short contacts:

Mol	Chain	Res	Type	Clashes	Symm-Clashes
6	A	201	MPD	2	0

## 5.7 Other polymers ⓘ

There are no such residues in this entry.

## 5.8 Polymer linkage issues ⓘ

There are no chain breaks in this entry.

## 6 Fit of model and data ⓘ

### 6.1 Protein, DNA and RNA chains ⓘ

**Warning:** The R factor obtained from EDS is 0.3223, which does not match the depositor's R factor of 0.216. Please interpret the results in this section carefully.

In the following table, the column labelled '#RSRZ > 2' contains the number (and percentage) of RSRZ outliers, followed by percent RSRZ outliers for the chain as percentile scores relative to all X-ray entries and entries of similar resolution. The OWAB column contains the minimum, median, 95<sup>th</sup> percentile and maximum values of the occupancy-weighted average B-factor per residue. The column labelled 'Q < 0.9' lists the number of (and percentage) of residues with an average occupancy less than 0.9.

Mol	Chain	Analysed	<RSRZ>	#RSRZ>2	OWAB(Å <sup>2</sup> )	Q<0.9
1	U	27/27 (100%)	0.24	0 100 100	15, 25, 38, 51	0
2	T	27/27 (100%)	0.29	1 (3%) 45 47	18, 24, 35, 47	0
3	H	58/73 (79%)	0.53	7 (12%) 10 11	19, 27, 61, 71	0
4	A	94/98 (95%)	5.18	92 (97%) 0 0	23, 37, 53, 68	0
4	B	93/98 (94%)	0.32	7 (7%) 22 23	13, 19, 50, 68	0
All	All	299/323 (92%)	1.88	107 (35%) 1 1	13, 27, 55, 71	0

The worst 5 of 107 RSRZ outliers are listed below:

Mol	Chain	Res	Type	RSRZ
4	A	93	HIS	11.0
4	A	97	HIS	9.9
4	A	96	HIS	9.6
4	A	86	TYR	8.7
4	A	94	HIS	8.6

### 6.2 Non-standard residues in protein, DNA, RNA chains ⓘ

There are no non-standard protein/DNA/RNA residues in this entry.

### 6.3 Carbohydrates ⓘ

There are no monosaccharides in this entry.

## 6.4 Ligands [i](#)

In the following table, the Atoms column lists the number of modelled atoms in the group and the number defined in the chemical component dictionary. The B-factors column lists the minimum, median, 95<sup>th</sup> percentile and maximum values of B factors of atoms in the group. The column labelled 'Q< 0.9' lists the number of atoms with occupancy less than 0.9.

Mol	Type	Chain	Res	Atoms	RSCC	RSR	B-factors( $\text{\AA}^2$ )	Q<0.9
5	CA	A	301	1/1	0.80	0.10	71,71,71,71	0
6	MPD	A	201	8/8	0.87	0.12	30,36,41,42	0

## 6.5 Other polymers [i](#)

There are no such residues in this entry.