



Full wwPDB EM Validation Report ⓘ

Jul 28, 2025 – 10:28 am BST

PDB ID : 9R6P / pdb_00009r6p
EMDB ID : EMD-53680
Title : Porcine hemagglutinating encephalomyelitis virus (PHEV) Spike protein in the closed conformation bound to 9-O-Ac-Sia.
Authors : Fernandez, I.; Rey, F.A.
Deposited on : 2025-05-13
Resolution : 3.10 Å(reported)

This is a Full wwPDB EM Validation Report for a publicly released PDB entry.

We welcome your comments at validation@mail.wwpdb.org

A user guide is available at

<https://www.wwpdb.org/validation/2017/EMValidationReportHelp>
with specific help available everywhere you see the ⓘ symbol.

The types of validation reports are described at

<http://www.wwpdb.org/validation/2017/FAQs#types>.

The following versions of software and data (see [references ⓘ](#)) were used in the production of this report:

EMDB validation analysis : 0.0.1.dev126
Mogul : 1.8.4, CSD as541be (2020)
MolProbity : 4-5-2 with Phenix2.0rc1
buster-report : 1.1.7 (2018)
Percentile statistics : 20231227.v01 (using entries in the PDB archive December 27th 2023)
MapQ : 1.9.13
Ideal geometry (proteins) : Engh & Huber (2001)
Ideal geometry (DNA, RNA) : Parkinson et al. (1996)
Validation Pipeline (wwPDB-VP) : 2.45.1

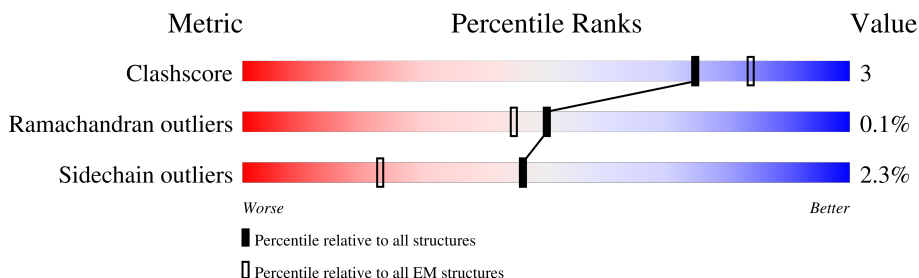
1 Overall quality at a glance

The following experimental techniques were used to determine the structure:

ELECTRON MICROSCOPY

The reported resolution of this entry is 3.10 Å.

Percentile scores (ranging between 0-100) for global validation metrics of the entry are shown in the following graphic. The table shows the number of entries on which the scores are based.



Metric	Whole archive (#Entries)	EM structures (#Entries)
Clashscore	210492	15764
Ramachandran outliers	207382	16835
Sidechain outliers	206894	16415

The table below summarises the geometric issues observed across the polymeric chains and their fit to the map. The red, orange, yellow and green segments of the bar indicate the fraction of residues that contain outliers for ≥ 3 , 2, 1 and 0 types of geometric quality criteria respectively. A grey segment represents the fraction of residues that are not modelled. The numeric value for each fraction is indicated below the corresponding segment, with a dot representing fractions $\leq 5\%$. The upper red bar (where present) indicates the fraction of residues that have poor fit to the EM map (all-atom inclusion $< 40\%$). The numeric value is given above the bar.

Mol	Chain	Length	Quality of chain
1	A	1333	
1	C	1333	
1	H	1333	
2	B	2	
2	D	2	
2	G	2	

2 Entry composition

There are 4 unique types of molecules in this entry. The entry contains 27448 atoms, of which 0 are hydrogens and 0 are deuteriums.

In the tables below, the AltConf column contains the number of residues with at least one atom in alternate conformation and the Trace column contains the number of residues modelled with at most 2 atoms.

- Molecule 1 is a protein called Spike glycoprotein.

Mol	Chain	Residues	Atoms					AltConf	Trace
1	A	1154	Total	C	N	O	S	0	0
			8957	5697	1474	1725	61		
1	C	1154	Total	C	N	O	S	0	0
			8957	5697	1474	1725	61		
1	H	1154	Total	C	N	O	S	0	0
			8958	5699	1474	1724	61		

There are 219 discrepancies between the modelled and reference sequences:

Chain	Residue	Modelled	Actual	Comment	Reference
A	1275	GLY	-	expression tag	UNP Q2QKN3
A	1276	SER	-	expression tag	UNP Q2QKN3
A	1277	GLY	-	expression tag	UNP Q2QKN3
A	1278	TYR	-	expression tag	UNP Q2QKN3
A	1279	ILE	-	expression tag	UNP Q2QKN3
A	1280	PRO	-	expression tag	UNP Q2QKN3
A	1281	GLU	-	expression tag	UNP Q2QKN3
A	1282	ALA	-	expression tag	UNP Q2QKN3
A	1283	PRO	-	expression tag	UNP Q2QKN3
A	1284	ARG	-	expression tag	UNP Q2QKN3
A	1285	ASP	-	expression tag	UNP Q2QKN3
A	1286	GLY	-	expression tag	UNP Q2QKN3
A	1287	GLN	-	expression tag	UNP Q2QKN3
A	1288	ALA	-	expression tag	UNP Q2QKN3
A	1289	TYR	-	expression tag	UNP Q2QKN3
A	1290	VAL	-	expression tag	UNP Q2QKN3
A	1291	ARG	-	expression tag	UNP Q2QKN3
A	1292	LYS	-	expression tag	UNP Q2QKN3
A	1293	ASP	-	expression tag	UNP Q2QKN3
A	1294	GLY	-	expression tag	UNP Q2QKN3
A	1295	GLU	-	expression tag	UNP Q2QKN3
A	1296	TRP	-	expression tag	UNP Q2QKN3
A	1297	VAL	-	expression tag	UNP Q2QKN3
A	1298	LEU	-	expression tag	UNP Q2QKN3

Continued on next page...

Continued from previous page...

Chain	Residue	Modelled	Actual	Comment	Reference
A	1299	LEU	-	expression tag	UNP Q2QKN3
A	1300	SER	-	expression tag	UNP Q2QKN3
A	1301	THR	-	expression tag	UNP Q2QKN3
A	1302	PHE	-	expression tag	UNP Q2QKN3
A	1303	LEU	-	expression tag	UNP Q2QKN3
A	1304	GLY	-	expression tag	UNP Q2QKN3
A	1305	SER	-	expression tag	UNP Q2QKN3
A	1306	LEU	-	expression tag	UNP Q2QKN3
A	1307	VAL	-	expression tag	UNP Q2QKN3
A	1308	PRO	-	expression tag	UNP Q2QKN3
A	1309	ARG	-	expression tag	UNP Q2QKN3
A	1310	GLY	-	expression tag	UNP Q2QKN3
A	1311	SER	-	expression tag	UNP Q2QKN3
A	1312	HIS	-	expression tag	UNP Q2QKN3
A	1313	HIS	-	expression tag	UNP Q2QKN3
A	1314	HIS	-	expression tag	UNP Q2QKN3
A	1315	HIS	-	expression tag	UNP Q2QKN3
A	1316	HIS	-	expression tag	UNP Q2QKN3
A	1317	HIS	-	expression tag	UNP Q2QKN3
A	1318	HIS	-	expression tag	UNP Q2QKN3
A	1319	HIS	-	expression tag	UNP Q2QKN3
A	1320	SER	-	expression tag	UNP Q2QKN3
A	1321	ALA	-	expression tag	UNP Q2QKN3
A	1322	TRP	-	expression tag	UNP Q2QKN3
A	1323	SER	-	expression tag	UNP Q2QKN3
A	1324	HIS	-	expression tag	UNP Q2QKN3
A	1325	PRO	-	expression tag	UNP Q2QKN3
A	1326	GLN	-	expression tag	UNP Q2QKN3
A	1327	PHE	-	expression tag	UNP Q2QKN3
A	1328	GLU	-	expression tag	UNP Q2QKN3
A	1329	LYS	-	expression tag	UNP Q2QKN3
A	1330	GLY	-	expression tag	UNP Q2QKN3
A	1331	THR	-	expression tag	UNP Q2QKN3
A	1332	GLY	-	expression tag	UNP Q2QKN3
A	1333	GLY	-	expression tag	UNP Q2QKN3
A	1334	LEU	-	expression tag	UNP Q2QKN3
A	1335	ASN	-	expression tag	UNP Q2QKN3
A	1336	ASP	-	expression tag	UNP Q2QKN3
A	1337	ILE	-	expression tag	UNP Q2QKN3
A	1338	PHE	-	expression tag	UNP Q2QKN3
A	1339	GLU	-	expression tag	UNP Q2QKN3
A	1340	ALA	-	expression tag	UNP Q2QKN3

Continued on next page...

Continued from previous page...

Chain	Residue	Modelled	Actual	Comment	Reference
A	1341	GLN	-	expression tag	UNP Q2QKN3
A	1342	LYS	-	expression tag	UNP Q2QKN3
A	1343	ILE	-	expression tag	UNP Q2QKN3
A	1344	GLU	-	expression tag	UNP Q2QKN3
A	1345	TRP	-	expression tag	UNP Q2QKN3
A	1346	HIS	-	expression tag	UNP Q2QKN3
A	1347	GLU	-	expression tag	UNP Q2QKN3
C	1275	GLY	-	expression tag	UNP Q2QKN3
C	1276	SER	-	expression tag	UNP Q2QKN3
C	1277	GLY	-	expression tag	UNP Q2QKN3
C	1278	TYR	-	expression tag	UNP Q2QKN3
C	1279	ILE	-	expression tag	UNP Q2QKN3
C	1280	PRO	-	expression tag	UNP Q2QKN3
C	1281	GLU	-	expression tag	UNP Q2QKN3
C	1282	ALA	-	expression tag	UNP Q2QKN3
C	1283	PRO	-	expression tag	UNP Q2QKN3
C	1284	ARG	-	expression tag	UNP Q2QKN3
C	1285	ASP	-	expression tag	UNP Q2QKN3
C	1286	GLY	-	expression tag	UNP Q2QKN3
C	1287	GLN	-	expression tag	UNP Q2QKN3
C	1288	ALA	-	expression tag	UNP Q2QKN3
C	1289	TYR	-	expression tag	UNP Q2QKN3
C	1290	VAL	-	expression tag	UNP Q2QKN3
C	1291	ARG	-	expression tag	UNP Q2QKN3
C	1292	LYS	-	expression tag	UNP Q2QKN3
C	1293	ASP	-	expression tag	UNP Q2QKN3
C	1294	GLY	-	expression tag	UNP Q2QKN3
C	1295	GLU	-	expression tag	UNP Q2QKN3
C	1296	TRP	-	expression tag	UNP Q2QKN3
C	1297	VAL	-	expression tag	UNP Q2QKN3
C	1298	LEU	-	expression tag	UNP Q2QKN3
C	1299	LEU	-	expression tag	UNP Q2QKN3
C	1300	SER	-	expression tag	UNP Q2QKN3
C	1301	THR	-	expression tag	UNP Q2QKN3
C	1302	PHE	-	expression tag	UNP Q2QKN3
C	1303	LEU	-	expression tag	UNP Q2QKN3
C	1304	GLY	-	expression tag	UNP Q2QKN3
C	1305	SER	-	expression tag	UNP Q2QKN3
C	1306	LEU	-	expression tag	UNP Q2QKN3
C	1307	VAL	-	expression tag	UNP Q2QKN3
C	1308	PRO	-	expression tag	UNP Q2QKN3
C	1309	ARG	-	expression tag	UNP Q2QKN3

Continued on next page...

Continued from previous page...

Chain	Residue	Modelled	Actual	Comment	Reference
C	1310	GLY	-	expression tag	UNP Q2QKN3
C	1311	SER	-	expression tag	UNP Q2QKN3
C	1312	HIS	-	expression tag	UNP Q2QKN3
C	1313	HIS	-	expression tag	UNP Q2QKN3
C	1314	HIS	-	expression tag	UNP Q2QKN3
C	1315	HIS	-	expression tag	UNP Q2QKN3
C	1316	HIS	-	expression tag	UNP Q2QKN3
C	1317	HIS	-	expression tag	UNP Q2QKN3
C	1318	HIS	-	expression tag	UNP Q2QKN3
C	1319	HIS	-	expression tag	UNP Q2QKN3
C	1320	SER	-	expression tag	UNP Q2QKN3
C	1321	ALA	-	expression tag	UNP Q2QKN3
C	1322	TRP	-	expression tag	UNP Q2QKN3
C	1323	SER	-	expression tag	UNP Q2QKN3
C	1324	HIS	-	expression tag	UNP Q2QKN3
C	1325	PRO	-	expression tag	UNP Q2QKN3
C	1326	GLN	-	expression tag	UNP Q2QKN3
C	1327	PHE	-	expression tag	UNP Q2QKN3
C	1328	GLU	-	expression tag	UNP Q2QKN3
C	1329	LYS	-	expression tag	UNP Q2QKN3
C	1330	GLY	-	expression tag	UNP Q2QKN3
C	1331	THR	-	expression tag	UNP Q2QKN3
C	1332	GLY	-	expression tag	UNP Q2QKN3
C	1333	GLY	-	expression tag	UNP Q2QKN3
C	1334	LEU	-	expression tag	UNP Q2QKN3
C	1335	ASN	-	expression tag	UNP Q2QKN3
C	1336	ASP	-	expression tag	UNP Q2QKN3
C	1337	ILE	-	expression tag	UNP Q2QKN3
C	1338	PHE	-	expression tag	UNP Q2QKN3
C	1339	GLU	-	expression tag	UNP Q2QKN3
C	1340	ALA	-	expression tag	UNP Q2QKN3
C	1341	GLN	-	expression tag	UNP Q2QKN3
C	1342	LYS	-	expression tag	UNP Q2QKN3
C	1343	ILE	-	expression tag	UNP Q2QKN3
C	1344	GLU	-	expression tag	UNP Q2QKN3
C	1345	TRP	-	expression tag	UNP Q2QKN3
C	1346	HIS	-	expression tag	UNP Q2QKN3
C	1347	GLU	-	expression tag	UNP Q2QKN3
H	1275	GLY	-	expression tag	UNP Q2QKN3
H	1276	SER	-	expression tag	UNP Q2QKN3
H	1277	GLY	-	expression tag	UNP Q2QKN3
H	1278	TYR	-	expression tag	UNP Q2QKN3

Continued on next page...

Continued from previous page...

Chain	Residue	Modelled	Actual	Comment	Reference
H	1279	ILE	-	expression tag	UNP Q2QKN3
H	1280	PRO	-	expression tag	UNP Q2QKN3
H	1281	GLU	-	expression tag	UNP Q2QKN3
H	1282	ALA	-	expression tag	UNP Q2QKN3
H	1283	PRO	-	expression tag	UNP Q2QKN3
H	1284	ARG	-	expression tag	UNP Q2QKN3
H	1285	ASP	-	expression tag	UNP Q2QKN3
H	1286	GLY	-	expression tag	UNP Q2QKN3
H	1287	GLN	-	expression tag	UNP Q2QKN3
H	1288	ALA	-	expression tag	UNP Q2QKN3
H	1289	TYR	-	expression tag	UNP Q2QKN3
H	1290	VAL	-	expression tag	UNP Q2QKN3
H	1291	ARG	-	expression tag	UNP Q2QKN3
H	1292	LYS	-	expression tag	UNP Q2QKN3
H	1293	ASP	-	expression tag	UNP Q2QKN3
H	1294	GLY	-	expression tag	UNP Q2QKN3
H	1295	GLU	-	expression tag	UNP Q2QKN3
H	1296	TRP	-	expression tag	UNP Q2QKN3
H	1297	VAL	-	expression tag	UNP Q2QKN3
H	1298	LEU	-	expression tag	UNP Q2QKN3
H	1299	LEU	-	expression tag	UNP Q2QKN3
H	1300	SER	-	expression tag	UNP Q2QKN3
H	1301	THR	-	expression tag	UNP Q2QKN3
H	1302	PHE	-	expression tag	UNP Q2QKN3
H	1303	LEU	-	expression tag	UNP Q2QKN3
H	1304	GLY	-	expression tag	UNP Q2QKN3
H	1305	SER	-	expression tag	UNP Q2QKN3
H	1306	LEU	-	expression tag	UNP Q2QKN3
H	1307	VAL	-	expression tag	UNP Q2QKN3
H	1308	PRO	-	expression tag	UNP Q2QKN3
H	1309	ARG	-	expression tag	UNP Q2QKN3
H	1310	GLY	-	expression tag	UNP Q2QKN3
H	1311	SER	-	expression tag	UNP Q2QKN3
H	1312	HIS	-	expression tag	UNP Q2QKN3
H	1313	HIS	-	expression tag	UNP Q2QKN3
H	1314	HIS	-	expression tag	UNP Q2QKN3
H	1315	HIS	-	expression tag	UNP Q2QKN3
H	1316	HIS	-	expression tag	UNP Q2QKN3
H	1317	HIS	-	expression tag	UNP Q2QKN3
H	1318	HIS	-	expression tag	UNP Q2QKN3
H	1319	HIS	-	expression tag	UNP Q2QKN3
H	1320	SER	-	expression tag	UNP Q2QKN3

Continued on next page...

Continued from previous page...

Chain	Residue	Modelled	Actual	Comment	Reference
H	1321	ALA	-	expression tag	UNP Q2QKN3
H	1322	TRP	-	expression tag	UNP Q2QKN3
H	1323	SER	-	expression tag	UNP Q2QKN3
H	1324	HIS	-	expression tag	UNP Q2QKN3
H	1325	PRO	-	expression tag	UNP Q2QKN3
H	1326	GLN	-	expression tag	UNP Q2QKN3
H	1327	PHE	-	expression tag	UNP Q2QKN3
H	1328	GLU	-	expression tag	UNP Q2QKN3
H	1329	LYS	-	expression tag	UNP Q2QKN3
H	1330	GLY	-	expression tag	UNP Q2QKN3
H	1331	THR	-	expression tag	UNP Q2QKN3
H	1332	GLY	-	expression tag	UNP Q2QKN3
H	1333	GLY	-	expression tag	UNP Q2QKN3
H	1334	LEU	-	expression tag	UNP Q2QKN3
H	1335	ASN	-	expression tag	UNP Q2QKN3
H	1336	ASP	-	expression tag	UNP Q2QKN3
H	1337	ILE	-	expression tag	UNP Q2QKN3
H	1338	PHE	-	expression tag	UNP Q2QKN3
H	1339	GLU	-	expression tag	UNP Q2QKN3
H	1340	ALA	-	expression tag	UNP Q2QKN3
H	1341	GLN	-	expression tag	UNP Q2QKN3
H	1342	LYS	-	expression tag	UNP Q2QKN3
H	1343	ILE	-	expression tag	UNP Q2QKN3
H	1344	GLU	-	expression tag	UNP Q2QKN3
H	1345	TRP	-	expression tag	UNP Q2QKN3
H	1346	HIS	-	expression tag	UNP Q2QKN3
H	1347	GLU	-	expression tag	UNP Q2QKN3

- Molecule 2 is an oligosaccharide called 2-acetamido-2-deoxy-beta-D-glucopyranose-(1-4)-2-acetamido-2-deoxy-beta-D-glucopyranose.



Mol	Chain	Residues	Atoms				AltConf	Trace
2	D	2	Total	C	N	O	0	0
			28	16	2	10		
2	B	2	Total	C	N	O	0	0
			28	16	2	10		
2	G	2	Total	C	N	O	0	0
			28	16	2	10		

- Molecule 3 is 2-acetamido-2-deoxy-beta-D-glucopyranose (CCD ID: NAG) (formula: $C_8H_{15}NO_6$).



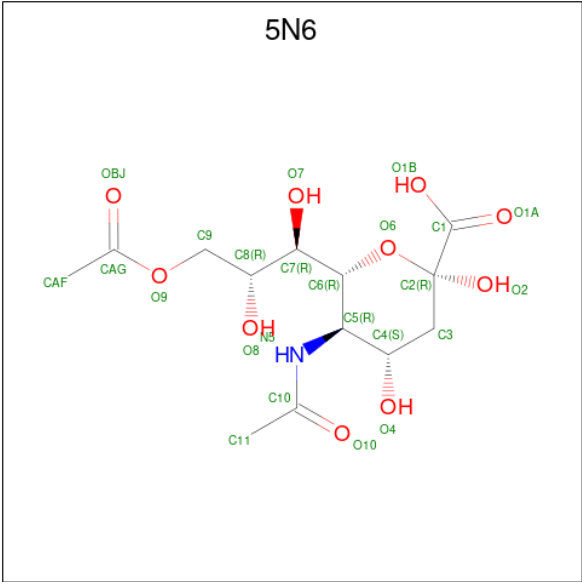
Mol	Chain	Residues	Atoms				AltConf
3	A	1	Total	C	N	O	0
			14	8	1	5	
3	A	1	Total	C	N	O	0
			14	8	1	5	
3	A	1	Total	C	N	O	0
			14	8	1	5	
3	A	1	Total	C	N	O	0
			14	8	1	5	
3	A	1	Total	C	N	O	0
			14	8	1	5	
3	A	1	Total	C	N	O	0
			14	8	1	5	
3	A	1	Total	C	N	O	0
			14	8	1	5	
3	A	1	Total	C	N	O	0
			14	8	1	5	
3	C	1	Total	C	N	O	0
			14	8	1	5	
3	C	1	Total	C	N	O	0
			14	8	1	5	

Continued on next page...

Continued from previous page...

Mol	Chain	Residues	Atoms				AltConf
3	C	1	Total	C	N	O	0
			14	8	1	5	
3	C	1	Total	C	N	O	0
			14	8	1	5	
3	C	1	Total	C	N	O	0
			14	8	1	5	
3	C	1	Total	C	N	O	0
			14	8	1	5	
3	C	1	Total	C	N	O	0
			14	8	1	5	
3	C	1	Total	C	N	O	0
			14	8	1	5	
3	C	1	Total	C	N	O	0
			14	8	1	5	
3	H	1	Total	C	N	O	0
			14	8	1	5	
3	H	1	Total	C	N	O	0
			14	8	1	5	
3	H	1	Total	C	N	O	0
			14	8	1	5	
3	H	1	Total	C	N	O	0
			14	8	1	5	
3	H	1	Total	C	N	O	0
			14	8	1	5	
3	H	1	Total	C	N	O	0
			14	8	1	5	
3	H	1	Total	C	N	O	0
			14	8	1	5	
3	H	1	Total	C	N	O	0
			14	8	1	5	

- Molecule 4 is 9-O-acetyl-5-acetamido-3,5-dideoxy-D-glycero- α -D-galacto-non-2-ulopyranosonic acid (CCD ID: 5N6) (formula: $C_{13}H_{21}NO_{10}$) (labeled as "Ligand of Interest" by depositor).

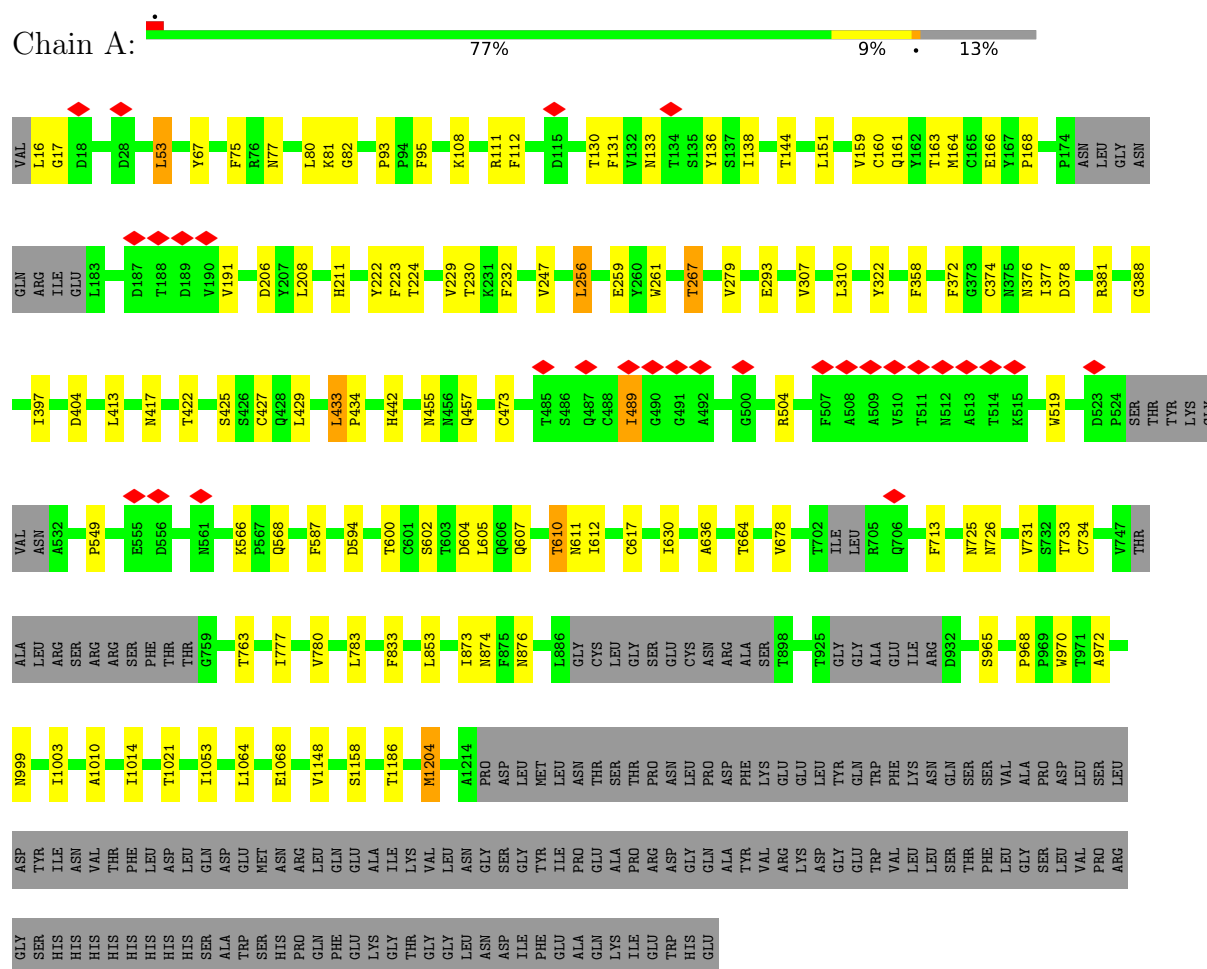


Mol	Chain	Residues	Atoms				AltConf
4	A	1	Total	C	N	O	0
			24	13	1	10	
4	C	1	Total	C	N	O	0
			24	13	1	10	
4	H	1	Total	C	N	O	0
			24	13	1	10	

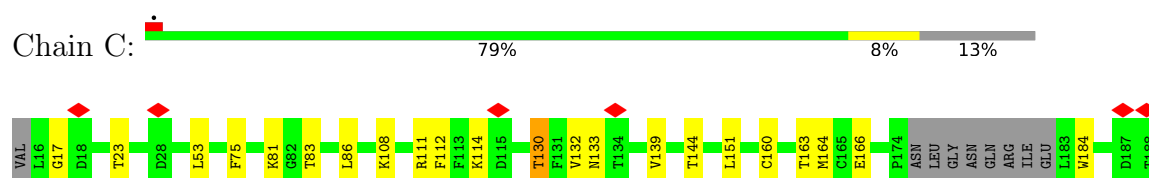
3 Residue-property plots

These plots are drawn for all protein, RNA, DNA and oligosaccharide chains in the entry. The first graphic for a chain summarises the proportions of the various outlier classes displayed in the second graphic. The second graphic shows the sequence view annotated by issues in geometry and atom inclusion in map density. Residues are color-coded according to the number of geometric quality criteria for which they contain at least one outlier: green = 0, yellow = 1, orange = 2 and red = 3 or more. A red diamond above a residue indicates a poor fit to the EM map for this residue (all-atom inclusion < 40%). Stretches of 2 or more consecutive residues without any outlier are shown as a green connector. Residues present in the sample, but not in the model, are shown in grey.

• Molecule 1: Spike glycoprotein



• Molecule 1: Spike glycoprotein



HIS	HIS	HIS	SER	ALA	TRP	SER	HIS	PRO	GLN	PHE	GLU	LYS	GLY	THR	GLY	GLY	LEU	ASN	ASP	ILE	PHE	GLU	ALA	GLN	LYS	ILE	GLU	TRP	HIS	GLU
-----	-----	-----	-----	-----	-----	-----	-----	-----	-----	-----	-----	-----	-----	-----	-----	-----	-----	-----	-----	-----	-----	-----	-----	-----	-----	-----	-----	-----	-----	-----

- Molecule 2: 2-acetamido-2-deoxy-beta-D-glucopyranose-(1-4)-2-acetamido-2-deoxy-beta-D-glucopyranose



- Molecule 2: 2-acetamido-2-deoxy-beta-D-glucopyranose-(1-4)-2-acetamido-2-deoxy-beta-D-glucopyranose



- Molecule 2: 2-acetamido-2-deoxy-beta-D-glucopyranose-(1-4)-2-acetamido-2-deoxy-beta-D-glucopyranose



4 Experimental information

Property	Value	Source
EM reconstruction method	SINGLE PARTICLE	Depositor
Imposed symmetry	POINT, Not provided	
Number of particles used	67985	Depositor
Resolution determination method	FSC 0.143 CUT-OFF	Depositor
CTF correction method	PHASE FLIPPING AND AMPLITUDE CORRECTION	Depositor
Microscope	TFS GLACIOS	Depositor
Voltage (kV)	200	Depositor
Electron dose ($e^-/\text{\AA}^2$)	40	Depositor
Minimum defocus (nm)	750	Depositor
Maximum defocus (nm)	2500	Depositor
Magnification	Not provided	
Image detector	FEI FALCON IV (4k x 4k)	Depositor
Maximum map value	0.487	Depositor
Minimum map value	-0.206	Depositor
Average map value	0.001	Depositor
Map value standard deviation	0.020	Depositor
Recommended contour level	0.0878	Depositor
Map size (\AA)	292.31998, 292.31998, 292.31998	wwPDB
Map dimensions	252, 252, 252	wwPDB
Map angles ($^\circ$)	90.0, 90.0, 90.0	wwPDB
Pixel spacing (\AA)	1.16, 1.16, 1.16	Depositor

5 Model quality [i](#)

5.1 Standard geometry [i](#)

Bond lengths and bond angles in the following residue types are not validated in this section: NAG, 5N6

The Z score for a bond length (or angle) is the number of standard deviations the observed value is removed from the expected value. A bond length (or angle) with $|Z| > 5$ is considered an outlier worth inspection. RMSZ is the root-mean-square of all Z scores of the bond lengths (or angles).

Mol	Chain	Bond lengths		Bond angles	
		RMSZ	$\# Z > 5$	RMSZ	$\# Z > 5$
1	A	0.15	0/9163	0.28	0/12489
1	C	0.15	0/9163	0.28	0/12489
1	H	0.15	0/9164	0.28	0/12490
All	All	0.15	0/27490	0.28	0/37468

There are no bond length outliers.

There are no bond angle outliers.

There are no chirality outliers.

There are no planarity outliers.

5.2 Too-close contacts [i](#)

In the following table, the Non-H and H(model) columns list the number of non-hydrogen atoms and hydrogen atoms in the chain respectively. The H(added) column lists the number of hydrogen atoms added and optimized by MolProbity. The Clashes column lists the number of clashes within the asymmetric unit, whereas Symm-Clashes lists symmetry-related clashes.

Mol	Chain	Non-H	H(model)	H(added)	Clashes	Symm-Clashes
1	A	8957	0	8593	64	0
1	C	8957	0	8592	50	0
1	H	8958	0	8595	57	0
2	B	28	0	25	0	0
2	D	28	0	25	0	0
2	G	28	0	25	0	0
3	A	140	0	130	1	0
3	C	140	0	130	1	0
3	H	140	0	130	0	0
4	A	24	0	0	0	0

Continued on next page...

Continued from previous page...

Mol	Chain	Non-H	H(model)	H(added)	Clashes	Symm-Clashes
4	C	24	0	0	0	0
4	H	24	0	0	0	0
All	All	27448	0	26245	163	0

The all-atom clashscore is defined as the number of clashes found per 1000 atoms (including hydrogen atoms). The all-atom clashscore for this structure is 3.

All (163) close contacts within the same asymmetric unit are listed below, sorted by their clash magnitude.

Atom-1	Atom-2	Interatomic distance (Å)	Clash overlap (Å)
1:A:873:ILE:HG12	1:H:777:ILE:HD11	1.71	0.72
1:C:307:VAL:HG22	1:C:678:VAL:HG12	1.73	0.69
1:A:473:CYS:HB3	1:A:549:PRO:HD2	1.77	0.66
1:A:307:VAL:HG22	1:A:678:VAL:HG12	1.76	0.66
1:H:473:CYS:HB3	1:H:549:PRO:HD2	1.77	0.65
1:C:473:CYS:HB3	1:C:549:PRO:HD2	1.79	0.65
1:H:413:LEU:HD13	1:H:417:ASN:HD22	1.62	0.65
1:A:413:LEU:HD23	1:A:417:ASN:HD22	1.61	0.64
1:H:224:THR:HB	1:H:230:THR:HA	1.79	0.64
1:C:397:ILE:HD11	1:C:587:PHE:HB2	1.80	0.64
1:A:968:PRO:HG2	1:H:777:ILE:HA	1.79	0.63
1:H:140:VAL:HG13	1:H:155:LEU:HD21	1.79	0.63
1:A:777:ILE:HA	1:C:968:PRO:HG2	1.81	0.62
1:C:224:THR:HB	1:C:230:THR:HA	1.82	0.62
1:H:566:LYS:HE3	1:H:568:GLN:HB2	1.82	0.61
1:H:397:ILE:HD11	1:H:587:PHE:HB2	1.82	0.61
1:A:224:THR:HB	1:A:230:THR:HA	1.83	0.60
1:C:388:GLY:HA3	1:C:594:ASP:HB3	1.83	0.60
1:H:726:ASN:HB2	1:H:763:THR:HG22	1.84	0.59
1:C:777:ILE:HA	1:H:968:PRO:HG2	1.83	0.59
1:H:359:ASN:HD22	1:H:603:THR:HG23	1.67	0.59
1:A:397:ILE:HD11	1:A:587:PHE:HB2	1.84	0.59
1:C:75:PHE:HB3	1:C:261:TRP:HB3	1.84	0.59
1:H:75:PHE:HB3	1:H:261:TRP:HB3	1.85	0.58
1:H:965:SER:HB3	1:H:972:ALA:HB3	1.86	0.57
1:A:388:GLY:HA3	1:A:594:ASP:HB3	1.85	0.57
1:C:566:LYS:HE3	1:C:568:GLN:HB2	1.87	0.57
1:C:726:ASN:HB2	1:C:763:THR:HG22	1.85	0.56
1:A:504:ARG:HG3	1:A:519:TRP:HE1	1.70	0.56
1:C:504:ARG:HG3	1:C:519:TRP:HE1	1.70	0.56
1:A:404:ASP:HB3	1:A:413:LEU:HD12	1.88	0.56

Continued on next page...

Continued from previous page...

Atom-1	Atom-2	Interatomic distance (Å)	Clash overlap (Å)
1:H:504:ARG:HG3	1:H:519:TRP:HE1	1.70	0.56
1:H:401:ARG:HH12	1:H:412:TYR:HD2	1.54	0.55
1:H:67:TYR:CE1	1:H:267:THR:HG22	2.41	0.55
1:A:965:SER:HB3	1:A:972:ALA:HB3	1.89	0.55
1:C:777:ILE:HD11	1:H:873:ILE:HG12	1.89	0.54
1:A:566:LYS:HG2	1:A:568:GLN:H	1.73	0.54
1:A:75:PHE:HB3	1:A:261:TRP:HB3	1.89	0.53
1:C:965:SER:HB3	1:C:972:ALA:HB3	1.89	0.53
1:A:112:PHE:HB2	1:A:256:LEU:HD11	1.89	0.53
1:C:197:ARG:HA	3:C:1401:NAG:H82	1.90	0.53
1:C:617:CYS:HB3	1:C:630:ILE:HG12	1.91	0.53
1:H:986:ILE:HG22	1:H:991:VAL:HG21	1.90	0.53
1:A:636:ALA:HB3	1:A:664:THR:HG21	1.91	0.53
1:A:1204:MET:HE2	1:C:997:SER:HB3	1.91	0.53
1:A:378:ASP:HB3	1:A:381:ARG:HG2	1.90	0.53
1:H:23:THR:HG23	1:H:86:LEU:HD12	1.90	0.52
1:A:144:THR:HB	1:A:151:LEU:HD11	1.91	0.52
1:C:133:ASN:HB3	1:C:163:THR:HG22	1.92	0.52
1:H:388:GLY:HA3	1:H:594:ASP:HB3	1.90	0.52
1:H:566:LYS:HG2	1:H:568:GLN:H	1.75	0.52
1:C:211:HIS:HB2	1:C:222:TYR:HB2	1.90	0.52
1:C:566:LYS:HG2	1:C:568:GLN:H	1.74	0.52
1:A:67:TYR:HE1	1:A:267:THR:HB	1.75	0.51
1:H:112:PHE:HB2	1:H:256:LEU:HD11	1.93	0.51
1:H:211:HIS:HB2	1:H:222:TYR:HB2	1.91	0.51
1:H:1053:ILE:HD12	1:H:1064:LEU:HD11	1.91	0.51
1:H:378:ASP:HB3	1:H:381:ARG:HG2	1.92	0.50
1:H:108:LYS:HB3	1:H:259:GLU:HB2	1.94	0.50
1:A:17:GLY:H	1:A:166:GLU:HA	1.77	0.50
1:H:133:ASN:HB3	1:H:163:THR:HG22	1.93	0.50
1:H:634:VAL:HG21	1:H:666:LEU:HD13	1.94	0.49
1:C:144:THR:HB	1:C:151:LEU:HD11	1.95	0.49
1:C:772:LEU:HD12	1:H:867:THR:HG22	1.94	0.49
1:C:108:LYS:HB3	1:C:259:GLU:HB2	1.95	0.49
1:C:164:MET:HE1	1:C:184:TRP:HD1	1.78	0.49
1:H:164:MET:HE1	1:H:184:TRP:HD1	1.77	0.49
1:C:111:ARG:HH12	1:C:206:ASP:HA	1.77	0.49
1:H:144:THR:HB	1:H:151:LEU:HD11	1.95	0.48
1:A:108:LYS:HB3	1:A:259:GLU:HB2	1.96	0.48
3:A:1404:NAG:H82	1:C:867:THR:HG21	1.94	0.48
1:H:783:LEU:HD23	1:H:1158:SER:HB3	1.96	0.48

Continued on next page...

Continued from previous page...

Atom-1	Atom-2	Interatomic distance (Å)	Clash overlap (Å)
1:A:81:LYS:HE3	1:A:256:LEU:H	1.78	0.47
1:C:783:LEU:HD23	1:C:1158:SER:HB3	1.95	0.47
1:H:291:MET:HE3	1:H:295:MET:HE3	1.96	0.47
1:A:136:TYR:HA	1:A:161:GLN:HA	1.97	0.47
1:A:376:ASN:HB2	1:A:425:SER:HA	1.97	0.47
1:A:1204:MET:HE3	1:C:993:MET:HB3	1.96	0.47
1:A:208:LEU:HD23	1:A:223:PHE:HE1	1.79	0.46
1:C:23:THR:HG23	1:C:86:LEU:HD12	1.96	0.46
1:A:111:ARG:HH12	1:A:206:ASP:HA	1.80	0.46
1:A:211:HIS:HB2	1:A:222:TYR:HB2	1.97	0.46
1:A:433:LEU:HD13	1:A:434:PRO:HD2	1.98	0.46
1:C:130:THR:HB	1:C:132:VAL:HG22	1.98	0.46
1:A:566:LYS:HE3	1:A:568:GLN:HB3	1.97	0.45
1:C:358:PHE:CZ	1:C:602:SER:HB3	2.52	0.45
1:C:999:ASN:O	1:C:1003:ILE:HG12	2.17	0.45
1:C:112:PHE:HB2	1:C:256:LEU:HD11	1.98	0.45
1:C:376:ASN:HB2	1:C:425:SER:HA	1.98	0.45
1:A:783:LEU:HD23	1:A:1158:SER:HB3	1.99	0.45
1:H:77:ASN:HB2	1:H:261:TRP:CZ3	2.51	0.45
1:H:123:PRO:HD3	1:H:258:LEU:HD12	1.99	0.45
1:C:291:MET:HE2	1:C:686:PRO:HD3	1.98	0.45
1:C:1010:ALA:O	1:C:1014:ILE:HG12	2.17	0.44
1:A:489:ILE:H	1:A:489:ILE:HG13	1.65	0.44
1:A:53:LEU:H	1:A:53:LEU:HG	1.60	0.44
1:A:77:ASN:HB2	1:A:261:TRP:CZ3	2.52	0.44
1:A:138:ILE:HG13	1:A:159:VAL:HG13	1.99	0.44
1:C:537:GLN:HE22	1:C:553:LEU:HB3	1.82	0.44
1:A:133:ASN:HB3	1:A:163:THR:HG22	1.99	0.44
1:A:1010:ALA:O	1:A:1014:ILE:HG12	2.18	0.44
1:C:617:CYS:HB3	1:C:630:ILE:CG1	2.48	0.44
1:H:67:TYR:HE1	1:H:267:THR:HG22	1.81	0.44
1:H:80:LEU:HD21	1:H:95:PHE:HE2	1.83	0.44
1:H:372:PHE:HD1	1:H:429:LEU:HB2	1.83	0.44
1:H:634:VAL:HG12	1:H:635:ASN:H	1.83	0.44
1:C:17:GLY:H	1:C:166:GLU:HA	1.82	0.43
1:H:130:THR:HB	1:H:132:VAL:HG22	2.00	0.43
1:A:999:ASN:O	1:A:1003:ILE:HG12	2.18	0.43
1:C:81:LYS:HE3	1:C:256:LEU:H	1.83	0.43
1:C:679:PHE:HB2	1:C:686:PRO:HB3	2.01	0.43
1:A:853:LEU:HD12	1:A:853:LEU:HA	1.91	0.43
1:H:81:LYS:HD3	1:H:82:GLY:N	2.33	0.43

Continued on next page...

Continued from previous page...

Atom-1	Atom-2	Interatomic distance (Å)	Clash overlap (Å)
1:H:836:ASN:O	1:H:840:ILE:HG12	2.19	0.43
1:H:968:PRO:HA	1:H:970:TRP:CE2	2.54	0.43
1:A:374:CYS:HA	1:A:427:CYS:HA	2.01	0.43
1:C:164:MET:HE1	1:C:184:TRP:CD1	2.54	0.43
1:A:358:PHE:CZ	1:A:602:SER:HB3	2.54	0.42
1:A:293:GLU:HG2	1:A:310:LEU:HD22	2.01	0.42
1:A:131:PHE:HD2	1:A:164:MET:HG3	1.85	0.42
1:C:83:THR:HG23	1:C:253:ASP:HA	2.01	0.42
1:H:636:ALA:HB3	1:H:664:THR:HG21	2.01	0.42
1:A:874:ASN:HD21	1:A:876:ASN:HB3	1.85	0.42
1:H:358:PHE:CZ	1:H:602:SER:HB3	2.55	0.42
1:A:131:PHE:HB3	1:A:164:MET:HB2	2.01	0.42
1:A:16:LEU:HD23	1:A:168:PRO:HG3	2.02	0.41
1:A:713:PHE:CZ	1:A:725:ASN:HB3	2.55	0.41
1:H:999:ASN:O	1:H:1003:ILE:HG12	2.20	0.41
1:A:372:PHE:HD1	1:A:429:LEU:HB2	1.85	0.41
1:C:112:PHE:CE2	1:C:114:LYS:HB2	2.55	0.41
1:A:80:LEU:HD21	1:A:95:PHE:HE2	1.85	0.41
1:A:93:PRO:HA	1:A:95:PHE:H	1.85	0.41
1:C:786:ILE:HD12	1:C:786:ILE:HA	1.88	0.41
1:H:376:ASN:HB2	1:H:425:SER:HA	2.02	0.41
1:A:731:VAL:HG22	1:A:733:THR:H	1.85	0.41
1:C:1011:LEU:HD23	1:C:1011:LEU:HA	1.93	0.41
1:A:610:THR:HG22	1:A:611:ASN:H	1.86	0.41
1:C:222:TYR:CD2	1:C:232:PHE:HA	2.55	0.41
1:C:604:ASP:O	1:C:605:LEU:HB3	2.20	0.41
1:H:37:SER:HB3	1:H:261:TRP:CZ3	2.55	0.41
1:H:209:TYR:HB2	1:H:224:THR:HG22	2.02	0.41
1:A:968:PRO:HA	1:A:970:TRP:CE2	2.55	0.41
1:C:273:ALA:HB3	1:C:282:HIS:HB3	2.02	0.41
1:A:322:TYR:CG	1:A:607:GLN:HG2	2.56	0.41
1:A:617:CYS:HB3	1:A:630:ILE:CG1	2.50	0.41
1:A:726:ASN:HB2	1:A:763:THR:HG22	2.02	0.41
1:C:374:CYS:HA	1:C:427:CYS:HA	2.02	0.41
1:H:164:MET:HE1	1:H:184:TRP:CD1	2.54	0.41
1:H:222:TYR:CD2	1:H:232:PHE:HA	2.55	0.41
1:A:256:LEU:HD13	1:A:256:LEU:HA	1.89	0.41
1:H:93:PRO:HA	1:H:95:PHE:H	1.85	0.40
1:H:613:THR:HG21	1:H:618:VAL:HG11	2.03	0.40
1:H:256:LEU:HD13	1:H:256:LEU:HA	1.92	0.40
1:H:656:PHE:CE1	1:H:665:PHE:HB2	2.56	0.40

Continued on next page...

Continued from previous page...

Atom-1	Atom-2	Interatomic distance (Å)	Clash overlap (Å)
1:A:604:ASP:O	1:A:605:LEU:HB3	2.20	0.40
1:C:455:ASN:ND2	1:C:457:GLN:HB2	2.36	0.40
1:H:273:ALA:HB3	1:H:282:HIS:HB3	2.04	0.40
1:A:81:LYS:HD3	1:A:82:GLY:N	2.37	0.40
1:A:222:TYR:CD2	1:A:232:PHE:HA	2.57	0.40
1:A:322:TYR:CE1	1:A:607:GLN:HB3	2.56	0.40
1:A:455:ASN:ND2	1:A:457:GLN:HB2	2.36	0.40
1:A:1053:ILE:HD12	1:A:1064:LEU:HD11	2.02	0.40
1:H:537:GLN:HE22	1:H:553:LEU:HB3	1.86	0.40

There are no symmetry-related clashes.

5.3 Torsion angles ⓘ

5.3.1 Protein backbone ⓘ

In the following table, the Percentiles column shows the percent Ramachandran outliers of the chain as a percentile score with respect to all PDB entries followed by that with respect to all EM entries.

The Analysed column shows the number of residues for which the backbone conformation was analysed, and the total number of residues.

Mol	Chain	Analysed	Favoured	Allowed	Outliers	Percentiles	
1	A	1140/1333 (86%)	1094 (96%)	45 (4%)	1 (0%)	48	79
1	C	1140/1333 (86%)	1096 (96%)	42 (4%)	2 (0%)	44	74
1	H	1140/1333 (86%)	1096 (96%)	44 (4%)	0	100	100
All	All	3420/3999 (86%)	3286 (96%)	131 (4%)	3 (0%)	50	79

All (3) Ramachandran outliers are listed below:

Mol	Chain	Res	Type
1	C	606	GLN
1	A	612	ILE
1	C	612	ILE

5.3.2 Protein sidechains ⓘ

In the following table, the Percentiles column shows the percent sidechain outliers of the chain as a percentile score with respect to all PDB entries followed by that with respect to all EM entries.

The Analysed column shows the number of residues for which the sidechain conformation was analysed, and the total number of residues.

Mol	Chain	Analysed	Rotameric	Outliers	Percentiles	
1	A	1002/1160 (86%)	978 (98%)	24 (2%)	44	70
1	C	1002/1160 (86%)	977 (98%)	25 (2%)	42	69
1	H	1002/1160 (86%)	982 (98%)	20 (2%)	50	74
All	All	3006/3480 (86%)	2937 (98%)	69 (2%)	46	70

All (69) residues with a non-rotameric sidechain are listed below:

Mol	Chain	Res	Type
1	A	53	LEU
1	A	130	THR
1	A	160	CYS
1	A	191	VAL
1	A	229	VAL
1	A	247	VAL
1	A	256	LEU
1	A	267	THR
1	A	279	VAL
1	A	377	ILE
1	A	422	THR
1	A	433	LEU
1	A	442	HIS
1	A	489	ILE
1	A	600	THR
1	A	610	THR
1	A	734	CYS
1	A	780	VAL
1	A	833	PHE
1	A	1021	THR
1	A	1068	GLU
1	A	1148	VAL
1	A	1186	THR
1	A	1204	MET
1	C	53	LEU
1	C	130	THR

Continued on next page...

Continued from previous page...

Mol	Chain	Res	Type
1	C	139	VAL
1	C	160	CYS
1	C	256	LEU
1	C	267	THR
1	C	279	VAL
1	C	407	VAL
1	C	442	HIS
1	C	600	THR
1	C	605	LEU
1	C	610	THR
1	C	634	VAL
1	C	675	VAL
1	C	709	LEU
1	C	734	CYS
1	C	743	CYS
1	C	780	VAL
1	C	833	PHE
1	C	860	MET
1	C	877	VAL
1	C	914	ASP
1	C	1021	THR
1	C	1090	GLN
1	C	1204	MET
1	H	53	LEU
1	H	130	THR
1	H	160	CYS
1	H	214	GLN
1	H	256	LEU
1	H	279	VAL
1	H	407	VAL
1	H	571	ILE
1	H	600	THR
1	H	634	VAL
1	H	670	CYS
1	H	675	VAL
1	H	704	LEU
1	H	734	CYS
1	H	780	VAL
1	H	833	PHE
1	H	877	VAL
1	H	1021	THR
1	H	1148	VAL

Continued on next page...

Continued from previous page...

Mol	Chain	Res	Type
1	H	1201	VAL

Sometimes sidechains can be flipped to improve hydrogen bonding and reduce clashes. All (25) such sidechains are listed below:

Mol	Chain	Res	Type
1	A	161	GLN
1	A	311	ASN
1	A	316	GLN
1	A	376	ASN
1	A	417	ASN
1	A	692	ASN
1	A	874	ASN
1	A	1072	GLN
1	C	376	ASN
1	C	417	ASN
1	C	537	GLN
1	C	593	ASN
1	C	652	ASN
1	C	692	ASN
1	C	796	ASN
1	H	65	ASN
1	H	143	HIS
1	H	152	GLN
1	H	269	GLN
1	H	376	ASN
1	H	417	ASN
1	H	521	GLN
1	H	838	ASN
1	H	1045	GLN
1	H	1072	GLN

5.3.3 RNA ⓘ

There are no RNA molecules in this entry.

5.4 Non-standard residues in protein, DNA, RNA chains ⓘ

There are no non-standard protein/DNA/RNA residues in this entry.

5.5 Carbohydrates

6 monosaccharides are modelled in this entry.

In the following table, the Counts columns list the number of bonds (or angles) for which Mogul statistics could be retrieved, the number of bonds (or angles) that are observed in the model and the number of bonds (or angles) that are defined in the Chemical Component Dictionary. The Link column lists molecule types, if any, to which the group is linked. The Z score for a bond length (or angle) is the number of standard deviations the observed value is removed from the expected value. A bond length (or angle) with $|Z| > 2$ is considered an outlier worth inspection. RMSZ is the root-mean-square of all Z scores of the bond lengths (or angles).

Mol	Type	Chain	Res	Link	Bond lengths			Bond angles		
					Counts	RMSZ	# Z > 2	Counts	RMSZ	# Z > 2
2	NAG	B	1	2	14,14,15	0.74	0	17,19,21	0.81	0
2	NAG	B	2	2	14,14,15	0.72	0	17,19,21	1.16	1 (5%)
2	NAG	D	1	2	14,14,15	0.74	0	17,19,21	0.80	0
2	NAG	D	2	2	14,14,15	0.72	0	17,19,21	1.17	1 (5%)
2	NAG	G	1	2	14,14,15	0.74	0	17,19,21	0.81	0
2	NAG	G	2	2	14,14,15	0.72	0	17,19,21	1.16	1 (5%)

In the following table, the Chirals column lists the number of chiral outliers, the number of chiral centers analysed, the number of these observed in the model and the number defined in the Chemical Component Dictionary. Similar counts are reported in the Torsion and Rings columns. '-' means no outliers of that kind were identified.

Mol	Type	Chain	Res	Link	Chirals	Torsions	Rings
2	NAG	B	1	2	-	0/6/23/26	0/1/1/1
2	NAG	B	2	2	-	2/6/23/26	0/1/1/1
2	NAG	D	1	2	-	0/6/23/26	0/1/1/1
2	NAG	D	2	2	-	2/6/23/26	0/1/1/1
2	NAG	G	1	2	-	0/6/23/26	0/1/1/1
2	NAG	G	2	2	-	2/6/23/26	0/1/1/1

There are no bond length outliers.

All (3) bond angle outliers are listed below:

Mol	Chain	Res	Type	Atoms	Z	Observed(°)	Ideal(°)
2	G	2	NAG	C2-N2-C7	2.87	126.98	122.90
2	D	2	NAG	C2-N2-C7	2.85	126.96	122.90
2	B	2	NAG	C2-N2-C7	2.84	126.95	122.90

There are no chirality outliers.

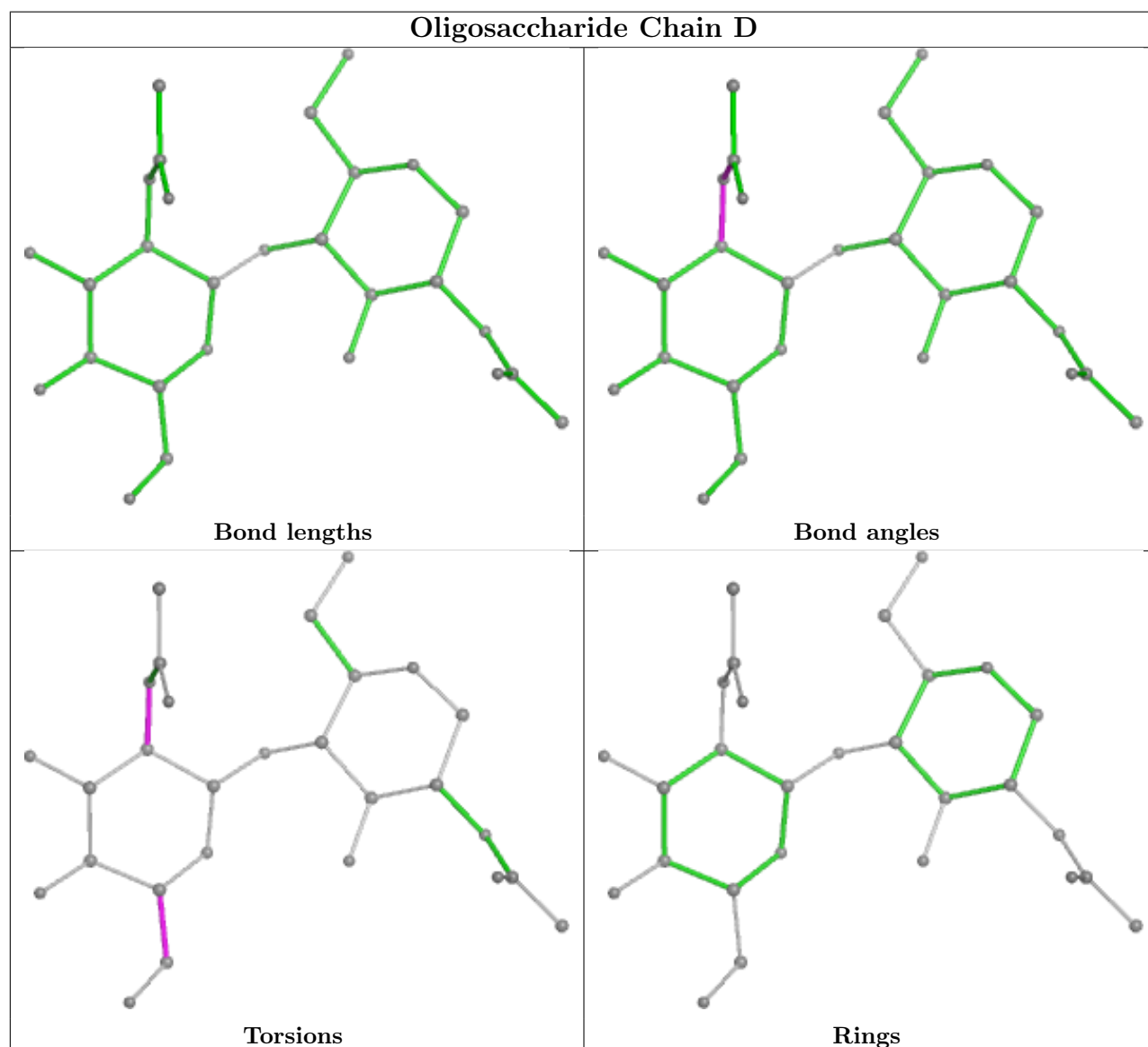
All (6) torsion outliers are listed below:

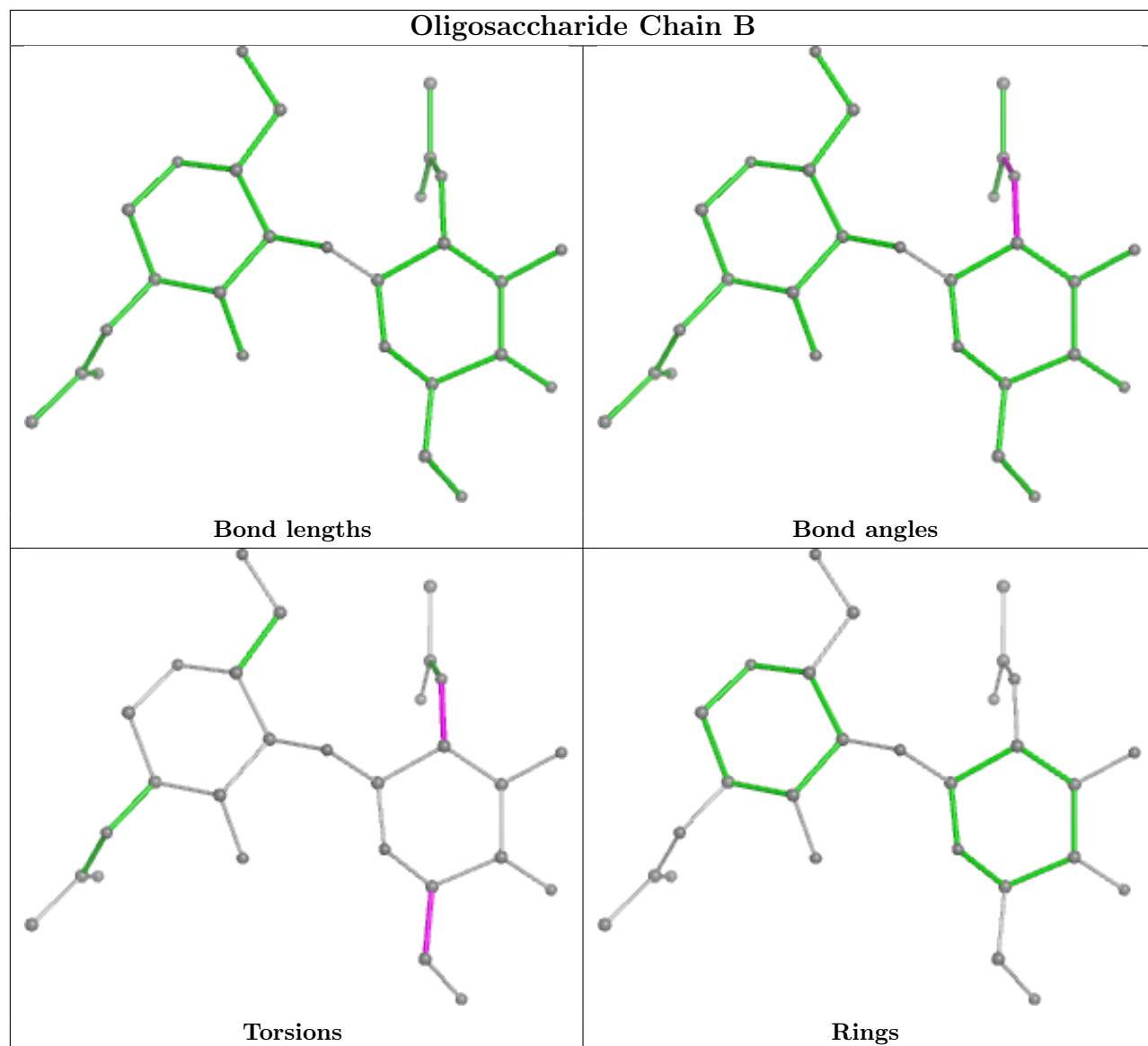
Mol	Chain	Res	Type	Atoms
2	B	2	NAG	O5-C5-C6-O6
2	G	2	NAG	O5-C5-C6-O6
2	D	2	NAG	O5-C5-C6-O6
2	D	2	NAG	C3-C2-N2-C7
2	B	2	NAG	C3-C2-N2-C7
2	G	2	NAG	C3-C2-N2-C7

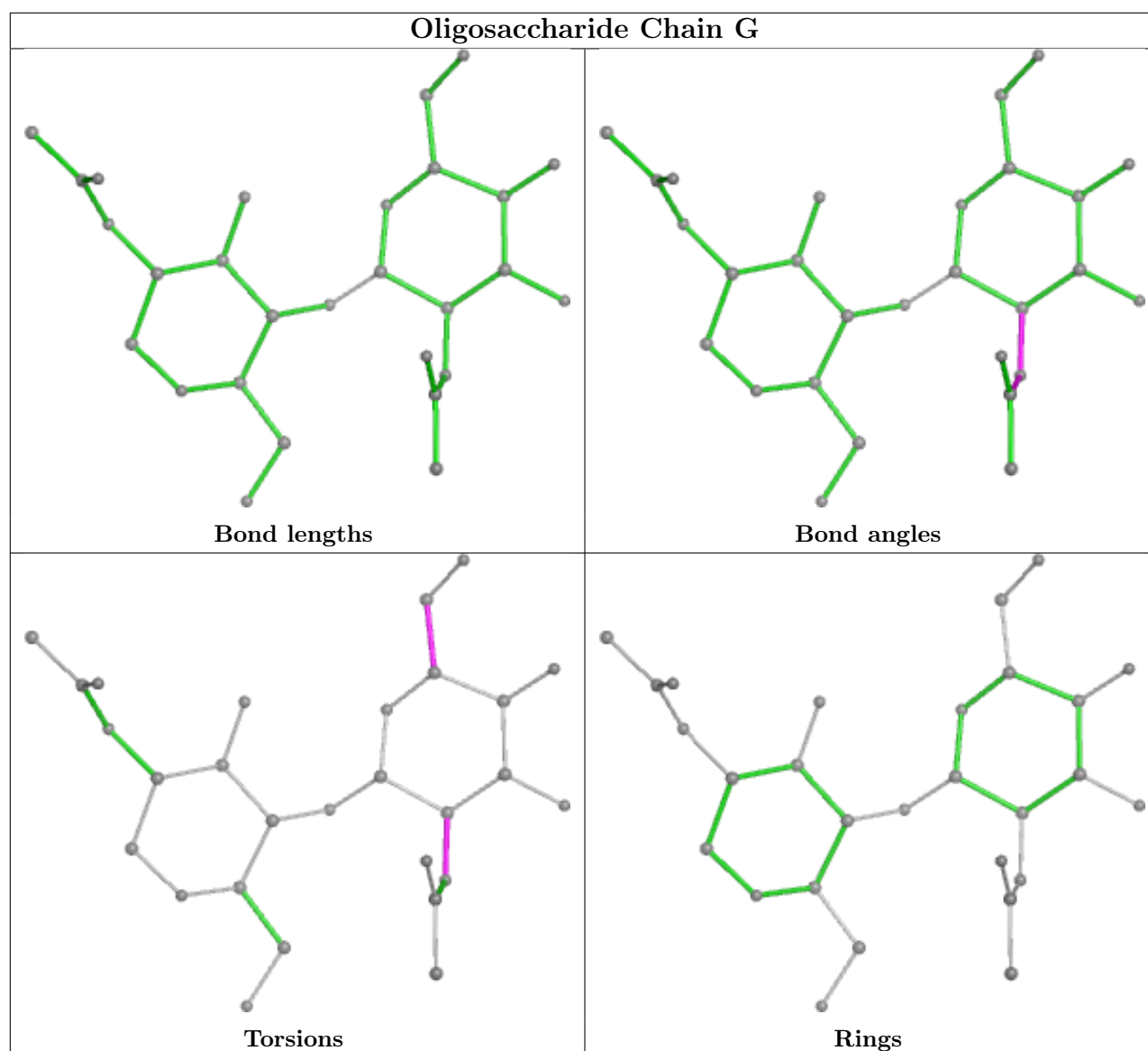
There are no ring outliers.

No monomer is involved in short contacts.

The following is a two-dimensional graphical depiction of Mogul quality analysis of bond lengths, bond angles, torsion angles, and ring geometry for oligosaccharide.







5.6 Ligand geometry [i](#)

33 ligands are modelled in this entry.

In the following table, the Counts columns list the number of bonds (or angles) for which Mogul statistics could be retrieved, the number of bonds (or angles) that are observed in the model and the number of bonds (or angles) that are defined in the Chemical Component Dictionary. The Link column lists molecule types, if any, to which the group is linked. The Z score for a bond length (or angle) is the number of standard deviations the observed value is removed from the expected value. A bond length (or angle) with $|Z| > 2$ is considered an outlier worth inspection. RMSZ is the root-mean-square of all Z scores of the bond lengths (or angles).

Mol	Type	Chain	Res	Link	Bond lengths			Bond angles		
					Counts	RMSZ	$\# Z > 2$	Counts	RMSZ	$\# Z > 2$
3	NAG	C	1408	-	14,14,15	0.80	0	17,19,21	1.00	0

Mol	Type	Chain	Res	Link	Bond lengths			Bond angles		
					Counts	RMSZ	# Z > 2	Counts	RMSZ	# Z > 2
4	5N6	C	1411	-	24,24,24	1.32	2 (8%)	29,35,35	2.46	14 (48%)
3	NAG	H	1406	1	14,14,15	0.73	0	17,19,21	0.78	0
3	NAG	C	1410	1	14,14,15	0.73	0	17,19,21	0.82	0
3	NAG	A	1406	1	14,14,15	0.74	0	17,19,21	0.80	0
3	NAG	C	1409	1	14,14,15	0.76	0	17,19,21	0.87	0
3	NAG	H	1408	1	14,14,15	0.79	0	17,19,21	1.05	1 (5%)
4	5N6	H	1411	-	24,24,24	1.31	2 (8%)	29,35,35	2.46	14 (48%)
3	NAG	H	1402	1	14,14,15	0.75	0	17,19,21	0.80	0
3	NAG	H	1403	-	14,14,15	0.72	0	17,19,21	1.12	1 (5%)
3	NAG	H	1401	1	14,14,15	0.74	0	17,19,21	0.91	1 (5%)
4	5N6	A	1411	-	24,24,24	1.32	2 (8%)	29,35,35	2.46	14 (48%)
3	NAG	A	1403	-	14,14,15	0.74	0	17,19,21	1.15	1 (5%)
3	NAG	C	1407	1	14,14,15	0.75	0	17,19,21	1.29	2 (11%)
3	NAG	C	1406	1	14,14,15	0.74	0	17,19,21	0.80	0
3	NAG	H	1407	1	14,14,15	0.72	0	17,19,21	1.17	1 (5%)
3	NAG	A	1409	1	14,14,15	0.77	0	17,19,21	0.84	0
3	NAG	C	1404	1	14,14,15	0.74	0	17,19,21	0.82	0
3	NAG	A	1405	1	14,14,15	0.77	0	17,19,21	2.19	2 (11%)
3	NAG	A	1402	1	14,14,15	0.74	0	17,19,21	0.78	0
3	NAG	H	1404	1	14,14,15	0.73	0	17,19,21	0.77	0
3	NAG	C	1401	1	14,14,15	0.72	0	17,19,21	0.85	0
3	NAG	C	1402	1	14,14,15	0.74	0	17,19,21	0.80	0
3	NAG	A	1407	-	14,14,15	0.73	0	17,19,21	1.12	1 (5%)
3	NAG	C	1405	1	14,14,15	0.79	0	17,19,21	2.20	2 (11%)
3	NAG	A	1404	1	14,14,15	0.79	0	17,19,21	1.84	3 (17%)
3	NAG	H	1410	1	14,14,15	0.73	0	17,19,21	0.83	0
3	NAG	A	1408	-	14,14,15	0.77	0	17,19,21	0.79	0
3	NAG	A	1401	1	14,14,15	0.75	0	17,19,21	0.86	0
3	NAG	H	1405	1	14,14,15	0.79	0	17,19,21	2.19	2 (11%)
3	NAG	H	1409	1	14,14,15	0.76	0	17,19,21	0.84	0
3	NAG	A	1410	1	14,14,15	0.73	0	17,19,21	0.82	0
3	NAG	C	1403	-	14,14,15	0.74	0	17,19,21	1.17	1 (5%)

In the following table, the Chirals column lists the number of chiral outliers, the number of chiral centers analysed, the number of these observed in the model and the number defined in the Chemical Component Dictionary. Similar counts are reported in the Torsion and Rings columns. '-' means no outliers of that kind were identified.

Mol	Type	Chain	Res	Link	Chirals	Torsions	Rings
3	NAG	C	1408	-	-	0/6/23/26	0/1/1/1
4	5N6	C	1411	-	-	5/23/41/41	0/1/1/1
3	NAG	H	1406	1	-	0/6/23/26	0/1/1/1
3	NAG	C	1410	1	-	1/6/23/26	0/1/1/1
3	NAG	A	1406	1	-	0/6/23/26	0/1/1/1
3	NAG	C	1409	1	-	0/6/23/26	0/1/1/1
3	NAG	H	1408	1	-	0/6/23/26	0/1/1/1
4	5N6	H	1411	-	-	5/23/41/41	0/1/1/1
3	NAG	H	1402	1	-	0/6/23/26	0/1/1/1
3	NAG	H	1403	-	-	3/6/23/26	0/1/1/1
3	NAG	H	1401	1	-	1/6/23/26	0/1/1/1
4	5N6	A	1411	-	-	5/23/41/41	0/1/1/1
3	NAG	A	1403	-	-	3/6/23/26	0/1/1/1
3	NAG	C	1407	1	-	2/6/23/26	0/1/1/1
3	NAG	C	1406	1	-	0/6/23/26	0/1/1/1
3	NAG	H	1407	1	-	2/6/23/26	0/1/1/1
3	NAG	A	1409	1	-	0/6/23/26	0/1/1/1
3	NAG	C	1404	1	-	1/6/23/26	0/1/1/1
3	NAG	A	1405	1	-	4/6/23/26	0/1/1/1
3	NAG	A	1402	1	-	0/6/23/26	0/1/1/1
3	NAG	H	1404	1	-	1/6/23/26	0/1/1/1
3	NAG	C	1401	1	-	1/6/23/26	0/1/1/1
3	NAG	C	1402	1	-	0/6/23/26	0/1/1/1
3	NAG	A	1407	-	-	2/6/23/26	0/1/1/1
3	NAG	C	1405	1	-	4/6/23/26	0/1/1/1
3	NAG	A	1404	1	-	1/6/23/26	0/1/1/1
3	NAG	H	1410	1	-	1/6/23/26	0/1/1/1
3	NAG	A	1408	-	-	0/6/23/26	0/1/1/1
3	NAG	A	1401	1	-	1/6/23/26	0/1/1/1
3	NAG	H	1405	1	-	4/6/23/26	0/1/1/1
3	NAG	H	1409	1	-	0/6/23/26	0/1/1/1
3	NAG	A	1410	1	-	1/6/23/26	0/1/1/1
3	NAG	C	1403	-	-	3/6/23/26	0/1/1/1

All (6) bond length outliers are listed below:

Mol	Chain	Res	Type	Atoms	Z	Observed(Å)	Ideal(Å)
4	A	1411	5N6	C2-C1	2.35	1.57	1.53
4	C	1411	5N6	C2-C1	2.34	1.57	1.53
4	H	1411	5N6	C2-C1	2.27	1.57	1.53
4	C	1411	5N6	O8-C8	-2.22	1.38	1.43

Continued on next page...

Continued from previous page...

Mol	Chain	Res	Type	Atoms	Z	Observed(Å)	Ideal(Å)
4	H	1411	5N6	O8-C8	-2.21	1.38	1.43
4	A	1411	5N6	O8-C8	-2.18	1.38	1.43

All (60) bond angle outliers are listed below:

Mol	Chain	Res	Type	Atoms	Z	Observed(°)	Ideal(°)
3	A	1405	NAG	C2-N2-C7	7.78	133.98	122.90
3	C	1405	NAG	C2-N2-C7	7.56	133.67	122.90
3	H	1405	NAG	C2-N2-C7	7.42	133.47	122.90
3	A	1404	NAG	C1-O5-C5	4.99	118.95	112.19
4	C	1411	5N6	O1A-C1-C2	-4.97	116.06	123.59
4	A	1411	5N6	O1A-C1-C2	-4.96	116.07	123.59
4	H	1411	5N6	O10-C10-C11	-4.96	112.84	122.06
4	A	1411	5N6	O10-C10-C11	-4.96	112.85	122.06
4	H	1411	5N6	O1A-C1-C2	-4.95	116.09	123.59
4	C	1411	5N6	O10-C10-C11	-4.93	112.90	122.06
4	A	1411	5N6	C9-C8-C7	-4.31	103.88	112.20
4	C	1411	5N6	C9-C8-C7	-4.30	103.89	112.20
4	H	1411	5N6	C9-C8-C7	-4.29	103.91	112.20
4	A	1411	5N6	C9-O9-CAG	-3.78	107.59	117.10
4	C	1411	5N6	C9-O9-CAG	-3.78	107.61	117.10
4	H	1411	5N6	C9-O9-CAG	-3.78	107.61	117.10
3	A	1404	NAG	O5-C1-C2	3.21	116.36	111.29
4	C	1411	5N6	O2-C2-C3	-3.20	104.78	109.40
3	C	1403	NAG	C2-N2-C7	3.20	127.45	122.90
4	H	1411	5N6	O2-C2-C3	-3.19	104.79	109.40
4	A	1411	5N6	O2-C2-C3	-3.13	104.87	109.40
3	A	1403	NAG	C2-N2-C7	3.09	127.31	122.90
3	A	1407	NAG	C2-N2-C7	3.09	127.31	122.90
3	A	1404	NAG	C3-C4-C5	-3.09	104.72	110.24
4	H	1411	5N6	C5-N5-C10	3.09	130.69	123.18
4	H	1411	5N6	O10-C10-N5	3.06	127.57	121.95
4	A	1411	5N6	O10-C10-N5	3.00	127.47	121.95
4	C	1411	5N6	C5-N5-C10	2.99	130.45	123.18
4	A	1411	5N6	C5-N5-C10	2.99	130.44	123.18
4	C	1411	5N6	O10-C10-N5	2.99	127.44	121.95
4	H	1411	5N6	O9-C9-C8	-2.99	101.71	108.45
4	C	1411	5N6	O9-C9-C8	-2.97	101.74	108.45
3	H	1403	NAG	C2-N2-C7	2.97	127.13	122.90
4	A	1411	5N6	O9-C9-C8	-2.97	101.75	108.45
4	A	1411	5N6	C4-C5-N5	-2.85	104.73	110.38
4	A	1411	5N6	O7-C7-C8	-2.85	101.92	108.81

Continued on next page...

Continued from previous page...

Mol	Chain	Res	Type	Atoms	Z	Observed(°)	Ideal(°)
4	C	1411	5N6	O7-C7-C8	-2.85	101.93	108.81
4	H	1411	5N6	C4-C5-N5	-2.85	104.74	110.38
4	H	1411	5N6	O7-C7-C8	-2.85	101.93	108.81
4	C	1411	5N6	C4-C5-N5	-2.84	104.76	110.38
3	H	1407	NAG	C2-N2-C7	2.84	126.94	122.90
3	H	1405	NAG	C8-C7-N2	2.81	120.86	116.10
3	C	1407	NAG	C1-O5-C5	2.81	115.99	112.19
3	C	1405	NAG	C8-C7-N2	2.79	120.81	116.10
3	C	1407	NAG	C2-N2-C7	2.71	126.77	122.90
4	A	1411	5N6	O6-C6-C5	-2.69	107.15	109.78
4	C	1411	5N6	O6-C6-C5	-2.68	107.17	109.78
4	H	1411	5N6	C4-C5-C6	-2.62	102.46	109.10
4	C	1411	5N6	C4-C5-C6	-2.62	102.47	109.10
4	A	1411	5N6	C4-C5-C6	-2.62	102.48	109.10
4	H	1411	5N6	O6-C6-C5	-2.61	107.23	109.78
4	C	1411	5N6	O6-C6-C7	2.55	111.22	107.29
3	H	1408	NAG	C1-O5-C5	2.53	115.62	112.19
3	A	1405	NAG	C8-C7-N2	2.53	120.39	116.10
4	A	1411	5N6	O6-C6-C7	2.53	111.19	107.29
4	H	1411	5N6	O6-C6-C7	2.45	111.06	107.29
3	H	1401	NAG	C1-O5-C5	2.20	115.17	112.19
4	A	1411	5N6	C11-C10-N5	2.11	119.67	116.10
4	C	1411	5N6	C11-C10-N5	2.10	119.66	116.10
4	H	1411	5N6	C11-C10-N5	2.06	119.59	116.10

There are no chirality outliers.

All (51) torsion outliers are listed below:

Mol	Chain	Res	Type	Atoms
4	A	1411	5N6	C7-C8-C9-O9
4	A	1411	5N6	O8-C8-C9-O9
4	C	1411	5N6	C7-C8-C9-O9
4	C	1411	5N6	O8-C8-C9-O9
4	H	1411	5N6	C7-C8-C9-O9
4	H	1411	5N6	O8-C8-C9-O9
4	A	1411	5N6	CAF-CAG-O9-C9
4	C	1411	5N6	CAF-CAG-O9-C9
4	H	1411	5N6	CAF-CAG-O9-C9
4	H	1411	5N6	OBJ-CAG-O9-C9
4	C	1411	5N6	OBJ-CAG-O9-C9
4	A	1411	5N6	OBJ-CAG-O9-C9
3	A	1405	NAG	C8-C7-N2-C2

Continued on next page...

Continued from previous page...

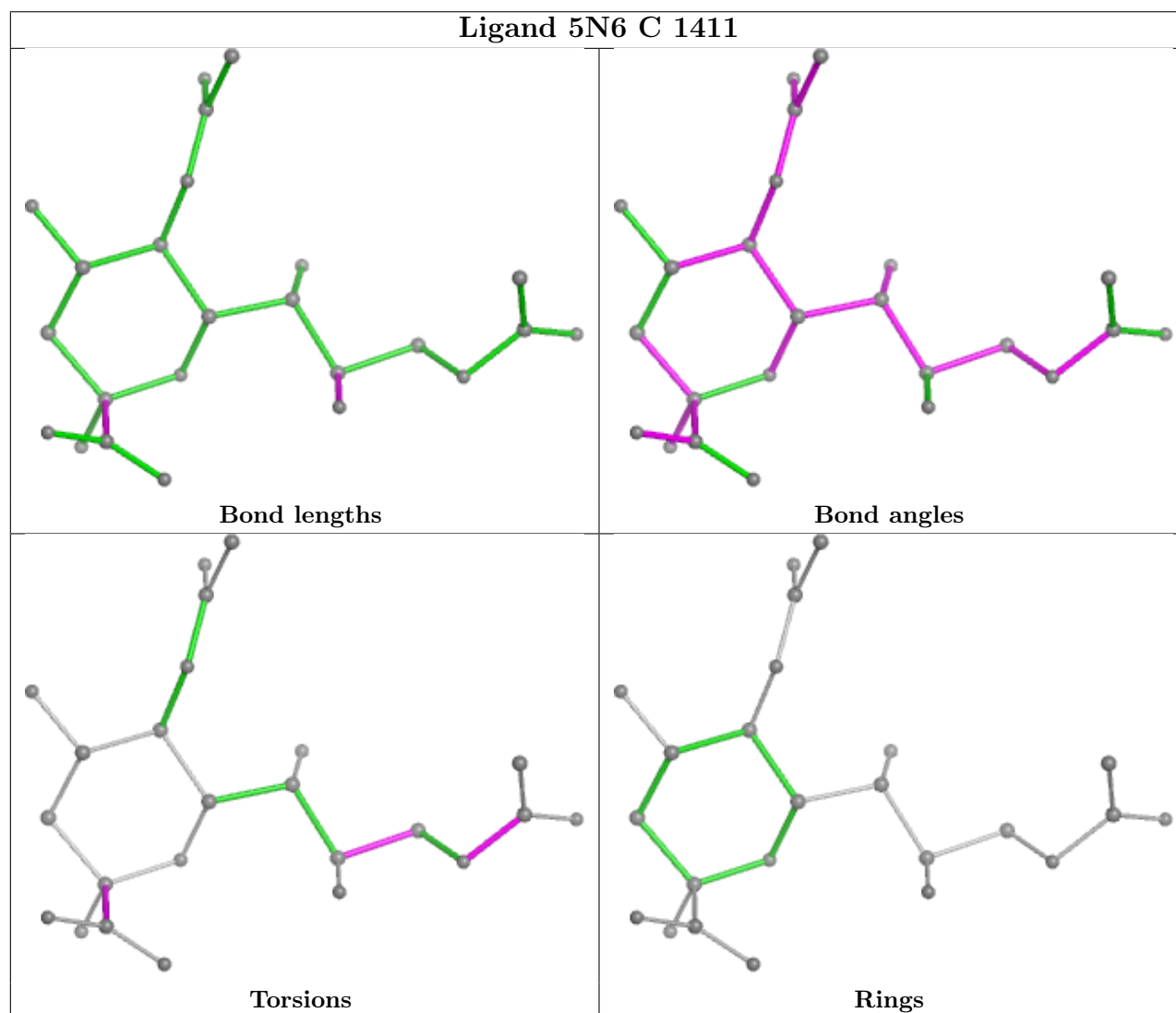
Mol	Chain	Res	Type	Atoms
3	A	1405	NAG	O7-C7-N2-C2
3	C	1405	NAG	C8-C7-N2-C2
3	C	1405	NAG	O7-C7-N2-C2
3	H	1405	NAG	C8-C7-N2-C2
3	H	1405	NAG	O7-C7-N2-C2
3	A	1404	NAG	O5-C5-C6-O6
3	H	1404	NAG	O5-C5-C6-O6
3	C	1405	NAG	O5-C5-C6-O6
3	C	1404	NAG	O5-C5-C6-O6
3	A	1405	NAG	O5-C5-C6-O6
3	A	1401	NAG	O5-C5-C6-O6
3	C	1401	NAG	O5-C5-C6-O6
3	H	1405	NAG	O5-C5-C6-O6
3	H	1407	NAG	O5-C5-C6-O6
3	C	1403	NAG	O5-C5-C6-O6
3	A	1407	NAG	O5-C5-C6-O6
3	H	1403	NAG	O5-C5-C6-O6
3	A	1403	NAG	O5-C5-C6-O6
3	H	1401	NAG	O5-C5-C6-O6
3	A	1410	NAG	O5-C5-C6-O6
3	C	1407	NAG	O5-C5-C6-O6
3	C	1410	NAG	O5-C5-C6-O6
3	H	1410	NAG	O5-C5-C6-O6
4	A	1411	5N6	O1A-C1-C2-O6
4	C	1411	5N6	O1A-C1-C2-O6
4	H	1411	5N6	O1A-C1-C2-O6
3	A	1403	NAG	C3-C2-N2-C7
3	A	1407	NAG	C3-C2-N2-C7
3	C	1403	NAG	C3-C2-N2-C7
3	C	1407	NAG	C3-C2-N2-C7
3	H	1407	NAG	C3-C2-N2-C7
3	C	1403	NAG	C1-C2-N2-C7
3	A	1403	NAG	C1-C2-N2-C7
3	A	1405	NAG	C3-C2-N2-C7
3	C	1405	NAG	C3-C2-N2-C7
3	H	1403	NAG	C3-C2-N2-C7
3	H	1405	NAG	C3-C2-N2-C7
3	H	1403	NAG	C1-C2-N2-C7

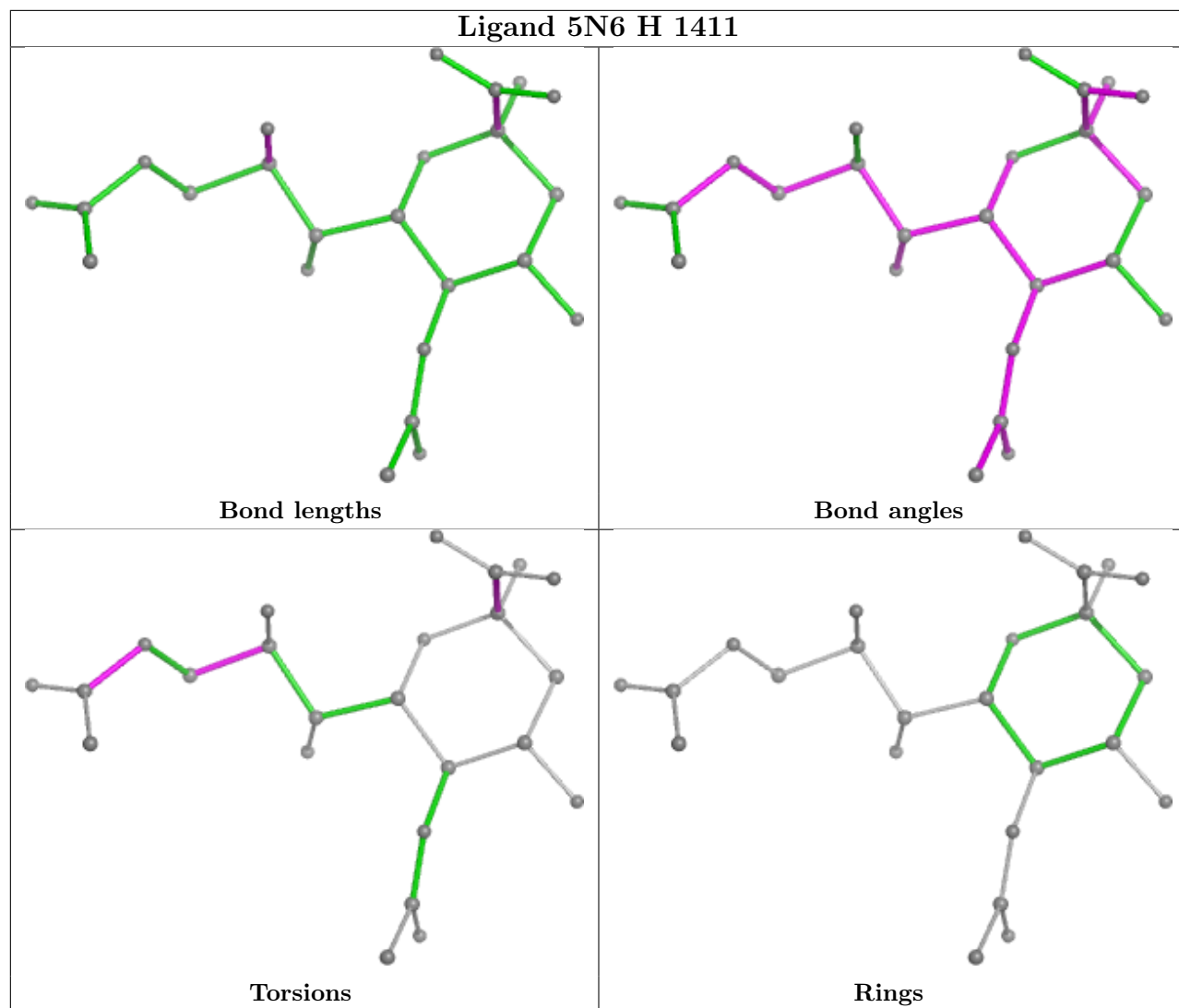
There are no ring outliers.

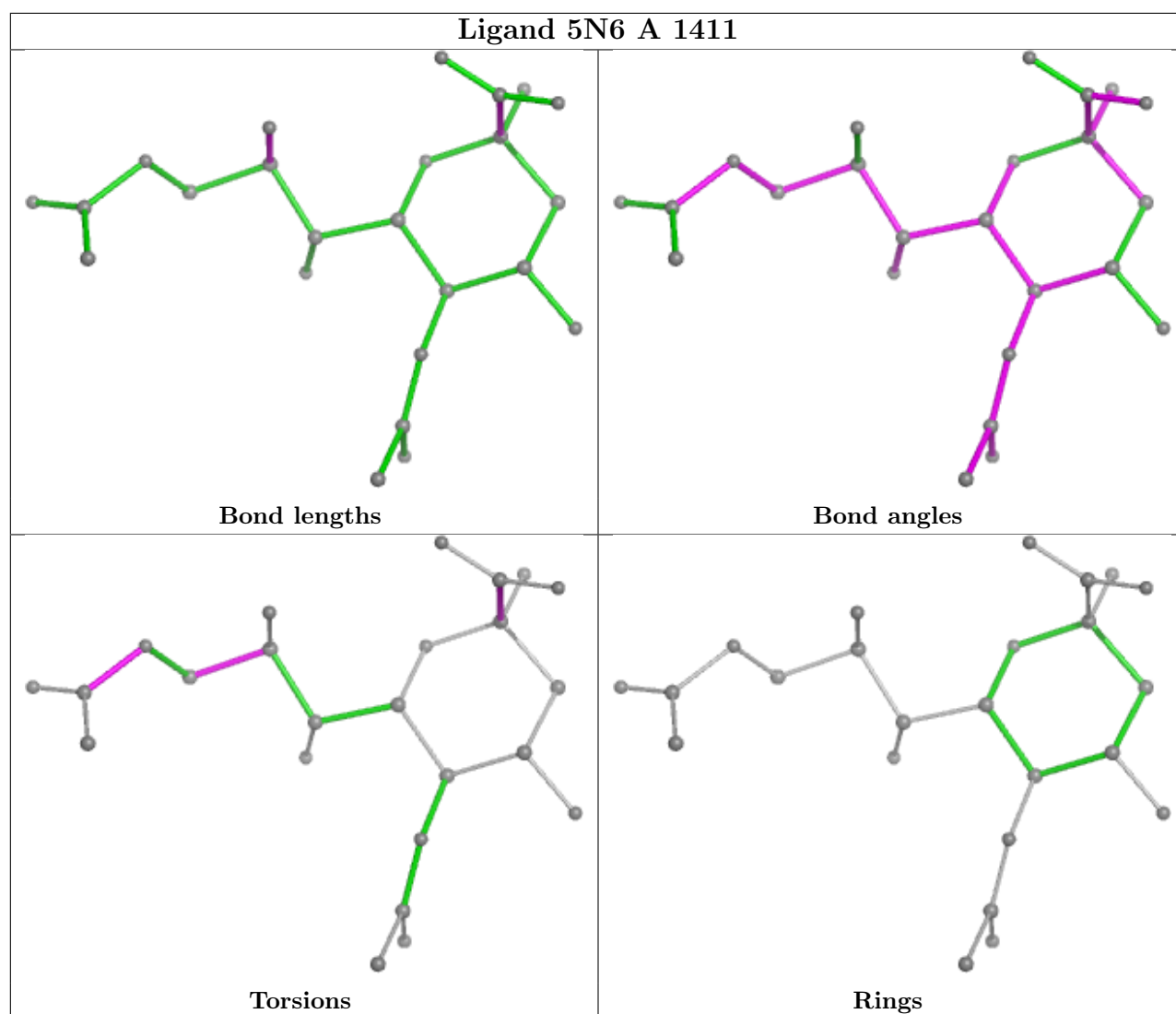
2 monomers are involved in 2 short contacts:

Mol	Chain	Res	Type	Clashes	Symm-Clashes
3	C	1401	NAG	1	0
3	A	1404	NAG	1	0

The following is a two-dimensional graphical depiction of Mogul quality analysis of bond lengths, bond angles, torsion angles, and ring geometry for all instances of the Ligand of Interest. In addition, ligands with molecular weight > 250 and outliers as shown on the validation Tables will also be included. For torsion angles, if less than 5% of the Mogul distribution of torsion angles is within 10 degrees of the torsion angle in question, then that torsion angle is considered an outlier. Any bond that is central to one or more torsion angles identified as an outlier by Mogul will be highlighted in the graph. For rings, the root-mean-square deviation (RMSD) between the ring in question and similar rings identified by Mogul is calculated over all ring torsion angles. If the average RMSD is greater than 60 degrees and the minimal RMSD between the ring in question and any Mogul-identified rings is also greater than 60 degrees, then that ring is considered an outlier. The outliers are highlighted in purple. The color gray indicates Mogul did not find sufficient equivalents in the CSD to analyse the geometry.







5.7 Other polymers [i](#)

There are no such residues in this entry.

5.8 Polymer linkage issues [i](#)

There are no chain breaks in this entry.

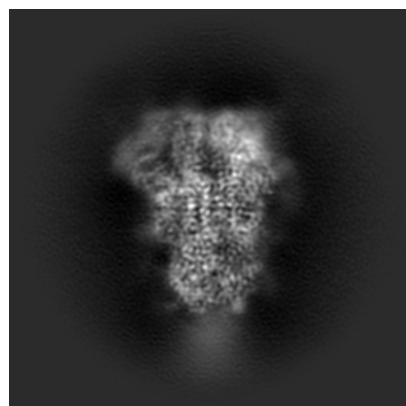
6 Map visualisation [i](#)

This section contains visualisations of the EMDB entry EMD-53680. These allow visual inspection of the internal detail of the map and identification of artifacts.

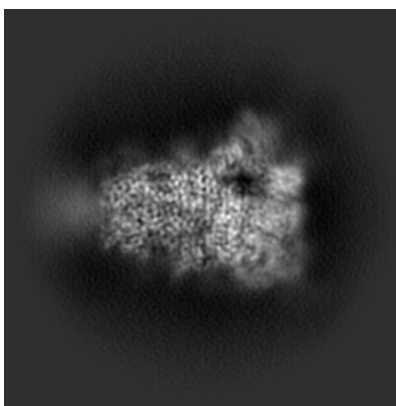
Images derived from a raw map, generated by summing the deposited half-maps, are presented below the corresponding image components of the primary map to allow further visual inspection and comparison with those of the primary map.

6.1 Orthogonal projections [i](#)

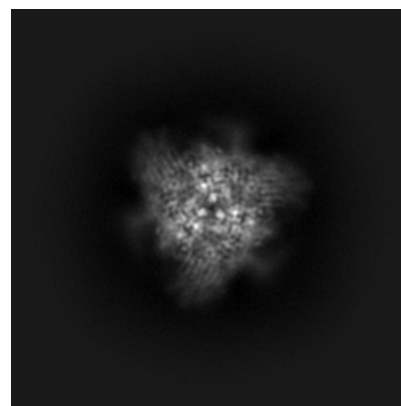
6.1.1 Primary map



X

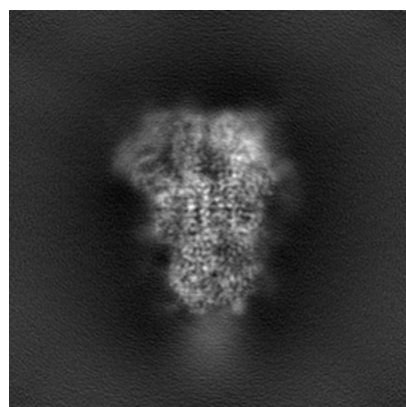


Y

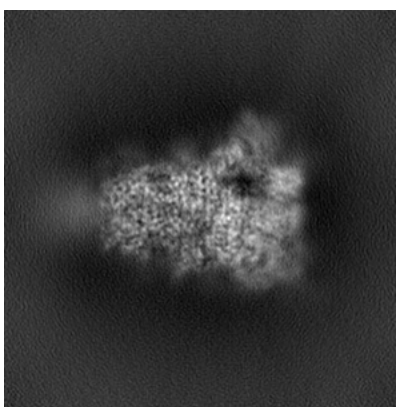


Z

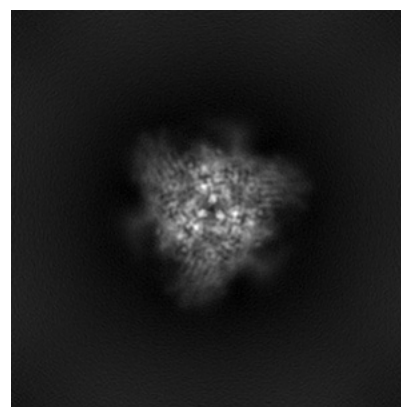
6.1.2 Raw map



X



Y

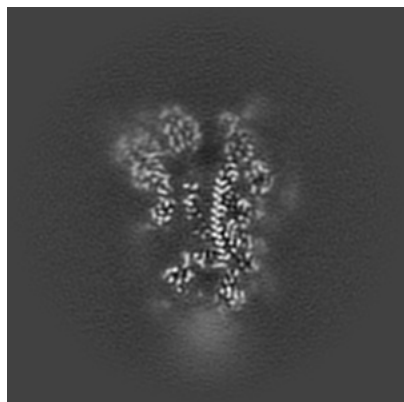


Z

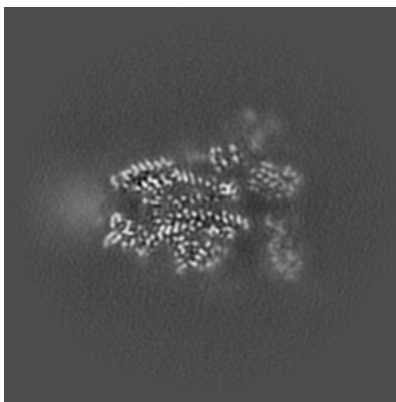
The images above show the map projected in three orthogonal directions.

6.2 Central slices [i](#)

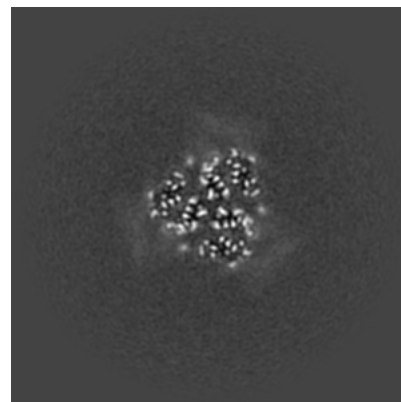
6.2.1 Primary map



X Index: 126

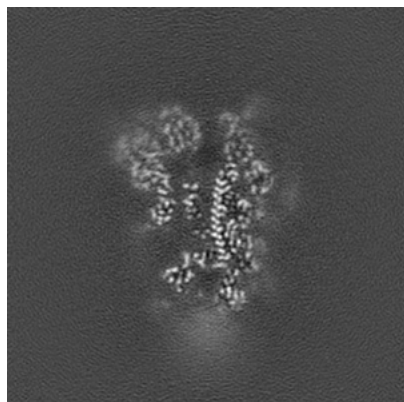


Y Index: 126

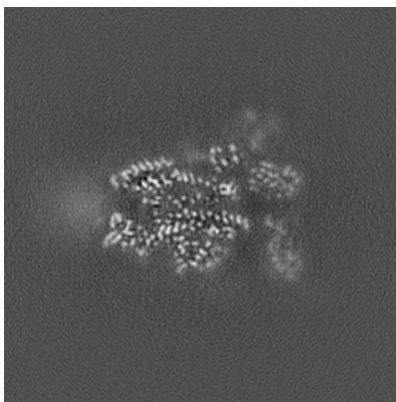


Z Index: 126

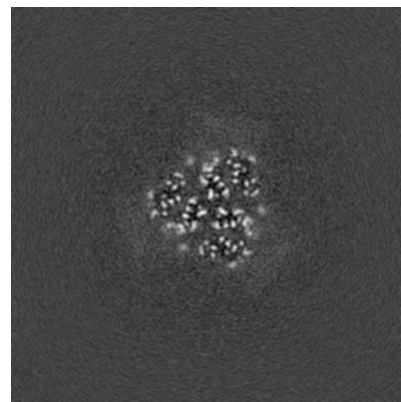
6.2.2 Raw map



X Index: 126



Y Index: 126

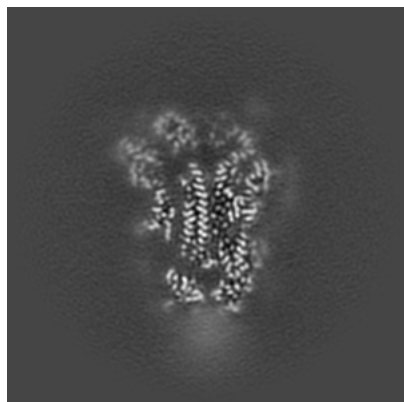


Z Index: 126

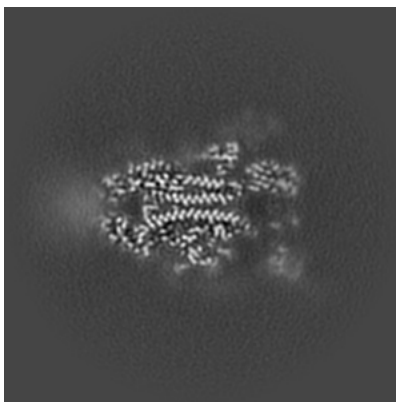
The images above show central slices of the map in three orthogonal directions.

6.3 Largest variance slices [i](#)

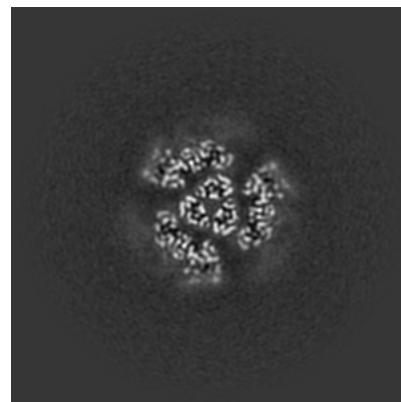
6.3.1 Primary map



X Index: 130

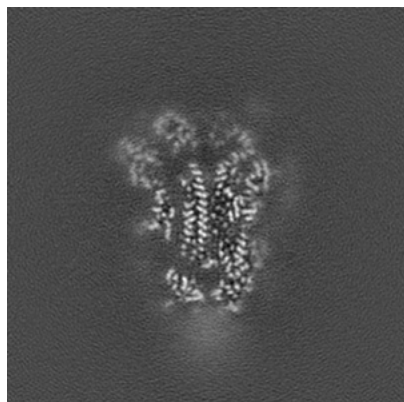


Y Index: 123

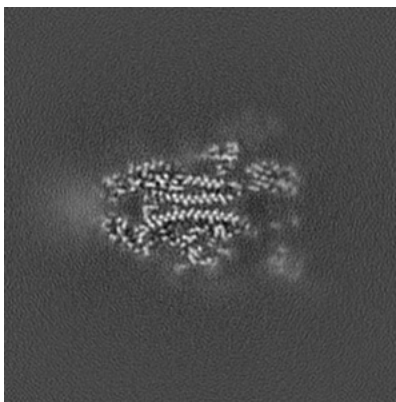


Z Index: 142

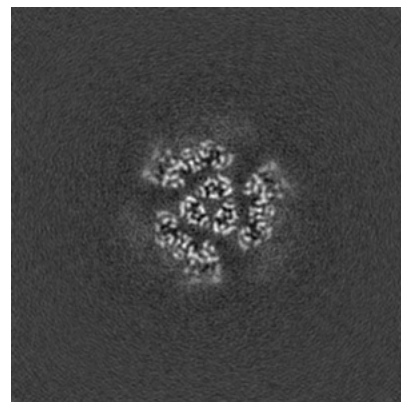
6.3.2 Raw map



X Index: 130



Y Index: 123

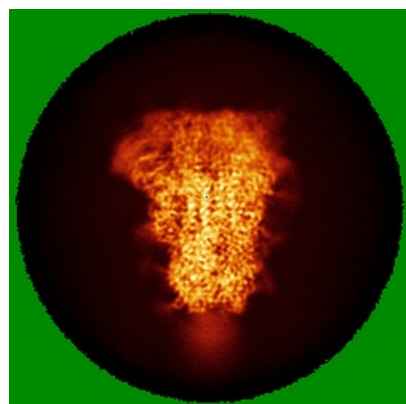


Z Index: 142

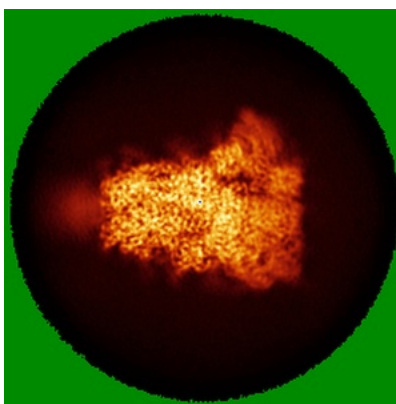
The images above show the largest variance slices of the map in three orthogonal directions.

6.4 Orthogonal standard-deviation projections (False-color) [i](#)

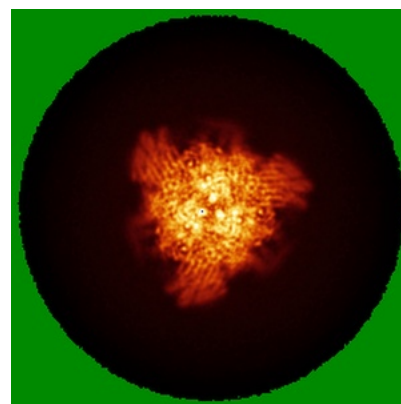
6.4.1 Primary map



X

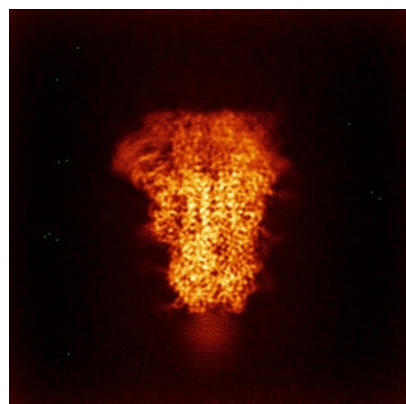


Y

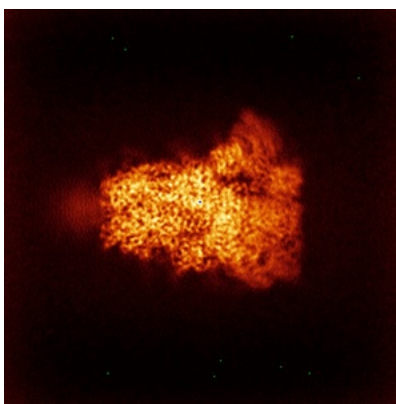


Z

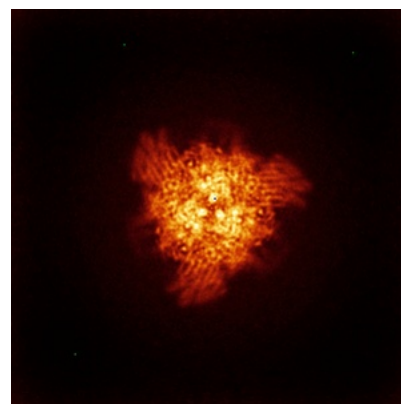
6.4.2 Raw map



X



Y

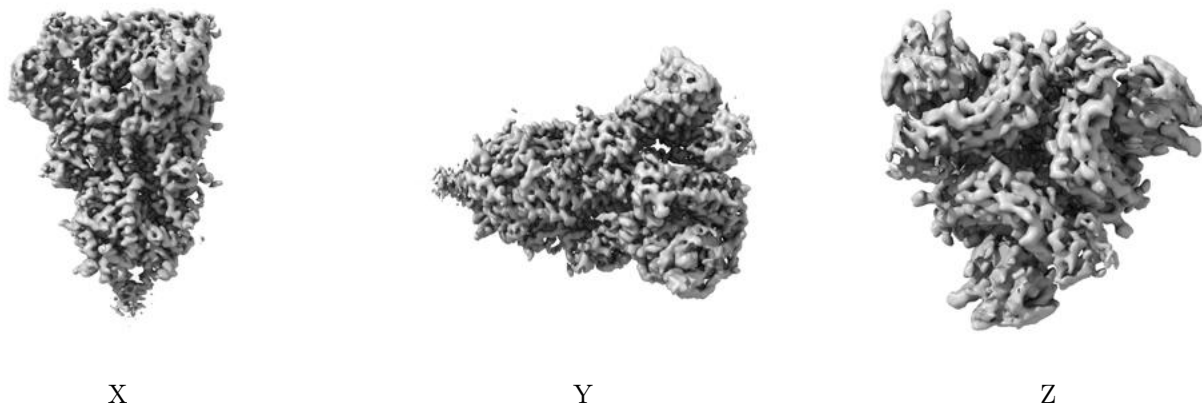


Z

The images above show the map standard deviation projections with false color in three orthogonal directions. Minimum values are shown in green, max in blue, and dark to light orange shades represent small to large values respectively.

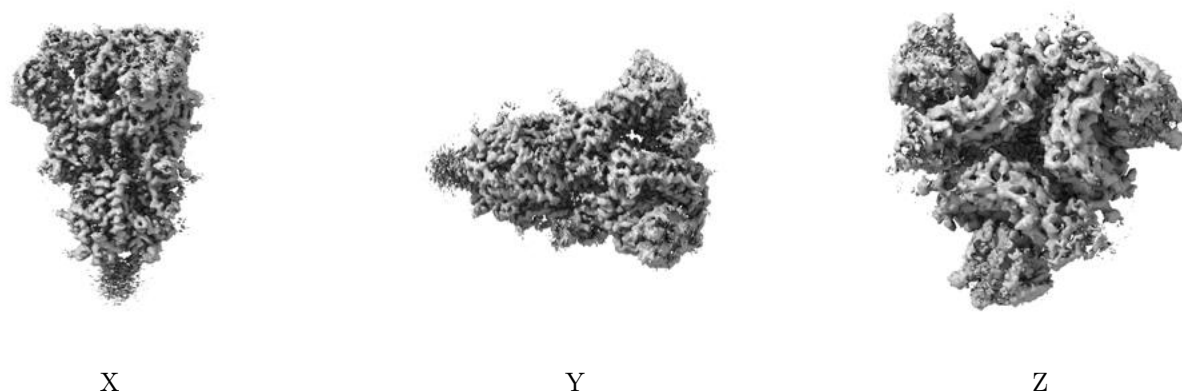
6.5 Orthogonal surface views [i](#)

6.5.1 Primary map



The images above show the 3D surface view of the map at the recommended contour level 0.0878. These images, in conjunction with the slice images, may facilitate assessment of whether an appropriate contour level has been provided.

6.5.2 Raw map



These images show the 3D surface of the raw map. The raw map's contour level was selected so that its surface encloses the same volume as the primary map does at its recommended contour level.

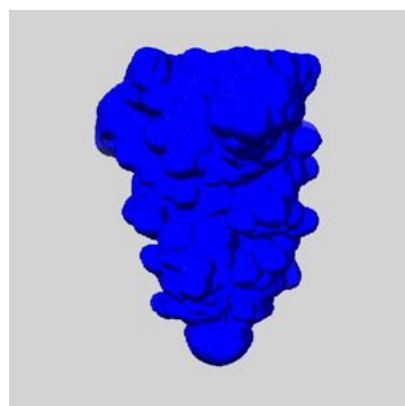
6.6 Mask visualisation [i](#)

This section shows the 3D surface view of the primary map at 50% transparency overlaid with the specified mask at 0% transparency

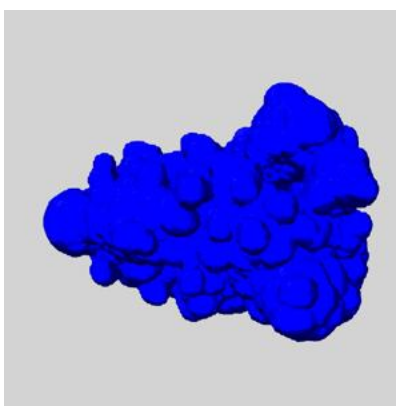
A mask typically either:

- Encompasses the whole structure
- Separates out a domain, a functional unit, a monomer or an area of interest from a larger structure

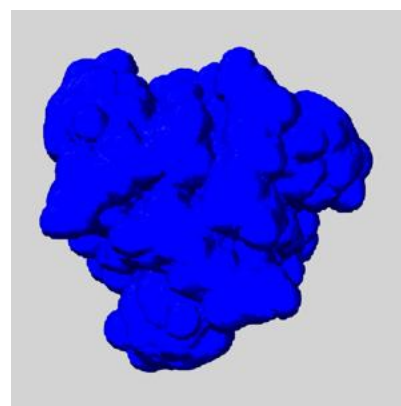
6.6.1 emd_53680_msk_1.map [i](#)



X



Y

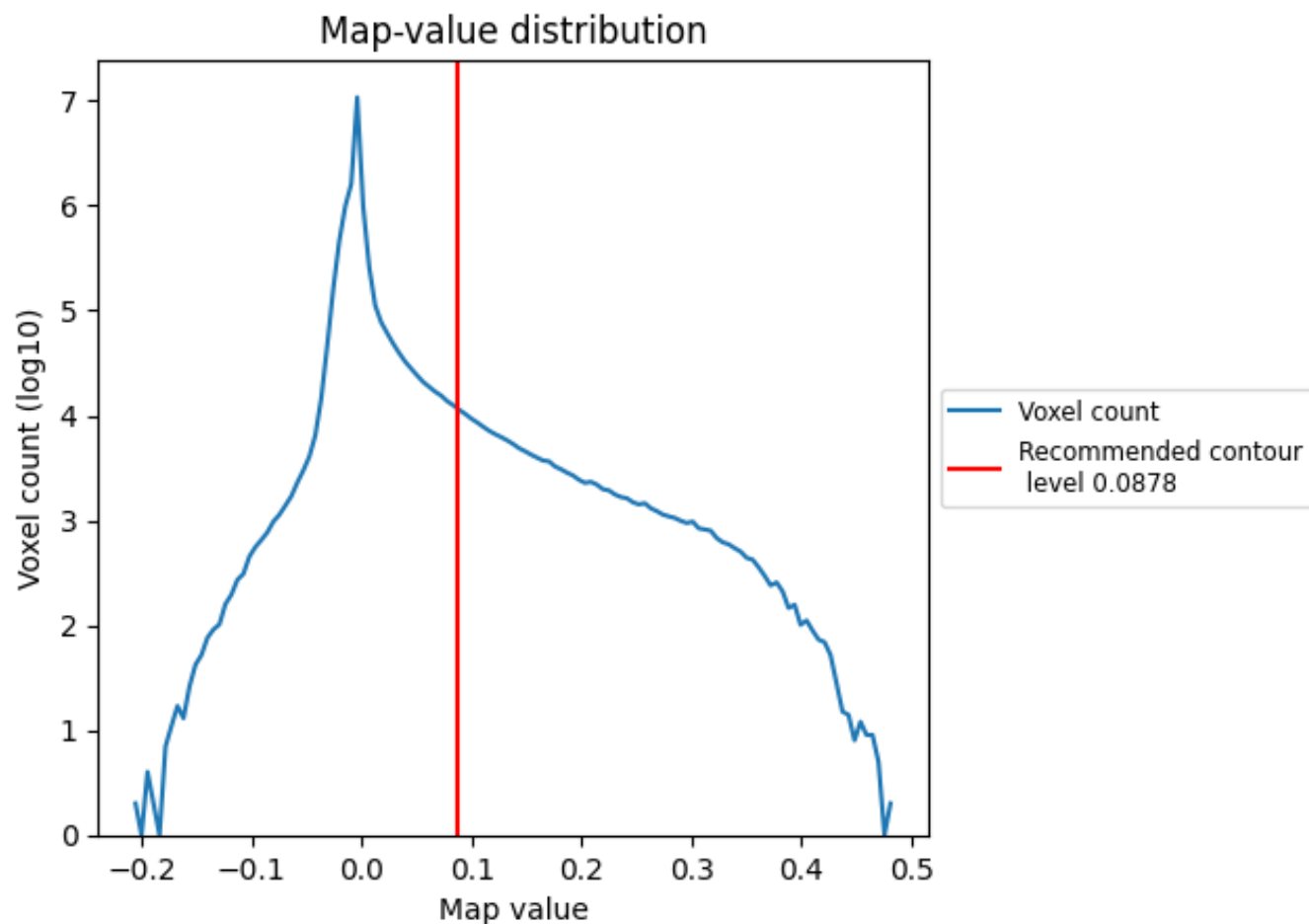


Z

7 Map analysis [i](#)

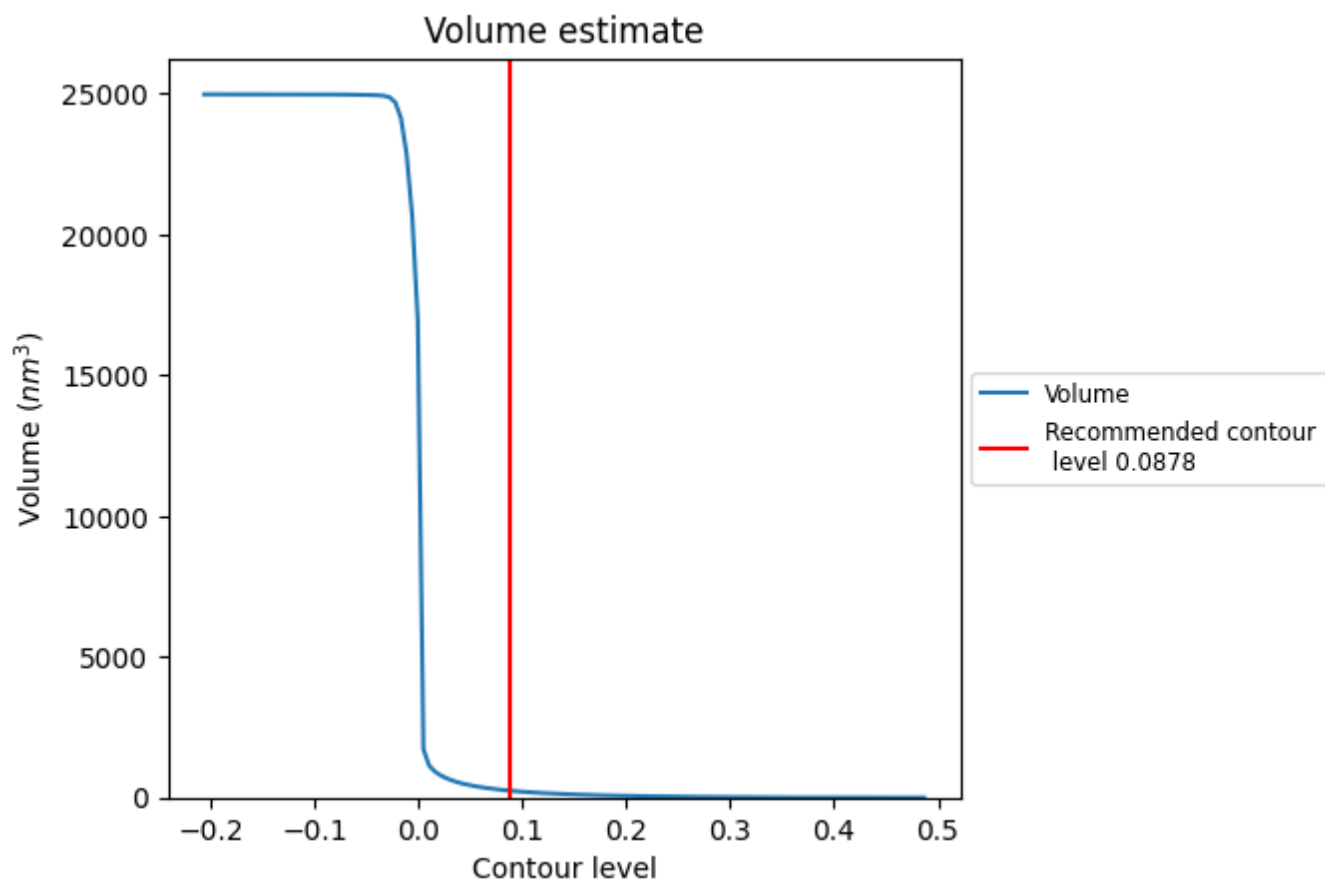
This section contains the results of statistical analysis of the map.

7.1 Map-value distribution [i](#)



The map-value distribution is plotted in 128 intervals along the x-axis. The y-axis is logarithmic. A spike in this graph at zero usually indicates that the volume has been masked.

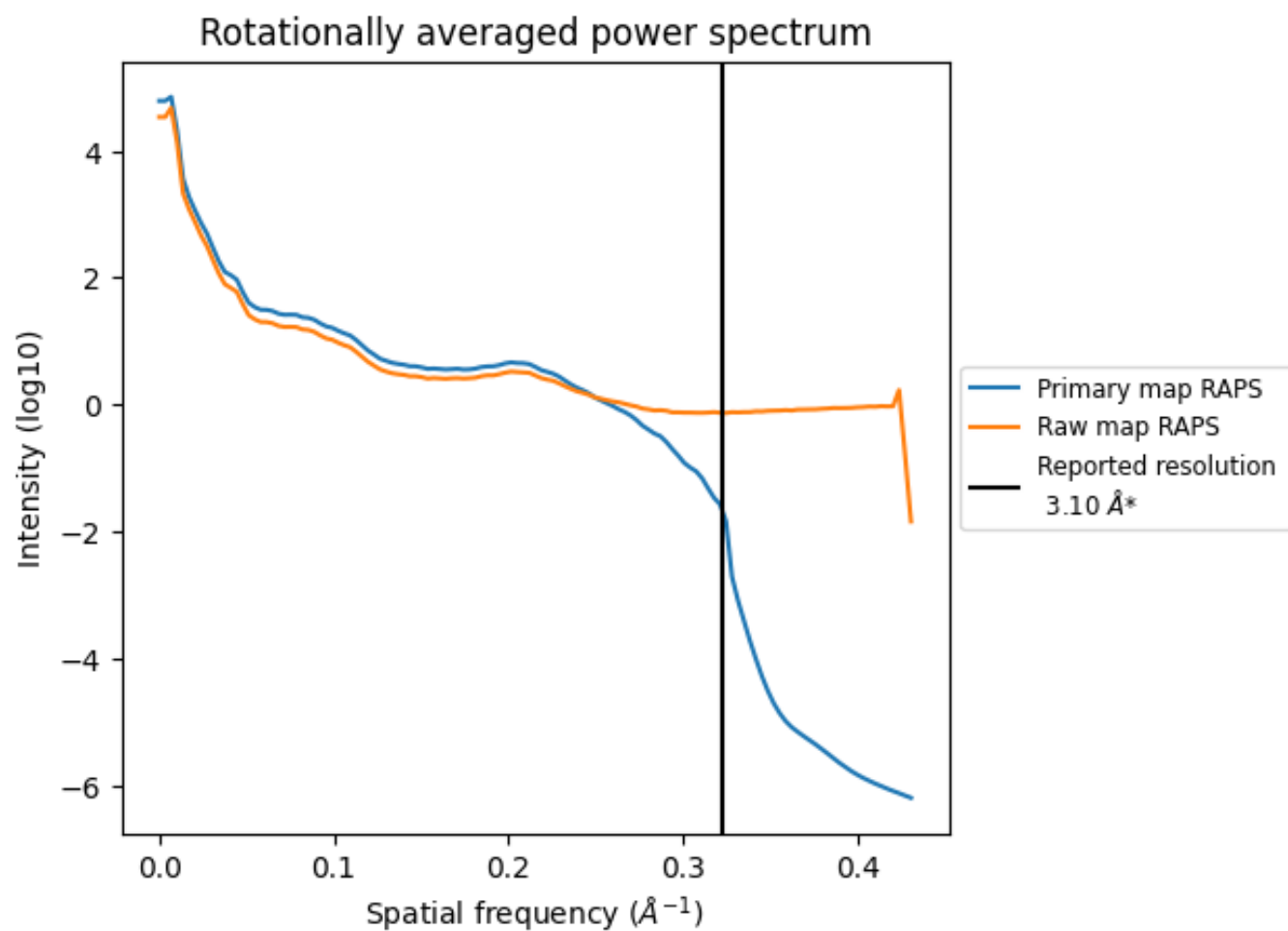
7.2 Volume estimate [i](#)



The volume at the recommended contour level is 245 nm³; this corresponds to an approximate mass of 222 kDa.

The volume estimate graph shows how the enclosed volume varies with the contour level. The recommended contour level is shown as a vertical line and the intersection between the line and the curve gives the volume of the enclosed surface at the given level.

7.3 Rotationally averaged power spectrum ⓘ

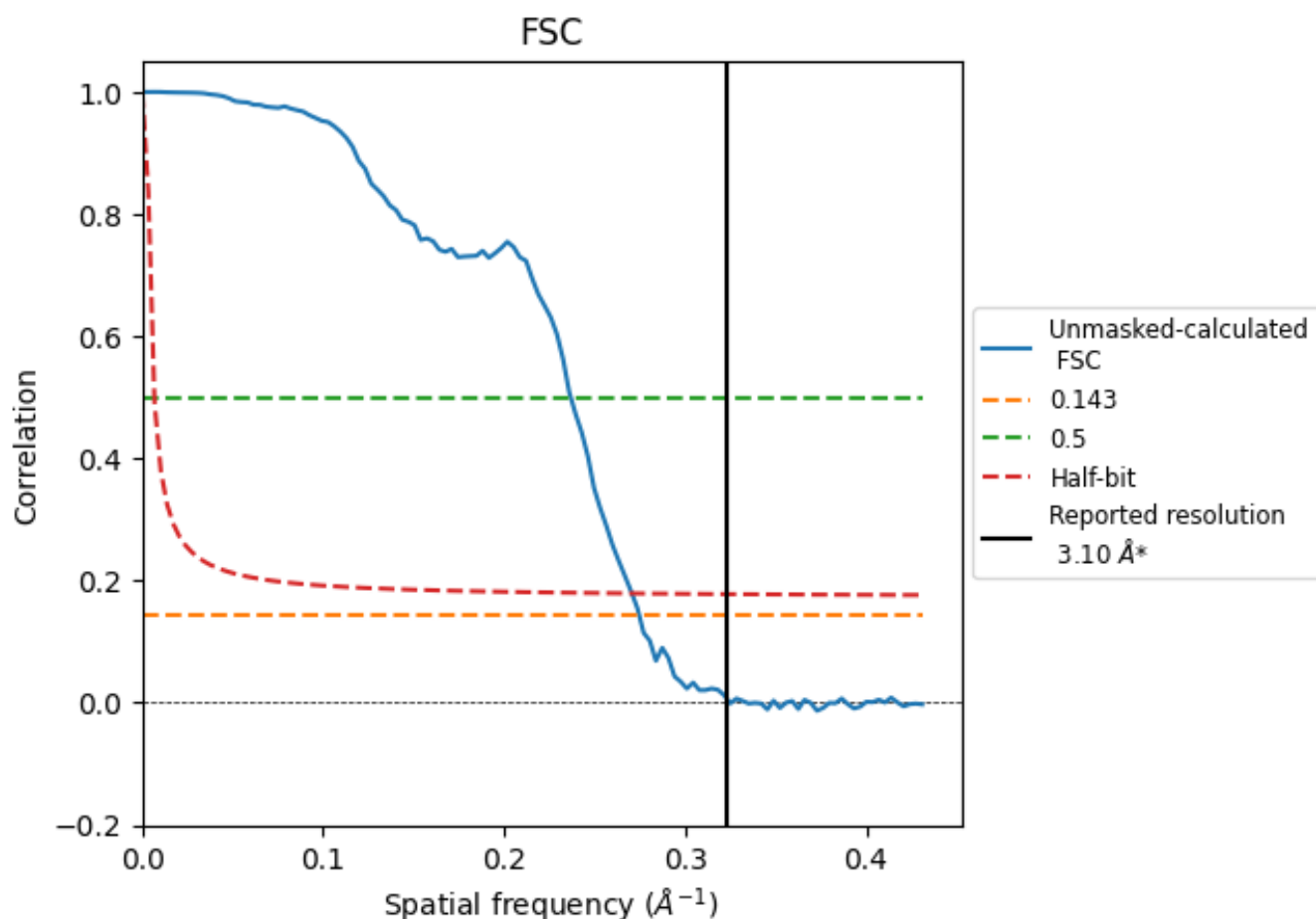


*Reported resolution corresponds to spatial frequency of 0.323 \AA^{-1}

8 Fourier-Shell correlation [i](#)

Fourier-Shell Correlation (FSC) is the most commonly used method to estimate the resolution of single-particle and subtomogram-averaged maps. The shape of the curve depends on the imposed symmetry, mask and whether or not the two 3D reconstructions used were processed from a common reference. The reported resolution is shown as a black line. A curve is displayed for the half-bit criterion in addition to lines showing the 0.143 gold standard cut-off and 0.5 cut-off.

8.1 FSC [i](#)



*Reported resolution corresponds to spatial frequency of 0.323 \AA^{-1}

8.2 Resolution estimates [i](#)

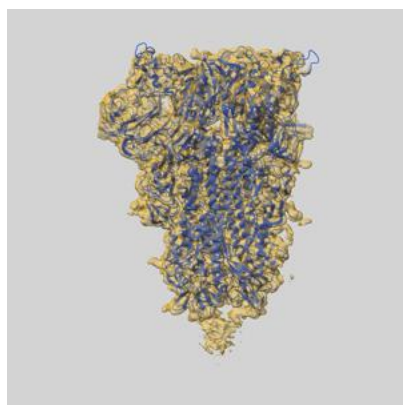
Resolution estimate (Å)	Estimation criterion (FSC cut-off)		
	0.143	0.5	Half-bit
Reported by author	3.10	-	-
Author-provided FSC curve	-	-	-
Unmasked-calculated*	3.64	4.22	3.70

*Resolution estimate based on FSC curve calculated by comparison of deposited half-maps. The value from deposited half-maps intersecting FSC 0.143 CUT-OFF 3.64 differs from the reported value 3.1 by more than 10 %

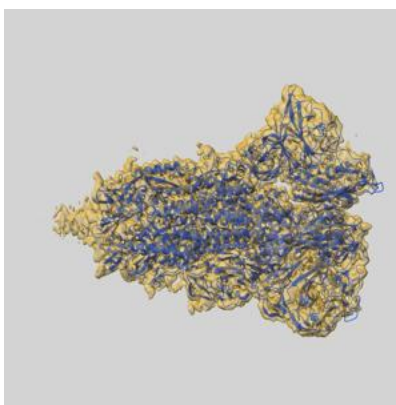
9 Map-model fit [i](#)

This section contains information regarding the fit between EMDB map EMD-53680 and PDB model 9R6P. Per-residue inclusion information can be found in section [3](#) on page [12](#).

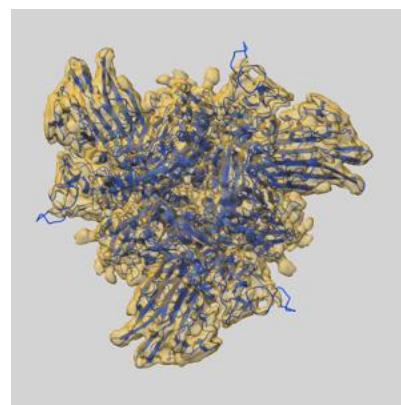
9.1 Map-model overlay [i](#)



X



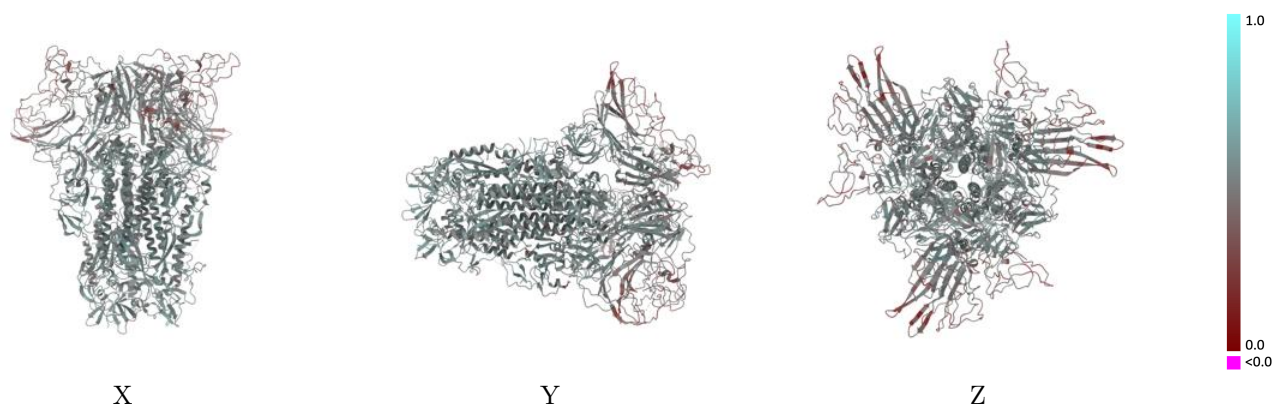
Y



Z

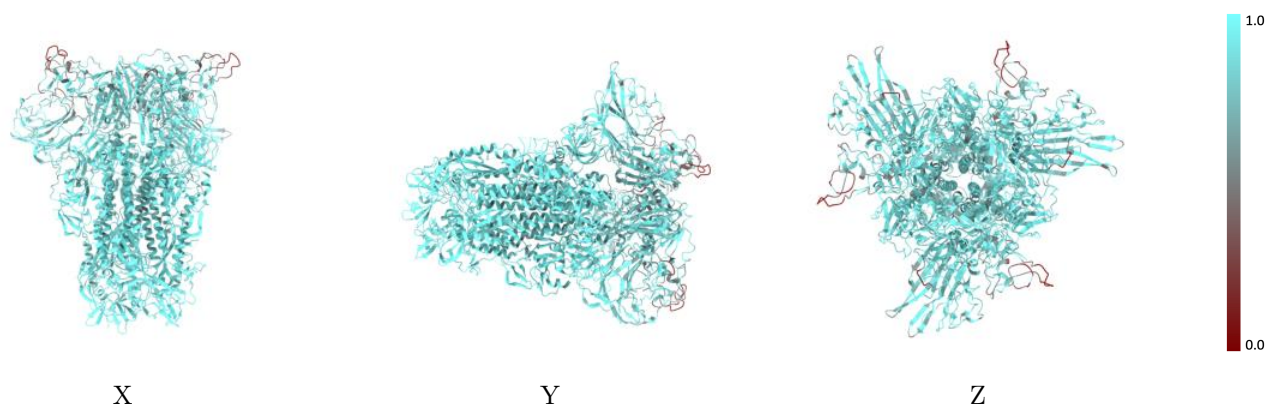
The images above show the 3D surface view of the map at the recommended contour level 0.0878 at 50% transparency in yellow overlaid with a ribbon representation of the model coloured in blue. These images allow for the visual assessment of the quality of fit between the atomic model and the map.

9.2 Q-score mapped to coordinate model [i](#)



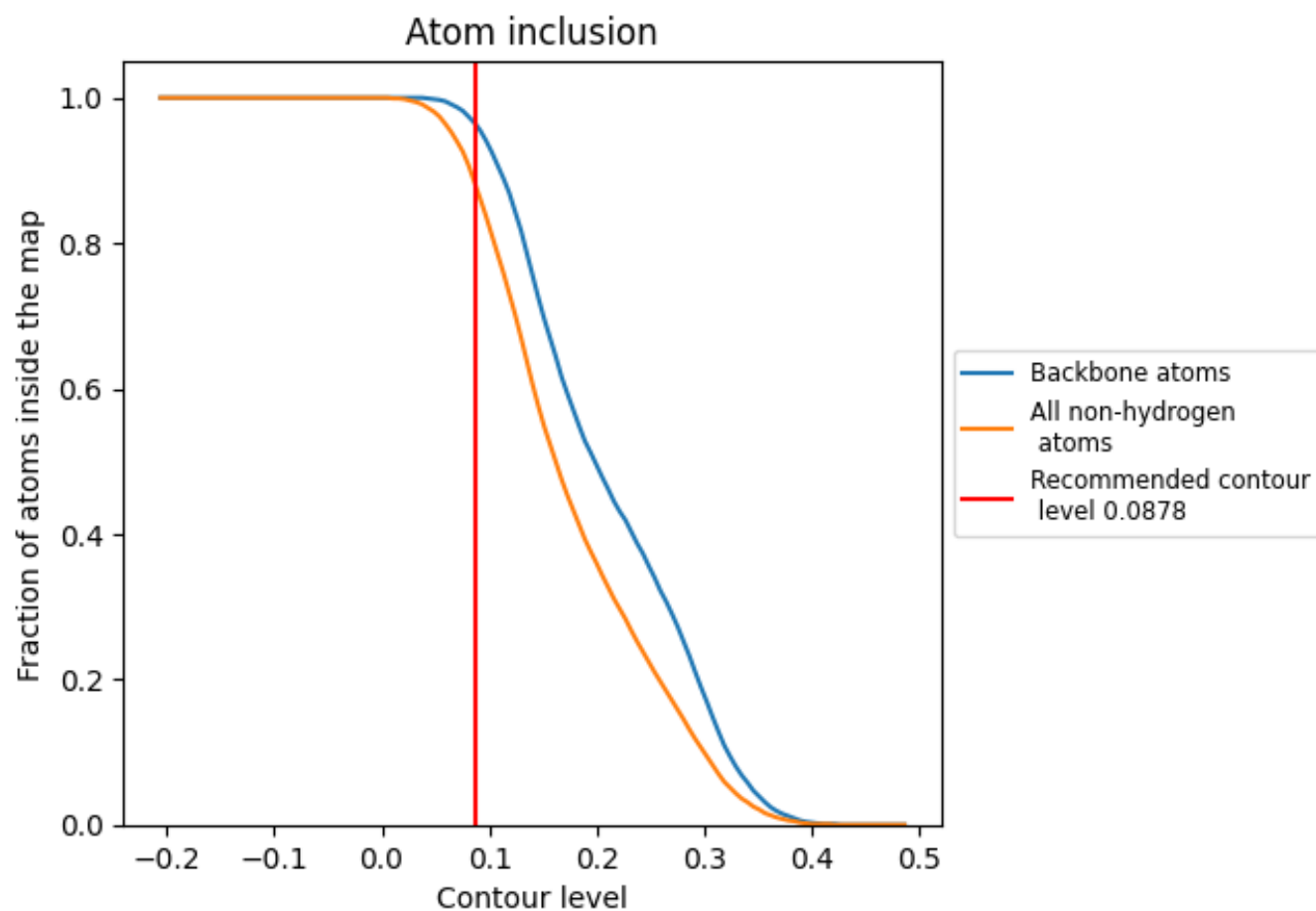
The images above show the model with each residue coloured according to its Q-score. This shows their resolvability in the map with higher Q-score values reflecting better resolvability. Please note: Q-score is calculating the resolvability of atoms, and thus high values are only expected at resolutions at which atoms can be resolved. Low Q-score values may therefore be expected for many entries.

9.3 Atom inclusion mapped to coordinate model [i](#)



The images above show the model with each residue coloured according to its atom inclusion. This shows to what extent they are inside the map at the recommended contour level (0.0878).

9.4 Atom inclusion [i](#)



At the recommended contour level, 96% of all backbone atoms, 88% of all non-hydrogen atoms, are inside the map.

9.5 Map-model fit summary ⓘ

The table lists the average atom inclusion at the recommended contour level (0.0878) and Q-score for the entire model and for each chain.

Chain	Atom inclusion	Q-score
All	<div><div></div>0.8780</div>	<div><div></div>0.4950</div>
A	<div><div></div>0.8800</div>	<div><div></div>0.4960</div>
B	<div><div></div>0.1430</div>	<div><div></div>0.1730</div>
C	<div><div></div>0.8810</div>	<div><div></div>0.4970</div>
D	<div><div></div>0.1430</div>	<div><div></div>0.1820</div>
G	<div><div></div>0.1430</div>	<div><div></div>0.1840</div>
H	<div><div></div>0.8790</div>	<div><div></div>0.4970</div>

1.0

0.0

<0.0