



## Full wwPDB X-ray Structure Validation Report ⓘ

Jun 18, 2024 – 04:35 AM EDT

PDB ID : 5QRE  
Title : PanDDA analysis group deposition – Crystal Structure of human ALAS2A in complex with Z117233350  
Authors : Bezerra, G.A.; Foster, W.; Bailey, H.; Shrestha, L.; Krojer, T.; Talon, R.; Brandao-Neto, J.; Douangamath, A.; Nicola, B.B.; von Delft, F.; Arrowsmith, C.H.; Edwards, A.; Bountra, C.; Brennan, P.E.; Yue, W.W.  
Deposited on : 2019-05-22  
Resolution : 1.67 Å(reported)

This is a Full wwPDB X-ray Structure Validation Report for a publicly released PDB entry.

We welcome your comments at [validation@mail.wwpdb.org](mailto:validation@mail.wwpdb.org)

A user guide is available at

<https://www.wwpdb.org/validation/2017/XrayValidationReportHelp>

with specific help available everywhere you see the ⓘ symbol.

The types of validation reports are described at

<http://www.wwpdb.org/validation/2017/FAQs#types>.

---

The following versions of software and data (see [references](#) ①) were used in the production of this report:

MolProbity	:	4.02b-467
Mogul	:	1.8.5 (274361), CSD as541be (2020)
Xtriage (Phenix)	:	1.13
EDS	:	2.37.1
buster-report	:	1.1.7 (2018)
Percentile statistics	:	20191225.v01 (using entries in the PDB archive December 25th 2019)
Refmac	:	5.8.0158
CCP4	:	7.0.044 (Gargrove)
Ideal geometry (proteins)	:	Engh & Huber (2001)
Ideal geometry (DNA, RNA)	:	Parkinson et al. (1996)
Validation Pipeline (wwPDB-VP)	:	2.37.1

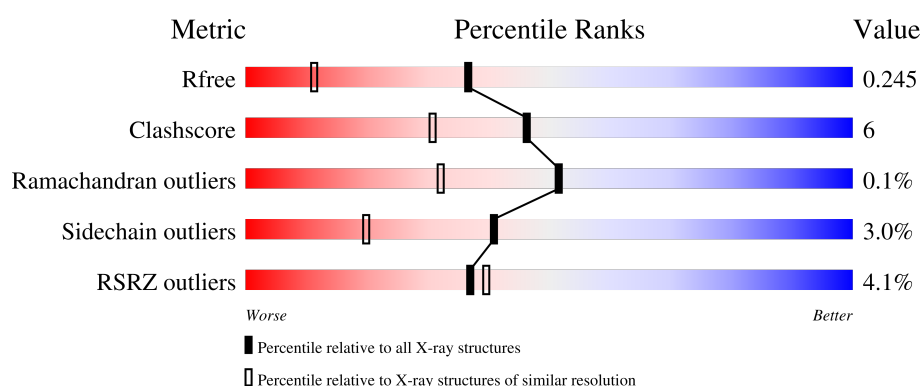
# 1 Overall quality at a glance

The following experimental techniques were used to determine the structure:

*X-RAY DIFFRACTION*

The reported resolution of this entry is 1.67 Å.

Percentile scores (ranging between 0-100) for global validation metrics of the entry are shown in the following graphic. The table shows the number of entries on which the scores are based.



Metric	Whole archive (#Entries)	Similar resolution (#Entries, resolution range(Å))
$R_{free}$	130704	6780 (1.70-1.66)
Clashscore	141614	7310 (1.70-1.66)
Ramachandran outliers	138981	7173 (1.70-1.66)
Sidechain outliers	138945	7172 (1.70-1.66)
RSRZ outliers	127900	6661 (1.70-1.66)

The table below summarises the geometric issues observed across the polymeric chains and their fit to the electron density. The red, orange, yellow and green segments of the lower bar indicate the fraction of residues that contain outliers for  $\geq 3$ , 2, 1 and 0 types of geometric quality criteria respectively. A grey segment represents the fraction of residues that are not modelled. The numeric value for each fraction is indicated below the corresponding segment, with a dot representing fractions  $\leq 5\%$ . The upper red bar (where present) indicates the fraction of residues that have poor fit to the electron density. The numeric value is given above the bar.

Mol	Chain	Length	Quality of chain
1	A	469	<div> <div>4%</div> <div> <div></div> <div>78%</div> <div>12%</div> <div>•</div> <div>9%</div> </div> </div>
1	B	469	<div> <div>4%</div> <div> <div></div> <div>78%</div> <div>12%</div> <div>•</div> <div>9%</div> </div> </div>

## 2 Entry composition

There are 4 unique types of molecules in this entry. The entry contains 6921 atoms, of which 0 are hydrogens and 0 are deuteriums.

In the tables below, the ZeroOcc column contains the number of atoms modelled with zero occupancy, the AltConf column contains the number of residues with at least one atom in alternate conformation and the Trace column contains the number of residues modelled with at most 2 atoms.

- Molecule 1 is a protein called 5-aminolevulinate synthase, erythroid-specific, mitochondrial.

Mol	Chain	Residues	Atoms					ZeroOcc	AltConf	Trace
1	B	428	Total	C	N	O	S	0	1	0
			3302	2102	577	601	22			
1	A	429	Total	C	N	O	S	0	1	0
			3322	2114	587	599	22			

There are 68 discrepancies between the modelled and reference sequences:

Chain	Residue	Modelled	Actual	Comment	Reference
B	119	MET	-	initiating methionine	UNP P22557
B	120	GLY	-	expression tag	UNP P22557
B	121	HIS	-	expression tag	UNP P22557
B	122	HIS	-	expression tag	UNP P22557
B	123	HIS	-	expression tag	UNP P22557
B	124	HIS	-	expression tag	UNP P22557
B	125	HIS	-	expression tag	UNP P22557
B	126	HIS	-	expression tag	UNP P22557
B	127	SER	-	expression tag	UNP P22557
B	128	SER	-	expression tag	UNP P22557
B	129	GLY	-	expression tag	UNP P22557
B	130	VAL	-	expression tag	UNP P22557
B	131	ASP	-	expression tag	UNP P22557
B	132	LEU	-	expression tag	UNP P22557
B	133	GLY	-	expression tag	UNP P22557
B	134	THR	-	expression tag	UNP P22557
B	135	GLU	-	expression tag	UNP P22557
B	136	ASN	-	expression tag	UNP P22557
B	137	LEU	-	expression tag	UNP P22557
B	138	TYR	-	expression tag	UNP P22557
B	139	PHE	-	expression tag	UNP P22557
B	140	GLN	-	expression tag	UNP P22557
B	141	SER	-	expression tag	UNP P22557
B	142	MET	-	expression tag	UNP P22557
B	221	VAL	ALA	conflict	UNP P22557

*Continued on next page...*

*Continued from previous page...*

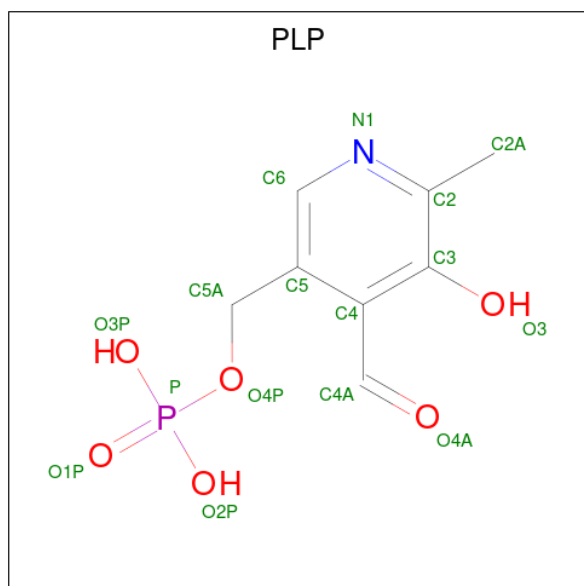
Chain	Residue	Modelled	Actual	Comment	Reference
B	579	GLY	-	expression tag	UNP P22557
B	580	PRO	-	expression tag	UNP P22557
B	581	GLN	-	expression tag	UNP P22557
B	582	TYR	-	expression tag	UNP P22557
B	583	VAL	-	expression tag	UNP P22557
B	584	THR	-	expression tag	UNP P22557
B	585	THR	-	expression tag	UNP P22557
B	586	TYR	-	expression tag	UNP P22557
B	587	ALA	-	expression tag	UNP P22557
A	119	MET	-	initiating methionine	UNP P22557
A	120	GLY	-	expression tag	UNP P22557
A	121	HIS	-	expression tag	UNP P22557
A	122	HIS	-	expression tag	UNP P22557
A	123	HIS	-	expression tag	UNP P22557
A	124	HIS	-	expression tag	UNP P22557
A	125	HIS	-	expression tag	UNP P22557
A	126	HIS	-	expression tag	UNP P22557
A	127	SER	-	expression tag	UNP P22557
A	128	SER	-	expression tag	UNP P22557
A	129	GLY	-	expression tag	UNP P22557
A	130	VAL	-	expression tag	UNP P22557
A	131	ASP	-	expression tag	UNP P22557
A	132	LEU	-	expression tag	UNP P22557
A	133	GLY	-	expression tag	UNP P22557
A	134	THR	-	expression tag	UNP P22557
A	135	GLU	-	expression tag	UNP P22557
A	136	ASN	-	expression tag	UNP P22557
A	137	LEU	-	expression tag	UNP P22557
A	138	TYR	-	expression tag	UNP P22557
A	139	PHE	-	expression tag	UNP P22557
A	140	GLN	-	expression tag	UNP P22557
A	141	SER	-	expression tag	UNP P22557
A	142	MET	-	expression tag	UNP P22557
A	221	VAL	ALA	conflict	UNP P22557
A	579	GLY	-	expression tag	UNP P22557
A	580	PRO	-	expression tag	UNP P22557
A	581	GLN	-	expression tag	UNP P22557
A	582	TYR	-	expression tag	UNP P22557
A	583	VAL	-	expression tag	UNP P22557
A	584	THR	-	expression tag	UNP P22557
A	585	THR	-	expression tag	UNP P22557
A	586	TYR	-	expression tag	UNP P22557

*Continued on next page...*

Continued from previous page...

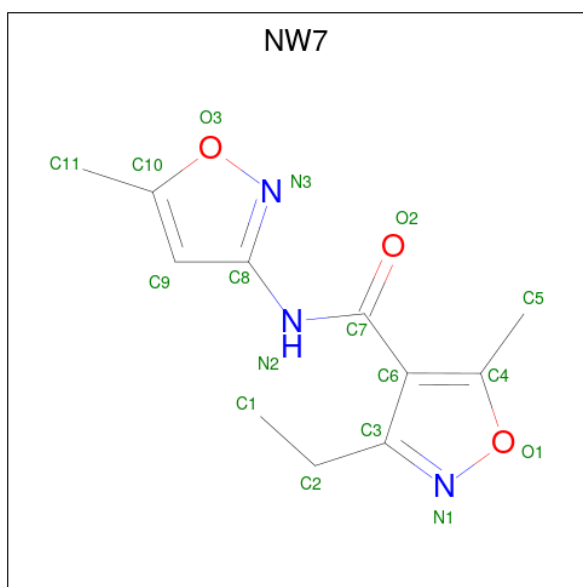
Chain	Residue	Modelled	Actual	Comment	Reference
A	587	ALA	-	expression tag	UNP P22557

- Molecule 2 is PYRIDOXAL-5'-PHOSPHATE (three-letter code: PLP) (formula:  $C_8H_{10}NO_6P$ ).



Mol	Chain	Residues	Atoms					ZeroOcc	AltConf
2	B	1	Total	C	N	O	P	0	0
			16	8	1	6	1		
2	A	1	Total	C	N	O	P	0	0
			16	8	1	6	1		

- Molecule 3 is 3-ethyl-5-methyl-N-(5-methyl-1,2-oxazol-3-yl)-1,2-oxazole-4-carboxamide (three-letter code: NW7) (formula:  $C_{11}H_{13}N_3O_3$ ) (labeled as "Ligand of Interest" by depositor).



Mol	Chain	Residues	Atoms				ZeroOcc	AltConf
3	A	1	Total	C	N	O	0	0
			17	11	3	3		

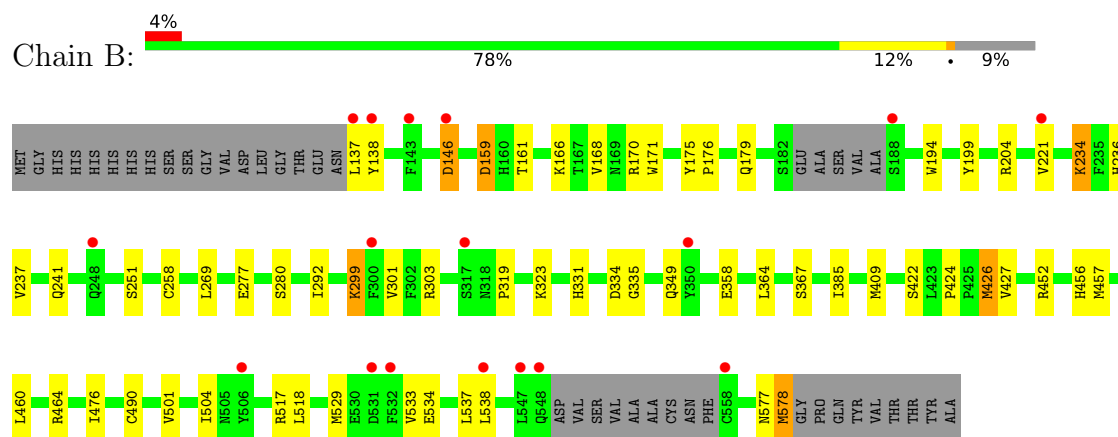
- Molecule 4 is water.

Mol	Chain	Residues	Atoms		ZeroOcc	AltConf
4	B	132	Total	O	0	0
			132	132		
4	A	116	Total	O	0	0
			116	116		

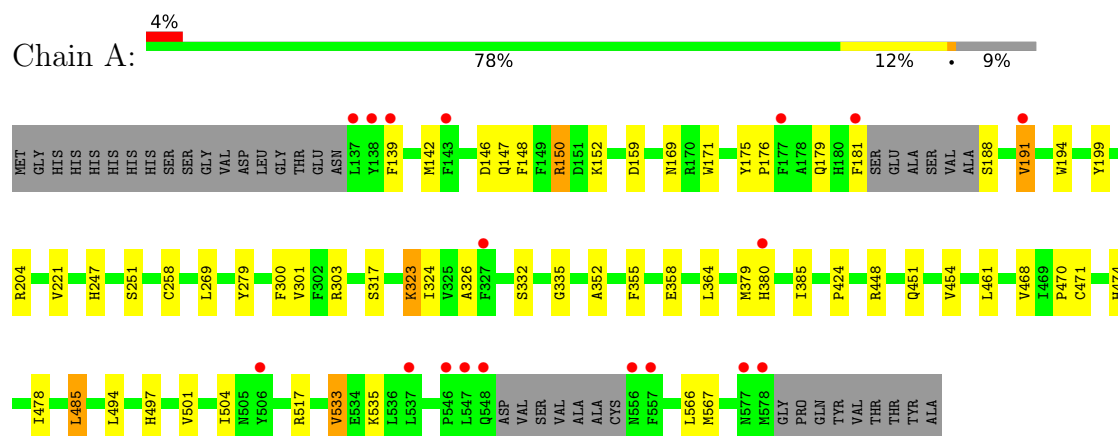
### 3 Residue-property plots [i](#)

These plots are drawn for all protein, RNA, DNA and oligosaccharide chains in the entry. The first graphic for a chain summarises the proportions of the various outlier classes displayed in the second graphic. The second graphic shows the sequence view annotated by issues in geometry and electron density. Residues are color-coded according to the number of geometric quality criteria for which they contain at least one outlier: green = 0, yellow = 1, orange = 2 and red = 3 or more. A red dot above a residue indicates a poor fit to the electron density ( $RSRZ > 2$ ). Stretches of 2 or more consecutive residues without any outlier are shown as a green connector. Residues present in the sample, but not in the model, are shown in grey.

- Molecule 1: 5-aminolevulinate synthase, erythroid-specific, mitochondrial



- Molecule 1: 5-aminolevulinate synthase, erythroid-specific, mitochondrial





## 4 Data and refinement statistics

Property	Value	Source
Space group	C 1 2 1	Depositor
Cell constants a, b, c, $\alpha$ , $\beta$ , $\gamma$	125.85Å 108.49Å 75.75Å 90.00° 109.14° 90.00°	Depositor
Resolution (Å)	71.66 – 1.67 71.56 – 1.67	Depositor EDS
% Data completeness (in resolution range)	61.1 (71.66-1.67) 61.1 (71.56-1.67)	Depositor EDS
$R_{merge}$	(Not available)	Depositor
$R_{sym}$	(Not available)	Depositor
$\langle I/\sigma(I) \rangle$ <sup>1</sup>	1.68 (at 1.67Å)	Xtriage
Refinement program	REFMAC 5.8.0238	Depositor
R, $R_{free}$	0.212 , 0.240 0.223 , 0.245	Depositor DCC
$R_{free}$ test set	3318 reflections (4.86%)	wwPDB-VP
Wilson B-factor (Å <sup>2</sup> )	20.0	Xtriage
Anisotropy	0.087	Xtriage
Bulk solvent $k_{sol}$ (e/Å <sup>3</sup> ), $B_{sol}$ (Å <sup>2</sup> )	0.34 , 30.5	EDS
L-test for twinning <sup>2</sup>	$\langle  L  \rangle = 0.50$ , $\langle L^2 \rangle = 0.33$	Xtriage
Estimated twinning fraction	No twinning to report.	Xtriage
$F_o, F_c$ correlation	0.93	EDS
Total number of atoms	6921	wwPDB-VP
Average B, all atoms (Å <sup>2</sup> )	23.0	wwPDB-VP

Xtriage's analysis on translational NCS is as follows: *The largest off-origin peak in the Patterson function is 4.53% of the height of the origin peak. No significant pseudotranslation is detected.*

<sup>1</sup>Intensities estimated from amplitudes.

<sup>2</sup>Theoretical values of  $\langle |L| \rangle$ ,  $\langle L^2 \rangle$  for acentric reflections are 0.5, 0.333 respectively for untwinned datasets, and 0.375, 0.2 for perfectly twinned datasets.

## 5 Model quality [i](#)

### 5.1 Standard geometry [i](#)

Bond lengths and bond angles in the following residue types are not validated in this section: PLP, NW7

The Z score for a bond length (or angle) is the number of standard deviations the observed value is removed from the expected value. A bond length (or angle) with  $|Z| > 5$  is considered an outlier worth inspection. RMSZ is the root-mean-square of all Z scores of the bond lengths (or angles).

Mol	Chain	Bond lengths		Bond angles	
		RMSZ	$\# Z  > 5$	RMSZ	$\# Z  > 5$
1	A	0.69	0/3403	0.84	0/4608
1	B	0.70	0/3381	0.83	2/4580 (0.0%)
All	All	0.70	0/6784	0.84	2/9188 (0.0%)

There are no bond length outliers.

All (2) bond angle outliers are listed below:

Mol	Chain	Res	Type	Atoms	Z	Observed(°)	Ideal(°)
1	B	170	ARG	NE-CZ-NH1	5.83	123.22	120.30
1	B	170	ARG	NE-CZ-NH2	-5.32	117.64	120.30

There are no chirality outliers.

There are no planarity outliers.

### 5.2 Too-close contacts [i](#)

In the following table, the Non-H and H(model) columns list the number of non-hydrogen atoms and hydrogen atoms in the chain respectively. The H(added) column lists the number of hydrogen atoms added and optimized by MolProbity. The Clashes column lists the number of clashes within the asymmetric unit, whereas Symm-Clashes lists symmetry-related clashes.

Mol	Chain	Non-H	H(model)	H(added)	Clashes	Symm-Clashes
1	A	3322	0	3215	43	0
1	B	3302	0	3192	41	0
2	A	16	0	7	2	0
2	B	16	0	7	2	0
3	A	17	0	0	0	0
4	A	116	0	0	2	0
4	B	132	0	0	6	0

*Continued on next page...*

*Continued from previous page...*

Mol	Chain	Non-H	H(model)	H(added)	Clashes	Symm-Clashes
All	All	6921	0	6421	82	0

The all-atom clashscore is defined as the number of clashes found per 1000 atoms (including hydrogen atoms). The all-atom clashscore for this structure is 6.

All (82) close contacts within the same asymmetric unit are listed below, sorted by their clash magnitude.

Atom-1	Atom-2	Interatomic distance (Å)	Clash overlap (Å)
1:A:147:GLN:OE1	1:A:150:ARG:NH1	2.13	0.82
1:B:303:ARG:NH1	4:B:702:HOH:O	2.14	0.79
1:A:461:LEU:HD21	1:A:478:ILE:HD11	1.67	0.76
1:B:171:TRP:CZ2	1:B:179:GLN:HG3	2.26	0.71
1:B:175:TYR:HB2	1:B:204:ARG:HD2	1.72	0.71
1:B:349:GLN:OE1	4:B:701:HOH:O	2.09	0.69
1:B:194:TRP:HB2	1:B:501:VAL:CG1	2.24	0.67
1:B:460:LEU:O	1:B:464:ARG:HG2	1.93	0.67
1:A:497:HIS:ND1	1:A:535:LYS:HE2	2.12	0.65
1:B:194:TRP:HB2	1:B:501:VAL:HG12	1.79	0.63
1:A:451:GLN:O	1:A:454:VAL:HG12	1.99	0.62
1:B:335:GLY:CA	4:B:739:HOH:O	2.48	0.61
2:B:601:PLP:O3P	4:B:703:HOH:O	2.16	0.60
1:B:452:ARG:NH1	4:B:705:HOH:O	2.34	0.60
1:B:464:ARG:HB3	1:B:537:LEU:HD11	1.83	0.59
1:A:461:LEU:CD2	1:A:478:ILE:HD11	2.33	0.59
1:A:470:PRO:O	1:A:471:CYS:SG	2.59	0.59
1:A:146:ASP:O	1:A:150:ARG:HG2	2.03	0.58
1:B:221:VAL:O	1:B:424:PRO:HB3	2.04	0.58
1:A:175:TYR:HB2	1:A:204:ARG:HD2	1.84	0.58
1:A:335:GLY:O	1:A:471:CYS:HB3	2.04	0.58
1:A:461:LEU:HD12	1:A:533:VAL:CG1	2.34	0.58
1:A:169:ASN:HD21	1:A:181:PHE:HE2	1.52	0.57
1:B:237:VAL:O	1:B:241:GLN:HG3	2.04	0.57
1:B:236:HIS:NE2	1:B:422:SER:OG	2.38	0.57
1:B:319:PRO:O	1:A:142:MET:HB3	2.06	0.56
1:B:335:GLY:HA2	4:B:739:HOH:O	2.07	0.54
1:B:504:ILE:HD12	1:B:517:ARG:HB2	1.88	0.54
1:A:332:SER:HB3	2:A:902:PLP:H2A1	1.90	0.54
1:B:175:TYR:CB	1:B:204:ARG:HD2	2.37	0.53
1:A:317:SER:OG	1:A:323:LYS:HE2	2.09	0.53
1:A:258:CYS:HB3	2:A:902:PLP:O4P	2.09	0.53
1:A:504:ILE:HD12	1:A:517:ARG:HB2	1.91	0.52

*Continued on next page...*

*Continued from previous page...*

Atom-1	Atom-2	Interatomic distance (Å)	Clash overlap (Å)
1:B:258:CYS:HB3	2:B:601:PLP:O4P	2.11	0.51
1:B:199:TYR:CD2	1:B:364:LEU:HD11	2.46	0.51
1:A:247:HIS:HA	1:A:379:MET:CE	2.43	0.49
1:B:277:GLU:O	1:B:323:LYS:HA	2.13	0.49
1:B:426:MET:HG2	1:B:427:VAL:N	2.28	0.49
1:B:456:HIS:ND1	1:B:529:MET:HE2	2.28	0.48
1:A:323:LYS:HG3	1:A:352:ALA:HB2	1.95	0.48
1:B:534:GLU:O	1:B:538:LEU:HD23	2.13	0.48
1:A:221:VAL:O	1:A:424:PRO:HB3	2.13	0.48
1:A:194:TRP:HB2	1:A:501:VAL:HG12	1.96	0.47
1:B:137:LEU:HD12	1:B:137:LEU:N	2.29	0.47
1:A:451:GLN:O	1:A:454:VAL:CG1	2.63	0.47
1:B:280:SER:O	1:B:301:VAL:HA	2.14	0.47
1:B:166:LYS:HE3	1:B:490:CYS:SG	2.55	0.46
1:A:358:GLU:HG3	1:A:385:ILE:HD11	1.96	0.46
1:B:269:LEU:HD23	1:B:409:MET:HE1	1.98	0.46
1:A:301:VAL:HG11	1:A:566:LEU:O	2.16	0.46
1:A:179:GLN:HG3	1:A:188:SER:OG	2.16	0.45
1:A:194:TRP:HB2	1:A:501:VAL:CG1	2.46	0.45
1:B:349:GLN:HA	1:A:139:PHE:CD1	2.52	0.45
1:A:191:VAL:HG21	1:A:494:LEU:HD12	2.00	0.44
1:B:292:ILE:CG2	1:B:299:LYS:HG3	2.48	0.43
1:A:326:ALA:HA	1:A:355:PHE:O	2.18	0.43
1:B:476:ILE:HB	1:B:518:LEU:HB2	1.99	0.43
1:B:529:MET:O	1:B:533:VAL:HG23	2.18	0.43
1:B:331:HIS:HB3	1:B:334:ASP:OD1	2.18	0.43
1:A:279:TYR:HA	1:A:300:PHE:O	2.19	0.43
1:A:451:GLN:HA	1:A:454:VAL:HG12	2.00	0.43
1:A:303:ARG:NH1	4:A:1008:HOH:O	2.51	0.42
1:A:454:VAL:HG21	1:A:474:HIS:HA	2.01	0.42
1:A:380[B]:HIS:HE1	4:A:1031:HOH:O	2.03	0.42
1:A:504:ILE:CD1	1:A:517:ARG:HB2	2.50	0.42
1:B:168:VAL:HA	1:B:179:GLN:O	2.20	0.41
1:A:269:LEU:HB3	1:A:324:ILE:HD11	2.01	0.41
1:B:234:LYS:HG2	1:A:169:ASN:ND2	2.35	0.41
1:B:292:ILE:HG21	1:B:299:LYS:HG3	2.02	0.41
1:B:358:GLU:HG3	1:B:385:ILE:CD1	2.50	0.41
1:A:148:PHE:O	1:A:152:LYS:HG2	2.21	0.41
1:A:191:VAL:HG21	1:A:494:LEU:CD1	2.50	0.41
1:B:159:ASP:HB3	1:B:161:THR:HG23	2.02	0.41
1:B:504:ILE:HD12	1:B:517:ARG:CB	2.51	0.41

*Continued on next page...*

Continued from previous page...

Atom-1	Atom-2	Interatomic distance (Å)	Clash overlap (Å)
1:B:577:ASN:OD1	1:B:578:MET:N	2.53	0.41
1:A:171:TRP:CZ2	1:A:179:GLN:HB2	2.56	0.41
1:A:461:LEU:HD12	1:A:533:VAL:HG12	2.02	0.40
1:B:457:MET:HB2	1:B:529:MET:HE3	2.03	0.40
1:A:485:LEU:HD13	1:A:485:LEU:HA	1.92	0.40
1:A:199:TYR:CD2	1:A:364:LEU:HD11	2.57	0.40
1:A:279:TYR:CD2	1:A:300:PHE:HB2	2.57	0.40
1:B:171:TRP:CE2	1:B:179:GLN:HG3	2.57	0.40

There are no symmetry-related clashes.

## 5.3 Torsion angles [i](#)

### 5.3.1 Protein backbone [i](#)

In the following table, the Percentiles column shows the percent Ramachandran outliers of the chain as a percentile score with respect to all X-ray entries followed by that with respect to entries of similar resolution.

The Analysed column shows the number of residues for which the backbone conformation was analysed, and the total number of residues.

Mol	Chain	Analysed	Favoured	Allowed	Outliers	Percentiles	
1	A	424/469 (90%)	409 (96%)	15 (4%)	0	100	100
1	B	423/469 (90%)	409 (97%)	13 (3%)	1 (0%)	47	29
All	All	847/938 (90%)	818 (97%)	28 (3%)	1 (0%)	51	32

All (1) Ramachandran outliers are listed below:

Mol	Chain	Res	Type
1	B	146	ASP

### 5.3.2 Protein sidechains [i](#)

In the following table, the Percentiles column shows the percent sidechain outliers of the chain as a percentile score with respect to all X-ray entries followed by that with respect to entries of similar resolution.

The Analysed column shows the number of residues for which the sidechain conformation was analysed, and the total number of residues.

Mol	Chain	Analysed	Rotameric	Outliers	Percentiles	
1	A	347/396 (88%)	336 (97%)	11 (3%)	39	17
1	B	345/396 (87%)	335 (97%)	10 (3%)	42	21
All	All	692/792 (87%)	671 (97%)	21 (3%)	41	20

All (21) residues with a non-rotameric sidechain are listed below:

Mol	Chain	Res	Type
1	B	138	TYR
1	B	146	ASP
1	B	159	ASP
1	B	176	PRO
1	B	234	LYS
1	B	251	SER
1	B	299	LYS
1	B	367	SER
1	B	426	MET
1	B	578	MET
1	A	150	ARG
1	A	159	ASP
1	A	176	PRO
1	A	191	VAL
1	A	251	SER
1	A	323	LYS
1	A	448	ARG
1	A	468	VAL
1	A	485	LEU
1	A	533	VAL
1	A	567	MET

Sometimes sidechains can be flipped to improve hydrogen bonding and reduce clashes. All (3) such sidechains are listed below:

Mol	Chain	Res	Type
1	B	180	HIS
1	B	349	GLN
1	A	158	GLN

### 5.3.3 RNA ⓘ

There are no RNA molecules in this entry.

## 5.4 Non-standard residues in protein, DNA, RNA chains [i](#)

There are no non-standard protein/DNA/RNA residues in this entry.

## 5.5 Carbohydrates [i](#)

There are no monosaccharides in this entry.

## 5.6 Ligand geometry [i](#)

3 ligands are modelled in this entry.

In the following table, the Counts columns list the number of bonds (or angles) for which Mogul statistics could be retrieved, the number of bonds (or angles) that are observed in the model and the number of bonds (or angles) that are defined in the Chemical Component Dictionary. The Link column lists molecule types, if any, to which the group is linked. The Z score for a bond length (or angle) is the number of standard deviations the observed value is removed from the expected value. A bond length (or angle) with  $|Z| > 2$  is considered an outlier worth inspection. RMSZ is the root-mean-square of all Z scores of the bond lengths (or angles).

Mol	Type	Chain	Res	Link	Bond lengths			Bond angles		
					Counts	RMSZ	$\# Z  > 2$	Counts	RMSZ	$\# Z  > 2$
2	PLP	B	601	-	16,16,16	0.83	1 (6%)	20,23,23	0.92	1 (5%)
3	NW7	A	901	-	11,18,18	1.58	2 (18%)	9,25,25	1.06	1 (11%)
2	PLP	A	902	-	16,16,16	0.85	1 (6%)	20,23,23	0.96	1 (5%)

In the following table, the Chirals column lists the number of chiral outliers, the number of chiral centers analysed, the number of these observed in the model and the number defined in the Chemical Component Dictionary. Similar counts are reported in the Torsion and Rings columns. '-' means no outliers of that kind were identified.

Mol	Type	Chain	Res	Link	Chirals	Torsions	Rings
2	PLP	B	601	-	-	3/8/8/8	0/1/1/1
3	NW7	A	901	-	-	1/3/10/10	0/2/2/2
2	PLP	A	902	-	-	1/8/8/8	0/1/1/1

All (4) bond length outliers are listed below:

Mol	Chain	Res	Type	Atoms	Z	Observed(Å)	Ideal(Å)
3	A	901	NW7	C9-C10	-4.31	1.33	1.39
3	A	901	NW7	C6-C7	-2.44	1.47	1.51
2	B	601	PLP	C3-C2	2.05	1.43	1.40
2	A	902	PLP	P-O4P	2.02	1.66	1.60

All (3) bond angle outliers are listed below:

Mol	Chain	Res	Type	Atoms	Z	Observed(°)	Ideal(°)
2	A	902	PLP	C3-C4-C4A	-2.39	116.51	119.90
2	B	601	PLP	C3-C4-C4A	-2.22	116.75	119.90
3	A	901	NW7	C11-C10-C9	2.21	134.93	129.02

There are no chirality outliers.

All (5) torsion outliers are listed below:

Mol	Chain	Res	Type	Atoms
2	B	601	PLP	C5A-O4P-P-O1P
2	B	601	PLP	C5A-O4P-P-O3P
2	A	902	PLP	C3-C4-C4A-O4A
3	A	901	NW7	C1-C2-C3-C6
2	B	601	PLP	C5A-O4P-P-O2P

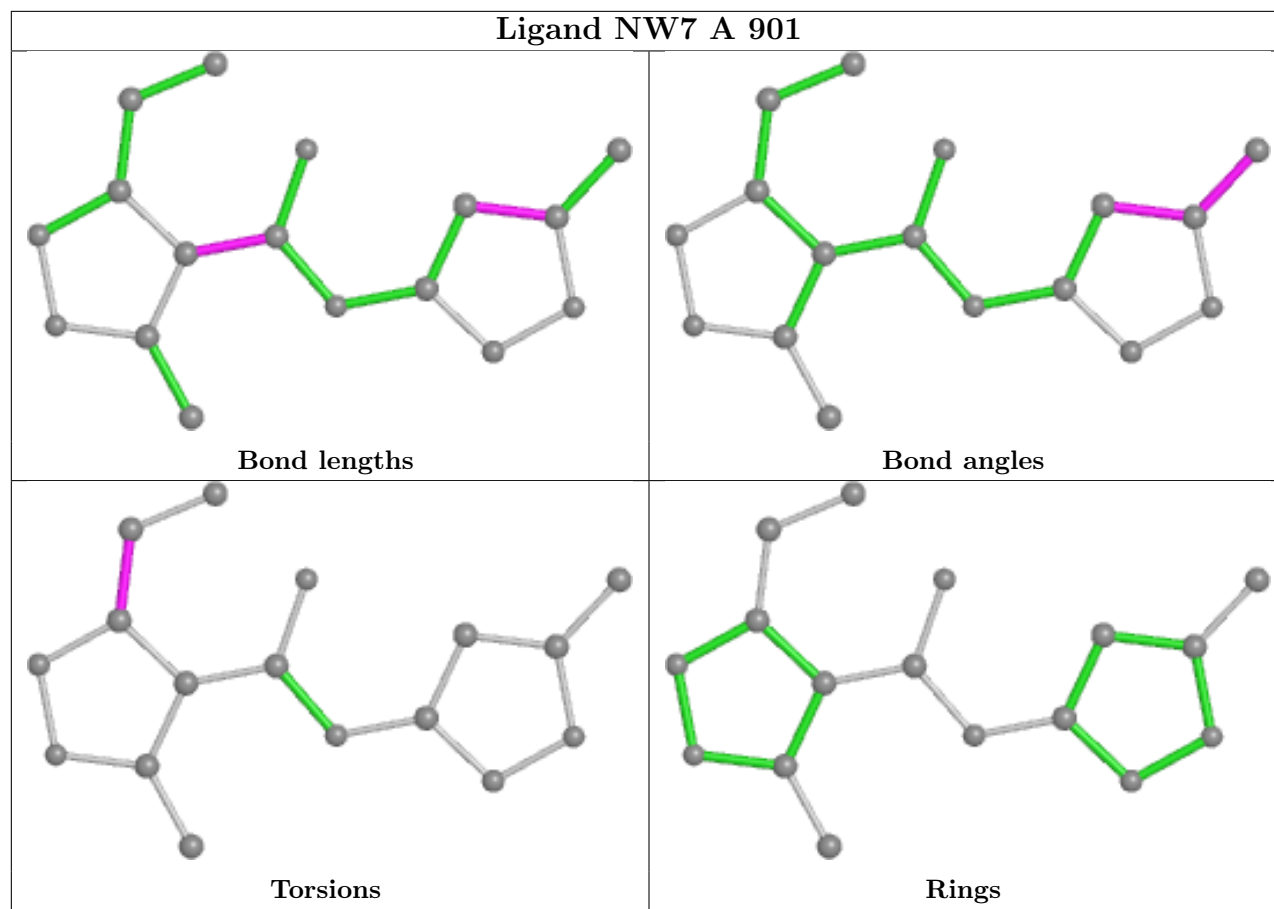
There are no ring outliers.

2 monomers are involved in 4 short contacts:

Mol	Chain	Res	Type	Clashes	Symm-Clashes
2	B	601	PLP	2	0
2	A	902	PLP	2	0

The following is a two-dimensional graphical depiction of Mogul quality analysis of bond lengths, bond angles, torsion angles, and ring geometry for all instances of the Ligand of Interest. In addition, ligands with molecular weight > 250 and outliers as shown on the validation Tables will also be included. For torsion angles, if less than 5% of the Mogul distribution of torsion angles is within 10 degrees of the torsion angle in question, then that torsion angle is considered an outlier. Any bond that is central to one or more torsion angles identified as an outlier by Mogul will be highlighted in the graph. For rings, the root-mean-square deviation (RMSD) between the ring in question and similar rings identified by Mogul is calculated over all ring torsion angles. If the average RMSD is greater than 60 degrees and the minimal RMSD between the ring in question and any Mogul-identified rings is also greater than 60 degrees, then that ring is considered an outlier. The outliers are highlighted in purple. The color gray indicates Mogul did not find sufficient equivalents in the CSD to analyse the geometry.





## 5.7 Other polymers [i](#)

There are no such residues in this entry.

## 5.8 Polymer linkage issues [i](#)

There are no chain breaks in this entry.

## 6 Fit of model and data

### 6.1 Protein, DNA and RNA chains

In the following table, the column labelled ‘#RSRZ > 2’ contains the number (and percentage) of RSRZ outliers, followed by percent RSRZ outliers for the chain as percentile scores relative to all X-ray entries and entries of similar resolution. The OWAB column contains the minimum, median, 95<sup>th</sup> percentile and maximum values of the occupancy-weighted average B-factor per residue. The column labelled ‘Q < 0.9’ lists the number of (and percentage) of residues with an average occupancy less than 0.9.

Mol	Chain	Analysed	<RSRZ>	#RSRZ>2	OWAB(Å <sup>2</sup> )	Q<0.9
1	A	429/469 (91%)	-0.01	18 (4%) 36 38	10, 21, 43, 82	6 (1%)
1	B	428/469 (91%)	-0.08	17 (3%) 38 41	11, 21, 40, 77	7 (1%)
All	All	857/938 (91%)	-0.04	35 (4%) 37 39	10, 21, 42, 82	13 (1%)

All (35) RSRZ outliers are listed below:

Mol	Chain	Res	Type	RSRZ
1	B	532	PHE	9.9
1	A	327	PHE	9.6
1	A	506	TYR	8.2
1	B	143	PHE	8.0
1	A	557	PHE	7.7
1	B	506	TYR	7.5
1	A	380[A]	HIS	7.2
1	B	300	PHE	7.1
1	A	137	LEU	7.0
1	A	139	PHE	5.9
1	A	177	PHE	5.7
1	A	547	LEU	5.7
1	B	547	LEU	5.6
1	A	577	ASN	5.5
1	A	143	PHE	5.3
1	A	181	PHE	4.9
1	B	350	TYR	4.8
1	B	548	GLN	4.7
1	B	531	ASP	4.6
1	B	558	CYS	3.9
1	A	548	GLN	3.9
1	B	138	TYR	3.6
1	A	578	MET	3.2
1	B	538	LEU	3.2

*Continued on next page...*

*Continued from previous page...*

Mol	Chain	Res	Type	RSRZ
1	B	137	LEU	3.2
1	B	248[A]	GLN	3.0
1	B	146	ASP	2.8
1	A	546	PRO	2.7
1	B	317	SER	2.6
1	A	537	LEU	2.6
1	A	556	ASN	2.4
1	A	191	VAL	2.2
1	B	188	SER	2.2
1	A	138	TYR	2.1
1	B	221	VAL	2.0

## 6.2 Non-standard residues in protein, DNA, RNA chains [i](#)

There are no non-standard protein/DNA/RNA residues in this entry.

## 6.3 Carbohydrates [i](#)

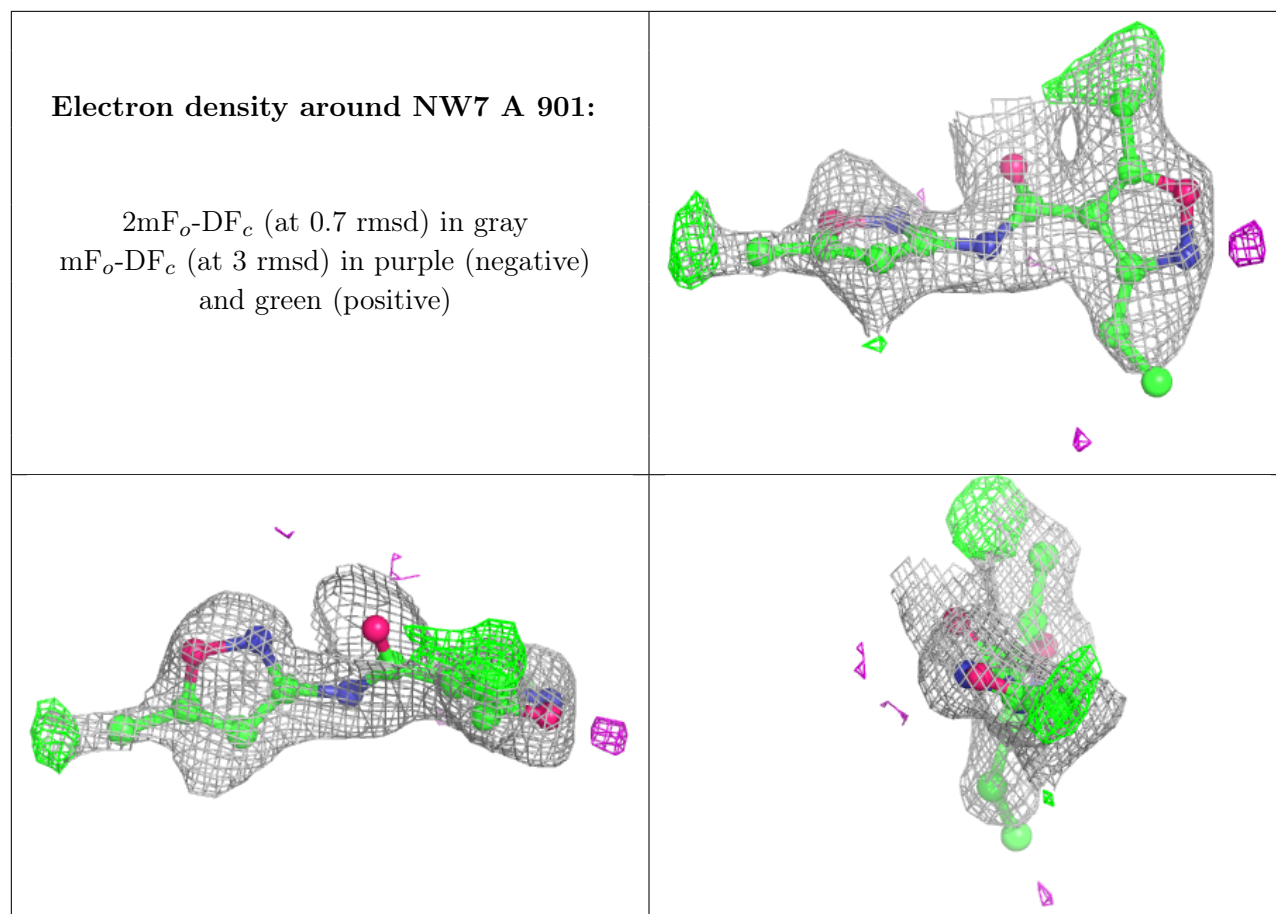
There are no monosaccharides in this entry.

## 6.4 Ligands [i](#)

In the following table, the Atoms column lists the number of modelled atoms in the group and the number defined in the chemical component dictionary. The B-factors column lists the minimum, median, 95<sup>th</sup> percentile and maximum values of B factors of atoms in the group. The column labelled 'Q< 0.9' lists the number of atoms with occupancy less than 0.9.

Mol	Type	Chain	Res	Atoms	RSCC	RSR	B-factors( $\text{\AA}^2$ )	Q<0.9
3	NW7	A	901	17/17	0.69	0.21	48,50,53,54	0
2	PLP	B	601	16/16	0.88	0.14	19,24,29,32	0
2	PLP	A	902	16/16	0.89	0.14	20,25,30,36	0

The following is a graphical depiction of the model fit to experimental electron density of all instances of the Ligand of Interest. In addition, ligands with molecular weight > 250 and outliers as shown on the geometry validation Tables will also be included. Each fit is shown from different orientation to approximate a three-dimensional view.



## 6.5 Other polymers [i](#)

There are no such residues in this entry.