



Full wwPDB X-ray Structure Validation Report ⓘ

Mar 20, 2025 – 02:08 PM EDT

PDB ID : 4QP1
Title : Crystal structure of ERK2 in complex with N-cyclohexyl-9H-purin-6-amine
Authors : Yin, J.; Wang, W.
Deposited on : 2014-06-22
Resolution : 2.70 Å(reported)

This is a Full wwPDB X-ray Structure Validation Report for a publicly released PDB entry.

We welcome your comments at validation@mail.wwpdb.org

A user guide is available at

<https://www.wwpdb.org/validation/2017/XrayValidationReportHelp>

with specific help available everywhere you see the ⓘ symbol.

The types of validation reports are described at

<http://www.wwpdb.org/validation/2017/FAQs#types>.

The following versions of software and data (see [references ⓘ](#)) were used in the production of this report:

MolProbity : 4.02b-467
Mogul : 2022.3.0, CSD as543be (2022)
Xtriage (Phenix) : 1.21
EDS : 3.0
Percentile statistics : 20231227.v01 (using entries in the PDB archive December 27th 2023)
CCP4 : 9.0.004 (Gargrove)
Density-Fitness : 1.0.11
Ideal geometry (proteins) : Engh & Huber (2001)
Ideal geometry (DNA, RNA) : Parkinson et al. (1996)
Validation Pipeline (wwPDB-VP) : 2.41.4

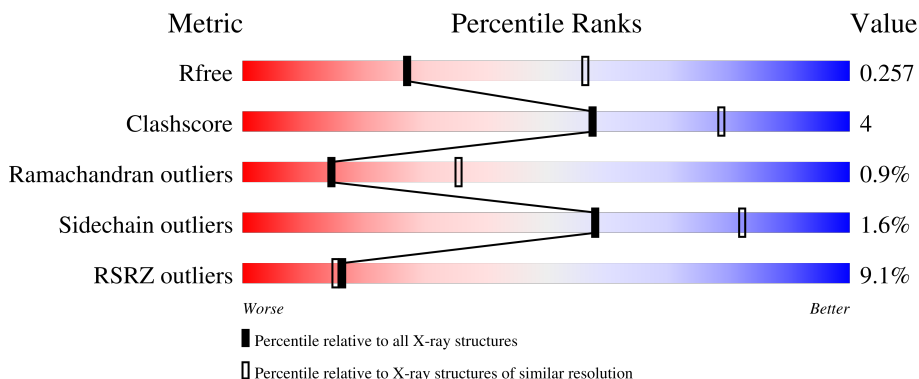
1 Overall quality at a glance

The following experimental techniques were used to determine the structure:

X-RAY DIFFRACTION

The reported resolution of this entry is 2.70 Å.

Percentile scores (ranging between 0-100) for global validation metrics of the entry are shown in the following graphic. The table shows the number of entries on which the scores are based.



Metric	Whole archive (#Entries)	Similar resolution (#Entries, resolution range(Å))
R_{free}	164625	3333 (2.70-2.70)
Clashscore	180529	3684 (2.70-2.70)
Ramachandran outliers	177936	3633 (2.70-2.70)
Sidechain outliers	177891	3633 (2.70-2.70)
RSRZ outliers	164620	3333 (2.70-2.70)

The table below summarises the geometric issues observed across the polymeric chains and their fit to the electron density. The red, orange, yellow and green segments of the lower bar indicate the fraction of residues that contain outliers for ≥ 3 , 2, 1 and 0 types of geometric quality criteria respectively. A grey segment represents the fraction of residues that are not modelled. The numeric value for each fraction is indicated below the corresponding segment, with a dot representing fractions $\leq 5\%$. The upper red bar (where present) indicates the fraction of residues that have poor fit to the electron density. The numeric value is given above the bar.

Mol	Chain	Length	Quality of chain
1	A	369	
1	B	369	

2 Entry composition

There are 4 unique types of molecules in this entry. The entry contains 5850 atoms, of which 0 are hydrogens and 0 are deuteriums.

In the tables below, the ZeroOcc column contains the number of atoms modelled with zero occupancy, the AltConf column contains the number of residues with at least one atom in alternate conformation and the Trace column contains the number of residues modelled with at most 2 atoms.

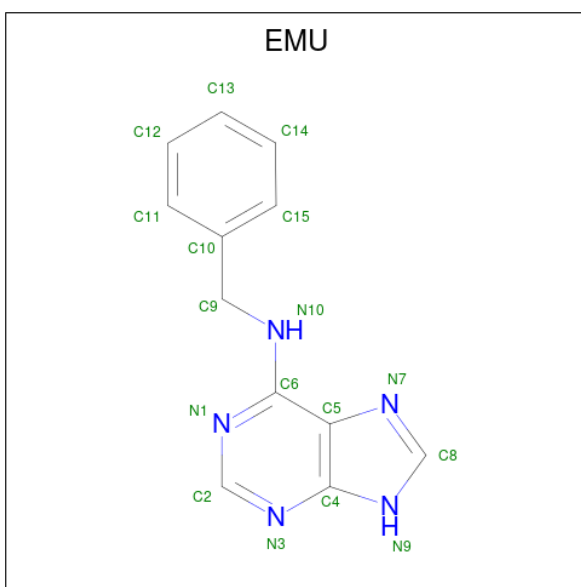
- Molecule 1 is a protein called Mitogen-activated protein kinase 1.

Mol	Chain	Residues	Atoms						ZeroOcc	AltConf	Trace
1	A	343	Total	C	N	O	P	S	0	0	0
			2808	1798	482	513	1	14			
1	B	344	Total	C	N	O	P	S	0	0	0
			2812	1805	477	514	1	15			

There are 18 discrepancies between the modelled and reference sequences:

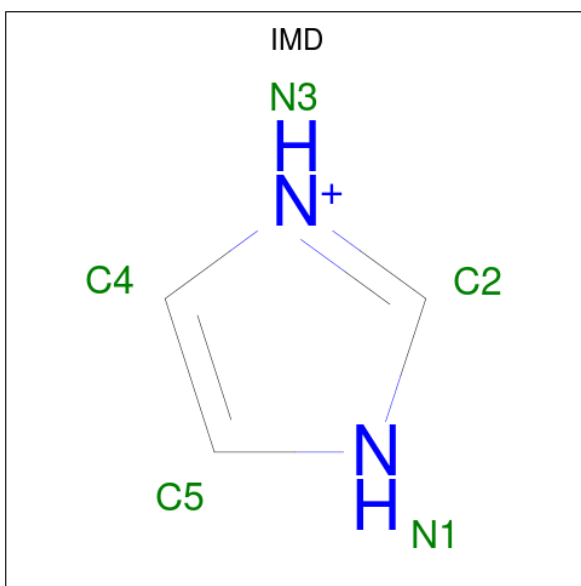
Chain	Residue	Modelled	Actual	Comment	Reference
A	-8	MET	-	expression tag	UNP P28482
A	-7	GLY	-	expression tag	UNP P28482
A	-6	SER	-	expression tag	UNP P28482
A	-5	HIS	-	expression tag	UNP P28482
A	-4	HIS	-	expression tag	UNP P28482
A	-3	HIS	-	expression tag	UNP P28482
A	-2	HIS	-	expression tag	UNP P28482
A	-1	HIS	-	expression tag	UNP P28482
A	0	HIS	-	expression tag	UNP P28482
B	-8	MET	-	expression tag	UNP P28482
B	-7	GLY	-	expression tag	UNP P28482
B	-6	SER	-	expression tag	UNP P28482
B	-5	HIS	-	expression tag	UNP P28482
B	-4	HIS	-	expression tag	UNP P28482
B	-3	HIS	-	expression tag	UNP P28482
B	-2	HIS	-	expression tag	UNP P28482
B	-1	HIS	-	expression tag	UNP P28482
B	0	HIS	-	expression tag	UNP P28482

- Molecule 2 is N-BENZYL-9H-PURIN-6-AMINE (three-letter code: EMU) (formula: $C_{12}H_{11}N_5$).



Mol	Chain	Residues	Atoms			ZeroOcc	AltConf
2	A	1	Total	C	N	0	0
			17	12	5		
2	B	1	Total	C	N	0	0
			17	12	5		

- Molecule 3 is IMIDAZOLE (three-letter code: IMD) (formula: $C_3H_5N_2$).



Mol	Chain	Residues	Atoms			ZeroOcc	AltConf
3	A	1	Total	C	N	0	0
			5	3	2		
3	B	1	Total	C	N	0	0
			5	3	2		

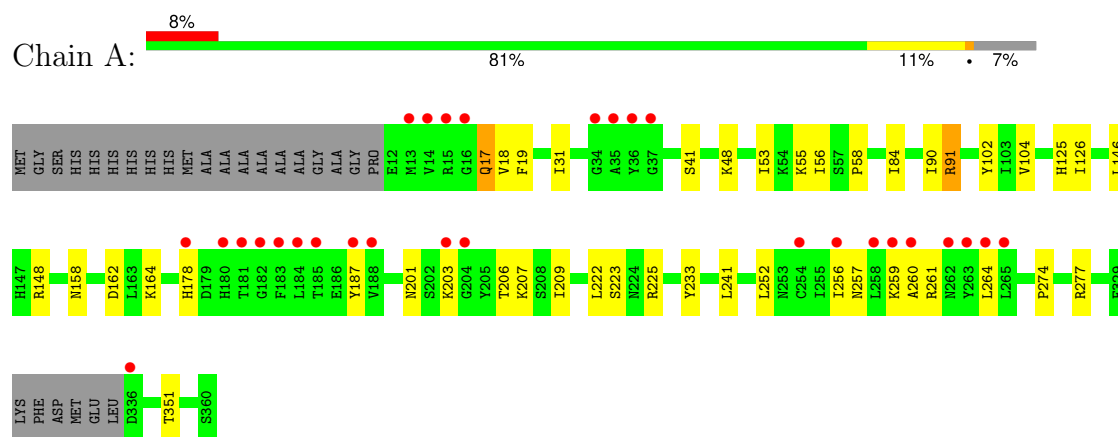
- Molecule 4 is water.

Mol	Chain	Residues	Atoms		ZeroOcc	AltConf
4	A	98	Total 98	O 98	0	0
4	B	88	Total 88	O 88	0	0

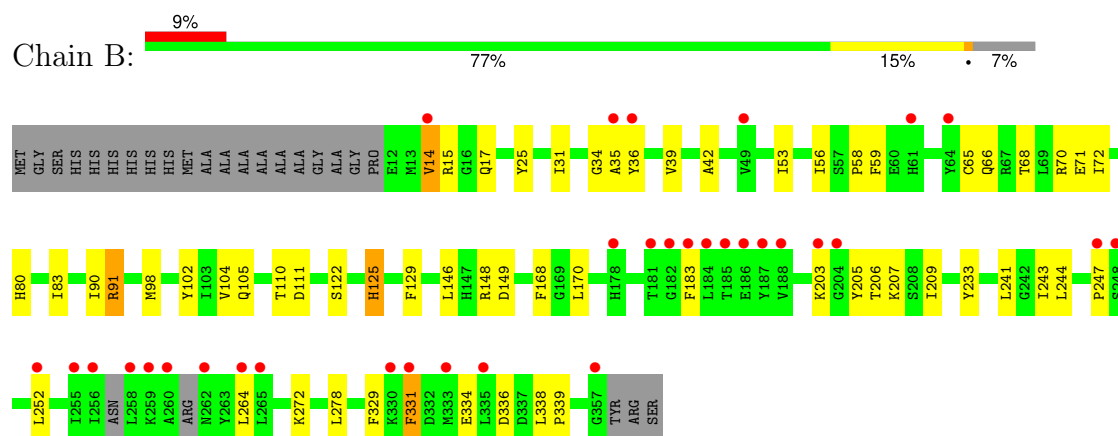
3 Residue-property plots [i](#)

These plots are drawn for all protein, RNA, DNA and oligosaccharide chains in the entry. The first graphic for a chain summarises the proportions of the various outlier classes displayed in the second graphic. The second graphic shows the sequence view annotated by issues in geometry and electron density. Residues are color-coded according to the number of geometric quality criteria for which they contain at least one outlier: green = 0, yellow = 1, orange = 2 and red = 3 or more. A red dot above a residue indicates a poor fit to the electron density ($RSRZ > 2$). Stretches of 2 or more consecutive residues without any outlier are shown as a green connector. Residues present in the sample, but not in the model, are shown in grey.

• Molecule 1: Mitogen-activated protein kinase 1



• Molecule 1: Mitogen-activated protein kinase 1



4 Data and refinement statistics

Property	Value	Source
Space group	P 41 21 2	Depositor
Cell constants a, b, c, α , β , γ	82.81Å 82.81Å 274.60Å 90.00° 90.00° 90.00°	Depositor
Resolution (Å)	49.33 – 2.70 49.33 – 2.70	Depositor EDS
% Data completeness (in resolution range)	99.1 (49.33-2.70) 99.5 (49.33-2.70)	Depositor EDS
R_{merge}	(Not available)	Depositor
R_{sym}	(Not available)	Depositor
$\langle I/\sigma(I) \rangle$ ¹	1.69 (at 2.69Å)	Xtriage
Refinement program	PHENIX (phenix.refine: 1.8.2_1309)	Depositor
R, R_{free}	0.203 , 0.255 0.204 , 0.257	Depositor DCC
R_{free} test set	1371 reflections (5.05%)	wwPDB-VP
Wilson B-factor (Å ²)	52.4	Xtriage
Anisotropy	0.161	Xtriage
Bulk solvent k_{sol} (e/Å ³), B_{sol} (Å ²)	0.30 , 60.0	EDS
L-test for twinning ²	$\langle L \rangle = 0.47$, $\langle L^2 \rangle = 0.30$	Xtriage
Estimated twinning fraction	No twinning to report.	Xtriage
F_o, F_c correlation	0.93	EDS
Total number of atoms	5850	wwPDB-VP
Average B, all atoms (Å ²)	75.0	wwPDB-VP

Xtriage's analysis on translational NCS is as follows: *The largest off-origin peak in the Patterson function is 4.04% of the height of the origin peak. No significant pseudotranslation is detected.*

¹Intensities estimated from amplitudes.

²Theoretical values of $\langle |L| \rangle$, $\langle L^2 \rangle$ for acentric reflections are 0.5, 0.333 respectively for untwinned datasets, and 0.375, 0.2 for perfectly twinned datasets.

5 Model quality

5.1 Standard geometry

Bond lengths and bond angles in the following residue types are not validated in this section: NEP, EMU, IMD

The Z score for a bond length (or angle) is the number of standard deviations the observed value is removed from the expected value. A bond length (or angle) with $|Z| > 5$ is considered an outlier worth inspection. RMSZ is the root-mean-square of all Z scores of the bond lengths (or angles).

Mol	Chain	Bond lengths		Bond angles	
		RMSZ	$\# Z > 5$	RMSZ	$\# Z > 5$
1	A	0.23	0/2859	0.41	0/3871
1	B	0.23	0/2862	0.39	0/3874
All	All	0.23	0/5721	0.40	0/7745

There are no bond length outliers.

There are no bond angle outliers.

There are no chirality outliers.

There are no planarity outliers.

5.2 Too-close contacts

In the following table, the Non-H and H(model) columns list the number of non-hydrogen atoms and hydrogen atoms in the chain respectively. The H(added) column lists the number of hydrogen atoms added and optimized by MolProbity. The Clashes column lists the number of clashes within the asymmetric unit, whereas Symm-Clashes lists symmetry-related clashes.

Mol	Chain	Non-H	H(model)	H(added)	Clashes	Symm-Clashes
1	A	2808	0	2802	20	0
1	B	2812	0	2807	30	0
2	A	17	0	11	0	0
2	B	17	0	11	1	0
3	A	5	0	5	0	0
3	B	5	0	5	0	0
4	A	98	0	0	0	0
4	B	88	0	0	1	0
All	All	5850	0	5641	50	0

The all-atom clashscore is defined as the number of clashes found per 1000 atoms (including hydrogen atoms). The all-atom clashscore for this structure is 4.

All (50) close contacts within the same asymmetric unit are listed below, sorted by their clash magnitude.

Atom-1	Atom-2	Interatomic distance (Å)	Clash overlap (Å)
1:A:90:ILE:HB	1:A:102:TYR:HB2	1.76	0.68
1:A:148:ARG:HG2	1:A:209:ILE:HD11	1.78	0.66
1:B:243:ILE:HD12	1:B:278:LEU:HD11	1.78	0.64
1:B:122:SER:O	1:B:125:NEP:N	2.32	0.62
1:B:247:PRO:HB2	1:B:252:LEU:HG	1.82	0.61
1:A:56:ILE:HG22	1:A:58:PRO:HD3	1.83	0.60
1:B:329:PHE:O	4:B:519:HOH:O	2.17	0.57
1:A:126:ILE:HD13	1:A:222:LEU:HD23	1.86	0.56
1:A:53:ILE:HG12	1:A:104:VAL:HG22	1.88	0.54
1:B:90:ILE:HB	1:B:102:TYR:HB2	1.89	0.54
1:A:203:LYS:HE2	1:A:206:THR:HG21	1.91	0.53
1:B:148:ARG:HG2	1:B:209:ILE:HD11	1.91	0.52
1:B:56:ILE:HG22	1:B:58:PRO:HD3	1.92	0.51
1:B:338:LEU:HD12	1:B:339:PRO:HD2	1.93	0.50
1:A:158:ASN:HB2	1:A:162:ASP:HB3	1.94	0.49
1:B:80:HIS:HB3	1:B:83:ILE:HG12	1.95	0.48
1:B:34:GLY:O	1:B:36:TYR:N	2.47	0.48
1:B:244:LEU:HA	1:B:272:LYS:HD2	1.96	0.47
1:B:31:ILE:HD12	1:B:39:VAL:HG12	1.94	0.47
1:A:257:ASN:HB3	1:A:260:ALA:HB3	1.97	0.46
1:B:110:THR:OG1	1:B:111:ASP:N	2.49	0.46
1:A:31:ILE:HD11	1:A:41:SER:HB3	1.97	0.46
1:A:18:VAL:O	1:A:55:LYS:NZ	2.46	0.46
1:A:91:ARG:HD3	1:A:351:THR:OG1	2.16	0.45
1:B:25:TYR:HB3	1:B:42:ALA:HB1	1.99	0.45
1:B:14:VAL:HG13	1:B:15:ARG:H	1.82	0.45
1:B:241:LEU:HD11	1:B:264:LEU:HD13	1.97	0.44
1:A:274:PRO:HG2	1:A:277:ARG:HD3	1.98	0.44
1:B:331:PHE:HB2	1:B:334:GLU:HB2	1.98	0.44
1:B:105:GLN:OE1	2:B:401:EMU:H8	2.18	0.44
1:B:53:ILE:HG12	1:B:104:VAL:HG22	2.01	0.43
1:B:68:THR:O	1:B:72:ILE:HG12	2.18	0.43
1:B:71:GLU:HG3	1:B:168:PHE:HB2	2.01	0.43
1:A:223:SER:O	1:A:225:ARG:NH1	2.51	0.43
1:A:17:GLN:HB3	1:A:55:LYS:HZ3	1.84	0.42
1:B:149:ASP:HB2	1:B:170:LEU:HD12	2.01	0.42
1:B:91:ARG:HD2	1:B:98:MET:SD	2.60	0.41
1:B:203:LYS:HE2	1:B:205:TYR:CE2	2.55	0.41
1:A:84:ILE:HD12	1:A:164:LYS:HD3	2.03	0.41
1:A:146:LEU:HD22	1:A:207:LYS:HA	2.02	0.41

Continued on next page...

Continued from previous page...

Atom-1	Atom-2	Interatomic distance (Å)	Clash overlap (Å)
1:A:201:ASN:HB3	1:A:256:ILE:H	1.86	0.41
1:A:252:LEU:HG	1:A:261:ARG:HD2	2.02	0.41
1:B:146:LEU:HD22	1:B:207:LYS:HA	2.02	0.41
1:B:206:THR:O	1:B:209:ILE:HG12	2.21	0.41
1:A:241:LEU:HD11	1:A:264:LEU:HD22	2.03	0.41
1:A:259:LYS:HE3	1:A:259:LYS:HB2	1.94	0.40
1:B:148:ARG:NH1	1:B:170:LEU:O	2.42	0.40
1:B:66:GLN:HE21	1:B:70:ARG:HH22	1.69	0.40
1:B:59:PHE:HA	1:B:65:CYS:SG	2.62	0.40
1:B:66:GLN:HE21	1:B:70:ARG:NH2	2.19	0.40

There are no symmetry-related clashes.

5.3 Torsion angles ⓘ

5.3.1 Protein backbone ⓘ

In the following table, the Percentiles column shows the percent Ramachandran outliers of the chain as a percentile score with respect to all X-ray entries followed by that with respect to entries of similar resolution.

The Analysed column shows the number of residues for which the backbone conformation was analysed, and the total number of residues.

Mol	Chain	Analysed	Favoured	Allowed	Outliers	Percentiles	
1	A	337/369 (91%)	312 (93%)	24 (7%)	1 (0%)	37	61
1	B	336/369 (91%)	303 (90%)	28 (8%)	5 (2%)	8	22
All	All	673/738 (91%)	615 (91%)	52 (8%)	6 (1%)	14	35

All (6) Ramachandran outliers are listed below:

Mol	Chain	Res	Type
1	A	17	GLN
1	B	35	ALA
1	B	183	PHE
1	B	331	PHE
1	B	17	GLN
1	B	14	VAL

5.3.2 Protein sidechains ⓘ

In the following table, the Percentiles column shows the percent sidechain outliers of the chain as a percentile score with respect to all X-ray entries followed by that with respect to entries of similar resolution.

The Analysed column shows the number of residues for which the sidechain conformation was analysed, and the total number of residues.

Mol	Chain	Analysed	Rotameric	Outliers	Percentiles	
1	A	309/325 (95%)	303 (98%)	6 (2%)	52	79
1	B	310/325 (95%)	306 (99%)	4 (1%)	65	85
All	All	619/650 (95%)	609 (98%)	10 (2%)	58	82

All (10) residues with a non-rotameric sidechain are listed below:

Mol	Chain	Res	Type
1	A	19	PHE
1	A	48	LYS
1	A	91	ARG
1	A	178	HIS
1	A	187	TYR
1	A	233	TYR
1	B	91	ARG
1	B	129	PHE
1	B	233	TYR
1	B	336	ASP

Sometimes sidechains can be flipped to improve hydrogen bonding and reduce clashes. All (1) such sidechains are listed below:

Mol	Chain	Res	Type
1	B	297	ASN

5.3.3 RNA ⓘ

There are no RNA molecules in this entry.

5.4 Non-standard residues in protein, DNA, RNA chains ⓘ

2 non-standard protein/DNA/RNA residues are modelled in this entry.

In the following table, the Counts columns list the number of bonds (or angles) for which Mogul

statistics could be retrieved, the number of bonds (or angles) that are observed in the model and the number of bonds (or angles) that are defined in the Chemical Component Dictionary. The Link column lists molecule types, if any, to which the group is linked. The Z score for a bond length (or angle) is the number of standard deviations the observed value is removed from the expected value. A bond length (or angle) with $|Z| > 2$ is considered an outlier worth inspection. RMSZ is the root-mean-square of all Z scores of the bond lengths (or angles).

Mol	Type	Chain	Res	Link	Bond lengths			Bond angles		
					Counts	RMSZ	# Z > 2	Counts	RMSZ	# Z > 2
1	NEP	B	125	1	11,14,15	2.00	4 (36%)	4,20,22	2.17	2 (50%)
1	NEP	A	125	1	11,14,15	5.24	5 (45%)	4,20,22	4.73	3 (75%)

In the following table, the Chirals column lists the number of chiral outliers, the number of chiral centers analysed, the number of these observed in the model and the number defined in the Chemical Component Dictionary. Similar counts are reported in the Torsion and Rings columns. '-' means no outliers of that kind were identified.

Mol	Type	Chain	Res	Link	Chirals	Torsions	Rings
1	NEP	B	125	1	-	2/5/12/14	0/1/1/1
1	NEP	A	125	1	-	2/5/12/14	0/1/1/1

All (9) bond length outliers are listed below:

Mol	Chain	Res	Type	Atoms	Z	Observed(Å)	Ideal(Å)
1	A	125	NEP	P-O3P	15.94	1.61	1.47
1	A	125	NEP	P-O1P	-4.09	1.46	1.54
1	B	125	NEP	P-NE2	-3.34	1.59	1.76
1	A	125	NEP	P-NE2	-3.28	1.59	1.76
1	B	125	NEP	P-O1P	3.09	1.61	1.54
1	B	125	NEP	CD2-CG	2.88	1.40	1.36
1	B	125	NEP	P-O2P	2.85	1.60	1.54
1	A	125	NEP	P-O2P	2.77	1.60	1.54
1	A	125	NEP	CD2-CG	2.74	1.40	1.36

All (5) bond angle outliers are listed below:

Mol	Chain	Res	Type	Atoms	Z	Observed(°)	Ideal(°)
1	A	125	NEP	O2P-P-O3P	-8.65	95.59	113.76
1	B	125	NEP	O1P-P-O2P	-3.29	93.63	106.57
1	A	125	NEP	O1P-P-O2P	2.60	116.78	106.57
1	A	125	NEP	O1P-P-O3P	-2.56	108.39	113.76
1	B	125	NEP	O1P-P-O3P	-2.04	109.48	113.76

There are no chirality outliers.

All (4) torsion outliers are listed below:

Mol	Chain	Res	Type	Atoms
1	A	125	NEP	CA-CB-CG-ND1
1	A	125	NEP	CA-CB-CG-CD2
1	B	125	NEP	CA-CB-CG-ND1
1	B	125	NEP	CA-CB-CG-CD2

There are no ring outliers.

1 monomer is involved in 1 short contact:

Mol	Chain	Res	Type	Clashes	Symm-Clashes
1	B	125	NEP	1	0

5.5 Carbohydrates [i](#)

There are no oligosaccharides in this entry.

5.6 Ligand geometry [i](#)

4 ligands are modelled in this entry.

In the following table, the Counts columns list the number of bonds (or angles) for which Mogul statistics could be retrieved, the number of bonds (or angles) that are observed in the model and the number of bonds (or angles) that are defined in the Chemical Component Dictionary. The Link column lists molecule types, if any, to which the group is linked. The Z score for a bond length (or angle) is the number of standard deviations the observed value is removed from the expected value. A bond length (or angle) with $|Z| > 2$ is considered an outlier worth inspection. RMSZ is the root-mean-square of all Z scores of the bond lengths (or angles).

Mol	Type	Chain	Res	Link	Bond lengths			Bond angles		
					Counts	RMSZ	$\# Z > 2$	Counts	RMSZ	$\# Z > 2$
3	IMD	B	402	-	3,5,5	0.37	0	4,5,5	0.90	0
3	IMD	A	402	-	3,5,5	0.41	0	4,5,5	0.61	0
2	EMU	A	401	-	16,19,19	1.27	3 (18%)	14,25,25	2.29	4 (28%)
2	EMU	B	401	-	16,19,19	1.31	3 (18%)	14,25,25	2.17	3 (21%)

In the following table, the Chirals column lists the number of chiral outliers, the number of chiral centers analysed, the number of these observed in the model and the number defined in the Chemical Component Dictionary. Similar counts are reported in the Torsion and Rings columns. '-' means no outliers of that kind were identified.

Mol	Type	Chain	Res	Link	Chirals	Torsions	Rings
3	IMD	B	402	-	-	-	0/1/1/1
3	IMD	A	402	-	-	-	0/1/1/1
2	EMU	A	401	-	-	2/5/5/5	0/3/3/3
2	EMU	B	401	-	-	2/5/5/5	0/3/3/3

All (6) bond length outliers are listed below:

Mol	Chain	Res	Type	Atoms	Z	Observed(Å)	Ideal(Å)
2	B	401	EMU	C6-N10	3.41	1.40	1.34
2	A	401	EMU	C6-C5	-3.36	1.39	1.44
2	B	401	EMU	C6-C5	-3.01	1.40	1.44
2	A	401	EMU	C6-N10	2.80	1.39	1.34
2	A	401	EMU	C4-N3	-2.25	1.34	1.37
2	B	401	EMU	C4-N3	-2.19	1.34	1.37

All (7) bond angle outliers are listed below:

Mol	Chain	Res	Type	Atoms	Z	Observed(°)	Ideal(°)
2	B	401	EMU	C2-N1-C6	5.82	121.11	116.60
2	A	401	EMU	C2-N1-C6	5.71	121.03	116.60
2	A	401	EMU	N3-C2-N1	-4.60	122.42	128.67
2	B	401	EMU	N3-C2-N1	-4.22	122.95	128.67
2	B	401	EMU	C4-C5-N7	-3.20	105.96	109.34
2	A	401	EMU	C4-C5-N7	-2.85	106.33	109.34
2	A	401	EMU	C9-N10-C6	-2.55	119.70	123.05

There are no chirality outliers.

All (4) torsion outliers are listed below:

Mol	Chain	Res	Type	Atoms
2	A	401	EMU	N1-C6-N10-C9
2	B	401	EMU	N1-C6-N10-C9
2	A	401	EMU	C5-C6-N10-C9
2	B	401	EMU	C5-C6-N10-C9

There are no ring outliers.

1 monomer is involved in 1 short contact:

Mol	Chain	Res	Type	Clashes	Symm-Clashes
2	B	401	EMU	1	0

5.7 Other polymers [i](#)

There are no such residues in this entry.

5.8 Polymer linkage issues [i](#)

The following chains have linkage breaks:

Mol	Chain	Number of breaks
1	B	1
1	A	1

All chain breaks are listed below:

Model	Chain	Residue-1	Atom-1	Residue-2	Atom-2	Distance (Å)
1	B	124:ASP	C	125:NEP	N	2.97
1	A	124:ASP	C	125:NEP	N	2.91

6 Fit of model and data

6.1 Protein, DNA and RNA chains

In the following table, the column labelled ‘#RSRZ > 2’ contains the number (and percentage) of RSRZ outliers, followed by percent RSRZ outliers for the chain as percentile scores relative to all X-ray entries and entries of similar resolution. The OWAB column contains the minimum, median, 95th percentile and maximum values of the occupancy-weighted average B-factor per residue. The column labelled ‘Q < 0.9’ lists the number of (and percentage) of residues with an average occupancy less than 0.9.

Mol	Chain	Analysed	<RSRZ>	#RSRZ>2	OWAB(Å ²)	Q<0.9
1	A	342/369 (92%)	0.12	29 (8%) 18 17	28, 57, 136, 246	0
1	B	343/369 (92%)	0.48	33 (9%) 15 14	34, 69, 168, 206	0
All	All	685/738 (92%)	0.30	62 (9%) 16 15	28, 62, 151, 246	0

All (62) RSRZ outliers are listed below:

Mol	Chain	Res	Type	RSRZ
1	B	260	ALA	6.6
1	B	252	LEU	5.9
1	B	183	PHE	5.1
1	B	259	LYS	5.0
1	B	184	LEU	5.0
1	B	182	GLY	4.6
1	B	258	LEU	4.5
1	A	263	TYR	4.4
1	A	181	THR	4.4
1	A	36	TYR	4.3
1	B	255	ILE	4.2
1	B	262	ASN	4.1
1	A	183	PHE	4.1
1	A	184	LEU	4.1
1	A	14	VAL	4.0
1	A	203	LYS	4.0
1	B	265	LEU	4.0
1	B	36	TYR	3.8
1	A	258	LEU	3.7
1	B	357	GLY	3.6
1	B	185	THR	3.6
1	B	264	LEU	3.6
1	B	204	GLY	3.6
1	A	204	GLY	3.5

Continued on next page...

Continued from previous page...

Mol	Chain	Res	Type	RSRZ
1	B	256	ILE	3.5
1	A	336	ASP	3.5
1	B	14	VAL	3.5
1	B	331	PHE	3.5
1	B	335	LEU	3.4
1	A	13	MET	3.4
1	B	35	ALA	3.3
1	A	187	TYR	3.2
1	A	256	ILE	3.2
1	A	188	VAL	3.1
1	A	180	HIS	3.1
1	A	35	ALA	3.0
1	A	182	GLY	3.0
1	B	248	SER	2.9
1	A	16	GLY	2.8
1	A	260	ALA	2.8
1	A	15	ARG	2.7
1	A	185	THR	2.7
1	A	178	HIS	2.7
1	B	186	GLU	2.6
1	A	264	LEU	2.6
1	B	181	THR	2.5
1	B	188	VAL	2.5
1	B	247	PRO	2.5
1	B	61	HIS	2.5
1	A	262	ASN	2.4
1	B	330	LYS	2.4
1	A	254	CYS	2.3
1	B	178	HIS	2.2
1	B	49	VAL	2.2
1	A	265	LEU	2.2
1	A	259	LYS	2.2
1	B	333	MET	2.2
1	A	34	GLY	2.2
1	B	203	LYS	2.1
1	B	64	TYR	2.1
1	A	37	GLY	2.1
1	B	187	TYR	2.1

6.2 Non-standard residues in protein, DNA, RNA chains [i](#)

In the following table, the Atoms column lists the number of modelled atoms in the group and the number defined in the chemical component dictionary. The B-factors column lists the minimum, median, 95th percentile and maximum values of B factors of atoms in the group. The column labelled 'Q< 0.9' lists the number of atoms with occupancy less than 0.9.

Mol	Type	Chain	Res	Atoms	RSCC	RSR	B-factors(Å ²)	Q<0.9
1	NEP	B	125	14/15	0.92	0.10	44,48,53,59	0
1	NEP	A	125	14/15	0.93	0.09	36,43,52,52	0

6.3 Carbohydrates [i](#)

There are no monosaccharides in this entry.

6.4 Ligands [i](#)

In the following table, the Atoms column lists the number of modelled atoms in the group and the number defined in the chemical component dictionary. The B-factors column lists the minimum, median, 95th percentile and maximum values of B factors of atoms in the group. The column labelled 'Q< 0.9' lists the number of atoms with occupancy less than 0.9.

Mol	Type	Chain	Res	Atoms	RSCC	RSR	B-factors(Å ²)	Q<0.9
3	IMD	B	402	5/5	0.79	0.24	117,117,119,120	0
3	IMD	A	402	5/5	0.84	0.23	95,96,99,99	0
2	EMU	B	401	17/17	0.86	0.16	94,98,111,111	0
2	EMU	A	401	17/17	0.90	0.12	64,69,89,89	0

6.5 Other polymers [i](#)

There are no such residues in this entry.