



Full wwPDB X-ray Structure Validation Report ⓘ

Jun 12, 2024 – 01:45 AM EDT

PDB ID : 2QLP
Title : Bifunctional dCTP deaminase:dUTPase from Mycobacterium tuberculosis, apo form
Authors : Christophersen, S.; Harris, P.; Willemoes, M.
Deposited on : 2007-07-13
Resolution : 2.47 Å(reported)

This is a Full wwPDB X-ray Structure Validation Report for a publicly released PDB entry.

We welcome your comments at validation@mail.wwpdb.org

A user guide is available at

<https://www.wwpdb.org/validation/2017/XrayValidationReportHelp>

with specific help available everywhere you see the ⓘ symbol.

The types of validation reports are described at

<http://www.wwpdb.org/validation/2017/FAQs#types>.

The following versions of software and data (see [references ⓘ](#)) were used in the production of this report:

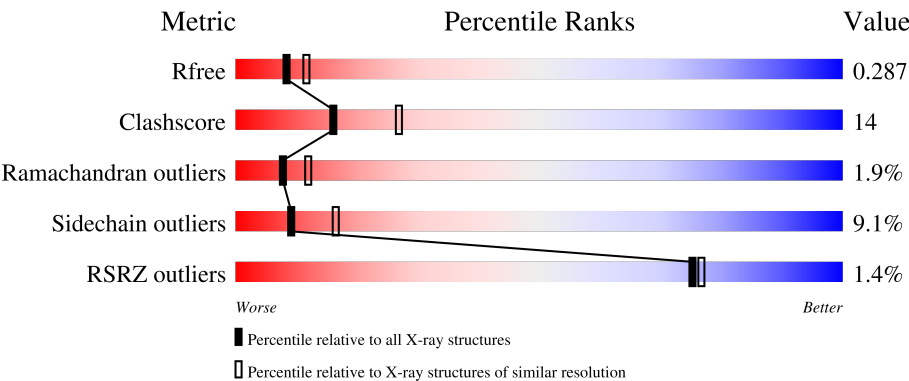
MolProbity	:	4.02b-467
Mogul	:	2022.3.0, CSD as543be (2022)
Xtriage (Phenix)	:	1.20.1
EDS	:	2.36.2
Percentile statistics	:	20191225.v01 (using entries in the PDB archive December 25th 2019)
Refmac	:	5.8.0158
CCP4	:	7.0.044 (Gargrove)
Ideal geometry (proteins)	:	Engh & Huber (2001)
Ideal geometry (DNA, RNA)	:	Parkinson et al. (1996)
Validation Pipeline (wwPDB-VP)	:	2.36.2

1 Overall quality at a glance i

The following experimental techniques were used to determine the structure:
X-RAY DIFFRACTION

The reported resolution of this entry is 2.47 Å.

Percentile scores (ranging between 0-100) for global validation metrics of the entry are shown in the following graphic. The table shows the number of entries on which the scores are based.



Metric	Whole archive (#Entries)	Similar resolution (#Entries, resolution range(Å))
R_{free}	130704	5857 (2.50-2.46)
Clashscore	141614	6594 (2.50-2.46)
Ramachandran outliers	138981	6469 (2.50-2.46)
Sidechain outliers	138945	6471 (2.50-2.46)
RSRZ outliers	127900	5738 (2.50-2.46)

The table below summarises the geometric issues observed across the polymeric chains and their fit to the electron density. The red, orange, yellow and green segments of the lower bar indicate the fraction of residues that contain outliers for ≥ 3 , 2, 1 and 0 types of geometric quality criteria respectively. A grey segment represents the fraction of residues that are not modelled. The numeric value for each fraction is indicated below the corresponding segment, with a dot representing fractions $\leq 5\%$. The upper red bar (where present) indicates the fraction of residues that have poor fit to the electron density. The numeric value is given above the bar.

Mol	Chain	Length	Quality of chain
1	A	161	
1	B	161	
1	C	161	
1	D	161	
1	E	161	

Continued on next page...

Continued from previous page...

Mol	Chain	Length	Quality of chain
1	F	161	<div><div><div>%</div><div><div></div><div>68%</div><div>25%</div><div></div></div><div><div></div><div></div><div></div></div></div></div>

2 Entry composition [i](#)

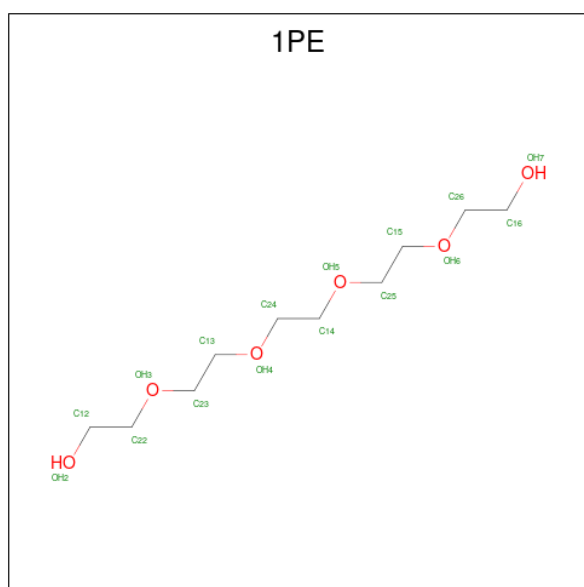
There are 3 unique types of molecules in this entry. The entry contains 7555 atoms, of which 0 are hydrogens and 0 are deuteriums.

In the tables below, the ZeroOcc column contains the number of atoms modelled with zero occupancy, the AltConf column contains the number of residues with at least one atom in alternate conformation and the Trace column contains the number of residues modelled with at most 2 atoms.

- Molecule 1 is a protein called Deoxycytidine triphosphate deaminase.

Mol	Chain	Residues	Atoms					ZeroOcc	AltConf	Trace
1	A	161	Total	C	N	O	S	0	0	0
			1241	787	212	237	5			
1	B	159	Total	C	N	O	S	0	0	0
			1224	776	208	235	5			
1	C	159	Total	C	N	O	S	0	0	0
			1224	776	208	235	5			
1	D	160	Total	C	N	O	S	0	0	0
			1234	782	211	236	5			
1	E	159	Total	C	N	O	S	0	0	0
			1224	776	208	235	5			
1	F	158	Total	C	N	O	S	0	0	0
			1215	771	207	232	5			

- Molecule 2 is PENTAETHYLENE GLYCOL (three-letter code: 1PE) (formula: $C_{10}H_{22}O_6$).



Mol	Chain	Residues	Atoms	ZeroOcc	AltConf
2	A	1	Total C O 11 7 4	0	0
2	A	1	Total C O 7 4 3	0	0
2	B	1	Total C O 11 7 4	0	0
2	C	1	Total C O 11 7 4	0	0
2	D	1	Total C O 11 7 4	0	0
2	E	1	Total C O 11 7 4	0	0
2	F	1	Total C O 11 7 4	0	0

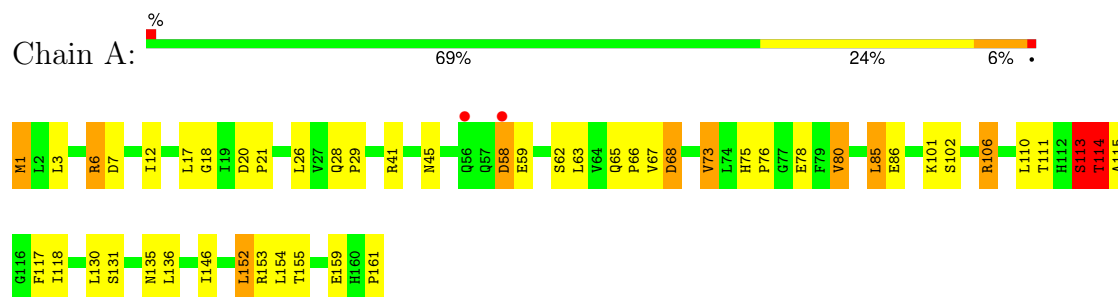
- Molecule 3 is water.

Mol	Chain	Residues	Atoms	ZeroOcc	AltConf
3	A	20	Total O 20 20	0	0
3	B	18	Total O 18 18	0	0
3	C	23	Total O 23 23	0	0
3	D	15	Total O 15 15	0	0
3	E	22	Total O 22 22	0	0
3	F	22	Total O 22 22	0	0

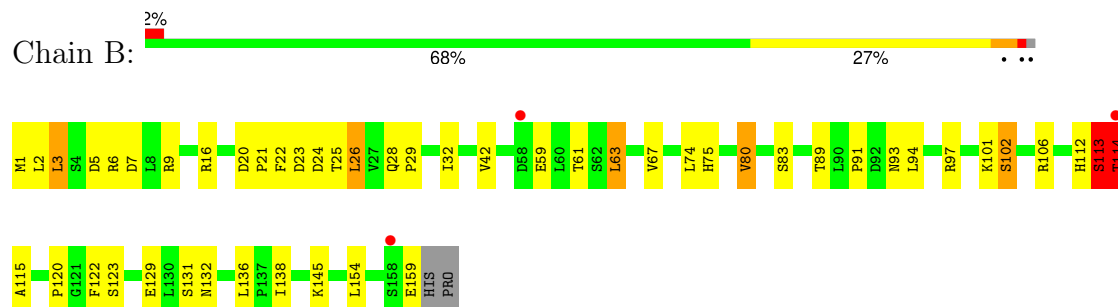
3 Residue-property plots [i](#)

These plots are drawn for all protein, RNA, DNA and oligosaccharide chains in the entry. The first graphic for a chain summarises the proportions of the various outlier classes displayed in the second graphic. The second graphic shows the sequence view annotated by issues in geometry and electron density. Residues are color-coded according to the number of geometric quality criteria for which they contain at least one outlier: green = 0, yellow = 1, orange = 2 and red = 3 or more. A red dot above a residue indicates a poor fit to the electron density ($RSRZ > 2$). Stretches of 2 or more consecutive residues without any outlier are shown as a green connector. Residues present in the sample, but not in the model, are shown in grey.

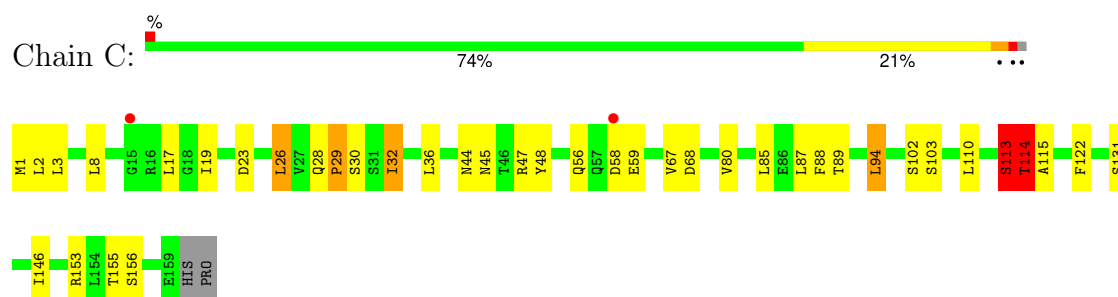
- Molecule 1: Deoxycytidine triphosphate deaminase



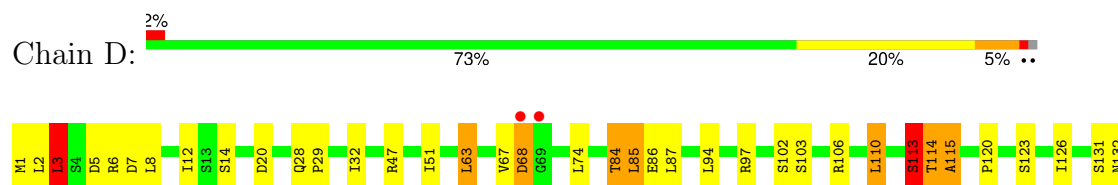
- Molecule 1: Deoxycytidine triphosphate deaminase

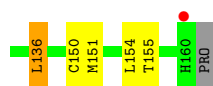


- Molecule 1: Deoxycytidine triphosphate deaminase



- Molecule 1: Deoxycytidine triphosphate deaminase

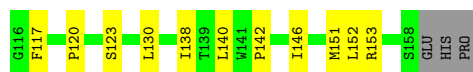
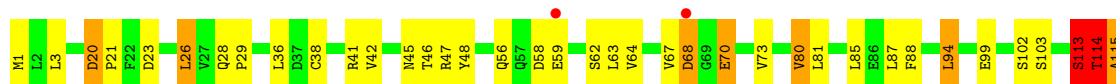




- Molecule 1: Deoxycytidine triphosphate deaminase



- Molecule 1: Deoxycytidine triphosphate deaminase



4 Data and refinement statistics

Property	Value	Source
Space group	P 1 21 1	Depositor
Cell constants a, b, c, α , β , γ	62.80Å 96.70Å 78.00Å 90.00° 97.70° 90.00°	Depositor
Resolution (Å)	19.90 – 2.47 19.76 – 2.47	Depositor EDS
% Data completeness (in resolution range)	100.0 (19.90-2.47) 98.0 (19.76-2.47)	Depositor EDS
R_{merge}	0.19	Depositor
R_{sym}	(Not available)	Depositor
$\langle I/\sigma(I) \rangle$ ¹	1.48 (at 2.47Å)	Xtriage
Refinement program	REFMAC	Depositor
R, R_{free}	0.228 , 0.295 0.227 , 0.287	Depositor DCC
R_{free} test set	1626 reflections (5.00%)	wwPDB-VP
Wilson B-factor (Å ²)	22.8	Xtriage
Anisotropy	0.373	Xtriage
Bulk solvent k_{sol} (e/Å ³), B_{sol} (Å ²)	0.35 , 33.3	EDS
L-test for twinning ²	$\langle L \rangle = 0.47$, $\langle L^2 \rangle = 0.30$	Xtriage
Estimated twinning fraction	No twinning to report.	Xtriage
F_o, F_c correlation	0.90	EDS
Total number of atoms	7555	wwPDB-VP
Average B, all atoms (Å ²)	19.0	wwPDB-VP

Xtriage's analysis on translational NCS is as follows: *The largest off-origin peak in the Patterson function is 5.15% of the height of the origin peak. No significant pseudotranslation is detected.*

¹Intensities estimated from amplitudes.

²Theoretical values of $\langle |L| \rangle$, $\langle L^2 \rangle$ for acentric reflections are 0.5, 0.333 respectively for untwinned datasets, and 0.375, 0.2 for perfectly twinned datasets.

5 Model quality

5.1 Standard geometry

Bond lengths and bond angles in the following residue types are not validated in this section: 1PE

The Z score for a bond length (or angle) is the number of standard deviations the observed value is removed from the expected value. A bond length (or angle) with $|Z| > 5$ is considered an outlier worth inspection. RMSZ is the root-mean-square of all Z scores of the bond lengths (or angles).

Mol	Chain	Bond lengths		Bond angles	
		RMSZ	$\# Z > 5$	RMSZ	$\# Z > 5$
1	A	0.52	0/1268	0.73	2/1725 (0.1%)
1	B	0.55	0/1249	0.78	2/1698 (0.1%)
1	C	0.53	0/1249	0.75	2/1698 (0.1%)
1	D	0.52	0/1260	0.74	2/1713 (0.1%)
1	E	0.53	0/1249	0.72	2/1698 (0.1%)
1	F	0.55	0/1240	0.74	2/1686 (0.1%)
All	All	0.53	0/7515	0.75	12/10218 (0.1%)

Chiral center outliers are detected by calculating the chiral volume of a chiral center and verifying if the center is modelled as a planar moiety or with the opposite hand. A planarity outlier is detected by checking planarity of atoms in a peptide group, atoms in a mainchain group or atoms of a sidechain that are expected to be planar.

Mol	Chain	#Chirality outliers	#Planarity outliers
1	A	0	1
1	E	0	1
1	F	0	1
All	All	0	3

There are no bond length outliers.

All (12) bond angle outliers are listed below:

Mol	Chain	Res	Type	Atoms	Z	Observed(°)	Ideal(°)
1	F	114	THR	N-CA-CB	7.09	123.77	110.30
1	A	113	SER	C-N-CA	6.93	139.03	121.70
1	F	113	SER	C-N-CA	6.78	138.66	121.70
1	E	113	SER	C-N-CA	6.61	138.23	121.70
1	B	113	SER	C-N-CA	6.48	137.89	121.70
1	E	114	THR	N-CA-CB	6.46	122.58	110.30
1	D	113	SER	C-N-CA	6.45	137.83	121.70

Continued on next page...

Continued from previous page...

Mol	Chain	Res	Type	Atoms	Z	Observed(°)	Ideal(°)
1	C	113	SER	C-N-CA	6.42	137.76	121.70
1	C	114	THR	N-CA-CB	6.34	122.34	110.30
1	A	114	THR	N-CA-CB	6.30	122.27	110.30
1	B	114	THR	N-CA-CB	6.23	122.14	110.30
1	D	3	LEU	CA-CB-CG	5.50	127.95	115.30

There are no chirality outliers.

All (3) planarity outliers are listed below:

Mol	Chain	Res	Type	Group
1	A	113	SER	Peptide
1	E	113	SER	Peptide
1	F	113	SER	Peptide

5.2 Too-close contacts ⓘ

In the following table, the Non-H and H(model) columns list the number of non-hydrogen atoms and hydrogen atoms in the chain respectively. The H(added) column lists the number of hydrogen atoms added and optimized by MolProbity. The Clashes column lists the number of clashes within the asymmetric unit, whereas Symm-Clashes lists symmetry-related clashes.

Mol	Chain	Non-H	H(model)	H(added)	Clashes	Symm-Clashes
1	A	1241	0	1242	54	0
1	B	1224	0	1228	44	0
1	C	1224	0	1228	41	0
1	D	1234	0	1235	41	0
1	E	1224	0	1228	38	0
1	F	1215	0	1222	44	0
2	A	18	0	22	2	0
2	B	11	0	13	0	0
2	C	11	0	13	1	0
2	D	11	0	13	0	0
2	E	11	0	13	0	0
2	F	11	0	13	0	0
3	A	20	0	0	8	0
3	B	18	0	0	1	0
3	C	23	0	0	4	0
3	D	15	0	0	4	0
3	E	22	0	0	3	0
3	F	22	0	0	2	0
All	All	7555	0	7470	216	0

The all-atom clashscore is defined as the number of clashes found per 1000 atoms (including hydrogen atoms). The all-atom clashscore for this structure is 14.

All (216) close contacts within the same asymmetric unit are listed below, sorted by their clash magnitude.

Atom-1	Atom-2	Interatomic distance (Å)	Clash overlap (Å)
1:A:159:GLU:HG2	3:A:170:HOH:O	1.59	1.01
1:C:113:SER:CB	1:C:114:THR:HG23	1.92	0.99
1:D:8:LEU:O	1:D:12:ILE:HG13	1.66	0.95
1:A:135:ASN:HB3	3:C:185:HOH:O	1.65	0.94
1:D:1:MET:HA	1:F:1:MET:H1	1.29	0.94
1:C:113:SER:HB3	1:C:114:THR:HG23	1.52	0.88
1:A:110:LEU:HD23	1:C:114:THR:HG22	1.56	0.86
1:A:110:LEU:CD2	1:C:114:THR:HG22	2.07	0.84
1:C:113:SER:HB2	1:C:114:THR:HG23	1.60	0.82
1:A:1:MET:HA	1:C:1:MET:H3	1.45	0.81
1:A:110:LEU:CD2	1:C:114:THR:CG2	2.60	0.79
1:A:106:ARG:NH1	2:A:162:1PE:H232	1.98	0.79
1:D:1:MET:HA	1:F:1:MET:N	1.98	0.79
1:D:14:SER:CB	3:D:173:HOH:O	2.31	0.79
1:A:1:MET:H1	1:B:1:MET:HA	1.48	0.78
1:D:1:MET:H1	1:E:1:MET:HA	1.47	0.77
1:D:14:SER:HB2	3:D:173:HOH:O	1.83	0.77
1:A:106:ARG:HH11	2:A:162:1PE:H232	1.51	0.75
1:C:23:ASP:HA	3:C:168:HOH:O	1.85	0.75
1:A:80:VAL:HG22	1:A:130:LEU:HB2	1.68	0.75
1:B:113:SER:HB3	1:C:110:LEU:HD21	1.69	0.74
1:B:28:GLN:HB3	1:B:29:PRO:HD2	1.68	0.74
1:D:51:ILE:HG21	1:E:107:LEU:HD22	1.70	0.73
1:C:28:GLN:HB3	1:C:29:PRO:HD2	1.69	0.73
1:D:113:SER:HB2	1:D:114:THR:OG1	1.87	0.73
1:F:47:ARG:NH1	1:F:59:GLU:OE1	2.21	0.72
1:E:28:GLN:HB3	1:E:29:PRO:HD2	1.70	0.72
1:F:67:VAL:O	1:F:70:GLU:HB2	1.88	0.72
1:C:28:GLN:HG2	3:C:177:HOH:O	1.91	0.71
1:A:75:HIS:NE2	1:F:45:ASN:O	2.25	0.70
1:C:2:LEU:HD23	1:C:30:SER:HB2	1.74	0.69
1:B:16:ARG:O	1:B:91:PRO:HD3	1.93	0.69
1:D:3:LEU:HD13	1:D:7:ASP:HB3	1.73	0.69
1:A:110:LEU:HD21	1:C:114:THR:HG23	1.74	0.68
1:C:68:ASP:H	2:C:162:1PE:H132	1.58	0.67
1:A:63:LEU:CD1	3:A:164:HOH:O	2.43	0.66
1:E:85:LEU:HD23	1:E:85:LEU:O	1.95	0.66

Continued on next page...

Continued from previous page...

Atom-1	Atom-2	Interatomic distance (Å)	Clash overlap (Å)
1:A:159:GLU:O	1:A:161:PRO:HD2	1.96	0.65
1:B:28:GLN:HB3	1:B:29:PRO:CD	2.26	0.65
1:A:1:MET:HA	1:C:1:MET:N	2.11	0.65
1:A:110:LEU:HD21	1:C:114:THR:CG2	2.26	0.65
1:F:58:ASP:O	1:F:59:GLU:HB2	1.97	0.65
1:D:1:MET:CA	1:F:1:MET:H1	2.06	0.65
1:B:22:PHE:CZ	1:B:24:ASP:HA	2.33	0.64
1:A:41:ARG:HG2	3:A:164:HOH:O	1.97	0.64
1:E:85:LEU:HD23	1:E:85:LEU:C	2.19	0.64
1:A:58:ASP:HB2	1:A:59:GLU:OE2	1.98	0.63
1:D:155:THR:HG21	1:E:3:LEU:HD23	1.79	0.63
1:F:113:SER:CB	1:F:114:THR:HG23	2.29	0.63
1:C:23:ASP:HB3	1:C:26:LEU:HD22	1.80	0.62
1:C:67:VAL:HG21	1:D:47:ARG:HH21	1.64	0.62
1:C:113:SER:HB2	1:C:114:THR:CG2	2.29	0.62
1:D:154:LEU:HD23	1:D:154:LEU:N	2.16	0.61
1:A:1:MET:H1	1:B:1:MET:CA	2.15	0.60
1:F:23:ASP:HB3	1:F:26:LEU:HD22	1.84	0.60
1:F:20:ASP:OD1	1:F:20:ASP:C	2.40	0.59
1:A:1:MET:N	1:B:1:MET:HA	2.17	0.59
1:F:42:VAL:HB	3:F:179:HOH:O	2.03	0.58
1:A:113:SER:HB2	1:A:114:THR:HG23	1.84	0.58
1:B:120:PRO:HG3	1:B:154:LEU:HD11	1.86	0.58
1:B:1:MET:H1	1:C:1:MET:HA	1.69	0.57
1:B:129:GLU:O	3:B:165:HOH:O	2.18	0.57
1:D:136:LEU:N	1:D:136:LEU:HD12	2.19	0.57
1:A:110:LEU:HD21	1:C:113:SER:HB3	1.87	0.57
1:D:28:GLN:HB3	1:D:29:PRO:HD2	1.87	0.56
1:D:1:MET:N	1:E:1:MET:HA	2.19	0.56
1:F:80:VAL:HG22	1:F:130:LEU:HB2	1.88	0.56
1:D:113:SER:CB	1:D:114:THR:OG1	2.54	0.56
1:F:56:GLN:NE2	1:F:58:ASP:OD2	2.39	0.56
1:D:84:THR:HG23	1:D:126:ILE:HB	1.87	0.55
1:F:85:LEU:C	1:F:85:LEU:HD23	2.26	0.55
1:A:18:GLY:HA3	3:A:174:HOH:O	2.05	0.55
1:A:41:ARG:CG	3:A:164:HOH:O	2.54	0.55
1:A:135:ASN:ND2	1:C:45:ASN:ND2	2.53	0.55
1:E:155:THR:HG21	1:F:3:LEU:CD2	2.36	0.55
1:E:48:TYR:OH	1:E:59:GLU:HB2	2.07	0.55
1:B:114:THR:HG23	1:C:110:LEU:HD21	1.89	0.54
1:B:102:SER:O	1:B:106:ARG:HG3	2.08	0.54

Continued on next page...

Continued from previous page...

Atom-1	Atom-2	Interatomic distance (Å)	Clash overlap (Å)
1:E:28:GLN:HB3	1:E:29:PRO:CD	2.37	0.54
1:B:75:HIS:NE2	1:E:45:ASN:O	2.39	0.54
1:A:12:ILE:HG13	1:A:17:LEU:HD23	1.91	0.53
1:C:87:LEU:HD23	1:C:88:PHE:N	2.24	0.53
1:D:102:SER:O	1:D:106:ARG:HG3	2.09	0.53
1:F:68:ASP:OD2	1:F:68:ASP:N	2.34	0.53
1:A:75:HIS:CD2	1:F:45:ASN:O	2.62	0.52
1:F:113:SER:HB3	1:F:114:THR:HG23	1.91	0.52
1:F:130:LEU:HD13	1:F:140:LEU:CD1	2.39	0.52
1:A:155:THR:HG21	1:B:3:LEU:HD22	1.92	0.52
1:A:28:GLN:HB3	1:A:29:PRO:CD	2.39	0.52
1:F:113:SER:HB2	1:F:114:THR:HG23	1.91	0.52
1:A:110:LEU:CD2	1:C:114:THR:HG23	2.32	0.52
1:D:84:THR:CG2	1:D:126:ILE:HB	2.40	0.52
1:E:23:ASP:HB3	1:E:26:LEU:HD22	1.92	0.51
1:A:155:THR:OG1	1:B:7:ASP:OD2	2.16	0.51
1:A:152:LEU:CD1	1:A:152:LEU:N	2.73	0.51
3:A:178:HOH:O	1:F:47:ARG:HD2	2.10	0.51
1:D:5:ASP:OD1	1:D:6:ARG:N	2.43	0.51
1:B:132:ASN:ND2	1:B:138:ILE:HG13	2.25	0.51
1:A:6:ARG:HD3	1:C:156:SER:OG	2.11	0.50
1:B:6:ARG:HH11	1:B:6:ARG:HB3	1.75	0.50
1:A:113:SER:CB	1:A:114:THR:HG23	2.42	0.50
1:B:74:LEU:CD1	1:B:80:VAL:CG1	2.89	0.50
1:F:28:GLN:HB3	1:F:29:PRO:HD2	1.94	0.50
1:F:87:LEU:HD23	1:F:88:PHE:N	2.26	0.50
1:B:93:ASN:OD1	1:B:94:LEU:HD12	2.12	0.50
1:B:101:LYS:NZ	1:B:145:LYS:HD3	2.27	0.50
1:E:1:MET:H1	1:F:1:MET:HA	1.75	0.50
1:A:63:LEU:HD13	3:A:164:HOH:O	2.09	0.49
1:B:23:ASP:HB3	1:B:26:LEU:HD22	1.95	0.49
1:C:110:LEU:HB2	1:C:131:SER:HB2	1.93	0.49
1:E:88:PHE:CE2	1:E:149:LEU:HD23	2.47	0.49
1:B:74:LEU:HD13	1:B:80:VAL:CG1	2.43	0.49
1:C:17:LEU:HD12	1:C:89:THR:O	2.12	0.49
1:D:2:LEU:HD11	1:D:150:CYS:HB3	1.94	0.49
1:D:14:SER:HB3	3:D:173:HOH:O	2.05	0.49
1:A:117:PHE:C	1:A:118:ILE:HD13	2.32	0.49
1:D:1:MET:H1	1:E:1:MET:CA	2.21	0.49
1:F:1:MET:HB3	1:F:153:ARG:HB2	1.94	0.49
1:A:76:PRO:HG2	3:D:176:HOH:O	2.12	0.48

Continued on next page...

Continued from previous page...

Atom-1	Atom-2	Interatomic distance (Å)	Clash overlap (Å)
1:D:113:SER:HB2	1:D:114:THR:CG2	2.43	0.48
1:C:19:ILE:HD13	1:C:32:ILE:CD1	2.42	0.48
1:D:113:SER:CA	1:D:114:THR:OG1	2.61	0.48
1:E:86:GLU:HG2	3:E:172:HOH:O	2.13	0.48
1:A:159:GLU:OE1	1:B:6:ARG:NH2	2.47	0.48
1:D:51:ILE:CG2	1:E:107:LEU:HD22	2.40	0.48
1:A:45:ASN:HB2	1:B:136:LEU:HG	1.94	0.48
1:E:88:PHE:CD1	1:E:126:ILE:HD12	2.49	0.48
1:D:63:LEU:HD12	1:D:63:LEU:HA	1.64	0.48
1:B:74:LEU:HD13	1:B:80:VAL:HG11	1.96	0.48
1:F:38:CYS:HB3	1:F:142:PRO:HB3	1.95	0.48
1:C:8:LEU:HD13	1:C:32:ILE:HG22	1.97	0.47
1:D:113:SER:HB2	1:D:114:THR:HG23	1.96	0.47
1:E:85:LEU:C	1:E:85:LEU:CD2	2.83	0.47
1:D:120:PRO:HG3	1:D:154:LEU:HD11	1.96	0.47
1:B:63:LEU:HD12	1:B:63:LEU:HA	1.56	0.47
1:F:48:TYR:HA	3:F:177:HOH:O	2.14	0.47
1:B:5:ASP:OD1	1:B:5:ASP:N	2.48	0.47
1:B:113:SER:N	1:B:114:THR:OG1	2.47	0.46
1:E:113:SER:N	1:E:114:THR:OG1	2.48	0.46
1:F:114:THR:O	1:F:115:ALA:HB2	2.16	0.46
1:E:87:LEU:HD23	1:E:88:PHE:N	2.31	0.46
1:F:87:LEU:HD23	1:F:87:LEU:C	2.36	0.46
1:B:23:ASP:OD1	1:B:23:ASP:C	2.53	0.46
1:C:44:ASN:ND2	1:C:59:GLU:O	2.45	0.46
1:A:6:ARG:HG2	1:A:7:ASP:N	2.30	0.46
1:D:74:LEU:HD23	1:D:132:ASN:HB2	1.98	0.45
1:B:101:LYS:HZ1	1:B:145:LYS:HD3	1.81	0.45
1:E:6:ARG:O	1:E:6:ARG:HG3	2.16	0.45
1:A:154:LEU:HD23	1:B:2:LEU:HB3	1.98	0.45
1:B:122:PHE:CG	1:B:123:SER:N	2.84	0.45
1:B:42:VAL:O	1:B:61:THR:HA	2.17	0.45
1:E:101:LYS:HB3	1:E:101:LYS:HE3	1.59	0.45
1:C:122:PHE:HA	3:C:183:HOH:O	2.17	0.45
1:F:63:LEU:O	1:F:64:VAL:HG23	2.17	0.45
1:E:51:ILE:HG23	1:E:57:GLN:OE1	2.17	0.45
1:E:51:ILE:HD12	1:F:138:ILE:HG12	1.99	0.45
1:F:41:ARG:HB2	1:F:81:LEU:HB2	1.98	0.45
1:D:68:ASP:OD1	1:D:68:ASP:N	2.39	0.44
1:A:135:ASN:HD22	1:C:45:ASN:ND2	2.14	0.44
1:D:114:THR:O	1:D:115:ALA:HB2	2.16	0.44

Continued on next page...

Continued from previous page...

Atom-1	Atom-2	Interatomic distance (Å)	Clash overlap (Å)
1:A:65:GLN:HA	1:A:66:PRO:HD2	1.73	0.44
1:B:5:ASP:O	1:B:9:ARG:HG3	2.18	0.44
1:C:2:LEU:CD2	1:C:30:SER:HB2	2.45	0.44
1:E:113:SER:HB2	1:E:114:THR:HG23	2.00	0.44
1:A:67:VAL:HG12	1:A:68:ASP:N	2.33	0.44
1:E:48:TYR:HA	3:E:179:HOH:O	2.17	0.44
1:E:1:MET:N	1:F:1:MET:HA	2.32	0.43
1:A:73:VAL:HG23	1:F:46:THR:O	2.18	0.43
1:A:86:GLU:OE1	1:A:86:GLU:N	2.36	0.43
1:C:36:LEU:HD22	1:C:146:ILE:HD13	2.00	0.43
1:D:110:LEU:HB2	1:D:131:SER:HB2	2.00	0.43
1:F:67:VAL:O	1:F:68:ASP:C	2.56	0.43
1:B:23:ASP:O	1:B:26:LEU:HB2	2.18	0.43
1:D:85:LEU:HD23	1:D:86:GLU:N	2.34	0.43
1:F:94:LEU:HG	1:F:151:MET:HE3	1.99	0.43
1:A:85:LEU:C	1:A:85:LEU:HD23	2.39	0.43
1:B:91:PRO:HG2	1:B:94:LEU:HD13	2.00	0.43
1:A:101:LYS:HE2	1:A:101:LYS:HB3	1.76	0.43
1:A:59:GLU:OE2	1:A:59:GLU:N	2.52	0.42
1:B:23:ASP:OD1	1:B:25:THR:HG23	2.18	0.42
1:E:83:SER:C	1:E:128:LEU:HD12	2.39	0.42
1:D:29:PRO:HB2	1:F:120:PRO:HD2	2.00	0.42
1:A:136:LEU:HD21	1:C:48:TYR:HB2	2.00	0.42
1:F:99:GLU:HA	1:F:99:GLU:OE1	2.19	0.42
1:B:101:LYS:CE	1:B:145:LYS:HB3	2.49	0.42
1:E:85:LEU:O	1:E:125:HIS:HE1	2.03	0.42
1:D:113:SER:HB2	1:D:114:THR:CB	2.49	0.42
1:E:110:LEU:HB3	3:E:180:HOH:O	2.17	0.42
1:F:58:ASP:O	1:F:59:GLU:CB	2.65	0.42
1:F:3:LEU:N	1:F:3:LEU:HD23	2.34	0.42
1:B:91:PRO:HG2	1:B:94:LEU:CD1	2.50	0.42
1:B:112:HIS:CD2	1:B:112:HIS:O	2.73	0.42
1:B:113:SER:CB	1:B:114:THR:HG23	2.49	0.42
1:E:4:SER:O	1:E:8:LEU:HD12	2.20	0.42
1:E:120:PRO:CG	1:E:154:LEU:HD11	2.50	0.42
1:F:36:LEU:HD22	1:F:146:ILE:HD13	2.00	0.42
1:E:80:VAL:HG22	1:E:130:LEU:HB2	2.01	0.42
1:C:94:LEU:HD12	1:C:153:ARG:HA	2.00	0.41
1:E:93:ASN:C	1:E:94:LEU:HD12	2.40	0.41
1:F:20:ASP:HA	1:F:21:PRO:HA	1.88	0.41
1:A:111:THR:HG21	1:A:146:ILE:HG13	2.02	0.41

Continued on next page...

Continued from previous page...

Atom-1	Atom-2	Interatomic distance (Å)	Clash overlap (Å)
1:D:20:ASP:OD1	1:D:20:ASP:C	2.59	0.41
1:D:155:THR:CG2	1:E:3:LEU:HD23	2.48	0.41
1:C:3:LEU:HD11	1:C:94:LEU:HD11	2.01	0.41
1:C:8:LEU:HD13	1:C:32:ILE:CG2	2.50	0.41
1:A:78:GLU:HG2	3:A:183:HOH:O	2.21	0.41
1:E:113:SER:CA	1:E:114:THR:OG1	2.69	0.41
1:D:94:LEU:HB3	1:D:151:MET:HE3	2.01	0.41
1:D:2:LEU:HD21	1:F:117:PHE:HZ	1.86	0.41
1:E:93:ASN:O	1:E:94:LEU:HD12	2.21	0.41
1:B:6:ARG:NH1	1:B:6:ARG:CB	2.84	0.40
1:C:56:GLN:HE21	1:C:56:GLN:HB3	1.52	0.40
1:A:1:MET:HG2	1:C:155:THR:HG22	2.04	0.40
1:A:20:ASP:HA	1:A:21:PRO:HA	1.87	0.40
1:B:20:ASP:HA	1:B:21:PRO:HA	1.94	0.40
1:F:88:PHE:O	1:F:123:SER:HA	2.22	0.40

There are no symmetry-related clashes.

5.3 Torsion angles

5.3.1 Protein backbone

In the following table, the Percentiles column shows the percent Ramachandran outliers of the chain as a percentile score with respect to all X-ray entries followed by that with respect to entries of similar resolution.

The Analysed column shows the number of residues for which the backbone conformation was analysed, and the total number of residues.

Mol	Chain	Analysed	Favoured	Allowed	Outliers	Percentiles	
1	A	159/161 (99%)	152 (96%)	4 (2%)	3 (2%)	8	12
1	B	157/161 (98%)	147 (94%)	7 (4%)	3 (2%)	8	12
1	C	157/161 (98%)	150 (96%)	4 (2%)	3 (2%)	8	12
1	D	158/161 (98%)	146 (92%)	9 (6%)	3 (2%)	8	12
1	E	157/161 (98%)	150 (96%)	4 (2%)	3 (2%)	8	12
1	F	156/161 (97%)	148 (95%)	5 (3%)	3 (2%)	8	12
All	All	944/966 (98%)	893 (95%)	33 (4%)	18 (2%)	8	12

All (18) Ramachandran outliers are listed below:

Mol	Chain	Res	Type
1	A	113	SER
1	B	113	SER
1	B	114	THR
1	C	113	SER
1	D	113	SER
1	D	114	THR
1	E	113	SER
1	E	114	THR
1	F	114	THR
1	A	114	THR
1	B	115	ALA
1	C	114	THR
1	C	115	ALA
1	D	115	ALA
1	E	115	ALA
1	F	113	SER
1	F	115	ALA
1	A	115	ALA

5.3.2 Protein sidechains ⓘ

In the following table, the Percentiles column shows the percent sidechain outliers of the chain as a percentile score with respect to all X-ray entries followed by that with respect to entries of similar resolution.

The Analysed column shows the number of residues for which the sidechain conformation was analysed, and the total number of residues.

Mol	Chain	Analysed	Rotameric	Outliers	Percentiles	
1	A	142/142 (100%)	127 (89%)	15 (11%)	6	12
1	B	140/142 (99%)	127 (91%)	13 (9%)	9	15
1	C	140/142 (99%)	130 (93%)	10 (7%)	14	26
1	D	141/142 (99%)	128 (91%)	13 (9%)	9	16
1	E	140/142 (99%)	125 (89%)	15 (11%)	6	11
1	F	139/142 (98%)	128 (92%)	11 (8%)	12	22
All	All	842/852 (99%)	765 (91%)	77 (9%)	9	16

All (77) residues with a non-rotameric sidechain are listed below:

Mol	Chain	Res	Type
1	A	1	MET

Continued on next page...

Continued from previous page...

Mol	Chain	Res	Type
1	A	3	LEU
1	A	6	ARG
1	A	26	LEU
1	A	58	ASP
1	A	62	SER
1	A	68	ASP
1	A	73	VAL
1	A	80	VAL
1	A	85	LEU
1	A	102	SER
1	A	106	ARG
1	A	131	SER
1	A	152	LEU
1	A	153	ARG
1	B	3	LEU
1	B	26	LEU
1	B	32	ILE
1	B	59	GLU
1	B	63	LEU
1	B	67	VAL
1	B	80	VAL
1	B	83	SER
1	B	89	THR
1	B	97	ARG
1	B	102	SER
1	B	131	SER
1	B	159	GLU
1	C	26	LEU
1	C	29	PRO
1	C	32	ILE
1	C	47	ARG
1	C	58	ASP
1	C	80	VAL
1	C	85	LEU
1	C	94	LEU
1	C	102	SER
1	C	103	SER
1	D	3	LEU
1	D	32	ILE
1	D	63	LEU
1	D	67	VAL
1	D	68	ASP

Continued on next page...

Continued from previous page...

Mol	Chain	Res	Type
1	D	84	THR
1	D	85	LEU
1	D	87	LEU
1	D	97	ARG
1	D	103	SER
1	D	110	LEU
1	D	123	SER
1	D	136	LEU
1	E	6	ARG
1	E	8	LEU
1	E	21	PRO
1	E	26	LEU
1	E	56	GLN
1	E	67	VAL
1	E	80	VAL
1	E	83	SER
1	E	85	LEU
1	E	97	ARG
1	E	113	SER
1	E	114	THR
1	E	135	ASN
1	E	158	SER
1	E	159	GLU
1	F	20	ASP
1	F	26	LEU
1	F	62	SER
1	F	68	ASP
1	F	70	GLU
1	F	73	VAL
1	F	80	VAL
1	F	94	LEU
1	F	102	SER
1	F	103	SER
1	F	152	LEU

Sometimes sidechains can be flipped to improve hydrogen bonding and reduce clashes. All (3) such sidechains are listed below:

Mol	Chain	Res	Type
1	A	135	ASN
1	C	45	ASN
1	C	56	GLN

5.3.3 RNA ⓘ

There are no RNA molecules in this entry.

5.4 Non-standard residues in protein, DNA, RNA chains ⓘ

There are no non-standard protein/DNA/RNA residues in this entry.

5.5 Carbohydrates ⓘ

There are no monosaccharides in this entry.

5.6 Ligand geometry ⓘ

7 ligands are modelled in this entry.

In the following table, the Counts columns list the number of bonds (or angles) for which Mogul statistics could be retrieved, the number of bonds (or angles) that are observed in the model and the number of bonds (or angles) that are defined in the Chemical Component Dictionary. The Link column lists molecule types, if any, to which the group is linked. The Z score for a bond length (or angle) is the number of standard deviations the observed value is removed from the expected value. A bond length (or angle) with $|Z| > 2$ is considered an outlier worth inspection. RMSZ is the root-mean-square of all Z scores of the bond lengths (or angles).

Mol	Type	Chain	Res	Link	Bond lengths			Bond angles		
					Counts	RMSZ	$\# Z > 2$	Counts	RMSZ	$\# Z > 2$
2	1PE	C	162	-	10,10,15	0.62	0	9,9,14	0.31	0
2	1PE	D	162	-	10,10,15	0.58	0	9,9,14	0.32	0
2	1PE	F	162	-	10,10,15	0.67	0	9,9,14	0.36	0
2	1PE	B	162	-	10,10,15	0.57	0	9,9,14	0.19	0
2	1PE	A	163	-	6,6,15	0.65	0	5,5,14	0.39	0
2	1PE	E	162	-	10,10,15	0.60	0	9,9,14	0.37	0
2	1PE	A	162	-	10,10,15	0.77	0	9,9,14	0.66	0

In the following table, the Chirals column lists the number of chiral outliers, the number of chiral centers analysed, the number of these observed in the model and the number defined in the Chemical Component Dictionary. Similar counts are reported in the Torsion and Rings columns. '-' means no outliers of that kind were identified.

Mol	Type	Chain	Res	Link	Chirals	Torsions	Rings
2	1PE	C	162	-	-	4/8/8/13	-
2	1PE	D	162	-	-	4/8/8/13	-
2	1PE	F	162	-	-	6/8/8/13	-

Continued on next page...

Continued from previous page...

Mol	Type	Chain	Res	Link	Chirals	Torsions	Rings
2	1PE	B	162	-	-	5/8/8/13	-
2	1PE	A	163	-	-	2/4/4/13	-
2	1PE	E	162	-	-	5/8/8/13	-
2	1PE	A	162	-	-	4/8/8/13	-

There are no bond length outliers.

There are no bond angle outliers.

There are no chirality outliers.

All (30) torsion outliers are listed below:

Mol	Chain	Res	Type	Atoms
2	A	162	1PE	OH4-C13-C23-OH3
2	F	162	1PE	OH4-C13-C23-OH3
2	C	162	1PE	OH5-C14-C24-OH4
2	B	162	1PE	OH5-C14-C24-OH4
2	F	162	1PE	OH5-C14-C24-OH4
2	D	162	1PE	OH4-C13-C23-OH3
2	E	162	1PE	OH5-C14-C24-OH4
2	D	162	1PE	OH2-C12-C22-OH3
2	B	162	1PE	C24-C14-OH5-C25
2	F	162	1PE	OH2-C12-C22-OH3
2	B	162	1PE	C14-C24-OH4-C13
2	E	162	1PE	OH4-C13-C23-OH3
2	F	162	1PE	C24-C14-OH5-C25
2	A	162	1PE	C24-C14-OH5-C25
2	E	162	1PE	C14-C24-OH4-C13
2	F	162	1PE	C13-C23-OH3-C22
2	E	162	1PE	C24-C14-OH5-C25
2	C	162	1PE	C13-C23-OH3-C22
2	D	162	1PE	C13-C23-OH3-C22
2	A	163	1PE	OH2-C12-C22-OH3
2	B	162	1PE	C13-C23-OH3-C22
2	E	162	1PE	OH2-C12-C22-OH3
2	A	162	1PE	OH2-C12-C22-OH3
2	A	162	1PE	C14-C24-OH4-C13
2	F	162	1PE	C14-C24-OH4-C13
2	C	162	1PE	C24-C14-OH5-C25
2	C	162	1PE	C12-C22-OH3-C23
2	A	163	1PE	C13-C23-OH3-C22
2	D	162	1PE	C24-C14-OH5-C25

Continued on next page...

Continued from previous page...

Mol	Chain	Res	Type	Atoms
2	B	162	1PE	OH2-C12-C22-OH3

There are no ring outliers.

2 monomers are involved in 3 short contacts:

Mol	Chain	Res	Type	Clashes	Symm-Clashes
2	C	162	1PE	1	0
2	A	162	1PE	2	0

5.7 Other polymers [i](#)

There are no such residues in this entry.

5.8 Polymer linkage issues [i](#)

There are no chain breaks in this entry.

6 Fit of model and data [i](#)

6.1 Protein, DNA and RNA chains [i](#)

In the following table, the column labelled ‘#RSRZ> 2’ contains the number (and percentage) of RSRZ outliers, followed by percent RSRZ outliers for the chain as percentile scores relative to all X-ray entries and entries of similar resolution. The OWAB column contains the minimum, median, 95th percentile and maximum values of the occupancy-weighted average B-factor per residue. The column labelled ‘Q< 0.9’ lists the number of (and percentage) of residues with an average occupancy less than 0.9.

Mol	Chain	Analysed	<RSRZ>	#RSRZ>2	OWAB(Å ²)	Q<0.9
1	A	161/161 (100%)	-0.09	2 (1%) 79 80	7, 18, 30, 36	0
1	B	159/161 (98%)	0.10	3 (1%) 66 68	10, 18, 31, 38	0
1	C	159/161 (98%)	-0.10	2 (1%) 77 78	7, 18, 28, 34	0
1	D	160/161 (99%)	-0.03	3 (1%) 66 68	9, 18, 34, 44	0
1	E	159/161 (98%)	-0.04	1 (0%) 89 90	7, 18, 34, 40	0
1	F	158/161 (98%)	-0.10	2 (1%) 77 78	10, 18, 34, 40	0
All	All	956/966 (98%)	-0.04	13 (1%) 75 77	7, 18, 32, 44	0

All (13) RSRZ outliers are listed below:

Mol	Chain	Res	Type	RSRZ
1	D	68	ASP	4.7
1	B	158	SER	3.6
1	A	58	ASP	3.4
1	C	58	ASP	2.8
1	E	68	ASP	2.6
1	D	69	GLY	2.6
1	D	160	HIS	2.5
1	B	114	THR	2.3
1	A	56	GLN	2.2
1	C	15	GLY	2.2
1	F	59	GLU	2.1
1	B	58	ASP	2.1
1	F	68	ASP	2.0

6.2 Non-standard residues in protein, DNA, RNA chains [i](#)

There are no non-standard protein/DNA/RNA residues in this entry.

6.3 Carbohydrates [i](#)

There are no monosaccharides in this entry.

6.4 Ligands [i](#)

In the following table, the Atoms column lists the number of modelled atoms in the group and the number defined in the chemical component dictionary. The B-factors column lists the minimum, median, 95th percentile and maximum values of B factors of atoms in the group. The column labelled 'Q< 0.9' lists the number of atoms with occupancy less than 0.9.

Mol	Type	Chain	Res	Atoms	RSCC	RSR	B-factors(\AA^2)	Q<0.9
2	1PE	F	162	11/16	0.77	0.19	34,35,37,37	0
2	1PE	A	163	7/16	0.82	0.15	20,22,23,24	0
2	1PE	B	162	11/16	0.88	0.20	24,25,27,27	0
2	1PE	E	162	11/16	0.89	0.15	16,19,22,22	0
2	1PE	C	162	11/16	0.89	0.17	29,30,31,31	0
2	1PE	A	162	11/16	0.90	0.13	16,19,21,22	0
2	1PE	D	162	11/16	0.93	0.12	17,19,20,20	0

6.5 Other polymers [i](#)

There are no such residues in this entry.