



wwPDB X-ray Structure Validation Summary Report ⓘ

Mar 27, 2025 – 06:15 pm GMT

PDB ID : 9QGF
Title : Crystal structure of an NADH-accepting ene reductase variant NostocER1-L1,5 mutant T354K
Authors : Bischoff, D.; Walla, B.; Janowski, R.; Maslakova, A.; Niessing, D.; Weuster-Botz, D.
Deposited on : 2025-03-13
Resolution : 1.44 Å(reported)

This is a wwPDB X-ray Structure Validation Summary Report for a publicly released PDB entry.

We welcome your comments at validation@mail.wwpdb.org

A user guide is available at

<https://www.wwpdb.org/validation/2017/XrayValidationReportHelp>

with specific help available everywhere you see the ⓘ symbol.

The types of validation reports are described at

<http://www.wwpdb.org/validation/2017/FAQs#types>.

The following versions of software and data (see [references ⓘ](#)) were used in the production of this report:

MolProbity	:	4.02b-467
Mogul	:	1.8.4, CSD as541be (2020)
Xtriage (Phenix)	:	1.13
EDS	:	3.0
buster-report	:	1.1.7 (2018)
Percentile statistics	:	20231227.v01 (using entries in the PDB archive December 27th 2023)
CCP4	:	9.0.003 (Gargrove)
Density-Fitness	:	1.0.11
Ideal geometry (proteins)	:	Engh & Huber (2001)
Ideal geometry (DNA, RNA)	:	Parkinson et al. (1996)
Validation Pipeline (wwPDB-VP)	:	2.41.5

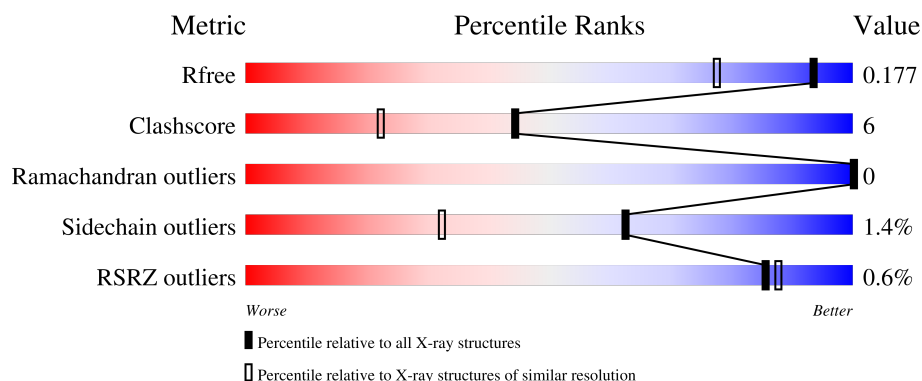
1 Overall quality at a glance

The following experimental techniques were used to determine the structure:

X-RAY DIFFRACTION



The reported resolution of this entry is 1.44 Å.

Percentile scores (ranging between 0-100) for global validation metrics of the entry are shown in the following graphic. The table shows the number of entries on which the scores are based.



Metric	Whole archive (#Entries)	Similar resolution (#Entries, resolution range(Å))
R_{free}	164625	2809 (1.46-1.42)
Clashscore	180529	3008 (1.46-1.42)
Ramachandran outliers	177936	2971 (1.46-1.42)
Sidechain outliers	177891	2971 (1.46-1.42)
RSRZ outliers	164620	2809 (1.46-1.42)

The table below summarises the geometric issues observed across the polymeric chains and their fit to the electron density. The red, orange, yellow and green segments of the lower bar indicate the fraction of residues that contain outliers for ≥ 3 , 2, 1 and 0 types of geometric quality criteria respectively. A grey segment represents the fraction of residues that are not modelled. The numeric value for each fraction is indicated below the corresponding segment, with a dot representing fractions $\leq 5\%$. The upper red bar (where present) indicates the fraction of residues that have poor fit to the electron density. The numeric value is given above the bar.

Mol	Chain	Length	Quality of chain
1	A	375	 86% 8% • 5%
1	B	375	 85% 9% • 5%

The following table lists non-polymeric compounds, carbohydrate monomers and non-standard residues in protein, DNA, RNA chains that are outliers for geometric or electron-density-fit criteria:

Mol	Type	Chain	Res	Chirality	Geometry	Clashes	Electron density
4	A1I6V	B	404	X	-	-	-

2 Entry composition

There are 7 unique types of molecules in this entry. The entry contains 6781 atoms, of which 0 are hydrogens and 0 are deuteriums.

In the tables below, the ZeroOcc column contains the number of atoms modelled with zero occupancy, the AltConf column contains the number of residues with at least one atom in alternate conformation and the Trace column contains the number of residues modelled with at most 2 atoms.

- Molecule 1 is a protein called All1865 protein.

Mol	Chain	Residues	Atoms					ZeroOcc	AltConf	Trace
1	A	356	Total	C	N	O	S	0	17	0
			2895	1827	515	551	2			
1	B	356	Total	C	N	O	S	0	13	0
			2854	1801	505	546	2			

There are 38 discrepancies between the modelled and reference sequences:

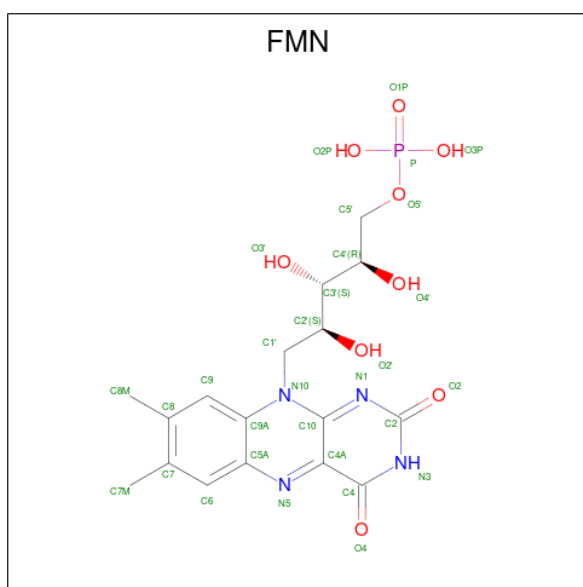
Chain	Residue	Modelled	Actual	Comment	Reference
A	1	MET	-	initiating methionine	UNP Q8YVV8
A	2	GLY	-	expression tag	UNP Q8YVV8
A	3	HIS	-	expression tag	UNP Q8YVV8
A	4	HIS	-	expression tag	UNP Q8YVV8
A	5	HIS	-	expression tag	UNP Q8YVV8
A	6	HIS	-	expression tag	UNP Q8YVV8
A	7	HIS	-	expression tag	UNP Q8YVV8
A	8	HIS	-	expression tag	UNP Q8YVV8
A	9	GLY	-	expression tag	UNP Q8YVV8
A	10	SER	-	expression tag	UNP Q8YVV8
A	11	GLY	-	expression tag	UNP Q8YVV8
A	40	SER	GLN	conflict	UNP Q8YVV8
A	243	LEU	SER	conflict	UNP Q8YVV8
A	244	THR	GLY	conflict	UNP Q8YVV8
A	246	LEU	PHE	conflict	UNP Q8YVV8
A	248	GLY	ASP	conflict	UNP Q8YVV8
A	249	CYS	ILE	conflict	UNP Q8YVV8
A	250	VAL	ARG	conflict	UNP Q8YVV8
A	354	LYS	THR	engineered mutation	UNP Q8YVV8
B	1	MET	-	initiating methionine	UNP Q8YVV8
B	2	GLY	-	expression tag	UNP Q8YVV8
B	3	HIS	-	expression tag	UNP Q8YVV8
B	4	HIS	-	expression tag	UNP Q8YVV8
B	5	HIS	-	expression tag	UNP Q8YVV8
B	6	HIS	-	expression tag	UNP Q8YVV8

Continued on next page...

Continued from previous page...

Chain	Residue	Modelled	Actual	Comment	Reference
B	7	HIS	-	expression tag	UNP Q8YVV8
B	8	HIS	-	expression tag	UNP Q8YVV8
B	9	GLY	-	expression tag	UNP Q8YVV8
B	10	SER	-	expression tag	UNP Q8YVV8
B	11	GLY	-	expression tag	UNP Q8YVV8
B	40	SER	GLN	conflict	UNP Q8YVV8
B	243	LEU	SER	conflict	UNP Q8YVV8
B	244	THR	GLY	conflict	UNP Q8YVV8
B	246	LEU	PHE	conflict	UNP Q8YVV8
B	248	GLY	ASP	conflict	UNP Q8YVV8
B	249	CYS	ILE	conflict	UNP Q8YVV8
B	250	VAL	ARG	conflict	UNP Q8YVV8
B	354	LYS	THR	engineered mutation	UNP Q8YVV8

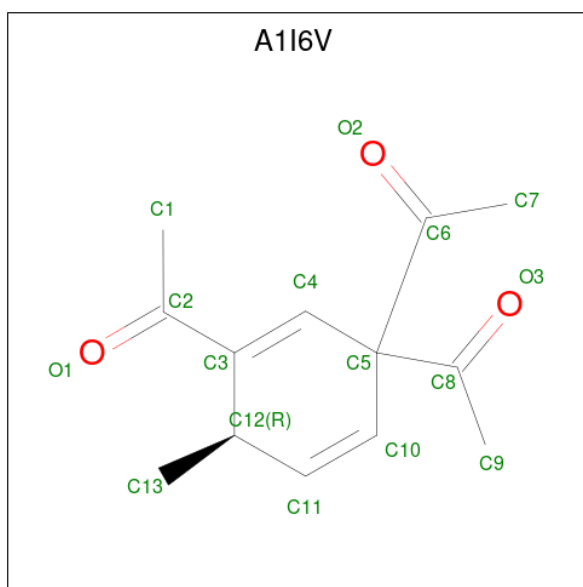
- Molecule 2 is FLAVIN MONONUCLEOTIDE (three-letter code: FMN) (formula: $C_{17}H_{21}N_4O_9P$).





Mol	Chain	Residues	Atoms			ZeroOcc	AltConf
3	A	1	Total	C	O	0	0
			4	2	2		
3	A	1	Total	C	O	0	1
			8	4	4		
3	A	1	Total	C	O	0	1
			8	4	4		
3	B	1	Total	C	O	0	0
			4	2	2		
3	B	1	Total	C	O	0	0
			4	2	2		

- Molecule 4 is 1-[(6 {R})-3,3-diethanoyl-6-methyl-cyclohexa-1,4-dien-1-yl]ethanone (three-letter code: A1I6V) (formula: C₁₃H₁₆O₃).



Mol	Chain	Residues	Atoms			ZeroOcc	AltConf
4	A	1	Total	C	O	0	0
			16	13	3		
4	B	1	Total	C	O	0	0
			16	13	3		

- Molecule 5 is SODIUM ION (three-letter code: NA) (formula: Na).

Mol	Chain	Residues	Atoms		ZeroOcc	AltConf
5	A	1	Total	Na	0	0
			1	1		
5	B	1	Total	Na	0	0
			1	1		

- Molecule 6 is CHLORIDE ION (three-letter code: CL) (formula: Cl).

Mol	Chain	Residues	Atoms		ZeroOcc	AltConf
6	A	1	Total	Cl	0	1
			2	2		
6	B	1	Total	Cl	0	0
			1	1		

- Molecule 7 is water.

Mol	Chain	Residues	Atoms		ZeroOcc	AltConf
7	A	447	Total	O	0	3
			450	450		

Continued on next page...

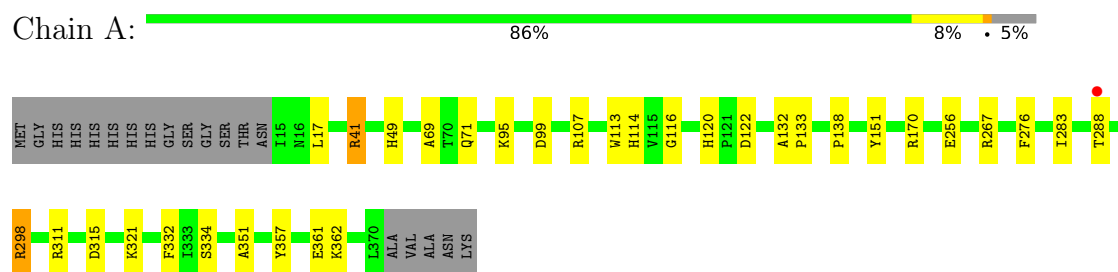
Continued from previous page...

Mol	Chain	Residues	Atoms		ZeroOcc	AltConf
7	B	453	Total 455	O 455	0	2

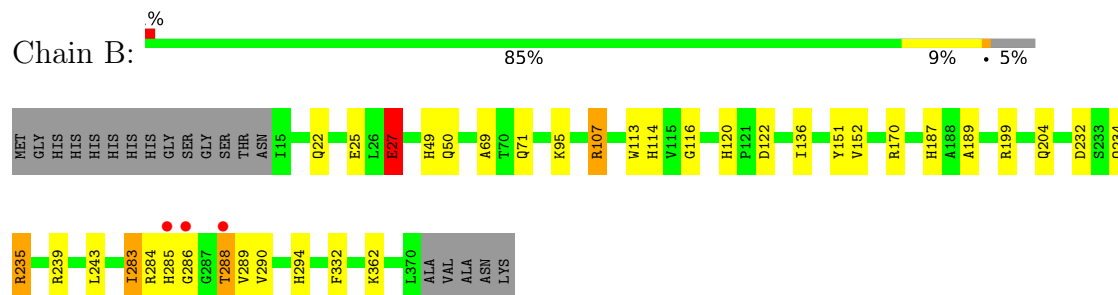
3 Residue-property plots [i](#)

These plots are drawn for all protein, RNA, DNA and oligosaccharide chains in the entry. The first graphic for a chain summarises the proportions of the various outlier classes displayed in the second graphic. The second graphic shows the sequence view annotated by issues in geometry and electron density. Residues are color-coded according to the number of geometric quality criteria for which they contain at least one outlier: green = 0, yellow = 1, orange = 2 and red = 3 or more. A red dot above a residue indicates a poor fit to the electron density ($RSRZ > 2$). Stretches of 2 or more consecutive residues without any outlier are shown as a green connector. Residues present in the sample, but not in the model, are shown in grey.

- Molecule 1: All1865 protein



- Molecule 1: All1865 protein



4 Data and refinement statistics

Property	Value	Source
Space group	P 1 21 1	Depositor
Cell constants a, b, c, α , β , γ	55.50Å 68.08Å 91.71Å 90.00° 93.70° 90.00°	Depositor
Resolution (Å)	48.80 – 1.44 48.80 – 1.44	Depositor EDS
% Data completeness (in resolution range)	98.8 (48.80-1.44) 98.8 (48.80-1.44)	Depositor EDS
R_{merge}	(Not available)	Depositor
R_{sym}	(Not available)	Depositor
$\langle I/\sigma(I) \rangle$ ¹	1.45 (at 1.45Å)	Xtriage
Refinement program	REFMAC 5.8.0430 (refmacat 0.4.100)	Depositor
R, R_{free}	0.142 , 0.187 0.146 , 0.177	Depositor DCC
R_{free} test set	6037 reflections (5.00%)	wwPDB-VP
Wilson B-factor (Å ²)	13.3	Xtriage
Anisotropy	0.051	Xtriage
Bulk solvent k_{sol} (e/Å ³), B_{sol} (Å ²)	0.34 , 46.9	EDS
L-test for twinning ²	$\langle L \rangle = 0.48$, $\langle L^2 \rangle = 0.31$	Xtriage
Estimated twinning fraction	No twinning to report.	Xtriage
F_o, F_c correlation	0.98	EDS
Total number of atoms	6781	wwPDB-VP
Average B, all atoms (Å ²)	17.0	wwPDB-VP

Xtriage's analysis on translational NCS is as follows: *The analyses of the Patterson function reveals a significant off-origin peak that is 42.10 % of the origin peak, indicating pseudo-translational symmetry. The chance of finding a peak of this or larger height randomly in a structure without pseudo-translational symmetry is equal to 2.1439e-04. The detected translational NCS is most likely also responsible for the elevated intensity ratio.*

¹Intensities estimated from amplitudes.

²Theoretical values of $\langle |L| \rangle$, $\langle L^2 \rangle$ for acentric reflections are 0.5, 0.333 respectively for untwinned datasets, and 0.375, 0.2 for perfectly twinned datasets.

5 Model quality [i](#)

5.1 Standard geometry [i](#)

Bond lengths and bond angles in the following residue types are not validated in this section: A1I6V, CL, FMN, EDO, NA

The Z score for a bond length (or angle) is the number of standard deviations the observed value is removed from the expected value. A bond length (or angle) with $|Z| > 5$ is considered an outlier worth inspection. RMSZ is the root-mean-square of all Z scores of the bond lengths (or angles).

Mol	Chain	Bond lengths		Bond angles	
		RMSZ	# Z >5	RMSZ	# Z >5
1	A	0.57	0/2962	0.92	5/4033 (0.1%)
1	B	0.55	0/2921	0.93	5/3981 (0.1%)
All	All	0.56	0/5883	0.92	10/8014 (0.1%)

Chiral center outliers are detected by calculating the chiral volume of a chiral center and verifying if the center is modelled as a planar moiety or with the opposite hand. A planarity outlier is detected by checking planarity of atoms in a peptide group, atoms in a mainchain group or atoms of a sidechain that are expected to be planar.

Mol	Chain	#Chirality outliers	#Planarity outliers
1	A	0	3
1	B	0	4
All	All	0	7

There are no bond length outliers.

The worst 5 of 10 bond angle outliers are listed below:

Mol	Chain	Res	Type	Atoms	Z	Observed(°)	Ideal(°)
1	A	95[A]	LYS	CD-CE-NZ	7.95	129.98	111.70
1	A	95[B]	LYS	CD-CE-NZ	7.95	129.98	111.70
1	A	170	ARG	NE-CZ-NH2	-6.61	116.99	120.30
1	B	239	ARG	NE-CZ-NH2	-5.52	117.54	120.30
1	B	107	ARG	NE-CZ-NH1	-5.36	117.62	120.30

There are no chirality outliers.

5 of 7 planarity outliers are listed below:

Mol	Chain	Res	Type	Group
1	A	107	ARG	Sidechain

Continued on next page...

Continued from previous page...

Mol	Chain	Res	Type	Group
1	A	311	ARG	Sidechain
1	A	41	ARG	Sidechain
1	B	107	ARG	Sidechain
1	B	170	ARG	Sidechain

5.2 Too-close contacts

In the following table, the Non-H and H(model) columns list the number of non-hydrogen atoms and hydrogen atoms in the chain respectively. The H(added) column lists the number of hydrogen atoms added and optimized by MolProbity. The Clashes column lists the number of clashes within the asymmetric unit, whereas Symm-Clashes lists symmetry-related clashes.

Mol	Chain	Non-H	H(model)	H(added)	Clashes	Symm-Clashes
1	A	2895	0	2823	24	0
1	B	2854	0	2775	43	0
2	A	31	0	19	1	0
2	B	31	0	19	0	0
3	A	20	0	30	1	0
3	B	8	0	12	0	0
4	A	16	0	0	2	0
4	B	16	0	0	2	0
5	A	1	0	0	0	0
5	B	1	0	0	0	0
6	A	2	0	0	0	0
6	B	1	0	0	0	0
7	A	450	0	0	11	0
7	B	455	0	0	17	0
All	All	6781	0	5678	69	0

The all-atom clashscore is defined as the number of clashes found per 1000 atoms (including hydrogen atoms). The all-atom clashscore for this structure is 6.

The worst 5 of 69 close contacts within the same asymmetric unit are listed below, sorted by their clash magnitude.

Atom-1	Atom-2	Interatomic distance (Å)	Clash overlap (Å)
1:B:27[A]:GLU:O	1:B:27[A]:GLU:HG2	1.69	0.93
1:B:136:ILE:HD11	1:B:204[B]:GLN:OE1	1.70	0.90
1:A:114:HIS:HD2	1:A:116:GLY:H	1.20	0.89
1:A:120:HIS:HD2	1:A:122:ASP:H	1.19	0.86
1:B:114:HIS:HD2	1:B:116:GLY:H	1.24	0.85

There are no symmetry-related clashes.

5.3 Torsion angles [i](#)

5.3.1 Protein backbone [i](#)

In the following table, the Percentiles column shows the percent Ramachandran outliers of the chain as a percentile score with respect to all X-ray entries followed by that with respect to entries of similar resolution.

The Analysed column shows the number of residues for which the backbone conformation was analysed, and the total number of residues.

Mol	Chain	Analysed	Favoured	Allowed	Outliers	Percentiles	
1	A	371/375 (99%)	360 (97%)	11 (3%)	0	100	100
1	B	367/375 (98%)	358 (98%)	9 (2%)	0	100	100
All	All	738/750 (98%)	718 (97%)	20 (3%)	0	100	100

There are no Ramachandran outliers to report.

5.3.2 Protein sidechains [i](#)

In the following table, the Percentiles column shows the percent sidechain outliers of the chain as a percentile score with respect to all X-ray entries followed by that with respect to entries of similar resolution.

The Analysed column shows the number of residues for which the sidechain conformation was analysed, and the total number of residues.

Mol	Chain	Analysed	Rotameric	Outliers	Percentiles	
1	A	303/300 (101%)	299 (99%)	4 (1%)	65	35
1	B	299/300 (100%)	294 (98%)	5 (2%)	56	23
All	All	602/600 (100%)	593 (98%)	9 (2%)	62	30

5 of 9 residues with a non-rotameric sidechain are listed below:

Mol	Chain	Res	Type
1	B	283	ILE
1	B	332	PHE
1	A	332	PHE
1	B	27[A]	GLU
1	B	27[B]	GLU

Sometimes sidechains can be flipped to improve hydrogen bonding and reduce clashes. 5 of 20 such sidechains are listed below:

Mol	Chain	Res	Type
1	B	120	HIS
1	B	247	ASN
1	B	349	ASN
1	B	294	HIS
1	A	285	HIS

5.3.3 RNA ⓘ

There are no RNA molecules in this entry.

5.4 Non-standard residues in protein, DNA, RNA chains ⓘ

There are no non-standard protein/DNA/RNA residues in this entry.

5.5 Carbohydrates ⓘ

There are no oligosaccharides in this entry.

5.6 Ligand geometry ⓘ

Of 16 ligands modelled in this entry, 5 are monoatomic - leaving 11 for Mogul analysis.

In the following table, the Counts columns list the number of bonds (or angles) for which Mogul statistics could be retrieved, the number of bonds (or angles) that are observed in the model and the number of bonds (or angles) that are defined in the Chemical Component Dictionary. The Link column lists molecule types, if any, to which the group is linked. The Z score for a bond length (or angle) is the number of standard deviations the observed value is removed from the expected value. A bond length (or angle) with $|Z| > 2$ is considered an outlier worth inspection. RMSZ is the root-mean-square of all Z scores of the bond lengths (or angles).

Mol	Type	Chain	Res	Link	Bond lengths			Bond angles		
					Counts	RMSZ	$\# Z > 2$	Counts	RMSZ	$\# Z > 2$
2	FMN	A	401	-	33,33,33	0.84	2 (6%)	48,50,50	0.84	1 (2%)
3	EDO	A	403[A]	-	3,3,3	0.22	0	2,2,2	0.65	0
3	EDO	B	403	-	3,3,3	0.37	0	2,2,2	0.37	0
3	EDO	B	402	-	3,3,3	0.16	0	2,2,2	0.16	0
4	A1I6V	B	404	-	13,16,16	8.92	5 (38%)	12,24,24	2.18	4 (33%)
3	EDO	A	402	-	3,3,3	0.42	0	2,2,2	0.37	0
3	EDO	A	404[A]	-	3,3,3	0.28	0	2,2,2	0.42	0

Mol	Type	Chain	Res	Link	Bond lengths			Bond angles		
					Counts	RMSZ	# Z > 2	Counts	RMSZ	# Z > 2
3	EDO	A	404[B]	-	3,3,3	0.12	0	2,2,2	0.25	0
2	FMN	B	401	-	33,33,33	1.06	1 (3%)	48,50,50	0.85	1 (2%)
3	EDO	A	403[B]	-	3,3,3	0.25	0	2,2,2	0.39	0
4	A1I6V	A	405	-	13,16,16	8.61	6 (46%)	12,24,24	3.41	6 (50%)

In the following table, the Chirals column lists the number of chiral outliers, the number of chiral centers analysed, the number of these observed in the model and the number defined in the Chemical Component Dictionary. Similar counts are reported in the Torsion and Rings columns. '-' means no outliers of that kind were identified.

Mol	Type	Chain	Res	Link	Chirals	Torsions	Rings
2	FMN	A	401	-	-	1/18/18/18	0/3/3/3
3	EDO	A	403[A]	-	-	1/1/1/1	-
3	EDO	B	403	-	-	0/1/1/1	-
3	EDO	B	402	-	-	1/1/1/1	-
4	A1I6V	B	404	-	1/1/6/9	5/16/31/31	0/1/1/1
3	EDO	A	402	-	-	0/1/1/1	-
3	EDO	A	404[A]	-	-	1/1/1/1	-
3	EDO	A	404[B]	-	-	1/1/1/1	-
2	FMN	B	401	-	-	1/18/18/18	0/3/3/3
3	EDO	A	403[B]	-	-	1/1/1/1	-
4	A1I6V	A	405	-	-	6/16/31/31	0/1/1/1

The worst 5 of 14 bond length outliers are listed below:

Mol	Chain	Res	Type	Atoms	Z	Observed(Å)	Ideal(Å)
4	B	404	A1I6V	C4-C3	28.65	1.56	1.33
4	A	405	A1I6V	C4-C3	27.36	1.55	1.33
4	B	404	A1I6V	C11-C10	13.79	1.52	1.32
4	A	405	A1I6V	C11-C10	13.19	1.52	1.32
2	B	401	FMN	C1'-C2'	4.72	1.59	1.52

The worst 5 of 12 bond angle outliers are listed below:

Mol	Chain	Res	Type	Atoms	Z	Observed(°)	Ideal(°)
4	A	405	A1I6V	C1-C2-C3	7.15	129.18	119.66
4	A	405	A1I6V	O1-C2-C3	-5.74	115.78	120.01
4	B	404	A1I6V	O1-C2-C3	-4.77	116.49	120.01
4	A	405	A1I6V	O3-C8-C5	4.39	128.30	119.72
4	A	405	A1I6V	C9-C8-C5	-3.58	113.02	119.07

All (1) chirality outliers are listed below:

Mol	Chain	Res	Type	Atom
4	B	404	A1I6V	C12

5 of 18 torsion outliers are listed below:

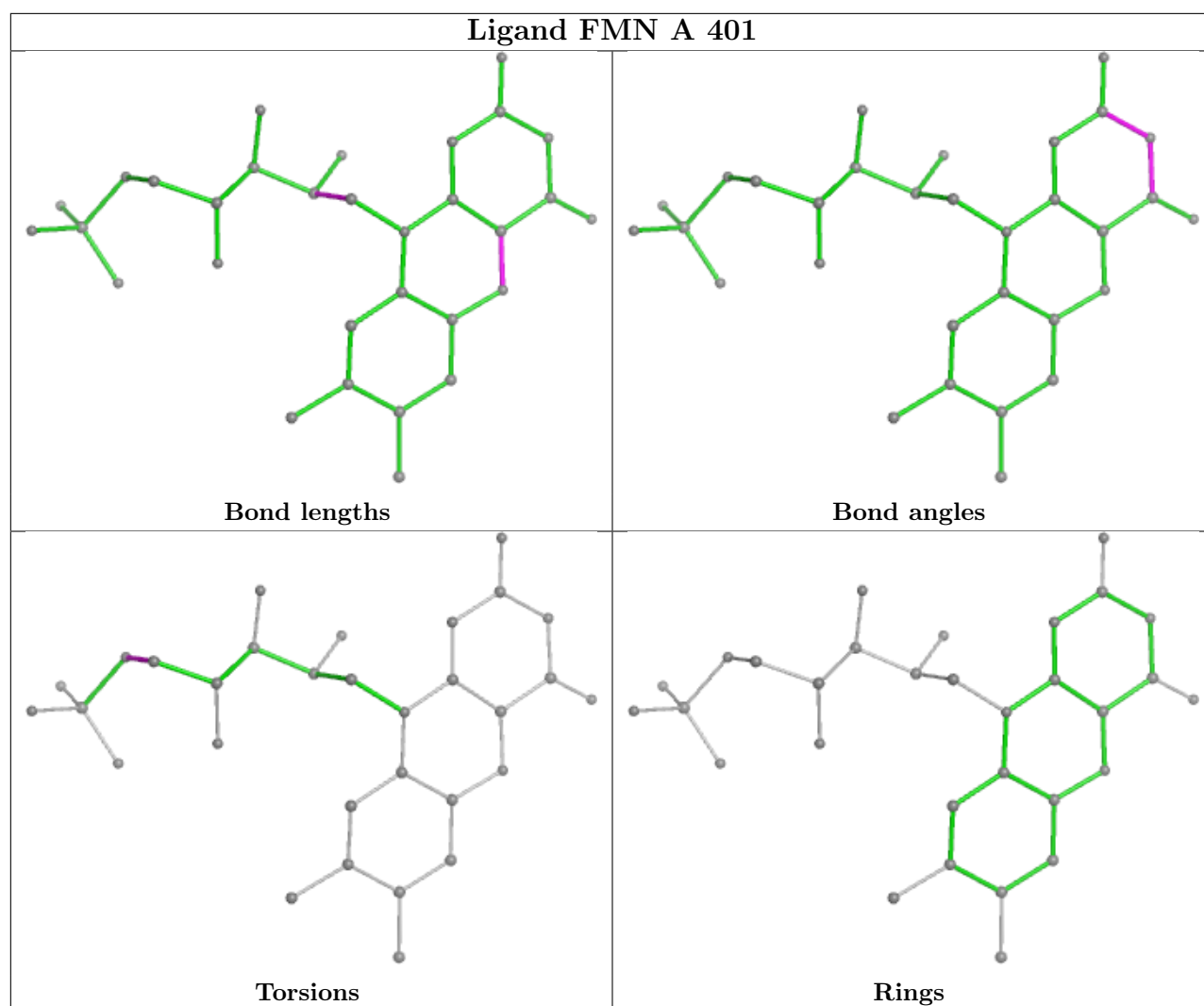
Mol	Chain	Res	Type	Atoms
4	A	405	A1I6V	C10-C5-C6-C7
4	A	405	A1I6V	C10-C5-C6-O2
4	B	404	A1I6V	C4-C5-C8-C9
4	B	404	A1I6V	C10-C5-C8-C9
3	A	404[B]	EDO	O1-C1-C2-O2

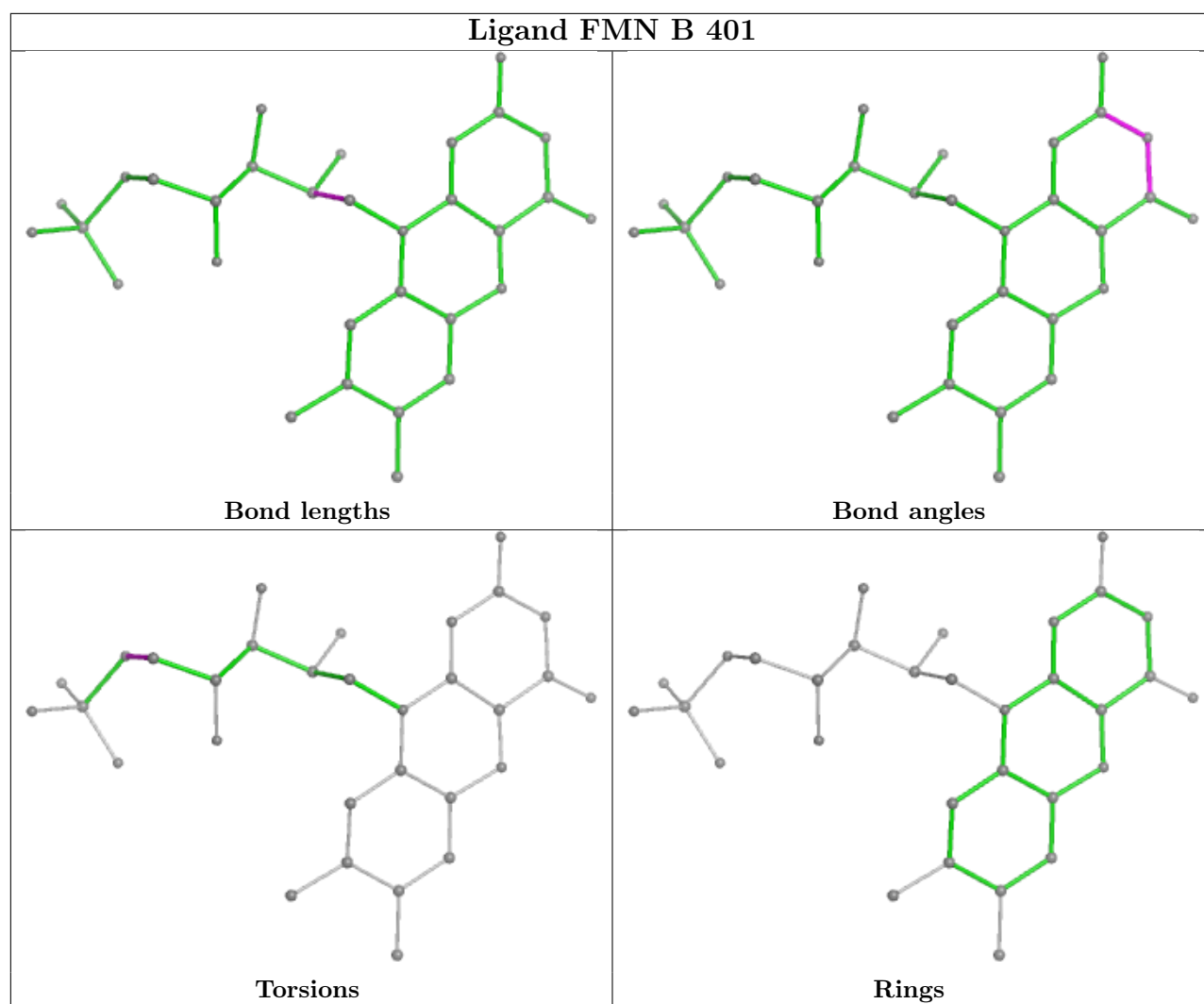
There are no ring outliers.

4 monomers are involved in 6 short contacts:

Mol	Chain	Res	Type	Clashes	Symm-Clashes
2	A	401	FMN	1	0
4	B	404	A1I6V	2	0
3	A	404[A]	EDO	1	0
4	A	405	A1I6V	2	0

The following is a two-dimensional graphical depiction of Mogul quality analysis of bond lengths, bond angles, torsion angles, and ring geometry for all instances of the Ligand of Interest. In addition, ligands with molecular weight > 250 and outliers as shown on the validation Tables will also be included. For torsion angles, if less than 5% of the Mogul distribution of torsion angles is within 10 degrees of the torsion angle in question, then that torsion angle is considered an outlier. Any bond that is central to one or more torsion angles identified as an outlier by Mogul will be highlighted in the graph. For rings, the root-mean-square deviation (RMSD) between the ring in question and similar rings identified by Mogul is calculated over all ring torsion angles. If the average RMSD is greater than 60 degrees and the minimal RMSD between the ring in question and any Mogul-identified rings is also greater than 60 degrees, then that ring is considered an outlier. The outliers are highlighted in purple. The color gray indicates Mogul did not find sufficient equivalents in the CSD to analyse the geometry.





5.7 Other polymers [i](#)

There are no such residues in this entry.

5.8 Polymer linkage issues [i](#)

There are no chain breaks in this entry.

6 Fit of model and data [i](#)

6.1 Protein, DNA and RNA chains [i](#)

In the following table, the column labelled ‘#RSRZ > 2’ contains the number (and percentage) of RSRZ outliers, followed by percent RSRZ outliers for the chain as percentile scores relative to all X-ray entries and entries of similar resolution. The OWAB column contains the minimum, median, 95th percentile and maximum values of the occupancy-weighted average B-factor per residue. The column labelled ‘Q < 0.9’ lists the number of (and percentage) of residues with an average occupancy less than 0.9.

Mol	Chain	Analysed	<RSRZ>	#RSRZ>2	OWAB(Å ²)	Q<0.9
1	A	356/375 (94%)	-0.72	1 (0%) 90 92	5, 13, 23, 45	18 (5%)
1	B	356/375 (94%)	-0.67	3 (0%) 82 85	5, 13, 25, 66	13 (3%)
All	All	712/750 (94%)	-0.70	4 (0%) 85 88	5, 13, 24, 66	31 (4%)

All (4) RSRZ outliers are listed below:

Mol	Chain	Res	Type	RSRZ
1	B	286	GLY	4.4
1	B	285	HIS	3.4
1	B	288	THR	2.6
1	A	288	THR	2.0

6.2 Non-standard residues in protein, DNA, RNA chains [i](#)

There are no non-standard protein/DNA/RNA residues in this entry.

6.3 Carbohydrates [i](#)

There are no monosaccharides in this entry.

6.4 Ligands [i](#)

In the following table, the Atoms column lists the number of modelled atoms in the group and the number defined in the chemical component dictionary. The B-factors column lists the minimum, median, 95th percentile and maximum values of B factors of atoms in the group. The column labelled ‘Q < 0.9’ lists the number of atoms with occupancy less than 0.9.

Mol	Type	Chain	Res	Atoms	RSCC	RSR	B-factors(Å ²)	Q<0.9
6	CL	B	406	1/1	0.83	0.14	72,72,72,72	0

Continued on next page...

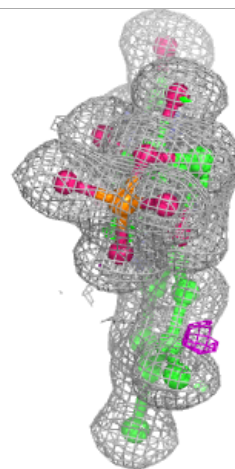
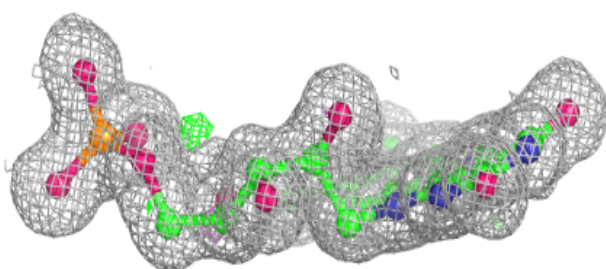
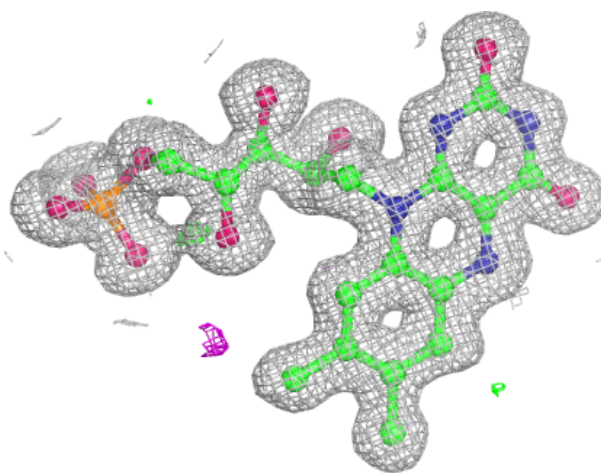
Continued from previous page...

Mol	Type	Chain	Res	Atoms	RSCC	RSR	B-factors(\AA^2)	Q<0.9
3	EDO	A	404[B]	4/4	0.86	0.12	26,26,27,32	4
3	EDO	A	404[A]	4/4	0.86	0.12	15,17,19,21	4
5	NA	A	406	1/1	0.91	0.22	61,61,61,61	0
4	A1I6V	A	405	16/16	0.91	0.11	11,25,36,38	0
4	A1I6V	B	404	16/16	0.94	0.10	11,21,29,30	1
3	EDO	A	403[B]	4/4	0.95	0.06	18,19,19,20	4
3	EDO	A	402	4/4	0.95	0.09	17,22,23,28	0
3	EDO	A	403[A]	4/4	0.95	0.06	18,18,18,19	4
3	EDO	B	402	4/4	0.95	0.08	22,22,23,24	0
6	CL	A	407[B]	1/1	0.96	0.11	29,29,29,29	1
6	CL	A	407[A]	1/1	0.96	0.11	34,34,34,34	1
5	NA	B	405	1/1	0.98	0.07	49,49,49,49	0
3	EDO	B	403	4/4	0.98	0.07	17,18,19,19	0
2	FMN	A	401	31/31	0.99	0.03	8,10,13,13	0
2	FMN	B	401	31/31	0.99	0.03	9,10,12,13	0

The following is a graphical depiction of the model fit to experimental electron density of all instances of the Ligand of Interest. In addition, ligands with molecular weight > 250 and outliers as shown on the geometry validation Tables will also be included. Each fit is shown from different orientation to approximate a three-dimensional view.

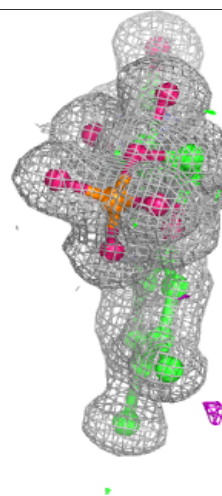
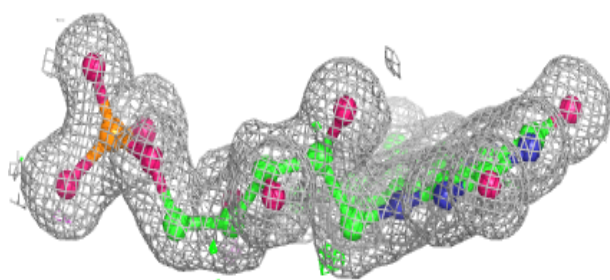
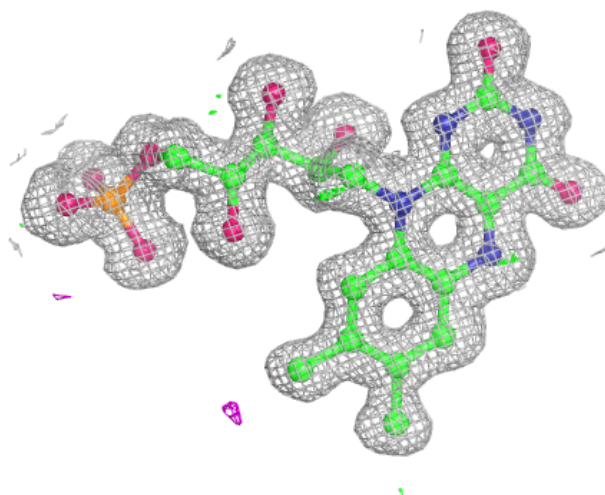
Electron density around FMN A 401:

$2mF_o-DF_c$ (at 0.7 rmsd) in gray
 mF_o-DF_c (at 3 rmsd) in purple (negative)
and green (positive)



Electron density around FMN B 401:

$2mF_o-DF_c$ (at 0.7 rmsd) in gray
 mF_o-DF_c (at 3 rmsd) in purple (negative)
and green (positive)



6.5 Other polymers [i](#)

There are no such residues in this entry.