



Full wwPDB X-ray Structure Validation Report ⓘ

Nov 12, 2024 – 04:41 AM EST

PDB ID : 2QG6
Title : Crystal structure of human nicotinamide riboside kinase (NRK1) in complex with nicotinamide mononucleotide (NMN)
Authors : Khan, J.A.; Xiang, S.; Tong, L.
Deposited on : 2007-06-28
Resolution : 1.50 Å(reported)

This is a Full wwPDB X-ray Structure Validation Report for a publicly released PDB entry.

We welcome your comments at validation@mail.wwpdb.org

A user guide is available at

<https://www.wwpdb.org/validation/2017/XrayValidationReportHelp>

with specific help available everywhere you see the ⓘ symbol.

The types of validation reports are described at

<http://www.wwpdb.org/validation/2017/FAQs#types>.

The following versions of software and data (see [references ⓘ](#)) were used in the production of this report:

MolProbity	:	4.02b-467
Mogul	:	2022.3.0, CSD as543be (2022)
Xtriage (Phenix)	:	1.20.1
EDS	:	FAILED
buster-report	:	1.1.7 (2018)
Percentile statistics	:	20231227.v01 (using entries in the PDB archive December 27th 2023)
Ideal geometry (proteins)	:	Engh & Huber (2001)
Ideal geometry (DNA, RNA)	:	Parkinson et al. (1996)
Validation Pipeline (wwPDB-VP)	:	2.39

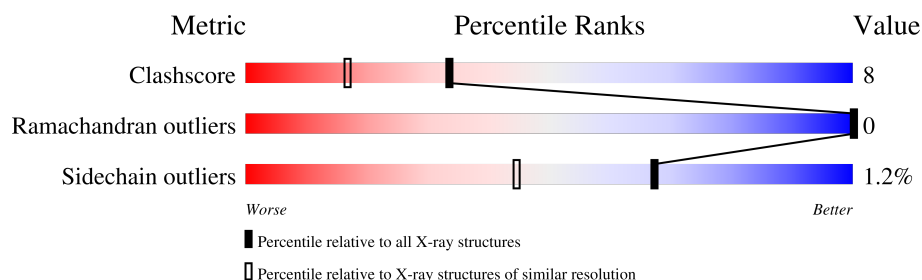
1 Overall quality at a glance

The following experimental techniques were used to determine the structure:

X-RAY DIFFRACTION

The reported resolution of this entry is 1.50 Å.

Percentile scores (ranging between 0-100) for global validation metrics of the entry are shown in the following graphic. The table shows the number of entries on which the scores are based.



Metric	Whole archive (#Entries)	Similar resolution (#Entries, resolution range(Å))
Clashscore	180529	4048 (1.50-1.50)
Ramachandran outliers	177936	3970 (1.50-1.50)
Sidechain outliers	177891	3967 (1.50-1.50)

The table below summarises the geometric issues observed across the polymeric chains and their fit to the electron density. The red, orange, yellow and green segments of the lower bar indicate the fraction of residues that contain outliers for ≥ 3 , 2, 1 and 0 types of geometric quality criteria respectively. A grey segment represents the fraction of residues that are not modelled. The numeric value for each fraction is indicated below the corresponding segment, with a dot representing fractions $\leq 5\%$

Note EDS failed to run properly.

Mol	Chain	Length	Quality of chain
1	A	199	

2 Entry composition [i](#)

There are 4 unique types of molecules in this entry. The entry contains 1852 atoms, of which 0 are hydrogens and 0 are deuteriums.

In the tables below, the ZeroOcc column contains the number of atoms modelled with zero occupancy, the AltConf column contains the number of residues with at least one atom in alternate conformation and the Trace column contains the number of residues modelled with at most 2 atoms.

- Molecule 1 is a protein called Nicotinamide riboside kinase 1.

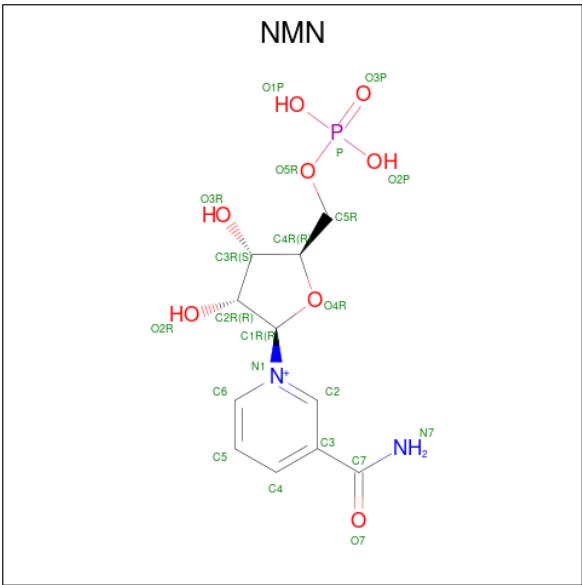
Mol	Chain	Residues	Atoms						ZeroOcc	AltConf	Trace
			Total	C	N	O	S	Se			
1	A	182	1502	969	241	283	3	6	0	0	0

- Molecule 2 is PHOSPHATE ION (three-letter code: PO4) (formula: O₄P).



Mol	Chain	Residues	Atoms			ZeroOcc	AltConf
			Total	O	P		
2	A	1	5	4	1	0	0

- Molecule 3 is BETA-NICOTINAMIDE RIBOSE MONOPHOSPHATE (three-letter code: NMN) (formula: C₁₁H₁₆N₂O₈P).



Mol	Chain	Residues	Atoms					ZeroOcc	AltConf
3	A	1	Total	C	N	O	P	0	0
			22	11	2	8	1		

- Molecule 4 is water.

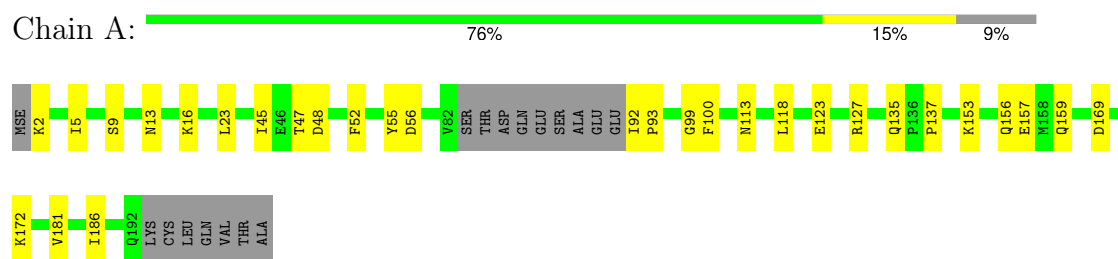
Mol	Chain	Residues	Atoms		ZeroOcc	AltConf
4	A	323	Total	O	0	0
			323	323		

3 Residue-property plots [i](#)

These plots are drawn for all protein, RNA, DNA and oligosaccharide chains in the entry. The first graphic for a chain summarises the proportions of the various outlier classes displayed in the second graphic. The second graphic shows the sequence view annotated by issues in geometry. Residues are color-coded according to the number of geometric quality criteria for which they contain at least one outlier: green = 0, yellow = 1, orange = 2 and red = 3 or more. Stretches of 2 or more consecutive residues without any outlier are shown as a green connector. Residues present in the sample, but not in the model, are shown in grey.

Note EDS failed to run properly.

- Molecule 1: Nicotinamide riboside kinase 1



4 Data and refinement statistics

EDS failed to run properly - this section is therefore incomplete.

Property	Value	Source
Space group	C 2 2 21	Depositor
Cell constants a, b, c, α , β , γ	54.73Å 141.53Å 62.09Å 90.00° 90.00° 90.00°	Depositor
Resolution (Å)	30.00 – 1.50	Depositor
% Data completeness (in resolution range)	95.9 (30.00-1.50)	Depositor
R_{merge}	(Not available)	Depositor
R_{sym}	0.09	Depositor
$\langle I/\sigma(I) \rangle$ ¹	2.74 (at 1.50Å)	Xtriage
Refinement program	CNS	Depositor
R, R_{free}	0.191 , 0.206	Depositor
Wilson B-factor (Å ²)	11.3	Xtriage
Anisotropy	0.343	Xtriage
L-test for twinning ²	$\langle L \rangle = 0.49$, $\langle L^2 \rangle = 0.32$	Xtriage
Estimated twinning fraction	No twinning to report.	Xtriage
Total number of atoms	1852	wwPDB-VP
Average B, all atoms (Å ²)	19.0	wwPDB-VP

Xtriage's analysis on translational NCS is as follows: *The largest off-origin peak in the Patterson function is 11.62% of the height of the origin peak. No significant pseudotranslation is detected.*

¹Intensities estimated from amplitudes.

²Theoretical values of $\langle |L| \rangle$, $\langle L^2 \rangle$ for acentric reflections are 0.5, 0.333 respectively for untwinned datasets, and 0.375, 0.2 for perfectly twinned datasets.

5 Model quality [i](#)

5.1 Standard geometry [i](#)

Bond lengths and bond angles in the following residue types are not validated in this section: NMN, PO4

The Z score for a bond length (or angle) is the number of standard deviations the observed value is removed from the expected value. A bond length (or angle) with $|Z| > 5$ is considered an outlier worth inspection. RMSZ is the root-mean-square of all Z scores of the bond lengths (or angles).

Mol	Chain	Bond lengths		Bond angles	
		RMSZ	$\# Z > 5$	RMSZ	$\# Z > 5$
1	A	0.30	0/1533	0.54	0/2065

There are no bond length outliers.

There are no bond angle outliers.

There are no chirality outliers.

There are no planarity outliers.

5.2 Too-close contacts [i](#)

In the following table, the Non-H and H(model) columns list the number of non-hydrogen atoms and hydrogen atoms in the chain respectively. The H(added) column lists the number of hydrogen atoms added and optimized by MolProbity. The Clashes column lists the number of clashes within the asymmetric unit, whereas Symm-Clashes lists symmetry-related clashes.

Mol	Chain	Non-H	H(model)	H(added)	Clashes	Symm-Clashes
1	A	1502	0	1472	23	0
2	A	5	0	0	0	0
3	A	22	0	14	0	0
4	A	323	0	0	8	0
All	All	1852	0	1486	23	0

The all-atom clashscore is defined as the number of clashes found per 1000 atoms (including hydrogen atoms). The all-atom clashscore for this structure is 8.

All (23) close contacts within the same asymmetric unit are listed below, sorted by their clash magnitude.

Atom-1	Atom-2	Interatomic distance (Å)	Clash overlap (Å)
1:A:5:ILE:H	1:A:113:ASN:HD22	1.18	0.91
1:A:181:VAL:HG12	4:A:522:HOH:O	1.96	0.64
1:A:2:LYS:O	1:A:92:ILE:HG13	2.04	0.57
1:A:48:ASP:OD2	1:A:52:PHE:HB2	2.06	0.55
1:A:5:ILE:H	1:A:113:ASN:ND2	1.97	0.52
1:A:123:GLU:H	1:A:123:GLU:CD	2.14	0.50
1:A:186:ILE:HD11	4:A:657:HOH:O	2.10	0.49
1:A:45:ILE:HG13	1:A:55:TYR:CZ	2.48	0.48
1:A:16:LYS:HG2	1:A:118:LEU:HD12	1.97	0.47
1:A:13:ASN:HB3	4:A:466:HOH:O	2.13	0.47
1:A:47:THR:HG23	4:A:685:HOH:O	2.16	0.46
1:A:127:ARG:HH11	1:A:127:ARG:HG2	1.81	0.45
1:A:2:LYS:HD3	4:A:673:HOH:O	2.16	0.45
1:A:137:PRO:HG3	4:A:561:HOH:O	2.18	0.42
1:A:169:ASP:HB3	1:A:172:LYS:HE3	2.01	0.42
1:A:123:GLU:HB2	4:A:480:HOH:O	2.19	0.42
1:A:135:GLN:HE21	1:A:135:GLN:HA	1.84	0.42
1:A:2:LYS:O	1:A:93:PRO:HD2	2.20	0.42
1:A:23:LEU:HD22	4:A:522:HOH:O	2.20	0.42
1:A:127:ARG:HG2	1:A:127:ARG:NH1	2.35	0.41
1:A:156:GLN:HA	1:A:159:GLN:HE21	1.86	0.41
1:A:9:SER:HA	1:A:99:GLY:O	2.22	0.40
1:A:153:LYS:O	1:A:157:GLU:HG3	2.21	0.40

There are no symmetry-related clashes.

5.3 Torsion angles

5.3.1 Protein backbone

In the following table, the Percentiles column shows the percent Ramachandran outliers of the chain as a percentile score with respect to all X-ray entries followed by that with respect to entries of similar resolution.

The Analysed column shows the number of residues for which the backbone conformation was analysed, and the total number of residues.

Mol	Chain	Analysed	Favoured	Allowed	Outliers	Percentiles	
1	A	178/199 (89%)	173 (97%)	5 (3%)	0	100	100

There are no Ramachandran outliers to report.

5.3.2 Protein sidechains ⓘ

In the following table, the Percentiles column shows the percent sidechain outliers of the chain as a percentile score with respect to all X-ray entries followed by that with respect to entries of similar resolution.

The Analysed column shows the number of residues for which the sidechain conformation was analysed, and the total number of residues.

Mol	Chain	Analysed	Rotameric	Outliers	Percentiles
1	A	169/177 (96%)	167 (99%)	2 (1%)	67 44

All (2) residues with a non-rotameric sidechain are listed below:

Mol	Chain	Res	Type
1	A	56	ASP
1	A	100	PHE

Sometimes sidechains can be flipped to improve hydrogen bonding and reduce clashes. All (7) such sidechains are listed below:

Mol	Chain	Res	Type
1	A	13	ASN
1	A	24	GLN
1	A	113	ASN
1	A	135	GLN
1	A	156	GLN
1	A	159	GLN
1	A	180	GLN

5.3.3 RNA ⓘ

There are no RNA molecules in this entry.

5.4 Non-standard residues in protein, DNA, RNA chains ⓘ

There are no non-standard protein/DNA/RNA residues in this entry.

5.5 Carbohydrates ⓘ

There are no oligosaccharides in this entry.

5.6 Ligand geometry

2 ligands are modelled in this entry.

In the following table, the Counts columns list the number of bonds (or angles) for which Mogul statistics could be retrieved, the number of bonds (or angles) that are observed in the model and the number of bonds (or angles) that are defined in the Chemical Component Dictionary. The Link column lists molecule types, if any, to which the group is linked. The Z score for a bond length (or angle) is the number of standard deviations the observed value is removed from the expected value. A bond length (or angle) with $|Z| > 2$ is considered an outlier worth inspection. RMSZ is the root-mean-square of all Z scores of the bond lengths (or angles).

Mol	Type	Chain	Res	Link	Bond lengths			Bond angles		
					Counts	RMSZ	# Z > 2	Counts	RMSZ	# Z > 2
2	PO4	A	401	-	4,4,4	1.75	0	6,6,6	0.43	0
3	NMN	A	301	-	21,23,23	3.47	9 (42%)	27,34,34	3.24	12 (44%)

In the following table, the Chirals column lists the number of chiral outliers, the number of chiral centers analysed, the number of these observed in the model and the number defined in the Chemical Component Dictionary. Similar counts are reported in the Torsion and Rings columns. '-' means no outliers of that kind were identified.

Mol	Type	Chain	Res	Link	Chirals	Torsions	Rings
3	NMN	A	301	-	-	1/14/30/30	0/2/2/2

All (9) bond length outliers are listed below:

Mol	Chain	Res	Type	Atoms	Z	Observed(Å)	Ideal(Å)
3	A	301	NMN	C4-C3	8.10	1.51	1.39
3	A	301	NMN	C2-N1	7.56	1.43	1.35
3	A	301	NMN	C6-N1	5.70	1.48	1.35
3	A	301	NMN	C3-C7	4.73	1.57	1.50
3	A	301	NMN	C5-C4	4.54	1.46	1.38
3	A	301	NMN	O4R-C4R	3.80	1.53	1.45
3	A	301	NMN	P-O3P	3.74	1.62	1.50
3	A	301	NMN	C6-C5	3.02	1.44	1.38
3	A	301	NMN	C5R-C4R	-2.17	1.45	1.51

All (12) bond angle outliers are listed below:

Mol	Chain	Res	Type	Atoms	Z	Observed(°)	Ideal(°)
3	A	301	NMN	O7-C7-C3	7.46	128.72	119.60
3	A	301	NMN	C3-C7-N7	-6.96	109.16	117.74
3	A	301	NMN	C4R-O4R-C1R	-5.91	104.51	109.92
3	A	301	NMN	C5-C4-C3	-5.84	114.63	120.36

Continued on next page...

Continued from previous page...

Mol	Chain	Res	Type	Atoms	Z	Observed(°)	Ideal(°)
3	A	301	NMN	C5-C6-N1	-4.62	114.09	120.38
3	A	301	NMN	C6-C5-C4	4.44	125.84	119.45
3	A	301	NMN	C4-C3-C7	-4.21	109.59	121.06
3	A	301	NMN	C2-C3-C4	3.29	122.08	118.26
3	A	301	NMN	C2-N1-C1R	-3.13	112.22	119.13
3	A	301	NMN	C2-C3-C7	3.07	128.33	119.46
3	A	301	NMN	C6-N1-C2	2.63	124.12	121.88
3	A	301	NMN	C6-N1-C1R	2.01	123.67	119.73

There are no chirality outliers.

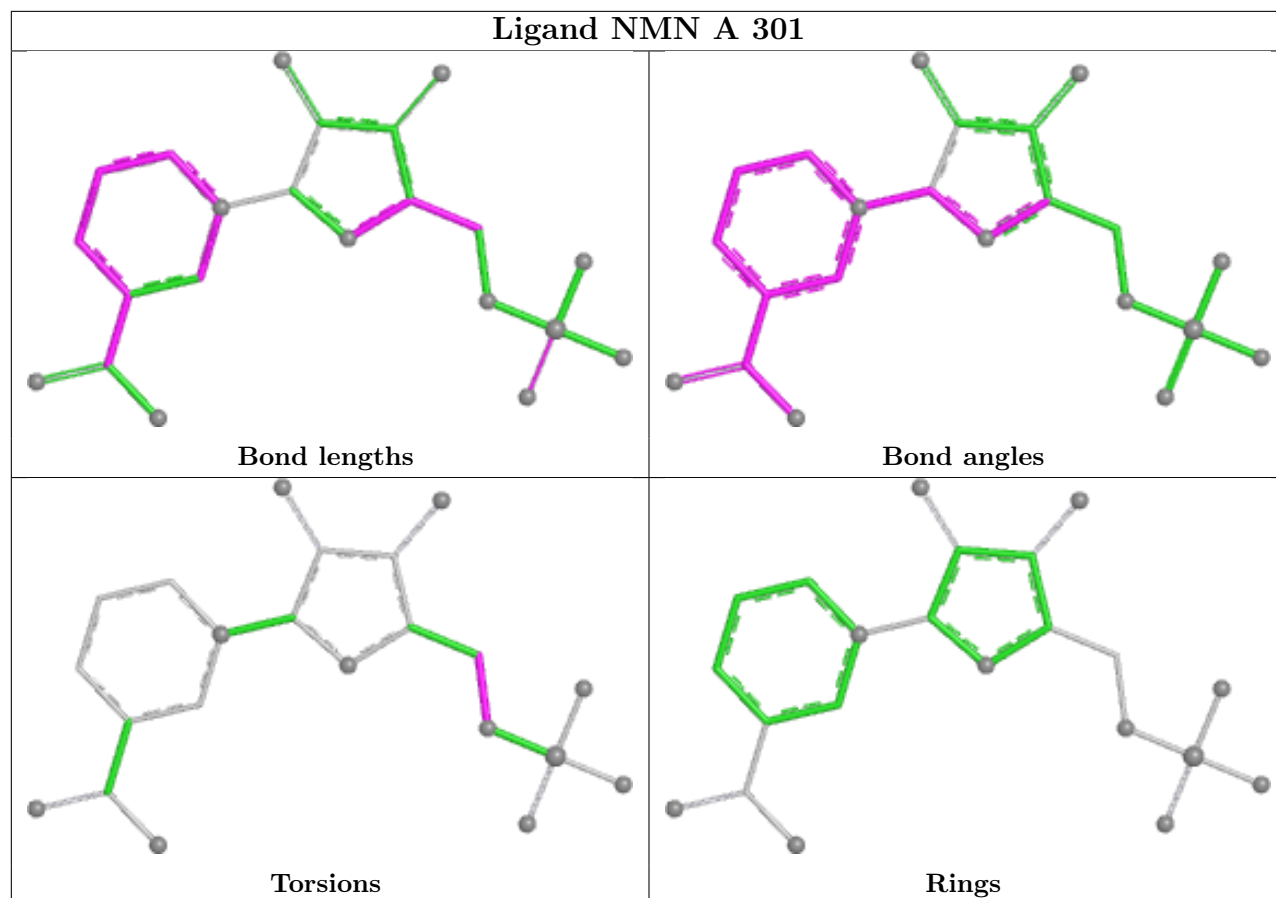
All (1) torsion outliers are listed below:

Mol	Chain	Res	Type	Atoms
3	A	301	NMN	C4R-C5R-O5R-P

There are no ring outliers.

No monomer is involved in short contacts.

The following is a two-dimensional graphical depiction of Mogul quality analysis of bond lengths, bond angles, torsion angles, and ring geometry for all instances of the Ligand of Interest. In addition, ligands with molecular weight > 250 and outliers as shown on the validation Tables will also be included. For torsion angles, if less than 5% of the Mogul distribution of torsion angles is within 10 degrees of the torsion angle in question, then that torsion angle is considered an outlier. Any bond that is central to one or more torsion angles identified as an outlier by Mogul will be highlighted in the graph. For rings, the root-mean-square deviation (RMSD) between the ring in question and similar rings identified by Mogul is calculated over all ring torsion angles. If the average RMSD is greater than 60 degrees and the minimal RMSD between the ring in question and any Mogul-identified rings is also greater than 60 degrees, then that ring is considered an outlier. The outliers are highlighted in purple. The color gray indicates Mogul did not find sufficient equivalents in the CSD to analyse the geometry.



5.7 Other polymers [i](#)

There are no such residues in this entry.

5.8 Polymer linkage issues [i](#)

There are no chain breaks in this entry.

6 Fit of model and data [i](#)

6.1 Protein, DNA and RNA chains [i](#)

EDS failed to run properly - this section is therefore empty.

6.2 Non-standard residues in protein, DNA, RNA chains [i](#)

EDS failed to run properly - this section is therefore empty.

6.3 Carbohydrates [i](#)

EDS failed to run properly - this section is therefore empty.

6.4 Ligands [i](#)

EDS failed to run properly - this section is therefore empty.

6.5 Other polymers [i](#)

EDS failed to run properly - this section is therefore empty.