



Full wwPDB X-ray Structure Validation Report ⓘ

Jun 16, 2024 – 07:38 PM EDT

PDB ID : 5PZN
Title : CRYSTAL STRUCTURE OF THE HEPATITIS C VIRUS NS5B RNA-DEPENDENT RNA POLYMERASE IN COMPLEX WITH 5-[3-(TERT-BUTYLCARBAMOYL)PHENYL]-2-(4-FLUOROPHENYL)-N-METHYL-1-BENZOFURAN-3-CARBOXAMIDE
Authors : Sheriff, S.
Deposited on : 2017-02-27
Resolution : 2.25 Å(reported)

This is a Full wwPDB X-ray Structure Validation Report for a publicly released PDB entry.

We welcome your comments at validation@mail.wwpdb.org

A user guide is available at

<https://www.wwpdb.org/validation/2017/XrayValidationReportHelp>

with specific help available everywhere you see the ⓘ symbol.

The types of validation reports are described at

<http://www.wwpdb.org/validation/2017/FAQs#types>.

The following versions of software and data (see [references](#) ①) were used in the production of this report:

MolProbity	:	4.02b-467
Mogul	:	1.8.5 (274361), CSD as541be (2020)
Xtriage (Phenix)	:	1.13
EDS	:	2.37.1
buster-report	:	1.1.7 (2018)
Percentile statistics	:	20191225.v01 (using entries in the PDB archive December 25th 2019)
Refmac	:	5.8.0158
CCP4	:	7.0.044 (Gargrove)
Ideal geometry (proteins)	:	Engh & Huber (2001)
Ideal geometry (DNA, RNA)	:	Parkinson et al. (1996)
Validation Pipeline (wwPDB-VP)	:	2.37.1

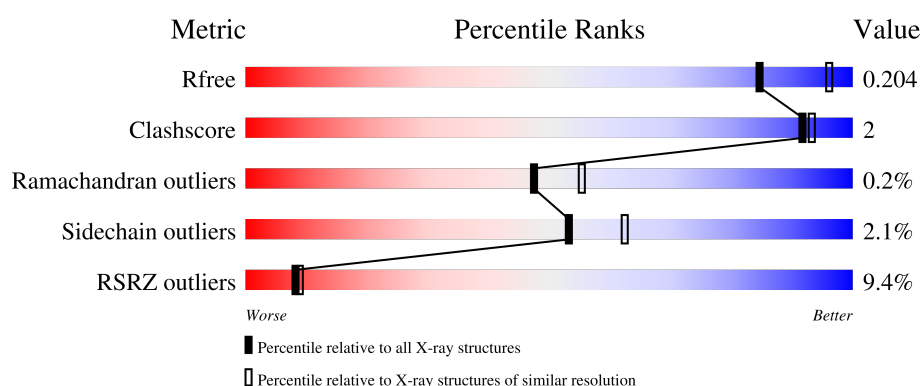
1 Overall quality at a glance

The following experimental techniques were used to determine the structure:

X-RAY DIFFRACTION

The reported resolution of this entry is 2.25 Å.

Percentile scores (ranging between 0-100) for global validation metrics of the entry are shown in the following graphic. The table shows the number of entries on which the scores are based.



Metric	Whole archive (#Entries)	Similar resolution (#Entries, resolution range(Å))
R_{free}	130704	1377 (2.26-2.26)
Clashscore	141614	1487 (2.26-2.26)
Ramachandran outliers	138981	1449 (2.26-2.26)
Sidechain outliers	138945	1450 (2.26-2.26)
RSRZ outliers	127900	1356 (2.26-2.26)

The table below summarises the geometric issues observed across the polymeric chains and their fit to the electron density. The red, orange, yellow and green segments of the lower bar indicate the fraction of residues that contain outliers for ≥ 3 , 2, 1 and 0 types of geometric quality criteria respectively. A grey segment represents the fraction of residues that are not modelled. The numeric value for each fraction is indicated below the corresponding segment, with a dot representing fractions $\leq 5\%$. The upper red bar (where present) indicates the fraction of residues that have poor fit to the electron density. The numeric value is given above the bar.

Mol	Chain	Length	Quality of chain
1	A	574	<div> <div>6%</div> <div>89%</div> <div>6%</div> <div>5%</div> </div>
1	B	574	<div> <div>11%</div> <div>89%</div> <div>5%</div> <div>6%</div> </div>

2 Entry composition [i](#)

There are 6 unique types of molecules in this entry. The entry contains 9150 atoms, of which 126 are hydrogens and 0 are deuteriums.

In the tables below, the ZeroOcc column contains the number of atoms modelled with zero occupancy, the AltConf column contains the number of residues with at least one atom in alternate conformation and the Trace column contains the number of residues modelled with at most 2 atoms.

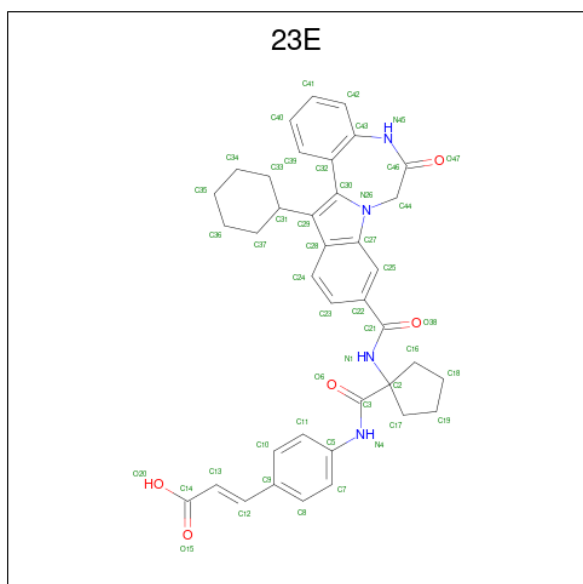
- Molecule 1 is a protein called RNA-directed RNA polymerase.

Mol	Chain	Residues	Atoms					ZeroOcc	AltConf	Trace
1	A	545	Total	C	N	O	S	0	2	0
			4218	2662	743	780	33			
1	B	540	Total	C	N	O	S	0	3	0
			4185	2632	739	782	32			

There are 2 discrepancies between the modelled and reference sequences:

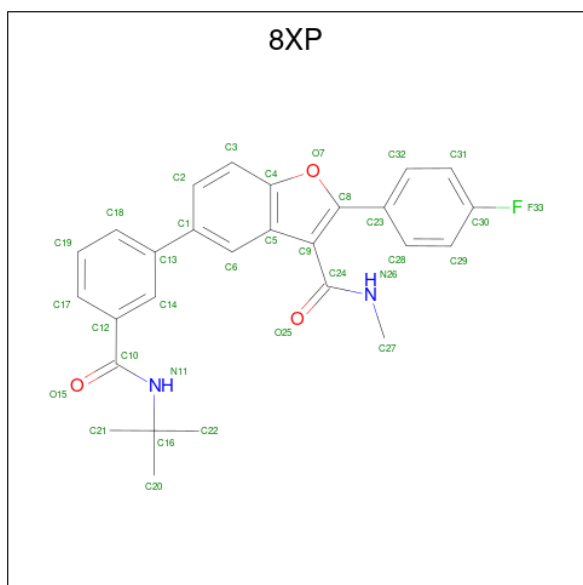
Chain	Residue	Modelled	Actual	Comment	Reference
A	0	MET	-	expression tag	UNP Q9WMX2
B	0	MET	-	expression tag	UNP Q9WMX2

- Molecule 2 is (2E)-3-(4-{[(1-{[(13-cyclohexyl-6-oxo-6,7-dihydro-5H-indolo[1,2-d][1,4]benzodiazepin-10-yl)carbonyl]amino}cyclopentyl)carbonyl]amino}phenyl)prop-2-enoic acid (three-letter code: 23E) (formula: C₃₈H₃₈N₄O₅).



Mol	Chain	Residues	Atoms					ZeroOcc	AltConf
2	A	1	Total	C	H	N	O	38	0
			85	38	38	4	5		
2	B	1	Total	C	H	N	O	38	0
			85	38	38	4	5		

- Molecule 3 is 5-[3-(tert-butylcarbamoyl)phenyl]-2-(4-fluorophenyl)-N-methyl-1-benzofuran-3-carboxamide (three-letter code: 8XP) (formula: C₂₇H₂₅FN₂O₃).



Mol	Chain	Residues	Atoms						ZeroOcc	AltConf
3	A	1	Total 58	C 27	F 1	H 25	N 2	O 3	25	0
3	B	1	Total 58	C 27	F 1	H 25	N 2	O 3	25	0

- Molecule 4 is SULFATE ION (three-letter code: SO4) (formula: O₄S).



Mol	Chain	Residues	Atoms			ZeroOcc	AltConf
4	A	1	Total	O	S	0	0
			5	4	1		
4	A	1	Total	O	S	0	0
			5	4	1		
4	A	1	Total	O	S	0	0
			5	4	1		
4	A	1	Total	O	S	0	0
			5	4	1		
4	B	1	Total	O	S	0	0
			5	4	1		
4	B	1	Total	O	S	0	0
			5	4	1		
4	B	1	Total	O	S	0	0
			5	4	1		
4	B	1	Total	O	S	0	0
			5	4	1		
4	B	1	Total	O	S	0	0
			5	4	1		

- Molecule 5 is GLYCEROL (three-letter code: GOL) (formula: C₃H₈O₃).



Mol	Chain	Residues	Atoms			ZeroOcc	AltConf
5	A	1	Total	C	O	0	0
			6	3	3		
5	A	1	Total	C	O	0	0
			6	3	3		
5	A	1	Total	C	O	0	0
			6	3	3		
5	A	1	Total	C	O	0	0
			6	3	3		
5	A	1	Total	C	O	0	0
			6	3	3		
5	A	1	Total	C	O	0	0
			6	3	3		
5	B	1	Total	C	O	0	0
			6	3	3		
5	B	1	Total	C	O	0	0
			6	3	3		
5	B	1	Total	C	O	0	0
			6	3	3		

- Molecule 6 is water.

Mol	Chain	Residues	Atoms		ZeroOcc	AltConf
6	A	180	Total	O	0	0
			180	180		

Continued on next page...

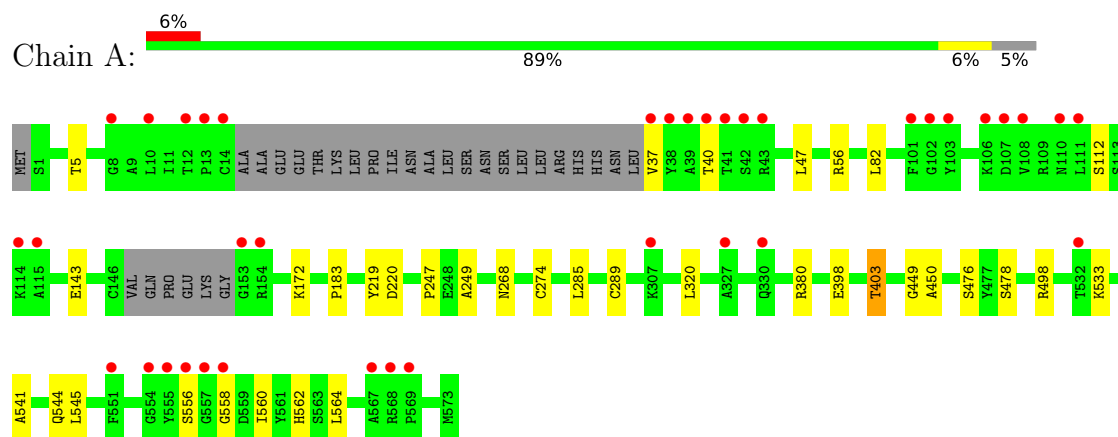
Continued from previous page...

Mol	Chain	Residues	Atoms		ZeroOcc	AltConf
6	B	165	Total 165	O 165	0	0

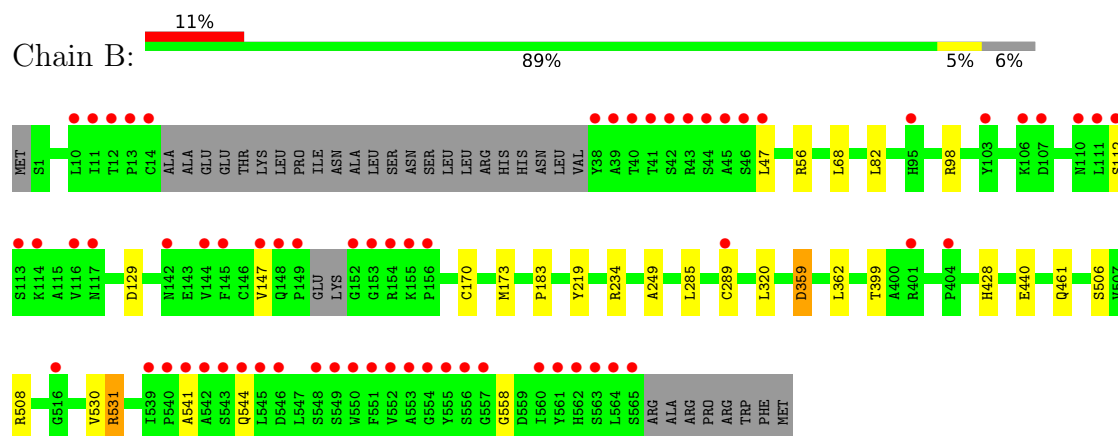
3 Residue-property plots [i](#)

These plots are drawn for all protein, RNA, DNA and oligosaccharide chains in the entry. The first graphic for a chain summarises the proportions of the various outlier classes displayed in the second graphic. The second graphic shows the sequence view annotated by issues in geometry and electron density. Residues are color-coded according to the number of geometric quality criteria for which they contain at least one outlier: green = 0, yellow = 1, orange = 2 and red = 3 or more. A red dot above a residue indicates a poor fit to the electron density ($RSRZ > 2$). Stretches of 2 or more consecutive residues without any outlier are shown as a green connector. Residues present in the sample, but not in the model, are shown in grey.

• Molecule 1: RNA-directed RNA polymerase



• Molecule 1: RNA-directed RNA polymerase



4 Data and refinement statistics

Property	Value	Source
Space group	P 21 21 21	Depositor
Cell constants a, b, c, α , β , γ	66.00Å 91.30Å 234.30Å 90.00° 90.00° 90.00°	Depositor
Resolution (Å)	42.53 – 2.25 42.53 – 2.25	Depositor EDS
% Data completeness (in resolution range)	96.7 (42.53-2.25) 96.8 (42.53-2.25)	Depositor EDS
R_{merge}	(Not available)	Depositor
R_{sym}	0.07	Depositor
$\langle I/\sigma(I) \rangle$ ¹	3.47 (at 2.24Å)	Xtriage
Refinement program	BUSTER 2.11.7	Depositor
R, R_{free}	0.189 , 0.204 0.186 , 0.204	Depositor DCC
R_{free} test set	1387 reflections (2.10%)	wwPDB-VP
Wilson B-factor (Å ²)	34.5	Xtriage
Anisotropy	0.476	Xtriage
Bulk solvent k_{sol} (e/Å ³), B_{sol} (Å ²)	0.37 , 54.6	EDS
L-test for twinning ²	$\langle L \rangle = 0.50$, $\langle L^2 \rangle = 0.33$	Xtriage
Estimated twinning fraction	No twinning to report.	Xtriage
F_o, F_c correlation	0.95	EDS
Total number of atoms	9150	wwPDB-VP
Average B, all atoms (Å ²)	45.0	wwPDB-VP

Xtriage's analysis on translational NCS is as follows: *The largest off-origin peak in the Patterson function is 4.47% of the height of the origin peak. No significant pseudotranslation is detected.*

¹Intensities estimated from amplitudes.

²Theoretical values of $\langle |L| \rangle$, $\langle L^2 \rangle$ for acentric reflections are 0.5, 0.333 respectively for untwinned datasets, and 0.375, 0.2 for perfectly twinned datasets.

5 Model quality

5.1 Standard geometry

Bond lengths and bond angles in the following residue types are not validated in this section: GOL, 8XP, 23E, SO4

The Z score for a bond length (or angle) is the number of standard deviations the observed value is removed from the expected value. A bond length (or angle) with $|Z| > 5$ is considered an outlier worth inspection. RMSZ is the root-mean-square of all Z scores of the bond lengths (or angles).

Mol	Chain	Bond lengths		Bond angles	
		RMSZ	# Z >5	RMSZ	# Z >5
1	A	0.53	0/4314	0.64	0/5859
1	B	0.51	0/4275	0.63	0/5806
All	All	0.52	0/8589	0.63	0/11665

There are no bond length outliers.

There are no bond angle outliers.

There are no chirality outliers.

There are no planarity outliers.

5.2 Too-close contacts

In the following table, the Non-H and H(model) columns list the number of non-hydrogen atoms and hydrogen atoms in the chain respectively. The H(added) column lists the number of hydrogen atoms added and optimized by MolProbity. The Clashes column lists the number of clashes within the asymmetric unit, whereas Symm-Clashes lists symmetry-related clashes.

Mol	Chain	Non-H	H(model)	H(added)	Clashes	Symm-Clashes
1	A	4218	0	4167	14	0
1	B	4185	0	4130	15	0
2	A	47	38	37	1	0
2	B	47	38	37	0	0
3	A	33	25	0	0	0
3	B	33	25	0	0	0
4	A	20	0	0	0	0
4	B	30	0	0	0	0
5	A	42	0	56	2	0
5	B	24	0	32	1	0
6	A	180	0	0	0	0

Continued on next page...

Continued from previous page...

Mol	Chain	Non-H	H(model)	H(added)	Clashes	Symm-Clashes
6	B	165	0	0	0	0
All	All	9024	126	8459	28	0

The all-atom clashscore is defined as the number of clashes found per 1000 atoms (including hydrogen atoms). The all-atom clashscore for this structure is 2.

All (28) close contacts within the same asymmetric unit are listed below, sorted by their clash magnitude.

Atom-1	Atom-2	Interatomic distance (Å)	Clash overlap (Å)
1:A:40:THR:HG22	1:A:143:GLU:H	1.54	0.73
1:A:398:GLU:HG2	1:A:403:THR:HG21	1.70	0.73
1:A:478:SER:HB2	5:A:612:GOL:H32	1.70	0.73
1:A:219:TYR:HB3	1:A:320:LEU:HD23	1.84	0.60
1:B:82:LEU:HD13	1:B:249:ALA:HB2	1.88	0.56
1:B:219:TYR:HB3	1:B:320:LEU:HD23	1.88	0.55
1:A:82:LEU:HD13	1:A:249:ALA:HB2	1.90	0.54
1:A:183:PRO:HG3	1:A:289:CYS:SG	2.54	0.47
1:B:399:THR:HG21	1:B:428:HIS:NE2	2.29	0.47
1:A:172:LYS:HE3	1:A:560:ILE:HD13	1.96	0.47
1:B:531[A]:ARG:HD3	1:B:531[A]:ARG:H	1.79	0.47
1:B:285:LEU:HA	1:B:558:GLY:HA2	1.97	0.46
1:A:285:LEU:HA	1:A:558:GLY:HA2	1.98	0.46
1:A:247:PRO:HG3	1:B:234:ARG:CD	2.46	0.46
1:B:129:ASP:HA	5:B:612:GOL:H32	1.98	0.46
1:A:268:ASN:HB3	1:A:274:CYS:SG	2.57	0.44
1:B:440:GLU:H	1:B:440:GLU:CD	2.21	0.44
1:B:359[B]:ASP:HB3	1:B:362:LEU:HD12	1.99	0.43
1:A:541:ALA:O	1:A:544:GLN:HG2	2.20	0.42
1:A:37:VAL:HG21	2:A:601:23E:H41	2.01	0.42
1:A:545:LEU:HD22	1:A:564:LEU:HD11	2.01	0.42
1:B:170:CYS:HA	1:B:173:MET:CE	2.50	0.41
1:B:541:ALA:O	1:B:544:GLN:HG2	2.20	0.41
1:B:170:CYS:HA	1:B:173:MET:HE3	2.02	0.41
5:A:608:GOL:H11	1:B:68:LEU:HD23	2.02	0.40
1:A:450:ALA:HB1	1:A:562:HIS:CE1	2.56	0.40
1:B:183:PRO:HG3	1:B:289:CYS:SG	2.61	0.40
1:B:508:ARG:NH1	1:B:530:VAL:HG11	2.36	0.40

There are no symmetry-related clashes.

5.3 Torsion angles

5.3.1 Protein backbone

In the following table, the Percentiles column shows the percent Ramachandran outliers of the chain as a percentile score with respect to all X-ray entries followed by that with respect to entries of similar resolution.

The Analysed column shows the number of residues for which the backbone conformation was analysed, and the total number of residues.

Mol	Chain	Analysed	Favoured	Allowed	Outliers	Percentiles	
1	A	541/574 (94%)	531 (98%)	9 (2%)	1 (0%)	47	55
1	B	537/574 (94%)	529 (98%)	7 (1%)	1 (0%)	47	55
All	All	1078/1148 (94%)	1060 (98%)	16 (2%)	2 (0%)	47	55

All (2) Ramachandran outliers are listed below:

Mol	Chain	Res	Type
1	B	147	VAL
1	A	449	GLY

5.3.2 Protein sidechains

In the following table, the Percentiles column shows the percent sidechain outliers of the chain as a percentile score with respect to all X-ray entries followed by that with respect to entries of similar resolution.

The Analysed column shows the number of residues for which the sidechain conformation was analysed, and the total number of residues.

Mol	Chain	Analysed	Rotameric	Outliers	Percentiles	
1	A	448/486 (92%)	437 (98%)	11 (2%)	47	56
1	B	448/486 (92%)	438 (98%)	10 (2%)	52	61
All	All	896/972 (92%)	875 (98%)	21 (2%)	53	59

All (21) residues with a non-rotameric sidechain are listed below:

Mol	Chain	Res	Type
1	A	5	THR
1	A	47	LEU
1	A	56	ARG
1	A	112	SER

Continued on next page...

Continued from previous page...

Mol	Chain	Res	Type
1	A	220	ASP
1	A	380	ARG
1	A	403	THR
1	A	476	SER
1	A	498	ARG
1	A	533	LYS
1	A	556	SER
1	B	47	LEU
1	B	56	ARG
1	B	98	ARG
1	B	112	SER
1	B	359[A]	ASP
1	B	359[B]	ASP
1	B	461	GLN
1	B	506	SER
1	B	531[A]	ARG
1	B	531[B]	ARG

Sometimes sidechains can be flipped to improve hydrogen bonding and reduce clashes. All (2) such sidechains are listed below:

Mol	Chain	Res	Type
1	A	562	HIS
1	B	461	GLN

5.3.3 RNA [i](#)

There are no RNA molecules in this entry.

5.4 Non-standard residues in protein, DNA, RNA chains [i](#)

There are no non-standard protein/DNA/RNA residues in this entry.

5.5 Carbohydrates [i](#)

There are no monosaccharides in this entry.

5.6 Ligand geometry [i](#)

25 ligands are modelled in this entry.

In the following table, the Counts columns list the number of bonds (or angles) for which Mogul statistics could be retrieved, the number of bonds (or angles) that are observed in the model and the number of bonds (or angles) that are defined in the Chemical Component Dictionary. The Link column lists molecule types, if any, to which the group is linked. The Z score for a bond length (or angle) is the number of standard deviations the observed value is removed from the expected value. A bond length (or angle) with $|Z| > 2$ is considered an outlier worth inspection. RMSZ is the root-mean-square of all Z scores of the bond lengths (or angles).

Mol	Type	Chain	Res	Link	Bond lengths			Bond angles		
					Counts	RMSZ	# $ Z > 2$	Counts	RMSZ	# $ Z > 2$
4	SO4	A	605	-	4,4,4	0.37	0	6,6,6	0.34	0
4	SO4	A	604	-	4,4,4	0.23	0	6,6,6	0.22	0
5	GOL	A	612	-	5,5,5	0.20	0	5,5,5	0.46	0
5	GOL	A	610	-	5,5,5	0.07	0	5,5,5	0.28	0
5	GOL	A	608	-	5,5,5	0.11	0	5,5,5	0.67	0
5	GOL	B	610	-	5,5,5	0.11	0	5,5,5	0.18	0
4	SO4	B	605	-	4,4,4	0.31	0	6,6,6	0.20	0
5	GOL	A	609	-	5,5,5	0.20	0	5,5,5	0.27	0
4	SO4	B	604	-	4,4,4	0.28	0	6,6,6	0.37	0
3	8XP	A	602	-	31,36,36	0.65	1 (3%)	42,53,53	0.95	1 (2%)
4	SO4	A	606	-	4,4,4	0.31	0	6,6,6	0.31	0
2	23E	B	601	-	46,53,53	0.80	1 (2%)	60,77,77	0.55	0
5	GOL	A	613	-	5,5,5	0.08	0	5,5,5	0.27	0
4	SO4	A	603	-	4,4,4	0.07	0	6,6,6	0.08	0
3	8XP	B	602	-	31,36,36	0.64	1 (3%)	42,53,53	1.02	1 (2%)
5	GOL	B	609	-	5,5,5	0.13	0	5,5,5	0.29	0
4	SO4	B	606	-	4,4,4	0.18	0	6,6,6	0.14	0
4	SO4	B	603	-	4,4,4	0.08	0	6,6,6	0.21	0
5	GOL	B	612	-	5,5,5	0.05	0	5,5,5	0.39	0
5	GOL	A	607	-	5,5,5	0.16	0	5,5,5	0.58	0
5	GOL	A	611	-	5,5,5	0.04	0	5,5,5	0.18	0
5	GOL	B	611	-	5,5,5	0.08	0	5,5,5	0.20	0
4	SO4	B	607	-	4,4,4	0.18	0	6,6,6	0.18	0
4	SO4	B	608	-	4,4,4	0.24	0	6,6,6	0.41	0
2	23E	A	601	-	46,53,53	0.80	1 (2%)	60,77,77	0.55	0

In the following table, the Chirals column lists the number of chiral outliers, the number of chiral centers analysed, the number of these observed in the model and the number defined in the Chemical Component Dictionary. Similar counts are reported in the Torsion and Rings columns. '-' means no outliers of that kind were identified.

Mol	Type	Chain	Res	Link	Chirals	Torsions	Rings
5	GOL	B	612	-	-	0/4/4/4	-
5	GOL	A	608	-	-	0/4/4/4	-

Continued on next page...

Continued from previous page...

Mol	Type	Chain	Res	Link	Chirals	Torsions	Rings
5	GOL	B	610	-	-	0/4/4/4	-
2	23E	B	601	-	-	0/24/57/57	0/6/7/7
5	GOL	A	607	-	-	2/4/4/4	-
5	GOL	A	613	-	-	1/4/4/4	-
5	GOL	A	611	-	-	1/4/4/4	-
5	GOL	B	611	-	-	2/4/4/4	-
5	GOL	A	609	-	-	0/4/4/4	-
3	8XP	B	602	-	-	0/17/23/23	0/4/4/4
5	GOL	B	609	-	-	1/4/4/4	-
5	GOL	A	612	-	-	3/4/4/4	-
3	8XP	A	602	-	-	2/17/23/23	0/4/4/4
2	23E	A	601	-	-	0/24/57/57	0/6/7/7
5	GOL	A	610	-	-	0/4/4/4	-

All (4) bond length outliers are listed below:

Mol	Chain	Res	Type	Atoms	Z	Observed(Å)	Ideal(Å)
2	B	601	23E	C29-C28	3.70	1.44	1.40
2	A	601	23E	C29-C28	3.58	1.44	1.40
3	B	602	8XP	C5-C4	-2.08	1.39	1.43
3	A	602	8XP	C5-C4	-2.02	1.39	1.43

All (2) bond angle outliers are listed below:

Mol	Chain	Res	Type	Atoms	Z	Observed(°)	Ideal(°)
3	B	602	8XP	C23-C8-C9	5.35	134.77	127.13
3	A	602	8XP	C23-C8-C9	4.81	134.00	127.13

There are no chirality outliers.

All (12) torsion outliers are listed below:

Mol	Chain	Res	Type	Atoms
5	A	607	GOL	O1-C1-C2-C3
5	A	612	GOL	O1-C1-C2-C3
5	A	607	GOL	O1-C1-C2-O2
5	A	612	GOL	O1-C1-C2-O2
5	B	609	GOL	O1-C1-C2-C3
5	B	611	GOL	O1-C1-C2-C3
5	A	611	GOL	C1-C2-C3-O3
3	A	602	8XP	C28-C23-C8-C9

Continued on next page...

Continued from previous page...

Mol	Chain	Res	Type	Atoms
3	A	602	8XP	C32-C23-C8-C9
5	A	612	GOL	O2-C2-C3-O3
5	A	613	GOL	O2-C2-C3-O3
5	B	611	GOL	O1-C1-C2-O2

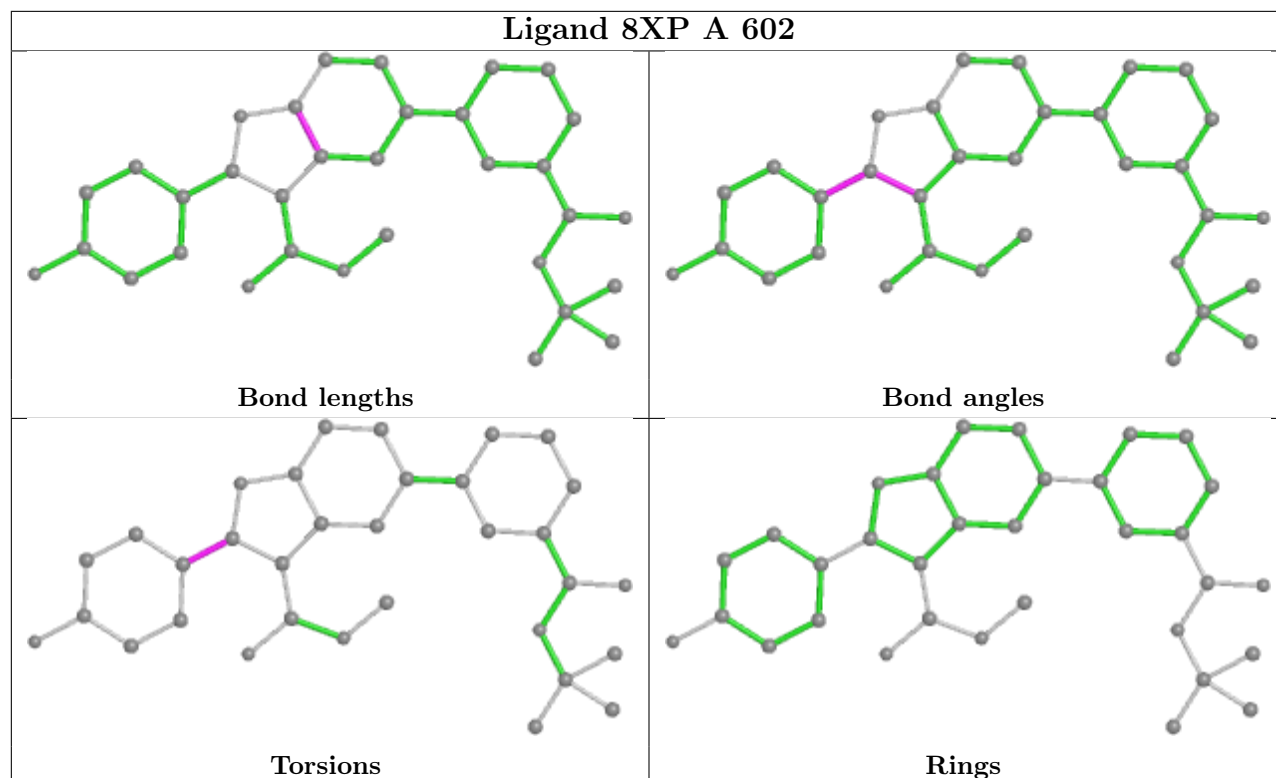
There are no ring outliers.

4 monomers are involved in 4 short contacts:

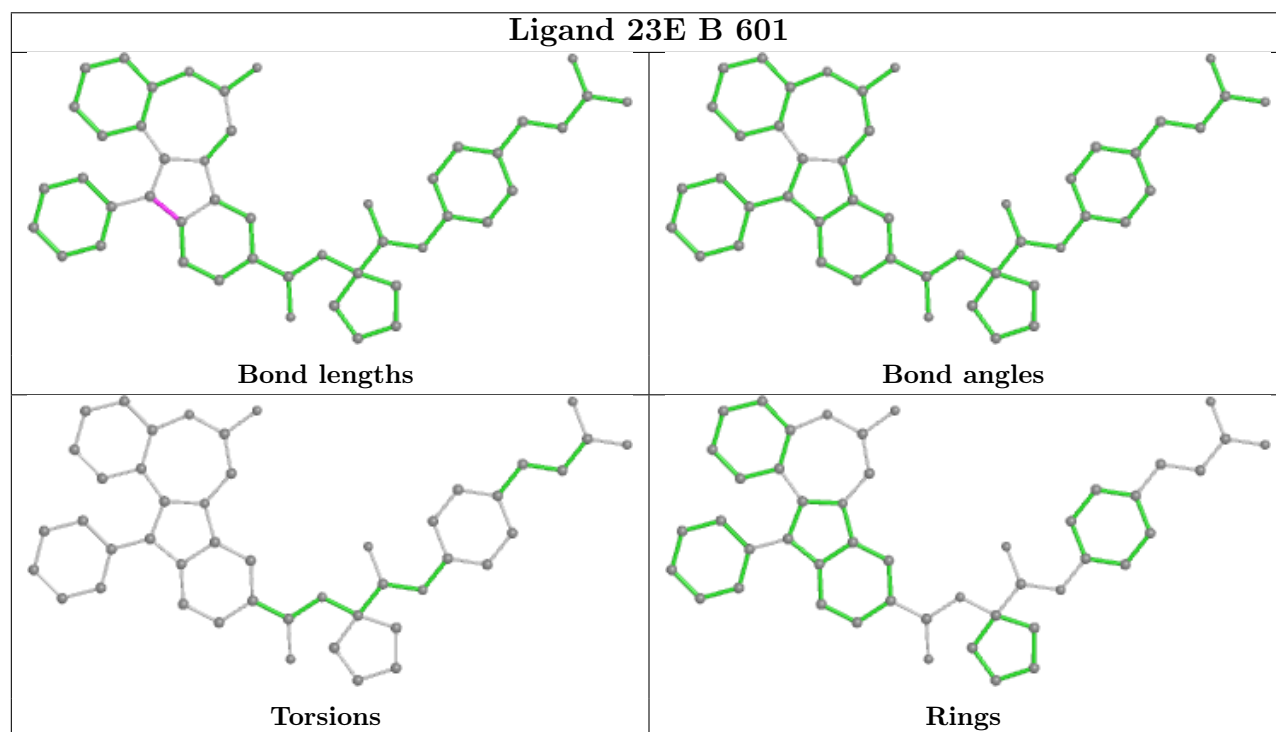
Mol	Chain	Res	Type	Clashes	Symm-Clashes
5	A	612	GOL	1	0
5	A	608	GOL	1	0
5	B	612	GOL	1	0
2	A	601	23E	1	0

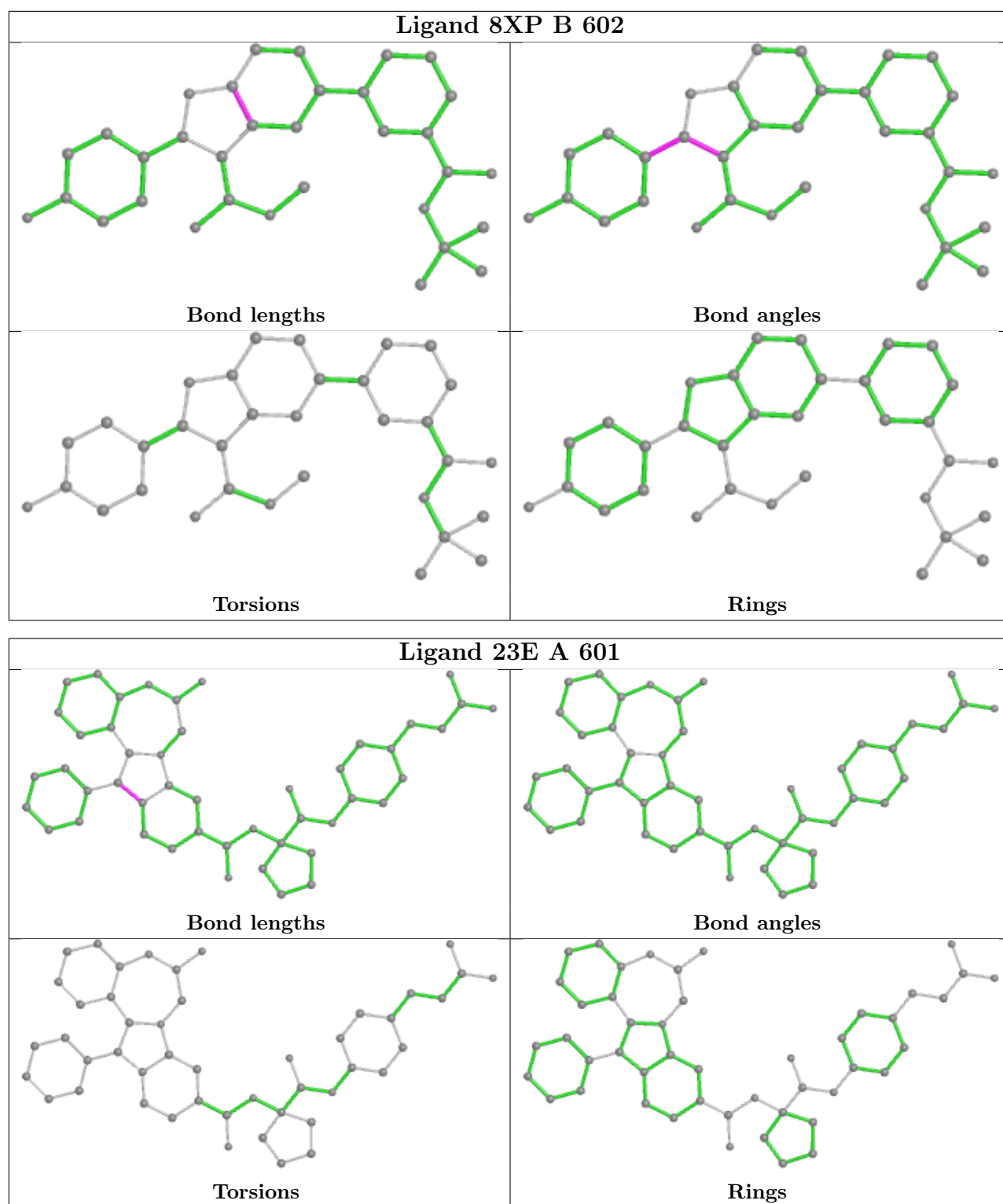
The following is a two-dimensional graphical depiction of Mogul quality analysis of bond lengths, bond angles, torsion angles, and ring geometry for all instances of the Ligand of Interest. In addition, ligands with molecular weight > 250 and outliers as shown on the validation Tables will also be included. For torsion angles, if less than 5% of the Mogul distribution of torsion angles is within 10 degrees of the torsion angle in question, then that torsion angle is considered an outlier. Any bond that is central to one or more torsion angles identified as an outlier by Mogul will be highlighted in the graph. For rings, the root-mean-square deviation (RMSD) between the ring in question and similar rings identified by Mogul is calculated over all ring torsion angles. If the average RMSD is greater than 60 degrees and the minimal RMSD between the ring in question and any Mogul-identified rings is also greater than 60 degrees, then that ring is considered an outlier. The outliers are highlighted in purple. The color gray indicates Mogul did not find sufficient equivalents in the CSD to analyse the geometry.

Ligand 8XP A 602



Ligand 23E B 601





5.7 Other polymers [i](#)

There are no such residues in this entry.

5.8 Polymer linkage issues ⓘ

There are no chain breaks in this entry.

6 Fit of model and data

6.1 Protein, DNA and RNA chains

In the following table, the column labelled ‘#RSRZ> 2’ contains the number (and percentage) of RSRZ outliers, followed by percent RSRZ outliers for the chain as percentile scores relative to all X-ray entries and entries of similar resolution. The OWAB column contains the minimum, median, 95th percentile and maximum values of the occupancy-weighted average B-factor per residue. The column labelled ‘Q< 0.9’ lists the number of (and percentage) of residues with an average occupancy less than 0.9.

Mol	Chain	Analysed	<RSRZ>	#RSRZ>2	OWAB(Å ²)	Q<0.9
1	A	545/574 (94%)	0.17	37 (6%) 17 18	23, 38, 74, 113	0
1	B	540/574 (94%)	0.46	65 (12%) 4 3	24, 39, 106, 146	0
All	All	1085/1148 (94%)	0.31	102 (9%) 8 9	23, 39, 87, 146	0

All (102) RSRZ outliers are listed below:

Mol	Chain	Res	Type	RSRZ
1	B	551	PHE	10.0
1	B	564	LEU	9.3
1	B	149	PRO	8.6
1	A	153	GLY	8.5
1	B	555	TYR	8.0
1	B	153	GLY	7.9
1	B	565	SER	7.8
1	B	545	LEU	7.4
1	B	152	GLY	7.4
1	B	556	SER	7.3
1	B	552	VAL	7.3
1	B	41	THR	7.2
1	B	47	LEU	7.2
1	B	553	ALA	7.2
1	B	546	ASP	7.1
1	B	561	TYR	7.1
1	A	568	ARG	7.0
1	B	554	GLY	6.4
1	A	567	ALA	6.4
1	B	544	GLN	6.4
1	B	39	ALA	6.4
1	B	548	SER	6.2
1	A	37	VAL	5.8
1	B	38	TYR	5.7

Continued on next page...

Continued from previous page...

Mol	Chain	Res	Type	RSRZ
1	B	550	TRP	5.5
1	A	13	PRO	5.4
1	B	147	VAL	5.4
1	B	540	PRO	5.2
1	A	43	ARG	4.8
1	A	41	THR	4.8
1	B	154	ARG	4.7
1	B	541	ALA	4.6
1	A	38	TYR	4.6
1	B	401	ARG	4.5
1	B	12	THR	4.4
1	B	156	PRO	4.4
1	B	14	CYS	4.4
1	B	155	LYS	4.3
1	B	563	SER	4.3
1	B	42	SER	4.2
1	A	12	THR	4.2
1	B	44	SER	4.1
1	B	43	ARG	4.0
1	B	13	PRO	4.0
1	B	562	HIS	3.8
1	A	154	ARG	3.8
1	B	560	ILE	3.7
1	B	404	PRO	3.7
1	A	555	TYR	3.7
1	B	145	PHE	3.6
1	A	39	ALA	3.6
1	A	551	PHE	3.6
1	B	10	LEU	3.6
1	A	40	THR	3.6
1	B	542	ALA	3.5
1	B	95	HIS	3.4
1	B	557	GLY	3.3
1	A	8	GLY	3.3
1	B	543	SER	3.3
1	B	549	SER	3.2
1	A	554	GLY	3.2
1	A	558	GLY	3.1
1	B	106	LYS	3.1
1	B	110	ASN	3.0
1	B	142	ASN	3.0
1	A	556	SER	3.0

Continued on next page...

Continued from previous page...

Mol	Chain	Res	Type	RSRZ
1	A	330	GLN	3.0
1	B	46	SER	3.0
1	A	327	ALA	3.0
1	B	148	GLN	3.0
1	A	10	LEU	3.0
1	A	103	TYR	2.9
1	A	569	PRO	2.9
1	A	107	ASP	2.8
1	B	539	ILE	2.8
1	A	14	CYS	2.8
1	B	113	SER	2.8
1	B	516	GLY	2.7
1	B	103	TYR	2.6
1	B	111	LEU	2.5
1	B	11	ILE	2.5
1	B	107	ASP	2.5
1	A	114	LYS	2.5
1	B	116	VAL	2.4
1	A	106	LYS	2.4
1	A	42	SER	2.4
1	A	108	VAL	2.4
1	A	111	LEU	2.3
1	A	115	ALA	2.3
1	B	112	SER	2.3
1	B	144	VAL	2.3
1	A	101	PHE	2.3
1	B	114	LYS	2.2
1	B	117	ASN	2.2
1	B	40	THR	2.1
1	B	289	CYS	2.1
1	A	102	GLY	2.1
1	A	557	GLY	2.1
1	A	110	ASN	2.0
1	A	307	LYS	2.0
1	A	532	THR	2.0
1	B	45	ALA	2.0

6.2 Non-standard residues in protein, DNA, RNA chains ⓘ

There are no non-standard protein/DNA/RNA residues in this entry.

6.3 Carbohydrates ⓘ

There are no monosaccharides in this entry.

6.4 Ligands ⓘ

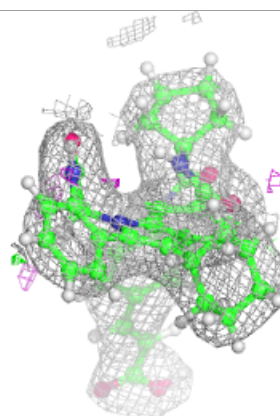
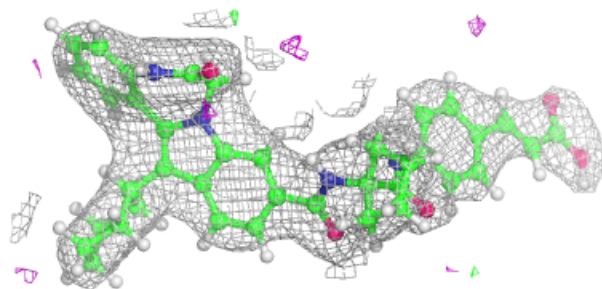
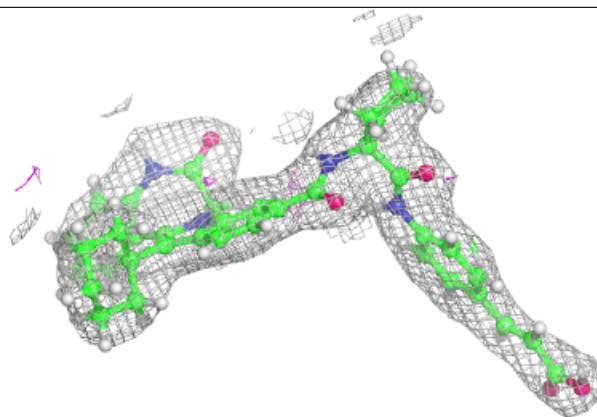
In the following table, the Atoms column lists the number of modelled atoms in the group and the number defined in the chemical component dictionary. The B-factors column lists the minimum, median, 95th percentile and maximum values of B factors of atoms in the group. The column labelled 'Q< 0.9' lists the number of atoms with occupancy less than 0.9.

Mol	Type	Chain	Res	Atoms	RSCC	RSR	B-factors(Å ²)	Q<0.9
4	SO4	B	607	5/5	0.73	0.23	119,119,121,121	0
5	GOL	A	609	6/6	0.79	0.26	49,54,61,62	0
5	GOL	A	611	6/6	0.84	0.32	63,68,70,73	0
4	SO4	B	606	5/5	0.85	0.38	121,122,123,123	0
5	GOL	A	612	6/6	0.87	0.18	30,46,48,51	0
5	GOL	A	613	6/6	0.87	0.26	69,70,72,73	0
5	GOL	B	610	6/6	0.87	0.16	39,48,51,53	0
5	GOL	B	611	6/6	0.88	0.24	81,82,83,84	0
4	SO4	B	605	5/5	0.89	0.12	89,89,91,92	0
5	GOL	B	612	6/6	0.90	0.22	61,74,75,78	0
5	GOL	A	607	6/6	0.91	0.17	36,41,42,44	0
5	GOL	B	609	6/6	0.92	0.16	52,54,55,56	0
4	SO4	B	603	5/5	0.92	0.18	84,87,88,89	0
4	SO4	A	603	5/5	0.93	0.10	102,102,103,103	0
5	GOL	A	610	6/6	0.94	0.17	56,61,64,69	0
2	23E	B	601	47/47	0.94	0.11	28,37,54,65	38
3	8XP	A	602	33/33	0.95	0.12	29,36,41,42	25
4	SO4	B	608	5/5	0.95	0.15	41,44,45,46	5
3	8XP	B	602	33/33	0.95	0.13	25,37,42,44	25
5	GOL	A	608	6/6	0.96	0.13	44,50,55,58	0
4	SO4	A	606	5/5	0.96	0.19	66,66,68,70	0
2	23E	A	601	47/47	0.96	0.10	24,31,56,63	38
4	SO4	B	604	5/5	0.96	0.12	52,54,61,61	0
4	SO4	A	604	5/5	0.96	0.09	74,78,79,80	0
4	SO4	A	605	5/5	0.97	0.09	46,47,48,52	0

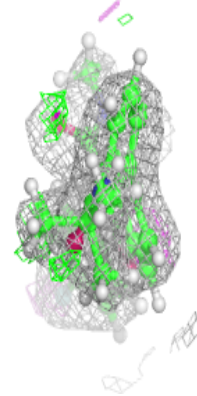
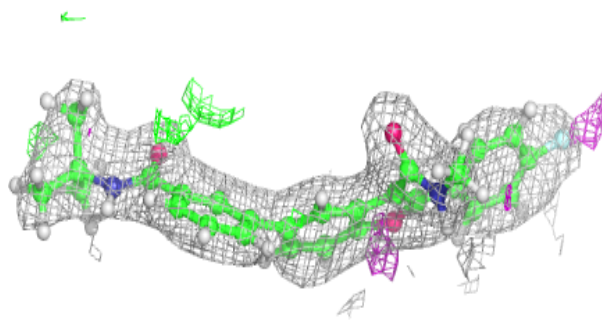
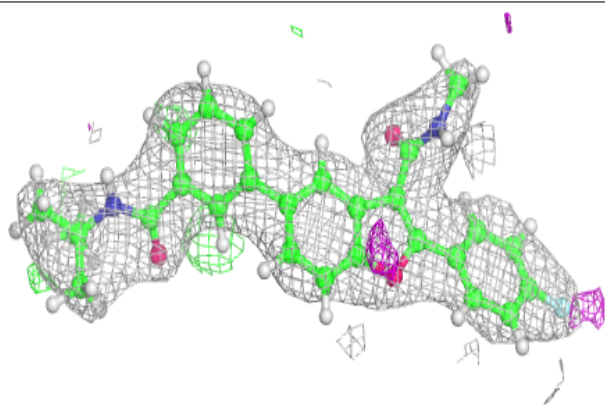
The following is a graphical depiction of the model fit to experimental electron density of all instances of the Ligand of Interest. In addition, ligands with molecular weight > 250 and outliers as shown on the geometry validation Tables will also be included. Each fit is shown from different orientation to approximate a three-dimensional view.

Electron density around 23E B 601:

$2mF_o-DF_c$ (at 0.7 rmsd) in gray
 mF_o-DF_c (at 3 rmsd) in purple (negative)
and green (positive)

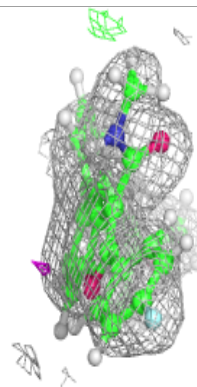
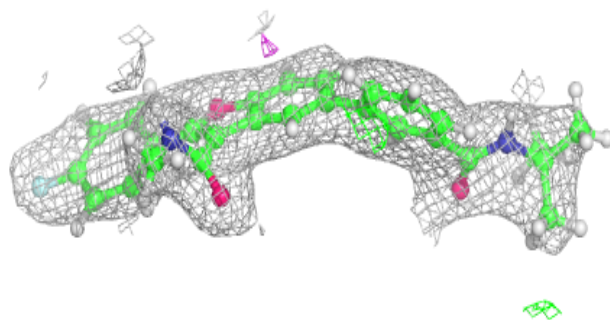
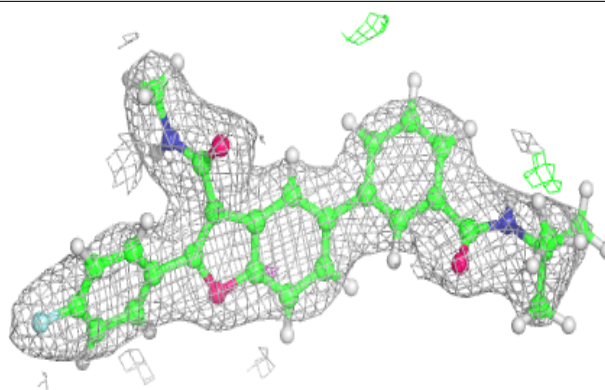
**Electron density around 8XP A 602:**

$2mF_o-DF_c$ (at 0.7 rmsd) in gray
 mF_o-DF_c (at 3 rmsd) in purple (negative)
and green (positive)

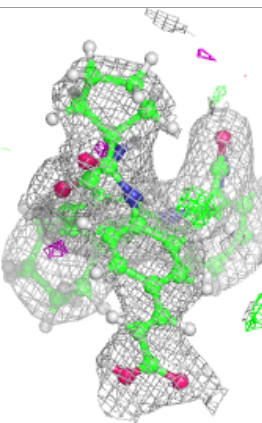
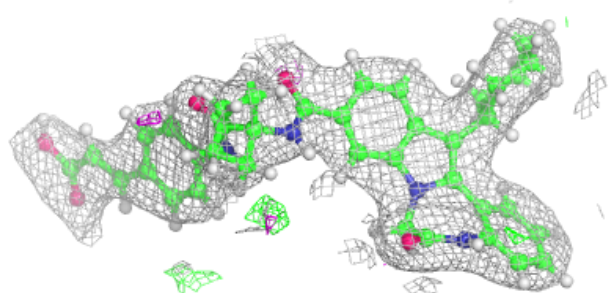
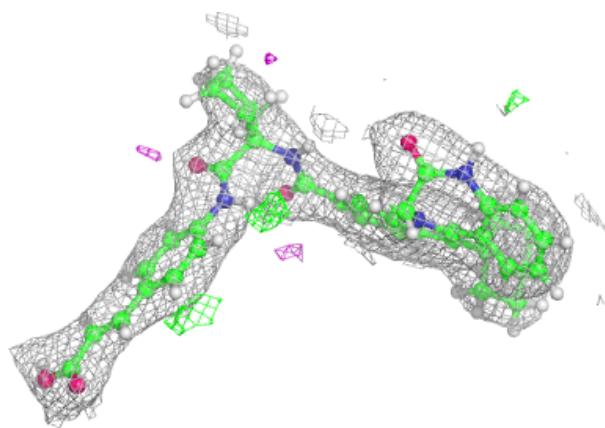


Electron density around 8XP B 602:

$2mF_o-DF_c$ (at 0.7 rmsd) in gray
 mF_o-DF_c (at 3 rmsd) in purple (negative)
and green (positive)

**Electron density around 23E A 601:**

$2mF_o-DF_c$ (at 0.7 rmsd) in gray
 mF_o-DF_c (at 3 rmsd) in purple (negative)
and green (positive)



6.5 Other polymers [i](#)

There are no such residues in this entry.