



# Full wwPDB X-ray Structure Validation Report ⓘ

Apr 29, 2025 – 02:00 AM EDT

PDB ID : 3PXL / pdb\_00003pxl  
Title : Type-2 Cu-depleted fungus laccase from Trametes hirsuta  
Authors : Polyakov, K.M.; Fedorova, T.V.; Kurzeev, S.A.; Popov, A.N.; Lamzin, V.S.;  
Koroleva, O.V.  
Deposited on : 2010-12-10  
Resolution : 1.20 Å(reported)

This is a Full wwPDB X-ray Structure Validation Report for a publicly released PDB entry.

We welcome your comments at [validation@mail.wwpdb.org](mailto:validation@mail.wwpdb.org)

A user guide is available at

<https://www.wwpdb.org/validation/2017/XrayValidationReportHelp>

with specific help available everywhere you see the ⓘ symbol.

The types of validation reports are described at

<http://www.wwpdb.org/validation/2017/FAQs#types>.

---

The following versions of software and data (see [references ⓘ](#)) were used in the production of this report:

MolProbity : 4-5-2 with Phenix2.0rc1  
Mogul : 2022.3.0, CSD as543be (2022)  
Xtriage (Phenix) : 2.0rc1  
EDS : 3.0  
Percentile statistics : 20231227.v01 (using entries in the PDB archive December 27th 2023)  
CCP4 : 9.0.006 (Gargrove)  
Density-Fitness : 1.0.12  
Ideal geometry (proteins) : Engh & Huber (2001)  
Ideal geometry (DNA, RNA) : Parkinson et al. (1996)  
Validation Pipeline (wwPDB-VP) : 2.43.1

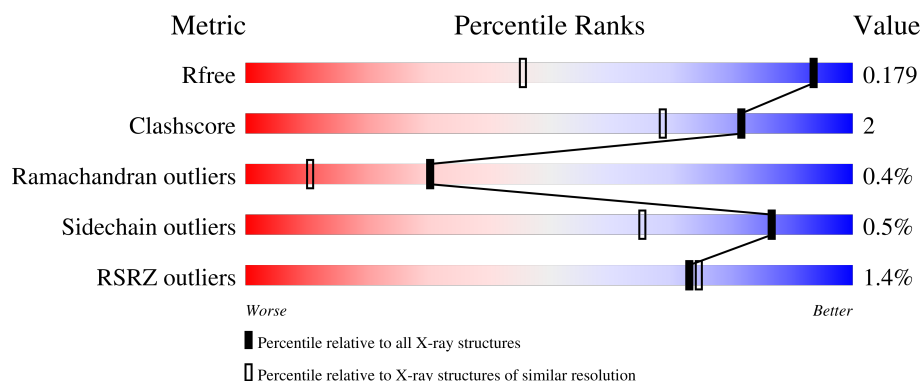
# 1 Overall quality at a glance

The following experimental techniques were used to determine the structure:

## *X-RAY DIFFRACTION*

The reported resolution of this entry is 1.20 Å.

Percentile scores (ranging between 0-100) for global validation metrics of the entry are shown in the following graphic. The table shows the number of entries on which the scores are based.



Metric	Whole archive (#Entries)	Similar resolution (#Entries, resolution range(Å))
$R_{free}$	164625	1079 (1.20-1.20)
Clashscore	180529	1183 (1.20-1.20)
Ramachandran outliers	177936	1146 (1.20-1.20)
Sidechain outliers	177891	1146 (1.20-1.20)
RSRZ outliers	164620	1078 (1.20-1.20)

The table below summarises the geometric issues observed across the polymeric chains and their fit to the electron density. The red, orange, yellow and green segments of the lower bar indicate the fraction of residues that contain outliers for  $\geq 3$ , 2, 1 and 0 types of geometric quality criteria respectively. A grey segment represents the fraction of residues that are not modelled. The numeric value for each fraction is indicated below the corresponding segment, with a dot representing fractions  $\leq 5\%$ . The upper red bar (where present) indicates the fraction of residues that have poor fit to the electron density. The numeric value is given above the bar.

Mol	Chain	Length	Quality of chain
1	A	499	<div> <div></div> <div>94%</div> <div>6%</div> </div>
2	B	7	<div> <div>71%</div> <div>29%</div> </div>
3	C	3	<div> <div>67%</div> <div>33%</div> </div>
4	D	2	<div> <div>50%</div> <div>50%</div> </div>

## 2 Entry composition [i](#)

There are 7 unique types of molecules in this entry. The entry contains 8239 atoms, of which 3602 are hydrogens and 0 are deuteriums.

In the tables below, the ZeroOcc column contains the number of atoms modelled with zero occupancy, the AltConf column contains the number of residues with at least one atom in alternate conformation and the Trace column contains the number of residues modelled with at most 2 atoms.

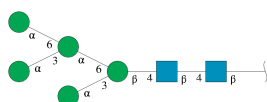
- Molecule 1 is a protein called Laccase.

Mol	Chain	Residues	Atoms						ZeroOcc	AltConf	Trace
			Total	C	H	N	O	S			
1	A	499	7429	2426	3601	657	734	11	1110	16	0

There are 2 discrepancies between the modelled and reference sequences:

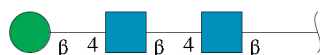
Chain	Residue	Modelled	Actual	Comment	Reference
A	182	VAL	PRO	conflict	UNP B2L9C1
A	316	ALA	SER	conflict	UNP B2L9C1

- Molecule 2 is an oligosaccharide called alpha-D-mannopyranose-(1-3)-[alpha-D-mannopyranose-(1-6)]alpha-D-mannopyranose-(1-6)-[alpha-D-mannopyranose-(1-3)]beta-D-mannopyranose-(1-4)-2-acetamido-2-deoxy-beta-D-glucopyranose-(1-4)-2-acetamido-2-deoxy-beta-D-glucopyranose.



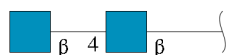
Mol	Chain	Residues	Atoms				ZeroOcc	AltConf	Trace
			Total	C	N	O			
2	B	7	84	46	2	36	0	1	0

- Molecule 3 is an oligosaccharide called beta-D-mannopyranose-(1-4)-2-acetamido-2-deoxy-beta-D-glucopyranose-(1-4)-2-acetamido-2-deoxy-beta-D-glucopyranose.



Mol	Chain	Residues	Atoms					ZeroOcc	AltConf	Trace
3	C	3	Total	C	H	N	O	0	0	0
			40	22	1	2	15			

- Molecule 4 is an oligosaccharide called 2-acetamido-2-deoxy-beta-D-glucopyranose-(1-4)-2-acetamido-2-deoxy-beta-D-glucopyranose.

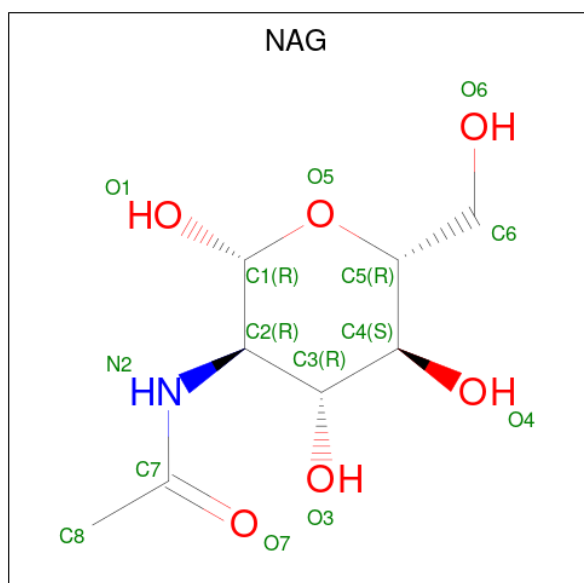


Mol	Chain	Residues	Atoms				ZeroOcc	AltConf	Trace
4	D	2	Total	C	N	O	0	0	0
			28	16	2	10			

- Molecule 5 is COPPER (II) ION (CCD ID: CU) (formula: Cu).

Mol	Chain	Residues	Atoms		ZeroOcc	AltConf
5	A	4	Total	Cu	0	2
			5	5		

- Molecule 6 is 2-acetamido-2-deoxy-beta-D-glucopyranose (CCD ID: NAG) (formula: C<sub>8</sub>H<sub>15</sub>NO<sub>6</sub>).



Mol	Chain	Residues	Atoms				ZeroOcc	AltConf
6	A	1	Total	C	N	O	0	0
			14	8	1	5		

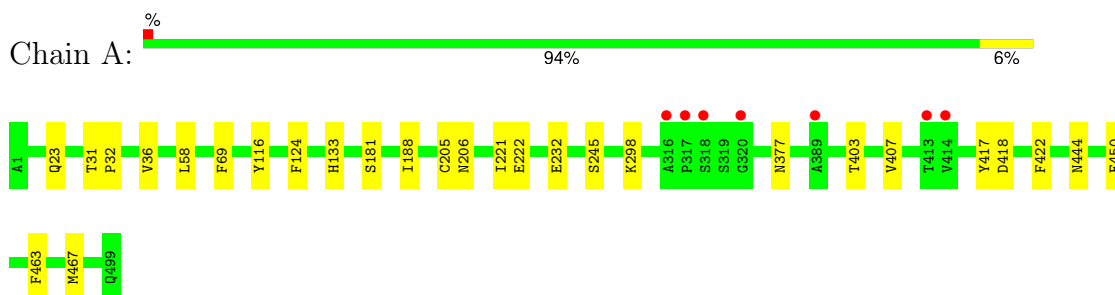
- Molecule 7 is water.

Mol	Chain	Residues	Atoms		ZeroOcc	AltConf
7	A	639	Total 639	O 639	0	0

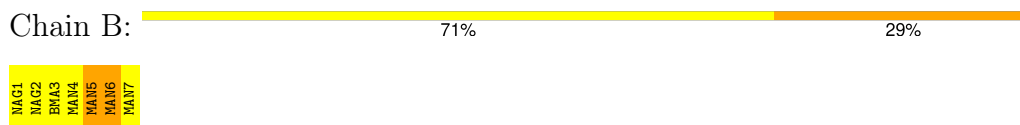
### 3 Residue-property plots

These plots are drawn for all protein, RNA, DNA and oligosaccharide chains in the entry. The first graphic for a chain summarises the proportions of the various outlier classes displayed in the second graphic. The second graphic shows the sequence view annotated by issues in geometry and electron density. Residues are color-coded according to the number of geometric quality criteria for which they contain at least one outlier: green = 0, yellow = 1, orange = 2 and red = 3 or more. A red dot above a residue indicates a poor fit to the electron density ( $RSRZ > 2$ ). Stretches of 2 or more consecutive residues without any outlier are shown as a green connector. Residues present in the sample, but not in the model, are shown in grey.

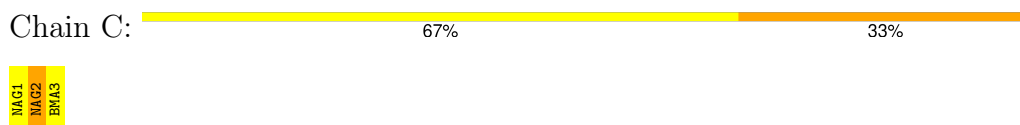
- Molecule 1: Laccase



- Molecule 2: alpha-D-mannopyranose-(1-3)-[alpha-D-mannopyranose-(1-6)]alpha-D-mannopyranose-(1-6)-[alpha-D-mannopyranose-(1-3)]beta-D-mannopyranose-(1-4)-2-acetamido-2-deoxy-beta-D-glucopyranose-(1-4)-2-acetamido-2-deoxy-beta-D-glucopyranose



- Molecule 3: beta-D-mannopyranose-(1-4)-2-acetamido-2-deoxy-beta-D-glucopyranose-(1-4)-2-acetamido-2-deoxy-beta-D-glucopyranose



- Molecule 4: 2-acetamido-2-deoxy-beta-D-glucopyranose-(1-4)-2-acetamido-2-deoxy-beta-D-glucopyranose



## 4 Data and refinement statistics

Property	Value	Source
Space group	P 21 21 21	Depositor
Cell constants a, b, c, $\alpha$ , $\beta$ , $\gamma$	52.65Å 77.05Å 130.22Å 90.00° 90.00° 90.00°	Depositor
Resolution (Å)	60.00 – 1.20 60.00 – 1.20	Depositor EDS
% Data completeness (in resolution range)	97.0 (60.00-1.20) 96.9 (60.00-1.20)	Depositor EDS
$R_{merge}$	(Not available)	Depositor
$R_{sym}$	0.08	Depositor
$\langle I/\sigma(I) \rangle$ <sup>1</sup>	1.18 (at 1.20Å)	Xtriage
Refinement program	REFMAC 5.5.0072	Depositor
R, $R_{free}$	0.153 , 0.179 0.152 , 0.179	Depositor DCC
$R_{free}$ test set	8088 reflections (5.03%)	wwPDB-VP
Wilson B-factor (Å <sup>2</sup> )	15.8	Xtriage
Anisotropy	0.246	Xtriage
Bulk solvent $k_{sol}$ (e/Å <sup>3</sup> ), $B_{sol}$ (Å <sup>2</sup> )	0.45 , 52.1	EDS
L-test for twinning <sup>2</sup>	$\langle  L  \rangle = 0.50$ , $\langle L^2 \rangle = 0.34$	Xtriage
Estimated twinning fraction	No twinning to report.	Xtriage
$F_o, F_c$ correlation	0.98	EDS
Total number of atoms	8239	wwPDB-VP
Average B, all atoms (Å <sup>2</sup> )	20.0	wwPDB-VP

Xtriage's analysis on translational NCS is as follows: *The largest off-origin peak in the Patterson function is 5.66% of the height of the origin peak. No significant pseudotranslation is detected.*

<sup>1</sup>Intensities estimated from amplitudes.

<sup>2</sup>Theoretical values of  $\langle |L| \rangle$ ,  $\langle L^2 \rangle$  for acentric reflections are 0.5, 0.333 respectively for untwinned datasets, and 0.375, 0.2 for perfectly twinned datasets.

## 5 Model quality [i](#)

### 5.1 Standard geometry [i](#)

Bond lengths and bond angles in the following residue types are not validated in this section: CU, BMA, MAN, NAG

The Z score for a bond length (or angle) is the number of standard deviations the observed value is removed from the expected value. A bond length (or angle) with  $|Z| > 5$  is considered an outlier worth inspection. RMSZ is the root-mean-square of all Z scores of the bond lengths (or angles).

Mol	Chain	Bond lengths		Bond angles	
		RMSZ	$\# Z  > 5$	RMSZ	$\# Z  > 5$
1	A	0.91	1/4040 (0.0%)	0.90	1/5548 (0.0%)

All (1) bond length outliers are listed below:

Mol	Chain	Res	Type	Atoms	Z	Observed(Å)	Ideal(Å)
1	A	467	MET	SD-CE	-5.80	1.65	1.79

All (1) bond angle outliers are listed below:

Mol	Chain	Res	Type	Atoms	Z	Observed(°)	Ideal(°)
1	A	467	MET	CG-SD-CE	-6.43	86.74	100.90

There are no chirality outliers.

There are no planarity outliers.

### 5.2 Too-close contacts [i](#)

In the following table, the Non-H and H(model) columns list the number of non-hydrogen atoms and hydrogen atoms in the chain respectively. The H(added) column lists the number of hydrogen atoms added and optimized by MolProbity. The Clashes column lists the number of clashes within the asymmetric unit, whereas Symm-Clashes lists symmetry-related clashes.

Mol	Chain	Non-H	H(model)	H(added)	Clashes	Symm-Clashes
1	A	3828	3601	3607	15	3
2	B	84	0	64	2	0
3	C	39	1	34	1	0
4	D	28	0	25	1	0
5	A	5	0	0	0	0
6	A	14	0	13	0	0

*Continued on next page...*



*Continued from previous page...*

Mol	Chain	Non-H	H(model)	H(added)	Clashes	Symm-Clashes
7	A	639	0	0	5	2
All	All	4637	3602	3743	19	3

The all-atom clashscore is defined as the number of clashes found per 1000 atoms (including hydrogen atoms). The all-atom clashscore for this structure is 2.

All (19) close contacts within the same asymmetric unit are listed below, sorted by their clash magnitude.

Atom-1	Atom-2	Interatomic distance (Å)	Clash overlap (Å)
1:A:69:PHE:HE1	1:A:403[B]:THR:HG23	1.51	0.76
1:A:205[C]:CYS:SG	7:A:646:HOH:O	2.45	0.74
1:A:69:PHE:CE1	1:A:403[B]:THR:HG23	2.22	0.74
1:A:403[A]:THR:CG2	1:A:422:PHE:HB3	2.33	0.59
7:A:1024:HOH:O	4:D:2:NAG:H81	2.07	0.54
1:A:232:GLU:HG2	1:A:298[B]:LYS:HZ2	1.74	0.52
1:A:403[A]:THR:HG22	1:A:422:PHE:HB3	1.91	0.52
1:A:31:THR:HA	1:A:32:PRO:C	2.35	0.50
1:A:407[B]:VAL:HG11	1:A:417:TYR:CE2	2.48	0.48
1:A:116:TYR:CE1	1:A:205[B]:CYS:SG	3.07	0.47
7:A:1086:HOH:O	3:C:2:NAG:H83	2.16	0.45
1:A:377[A]:ASN:OD1	1:A:444:ASN:ND2	2.52	0.43
1:A:36:VAL:O	1:A:124:PHE:HA	2.19	0.43
1:A:222:GLU:HB3	1:A:245:SER:HB2	2.01	0.42
7:A:1004:HOH:O	2:B:5:MAN:H61	2.21	0.41
7:A:1391:HOH:O	2:B:6:MAN:H2	2.21	0.41
1:A:133:HIS:CD2	1:A:221:ILE:HB	2.56	0.40

All (3) symmetry-related close contacts are listed below. The label for Atom-2 includes the symmetry operator and encoded unit-cell translations to be applied.

Atom-1	Atom-2	Interatomic distance (Å)	Clash overlap (Å)
1:A:23:GLN:NE2	7:A:1407:HOH:O[3_645]	1.96	0.24
1:A:181:SER:HG	1:A:418:ASP:OD2[3_545]	1.49	0.11
1:A:23:GLN:HE21	7:A:1407:HOH:O[3_645]	1.60	0.00

## 5.3 Torsion angles [i](#)

### 5.3.1 Protein backbone [i](#)

In the following table, the Percentiles column shows the percent Ramachandran outliers of the chain as a percentile score with respect to all X-ray entries followed by that with respect to entries of similar resolution.

The Analysed column shows the number of residues for which the backbone conformation was analysed, and the total number of residues.

Mol	Chain	Analysed	Favoured	Allowed	Outliers	Percentiles
1	A	514/499 (103%)	505 (98%)	7 (1%)	2 (0%)	30 10

All (2) Ramachandran outliers are listed below:

Mol	Chain	Res	Type
1	A	206	ASN
1	A	58	LEU

### 5.3.2 Protein sidechains [i](#)

In the following table, the Percentiles column shows the percent sidechain outliers of the chain as a percentile score with respect to all X-ray entries followed by that with respect to entries of similar resolution.

The Analysed column shows the number of residues for which the sidechain conformation was analysed, and the total number of residues.

Mol	Chain	Analysed	Rotameric	Outliers	Percentiles
1	A	428/413 (104%)	426 (100%)	2 (0%)	86 65

All (2) residues with a non-rotameric sidechain are listed below:

Mol	Chain	Res	Type
1	A	450	PHE
1	A	463	PHE

Sometimes sidechains can be flipped to improve hydrogen bonding and reduce clashes. All (5) such sidechains are listed below:

Mol	Chain	Res	Type
1	A	84	GLN
1	A	237	GLN

*Continued on next page...*

*Continued from previous page...*

Mol	Chain	Res	Type
1	A	292	ASN
1	A	444	ASN
1	A	499	GLN

### 5.3.3 RNA ⓘ

There are no RNA molecules in this entry.

## 5.4 Non-standard residues in protein, DNA, RNA chains ⓘ

There are no non-standard protein/DNA/RNA residues in this entry.

## 5.5 Carbohydrates ⓘ

13 monosaccharides are modelled in this entry.

In the following table, the Counts columns list the number of bonds (or angles) for which Mogul statistics could be retrieved, the number of bonds (or angles) that are observed in the model and the number of bonds (or angles) that are defined in the Chemical Component Dictionary. The Link column lists molecule types, if any, to which the group is linked. The Z score for a bond length (or angle) is the number of standard deviations the observed value is removed from the expected value. A bond length (or angle) with  $|Z| > 2$  is considered an outlier worth inspection. RMSZ is the root-mean-square of all Z scores of the bond lengths (or angles).

Mol	Type	Chain	Res	Link	Bond lengths			Bond angles		
					Counts	RMSZ	$\# Z  > 2$	Counts	RMSZ	$\# Z  > 2$
2	NAG	B	1	2,1	14,14,15	0.62	0	17,19,21	1.32	2 (11%)
2	NAG	B	2[A]	-	14,14,15	0.71	0	17,19,21	1.30	3 (17%)
2	NAG	B	2[B]	-	14,14,15	0.71	0	17,19,21	1.30	3 (17%)
2	BMA	B	3	2	11,11,12	0.54	0	15,15,17	1.04	1 (6%)
2	MAN	B	4	2	11,11,12	0.68	0	15,15,17	1.62	3 (20%)
2	MAN	B	5	2	11,11,12	0.99	1 (9%)	15,15,17	0.81	1 (6%)
2	MAN	B	6	2	11,11,12	0.39	0	15,15,17	1.67	1 (6%)
2	MAN	B	7	2	11,11,12	0.57	0	15,15,17	1.82	2 (13%)
3	NAG	C	1	3,1	14,14,15	0.67	0	17,19,21	0.78	1 (5%)
3	NAG	C	2	3	14,14,15	0.85	0	17,19,21	1.59	3 (17%)
3	BMA	C	3	3	11,11,12	0.73	0	15,15,17	1.13	1 (6%)
4	NAG	D	1	4,1	14,14,15	1.02	0	17,19,21	0.95	0
4	NAG	D	2	4	14,14,15	0.69	0	17,19,21	0.95	0

In the following table, the Chirals column lists the number of chiral outliers, the number of chiral centers analysed, the number of these observed in the model and the number defined in the Chemical Component Dictionary. Similar counts are reported in the Torsion and Rings columns. '-' means no outliers of that kind were identified.

Mol	Type	Chain	Res	Link	Chirals	Torsions	Rings
2	NAG	B	1	2,1	-	0/6/23/26	0/1/1/1
2	NAG	B	2[A]	-	-	0/6/23/26	0/1/1/1
2	NAG	B	2[B]	-	-	0/6/23/26	0/1/1/1
2	BMA	B	3	2	-	0/2/19/22	0/1/1/1
2	MAN	B	4	2	-	0/2/19/22	0/1/1/1
2	MAN	B	5	2	-	0/2/19/22	0/1/1/1
2	MAN	B	6	2	-	0/2/19/22	0/1/1/1
2	MAN	B	7	2	-	2/2/19/22	0/1/1/1
3	NAG	C	1	3,1	-	0/6/23/26	0/1/1/1
3	NAG	C	2	3	-	2/6/23/26	0/1/1/1
3	BMA	C	3	3	-	0/2/19/22	0/1/1/1
4	NAG	D	1	4,1	-	0/6/23/26	0/1/1/1
4	NAG	D	2	4	-	2/6/23/26	0/1/1/1

All (1) bond length outliers are listed below:

Mol	Chain	Res	Type	Atoms	Z	Observed(Å)	Ideal(Å)
2	B	5	MAN	O4-C4	-2.22	1.37	1.43

All (21) bond angle outliers are listed below:

Mol	Chain	Res	Type	Atoms	Z	Observed(°)	Ideal(°)
2	B	6	MAN	C1-O5-C5	5.62	119.72	112.19
2	B	7	MAN	O5-C5-C4	-3.82	101.53	110.83
2	B	4	MAN	C1-O5-C5	3.75	117.21	112.19
2	B	7	MAN	C1-O5-C5	3.63	117.05	112.19
3	C	2	NAG	O7-C7-C8	-3.43	115.94	122.05
2	B	2[A]	NAG	O4-C4-C5	-3.19	101.46	109.32
2	B	2[B]	NAG	O4-C4-C5	-3.19	101.46	109.32
2	B	1	NAG	O5-C1-C2	-3.15	106.42	111.29
2	B	2[A]	NAG	O5-C1-C2	-3.01	106.64	111.29
2	B	2[B]	NAG	O5-C1-C2	-3.01	106.64	111.29
2	B	3	BMA	C1-C2-C3	-2.76	105.62	109.64
2	B	1	NAG	O4-C4-C5	-2.68	102.72	109.32
3	C	2	NAG	C1-O5-C5	2.67	115.77	112.19
3	C	3	BMA	O2-C2-C1	2.48	114.90	109.22
2	B	2[A]	NAG	C1-C2-N2	-2.33	106.76	110.43
2	B	2[B]	NAG	C1-C2-N2	-2.33	106.76	110.43

*Continued on next page...*

*Continued from previous page...*

Mol	Chain	Res	Type	Atoms	Z	Observed(°)	Ideal(°)
3	C	2	NAG	C2-N2-C7	2.31	126.00	122.90
2	B	5	MAN	C1-O5-C5	2.21	115.15	112.19
2	B	4	MAN	C1-C2-C3	2.14	112.75	109.64
2	B	4	MAN	O6-C6-C5	-2.04	104.39	111.33
3	C	1	NAG	C1-C2-N2	-2.00	107.28	110.43

There are no chirality outliers.

All (6) torsion outliers are listed below:

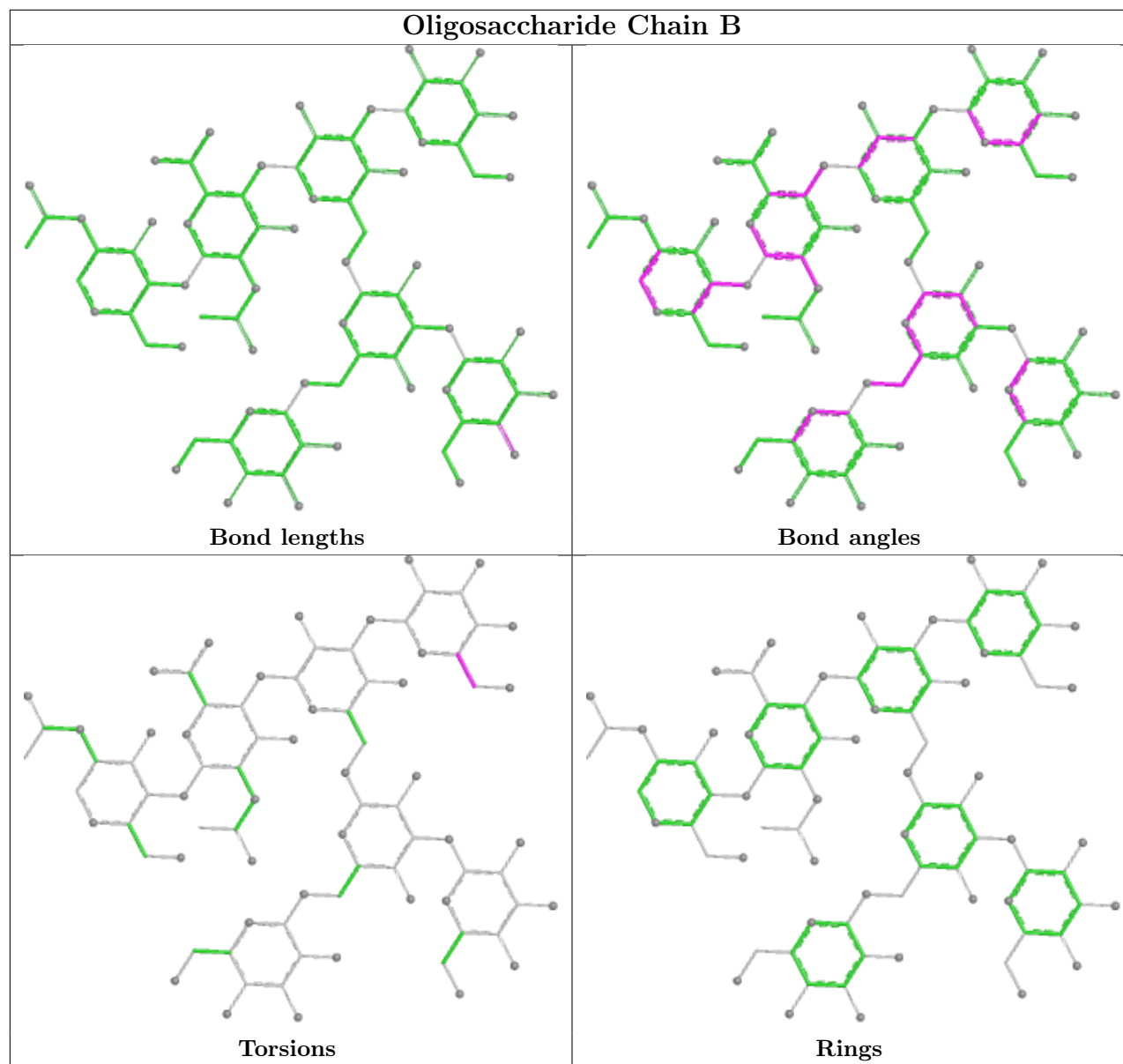
Mol	Chain	Res	Type	Atoms
2	B	7	MAN	O5-C5-C6-O6
3	C	2	NAG	C8-C7-N2-C2
3	C	2	NAG	O7-C7-N2-C2
4	D	2	NAG	C8-C7-N2-C2
4	D	2	NAG	O7-C7-N2-C2
2	B	7	MAN	C4-C5-C6-O6

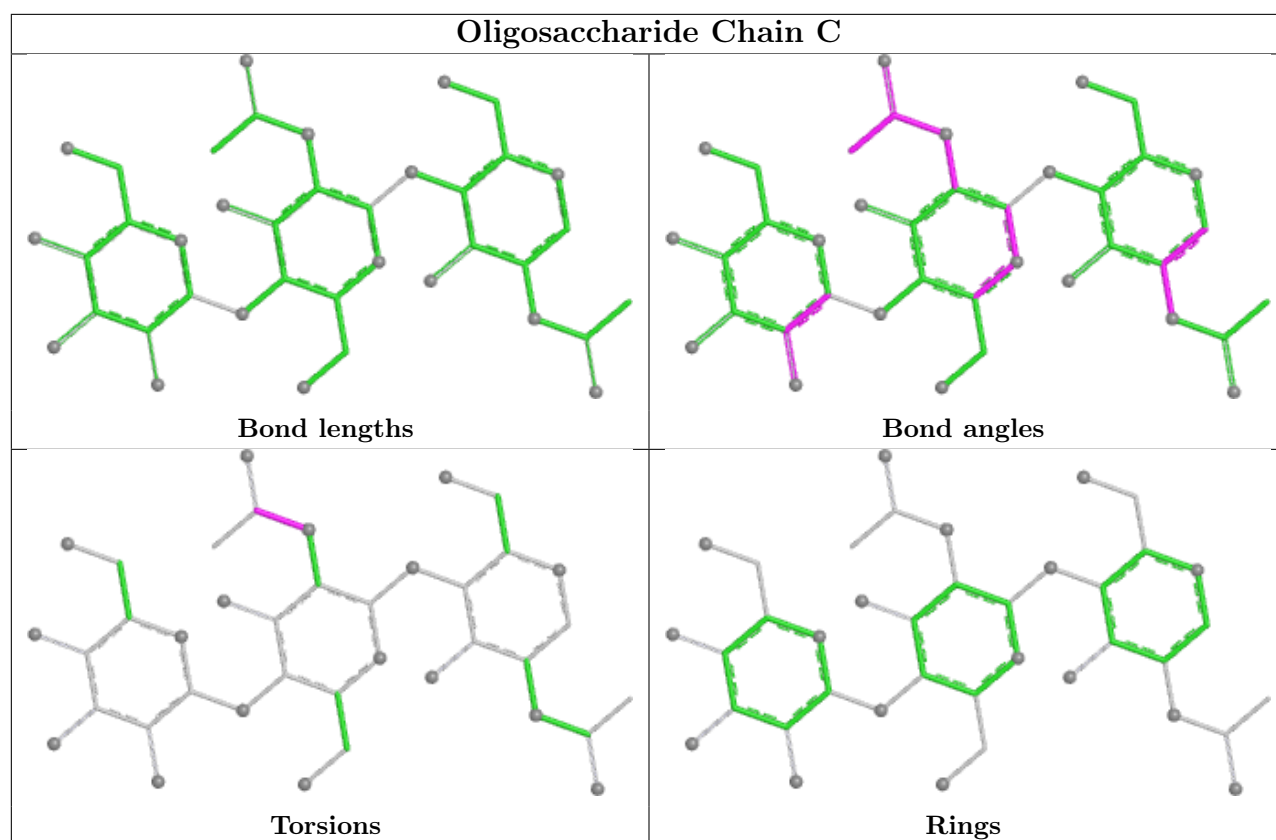
There are no ring outliers.

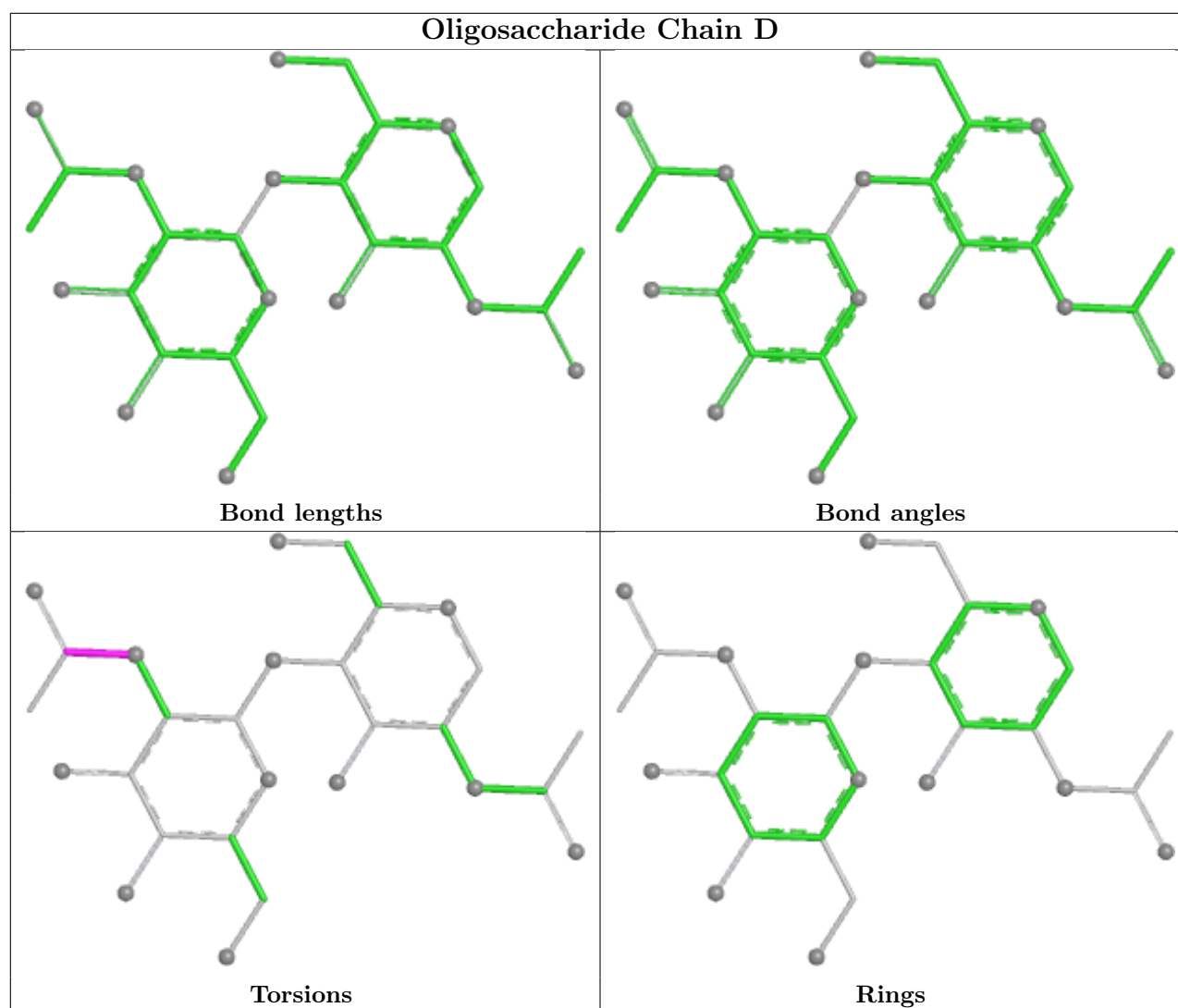
4 monomers are involved in 4 short contacts:

Mol	Chain	Res	Type	Clashes	Symm-Clashes
2	B	6	MAN	1	0
4	D	2	NAG	1	0
3	C	2	NAG	1	0
2	B	5	MAN	1	0

The following is a two-dimensional graphical depiction of Mogul quality analysis of bond lengths, bond angles, torsion angles, and ring geometry for oligosaccharide.







## 5.6 Ligand geometry [i](#)

Of 6 ligands modelled in this entry, 5 are monoatomic - leaving 1 for Mogul analysis.

In the following table, the Counts columns list the number of bonds (or angles) for which Mogul statistics could be retrieved, the number of bonds (or angles) that are observed in the model and the number of bonds (or angles) that are defined in the Chemical Component Dictionary. The Link column lists molecule types, if any, to which the group is linked. The Z score for a bond length (or angle) is the number of standard deviations the observed value is removed from the expected value. A bond length (or angle) with  $|Z| > 2$  is considered an outlier worth inspection. RMSZ is the root-mean-square of all Z scores of the bond lengths (or angles).

Mol	Type	Chain	Res	Link	Bond lengths			Bond angles		
					Counts	RMSZ	$\# Z  > 2$	Counts	RMSZ	$\# Z  > 2$
6	NAG	A	1509	1	14,14,15	0.63	0	17,19,21	1.77	6 (35%)

In the following table, the Chirals column lists the number of chiral outliers, the number of chiral



centers analysed, the number of these observed in the model and the number defined in the Chemical Component Dictionary. Similar counts are reported in the Torsion and Rings columns. '-' means no outliers of that kind were identified.

Mol	Type	Chain	Res	Link	Chirals	Torsions	Rings
6	NAG	A	1509	1	-	0/6/23/26	0/1/1/1

There are no bond length outliers.

All (6) bond angle outliers are listed below:

Mol	Chain	Res	Type	Atoms	Z	Observed(°)	Ideal(°)
6	A	1509	NAG	C1-C2-N2	-2.88	105.90	110.43
6	A	1509	NAG	C2-N2-C7	2.72	126.55	122.90
6	A	1509	NAG	O5-C5-C4	-2.47	104.82	110.83
6	A	1509	NAG	O5-C1-C2	2.45	115.09	111.29
6	A	1509	NAG	C6-C5-C4	2.45	119.04	113.02
6	A	1509	NAG	O5-C5-C6	2.45	112.42	107.66

There are no chirality outliers.

There are no torsion outliers.

There are no ring outliers.

No monomer is involved in short contacts.

## 5.7 Other polymers [i](#)

There are no such residues in this entry.

## 5.8 Polymer linkage issues [i](#)

There are no chain breaks in this entry.

## 6 Fit of model and data [i](#)

### 6.1 Protein, DNA and RNA chains [i](#)

In the following table, the column labelled ‘#RSRZ> 2’ contains the number (and percentage) of RSRZ outliers, followed by percent RSRZ outliers for the chain as percentile scores relative to all X-ray entries and entries of similar resolution. The OWAB column contains the minimum, median, 95<sup>th</sup> percentile and maximum values of the occupancy-weighted average B-factor per residue. The column labelled ‘Q< 0.9’ lists the number of (and percentage) of residues with an average occupancy less than 0.9.

Mol	Chain	Analysed	<RSRZ>	#RSRZ>2	OWAB(Å <sup>2</sup> )	Q<0.9
1	A	499/499 (100%)	-0.24	7 (1%) 73 74	8, 15, 25, 38	16 (3%)

All (7) RSRZ outliers are listed below:

Mol	Chain	Res	Type	RSRZ
1	A	316	ALA	4.8
1	A	317	PRO	3.5
1	A	320	GLY	2.9
1	A	318	SER	2.9
1	A	414	VAL	2.8
1	A	389	ALA	2.4
1	A	413	THR	2.0

### 6.2 Non-standard residues in protein, DNA, RNA chains [i](#)

There are no non-standard protein/DNA/RNA residues in this entry.

### 6.3 Carbohydrates [i](#)

In the following table, the Atoms column lists the number of modelled atoms in the group and the number defined in the chemical component dictionary. The B-factors column lists the minimum, median, 95<sup>th</sup> percentile and maximum values of B factors of atoms in the group. The column labelled ‘Q< 0.9’ lists the number of atoms with occupancy less than 0.9.

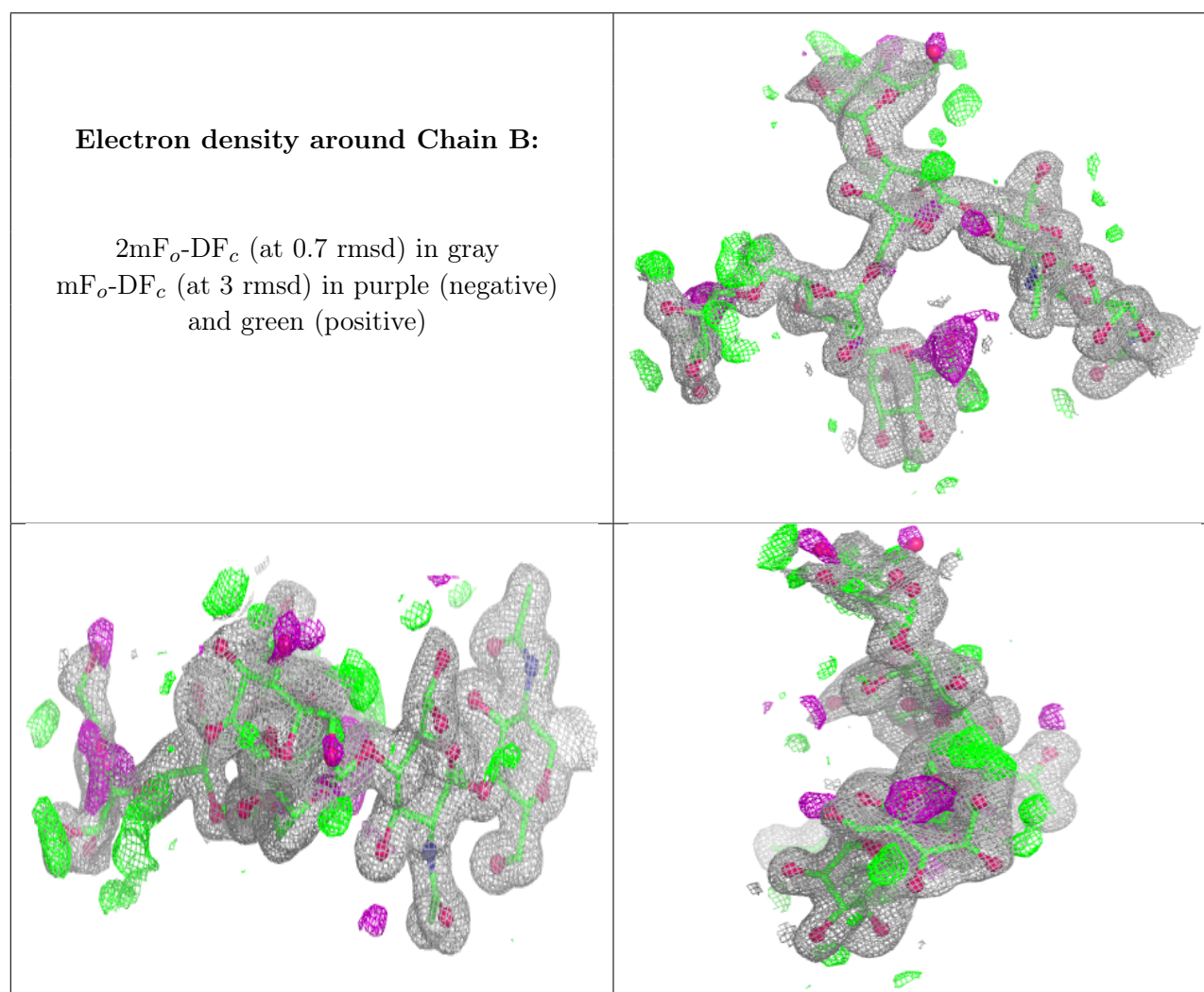
Mol	Type	Chain	Res	Atoms	RSCC	RSR	B-factors(Å <sup>2</sup> )	Q<0.9
2	MAN	B	6	11/12	0.78	0.13	35,38,42,44	0
3	BMA	C	3	11/12	0.78	0.12	35,36,39,41	0
2	MAN	B	7	11/12	0.79	0.12	33,38,46,50	0
4	NAG	D	2	14/15	0.84	0.10	31,37,42,43	0
4	NAG	D	1	14/15	0.85	0.10	25,28,32,33	0

*Continued on next page...*

*Continued from previous page...*

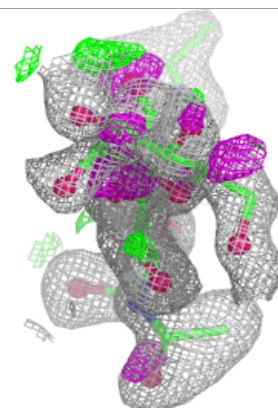
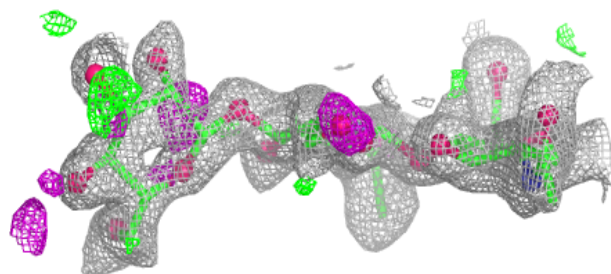
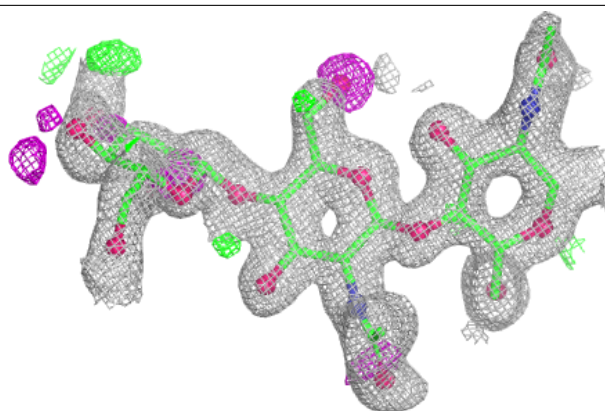
Mol	Type	Chain	Res	Atoms	RSCC	RSR	B-factors( $\text{\AA}^2$ )	Q<0.9
3	NAG	C	2	14/15	0.87	0.09	25,26,34,42	0
2	MAN	B	5	11/12	0.92	0.09	18,20,26,28	0
3	NAG	C	1	14/15	0.93	0.08	22,25,35,37	0
2	MAN	B	4	11/12	0.94	0.08	20,21,23,29	0
2	BMA	B	3	11/12	0.96	0.06	20,21,24,25	0
2	NAG	B	2[A]	14/15	0.97	0.06	16,18,23,25	1
2	NAG	B	2[B]	14/15	0.97	0.06	16,18,23,25	1
2	NAG	B	1	14/15	0.98	0.08	17,19,25,25	0

The following is a graphical depiction of the model fit to experimental electron density for oligosaccharide. Each fit is shown from different orientation to approximate a three-dimensional view.

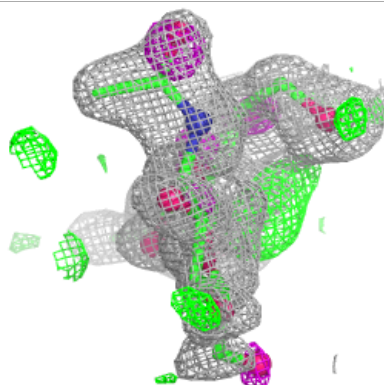
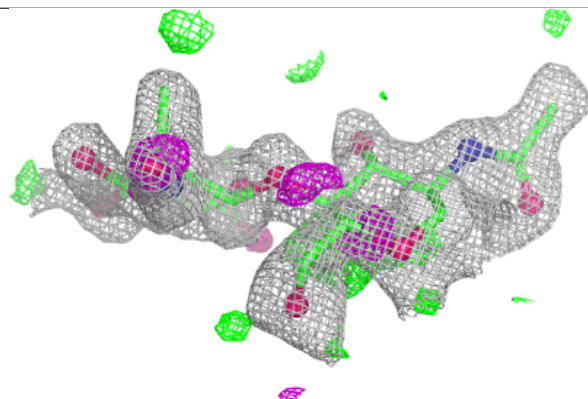
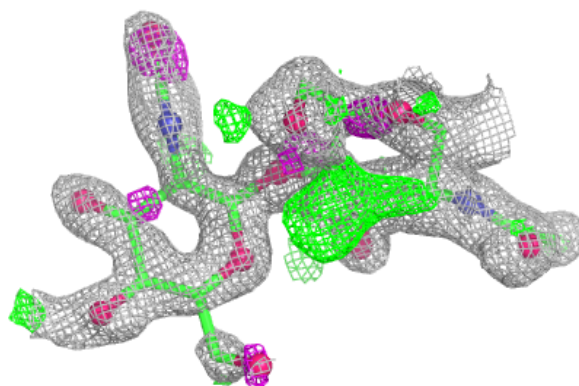


**Electron density around Chain C:**

$2mF_o-DF_c$  (at 0.7 rmsd) in gray  
 $mF_o-DF_c$  (at 3 rmsd) in purple (negative)  
and green (positive)

**Electron density around Chain D:**

$2mF_o-DF_c$  (at 0.7 rmsd) in gray  
 $mF_o-DF_c$  (at 3 rmsd) in purple (negative)  
and green (positive)



## 6.4 Ligands [i](#)

In the following table, the Atoms column lists the number of modelled atoms in the group and the number defined in the chemical component dictionary. The B-factors column lists the minimum, median, 95<sup>th</sup> percentile and maximum values of B factors of atoms in the group. The column labelled 'Q< 0.9' lists the number of atoms with occupancy less than 0.9.

Mol	Type	Chain	Res	Atoms	RSCC	RSR	B-factors(Å <sup>2</sup> )	Q<0.9
6	NAG	A	1509	14/15	0.84	0.12	24,34,39,41	0
5	CU	A	1502[B]	1/1	0.95	0.14	17,17,17,17	1
5	CU	A	1501	1/1	0.99	0.08	16,16,16,16	1
5	CU	A	1500[A]	1/1	0.99	0.04	15,15,15,15	1
5	CU	A	1500[B]	1/1	0.99	0.04	27,27,27,27	1
5	CU	A	1503	1/1	1.00	0.04	14,14,14,14	1

## 6.5 Other polymers [i](#)

There are no such residues in this entry.