



# Full wwPDB EM Validation Report ⓘ

Dec 17, 2024 – 02:25 AM EST

PDB ID : 6PCQ  
EMDB ID : EMD-20304  
Title : E. coli 50S ribosome bound to VM2  
Authors : Pellegrino, J.; Lee, D.J.; Fraser, J.S.; Seiple, I.B.  
Deposited on : 2019-06-18  
Resolution : 2.60 Å(reported)

This is a Full wwPDB EM Validation Report for a publicly released PDB entry.

We welcome your comments at [validation@mail.wwpdb.org](mailto:validation@mail.wwpdb.org)

A user guide is available at

<https://www.wwpdb.org/validation/2017/EMValidationReportHelp>

with specific help available everywhere you see the ⓘ symbol.

The types of validation reports are described at

<http://www.wwpdb.org/validation/2017/FAQs#types>.

---

The following versions of software and data (see [references ⓘ](#)) were used in the production of this report:

EMDB validation analysis : 0.0.1.dev113  
Mogul : 2022.3.0, CSD as543be (2022)  
MolProbity : 4.02b-467  
buster-report : 1.1.7 (2018)  
Percentile statistics : 20231227.v01 (using entries in the PDB archive December 27th 2023)  
MapQ : 1.9.13  
Ideal geometry (proteins) : Engh & Huber (2001)  
Ideal geometry (DNA, RNA) : Parkinson et al. (1996)  
Validation Pipeline (wwPDB-VP) : 2.40

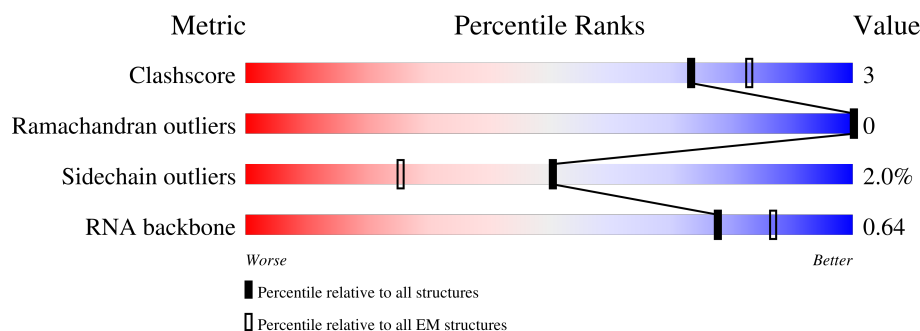
# 1 Overall quality at a glance

The following experimental techniques were used to determine the structure:

*ELECTRON MICROSCOPY*

The reported resolution of this entry is 2.60 Å.

Percentile scores (ranging between 0-100) for global validation metrics of the entry are shown in the following graphic. The table shows the number of entries on which the scores are based.



Metric	Whole archive (#Entries)	EM structures (#Entries)
Clashscore	210492	15764
Ramachandran outliers	207382	16835
Sidechain outliers	206894	16415
RNA backbone	6643	2191

The table below summarises the geometric issues observed across the polymeric chains and their fit to the map. The red, orange, yellow and green segments of the bar indicate the fraction of residues that contain outliers for  $\geq 3$ , 2, 1 and 0 types of geometric quality criteria respectively. A grey segment represents the fraction of residues that are not modelled. The numeric value for each fraction is indicated below the corresponding segment, with a dot representing fractions  $\leq 5\%$ . The upper red bar (where present) indicates the fraction of residues that have poor fit to the EM map (all-atom inclusion  $< 40\%$ ). The numeric value is given above the bar.

Mol	Chain	Length	Quality of chain
1	I	2904	<div> <div>8%</div> <div>78%</div> <div>19%</div> <div>.</div> </div>
2	J	118	<div> <div>.</div> <div>86%</div> <div>14%</div> </div>
3	K	271	<div> <div>.</div> <div>82%</div> <div>16%</div> <div>.</div> </div>
4	L	144	<div> <div>5%</div> <div>86%</div> <div>14%</div> </div>
5	M	201	<div> <div>8%</div> <div>87%</div> <div>13%</div> </div>
6	N	209	<div> <div>.</div> <div>88%</div> <div>11%</div> <div>.</div> </div>
7	O	142	<div> <div>6%</div> <div>87%</div> <div>13%</div> </div>

## 2 Entry composition

There are 8 unique types of molecules in this entry. The entry contains 72125 atoms, of which 0 are hydrogens and 0 are deuteriums.

In the tables below, the AltConf column contains the number of residues with at least one atom in alternate conformation and the Trace column contains the number of residues modelled with at most 2 atoms.

- Molecule 1 is a RNA chain called 23S ribosomal RNA.

Mol	Chain	Residues	Atoms					AltConf	Trace
1	I	2897	Total	C	N	O	P	0	0
			62206	27757	11443	20109	2897		

- Molecule 2 is a RNA chain called 5S ribosomal RNA.

Mol	Chain	Residues	Atoms					AltConf	Trace
2	J	118	Total	C	N	O	P	0	0
			2529	1126	464	821	118		

- Molecule 3 is a protein called 50S ribosomal protein L2.

Mol	Chain	Residues	Atoms					AltConf	Trace
3	K	270	Total	C	N	O	S	0	0
			2076	1283	422	364	7		

- Molecule 4 is a protein called 50S ribosomal protein L15.

Mol	Chain	Residues	Atoms					AltConf	Trace
4	L	144	Total	C	N	O	S	0	0
			1053	654	207	190	2		

- Molecule 5 is a protein called 50S ribosomal protein L4.

Mol	Chain	Residues	Atoms					AltConf	Trace
5	M	201	Total	C	N	O	S	0	0
			1552	974	283	290	5		

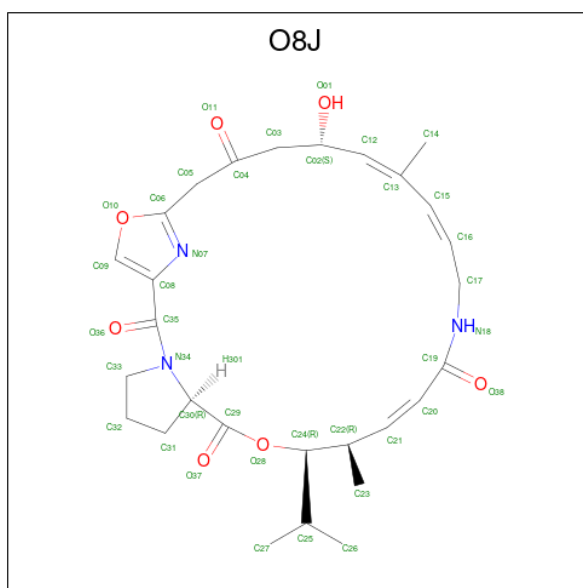
- Molecule 6 is a protein called 50S ribosomal protein L3.

Mol	Chain	Residues	Atoms					AltConf	Trace
6	N	206	Total	C	N	O	S	0	0
			1542	965	284	289	4		

- Molecule 7 is a protein called 50S ribosomal protein L13.

Mol	Chain	Residues	Atoms					AltConf	Trace
			Total	C	N	O	S		
7	O	142	1129	714	212	199	4	0	0

- Molecule 8 is (3R,4R,5E,10E,12E,14S,26aR)-14-hydroxy-4,12-dimethyl-3-(propan-2-yl)-8,9,14,15,24,25,26,26a-octahydro-1H,3H,22H-21,18-(azeno)pyrrolo[2,1-c][1,8,4,19]dioxadiazacyclotetracosine-1,7,16,22(4H,17H)-tetrone (three-letter code: O8J) (formula: C<sub>28</sub>H<sub>37</sub>N<sub>3</sub>O<sub>7</sub>) (labeled as "Ligand of Interest" by depositor).

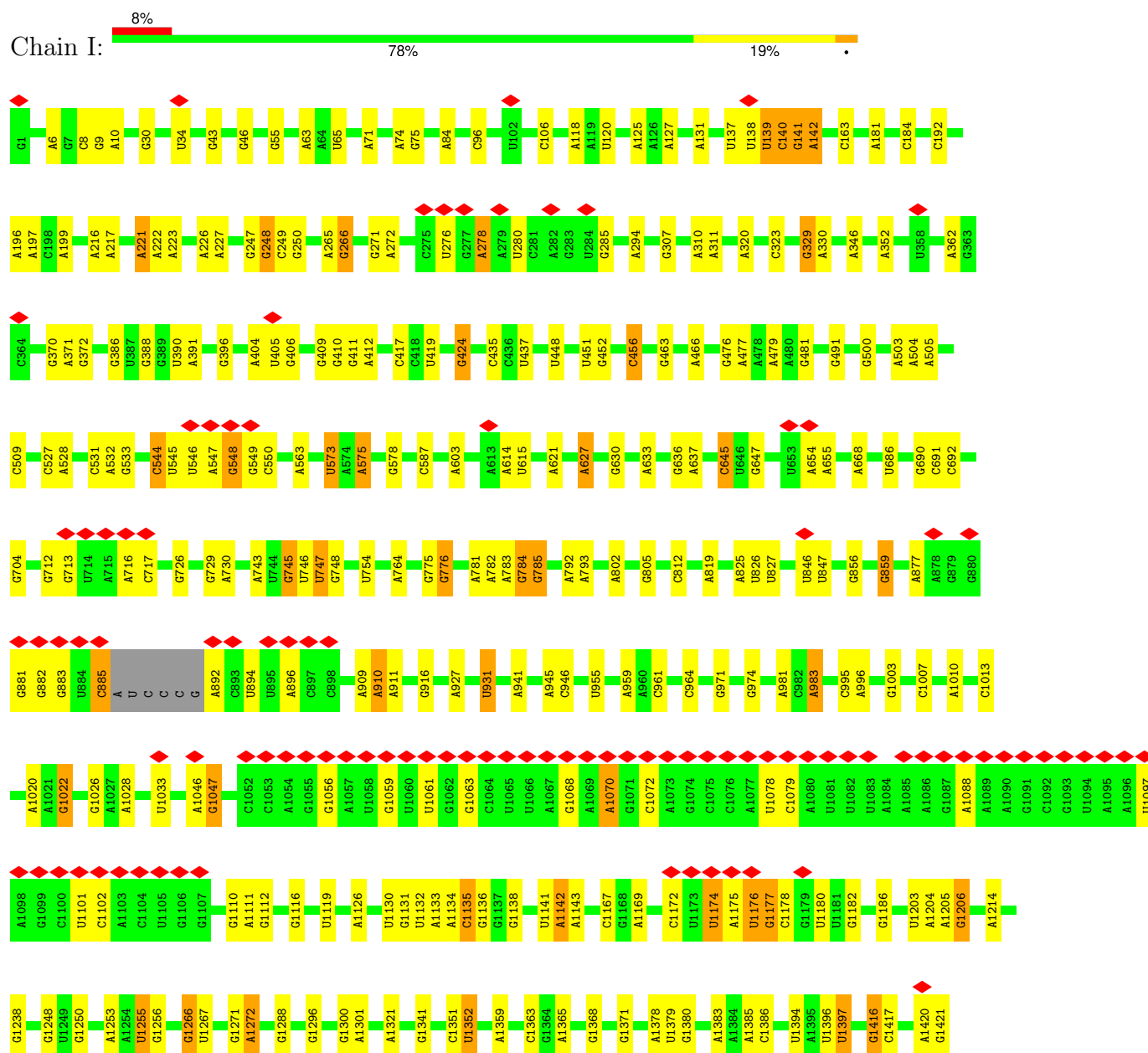


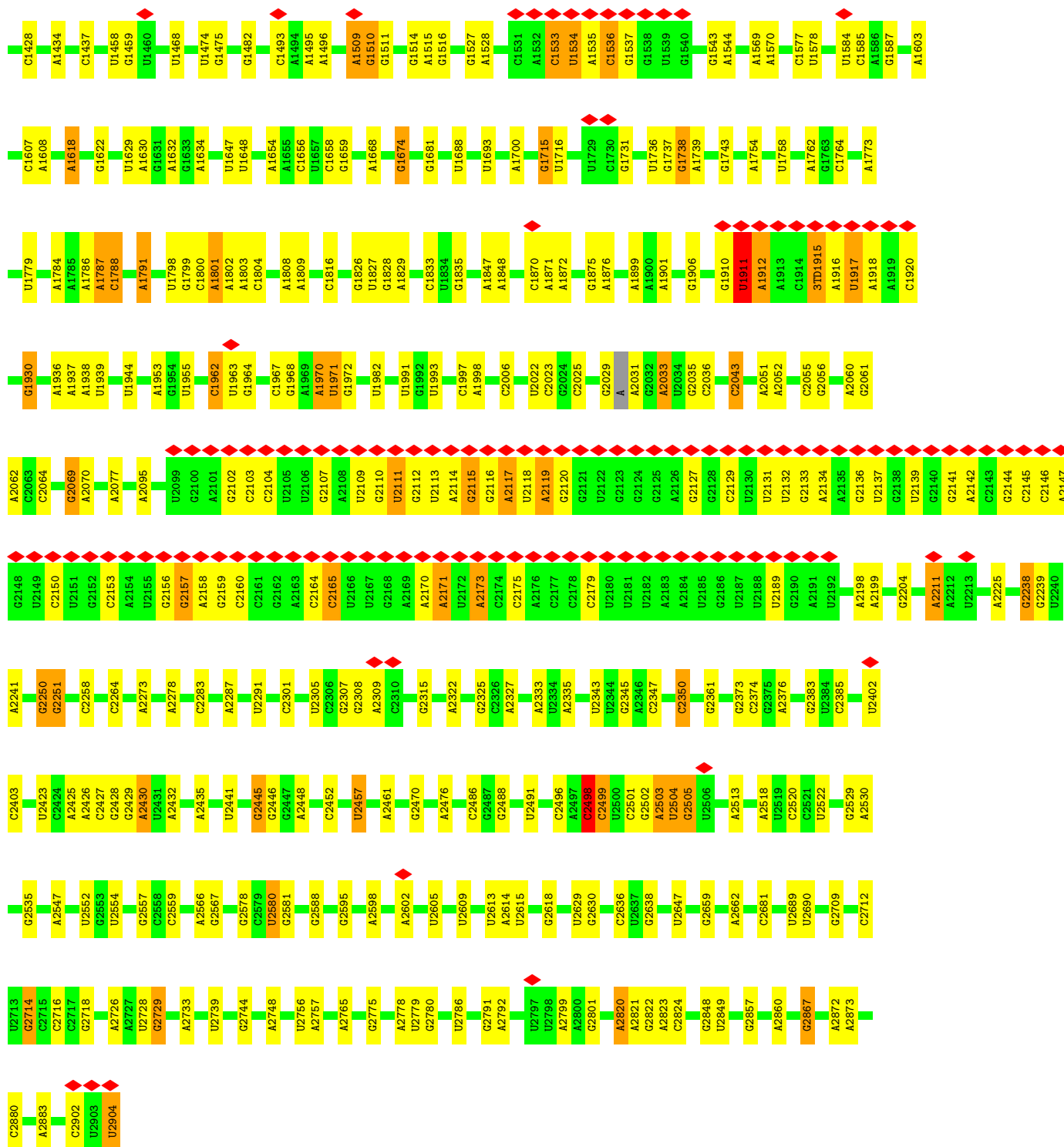
Mol	Chain	Residues	Atoms				AltConf
			Total	C	N	O	
8	I	1	38	28	3	7	0

### 3 Residue-property plots

These plots are drawn for all protein, RNA, DNA and oligosaccharide chains in the entry. The first graphic for a chain summarises the proportions of the various outlier classes displayed in the second graphic. The second graphic shows the sequence view annotated by issues in geometry and atom inclusion in map density. Residues are color-coded according to the number of geometric quality criteria for which they contain at least one outlier: green = 0, yellow = 1, orange = 2 and red = 3 or more. A red diamond above a residue indicates a poor fit to the EM map for this residue (all-atom inclusion < 40%). Stretches of 2 or more consecutive residues without any outlier are shown as a green connector. Residues present in the sample, but not in the model, are shown in grey.

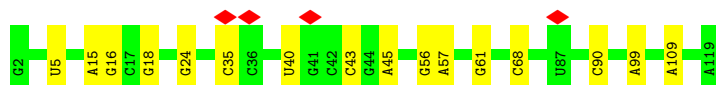
#### • Molecule 1: 23S ribosomal RNA



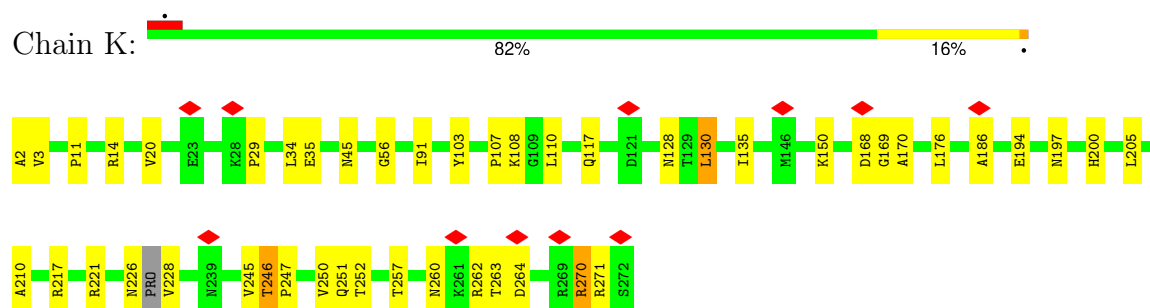


• Molecule 2: 5S ribosomal RNA

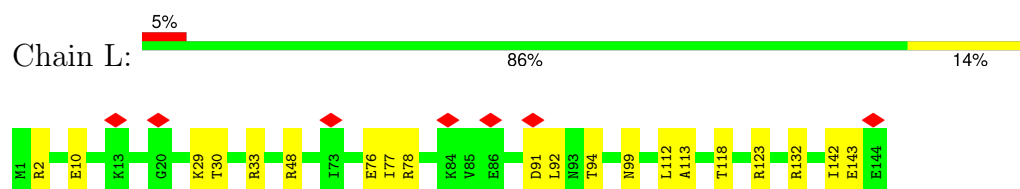
Chain J: 86% 14%



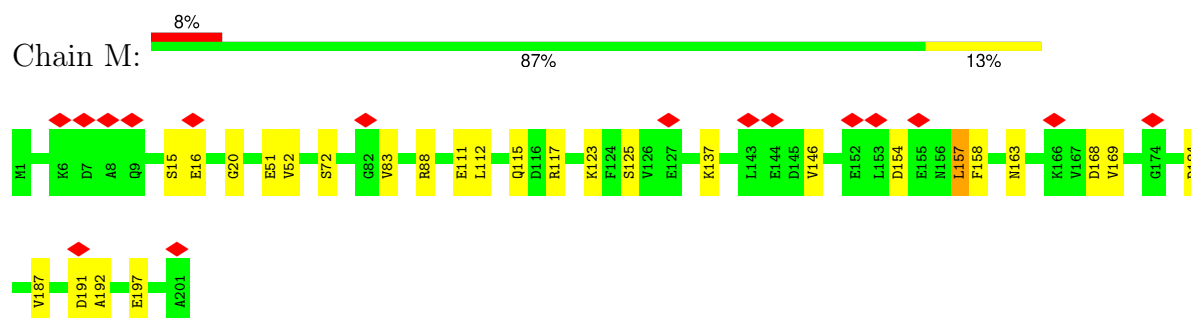
- Molecule 3: 50S ribosomal protein L2



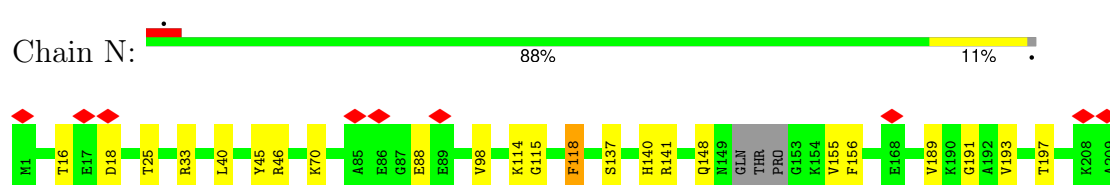
- Molecule 4: 50S ribosomal protein L15



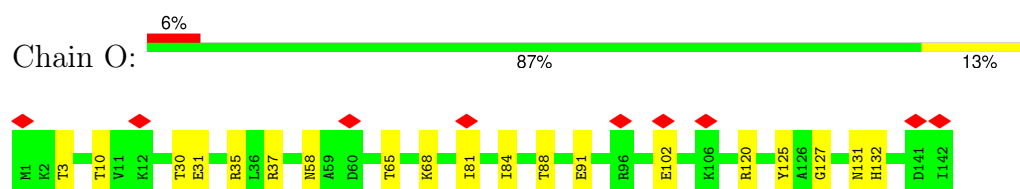
- Molecule 5: 50S ribosomal protein L4



- Molecule 6: 50S ribosomal protein L3



- Molecule 7: 50S ribosomal protein L13



## 4 Experimental information

Property	Value	Source
EM reconstruction method	SINGLE PARTICLE	Depositor
Imposed symmetry	POINT, C1	Depositor
Number of particles used	31630	Depositor
Resolution determination method	FSC 0.143 CUT-OFF	Depositor
CTF correction method	PHASE FLIPPING AND AMPLITUDE CORRECTION	Depositor
Microscope	FEI TITAN KRIOS	Depositor
Voltage (kV)	300	Depositor
Electron dose ( $e^-/\text{\AA}^2$ )	71.2	Depositor
Minimum defocus (nm)	Not provided	
Maximum defocus (nm)	Not provided	
Magnification	Not provided	
Image detector	GATAN K2 SUMMIT (4k x 4k)	Depositor
Maximum map value	32.043	Depositor
Minimum map value	-16.910	Depositor
Average map value	-0.018	Depositor
Map value standard deviation	1.268	Depositor
Recommended contour level	6	Depositor
Map size (Å)	496.98, 496.98, 496.98	wwPDB
Map dimensions	600, 600, 600	wwPDB
Map angles (°)	90.0, 90.0, 90.0	wwPDB
Pixel spacing (Å)	0.8283, 0.8283, 0.8283	Depositor



## 5 Model quality

### 5.1 Standard geometry

Bond lengths and bond angles in the following residue types are not validated in this section: OMC, 6MZ, OMU, 5MC, 2MA, OMG, G7M, 5MU, 3TD, PSU, 2MG, 1MG, O8J

The Z score for a bond length (or angle) is the number of standard deviations the observed value is removed from the expected value. A bond length (or angle) with  $|Z| > 5$  is considered an outlier worth inspection. RMSZ is the root-mean-square of all Z scores of the bond lengths (or angles).

Mol	Chain	Bond lengths		Bond angles	
		RMSZ	# $ Z  > 5$	RMSZ	# $ Z  > 5$
1	I	0.26	0/69165	0.67	0/107896
2	J	0.21	0/2828	0.66	0/4410
3	K	0.27	0/2113	0.46	0/2837
4	L	0.27	0/1062	0.48	0/1413
5	M	0.26	0/1571	0.41	0/2113
6	N	0.27	0/1561	0.46	0/2097
7	O	0.28	0/1152	0.42	0/1551
All	All	0.26	0/79452	0.66	0/122317

There are no bond length outliers.

There are no bond angle outliers.

There are no chirality outliers.

There are no planarity outliers.

### 5.2 Too-close contacts

In the following table, the Non-H and H(model) columns list the number of non-hydrogen atoms and hydrogen atoms in the chain respectively. The H(added) column lists the number of hydrogen atoms added and optimized by MolProbity. The Clashes column lists the number of clashes within the asymmetric unit, whereas Symm-Clashes lists symmetry-related clashes.

Mol	Chain	Non-H	H(model)	H(added)	Clashes	Symm-Clashes
1	I	62206	0	31305	223	0
2	J	2529	0	1281	4	0
3	K	2076	0	2146	40	0
4	L	1053	0	1129	12	0
5	M	1552	0	1618	16	0
6	N	1542	0	1593	19	0

*Continued on next page...*

*Continued from previous page...*

Mol	Chain	Non-H	H(model)	H(added)	Clashes	Symm-Clashes
7	O	1129	0	1162	17	0
8	I	38	0	0	1	0
All	All	72125	0	40234	288	0

The all-atom clashscore is defined as the number of clashes found per 1000 atoms (including hydrogen atoms). The all-atom clashscore for this structure is 3.

All (288) close contacts within the same asymmetric unit are listed below, sorted by their clash magnitude.

Atom-1	Atom-2	Interatomic distance (Å)	Clash overlap (Å)
1:I:1779:U:OP2	1:I:1784:A:N6	2.05	0.89
1:I:1799:G:OP2	3:K:270:ARG:NH1	2.07	0.88
3:K:2:ALA:N	3:K:20:VAL:O	2.09	0.85
1:I:1607:C:N4	1:I:1622:G:OP2	2.11	0.84
1:I:1656:C:OP1	6:N:141:ARG:NH1	2.11	0.84
1:I:1022:G:O6	7:O:68:LYS:NZ	2.12	0.83
1:I:621:A:OP2	4:L:99:ASN:ND2	2.11	0.83
1:I:2799:A:O2'	1:I:2801:G:OP2	1.98	0.82
5:M:125:SER:O	5:M:137:LYS:NZ	2.13	0.82
1:I:1911:PSU:O2'	1:I:1912:A:OP1	1.98	0.81
1:I:1715:G:O2'	1:I:1743:G:O6	1.99	0.81
1:I:1826:G:O2'	1:I:1971:U:OP2	2.00	0.80
1:I:1061:U:O2'	1:I:1063:G:OP2	2.01	0.78
1:I:65:U:O2'	1:I:456:C:N3	2.17	0.78
5:M:111:GLU:OE1	5:M:115:GLN:NE2	2.17	0.77
1:I:1475:G:O2'	1:I:1514:G:O6	2.02	0.76
1:I:1798:U:O2'	1:I:1802:A:N3	2.17	0.76
1:I:2291:U:O2'	1:I:2374:C:O2	2.03	0.76
7:O:88:THR:OG1	7:O:91:GLU:OE1	2.05	0.75
1:I:1176:U:O2'	1:I:1177:G:O4'	2.05	0.75
2:J:16:G:O6	2:J:68:C:N4	2.18	0.74
1:I:745:1MG:O2'	1:I:748:G:O2'	2.06	0.73
1:I:1420:A:O2'	1:I:2211:A:N7	2.22	0.73
1:I:1936:A:OP2	1:I:1962:5MC:N4	2.22	0.73
6:N:16:THR:OG1	6:N:18:ASP:OD1	2.05	0.73
1:I:1174:U:OP1	1:I:1177:G:N2	2.21	0.73
1:I:137:U:O2'	1:I:140:C:N4	2.21	0.72
1:I:2595:G:N2	1:I:2598:A:OP2	2.20	0.72
1:I:1798:U:OP2	3:K:271:ARG:NH2	2.24	0.71
1:I:500:G:N1	1:I:503:A:OP2	2.23	0.70
1:I:745:1MG:HO2'	1:I:748:G:HO2'	1.39	0.70

*Continued on next page...*

*Continued from previous page...*

Atom-1	Atom-2	Interatomic distance (Å)	Clash overlap (Å)
1:I:776:G:N7	1:I:793:A:O2'	2.24	0.70
1:I:2116:G:N7	1:I:2165:C:N4	2.39	0.70
1:I:2638:G:O2'	1:I:2775:G:N2	2.25	0.69
1:I:2780:G:N1	7:O:102:GLU:OE1	2.26	0.69
1:I:1788:C:OP2	3:K:221:ARG:NH1	2.25	0.68
1:I:2258:C:O2'	1:I:2427:C:OP2	2.10	0.68
1:I:2902:C:OP2	1:I:2904:U:O3'	2.11	0.68
1:I:2343:U:HO2'	1:I:2373:G:HO2'	1.42	0.68
1:I:1385:A:O2'	1:I:1396:U:O2	2.12	0.67
5:M:51:GLU:OE2	5:M:88:ARG:NH1	2.27	0.67
1:I:578:G:OP1	1:I:1255:U:O2'	2.11	0.67
1:I:2848:G:O2'	1:I:2867:G:N2	2.25	0.67
1:I:1437:C:HO2'	1:I:1516:G:HO2'	1.41	0.67
1:I:1804:C:OP1	3:K:257:THR:OG1	2.13	0.66
1:I:743:A:O2'	1:I:1659:G:OP1	2.14	0.65
1:I:391:A:O2'	1:I:410:G:OP1	2.07	0.65
1:I:573:U:N3	1:I:2031:A:OP1	2.30	0.65
1:I:627:A:O2'	4:L:76:GLU:OE2	2.11	0.65
1:I:995:C:O2	7:O:3:THR:OG1	2.13	0.65
1:I:1654:A:O2'	6:N:118:PHE:O	2.14	0.65
1:I:2114:A:N1	1:I:2170:A:N6	2.44	0.64
1:I:1787:A:O2'	1:I:1788:C:OP1	2.14	0.64
1:I:55:G:O2'	1:I:127:A:N1	2.22	0.63
1:I:1668:A:O2'	1:I:1674:G:N7	2.31	0.63
4:L:78:ARG:NH2	4:L:113:ALA:O	2.32	0.63
1:I:248:G:O2'	1:I:2432:A:OP1	2.15	0.63
1:I:247:G:OP2	1:I:249:C:N4	2.30	0.62
3:K:246:THR:HG23	3:K:252:THR:CG2	2.29	0.62
1:I:1020:A:N1	1:I:1141:U:O2'	2.22	0.62
1:I:2580:PSU:OP1	6:N:137:SER:OG	2.08	0.62
1:I:2618:G:H21	6:N:155:VAL:HG21	1.62	0.62
1:I:323:C:O2'	1:I:1205:A:N6	2.33	0.61
1:I:1363:C:O2'	1:I:1809:A:N3	2.31	0.61
1:I:2503:2MA:O2'	1:I:2505:G:OP2	2.19	0.61
1:I:1911:PSU:O3'	1:I:1918:A:N6	2.23	0.61
1:I:1378:A:O2'	1:I:1380:G:OP2	2.18	0.61
1:I:1871:A:O2'	1:I:1872:A:N7	2.26	0.61
1:I:1912:A:OP2	1:I:1915:3TD:H3'	1.99	0.61
1:I:2530:A:OP2	1:I:2535:G:N2	2.33	0.61
3:K:226:ASN:O	3:K:228:VAL:N	2.34	0.61
1:I:276:U:O2'	1:I:278:A:N7	2.34	0.60

*Continued on next page...*

*Continued from previous page...*

Atom-1	Atom-2	Interatomic distance (Å)	Clash overlap (Å)
1:I:2111:U:O2'	1:I:2113:U:OP2	2.10	0.60
1:I:881:G:N2	1:I:882:G:O6	2.35	0.60
1:I:476:G:N1	1:I:479:A:OP2	2.32	0.60
2:J:40:U:O2'	2:J:43:C:OP2	2.14	0.60
1:I:2064:C:O2'	1:I:2251:OMG:N2	2.34	0.59
1:I:184:C:O2'	1:I:217:A:N3	2.35	0.59
1:I:1421:G:N2	1:I:1495:A:N1	2.50	0.59
1:I:1135:C:N4	1:I:1138:G:N7	2.50	0.59
1:I:2857:G:N2	1:I:2860:A:OP2	2.30	0.59
3:K:246:THR:HG22	3:K:247:PRO:HD2	1.83	0.59
7:O:125:TYR:HH	7:O:132:HIS:CD2	2.21	0.59
1:I:1801:A:OP2	3:K:150:LYS:NZ	2.36	0.58
1:I:1910:G:N2	1:I:1911:PSU:O2	2.37	0.58
3:K:246:THR:HG23	3:K:252:THR:HG21	1.85	0.58
1:I:630:G:N2	1:I:633:A:OP2	2.29	0.58
1:I:141:G:O2'	1:I:142:A:OP2	2.21	0.58
3:K:246:THR:N	3:K:250:VAL:O	2.30	0.57
1:I:1944:U:O4	1:I:2557:G:N2	2.37	0.57
7:O:125:TYR:OH	7:O:132:HIS:NE2	2.31	0.57
1:I:307:G:N1	1:I:310:A:OP2	2.37	0.57
1:I:106:C:O2	1:I:294:A:O2'	2.21	0.56
1:I:409:G:N2	1:I:419:U:O2	2.38	0.56
1:I:1047:G:HO2'	1:I:1110:G:H1	1.52	0.56
1:I:1496:A:N3	1:I:1577:C:O2'	2.32	0.56
1:I:1629:U:O4	1:I:1630:A:N6	2.40	0.55
3:K:263:THR:OG1	3:K:264:ASP:N	2.40	0.55
1:I:754:U:O2'	1:I:1272:A:N1	2.37	0.54
1:I:1754:A:N1	1:I:2716:C:O2'	2.36	0.54
1:I:221:A:N1	1:I:265:A:O2'	2.39	0.54
3:K:168:ASP:OD1	3:K:169:GLY:N	2.41	0.54
1:I:713:G:N2	1:I:717:C:OP2	2.41	0.54
1:I:1916:A:OP2	1:I:1917:PSU:N1	2.40	0.54
1:I:1527:G:N1	1:I:1544:A:OP2	2.38	0.54
1:I:1786:A:O2'	1:I:1938:A:N6	2.39	0.54
1:I:1296:G:OP1	1:I:2709:G:O2'	2.20	0.54
4:L:2:ARG:NH2	5:M:184:ASP:OD1	2.39	0.54
1:I:247:G:O2'	1:I:250:G:O6	2.27	0.53
1:I:1288:G:N2	1:I:1288:G:OP2	2.37	0.53
1:I:2109:U:O4	1:I:2179:C:N4	2.40	0.53
3:K:108:LYS:N	3:K:194:GLU:O	2.41	0.53
1:I:1341:G:OP1	1:I:1397:U:N3	2.39	0.53

*Continued on next page...*

*Continued from previous page...*

Atom-1	Atom-2	Interatomic distance (Å)	Clash overlap (Å)
1:I:1911:PSU:HO2'	1:I:1912:A:P	2.29	0.53
1:I:729:G:N2	3:K:11:PRO:O	2.42	0.52
1:I:2820:A:N6	6:N:197:THR:O	2.42	0.52
5:M:15:SER:N	5:M:197:GLU:OE2	2.42	0.52
1:I:2006:C:O2'	1:I:2823:A:N3	2.42	0.52
1:I:2052:A:O2'	6:N:148:GLN:O	2.18	0.52
1:I:690:G:O3'	3:K:217:ARG:NH1	2.43	0.52
1:I:2822:G:O2'	1:I:2824:C:OP2	2.19	0.52
1:I:452:G:OP1	5:M:52:VAL:HG13	2.10	0.52
1:I:2581:G:OP2	1:I:2581:G:N2	2.41	0.52
1:I:1026:G:OP2	1:I:1134:A:O2'	2.17	0.51
1:I:2029:G:N1	1:I:2033:A:OP2	2.36	0.51
1:I:2522:U:O2'	1:I:2647:U:OP1	2.22	0.51
1:I:2681:C:OP2	6:N:114:LYS:NZ	2.34	0.51
4:L:132:ARG:HG3	4:L:142:ILE:HD12	1.92	0.51
1:I:1176:U:O2'	1:I:1177:G:O5'	2.28	0.51
1:I:2077:A:OP1	1:I:2238:G:N2	2.35	0.51
1:I:1911:PSU:O2'	1:I:1912:A:P	2.69	0.51
1:I:1205:A:O2'	1:I:1206:G:OP1	2.28	0.51
6:N:40:LEU:H	6:N:40:LEU:HD12	1.76	0.51
1:I:1536:C:O4'	1:I:1537:G:N2	2.45	0.50
3:K:170:ALA:O	3:K:186:ALA:N	2.36	0.50
4:L:91:ASP:OD1	4:L:92:LEU:N	2.43	0.50
1:I:587:C:O2	4:L:33:ARG:NH2	2.45	0.50
1:I:627:A:N6	4:L:112:LEU:O	2.38	0.50
1:I:910:A:N3	1:I:2264:C:O2'	2.34	0.50
1:I:1998:A:OP2	6:N:141:ARG:NH2	2.44	0.50
1:I:2171:A:O2'	1:I:2173:A:OP1	2.29	0.50
1:I:1141:U:OP2	7:O:65:THR:OG1	2.27	0.50
3:K:117:GLN:N	3:K:128:ASN:OD1	2.38	0.49
3:K:3:VAL:O	3:K:3:VAL:HG13	2.11	0.49
1:I:2780:G:OP2	7:O:120:ARG:NE	2.45	0.49
1:I:776:G:O2'	1:I:2241:A:OP1	2.30	0.49
1:I:1715:G:O2'	1:I:1716:U:OP2	2.29	0.49
1:I:2250:G:O2'	1:I:2496:C:OP1	2.31	0.49
1:I:2659:G:N2	1:I:2662:A:OP2	2.40	0.49
1:I:463:G:N2	1:I:466:A:OP2	2.39	0.49
1:I:636:G:N2	4:L:76:GLU:OE1	2.40	0.48
7:O:81:ILE:H	7:O:81:ILE:HD12	1.76	0.48
5:M:112:LEU:O	5:M:117:ARG:N	2.46	0.48
5:M:191:ASP:OD1	5:M:192:ALA:N	2.46	0.48

*Continued on next page...*

*Continued from previous page...*

Atom-1	Atom-2	Interatomic distance (Å)	Clash overlap (Å)
1:I:388:G:O6	1:I:390:U:O2'	2.11	0.48
1:I:544:C:N4	1:I:548:G:OP2	2.46	0.48
5:M:16:GLU:O	5:M:20:GLY:N	2.45	0.48
1:I:1417:C:O2'	1:I:1587:G:O2'	2.31	0.48
1:I:2141:G:HO2'	1:I:2142:A:H8	1.61	0.48
1:I:192:C:O2'	1:I:802:A:N3	2.42	0.48
1:I:754:U:C1'	1:I:1618:6MZ:H2	2.44	0.48
1:I:1930:G:O2'	1:I:1968:G:O6	2.16	0.48
3:K:197:ASN:O	3:K:200:HIS:N	2.38	0.48
1:I:2033:A:HO2'	1:I:2035:G:P	2.37	0.48
1:I:226:A:N6	1:I:227:A:N1	2.62	0.47
1:I:1693:U:O2'	3:K:14:ARG:NH2	2.44	0.47
5:M:168:ASP:OD1	5:M:169:VAL:N	2.47	0.47
6:N:25:THR:HG21	6:N:193:VAL:HG22	1.96	0.47
1:I:1028:A:OP2	1:I:1126:A:N6	2.41	0.47
1:I:784:G:O4'	3:K:226:ASN:ND2	2.48	0.47
1:I:1791:A:N6	1:I:1828:G:O2'	2.47	0.47
1:I:1266:G:O2'	1:I:1267:U:OP2	2.31	0.47
1:I:885:C:HO3'	1:I:892:A:H8	1.60	0.47
1:I:2446:G:N7	1:I:2501:C:O2'	2.48	0.46
1:I:221:A:O2'	1:I:266:G:N7	2.35	0.46
1:I:1130:U:N3	1:I:2025:C:OP1	2.41	0.46
3:K:107:PRO:HD2	3:K:110:LEU:HD22	1.96	0.46
1:I:1787:A:HO2'	1:I:1788:C:P	2.36	0.46
1:I:278:A:N6	1:I:362:A:N7	2.64	0.46
3:K:250:VAL:HG12	3:K:251:GLN:H	1.80	0.46
1:I:30:G:O2'	1:I:1214:A:N3	2.42	0.46
1:I:981:A:O2'	1:I:2036:C:O2'	2.32	0.46
1:I:1007:C:OP1	7:O:37:ARG:NH2	2.48	0.46
1:I:1359:A:OP2	1:I:1371:G:N1	2.43	0.46
1:I:1827:U:O2'	1:I:1970:A:N3	2.40	0.46
6:N:25:THR:OG1	6:N:191:GLY:O	2.28	0.46
1:I:2904:U:O3'	1:I:2904:U:OP1	2.30	0.45
3:K:35:GLU:OE1	3:K:35:GLU:HA	2.16	0.45
1:I:645:C:H42	1:I:2350:C:H1'	1.81	0.45
1:I:1738:G:HO2'	1:I:1739:A:H8	1.63	0.45
1:I:1962:5MC:O2'	1:I:1964:G:OP2	2.30	0.45
1:I:197:A:N6	1:I:2430:A:O2'	2.50	0.45
1:I:691:C:OP1	3:K:217:ARG:NH1	2.49	0.45
1:I:1658:C:OP1	6:N:140:HIS:NE2	2.46	0.45
1:I:1787:A:O2'	1:I:1788:C:P	2.74	0.45

*Continued on next page...*

*Continued from previous page...*

Atom-1	Atom-2	Interatomic distance (Å)	Clash overlap (Å)
2:J:5:U:OP1	2:J:61:G:O2'	2.33	0.45
6:N:156:PHE:HB3	7:O:81:ILE:HD11	1.98	0.45
1:I:2728:U:HO2'	1:I:2729:G:H8	1.65	0.44
1:I:2712:C:OP1	1:I:2714:G:O2'	2.35	0.44
1:I:6:A:O2'	7:O:132:HIS:ND1	2.47	0.44
1:I:1693:U:O2	3:K:14:ARG:NH2	2.50	0.44
7:O:31:GLU:OE2	7:O:35:ARG:NH1	2.50	0.44
1:I:2430:A:N3	1:I:2430:A:H2'	2.32	0.44
1:I:2134:A:H62	1:I:2157:G:H2'	1.83	0.44
3:K:91:ILE:HD12	3:K:103:TYR:CD1	2.52	0.44
1:I:959:A:N3	1:I:2457:PSU:O2'	2.48	0.44
1:I:1028:A:N3	1:I:2486:C:O2'	2.36	0.44
3:K:260:ASN:OD1	3:K:262:ARG:N	2.47	0.43
1:I:141:G:O2'	1:I:142:A:P	2.76	0.43
1:I:141:G:O2'	1:I:142:A:O4'	2.36	0.43
1:I:1509:A:O2'	1:I:1510:G:OP2	2.27	0.43
1:I:784:G:H5'	1:I:785:G:OP1	2.18	0.43
7:O:131:ASN:OD1	7:O:131:ASN:N	2.50	0.43
3:K:29:PRO:HG2	3:K:34:LEU:HD11	2.01	0.43
3:K:205:LEU:HB3	3:K:210:ALA:HB3	1.99	0.43
1:I:704:G:O2'	1:I:726:G:N2	2.50	0.43
1:I:2498:OMC:H2'	1:I:2499:C:H5'	2.01	0.43
1:I:575:A:OP2	1:I:2499:C:O2'	2.35	0.43
3:K:246:THR:OG1	3:K:250:VAL:O	2.37	0.43
4:L:29:LYS:C	4:L:30:THR:HG23	2.39	0.43
7:O:10:THR:HG22	7:O:10:THR:O	2.19	0.43
1:I:1003:G:O2'	1:I:1010:A:N1	2.42	0.43
5:M:157:LEU:HD23	5:M:158:PHE:H	1.84	0.43
1:I:704:G:O2'	1:I:726:G:N1	2.47	0.42
3:K:45:ASN:OD1	3:K:45:ASN:N	2.53	0.42
1:I:320:A:N3	5:M:163:ASN:ND2	2.58	0.42
1:I:528:A:C2	1:I:2043:C:H4'	2.55	0.42
1:I:971:G:O2'	1:I:983:A:N3	2.50	0.42
1:I:1141:U:H4'	1:I:1142:A:O4'	2.19	0.42
1:I:1936:A:N6	1:I:1963:U:O2	2.52	0.42
1:I:2636:C:O2'	6:N:45:TYR:OH	2.35	0.42
3:K:176:LEU:N	3:K:176:LEU:HD12	2.34	0.42
1:I:692:C:OP1	3:K:56:GLY:N	2.42	0.42
1:I:909:A:O2'	1:I:911:A:OP2	2.23	0.42
1:I:1101:U:O2'	1:I:1102:C:O4'	2.37	0.42
1:I:1474:U:O4	1:I:1475:G:N1	2.53	0.42

*Continued on next page...*

*Continued from previous page...*

Atom-1	Atom-2	Interatomic distance (Å)	Clash overlap (Å)
1:I:2503:2MA:H8	8:I:3001:O8J:C15	2.50	0.42
1:I:410:G:H1	1:I:417:C:H42	1.68	0.42
1:I:931:U:N3	1:I:1167:C:O2	2.51	0.42
1:I:1380:G:N2	1:I:1570:A:N1	2.68	0.42
3:K:246:THR:HG23	3:K:252:THR:HG22	2.01	0.42
1:I:825:A:H2'	1:I:826:U:O4'	2.20	0.42
1:I:2033:A:O2'	1:I:2035:G:OP2	2.34	0.42
1:I:2119:A:O2'	1:I:2120:G:H4'	2.20	0.42
1:I:8:C:H2'	1:I:9:G:O4'	2.20	0.42
1:I:1248:G:N2	5:M:83:VAL:HG22	2.35	0.42
1:I:781:A:OP1	3:K:217:ARG:NH2	2.52	0.42
1:I:2051:A:O2'	1:I:2614:A:N6	2.53	0.42
1:I:2821:A:OP2	6:N:115:GLY:N	2.39	0.42
5:M:154:ASP:HB3	5:M:157:LEU:HD22	2.02	0.42
1:I:139:U:O2'	1:I:140:C:OP1	2.38	0.41
5:M:157:LEU:HD23	5:M:158:PHE:N	2.34	0.41
6:N:46:ARG:NH2	6:N:88:GLU:O	2.53	0.41
1:I:1101:U:HO2'	1:I:1102:C:H6	1.65	0.41
1:I:1203:U:OP2	1:I:1204:A:O2'	2.28	0.41
1:I:2461:A:N6	1:I:2488:G:O6	2.54	0.41
7:O:58:ASN:N	7:O:127:GLY:O	2.46	0.41
1:I:1351:C:H2'	1:I:1352:U:O4'	2.20	0.41
1:I:1533:C:O2'	1:I:1534:U:OP1	2.35	0.41
3:K:251:GLN:O	3:K:252:THR:OG1	2.21	0.41
1:I:1688:U:O2'	1:I:1700:A:N7	2.48	0.41
1:I:1416:G:O2'	1:I:1417:C:OP2	2.30	0.41
1:I:745:1MG:HN21	1:I:745:1MG:HM11	1.73	0.41
1:I:2144:G:N2	1:I:2146:C:O3'	2.54	0.41
1:I:881:G:N1	1:I:883:G:O6	2.52	0.41
1:I:1068:G:O2'	1:I:1070:A:N6	2.54	0.41
1:I:1394:U:H4'	1:I:1603:A:H4'	2.03	0.41
1:I:1736:U:H2'	1:I:1737:G:O4'	2.21	0.41
1:I:2115:G:H21	1:I:2117:A:H5''	1.86	0.41
5:M:146:VAL:HG21	5:M:187:VAL:HG23	2.02	0.41
7:O:84:ILE:HG23	7:O:84:ILE:O	2.20	0.41
1:I:2301:C:H42	1:I:2315:G:H1	1.68	0.41
3:K:130:LEU:HB2	3:K:135:ILE:HD11	2.03	0.41
1:I:1681:G:O2'	1:I:1762:A:N3	2.40	0.40
1:I:1953:A:O2'	1:I:2559:C:O2	2.35	0.40
6:N:98:VAL:HG22	6:N:98:VAL:O	2.21	0.40
1:I:859:G:O2'	1:I:916:G:O6	2.27	0.40

*Continued on next page...*



Continued from previous page...

Atom-1	Atom-2	Interatomic distance (Å)	Clash overlap (Å)
1:I:1803:A:O2'	3:K:257:THR:HG21	2.21	0.40
4:L:123:ARG:NH2	4:L:143:GLU:OE2	2.46	0.40
1:I:329:G:O4'	1:I:477:A:H1'	2.22	0.40
1:I:370:G:O2'	1:I:424:G:OP1	2.36	0.40
1:I:964:C:O2'	1:I:2273:A:N3	2.34	0.40
1:I:2756:U:H4'	1:I:2757:A:OP1	2.21	0.40
1:I:1528:A:OP2	1:I:1543:G:N2	2.50	0.40
1:I:2786:U:OP1	6:N:70:LYS:NZ	2.51	0.40
1:I:1510:G:H2'	1:I:1511:G:O4'	2.21	0.40
2:J:24:G:N7	2:J:56:G:O2'	2.30	0.40
4:L:77:ILE:HG22	4:L:78:ARG:N	2.37	0.40

There are no symmetry-related clashes.

## 5.3 Torsion angles [i](#)

### 5.3.1 Protein backbone [i](#)

In the following table, the Percentiles column shows the percent Ramachandran outliers of the chain as a percentile score with respect to all PDB entries followed by that with respect to all EM entries.

The Analysed column shows the number of residues for which the backbone conformation was analysed, and the total number of residues.

Mol	Chain	Analysed	Favoured	Allowed	Outliers	Percentiles	
3	K	266/271 (98%)	234 (88%)	32 (12%)	0	100	100
4	L	142/144 (99%)	128 (90%)	14 (10%)	0	100	100
5	M	199/201 (99%)	192 (96%)	7 (4%)	0	100	100
6	N	202/209 (97%)	193 (96%)	9 (4%)	0	100	100
7	O	140/142 (99%)	137 (98%)	3 (2%)	0	100	100
All	All	949/967 (98%)	884 (93%)	65 (7%)	0	100	100

There are no Ramachandran outliers to report.

### 5.3.2 Protein sidechains [i](#)

In the following table, the Percentiles column shows the percent sidechain outliers of the chain as a percentile score with respect to all PDB entries followed by that with respect to all EM

entries.

The Analysed column shows the number of residues for which the sidechain conformation was analysed, and the total number of residues.

Mol	Chain	Analysed	Rotameric	Outliers	Percentiles	
3	K	215/216 (100%)	211 (98%)	4 (2%)	52	75
4	L	103/103 (100%)	99 (96%)	4 (4%)	27	53
5	M	165/165 (100%)	162 (98%)	3 (2%)	54	77
6	N	161/164 (98%)	158 (98%)	3 (2%)	52	75
7	O	116/116 (100%)	115 (99%)	1 (1%)	75	90
All	All	760/764 (100%)	745 (98%)	15 (2%)	50	74

All (15) residues with a non-rotameric sidechain are listed below:

Mol	Chain	Res	Type
3	K	130	LEU
3	K	245	VAL
3	K	246	THR
3	K	270	ARG
4	L	10	GLU
4	L	48	ARG
4	L	94	THR
4	L	118	THR
5	M	72	SER
5	M	123	LYS
5	M	157	LEU
6	N	33	ARG
6	N	118	PHE
6	N	189	VAL
7	O	30	THR

Sometimes sidechains can be flipped to improve hydrogen bonding and reduce clashes. All (8) such sidechains are listed below:

Mol	Chain	Res	Type
3	K	58	HIS
4	L	93	ASN
4	L	99	ASN
4	L	104	GLN
5	M	41	GLN
6	N	58	ASN
7	O	128	ASN

*Continued on next page...*

*Continued from previous page...*

Mol	Chain	Res	Type
7	O	138	GLN

### 5.3.3 RNA ⓘ

Mol	Chain	Analysed	Backbone Outliers	Pucker Outliers
1	I	2891/2904 (99%)	360 (12%)	9 (0%)
2	J	117/118 (99%)	8 (6%)	0
All	All	3008/3022 (99%)	368 (12%)	9 (0%)

All (368) RNA backbone outliers are listed below:

Mol	Chain	Res	Type
1	I	10	A
1	I	34	U
1	I	43	G
1	I	46	G
1	I	63	A
1	I	71	A
1	I	74	A
1	I	75	G
1	I	84	A
1	I	96	C
1	I	118	A
1	I	120	U
1	I	125	A
1	I	131	A
1	I	138	U
1	I	139	U
1	I	140	C
1	I	141	G
1	I	142	A
1	I	163	C
1	I	181	A
1	I	196	A
1	I	199	A
1	I	216	A
1	I	221	A
1	I	222	A
1	I	223	A
1	I	248	G
1	I	266	G

*Continued on next page...*

*Continued from previous page...*

Mol	Chain	Res	Type
1	I	272	A
1	I	278	A
1	I	280	U
1	I	285	G
1	I	311	A
1	I	329	G
1	I	330	A
1	I	346	A
1	I	352	A
1	I	371	A
1	I	372	G
1	I	386	G
1	I	396	G
1	I	405	U
1	I	406	G
1	I	411	G
1	I	412	A
1	I	424	G
1	I	435	C
1	I	437	U
1	I	448	U
1	I	451	U
1	I	456	C
1	I	481	G
1	I	491	G
1	I	504	A
1	I	505	A
1	I	509	C
1	I	527	C
1	I	531	C
1	I	532	A
1	I	533	G
1	I	544	C
1	I	545	U
1	I	546	U
1	I	547	A
1	I	548	G
1	I	549	G
1	I	550	C
1	I	563	A
1	I	573	U
1	I	575	A

*Continued on next page...*

*Continued from previous page...*

Mol	Chain	Res	Type
1	I	603	A
1	I	614	A
1	I	615	U
1	I	627	A
1	I	637	A
1	I	645	C
1	I	647	G
1	I	654	A
1	I	655	A
1	I	668	A
1	I	686	U
1	I	712	G
1	I	716	A
1	I	730	A
1	I	747	5MU
1	I	764	A
1	I	775	G
1	I	776	G
1	I	782	A
1	I	783	A
1	I	784	G
1	I	785	G
1	I	792	A
1	I	805	G
1	I	812	C
1	I	819	A
1	I	827	U
1	I	846	U
1	I	847	U
1	I	856	G
1	I	859	G
1	I	877	A
1	I	885	C
1	I	894	U
1	I	896	A
1	I	910	A
1	I	927	A
1	I	931	U
1	I	941	A
1	I	945	A
1	I	946	C
1	I	961	C

*Continued on next page...*

*Continued from previous page...*

Mol	Chain	Res	Type
1	I	974	G
1	I	983	A
1	I	996	A
1	I	1013	C
1	I	1022	G
1	I	1033	U
1	I	1046	A
1	I	1047	G
1	I	1056	G
1	I	1059	G
1	I	1070	A
1	I	1072	C
1	I	1078	U
1	I	1079	C
1	I	1088	A
1	I	1097	U
1	I	1111	A
1	I	1112	G
1	I	1116	G
1	I	1119	U
1	I	1131	G
1	I	1132	U
1	I	1133	A
1	I	1135	C
1	I	1136	G
1	I	1142	A
1	I	1143	A
1	I	1169	A
1	I	1172	C
1	I	1174	U
1	I	1175	A
1	I	1176	U
1	I	1177	G
1	I	1178	C
1	I	1180	U
1	I	1182	G
1	I	1186	G
1	I	1206	G
1	I	1238	G
1	I	1250	G
1	I	1253	A
1	I	1255	U

*Continued on next page...*

*Continued from previous page...*

Mol	Chain	Res	Type
1	I	1256	G
1	I	1266	G
1	I	1271	G
1	I	1272	A
1	I	1300	G
1	I	1301	A
1	I	1321	A
1	I	1352	U
1	I	1365	A
1	I	1368	G
1	I	1379	U
1	I	1383	A
1	I	1386	C
1	I	1397	U
1	I	1416	G
1	I	1428	C
1	I	1434	A
1	I	1458	U
1	I	1459	G
1	I	1468	U
1	I	1482	G
1	I	1493	C
1	I	1509	A
1	I	1510	G
1	I	1515	A
1	I	1534	U
1	I	1535	A
1	I	1536	C
1	I	1569	A
1	I	1578	U
1	I	1584	U
1	I	1585	C
1	I	1608	A
1	I	1632	A
1	I	1634	A
1	I	1647	U
1	I	1648	U
1	I	1674	G
1	I	1715	G
1	I	1731	G
1	I	1738	G
1	I	1758	U

*Continued on next page...*

*Continued from previous page...*

Mol	Chain	Res	Type
1	I	1764	C
1	I	1773	A
1	I	1788	C
1	I	1791	A
1	I	1800	C
1	I	1801	A
1	I	1808	A
1	I	1816	C
1	I	1829	A
1	I	1833	C
1	I	1847	A
1	I	1848	A
1	I	1870	C
1	I	1876	A
1	I	1899	A
1	I	1901	A
1	I	1906	G
1	I	1912	A
1	I	1920	C
1	I	1930	G
1	I	1937	A
1	I	1955	U
1	I	1967	C
1	I	1970	A
1	I	1971	U
1	I	1972	G
1	I	1982	U
1	I	1991	U
1	I	1993	U
1	I	1997	C
1	I	2022	U
1	I	2023	C
1	I	2033	A
1	I	2043	C
1	I	2055	C
1	I	2056	G
1	I	2060	A
1	I	2061	G
1	I	2062	A
1	I	2069	G7M
1	I	2070	A
1	I	2095	A

*Continued on next page...*



*Continued from previous page...*

Mol	Chain	Res	Type
1	I	2102	G
1	I	2103	C
1	I	2104	C
1	I	2107	G
1	I	2110	G
1	I	2111	U
1	I	2112	G
1	I	2115	G
1	I	2117	A
1	I	2118	U
1	I	2119	A
1	I	2127	G
1	I	2129	C
1	I	2131	U
1	I	2132	U
1	I	2133	G
1	I	2136	G
1	I	2137	U
1	I	2139	U
1	I	2145	C
1	I	2147	A
1	I	2150	C
1	I	2153	C
1	I	2156	G
1	I	2157	G
1	I	2158	A
1	I	2159	G
1	I	2160	C
1	I	2164	C
1	I	2165	C
1	I	2171	A
1	I	2173	A
1	I	2175	C
1	I	2189	U
1	I	2198	A
1	I	2199	A
1	I	2204	G
1	I	2211	A
1	I	2225	A
1	I	2238	G
1	I	2239	G
1	I	2250	G

*Continued on next page...*

*Continued from previous page...*

Mol	Chain	Res	Type
1	I	2278	A
1	I	2283	C
1	I	2287	A
1	I	2305	U
1	I	2307	G
1	I	2308	G
1	I	2309	A
1	I	2322	A
1	I	2325	G
1	I	2327	A
1	I	2333	A
1	I	2335	A
1	I	2345	G
1	I	2347	C
1	I	2350	C
1	I	2361	G
1	I	2376	A
1	I	2383	G
1	I	2385	C
1	I	2402	U
1	I	2403	C
1	I	2423	U
1	I	2425	A
1	I	2426	A
1	I	2428	G
1	I	2429	G
1	I	2430	A
1	I	2435	A
1	I	2441	U
1	I	2445	2MG
1	I	2448	A
1	I	2452	C
1	I	2470	G
1	I	2476	A
1	I	2491	U
1	I	2498	OMC
1	I	2499	C
1	I	2502	G
1	I	2504	PSU
1	I	2505	G
1	I	2513	A
1	I	2518	A

*Continued on next page...*

*Continued from previous page...*

Mol	Chain	Res	Type
1	I	2520	C
1	I	2529	G
1	I	2547	A
1	I	2554	U
1	I	2566	A
1	I	2567	G
1	I	2578	G
1	I	2588	G
1	I	2602	A
1	I	2609	U
1	I	2613	U
1	I	2615	U
1	I	2629	U
1	I	2630	G
1	I	2689	U
1	I	2690	U
1	I	2714	G
1	I	2718	G
1	I	2726	A
1	I	2729	G
1	I	2733	A
1	I	2739	U
1	I	2744	G
1	I	2748	A
1	I	2765	A
1	I	2778	A
1	I	2779	U
1	I	2791	G
1	I	2792	A
1	I	2820	A
1	I	2849	U
1	I	2867	G
1	I	2872	A
1	I	2873	A
1	I	2880	C
1	I	2883	A
1	I	2904	U
2	J	15	A
2	J	18	G
2	J	35	C
2	J	45	A
2	J	57	A

*Continued on next page...*

Continued from previous page...

Mol	Chain	Res	Type
2	J	90	C
2	J	99	A
2	J	109	A

All (9) RNA pucker outliers are listed below:

Mol	Chain	Res	Type
1	I	271	G
1	I	404	A
1	I	784	G
1	I	1176	U
1	I	1533	C
1	I	1787	A
1	I	1875	G
1	I	1911	PSU
1	I	2425	A

## 5.4 Non-standard residues in protein, DNA, RNA chains ⓘ

21 non-standard protein/DNA/RNA residues are modelled in this entry.

In the following table, the Counts columns list the number of bonds (or angles) for which Mogul statistics could be retrieved, the number of bonds (or angles) that are observed in the model and the number of bonds (or angles) that are defined in the Chemical Component Dictionary. The Link column lists molecule types, if any, to which the group is linked. The Z score for a bond length (or angle) is the number of standard deviations the observed value is removed from the expected value. A bond length (or angle) with  $|Z| > 2$  is considered an outlier worth inspection. RMSZ is the root-mean-square of all Z scores of the bond lengths (or angles).

Mol	Type	Chain	Res	Link	Bond lengths			Bond angles		
					Counts	RMSZ	$\# Z  > 2$	Counts	RMSZ	$\# Z  > 2$
1	OMG	I	2251	1	19,26,27	1.20	2 (10%)	21,38,41	1.43	4 (19%)
1	3TD	I	1915	1	19,22,23	1.06	2 (10%)	23,32,35	1.88	2 (8%)
1	1MG	I	745	1	19,26,27	1.25	3 (15%)	18,39,42	1.47	3 (16%)
1	PSU	I	955	1	18,21,22	0.90	0	21,30,33	1.97	4 (19%)
1	2MA	I	2503	1	17,25,26	0.89	1 (5%)	16,37,40	1.63	2 (12%)
1	PSU	I	2504	1	18,21,22	0.95	1 (5%)	21,30,33	1.96	4 (19%)
1	PSU	I	746	1	18,21,22	0.98	0	21,30,33	1.86	4 (19%)
1	6MZ	I	1618	1	17,25,26	1.15	3 (17%)	15,36,39	2.15	3 (20%)
1	PSU	I	1917	1	18,21,22	0.87	0	21,30,33	1.95	4 (19%)

Mol	Type	Chain	Res	Link	Bond lengths			Bond angles		
					Counts	RMSZ	# Z  > 2	Counts	RMSZ	# Z  > 2
1	G7M	I	2069	1	20,26,27	0.91	1 (5%)	16,39,42	0.49	0
1	PSU	I	2580	1	18,21,22	0.99	2 (11%)	21,30,33	1.96	5 (23%)
1	PSU	I	2457	1	18,21,22	0.91	0	21,30,33	1.98	5 (23%)
1	5MC	I	1962	1	19,22,23	1.28	2 (10%)	26,32,35	1.10	2 (7%)
1	PSU	I	1911	1	18,21,22	0.83	0	21,30,33	2.02	4 (19%)
1	5MU	I	1939	1	19,22,23	1.03	2 (10%)	27,32,35	2.10	6 (22%)
1	PSU	I	2605	1	18,21,22	0.91	0	21,30,33	1.97	4 (19%)
1	5MU	I	747	1	19,22,23	1.04	3 (15%)	27,32,35	2.14	6 (22%)
1	2MG	I	1835	1	18,26,27	1.28	2 (11%)	16,38,41	1.44	3 (18%)
1	OMC	I	2498	1	19,22,23	0.88	1 (5%)	25,31,34	1.03	2 (8%)
1	OMU	I	2552	1	19,22,23	0.97	2 (10%)	25,31,34	1.93	6 (24%)
1	2MG	I	2445	1	18,26,27	1.28	2 (11%)	16,38,41	1.34	2 (12%)

In the following table, the Chirals column lists the number of chiral outliers, the number of chiral centers analysed, the number of these observed in the model and the number defined in the Chemical Component Dictionary. Similar counts are reported in the Torsion and Rings columns. '-' means no outliers of that kind were identified.

Mol	Type	Chain	Res	Link	Chirals	Torsions	Rings
1	OMG	I	2251	1	-	2/5/27/28	0/3/3/3
1	3TD	I	1915	1	-	2/7/25/26	0/2/2/2
1	1MG	I	745	1	-	0/3/25/26	0/3/3/3
1	PSU	I	955	1	-	0/7/25/26	0/2/2/2
1	2MA	I	2503	1	-	2/3/25/26	0/3/3/3
1	PSU	I	2504	1	-	2/7/25/26	0/2/2/2
1	PSU	I	746	1	-	0/7/25/26	0/2/2/2
1	6MZ	I	1618	1	-	0/5/27/28	0/3/3/3
1	PSU	I	1917	1	-	0/7/25/26	0/2/2/2
1	G7M	I	2069	1	-	1/3/25/26	0/3/3/3
1	PSU	I	2580	1	-	0/7/25/26	0/2/2/2
1	PSU	I	2457	1	-	0/7/25/26	0/2/2/2
1	5MC	I	1962	1	-	0/7/25/26	0/2/2/2
1	PSU	I	1911	1	-	4/7/25/26	0/2/2/2
1	5MU	I	1939	1	-	0/7/25/26	0/2/2/2
1	PSU	I	2605	1	-	0/7/25/26	0/2/2/2
1	5MU	I	747	1	-	0/7/25/26	0/2/2/2
1	2MG	I	1835	1	-	1/5/27/28	0/3/3/3
1	OMC	I	2498	1	-	3/9/27/28	0/2/2/2

Continued on next page...

*Continued from previous page...*

Mol	Type	Chain	Res	Link	Chirals	Torsions	Rings
1	OMU	I	2552	1	-	1/9/27/28	0/2/2/2
1	2MG	I	2445	1	-	2/5/27/28	0/3/3/3

All (29) bond length outliers are listed below:

Mol	Chain	Res	Type	Atoms	Z	Observed(Å)	Ideal(Å)
1	I	1962	5MC	C5-C4	-4.25	1.40	1.44
1	I	1835	2MG	C5-C6	-2.94	1.41	1.47
1	I	2445	2MG	C5-C6	-2.94	1.41	1.47
1	I	2445	2MG	C8-N7	-2.92	1.30	1.34
1	I	745	1MG	C8-N7	-2.89	1.30	1.34
1	I	2251	OMG	C8-N7	-2.88	1.30	1.34
1	I	2251	OMG	C5-C6	-2.87	1.41	1.47
1	I	1835	2MG	C8-N7	-2.86	1.30	1.34
1	I	2069	G7M	C8-N9	2.84	1.38	1.33
1	I	2498	OMC	C2-N1	-2.56	1.34	1.40
1	I	747	5MU	C2-N1	-2.55	1.34	1.38
1	I	2552	OMU	C2-N1	-2.50	1.34	1.38
1	I	1618	6MZ	C6-C5	-2.47	1.41	1.44
1	I	1962	5MC	C2-N1	-2.46	1.34	1.40
1	I	1915	3TD	C4-N3	-2.43	1.35	1.40
1	I	1939	5MU	C2-N1	-2.42	1.34	1.38
1	I	1915	3TD	C4-C5	-2.40	1.42	1.47
1	I	1618	6MZ	C8-N7	-2.38	1.30	1.34
1	I	2503	2MA	C8-N7	-2.36	1.31	1.34
1	I	745	1MG	C6-N1	-2.25	1.35	1.39
1	I	745	1MG	C5-C6	-2.15	1.41	1.47
1	I	747	5MU	C4-C5	-2.10	1.41	1.44
1	I	2580	PSU	O4'-C1'	-2.08	1.41	1.43
1	I	2552	OMU	C4-N3	-2.07	1.35	1.38
1	I	2580	PSU	C4-N3	-2.05	1.35	1.38
1	I	747	5MU	C4-N3	-2.05	1.35	1.38
1	I	1939	5MU	C4-N3	-2.04	1.35	1.38
1	I	1618	6MZ	C4-N3	-2.02	1.32	1.35
1	I	2504	PSU	C4-N3	-2.02	1.35	1.38

All (75) bond angle outliers are listed below:

Mol	Chain	Res	Type	Atoms	Z	Observed(°)	Ideal(°)
1	I	1915	3TD	N1-C2-N3	6.71	121.00	116.13
1	I	1618	6MZ	C2-N1-C6	5.98	121.24	116.60
1	I	1911	PSU	N1-C2-N3	5.58	121.06	115.17

*Continued on next page...*

*Continued from previous page...*

Mol	Chain	Res	Type	Atoms	Z	Observed(°)	Ideal(°)
1	I	2504	PSU	N1-C2-N3	5.51	120.98	115.17
1	I	955	PSU	N1-C2-N3	5.50	120.97	115.17
1	I	2457	PSU	N1-C2-N3	5.50	120.97	115.17
1	I	747	5MU	C4-N3-C2	-5.49	120.14	127.34
1	I	1917	PSU	N1-C2-N3	5.46	120.93	115.17
1	I	2580	PSU	N1-C2-N3	5.46	120.93	115.17
1	I	2605	PSU	N1-C2-N3	5.41	120.87	115.17
1	I	1939	5MU	C4-N3-C2	-5.37	120.31	127.34
1	I	746	PSU	N1-C2-N3	5.34	120.80	115.17
1	I	2552	OMU	C4-N3-C2	-5.10	120.28	126.61
1	I	2503	2MA	C4-N3-C2	-4.84	119.58	123.30
1	I	747	5MU	N3-C2-N1	4.76	121.09	114.89
1	I	1939	5MU	N3-C2-N1	4.73	121.05	114.89
1	I	2552	OMU	N3-C2-N1	4.65	120.95	114.89
1	I	747	5MU	C5-C4-N3	4.61	119.33	115.32
1	I	2605	PSU	C4-N3-C2	-4.56	120.08	126.37
1	I	1939	5MU	C5-C4-N3	4.56	119.29	115.32
1	I	1911	PSU	C4-N3-C2	-4.53	120.14	126.37
1	I	1618	6MZ	N3-C2-N1	-4.50	122.56	128.67
1	I	955	PSU	C4-N3-C2	-4.47	120.21	126.37
1	I	2504	PSU	C4-N3-C2	-4.47	120.22	126.37
1	I	1917	PSU	C4-N3-C2	-4.45	120.24	126.37
1	I	746	PSU	C4-N3-C2	-4.41	120.30	126.37
1	I	2457	PSU	C4-N3-C2	-4.36	120.37	126.37
1	I	2580	PSU	C4-N3-C2	-4.30	120.44	126.37
1	I	747	5MU	O4-C4-C5	-4.25	120.06	124.92
1	I	1915	3TD	C4-N3-C2	-4.11	120.26	124.61
1	I	2445	2MG	C8-N7-C5	3.88	109.16	102.55
1	I	1939	5MU	O4-C4-C5	-3.87	120.49	124.92
1	I	1835	2MG	C8-N7-C5	3.86	109.13	102.55
1	I	745	1MG	C8-N7-C5	3.85	109.10	102.55
1	I	2251	OMG	C8-N7-C5	3.84	109.08	102.55
1	I	2503	2MA	C8-N7-C5	3.77	108.97	102.55
1	I	1939	5MU	C5-C6-N1	-3.46	119.56	123.31
1	I	747	5MU	C5-C6-N1	-3.45	119.56	123.31
1	I	1962	5MC	C5-C6-N1	-3.38	119.64	123.31
1	I	2552	OMU	CM2-O2'-C2'	-3.36	105.84	114.47
1	I	2457	PSU	O2-C2-N1	-3.36	119.33	122.79
1	I	2552	OMU	C5-C4-N3	3.27	119.38	114.80
1	I	2605	PSU	O2-C2-N1	-3.17	119.52	122.79
1	I	1911	PSU	O2-C2-N1	-3.14	119.55	122.79
1	I	1917	PSU	O2-C2-N1	-3.10	119.59	122.79

*Continued on next page...*

*Continued from previous page...*

Mol	Chain	Res	Type	Atoms	Z	Observed(°)	Ideal(°)
1	I	2580	PSU	O2-C2-N1	-3.08	119.62	122.79
1	I	745	1MG	C5-C6-N1	3.04	118.36	113.96
1	I	746	PSU	O2-C2-N1	-3.04	119.65	122.79
1	I	955	PSU	O2-C2-N1	-3.03	119.66	122.79
1	I	2251	OMG	CM2-O2'-C2'	-3.01	106.76	114.47
1	I	2504	PSU	O2-C2-N1	-2.97	119.72	122.79
1	I	2498	OMC	CM2-O2'-C2'	-2.93	106.96	114.47
1	I	2552	OMU	O4-C4-C5	-2.76	120.39	125.16
1	I	747	5MU	O2-C2-N1	-2.69	119.30	122.80
1	I	1618	6MZ	C4-C5-N7	-2.63	106.55	109.34
1	I	2251	OMG	C2-N1-C6	-2.63	120.29	125.11
1	I	2552	OMU	O2-C2-N1	-2.46	119.59	122.80
1	I	1939	5MU	O2-C2-N1	-2.45	119.61	122.80
1	I	2504	PSU	C6-N1-C2	-2.34	120.52	122.69
1	I	2457	PSU	C6-N1-C2	-2.34	120.52	122.69
1	I	745	1MG	O6-C6-C5	-2.30	120.39	124.18
1	I	955	PSU	C6-N1-C2	-2.30	120.56	122.69
1	I	1962	5MC	O2-C2-N3	-2.29	118.71	122.33
1	I	2580	PSU	C6-N1-C2	-2.29	120.57	122.69
1	I	1911	PSU	C6-N1-C2	-2.25	120.61	122.69
1	I	1835	2MG	C5-C6-N1	2.24	118.33	114.07
1	I	2251	OMG	C5-C6-N1	2.23	118.31	114.07
1	I	1917	PSU	C6-N1-C2	-2.16	120.69	122.69
1	I	2445	2MG	C5-C6-N1	2.15	118.18	114.07
1	I	746	PSU	C6-N1-C2	-2.13	120.72	122.69
1	I	1835	2MG	N1-C2-N2	2.12	118.73	116.56
1	I	2498	OMC	O2-C2-N3	-2.09	119.03	122.33
1	I	2580	PSU	O4'-C1'-C2'	2.07	108.01	105.15
1	I	2457	PSU	O4'-C1'-C2'	2.03	107.96	105.15
1	I	2605	PSU	C6-N1-C2	-2.01	120.83	122.69

There are no chirality outliers.

All (20) torsion outliers are listed below:

Mol	Chain	Res	Type	Atoms
1	I	1915	3TD	O4'-C1'-C5-C6
1	I	2445	2MG	C3'-C4'-C5'-O5'
1	I	2498	OMC	C3'-C4'-C5'-O5'
1	I	2504	PSU	O4'-C4'-C5'-O5'
1	I	1911	PSU	C3'-C4'-C5'-O5'
1	I	1911	PSU	O4'-C4'-C5'-O5'
1	I	2445	2MG	O4'-C4'-C5'-O5'

*Continued on next page...*



*Continued from previous page...*

Mol	Chain	Res	Type	Atoms
1	I	2498	OMC	O4'-C4'-C5'-O5'
1	I	2503	2MA	O4'-C4'-C5'-O5'
1	I	2503	2MA	C3'-C4'-C5'-O5'
1	I	2251	OMG	O4'-C4'-C5'-O5'
1	I	2504	PSU	C3'-C4'-C5'-O5'
1	I	2069	G7M	O4'-C4'-C5'-O5'
1	I	1911	PSU	O4'-C1'-C5-C4
1	I	1911	PSU	O4'-C1'-C5-C6
1	I	1915	3TD	C2'-C1'-C5-C6
1	I	1835	2MG	C3'-C4'-C5'-O5'
1	I	2251	OMG	C3'-C4'-C5'-O5'
1	I	2552	OMU	O4'-C4'-C5'-O5'
1	I	2498	OMC	C2'-C1'-N1-C2

There are no ring outliers.

11 monomers are involved in 19 short contacts:

Mol	Chain	Res	Type	Clashes	Symm-Clashes
1	I	2251	OMG	1	0
1	I	1915	3TD	1	0
1	I	745	1MG	3	0
1	I	2503	2MA	2	0
1	I	1618	6MZ	1	0
1	I	1917	PSU	1	0
1	I	2580	PSU	1	0
1	I	2457	PSU	1	0
1	I	1962	5MC	2	0
1	I	1911	PSU	5	0
1	I	2498	OMC	1	0

## 5.5 Carbohydrates [i](#)

There are no oligosaccharides in this entry.

## 5.6 Ligand geometry [i](#)

1 ligand is modelled in this entry.

In the following table, the Counts columns list the number of bonds (or angles) for which Mogul statistics could be retrieved, the number of bonds (or angles) that are observed in the model and the number of bonds (or angles) that are defined in the Chemical Component Dictionary. The

Link column lists molecule types, if any, to which the group is linked. The Z score for a bond length (or angle) is the number of standard deviations the observed value is removed from the expected value. A bond length (or angle) with  $|Z| > 2$  is considered an outlier worth inspection. RMSZ is the root-mean-square of all Z scores of the bond lengths (or angles).

Mol	Type	Chain	Res	Link	Bond lengths			Bond angles		
					Counts	RMSZ	# Z  > 2	Counts	RMSZ	# Z  > 2
8	O8J	I	3001	-	36,40,40	1.03	1 (2%)	43,55,55	0.98	2 (4%)

In the following table, the Chirals column lists the number of chiral outliers, the number of chiral centers analysed, the number of these observed in the model and the number defined in the Chemical Component Dictionary. Similar counts are reported in the Torsion and Rings columns. '-' means no outliers of that kind were identified.

Mol	Type	Chain	Res	Link	Chirals	Torsions	Rings
8	O8J	I	3001	-	-	3/42/58/58	0/2/3/3

All (1) bond length outliers are listed below:

Mol	Chain	Res	Type	Atoms	Z	Observed(Å)	Ideal(Å)
8	I	3001	O8J	C08-C35	-3.11	1.45	1.50

All (2) bond angle outliers are listed below:

Mol	Chain	Res	Type	Atoms	Z	Observed(°)	Ideal(°)
8	I	3001	O8J	C29-C30-N34	3.21	118.41	112.08
8	I	3001	O8J	C24-O28-C29	2.43	121.80	117.76

There are no chirality outliers.

All (3) torsion outliers are listed below:

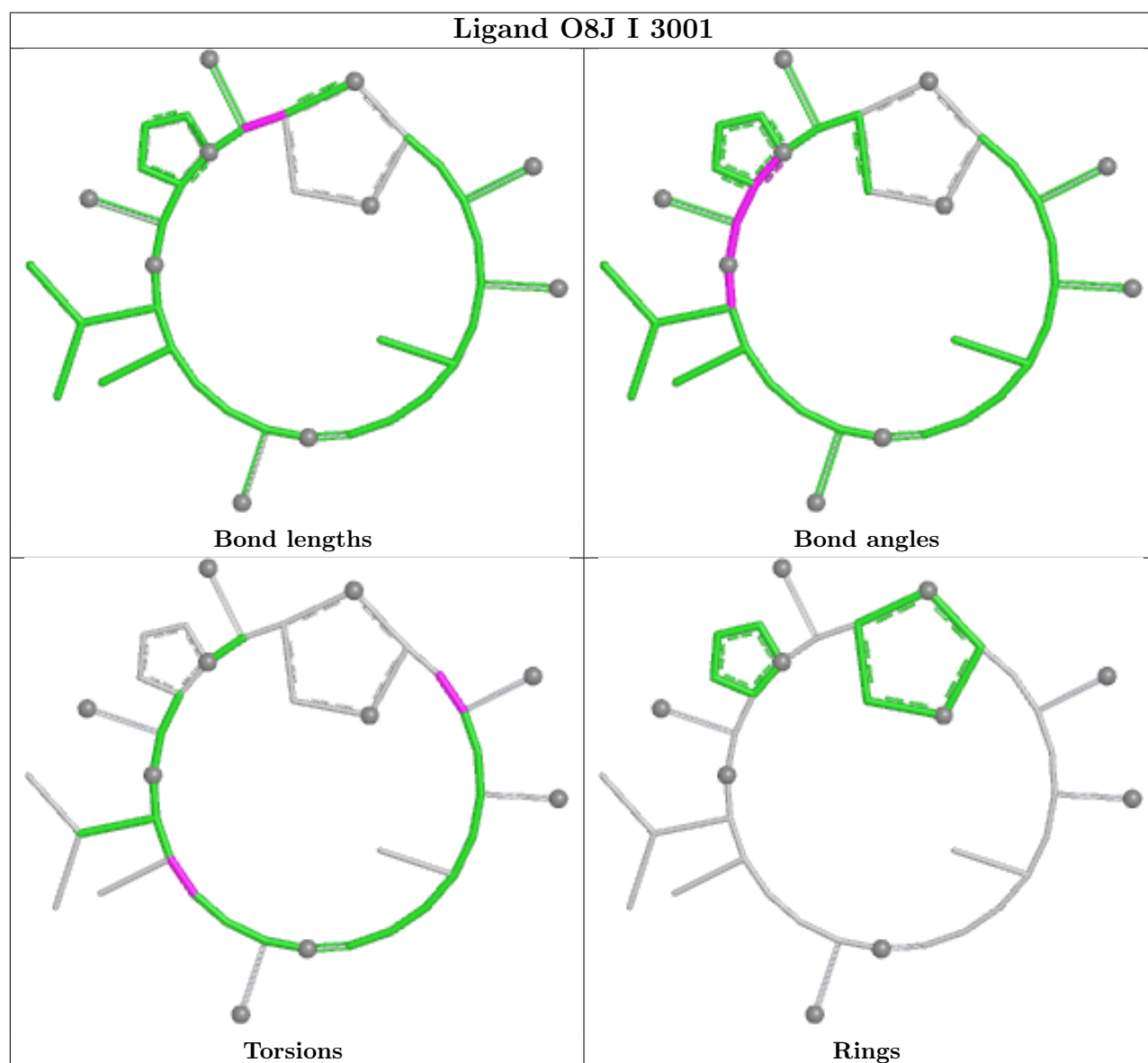
Mol	Chain	Res	Type	Atoms
8	I	3001	O8J	O11-C04-C05-C06
8	I	3001	O8J	C03-C04-C05-C06
8	I	3001	O8J	C20-C21-C22-C23

There are no ring outliers.

1 monomer is involved in 1 short contact:

Mol	Chain	Res	Type	Clashes	Symm-Clashes
8	I	3001	O8J	1	0

The following is a two-dimensional graphical depiction of Mogul quality analysis of bond lengths, bond angles, torsion angles, and ring geometry for all instances of the Ligand of Interest. In addition, ligands with molecular weight > 250 and outliers as shown on the validation Tables will also be included. For torsion angles, if less than 5% of the Mogul distribution of torsion angles is within 10 degrees of the torsion angle in question, then that torsion angle is considered an outlier. Any bond that is central to one or more torsion angles identified as an outlier by Mogul will be highlighted in the graph. For rings, the root-mean-square deviation (RMSD) between the ring in question and similar rings identified by Mogul is calculated over all ring torsion angles. If the average RMSD is greater than 60 degrees and the minimal RMSD between the ring in question and any Mogul-identified rings is also greater than 60 degrees, then that ring is considered an outlier. The outliers are highlighted in purple. The color gray indicates Mogul did not find sufficient equivalents in the CSD to analyse the geometry.



## 5.7 Other polymers

There are no such residues in this entry.

## 5.8 Polymer linkage issues

There are no chain breaks in this entry.

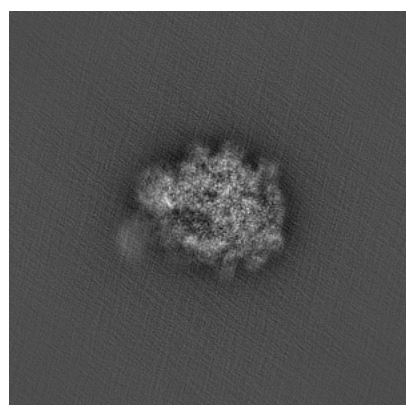
## 6 Map visualisation [i](#)

This section contains visualisations of the EMDB entry EMD-20304. These allow visual inspection of the internal detail of the map and identification of artifacts.

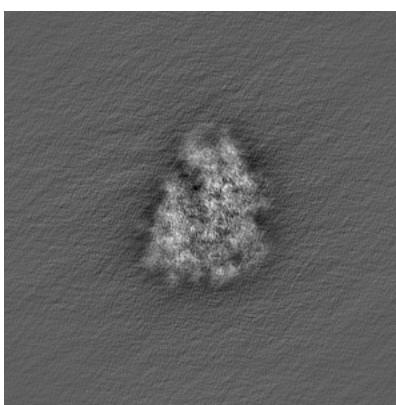
No raw map or half-maps were deposited for this entry and therefore no images, graphs, etc. pertaining to the raw map can be shown.

### 6.1 Orthogonal projections [i](#)

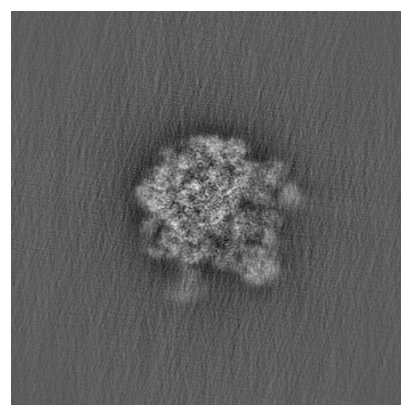
#### 6.1.1 Primary map



X



Y

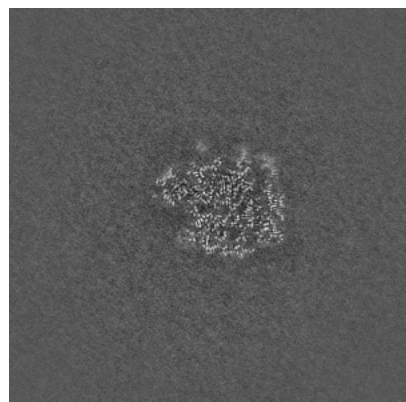


Z

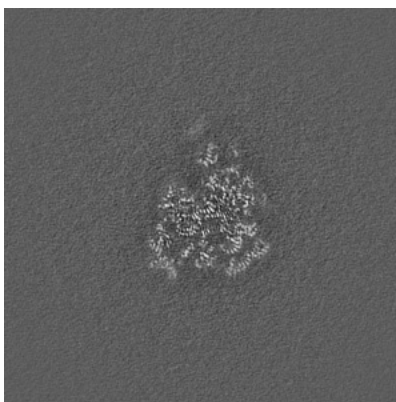
The images above show the map projected in three orthogonal directions.

### 6.2 Central slices [i](#)

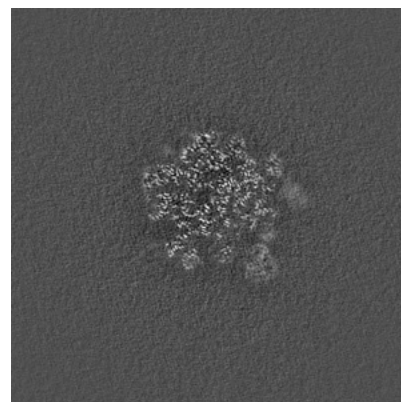
#### 6.2.1 Primary map



X Index: 300



Y Index: 300

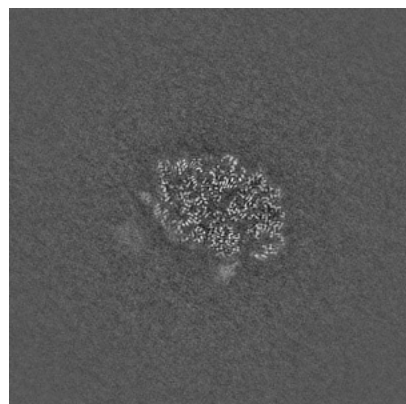


Z Index: 300

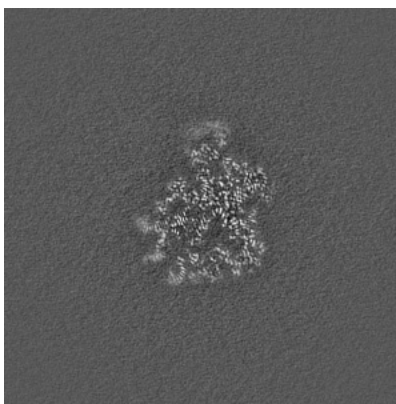
The images above show central slices of the map in three orthogonal directions.

## 6.3 Largest variance slices [i](#)

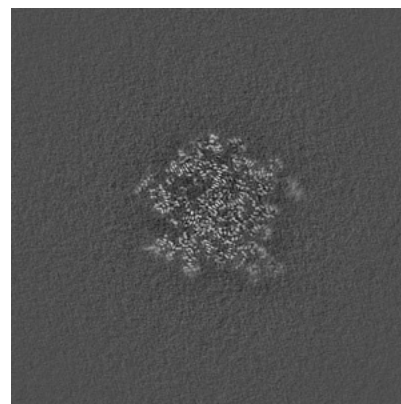
### 6.3.1 Primary map



X Index: 280



Y Index: 333

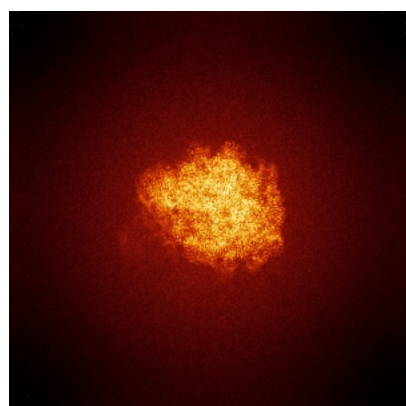


Z Index: 310

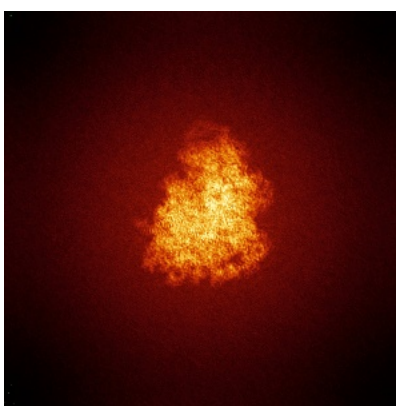
The images above show the largest variance slices of the map in three orthogonal directions.

## 6.4 Orthogonal standard-deviation projections (False-color) [i](#)

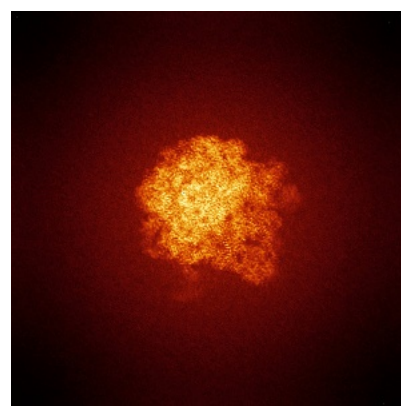
### 6.4.1 Primary map



X



Y



Z

The images above show the map standard deviation projections with false color in three orthogonal directions. Minimum values are shown in green, max in blue, and dark to light orange shades represent small to large values respectively.

## 6.5 Orthogonal surface views [i](#)

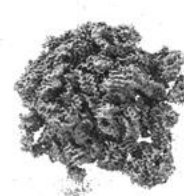
### 6.5.1 Primary map



X



Y



Z

The images above show the 3D surface view of the map at the recommended contour level 6.0. These images, in conjunction with the slice images, may facilitate assessment of whether an appropriate contour level has been provided.

## 6.6 Mask visualisation [i](#)

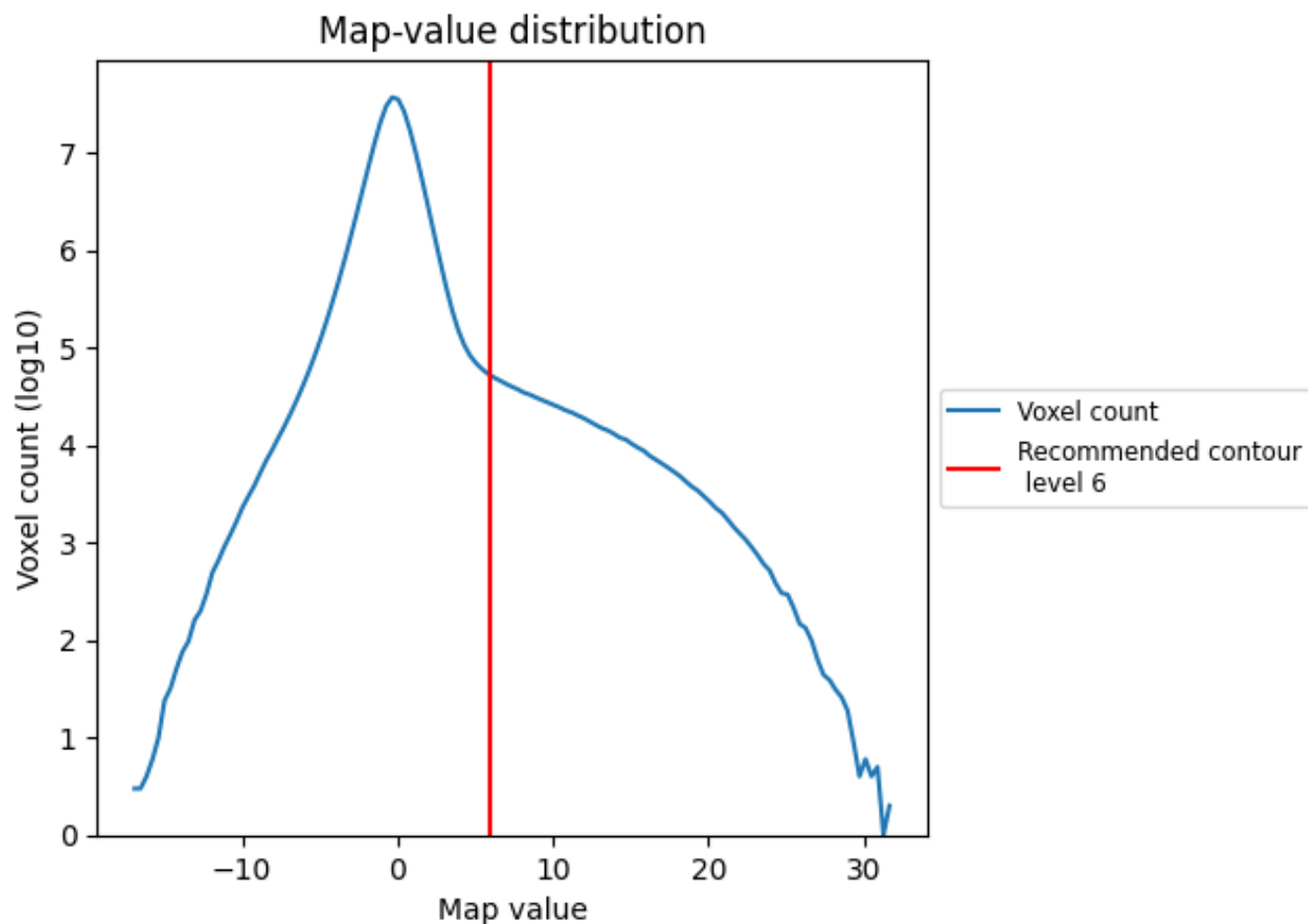
This section was not generated. No masks/segmentation were deposited.



## 7 Map analysis [i](#)

This section contains the results of statistical analysis of the map.

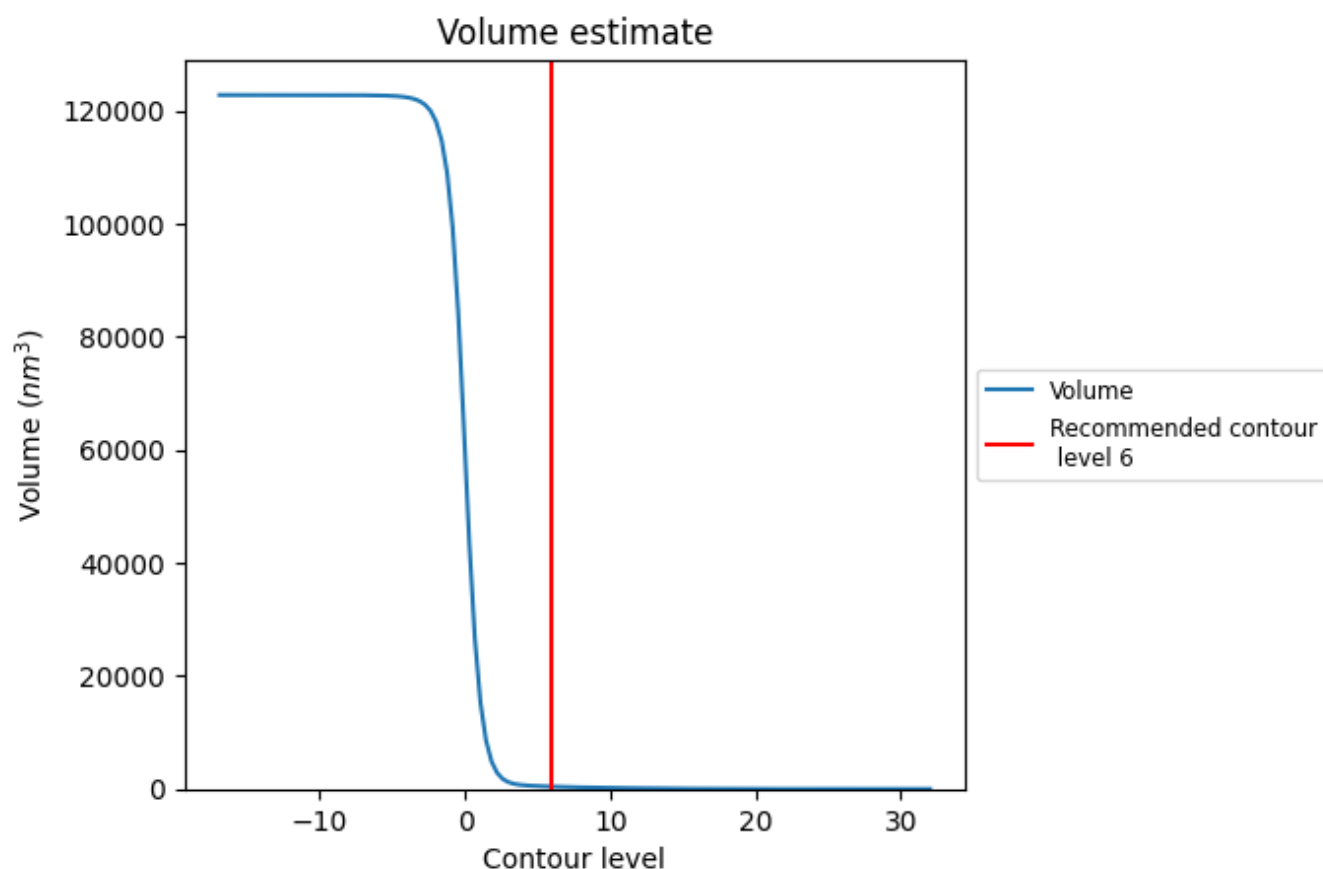
### 7.1 Map-value distribution [i](#)



The map-value distribution is plotted in 128 intervals along the x-axis. The y-axis is logarithmic. A spike in this graph at zero usually indicates that the volume has been masked.



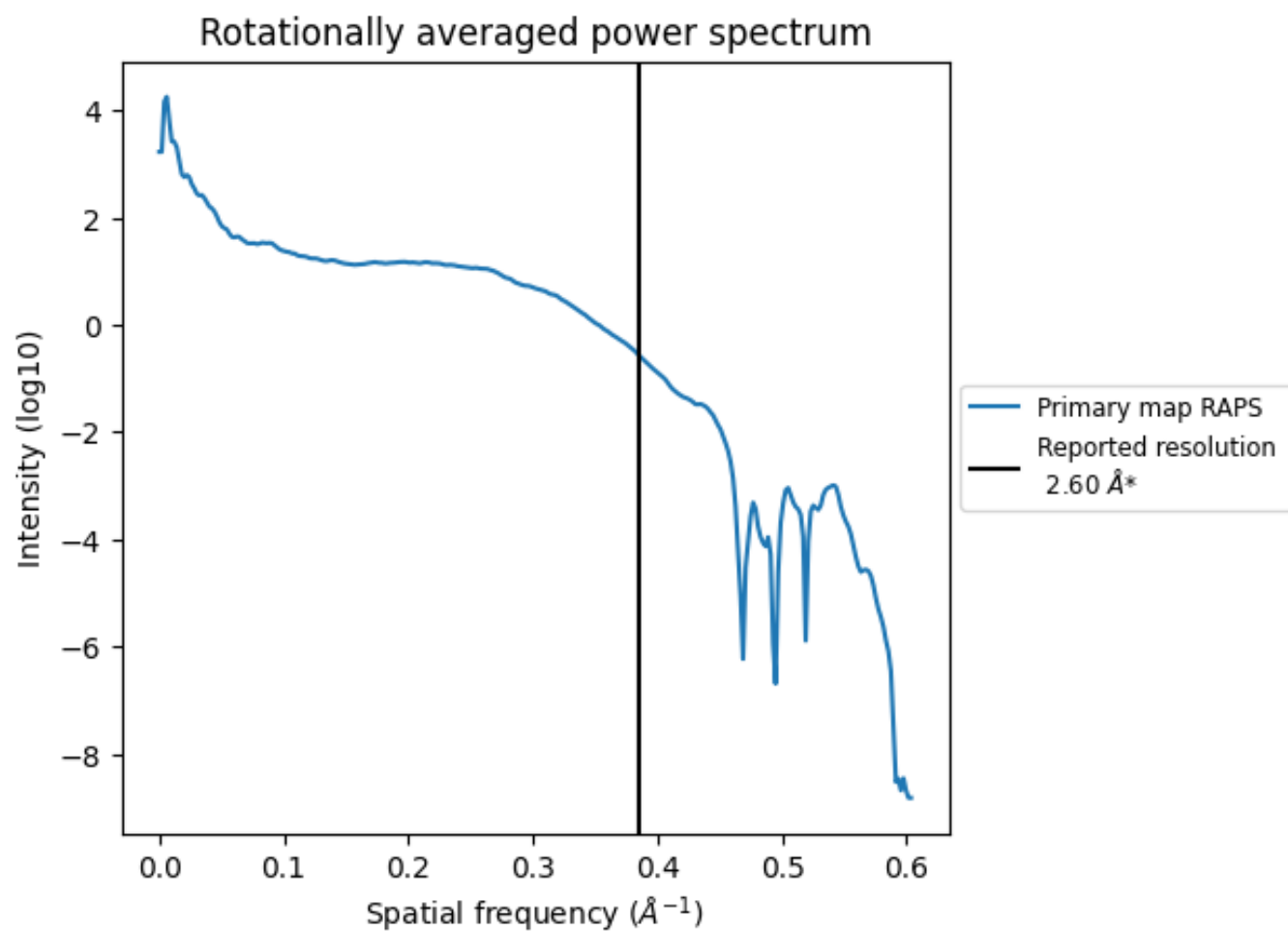
## 7.2 Volume estimate [i](#)



The volume at the recommended contour level is 414 nm<sup>3</sup>; this corresponds to an approximate mass of 374 kDa.

The volume estimate graph shows how the enclosed volume varies with the contour level. The recommended contour level is shown as a vertical line and the intersection between the line and the curve gives the volume of the enclosed surface at the given level.

### 7.3 Rotationally averaged power spectrum ⓘ



\*Reported resolution corresponds to spatial frequency of 0.385 Å<sup>-1</sup>

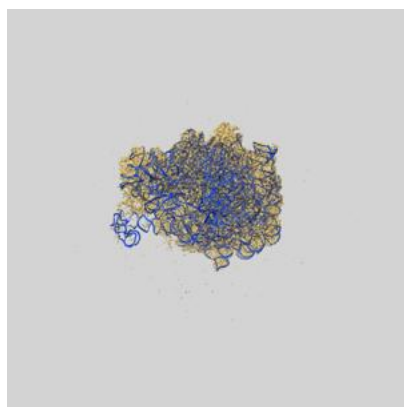
## 8 Fourier-Shell correlation

This section was not generated. No FSC curve or half-maps provided.

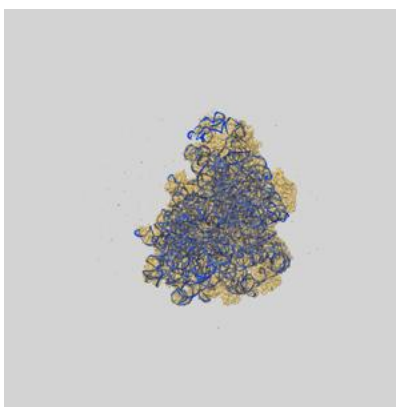
## 9 Map-model fit [i](#)

This section contains information regarding the fit between EMDB map EMD-20304 and PDB model 6PCQ. Per-residue inclusion information can be found in section [3](#) on page [5](#).

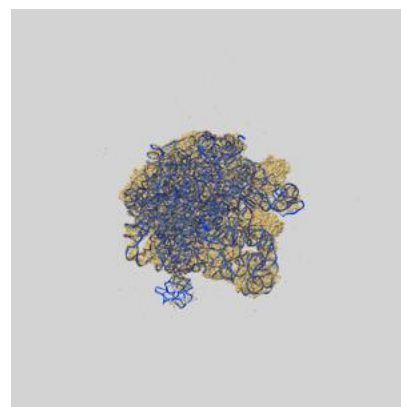
### 9.1 Map-model overlay [i](#)



X



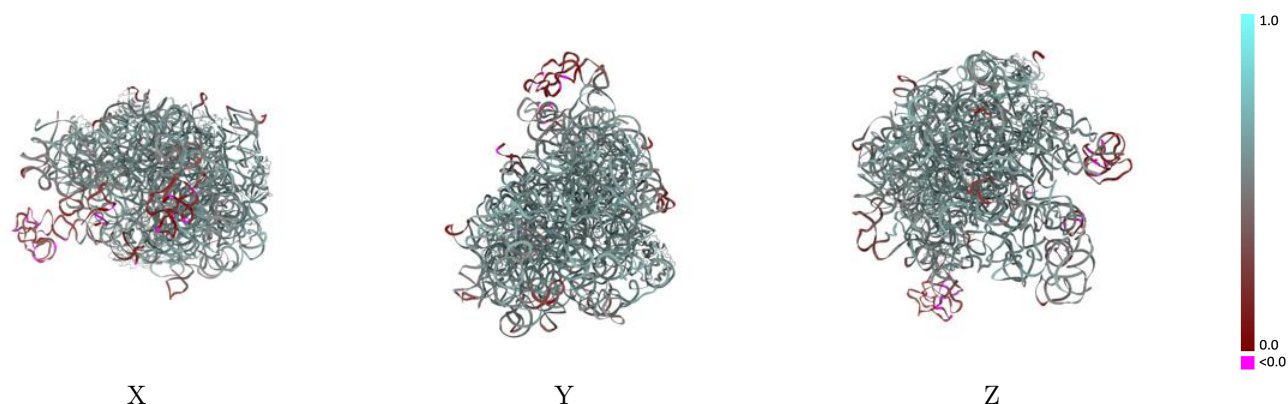
Y



Z

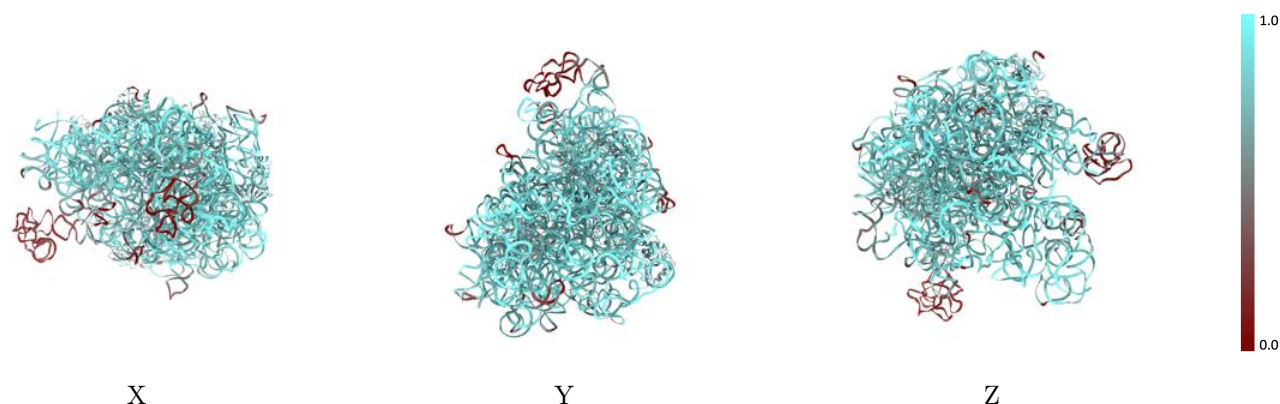
The images above show the 3D surface view of the map at the recommended contour level 6.0 at 50% transparency in yellow overlaid with a ribbon representation of the model coloured in blue. These images allow for the visual assessment of the quality of fit between the atomic model and the map.

## 9.2 Q-score mapped to coordinate model [i](#)



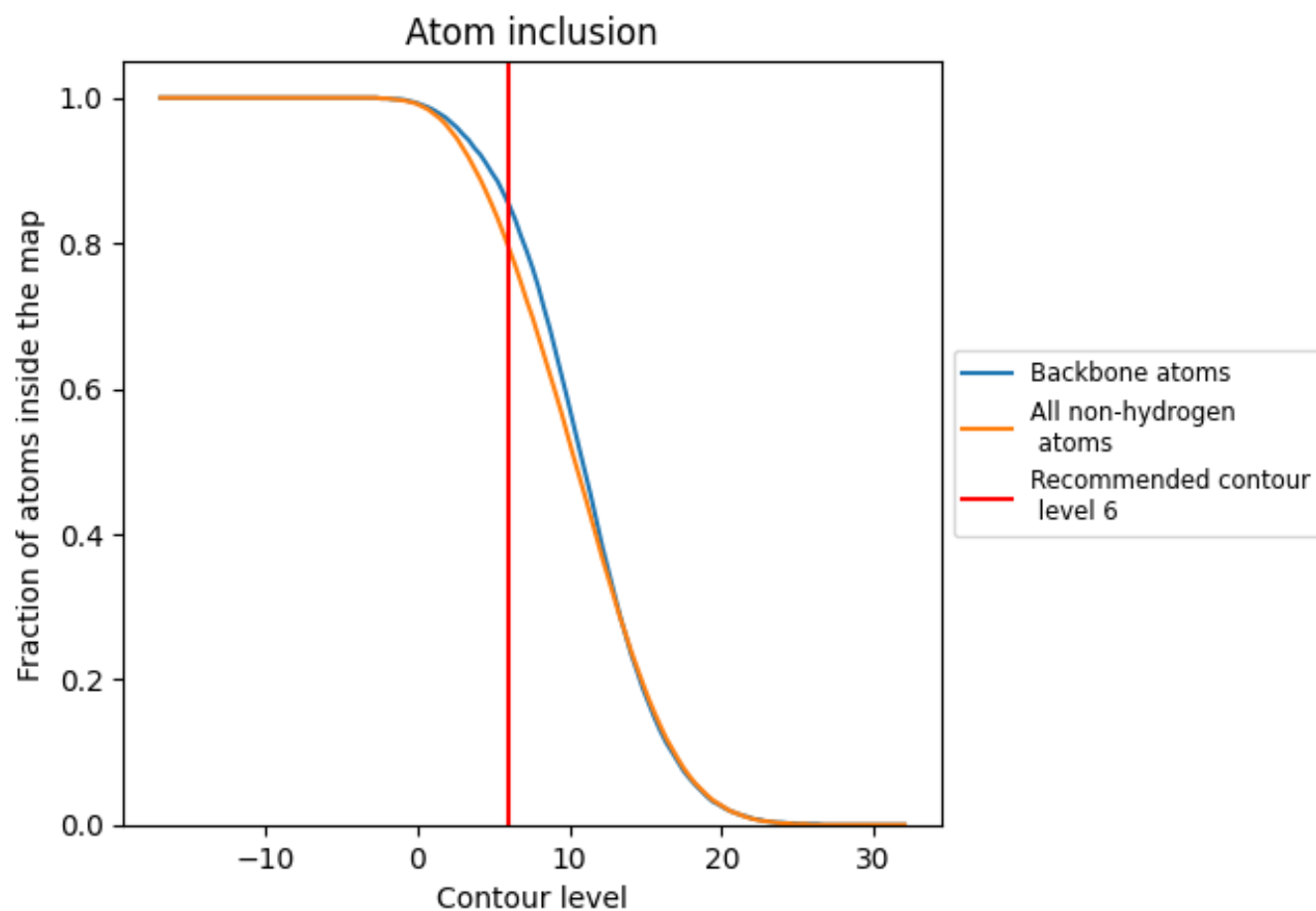
The images above show the model with each residue coloured according to its Q-score. This shows their resolvability in the map with higher Q-score values reflecting better resolvability. Please note: Q-score is calculating the resolvability of atoms, and thus high values are only expected at resolutions at which atoms can be resolved. Low Q-score values may therefore be expected for many entries.

## 9.3 Atom inclusion mapped to coordinate model [i](#)



The images above show the model with each residue coloured according to its atom inclusion. This shows to what extent they are inside the map at the recommended contour level (6).

## 9.4 Atom inclusion [i](#)



At the recommended contour level, 85% of all backbone atoms, 79% of all non-hydrogen atoms, are inside the map.

9.5 Map-model fit summary ⓘ

The table lists the average atom inclusion at the recommended contour level (6) and Q-score for the entire model and for each chain.

Chain	Atom inclusion	Q-score
All	<div><div></div></div> 0.7940	<div><div></div></div> 0.5320
I	<div><div></div></div> 0.8030	<div><div></div></div> 0.5290
J	<div><div></div></div> 0.8070	<div><div></div></div> 0.5160
K	<div><div></div></div> 0.7360	<div><div></div></div> 0.5600
L	<div><div></div></div> 0.7040	<div><div></div></div> 0.5520
M	<div><div></div></div> 0.6790	<div><div></div></div> 0.5470
N	<div><div></div></div> 0.7110	<div><div></div></div> 0.5750
O	<div><div></div></div> 0.7300	<div><div></div></div> 0.5700

1.0

0.0

<0.0