



Full wwPDB X-ray Structure Validation Report ⓘ

Dec 16, 2024 – 02:03 AM EST

PDB ID : 3PCB
Title : STRUCTURE OF PROTOCATECHUATE 3,4-DIOXYGENASE COM-
PLEXED WITH 3-HYDROXYBENZOATE
Authors : Elango, N.; Orville, A.M.; Lipscomb, J.D.; Ohlendorf, D.H.
Deposited on : 1997-04-25
Resolution : 2.19 Å(reported)

This is a Full wwPDB X-ray Structure Validation Report for a publicly released PDB entry.

We welcome your comments at validation@mail.wwpdb.org

A user guide is available at

<https://www.wwpdb.org/validation/2017/XrayValidationReportHelp>

with specific help available everywhere you see the ⓘ symbol.

The types of validation reports are described at

<http://www.wwpdb.org/validation/2017/FAQs#types>.

The following versions of software and data (see [references ⓘ](#)) were used in the production of this report:

MolProbity	:	4.02b-467
Mogul	:	2022.3.0, CSD as543be (2022)
Xtriage (Phenix)	:	NOT EXECUTED
EDS	:	NOT EXECUTED
Percentile statistics	:	20231227.v01 (using entries in the PDB archive December 27th 2023)
Ideal geometry (proteins)	:	Engh & Huber (2001)
Ideal geometry (DNA, RNA)	:	Parkinson et al. (1996)
Validation Pipeline (wwPDB-VP)	:	2.40

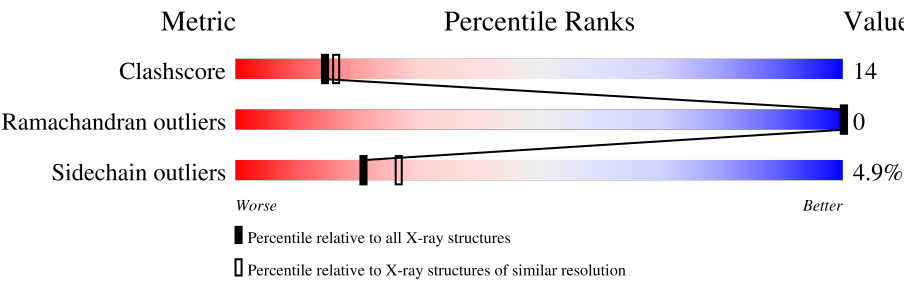
1 Overall quality at a glance i

The following experimental techniques were used to determine the structure:

X-RAY DIFFRACTION

The reported resolution of this entry is 2.19 Å.

Percentile scores (ranging between 0-100) for global validation metrics of the entry are shown in the following graphic. The table shows the number of entries on which the scores are based.



Metric	Whole archive (#Entries)	Similar resolution (#Entries, resolution range(Å))
Clashscore	180529	6634 (2.20-2.20)
Ramachandran outliers	177936	6560 (2.20-2.20)
Sidechain outliers	177891	6561 (2.20-2.20)

The table below summarises the geometric issues observed across the polymeric chains and their fit to the electron density. The red, orange, yellow and green segments of the lower bar indicate the fraction of residues that contain outliers for ≥ 3 , 2, 1 and 0 types of geometric quality criteria respectively. A grey segment represents the fraction of residues that are not modelled. The numeric value for each fraction is indicated below the corresponding segment, with a dot representing fractions $\leq 5\%$.

Note EDS was not executed.

Mol	Chain	Length	Quality of chain
1	A	200	<div><div>71%</div><div>24%</div><div>.</div></div>
1	B	200	<div><div>71%</div><div>24%</div><div>.</div></div>
1	C	200	<div><div>72%</div><div>25%</div><div>.</div></div>
1	D	200	<div><div>71%</div><div>25%</div><div>.</div></div>
1	E	200	<div><div>68%</div><div>27%</div><div>..</div></div>
1	F	200	<div><div>66%</div><div>29%</div><div>.</div></div>
2	M	238	<div><div>69%</div><div>25%</div><div>...</div></div>
2	N	238	<div><div>76%</div><div>18%</div><div>..</div></div>

Continued on next page...

Continued from previous page...

Mol	Chain	Length	Quality of chain
2	O	238	<div><div></div><div>68%26%</div><div>...</div></div>
2	P	238	<div><div></div><div>72%20%</div><div>...</div></div>
2	Q	238	<div><div></div><div>68%26%</div><div>..</div></div>
2	R	238	<div><div></div><div>68%24%5%</div><div>.</div></div>

2 Entry composition

There are 5 unique types of molecules in this entry. The entry contains 22032 atoms, of which 0 are hydrogens and 0 are deuteriums.

In the tables below, the ZeroOcc column contains the number of atoms modelled with zero occupancy, the AltConf column contains the number of residues with at least one atom in alternate conformation and the Trace column contains the number of residues modelled with at most 2 atoms.

- Molecule 1 is a protein called Protocatechuate 3,4-dioxygenase alpha chain.

Mol	Chain	Residues	Atoms					ZeroOcc	AltConf	Trace
1	A	200	Total	C	N	O	S	0	0	0
			1571	993	276	299	3			
1	B	200	Total	C	N	O	S	0	0	0
			1571	993	276	299	3			
1	C	200	Total	C	N	O	S	0	0	0
			1571	993	276	299	3			
1	D	200	Total	C	N	O	S	0	0	0
			1571	993	276	299	3			
1	E	200	Total	C	N	O	S	0	0	0
			1571	993	276	299	3			
1	F	200	Total	C	N	O	S	0	0	0
			1571	993	276	299	3			

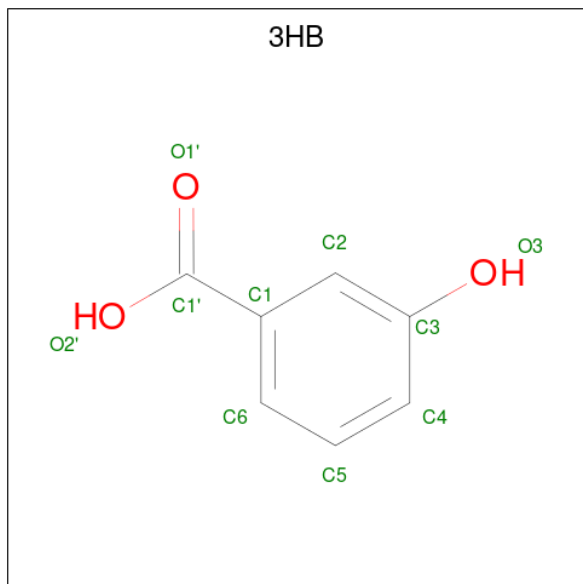
- Molecule 2 is a protein called Protocatechuate 3,4-dioxygenase beta chain.

Mol	Chain	Residues	Atoms					ZeroOcc	AltConf	Trace
2	M	233	Total	C	N	O	S	0	0	0
			1844	1173	334	329	8			
2	N	233	Total	C	N	O	S	0	0	0
			1844	1173	334	329	8			
2	O	233	Total	C	N	O	S	0	0	0
			1844	1173	334	329	8			
2	P	233	Total	C	N	O	S	0	0	0
			1844	1173	334	329	8			
2	Q	233	Total	C	N	O	S	0	0	0
			1844	1173	334	329	8			
2	R	233	Total	C	N	O	S	0	0	0
			1844	1173	334	329	8			

- Molecule 3 is FE (III) ION (three-letter code: FE) (formula: Fe).

Mol	Chain	Residues	Atoms	ZeroOcc	AltConf
3	M	1	Total Fe 1 1	0	0
3	N	1	Total Fe 1 1	0	0
3	O	1	Total Fe 1 1	0	0
3	P	1	Total Fe 1 1	0	0
3	Q	1	Total Fe 1 1	0	0
3	R	1	Total Fe 1 1	0	0

- Molecule 4 is 3-HYDROXYBENZOIC ACID (three-letter code: 3HB) (formula: C₇H₆O₃).



Mol	Chain	Residues	Atoms	ZeroOcc	AltConf
4	M	1	Total C O 10 7 3	0	0
4	M	1	Total C O 10 7 3	0	0
4	N	1	Total C O 10 7 3	0	0
4	N	1	Total C O 10 7 3	0	0
4	O	1	Total C O 10 7 3	0	0
4	O	1	Total C O 10 7 3	0	0

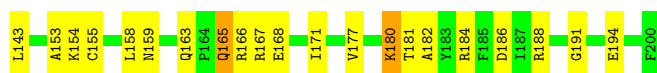
Continued on next page...

Continued from previous page...

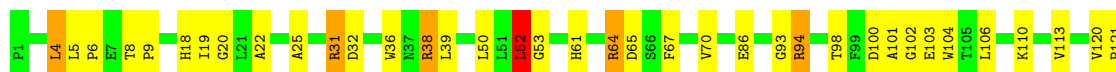
Mol	Chain	Residues	Atoms			ZeroOcc	AltConf
4	P	1	Total	C	O	0	0
			10	7	3		
4	P	1	Total	C	O	0	0
			10	7	3		
4	Q	1	Total	C	O	0	0
			10	7	3		
4	Q	1	Total	C	O	0	0
			10	7	3		
4	R	1	Total	C	O	0	0
			10	7	3		
4	R	1	Total	C	O	0	0
			10	7	3		

- Molecule 5 is water.

Mol	Chain	Residues	Atoms		ZeroOcc	AltConf
5	A	83	Total	O	0	0
			83	83		
5	M	151	Total	O	0	0
			151	151		
5	B	79	Total	O	0	0
			79	79		
5	N	161	Total	O	0	0
			161	161		
5	C	81	Total	O	0	0
			81	81		
5	O	155	Total	O	0	0
			155	155		
5	D	81	Total	O	0	0
			81	81		
5	P	152	Total	O	0	0
			152	152		
5	E	84	Total	O	0	0
			84	84		
5	Q	153	Total	O	0	0
			153	153		
5	F	80	Total	O	0	0
			80	80		
5	R	156	Total	O	0	0
			156	156		



- Molecule 1: Protocatechuate 3,4-dioxygenase alpha chain



- Molecule 1: Protocatechuate 3,4-dioxygenase alpha chain

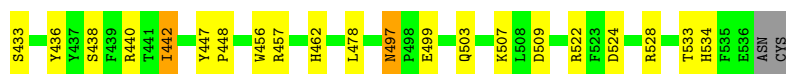
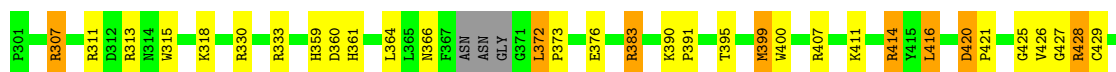


- Molecule 2: Protocatechuate 3,4-dioxygenase beta chain



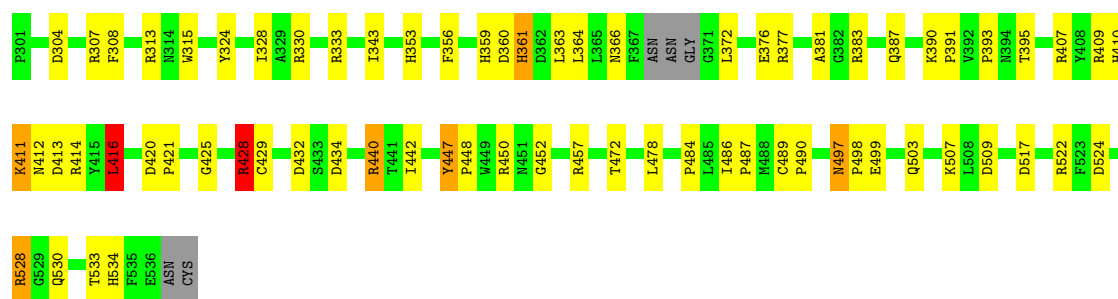
ASN
CYS

- Molecule 2: Protocatechuate 3,4-dioxygenase beta chain



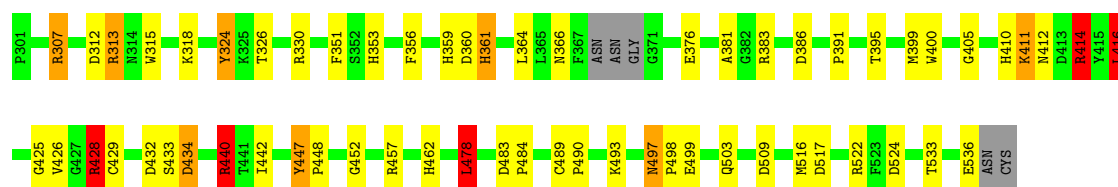
- Molecule 2: Protocatechuate 3,4-dioxygenase beta chain





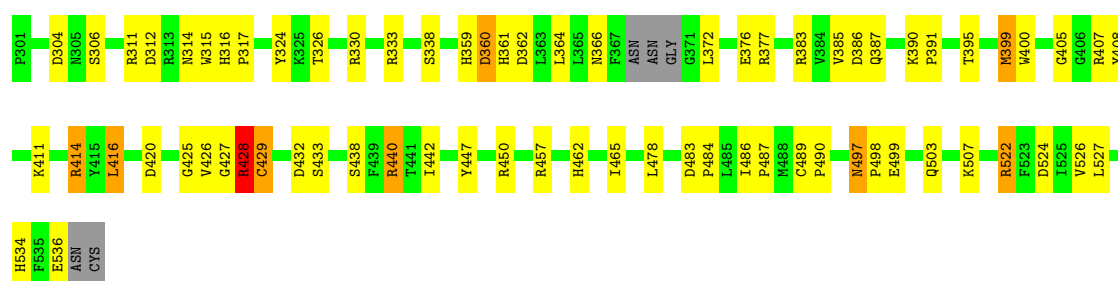
- Molecule 2: Protocatechuate 3,4-dioxygenase beta chain

Chain P: 72% 20%



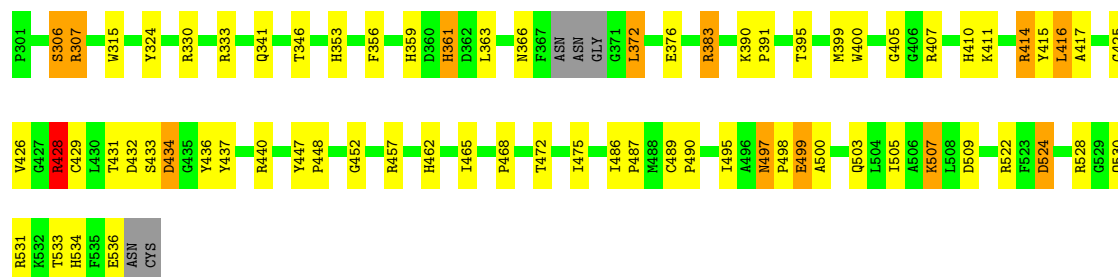
- Molecule 2: Protocatechuate 3,4-dioxygenase beta chain

Chain Q: 68% 26%



- Molecule 2: Protocatechuate 3,4-dioxygenase beta chain

Chain R: 68% 24% 5%



4 Data and refinement statistics

Xtriage (Phenix) and EDS were not executed - this section is therefore incomplete.

Property	Value	Source
Space group	I 1 2 1	Depositor
Cell constants a, b, c, α , β , γ	196.95 Å 127.56 Å 134.31 Å 90.00° 97.60° 90.00°	Depositor
Resolution (Å)	6.00 – 2.19	Depositor
% Data completeness (in resolution range)	78.2 (6.00-2.19)	Depositor
R_{merge}	(Not available)	Depositor
R_{sym}	0.06	Depositor
Refinement program	PROLSQ	Depositor
R, R_{free}	0.159 , (Not available)	Depositor
Estimated twinning fraction	No twinning to report.	Xtriage
Total number of atoms	22032	wwPDB-VP
Average B, all atoms (Å ²)	23.0	wwPDB-VP

5 Model quality ⓘ

5.1 Standard geometry ⓘ

Bond lengths and bond angles in the following residue types are not validated in this section: 3HB, FE, CME

The Z score for a bond length (or angle) is the number of standard deviations the observed value is removed from the expected value. A bond length (or angle) with $|Z| > 5$ is considered an outlier worth inspection. RMSZ is the root-mean-square of all Z scores of the bond lengths (or angles).

Mol	Chain	Bond lengths		Bond angles	
		RMSZ	# $ Z > 5$	RMSZ	# $ Z > 5$
1	A	0.95	1/1611 (0.1%)	1.68	33/2195 (1.5%)
1	B	0.96	2/1611 (0.1%)	1.67	31/2195 (1.4%)
1	C	1.00	0/1611	1.64	22/2195 (1.0%)
1	D	0.99	1/1611 (0.1%)	1.75	28/2195 (1.3%)
1	E	0.99	0/1611	1.54	21/2195 (1.0%)
1	F	1.02	0/1611	1.65	25/2195 (1.1%)
2	M	1.02	0/1888	1.63	28/2569 (1.1%)
2	N	0.99	0/1888	1.61	27/2569 (1.1%)
2	O	0.99	0/1888	1.62	30/2569 (1.2%)
2	P	0.98	1/1888 (0.1%)	1.58	30/2569 (1.2%)
2	Q	1.03	0/1888	1.63	27/2569 (1.1%)
2	R	1.01	0/1888	1.58	26/2569 (1.0%)
All	All	0.99	5/20994 (0.0%)	1.63	328/28584 (1.1%)

Chiral center outliers are detected by calculating the chiral volume of a chiral center and verifying if the center is modelled as a planar moiety or with the opposite hand. A planarity outlier is detected by checking planarity of atoms in a peptide group, atoms in a mainchain group or atoms of a sidechain that are expected to be planar.

Mol	Chain	#Chirality outliers	#Planarity outliers
1	F	0	1

All (5) bond length outliers are listed below:

Mol	Chain	Res	Type	Atoms	Z	Observed(Å)	Ideal(Å)
1	A	94	ARG	CD-NE	-6.59	1.35	1.46
1	D	94	ARG	CD-NE	-6.48	1.35	1.46
1	B	194	GLU	CD-OE2	-5.92	1.19	1.25
2	P	428	ARG	CG-CD	-5.26	1.38	1.51
1	B	94	ARG	CD-NE	-5.07	1.37	1.46

All (328) bond angle outliers are listed below:

Mol	Chain	Res	Type	Atoms	Z	Observed(°)	Ideal(°)
2	M	440	ARG	NE-CZ-NH2	-23.68	108.46	120.30
2	N	440	ARG	NE-CZ-NH2	-22.88	108.86	120.30
1	D	94	ARG	NE-CZ-NH2	-21.94	109.33	120.30
1	D	133	ARG	CD-NE-CZ	21.20	153.28	123.60
2	R	440	ARG	NE-CZ-NH2	-19.38	110.61	120.30
2	P	440	ARG	NE-CZ-NH2	-19.28	110.66	120.30
1	D	94	ARG	NE-CZ-NH1	17.09	128.85	120.30
1	C	133	ARG	NE-CZ-NH1	17.01	128.81	120.30
2	Q	440	ARG	NE-CZ-NH2	-16.85	111.88	120.30
1	F	94	ARG	NE-CZ-NH1	16.34	128.47	120.30
1	D	133	ARG	NE-CZ-NH1	15.91	128.25	120.30
1	B	94	ARG	NE-CZ-NH1	15.71	128.16	120.30
2	M	440	ARG	NE-CZ-NH1	15.62	128.11	120.30
1	A	94	ARG	NE-CZ-NH1	15.43	128.02	120.30
2	O	440	ARG	NE-CZ-NH2	-15.43	112.59	120.30
1	A	94	ARG	NE-CZ-NH2	-15.31	112.64	120.30
2	O	428	ARG	NE-CZ-NH1	15.07	127.84	120.30
2	P	440	ARG	NE-CZ-NH1	14.64	127.62	120.30
1	B	133	ARG	NE-CZ-NH1	14.09	127.34	120.30
1	C	188	ARG	NE-CZ-NH1	13.21	126.91	120.30
2	Q	428	ARG	NE-CZ-NH1	13.04	126.82	120.30
1	A	133	ARG	NE-CZ-NH2	-12.65	113.97	120.30
1	C	133	ARG	NE-CZ-NH2	-12.55	114.03	120.30
2	Q	457	ARG	NE-CZ-NH1	12.42	126.51	120.30
2	O	428	ARG	NE-CZ-NH2	-12.41	114.10	120.30
1	F	94	ARG	NE-CZ-NH2	-12.21	114.19	120.30
2	M	450	ARG	NE-CZ-NH1	12.04	126.32	120.30
1	A	94	ARG	CD-NE-CZ	11.97	140.37	123.60
2	N	414	ARG	NE-CZ-NH1	11.93	126.26	120.30
1	B	184	ARG	NE-CZ-NH2	-11.85	114.38	120.30
2	Q	457	ARG	NE-CZ-NH2	-11.39	114.60	120.30
2	N	457	ARG	NE-CZ-NH2	-11.21	114.69	120.30
2	O	383	ARG	NE-CZ-NH2	-11.21	114.70	120.30
1	F	133	ARG	CD-NE-CZ	11.13	139.19	123.60
1	A	133	ARG	NE-CZ-NH1	11.08	125.84	120.30
2	Q	428	ARG	NE-CZ-NH2	-11.07	114.76	120.30
2	O	457	ARG	NE-CZ-NH1	11.05	125.83	120.30
2	M	428	ARG	NE-CZ-NH1	11.05	125.82	120.30
2	R	428	ARG	NE-CZ-NH2	-10.84	114.88	120.30
2	R	307	ARG	NE-CZ-NH1	10.82	125.71	120.30
2	P	428	ARG	NE-CZ-NH1	10.65	125.62	120.30
2	Q	522	ARG	NE-CZ-NH1	-10.54	115.03	120.30

Continued on next page...

Continued from previous page...

Mol	Chain	Res	Type	Atoms	Z	Observed(°)	Ideal(°)
2	M	313	ARG	NE-CZ-NH1	10.45	125.52	120.30
2	O	333	ARG	NE-CZ-NH2	-10.29	115.15	120.30
1	C	166	ARG	NE-CZ-NH1	10.24	125.42	120.30
1	C	166	ARG	NE-CZ-NH2	-10.17	115.22	120.30
2	M	428	ARG	NE-CZ-NH2	-10.05	115.27	120.30
2	O	330	ARG	NE-CZ-NH2	-10.01	115.30	120.30
2	R	457	ARG	NE-CZ-NH2	-9.96	115.32	120.30
2	P	428	ARG	NE-CZ-NH2	-9.91	115.34	120.30
1	F	38	ARG	NE-CZ-NH2	-9.88	115.36	120.30
1	F	38	ARG	NE-CZ-NH1	9.75	125.17	120.30
2	O	457	ARG	NE-CZ-NH2	-9.72	115.44	120.30
1	B	38	ARG	NE-CZ-NH2	-9.54	115.53	120.30
1	B	94	ARG	CG-CD-NE	9.53	131.81	111.80
1	B	94	ARG	NE-CZ-NH2	-9.49	115.55	120.30
1	B	78	GLU	OE1-CD-OE2	9.37	134.54	123.30
1	E	94	ARG	NE-CZ-NH1	9.29	124.95	120.30
1	B	166	ARG	NE-CZ-NH1	9.20	124.90	120.30
1	A	94	ARG	CG-CD-NE	9.12	130.95	111.80
2	P	313	ARG	NE-CZ-NH1	9.11	124.85	120.30
1	D	188	ARG	NE-CZ-NH1	9.10	124.85	120.30
1	A	38	ARG	NE-CZ-NH1	9.04	124.82	120.30
2	O	428	ARG	CD-NE-CZ	9.03	136.24	123.60
1	D	184	ARG	NE-CZ-NH1	9.02	124.81	120.30
2	R	428	ARG	NE-CZ-NH1	8.98	124.79	120.30
1	C	184	ARG	NE-CZ-NH1	8.96	124.78	120.30
1	E	174	ARG	NE-CZ-NH1	8.93	124.76	120.30
2	M	383	ARG	NE-CZ-NH2	-8.84	115.88	120.30
2	N	522	ARG	CD-NE-CZ	8.81	135.94	123.60
1	D	94	ARG	CG-CD-NE	8.58	129.82	111.80
1	C	186	ASP	CB-CG-OD1	8.55	125.99	118.30
2	P	428	ARG	CG-CD-NE	8.47	129.58	111.80
2	Q	407	ARG	NE-CZ-NH1	8.46	124.53	120.30
1	D	166	ARG	NE-CZ-NH2	-8.40	116.10	120.30
1	E	186	ASP	CB-CG-OD1	8.40	125.86	118.30
1	A	166	ARG	NE-CZ-NH1	8.38	124.49	120.30
1	D	166	ARG	NE-CZ-NH1	8.36	124.48	120.30
1	E	38	ARG	NE-CZ-NH2	-8.26	116.17	120.30
2	N	307	ARG	NE-CZ-NH1	8.24	124.42	120.30
1	F	142	ARG	NE-CZ-NH1	8.23	124.42	120.30
1	D	74	ASP	CB-CG-OD1	8.09	125.58	118.30
2	N	524	ASP	CB-CG-OD2	-8.08	111.02	118.30
2	O	353	HIS	CA-CB-CG	-8.08	99.87	113.60

Continued on next page...

Continued from previous page...

Mol	Chain	Res	Type	Atoms	Z	Observed(°)	Ideal(°)
1	A	174	ARG	NE-CZ-NH1	8.04	124.32	120.30
1	F	188	ARG	NE-CZ-NH2	-8.04	116.28	120.30
1	B	166	ARG	NE-CZ-NH2	-8.02	116.29	120.30
2	R	457	ARG	NE-CZ-NH1	8.02	124.31	120.30
1	F	57	ASP	CB-CG-OD2	-7.98	111.12	118.30
2	P	457	ARG	NE-CZ-NH1	7.97	124.28	120.30
2	N	414	ARG	NE-CZ-NH2	-7.96	116.32	120.30
1	E	38	ARG	NE-CZ-NH1	7.95	124.28	120.30
2	N	524	ASP	CB-CG-OD1	7.95	125.45	118.30
2	M	450	ARG	CD-NE-CZ	7.95	134.72	123.60
1	A	133	ARG	CD-NE-CZ	7.94	134.72	123.60
2	O	377	ARG	NE-CZ-NH1	7.93	124.27	120.30
2	N	440	ARG	NH1-CZ-NH2	7.80	127.98	119.40
2	M	414	ARG	NE-CZ-NH1	7.79	124.19	120.30
1	E	31	ARG	NE-CZ-NH1	7.75	124.18	120.30
2	R	524	ASP	CB-CG-OD1	7.69	125.22	118.30
2	R	383	ARG	NE-CZ-NH2	-7.64	116.48	120.30
2	N	383	ARG	NE-CZ-NH2	-7.62	116.49	120.30
1	D	133	ARG	NE-CZ-NH2	-7.61	116.50	120.30
2	P	432	ASP	CB-CG-OD1	7.58	125.12	118.30
2	R	407	ARG	NE-CZ-NH1	7.47	124.04	120.30
2	Q	377	ARG	NE-CZ-NH1	-7.46	116.57	120.30
2	M	428	ARG	CD-NE-CZ	7.44	134.02	123.60
2	Q	414	ARG	NE-CZ-NH1	7.44	124.02	120.30
1	A	174	ARG	NE-CZ-NH2	-7.44	116.58	120.30
2	N	311	ARG	NE-CZ-NH2	-7.41	116.59	120.30
2	N	457	ARG	NE-CZ-NH1	7.41	124.01	120.30
2	N	528	ARG	NE-CZ-NH2	-7.41	116.60	120.30
1	F	142	ARG	NE-CZ-NH2	-7.41	116.60	120.30
1	D	188	ARG	NE-CZ-NH2	-7.40	116.60	120.30
1	A	31	ARG	NE-CZ-NH2	-7.40	116.60	120.30
1	B	94	ARG	CB-CG-CD	7.36	130.74	111.60
2	Q	330	ARG	NE-CZ-NH1	7.36	123.98	120.30
2	Q	524	ASP	CB-CG-OD2	-7.33	111.70	118.30
1	D	186	ASP	CB-CG-OD1	7.30	124.87	118.30
2	Q	330	ARG	NE-CZ-NH2	-7.30	116.65	120.30
2	R	528	ARG	NE-CZ-NH2	-7.30	116.65	120.30
1	D	94	ARG	CD-NE-CZ	7.29	133.80	123.60
1	A	64	ARG	NE-CZ-NH1	-7.28	116.66	120.30
2	Q	377	ARG	NE-CZ-NH2	7.27	123.94	120.30
2	Q	457	ARG	CD-NE-CZ	7.27	133.78	123.60
1	D	167	ARG	NE-CZ-NH1	7.23	123.92	120.30

Continued on next page...

Continued from previous page...

Mol	Chain	Res	Type	Atoms	Z	Observed(°)	Ideal(°)
1	A	188	ARG	NE-CZ-NH1	7.19	123.89	120.30
1	E	64	ARG	CD-NE-CZ	-7.18	113.54	123.60
1	D	186	ASP	CB-CG-OD2	-7.14	111.87	118.30
1	F	188	ARG	NE-CZ-NH1	7.13	123.86	120.30
2	N	333	ARG	NE-CZ-NH2	-7.09	116.75	120.30
1	B	186	ASP	CB-CG-OD1	7.08	124.67	118.30
1	C	142	ARG	NE-CZ-NH2	-7.06	116.77	120.30
2	R	434	ASP	CB-CG-OD1	-7.05	111.95	118.30
1	B	133	ARG	CD-NE-CZ	7.03	133.44	123.60
2	Q	304	ASP	CB-CG-OD1	7.03	124.62	118.30
1	D	64	ARG	NE-CZ-NH1	-6.98	116.81	120.30
2	P	307	ARG	NE-CZ-NH1	6.94	123.77	120.30
1	B	178	ASP	CB-CG-OD2	6.93	124.54	118.30
2	N	407	ARG	NE-CZ-NH1	6.93	123.77	120.30
2	R	414	ARG	NE-CZ-NH1	6.93	123.76	120.30
2	N	416	LEU	CB-CA-C	6.88	123.26	110.20
1	B	133	ARG	NE-CZ-NH2	-6.78	116.91	120.30
1	B	188	ARG	NE-CZ-NH1	6.76	123.68	120.30
1	A	38	ARG	NE-CZ-NH2	-6.75	116.92	120.30
1	B	31	ARG	NE-CZ-NH1	6.71	123.66	120.30
1	C	184	ARG	NE-CZ-NH2	-6.71	116.95	120.30
2	M	517	ASP	CB-CG-OD2	-6.71	112.27	118.30
2	M	307	ARG	NE-CZ-NH1	6.70	123.65	120.30
2	O	383	ARG	NH1-CZ-NH2	6.69	126.76	119.40
1	C	133	ARG	CD-NE-CZ	6.68	132.96	123.60
2	M	428	ARG	CG-CD-NE	6.68	125.82	111.80
2	R	457	ARG	CA-CB-CG	6.67	128.08	113.40
2	O	313	ARG	NE-CZ-NH2	-6.64	116.98	120.30
2	N	428	ARG	NE-CZ-NH1	6.62	123.61	120.30
1	D	31	ARG	NE-CZ-NH2	-6.61	117.00	120.30
2	R	361	HIS	CA-CB-CG	-6.61	102.37	113.60
1	E	94	ARG	NE-CZ-NH2	-6.60	117.00	120.30
1	D	65	ASP	CB-CG-OD1	6.59	124.23	118.30
1	A	94	ARG	CB-CG-CD	6.58	128.72	111.60
1	A	74	ASP	CB-CG-OD2	-6.56	112.40	118.30
2	P	457	ARG	CD-NE-CZ	6.56	132.78	123.60
1	A	74	ASP	CB-CG-OD1	6.55	124.20	118.30
2	N	330	ARG	NE-CZ-NH2	-6.51	117.04	120.30
2	R	333	ARG	NE-CZ-NH1	6.50	123.55	120.30
2	M	536	GLU	CA-C-O	6.49	133.72	120.10
2	Q	420	ASP	CB-CG-OD1	6.48	124.13	118.30
2	Q	440	ARG	NE-CZ-NH1	6.48	123.54	120.30

Continued on next page...

Continued from previous page...

Mol	Chain	Res	Type	Atoms	Z	Observed(°)	Ideal(°)
2	R	440	ARG	NH1-CZ-NH2	6.47	126.52	119.40
1	F	31	ARG	NE-CZ-NH1	6.44	123.52	120.30
1	D	64	ARG	CD-NE-CZ	-6.42	114.61	123.60
2	O	407	ARG	NE-CZ-NH1	6.42	123.51	120.30
2	P	524	ASP	CB-CG-OD2	-6.38	112.56	118.30
2	O	528	ARG	NE-CZ-NH2	-6.38	117.11	120.30
1	E	36	TRP	CB-CA-C	6.37	123.14	110.40
1	A	64	ARG	CD-NE-CZ	-6.36	114.69	123.60
1	F	133	ARG	NE-CZ-NH1	6.36	123.48	120.30
1	D	52	LEU	CB-CA-C	6.34	122.25	110.20
2	Q	312	ASP	CB-CG-OD1	6.34	124.01	118.30
1	F	166	ARG	NE-CZ-NH1	6.34	123.47	120.30
1	A	31	ARG	NE-CZ-NH1	6.33	123.46	120.30
1	B	94	ARG	CD-NE-CZ	6.31	132.44	123.60
2	M	524	ASP	CB-CG-OD1	6.31	123.98	118.30
2	R	524	ASP	CB-CG-OD2	-6.29	112.64	118.30
2	M	428	ARG	CB-CG-CD	6.27	127.91	111.60
2	R	531	ARG	NE-CZ-NH2	-6.27	117.17	120.30
1	B	38	ARG	NE-CZ-NH1	6.26	123.43	120.30
2	N	330	ARG	NE-CZ-NH1	6.24	123.42	120.30
1	A	57	ASP	CB-CG-OD2	-6.23	112.69	118.30
1	F	146	ASP	CB-CG-OD2	-6.23	112.69	118.30
2	R	509	ASP	CB-CG-OD1	6.20	123.88	118.30
2	O	450	ARG	NE-CZ-NH1	6.20	123.40	120.30
1	B	166	ARG	CD-NE-CZ	6.18	132.25	123.60
2	P	416	LEU	CA-CB-CG	6.17	129.49	115.30
2	P	414	ARG	NE-CZ-NH2	-6.17	117.22	120.30
1	B	38	ARG	CD-NE-CZ	6.16	132.23	123.60
2	M	377	ARG	NE-CZ-NH2	-6.15	117.22	120.30
2	N	428	ARG	CG-CD-NE	6.14	124.70	111.80
1	F	52	LEU	CB-CA-C	6.14	121.86	110.20
1	A	52	LEU	CA-CB-CG	6.12	129.37	115.30
1	C	52	LEU	CB-CA-C	6.09	121.78	110.20
2	O	409	ARG	NE-CZ-NH2	6.07	123.34	120.30
2	P	307	ARG	NE-CZ-NH2	-6.07	117.27	120.30
1	E	133	ARG	NE-CZ-NH2	-6.05	117.27	120.30
1	C	36	TRP	CB-CA-C	6.03	122.47	110.40
2	O	333	ARG	NE-CZ-NH1	6.03	123.31	120.30
2	P	434	ASP	CB-CG-OD2	-6.03	112.88	118.30
1	F	74	ASP	CB-CG-OD1	6.02	123.72	118.30
1	E	188	ARG	NE-CZ-NH1	6.01	123.31	120.30
2	Q	432	ASP	CB-CG-OD1	6.01	123.71	118.30

Continued on next page...

Continued from previous page...

Mol	Chain	Res	Type	Atoms	Z	Observed(°)	Ideal(°)
2	O	407	ARG	NE-CZ-NH2	-5.99	117.31	120.30
1	B	64	ARG	CD-NE-CZ	-5.95	115.27	123.60
1	B	184	ARG	NE-CZ-NH1	5.93	123.27	120.30
2	O	509	ASP	CB-CG-OD1	5.92	123.63	118.30
2	M	509	ASP	CB-CG-OD1	5.89	123.60	118.30
2	Q	524	ASP	CB-CG-OD1	5.89	123.60	118.30
1	E	188	ARG	NE-CZ-NH2	-5.88	117.36	120.30
2	P	324	TYR	CB-CG-CD2	-5.88	117.47	121.00
1	F	64	ARG	NE-CZ-NH1	-5.86	117.37	120.30
2	N	522	ARG	NE-CZ-NH1	5.86	123.23	120.30
1	E	64	ARG	NE-CZ-NH1	-5.85	117.37	120.30
1	F	38	ARG	CA-CB-CG	5.85	126.28	113.40
1	B	64	ARG	NE-CZ-NH1	-5.85	117.38	120.30
1	F	141	THR	CA-CB-CG2	5.84	120.58	112.40
1	B	31	ARG	NE-CZ-NH2	-5.83	117.38	120.30
2	Q	428	ARG	CD-NE-CZ	5.81	131.73	123.60
1	A	147	ASP	CB-CG-OD2	-5.80	113.08	118.30
2	P	386	ASP	CB-CG-OD2	5.80	123.52	118.30
2	R	330	ARG	NE-CZ-NH2	-5.80	117.40	120.30
2	P	353	HIS	CA-CB-CG	-5.80	103.74	113.60
1	C	188	ARG	NE-CZ-NH2	-5.78	117.41	120.30
1	A	52	LEU	CB-CA-C	5.78	121.19	110.20
2	N	438	SER	N-CA-CB	5.78	119.16	110.50
2	Q	333	ARG	NE-CZ-NH2	-5.77	117.41	120.30
1	F	158	LEU	CB-CA-C	5.76	121.15	110.20
1	C	158	LEU	CB-CA-C	5.76	121.14	110.20
2	Q	383	ARG	NE-CZ-NH2	-5.76	117.42	120.30
1	B	31	ARG	CD-NE-CZ	5.76	131.66	123.60
1	F	74	ASP	CB-CG-OD2	-5.75	113.13	118.30
1	C	38	ARG	CD-NE-CZ	-5.70	115.62	123.60
2	R	407	ARG	NE-CZ-NH2	-5.70	117.45	120.30
1	B	11	GLN	N-CA-CB	5.68	120.82	110.60
1	A	65	ASP	CB-CG-OD1	5.68	123.41	118.30
2	P	478	LEU	CA-CB-CG	5.66	128.31	115.30
1	E	52	LEU	CB-CA-C	5.65	120.94	110.20
1	A	184	ARG	NE-CZ-NH2	-5.65	117.47	120.30
2	O	440	ARG	NE-CZ-NH1	5.62	123.11	120.30
1	E	31	ARG	NE-CZ-NH2	-5.61	117.49	120.30
2	R	475	ILE	N-CA-CB	5.61	123.70	110.80
2	N	420	ASP	CB-CG-OD1	5.58	123.33	118.30
1	F	94	ARG	CD-NE-CZ	5.58	131.42	123.60
2	O	457	ARG	CD-NE-CZ	5.58	131.41	123.60

Continued on next page...

Continued from previous page...

Mol	Chain	Res	Type	Atoms	Z	Observed(°)	Ideal(°)
2	Q	360	ASP	CB-CG-OD2	-5.56	113.30	118.30
2	P	361	HIS	CA-CB-CG	-5.55	104.17	113.60
1	D	36	TRP	CB-CA-C	5.54	121.49	110.40
1	E	166	ARG	NE-CZ-NH2	-5.54	117.53	120.30
2	N	440	ARG	NE-CZ-NH1	5.53	123.07	120.30
1	A	23	LEU	CB-CA-C	5.53	120.70	110.20
2	M	323	ASP	CB-CG-OD2	-5.52	113.33	118.30
2	O	517	ASP	CB-CG-OD2	-5.51	113.34	118.30
1	C	85	LEU	CB-CA-C	5.48	120.62	110.20
1	C	57	ASP	CB-CG-OD1	5.47	123.23	118.30
2	R	509	ASP	CB-CG-OD2	-5.47	113.38	118.30
1	C	146	ASP	CB-CG-OD1	5.47	123.22	118.30
2	M	383	ARG	NH1-CZ-NH2	5.46	125.41	119.40
1	C	199	ASP	CB-CG-OD2	5.44	123.19	118.30
1	B	146	ASP	CB-CG-OD1	5.43	123.19	118.30
2	M	528	ARG	NE-CZ-NH2	-5.43	117.58	120.30
2	P	517	ASP	CB-CG-OD2	-5.43	113.41	118.30
2	Q	314	ASN	CB-CA-C	5.43	121.25	110.40
2	M	522	ARG	NE-CZ-NH2	5.42	123.01	120.30
1	F	52	LEU	CA-CB-CG	5.39	127.70	115.30
2	P	536	GLU	CA-C-O	5.39	131.42	120.10
1	B	36	TRP	CB-CA-C	5.38	121.16	110.40
2	N	457	ARG	CD-NE-CZ	5.37	131.12	123.60
1	E	166	ARG	NE-CZ-NH1	5.37	122.99	120.30
1	A	36	TRP	CB-CA-C	5.36	121.13	110.40
1	D	74	ASP	CB-CG-OD2	-5.36	113.47	118.30
2	N	509	ASP	CB-CG-OD1	5.36	123.12	118.30
1	E	86	GLU	CG-CD-OE1	5.34	128.99	118.30
2	P	428	ARG	CD-NE-CZ	5.34	131.08	123.60
2	N	440	ARG	CB-CG-CD	-5.32	97.77	111.60
2	O	447	TYR	CB-CG-CD2	-5.31	117.81	121.00
2	M	323	ASP	CB-CG-OD1	5.31	123.08	118.30
1	B	52	LEU	CB-CA-C	5.28	120.23	110.20
2	O	432	ASP	CB-CG-OD1	5.26	123.04	118.30
2	Q	311	ARG	NE-CZ-NH2	-5.26	117.67	120.30
2	O	452	GLY	N-CA-C	-5.25	99.97	113.10
1	B	78	GLU	CG-CD-OE2	-5.25	107.80	118.30
2	P	509	ASP	CB-CG-OD1	5.24	123.02	118.30
1	C	64	ARG	NE-CZ-NH1	-5.24	117.68	120.30
2	P	524	ASP	CB-CG-OD1	5.24	123.02	118.30
1	A	186	ASP	CB-CG-OD1	5.24	123.01	118.30
2	P	447	TYR	CB-CG-CD2	-5.24	117.86	121.00

Continued on next page...

Continued from previous page...

Mol	Chain	Res	Type	Atoms	Z	Observed(°)	Ideal(°)
2	M	441	THR	N-CA-CB	-5.23	100.36	110.30
1	B	188	ARG	NE-CZ-NH2	-5.23	117.69	120.30
2	P	457	ARG	CA-CB-CG	5.22	124.89	113.40
2	R	452	GLY	N-CA-C	-5.22	100.04	113.10
2	O	361	HIS	CA-CB-CG	-5.22	104.72	113.60
2	P	452	GLY	N-CA-C	-5.21	100.09	113.10
2	M	432	ASP	CB-CG-OD1	5.21	122.98	118.30
2	M	524	ASP	CB-CG-OD2	-5.20	113.62	118.30
1	D	94	ARG	CB-CG-CD	5.20	125.12	111.60
1	E	94	ARG	CG-CD-NE	5.19	122.71	111.80
1	A	147	ASP	CB-CG-OD1	5.19	122.97	118.30
1	D	23	LEU	CB-CA-C	5.18	120.05	110.20
1	C	11	GLN	N-CA-CB	5.18	119.93	110.60
2	O	416	LEU	CB-CA-C	5.17	120.02	110.20
2	R	353	HIS	CA-CB-CG	-5.17	104.81	113.60
1	E	140	HIS	CB-CA-C	-5.15	100.11	110.40
1	A	192	GLU	CA-CB-CG	5.13	124.69	113.40
2	P	312	ASP	CB-CG-OD1	5.13	122.92	118.30
1	C	65	ASP	CB-CG-OD1	5.13	122.92	118.30
1	D	78	GLU	CG-CD-OE2	-5.10	108.10	118.30
1	F	176	GLU	CG-CD-OE1	5.09	128.49	118.30
2	R	376	GLU	CG-CD-OE2	-5.08	108.14	118.30
1	D	38	ARG	CD-NE-CZ	-5.07	116.51	123.60
1	A	142	ARG	NE-CZ-NH2	-5.05	117.77	120.30
2	O	432	ASP	CB-CG-OD2	-5.05	113.75	118.30
2	P	428	ARG	CB-CG-CD	5.05	124.73	111.60
1	E	158	LEU	CB-CA-C	5.05	119.79	110.20
2	O	524	ASP	CB-CG-OD1	5.05	122.84	118.30
2	M	353	HIS	CA-CB-CG	-5.04	105.03	113.60
2	M	438	SER	N-CA-CB	5.04	118.06	110.50
2	Q	450	ARG	NE-CZ-NH2	5.02	122.81	120.30
1	F	65	ASP	CB-CG-OD1	5.02	122.82	118.30
1	A	57	ASP	CB-CG-OD1	5.02	122.81	118.30
1	D	38	ARG	NE-CZ-NH2	-5.01	117.79	120.30

There are no chirality outliers.

All (1) planarity outliers are listed below:

Mol	Chain	Res	Type	Group
1	F	184	ARG	Sidechain

5.2 Too-close contacts

In the following table, the Non-H and H(model) columns list the number of non-hydrogen atoms and hydrogen atoms in the chain respectively. The H(added) column lists the number of hydrogen atoms added and optimized by MolProbity. The Clashes column lists the number of clashes within the asymmetric unit, whereas Symm-Clashes lists symmetry-related clashes.

Mol	Chain	Non-H	H(model)	H(added)	Clashes	Symm-Clashes
1	A	1571	0	1499	41	0
1	B	1571	0	1499	42	0
1	C	1571	0	1499	47	0
1	D	1571	0	1499	49	0
1	E	1571	0	1499	50	0
1	F	1571	0	1499	61	0
2	M	1844	0	1796	59	0
2	N	1844	0	1796	29	0
2	O	1844	0	1796	52	0
2	P	1844	0	1796	48	0
2	Q	1844	0	1796	52	0
2	R	1844	0	1796	59	0
3	M	1	0	0	0	0
3	N	1	0	0	0	0
3	O	1	0	0	0	0
3	P	1	0	0	0	0
3	Q	1	0	0	0	0
3	R	1	0	0	0	0
4	M	20	0	10	3	0
4	N	20	0	10	1	0
4	O	20	0	9	2	0
4	P	20	0	9	2	0
4	Q	20	0	10	3	0
4	R	20	0	10	3	0
5	A	83	0	0	0	0
5	B	79	0	0	1	0
5	C	81	0	0	1	0
5	D	81	0	0	2	0
5	E	84	0	0	1	0
5	F	80	0	0	3	0
5	M	151	0	0	5	0
5	N	161	0	0	3	0
5	O	155	0	0	3	0
5	P	152	0	0	3	0
5	Q	153	0	0	6	0
5	R	156	0	0	5	0
All	All	22032	0	19828	554	0

The all-atom clashscore is defined as the number of clashes found per 1000 atoms (including hydrogen atoms). The all-atom clashscore for this structure is 14.

All (554) close contacts within the same asymmetric unit are listed below, sorted by their clash magnitude.

Atom-1	Atom-2	Interatomic distance (Å)	Clash overlap (Å)
1:E:165:GLN:H	1:E:165:GLN:NE2	1.26	1.33
1:E:165:GLN:HE21	1:E:165:GLN:N	1.27	1.31
1:F:64:ARG:NH1	1:F:100:ASP:O	1.84	1.10
1:D:64:ARG:NH1	1:D:100:ASP:O	1.85	1.09
2:R:447:TYR:OH	4:R:550:3HB:H4	1.55	1.06
1:C:41:LYS:HD2	1:C:88:ALA:HA	1.39	1.01
1:F:165:GLN:H	1:F:165:GLN:NE2	1.59	1.01
1:B:165:GLN:H	1:B:165:GLN:NE2	1.56	1.01
2:N:447:TYR:OH	4:N:550:3HB:H4	1.60	1.00
2:M:364:LEU:HD22	2:M:440:ARG:HD3	1.42	1.00
1:A:98:THR:HB	1:A:100:ASP:OD1	1.60	0.99
2:P:364:LEU:HD22	2:P:440:ARG:HD3	1.43	0.99
1:D:98:THR:OG1	1:D:102:GLY:N	1.95	0.98
1:C:64:ARG:NH1	1:C:100:ASP:O	1.98	0.96
2:R:361:HIS:H	2:R:361:HIS:CD2	1.81	0.93
1:D:165:GLN:H	1:D:165:GLN:HE21	1.11	0.93
2:M:390:LYS:HD2	5:M:640:HOH:O	1.70	0.92
2:R:497:ASN:ND2	2:R:499:GLU:H	1.68	0.91
1:C:163:GLN:HB3	1:C:165:GLN:NE2	1.84	0.91
1:E:64:ARG:HG2	1:E:64:ARG:HH11	1.33	0.91
1:E:98:THR:OG1	1:E:102:GLY:N	2.03	0.91
1:D:165:GLN:H	1:D:165:GLN:NE2	1.67	0.90
1:B:165:GLN:H	1:B:165:GLN:HE21	0.91	0.90
1:A:64:ARG:NH1	1:A:100:ASP:O	2.05	0.89
1:C:98:THR:OG1	1:C:102:GLY:N	2.05	0.88
1:A:78:GLU:HG2	2:M:301:PRO:CB	2.04	0.88
1:F:98:THR:OG1	1:F:102:GLY:N	2.04	0.87
1:B:165:GLN:HE21	1:B:165:GLN:N	1.71	0.87
2:R:361:HIS:H	2:R:361:HIS:HD2	1.18	0.87
1:A:98:THR:OG1	1:A:102:GLY:N	2.06	0.87
2:P:307:ARG:HG2	2:P:533:THR:HG22	1.57	0.87
2:R:497:ASN:HD22	2:R:499:GLU:H	1.20	0.87
1:E:64:ARG:HG2	1:E:64:ARG:NH1	1.91	0.85
1:A:163:GLN:HB3	1:A:165:GLN:NE2	1.92	0.85
2:M:447:TYR:OH	4:M:550:3HB:H4	1.77	0.84
1:C:98:THR:HB	1:C:100:ASP:OD1	1.78	0.83
1:E:64:ARG:NH1	1:E:100:ASP:O	2.11	0.82

Continued on next page...

Continued from previous page...

Atom-1	Atom-2	Interatomic distance (Å)	Clash overlap (Å)
1:C:165:GLN:NE2	1:C:165:GLN:H	1.77	0.82
1:F:168:GLU:HA	1:F:171:ILE:HD12	1.61	0.82
1:D:98:THR:HB	1:D:100:ASP:OD1	1.78	0.82
1:E:98:THR:HB	1:E:100:ASP:OD1	1.79	0.82
2:M:361:HIS:H	2:M:361:HIS:CD2	1.94	0.81
1:C:18:HIS:ND1	5:C:280:HOH:O	2.09	0.80
2:N:307:ARG:HG2	2:N:533:THR:HG22	1.64	0.80
1:B:176:GLU:HG3	1:B:180:LYS:O	1.82	0.80
1:B:98:THR:HB	1:B:100:ASP:OD1	1.81	0.80
2:P:361:HIS:H	2:P:361:HIS:CD2	2.01	0.79
2:O:361:HIS:H	2:O:361:HIS:CD2	2.02	0.77
2:O:497:ASN:HD22	2:O:499:GLU:H	1.32	0.77
2:O:390:LYS:HD2	5:O:650:HOH:O	1.85	0.77
1:F:98:THR:HB	1:F:100:ASP:OD1	1.85	0.76
1:B:67:PHE:HZ	1:B:94:ARG:HD2	1.49	0.76
2:Q:390:LYS:HD2	5:Q:1020:HOH:O	1.84	0.76
1:A:67:PHE:HZ	1:A:94:ARG:HD2	1.50	0.76
2:O:364:LEU:HD22	2:O:440:ARG:HD3	1.68	0.76
1:D:64:ARG:HH12	1:D:100:ASP:C	1.89	0.75
2:Q:361:HIS:CD2	2:Q:361:HIS:H	2.04	0.75
1:B:18:HIS:ND1	5:B:470:HOH:O	2.18	0.75
1:E:180:LYS:HG3	1:E:181:THR:N	1.99	0.74
2:Q:447:TYR:OH	4:Q:550:3HB:H4	1.86	0.74
1:D:153:ALA:HB3	1:D:154:LYS:HE3	1.69	0.74
2:P:447:TYR:OH	4:P:550:3HB:H4	1.85	0.74
2:M:361:HIS:H	2:M:361:HIS:HD2	1.36	0.74
1:F:176:GLU:OE2	1:F:179:GLY:HA2	1.88	0.73
1:A:78:GLU:HG2	2:M:301:PRO:HB2	1.70	0.73
1:D:18:HIS:ND1	5:D:942:HOH:O	2.20	0.73
2:O:497:ASN:ND2	2:O:499:GLU:H	1.87	0.73
2:R:324:TYR:OH	4:R:550:3HB:O1'	2.04	0.72
1:D:165:GLN:HE21	1:D:165:GLN:N	1.87	0.72
1:B:3:GLU:HA	1:B:3:GLU:OE1	1.89	0.72
1:C:163:GLN:HB3	1:C:165:GLN:HE22	1.54	0.72
2:Q:522:ARG:NH1	5:Q:1058:HOH:O	2.22	0.72
1:B:98:THR:OG1	1:B:102:GLY:N	2.22	0.72
1:A:163:GLN:HB3	1:A:165:GLN:HE21	1.53	0.71
2:M:497:ASN:ND2	2:M:499:GLU:H	1.86	0.71
1:D:67:PHE:HZ	1:D:94:ARG:HD2	1.56	0.71
2:P:361:HIS:H	2:P:361:HIS:HD2	1.37	0.71
1:A:67:PHE:CZ	1:A:94:ARG:HD2	2.25	0.71

Continued on next page...

Continued from previous page...

Atom-1	Atom-2	Interatomic distance (Å)	Clash overlap (Å)
2:N:390:LYS:HD3	5:N:649:HOH:O	1.91	0.70
1:B:176:GLU:HG2	1:B:179:GLY:HA2	1.72	0.70
1:C:177:VAL:O	1:C:180:LYS:HB3	1.92	0.70
1:A:176:GLU:HG3	1:A:180:LYS:O	1.92	0.69
1:F:165:GLN:H	1:F:165:GLN:HE21	1.41	0.69
1:A:78:GLU:HG2	2:M:301:PRO:HB3	1.74	0.69
2:P:313:ARG:O	2:P:318:LYS:HE3	1.91	0.69
1:F:18:HIS:CE1	1:F:99:PHE:HE1	2.11	0.69
1:F:100:ASP:OD1	1:F:100:ASP:N	2.24	0.69
2:M:307:ARG:HG2	2:M:533:THR:HG22	1.75	0.69
2:R:536:GLU:HB2	5:R:1337:HOH:O	1.92	0.69
2:O:390:LYS:HD3	5:O:729:HOH:O	1.93	0.68
1:E:18:HIS:ND1	5:E:282:HOH:O	2.27	0.68
2:Q:315:TRP:HZ2	2:Q:503:GLN:HE21	1.41	0.68
2:Q:324:TYR:OH	4:Q:550:3HB:O1'	2.07	0.68
1:D:177:VAL:O	1:D:180:LYS:HB3	1.94	0.67
1:C:99:PHE:CE2	2:O:411:LYS:HD2	2.29	0.67
2:R:361:HIS:CD2	2:R:361:HIS:N	2.54	0.67
2:Q:376:GLU:OE1	5:Q:1008:HOH:O	2.11	0.67
2:O:361:HIS:H	2:O:361:HIS:HD2	1.44	0.66
2:R:307:ARG:HG2	2:R:533:THR:HG22	1.77	0.66
1:C:100:ASP:OD1	1:C:100:ASP:N	2.29	0.66
2:M:315:TRP:HZ2	2:M:503:GLN:HE21	1.42	0.66
2:R:315:TRP:HZ2	2:R:503:GLN:NE2	1.94	0.66
2:M:390:LYS:HD3	5:M:716:HOH:O	1.96	0.65
1:D:67:PHE:CZ	1:D:94:ARG:HD2	2.31	0.65
2:R:307:ARG:CG	2:R:533:THR:HG22	2.26	0.65
2:R:497:ASN:HD21	2:R:499:GLU:HB2	1.62	0.65
1:B:67:PHE:CZ	1:B:94:ARG:HD2	2.30	0.65
1:A:176:GLU:OE2	1:A:179:GLY:HA2	1.96	0.65
2:N:361:HIS:CD2	2:N:361:HIS:H	2.15	0.65
2:N:497:ASN:HD22	2:N:499:GLU:H	1.45	0.65
1:B:64:ARG:NH1	1:B:100:ASP:O	2.30	0.64
1:E:67:PHE:HZ	1:E:94:ARG:HD2	1.62	0.64
1:E:98:THR:O	1:E:102:GLY:HA2	1.96	0.64
1:F:147:ASP:OD2	1:F:174:ARG:HD2	1.97	0.64
2:P:360:ASP:OD2	2:P:428:ARG:HD2	1.98	0.64
1:D:100:ASP:CG	1:D:101:ALA:H	2.01	0.64
2:M:377:ARG:CZ	2:P:416:LEU:HD21	2.28	0.63
2:M:497:ASN:HD22	2:M:499:GLU:H	1.43	0.63
2:P:376:GLU:OE1	5:P:645:HOH:O	2.15	0.63

Continued on next page...

Continued from previous page...

Atom-1	Atom-2	Interatomic distance (Å)	Clash overlap (Å)
1:F:49:ILE:HA	1:F:180:LYS:HE3	1.80	0.63
1:C:3:GLU:OE1	1:C:3:GLU:HA	1.99	0.62
1:E:31:ARG:NH1	2:Q:428:ARG:HG2	2.14	0.62
2:Q:411:LYS:O	2:Q:414:ARG:NH1	2.32	0.62
1:F:67:PHE:HZ	1:F:94:ARG:HD2	1.64	0.62
2:P:497:ASN:ND2	2:P:499:GLU:H	1.96	0.62
2:R:497:ASN:ND2	2:R:499:GLU:HB2	2.13	0.62
1:D:64:ARG:NH1	1:D:64:ARG:HG2	2.14	0.62
2:P:414:ARG:NE	2:P:414:ARG:HA	2.14	0.62
2:O:447:TYR:OH	4:O:550:3HB:H4	2.00	0.62
1:C:165:GLN:H	1:C:165:GLN:CD	2.00	0.62
1:F:177:VAL:O	1:F:180:LYS:HB3	2.00	0.62
2:P:497:ASN:HD22	2:P:499:GLU:H	1.47	0.62
1:C:131:PHE:O	1:C:132:ALA:HB2	2.00	0.61
1:A:100:ASP:CG	1:A:101:ALA:H	2.03	0.61
2:N:390:LYS:HE2	5:N:730:HOH:O	1.99	0.61
1:C:35:ILE:HG21	1:C:92:PHE:HE2	1.66	0.60
1:D:64:ARG:HG2	1:D:64:ARG:HH11	1.65	0.60
2:R:411:LYS:O	2:R:414:ARG:NH1	2.34	0.60
1:E:65:ASP:OD2	1:E:133:ARG:HD3	2.01	0.60
2:M:356:PHE:HD1	2:M:428:ARG:HD3	1.65	0.60
2:O:364:LEU:HD22	2:O:440:ARG:CD	2.31	0.60
2:Q:497:ASN:ND2	2:Q:499:GLU:H	2.00	0.60
1:E:64:ARG:HH11	1:E:64:ARG:CG	1.98	0.59
1:C:54:GLN:HG3	1:C:184:ARG:NH2	2.17	0.59
2:P:376:GLU:O	2:P:442:ILE:HA	2.03	0.59
2:M:354:LEU:HD23	2:M:356:PHE:CE1	2.37	0.59
2:Q:536:GLU:HB2	5:Q:1101:HOH:O	2.01	0.59
2:Q:465:ILE:HD12	2:Q:465:ILE:N	2.17	0.59
2:M:536:GLU:HB2	5:M:695:HOH:O	2.03	0.59
1:C:70:VAL:HG11	1:C:106:LEU:HD21	1.84	0.59
1:F:67:PHE:CZ	1:F:94:ARG:HD2	2.37	0.59
2:R:390:LYS:HD2	5:R:1256:HOH:O	2.01	0.59
1:B:33:GLN:HG2	1:B:85:LEU:HD12	1.82	0.59
1:A:165:GLN:CD	1:A:165:GLN:H	2.06	0.59
1:B:3:GLU:OE1	1:B:3:GLU:CA	2.49	0.59
2:R:405:GLY:HA3	5:R:1260:HOH:O	2.01	0.59
1:B:19:ILE:O	2:N:426:VAL:HG21	2.03	0.58
2:N:478:LEU:C	2:N:478:LEU:HD23	2.22	0.58
2:R:497:ASN:ND2	2:R:499:GLU:N	2.47	0.58
1:B:52:LEU:C	1:B:52:LEU:HD22	2.23	0.58

Continued on next page...

Continued from previous page...

Atom-1	Atom-2	Interatomic distance (Å)	Clash overlap (Å)
2:R:390:LYS:HD3	5:R:1374:HOH:O	2.03	0.58
2:Q:361:HIS:H	2:Q:361:HIS:HD2	1.52	0.58
2:Q:497:ASN:HD22	2:Q:498:PRO:N	2.00	0.58
2:R:497:ASN:HD22	2:R:497:ASN:C	2.05	0.58
1:B:168:GLU:HA	1:B:171:ILE:HD12	1.86	0.58
2:N:497:ASN:ND2	2:N:499:GLU:HB2	2.19	0.58
1:D:19:ILE:O	2:P:426:VAL:HG21	2.02	0.58
2:Q:364:LEU:HD22	2:Q:440:ARG:HD3	1.85	0.58
2:R:399:MET:HA	2:R:462:HIS:O	2.03	0.58
2:M:335:ALA:HB2	2:O:328:ILE:HD12	1.85	0.58
2:P:405:GLY:HA3	5:P:653:HOH:O	2.03	0.58
1:E:100:ASP:CG	1:E:101:ALA:H	2.07	0.58
2:Q:497:ASN:HD22	2:Q:497:ASN:C	2.07	0.58
2:R:356:PHE:HD1	2:R:428:ARG:HD3	1.68	0.58
1:F:176:GLU:OE2	1:F:179:GLY:CA	2.51	0.57
2:N:497:ASN:ND2	2:N:499:GLU:H	2.03	0.57
1:F:98:THR:O	1:F:102:GLY:HA2	2.03	0.57
1:A:65:ASP:OD2	1:A:133:ARG:HD3	2.03	0.57
2:Q:361:HIS:CG	2:Q:429:CME:HE3	2.40	0.57
2:R:497:ASN:HD22	2:R:499:GLU:N	1.96	0.57
2:P:489:CYS:O	2:P:493:LYS:HG3	2.04	0.57
1:E:110:LYS:NZ	1:E:147:ASP:OD1	2.38	0.57
2:Q:315:TRP:HZ2	2:Q:503:GLN:NE2	2.01	0.57
1:A:176:GLU:HA	1:A:180:LYS:O	2.05	0.57
2:M:364:LEU:HD22	2:M:440:ARG:CD	2.26	0.57
1:B:39:LEU:HD11	1:B:93:GLY:HA3	1.85	0.57
1:B:52:LEU:HD21	1:B:184:ARG:NH1	2.19	0.57
2:P:411:LYS:O	2:P:414:ARG:NH1	2.37	0.57
2:N:313:ARG:O	2:N:318:LYS:HE2	2.05	0.56
2:R:307:ARG:NE	2:R:536:GLU:OE2	2.38	0.56
1:B:50:LEU:O	1:B:182:ALA:HA	2.05	0.56
1:B:65:ASP:OD2	1:B:133:ARG:HD3	2.04	0.56
1:A:50:LEU:O	1:A:182:ALA:HA	2.04	0.56
1:D:61:HIS:ND1	1:E:163:GLN:HG3	2.20	0.56
1:D:153:ALA:CB	1:D:154:LYS:HE3	2.35	0.56
1:F:19:ILE:O	2:R:426:VAL:HG21	2.06	0.56
2:O:315:TRP:HZ2	2:O:503:GLN:HE21	1.53	0.56
2:M:315:TRP:HZ2	2:M:503:GLN:NE2	2.03	0.56
1:F:18:HIS:CE1	1:F:99:PHE:CE1	2.94	0.56
1:E:64:ARG:HH12	1:E:100:ASP:C	2.05	0.56
1:B:131:PHE:CD2	1:B:138:HIS:HB3	2.41	0.56

Continued on next page...

Continued from previous page...

Atom-1	Atom-2	Interatomic distance (Å)	Clash overlap (Å)
2:O:376:GLU:O	2:O:442:ILE:HA	2.05	0.56
1:F:165:GLN:H	1:F:165:GLN:CD	2.09	0.56
2:M:305:ASN:O	2:M:533:THR:HG23	2.06	0.55
2:M:324:TYR:OH	4:M:550:3HB:O1'	2.10	0.55
1:F:100:ASP:CG	1:F:101:ALA:H	2.09	0.55
1:D:18:HIS:CG	5:D:942:HOH:O	2.59	0.55
2:M:497:ASN:HD22	2:M:498:PRO:N	2.05	0.55
2:N:359:HIS:O	2:N:366:ASN:HB3	2.07	0.55
2:O:315:TRP:HZ2	2:O:503:GLN:NE2	2.04	0.55
2:M:522:ARG:NH1	5:M:662:HOH:O	2.39	0.54
2:N:383:ARG:HG3	2:N:436:TYR:CE1	2.42	0.54
2:P:315:TRP:HZ2	2:P:503:GLN:HE21	1.53	0.54
2:N:497:ASN:HD21	2:N:499:GLU:HB2	1.73	0.54
1:A:131:PHE:CD2	2:M:475:ILE:HD12	2.42	0.54
1:E:133:ARG:HG3	2:Q:326:THR:HG21	1.90	0.54
1:E:168:GLU:HA	1:E:171:ILE:HD12	1.89	0.54
2:Q:405:GLY:HA3	5:Q:1024:HOH:O	2.07	0.54
1:D:35:ILE:HG21	1:D:92:PHE:HE2	1.73	0.54
1:F:35:ILE:HG22	1:F:94:ARG:HG3	1.89	0.54
2:P:522:ARG:NH1	5:P:673:HOH:O	2.38	0.54
1:B:176:GLU:HG3	1:B:180:LYS:C	2.29	0.54
1:D:70:VAL:HG21	1:D:106:LEU:HD21	1.90	0.54
2:R:361:HIS:CG	2:R:429:CME:HE3	2.43	0.53
1:A:144:TYR:CE1	1:A:158:LEU:HD13	2.43	0.53
1:B:176:GLU:HG2	1:B:179:GLY:CA	2.36	0.53
2:M:416:LEU:C	2:M:416:LEU:HD23	2.29	0.53
1:C:100:ASP:CG	1:C:101:ALA:H	2.10	0.53
2:O:522:ARG:NH1	5:O:674:HOH:O	2.39	0.53
2:Q:447:TYR:HE1	4:Q:550:3HB:H5	1.73	0.53
2:M:361:HIS:CG	2:M:429:CME:HE3	2.44	0.53
1:D:64:ARG:CZ	1:D:100:ASP:O	2.55	0.53
2:M:478:LEU:HD23	2:M:478:LEU:C	2.29	0.52
1:B:98:THR:O	1:B:102:GLY:HA2	2.10	0.52
2:R:356:PHE:CD1	2:R:428:ARG:HD3	2.45	0.52
2:R:486:ILE:HB	2:R:487:PRO:HD3	1.92	0.52
2:O:361:HIS:CG	2:O:429:CME:HE3	2.44	0.52
1:F:168:GLU:HA	1:F:171:ILE:CD1	2.35	0.52
1:D:64:ARG:HH11	1:D:64:ARG:CG	2.22	0.52
2:P:359:HIS:O	2:P:366:ASN:HB3	2.09	0.52
2:M:361:HIS:ND1	2:M:429:CME:HE3	2.25	0.52
1:B:61:HIS:ND1	1:C:163:GLN:HG3	2.25	0.52

Continued on next page...

Continued from previous page...

Atom-1	Atom-2	Interatomic distance (Å)	Clash overlap (Å)
1:C:165:GLN:NE2	1:C:165:GLN:N	2.55	0.52
2:O:447:TYR:HB2	2:O:448:PRO:HD2	1.92	0.52
1:F:31:ARG:NH1	2:R:428:ARG:HG2	2.25	0.52
1:A:78:GLU:CG	2:M:301:PRO:CB	2.85	0.52
2:O:497:ASN:HD22	2:O:497:ASN:C	2.13	0.52
1:F:155:CYS:O	1:F:159:ASN:ND2	2.43	0.51
2:R:400:TRP:HA	2:R:425:GLY:O	2.10	0.51
2:O:410:HIS:CE1	2:O:412:ASN:H	2.29	0.51
2:M:359:HIS:O	2:M:366:ASN:HB3	2.10	0.51
1:C:52:LEU:CD2	1:C:184:ARG:NH1	2.73	0.51
2:Q:364:LEU:HD22	2:Q:440:ARG:CD	2.40	0.51
2:Q:376:GLU:O	2:Q:442:ILE:HA	2.10	0.51
1:B:143:LEU:C	1:B:143:LEU:HD23	2.31	0.51
1:D:155:CYS:HB3	1:D:158:LEU:HB2	1.92	0.51
2:R:306:SER:CB	2:R:530:GLN:HE21	2.22	0.51
2:R:497:ASN:HD22	2:R:498:PRO:N	2.08	0.51
1:B:100:ASP:OD1	1:B:100:ASP:N	2.42	0.51
2:N:361:HIS:H	2:N:361:HIS:HD2	1.58	0.51
2:P:497:ASN:HD22	2:P:498:PRO:N	2.09	0.51
1:E:176:GLU:OE2	1:E:179:GLY:HA2	2.11	0.51
1:B:163:GLN:HB3	1:B:165:GLN:NE2	2.26	0.51
1:C:54:GLN:HG3	1:C:184:ARG:HH22	1.76	0.51
1:F:163:GLN:HB3	1:F:165:GLN:NE2	2.25	0.50
1:F:176:GLU:OE2	1:F:179:GLY:C	2.50	0.50
2:N:307:ARG:CG	2:N:533:THR:HG22	2.38	0.50
1:E:67:PHE:CZ	1:E:94:ARG:HD2	2.44	0.50
2:P:497:ASN:ND2	2:P:499:GLU:HB2	2.27	0.50
1:E:39:LEU:CD1	1:E:106:LEU:HD11	2.42	0.50
2:O:363:LEU:HD23	2:O:425:GLY:HA2	1.94	0.50
1:D:100:ASP:OD1	1:D:100:ASP:N	2.36	0.50
1:D:168:GLU:HA	1:D:171:ILE:HD12	1.93	0.50
2:Q:386:ASP:HA	2:Q:527:LEU:O	2.11	0.50
1:F:131:PHE:O	1:F:132:ALA:HB2	2.12	0.50
1:C:98:THR:O	1:C:102:GLY:HA2	2.10	0.50
2:N:414:ARG:NE	2:N:414:ARG:HA	2.27	0.50
2:O:308:PHE:CE1	2:O:530:GLN:HB2	2.46	0.50
2:P:410:HIS:ND1	2:P:411:LYS:N	2.60	0.49
2:M:314:ASN:OD1	2:M:318:LYS:HE2	2.11	0.49
2:Q:416:LEU:HD23	2:Q:416:LEU:C	2.33	0.49
2:M:448:PRO:HB2	2:P:516:MET:HA	1.94	0.49
1:D:18:HIS:CE1	1:D:99:PHE:HE1	2.31	0.49

Continued on next page...

Continued from previous page...

Atom-1	Atom-2	Interatomic distance (Å)	Clash overlap (Å)
1:E:131:PHE:CD2	1:E:138:HIS:HB3	2.47	0.49
1:E:143:LEU:HD23	1:E:143:LEU:C	2.33	0.49
2:Q:400:TRP:HA	2:Q:425:GLY:O	2.12	0.49
2:P:497:ASN:HD22	2:P:497:ASN:C	2.15	0.49
1:F:115:ASN:HA	1:F:121:PRO:HA	1.94	0.49
1:F:17:VAL:CG2	1:F:21:LEU:HD12	2.43	0.49
1:F:184:ARG:NH1	1:F:184:ARG:HG3	2.27	0.49
1:C:161:ILE:HD13	1:C:196:VAL:HG21	1.94	0.49
1:E:167:ARG:O	1:E:171:ILE:HD12	2.13	0.49
2:R:359:HIS:O	2:R:366:ASN:HB3	2.13	0.49
2:O:324:TYR:OH	4:O:550:3HB:O1'	2.09	0.48
2:O:497:ASN:ND2	2:O:499:GLU:HB2	2.28	0.48
1:D:28:ASN:HB3	1:D:29:PRO:HD2	1.95	0.48
1:D:51:LEU:O	1:D:105:THR:HA	2.13	0.48
1:D:163:GLN:HG3	1:F:61:HIS:ND1	2.28	0.48
1:E:61:HIS:ND1	1:F:163:GLN:HG3	2.28	0.48
2:M:495:ILE:HG21	2:M:500:ALA:HB3	1.95	0.48
2:M:363:LEU:HD23	2:M:425:GLY:HA2	1.95	0.48
1:B:177:VAL:O	1:B:180:LYS:HB3	2.14	0.48
2:N:399:MET:HA	2:N:462:HIS:O	2.13	0.48
1:E:131:PHE:CE2	1:E:138:HIS:HB3	2.48	0.48
1:F:165:GLN:NE2	1:F:165:GLN:N	2.43	0.48
2:M:400:TRP:HA	2:M:425:GLY:O	2.13	0.48
2:O:484:PRO:O	2:O:487:PRO:HD2	2.14	0.48
2:R:416:LEU:HD23	2:R:417:ALA:N	2.29	0.48
2:R:315:TRP:HZ2	2:R:503:GLN:HE21	1.61	0.48
2:M:448:PRO:CB	2:P:516:MET:HA	2.44	0.48
2:P:356:PHE:CD1	2:P:428:ARG:HD3	2.48	0.48
2:M:497:ASN:HD22	2:M:497:ASN:C	2.17	0.48
2:N:315:TRP:HZ2	2:N:503:GLN:HE21	1.62	0.48
2:M:495:ILE:CG2	2:M:500:ALA:HB3	2.44	0.48
1:C:163:GLN:HB3	1:C:165:GLN:HE21	1.72	0.48
2:M:315:TRP:CZ2	2:M:503:GLN:NE2	2.81	0.47
2:M:356:PHE:CD1	2:M:428:ARG:HD3	2.48	0.47
1:F:18:HIS:CG	5:F:1414:HOH:O	2.66	0.47
1:E:113:VAL:HG13	1:E:122:MET:O	2.13	0.47
2:Q:390:LYS:HA	2:Q:391:PRO:HD3	1.80	0.47
2:R:372:LEU:HD12	2:R:372:LEU:HA	1.79	0.47
2:N:400:TRP:HA	2:N:425:GLY:O	2.14	0.47
1:E:39:LEU:HD11	1:E:93:GLY:HA3	1.96	0.47
2:Q:489:CYS:HA	2:Q:490:PRO:HD3	1.72	0.47

Continued on next page...

Continued from previous page...

Atom-1	Atom-2	Interatomic distance (Å)	Clash overlap (Å)
1:D:52:LEU:C	1:D:52:LEU:HD22	2.35	0.47
1:F:84:ASN:OD1	1:F:86:GLU:HB2	2.13	0.47
1:F:176:GLU:CG	1:F:179:GLY:HA2	2.45	0.47
1:A:132:ALA:HB3	1:A:135:ILE:HD12	1.96	0.47
2:O:361:HIS:CD2	2:O:361:HIS:N	2.74	0.47
1:C:99:PHE:HE2	2:O:411:LYS:HD2	1.76	0.47
2:O:307:ARG:HG2	2:O:533:THR:HG22	1.95	0.47
1:D:36:TRP:CE3	1:D:36:TRP:HA	2.49	0.47
2:P:356:PHE:HD1	2:P:428:ARG:HD3	1.79	0.47
1:E:22:ALA:O	1:E:25:ALA:HB3	2.14	0.47
2:Q:315:TRP:CZ2	2:Q:503:GLN:NE2	2.82	0.47
1:F:64:ARG:HD3	1:F:99:PHE:O	2.15	0.47
1:D:50:LEU:O	1:D:182:ALA:HA	2.15	0.47
1:E:6:PRO:HB2	2:Q:503:GLN:HE22	1.79	0.47
1:E:176:GLU:HG2	1:E:179:GLY:HA2	1.96	0.47
1:F:163:GLN:HA	1:F:164:PRO:HD2	1.81	0.47
1:A:98:THR:O	1:A:102:GLY:HA2	2.15	0.46
2:M:446:PRO:HD2	2:P:376:GLU:HG2	1.96	0.46
1:C:50:LEU:O	1:C:182:ALA:HA	2.15	0.46
2:O:478:LEU:HD23	2:O:478:LEU:C	2.36	0.46
2:Q:429:CME:HE2	2:Q:438:SER:O	2.15	0.46
1:B:155:CYS:HB3	1:B:158:LEU:HB2	1.97	0.46
1:C:3:GLU:OE1	1:C:3:GLU:CA	2.63	0.46
1:E:120:VAL:HA	1:E:121:PRO:HD3	1.82	0.46
2:Q:364:LEU:HB2	2:Q:440:ARG:HD3	1.97	0.46
2:O:410:HIS:ND1	2:O:411:LYS:N	2.64	0.46
2:R:383:ARG:HG3	2:R:436:TYR:CE1	2.50	0.46
2:O:356:PHE:HD1	2:O:428:ARG:CD	2.28	0.46
2:Q:359:HIS:O	2:Q:366:ASN:HB3	2.15	0.46
2:Q:408:TYR:HE1	2:Q:447:TYR:CZ	2.34	0.46
1:A:64:ARG:HD3	1:A:99:PHE:O	2.16	0.46
2:M:307:ARG:HD2	5:M:652:HOH:O	2.16	0.46
1:C:131:PHE:CD2	1:C:138:HIS:HB3	2.49	0.46
1:F:131:PHE:CE2	1:F:138:HIS:HB3	2.51	0.46
1:A:163:GLN:OE1	1:A:165:GLN:NE2	2.44	0.46
1:C:143:LEU:HD23	1:C:143:LEU:C	2.36	0.46
2:Q:408:TYR:HE1	2:Q:447:TYR:CE2	2.34	0.46
1:A:28:ASN:HB3	1:A:29:PRO:HD2	1.97	0.46
2:O:356:PHE:HD1	2:O:428:ARG:HD2	1.81	0.46
2:O:486:ILE:HB	2:O:487:PRO:HD3	1.98	0.46
2:Q:399:MET:HA	2:Q:462:HIS:O	2.16	0.46

Continued on next page...

Continued from previous page...

Atom-1	Atom-2	Interatomic distance (Å)	Clash overlap (Å)
2:P:360:ASP:HB3	2:P:428:ARG:HG3	1.98	0.46
1:E:164:PRO:HD2	1:E:165:GLN:HE22	1.80	0.46
1:F:38:ARG:HA	1:F:107:HIS:HB2	1.98	0.46
1:F:176:GLU:HA	1:F:180:LYS:O	2.16	0.46
1:A:6:PRO:HB2	2:M:503:GLN:HE22	1.81	0.45
2:N:361:HIS:CG	2:N:429:CME:HE3	2.51	0.45
2:N:448:PRO:HD3	2:N:456:TRP:CZ3	2.51	0.45
2:O:360:ASP:HB3	2:O:428:ARG:HG3	1.97	0.45
2:O:381:ALA:O	2:O:522:ARG:HA	2.16	0.45
2:O:420:ASP:HA	2:O:421:PRO:HD2	1.75	0.45
2:O:304:ASP:HB2	2:O:343:ILE:HB	1.99	0.45
1:E:4:LEU:HB3	2:Q:387:GLN:HB3	1.98	0.45
1:A:114:VAL:HG23	1:A:122:MET:HE2	1.98	0.45
2:R:465:ILE:N	2:R:465:ILE:HD12	2.30	0.45
1:A:165:GLN:NE2	1:A:165:GLN:H	2.15	0.45
2:M:447:TYR:HE1	4:M:550:3HB:H5	1.82	0.45
2:O:315:TRP:CZ2	2:O:503:GLN:NE2	2.84	0.45
2:P:364:LEU:CD2	2:P:440:ARG:HD3	2.31	0.45
1:F:131:PHE:CD2	1:F:138:HIS:HB3	2.51	0.45
1:C:163:GLN:CB	1:C:165:GLN:HE22	2.26	0.45
1:E:164:PRO:N	1:E:165:GLN:NE2	2.65	0.45
1:C:35:ILE:HG21	1:C:92:PHE:CE2	2.49	0.45
1:C:155:CYS:O	1:C:159:ASN:ND2	2.49	0.45
1:D:70:VAL:HG11	1:D:106:LEU:HD21	1.99	0.45
1:C:19:ILE:HD13	1:C:19:ILE:HG21	1.74	0.45
1:D:131:PHE:CD2	1:D:138:HIS:HB3	2.52	0.45
1:F:78:GLU:HB2	1:F:80:GLN:HE21	1.82	0.45
1:C:64:ARG:NH1	1:C:64:ARG:HG2	2.32	0.44
1:D:63:VAL:HG12	1:D:66:SER:HB3	1.99	0.44
1:D:143:LEU:C	1:D:143:LEU:HD23	2.37	0.44
1:D:180:LYS:HG3	1:D:181:THR:N	2.30	0.44
2:P:400:TRP:HA	2:P:425:GLY:O	2.17	0.44
2:M:390:LYS:HA	2:M:391:PRO:HD3	1.87	0.44
1:C:66:SER:HA	1:C:132:ALA:HB2	1.99	0.44
2:P:315:TRP:HZ2	2:P:503:GLN:NE2	2.15	0.44
2:R:505:ILE:HG22	2:R:507:LYS:HE3	1.99	0.44
1:F:98:THR:HG1	1:F:103:GLU:H	1.65	0.44
1:C:52:LEU:HD21	1:C:184:ARG:NH1	2.32	0.44
2:P:489:CYS:HA	2:P:490:PRO:HD3	1.71	0.44
2:M:303:GLN:CB	2:M:305:ASN:ND2	2.81	0.44
2:O:416:LEU:C	2:O:416:LEU:HD23	2.38	0.44

Continued on next page...

Continued from previous page...

Atom-1	Atom-2	Interatomic distance (Å)	Clash overlap (Å)
1:F:74:ASP:HB2	5:F:1268:HOH:O	2.17	0.44
1:A:163:GLN:HA	1:A:164:PRO:HD2	1.80	0.44
1:F:114:VAL:HG23	1:F:122:MET:CE	2.47	0.44
2:R:415:TYR:CE1	2:R:416:LEU:HD22	2.52	0.44
2:R:497:ASN:HA	2:R:498:PRO:HD3	1.79	0.44
1:A:180:LYS:HG2	1:A:181:THR:N	2.33	0.44
2:M:360:ASP:OD2	2:M:428:ARG:HD2	2.18	0.44
1:B:131:PHE:CE2	1:B:138:HIS:HB3	2.52	0.44
2:O:489:CYS:HA	2:O:490:PRO:HD3	1.76	0.44
2:M:489:CYS:HA	2:M:490:PRO:HD3	1.74	0.44
2:P:307:ARG:HA	2:P:307:ARG:HD3	1.86	0.44
2:Q:385:VAL:O	2:Q:526:VAL:HA	2.17	0.44
1:A:4:LEU:HB3	2:M:387:GLN:HB3	1.98	0.44
1:B:18:HIS:CE1	1:B:99:PHE:HE1	2.36	0.44
2:N:360:ASP:O	2:N:427:GLY:HA2	2.18	0.44
1:C:18:HIS:CE1	1:C:99:PHE:HE1	2.35	0.44
1:C:48:HIS:HA	1:C:109:VAL:HG12	2.00	0.44
1:D:191:GLY:O	1:D:194:GLU:HB2	2.18	0.44
2:P:318:LYS:HA	2:P:318:LYS:HD3	1.55	0.44
2:P:483:ASP:HA	2:P:484:PRO:HD2	1.85	0.44
1:E:5:LEU:O	2:Q:387:GLN:HG2	2.17	0.44
1:E:8:THR:HA	1:E:9:PRO:HD3	1.85	0.44
1:F:143:LEU:C	1:F:143:LEU:HD23	2.37	0.44
2:R:315:TRP:CZ2	2:R:503:GLN:NE2	2.80	0.44
1:C:64:ARG:HG2	1:C:64:ARG:HH11	1.83	0.43
1:E:52:LEU:HA	1:E:104:TRP:O	2.18	0.43
2:R:410:HIS:ND1	2:R:411:LYS:N	2.66	0.43
1:B:52:LEU:C	1:B:52:LEU:CD2	2.86	0.43
1:C:4:LEU:HB3	2:O:387:GLN:HB3	2.00	0.43
2:O:356:PHE:CD1	2:O:428:ARG:HD3	2.52	0.43
2:R:432:ASP:OD1	2:R:432:ASP:C	2.55	0.43
2:P:447:TYR:HB2	2:P:448:PRO:HD2	2.00	0.43
2:R:489:CYS:HA	2:R:490:PRO:HD3	1.74	0.43
1:B:8:THR:HA	1:B:9:PRO:HD3	1.89	0.43
2:O:472:THR:HG22	2:O:528:ARG:HB2	2.00	0.43
1:D:131:PHE:CE2	1:D:138:HIS:HB3	2.53	0.43
2:P:324:TYR:OH	4:P:550:3HB:O1'	2.11	0.43
2:Q:497:ASN:HD22	2:Q:498:PRO:CD	2.32	0.43
1:A:131:PHE:CD2	1:A:138:HIS:HB3	2.53	0.43
1:F:19:ILE:HD13	1:F:19:ILE:HG21	1.79	0.43
1:F:41:LYS:HD2	1:F:88:ALA:HA	2.01	0.43

Continued on next page...

Continued from previous page...

Atom-1	Atom-2	Interatomic distance (Å)	Clash overlap (Å)
1:F:50:LEU:O	1:F:182:ALA:HA	2.19	0.43
2:R:431:THR:HG22	2:R:437:TYR:HB3	1.98	0.43
2:R:416:LEU:HD23	2:R:416:LEU:C	2.39	0.43
1:C:70:VAL:HG11	1:C:106:LEU:CD2	2.49	0.43
1:D:155:CYS:O	1:D:159:ASN:ND2	2.51	0.43
1:F:52:LEU:O	1:F:184:ARG:HA	2.18	0.43
2:P:326:THR:HG22	2:P:330:ARG:HD2	2.01	0.43
1:E:53:GLY:O	1:E:103:GLU:HG3	2.19	0.43
2:Q:497:ASN:ND2	2:Q:499:GLU:OE1	2.44	0.43
2:R:447:TYR:HE1	4:R:550:3HB:H5	1.82	0.43
2:O:497:ASN:HD22	2:O:498:PRO:N	2.16	0.43
2:P:497:ASN:HA	2:P:498:PRO:HD2	1.80	0.43
2:R:495:ILE:CG2	2:R:500:ALA:HB3	2.49	0.43
2:N:361:HIS:CD2	5:N:709:HOH:O	2.72	0.43
1:E:20:GLY:HA2	2:Q:426:VAL:HG13	2.00	0.43
1:D:35:ILE:HG21	1:D:92:PHE:CE2	2.52	0.42
1:E:70:VAL:HG12	1:E:128:ILE:HG12	2.00	0.42
2:R:415:TYR:CE1	2:R:416:LEU:CD2	3.02	0.42
2:M:448:PRO:HD3	2:M:456:TRP:CZ3	2.54	0.42
2:Q:486:ILE:N	2:Q:487:PRO:HD2	2.33	0.42
2:R:536:GLU:HG3	5:R:1229:HOH:O	2.18	0.42
2:Q:362:ASP:OD1	2:Q:364:LEU:HB2	2.19	0.42
2:R:361:HIS:ND1	2:R:429:CME:HE3	2.34	0.42
1:B:165:GLN:NE2	1:B:165:GLN:N	2.41	0.42
1:C:99:PHE:CD2	2:O:411:LYS:HD2	2.54	0.42
1:F:165:GLN:HE21	1:F:165:GLN:N	2.11	0.42
2:O:497:ASN:HA	2:O:498:PRO:HD2	1.62	0.42
1:A:98:THR:HB	1:A:100:ASP:CG	2.37	0.42
1:C:191:GLY:O	1:C:194:GLU:HB2	2.19	0.42
1:D:52:LEU:HA	1:D:104:TRP:O	2.19	0.42
1:E:100:ASP:OD1	1:E:100:ASP:N	2.38	0.42
1:E:176:GLU:HA	1:E:180:LYS:O	2.19	0.42
2:R:341:GLN:HB3	2:R:346:THR:CG2	2.50	0.42
1:C:168:GLU:HA	1:C:171:ILE:HD12	2.01	0.42
1:F:69:GLU:OE2	1:F:94:ARG:HD3	2.19	0.42
2:R:390:LYS:HA	2:R:391:PRO:HD3	1.93	0.42
1:A:35:ILE:HD13	2:M:351:PHE:CE1	2.55	0.42
1:B:176:GLU:HA	1:B:180:LYS:O	2.20	0.42
1:D:98:THR:O	1:D:102:GLY:HA2	2.20	0.42
1:E:98:THR:HG1	1:E:101:ALA:HB3	1.84	0.42
1:F:18:HIS:ND1	5:F:1414:HOH:O	2.37	0.42

Continued on next page...

Continued from previous page...

Atom-1	Atom-2	Interatomic distance (Å)	Clash overlap (Å)
2:R:306:SER:OG	2:R:530:GLN:NE2	2.49	0.42
2:R:468:PRO:HD2	2:R:472:THR:HG21	2.02	0.42
2:M:376:GLU:O	2:M:442:ILE:HA	2.20	0.42
2:M:447:TYR:HB2	2:M:448:PRO:HD2	2.02	0.42
1:B:161:ILE:HD13	1:B:196:VAL:HG21	2.02	0.42
2:N:376:GLU:O	2:N:442:ILE:HA	2.20	0.42
2:O:410:HIS:CE1	2:O:411:LYS:HG3	2.55	0.42
1:F:36:TRP:CG	1:F:37:ASN:N	2.88	0.42
1:F:47:GLU:O	1:F:49:ILE:HG23	2.20	0.42
1:F:114:VAL:HG23	1:F:122:MET:HE2	2.01	0.42
1:A:78:GLU:HB3	1:A:80:GLN:HE21	1.85	0.41
1:D:64:ARG:NH1	1:D:100:ASP:C	2.60	0.41
1:E:70:VAL:HG21	1:E:106:LEU:HD21	2.03	0.41
2:R:522:ARG:NE	2:R:524:ASP:OD1	2.53	0.41
2:P:381:ALA:O	2:P:522:ARG:HA	2.19	0.41
2:P:478:LEU:C	2:P:478:LEU:HD23	2.41	0.41
2:R:307:ARG:HG2	2:R:533:THR:CG2	2.49	0.41
1:A:19:ILE:HG21	2:M:410:HIS:HB2	2.02	0.41
2:R:363:LEU:N	2:R:363:LEU:HD12	2.36	0.41
2:M:385:VAL:O	2:M:526:VAL:HA	2.20	0.41
2:P:383:ARG:NH2	2:P:391:PRO:HG3	2.35	0.41
2:Q:390:LYS:HE2	5:Q:1138:HOH:O	2.21	0.41
2:O:364:LEU:HD11	2:O:442:ILE:HG23	2.03	0.41
2:P:399:MET:HA	2:P:462:HIS:O	2.21	0.41
2:M:497:ASN:ND2	2:M:499:GLU:HB2	2.35	0.41
2:N:390:LYS:HA	2:N:391:PRO:HD3	1.80	0.41
1:D:100:ASP:CG	1:D:101:ALA:N	2.70	0.41
2:Q:478:LEU:C	2:Q:478:LEU:HD23	2.40	0.41
1:F:8:THR:HA	1:F:9:PRO:HD3	1.87	0.41
1:B:162:GLU:O	1:B:164:PRO:HD3	2.21	0.41
2:N:420:ASP:HA	2:N:421:PRO:HD2	1.94	0.41
1:D:120:VAL:HA	1:D:121:PRO:HD3	1.83	0.41
1:E:165:GLN:NE2	1:E:165:GLN:N	2.11	0.41
2:Q:361:HIS:ND1	2:Q:429:CME:HE3	2.36	0.41
1:F:18:HIS:HE1	1:F:99:PHE:HE1	1.66	0.41
2:R:447:TYR:HB2	2:R:448:PRO:HD2	2.02	0.41
1:A:110:LYS:HG3	1:A:111:PRO:HD2	2.03	0.41
2:O:390:LYS:HA	2:O:391:PRO:HD3	1.88	0.41
1:E:199:ASP:O	2:Q:338:SER:HA	2.21	0.41
1:F:77:GLY:O	1:F:114:VAL:HG12	2.21	0.41
2:N:315:TRP:HZ2	2:N:503:GLN:NE2	2.18	0.41

Continued on next page...

Continued from previous page...

Atom-1	Atom-2	Interatomic distance (Å)	Clash overlap (Å)
1:C:131:PHE:O	1:C:132:ALA:CB	2.67	0.41
2:O:497:ASN:HD21	2:O:499:GLU:HB2	1.86	0.41
2:P:410:HIS:CE1	2:P:412:ASN:H	2.33	0.41
2:Q:316:HIS:HB3	2:Q:317:PRO:HD2	2.02	0.41
1:A:70:VAL:HG21	1:A:106:LEU:HD21	2.03	0.40
1:A:176:GLU:OE2	1:A:179:GLY:CA	2.68	0.40
1:B:115:ASN:HA	1:B:121:PRO:HA	2.03	0.40
1:B:140:HIS:O	1:B:197:PHE:HA	2.20	0.40
2:N:372:LEU:HA	2:N:373:PRO:HD3	1.94	0.40
1:C:120:VAL:HA	1:C:121:PRO:HD3	1.78	0.40
2:O:359:HIS:O	2:O:366:ASN:HB3	2.21	0.40
2:M:377:ARG:NE	2:P:416:LEU:HD21	2.35	0.40
1:D:35:ILE:HD13	2:P:351:PHE:CE1	2.57	0.40
1:E:50:LEU:O	1:E:182:ALA:HA	2.21	0.40
1:A:54:GLN:HG2	1:A:102:GLY:O	2.21	0.40
1:A:145:PHE:O	1:A:152:ASN:ND2	2.51	0.40
1:B:15:PRO:HB3	1:B:133:ARG:HD2	2.03	0.40
1:D:18:HIS:CE1	1:D:99:PHE:CE1	3.09	0.40
2:Q:483:ASP:HA	2:Q:484:PRO:HD2	1.80	0.40
1:F:52:LEU:CD2	1:F:184:ARG:NH1	2.84	0.40
2:M:361:HIS:CD2	2:M:361:HIS:N	2.68	0.40
2:Q:497:ASN:HD22	2:Q:499:GLU:H	1.66	0.40
2:O:410:HIS:ND1	2:O:412:ASN:N	2.56	0.40
2:O:413:ASP:C	2:O:414:ARG:HD2	2.41	0.40
2:Q:360:ASP:O	2:Q:427:GLY:HA2	2.22	0.40

There are no symmetry-related clashes.

5.3 Torsion angles ⓘ

5.3.1 Protein backbone ⓘ

In the following table, the Percentiles column shows the percent Ramachandran outliers of the chain as a percentile score with respect to all X-ray entries followed by that with respect to entries of similar resolution.

The Analysed column shows the number of residues for which the backbone conformation was analysed, and the total number of residues.

Mol	Chain	Analysed	Favoured	Allowed	Outliers	Percentiles	
1	A	198/200 (99%)	193 (98%)	5 (2%)	0	100	100

Continued on next page...

Continued from previous page...

Mol	Chain	Analysed	Favoured	Allowed	Outliers	Percentiles	
1	B	198/200 (99%)	192 (97%)	6 (3%)	0	100	100
1	C	198/200 (99%)	191 (96%)	7 (4%)	0	100	100
1	D	198/200 (99%)	189 (96%)	9 (4%)	0	100	100
1	E	198/200 (99%)	186 (94%)	12 (6%)	0	100	100
1	F	198/200 (99%)	189 (96%)	9 (4%)	0	100	100
2	M	228/238 (96%)	219 (96%)	9 (4%)	0	100	100
2	N	228/238 (96%)	220 (96%)	8 (4%)	0	100	100
2	O	228/238 (96%)	219 (96%)	9 (4%)	0	100	100
2	P	228/238 (96%)	221 (97%)	7 (3%)	0	100	100
2	Q	228/238 (96%)	222 (97%)	6 (3%)	0	100	100
2	R	228/238 (96%)	216 (95%)	12 (5%)	0	100	100
All	All	2556/2628 (97%)	2457 (96%)	99 (4%)	0	100	100

There are no Ramachandran outliers to report.

5.3.2 Protein sidechains ⓘ

In the following table, the Percentiles column shows the percent sidechain outliers of the chain as a percentile score with respect to all X-ray entries followed by that with respect to entries of similar resolution.

The Analysed column shows the number of residues for which the sidechain conformation was analysed, and the total number of residues.

Mol	Chain	Analysed	Rotameric	Outliers	Percentiles	
1	A	162/163 (99%)	155 (96%)	7 (4%)	25	32
1	B	162/163 (99%)	154 (95%)	8 (5%)	21	27
1	C	162/163 (99%)	156 (96%)	6 (4%)	29	39
1	D	162/163 (99%)	156 (96%)	6 (4%)	29	39
1	E	162/163 (99%)	153 (94%)	9 (6%)	17	21
1	F	162/163 (99%)	158 (98%)	4 (2%)	42	56
2	M	195/201 (97%)	183 (94%)	12 (6%)	15	18
2	N	195/201 (97%)	183 (94%)	12 (6%)	15	18
2	O	195/201 (97%)	185 (95%)	10 (5%)	20	25
2	P	195/201 (97%)	185 (95%)	10 (5%)	20	25

Continued on next page...

Continued from previous page...

Mol	Chain	Analysed	Rotameric	Outliers	Percentiles	
2	Q	195/201 (97%)	185 (95%)	10 (5%)	20	25
2	R	195/201 (97%)	184 (94%)	11 (6%)	17	21
All	All	2142/2184 (98%)	2037 (95%)	105 (5%)	21	27

All (105) residues with a non-rotameric sidechain are listed below:

Mol	Chain	Res	Type
1	A	4	LEU
1	A	19	ILE
1	A	38	ARG
1	A	43	ASP
1	A	52	LEU
1	A	133	ARG
1	A	165	GLN
2	M	301	PRO
2	M	372	LEU
2	M	395	THR
2	M	411	LYS
2	M	414	ARG
2	M	416	LEU
2	M	428	ARG
2	M	433	SER
2	M	434	ASP
2	M	440	ARG
2	M	497	ASN
2	M	507	LYS
1	B	4	LEU
1	B	19	ILE
1	B	32	ASP
1	B	38	ARG
1	B	52	LEU
1	B	158	LEU
1	B	165	GLN
1	B	176	GLU
2	N	364	LEU
2	N	372	LEU
2	N	395	THR
2	N	399	MET
2	N	411	LYS
2	N	416	LEU
2	N	428	ARG

Continued on next page...

Continued from previous page...

Mol	Chain	Res	Type
2	N	433	SER
2	N	442	ILE
2	N	497	ASN
2	N	507	LYS
2	N	534	HIS
1	C	4	LEU
1	C	19	ILE
1	C	38	ARG
1	C	52	LEU
1	C	164	PRO
1	C	165	GLN
2	O	372	LEU
2	O	393	PRO
2	O	395	THR
2	O	411	LYS
2	O	416	LEU
2	O	428	ARG
2	O	434	ASP
2	O	497	ASN
2	O	507	LYS
2	O	534	HIS
1	D	4	LEU
1	D	19	ILE
1	D	38	ARG
1	D	52	LEU
1	D	165	GLN
1	D	180	LYS
2	P	395	THR
2	P	411	LYS
2	P	414	ARG
2	P	416	LEU
2	P	428	ARG
2	P	433	SER
2	P	434	ASP
2	P	440	ARG
2	P	478	LEU
2	P	497	ASN
1	E	4	LEU
1	E	19	ILE
1	E	32	ASP
1	E	38	ARG
1	E	52	LEU

Continued on next page...

Continued from previous page...

Mol	Chain	Res	Type
1	E	133	ARG
1	E	150	GLN
1	E	165	GLN
1	E	180	LYS
2	Q	306	SER
2	Q	372	LEU
2	Q	395	THR
2	Q	399	MET
2	Q	416	LEU
2	Q	428	ARG
2	Q	433	SER
2	Q	497	ASN
2	Q	507	LYS
2	Q	534	HIS
1	F	4	LEU
1	F	19	ILE
1	F	52	LEU
1	F	165	GLN
2	R	306	SER
2	R	372	LEU
2	R	395	THR
2	R	416	LEU
2	R	428	ARG
2	R	433	SER
2	R	434	ASP
2	R	497	ASN
2	R	499	GLU
2	R	507	LYS
2	R	534	HIS

Sometimes sidechains can be flipped to improve hydrogen bonding and reduce clashes. All (31) such sidechains are listed below:

Mol	Chain	Res	Type
1	A	163	GLN
1	A	165	GLN
2	M	305	ASN
2	M	361	HIS
2	M	412	ASN
2	M	497	ASN
2	M	503	GLN
1	B	165	GLN
2	N	361	HIS

Continued on next page...

Continued from previous page...

Mol	Chain	Res	Type
2	N	412	ASN
2	N	497	ASN
2	N	503	GLN
1	C	165	GLN
2	O	361	HIS
2	O	497	ASN
2	O	503	GLN
1	D	165	GLN
2	P	361	HIS
2	P	412	ASN
2	P	497	ASN
2	P	503	GLN
1	E	165	GLN
2	Q	361	HIS
2	Q	412	ASN
2	Q	497	ASN
2	Q	503	GLN
1	F	165	GLN
2	R	361	HIS
2	R	497	ASN
2	R	503	GLN
2	R	530	GLN

5.3.3 RNA ⓘ

There are no RNA molecules in this entry.

5.4 Non-standard residues in protein, DNA, RNA chains ⓘ

6 non-standard protein/DNA/RNA residues are modelled in this entry.

In the following table, the Counts columns list the number of bonds (or angles) for which Mogul statistics could be retrieved, the number of bonds (or angles) that are observed in the model and the number of bonds (or angles) that are defined in the Chemical Component Dictionary. The Link column lists molecule types, if any, to which the group is linked. The Z score for a bond length (or angle) is the number of standard deviations the observed value is removed from the expected value. A bond length (or angle) with $|Z| > 2$ is considered an outlier worth inspection. RMSZ is the root-mean-square of all Z scores of the bond lengths (or angles).

Mol	Type	Chain	Res	Link	Bond lengths			Bond angles		
					Counts	RMSZ	$\# Z > 2$	Counts	RMSZ	$\# Z > 2$
2	CME	P	429	2	8,9,10	0.79	0	6,9,11	1.59	1 (16%)

Mol	Type	Chain	Res	Link	Bond lengths			Bond angles		
					Counts	RMSZ	# Z > 2	Counts	RMSZ	# Z > 2
2	CME	R	429	2	8,9,10	0.74	0	6,9,11	0.74	0
2	CME	Q	429	2	8,9,10	0.75	0	6,9,11	1.36	1 (16%)
2	CME	O	429	2	8,9,10	0.82	0	6,9,11	0.98	0
2	CME	N	429	2	8,9,10	0.52	0	6,9,11	0.58	0
2	CME	M	429	2	8,9,10	0.81	0	6,9,11	0.73	0

In the following table, the Chirals column lists the number of chiral outliers, the number of chiral centers analysed, the number of these observed in the model and the number defined in the Chemical Component Dictionary. Similar counts are reported in the Torsion and Rings columns. '-' means no outliers of that kind were identified.

Mol	Type	Chain	Res	Link	Chirals	Torsions	Rings
2	CME	P	429	2	-	1/5/8/10	-
2	CME	R	429	2	-	1/5/8/10	-
2	CME	Q	429	2	-	1/5/8/10	-
2	CME	O	429	2	-	1/5/8/10	-
2	CME	N	429	2	-	0/5/8/10	-
2	CME	M	429	2	-	1/5/8/10	-

There are no bond length outliers.

All (2) bond angle outliers are listed below:

Mol	Chain	Res	Type	Atoms	Z	Observed(°)	Ideal(°)
2	Q	429	CME	CZ-CE-SD	-2.74	104.21	113.39
2	P	429	CME	CB-SG-SD	2.56	110.49	103.86

There are no chirality outliers.

All (5) torsion outliers are listed below:

Mol	Chain	Res	Type	Atoms
2	Q	429	CME	CZ-CE-SD-SG
2	M	429	CME	CZ-CE-SD-SG
2	O	429	CME	CZ-CE-SD-SG
2	P	429	CME	CZ-CE-SD-SG
2	R	429	CME	CZ-CE-SD-SG

There are no ring outliers.

5 monomers are involved in 9 short contacts:

Mol	Chain	Res	Type	Clashes	Symm-Clashes
2	R	429	CME	2	0
2	Q	429	CME	3	0
2	O	429	CME	1	0
2	N	429	CME	1	0
2	M	429	CME	2	0

5.5 Carbohydrates [i](#)

There are no oligosaccharides in this entry.

5.6 Ligand geometry [i](#)

Of 18 ligands modelled in this entry, 6 are monoatomic - leaving 12 for Mogul analysis.

In the following table, the Counts columns list the number of bonds (or angles) for which Mogul statistics could be retrieved, the number of bonds (or angles) that are observed in the model and the number of bonds (or angles) that are defined in the Chemical Component Dictionary. The Link column lists molecule types, if any, to which the group is linked. The Z score for a bond length (or angle) is the number of standard deviations the observed value is removed from the expected value. A bond length (or angle) with $|Z| > 2$ is considered an outlier worth inspection. RMSZ is the root-mean-square of all Z scores of the bond lengths (or angles).

Mol	Type	Chain	Res	Link	Bond lengths			Bond angles		
					Counts	RMSZ	$\# Z > 2$	Counts	RMSZ	$\# Z > 2$
4	3HB	R	551	-	10,10,10	1.13	1 (10%)	13,13,13	1.03	2 (15%)
4	3HB	N	550	-	10,10,10	1.34	2 (20%)	13,13,13	1.24	2 (15%)
4	3HB	P	550	-	10,10,10	1.25	1 (10%)	13,13,13	1.19	2 (15%)
4	3HB	Q	551	-	10,10,10	1.24	1 (10%)	13,13,13	1.06	1 (7%)
4	3HB	R	550	-	10,10,10	1.38	2 (20%)	13,13,13	1.70	3 (23%)
4	3HB	M	551	-	10,10,10	1.23	1 (10%)	13,13,13	1.21	2 (15%)
4	3HB	P	551	-	10,10,10	1.29	1 (10%)	13,13,13	1.12	2 (15%)
4	3HB	M	550	-	10,10,10	1.37	2 (20%)	13,13,13	1.19	1 (7%)
4	3HB	O	551	-	10,10,10	1.21	1 (10%)	13,13,13	1.05	1 (7%)
4	3HB	O	550	-	10,10,10	1.36	2 (20%)	13,13,13	1.48	2 (15%)
4	3HB	N	551	-	10,10,10	1.24	1 (10%)	13,13,13	1.27	2 (15%)
4	3HB	Q	550	-	10,10,10	1.50	2 (20%)	13,13,13	1.65	2 (15%)

In the following table, the Chirals column lists the number of chiral outliers, the number of chiral centers analysed, the number of these observed in the model and the number defined in the Chemical Component Dictionary. Similar counts are reported in the Torsion and Rings columns.

'-' means no outliers of that kind were identified.

Mol	Type	Chain	Res	Link	Chirals	Torsions	Rings
4	3HB	R	551	-	-	0/4/4/4	0/1/1/1
4	3HB	N	550	-	-	0/4/4/4	0/1/1/1
4	3HB	P	550	-	-	0/4/4/4	0/1/1/1
4	3HB	Q	551	-	-	0/4/4/4	0/1/1/1
4	3HB	R	550	-	-	0/4/4/4	0/1/1/1
4	3HB	M	551	-	-	0/4/4/4	0/1/1/1
4	3HB	P	551	-	-	0/4/4/4	0/1/1/1
4	3HB	M	550	-	-	0/4/4/4	0/1/1/1
4	3HB	O	551	-	-	0/4/4/4	0/1/1/1
4	3HB	O	550	-	-	0/4/4/4	0/1/1/1
4	3HB	N	551	-	-	0/4/4/4	0/1/1/1
4	3HB	Q	550	-	-	0/4/4/4	0/1/1/1

All (17) bond length outliers are listed below:

Mol	Chain	Res	Type	Atoms	Z	Observed(Å)	Ideal(Å)
4	N	551	3HB	C1-C1'	2.82	1.55	1.49
4	Q	550	3HB	C2-C1	2.82	1.43	1.39
4	Q	551	3HB	C1-C1'	2.68	1.55	1.49
4	P	551	3HB	C1-C1'	2.67	1.55	1.49
4	R	551	3HB	C1-C1'	2.55	1.54	1.49
4	M	551	3HB	C1-C1'	2.47	1.54	1.49
4	O	550	3HB	O2'-C1'	-2.38	1.23	1.30
4	O	551	3HB	C1-C1'	2.37	1.54	1.49
4	R	550	3HB	C5-C4	2.36	1.42	1.38
4	O	550	3HB	C2-C1	2.34	1.43	1.39
4	M	550	3HB	C5-C4	2.31	1.42	1.38
4	P	550	3HB	C2-C1	2.20	1.42	1.39
4	Q	550	3HB	C1-C1'	2.13	1.54	1.49
4	N	550	3HB	C2-C1	2.05	1.42	1.39
4	M	550	3HB	C1-C1'	2.04	1.53	1.49
4	N	550	3HB	O2'-C1'	-2.03	1.24	1.30
4	R	550	3HB	O2'-C1'	-2.02	1.24	1.30

All (22) bond angle outliers are listed below:

Mol	Chain	Res	Type	Atoms	Z	Observed(°)	Ideal(°)
4	R	550	3HB	O2'-C1'-C1	3.64	124.19	114.84
4	O	550	3HB	O2'-C1'-C1	3.48	123.77	114.84
4	N	551	3HB	O2'-C1'-O1'	-3.39	116.06	123.35
4	M	551	3HB	O2'-C1'-O1'	-3.06	116.78	123.35

Continued on next page...

Continued from previous page...

Mol	Chain	Res	Type	Atoms	Z	Observed(°)	Ideal(°)
4	P	550	3HB	O2'-C1'-C1	2.94	122.38	114.84
4	M	550	3HB	O2'-C1'-C1	2.90	122.27	114.84
4	Q	550	3HB	O2'-C1'-C1	2.84	122.13	114.84
4	Q	550	3HB	C5-C6-C1	-2.78	117.64	120.36
4	M	551	3HB	O2'-C1'-C1	2.74	121.87	114.84
4	O	550	3HB	O2'-C1'-O1'	-2.70	117.54	123.35
4	P	551	3HB	O2'-C1'-O1'	-2.67	117.60	123.35
4	R	550	3HB	O2'-C1'-O1'	-2.59	117.78	123.35
4	N	551	3HB	O2'-C1'-C1	2.56	121.40	114.84
4	R	551	3HB	O2'-C1'-C1	2.48	121.21	114.84
4	P	550	3HB	O2'-C1'-O1'	-2.43	118.13	123.35
4	R	550	3HB	C5-C6-C1	-2.35	118.06	120.36
4	Q	551	3HB	O2'-C1'-C1	2.26	120.65	114.84
4	N	550	3HB	O2'-C1'-C1	2.26	120.65	114.84
4	O	551	3HB	O2'-C1'-O1'	-2.25	118.51	123.35
4	N	550	3HB	O2'-C1'-O1'	-2.16	118.72	123.35
4	P	551	3HB	O2'-C1'-C1	2.08	120.17	114.84
4	R	551	3HB	O2'-C1'-O1'	-2.02	119.00	123.35

There are no chirality outliers.

There are no torsion outliers.

There are no ring outliers.

6 monomers are involved in 14 short contacts:

Mol	Chain	Res	Type	Clashes	Symm-Clashes
4	N	550	3HB	1	0
4	P	550	3HB	2	0
4	R	550	3HB	3	0
4	M	550	3HB	3	0
4	O	550	3HB	2	0
4	Q	550	3HB	3	0

5.7 Other polymers [i](#)

There are no such residues in this entry.

5.8 Polymer linkage issues [i](#)

There are no chain breaks in this entry.

6 Fit of model and data

6.1 Protein, DNA and RNA chains

EDS was not executed - this section is therefore empty.

6.2 Non-standard residues in protein, DNA, RNA chains

EDS was not executed - this section is therefore empty.

6.3 Carbohydrates

EDS was not executed - this section is therefore empty.

6.4 Ligands

EDS was not executed - this section is therefore empty.

6.5 Other polymers

EDS was not executed - this section is therefore empty.