



wwPDB EM Validation Summary Report ⓘ

Jul 7, 2024 – 08:59 pm BST

PDB ID : 7P7K
EMDB ID : EMD-13238
Title : Complex I from E. coli, DDM/LMNG-purified, with DQ, Resting state
Authors : Kravchuk, V.; Kampjut, D.; Sazanov, L.
Deposited on : 2021-07-19
Resolution : 3.10 Å (reported)
Based on initial models : 3RKO, 4HEA

This is a wwPDB EM Validation Summary Report for a publicly released PDB entry.

We welcome your comments at validation@mail.wwpdb.org

A user guide is available at

<https://www.wwpdb.org/validation/2017/EMValidationReportHelp>
with specific help available everywhere you see the ⓘ symbol.

The types of validation reports are described at

<http://www.wwpdb.org/validation/2017/FAQs#types>.

The following versions of software and data (see [references ⓘ](#)) were used in the production of this report:

EMDB validation analysis : 0.0.1.dev92
Mogul : 1.8.4, CSD as541be (2020)
MolProbity : 4.02b-467
buster-report : 1.1.7 (2018)
Percentile statistics : 20191225.v01 (using entries in the PDB archive December 25th 2019)
MapQ : 1.9.13
Ideal geometry (proteins) : Engh & Huber (2001)
Ideal geometry (DNA, RNA) : Parkinson et al. (1996)
Validation Pipeline (wwPDB-VP) : 2.37.1

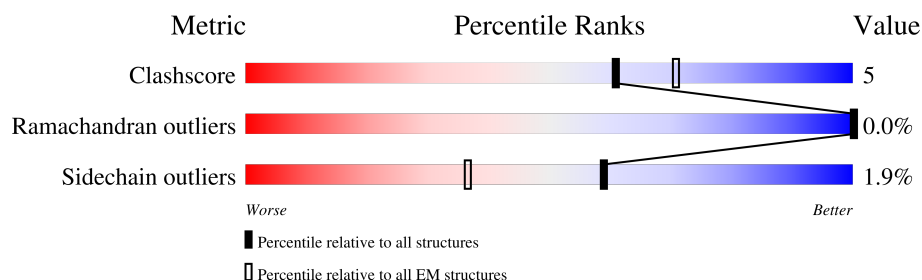
1 Overall quality at a glance

The following experimental techniques were used to determine the structure:

ELECTRON MICROSCOPY

The reported resolution of this entry is 3.10 Å.

Percentile scores (ranging between 0-100) for global validation metrics of the entry are shown in the following graphic. The table shows the number of entries on which the scores are based.



Metric	Whole archive (#Entries)	EM structures (#Entries)
Clashscore	158937	4297
Ramachandran outliers	154571	4023
Sidechain outliers	154315	3826

The table below summarises the geometric issues observed across the polymeric chains and their fit to the map. The red, orange, yellow and green segments of the bar indicate the fraction of residues that contain outliers for ≥ 3 , 2, 1 and 0 types of geometric quality criteria respectively. A grey segment represents the fraction of residues that are not modelled. The numeric value for each fraction is indicated below the corresponding segment, with a dot representing fractions $\leq 5\%$. The upper red bar (where present) indicates the fraction of residues that have poor fit to the EM map (all-atom inclusion $< 40\%$). The numeric value is given above the bar.

Mol	Chain	Length	Quality of chain
1	F	439	90% 10%
2	E	156	89% 10% .
3	G	905	86% 13% .
4	C	600	83% 11% 5%
5	B	220	62% 14% 24%
6	I	149	82% 18%
7	H	325	79% 13% 8%
8	A	147	60% 8% . 31%

Continued on next page...

Continued from previous page...

Mol	Chain	Length	Quality of chain
9	L	613	 87%9% ..
10	M	504	 86%13% .
11	N	485	 87%11% .
12	K	100	 86%12% .
13	J	162	 81%19% .

2 Entry composition

There are 19 unique types of molecules in this entry. The entry contains 36531 atoms, of which 0 are hydrogens and 0 are deuteriums.

In the tables below, the AltConf column contains the number of residues with at least one atom in alternate conformation and the Trace column contains the number of residues modelled with at most 2 atoms.

- Molecule 1 is a protein called NADH-quinone oxidoreductase subunit F.

Mol	Chain	Residues	Atoms					AltConf	Trace
1	F	439	Total	C	N	O	S	0	0
			3407	2162	596	629	20		

- Molecule 2 is a protein called NADH dehydrogenase I subunit E.

Mol	Chain	Residues	Atoms					AltConf	Trace
2	E	156	Total	C	N	O	S	0	0
			1220	768	215	229	8		

- Molecule 3 is a protein called NADH-quinone oxidoreductase.

Mol	Chain	Residues	Atoms					AltConf	Trace
3	G	905	Total	C	N	O	S	0	0
			7022	4388	1269	1328	37		

- Molecule 4 is a protein called NADH-quinone oxidoreductase subunit C/D.

Mol	Chain	Residues	Atoms					AltConf	Trace
4	C	568	Total	C	N	O	S	0	0
			4575	2934	796	823	22		

- Molecule 5 is a protein called NADH-quinone oxidoreductase subunit B.

Mol	Chain	Residues	Atoms					AltConf	Trace
5	B	168	Total	C	N	O	S	0	0
			1330	843	231	240	16		

- Molecule 6 is a protein called NADH-quinone oxidoreductase subunit I.

Mol	Chain	Residues	Atoms					AltConf	Trace
6	I	149	Total	C	N	O	S	0	0
			1185	752	196	224	13		

- Molecule 7 is a protein called NADH-quinone oxidoreductase subunit H.

Mol	Chain	Residues	Atoms					AltConf	Trace
7	H	300	Total	C	N	O	S	0	0
			2334	1572	361	383	18		

- Molecule 8 is a protein called NADH-quinone oxidoreductase subunit A.

Mol	Chain	Residues	Atoms					AltConf	Trace
8	A	102	Total	C	N	O	S	0	0
			808	555	124	125	4		

- Molecule 9 is a protein called Proton-translocating NADH-quinone oxidoreductase, chain L.

Mol	Chain	Residues	Atoms					AltConf	Trace
9	L	599	Total	C	N	O	S	0	0
			4548	3027	722	767	32		

- Molecule 10 is a protein called NADH dehydrogenase I subunit M.

Mol	Chain	Residues	Atoms					AltConf	Trace
10	M	504	Total	C	N	O	S	0	0
			3953	2661	617	646	29		

- Molecule 11 is a protein called NADH-quinone oxidoreductase subunit N.

Mol	Chain	Residues	Atoms					AltConf	Trace
11	N	478	Total	C	N	O	S	0	0
			3620	2418	571	611	20		

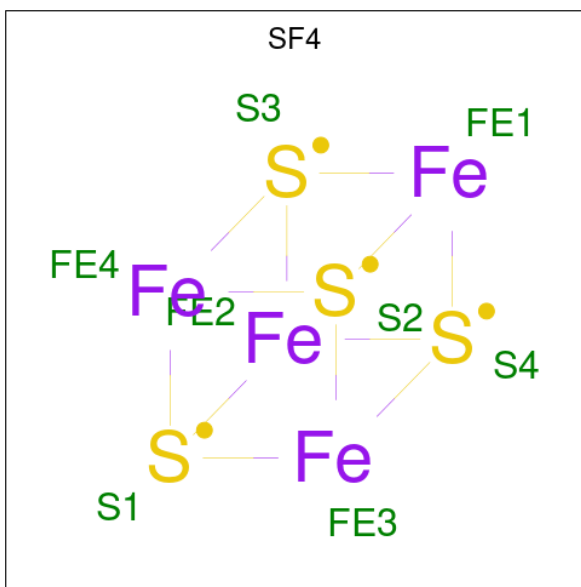
- Molecule 12 is a protein called NADH-quinone oxidoreductase subunit K.

Mol	Chain	Residues	Atoms					AltConf	Trace
12	K	100	Total	C	N	O	S	0	0
			760	494	132	129	5		

- Molecule 13 is a protein called NADH-quinone oxidoreductase subunit J.

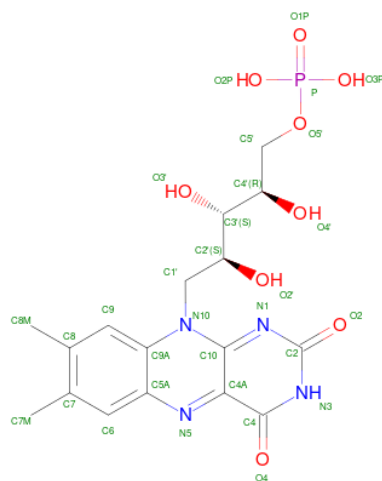
Mol	Chain	Residues	Atoms					AltConf	Trace
13	J	162	Total	C	N	O	S	0	0
			1210	815	187	201	7		

- Molecule 14 is IRON/SULFUR CLUSTER (three-letter code: SF4) (formula: Fe₄S₄).



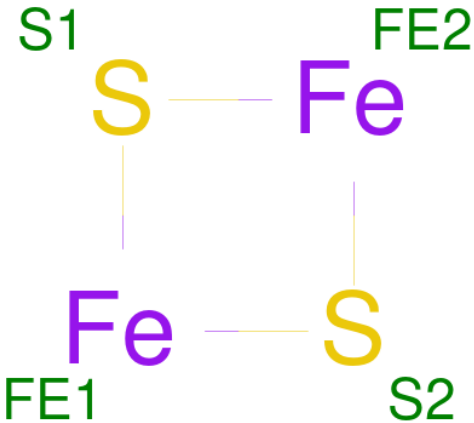
Mol	Chain	Residues	Atoms			AltConf
14	F	1	Total	Fe	S	0
			8	4	4	
14	G	1	Total	Fe	S	
			8	4	4	
14	G	1	Total	Fe	S	
			8	4	4	
14	G	1	Total	Fe	S	
			8	4	4	
14	B	1	Total	Fe	S	0
			8	4	4	
14	I	1	Total	Fe	S	
			8	4	4	
14	I	1	Total	Fe	S	
			8	4	4	

- Molecule 15 is FLAVIN MONONUCLEOTIDE (three-letter code: FMN) (formula: C₁₇H₂₁N₄O₉P).



Mol	Chain	Residues	Atoms					AltConf
15	F	1	Total	C	N	O	P	0
			31	17	4	9	1	

- Molecule 16 is FE2/S2 (INORGANIC) CLUSTER (three-letter code: FES) (formula: Fe_2S_2).

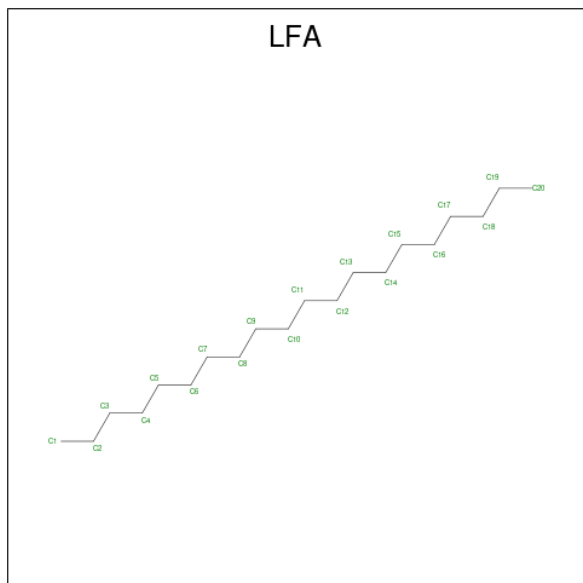


Mol	Chain	Residues	Atoms			AltConf
16	E	1	Total 4	Fe 2	S 2	0
16	G	1	Total 4	Fe 2	S 2	0

- Molecule 17 is CALCIUM ION (three-letter code: CA) (formula: Ca).

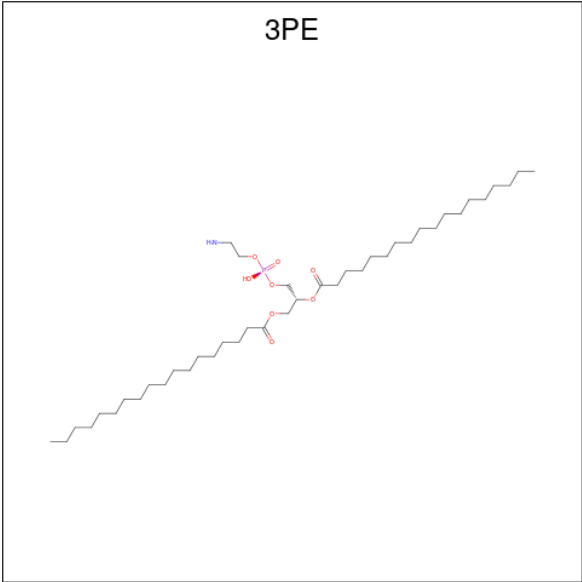
Mol	Chain	Residues	Atoms		AltConf
17	G	1	Total	Ca	0
			1	1	

- Molecule 18 is EICOSANE (three-letter code: LFA) (formula: $C_{20}H_{42}$).



Mol	Chain	Residues	Atoms		AltConf
18	H	1	Total	C	0
			20	20	
18	L	1	Total	C	0
			14	14	
18	N	1	Total	C	0
			20	20	
18	N	1	Total	C	0
			14	14	

- Molecule 19 is 1,2-Distearoyl-sn-glycerophosphoethanolamine (three-letter code: 3PE) (formula: $C_{41}H_{82}NO_8P$).

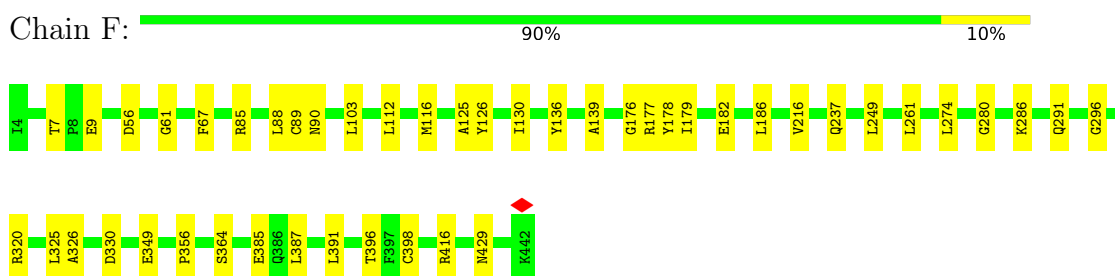


Mol	Chain	Residues	Atoms					AltConf
19	H	1	Total	C	N	O	P	0
			51	41	1	8	1	
19	A	1	Total	C	N	O	P	0
			46	36	1	8	1	
19	L	1	Total	C	N	O	P	0
			51	41	1	8	1	
19	L	1	Total	C	N	O	P	0
			43	33	1	8	1	
19	L	1	Total	C	N	O	P	0
			51	41	1	8	1	
19	M	1	Total	C	N	O	P	0
			51	41	1	8	1	
19	M	1	Total	C	N	O	P	0
			51	41	1	8	1	
19	M	1	Total	C	N	O	P	0
			51	41	1	8	1	

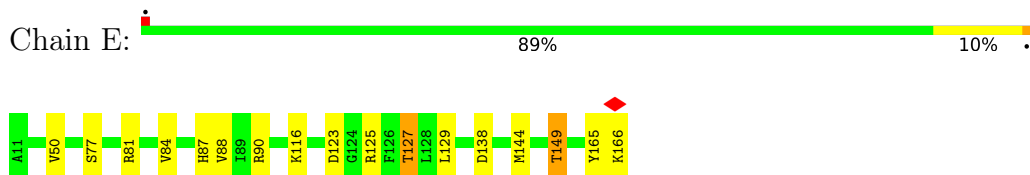
3 Residue-property plots

These plots are drawn for all protein, RNA, DNA and oligosaccharide chains in the entry. The first graphic for a chain summarises the proportions of the various outlier classes displayed in the second graphic. The second graphic shows the sequence view annotated by issues in geometry and atom inclusion in map density. Residues are color-coded according to the number of geometric quality criteria for which they contain at least one outlier: green = 0, yellow = 1, orange = 2 and red = 3 or more. A red diamond above a residue indicates a poor fit to the EM map for this residue (all-atom inclusion < 40%). Stretches of 2 or more consecutive residues without any outlier are shown as a green connector. Residues present in the sample, but not in the model, are shown in grey.

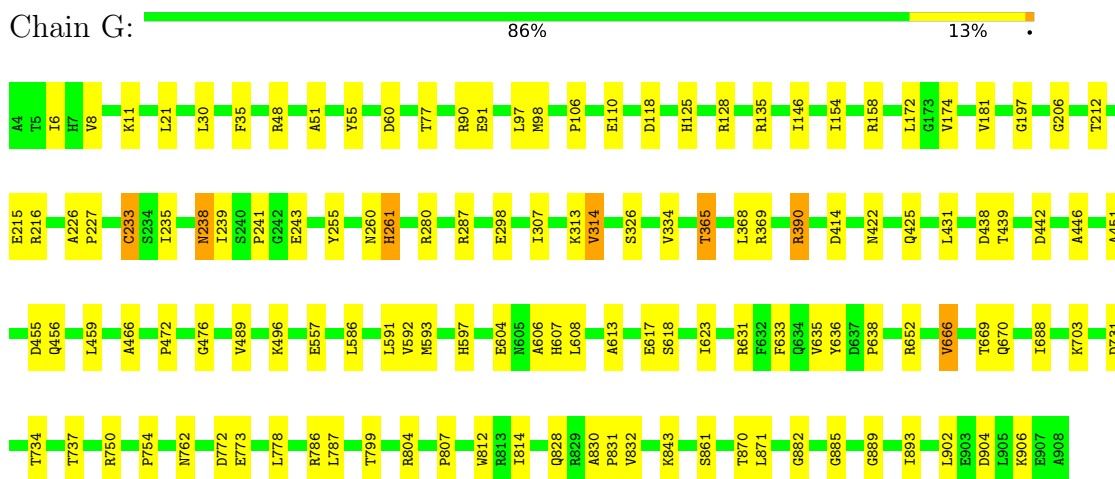
- Molecule 1: NADH-quinone oxidoreductase subunit F




- Molecule 2: NADH dehydrogenase I subunit E

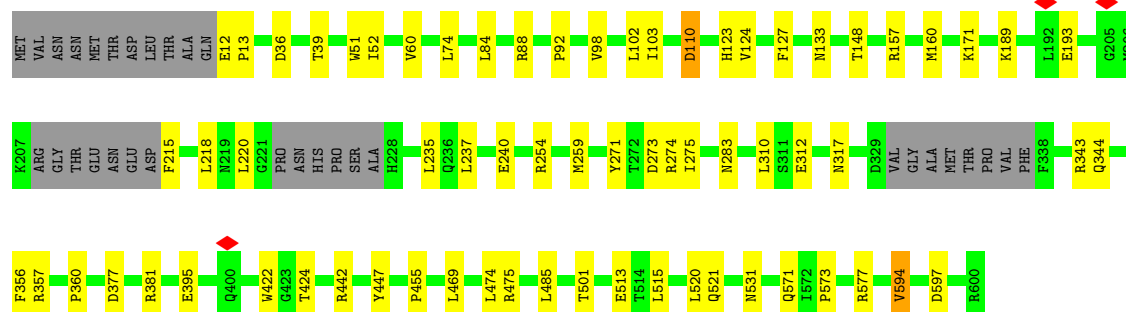


- Molecule 3: NADH-quinone oxidoreductase



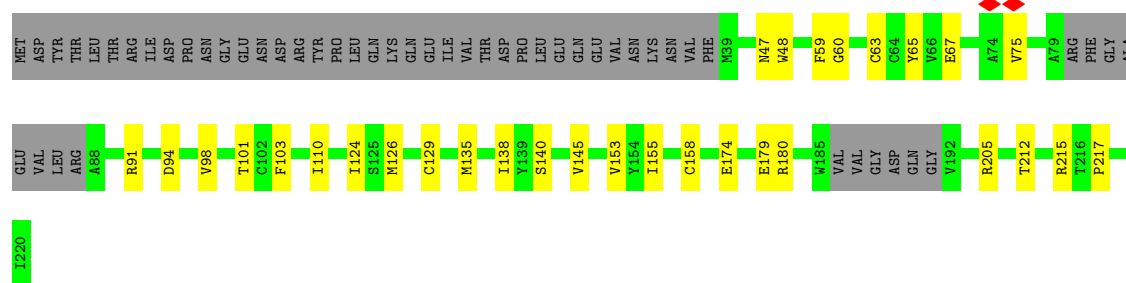
- Molecule 4: NADH-quinone oxidoreductase subunit C/D

Chain C: 




• Molecule 5: NADH-quinone oxidoreductase subunit B

Chain B: 




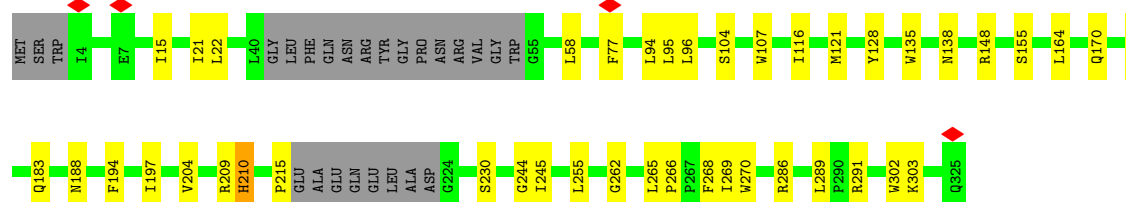
• Molecule 6: NADH-quinone oxidoreductase subunit I

Chain I: 



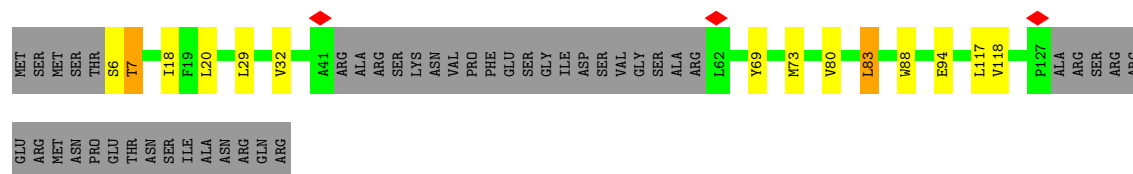
• Molecule 7: NADH-quinone oxidoreductase subunit H

Chain H: 



• Molecule 8: NADH-quinone oxidoreductase subunit A

Chain A: 



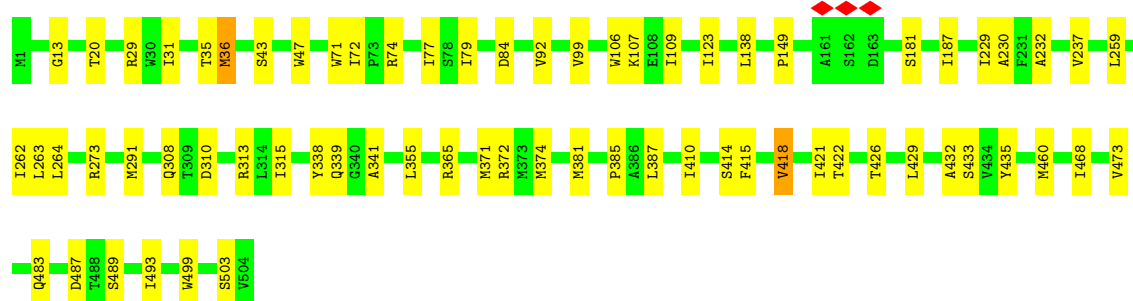
- Molecule 9: Proton-translocating NADH-quinone oxidoreductase, chain L

Chain L: 87% 9% ..



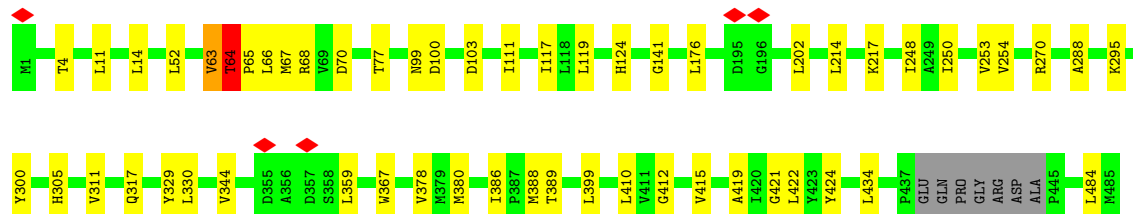
- Molecule 10: NADH dehydrogenase I subunit M

Chain M: 86% 13%



- Molecule 11: NADH-quinone oxidoreductase subunit N

Chain N: 87% 11%

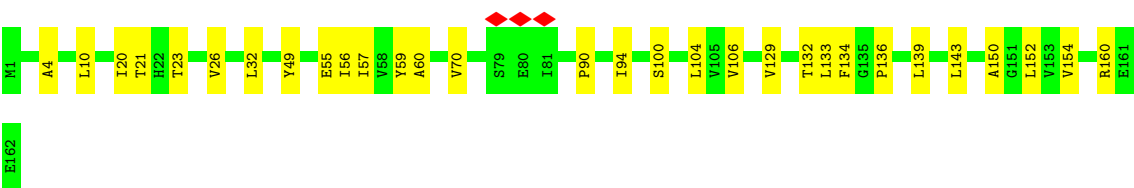
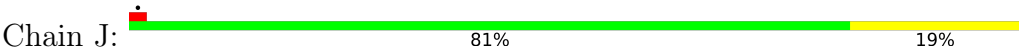


- Molecule 12: NADH-quinone oxidoreductase subunit K

Chain K: 86% 12%



• Molecule 13: NADH-quinone oxidoreductase subunit J



4 Experimental information

Property	Value	Source
EM reconstruction method	SINGLE PARTICLE	Depositor
Imposed symmetry	POINT, C1	Depositor
Number of particles used	66814	Depositor
Resolution determination method	FSC 0.143 CUT-OFF	Depositor
CTF correction method	PHASE FLIPPING AND AMPLITUDE CORRECTION	Depositor
Microscope	FEI TITAN KRIOS	Depositor
Voltage (kV)	300	Depositor
Electron dose ($e^-/\text{\AA}^2$)	78	Depositor
Minimum defocus (nm)	1000	Depositor
Maximum defocus (nm)	2000	Depositor
Magnification	81000	Depositor
Image detector	GATAN K3 (6k x 4k)	Depositor
Maximum map value	0.450	Depositor
Minimum map value	-0.012	Depositor
Average map value	0.005	Depositor
Map value standard deviation	0.019	Depositor
Recommended contour level	0.04	Depositor
Map size (Å)	151.57999, 203.51999, 248.04	wwPDB
Map dimensions	234, 192, 143	wwPDB
Map angles (°)	90.0, 90.0, 90.0	wwPDB
Pixel spacing (Å)	1.06, 1.06, 1.06	Depositor

5 Model quality

5.1 Standard geometry

Bond lengths and bond angles in the following residue types are not validated in this section: SF4, LFA, CA, FES, FMN, 3PE

The Z score for a bond length (or angle) is the number of standard deviations the observed value is removed from the expected value. A bond length (or angle) with $|Z| > 5$ is considered an outlier worth inspection. RMSZ is the root-mean-square of all Z scores of the bond lengths (or angles).

Mol	Chain	Bond lengths		Bond angles	
		RMSZ	# Z >5	RMSZ	# Z >5
1	F	0.32	0/3486	0.52	0/4713
2	E	0.31	0/1248	0.51	0/1691
3	G	0.38	0/7173	0.54	0/9726
4	C	0.34	0/4698	0.53	0/6374
5	B	0.32	0/1359	0.54	0/1838
6	I	0.40	0/1214	0.56	0/1642
7	H	0.32	0/2400	0.49	0/3265
8	A	0.31	0/833	0.50	0/1134
9	L	0.31	0/4663	0.48	1/6357 (0.0%)
10	M	0.33	0/4074	0.49	0/5546
11	N	0.33	0/3709	0.51	0/5061
12	K	0.31	0/769	0.51	0/1040
13	J	0.32	0/1236	0.47	0/1688
All	All	0.34	0/36862	0.51	1/50075 (0.0%)

Chiral center outliers are detected by calculating the chiral volume of a chiral center and verifying if the center is modelled as a planar moiety or with the opposite hand. A planarity outlier is detected by checking planarity of atoms in a peptide group, atoms in a mainchain group or atoms of a sidechain that are expected to be planar.

Mol	Chain	#Chirality outliers	#Planarity outliers
3	G	0	1
7	H	0	1
11	N	0	2
All	All	0	4

There are no bond length outliers.

All (1) bond angle outliers are listed below:

Mol	Chain	Res	Type	Atoms	Z	Observed(°)	Ideal(°)
9	L	455	LEU	CA-CB-CG	5.47	127.89	115.30

There are no chirality outliers.

All (4) planarity outliers are listed below:

Mol	Chain	Res	Type	Group
3	G	260	ASN	Peptide
7	H	210	HIS	Peptide
11	N	63	VAL	Peptide
11	N	64	THR	Peptide

5.2 Too-close contacts [i](#)

In the following table, the Non-H and H(model) columns list the number of non-hydrogen atoms and hydrogen atoms in the chain respectively. The H(added) column lists the number of hydrogen atoms added and optimized by MolProbity. The Clashes column lists the number of clashes within the asymmetric unit, whereas Symm-Clashes lists symmetry-related clashes.

Mol	Chain	Non-H	H(model)	H(added)	Clashes	Symm-Clashes
1	F	3407	0	3374	25	0
2	E	1220	0	1187	10	0
3	G	7022	0	6824	72	0
4	C	4575	0	4466	40	0
5	B	1330	0	1318	24	0
6	I	1185	0	1145	20	0
7	H	2334	0	2389	31	0
8	A	808	0	821	12	0
9	L	4548	0	4673	35	0
10	M	3953	0	4053	36	0
11	N	3620	0	3790	35	0
12	K	760	0	817	13	0
13	J	1210	0	1271	24	0
14	B	8	0	0	0	0
14	F	8	0	0	0	0
14	G	24	0	0	0	0
14	I	16	0	0	0	0
15	F	31	0	19	1	0
16	E	4	0	0	0	0
16	G	4	0	0	0	0
17	G	1	0	0	0	0
18	H	20	0	42	2	0
18	L	14	0	27	0	0

Continued on next page...

Continued from previous page...

Mol	Chain	Non-H	H(model)	H(added)	Clashes	Symm-Clashes
18	N	34	0	69	2	0
19	A	46	0	69	2	0
19	H	51	0	82	3	0
19	L	145	0	227	6	0
19	M	153	0	246	8	0
All	All	36531	0	36909	336	0

The all-atom clashscore is defined as the number of clashes found per 1000 atoms (including hydrogen atoms). The all-atom clashscore for this structure is 5.

The worst 5 of 336 close contacts within the same asymmetric unit are listed below, sorted by their clash magnitude.

Atom-1	Atom-2	Interatomic distance (Å)	Clash overlap (Å)
5:B:126:MET:HG2	5:B:155:ILE:HD12	1.68	0.74
11:N:63:VAL:O	11:N:67:MET:HB2	1.89	0.73
9:L:223:LEU:HD13	9:L:283:VAL:HG22	1.73	0.70
11:N:217:LYS:HB3	11:N:250:ILE:HD13	1.75	0.67
10:M:181:SER:HB2	10:M:230:ALA:HA	1.76	0.67

There are no symmetry-related clashes.

5.3 Torsion angles [i](#)

5.3.1 Protein backbone [i](#)

In the following table, the Percentiles column shows the percent Ramachandran outliers of the chain as a percentile score with respect to all PDB entries followed by that with respect to all EM entries.

The Analysed column shows the number of residues for which the backbone conformation was analysed, and the total number of residues.

Mol	Chain	Analysed	Favoured	Allowed	Outliers	Percentiles	
1	F	437/439 (100%)	430 (98%)	7 (2%)	0	100	100
2	E	154/156 (99%)	149 (97%)	5 (3%)	0	100	100
3	G	903/905 (100%)	871 (96%)	32 (4%)	0	100	100
4	C	560/600 (93%)	545 (97%)	15 (3%)	0	100	100
5	B	162/220 (74%)	158 (98%)	4 (2%)	0	100	100

Continued on next page...

Continued from previous page...

Mol	Chain	Analysed	Favoured	Allowed	Outliers	Percentiles	
6	I	147/149 (99%)	145 (99%)	2 (1%)	0	100	100
7	H	294/325 (90%)	286 (97%)	8 (3%)	0	100	100
8	A	98/147 (67%)	97 (99%)	1 (1%)	0	100	100
9	L	595/613 (97%)	581 (98%)	14 (2%)	0	100	100
10	M	502/504 (100%)	489 (97%)	13 (3%)	0	100	100
11	N	474/485 (98%)	462 (98%)	11 (2%)	1 (0%)	47	79
12	K	98/100 (98%)	96 (98%)	2 (2%)	0	100	100
13	J	160/162 (99%)	159 (99%)	1 (1%)	0	100	100
All	All	4584/4805 (95%)	4468 (98%)	115 (2%)	1 (0%)	100	100

All (1) Ramachandran outliers are listed below:

Mol	Chain	Res	Type
11	N	64	THR

5.3.2 Protein sidechains ⓘ

In the following table, the Percentiles column shows the percent sidechain outliers of the chain as a percentile score with respect to all PDB entries followed by that with respect to all EM entries.

The Analysed column shows the number of residues for which the sidechain conformation was analysed, and the total number of residues.

Mol	Chain	Analysed	Rotameric	Outliers	Percentiles	
1	F	353/353 (100%)	350 (99%)	3 (1%)	81	92
2	E	129/129 (100%)	126 (98%)	3 (2%)	50	77
3	G	732/732 (100%)	715 (98%)	17 (2%)	50	77
4	C	483/519 (93%)	475 (98%)	8 (2%)	60	83
5	B	145/192 (76%)	142 (98%)	3 (2%)	53	79
6	I	128/128 (100%)	125 (98%)	3 (2%)	50	77
7	H	246/269 (91%)	246 (100%)	0	100	100
8	A	80/119 (67%)	77 (96%)	3 (4%)	33	66
9	L	468/486 (96%)	459 (98%)	9 (2%)	57	81
10	M	413/413 (100%)	402 (97%)	11 (3%)	44	74

Continued on next page...

Continued from previous page...

Mol	Chain	Analysed	Rotameric	Outliers	Percentiles	
11	N	380/385 (99%)	376 (99%)	4 (1%)	73	89
12	K	79/79 (100%)	76 (96%)	3 (4%)	33	66
13	J	123/128 (96%)	119 (97%)	4 (3%)	38	69
All	All	3759/3932 (96%)	3688 (98%)	71 (2%)	59	81

5 of 71 residues with a non-rotameric sidechain are listed below:

Mol	Chain	Res	Type
10	M	418	VAL
10	M	429	LEU
12	K	56	THR
4	C	110	ASP
4	C	36	ASP

Sometimes sidechains can be flipped to improve hydrogen bonding and reduce clashes. All (2) such sidechains are listed below:

Mol	Chain	Res	Type
3	G	20	ASN
9	L	281	HIS

5.3.3 RNA [i](#)

There are no RNA molecules in this entry.

5.4 Non-standard residues in protein, DNA, RNA chains [i](#)

There are no non-standard protein/DNA/RNA residues in this entry.

5.5 Carbohydrates [i](#)

There are no monosaccharides in this entry.

5.6 Ligand geometry [i](#)

Of 23 ligands modelled in this entry, 1 is monoatomic - leaving 22 for Mogul analysis.

In the following table, the Counts columns list the number of bonds (or angles) for which Mogul statistics could be retrieved, the number of bonds (or angles) that are observed in the model and

the number of bonds (or angles) that are defined in the Chemical Component Dictionary. The Link column lists molecule types, if any, to which the group is linked. The Z score for a bond length (or angle) is the number of standard deviations the observed value is removed from the expected value. A bond length (or angle) with $|Z| > 2$ is considered an outlier worth inspection. RMSZ is the root-mean-square of all Z scores of the bond lengths (or angles).

Mol	Type	Chain	Res	Link	Bond lengths			Bond angles		
					Counts	RMSZ	# Z > 2	Counts	RMSZ	# Z > 2
14	SF4	F	501	1	0,12,12	-	-	-		
15	FMN	F	502	-	33,33,33	1.08	2 (6%)	48,50,50	1.26	7 (14%)
19	3PE	L	804	-	50,50,50	0.29	0	53,55,55	0.30	0
14	SF4	G	1001	3	0,12,12	-	-	-		
14	SF4	I	201	6	0,12,12	-	-	-		
18	LFA	L	802	-	13,13,19	0.17	0	12,12,18	0.16	0
16	FES	E	201	2	0,4,4	-	-	-		
19	3PE	M	1001	-	50,50,50	0.30	0	53,55,55	0.30	0
14	SF4	G	1002	3	0,12,12	-	-	-		
14	SF4	G	1003	3	0,12,12	-	-	-		
19	3PE	M	1003	-	50,50,50	0.29	0	53,55,55	0.28	0
16	FES	G	1004	3	0,4,4	-	-	-		
19	3PE	A	201	-	45,45,50	0.31	0	48,50,55	0.30	0
18	LFA	N	502	-	13,13,19	0.14	0	12,12,18	0.13	0
19	3PE	H	602	-	50,50,50	0.31	0	53,55,55	0.32	0
18	LFA	N	501	-	19,19,19	0.09	0	18,18,18	0.15	0
19	3PE	L	801	-	50,50,50	0.30	0	53,55,55	0.30	0
18	LFA	H	601	-	19,19,19	0.14	0	18,18,18	0.11	0
19	3PE	L	803	-	42,42,50	0.33	0	45,47,55	0.34	0
19	3PE	M	1002	-	50,50,50	0.31	0	53,55,55	0.29	0
14	SF4	B	301	5	0,12,12	-	-	-		
14	SF4	I	202	6	0,12,12	-	-	-		

In the following table, the Chirals column lists the number of chiral outliers, the number of chiral centers analysed, the number of these observed in the model and the number defined in the Chemical Component Dictionary. Similar counts are reported in the Torsion and Rings columns. '-' means no outliers of that kind were identified.

Mol	Type	Chain	Res	Link	Chirals	Torsions	Rings
15	FMN	F	502	-	-	6/18/18/18	0/3/3/3
19	3PE	L	804	-	-	16/54/54/54	-
14	SF4	F	501	1	-	-	0/6/5/5
14	SF4	G	1001	3	-	-	0/6/5/5
14	SF4	I	201	6	-	-	0/6/5/5
18	LFA	L	802	-	-	0/11/11/17	-
16	FES	E	201	2	-	-	0/1/1/1

Continued on next page...

Continued from previous page...

Mol	Type	Chain	Res	Link	Chirals	Torsions	Rings
19	3PE	M	1001	-	-	12/54/54/54	-
14	SF4	G	1002	3	-	-	0/6/5/5
19	3PE	M	1003	-	-	12/54/54/54	-
14	SF4	G	1003	3	-	-	0/6/5/5
16	FES	G	1004	3	-	-	0/1/1/1
19	3PE	A	201	-	-	11/49/49/54	-
18	LFA	N	502	-	-	0/11/11/17	-
19	3PE	H	602	-	-	12/54/54/54	-
18	LFA	N	501	-	-	1/17/17/17	-
19	3PE	L	801	-	-	14/54/54/54	-
18	LFA	H	601	-	-	1/17/17/17	-
19	3PE	L	803	-	-	7/46/46/54	-
19	3PE	M	1002	-	-	9/54/54/54	-
14	SF4	B	301	5	-	-	0/6/5/5
14	SF4	I	202	6	-	-	0/6/5/5

All (2) bond length outliers are listed below:

Mol	Chain	Res	Type	Atoms	Z	Observed(Å)	Ideal(Å)
15	F	502	FMN	C4A-N5	3.51	1.37	1.30
15	F	502	FMN	C10-N1	2.11	1.37	1.33

The worst 5 of 7 bond angle outliers are listed below:

Mol	Chain	Res	Type	Atoms	Z	Observed(°)	Ideal(°)
15	F	502	FMN	C4-N3-C2	-3.39	119.38	125.64
15	F	502	FMN	C4A-C10-N10	2.87	120.68	116.48
15	F	502	FMN	C4A-C4-N3	2.69	120.03	113.19
15	F	502	FMN	O4-C4-C4A	-2.62	119.64	126.60
15	F	502	FMN	C4A-C10-N1	-2.39	119.19	124.73

There are no chirality outliers.

5 of 101 torsion outliers are listed below:

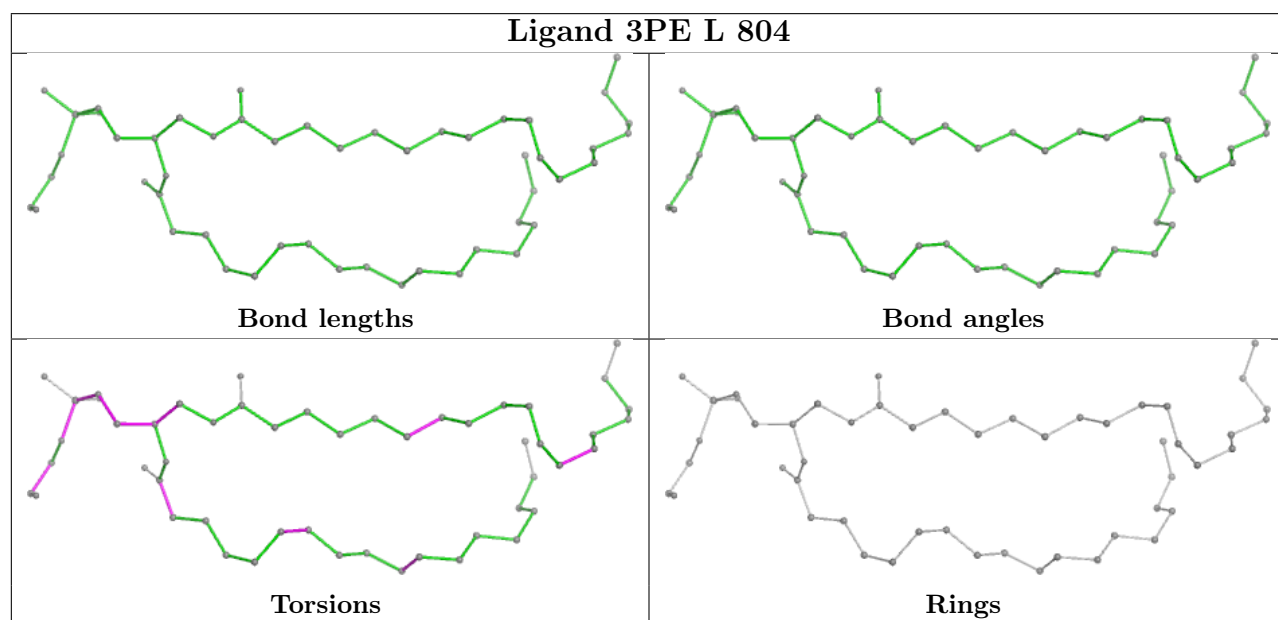
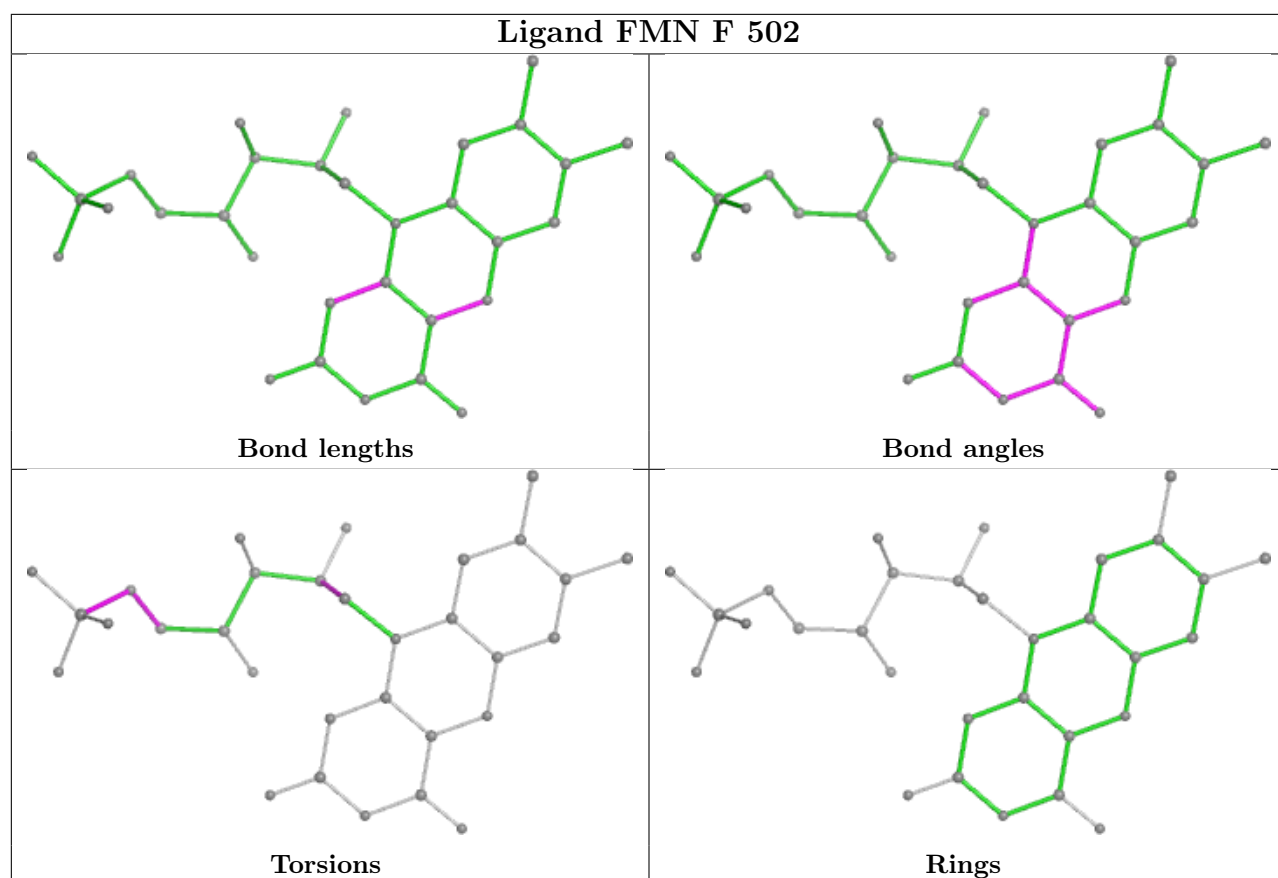
Mol	Chain	Res	Type	Atoms
15	F	502	FMN	N10-C1'-C2'-O2'
15	F	502	FMN	N10-C1'-C2'-C3'
15	F	502	FMN	C5'-O5'-P-O2P
15	F	502	FMN	C5'-O5'-P-O3P
19	H	602	3PE	C1-O11-P-O12

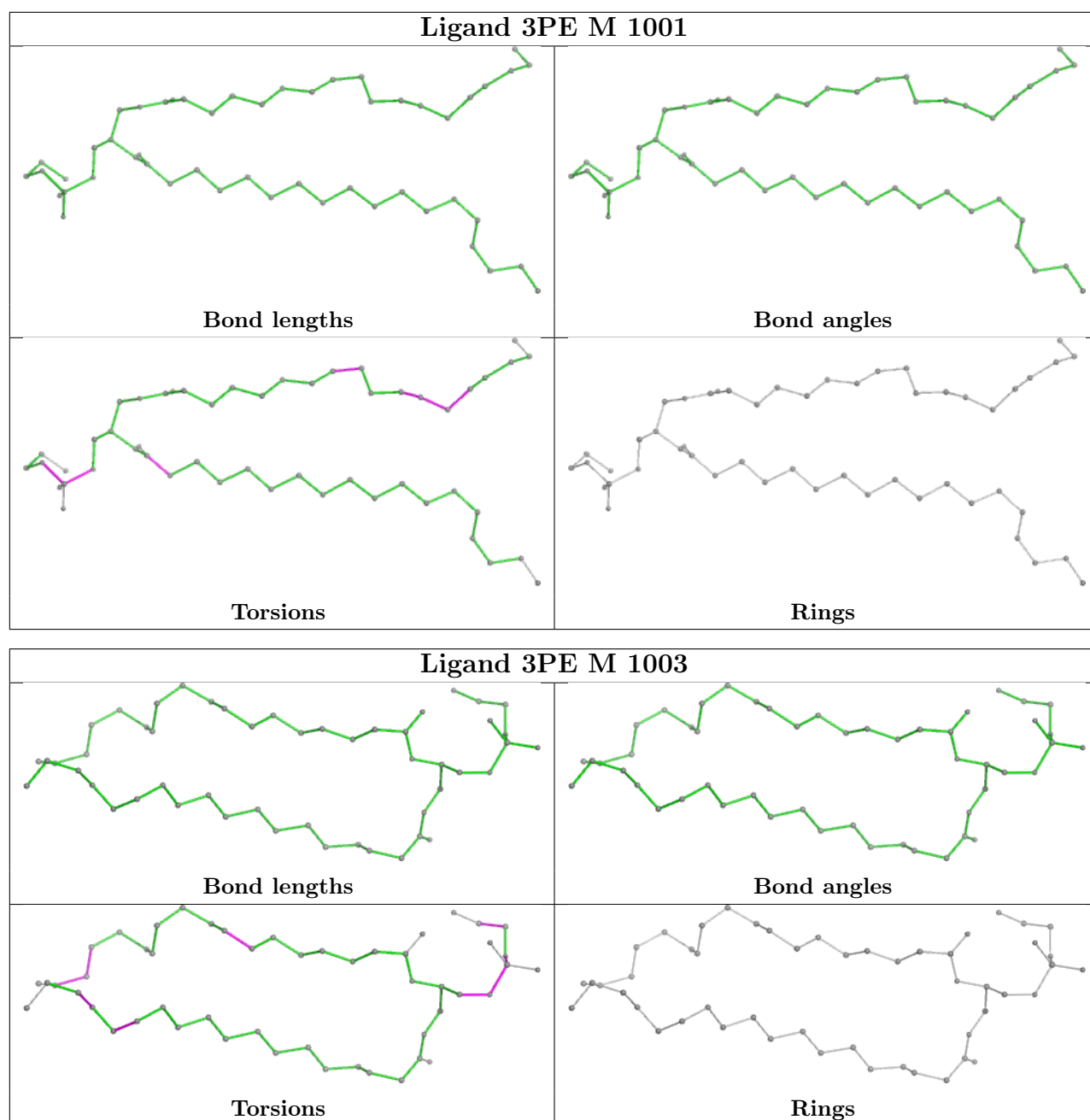
There are no ring outliers.

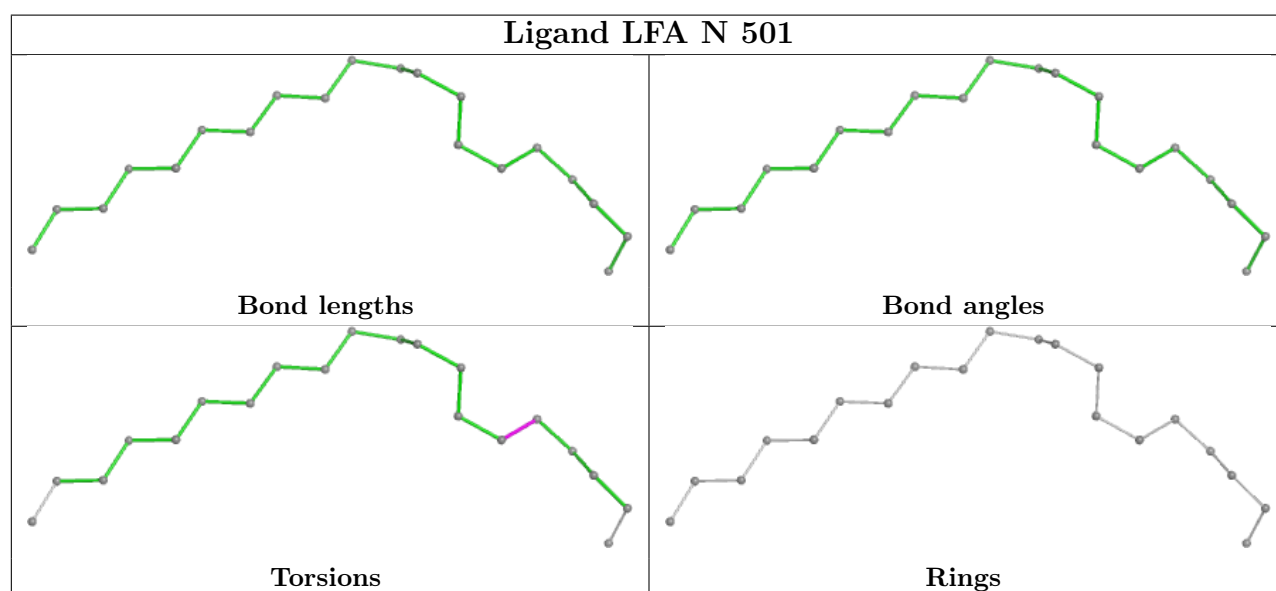
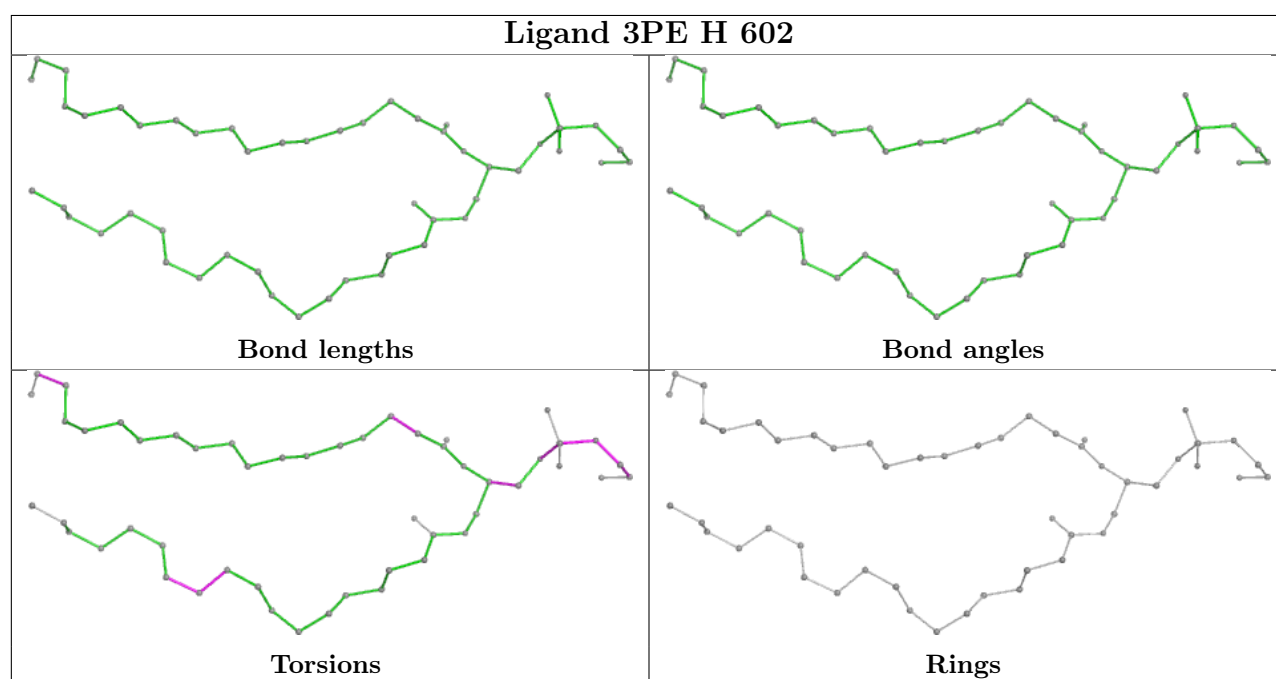
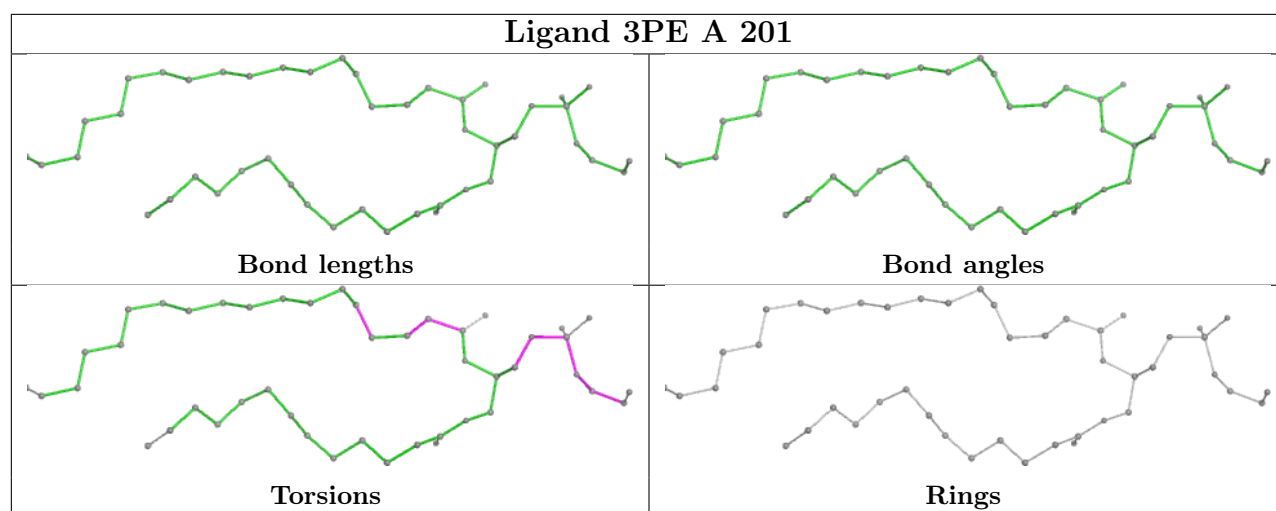
11 monomers are involved in 22 short contacts:

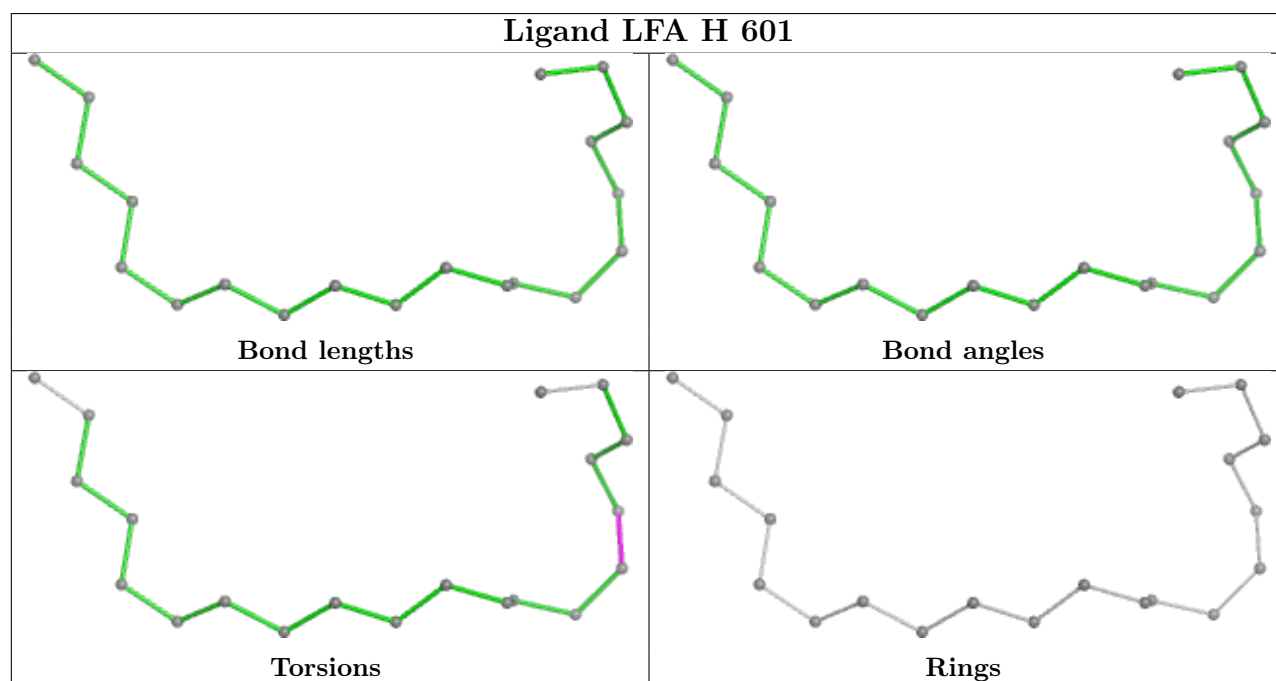
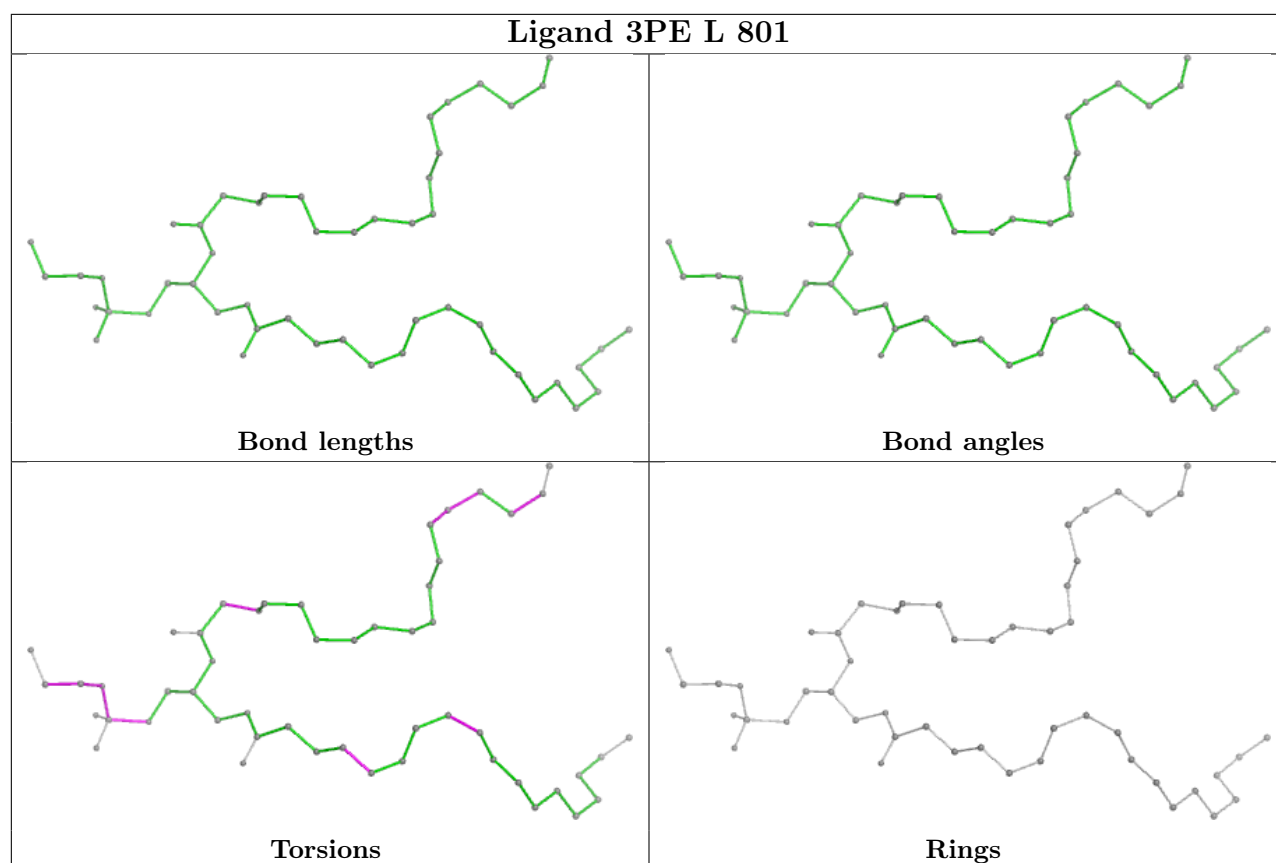
Mol	Chain	Res	Type	Clashes	Symm-Clashes
15	F	502	FMN	1	0
19	L	804	3PE	3	0
19	M	1001	3PE	4	0
19	M	1003	3PE	3	0
19	A	201	3PE	2	0
18	N	502	LFA	1	0
19	H	602	3PE	3	0
18	N	501	LFA	1	0
19	L	801	3PE	3	0
18	H	601	LFA	2	0
19	M	1002	3PE	2	0

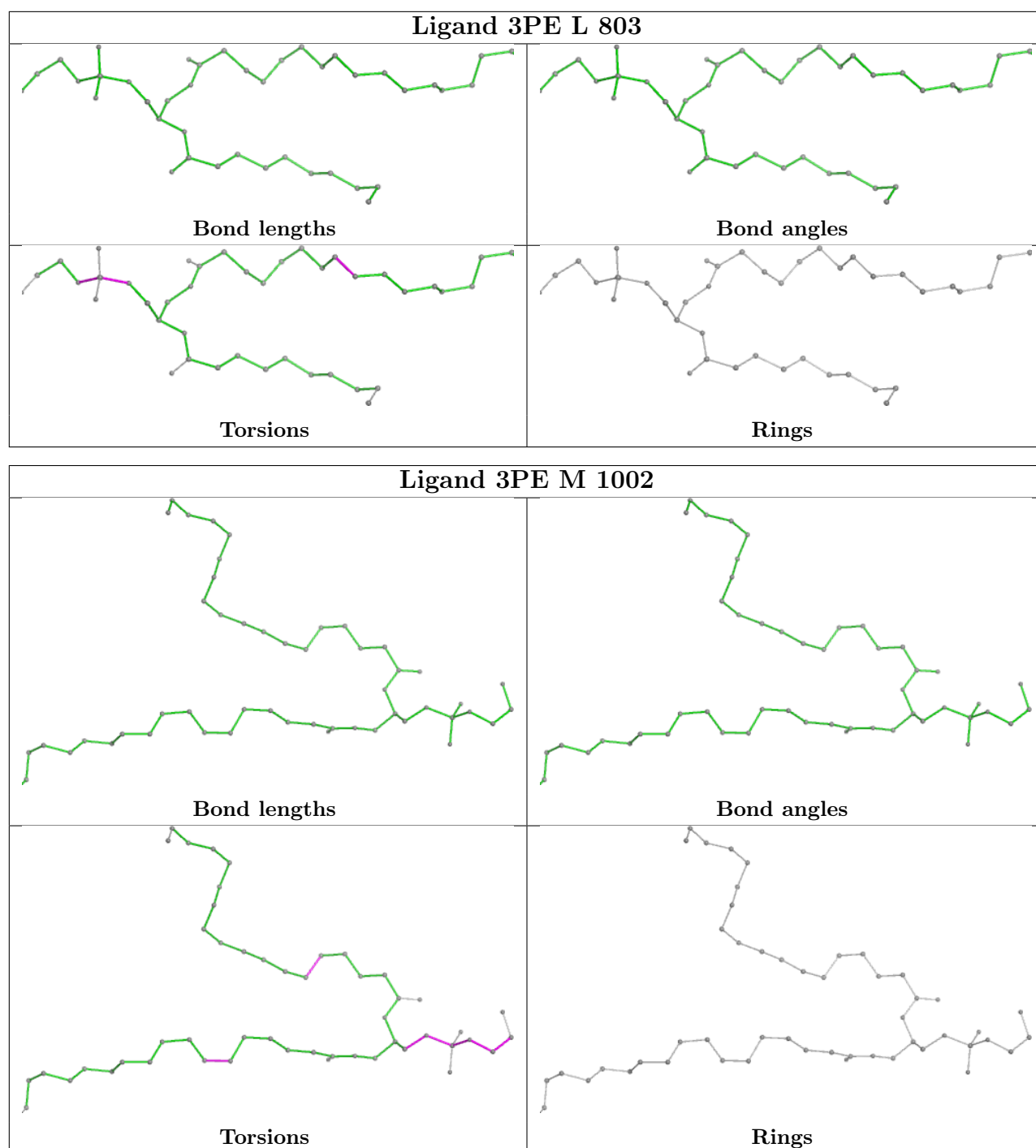
The following is a two-dimensional graphical depiction of Mogul quality analysis of bond lengths, bond angles, torsion angles, and ring geometry for all instances of the Ligand of Interest. In addition, ligands with molecular weight > 250 and outliers as shown on the validation Tables will also be included. For torsion angles, if less than 5% of the Mogul distribution of torsion angles is within 10 degrees of the torsion angle in question, then that torsion angle is considered an outlier. Any bond that is central to one or more torsion angles identified as an outlier by Mogul will be highlighted in the graph. For rings, the root-mean-square deviation (RMSD) between the ring in question and similar rings identified by Mogul is calculated over all ring torsion angles. If the average RMSD is greater than 60 degrees and the minimal RMSD between the ring in question and any Mogul-identified rings is also greater than 60 degrees, then that ring is considered an outlier. The outliers are highlighted in purple. The color gray indicates Mogul did not find sufficient equivalents in the CSD to analyse the geometry.











5.7 Other polymers [i](#)

There are no such residues in this entry.

5.8 Polymer linkage issues [i](#)

There are no chain breaks in this entry.

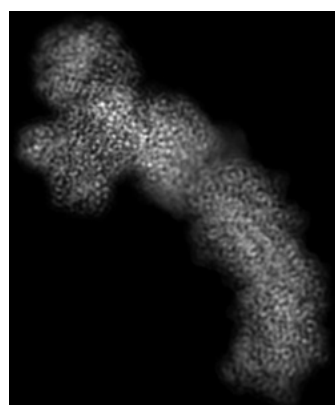
6 Map visualisation [i](#)

This section contains visualisations of the EMDB entry EMD-13238. These allow visual inspection of the internal detail of the map and identification of artifacts.

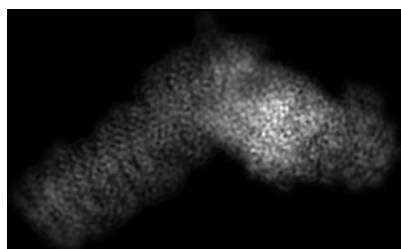
No raw map or half-maps were deposited for this entry and therefore no images, graphs, etc. pertaining to the raw map can be shown.

6.1 Orthogonal projections [i](#)

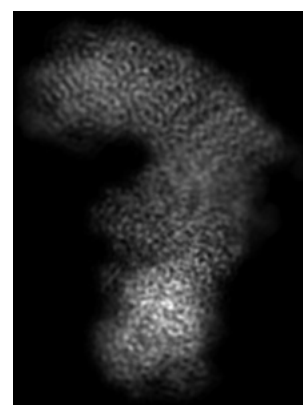
6.1.1 Primary map



X



Y

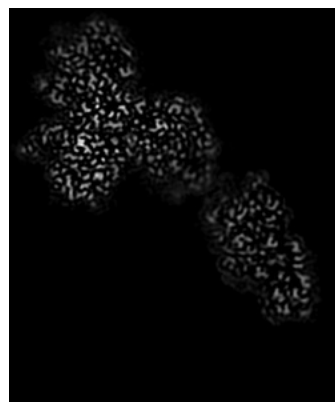


Z

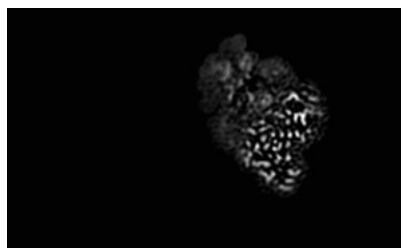
The images above show the map projected in three orthogonal directions.

6.2 Central slices [i](#)

6.2.1 Primary map



X Index: 71



Y Index: 96

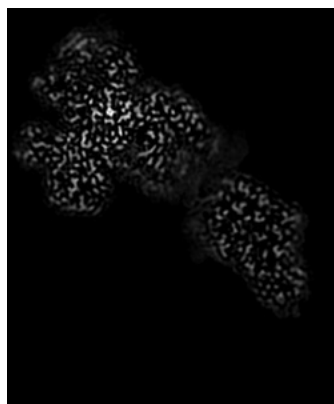


Z Index: 117

The images above show central slices of the map in three orthogonal directions.

6.3 Largest variance slices [i](#)

6.3.1 Primary map



X Index: 79



Y Index: 51

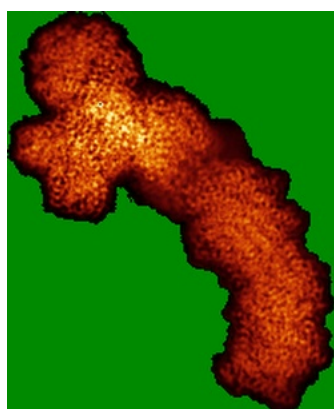


Z Index: 160

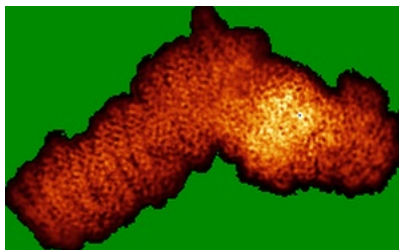
The images above show the largest variance slices of the map in three orthogonal directions.

6.4 Orthogonal standard-deviation projections (False-color) [i](#)

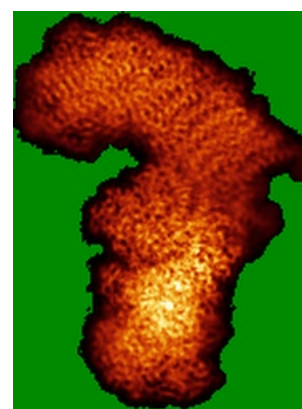
6.4.1 Primary map



X



Y



Z

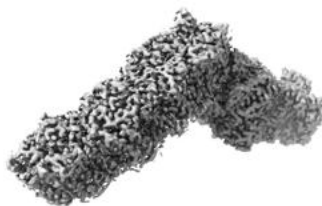
The images above show the map standard deviation projections with false color in three orthogonal directions. Minimum values are shown in green, max in blue, and dark to light orange shades represent small to large values respectively.

6.5 Orthogonal surface views [i](#)

6.5.1 Primary map



X



Y



Z

The images above show the 3D surface view of the map at the recommended contour level 0.04. These images, in conjunction with the slice images, may facilitate assessment of whether an appropriate contour level has been provided.

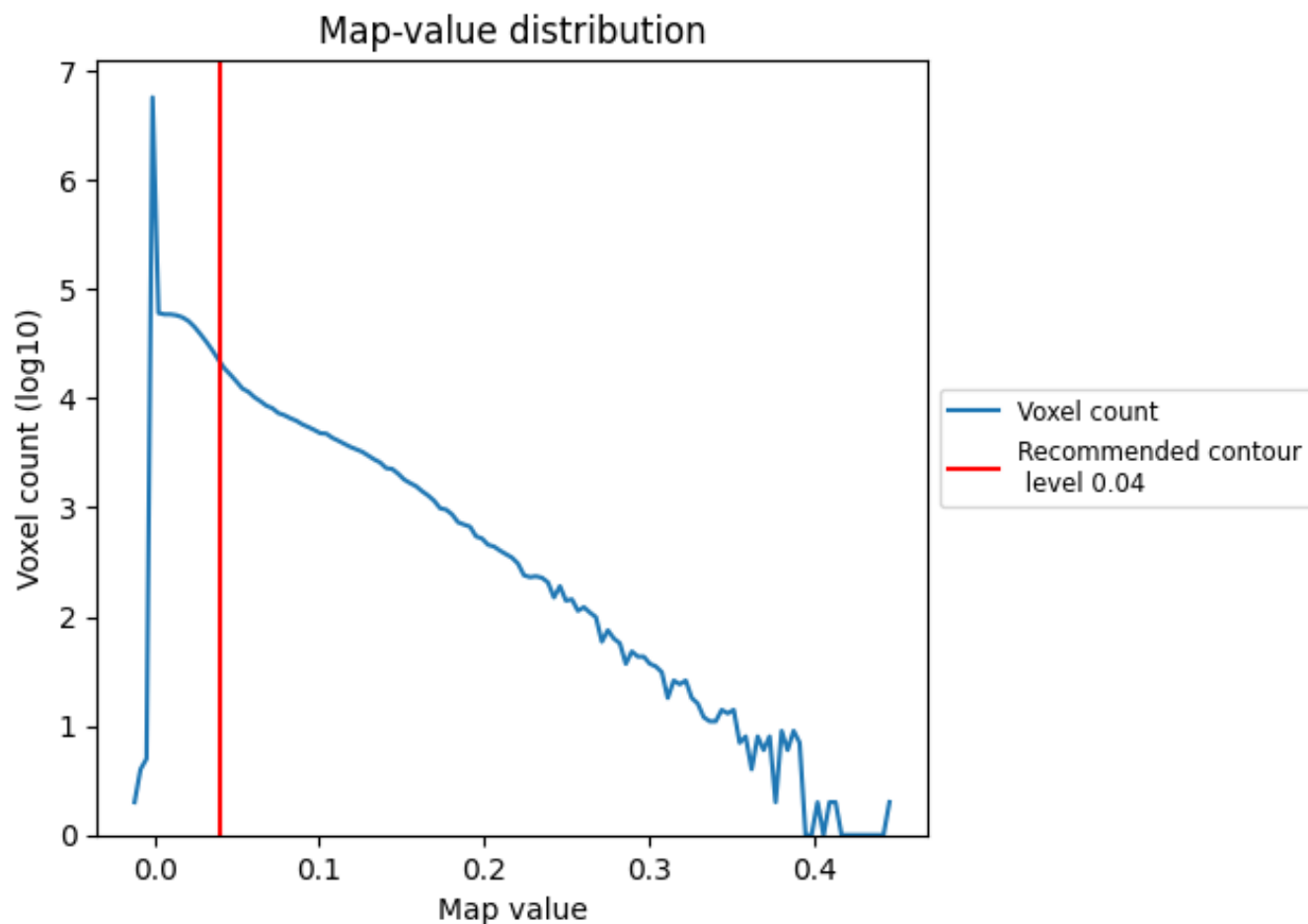
6.6 Mask visualisation [i](#)

This section was not generated. No masks/segmentation were deposited.

7 Map analysis [i](#)

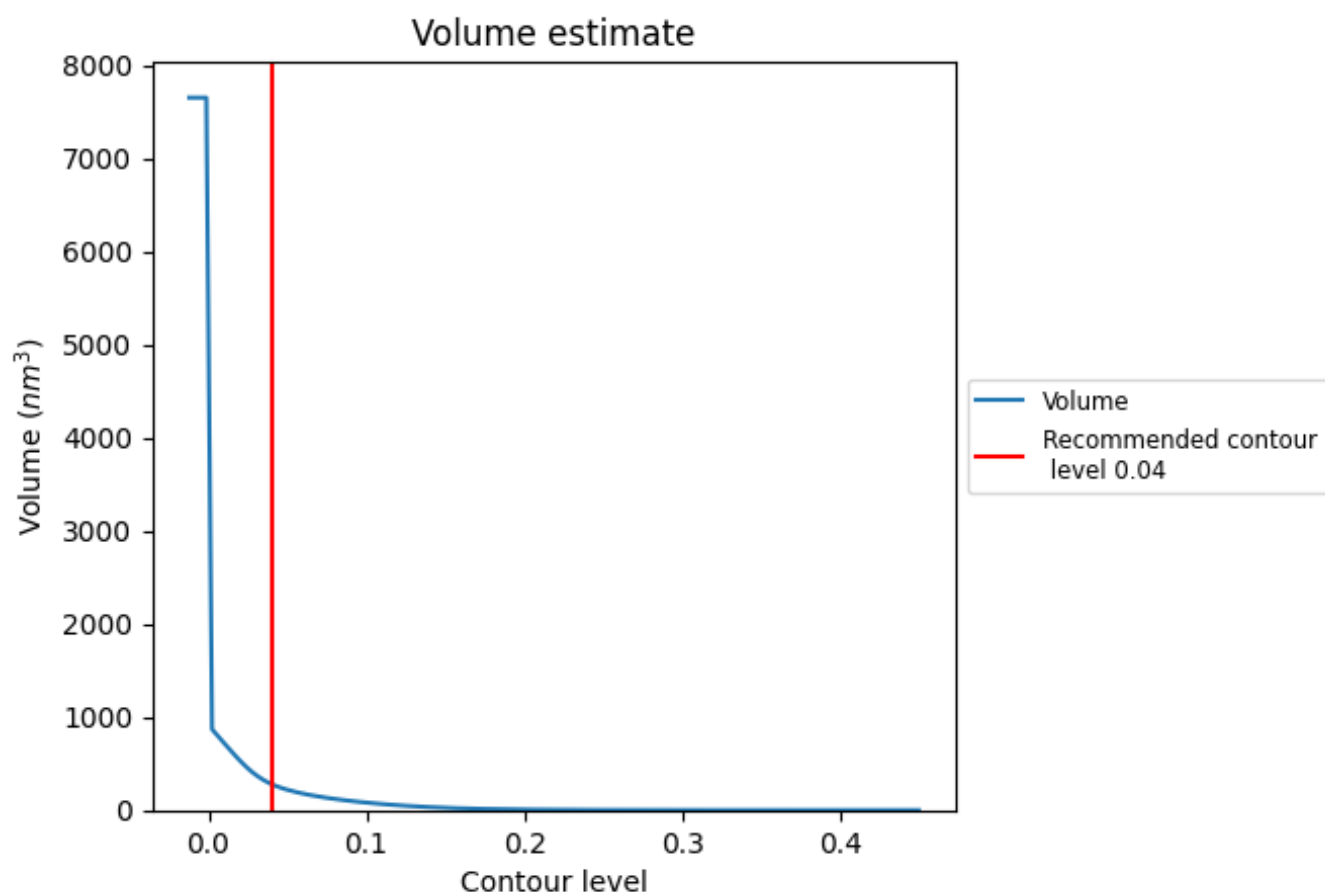
This section contains the results of statistical analysis of the map.

7.1 Map-value distribution [i](#)



The map-value distribution is plotted in 128 intervals along the x-axis. The y-axis is logarithmic. A spike in this graph at zero usually indicates that the volume has been masked.

7.2 Volume estimate [i](#)



The volume at the recommended contour level is 280 nm^3 ; this corresponds to an approximate mass of 253 kDa.

The volume estimate graph shows how the enclosed volume varies with the contour level. The recommended contour level is shown as a vertical line and the intersection between the line and the curve gives the volume of the enclosed surface at the given level.

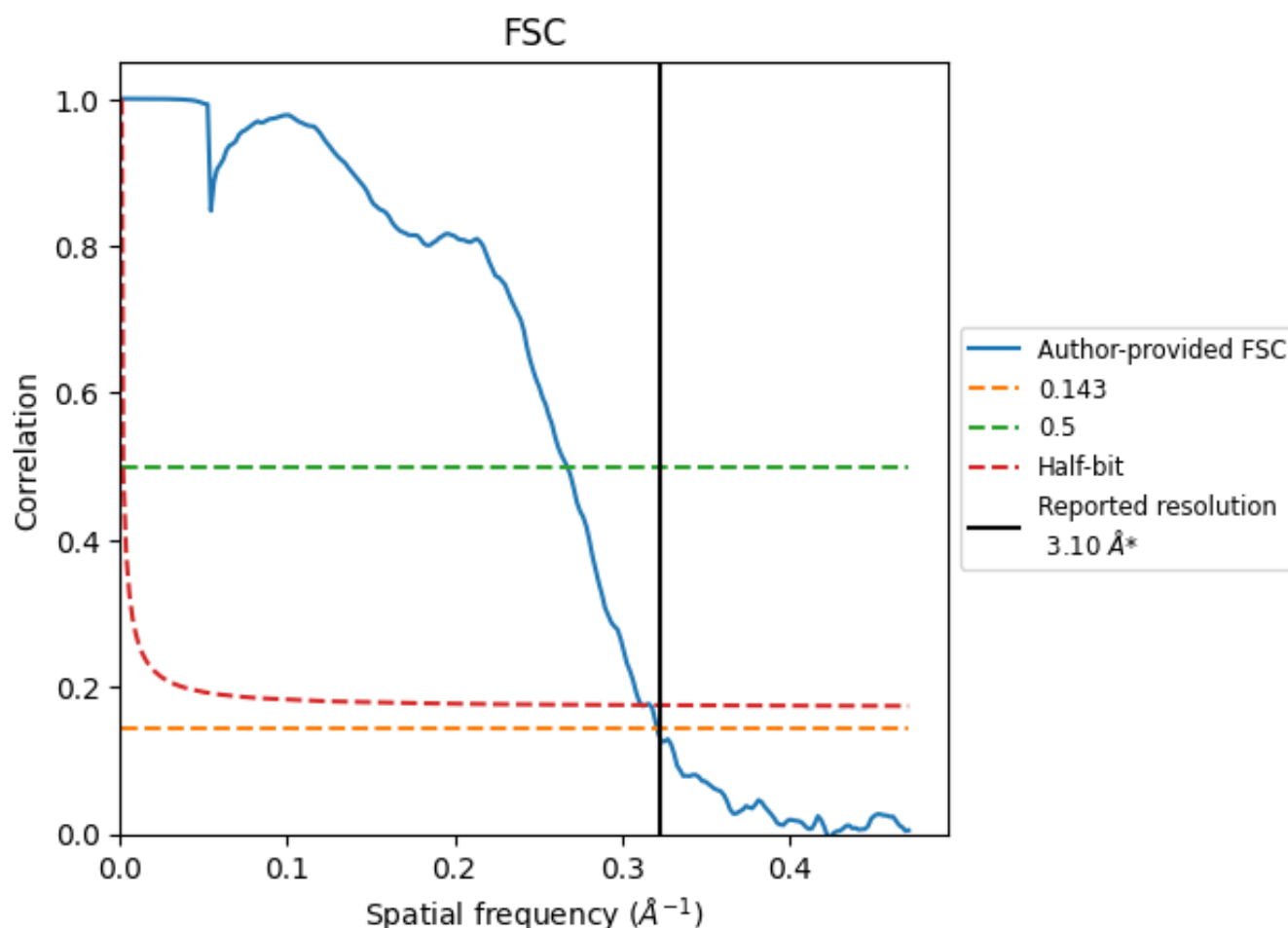
7.3 Rotationally averaged power spectrum [i](#)

This section was not generated. The rotationally averaged power spectrum is only generated for cubic maps.

8 Fourier-Shell correlation [i](#)

Fourier-Shell Correlation (FSC) is the most commonly used method to estimate the resolution of single-particle and subtomogram-averaged maps. The shape of the curve depends on the imposed symmetry, mask and whether or not the two 3D reconstructions used were processed from a common reference. The reported resolution is shown as a black line. A curve is displayed for the half-bit criterion in addition to lines showing the 0.143 gold standard cut-off and 0.5 cut-off.

8.1 FSC [i](#)



*Reported resolution corresponds to spatial frequency of 0.323 Å⁻¹

8.2 Resolution estimates [i](#)

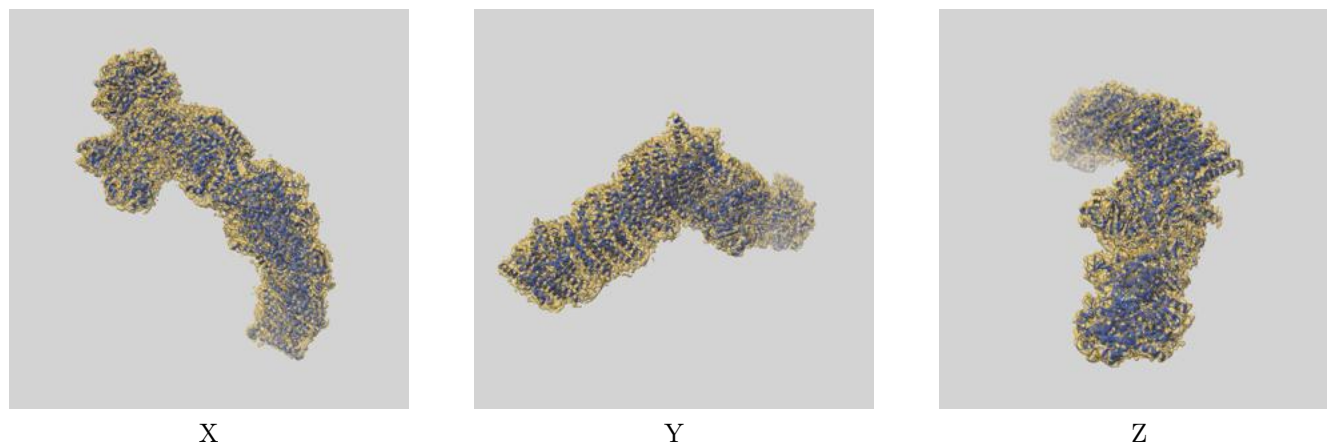
Resolution estimate (Å)	Estimation criterion (FSC cut-off)		
	0.143	0.5	Half-bit
Reported by author	3.10	-	-
Author-provided FSC curve	3.11	3.74	3.20
Unmasked-calculated*	-	-	-

*Resolution estimate based on FSC curve calculated by comparison of deposited half-maps.

9 Map-model fit [i](#)

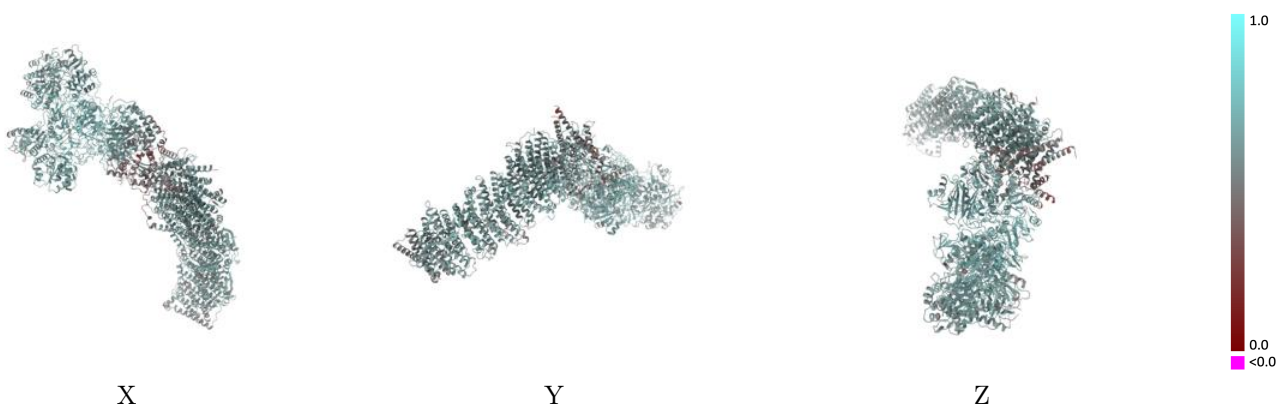
This section contains information regarding the fit between EMDB map EMD-13238 and PDB model 7P7K. Per-residue inclusion information can be found in section [3](#) on page [10](#).

9.1 Map-model overlay [i](#)



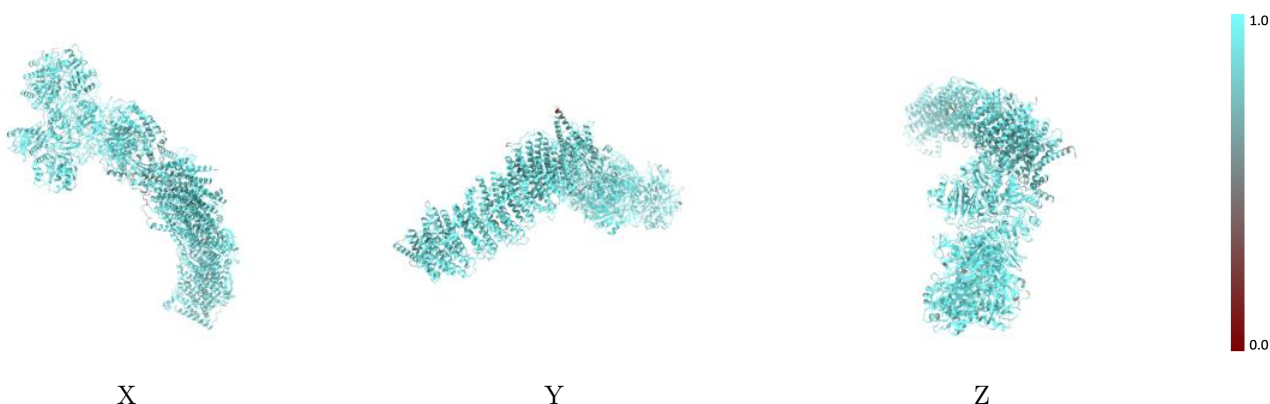
The images above show the 3D surface view of the map at the recommended contour level 0.04 at 50% transparency in yellow overlaid with a ribbon representation of the model coloured in blue. These images allow for the visual assessment of the quality of fit between the atomic model and the map.

9.2 Q-score mapped to coordinate model [i](#)



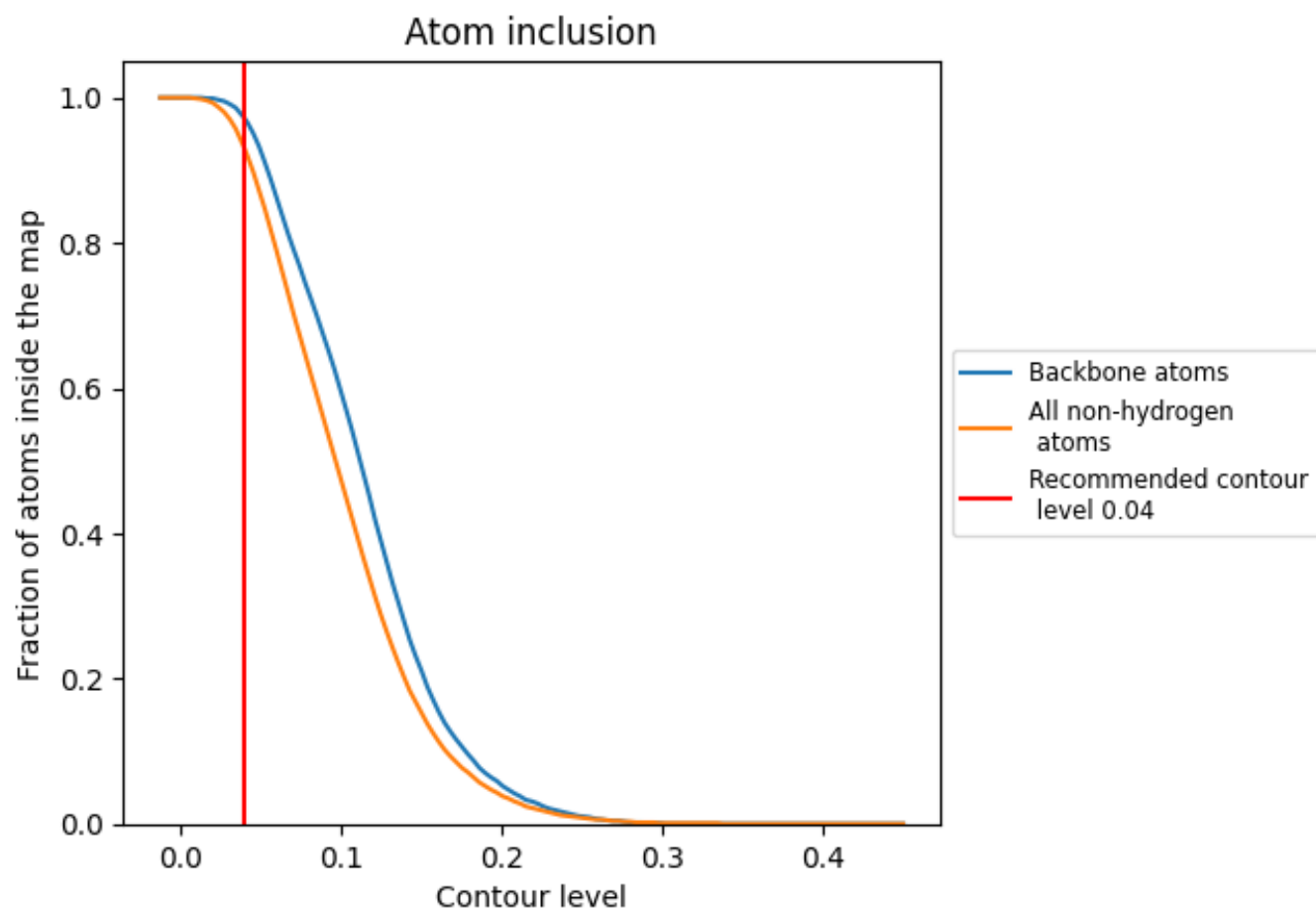
The images above show the model with each residue coloured according to its Q-score. This shows their resolvability in the map with higher Q-score values reflecting better resolvability. Please note: Q-score is calculating the resolvability of atoms, and thus high values are only expected at resolutions at which atoms can be resolved. Low Q-score values may therefore be expected for many entries.

9.3 Atom inclusion mapped to coordinate model [i](#)



The images above show the model with each residue coloured according to its atom inclusion. This shows to what extent they are inside the map at the recommended contour level (0.04).

9.4 Atom inclusion [i](#)



At the recommended contour level, 97% of all backbone atoms, 93% of all non-hydrogen atoms, are inside the map.

9.5 Map-model fit summary ⓘ

The table lists the average atom inclusion at the recommended contour level (0.04) and Q-score for the entire model and for each chain.

Chain	Atom inclusion	Q-score
All	<div><div></div>0.9310</div>	<div><div></div>0.5890</div>
A	<div><div></div>0.8840</div>	<div><div></div>0.5330</div>
B	<div><div></div>0.9190</div>	<div><div></div>0.5410</div>
C	<div><div></div>0.9350</div>	<div><div></div>0.5980</div>
E	<div><div></div>0.9330</div>	<div><div></div>0.5930</div>
F	<div><div></div>0.9310</div>	<div><div></div>0.5910</div>
G	<div><div></div>0.9660</div>	<div><div></div>0.6400</div>
H	<div><div></div>0.8590</div>	<div><div></div>0.4960</div>
I	<div><div></div>0.9610</div>	<div><div></div>0.6520</div>
J	<div><div></div>0.9100</div>	<div><div></div>0.5640</div>
K	<div><div></div>0.9600</div>	<div><div></div>0.5950</div>
L	<div><div></div>0.9100</div>	<div><div></div>0.5640</div>
M	<div><div></div>0.9240</div>	<div><div></div>0.5810</div>
N	<div><div></div>0.9450</div>	<div><div></div>0.5910</div>

1.0

0.0

<0.0