



Full wwPDB X-ray Structure Validation Report ⓘ

Jan 22, 2025 – 08:03 PM EST

PDB ID : 6P6Z
Title : HCV NS3/4A protease domain of genotype 4a with an extended linker in complex with glecaprevir
Authors : Timm, J.; Schiffer, C.A.
Deposited on : 2019-06-04
Resolution : 2.29 Å(reported)

This is a Full wwPDB X-ray Structure Validation Report for a publicly released PDB entry.

We welcome your comments at validation@mail.wwpdb.org

A user guide is available at

<https://www.wwpdb.org/validation/2017/XrayValidationReportHelp>

with specific help available everywhere you see the ⓘ symbol.

The types of validation reports are described at

<http://www.wwpdb.org/validation/2017/FAQs#types>.

The following versions of software and data (see [references ⓘ](#)) were used in the production of this report:

MolProbity	:	4.02b-467
Mogul	:	2022.3.0, CSD as543be (2022)
Xtriage (Phenix)	:	1.21
EDS	:	3.0
buster-report	:	1.1.7 (2018)
Percentile statistics	:	20231227.v01 (using entries in the PDB archive December 27th 2023)
CCP4	:	9.0.004 (Gargrove)
Density-Fitness	:	1.0.11
Ideal geometry (proteins)	:	Engh & Huber (2001)
Ideal geometry (DNA, RNA)	:	Parkinson et al. (1996)
Validation Pipeline (wwPDB-VP)	:	2.40

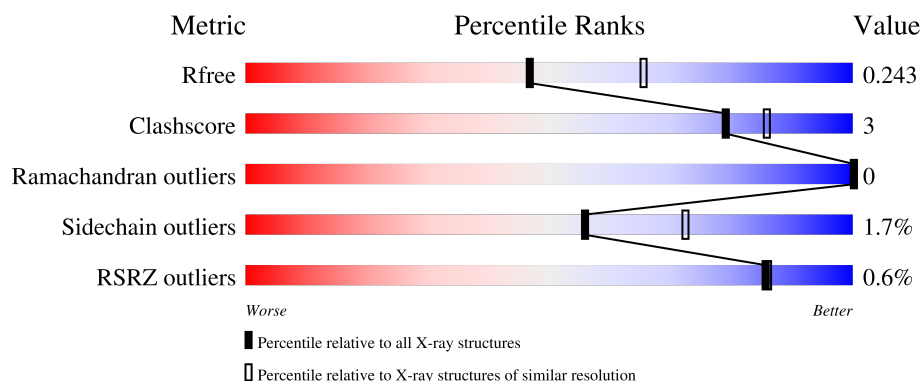
1 Overall quality at a glance

The following experimental techniques were used to determine the structure:

X-RAY DIFFRACTION

The reported resolution of this entry is 2.29 Å.

Percentile scores (ranging between 0-100) for global validation metrics of the entry are shown in the following graphic. The table shows the number of entries on which the scores are based.



Metric	Whole archive (#Entries)	Similar resolution (#Entries, resolution range(Å))
R_{free}	164625	5963 (2.30-2.30)
Clashscore	180529	6698 (2.30-2.30)
Ramachandran outliers	177936	6640 (2.30-2.30)
Sidechain outliers	177891	6640 (2.30-2.30)
RSRZ outliers	164620	5963 (2.30-2.30)

The table below summarises the geometric issues observed across the polymeric chains and their fit to the electron density. The red, orange, yellow and green segments of the lower bar indicate the fraction of residues that contain outliers for ≥ 3 , 2, 1 and 0 types of geometric quality criteria respectively. A grey segment represents the fraction of residues that are not modelled. The numeric value for each fraction is indicated below the corresponding segment, with a dot representing fractions $\leq 5\%$. The upper red bar (where present) indicates the fraction of residues that have poor fit to the electron density. The numeric value is given above the bar.

Mol	Chain	Length	Quality of chain
1	A	203	 72% 5% 22%

2 Entry composition

There are 4 unique types of molecules in this entry. The entry contains 2454 atoms, of which 1183 are hydrogens and 0 are deuteriums.

In the tables below, the ZeroOcc column contains the number of atoms modelled with zero occupancy, the AltConf column contains the number of residues with at least one atom in alternate conformation and the Trace column contains the number of residues modelled with at most 2 atoms.

- Molecule 1 is a protein called Non-structural protein 4A,Serine protease NS3.

Mol	Chain	Residues	Atoms						ZeroOcc	AltConf	Trace
1	A	158	Total	C	H	N	O	S	0	1	0
			2271	715	1137	201	210	8			

There are 28 discrepancies between the modelled and reference sequences:

Chain	Residue	Modelled	Actual	Comment	Reference
A	983	MET	-	expression tag	UNP O39929
A	984	ALA	-	expression tag	UNP O39929
A	985	SER	-	expression tag	UNP O39929
A	986	MET	-	expression tag	UNP O39929
A	987	LYS	-	expression tag	UNP O39929
A	988	LYS	-	expression tag	UNP O39929
A	989	LYS	-	expression tag	UNP O39929
A	1000A	SER	-	linker	UNP O39929
A	1000B	GLY	-	linker	UNP O39929
A	1000C	GLY	-	linker	UNP O39929
A	1000D	SER	-	linker	UNP O39929
A	1000E	GLY	-	linker	UNP O39929
A	1000F	ASP	-	linker	UNP O39929
A	1000P	GLU	LEU	engineered mutation	UNP O39929
A	1000Q	GLU	PHE	engineered mutation	UNP O39929
A	1000T	GLN	ILE	engineered mutation	UNP O39929
A	1000U	GLU	VAL	engineered mutation	UNP O39929
A	1000X	GLN	LEU	engineered mutation	UNP O39929
A	1054	SER	THR	engineered mutation	UNP O39929
A	1061	GLY	ALA	engineered mutation	UNP O39929
A	1092	LYS	ARG	engineered mutation	UNP O39929
A	1095	THR	ALA	engineered mutation	UNP O39929
A	1101	ALA	SER	engineered mutation	UNP O39929
A	1102	SER	ALA	engineered mutation	UNP O39929
A	1114	VAL	ILE	engineered mutation	UNP O39929
A	1134	THR	ILE	engineered mutation	UNP O39929
A	1150	VAL	ARG	engineered mutation	UNP O39929

Continued on next page...

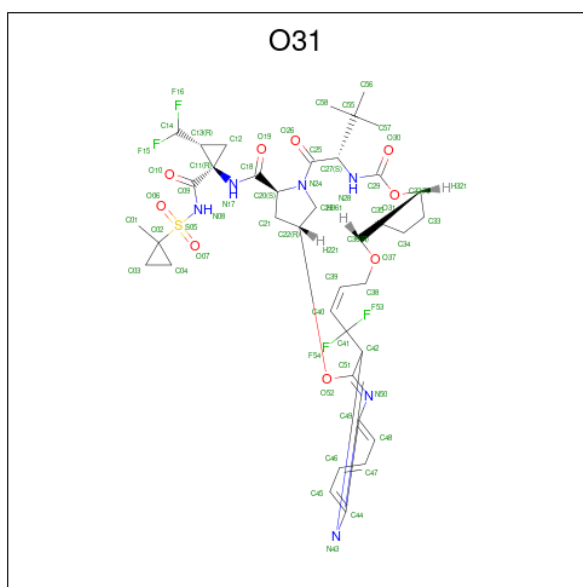
Continued from previous page...

Chain	Residue	Modelled	Actual	Comment	Reference
A	1153	LEU	ILE	engineered mutation	UNP O39929

- Molecule 2 is ZINC ION (three-letter code: ZN) (formula: Zn).

Mol	Chain	Residues	Atoms	ZeroOcc	AltConf
2	A	1	Total Zn 1 1	0	0

- Molecule 3 is Glecaprevir (three-letter code: O31) (formula: C₃₈H₄₆F₄N₆O₉S) (labeled as "Ligand of Interest" by depositor).



Mol	Chain	Residues	Atoms							ZeroOcc	AltConf
3	A	1	Total	C	F	H	N	O	S	0	0
			104	38	4	46	6	9	1		

- Molecule 4 is water.

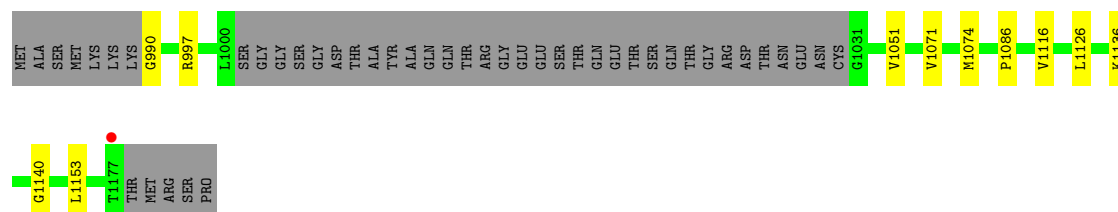
Mol	Chain	Residues	Atoms	ZeroOcc	AltConf
4	A	78	Total O 78 78	0	0

3 Residue-property plots [i](#)

These plots are drawn for all protein, RNA, DNA and oligosaccharide chains in the entry. The first graphic for a chain summarises the proportions of the various outlier classes displayed in the second graphic. The second graphic shows the sequence view annotated by issues in geometry and electron density. Residues are color-coded according to the number of geometric quality criteria for which they contain at least one outlier: green = 0, yellow = 1, orange = 2 and red = 3 or more. A red dot above a residue indicates a poor fit to the electron density ($RSRZ > 2$). Stretches of 2 or more consecutive residues without any outlier are shown as a green connector. Residues present in the sample, but not in the model, are shown in grey.

- Molecule 1: Non-structural protein 4A,Serine protease NS3

Chain A: 



4 Data and refinement statistics

Property	Value	Source
Space group	P 21 21 21	Depositor
Cell constants a, b, c, α , β , γ	43.91Å 60.74Å 61.46Å 90.00° 90.00° 90.00°	Depositor
Resolution (Å)	27.42 – 2.29 27.42 – 2.29	Depositor EDS
% Data completeness (in resolution range)	94.8 (27.42-2.29) 89.5 (27.42-2.29)	Depositor EDS
R_{merge}	(Not available)	Depositor
R_{sym}	(Not available)	Depositor
$\langle I/\sigma(I) \rangle$ ¹	4.95 (at 2.29Å)	Xtriage
Refinement program	PHENIX (1.14 _3211: ???)	Depositor
R, R_{free}	0.193 , 0.242 0.192 , 0.243	Depositor DCC
R_{free} test set	6998 reflections (4.93%)	wwPDB-VP
Wilson B-factor (Å ²)	24.0	Xtriage
Anisotropy	0.340	Xtriage
Bulk solvent k_{sol} (e/Å ³), B_{sol} (Å ²)	0.39 , 28.6	EDS
L-test for twinning ²	$\langle L \rangle = 0.47$, $\langle L^2 \rangle = 0.31$	Xtriage
Estimated twinning fraction	0.045 for -h,l,k	Xtriage
F_o, F_c correlation	0.94	EDS
Total number of atoms	2454	wwPDB-VP
Average B, all atoms (Å ²)	28.0	wwPDB-VP

Xtriage's analysis on translational NCS is as follows: *The largest off-origin peak in the Patterson function is 8.27% of the height of the origin peak. No significant pseudotranslation is detected.*

¹Intensities estimated from amplitudes.

²Theoretical values of $\langle |L| \rangle$, $\langle L^2 \rangle$ for acentric reflections are 0.5, 0.333 respectively for untwinned datasets, and 0.375, 0.2 for perfectly twinned datasets.

5 Model quality [i](#)

5.1 Standard geometry [i](#)

Bond lengths and bond angles in the following residue types are not validated in this section: O31, ZN

The Z score for a bond length (or angle) is the number of standard deviations the observed value is removed from the expected value. A bond length (or angle) with $|Z| > 5$ is considered an outlier worth inspection. RMSZ is the root-mean-square of all Z scores of the bond lengths (or angles).

Mol	Chain	Bond lengths		Bond angles	
		RMSZ	$\# Z > 5$	RMSZ	$\# Z > 5$
1	A	0.26	0/1157	0.46	0/1581

There are no bond length outliers.

There are no bond angle outliers.

There are no chirality outliers.

There are no planarity outliers.

5.2 Too-close contacts [i](#)

In the following table, the Non-H and H(model) columns list the number of non-hydrogen atoms and hydrogen atoms in the chain respectively. The H(added) column lists the number of hydrogen atoms added and optimized by MolProbity. The Clashes column lists the number of clashes within the asymmetric unit, whereas Symm-Clashes lists symmetry-related clashes.

Mol	Chain	Non-H	H(model)	H(added)	Clashes	Symm-Clashes
1	A	1134	1137	1135	6	0
2	A	1	0	0	0	0
3	A	58	46	0	0	0
4	A	78	0	0	1	1
All	All	1271	1183	1135	6	1

The all-atom clashscore is defined as the number of clashes found per 1000 atoms (including hydrogen atoms). The all-atom clashscore for this structure is 3.

All (6) close contacts within the same asymmetric unit are listed below, sorted by their clash magnitude.

Atom-1	Atom-2	Interatomic distance (Å)	Clash overlap (Å)
1:A:990:GLY:O	4:A:1301:HOH:O	2.06	0.73
1:A:1140:GLY:O	1:A:1153:LEU:HD11	2.02	0.60
1:A:1051:VAL:HG21	1:A:1074[B]:MET:HE3	1.94	0.49
1:A:1051:VAL:HG21	1:A:1074[B]:MET:CE	2.44	0.47
1:A:1071:VAL:HG11	1:A:1086:PRO:HG2	1.96	0.46
1:A:1116:VAL:HG22	1:A:1126:LEU:HD23	1.97	0.45

All (1) symmetry-related close contacts are listed below. The label for Atom-2 includes the symmetry operator and encoded unit-cell translations to be applied.

Atom-1	Atom-2	Interatomic distance (Å)	Clash overlap (Å)
4:A:1340:HOH:O	4:A:1368:HOH:O[3_645]	2.13	0.07

5.3 Torsion angles [i](#)

5.3.1 Protein backbone [i](#)

In the following table, the Percentiles column shows the percent Ramachandran outliers of the chain as a percentile score with respect to all X-ray entries followed by that with respect to entries of similar resolution.

The Analysed column shows the number of residues for which the backbone conformation was analysed, and the total number of residues.

Mol	Chain	Analysed	Favoured	Allowed	Outliers	Percentiles	
1	A	155/203 (76%)	150 (97%)	5 (3%)	0	100	100

There are no Ramachandran outliers to report.

5.3.2 Protein sidechains [i](#)

In the following table, the Percentiles column shows the percent sidechain outliers of the chain as a percentile score with respect to all X-ray entries followed by that with respect to entries of similar resolution.

The Analysed column shows the number of residues for which the sidechain conformation was analysed, and the total number of residues.

Mol	Chain	Analysed	Rotameric	Outliers	Percentiles	
1	A	122/162 (75%)	120 (98%)	2 (2%)	58	74

All (2) residues with a non-rotameric sidechain are listed below:

Mol	Chain	Res	Type
1	A	997	ARG
1	A	1136	LYS

Sometimes sidechains can be flipped to improve hydrogen bonding and reduce clashes. There are no such sidechains identified.

5.3.3 RNA ⓘ

There are no RNA molecules in this entry.

5.4 Non-standard residues in protein, DNA, RNA chains ⓘ

There are no non-standard protein/DNA/RNA residues in this entry.

5.5 Carbohydrates ⓘ

There are no oligosaccharides in this entry.

5.6 Ligand geometry ⓘ

Of 2 ligands modelled in this entry, 1 is monoatomic - leaving 1 for Mogul analysis.

In the following table, the Counts columns list the number of bonds (or angles) for which Mogul statistics could be retrieved, the number of bonds (or angles) that are observed in the model and the number of bonds (or angles) that are defined in the Chemical Component Dictionary. The Link column lists molecule types, if any, to which the group is linked. The Z score for a bond length (or angle) is the number of standard deviations the observed value is removed from the expected value. A bond length (or angle) with $|Z| > 2$ is considered an outlier worth inspection. RMSZ is the root-mean-square of all Z scores of the bond lengths (or angles).

Mol	Type	Chain	Res	Link	Bond lengths			Bond angles		
					Counts	RMSZ	$\# Z > 2$	Counts	RMSZ	$\# Z > 2$
3	O31	A	1202	-	57,64,64	3.28	22 (38%)	75,101,101	2.05	16 (21%)

In the following table, the Chirals column lists the number of chiral outliers, the number of chiral centers analysed, the number of these observed in the model and the number defined in the Chemical Component Dictionary. Similar counts are reported in the Torsion and Rings columns. '-' means no outliers of that kind were identified.

Mol	Type	Chain	Res	Link	Chirals	Torsions	Rings
3	O31	A	1202	-	-	6/63/107/107	0/6/7/7

All (22) bond length outliers are listed below:

Mol	Chain	Res	Type	Atoms	Z	Observed(Å)	Ideal(Å)
3	A	1202	O31	C42-N43	11.13	1.44	1.30
3	A	1202	O31	C49-N50	10.17	1.53	1.37
3	A	1202	O31	C44-N43	9.14	1.51	1.37
3	A	1202	O31	C18-N17	7.20	1.49	1.34
3	A	1202	O31	C51-N50	6.31	1.44	1.30
3	A	1202	O31	C25-N24	6.20	1.48	1.34
3	A	1202	O31	C29-N28	5.20	1.47	1.34
3	A	1202	O31	O31-C29	4.35	1.42	1.35
3	A	1202	O31	O52-C51	3.79	1.44	1.36
3	A	1202	O31	C12-C11	2.82	1.54	1.51
3	A	1202	O31	C21-C20	-2.79	1.48	1.53
3	A	1202	O31	O31-C32	-2.71	1.41	1.46
3	A	1202	O31	C23-N24	2.37	1.50	1.47
3	A	1202	O31	C11-C13	2.37	1.55	1.52
3	A	1202	O31	C23-C22	-2.23	1.49	1.52
3	A	1202	O31	O06-S05	2.20	1.47	1.43
3	A	1202	O31	O37-C36	-2.18	1.39	1.43
3	A	1202	O31	O07-S05	2.14	1.47	1.43
3	A	1202	O31	O19-C18	-2.11	1.19	1.23
3	A	1202	O31	S05-N08	2.08	1.71	1.61
3	A	1202	O31	C47-C48	2.05	1.41	1.36
3	A	1202	O31	O10-C09	-2.02	1.19	1.22

All (16) bond angle outliers are listed below:

Mol	Chain	Res	Type	Atoms	Z	Observed(°)	Ideal(°)
3	A	1202	O31	O07-S05-O06	-9.18	102.01	120.45
3	A	1202	O31	O31-C29-N28	6.25	118.23	110.26
3	A	1202	O31	C09-C11-N17	5.66	122.14	116.10
3	A	1202	O31	O06-S05-C02	5.15	112.43	107.63
3	A	1202	O31	C13-C11-N17	-4.41	105.56	117.62
3	A	1202	O31	C23-N24-C20	-3.38	107.35	111.83
3	A	1202	O31	C18-C20-N24	-3.22	103.72	112.50
3	A	1202	O31	F15-C14-C13	3.18	113.46	110.04
3	A	1202	O31	O07-S05-C02	2.98	110.40	107.63
3	A	1202	O31	C21-C20-C18	2.89	116.89	111.36
3	A	1202	O31	O30-C29-N28	-2.80	120.28	124.86
3	A	1202	O31	F16-C14-F15	2.59	110.52	105.53

Continued on next page...

Continued from previous page...

Mol	Chain	Res	Type	Atoms	Z	Observed(°)	Ideal(°)
3	A	1202	O31	C27-C25-N24	2.18	121.07	118.46
3	A	1202	O31	C42-N43-C44	2.16	119.65	115.17
3	A	1202	O31	C55-C27-N28	-2.10	108.65	111.94
3	A	1202	O31	O31-C29-O30	-2.08	121.49	124.55

There are no chirality outliers.

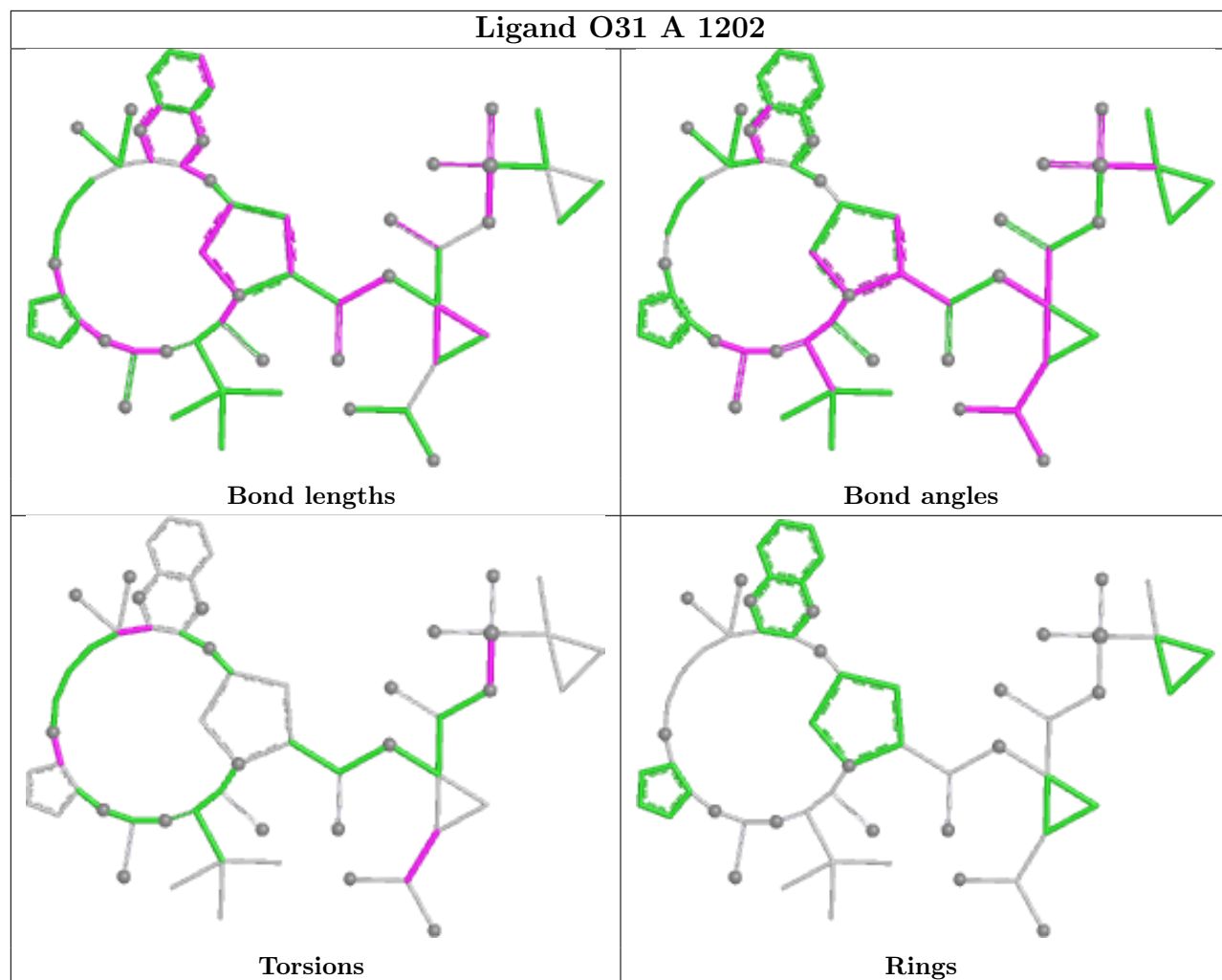
All (6) torsion outliers are listed below:

Mol	Chain	Res	Type	Atoms
3	A	1202	O31	C11-C13-C14-F15
3	A	1202	O31	C11-C13-C14-F16
3	A	1202	O31	C35-C36-O37-C38
3	A	1202	O31	F54-C41-C42-N43
3	A	1202	O31	C09-N08-S05-C02
3	A	1202	O31	F54-C41-C42-C51

There are no ring outliers.

No monomer is involved in short contacts.

The following is a two-dimensional graphical depiction of Mogul quality analysis of bond lengths, bond angles, torsion angles, and ring geometry for all instances of the Ligand of Interest. In addition, ligands with molecular weight > 250 and outliers as shown on the validation Tables will also be included. For torsion angles, if less than 5% of the Mogul distribution of torsion angles is within 10 degrees of the torsion angle in question, then that torsion angle is considered an outlier. Any bond that is central to one or more torsion angles identified as an outlier by Mogul will be highlighted in the graph. For rings, the root-mean-square deviation (RMSD) between the ring in question and similar rings identified by Mogul is calculated over all ring torsion angles. If the average RMSD is greater than 60 degrees and the minimal RMSD between the ring in question and any Mogul-identified rings is also greater than 60 degrees, then that ring is considered an outlier. The outliers are highlighted in purple. The color gray indicates Mogul did not find sufficient equivalents in the CSD to analyse the geometry.



5.7 Other polymers [i](#)

There are no such residues in this entry.

5.8 Polymer linkage issues [i](#)

There are no chain breaks in this entry.

6 Fit of model and data [i](#)

6.1 Protein, DNA and RNA chains [i](#)

In the following table, the column labelled ‘#RSRZ> 2’ contains the number (and percentage) of RSRZ outliers, followed by percent RSRZ outliers for the chain as percentile scores relative to all X-ray entries and entries of similar resolution. The OWAB column contains the minimum, median, 95th percentile and maximum values of the occupancy-weighted average B-factor per residue. The column labelled ‘Q< 0.9’ lists the number of (and percentage) of residues with an average occupancy less than 0.9.

Mol	Chain	Analysed	<RSRZ>	#RSRZ>2	OWAB(Å ²)	Q<0.9
1	A	158/203 (77%)	-0.09	1 (0%) 85 86	18, 28, 37, 55	1 (0%)

All (1) RSRZ outliers are listed below:

Mol	Chain	Res	Type	RSRZ
1	A	1177	THR	3.4

6.2 Non-standard residues in protein, DNA, RNA chains [i](#)

There are no non-standard protein/DNA/RNA residues in this entry.

6.3 Carbohydrates [i](#)

There are no monosaccharides in this entry.

6.4 Ligands [i](#)

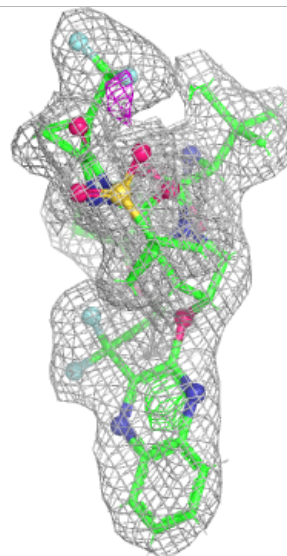
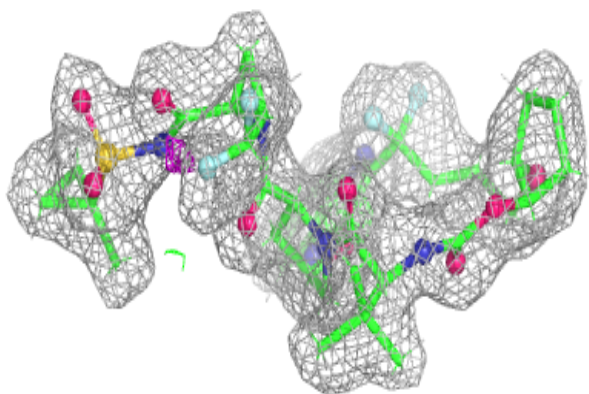
In the following table, the Atoms column lists the number of modelled atoms in the group and the number defined in the chemical component dictionary. The B-factors column lists the minimum, median, 95th percentile and maximum values of B factors of atoms in the group. The column labelled ‘Q< 0.9’ lists the number of atoms with occupancy less than 0.9.

Mol	Type	Chain	Res	Atoms	RSCC	RSR	B-factors(Å ²)	Q<0.9
3	O31	A	1202	58/58	0.95	0.08	18,22,28,29	0
2	ZN	A	1201	1/1	1.00	0.01	20,20,20,20	0

The following is a graphical depiction of the model fit to experimental electron density of all instances of the Ligand of Interest. In addition, ligands with molecular weight > 250 and outliers as shown on the geometry validation Tables will also be included. Each fit is shown from different orientation to approximate a three-dimensional view.

Electron density around O31 A 1202:

$2mF_o-DF_c$ (at 0.7 rmsd) in gray
 mF_o-DF_c (at 3 rmsd) in purple (negative)
and green (positive)



6.5 Other polymers [i](#)

There are no such residues in this entry.