



# Full wwPDB X-ray Structure Validation Report ⓘ

Jun 23, 2024 – 12:09 AM EDT

PDB ID : 6OYF  
Title : The structure of condensation and adenylation domains of teixobactin-producing nonribosomal peptide synthetase Txo1 serine module  
Authors : Tan, K.; Zhou, M.; Jedrzejczak, R.; Babnigg, G.; Joachimiak, A.; Center for Structural Genomics of Infectious Diseases (CSGID)  
Deposited on : 2019-05-14  
Resolution : 2.10 Å(reported)

This is a Full wwPDB X-ray Structure Validation Report for a publicly released PDB entry.

We welcome your comments at [validation@mail.wwpdb.org](mailto:validation@mail.wwpdb.org)

A user guide is available at

<https://www.wwpdb.org/validation/2017/XrayValidationReportHelp>

with specific help available everywhere you see the ⓘ symbol.

The types of validation reports are described at

<http://www.wwpdb.org/validation/2017/FAQs#types>.

---

The following versions of software and data (see [references ⓘ](#)) were used in the production of this report:

MolProbity	:	4.02b-467
Mogul	:	2022.3.0, CSD as543be (2022)
Xtriage (Phenix)	:	1.20.1
EDS	:	2.37.1
Percentile statistics	:	20191225.v01 (using entries in the PDB archive December 25th 2019)
Refmac	:	5.8.0158
CCP4	:	7.0.044 (Gargrove)
Ideal geometry (proteins)	:	Engh & Huber (2001)
Ideal geometry (DNA, RNA)	:	Parkinson et al. (1996)
Validation Pipeline (wwPDB-VP)	:	2.37.1

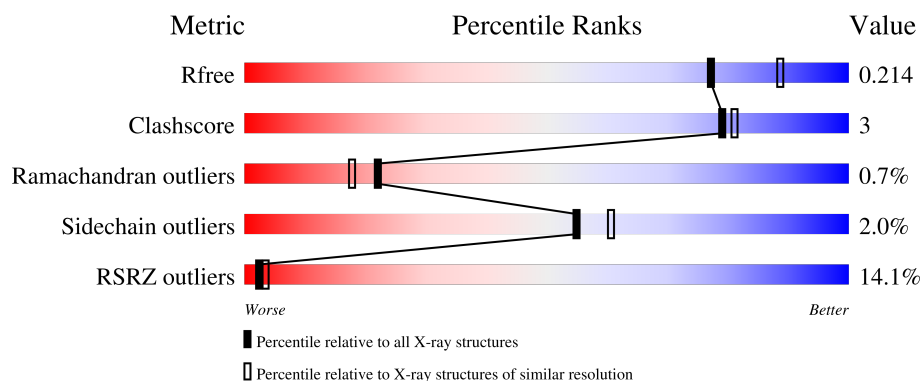
# 1 Overall quality at a glance

The following experimental techniques were used to determine the structure:

*X-RAY DIFFRACTION*


The reported resolution of this entry is 2.10 Å.

Percentile scores (ranging between 0-100) for global validation metrics of the entry are shown in the following graphic. The table shows the number of entries on which the scores are based.



Metric	Whole archive (#Entries)	Similar resolution (#Entries, resolution range(Å))
$R_{free}$	130704	5197 (2.10-2.10)
Clashscore	141614	5710 (2.10-2.10)
Ramachandran outliers	138981	5647 (2.10-2.10)
Sidechain outliers	138945	5648 (2.10-2.10)
RSRZ outliers	127900	5083 (2.10-2.10)

The table below summarises the geometric issues observed across the polymeric chains and their fit to the electron density. The red, orange, yellow and green segments of the lower bar indicate the fraction of residues that contain outliers for  $\geq 3$ , 2, 1 and 0 types of geometric quality criteria respectively. A grey segment represents the fraction of residues that are not modelled. The numeric value for each fraction is indicated below the corresponding segment, with a dot representing fractions  $\leq 5\%$ . The upper red bar (where present) indicates the fraction of residues that have poor fit to the electron density. The numeric value is given above the bar.

Mol	Chain	Length	Quality of chain
1	A	873	

The following table lists non-polymeric compounds, carbohydrate monomers and non-standard residues in protein, DNA, RNA chains that are outliers for geometric or electron-density-fit criteria:

Mol	Type	Chain	Res	Chirality	Geometry	Clashes	Electron density
3	SO4	A	3106	-	-	-	X

## 2 Entry composition [i](#)

There are 7 unique types of molecules in this entry. The entry contains 7035 atoms, of which 0 are hydrogens and 0 are deuteriums.

In the tables below, the ZeroOcc column contains the number of atoms modelled with zero occupancy, the AltConf column contains the number of residues with at least one atom in alternate conformation and the Trace column contains the number of residues modelled with at most 2 atoms.

- Molecule 1 is a protein called Txo1.

Mol	Chain	Residues	Atoms					ZeroOcc	AltConf	Trace
			Total	C	N	O	S			
1	A	854	6527	4124	1186	1196	21	0	7	0

There are 3 discrepancies between the modelled and reference sequences:

Chain	Residue	Modelled	Actual	Comment	Reference
A	2137	SER	-	expression tag	UNP A0A0B5GUD2
A	2138	ASN	-	expression tag	UNP A0A0B5GUD2
A	2139	ALA	-	expression tag	UNP A0A0B5GUD2

- Molecule 2 is FORMIC ACID (three-letter code: FMT) (formula: CH<sub>2</sub>O<sub>2</sub>).



Mol	Chain	Residues	Atoms			ZeroOcc	AltConf
2	A	1	Total	C	O	0	0
			3	1	2		

- Molecule 3 is SULFATE ION (three-letter code: SO4) (formula: O<sub>4</sub>S).



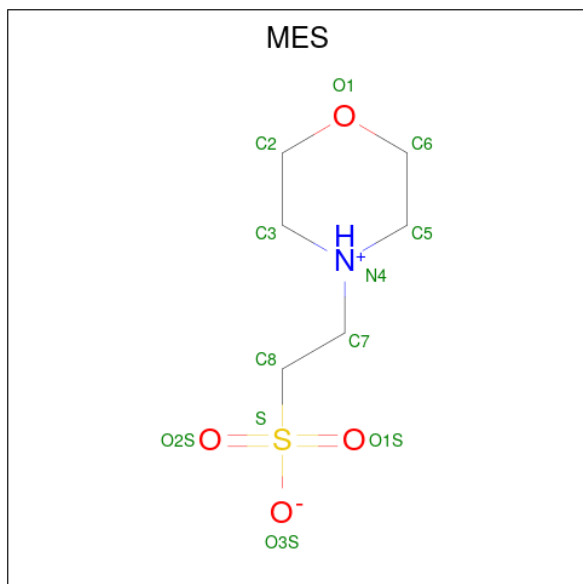
Mol	Chain	Residues	Atoms			ZeroOcc	AltConf
3	A	1	Total	O	S	0	0
			5	4	1		
3	A	1	Total	O	S	0	0
			5	4	1		
3	A	1	Total	O	S	0	0
			5	4	1		
3	A	1	Total	O	S	0	0
			5	4	1		
3	A	1	Total	O	S	0	0
			5	4	1		
3	A	1	Total	O	S	0	0
			5	4	1		
3	A	1	Total	O	S	0	0
			5	4	1		
3	A	1	Total	O	S	0	0
			5	4	1		

- Molecule 4 is 4-(2-HYDROXYETHYL)-1-PIPERAZINE ETHANESULFONIC ACID (three-letter code: EPE) (formula:  $C_8H_{18}N_2O_4S$ ).



Mol	Chain	Residues	Atoms					ZeroOcc	AltConf
4	A	1	Total	C	N	O	S	0	0
			15	8	2	4	1		

- Molecule 5 is 2-(N-MORPHOLINO)-ETHANESULFONIC ACID (three-letter code: MES) (formula:  $C_6H_{13}NO_4S$ ).



Mol	Chain	Residues	Atoms					ZeroOcc	AltConf
5	A	1	Total	C	N	O	S	0	0
			12	6	1	4	1		

- Molecule 6 is GLYCEROL (three-letter code: GOL) (formula:  $C_3H_8O_3$ ).



Mol	Chain	Residues	Atoms			ZeroOcc	AltConf
6	A	1	Total	C	O	0	0
			6	3	3		
6	A	1	Total	C	O	0	0
			6	3	3		

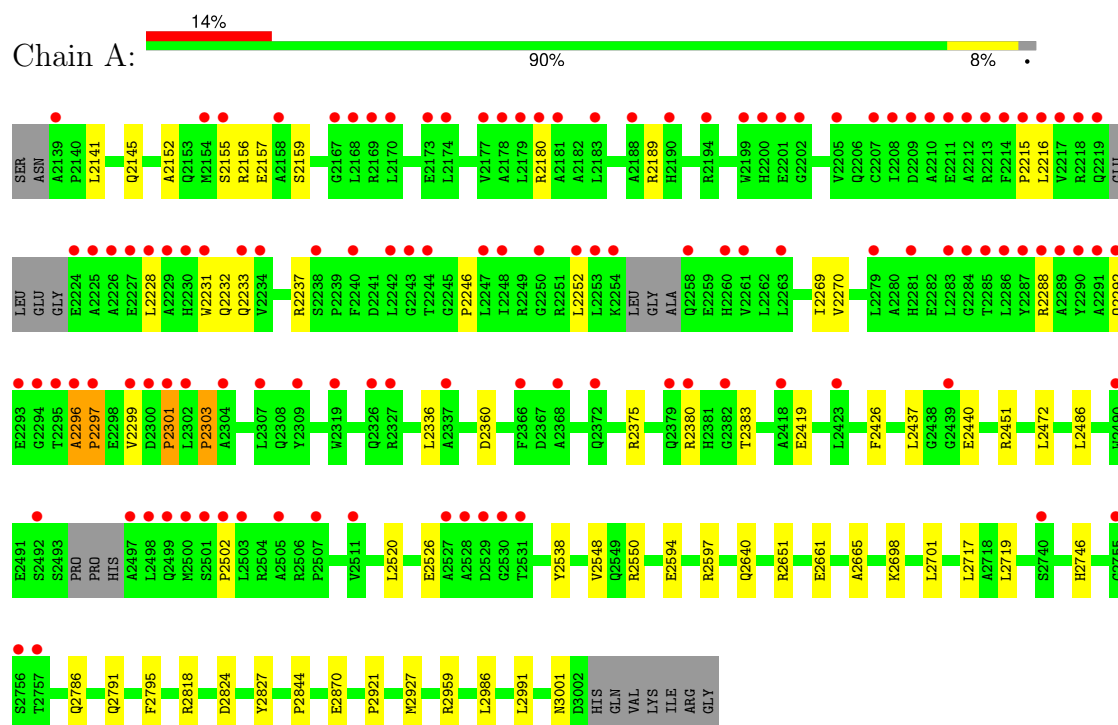
- Molecule 7 is water.

Mol	Chain	Residues	Atoms		ZeroOcc	AltConf
7	A	401	Total	O	0	0
			401	401		

### 3 Residue-property plots [i](#)

These plots are drawn for all protein, RNA, DNA and oligosaccharide chains in the entry. The first graphic for a chain summarises the proportions of the various outlier classes displayed in the second graphic. The second graphic shows the sequence view annotated by issues in geometry and electron density. Residues are color-coded according to the number of geometric quality criteria for which they contain at least one outlier: green = 0, yellow = 1, orange = 2 and red = 3 or more. A red dot above a residue indicates a poor fit to the electron density ( $RSRZ > 2$ ). Stretches of 2 or more consecutive residues without any outlier are shown as a green connector. Residues present in the sample, but not in the model, are shown in grey.

#### • Molecule 1: Txo1



## 4 Data and refinement statistics

Property	Value	Source
Space group	C 1 2 1	Depositor
Cell constants a, b, c, $\alpha$ , $\beta$ , $\gamma$	152.97Å 90.75Å 98.22Å 90.00° 105.99° 90.00°	Depositor
Resolution (Å)	43.15 – 2.10 43.15 – 2.10	Depositor EDS
% Data completeness (in resolution range)	87.8 (43.15-2.10) 87.8 (43.15-2.10)	Depositor EDS
$R_{merge}$	0.06	Depositor
$R_{sym}$	(Not available)	Depositor
$\langle I/\sigma(I) \rangle$ <sup>1</sup>	2.81 (at 2.10Å)	Xtriage
Refinement program	PHENIX (1.13_2998: ???)	Depositor
R, $R_{free}$	0.186 , 0.214 0.187 , 0.214	Depositor DCC
$R_{free}$ test set	3285 reflections (4.96%)	wwPDB-VP
Wilson B-factor (Å <sup>2</sup> )	24.5	Xtriage
Anisotropy	0.174	Xtriage
Bulk solvent $k_{sol}$ (e/Å <sup>3</sup> ), $B_{sol}$ (Å <sup>2</sup> )	0.31 , 54.1	EDS
L-test for twinning <sup>2</sup>	$\langle  L  \rangle = 0.49$ , $\langle L^2 \rangle = 0.32$	Xtriage
Estimated twinning fraction	No twinning to report.	Xtriage
$F_o, F_c$ correlation	0.95	EDS
Total number of atoms	7035	wwPDB-VP
Average B, all atoms (Å <sup>2</sup> )	54.0	wwPDB-VP

Xtriage's analysis on translational NCS is as follows: *The largest off-origin peak in the Patterson function is 5.77% of the height of the origin peak. No significant pseudotranslation is detected.*

<sup>1</sup>Intensities estimated from amplitudes.

<sup>2</sup>Theoretical values of  $\langle |L| \rangle$ ,  $\langle L^2 \rangle$  for acentric reflections are 0.5, 0.333 respectively for untwinned datasets, and 0.375, 0.2 for perfectly twinned datasets.



## 5 Model quality [i](#)

### 5.1 Standard geometry [i](#)

Bond lengths and bond angles in the following residue types are not validated in this section: FMT, SO4, GOL, MES, EPE

The Z score for a bond length (or angle) is the number of standard deviations the observed value is removed from the expected value. A bond length (or angle) with  $|Z| > 5$  is considered an outlier worth inspection. RMSZ is the root-mean-square of all Z scores of the bond lengths (or angles).

Mol	Chain	Bond lengths		Bond angles	
		RMSZ	$\# Z  > 5$	RMSZ	$\# Z  > 5$
1	A	0.24	0/6698	0.42	0/9137

There are no bond length outliers.

There are no bond angle outliers.

There are no chirality outliers.

There are no planarity outliers.

### 5.2 Too-close contacts [i](#)

In the following table, the Non-H and H(model) columns list the number of non-hydrogen atoms and hydrogen atoms in the chain respectively. The H(added) column lists the number of hydrogen atoms added and optimized by MolProbity. The Clashes column lists the number of clashes within the asymmetric unit, whereas Symm-Clashes lists symmetry-related clashes.

Mol	Chain	Non-H	H(model)	H(added)	Clashes	Symm-Clashes
1	A	6527	0	6332	36	0
2	A	3	0	1	1	0
3	A	65	0	0	0	0
4	A	15	0	17	0	0
5	A	12	0	12	2	0
6	A	12	0	16	1	0
7	A	401	0	0	2	0
All	All	7035	0	6378	36	0

The all-atom clashscore is defined as the number of clashes found per 1000 atoms (including hydrogen atoms). The all-atom clashscore for this structure is 3.

All (36) close contacts within the same asymmetric unit are listed below, sorted by their clash magnitude.

Atom-1	Atom-2	Interatomic distance (Å)	Clash overlap (Å)
1:A:2215:PRO:HG3	1:A:2246:PRO:HG3	1.74	0.70
1:A:2746:HIS:HE2	6:A:3117:GOL:H32	1.58	0.68
1:A:2297:PRO:HB2	1:A:2301:PRO:HD3	1.77	0.65
1:A:2383:THR:HG22	1:A:2451:ARG:HB2	1.83	0.60
1:A:2959:ARG:HA	5:A:3116:MES:H82	1.84	0.60
1:A:2296:ALA:HB3	1:A:2297:PRO:HD3	1.87	0.57
1:A:2269:ILE:HG23	1:A:2270:VAL:HG13	1.87	0.57
1:A:2156:ARG:O	1:A:2237:ARG:NH1	2.37	0.56
1:A:2336:LEU:HB2	1:A:2472:LEU:HD21	1.88	0.55
1:A:2189:ARG:NH2	1:A:2303:PRO:O	2.40	0.54
1:A:2824:ASP:HB3	1:A:2827:TYR:HB3	1.90	0.53
1:A:2216:LEU:HD21	1:A:2252:LEU:HB3	1.89	0.53
1:A:2986:LEU:HG	1:A:3001:ASN:HA	1.90	0.52
1:A:2594:GLU:OE1	1:A:2597:ARG:NH1	2.44	0.51
1:A:2538:TYR:CG	1:A:2548:VAL:HG21	2.46	0.50
1:A:2921:PRO:HB3	1:A:2927:MET:HG2	1.92	0.50
1:A:2152:ALA:O	1:A:2155:SER:OG	2.25	0.50
1:A:2550:ARG:HH12	1:A:2991:LEU:HD21	1.78	0.49
1:A:2360:ASP:HB3	1:A:2538:TYR:CZ	2.47	0.49
1:A:2701:LEU:HD23	1:A:2717[B]:LEU:HB3	1.95	0.48
1:A:2141:LEU:HD23	1:A:2145:GLN:HB3	1.95	0.48
1:A:2159:SER:OG	1:A:2237:ARG:NH1	2.46	0.47
1:A:2698:LYS:HD3	2:A:3101:FMT:H	1.97	0.47
1:A:2640:GLN:HG2	1:A:2717[B]:LEU:HD21	1.96	0.46
1:A:2844:PRO:HD2	1:A:2870:GLU:HB2	1.98	0.46
1:A:2550:ARG:NH1	7:A:3217:HOH:O	2.50	0.44
1:A:2228:LEU:O	1:A:2232[A]:GLN:HB2	2.17	0.44
1:A:2665:ALA:HB2	1:A:2719:LEU:HD11	2.00	0.43
1:A:2959:ARG:CZ	5:A:3116:MES:H31	2.49	0.43
1:A:2299:VAL:HA	1:A:2303:PRO:HD2	2.00	0.42
1:A:2486:LEU:HD22	1:A:2520:LEU:HB2	2.01	0.42
1:A:2661:GLU:HB3	1:A:2719:LEU:HG	2.01	0.42
1:A:2818[B]:ARG:NE	7:A:3211:HOH:O	2.47	0.42
1:A:2233:GLN:H	1:A:2233:GLN:HG2	1.66	0.41
1:A:2991:LEU:HD23	1:A:2991:LEU:HA	1.88	0.40
1:A:2375[A]:ARG:NH2	1:A:2526:GLU:OE2	2.53	0.40

There are no symmetry-related clashes.

## 5.3 Torsion angles

### 5.3.1 Protein backbone

In the following table, the Percentiles column shows the percent Ramachandran outliers of the chain as a percentile score with respect to all X-ray entries followed by that with respect to entries of similar resolution.

The Analysed column shows the number of residues for which the backbone conformation was analysed, and the total number of residues.

Mol	Chain	Analysed	Favoured	Allowed	Outliers	Percentiles
1	A	853/873 (98%)	814 (95%)	33 (4%)	6 (1%)	22 18

All (6) Ramachandran outliers are listed below:

Mol	Chain	Res	Type
1	A	2303	PRO
1	A	2297	PRO
1	A	2502	PRO
1	A	2292	GLN
1	A	2296	ALA
1	A	2301	PRO

### 5.3.2 Protein sidechains

In the following table, the Percentiles column shows the percent sidechain outliers of the chain as a percentile score with respect to all X-ray entries followed by that with respect to entries of similar resolution.

The Analysed column shows the number of residues for which the sidechain conformation was analysed, and the total number of residues.

Mol	Chain	Analysed	Rotameric	Outliers	Percentiles
1	A	647/700 (92%)	634 (98%)	13 (2%)	55 60

All (13) residues with a non-rotameric sidechain are listed below:

Mol	Chain	Res	Type
1	A	2157	GLU
1	A	2180	ARG
1	A	2231	TRP
1	A	2288	ARG
1	A	2380	ARG

*Continued on next page...*

*Continued from previous page...*

Mol	Chain	Res	Type
1	A	2419	GLU
1	A	2426	PHE
1	A	2437	LEU
1	A	2440	GLU
1	A	2651	ARG
1	A	2786	GLN
1	A	2791	GLN
1	A	2795	PHE

Sometimes sidechains can be flipped to improve hydrogen bonding and reduce clashes. There are no such sidechains identified.

### 5.3.3 RNA [i](#)

There are no RNA molecules in this entry.

## 5.4 Non-standard residues in protein, DNA, RNA chains [i](#)

There are no non-standard protein/DNA/RNA residues in this entry.

## 5.5 Carbohydrates [i](#)

There are no monosaccharides in this entry.

## 5.6 Ligand geometry [i](#)

18 ligands are modelled in this entry.

In the following table, the Counts columns list the number of bonds (or angles) for which Mogul statistics could be retrieved, the number of bonds (or angles) that are observed in the model and the number of bonds (or angles) that are defined in the Chemical Component Dictionary. The Link column lists molecule types, if any, to which the group is linked. The Z score for a bond length (or angle) is the number of standard deviations the observed value is removed from the expected value. A bond length (or angle) with  $|Z| > 2$  is considered an outlier worth inspection. RMSZ is the root-mean-square of all Z scores of the bond lengths (or angles).

Mol	Type	Chain	Res	Link	Bond lengths			Bond angles		
					Counts	RMSZ	$\# Z  > 2$	Counts	RMSZ	$\# Z  > 2$
3	SO4	A	3106	-	4,4,4	0.24	0	6,6,6	0.07	0
3	SO4	A	3110	-	4,4,4	0.23	0	6,6,6	0.08	0
3	SO4	A	3108	-	4,4,4	0.24	0	6,6,6	0.07	0

Mol	Type	Chain	Res	Link	Bond lengths			Bond angles		
					Counts	RMSZ	# Z  > 2	Counts	RMSZ	# Z  > 2
3	SO4	A	3107	-	4,4,4	0.24	0	6,6,6	0.07	0
3	SO4	A	3114	-	4,4,4	0.23	0	6,6,6	0.08	0
3	SO4	A	3103	-	4,4,4	0.24	0	6,6,6	0.06	0
3	SO4	A	3102	-	4,4,4	0.23	0	6,6,6	0.08	0
3	SO4	A	3113	-	4,4,4	0.23	0	6,6,6	0.08	0
3	SO4	A	3109	-	4,4,4	0.24	0	6,6,6	0.07	0
3	SO4	A	3111	-	4,4,4	0.23	0	6,6,6	0.08	0
3	SO4	A	3104	-	4,4,4	0.23	0	6,6,6	0.07	0
6	GOL	A	3118	-	5,5,5	0.93	0	5,5,5	1.08	0
6	GOL	A	3117	-	5,5,5	0.94	0	5,5,5	1.07	0
4	EPE	A	3115	-	15,15,15	0.81	1 (6%)	19,20,20	1.83	5 (26%)
5	MES	A	3116	-	12,12,12	2.30	1 (8%)	15,16,16	1.94	5 (33%)
2	FMT	A	3101	-	2,2,2	0.74	0	1,1,1	0.24	0
3	SO4	A	3105	-	4,4,4	0.24	0	6,6,6	0.07	0
3	SO4	A	3112	-	4,4,4	0.23	0	6,6,6	0.07	0

In the following table, the Chirals column lists the number of chiral outliers, the number of chiral centers analysed, the number of these observed in the model and the number defined in the Chemical Component Dictionary. Similar counts are reported in the Torsion and Rings columns. '-' means no outliers of that kind were identified.

Mol	Type	Chain	Res	Link	Chirals	Torsions	Rings
5	MES	A	3116	-	-	0/6/14/14	0/1/1/1
6	GOL	A	3118	-	-	2/4/4/4	-
6	GOL	A	3117	-	-	0/4/4/4	-
4	EPE	A	3115	-	-	4/9/19/19	0/1/1/1

All (2) bond length outliers are listed below:

Mol	Chain	Res	Type	Atoms	Z	Observed(Å)	Ideal(Å)
5	A	3116	MES	C8-S	-7.68	1.66	1.77
4	A	3115	EPE	C10-S	2.62	1.81	1.77

All (10) bond angle outliers are listed below:

Mol	Chain	Res	Type	Atoms	Z	Observed(°)	Ideal(°)
4	A	3115	EPE	C5-N4-C3	4.51	118.55	108.84
5	A	3116	MES	C5-N4-C3	4.02	117.49	108.84
4	A	3115	EPE	C7-N4-C5	3.57	120.74	111.24
4	A	3115	EPE	C7-N4-C3	3.27	119.95	111.24
5	A	3116	MES	C6-C5-N4	-3.03	105.51	110.12

*Continued on next page...*

*Continued from previous page...*

Mol	Chain	Res	Type	Atoms	Z	Observed(°)	Ideal(°)
5	A	3116	MES	C7-N4-C5	2.41	117.66	111.24
4	A	3115	EPE	C6-N1-C2	2.12	113.40	108.84
5	A	3116	MES	O1S-S-C8	2.08	109.88	106.73
4	A	3115	EPE	O2S-S-C10	2.08	109.86	106.73
5	A	3116	MES	C7-N4-C3	2.06	116.73	111.24

There are no chirality outliers.

All (6) torsion outliers are listed below:

Mol	Chain	Res	Type	Atoms
4	A	3115	EPE	C9-C10-S-O1S
4	A	3115	EPE	C9-C10-S-O3S
6	A	3118	GOL	O1-C1-C2-C3
6	A	3118	GOL	O1-C1-C2-O2
4	A	3115	EPE	C8-C7-N4-C5
4	A	3115	EPE	C9-C10-S-O2S

There are no ring outliers.

3 monomers are involved in 4 short contacts:

Mol	Chain	Res	Type	Clashes	Symm-Clashes
6	A	3117	GOL	1	0
5	A	3116	MES	2	0
2	A	3101	FMT	1	0

## 5.7 Other polymers [i](#)

There are no such residues in this entry.

## 5.8 Polymer linkage issues [i](#)

There are no chain breaks in this entry.

## 6 Fit of model and data ⓘ

### 6.1 Protein, DNA and RNA chains ⓘ

In the following table, the column labelled ‘#RSRZ> 2’ contains the number (and percentage) of RSRZ outliers, followed by percent RSRZ outliers for the chain as percentile scores relative to all X-ray entries and entries of similar resolution. The OWAB column contains the minimum, median, 95<sup>th</sup> percentile and maximum values of the occupancy-weighted average B-factor per residue. The column labelled ‘Q< 0.9’ lists the number of (and percentage) of residues with an average occupancy less than 0.9.

Mol	Chain	Analysed	<RSRZ>	#RSRZ>2	OWAB(Å <sup>2</sup> )	Q<0.9
1	A	854/873 (97%)	0.52	120 (14%) 2 3	13, 43, 142, 197	0

All (120) RSRZ outliers are listed below:

Mol	Chain	Res	Type	RSRZ
1	A	2301	PRO	10.9
1	A	2174	LEU	10.8
1	A	2179	LEU	10.1
1	A	2296	ALA	8.9
1	A	2225	ALA	8.8
1	A	2155	SER	8.7
1	A	2302	LEU	8.5
1	A	2178	ALA	8.5
1	A	2528	ALA	7.7
1	A	2217	VAL	7.1
1	A	2219	GLN	7.0
1	A	2252	LEU	6.3
1	A	2294	GLY	6.0
1	A	2497	ALA	6.0
1	A	2224	GLU	6.0
1	A	2216	LEU	5.8
1	A	2210	ALA	5.8
1	A	2200	HIS	5.7
1	A	2158	ALA	5.6
1	A	2501	SER	5.4
1	A	2300	ASP	5.3
1	A	2293	GLU	5.3
1	A	2253	LEU	5.3
1	A	2231	TRP	5.2
1	A	2260	HIS	5.2
1	A	2226	ALA	5.1
1	A	2500	MET	5.1

*Continued on next page...*

*Continued from previous page...*

Mol	Chain	Res	Type	RSRZ
1	A	2297	PRO	5.1
1	A	2228	LEU	4.9
1	A	2287	TYR	4.9
1	A	2177	VAL	4.8
1	A	2218	ARG	4.8
1	A	2183	LEU	4.6
1	A	2199	TRP	4.6
1	A	2498	LEU	4.5
1	A	2188	ALA	4.5
1	A	2214	PHE	4.5
1	A	2227	GLU	4.4
1	A	2503	LEU	4.3
1	A	2286	LEU	4.2
1	A	2290	TYR	4.2
1	A	2167	GLY	4.1
1	A	2505	ALA	4.1
1	A	2284	GLY	4.0
1	A	2213	ARG	3.9
1	A	2299	VAL	3.9
1	A	2492	SER	3.9
1	A	2212	ALA	3.8
1	A	2291	ALA	3.7
1	A	2201	GLU	3.7
1	A	2139	ALA	3.7
1	A	2173	GLU	3.7
1	A	2307	LEU	3.7
1	A	2285	THR	3.6
1	A	2170	LEU	3.6
1	A	2511	VAL	3.6
1	A	2242	LEU	3.5
1	A	2208	ILE	3.5
1	A	2261	VAL	3.5
1	A	2507	PRO	3.4
1	A	2248	ILE	3.3
1	A	2243	GLY	3.2
1	A	2211	GLU	3.2
1	A	2181	ALA	3.2
1	A	2281	HIS	3.2
1	A	2233	GLN	3.1
1	A	2755	GLY	3.1
1	A	2234	VAL	3.1
1	A	2292	GLN	3.0

*Continued on next page...*



*Continued from previous page...*

Mol	Chain	Res	Type	RSRZ
1	A	2238	SER	3.0
1	A	2337	ALA	3.0
1	A	2168	LEU	2.9
1	A	2423	LEU	2.9
1	A	2295	THR	2.9
1	A	2380	ARG	2.9
1	A	2202	GLY	2.9
1	A	2250	GLY	2.9
1	A	2499	GLN	2.9
1	A	2154	MET	2.8
1	A	2366	PHE	2.8
1	A	2418	ALA	2.8
1	A	2756	SER	2.8
1	A	2207	CYS	2.8
1	A	2169	ARG	2.8
1	A	2368	ALA	2.7
1	A	2757	THR	2.7
1	A	2289	ALA	2.7
1	A	2180	ARG	2.7
1	A	2288	ARG	2.6
1	A	2258	GLN	2.6
1	A	2502	PRO	2.6
1	A	2327	ARG	2.6
1	A	2304	ALA	2.6
1	A	2190	HIS	2.6
1	A	2230	HIS	2.5
1	A	2194	ARG	2.5
1	A	2319	TRP	2.5
1	A	2372	GLN	2.4
1	A	2279	LEU	2.4
1	A	2530	GLY	2.4
1	A	2244	THR	2.4
1	A	2439	GLY	2.3
1	A	2240	PHE	2.3
1	A	2529	ASP	2.3
1	A	2247	LEU	2.2
1	A	2379	GLN	2.2
1	A	2527	ALA	2.2
1	A	2531	THR	2.2
1	A	2205	VAL	2.2
1	A	2740	SER	2.2
1	A	2490	TRP	2.1

*Continued on next page...*

*Continued from previous page...*

Mol	Chain	Res	Type	RSRZ
1	A	2209	ASP	2.1
1	A	2215	PRO	2.1
1	A	2254	LYS	2.1
1	A	2283	LEU	2.1
1	A	2229	ALA	2.1
1	A	2326	GLN	2.1
1	A	2263	LEU	2.0
1	A	2309	TYR	2.0
1	A	2382	GLY	2.0

## 6.2 Non-standard residues in protein, DNA, RNA chains [i](#)

There are no non-standard protein/DNA/RNA residues in this entry.

## 6.3 Carbohydrates [i](#)

There are no monosaccharides in this entry.

## 6.4 Ligands [i](#)

In the following table, the Atoms column lists the number of modelled atoms in the group and the number defined in the chemical component dictionary. The B-factors column lists the minimum, median, 95<sup>th</sup> percentile and maximum values of B factors of atoms in the group. The column labelled 'Q< 0.9' lists the number of atoms with occupancy less than 0.9.

Mol	Type	Chain	Res	Atoms	RSCC	RSR	B-factors(Å <sup>2</sup> )	Q<0.9
6	GOL	A	3117	6/6	0.66	0.21	71,73,74,74	0
3	SO4	A	3106	5/5	0.74	0.50	152,153,155,156	0
2	FMT	A	3101	3/3	0.77	0.19	65,65,66,67	0
3	SO4	A	3113	5/5	0.78	0.28	121,123,124,125	0
3	SO4	A	3114	5/5	0.79	0.24	65,79,81,84	5
3	SO4	A	3112	5/5	0.81	0.17	130,132,133,133	0
3	SO4	A	3111	5/5	0.82	0.20	110,111,114,118	0
3	SO4	A	3110	5/5	0.83	0.20	66,70,74,83	5
5	MES	A	3116	12/12	0.86	0.24	63,80,86,86	0
6	GOL	A	3118	6/6	0.86	0.16	77,84,86,89	0
3	SO4	A	3109	5/5	0.90	0.14	113,115,116,117	5
3	SO4	A	3104	5/5	0.90	0.17	86,88,90,93	5
3	SO4	A	3107	5/5	0.90	0.17	106,107,109,109	5
3	SO4	A	3108	5/5	0.91	0.24	36,46,50,55	5

*Continued on next page...*

*Continued from previous page...*

Mol	Type	Chain	Res	Atoms	RSCC	RSR	B-factors( $\text{\AA}^2$ )	Q<0.9
3	SO4	A	3105	5/5	0.91	0.25	88,94,96,99	0
4	EPE	A	3115	15/15	0.95	0.14	31,47,69,74	0
3	SO4	A	3102	5/5	0.96	0.09	66,69,76,79	0
3	SO4	A	3103	5/5	0.99	0.09	22,28,30,31	0

## 6.5 Other polymers [i](#)

There are no such residues in this entry.