



wwPDB X-ray Structure Validation Summary Report ⓘ

Mar 19, 2025 – 09:36 AM EDT

PDB ID : 1OUW
Title : Crystal structure of Calystegia sepium agglutinin
Authors : Bourne, Y.; Roig-Zamboni, V.; Barre, A.; Peumans, W.J.; Astoul, C.H.; van Damme, E.J.M.; Rouge, P.
Deposited on : 2003-03-25
Resolution : 1.37 Å(reported)

This is a wwPDB X-ray Structure Validation Summary Report for a publicly released PDB entry.

We welcome your comments at validation@mail.wwpdb.org

A user guide is available at

<https://www.wwpdb.org/validation/2017/XrayValidationReportHelp>

with specific help available everywhere you see the ⓘ symbol.

The types of validation reports are described at

<http://www.wwpdb.org/validation/2017/FAQs#types>.

The following versions of software and data (see [references ⓘ](#)) were used in the production of this report:

MolProbity	:	4.02b-467
Mogul	:	2022.3.0, CSD as543be (2022)
Xtriage (Phenix)	:	1.21
EDS	:	3.0
Percentile statistics	:	20231227.v01 (using entries in the PDB archive December 27th 2023)
CCP4	:	9.0.004 (Gargrove)
Density-Fitness	:	1.0.11
Ideal geometry (proteins)	:	Engh & Huber (2001)
Ideal geometry (DNA, RNA)	:	Parkinson et al. (1996)
Validation Pipeline (wwPDB-VP)	:	2.41.4

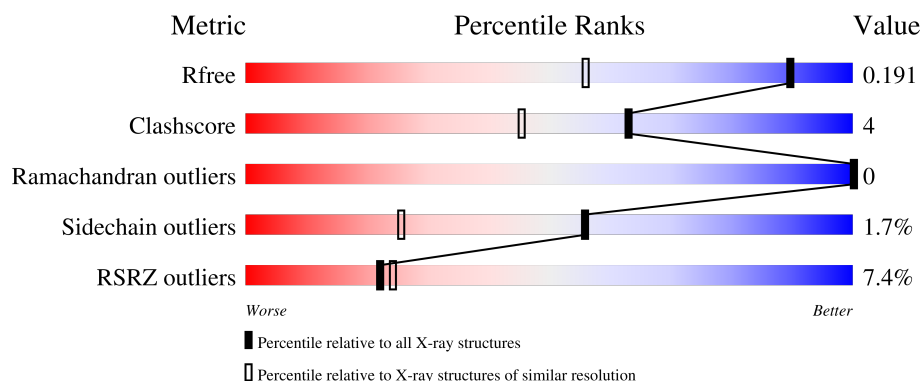
1 Overall quality at a glance

The following experimental techniques were used to determine the structure:

X-RAY DIFFRACTION

The reported resolution of this entry is 1.37 Å.

Percentile scores (ranging between 0-100) for global validation metrics of the entry are shown in the following graphic. The table shows the number of entries on which the scores are based.



Metric	Whole archive (#Entries)	Similar resolution (#Entries, resolution range(Å))
R_{free}	164625	3869 (1.40-1.36)
Clashscore	180529	4183 (1.40-1.36)
Ramachandran outliers	177936	4116 (1.40-1.36)
Sidechain outliers	177891	4115 (1.40-1.36)
RSRZ outliers	164620	3867 (1.40-1.36)

The table below summarises the geometric issues observed across the polymeric chains and their fit to the electron density. The red, orange, yellow and green segments of the lower bar indicate the fraction of residues that contain outliers for ≥ 3 , 2, 1 and 0 types of geometric quality criteria respectively. A grey segment represents the fraction of residues that are not modelled. The numeric value for each fraction is indicated below the corresponding segment, with a dot representing fractions $\leq 5\%$. The upper red bar (where present) indicates the fraction of residues that have poor fit to the electron density. The numeric value is given above the bar.

Mol	Chain	Length	Quality of chain
1	A	152	<div> <div>6%</div> <div> <div></div> <div>90%</div> <div>8%</div> <div></div> </div> <div>.</div> </div>
1	B	152	<div> <div>7%</div> <div> <div></div> <div>91%</div> <div>7%</div> <div></div> </div> <div>..</div> </div>
1	C	152	<div> <div>9%</div> <div> <div></div> <div>89%</div> <div>11%</div> <div></div> </div> </div>
1	D	152	<div> <div>7%</div> <div> <div></div> <div>89%</div> <div>9%</div> <div></div> </div> <div>..</div> </div>

The following table lists non-polymeric compounds, carbohydrate monomers and non-standard

residues in protein, DNA, RNA chains that are outliers for geometric or electron-density-fit criteria:

Mol	Type	Chain	Res	Chirality	Geometry	Clashes	Electron density
1	AYA	B	2	-	X	-	-
4	MLT	C	502	X	-	-	-
4	MLT	D	501	X	-	-	-

2 Entry composition

There are 5 unique types of molecules in this entry. The entry contains 5125 atoms, of which 0 are hydrogens and 0 are deuteriums.

In the tables below, the ZeroOcc column contains the number of atoms modelled with zero occupancy, the AltConf column contains the number of residues with at least one atom in alternate conformation and the Trace column contains the number of residues modelled with at most 2 atoms.

- Molecule 1 is a protein called lectin.

Mol	Chain	Residues	Atoms					ZeroOcc	AltConf	Trace
1	A	149	Total	C	N	O	S	0	3	0
			1111	701	187	221	2			
1	B	150	Total	C	N	O	S	0	3	0
			1116	705	188	221	2			
1	C	152	Total	C	N	O	S	0	1	0
			1120	706	189	223	2			
1	D	151	Total	C	N	O	S	0	1	0
			1115	701	189	223	2			

There are 4 discrepancies between the modelled and reference sequences:

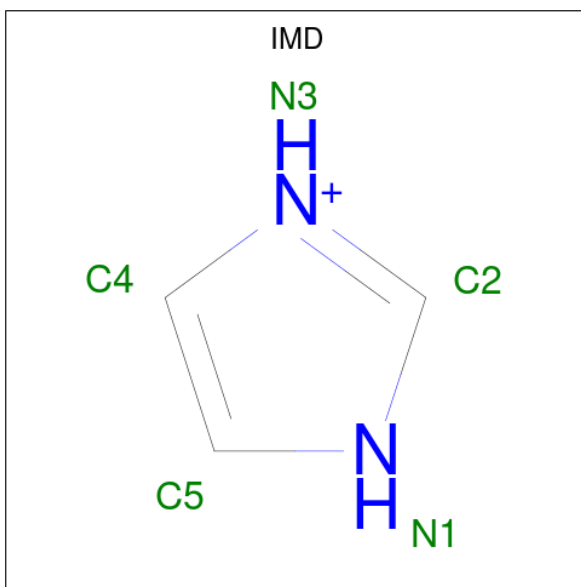
Chain	Residue	Modelled	Actual	Comment	Reference
A	2	AYA	ALA	modified residue	UNP P93114
B	2	AYA	ALA	modified residue	UNP P93114
C	2	AYA	ALA	modified residue	UNP P93114
D	2	AYA	ALA	modified residue	UNP P93114

- Molecule 2 is 1,2-ETHANEDIOL (three-letter code: EDO) (formula: C₂H₆O₂).



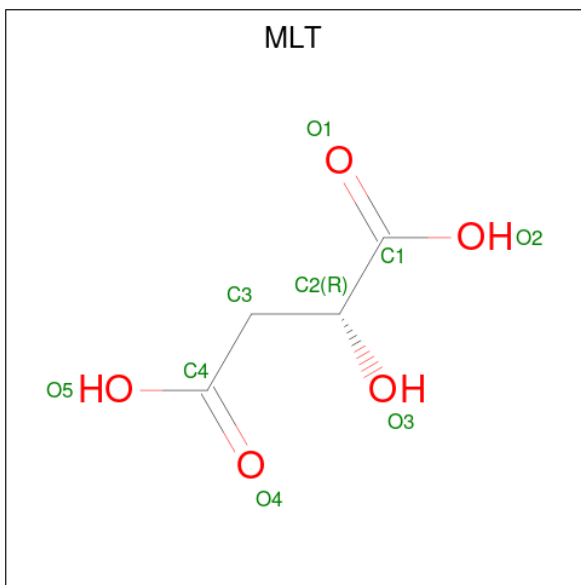
Mol	Chain	Residues	Atoms			ZeroOcc	AltConf
2	A	1	Total	C	O	0	0
			4	2	2		
2	A	1	Total	C	O	0	0
			4	2	2		
2	B	1	Total	C	O	0	0
			4	2	2		
2	B	1	Total	C	O	0	0
			4	2	2		
2	C	1	Total	C	O	0	0
			4	2	2		
2	D	1	Total	C	O	0	0
			4	2	2		

- Molecule 3 is IMIDAZOLE (three-letter code: IMD) (formula: $C_3H_5N_2$).



Mol	Chain	Residues	Atoms			ZeroOcc	AltConf
3	A	1	Total	C	N	0	0
			5	3	2		
3	A	1	Total	C	N	0	0
			5	3	2		
3	B	1	Total	C	N	0	0
			5	3	2		
3	B	1	Total	C	N	0	0
			5	3	2		

- Molecule 4 is D-MALATE (three-letter code: MLT) (formula: $C_4H_6O_5$).



Mol	Chain	Residues	Atoms			ZeroOcc	AltConf
4	C	1	Total	C	O	0	0
			9	4	5		
4	D	1	Total	C	O	0	0
			9	4	5		

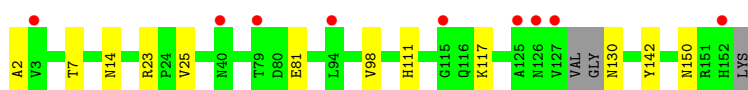
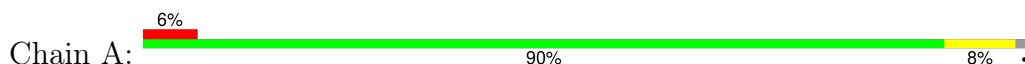
- Molecule 5 is water.

Mol	Chain	Residues	Atoms		ZeroOcc	AltConf
5	A	145	Total	O	0	0
			145	145		
5	B	152	Total	O	0	0
			152	152		
5	C	152	Total	O	0	0
			152	152		
5	D	140	Total	O	0	0
			140	140		

3 Residue-property plots [i](#)

These plots are drawn for all protein, RNA, DNA and oligosaccharide chains in the entry. The first graphic for a chain summarises the proportions of the various outlier classes displayed in the second graphic. The second graphic shows the sequence view annotated by issues in geometry and electron density. Residues are color-coded according to the number of geometric quality criteria for which they contain at least one outlier: green = 0, yellow = 1, orange = 2 and red = 3 or more. A red dot above a residue indicates a poor fit to the electron density ($RSRZ > 2$). Stretches of 2 or more consecutive residues without any outlier are shown as a green connector. Residues present in the sample, but not in the model, are shown in grey.

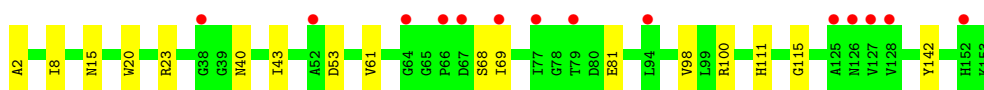
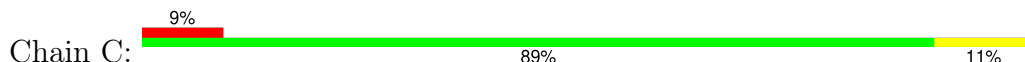
- Molecule 1: lectin



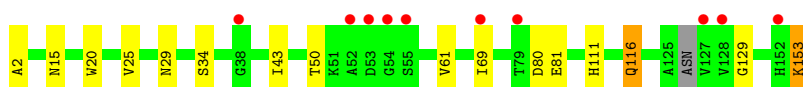
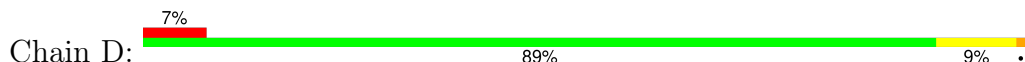
- Molecule 1: lectin



- Molecule 1: lectin



- Molecule 1: lectin



4 Data and refinement statistics

Property	Value	Source
Space group	P 1	Depositor
Cell constants a, b, c, α , β , γ	30.56Å 51.79Å 79.78Å 104.99° 94.36° 94.85°	Depositor
Resolution (Å)	25.00 – 1.37 25.00 – 1.37	Depositor EDS
% Data completeness (in resolution range)	94.0 (25.00-1.37) 93.2 (25.00-1.37)	Depositor EDS
R_{merge}	(Not available)	Depositor
R_{sym}	0.02	Depositor
$\langle I/\sigma(I) \rangle$ ¹	4.04 (at 1.37Å)	Xtriage
Refinement program	REFMAC 5.1.24	Depositor
R, R_{free}	0.153 , 0.180 0.164 , 0.191	Depositor DCC
R_{free} test set	1827 reflections (1.99%)	wwPDB-VP
Wilson B-factor (Å ²)	13.1	Xtriage
Anisotropy	0.580	Xtriage
Bulk solvent k_{sol} (e/Å ³), B_{sol} (Å ²)	0.38 , 41.6	EDS
L-test for twinning ²	$\langle L \rangle = 0.50$, $\langle L^2 \rangle = 0.33$	Xtriage
Estimated twinning fraction	No twinning to report.	Xtriage
F_o, F_c correlation	0.96	EDS
Total number of atoms	5125	wwPDB-VP
Average B, all atoms (Å ²)	19.0	wwPDB-VP

Xtriage's analysis on translational NCS is as follows: *The analyses of the Patterson function reveals a significant off-origin peak that is 21.39 % of the origin peak, indicating pseudo-translational symmetry. The chance of finding a peak of this or larger height randomly in a structure without pseudo-translational symmetry is equal to 7.0791e-03. The detected translational NCS is most likely also responsible for the elevated intensity ratio.*

¹Intensities estimated from amplitudes.

²Theoretical values of $\langle |L| \rangle$, $\langle L^2 \rangle$ for acentric reflections are 0.5, 0.333 respectively for untwinned datasets, and 0.375, 0.2 for perfectly twinned datasets.

5 Model quality [i](#)

5.1 Standard geometry [i](#)

Bond lengths and bond angles in the following residue types are not validated in this section: AYA, IMD, EDO, MLT

The Z score for a bond length (or angle) is the number of standard deviations the observed value is removed from the expected value. A bond length (or angle) with $|Z| > 5$ is considered an outlier worth inspection. RMSZ is the root-mean-square of all Z scores of the bond lengths (or angles).

Mol	Chain	Bond lengths		Bond angles	
		RMSZ	$\# Z > 5$	RMSZ	$\# Z > 5$
1	A	0.53	0/1140	0.77	0/1550
1	B	0.52	0/1146	0.74	1/1557 (0.1%)
1	C	0.56	0/1141	0.79	3/1550 (0.2%)
1	D	0.48	0/1136	0.75	1/1542 (0.1%)
All	All	0.52	0/4563	0.76	5/6199 (0.1%)

There are no bond length outliers.

All (5) bond angle outliers are listed below:

Mol	Chain	Res	Type	Atoms	Z	Observed(°)	Ideal(°)
1	C	100	ARG	NE-CZ-NH1	6.83	123.72	120.30
1	C	53	ASP	CB-CG-OD2	6.29	123.96	118.30
1	C	100	ARG	NE-CZ-NH2	-6.17	117.22	120.30
1	D	80	ASP	CB-CG-OD2	5.48	123.24	118.30
1	B	144	ASP	CB-CG-OD2	5.38	123.15	118.30

There are no chirality outliers.

There are no planarity outliers.

5.2 Too-close contacts [i](#)

In the following table, the Non-H and H(model) columns list the number of non-hydrogen atoms and hydrogen atoms in the chain respectively. The H(added) column lists the number of hydrogen atoms added and optimized by MolProbity. The Clashes column lists the number of clashes within the asymmetric unit, whereas Symm-Clashes lists symmetry-related clashes.

Mol	Chain	Non-H	H(model)	H(added)	Clashes	Symm-Clashes
1	A	1111	0	1059	7	0
1	B	1116	0	1055	10	0

Continued on next page...

Continued from previous page...

Mol	Chain	Non-H	H(model)	H(added)	Clashes	Symm-Clashes
1	C	1120	0	1069	7	0
1	D	1115	0	1056	11	0
2	A	8	0	12	0	0
2	B	12	0	18	0	0
2	C	8	0	12	0	0
2	D	8	0	12	1	0
3	A	10	0	10	0	0
3	B	10	0	10	0	0
4	C	9	0	4	0	0
4	D	9	0	4	0	0
5	A	145	0	0	4	0
5	B	152	0	0	5	1
5	C	152	0	0	2	0
5	D	140	0	0	1	0
All	All	5125	0	4321	35	1

The all-atom clashscore is defined as the number of clashes found per 1000 atoms (including hydrogen atoms). The all-atom clashscore for this structure is 4.

The worst 5 of 35 close contacts within the same asymmetric unit are listed below, sorted by their clash magnitude.

Atom-1	Atom-2	Interatomic distance (Å)	Clash overlap (Å)
1:D:43:ILE:HD11	1:D:69:ILE:HD13	1.48	0.92
1:B:51:LYS:C	5:B:1064:HOH:O	2.10	0.89
1:A:130:ASN:HD21	1:A:150:ASN:HB3	1.63	0.64
1:D:34:SER:HB3	1:D:69:ILE:HD12	1.80	0.64
1:C:8:ILE:HD12	2:D:517:EDO:H21	1.79	0.63

All (1) symmetry-related close contacts are listed below. The label for Atom-2 includes the symmetry operator and encoded unit-cell translations to be applied.

Atom-1	Atom-2	Interatomic distance (Å)	Clash overlap (Å)
5:B:951:HOH:O	5:B:952:HOH:O[1_655]	2.19	0.01

5.3 Torsion angles

5.3.1 Protein backbone

In the following table, the Percentiles column shows the percent Ramachandran outliers of the chain as a percentile score with respect to all X-ray entries followed by that with respect to entries of similar resolution.

The Analysed column shows the number of residues for which the backbone conformation was analysed, and the total number of residues.

Mol	Chain	Analysed	Favoured	Allowed	Outliers	Percentiles	
1	A	148/152 (97%)	146 (99%)	2 (1%)	0	100	100
1	B	149/152 (98%)	147 (99%)	2 (1%)	0	100	100
1	C	151/152 (99%)	150 (99%)	1 (1%)	0	100	100
1	D	148/152 (97%)	146 (99%)	2 (1%)	0	100	100
All	All	596/608 (98%)	589 (99%)	7 (1%)	0	100	100

There are no Ramachandran outliers to report.

5.3.2 Protein sidechains

In the following table, the Percentiles column shows the percent sidechain outliers of the chain as a percentile score with respect to all X-ray entries followed by that with respect to entries of similar resolution.

The Analysed column shows the number of residues for which the sidechain conformation was analysed, and the total number of residues.

Mol	Chain	Analysed	Rotameric	Outliers	Percentiles	
1	A	119/120 (99%)	117 (98%)	2 (2%)	56	25
1	B	118/120 (98%)	117 (99%)	1 (1%)	79	57
1	C	117/120 (98%)	114 (97%)	3 (3%)	41	11
1	D	117/120 (98%)	115 (98%)	2 (2%)	56	25
All	All	471/480 (98%)	463 (98%)	8 (2%)	56	25

5 of 8 residues with a non-rotameric sidechain are listed below:

Mol	Chain	Res	Type
1	D	153	LYS
1	D	116	GLN
1	C	23	ARG

Continued on next page...

Continued from previous page...

Mol	Chain	Res	Type
1	C	15	ASN
1	C	68	SER

Sometimes sidechains can be flipped to improve hydrogen bonding and reduce clashes. 5 of 11 such sidechains are listed below:

Mol	Chain	Res	Type
1	C	111	HIS
1	D	15	ASN
1	D	116	GLN
1	D	111	HIS
1	C	15	ASN

5.3.3 RNA ⓘ

There are no RNA molecules in this entry.

5.4 Non-standard residues in protein, DNA, RNA chains ⓘ

4 non-standard protein/DNA/RNA residues are modelled in this entry.

In the following table, the Counts columns list the number of bonds (or angles) for which Mogul statistics could be retrieved, the number of bonds (or angles) that are observed in the model and the number of bonds (or angles) that are defined in the Chemical Component Dictionary. The Link column lists molecule types, if any, to which the group is linked. The Z score for a bond length (or angle) is the number of standard deviations the observed value is removed from the expected value. A bond length (or angle) with $|Z| > 2$ is considered an outlier worth inspection. RMSZ is the root-mean-square of all Z scores of the bond lengths (or angles).

Mol	Type	Chain	Res	Link	Bond lengths			Bond angles		
					Counts	RMSZ	$\# Z > 2$	Counts	RMSZ	$\# Z > 2$
1	AYA	B	2	1	6,7,8	1.59	2 (33%)	6,8,10	3.94	4 (66%)
1	AYA	A	2	1	6,7,8	1.53	1 (16%)	6,8,10	3.01	3 (50%)
1	AYA	C	2	1	6,7,8	1.29	1 (16%)	6,8,10	2.91	4 (66%)
1	AYA	D	2	1	6,7,8	1.38	1 (16%)	6,8,10	2.33	2 (33%)

In the following table, the Chirals column lists the number of chiral outliers, the number of chiral centers analysed, the number of these observed in the model and the number defined in the Chemical Component Dictionary. Similar counts are reported in the Torsion and Rings columns. '–' means no outliers of that kind were identified.

Mol	Type	Chain	Res	Link	Chirals	Torsions	Rings
1	AYA	B	2	1	-	3/5/6/8	-
1	AYA	A	2	1	-	4/5/6/8	-
1	AYA	C	2	1	-	1/5/6/8	-
1	AYA	D	2	1	-	2/5/6/8	-

All (5) bond length outliers are listed below:

Mol	Chain	Res	Type	Atoms	Z	Observed(Å)	Ideal(Å)
1	D	2	AYA	O-C	2.69	1.30	1.20
1	A	2	AYA	O-C	2.65	1.30	1.20
1	B	2	AYA	CA-N	2.60	1.49	1.46
1	C	2	AYA	O-C	2.57	1.29	1.20
1	B	2	AYA	O-C	2.53	1.29	1.20

The worst 5 of 13 bond angle outliers are listed below:

Mol	Chain	Res	Type	Atoms	Z	Observed(°)	Ideal(°)
1	B	2	AYA	OT-CT-CM	-5.91	111.53	122.05
1	B	2	AYA	OT-CT-N	-5.29	112.62	121.98
1	A	2	AYA	CM-CT-N	-4.48	108.68	116.12
1	B	2	AYA	CA-N-CT	4.43	127.22	121.50
1	A	2	AYA	OT-CT-CM	-4.35	114.32	122.05

There are no chirality outliers.

5 of 10 torsion outliers are listed below:

Mol	Chain	Res	Type	Atoms
1	A	2	AYA	CM-CT-N-CA
1	A	2	AYA	O-C-CA-CB
1	B	2	AYA	OT-CT-N-CA
1	B	2	AYA	CM-CT-N-CA
1	A	2	AYA	OT-CT-N-CA

There are no ring outliers.

1 monomer is involved in 1 short contact:

Mol	Chain	Res	Type	Clashes	Symm-Clashes
1	B	2	AYA	1	0

5.5 Carbohydrates [i](#)

There are no oligosaccharides in this entry.

5.6 Ligand geometry [i](#)

15 ligands are modelled in this entry.

In the following table, the Counts columns list the number of bonds (or angles) for which Mogul statistics could be retrieved, the number of bonds (or angles) that are observed in the model and the number of bonds (or angles) that are defined in the Chemical Component Dictionary. The Link column lists molecule types, if any, to which the group is linked. The Z score for a bond length (or angle) is the number of standard deviations the observed value is removed from the expected value. A bond length (or angle) with $|Z| > 2$ is considered an outlier worth inspection. RMSZ is the root-mean-square of all Z scores of the bond lengths (or angles).

Mol	Type	Chain	Res	Link	Bond lengths			Bond angles		
					Counts	RMSZ	$\# Z > 2$	Counts	RMSZ	$\# Z > 2$
2	EDO	C	511	-	3,3,3	0.36	0	2,2,2	0.33	0
2	EDO	B	513	-	3,3,3	0.26	0	2,2,2	0.64	0
4	MLT	D	501	-	8,8,8	1.55	2 (25%)	10,10,10	1.79	4 (40%)
2	EDO	D	512	-	3,3,3	0.32	0	2,2,2	0.43	0
2	EDO	A	510	-	3,3,3	0.29	0	2,2,2	0.60	0
2	EDO	C	518	-	3,3,3	0.33	0	2,2,2	0.29	0
3	IMD	B	522	-	3,5,5	0.36	0	4,5,5	0.54	0
2	EDO	B	514	-	3,3,3	0.23	0	2,2,2	0.50	0
3	IMD	A	523	-	3,5,5	0.40	0	4,5,5	0.58	0
2	EDO	D	517	-	3,3,3	0.23	0	2,2,2	0.78	0
4	MLT	C	502	-	8,8,8	1.61	2 (25%)	10,10,10	1.71	4 (40%)
3	IMD	A	521	-	3,5,5	0.37	0	4,5,5	0.62	0
3	IMD	B	520	-	3,5,5	0.36	0	4,5,5	0.56	0
2	EDO	A	515	-	3,3,3	0.26	0	2,2,2	0.16	0
2	EDO	B	516	-	3,3,3	0.34	0	2,2,2	0.35	0

In the following table, the Chirals column lists the number of chiral outliers, the number of chiral centers analysed, the number of these observed in the model and the number defined in the Chemical Component Dictionary. Similar counts are reported in the Torsion and Rings columns. '-' means no outliers of that kind were identified.

Mol	Type	Chain	Res	Link	Chirals	Torsions	Rings
2	EDO	C	511	-	-	0/1/1/1	-
2	EDO	B	513	-	-	0/1/1/1	-
4	MLT	D	501	-	1/1/3/3	0/8/8/8	-
2	EDO	D	512	-	-	0/1/1/1	-

Continued on next page...

Continued from previous page...

Mol	Type	Chain	Res	Link	Chirals	Torsions	Rings
2	EDO	A	510	-	-	0/1/1/1	-
2	EDO	C	518	-	-	0/1/1/1	-
3	IMD	B	522	-	-	-	0/1/1/1
4	MLT	C	502	-	1/1/3/3	0/8/8/8	-
2	EDO	B	514	-	-	0/1/1/1	-
2	EDO	D	517	-	-	0/1/1/1	-
3	IMD	A	523	-	-	-	0/1/1/1
3	IMD	A	521	-	-	-	0/1/1/1
3	IMD	B	520	-	-	-	0/1/1/1
2	EDO	A	515	-	-	1/1/1/1	-
2	EDO	B	516	-	-	0/1/1/1	-

All (4) bond length outliers are listed below:

Mol	Chain	Res	Type	Atoms	Z	Observed(Å)	Ideal(Å)
4	C	502	MLT	O1-C1	3.37	1.32	1.22
4	D	501	MLT	O1-C1	3.04	1.31	1.22
4	C	502	MLT	O4-C4	2.82	1.31	1.22
4	D	501	MLT	O4-C4	2.77	1.31	1.22

The worst 5 of 8 bond angle outliers are listed below:

Mol	Chain	Res	Type	Atoms	Z	Observed(°)	Ideal(°)
4	D	501	MLT	O2-C1-O1	-3.23	116.75	124.08
4	C	502	MLT	O2-C1-O1	-2.88	117.54	124.08
4	C	502	MLT	O2-C1-C2	2.67	118.39	112.74
4	D	501	MLT	O2-C1-C2	2.65	118.35	112.74
4	C	502	MLT	O5-C4-O4	-2.58	116.69	123.33

All (2) chirality outliers are listed below:

Mol	Chain	Res	Type	Atom
4	C	502	MLT	C2
4	D	501	MLT	C2

All (1) torsion outliers are listed below:

Mol	Chain	Res	Type	Atoms
2	A	515	EDO	O1-C1-C2-O2

There are no ring outliers.

1 monomer is involved in 1 short contact:

Mol	Chain	Res	Type	Clashes	Symm-Clashes
2	D	517	EDO	1	0

5.7 Other polymers [i](#)

There are no such residues in this entry.

5.8 Polymer linkage issues [i](#)

There are no chain breaks in this entry.

6 Fit of model and data [i](#)

6.1 Protein, DNA and RNA chains [i](#)

In the following table, the column labelled ‘#RSRZ > 2’ contains the number (and percentage) of RSRZ outliers, followed by percent RSRZ outliers for the chain as percentile scores relative to all X-ray entries and entries of similar resolution. The OWAB column contains the minimum, median, 95th percentile and maximum values of the occupancy-weighted average B-factor per residue. The column labelled ‘Q < 0.9’ lists the number of (and percentage) of residues with an average occupancy less than 0.9.

Mol	Chain	Analysed	<RSRZ>	#RSRZ>2	OWAB(Å ²)	Q<0.9
1	A	148/152 (97%)	0.59	9 (6%) 28 31	10, 15, 26, 37	3 (2%)
1	B	149/152 (98%)	0.61	11 (7%) 22 24	9, 15, 28, 36	3 (2%)
1	C	151/152 (99%)	0.56	14 (9%) 16 16	10, 15, 29, 36	1 (0%)
1	D	150/152 (98%)	0.73	10 (6%) 25 28	10, 18, 29, 37	1 (0%)
All	All	598/608 (98%)	0.62	44 (7%) 22 24	9, 16, 29, 37	8 (1%)

The worst 5 of 44 RSRZ outliers are listed below:

Mol	Chain	Res	Type	RSRZ
1	A	127	VAL	7.7
1	B	127	VAL	5.5
1	B	128	VAL	5.3
1	D	128	VAL	5.3
1	D	127	VAL	4.9

6.2 Non-standard residues in protein, DNA, RNA chains [i](#)

In the following table, the Atoms column lists the number of modelled atoms in the group and the number defined in the chemical component dictionary. The B-factors column lists the minimum, median, 95th percentile and maximum values of B factors of atoms in the group. The column labelled ‘Q < 0.9’ lists the number of atoms with occupancy less than 0.9.

Mol	Type	Chain	Res	Atoms	RSCC	RSR	B-factors(Å ²)	Q<0.9
1	AYA	B	2	8/9	0.84	0.17	21,24,26,33	0
1	AYA	A	2	8/9	0.88	0.11	19,21,23,26	0
1	AYA	D	2	8/9	0.90	0.11	17,18,19,20	0
1	AYA	C	2	8/9	0.94	0.10	20,23,27,28	0

6.3 Carbohydrates [i](#)

There are no monosaccharides in this entry.

6.4 Ligands [i](#)

In the following table, the Atoms column lists the number of modelled atoms in the group and the number defined in the chemical component dictionary. The B-factors column lists the minimum, median, 95th percentile and maximum values of B factors of atoms in the group. The column labelled 'Q< 0.9' lists the number of atoms with occupancy less than 0.9.

Mol	Type	Chain	Res	Atoms	RSCC	RSR	B-factors(Å ²)	Q<0.9
3	IMD	B	522	5/5	0.77	0.14	33,33,34,34	0
3	IMD	A	523	5/5	0.82	0.14	39,39,39,40	0
2	EDO	D	517	4/4	0.82	0.12	33,36,38,40	0
3	IMD	B	520	5/5	0.89	0.12	24,24,25,26	0
3	IMD	A	521	5/5	0.90	0.09	30,30,31,31	0
2	EDO	B	514	4/4	0.90	0.11	28,29,29,29	0
2	EDO	C	518	4/4	0.90	0.11	21,26,28,31	0
2	EDO	A	515	4/4	0.90	0.11	31,32,34,35	0
2	EDO	B	516	4/4	0.91	0.15	16,25,26,26	0
2	EDO	A	510	4/4	0.92	0.13	19,23,25,25	0
2	EDO	B	513	4/4	0.93	0.15	19,24,24,25	0
4	MLT	C	502	9/9	0.93	0.10	20,21,23,25	0
4	MLT	D	501	9/9	0.93	0.10	19,20,21,23	0
2	EDO	D	512	4/4	0.97	0.10	16,17,17,17	0
2	EDO	C	511	4/4	0.97	0.10	15,15,16,17	0

6.5 Other polymers [i](#)

There are no such residues in this entry.