



# Full wwPDB X-ray Structure Validation Report ⓘ

Jul 28, 2025 – 01:02 PM EDT

PDB ID : 9OTW / pdb\_00009otw  
Title : Influenza A Virus Nucleoprotein(8-498)NP complex with 5-(4-{{(2R)-6,6-dimethyl-1,4-dioxan-2-yl}methoxy}phenyl)-2-oxo-6-(trifluoromethyl)-1,2-dihydro pyridine-3-carboxamide (compound 13)  
Authors : Mamo, M.  
Deposited on : 2025-05-27  
Resolution : 2.24 Å(reported)

This is a Full wwPDB X-ray Structure Validation Report for a publicly released PDB entry.

We welcome your comments at [validation@mail.wwpdb.org](mailto:validation@mail.wwpdb.org)

A user guide is available at

<https://www.wwpdb.org/validation/2017/XrayValidationReportHelp>

with specific help available everywhere you see the ⓘ symbol.

The types of validation reports are described at

<http://www.wwpdb.org/validation/2017/FAQs#types>.

---

The following versions of software and data (see [references ⓘ](#)) were used in the production of this report:

MolProbity : 4-5-2 with Phenix2.0rc1  
Mogul : 2022.3.0, CSD as543be (2022)  
Xtriage (Phenix) : 2.0rc1  
EDS : 3.0  
buster-report : 1.1.7 (2018)  
Percentile statistics : 20231227.v01 (using entries in the PDB archive December 27th 2023)  
CCP4 : 9.0.006 (Gargrove)  
Density-Fitness : 1.0.12  
Ideal geometry (proteins) : Engh & Huber (2001)  
Ideal geometry (DNA, RNA) : Parkinson et al. (1996)  
Validation Pipeline (wwPDB-VP) : 2.45.1

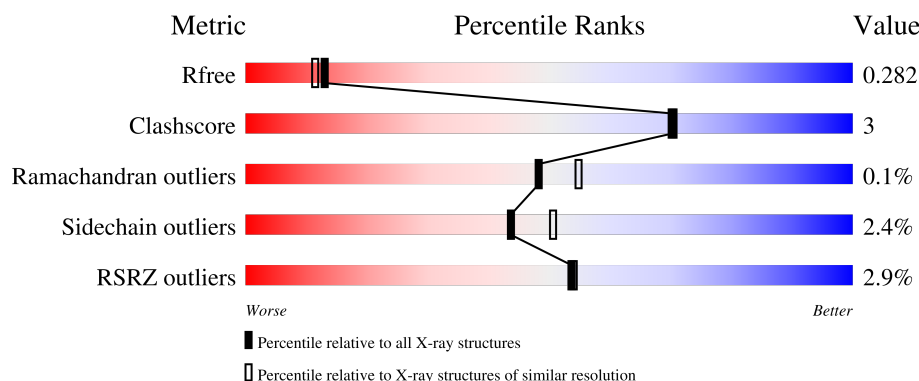
# 1 Overall quality at a glance

The following experimental techniques were used to determine the structure:

*X-RAY DIFFRACTION*

The reported resolution of this entry is 2.24 Å.

Percentile scores (ranging between 0-100) for global validation metrics of the entry are shown in the following graphic. The table shows the number of entries on which the scores are based.



Metric	Whole archive (#Entries)	Similar resolution (#Entries, resolution range(Å))
$R_{free}$	164625	3139 (2.26-2.22)
Clashscore	180529	3381 (2.26-2.22)
Ramachandran outliers	177936	3334 (2.26-2.22)
Sidechain outliers	177891	3335 (2.26-2.22)
RSRZ outliers	164620	3138 (2.26-2.22)

The table below summarises the geometric issues observed across the polymeric chains and their fit to the electron density. The red, orange, yellow and green segments of the lower bar indicate the fraction of residues that contain outliers for  $\geq 3$ , 2, 1 and 0 types of geometric quality criteria respectively. A grey segment represents the fraction of residues that are not modelled. The numeric value for each fraction is indicated below the corresponding segment, with a dot representing fractions  $\leq 5\%$ . The upper red bar (where present) indicates the fraction of residues that have poor fit to the electron density. The numeric value is given above the bar.

Mol	Chain	Length	Quality of chain
1	A	498	
1	B	498	

## 2 Entry composition

There are 4 unique types of molecules in this entry. The entry contains 7071 atoms, of which 0 are hydrogens and 0 are deuteriums.

In the tables below, the ZeroOcc column contains the number of atoms modelled with zero occupancy, the AltConf column contains the number of residues with at least one atom in alternate conformation and the Trace column contains the number of residues modelled with at most 2 atoms.

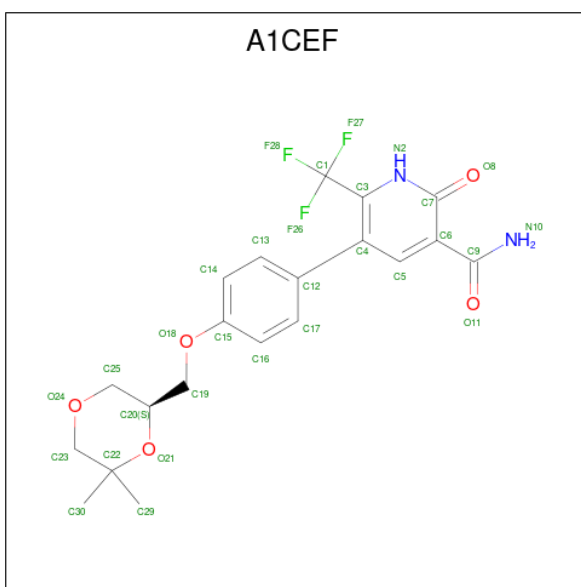
- Molecule 1 is a protein called Nucleoprotein.

Mol	Chain	Residues	Atoms					ZeroOcc	AltConf	Trace
1	A	457	Total	C	N	O	S	0	0	0
			3521	2191	639	662	29			
1	B	429	Total	C	N	O	S	0	0	0
			3321	2068	602	624	27			

There are 14 discrepancies between the modelled and reference sequences:

Chain	Residue	Modelled	Actual	Comment	Reference
A	7	MET	-	initiating methionine	UNP A0A343VTP6
A	499	HIS	-	expression tag	UNP A0A343VTP6
A	500	HIS	-	expression tag	UNP A0A343VTP6
A	501	HIS	-	expression tag	UNP A0A343VTP6
A	502	HIS	-	expression tag	UNP A0A343VTP6
A	503	HIS	-	expression tag	UNP A0A343VTP6
A	504	HIS	-	expression tag	UNP A0A343VTP6
B	7	MET	-	initiating methionine	UNP A0A343VTP6
B	499	HIS	-	expression tag	UNP A0A343VTP6
B	500	HIS	-	expression tag	UNP A0A343VTP6
B	501	HIS	-	expression tag	UNP A0A343VTP6
B	502	HIS	-	expression tag	UNP A0A343VTP6
B	503	HIS	-	expression tag	UNP A0A343VTP6
B	504	HIS	-	expression tag	UNP A0A343VTP6

- Molecule 2 is 5-(4-([(2R)-6,6-dimethyl-1,4-dioxan-2-yl]methoxy}phenyl)-2-oxo-6-(trifluoromethyl)-1,2-dihydropyridine-3-carboxamide (CCD ID: A1CEF) (formula: C<sub>20</sub>H<sub>21</sub>F<sub>3</sub>N<sub>2</sub>O<sub>5</sub>) (labeled as "Ligand of Interest" by depositor).



Mol	Chain	Residues	Atoms					ZeroOcc	AltConf
2	A	1	Total 30	C 20	F 3	N 2	O 5	0	0
2	B	1	Total 30	C 20	F 3	N 2	O 5	0	0

- Molecule 3 is MAGNESIUM ION (CCD ID: MG) (formula: Mg) (labeled as "Ligand of Interest" by depositor).

Mol	Chain	Residues	Atoms		ZeroOcc	AltConf
3	B	1	Total	Mg	0	0
			1	1		

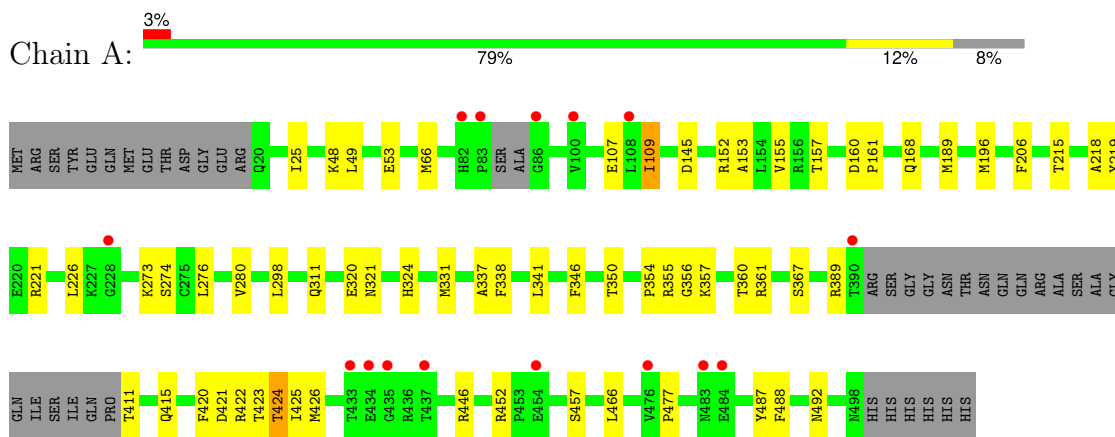
- Molecule 4 is water.

Mol	Chain	Residues	Atoms		ZeroOcc	AltConf
4	A	90	Total	O	0	0
			90	90		
4	B	78	Total	O	0	0
			78	78		

### 3 Residue-property plots [i](#)

These plots are drawn for all protein, RNA, DNA and oligosaccharide chains in the entry. The first graphic for a chain summarises the proportions of the various outlier classes displayed in the second graphic. The second graphic shows the sequence view annotated by issues in geometry and electron density. Residues are color-coded according to the number of geometric quality criteria for which they contain at least one outlier: green = 0, yellow = 1, orange = 2 and red = 3 or more. A red dot above a residue indicates a poor fit to the electron density ( $RSRZ > 2$ ). Stretches of 2 or more consecutive residues without any outlier are shown as a green connector. Residues present in the sample, but not in the model, are shown in grey.

#### • Molecule 1: Nucleoprotein



## 4 Data and refinement statistics

Property	Value	Source
Space group	P 41 21 2	Depositor
Cell constants a, b, c, $\alpha$ , $\beta$ , $\gamma$	60.17Å 60.17Å 582.06Å 90.00° 90.00° 90.00°	Depositor
Resolution (Å)	145.52 – 2.24 145.52 – 2.24	Depositor EDS
% Data completeness (in resolution range)	98.6 (145.52-2.24) 98.6 (145.52-2.24)	Depositor EDS
$R_{merge}$	(Not available)	Depositor
$R_{sym}$	0.19	Depositor
$\langle I/\sigma(I) \rangle$ <sup>1</sup>	1.32 (at 2.25Å)	Xtriage
Refinement program	BUSTER 2.11.8	Depositor
R, $R_{free}$	0.244 , 0.288 0.238 , 0.282	Depositor DCC
$R_{free}$ test set	2609 reflections (4.94%)	wwPDB-VP
Wilson B-factor (Å <sup>2</sup> )	48.1	Xtriage
Anisotropy	0.500	Xtriage
Bulk solvent $k_{sol}$ (e/Å <sup>3</sup> ), $B_{sol}$ (Å <sup>2</sup> )	0.31 , 50.7	EDS
L-test for twinning <sup>2</sup>	$\langle  L  \rangle = 0.47$ , $\langle L^2 \rangle = 0.30$	Xtriage
Estimated twinning fraction	No twinning to report.	Xtriage
$F_o, F_c$ correlation	0.94	EDS
Total number of atoms	7071	wwPDB-VP
Average B, all atoms (Å <sup>2</sup> )	69.0	wwPDB-VP

Xtriage's analysis on translational NCS is as follows: *The largest off-origin peak in the Patterson function is 3.74% of the height of the origin peak. No significant pseudotranslation is detected.*

<sup>1</sup>Intensities estimated from amplitudes.

<sup>2</sup>Theoretical values of  $\langle |L| \rangle$ ,  $\langle L^2 \rangle$  for acentric reflections are 0.5, 0.333 respectively for untwinned datasets, and 0.375, 0.2 for perfectly twinned datasets.

## 5 Model quality

### 5.1 Standard geometry

Bond lengths and bond angles in the following residue types are not validated in this section: MG, A1CEF

The Z score for a bond length (or angle) is the number of standard deviations the observed value is removed from the expected value. A bond length (or angle) with  $|Z| > 5$  is considered an outlier worth inspection. RMSZ is the root-mean-square of all Z scores of the bond lengths (or angles).

Mol	Chain	Bond lengths		Bond angles	
		RMSZ	$\# Z  > 5$	RMSZ	$\# Z  > 5$
1	A	0.72	1/3583 (0.0%)	1.09	2/4831 (0.0%)
1	B	0.70	0/3380	1.08	4/4554 (0.1%)
All	All	0.71	1/6963 (0.0%)	1.08	6/9385 (0.1%)

All (1) bond length outliers are listed below:

Mol	Chain	Res	Type	Atoms	Z	Observed(Å)	Ideal(Å)
1	A	66	MET	SD-CE	-5.57	1.65	1.79

All (6) bond angle outliers are listed below:

Mol	Chain	Res	Type	Atoms	Z	Observed(°)	Ideal(°)
1	B	496	TYR	CA-C-N	5.99	128.62	120.54
1	B	496	TYR	C-N-CA	5.99	128.62	120.54
1	A	160	ASP	CA-CB-CG	5.85	118.45	112.60
1	B	280	VAL	N-CA-C	-5.77	106.60	111.56
1	B	380	GLU	CB-CG-CD	5.25	121.52	112.60
1	A	420	PHE	CA-CB-CG	5.00	118.80	113.80

There are no chirality outliers.

There are no planarity outliers.

### 5.2 Too-close contacts

In the following table, the Non-H and H(model) columns list the number of non-hydrogen atoms and hydrogen atoms in the chain respectively. The H(added) column lists the number of hydrogen atoms added and optimized by MolProbity. The Clashes column lists the number of clashes within the asymmetric unit, whereas Symm-Clashes lists symmetry-related clashes.

Mol	Chain	Non-H	H(model)	H(added)	Clashes	Symm-Clashes
1	A	3521	0	3390	30	0
1	B	3321	0	3213	15	0
2	A	30	0	0	0	0
2	B	30	0	0	0	0
3	B	1	0	0	0	0
4	A	90	0	0	1	0
4	B	78	0	0	0	0
All	All	7071	0	6603	45	0

The all-atom clashscore is defined as the number of clashes found per 1000 atoms (including hydrogen atoms). The all-atom clashscore for this structure is 3.

All (45) close contacts within the same asymmetric unit are listed below, sorted by their clash magnitude.

Atom-1	Atom-2	Interatomic distance (Å)	Clash overlap (Å)
1:A:196:MET:HE1	1:A:219:TYR:HA	1.66	0.77
1:A:320:GLU:HG2	1:A:360:THR:HA	1.71	0.73
1:A:422:ARG:HE	1:A:426:MET:HE1	1.61	0.65
1:A:274:SER:OG	1:A:389:ARG:NH1	2.32	0.62
1:A:321:ASN:HD22	1:A:324:HIS:CE1	2.18	0.61
1:A:354:PRO:HD2	1:A:357:LYS:HD2	1.82	0.61
1:A:218:ALA:HA	1:A:221:ARG:HD2	1.83	0.61
1:A:422:ARG:HG2	1:A:426:MET:HE2	1.84	0.59
1:A:206:PHE:CZ	1:A:215:THR:HG21	2.38	0.59
1:B:438:SER:HB3	1:B:441:ARG:HG3	1.84	0.58
1:A:422:ARG:HE	1:A:426:MET:CE	2.15	0.58
1:A:331:MET:HE2	1:A:337:ALA:HA	1.87	0.57
1:A:356:GLY:HA2	1:A:492:ASN:OD1	2.06	0.55
1:A:331:MET:CE	1:A:337:ALA:HA	2.37	0.54
1:A:273:LYS:HB3	1:A:298:LEU:HD23	1.90	0.54
1:B:196:MET:HE2	1:B:215:THR:HG23	1.91	0.53
1:A:421:ASP:HB3	1:A:424:THR:HG23	1.92	0.50
1:B:456:VAL:HG21	1:B:481:MET:HE3	1.94	0.50
1:A:189:MET:HB2	1:A:226:LEU:HD13	1.93	0.50
1:B:273:LYS:HB3	1:B:298:LEU:HD23	1.96	0.48
1:A:341:LEU:HD11	1:A:487:TYR:HA	1.95	0.47
1:A:361:ARG:HG3	4:A:712:HOH:O	2.15	0.47
1:B:242:VAL:HG11	1:B:256:LEU:HD21	1.96	0.47
1:B:497:ASP:HB2	1:B:499:HIS:CD2	2.50	0.46
1:B:232:THR:HG21	1:B:266:LEU:HD22	1.98	0.45
1:A:107:GLU:HG3	1:A:109:ILE:HG23	1.99	0.45
1:A:153:ALA:O	1:A:157:THR:HG23	2.16	0.45

*Continued on next page...*



Continued from previous page...

Atom-1	Atom-2	Interatomic distance (Å)	Clash overlap (Å)
1:A:425:ILE:HD12	1:A:452:ARG:HD3	1.97	0.44
1:B:168:GLN:HG3	1:B:338:PHE:CD1	2.53	0.44
1:A:276:LEU:HD13	1:A:280:VAL:HG11	1.99	0.43
1:A:152:ARG:HA	1:A:155:VAL:HG22	2.00	0.43
1:A:155:VAL:HG12	1:A:161:PRO:HD3	2.01	0.43
1:B:261:ARG:HA	1:B:264:LEU:HD12	2.00	0.43
1:A:49:LEU:HD22	1:A:53:GLU:HB3	2.01	0.43
1:B:456:VAL:HG11	1:B:479:PHE:HB2	2.00	0.42
1:B:160:ASP:HB3	1:B:163:MET:HG2	2.01	0.42
1:A:446:ARG:HA	1:A:446:ARG:HD3	1.91	0.42
1:B:456:VAL:HG21	1:B:479:PHE:HB2	2.01	0.42
1:A:355:ARG:NH2	1:A:488:PHE:CD1	2.87	0.42
1:B:76:ASN:HA	1:B:79:LEU:O	2.20	0.41
1:A:145:ASP:HB3	1:A:338:PHE:HE1	1.86	0.41
1:B:149:GLN:HG3	1:B:493:ALA:HB3	2.01	0.41
1:A:346:PHE:CE2	1:A:477:PRO:HA	2.55	0.41
1:A:168:GLN:HG3	1:A:338:PHE:CD1	2.56	0.40
1:B:206:PHE:CE2	1:B:215:THR:HG21	2.56	0.40

There are no symmetry-related clashes.

## 5.3 Torsion angles ⓘ

### 5.3.1 Protein backbone ⓘ

In the following table, the Percentiles column shows the percent Ramachandran outliers of the chain as a percentile score with respect to all X-ray entries followed by that with respect to entries of similar resolution.

The Analysed column shows the number of residues for which the backbone conformation was analysed, and the total number of residues.

Mol	Chain	Analysed	Favoured	Allowed	Outliers	Percentiles	
1	A	451/498 (91%)	442 (98%)	8 (2%)	1 (0%)	44	49
1	B	423/498 (85%)	415 (98%)	8 (2%)	0	100	100
All	All	874/996 (88%)	857 (98%)	16 (2%)	1 (0%)	48	55

All (1) Ramachandran outliers are listed below:

Mol	Chain	Res	Type
1	A	415	GLN

### 5.3.2 Protein sidechains [i](#)

In the following table, the Percentiles column shows the percent sidechain outliers of the chain as a percentile score with respect to all X-ray entries followed by that with respect to entries of similar resolution.

The Analysed column shows the number of residues for which the sidechain conformation was analysed, and the total number of residues.

Mol	Chain	Analysed	Rotameric	Outliers	Percentiles	
1	A	361/420 (86%)	350 (97%)	11 (3%)	36	42
1	B	342/420 (81%)	336 (98%)	6 (2%)	54	61
All	All	703/840 (84%)	686 (98%)	17 (2%)	44	50

All (17) residues with a non-rotameric sidechain are listed below:

Mol	Chain	Res	Type
1	A	25	ILE
1	A	48	LYS
1	A	109	ILE
1	A	311	GLN
1	A	350	THR
1	A	367	SER
1	A	411	THR
1	A	423	THR
1	A	424	THR
1	A	457	SER
1	A	466	LEU
1	B	25	ILE
1	B	108	LEU
1	B	109	ILE
1	B	247	ASN
1	B	368	ASN
1	B	389	ARG

Sometimes sidechains can be flipped to improve hydrogen bonding and reduce clashes. All (9) such sidechains are listed below:

Mol	Chain	Res	Type
1	A	21	ASN

*Continued on next page...*

*Continued from previous page...*

Mol	Chain	Res	Type
1	A	76	ASN
1	A	125	ASN
1	A	311	GLN
1	A	319	ASN
1	A	321	ASN
1	B	42	GLN
1	B	311	GLN
1	B	499	HIS

### 5.3.3 RNA [i](#)

There are no RNA molecules in this entry.

## 5.4 Non-standard residues in protein, DNA, RNA chains [i](#)

There are no non-standard protein/DNA/RNA residues in this entry.

## 5.5 Carbohydrates [i](#)

There are no oligosaccharides in this entry.

## 5.6 Ligand geometry [i](#)

Of 3 ligands modelled in this entry, 1 is monoatomic - leaving 2 for Mogul analysis.

In the following table, the Counts columns list the number of bonds (or angles) for which Mogul statistics could be retrieved, the number of bonds (or angles) that are observed in the model and the number of bonds (or angles) that are defined in the Chemical Component Dictionary. The Link column lists molecule types, if any, to which the group is linked. The Z score for a bond length (or angle) is the number of standard deviations the observed value is removed from the expected value. A bond length (or angle) with  $|Z| > 2$  is considered an outlier worth inspection. RMSZ is the root-mean-square of all Z scores of the bond lengths (or angles).

Mol	Type	Chain	Res	Link	Bond lengths			Bond angles		
					Counts	RMSZ	$\# Z  > 2$	Counts	RMSZ	$\# Z  > 2$
2	A1CEF	B	601	-	31,32,32	0.33	0	41,48,48	0.43	0
2	A1CEF	A	601	-	31,32,32	0.27	0	41,48,48	0.46	0

In the following table, the Chirals column lists the number of chiral outliers, the number of chiral centers analysed, the number of these observed in the model and the number defined in the Chemical Component Dictionary. Similar counts are reported in the Torsion and Rings columns.

'-' means no outliers of that kind were identified.

Mol	Type	Chain	Res	Link	Chirals	Torsions	Rings
2	A1CEF	B	601	-	-	0/19/31/31	0/3/3/3
2	A1CEF	A	601	-	-	0/19/31/31	0/3/3/3

There are no bond length outliers.

There are no bond angle outliers.

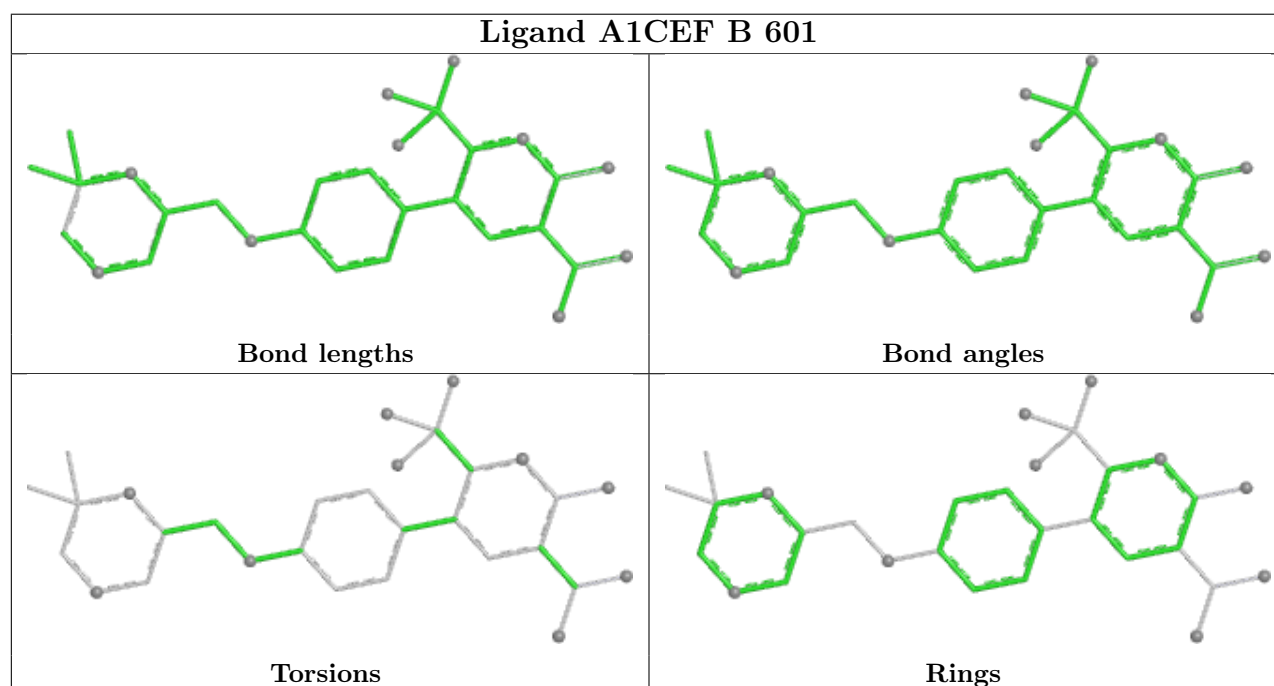
There are no chirality outliers.

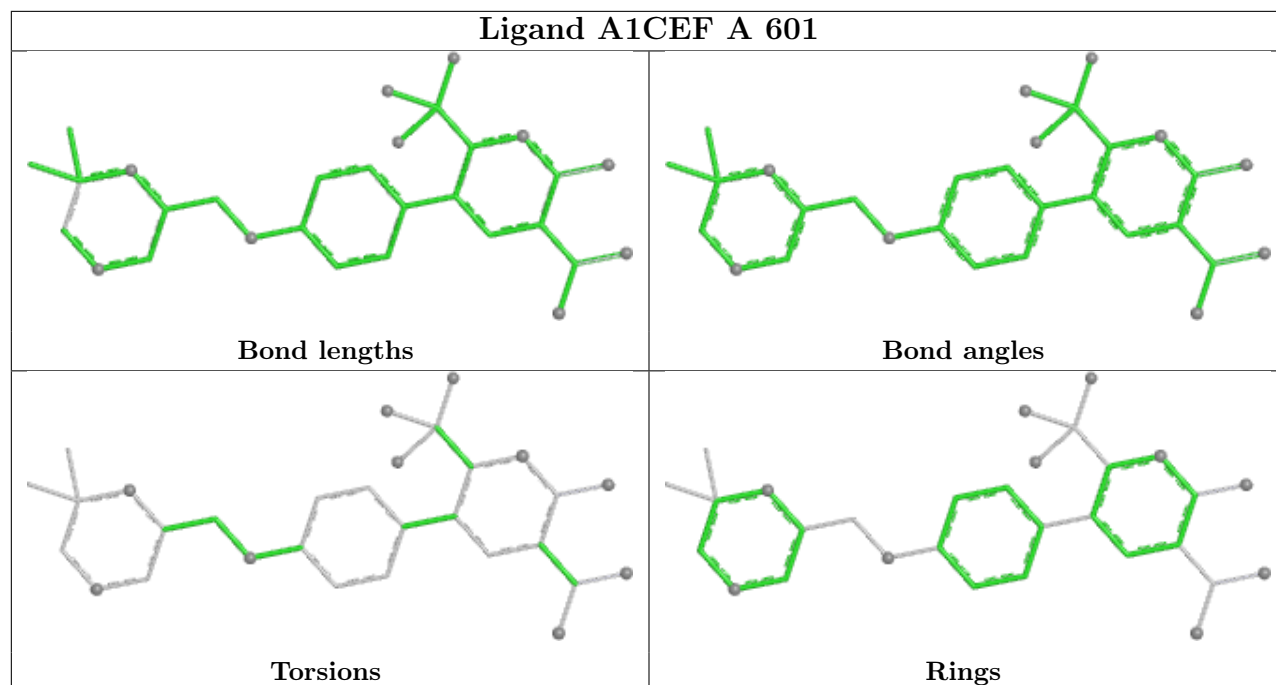
There are no torsion outliers.

There are no ring outliers.

No monomer is involved in short contacts.

The following is a two-dimensional graphical depiction of Mogul quality analysis of bond lengths, bond angles, torsion angles, and ring geometry for all instances of the Ligand of Interest. In addition, ligands with molecular weight > 250 and outliers as shown on the validation Tables will also be included. For torsion angles, if less than 5% of the Mogul distribution of torsion angles is within 10 degrees of the torsion angle in question, then that torsion angle is considered an outlier. Any bond that is central to one or more torsion angles identified as an outlier by Mogul will be highlighted in the graph. For rings, the root-mean-square deviation (RMSD) between the ring in question and similar rings identified by Mogul is calculated over all ring torsion angles. If the average RMSD is greater than 60 degrees and the minimal RMSD between the ring in question and any Mogul-identified rings is also greater than 60 degrees, then that ring is considered an outlier. The outliers are highlighted in purple. The color gray indicates Mogul did not find sufficient equivalents in the CSD to analyse the geometry.





## 5.7 Other polymers [i](#)

There are no such residues in this entry.

## 5.8 Polymer linkage issues [i](#)

There are no chain breaks in this entry.

## 6 Fit of model and data

### 6.1 Protein, DNA and RNA chains

In the following table, the column labelled ‘#RSRZ > 2’ contains the number (and percentage) of RSRZ outliers, followed by percent RSRZ outliers for the chain as percentile scores relative to all X-ray entries and entries of similar resolution. The OWAB column contains the minimum, median, 95<sup>th</sup> percentile and maximum values of the occupancy-weighted average B-factor per residue. The column labelled ‘Q < 0.9’ lists the number of (and percentage) of residues with an average occupancy less than 0.9.

Mol	Chain	Analysed	<RSRZ>	#RSRZ>2	OWAB(Å <sup>2</sup> )	Q<0.9
1	A	457/498 (91%)	0.21	15 (3%) 49 49	45, 65, 94, 103	0
1	B	429/498 (86%)	0.37	11 (2%) 57 58	42, 69, 110, 124	0
All	All	886/996 (88%)	0.29	26 (2%) 54 54	42, 67, 101, 124	0

All (26) RSRZ outliers are listed below:

Mol	Chain	Res	Type	RSRZ
1	B	440	MET	3.7
1	B	83	PRO	3.2
1	B	266	LEU	3.1
1	B	85	ALA	3.1
1	A	83	PRO	2.9
1	B	456	VAL	2.7
1	B	82	HIS	2.7
1	A	390	THR	2.7
1	B	458	PHE	2.5
1	A	434	GLU	2.5
1	B	457	SER	2.4
1	A	433	THR	2.3
1	A	454	GLU	2.3
1	A	484	GLU	2.3
1	B	295	GLY	2.3
1	A	435	GLY	2.3
1	A	476	VAL	2.2
1	A	437	THR	2.2
1	A	228	GLY	2.2
1	A	100	VAL	2.2
1	A	108	LEU	2.1
1	A	86	GLY	2.1
1	A	483	ASN	2.1
1	A	82	HIS	2.1

*Continued on next page...*

*Continued from previous page...*

Mol	Chain	Res	Type	RSRZ
1	B	481	MET	2.0
1	B	86	GLY	2.0

## 6.2 Non-standard residues in protein, DNA, RNA chains [i](#)

There are no non-standard protein/DNA/RNA residues in this entry.

## 6.3 Carbohydrates [i](#)

There are no oligosaccharides in this entry.

## 6.4 Ligands [i](#)

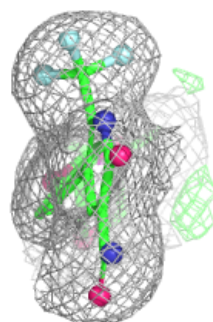
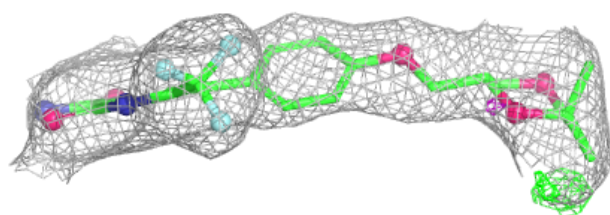
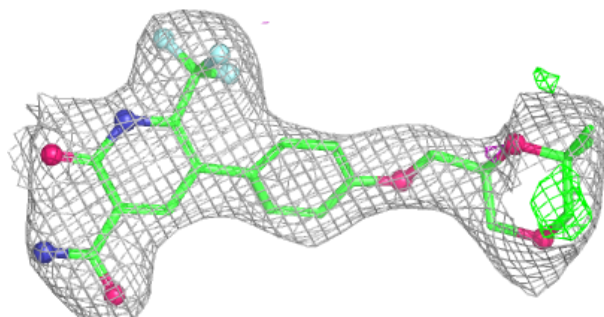
In the following table, the Atoms column lists the number of modelled atoms in the group and the number defined in the chemical component dictionary. The B-factors column lists the minimum, median, 95<sup>th</sup> percentile and maximum values of B factors of atoms in the group. The column labelled 'Q < 0.9' lists the number of atoms with occupancy less than 0.9.

Mol	Type	Chain	Res	Atoms	RSCC	RSR	B-factors( $\text{\AA}^2$ )	Q<0.9
2	A1CEF	B	601	30/30	0.85	0.11	66,69,76,76	0
2	A1CEF	A	601	30/30	0.90	0.09	64,67,70,71	0
3	MG	B	602	1/1	0.97	0.04	56,56,56,56	0

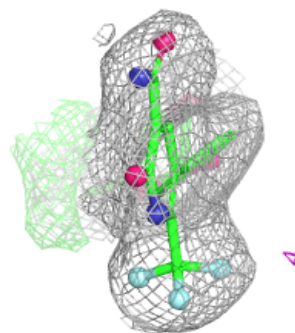
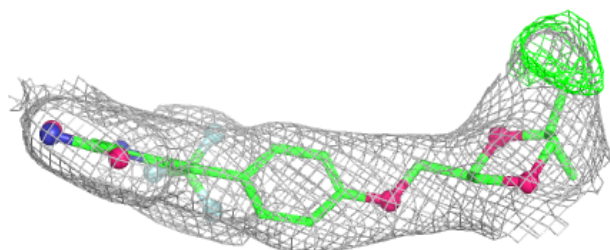
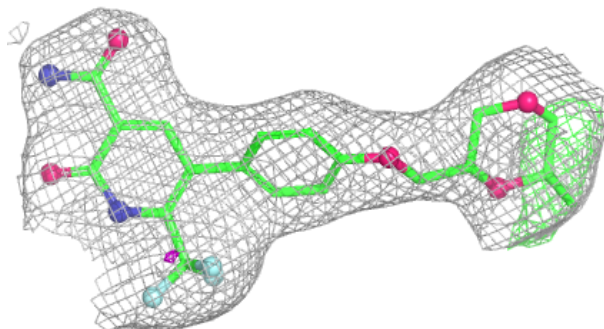
The following is a graphical depiction of the model fit to experimental electron density of all instances of the Ligand of Interest. In addition, ligands with molecular weight > 250 and outliers as shown on the geometry validation Tables will also be included. Each fit is shown from different orientation to approximate a three-dimensional view.

**Electron density around A1CEF B 601:**

$2mF_o-DF_c$  (at 0.7 rmsd) in gray  
 $mF_o-DF_c$  (at 3 rmsd) in purple (negative)  
and green (positive)

**Electron density around A1CEF A 601:**

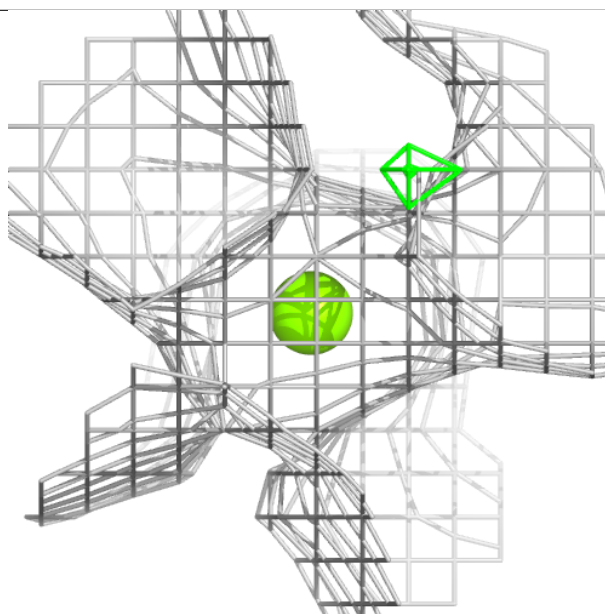
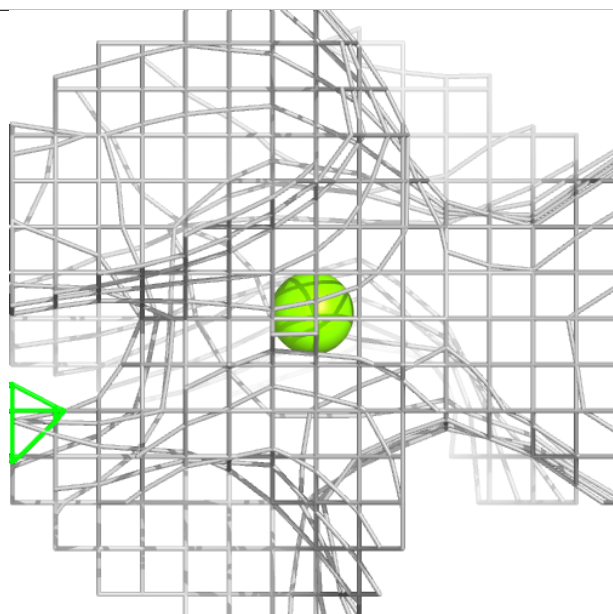
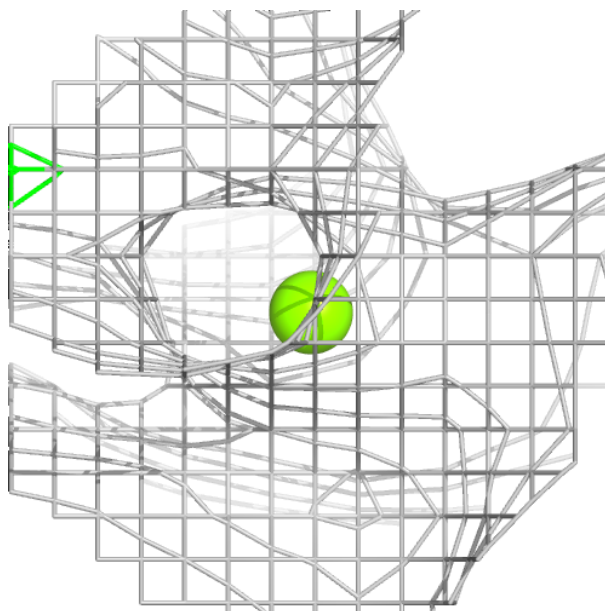
$2mF_o-DF_c$  (at 0.7 rmsd) in gray  
 $mF_o-DF_c$  (at 3 rmsd) in purple (negative)  
and green (positive)





**Electron density around MG B 602:**

$2mF_o-DF_c$  (at 0.7 rmsd) in gray  
 $mF_o-DF_c$  (at 3 rmsd) in purple (negative)  
and green (positive)



## 6.5 Other polymers ⓘ

There are no such residues in this entry.