



# wwPDB X-ray Structure Validation Summary Report ⓘ

Nov 3, 2024 – 08:12 PM EST

PDB ID : 1ORV  
Title : Crystal Structure of Porcine Dipeptidyl Peptidase IV (CD26)  
Authors : Engel, M.; Hoffmann, T.; Wagner, L.; Wermann, M.; Heiser, U.; Kiefersauer, R.; Huber, R.; Bode, W.; Demuth, H.U.; Brandstetter, H.  
Deposited on : 2003-03-16  
Resolution : 1.80 Å(reported)

This is a wwPDB X-ray Structure Validation Summary Report for a publicly released PDB entry.

We welcome your comments at [validation@mail.wwpdb.org](mailto:validation@mail.wwpdb.org)

A user guide is available at

<https://www.wwpdb.org/validation/2017/XrayValidationReportHelp>

with specific help available everywhere you see the ⓘ symbol.

The types of validation reports are described at

<http://www.wwpdb.org/validation/2017/FAQs#types>.

---

The following versions of software and data (see [references ⓘ](#)) were used in the production of this report:

MolProbity	:	4.02b-467
Mogul	:	2022.3.0, CSD as543be (2022)
Xtriage (Phenix)	:	1.20.1
EDS	:	3.0
Percentile statistics	:	20231227.v01 (using entries in the PDB archive December 27th 2023)
CCP4	:	9.0.003 (Gargrove)
Density-Fitness	:	1.0.11
Ideal geometry (proteins)	:	Engh & Huber (2001)
Ideal geometry (DNA, RNA)	:	Parkinson et al. (1996)
Validation Pipeline (wwPDB-VP)	:	2.39

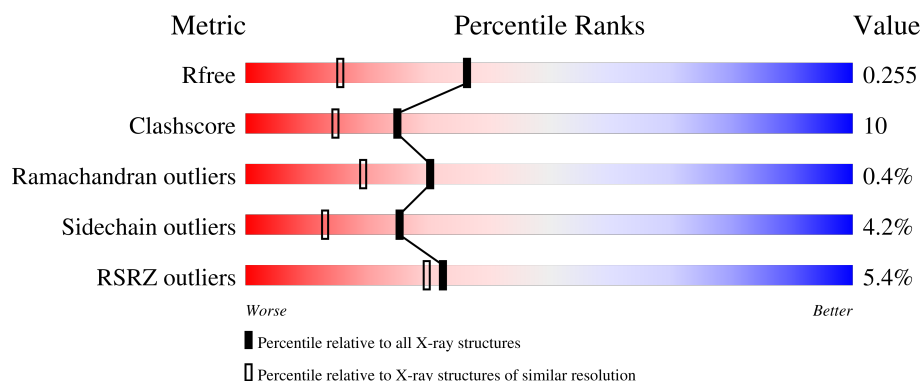
# 1 Overall quality at a glance

The following experimental techniques were used to determine the structure:

*X-RAY DIFFRACTION*

The reported resolution of this entry is 1.80 Å.

Percentile scores (ranging between 0-100) for global validation metrics of the entry are shown in the following graphic. The table shows the number of entries on which the scores are based.



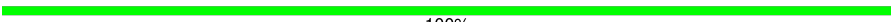

Metric	Whole archive (#Entries)	Similar resolution (#Entries, resolution range(Å))
$R_{free}$	164625	7108 (1.80-1.80)
Clashscore	180529	8162 (1.80-1.80)
Ramachandran outliers	177936	8077 (1.80-1.80)
Sidechain outliers	177891	8076 (1.80-1.80)
RSRZ outliers	164620	7108 (1.80-1.80)

The table below summarises the geometric issues observed across the polymeric chains and their fit to the electron density. The red, orange, yellow and green segments of the lower bar indicate the fraction of residues that contain outliers for  $\geq 3$ , 2, 1 and 0 types of geometric quality criteria respectively. A grey segment represents the fraction of residues that are not modelled. The numeric value for each fraction is indicated below the corresponding segment, with a dot representing fractions  $\leq 5\%$ . The upper red bar (where present) indicates the fraction of residues that have poor fit to the electron density. The numeric value is given above the bar.

Mol	Chain	Length	Quality of chain
1	A	728	<div> <div>8%</div> <div>79%</div> <div>20%</div> <div>.</div> </div>
1	B	728	<div> <div>3%</div> <div>80%</div> <div>20%</div> <div>.</div> </div>
1	C	728	<div> <div>5%</div> <div>78%</div> <div>19%</div> <div>.</div> </div>
1	D	728	<div> <div>6%</div> <div>77%</div> <div>21%</div> <div>.</div> </div>
2	E	2	<div> <div>50%</div> <div>50%</div> </div>

*Continued on next page...*

*Continued from previous page...*

Mol	Chain	Length	Quality of chain
2	F	2	 100%
2	H	2	 100%
2	I	2	 50% 50%
2	K	2	 100%
2	L	2	 50% 50%
2	M	2	 50% 50%
3	G	3	 67% 33%
3	J	3	 33% 33% 33%

## 2 Entry composition [i](#)

There are 6 unique types of molecules in this entry. The entry contains 25836 atoms, of which 0 are hydrogens and 0 are deuteriums.

In the tables below, the ZeroOcc column contains the number of atoms modelled with zero occupancy, the AltConf column contains the number of residues with at least one atom in alternate conformation and the Trace column contains the number of residues modelled with at most 2 atoms.

- Molecule 1 is a protein called dipeptidyl peptidase IV.

Mol	Chain	Residues	Atoms					ZeroOcc	AltConf	Trace
1	A	728	Total	C	N	O	S	80	0	0
			5966	3825	986	1132	23			
1	B	728	Total	C	N	O	S	42	0	0
			5966	3825	986	1132	23			
1	C	728	Total	C	N	O	S	83	0	0
			5966	3825	986	1132	23			
1	D	728	Total	C	N	O	S	36	0	0
			5966	3825	986	1132	23			

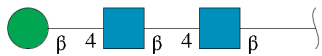
- Molecule 2 is an oligosaccharide called 2-acetamido-2-deoxy-beta-D-glucopyranose-(1-4)-2-acetamido-2-deoxy-beta-D-glucopyranose.



Mol	Chain	Residues	Atoms				ZeroOcc	AltConf	Trace
2	E	2	Total	C	N	O	0	0	0
			28	16	2	10			
2	F	2	Total	C	N	O	0	0	0
			28	16	2	10			
2	H	2	Total	C	N	O	0	0	0
			28	16	2	10			
2	I	2	Total	C	N	O	0	0	0
			28	16	2	10			
2	K	2	Total	C	N	O	0	0	0
			28	16	2	10			
2	L	2	Total	C	N	O	0	0	0
			28	16	2	10			
2	M	2	Total	C	N	O	0	0	0
			28	16	2	10			

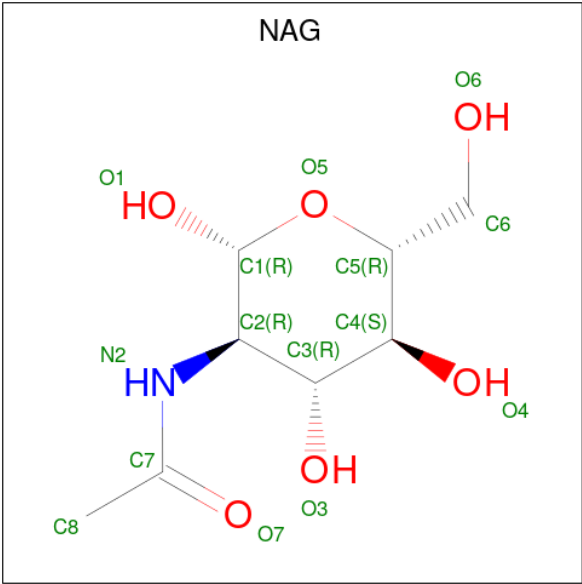
- Molecule 3 is an oligosaccharide called beta-D-mannopyranose-(1-4)-2-acetamido-2-deoxy-b

eta-D-glucopyranose-(1-4)-2-acetamido-2-deoxy-beta-D-glucopyranose.



Mol	Chain	Residues	Atoms				ZeroOcc	AltConf	Trace
3	G	3	Total	C	N	O	0	0	0
			39	22	2	15			
3	J	3	Total	C	N	O	0	0	0
			39	22	2	15			

- Molecule 4 is 2-acetamido-2-deoxy-beta-D-glucopyranose (three-letter code: NAG) (formula: C<sub>8</sub>H<sub>15</sub>NO<sub>6</sub>).



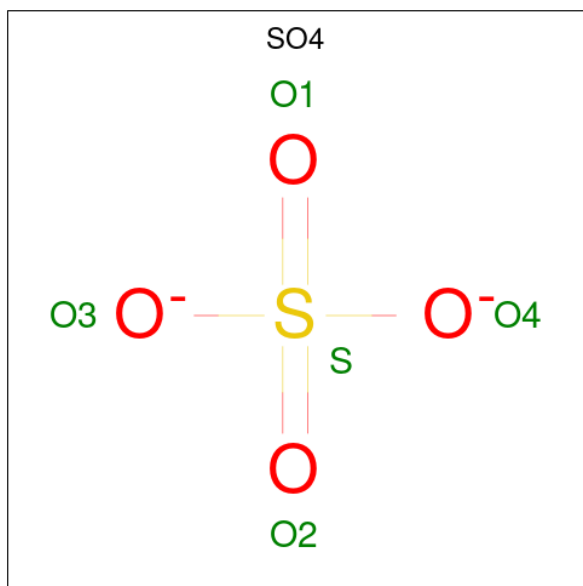
Mol	Chain	Residues	Atoms				ZeroOcc	AltConf
4	A	1	Total	C	N	O	0	0
			14	8	1	5		
4	A	1	Total	C	N	O	0	0
			14	8	1	5		
4	A	1	Total	C	N	O	3	0
			14	8	1	5		
4	A	1	Total	C	N	O	0	0
			14	8	1	5		
4	B	1	Total	C	N	O	0	0
			14	8	1	5		
4	B	1	Total	C	N	O	0	0
			14	8	1	5		

Continued on next page...

*Continued from previous page...*

Mol	Chain	Residues	Atoms				ZeroOcc	AltConf
4	B	1	Total	C	N	O	0	0
			14	8	1	5		
4	B	1	Total	C	N	O	0	0
			14	8	1	5		
4	C	1	Total	C	N	O	0	0
			14	8	1	5		
4	C	1	Total	C	N	O	0	0
			14	8	1	5		
4	C	1	Total	C	N	O	0	0
			14	8	1	5		
4	C	1	Total	C	N	O	0	0
			14	8	1	5		
4	D	1	Total	C	N	O	0	0
			14	8	1	5		
4	D	1	Total	C	N	O	0	0
			14	8	1	5		

- Molecule 5 is SULFATE ION (three-letter code: SO4) (formula: O<sub>4</sub>S).



Mol	Chain	Residues	Atoms			ZeroOcc	AltConf
5	A	1	Total	O	S	0	0
			5	4	1		
5	B	1	Total	O	S	0	0
			5	4	1		

*Continued on next page...*

*Continued from previous page...*

Mol	Chain	Residues	Atoms			ZeroOcc	AltConf
5	C	1	Total	O	S	0	0
			5	4	1		
5	D	1	Total	O	S	0	0
			5	4	1		

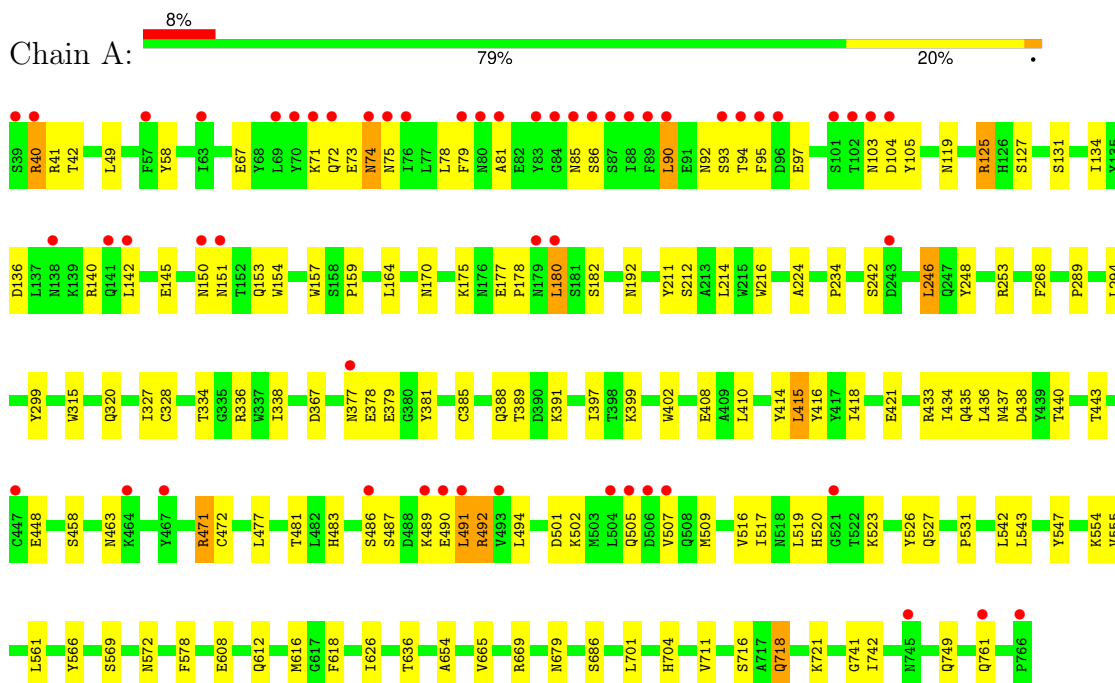
- Molecule 6 is water.

Mol	Chain	Residues	Atoms		ZeroOcc	AltConf
6	A	334	Total	O	0	0
			334	334		
6	B	431	Total	O	0	0
			431	431		
6	C	378	Total	O	0	0
			378	378		
6	D	325	Total	O	0	0
			325	325		

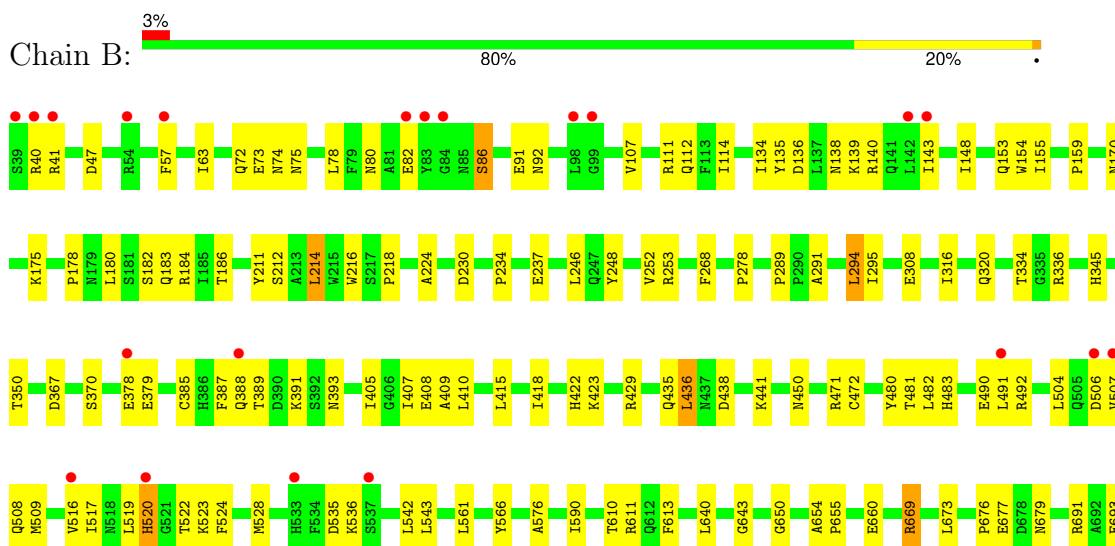
### 3 Residue-property plots

These plots are drawn for all protein, RNA, DNA and oligosaccharide chains in the entry. The first graphic for a chain summarises the proportions of the various outlier classes displayed in the second graphic. The second graphic shows the sequence view annotated by issues in geometry and electron density. Residues are color-coded according to the number of geometric quality criteria for which they contain at least one outlier: green = 0, yellow = 1, orange = 2 and red = 3 or more. A red dot above a residue indicates a poor fit to the electron density ( $RSRZ > 2$ ). Stretches of 2 or more consecutive residues without any outlier are shown as a green connector. Residues present in the sample, but not in the model, are shown in grey.

#### • Molecule 1: dipeptidyl peptidase IV



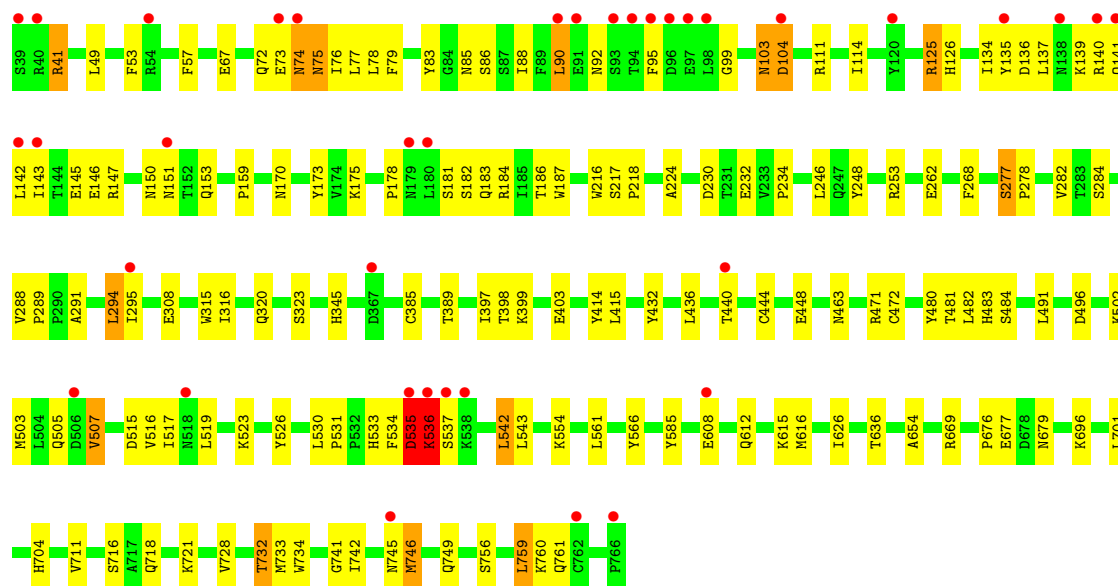
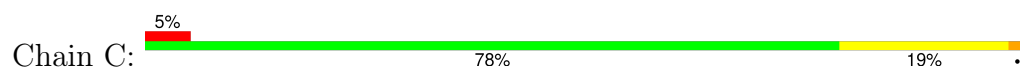
#### • Molecule 1: dipeptidyl peptidase IV



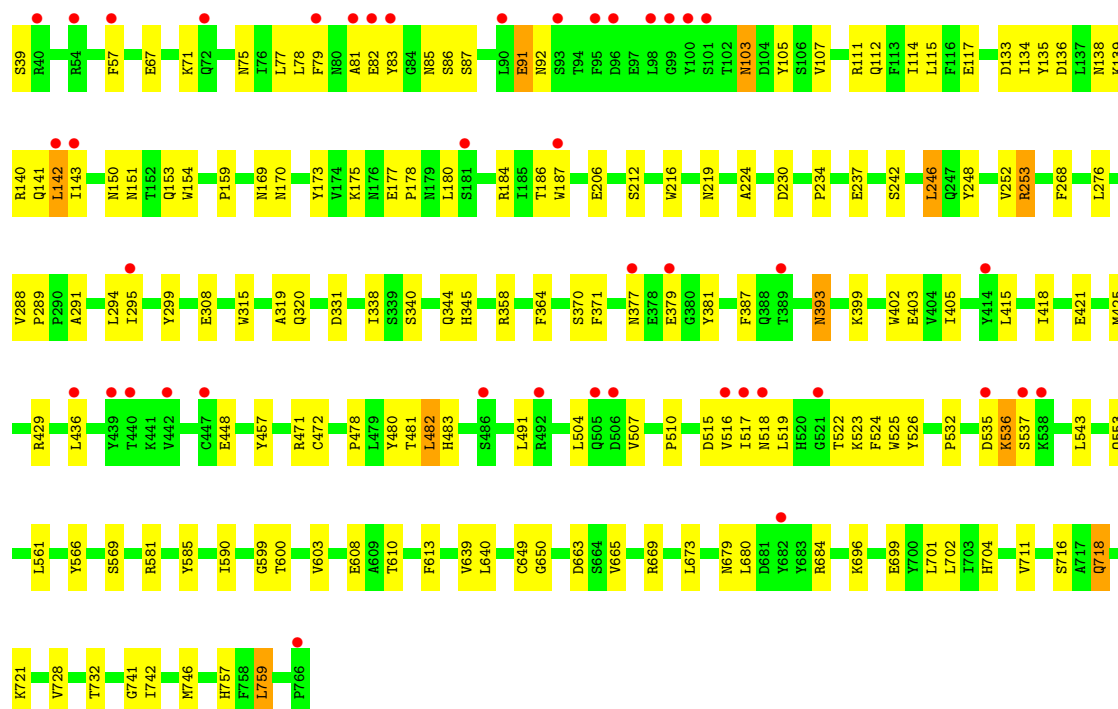
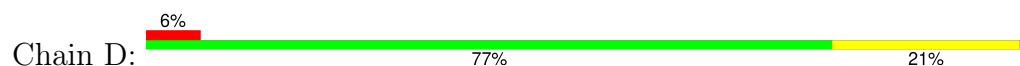




• Molecule 1: dipeptidyl peptidase IV



• Molecule 1: dipeptidyl peptidase IV



- Molecule 2: 2-acetamido-2-deoxy-beta-D-glucopyranose-(1-4)-2-acetamido-2-deoxy-beta-D-glucopyranose

Chain E:  50% 50%

NAG1  
NAG2

- Molecule 2: 2-acetamido-2-deoxy-beta-D-glucopyranose-(1-4)-2-acetamido-2-deoxy-beta-D-glucopyranose

Chain F:  100%

NAG1  
NAG2

- Molecule 2: 2-acetamido-2-deoxy-beta-D-glucopyranose-(1-4)-2-acetamido-2-deoxy-beta-D-glucopyranose

Chain H:  100%

NAG1  
NAG2

- Molecule 2: 2-acetamido-2-deoxy-beta-D-glucopyranose-(1-4)-2-acetamido-2-deoxy-beta-D-glucopyranose

Chain I:  50% 50%

NAG1  
NAG2

- Molecule 2: 2-acetamido-2-deoxy-beta-D-glucopyranose-(1-4)-2-acetamido-2-deoxy-beta-D-glucopyranose

Chain K:  100%

NAG1  
NAG2

- Molecule 2: 2-acetamido-2-deoxy-beta-D-glucopyranose-(1-4)-2-acetamido-2-deoxy-beta-D-glucopyranose

Chain L:  50% 50%

NAG1  
NAG2

- Molecule 2: 2-acetamido-2-deoxy-beta-D-glucopyranose-(1-4)-2-acetamido-2-deoxy-beta-D-glucopyranose

Chain M:  50% 50%



- Molecule 3: beta-D-mannopyranose-(1-4)-2-acetamido-2-deoxy-beta-D-glucopyranose-(1-4)-2-acetamido-2-deoxy-beta-D-glucopyranose



- Molecule 3: beta-D-mannopyranose-(1-4)-2-acetamido-2-deoxy-beta-D-glucopyranose-(1-4)-2-acetamido-2-deoxy-beta-D-glucopyranose



## 4 Data and refinement statistics

Property	Value	Source
Space group	P 1	Depositor
Cell constants a, b, c, $\alpha$ , $\beta$ , $\gamma$	62.00Å 118.18Å 133.59Å 112.76° 94.93° 91.14°	Depositor
Resolution (Å)	19.25 – 1.80 19.25 – 1.80	Depositor EDS
% Data completeness (in resolution range)	96.2 (19.25-1.80) 96.1 (19.25-1.80)	Depositor EDS
$R_{merge}$	(Not available)	Depositor
$R_{sym}$	(Not available)	Depositor
$\langle I/\sigma(I) \rangle$ <sup>1</sup>	1.29 (at 1.78Å)	Xtriage
Refinement program	CNS 1.1	Depositor
R, $R_{free}$	0.217 , 0.252 0.222 , 0.255	Depositor DCC
$R_{free}$ test set	15446 reflections (4.98%)	wwPDB-VP
Wilson B-factor (Å <sup>2</sup> )	28.4	Xtriage
Anisotropy	0.356	Xtriage
Bulk solvent $k_{sol}$ (e/Å <sup>3</sup> ), $B_{sol}$ (Å <sup>2</sup> )	0.40 , 45.0	EDS
L-test for twinning <sup>2</sup>	$\langle  L  \rangle = 0.51$ , $\langle L^2 \rangle = 0.35$	Xtriage
Estimated twinning fraction	No twinning to report.	Xtriage
$F_o, F_c$ correlation	0.96	EDS
Total number of atoms	25836	wwPDB-VP
Average B, all atoms (Å <sup>2</sup> )	36.0	wwPDB-VP

Xtriage's analysis on translational NCS is as follows: *The largest off-origin peak in the Patterson function is 3.58% of the height of the origin peak. No significant pseudotranslation is detected.*

<sup>1</sup>Intensities estimated from amplitudes.

<sup>2</sup>Theoretical values of  $\langle |L| \rangle$ ,  $\langle L^2 \rangle$  for acentric reflections are 0.5, 0.333 respectively for untwinned datasets, and 0.375, 0.2 for perfectly twinned datasets.

## 5 Model quality [i](#)

### 5.1 Standard geometry [i](#)

Bond lengths and bond angles in the following residue types are not validated in this section: SO4, NAG, BMA

The Z score for a bond length (or angle) is the number of standard deviations the observed value is removed from the expected value. A bond length (or angle) with  $|Z| > 5$  is considered an outlier worth inspection. RMSZ is the root-mean-square of all Z scores of the bond lengths (or angles).

Mol	Chain	Bond lengths		Bond angles	
		RMSZ	# Z  >5	RMSZ	# Z  >5
1	A	0.47	0/6141	0.71	1/8353 (0.0%)
1	B	0.51	0/6141	0.73	2/8353 (0.0%)
1	C	0.49	0/6141	0.73	3/8353 (0.0%)
1	D	0.44	0/6141	0.69	1/8353 (0.0%)
All	All	0.48	0/24564	0.71	7/33412 (0.0%)

Chiral center outliers are detected by calculating the chiral volume of a chiral center and verifying if the center is modelled as a planar moiety or with the opposite hand. A planarity outlier is detected by checking planarity of atoms in a peptide group, atoms in a mainchain group or atoms of a sidechain that are expected to be planar.

Mol	Chain	#Chirality outliers	#Planarity outliers
1	B	0	2

There are no bond length outliers.

The worst 5 of 7 bond angle outliers are listed below:

Mol	Chain	Res	Type	Atoms	Z	Observed(°)	Ideal(°)
1	C	103	ASN	N-CA-C	7.01	129.93	111.00
1	C	104	ASP	N-CA-C	-6.74	92.79	111.00
1	B	669	ARG	NE-CZ-NH2	-6.71	116.95	120.30
1	D	319	ALA	N-CA-C	-5.55	96.03	111.00
1	A	214	LEU	CA-CB-CG	5.21	127.28	115.30

There are no chirality outliers.

All (2) planarity outliers are listed below:

Mol	Chain	Res	Type	Group
1	B	211	TYR	Sidechain

*Continued on next page...*

*Continued from previous page...*

Mol	Chain	Res	Type	Group
1	B	700	TYR	Sidechain

## 5.2 Too-close contacts ⓘ

In the following table, the Non-H and H(model) columns list the number of non-hydrogen atoms and hydrogen atoms in the chain respectively. The H(added) column lists the number of hydrogen atoms added and optimized by MolProbity. The Clashes column lists the number of clashes within the asymmetric unit, whereas Symm-Clashes lists symmetry-related clashes.

Mol	Chain	Non-H	H(model)	H(added)	Clashes	Symm-Clashes
1	A	5966	0	5663	102	0
1	B	5966	0	5663	105	0
1	C	5966	0	5662	125	0
1	D	5966	0	5662	129	0
2	E	28	0	25	0	0
2	F	28	0	25	1	0
2	H	28	0	25	0	0
2	I	28	0	25	0	0
2	K	28	0	25	0	0
2	L	28	0	25	0	0
2	M	28	0	25	0	0
3	G	39	0	34	1	0
3	J	39	0	34	1	0
4	A	56	0	52	2	0
4	B	56	0	52	2	0
4	C	70	0	65	1	0
4	D	28	0	26	1	0
5	A	5	0	0	0	0
5	B	5	0	0	0	0
5	C	5	0	0	0	0
5	D	5	0	0	0	0
6	A	334	0	0	5	0
6	B	431	0	0	11	0
6	C	378	0	0	8	0
6	D	325	0	0	10	0
All	All	25836	0	23088	449	0

The all-atom clashscore is defined as the number of clashes found per 1000 atoms (including hydrogen atoms). The all-atom clashscore for this structure is 10.

The worst 5 of 449 close contacts within the same asymmetric unit are listed below, sorted by their clash magnitude.

Atom-1	Atom-2	Interatomic distance (Å)	Clash overlap (Å)
1:C:516:VAL:HG11	1:C:523:LYS:HB2	1.40	1.01
1:C:535:ASP:C	1:C:536:LYS:HD3	1.83	0.97
1:C:536:LYS:HG2	1:C:537:SER:H	1.31	0.95
1:A:492:ARG:HH21	1:A:492:ARG:HB3	1.36	0.87
1:C:746:MET:H	1:C:746:MET:CE	1.89	0.86

There are no symmetry-related clashes.

## 5.3 Torsion angles [i](#)

### 5.3.1 Protein backbone [i](#)

In the following table, the Percentiles column shows the percent Ramachandran outliers of the chain as a percentile score with respect to all X-ray entries followed by that with respect to entries of similar resolution.

The Analysed column shows the number of residues for which the backbone conformation was analysed, and the total number of residues.

Mol	Chain	Analysed	Favoured	Allowed	Outliers	Percentiles	
1	A	726/728 (100%)	689 (95%)	34 (5%)	3 (0%)	30	19
1	B	726/728 (100%)	699 (96%)	25 (3%)	2 (0%)	37	25
1	C	726/728 (100%)	685 (94%)	35 (5%)	6 (1%)	16	6
1	D	726/728 (100%)	698 (96%)	28 (4%)	0	100	100
All	All	2904/2912 (100%)	2771 (95%)	122 (4%)	11 (0%)	30	19

5 of 11 Ramachandran outliers are listed below:

Mol	Chain	Res	Type
1	A	40	ARG
1	B	491	LEU
1	C	103	ASN
1	C	104	ASP
1	C	535	ASP

### 5.3.2 Protein sidechains [i](#)

In the following table, the Percentiles column shows the percent sidechain outliers of the chain as a percentile score with respect to all X-ray entries followed by that with respect to entries of similar resolution.

The Analysed column shows the number of residues for which the sidechain conformation was analysed, and the total number of residues.

Mol	Chain	Analysed	Rotameric	Outliers	Percentiles	
1	A	652/652 (100%)	623 (96%)	29 (4%)	24	12
1	B	652/652 (100%)	625 (96%)	27 (4%)	26	14
1	C	652/652 (100%)	624 (96%)	28 (4%)	25	12
1	D	652/652 (100%)	626 (96%)	26 (4%)	27	14
All	All	2608/2608 (100%)	2498 (96%)	110 (4%)	25	13

5 of 110 residues with a non-rotameric sidechain are listed below:

Mol	Chain	Res	Type
1	C	75	ASN
1	C	503	MET
1	D	759	LEU
1	D	536	LYS
1	C	125	ARG

Sometimes sidechains can be flipped to improve hydrogen bonding and reduce clashes. 5 of 102 such sidechains are listed below:

Mol	Chain	Res	Type
1	C	169	ASN
1	C	612	GLN
1	D	704	HIS
1	C	176	ASN
1	C	393	ASN

### 5.3.3 RNA ⓘ

There are no RNA molecules in this entry.

## 5.4 Non-standard residues in protein, DNA, RNA chains ⓘ

There are no non-standard protein/DNA/RNA residues in this entry.

## 5.5 Carbohydrates ⓘ

20 monosaccharides are modelled in this entry.



In the following table, the Counts columns list the number of bonds (or angles) for which Mogul statistics could be retrieved, the number of bonds (or angles) that are observed in the model and the number of bonds (or angles) that are defined in the Chemical Component Dictionary. The Link column lists molecule types, if any, to which the group is linked. The Z score for a bond length (or angle) is the number of standard deviations the observed value is removed from the expected value. A bond length (or angle) with  $|Z| > 2$  is considered an outlier worth inspection. RMSZ is the root-mean-square of all Z scores of the bond lengths (or angles).

Mol	Type	Chain	Res	Link	Bond lengths			Bond angles		
					Counts	RMSZ	$\# Z  > 2$	Counts	RMSZ	$\# Z  > 2$
2	NAG	E	1	2,1	14,14,15	0.76	0	17,19,21	0.61	0
2	NAG	E	2	2	14,14,15	0.52	0	17,19,21	0.71	1 (5%)
2	NAG	F	1	2,1	14,14,15	0.71	0	17,19,21	0.69	0
2	NAG	F	2	2	14,14,15	0.53	0	17,19,21	0.72	1 (5%)
3	NAG	G	1	3,1	14,14,15	0.52	0	17,19,21	0.72	0
3	NAG	G	2	3	14,14,15	0.61	0	17,19,21	0.67	0
3	BMA	G	3	3	11,11,12	0.46	0	15,15,17	0.63	0
2	NAG	H	1	2,1	14,14,15	0.48	0	17,19,21	0.71	0
2	NAG	H	2	2	14,14,15	0.52	0	17,19,21	0.81	0
2	NAG	I	1	2,1	14,14,15	0.73	0	17,19,21	0.76	0
2	NAG	I	2	2	14,14,15	0.62	0	17,19,21	0.79	1 (5%)
3	NAG	J	1	3,1	14,14,15	0.62	0	17,19,21	0.82	1 (5%)
3	NAG	J	2	3	14,14,15	0.44	0	17,19,21	0.71	0
3	BMA	J	3	3	11,11,12	0.63	0	15,15,17	0.54	0
2	NAG	K	1	2,1	14,14,15	0.66	0	17,19,21	0.55	0
2	NAG	K	2	2	14,14,15	0.49	0	17,19,21	0.66	0
2	NAG	L	1	2,1	14,14,15	0.73	0	17,19,21	0.81	0
2	NAG	L	2	2	14,14,15	0.63	0	17,19,21	0.72	1 (5%)
2	NAG	M	1	2,1	14,14,15	0.72	0	17,19,21	0.62	0
2	NAG	M	2	2	14,14,15	0.57	0	17,19,21	1.08	2 (11%)

In the following table, the Chirals column lists the number of chiral outliers, the number of chiral centers analysed, the number of these observed in the model and the number defined in the Chemical Component Dictionary. Similar counts are reported in the Torsion and Rings columns. '-' means no outliers of that kind were identified.

Mol	Type	Chain	Res	Link	Chirals	Torsions	Rings
2	NAG	E	1	2,1	-	0/6/23/26	0/1/1/1
2	NAG	E	2	2	-	0/6/23/26	0/1/1/1
2	NAG	F	1	2,1	-	0/6/23/26	0/1/1/1
2	NAG	F	2	2	-	2/6/23/26	0/1/1/1
3	NAG	G	1	3,1	-	2/6/23/26	0/1/1/1
3	NAG	G	2	3	-	2/6/23/26	0/1/1/1

*Continued on next page...*

*Continued from previous page...*

Mol	Type	Chain	Res	Link	Chirals	Torsions	Rings
3	BMA	G	3	3	-	2/2/19/22	0/1/1/1
2	NAG	H	1	2,1	-	0/6/23/26	0/1/1/1
2	NAG	H	2	2	-	0/6/23/26	0/1/1/1
2	NAG	I	1	2,1	-	0/6/23/26	0/1/1/1
2	NAG	I	2	2	-	0/6/23/26	0/1/1/1
3	NAG	J	1	3,1	-	2/6/23/26	0/1/1/1
3	NAG	J	2	3	-	3/6/23/26	0/1/1/1
3	BMA	J	3	3	-	1/2/19/22	0/1/1/1
2	NAG	K	1	2,1	-	0/6/23/26	0/1/1/1
2	NAG	K	2	2	-	4/6/23/26	0/1/1/1
2	NAG	L	1	2,1	-	3/6/23/26	0/1/1/1
2	NAG	L	2	2	-	2/6/23/26	0/1/1/1
2	NAG	M	1	2,1	-	0/6/23/26	0/1/1/1
2	NAG	M	2	2	-	3/6/23/26	0/1/1/1

There are no bond length outliers.

The worst 5 of 7 bond angle outliers are listed below:

Mol	Chain	Res	Type	Atoms	Z	Observed(°)	Ideal(°)
2	M	2	NAG	C1-C2-N2	2.68	114.66	110.43
2	I	2	NAG	C2-N2-C7	-2.47	119.59	122.90
2	F	2	NAG	C2-N2-C7	-2.21	119.94	122.90
3	J	1	NAG	C2-N2-C7	-2.20	119.95	122.90
2	E	2	NAG	C2-N2-C7	-2.18	119.98	122.90

There are no chirality outliers.

5 of 26 torsion outliers are listed below:

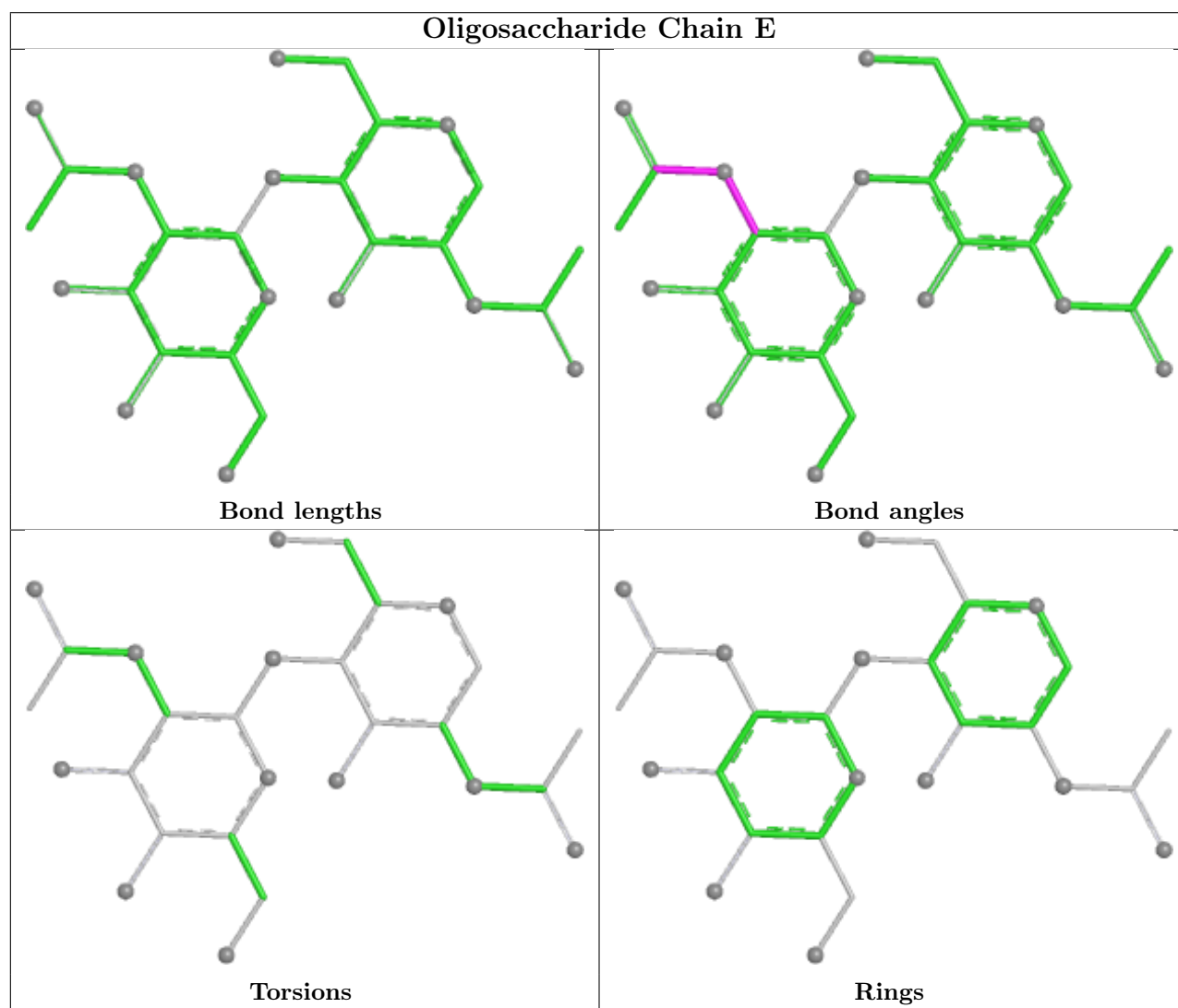
Mol	Chain	Res	Type	Atoms
2	L	1	NAG	C8-C7-N2-C2
2	L	1	NAG	O7-C7-N2-C2
2	M	2	NAG	C1-C2-N2-C7
3	J	2	NAG	C3-C2-N2-C7
3	J	2	NAG	C8-C7-N2-C2

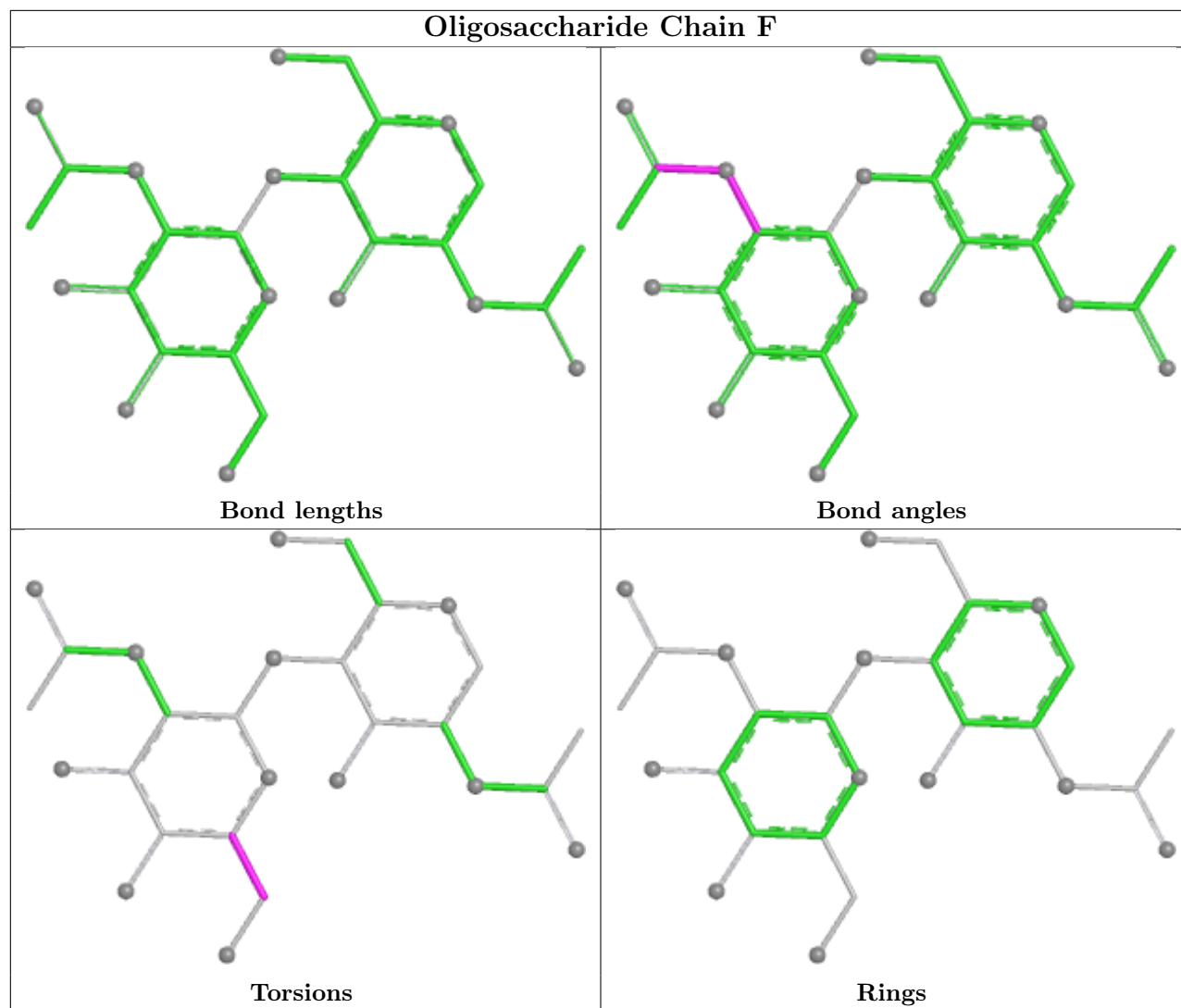
There are no ring outliers.

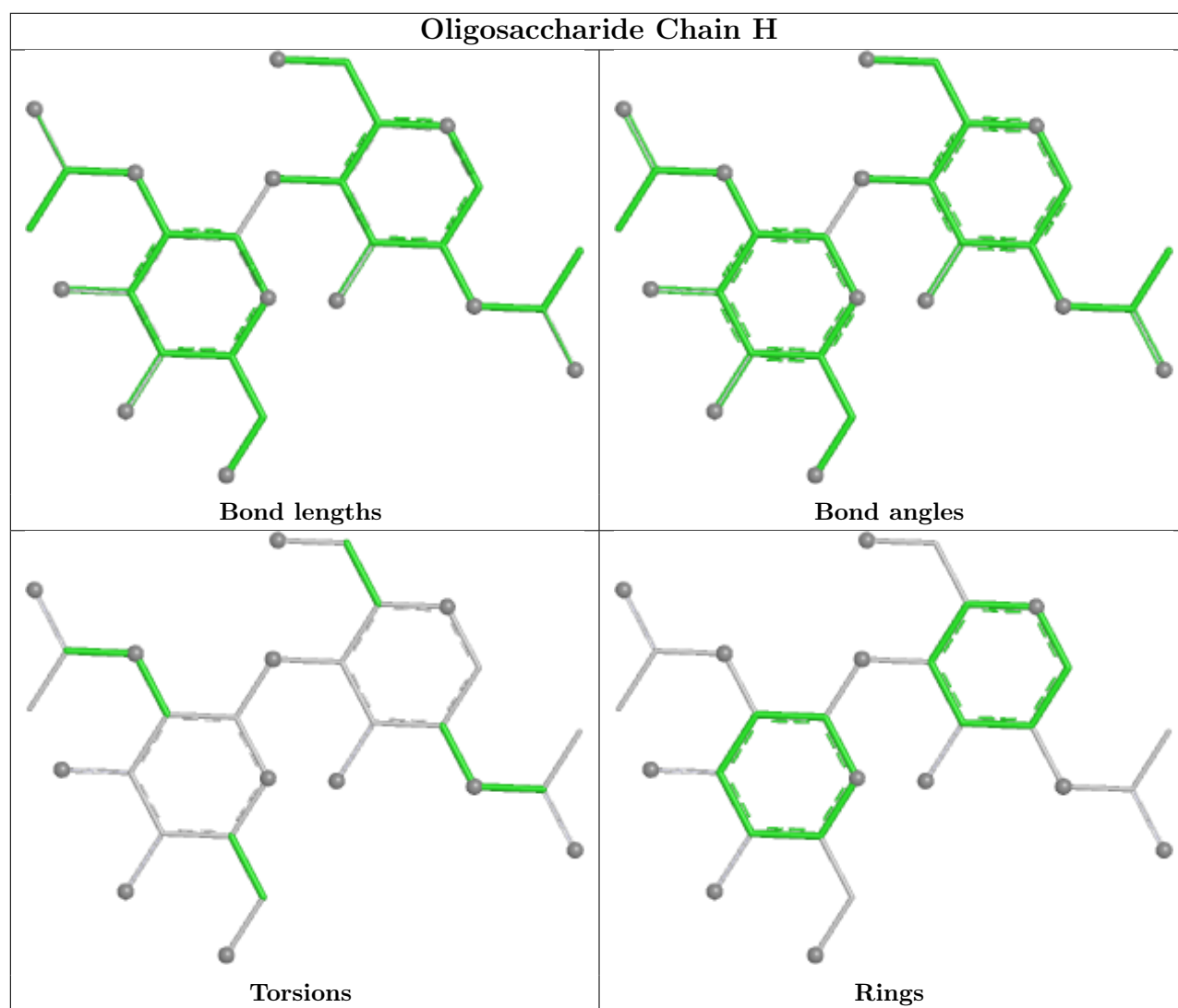
4 monomers are involved in 3 short contacts:

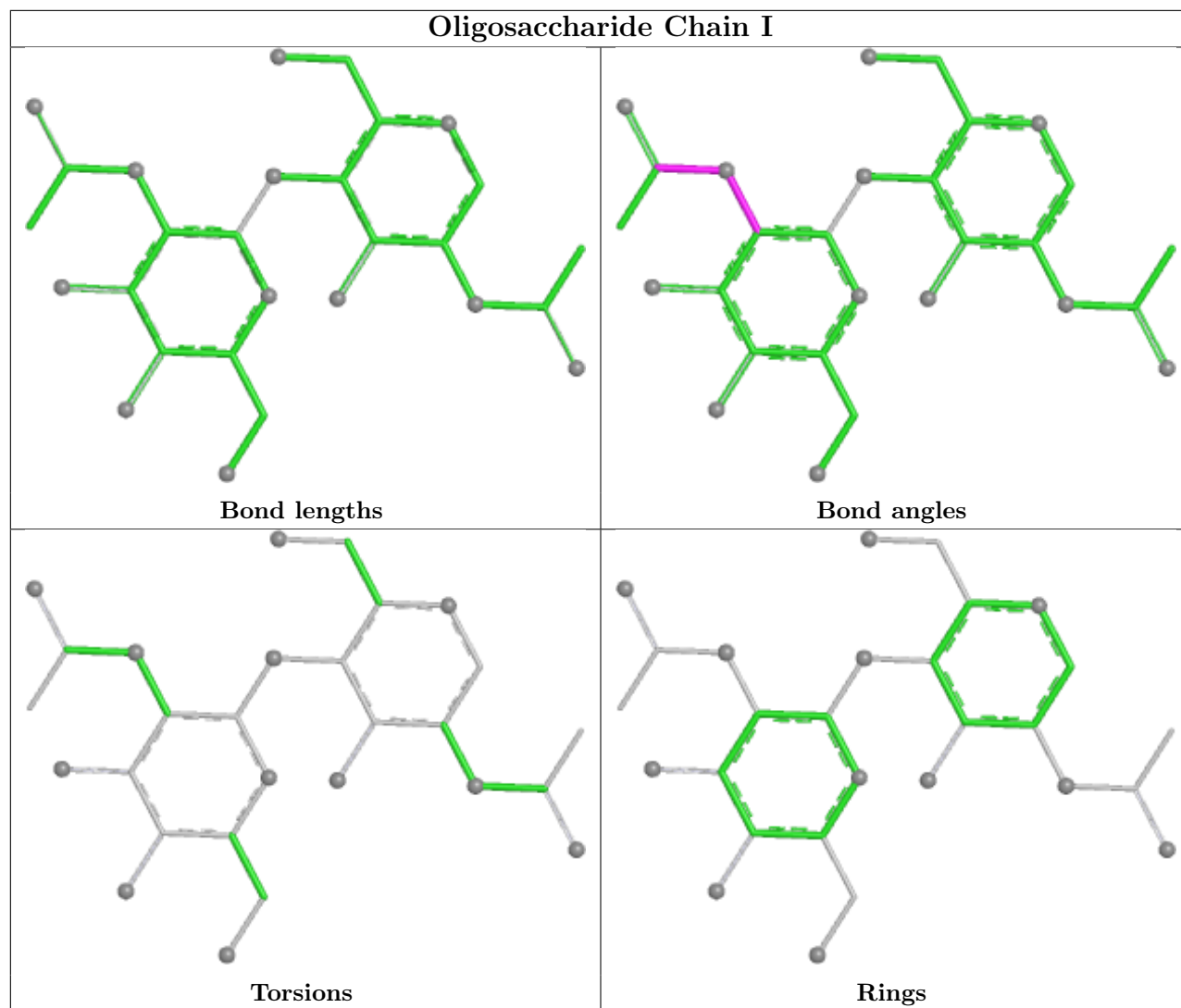
Mol	Chain	Res	Type	Clashes	Symm-Clashes
3	G	1	NAG	1	0
2	F	1	NAG	1	0
3	J	1	NAG	1	0
3	J	2	NAG	1	0

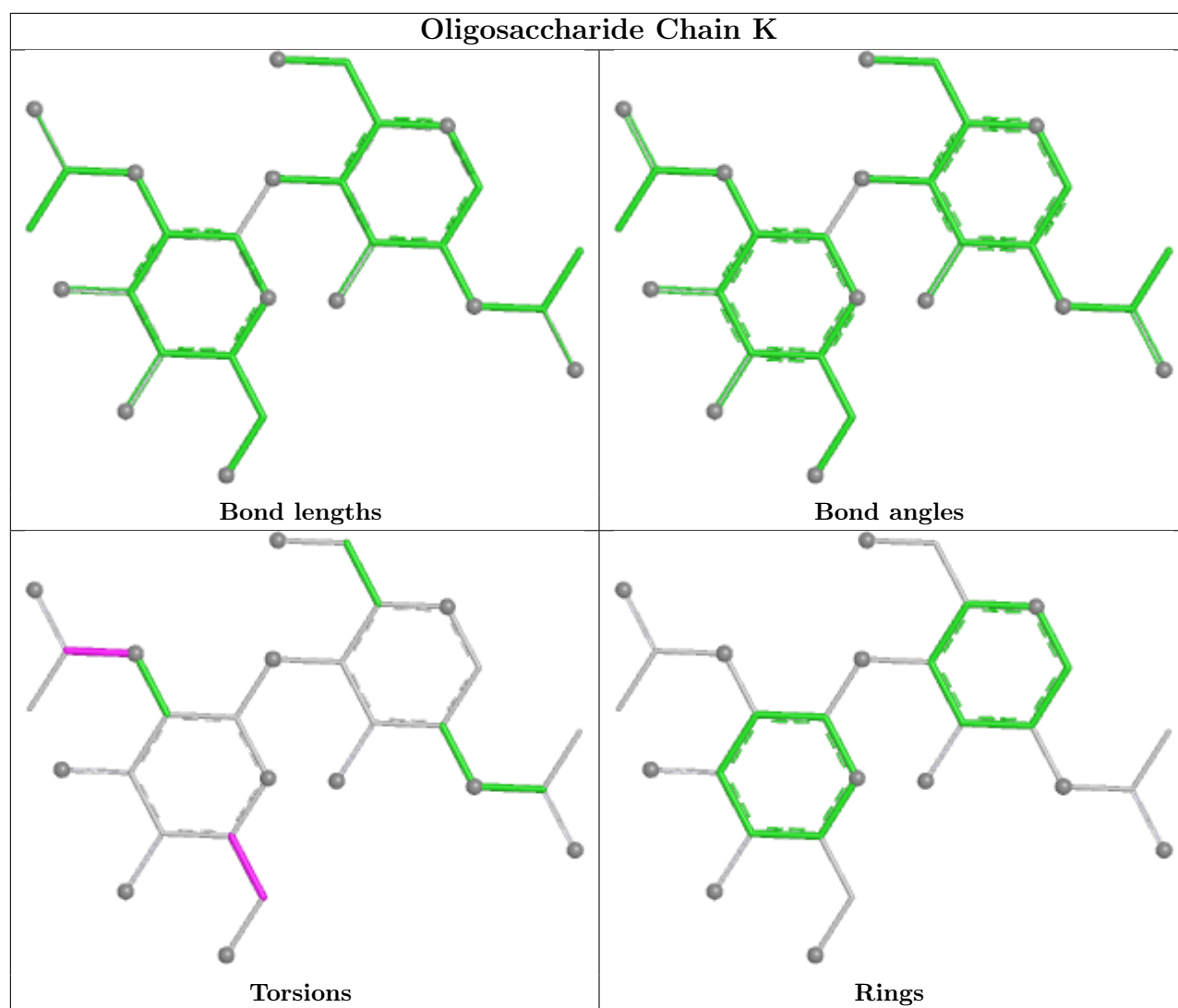
The following is a two-dimensional graphical depiction of Mogul quality analysis of bond lengths, bond angles, torsion angles, and ring geometry for oligosaccharide.

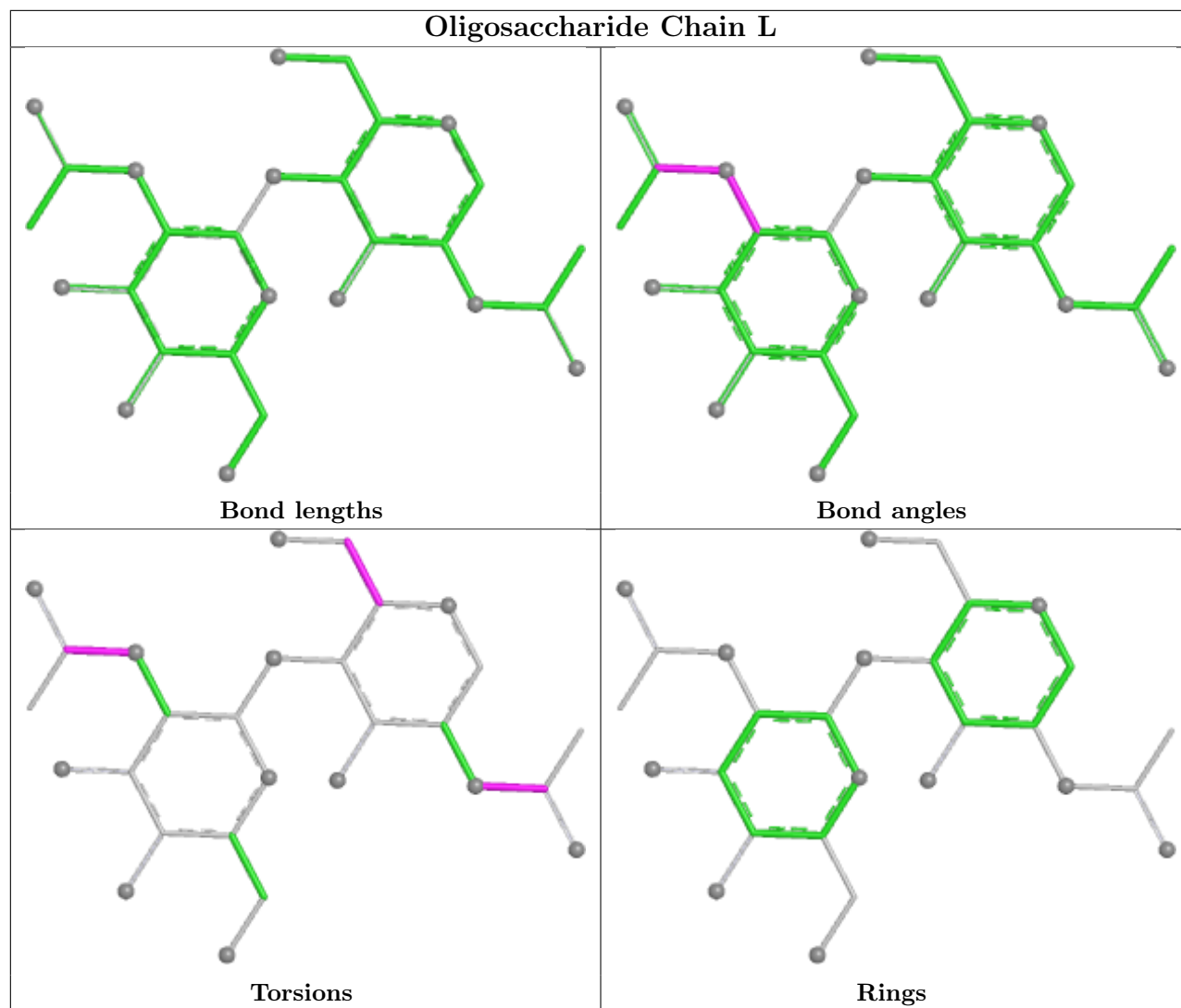




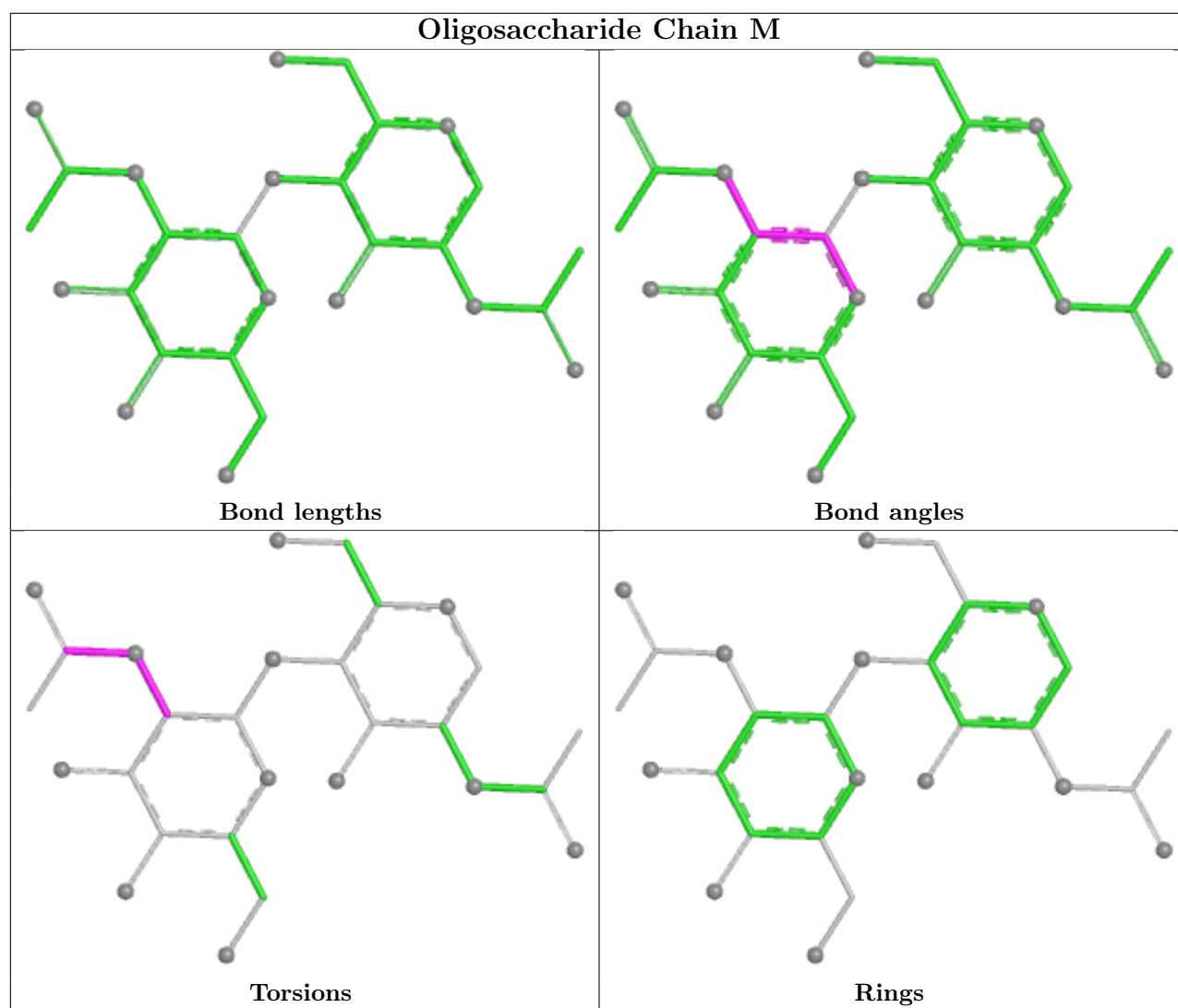


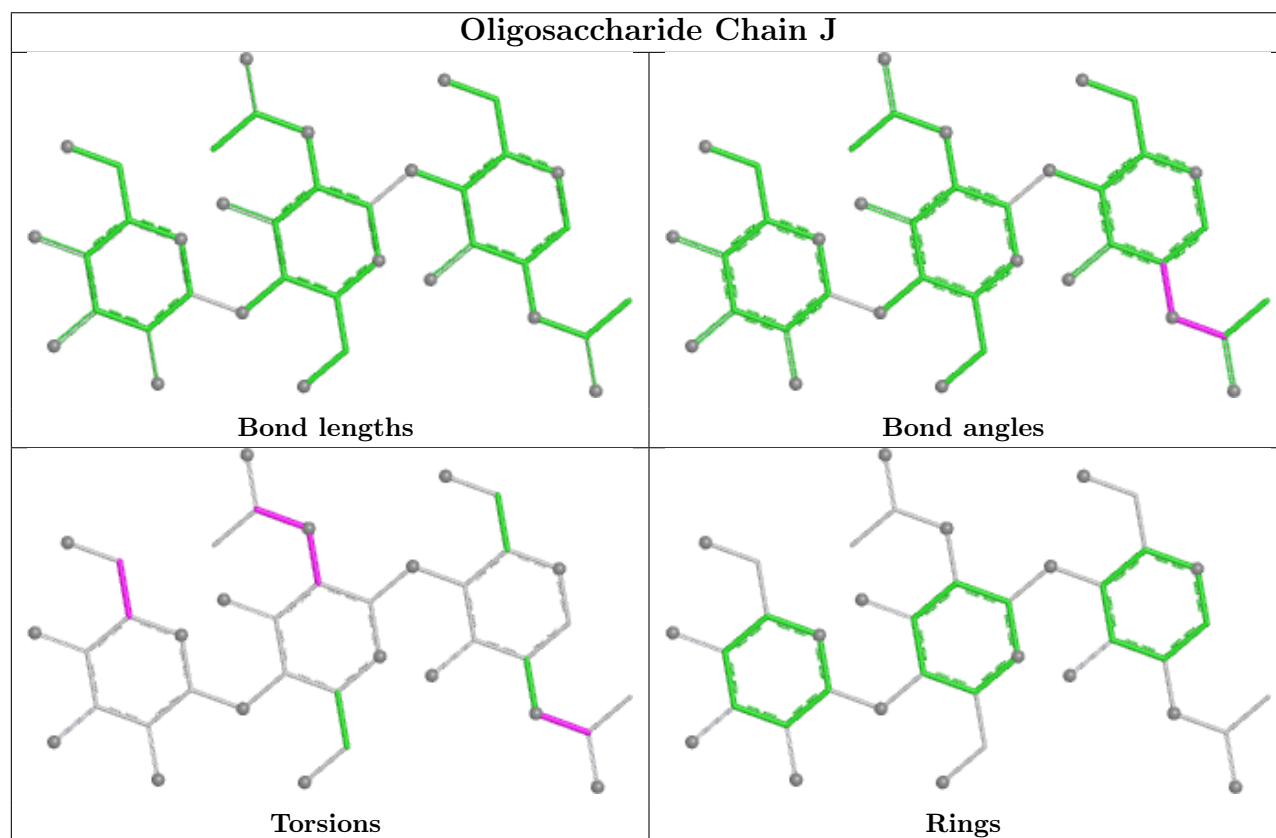
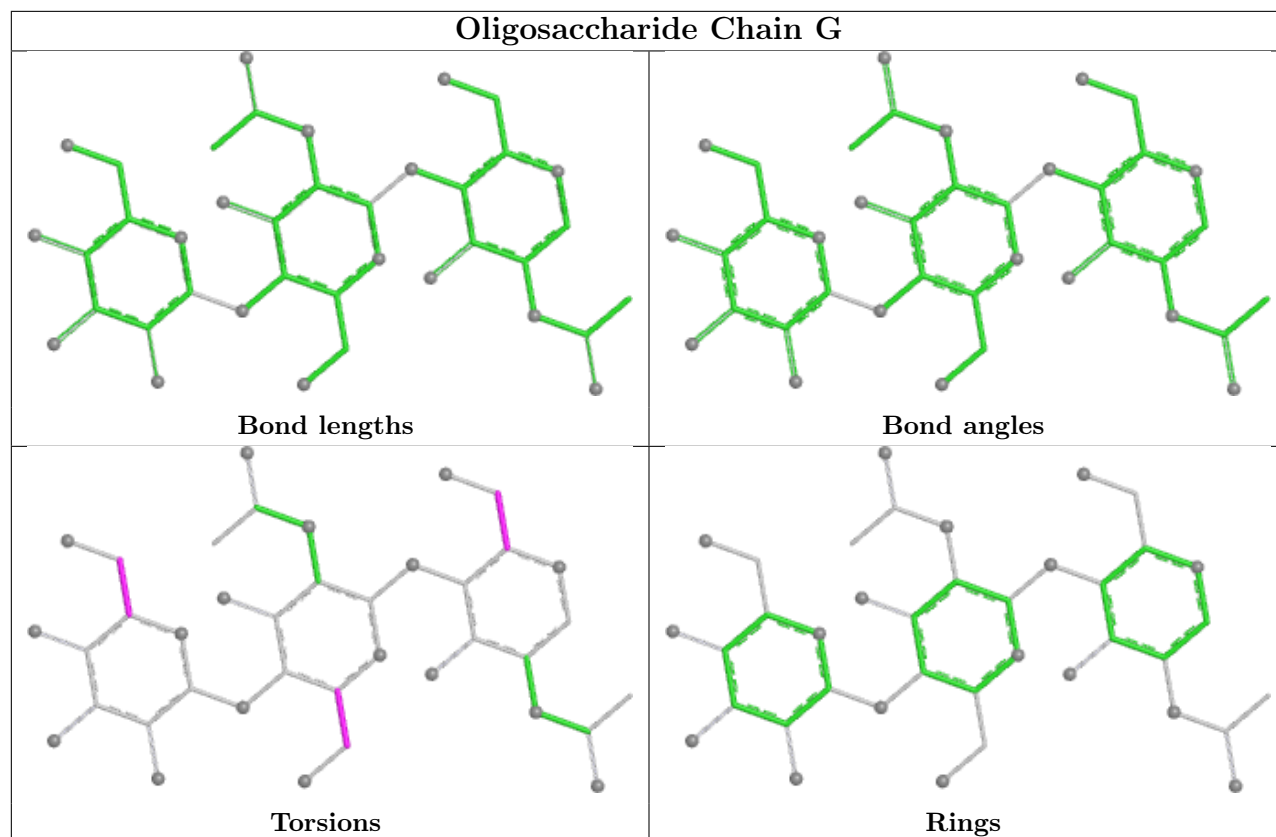












## 5.6 Ligand geometry

19 ligands are modelled in this entry.

In the following table, the Counts columns list the number of bonds (or angles) for which Mogul statistics could be retrieved, the number of bonds (or angles) that are observed in the model and the number of bonds (or angles) that are defined in the Chemical Component Dictionary. The Link column lists molecule types, if any, to which the group is linked. The Z score for a bond length (or angle) is the number of standard deviations the observed value is removed from the expected value. A bond length (or angle) with  $|Z| > 2$  is considered an outlier worth inspection. RMSZ is the root-mean-square of all Z scores of the bond lengths (or angles).

Mol	Type	Chain	Res	Link	Bond lengths			Bond angles		
					Counts	RMSZ	# Z  > 2	Counts	RMSZ	# Z  > 2
4	NAG	C	768(A)	1	14,14,15	0.56	0	17,19,21	0.74	1 (5%)
4	NAG	A	771(A)	1	14,14,15	0.49	0	17,19,21	0.75	1 (5%)
4	NAG	B	773(A)	1	14,14,15	0.56	0	17,19,21	0.79	1 (5%)
4	NAG	C	769(A)	1	14,14,15	0.53	0	17,19,21	0.80	1 (5%)
4	NAG	B	771(A)	1	14,14,15	0.70	0	17,19,21	0.60	0
4	NAG	D	767(A)	1	14,14,15	0.63	0	17,19,21	0.83	1 (5%)
4	NAG	B	767(A)	1	14,14,15	0.51	0	17,19,21	0.79	1 (5%)
4	NAG	A	768(A)	1	14,14,15	0.58	0	17,19,21	0.73	0
4	NAG	B	772(A)	1	14,14,15	0.63	0	17,19,21	0.86	0
4	NAG	A	767(A)	1	14,14,15	0.66	0	17,19,21	0.65	0
4	NAG	C	770(A)	1	14,14,15	0.62	0	17,19,21	0.64	0
5	SO4	C	1502	-	4,4,4	0.49	0	6,6,6	0.53	0
5	SO4	A	1500	-	4,4,4	0.58	0	6,6,6	0.65	0
4	NAG	D	773(A)	1	14,14,15	0.64	0	17,19,21	0.69	0
4	NAG	C	771(A)	1	14,14,15	0.51	0	17,19,21	0.91	0
4	NAG	A	772(A)	1	14,14,15	0.58	0	17,19,21	0.79	0
4	NAG	C	767(A)	1	14,14,15	0.46	0	17,19,21	0.72	1 (5%)
5	SO4	B	1501	-	4,4,4	0.36	0	6,6,6	0.58	0
5	SO4	D	1503	-	4,4,4	0.39	0	6,6,6	0.68	0

In the following table, the Chirals column lists the number of chiral outliers, the number of chiral centers analysed, the number of these observed in the model and the number defined in the Chemical Component Dictionary. Similar counts are reported in the Torsion and Rings columns. '-' means no outliers of that kind were identified.

Mol	Type	Chain	Res	Link	Chirals	Torsions	Rings
4	NAG	B	773(A)	1	-	2/6/23/26	0/1/1/1
4	NAG	C	769(A)	1	-	0/6/23/26	0/1/1/1
4	NAG	C	771(A)	1	-	2/6/23/26	0/1/1/1

*Continued on next page...*

*Continued from previous page...*

Mol	Type	Chain	Res	Link	Chirals	Torsions	Rings
4	NAG	D	773(A)	1	-	4/6/23/26	0/1/1/1
4	NAG	B	771(A)	1	-	0/6/23/26	0/1/1/1
4	NAG	A	772(A)	1	-	2/6/23/26	0/1/1/1
4	NAG	D	767(A)	1	-	2/6/23/26	0/1/1/1
4	NAG	C	767(A)	1	-	0/6/23/26	0/1/1/1
4	NAG	C	768(A)	1	-	2/6/23/26	0/1/1/1
4	NAG	B	767(A)	1	-	0/6/23/26	0/1/1/1
4	NAG	A	768(A)	1	-	2/6/23/26	0/1/1/1
4	NAG	B	772(A)	1	-	2/6/23/26	0/1/1/1
4	NAG	A	767(A)	1	-	0/6/23/26	0/1/1/1
4	NAG	A	771(A)	1	-	3/6/23/26	0/1/1/1
4	NAG	C	770(A)	1	-	2/6/23/26	0/1/1/1

There are no bond length outliers.

The worst 5 of 7 bond angle outliers are listed below:

Mol	Chain	Res	Type	Atoms	Z	Observed(°)	Ideal(°)
4	B	773(A)	NAG	C2-N2-C7	-2.59	119.43	122.90
4	D	767(A)	NAG	C2-N2-C7	-2.41	119.67	122.90
4	C	769(A)	NAG	C2-N2-C7	-2.27	119.86	122.90
4	A	771(A)	NAG	C2-N2-C7	-2.22	119.93	122.90
4	B	767(A)	NAG	C2-N2-C7	-2.22	119.93	122.90

There are no chirality outliers.

5 of 23 torsion outliers are listed below:

Mol	Chain	Res	Type	Atoms
4	A	768(A)	NAG	C8-C7-N2-C2
4	A	768(A)	NAG	O7-C7-N2-C2
4	A	771(A)	NAG	C8-C7-N2-C2
4	A	771(A)	NAG	O7-C7-N2-C2
4	C	768(A)	NAG	C8-C7-N2-C2

There are no ring outliers.

5 monomers are involved in 6 short contacts:

Mol	Chain	Res	Type	Clashes	Symm-Clashes
4	C	768(A)	NAG	1	0
4	B	773(A)	NAG	1	0

*Continued on next page...*

*Continued from previous page...*

Mol	Chain	Res	Type	Clashes	Symm-Clashes
4	D	767(A)	NAG	1	0
4	B	767(A)	NAG	1	0
4	A	767(A)	NAG	2	0

## 5.7 Other polymers [i](#)

There are no such residues in this entry.

## 5.8 Polymer linkage issues [i](#)

There are no chain breaks in this entry.

## 6 Fit of model and data [i](#)

### 6.1 Protein, DNA and RNA chains [i](#)

In the following table, the column labelled ‘#RSRZ > 2’ contains the number (and percentage) of RSRZ outliers, followed by percent RSRZ outliers for the chain as percentile scores relative to all X-ray entries and entries of similar resolution. The OWAB column contains the minimum, median, 95<sup>th</sup> percentile and maximum values of the occupancy-weighted average B-factor per residue. The column labelled ‘Q < 0.9’ lists the number of (and percentage) of residues with an average occupancy less than 0.9.

Mol	Chain	Analysed	<RSRZ>	#RSRZ>2	OWAB(Å <sup>2</sup> )	Q<0.9
1	A	724/728 (99%)	0.35	55 (7%) 21 19	19, 33, 61, 90	13 (1%)
1	B	728/728 (100%)	0.10	22 (3%) 52 50	16, 30, 50, 71	12 (1%)
1	C	723/728 (99%)	0.21	37 (5%) 34 31	13, 31, 56, 97	12 (1%)
1	D	728/728 (100%)	0.44	43 (5%) 29 27	20, 36, 63, 87	10 (1%)
All	All	2903/2912 (99%)	0.27	157 (5%) 32 30	13, 32, 59, 97	47 (1%)

The worst 5 of 157 RSRZ outliers are listed below:

Mol	Chain	Res	Type	RSRZ
1	A	81	ALA	5.3
1	C	98	LEU	5.3
1	A	83	TYR	5.0
1	C	95	PHE	5.0
1	A	94	THR	4.9

### 6.2 Non-standard residues in protein, DNA, RNA chains [i](#)

There are no non-standard protein/DNA/RNA residues in this entry.

### 6.3 Carbohydrates [i](#)

In the following table, the Atoms column lists the number of modelled atoms in the group and the number defined in the chemical component dictionary. The B-factors column lists the minimum, median, 95<sup>th</sup> percentile and maximum values of B factors of atoms in the group. The column labelled ‘Q < 0.9’ lists the number of atoms with occupancy less than 0.9.

Mol	Type	Chain	Res	Atoms	RSCC	RSR	B-factors(Å <sup>2</sup> )	Q<0.9
2	NAG	K	2	14/15	0.65	0.15	58,62,64,67	0
2	NAG	M	2	14/15	0.65	0.15	53,56,58,58	0

*Continued on next page...*

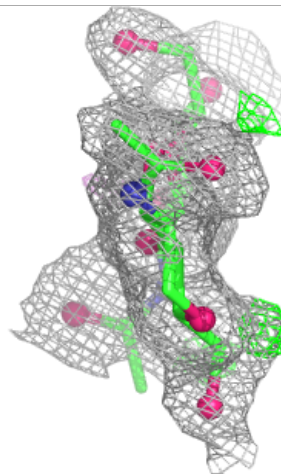
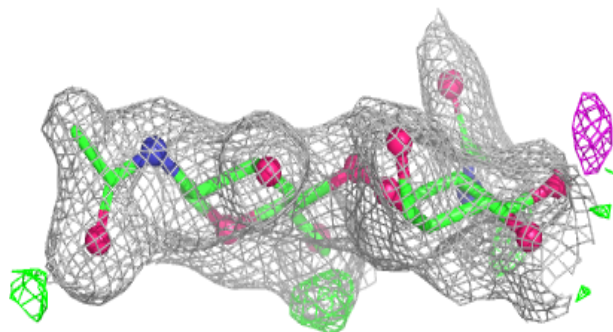
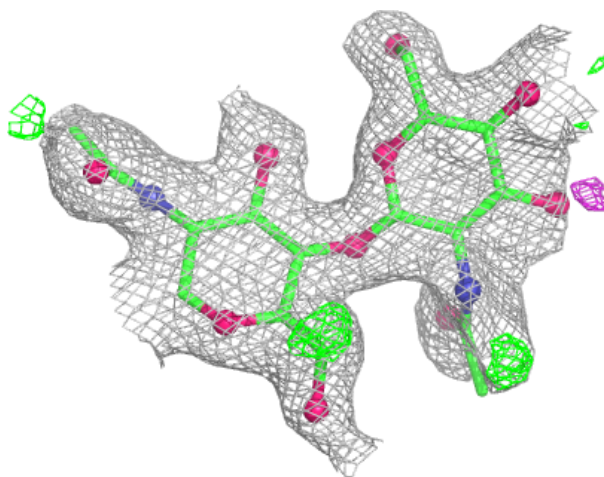
*Continued from previous page...*

Mol	Type	Chain	Res	Atoms	RSCC	RSR	B-factors( $\text{\AA}^2$ )	Q<0.9
2	NAG	E	2	14/15	0.69	0.14	52,57,58,60	0
2	NAG	H	2	14/15	0.69	0.16	52,54,59,62	0
2	NAG	L	1	14/15	0.72	0.15	51,55,57,58	0
3	BMA	J	3	11/12	0.72	0.13	58,59,59,60	0
3	BMA	G	3	11/12	0.73	0.14	60,61,62,64	0
2	NAG	F	2	14/15	0.74	0.13	51,54,57,59	0
3	NAG	J	2	14/15	0.78	0.14	60,62,70,70	0
2	NAG	L	2	14/15	0.78	0.12	58,59,61,61	0
3	NAG	J	1	14/15	0.80	0.12	56,59,60,61	0
2	NAG	I	2	14/15	0.81	0.11	45,50,54,55	0
3	NAG	G	2	14/15	0.82	0.14	51,54,55,58	0
2	NAG	M	1	14/15	0.84	0.11	34,41,45,50	0
3	NAG	G	1	14/15	0.87	0.12	44,47,49,52	0
2	NAG	H	1	14/15	0.88	0.09	27,36,41,44	0
2	NAG	F	1	14/15	0.89	0.09	31,38,44,46	0
2	NAG	E	1	14/15	0.90	0.08	31,36,43,44	0
2	NAG	K	1	14/15	0.91	0.09	35,40,44,50	0
2	NAG	I	1	14/15	0.92	0.07	30,35,41,42	0

The following is a graphical depiction of the model fit to experimental electron density for oligosaccharide. Each fit is shown from different orientation to approximate a three-dimensional view.

**Electron density around Chain E:**

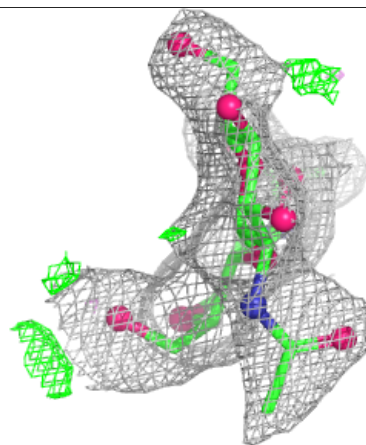
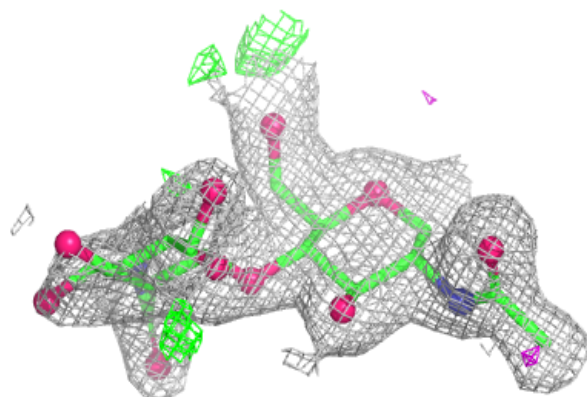
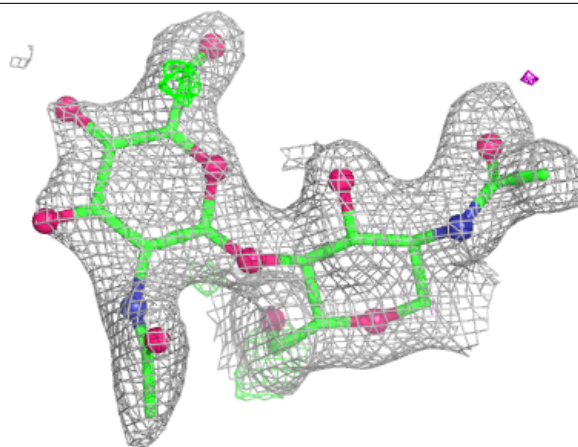
$2mF_o-DF_c$  (at 0.7 rmsd) in gray  
 $mF_o-DF_c$  (at 3 rmsd) in purple (negative)  
and green (positive)





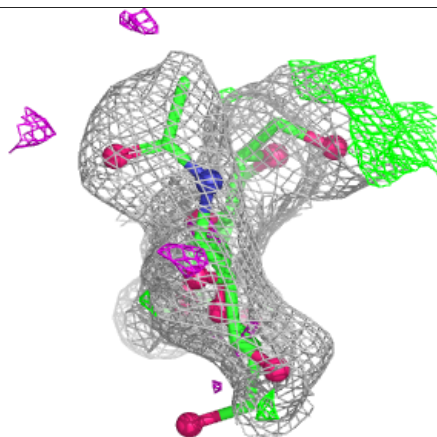
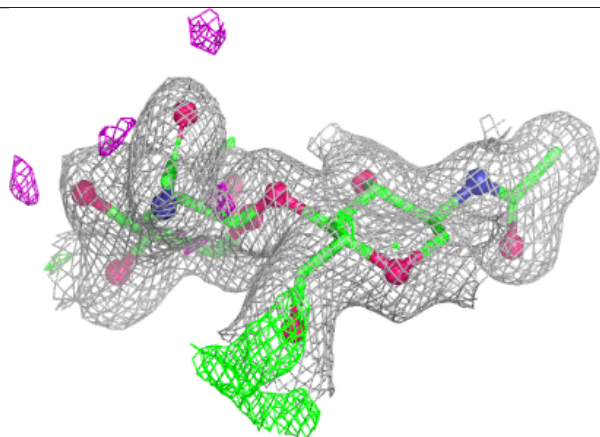
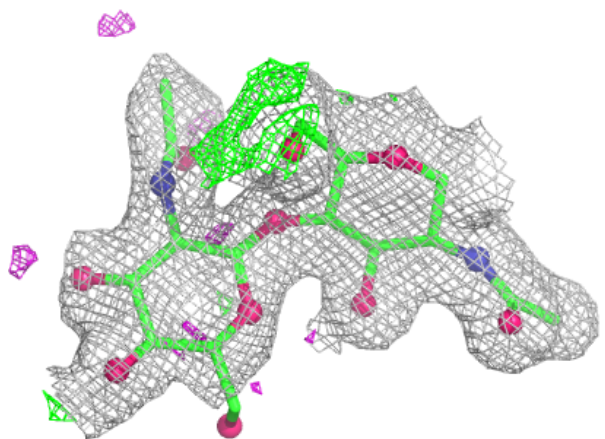
**Electron density around Chain F:**

$2mF_o - DF_c$  (at 0.7 rmsd) in gray  
 $mF_o - DF_c$  (at 3 rmsd) in purple (negative)  
and green (positive)



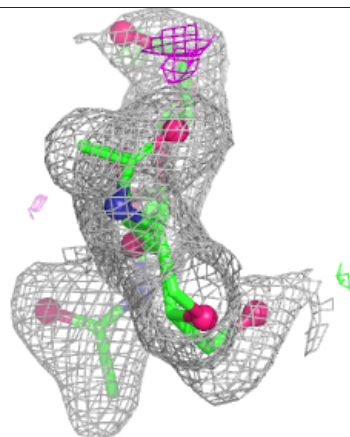
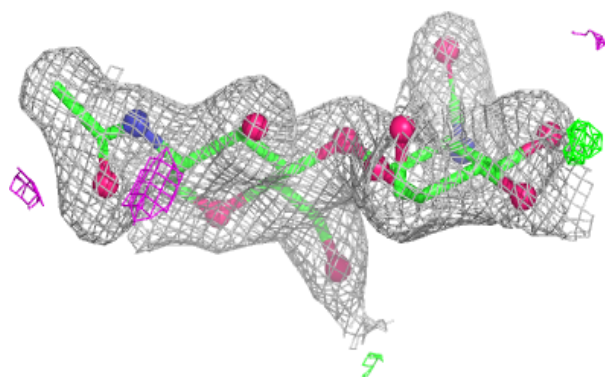
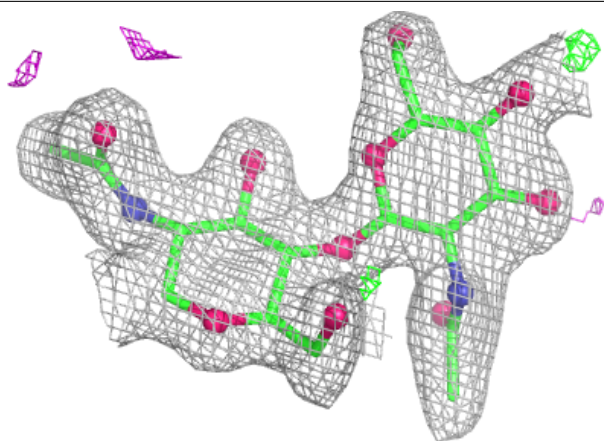
**Electron density around Chain H:**

$2mF_o - DF_c$  (at 0.7 rmsd) in gray  
 $mF_o - DF_c$  (at 3 rmsd) in purple (negative)  
and green (positive)



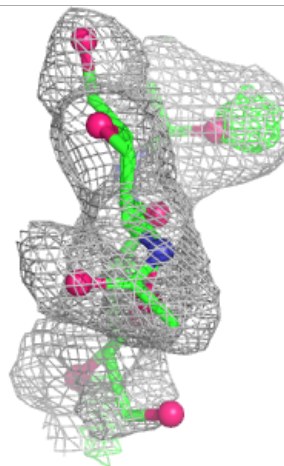
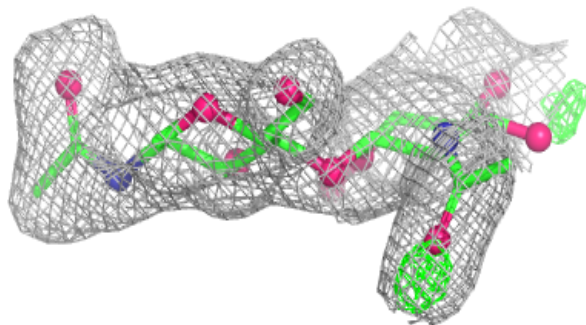
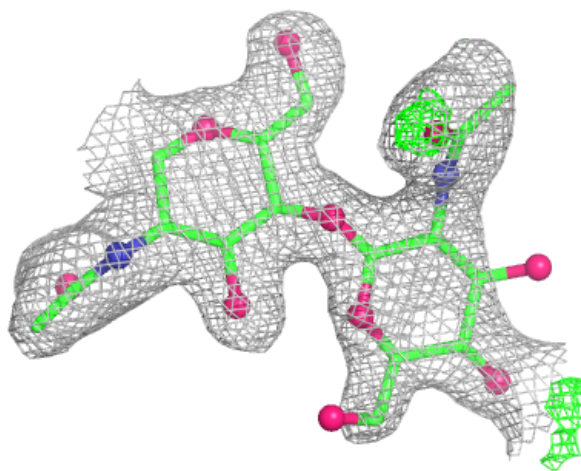
**Electron density around Chain I:**

$2mF_o-DF_c$  (at 0.7 rmsd) in gray  
 $mF_o-DF_c$  (at 3 rmsd) in purple (negative)  
and green (positive)



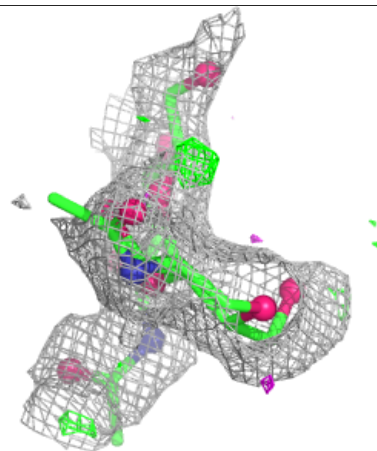
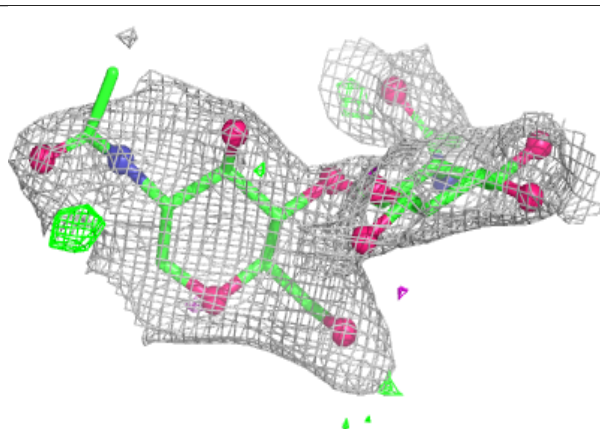
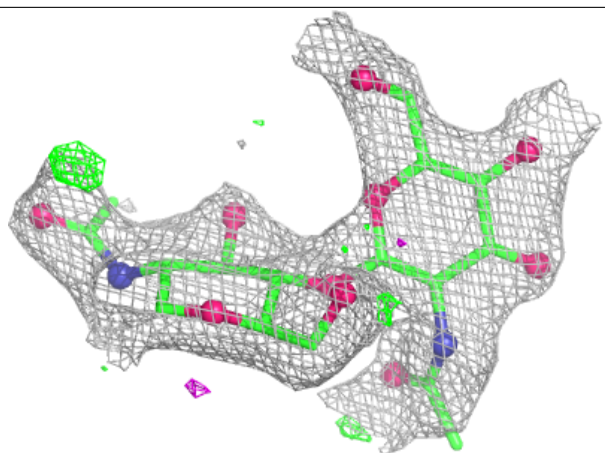
**Electron density around Chain K:**

$2mF_o-DF_c$  (at 0.7 rmsd) in gray  
 $mF_o-DF_c$  (at 3 rmsd) in purple (negative)  
and green (positive)



**Electron density around Chain L:**

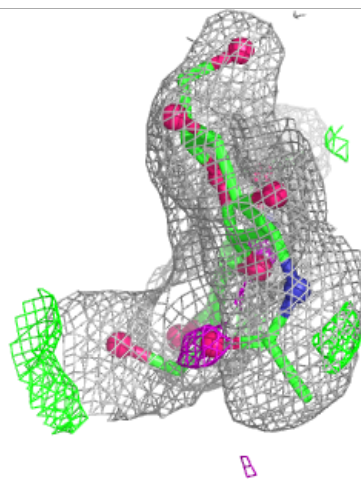
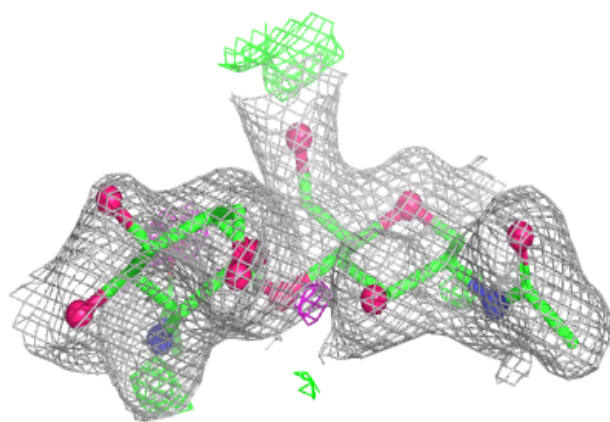
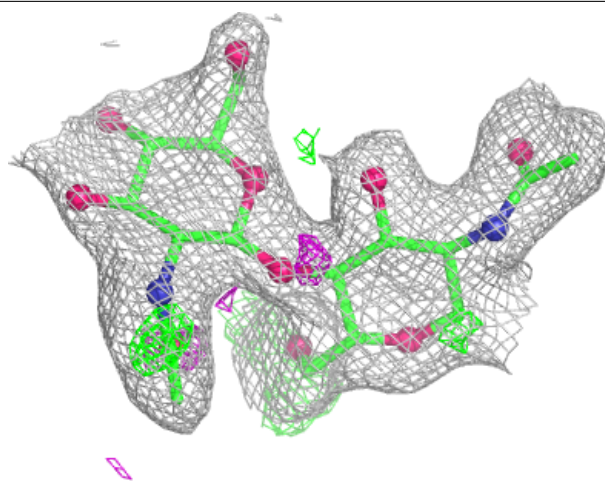
$2mF_o-DF_c$  (at 0.7 rmsd) in gray  
 $mF_o-DF_c$  (at 3 rmsd) in purple (negative)  
and green (positive)





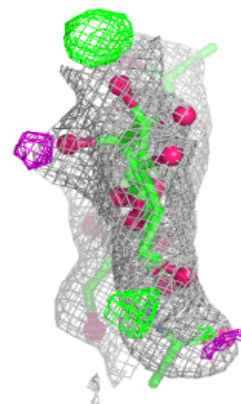
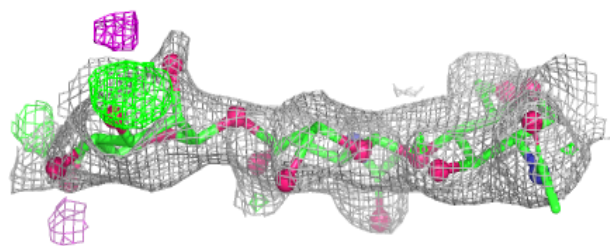
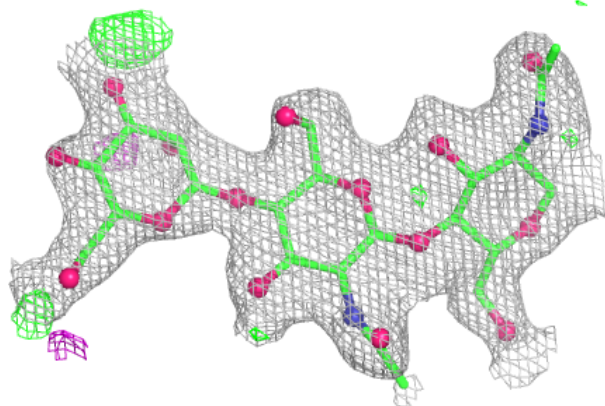
**Electron density around Chain M:**

$2mF_o-DF_c$  (at 0.7 rmsd) in gray  
 $mF_o-DF_c$  (at 3 rmsd) in purple (negative)  
and green (positive)

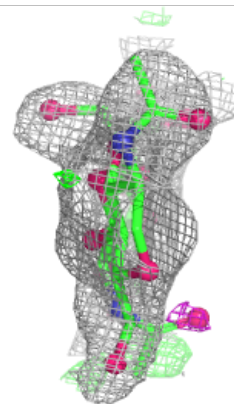
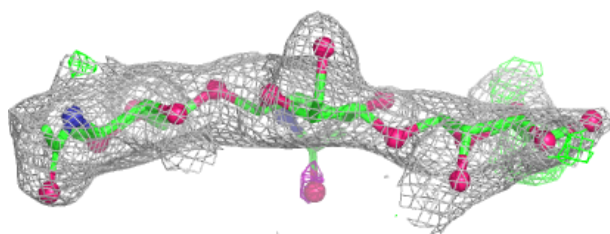
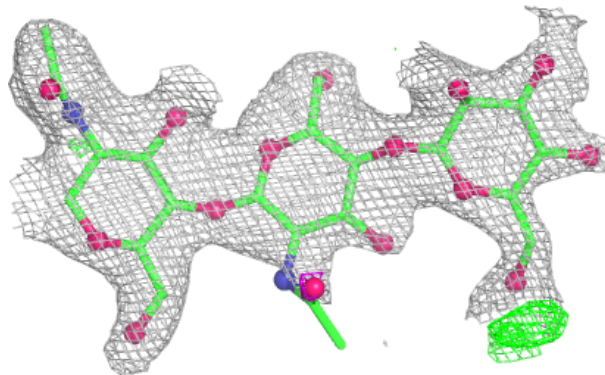


**Electron density around Chain G:**

$2mF_o-DF_c$  (at 0.7 rmsd) in gray  
 $mF_o-DF_c$  (at 3 rmsd) in purple (negative)  
and green (positive)

**Electron density around Chain J:**

$2mF_o-DF_c$  (at 0.7 rmsd) in gray  
 $mF_o-DF_c$  (at 3 rmsd) in purple (negative)  
and green (positive)



## 6.4 Ligands [i](#)

In the following table, the Atoms column lists the number of modelled atoms in the group and the number defined in the chemical component dictionary. The B-factors column lists the minimum, median, 95<sup>th</sup> percentile and maximum values of B factors of atoms in the group. The column labelled 'Q< 0.9' lists the number of atoms with occupancy less than 0.9.

Mol	Type	Chain	Res	Atoms	RSCC	RSR	B-factors(Å <sup>2</sup> )	Q<0.9
4	NAG	D	767(A)	14/15	0.24	0.19	62,64,65,65	0
4	NAG	A	767(A)	14/15	0.43	0.16	70,73,73,74	0
4	NAG	D	773(A)	14/15	0.59	0.18	59,63,66,66	0
4	NAG	A	771(A)	14/15	0.63	0.17	50,53,55,56	3
4	NAG	C	771(A)	14/15	0.64	0.15	47,52,56,56	0
4	NAG	C	768(A)	14/15	0.66	0.18	82,84,87,87	0
4	NAG	C	767(A)	14/15	0.70	0.14	60,62,64,66	0
4	NAG	B	772(A)	14/15	0.75	0.13	45,47,50,51	0
4	NAG	A	768(A)	14/15	0.75	0.16	78,78,79,79	0
4	NAG	B	767(A)	14/15	0.76	0.15	65,66,69,70	0
4	NAG	C	770(A)	14/15	0.80	0.12	39,41,47,49	0
4	NAG	A	772(A)	14/15	0.81	0.12	44,48,54,54	0
4	NAG	B	773(A)	14/15	0.87	0.10	41,45,50,52	0
4	NAG	C	769(A)	14/15	0.88	0.10	31,36,40,43	0
4	NAG	B	771(A)	14/15	0.90	0.09	30,34,39,43	0
5	SO4	D	1503	5/5	0.93	0.10	38,40,41,42	0
5	SO4	B	1501	5/5	0.97	0.08	28,29,30,33	0
5	SO4	A	1500	5/5	0.97	0.08	33,34,35,37	0
5	SO4	C	1502	5/5	0.98	0.06	31,32,33,33	0

## 6.5 Other polymers [i](#)

There are no such residues in this entry.