



Full wwPDB EM Validation Report ⓘ

Apr 1, 2025 – 10:54 PM EDT

PDB ID : 8OER / pdb_00008oer
EMDB ID : EMD-16808
Title : MUC5B amino acids 26-1435
Authors : Khmelnsky, L.; Fass, D.
Deposited on : 2023-03-12
Resolution : 3.00 Å(reported)

This is a Full wwPDB EM Validation Report for a publicly released PDB entry.

We welcome your comments at validation@mail.wwpdb.org

A user guide is available at

<https://www.wwpdb.org/validation/2017/EMValidationReportHelp>

with specific help available everywhere you see the ⓘ symbol.

The types of validation reports are described at

<http://www.wwpdb.org/validation/2017/FAQs#types>.

The following versions of software and data (see [references ⓘ](#)) were used in the production of this report:

EMDB validation analysis : 0.0.1.dev117
Mogul : 2022.3.0, CSD as543be (2022)
MolProbity : 4.02b-467
Percentile statistics : 20231227.v01 (using entries in the PDB archive December 27th 2023)
MapQ : 1.9.13
Ideal geometry (proteins) : Engh & Huber (2001)
Ideal geometry (DNA, RNA) : Parkinson et al. (1996)
Validation Pipeline (wwPDB-VP) : 2.42

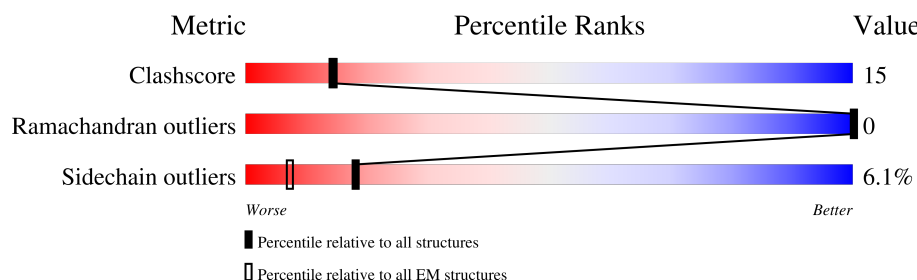
1 Overall quality at a glance

The following experimental techniques were used to determine the structure:

ELECTRON MICROSCOPY

The reported resolution of this entry is 3.00 Å.

Percentile scores (ranging between 0-100) for global validation metrics of the entry are shown in the following graphic. The table shows the number of entries on which the scores are based.



Metric	Whole archive (#Entries)	EM structures (#Entries)
Clashscore	210492	15764
Ramachandran outliers	207382	16835
Sidechain outliers	206894	16415

The table below summarises the geometric issues observed across the polymeric chains and their fit to the map. The red, orange, yellow and green segments of the bar indicate the fraction of residues that contain outliers for ≥ 3 , 2, 1 and 0 types of geometric quality criteria respectively. A grey segment represents the fraction of residues that are not modelled. The numeric value for each fraction is indicated below the corresponding segment, with a dot representing fractions $\leq 5\%$. The upper red bar (where present) indicates the fraction of residues that have poor fit to the EM map (all-atom inclusion $< 40\%$). The numeric value is given above the bar.

Mol	Chain	Length	Quality of chain
1	A	760	 65% 27% • 6%
1	B	760	 61% 30% • 6%
2	C	460	 61% 35% • •
2	D	460	 63% 33% • •
3	I	100	 12% 68% 28% •
3	J	100	 11% 64% 34% •

2 Entry composition

There are 5 unique types of molecules in this entry. The entry contains 19282 atoms, of which 0 are hydrogens and 0 are deuteriums.

In the tables below, the AltConf column contains the number of residues with at least one atom in alternate conformation and the Trace column contains the number of residues modelled with at most 2 atoms.

- Molecule 1 is a protein called Mucin-5B.

Mol	Chain	Residues	Atoms					AltConf	Trace
1	A	715	Total	C	N	O	S	2	0
			5383	3331	943	1041	68		
1	B	715	Total	C	N	O	S	2	0
			5383	3331	943	1041	68		

- Molecule 2 is a protein called Mucin-5B.

Mol	Chain	Residues	Atoms					AltConf	Trace
2	C	453	Total	C	N	O	S	0	0
			3410	2107	590	659	54		
2	D	453	Total	C	N	O	S	0	0
			3410	2107	590	659	54		

- Molecule 3 is a protein called Mucin-5B.

Mol	Chain	Residues	Atoms					AltConf	Trace
3	I	100	Total	C	N	O	S	0	0
			781	482	137	149	13		
3	J	100	Total	C	N	O	S	0	0
			781	482	137	149	13		

- Molecule 4 is 2-acetamido-2-deoxy-beta-D-glucopyranose (CCD ID: NAG) (formula: C₈H₁₅NO₆).



Mol	Chain	Residues	Atoms				AltConf
4	A	1	Total	C	N	O	0
			14	8	1	5	
4	A	1	Total	C	N	O	0
			14	8	1	5	
4	A	1	Total	C	N	O	0
			14	8	1	5	
4	A	1	Total	C	N	O	0
			14	8	1	5	
4	B	1	Total	C	N	O	0
			14	8	1	5	
4	B	1	Total	C	N	O	0
			14	8	1	5	
4	B	1	Total	C	N	O	0
			14	8	1	5	
4	B	1	Total	C	N	O	0
			14	8	1	5	
4	C	1	Total	C	N	O	0
			14	8	1	5	

- Molecule 5 is CALCIUM ION (CCD ID: CA) (formula: Ca).

Mol	Chain	Residues	Atoms		AltConf
5	A	2	Total	Ca	0
			2	2	
5	B	2	Total	Ca	0
			2	2	
5	C	1	Total	Ca	0
			1	1	

Continued on next page...

Continued from previous page...

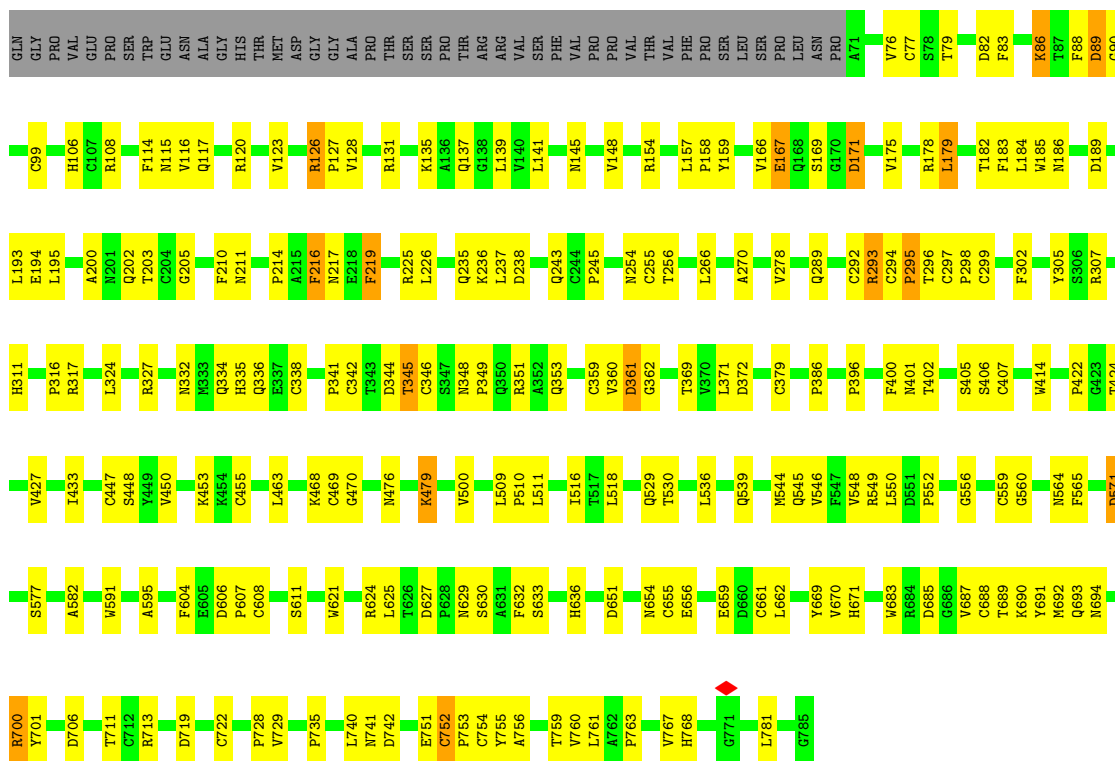
Mol	Chain	Residues	Atoms		AltConf
5	D	1	Total 1	Ca 1	0
5	I	1	Total 1	Ca 1	0
5	J	1	Total 1	Ca 1	0

3 Residue-property plots

These plots are drawn for all protein, RNA, DNA and oligosaccharide chains in the entry. The first graphic for a chain summarises the proportions of the various outlier classes displayed in the second graphic. The second graphic shows the sequence view annotated by issues in geometry and atom inclusion in map density. Residues are color-coded according to the number of geometric quality criteria for which they contain at least one outlier: green = 0, yellow = 1, orange = 2 and red = 3 or more. A red diamond above a residue indicates a poor fit to the EM map for this residue (all-atom inclusion < 40%). Stretches of 2 or more consecutive residues without any outlier are shown as a green connector. Residues present in the sample, but not in the model, are shown in grey.

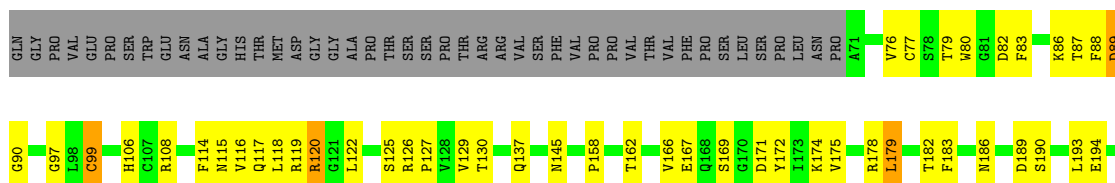
• Molecule 1: Mucin-5B

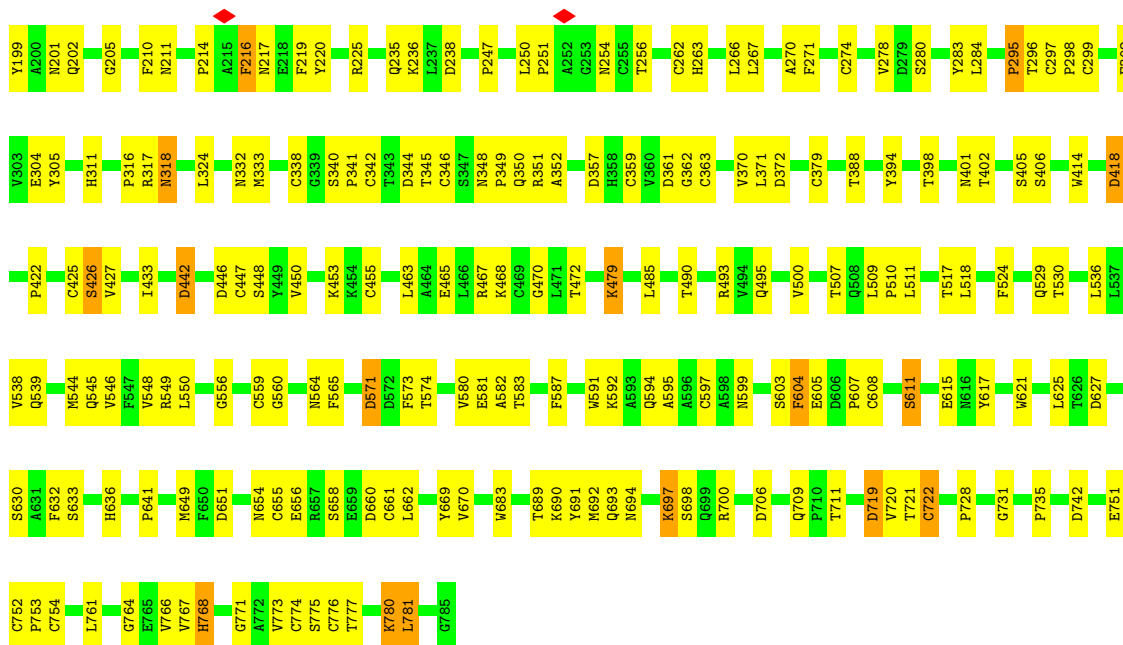
Chain A: 



• Molecule 1: Mucin-5B

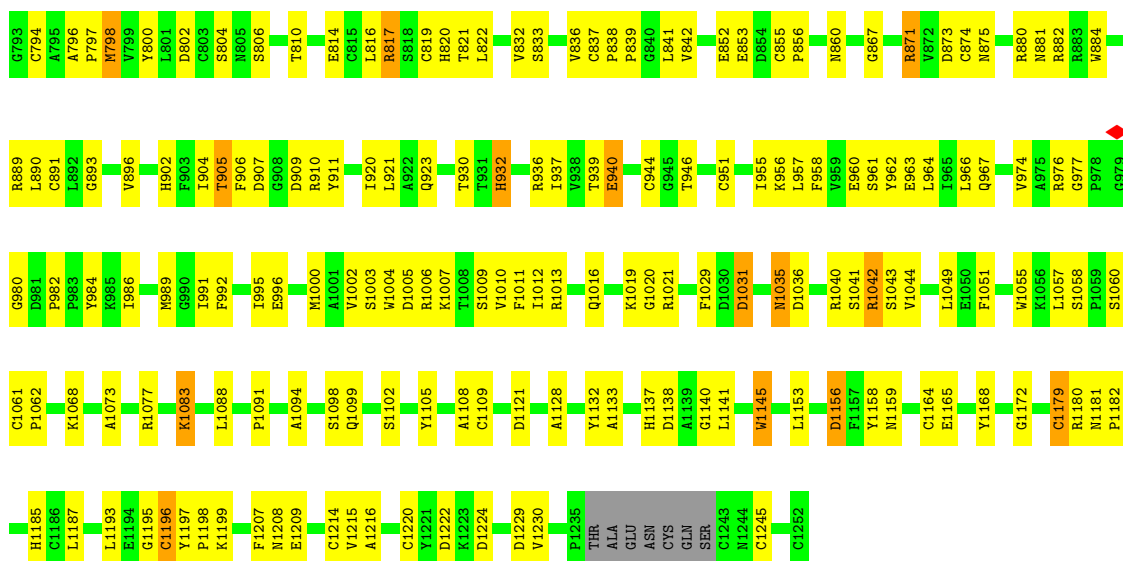
Chain B: 





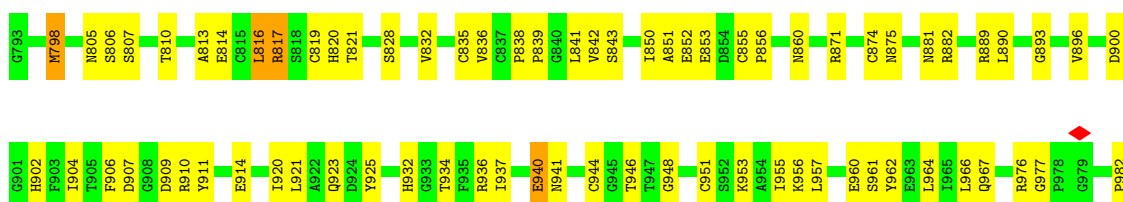
• Molecule 2: Mucin-5B

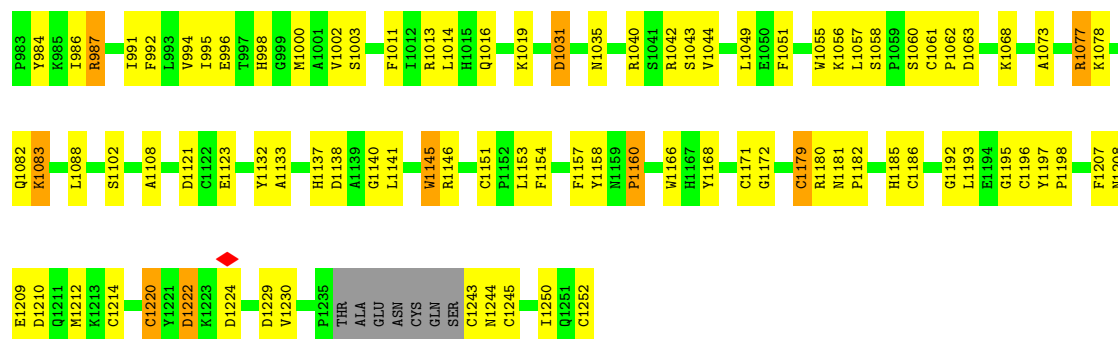
Chain C: 61% 35%



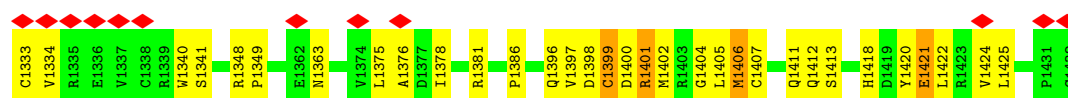
• Molecule 2: Mucin-5B

Chain D: 63% 33%

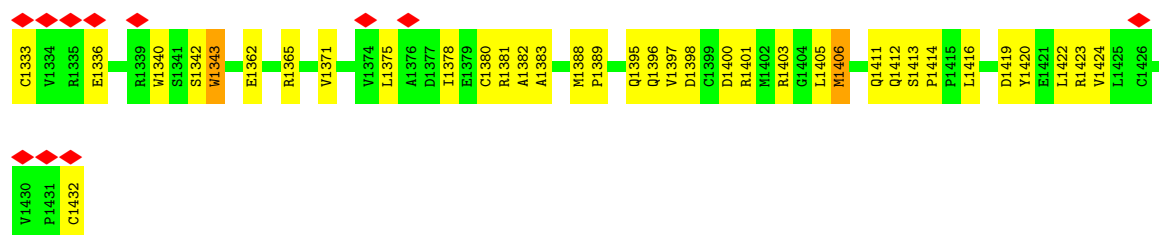




• Molecule 3: Mucin-5B



• Molecule 3: Mucin-5B



4 Experimental information

Property	Value	Source
EM reconstruction method	SINGLE PARTICLE	Depositor
Imposed symmetry	POINT, Not provided	
Number of particles used	88708	Depositor
Resolution determination method	FSC 0.143 CUT-OFF	Depositor
CTF correction method	PHASE FLIPPING AND AMPLITUDE CORRECTION	Depositor
Microscope	FEI TITAN KRIOS	Depositor
Voltage (kV)	300	Depositor
Electron dose ($e^-/\text{\AA}^2$)	48	Depositor
Minimum defocus (nm)	500	Depositor
Maximum defocus (nm)	2000	Depositor
Magnification	Not provided	
Image detector	GATAN K3 BIOQUANTUM (6k x 4k)	Depositor
Maximum map value	0.710	Depositor
Minimum map value	-0.488	Depositor
Average map value	0.000	Depositor
Map value standard deviation	0.014	Depositor
Recommended contour level	0.056	Depositor
Map size (Å)	578.48, 578.48, 578.48	wwPDB
Map dimensions	700, 700, 700	wwPDB
Map angles (°)	90.0, 90.0, 90.0	wwPDB
Pixel spacing (Å)	0.8264, 0.8264, 0.8264	Depositor

5 Model quality [i](#)

5.1 Standard geometry [i](#)

Bond lengths and bond angles in the following residue types are not validated in this section: CA, NAG

The Z score for a bond length (or angle) is the number of standard deviations the observed value is removed from the expected value. A bond length (or angle) with $|Z| > 5$ is considered an outlier worth inspection. RMSZ is the root-mean-square of all Z scores of the bond lengths (or angles).

Mol	Chain	Bond lengths		Bond angles	
		RMSZ	# $ Z > 5$	RMSZ	# $ Z > 5$
1	A	0.37	0/5514	0.59	1/7511 (0.0%)
1	B	0.49	4/5514 (0.1%)	0.64	6/7511 (0.1%)
2	C	0.39	0/3500	0.56	0/4758
2	D	0.40	0/3500	0.55	1/4758 (0.0%)
3	I	0.28	0/800	0.62	0/1087
3	J	0.30	0/800	0.60	1/1087 (0.1%)
All	All	0.41	4/19628 (0.0%)	0.59	9/26712 (0.0%)

All (4) bond length outliers are listed below:

Mol	Chain	Res	Type	Atoms	Z	Observed(Å)	Ideal(Å)
1	B	295	PRO	CG-CD	-17.79	0.92	1.50
1	B	295	PRO	N-CD	10.93	1.63	1.47
1	B	295	PRO	CB-CG	7.95	1.89	1.50
1	B	295	PRO	N-CA	-5.65	1.37	1.47

All (9) bond angle outliers are listed below:

Mol	Chain	Res	Type	Atoms	Z	Observed(°)	Ideal(°)
1	B	295	PRO	CA-N-CD	-13.66	92.38	111.50
1	B	295	PRO	N-CD-CG	-13.29	83.27	103.20
1	A	295	PRO	CA-N-CD	-12.64	93.81	111.50
1	B	295	PRO	CA-CB-CG	-9.49	85.96	104.00
2	D	1160	PRO	CA-N-CD	-6.86	101.89	111.50
1	B	179	LEU	CA-CB-CG	6.12	129.37	115.30
3	J	1389	PRO	CA-N-CD	-6.10	102.96	111.50
1	B	722	CYS	CA-CB-SG	5.46	123.83	114.00
1	B	295	PRO	N-CA-CB	-5.16	96.93	102.60

There are no chirality outliers.

There are no planarity outliers.

5.2 Too-close contacts

In the following table, the Non-H and H(model) columns list the number of non-hydrogen atoms and hydrogen atoms in the chain respectively. The H(added) column lists the number of hydrogen atoms added and optimized by MolProbity. The Clashes column lists the number of clashes within the asymmetric unit, whereas Symm-Clashes lists symmetry-related clashes.

Mol	Chain	Non-H	H(model)	H(added)	Clashes	Symm-Clashes
1	A	5383	0	5055	150	0
1	B	5383	0	5055	172	0
2	C	3410	0	3121	114	0
2	D	3410	0	3122	107	0
3	I	781	0	712	22	0
3	J	781	0	712	30	0
4	A	56	0	52	0	0
4	B	56	0	52	1	0
4	C	14	0	13	0	0
5	A	2	0	0	0	0
5	B	2	0	0	0	0
5	C	1	0	0	0	0
5	D	1	0	0	0	0
5	I	1	0	0	0	0
5	J	1	0	0	0	0
All	All	19282	0	17894	564	0

The all-atom clashscore is defined as the number of clashes found per 1000 atoms (including hydrogen atoms). The all-atom clashscore for this structure is 15.

All (564) close contacts within the same asymmetric unit are listed below, sorted by their clash magnitude.

Atom-1	Atom-2	Interatomic distance (Å)	Clash overlap (Å)
1:B:295:PRO:CG	1:B:295:PRO:CB	1.89	1.49
1:B:295:PRO:CG	1:B:295:PRO:N	1.77	1.44
1:B:295:PRO:CG	1:B:295:PRO:HD3	1.60	1.09
1:B:295:PRO:CG	1:B:295:PRO:HD2	1.60	1.08
1:B:295:PRO:CG	1:B:295:PRO:CA	2.33	1.07
1:B:295:PRO:CD	1:B:295:PRO:HG3	1.57	1.05
1:B:295:PRO:CD	1:B:295:PRO:HG2	1.57	1.03
1:B:295:PRO:CG	1:B:295:PRO:CD	0.91	0.91
1:B:345:THR:HG22	1:B:371:LEU:HB3	1.54	0.89

Continued on next page...

Continued from previous page...

Atom-1	Atom-2	Interatomic distance (Å)	Clash overlap (Å)
1:B:295:PRO:N	1:B:295:PRO:HG3	1.71	0.86
2:D:987:ARG:NH1	2:D:1186:CYS:SG	2.53	0.81
2:D:871:ARG:HH11	2:D:1140:GLY:HA2	1.45	0.79
1:A:651:ASP:HB3	1:A:661:CYS:HB3	1.64	0.78
1:A:338:CYS:HA	1:A:359:CYS:HB3	1.66	0.77
2:D:890:LEU:HB3	2:D:1016:GLN:HG3	1.66	0.77
3:I:1381:ARG:NH1	3:I:1421:GLU:OE1	2.17	0.76
1:A:178:ARG:HD2	1:A:179:LEU:HD23	1.68	0.75
2:C:890:LEU:HB3	2:C:1016:GLN:HG3	1.69	0.75
3:J:1381:ARG:NH1	3:J:1382:ALA:O	2.20	0.75
1:A:427:VAL:HG22	1:A:433:ILE:HG12	1.70	0.74
1:A:332:ASN:ND2	1:A:379:CYS:O	2.22	0.72
1:A:299:CYS:HA	1:A:302:PHE:HD2	1.54	0.72
2:C:875:ASN:ND2	2:C:889:ARG:O	2.21	0.72
1:A:243:GLN:N	1:A:243:GLN:OE1	2.23	0.72
1:B:120:ARG:HB3	1:B:120:ARG:HH11	1.56	0.70
1:B:651:ASP:HB3	1:B:661:CYS:HB3	1.72	0.70
1:B:299:CYS:HA	1:B:302:PHE:HD2	1.56	0.70
2:C:1181:ASN:ND2	2:C:1185:HIS:O	2.23	0.70
2:C:904:ILE:HG12	2:C:910:ARG:HG2	1.74	0.69
2:D:875:ASN:ND2	2:D:889:ARG:O	2.23	0.69
1:A:245:PRO:HD3	3:J:1403:ARG:HH12	1.58	0.68
1:B:332:ASN:ND2	1:B:379:CYS:O	2.26	0.68
1:B:655:CYS:HB3	1:B:658:SER:HA	1.75	0.68
1:B:761:LEU:HD12	1:B:776:CYS:HB2	1.75	0.68
2:D:904:ILE:HG12	2:D:910:ARG:HG2	1.76	0.67
3:I:1376:ALA:O	3:I:1401:ARG:NH2	2.19	0.67
3:I:1381:ARG:HH21	3:I:1386:PRO:HB3	1.57	0.67
1:B:764:GLY:N	1:B:776:CYS:O	2.24	0.67
1:B:82:ASP:HA	1:B:127:PRO:HG3	1.76	0.66
1:A:346:CYS:HA	1:A:349:PRO:HB3	1.77	0.66
2:C:871:ARG:NH1	2:C:873:ASP:O	2.28	0.66
1:A:529:GLN:NE2	1:A:530:THR:O	2.28	0.66
1:B:158:PRO:HG2	2:D:1062:PRO:HG3	1.77	0.66
1:A:453:LYS:HE2	1:A:455:CYS:HA	1.78	0.65
1:B:178:ARG:NE	2:D:940:GLU:OE2	2.30	0.65
1:B:338:CYS:HA	1:B:359:CYS:HB3	1.78	0.65
1:A:158:PRO:HG2	2:C:1062:PRO:HG3	1.79	0.65
1:B:627:ASP:HB3	1:B:630:SER:HB3	1.79	0.65
1:B:493:ARG:HH22	1:B:495:GLN:HE21	1.45	0.65
1:A:179:LEU:HD11	2:C:967:GLN:HG3	1.78	0.65

Continued on next page...

Continued from previous page...

Atom-1	Atom-2	Interatomic distance (Å)	Clash overlap (Å)
1:A:414:TRP:O	2:C:1042:ARG:NH2	2.30	0.65
2:D:1222:ASP:OD1	2:D:1224:ASP:N	2.30	0.65
1:B:280:SER:HA	1:B:283:TYR:HD2	1.61	0.64
1:B:333:MET:HE3	1:B:363:CYS:HB3	1.77	0.64
1:B:605:GLU:OE2	1:B:605:GLU:N	2.26	0.64
2:D:1181:ASN:ND2	2:D:1185:HIS:O	2.30	0.64
1:B:442:ASP:OD1	1:B:442:ASP:N	2.23	0.64
1:A:689:THR:HA	1:A:692:MET:HG2	1.80	0.63
1:A:539:GLN:OE1	1:A:545:GLN:NE2	2.31	0.63
2:D:1056:LYS:NZ	2:D:1063:ASP:OD1	2.24	0.63
1:A:115:ASN:OD1	1:A:117:GLN:NE2	2.30	0.63
1:B:179:LEU:HD11	2:D:967:GLN:HG3	1.81	0.62
2:D:992:PHE:HD2	2:D:1193:LEU:HD13	1.64	0.62
1:A:342:CYS:HB2	1:A:351:ARG:HG3	1.82	0.62
2:D:1123:GLU:OE2	2:D:1123:GLU:N	2.27	0.62
1:A:670:VAL:HG11	1:A:683:TRP:CH2	2.35	0.61
2:C:986:ILE:HG12	2:C:995:ILE:HG12	1.82	0.61
1:B:350:GLN:OE1	1:B:350:GLN:N	2.31	0.61
1:A:182:THR:HB	1:A:194:GLU:HB2	1.82	0.61
1:A:713:ARG:NH1	1:A:742:ASP:OD2	2.34	0.61
2:C:1077:ARG:NH2	2:C:1121:ASP:OD2	2.28	0.61
2:C:905:THR:OG1	2:C:906:PHE:N	2.29	0.61
1:B:345:THR:O	1:B:348:ASN:N	2.34	0.60
1:A:178:ARG:NE	2:C:940:GLU:OE2	2.34	0.60
1:A:345:THR:O	1:A:348:ASN:N	2.35	0.60
1:B:278:VAL:HB	1:B:305:TYR:HE1	1.67	0.60
1:B:529:GLN:NE2	1:B:530:THR:O	2.35	0.60
2:C:1153:LEU:H	2:D:1154:PHE:HD2	1.50	0.60
1:B:453:LYS:HE2	1:B:455:CYS:HA	1.84	0.60
2:D:923:GLN:HB3	2:D:936:ARG:HG2	1.82	0.60
1:A:656:GLU:OE2	1:A:656:GLU:N	2.18	0.60
1:B:120:ARG:HB3	1:B:120:ARG:NH1	2.16	0.60
1:B:418:ASP:OD1	1:B:418:ASP:N	2.34	0.60
1:B:754:CYS:N	1:B:776:CYS:SG	2.72	0.60
1:A:691:TYR:HA	1:A:694:ASN:ND2	2.16	0.60
1:B:86:LYS:HE2	1:B:90:GLY:HA2	1.84	0.59
1:B:182:THR:HB	1:B:194:GLU:HB2	1.83	0.59
2:D:1088:LEU:HD22	2:D:1132:TYR:HD2	1.66	0.59
2:D:1077:ARG:NH2	2:D:1121:ASP:OD2	2.32	0.59
2:D:1198:PRO:HB2	2:D:1214:CYS:SG	2.43	0.59
1:B:690:LYS:HA	1:B:693:GLN:HG3	1.85	0.59

Continued on next page...

Continued from previous page...

Atom-1	Atom-2	Interatomic distance (Å)	Clash overlap (Å)
2:D:955:ILE:HB	2:D:966:LEU:HB2	1.84	0.59
1:B:691:TYR:HA	1:B:694:ASN:ND2	2.16	0.59
2:D:960:GLU:N	2:D:960:GLU:OE2	2.36	0.59
1:B:115:ASN:OD1	1:B:117:GLN:NE2	2.34	0.59
2:D:991:ILE:HG21	2:D:1153:LEU:HD21	1.85	0.59
2:D:994:VAL:HA	2:D:1002:VAL:O	2.03	0.59
1:B:162:THR:OG1	2:D:948:GLY:O	2.17	0.58
1:A:361:ASP:OD1	1:A:362:GLY:N	2.37	0.58
1:A:516:ILE:HG23	1:A:530:THR:HG22	1.86	0.58
1:B:126:ARG:HH21	1:B:297:CYS:HB3	1.68	0.58
3:I:1376:ALA:HB3	3:I:1425:LEU:HD23	1.84	0.58
1:B:414:TRP:CD1	2:D:1043:SER:HB3	2.38	0.58
3:I:1402:MET:SD	3:I:1402:MET:N	2.77	0.58
1:A:450:VAL:HA	1:A:463:LEU:HD23	1.84	0.58
1:A:414:TRP:CD1	2:C:1043:SER:HB3	2.39	0.58
3:I:1381:ARG:HE	3:I:1386:PRO:HA	1.70	0.57
2:C:1002:VAL:HG22	2:C:1012:ILE:HG12	1.85	0.57
2:C:992:PHE:CD2	2:C:1193:LEU:HD13	2.40	0.57
2:C:992:PHE:HD2	2:C:1193:LEU:HD13	1.70	0.57
2:C:991:ILE:HG21	2:C:1153:LEU:HD21	1.87	0.57
2:C:1179:CYS:HB2	2:C:1208:ASN:HA	1.87	0.57
1:A:295:PRO:HD2	1:A:296:THR:N	2.18	0.57
1:A:761:LEU:HD21	1:A:767:VAL:HG11	1.87	0.57
2:C:955:ILE:HB	2:C:966:LEU:HB2	1.87	0.57
2:C:961:SER:HB3	2:C:977:GLY:HA3	1.87	0.57
1:A:500:VAL:HG11	1:A:518:LEU:HD23	1.87	0.57
2:C:923:GLN:HB3	2:C:936:ARG:HG2	1.87	0.57
1:B:137:GLN:HB3	2:D:946:THR:HA	1.86	0.56
1:B:178:ARG:HH22	2:D:956:LYS:HE3	1.71	0.56
1:B:427:VAL:HG22	1:B:433:ILE:HG12	1.85	0.56
1:B:719:ASP:OD2	1:B:722:CYS:HB3	2.06	0.56
3:I:1397:VAL:HG22	3:I:1407:CYS:HB2	1.87	0.56
1:A:299:CYS:HA	1:A:302:PHE:CD2	2.40	0.56
1:B:564:ASN:ND2	1:B:571:ASP:OD2	2.32	0.56
2:D:992:PHE:CD2	2:D:1193:LEU:HD13	2.39	0.56
3:I:1398:ASP:OD2	3:I:1406:MET:HB3	2.05	0.56
1:A:427:VAL:HB	1:A:546:VAL:HG12	1.86	0.56
1:B:178:ARG:HD2	1:B:179:LEU:HD23	1.87	0.56
1:B:538:VAL:HG22	1:B:546:VAL:HG23	1.87	0.56
2:C:798:MET:HE2	2:C:798:MET:O	2.06	0.56
2:D:986:ILE:HG12	2:D:995:ILE:HG12	1.86	0.56

Continued on next page...

Continued from previous page...

Atom-1	Atom-2	Interatomic distance (Å)	Clash overlap (Å)
1:A:691:TYR:HA	1:A:694:ASN:HD22	1.70	0.56
1:A:205:GLY:HA2	1:A:235:GLN:HG2	1.86	0.56
3:J:1396:GLN:N	3:J:1412:GLN:OE1	2.33	0.56
1:A:700:ARG:HG2	1:A:735:PRO:HG3	1.88	0.56
1:B:108:ARG:HB3	1:B:202:GLN:HA	1.88	0.56
2:D:1229:ASP:OD1	2:D:1230:VAL:N	2.38	0.56
2:C:896:VAL:HG22	2:C:1011:PHE:HD1	1.71	0.55
1:B:780:LYS:H	1:B:780:LYS:HD2	1.70	0.55
2:C:1088:LEU:HD22	2:C:1132:TYR:HD2	1.70	0.55
3:J:1362:GLU:N	3:J:1362:GLU:OE1	2.39	0.55
1:A:755:TYR:HE1	1:A:760:VAL:HG22	1.70	0.55
1:B:632:PHE:HB3	1:B:669:TYR:HE2	1.71	0.55
2:C:1043:SER:O	2:C:1043:SER:OG	2.25	0.55
2:D:816:LEU:HD23	2:D:836:VAL:HG13	1.87	0.55
1:A:236:LYS:NZ	1:A:238:ASP:OD1	2.30	0.55
1:B:573:PHE:HB2	1:B:580:VAL:HG13	1.87	0.55
2:D:911:TYR:HH	2:D:1051:PHE:HE2	1.55	0.55
1:A:345:THR:HB	1:A:371:LEU:HB3	1.88	0.55
1:B:266:LEU:HD22	1:B:305:TYR:HD2	1.72	0.55
1:B:754:CYS:HB2	1:B:781:LEU:HD23	1.88	0.55
1:B:250:LEU:HD12	1:B:251:PRO:HD2	1.87	0.55
2:C:1133:ALA:O	2:C:1137:HIS:ND1	2.24	0.55
2:C:1229:ASP:OD1	2:C:1230:VAL:N	2.40	0.55
1:B:500:VAL:HG11	1:B:518:LEU:HD23	1.89	0.55
1:A:401:ASN:HA	1:A:406:SER:HA	1.88	0.55
1:A:624:ARG:NH1	1:A:685:ASP:O	2.26	0.54
2:C:1198:PRO:HB2	2:C:1214:CYS:SG	2.46	0.54
2:D:961:SER:HB3	2:D:977:GLY:HA3	1.89	0.54
1:A:108:ARG:HB3	1:A:202:GLN:HA	1.88	0.54
2:C:974:VAL:O	2:C:976:ARG:HG2	2.06	0.54
2:D:937:ILE:HG12	2:D:957:LEU:HD23	1.88	0.54
1:A:194:GLU:OE2	1:A:311:HIS:NE2	2.40	0.54
1:B:97:GLY:HA2	1:B:247:PRO:HG3	1.89	0.54
3:I:1399:CYS:HA	3:I:1404:GLY:O	2.08	0.54
3:I:1401:ARG:HG2	3:I:1402:MET:SD	2.48	0.54
1:A:659:GLU:HG2	1:A:690:LYS:HE2	1.90	0.54
2:C:871:ARG:HH21	2:C:1140:GLY:HA2	1.71	0.54
2:D:962:TYR:CE2	2:D:982:PRO:HA	2.43	0.54
2:C:957:LEU:HD21	2:C:1002:VAL:HG21	1.89	0.53
1:B:468:LYS:NZ	1:B:470:GLY:O	2.25	0.53
2:C:1068:LYS:HD2	2:C:1073:ALA:HB2	1.91	0.53

Continued on next page...

Continued from previous page...

Atom-1	Atom-2	Interatomic distance (Å)	Clash overlap (Å)
3:J:1403:ARG:HD3	3:J:1406:MET:CE	2.38	0.53
1:A:183:PHE:CZ	1:A:185:TRP:HB2	2.43	0.53
1:B:361:ASP:OD1	1:B:362:GLY:N	2.41	0.53
1:B:485:LEU:HB3	1:B:490:THR:HB	1.91	0.53
1:A:166:VAL:HG12	1:A:175:VAL:HG13	1.89	0.53
1:A:627:ASP:HB3	1:A:630:SER:HB3	1.91	0.53
1:A:79:THR:HG22	1:A:120:ARG:HH21	1.74	0.52
1:A:126:ARG:HD3	1:A:127:PRO:HD2	1.92	0.52
1:A:479:LYS:HZ1	3:I:1413:SER:HB3	1.74	0.52
2:D:816:LEU:HD11	2:D:843:SER:HB3	1.89	0.52
1:A:89:ASP:HB2	1:A:214:PRO:HA	1.92	0.52
2:C:796:ALA:HB3	2:C:798:MET:SD	2.49	0.52
2:D:1179:CYS:HB2	2:D:1208:ASN:HA	1.90	0.52
3:J:1383:ALA:N	3:J:1419:ASP:O	2.35	0.52
1:B:254:ASN:O	1:B:256:THR:N	2.41	0.52
2:D:893:GLY:O	2:D:1013:ARG:HA	2.09	0.52
1:B:271:PHE:HB3	1:B:274:CYS:HB2	1.91	0.52
1:B:450:VAL:HA	1:B:463:LEU:HD23	1.92	0.52
2:D:819:CYS:SG	2:D:856:PRO:HD2	2.49	0.52
2:D:896:VAL:HG22	2:D:1011:PHE:HD1	1.75	0.52
1:A:621:TRP:HB2	1:A:662:LEU:HD11	1.92	0.52
1:A:468:LYS:NZ	1:A:470:GLY:O	2.29	0.52
2:D:941:ASN:OD1	2:D:953:LYS:NZ	2.43	0.52
1:A:82:ASP:HA	1:A:127:PRO:HG3	1.92	0.52
1:B:670:VAL:HG11	1:B:683:TRP:CH2	2.45	0.52
2:D:1068:LYS:HE3	2:D:1073:ALA:HB2	1.90	0.52
3:J:1398:ASP:OD2	3:J:1398:ASP:N	2.42	0.52
2:D:902:HIS:CD2	2:D:1108:ALA:HB1	2.46	0.51
1:A:297:CYS:N	1:A:298:PRO:HD3	2.25	0.51
1:A:690:LYS:HA	1:A:693:GLN:HG3	1.91	0.51
1:B:594:GLN:HE21	2:D:828:SER:HB2	1.75	0.51
1:B:194:GLU:OE2	1:B:311:HIS:NE2	2.43	0.51
2:C:936:ARG:HH21	2:C:958:PHE:HE2	1.57	0.51
2:C:962:TYR:OH	2:C:980:GLY:O	2.28	0.51
1:A:369:THR:O	1:A:369:THR:OG1	2.27	0.51
1:B:479:LYS:NZ	3:J:1413:SER:HB2	2.25	0.51
1:B:205:GLY:HA2	1:B:235:GLN:HG2	1.92	0.51
1:A:123:VAL:HG23	1:A:128:VAL:HG21	1.91	0.51
1:B:621:TRP:HB2	1:B:662:LEU:HD11	1.93	0.51
1:A:86:LYS:HE2	1:A:90:GLY:HA2	1.91	0.51
1:A:607:PRO:HG2	1:A:654:ASN:HB2	1.93	0.51

Continued on next page...

Continued from previous page...

Atom-1	Atom-2	Interatomic distance (Å)	Clash overlap (Å)
1:A:719:ASP:OD2	1:A:722:CYS:N	2.37	0.51
1:B:114:PHE:HE1	1:B:199:TYR:CD2	2.28	0.50
1:B:509:LEU:HD22	1:B:518:LEU:HB3	1.92	0.50
2:C:1172:GLY:HA3	2:C:1197:TYR:CZ	2.45	0.50
2:D:855:CYS:HB2	2:D:882:ARG:HG2	1.94	0.50
3:J:1378:ILE:HG12	3:J:1401:ARG:HA	1.93	0.50
3:J:1380:CYS:SG	3:J:1405:LEU:HD12	2.51	0.50
1:A:556:GLY:N	1:A:565:PHE:O	2.32	0.50
1:A:670:VAL:HG21	1:A:683:TRP:CE2	2.47	0.50
1:B:126:ARG:HD3	1:B:127:PRO:HD2	1.92	0.50
1:B:766:VAL:HG22	1:B:775:SER:HB2	1.93	0.50
1:B:766:VAL:HA	1:B:774:CYS:O	2.12	0.50
2:C:822:LEU:HD22	2:C:882:ARG:NH1	2.27	0.50
3:J:1378:ILE:HG22	3:J:1424:VAL:HA	1.94	0.50
2:C:1222:ASP:OD1	2:C:1224:ASP:N	2.44	0.50
2:D:911:TYR:OH	2:D:1051:PHE:HE2	1.94	0.50
2:D:1133:ALA:O	2:D:1137:HIS:ND1	2.26	0.50
1:A:371:LEU:HD12	1:A:372:ASP:H	1.75	0.50
2:C:904:ILE:HD11	2:C:1105:TYR:HE1	1.77	0.50
2:C:939:THR:HG22	2:C:955:ILE:HG13	1.94	0.50
2:D:805:ASN:OD1	2:D:806:SER:N	2.45	0.50
1:A:422:PRO:HA	1:A:552:PRO:HD3	1.93	0.50
2:C:817:ARG:H	2:C:817:ARG:HD2	1.77	0.50
2:C:816:LEU:HD23	2:C:836:VAL:HG22	1.94	0.50
2:C:991:ILE:HG23	2:C:1195:GLY:HA2	1.94	0.50
2:D:1145:TRP:CD1	2:D:1145:TRP:N	2.77	0.50
1:A:671:HIS:CD2	1:A:729:VAL:HG12	2.47	0.50
1:B:447:CYS:SG	1:B:448:SER:N	2.85	0.50
1:B:479:LYS:HZ3	3:J:1413:SER:HB2	1.77	0.50
1:A:713:ARG:HD2	1:A:755:TYR:CE2	2.47	0.49
1:B:427:VAL:HB	1:B:546:VAL:HG12	1.94	0.49
2:C:902:HIS:CD2	2:C:1108:ALA:HB1	2.47	0.49
2:C:904:ILE:HD11	2:C:910:ARG:HH11	1.77	0.49
2:C:817:ARG:HH12	2:C:839:PRO:HA	1.77	0.49
2:D:807:SER:O	2:D:810:THR:HG23	2.12	0.49
1:B:346:CYS:HA	1:B:349:PRO:HB3	1.93	0.49
2:C:852:GLU:OE1	2:C:852:GLU:N	2.42	0.49
2:C:958:PHE:CD1	2:C:963:GLU:HG2	2.47	0.49
2:C:964:LEU:HD11	2:C:984:TYR:CE2	2.48	0.49
1:A:316:PRO:HG2	1:A:338:CYS:HB2	1.95	0.49
1:A:386:PRO:HA	1:A:396:PRO:HD3	1.94	0.49

Continued on next page...

Continued from previous page...

Atom-1	Atom-2	Interatomic distance (Å)	Clash overlap (Å)
1:B:700:ARG:NH1	1:B:735:PRO:HB3	2.28	0.49
2:D:1172:GLY:HA3	2:D:1197:TYR:CZ	2.48	0.49
1:A:700:ARG:O	1:A:700:ARG:NH1	2.45	0.49
1:B:402:THR:N	1:B:405:SER:O	2.46	0.49
1:B:571:ASP:O	1:B:574:THR:OG1	2.23	0.49
2:C:920:ILE:HD13	2:C:923:GLN:OE1	2.13	0.49
2:C:984:TYR:HA	2:C:996:GLU:O	2.12	0.49
3:I:1400:ASP:OD1	3:I:1400:ASP:N	2.46	0.49
1:A:402:THR:N	1:A:405:SER:O	2.42	0.49
1:A:706:ASP:HB3	1:A:728:PRO:HB3	1.95	0.49
2:C:814:GLU:OE1	2:C:832:VAL:HG22	2.12	0.49
2:D:1058:SER:OG	2:D:1060:SER:OG	2.28	0.49
1:B:166:VAL:HG12	1:B:175:VAL:HG22	1.95	0.49
2:C:871:ARG:NH2	2:C:1138:ASP:O	2.44	0.49
1:B:119:ARG:HG2	1:B:130:THR:OG1	2.13	0.48
1:B:342:CYS:HB2	1:B:351:ARG:HG3	1.95	0.48
2:C:1005:ASP:OD1	2:C:1007:LYS:N	2.35	0.48
3:I:1405:LEU:HD11	3:I:1420:TYR:HB3	1.95	0.48
3:J:1375:LEU:HD11	3:J:1401:ARG:O	2.12	0.48
1:A:270:ALA:HA	1:A:317[B]:ARG:HB2	1.94	0.48
1:B:79:THR:O	1:B:190:SER:HA	2.13	0.48
2:D:798:MET:SD	2:D:835:CYS:HB3	2.53	0.48
2:D:817:ARG:O	2:D:817:ARG:HG2	2.13	0.48
2:D:853:GLU:OE1	2:D:881:ASN:ND2	2.47	0.48
2:D:944:CYS:H	2:D:951:CYS:HB3	1.78	0.48
2:D:964:LEU:HD11	2:D:984:TYR:CE2	2.49	0.48
1:B:344:ASP:OD1	1:B:352:ALA:N	2.38	0.48
2:D:957:LEU:HD21	2:D:1002:VAL:HG21	1.94	0.48
2:C:838:PRO:HG2	2:C:841:LEU:HD13	1.96	0.48
2:C:1215:VAL:HG22	2:C:1216:ALA:H	1.79	0.48
1:A:510:PRO:HA	1:A:518:LEU:O	2.12	0.48
2:C:874:CYS:O	2:C:889:ARG:NH2	2.47	0.48
2:C:1145:TRP:CD1	2:C:1145:TRP:N	2.79	0.48
1:A:632:PHE:HB3	1:A:669:TYR:HE2	1.78	0.48
2:D:817:ARG:NH1	2:D:841:LEU:O	2.45	0.48
2:D:1013:ARG:NH2	2:D:1138:ASP:OD2	2.46	0.48
1:B:99:CYS:HA	1:B:119:ARG:NH1	2.29	0.48
2:D:920:ILE:HD13	2:D:923:GLN:OE1	2.13	0.48
1:B:346:CYS:HB3	1:B:370:VAL:HG21	1.95	0.48
2:C:944:CYS:H	2:C:951:CYS:HB3	1.79	0.48
2:C:989:MET:HB3	2:C:1193:LEU:HD11	1.95	0.48

Continued on next page...

Continued from previous page...

Atom-1	Atom-2	Interatomic distance (Å)	Clash overlap (Å)
1:A:245:PRO:HD3	3:J:1403:ARG:NH1	2.29	0.47
1:B:656:GLU:OE1	1:B:656:GLU:N	2.31	0.47
2:D:991:ILE:HG23	2:D:1195:GLY:HA2	1.97	0.47
2:D:1207:PHE:CZ	2:D:1209:GLU:HG3	2.49	0.47
3:I:1396:GLN:HB2	3:I:1412:GLN:HE22	1.78	0.47
1:A:171:ASP:N	1:A:171:ASP:OD1	2.47	0.47
1:A:687:VAL:HG22	1:A:688:CYS:SG	2.54	0.47
1:B:178:ARG:HD2	1:B:179:LEU:CD2	2.44	0.47
1:B:549:ARG:HB2	1:B:549:ARG:CZ	2.44	0.47
1:B:706:ASP:HA	1:B:728:PRO:HB3	1.96	0.47
1:B:777:THR:O	1:B:780:LYS:HD2	2.15	0.47
2:C:817:ARG:O	2:C:817:ARG:HG2	2.15	0.47
2:D:852:GLU:OE1	2:D:852:GLU:N	2.47	0.47
1:A:237:LEU:HD11	1:B:611:SER:HB2	1.97	0.47
1:A:266:LEU:HD22	1:A:305:TYR:HD2	1.80	0.47
1:A:536:LEU:HD22	1:A:548:VAL:HG22	1.97	0.47
1:B:270:ALA:HA	1:B:317[A]:ARG:HB2	1.96	0.47
1:B:507:THR:HG21	1:B:511:LEU:HD13	1.96	0.47
1:B:517:THR:HG21	1:B:721:THR:HA	1.96	0.47
1:B:752:CYS:SG	1:B:753:PRO:HD2	2.55	0.47
2:C:996:GLU:OE1	2:C:1187:LEU:HB2	2.15	0.47
1:A:211:ASN:ND2	1:A:217:ASN:HD22	2.12	0.47
2:C:806:SER:HB2	2:C:810:THR:HG21	1.96	0.47
1:A:293:ARG:NH1	1:A:297:CYS:SG	2.88	0.47
1:B:220:TYR:CE2	1:B:225:ARG:HB2	2.49	0.47
1:B:401:ASN:HA	1:B:406:SER:HA	1.96	0.47
1:B:446:ASP:OD1	1:B:467:ARG:NH1	2.36	0.47
2:C:1005:ASP:OD2	2:C:1009:SER:N	2.44	0.47
2:C:1040:ARG:HG2	2:C:1055:TRP:CZ3	2.49	0.47
2:D:1043:SER:O	2:D:1043:SER:OG	2.29	0.47
1:B:270:ALA:HA	1:B:317[B]:ARG:HB2	1.97	0.47
1:B:297:CYS:N	1:B:298:PRO:HD3	2.30	0.47
2:C:1004:TRP:HD1	2:C:1010:VAL:HG22	1.78	0.47
1:A:167:GLU:HG3	1:A:169:SER:HB3	1.97	0.46
1:A:414:TRP:HB2	2:C:1041:SER:O	2.15	0.46
1:A:468:LYS:HA	1:A:476:ASN:HD22	1.81	0.46
1:B:607:PRO:HG2	1:B:654:ASN:HB2	1.98	0.46
3:J:1342:SER:OG	3:J:1343:TRP:N	2.48	0.46
1:B:83:PHE:CE2	1:B:127:PRO:HB3	2.49	0.46
1:B:595:ALA:HB2	2:D:821:THR:OG1	2.15	0.46
1:A:157:LEU:HD12	1:A:167:GLU:HA	1.97	0.46

Continued on next page...

Continued from previous page...

Atom-1	Atom-2	Interatomic distance (Å)	Clash overlap (Å)
1:A:219:PHE:O	1:A:225:ARG:HA	2.15	0.46
1:A:76:VAL:O	1:A:88:PHE:HA	2.16	0.46
1:A:564:ASN:ND2	1:A:571:ASP:OD2	2.44	0.46
1:B:76:VAL:O	1:B:88:PHE:HA	2.16	0.46
1:B:510:PRO:HA	1:B:518:LEU:O	2.16	0.46
1:B:700:ARG:HH11	1:B:735:PRO:HB3	1.80	0.46
3:J:1333:CYS:HB3	3:J:1432:CYS:HB2	1.68	0.46
2:C:1058:SER:OG	2:C:1060:SER:OG	2.33	0.46
2:C:1098:SER:OG	2:C:1099:GLN:OE1	2.33	0.46
2:D:1068:LYS:HD3	2:D:1068:LYS:C	2.35	0.46
3:J:1343:TRP:CZ3	3:J:1423:ARG:HD2	2.51	0.46
3:J:1397:VAL:HG21	3:J:1420:TYR:CZ	2.51	0.46
1:A:754:CYS:HB3	1:A:781:LEU:HB2	1.98	0.46
1:B:556:GLY:N	1:B:565:PHE:O	2.40	0.46
2:C:1102:SER:HB3	2:C:1132:TYR:CZ	2.50	0.46
2:D:955:ILE:HG21	2:D:966:LEU:HD22	1.96	0.46
1:A:83:PHE:CE2	1:A:127:PRO:HB3	2.51	0.46
1:A:278:VAL:HB	1:A:305:TYR:HE1	1.81	0.46
1:A:509:LEU:HD22	1:A:518:LEU:HB3	1.98	0.46
2:C:1091:PRO:HA	2:C:1094:ALA:HB2	1.97	0.46
2:D:1220:CYS:HB2	2:D:1250:ILE:HG13	1.98	0.46
1:A:671:HIS:HD2	1:A:729:VAL:HG12	1.80	0.46
1:B:582:ALA:HB2	2:D:860:ASN:ND2	2.31	0.46
3:I:1348:ARG:HG3	3:I:1348:ARG:HH11	1.81	0.46
3:J:1400:ASP:OD1	3:J:1400:ASP:N	2.49	0.46
1:A:270:ALA:HA	1:A:317[A]:ARG:HB2	1.97	0.45
1:B:262:CYS:O	1:B:266:LEU:HB2	2.16	0.45
1:B:636:HIS:CD2	1:B:641:PRO:HG3	2.51	0.45
2:C:800:TYR:HE1	2:C:833:SER:HB3	1.81	0.45
3:J:1395:GLN:OE1	3:J:1420:TYR:OH	2.33	0.45
1:A:582:ALA:HB2	2:C:860:ASN:ND2	2.31	0.45
1:B:539:GLN:O	1:B:544:MET:HA	2.16	0.45
2:C:819:CYS:SG	2:C:856:PRO:HD2	2.56	0.45
2:C:1035:ASN:HB2	2:C:1044:VAL:HG21	1.98	0.45
2:D:1078:LYS:HG2	2:D:1082:GLN:HE21	1.81	0.45
1:B:768:HIS:HE1	1:B:771:GLY:HA2	1.81	0.45
1:A:469:CYS:O	3:I:1411:GLN:HA	2.17	0.45
1:A:577:SER:HG	2:C:884:TRP:HD1	1.64	0.45
1:A:633:SER:HA	1:A:636:HIS:ND1	2.30	0.45
2:C:1230:VAL:HA	2:C:1245:CYS:HB3	1.98	0.45
3:I:1349:PRO:HG3	3:I:1418:HIS:O	2.17	0.45

Continued on next page...

Continued from previous page...

Atom-1	Atom-2	Interatomic distance (Å)	Clash overlap (Å)
1:A:126:ARG:HE	1:A:293:ARG:HH12	1.65	0.45
1:A:341:PRO:HB3	1:A:360:VAL:HG21	1.98	0.45
2:C:937:ILE:HG12	2:C:957:LEU:HD23	1.98	0.45
2:C:962:TYR:CE2	2:C:982:PRO:HA	2.51	0.45
1:B:493:ARG:HH22	1:B:495:GLN:NE2	2.11	0.45
1:B:625:LEU:O	1:B:636:HIS:NE2	2.45	0.45
2:D:817:ARG:HG2	2:D:842:VAL:HA	1.97	0.45
2:D:1158:TYR:HB2	2:D:1166:TRP:CD1	2.52	0.45
1:B:106:HIS:NE2	1:B:202:GLN:OE1	2.40	0.45
1:B:425:CYS:SG	1:B:426:SER:N	2.89	0.45
2:C:853:GLU:OE1	2:C:881:ASN:ND2	2.50	0.45
2:C:1156:ASP:HA	2:C:1159:ASN:HD22	1.82	0.45
2:D:906:PHE:CZ	2:D:1014:LEU:HD12	2.52	0.45
3:I:1348:ARG:HG3	3:I:1348:ARG:NH1	2.32	0.45
1:A:740:LEU:HD12	1:A:740:LEU:O	2.17	0.44
1:B:455:CYS:HB3	1:B:559:CYS:HB2	1.67	0.44
1:B:761:LEU:HD21	1:B:767:VAL:HG11	1.98	0.44
2:D:909:ASP:OD1	2:D:910:ARG:N	2.49	0.44
3:J:1414:PRO:O	3:J:1416:LEU:N	2.43	0.44
1:A:625:LEU:HA	1:A:632:PHE:HD2	1.83	0.44
2:C:921:LEU:N	2:C:937:ILE:O	2.50	0.44
1:B:295:PRO:CD	1:B:296:THR:N	2.80	0.44
1:A:88:PHE:HE2	1:A:203:THR:HG21	1.82	0.44
1:B:266:LEU:HD22	1:B:305:TYR:CD2	2.52	0.44
2:C:1207:PHE:CZ	2:C:1209:GLU:HG3	2.51	0.44
3:J:1343:TRP:CE3	3:J:1423:ARG:HB3	2.53	0.44
1:A:606:ASP:OD2	1:A:608:CYS:HB2	2.18	0.44
2:C:1083:LYS:HE2	2:C:1083:LYS:HB2	1.80	0.44
1:B:216:PHE:CD1	1:B:216:PHE:O	2.71	0.44
2:D:817:ARG:HH12	2:D:839:PRO:HA	1.82	0.44
3:I:1341:SER:HG	3:I:1424:VAL:H	1.66	0.44
1:A:447:CYS:SG	1:A:448:SER:N	2.90	0.44
1:B:83:PHE:CZ	1:B:127:PRO:HB3	2.53	0.44
2:C:796:ALA:HB1	2:C:797:PRO:HD2	1.98	0.44
2:C:891:CYS:H	2:C:1016:GLN:HE21	1.65	0.44
2:D:1102:SER:HB3	2:D:1132:TYR:CZ	2.53	0.44
1:B:604:PHE:N	1:B:605:GLU:OE2	2.48	0.44
2:D:813:ALA:HB3	2:D:832:VAL:HG23	2.00	0.44
3:J:1398:ASP:OD2	3:J:1406:MET:HB2	2.17	0.44
1:B:560:GLY:HA2	1:B:591:TRP:CE2	2.53	0.43
2:C:1137:HIS:HA	2:C:1141:LEU:O	2.18	0.43

Continued on next page...

Continued from previous page...

Atom-1	Atom-2	Interatomic distance (Å)	Clash overlap (Å)
3:J:1340:TRP:CE3	3:J:1423:ARG:HG3	2.53	0.43
1:A:83:PHE:CZ	1:A:127:PRO:HB3	2.53	0.43
1:A:656:GLU:H	1:A:656:GLU:CD	2.15	0.43
1:B:394:TYR:HB3	1:B:398:THR:OG1	2.18	0.43
2:C:893:GLY:O	2:C:1013:ARG:HA	2.19	0.43
2:D:1057:LEU:HD23	2:D:1057:LEU:HA	1.75	0.43
1:A:651:ASP:O	1:A:655:CYS:N	2.48	0.43
1:B:201:ASN:HD22	4:B:803:NAG:C7	2.31	0.43
3:J:1343:TRP:CE3	3:J:1343:TRP:HA	2.53	0.43
1:B:220:TYR:OH	1:B:225:ARG:HD2	2.18	0.43
1:B:633:SER:HA	1:B:636:HIS:CE1	2.54	0.43
2:C:1057:LEU:HD23	2:C:1057:LEU:HA	1.77	0.43
2:D:850:ILE:HG22	2:D:851:ALA:O	2.19	0.43
1:B:318:ASN:N	1:B:318:ASN:OD1	2.51	0.43
2:C:867:GLY:H	2:C:880:ARG:HH21	1.67	0.43
1:B:608:CYS:SG	1:B:649:MET:HG3	2.59	0.43
2:C:798:MET:HB3	2:C:837:CYS:HA	1.99	0.43
1:A:422:PRO:HA	1:A:550:LEU:O	2.18	0.43
1:B:448:SER:HA	1:B:465:GLU:HA	2.00	0.43
1:A:200:ALA:O	1:A:202:GLN:HG3	2.18	0.43
1:B:592:LYS:NZ	1:B:599:ASN:OD1	2.48	0.43
2:C:800:TYR:CE1	2:C:833:SER:HB3	2.53	0.43
1:B:236:LYS:NZ	1:B:238:ASP:OD1	2.36	0.43
2:D:1035:ASN:HB2	2:D:1044:VAL:HG21	2.00	0.43
1:A:106:HIS:HB2	1:A:114:PHE:CE1	2.54	0.43
1:A:341:PRO:HB3	1:A:360:VAL:CG2	2.49	0.43
1:B:263:HIS:O	1:B:267:LEU:HB2	2.18	0.43
2:C:907:ASP:OD1	2:C:1031:ASP:N	2.49	0.43
2:D:907:ASP:OD1	2:D:1031:ASP:N	2.48	0.43
2:D:1243:CYS:HA	2:D:1252:CYS:HB3	2.01	0.43
1:A:77:CYS:SG	1:A:193:LEU:HB2	2.58	0.42
1:A:159:TYR:HB3	1:A:166:VAL:HG22	1.99	0.42
1:A:625:LEU:HD23	1:A:632:PHE:CD2	2.54	0.42
1:B:617:TYR:CE2	1:B:621:TRP:CD1	3.07	0.42
2:C:932:HIS:CD2	2:C:932:HIS:H	2.37	0.42
2:C:956:LYS:HB3	2:C:958:PHE:CE1	2.54	0.42
2:C:1168:TYR:HA	2:C:1196:CYS:HB3	2.00	0.42
1:B:89:ASP:O	1:B:214:PRO:HB3	2.19	0.42
2:C:852:GLU:OE2	2:C:853:GLU:HG2	2.19	0.42
2:D:1180:ARG:O	2:D:1182:PRO:HD3	2.19	0.42
1:A:751:GLU:OE1	1:A:751:GLU:N	2.52	0.42

Continued on next page...

Continued from previous page...

Atom-1	Atom-2	Interatomic distance (Å)	Clash overlap (Å)
1:B:211:ASN:ND2	1:B:217:ASN:HD22	2.18	0.42
1:B:660:ASP:OD1	1:B:691:TYR:OH	2.35	0.42
2:D:987:ARG:HD2	2:D:996:GLU:OE2	2.19	0.42
2:D:1160:PRO:O	2:D:1160:PRO:HD2	2.20	0.42
2:D:1168:TYR:HA	2:D:1196:CYS:HB3	2.00	0.42
3:I:1333:CYS:SG	3:I:1334:VAL:N	2.92	0.42
1:A:344:ASP:OD1	1:A:351:ARG:N	2.52	0.42
1:B:371:LEU:HD12	1:B:372:ASP:H	1.82	0.42
1:B:447:CYS:HB2	1:B:597:CYS:HB3	1.97	0.42
2:D:1230:VAL:HA	2:D:1245:CYS:HB3	1.99	0.42
1:B:651:ASP:O	1:B:655:CYS:N	2.47	0.42
1:B:697:LYS:O	1:B:698:SER:OG	2.35	0.42
2:C:909:ASP:OD1	2:C:910:ARG:N	2.52	0.42
2:C:1004:TRP:CE3	2:C:1006:ARG:HA	2.55	0.42
2:D:1244:ASN:O	2:D:1250:ILE:HA	2.20	0.42
1:A:115:ASN:HB3	1:A:135:LYS:HB3	2.02	0.42
2:C:960:GLU:HB3	2:C:961:SER:H	1.58	0.42
2:C:1180:ARG:O	2:C:1182:PRO:HD3	2.19	0.42
1:B:615:GLU:HA	1:B:615:GLU:OE1	2.20	0.42
2:D:1172:GLY:H	2:D:1193:LEU:H	1.67	0.42
1:A:137:GLN:HB3	2:C:946:THR:HA	2.01	0.42
1:A:424:THR:HA	1:A:548:VAL:O	2.20	0.42
1:B:235:GLN:OE1	1:B:235:GLN:N	2.53	0.42
2:C:891:CYS:O	2:C:1016:GLN:NE2	2.52	0.42
2:D:921:LEU:N	2:D:937:ILE:O	2.53	0.42
2:D:1137:HIS:HA	2:D:1141:LEU:O	2.20	0.42
3:I:1378:ILE:HD12	3:I:1378:ILE:C	2.40	0.42
1:A:189:ASP:OD1	1:A:189:ASP:N	2.53	0.42
3:I:1340:TRP:CZ3	3:I:1425:LEU:HB2	2.55	0.42
3:J:1343:TRP:CZ3	3:J:1423:ARG:HB3	2.55	0.42
1:A:700:ARG:HH21	1:A:735:PRO:HA	1.84	0.41
1:B:167:GLU:HG3	1:B:169:SER:HB3	2.02	0.41
1:B:278:VAL:O	1:B:305:TYR:OH	2.22	0.41
2:D:1083:LYS:HE2	2:D:1083:LYS:HB2	1.87	0.41
3:J:1403:ARG:HD3	3:J:1406:MET:HE1	2.02	0.41
1:A:455:CYS:HB3	1:A:559:CYS:HB2	1.60	0.41
1:A:756:ALA:O	1:A:759:THR:OG1	2.20	0.41
1:B:316:PRO:HG2	1:B:338:CYS:HB2	2.02	0.41
1:A:184:LEU:HD22	1:A:307:ARG:HH12	1.84	0.41
2:C:1049:LEU:HD12	2:C:1049:LEU:HA	1.85	0.41
2:D:816:LEU:HD22	2:D:817:ARG:N	2.36	0.41

Continued on next page...

Continued from previous page...

Atom-1	Atom-2	Interatomic distance (Å)	Clash overlap (Å)
1:A:148:VAL:O	1:A:154:ARG:HD2	2.21	0.41
1:A:254:ASN:O	1:A:256:THR:N	2.53	0.41
2:C:802:ASP:OD2	2:C:804:SER:OG	2.26	0.41
2:D:1154:PHE:CD1	2:D:1157:PHE:HB2	2.55	0.41
1:A:400:PHE:CE1	1:A:407:CYS:HB2	2.56	0.41
1:B:183:PHE:HD1	1:B:193:LEU:CD2	2.34	0.41
1:B:263:HIS:CE1	1:B:284:LEU:HD22	2.55	0.41
1:B:594:GLN:HB2	1:B:597:CYS:SG	2.61	0.41
2:D:817:ARG:H	2:D:817:ARG:HD2	1.86	0.41
2:D:925:TYR:OH	2:D:934:THR:O	2.26	0.41
1:A:549:ARG:CZ	1:A:549:ARG:HB2	2.51	0.41
1:B:689:THR:HA	1:B:692:MET:HG2	2.02	0.41
2:C:1109:CYS:HA	2:C:1128:ALA:HB1	2.02	0.41
1:B:77:CYS:SG	1:B:193:LEU:HB2	2.60	0.41
2:C:911:TYR:OH	2:C:1051:PHE:HE2	2.03	0.41
1:A:334:GLN:HG3	1:A:336:GLN:HG2	2.03	0.41
1:A:353:GLN:HE22	2:C:930:THR:HG23	1.86	0.41
1:A:621:TRP:CB	1:A:662:LEU:HD11	2.49	0.41
1:A:629:ASN:OD1	1:A:629:ASN:C	2.59	0.41
2:D:814:GLU:OE1	2:D:832:VAL:HG22	2.20	0.41
3:J:1365:ARG:HE	3:J:1371:VAL:HB	1.85	0.41
1:A:539:GLN:O	1:A:544:MET:HA	2.21	0.41
1:A:753:PRO:HG2	1:A:755:TYR:CZ	2.55	0.41
1:B:189:ASP:OD1	1:B:190:SER:N	2.54	0.41
1:B:500:VAL:HG21	1:B:509:LEU:HD11	2.01	0.41
1:B:536:LEU:HD22	1:B:548:VAL:HG22	2.02	0.41
1:B:539:GLN:OE1	1:B:545:GLN:NE2	2.53	0.41
1:B:656:GLU:HG3	3:J:1411:GLN:OE1	2.21	0.41
2:C:1199:LYS:HB2	2:C:1199:LYS:HE2	1.75	0.41
2:D:1208:ASN:O	2:D:1212:MET:N	2.53	0.41
1:A:278:VAL:O	1:A:305:TYR:OH	2.28	0.41
1:A:595:ALA:HB2	2:C:821:THR:OG1	2.21	0.41
1:B:174:LYS:HE3	1:B:182:THR:HG23	2.03	0.41
2:C:1020:GLY:N	2:C:1029:PHE:O	2.54	0.41
2:D:838:PRO:HG2	2:D:841:LEU:HD13	2.03	0.41
2:D:852:GLU:OE2	2:D:853:GLU:HG2	2.21	0.41
1:A:166:VAL:HG12	1:A:175:VAL:HG22	2.03	0.40
1:B:80:TRP:CE3	1:B:304:GLU:HG2	2.56	0.40
2:D:1146:ARG:NH1	2:D:1151:CYS:HB3	2.36	0.40
1:A:289:GLN:O	1:A:292:CYS:HB2	2.22	0.40
1:A:560:GLY:HA2	1:A:591:TRP:CE2	2.57	0.40

Continued on next page...

Continued from previous page...

Atom-1	Atom-2	Interatomic distance (Å)	Clash overlap (Å)
1:B:324:LEU:HD23	1:B:324:LEU:HA	1.91	0.40
1:B:581:GLU:HG3	1:B:587:PHE:HA	2.03	0.40
1:A:141:LEU:HD11	1:A:166:VAL:HG11	2.02	0.40
1:A:327:ARG:HB2	1:A:335:HIS:CD2	2.56	0.40
1:A:752:CYS:O	1:A:763:PRO:HG3	2.21	0.40
1:B:118:LEU:HD23	1:B:129:VAL:HG11	2.03	0.40
1:B:422:PRO:HA	1:B:550:LEU:O	2.20	0.40
2:D:874:CYS:O	2:D:889:ARG:NH2	2.54	0.40
2:D:900:ASP:O	2:D:914:GLU:HG3	2.21	0.40
1:A:88:PHE:CE1	1:A:195:LEU:HD23	2.57	0.40
1:B:341:PRO:HG3	1:B:357:ASP:HB3	2.02	0.40
1:B:524:PHE:CD2	1:B:731:GLY:HA2	2.56	0.40
1:B:751:GLU:N	1:B:751:GLU:OE1	2.54	0.40
2:C:822:LEU:HD12	2:C:842:VAL:HG11	2.04	0.40
2:C:958:PHE:CE1	2:C:963:GLU:HG2	2.57	0.40
2:D:1171:CYS:HB3	2:D:1192:GLY:HA3	2.03	0.40
1:A:216:PHE:CD2	1:A:216:PHE:O	2.74	0.40
1:A:245:PRO:HD3	3:J:1403:ARG:HH22	1.86	0.40
1:A:700:ARG:HD2	1:A:701:TYR:O	2.22	0.40
2:D:904:ILE:HA	2:D:909:ASP:O	2.22	0.40
2:D:1040:ARG:HG2	2:D:1055:TRP:CZ3	2.56	0.40
2:D:1049:LEU:HA	2:D:1049:LEU:HD12	1.83	0.40

There are no symmetry-related clashes.

5.3 Torsion angles [i](#)

5.3.1 Protein backbone [i](#)

In the following table, the Percentiles column shows the percent Ramachandran outliers of the chain as a percentile score with respect to all PDB entries followed by that with respect to all EM entries.

The Analysed column shows the number of residues for which the backbone conformation was analysed, and the total number of residues.

Mol	Chain	Analysed	Favoured	Allowed	Outliers	Percentiles	
1	A	715/760 (94%)	663 (93%)	52 (7%)	0	100	100
1	B	715/760 (94%)	668 (93%)	47 (7%)	0	100	100
2	C	449/460 (98%)	405 (90%)	44 (10%)	0	100	100

Continued on next page...

Continued from previous page...

Mol	Chain	Analysed	Favoured	Allowed	Outliers	Percentiles	
2	D	449/460 (98%)	404 (90%)	45 (10%)	0	100	100
3	I	98/100 (98%)	96 (98%)	2 (2%)	0	100	100
3	J	98/100 (98%)	94 (96%)	4 (4%)	0	100	100
All	All	2524/2640 (96%)	2330 (92%)	194 (8%)	0	100	100

There are no Ramachandran outliers to report.

5.3.2 Protein sidechains ⓘ

In the following table, the Percentiles column shows the percent sidechain outliers of the chain as a percentile score with respect to all PDB entries followed by that with respect to all EM entries.

The Analysed column shows the number of residues for which the sidechain conformation was analysed, and the total number of residues.

Mol	Chain	Analysed	Rotameric	Outliers	Percentiles	
1	A	598/635 (94%)	566 (95%)	32 (5%)	18	50
1	B	598/635 (94%)	561 (94%)	37 (6%)	15	45
2	C	376/382 (98%)	349 (93%)	27 (7%)	12	39
2	D	376/382 (98%)	354 (94%)	22 (6%)	16	47
3	I	86/88 (98%)	79 (92%)	7 (8%)	9	34
3	J	86/88 (98%)	81 (94%)	5 (6%)	17	48
All	All	2120/2210 (96%)	1990 (94%)	130 (6%)	18	46

All (130) residues with a non-rotameric sidechain are listed below:

Mol	Chain	Res	Type
1	A	86	LYS
1	A	89	ASP
1	A	99	CYS
1	A	116	VAL
1	A	126	ARG
1	A	131	ARG
1	A	139	LEU
1	A	145	ASN
1	A	167	GLU
1	A	171	ASP

Continued on next page...

Continued from previous page...

Mol	Chain	Res	Type
1	A	179	LEU
1	A	186	ASN
1	A	210	PHE
1	A	216	PHE
1	A	219	PHE
1	A	226	LEU
1	A	255	CYS
1	A	293	ARG
1	A	294	CYS
1	A	324	LEU
1	A	345	THR
1	A	361	ASP
1	A	479	LYS
1	A	511	LEU
1	A	571	ASP
1	A	604	PHE
1	A	611	SER
1	A	700	ARG
1	A	711	THR
1	A	741	ASN
1	A	752	CYS
1	A	768	HIS
1	B	87	THR
1	B	89	ASP
1	B	99	CYS
1	B	116	VAL
1	B	120	ARG
1	B	122	LEU
1	B	125	SER
1	B	145	ASN
1	B	171	ASP
1	B	172	TYR
1	B	186	ASN
1	B	210	PHE
1	B	216	PHE
1	B	219	PHE
1	B	318	ASN
1	B	340	SER
1	B	388	THR
1	B	418	ASP
1	B	426	SER
1	B	442	ASP

Continued on next page...

Continued from previous page...

Mol	Chain	Res	Type
1	B	472	THR
1	B	479	LYS
1	B	571	ASP
1	B	583	THR
1	B	603	SER
1	B	604	PHE
1	B	611	SER
1	B	697	LYS
1	B	709	GLN
1	B	711	THR
1	B	719	ASP
1	B	720	VAL
1	B	742	ASP
1	B	768	HIS
1	B	773	VAL
1	B	780	LYS
1	B	781	LEU
2	C	794	CYS
2	C	798	MET
2	C	817	ARG
2	C	820	HIS
2	C	855	CYS
2	C	871	ARG
2	C	905	THR
2	C	932	HIS
2	C	940	GLU
2	C	1000	MET
2	C	1003	SER
2	C	1019	LYS
2	C	1021	ARG
2	C	1031	ASP
2	C	1035	ASN
2	C	1036	ASP
2	C	1042	ARG
2	C	1061	CYS
2	C	1083	LYS
2	C	1145	TRP
2	C	1156	ASP
2	C	1158	TYR
2	C	1164	CYS
2	C	1165	GLU
2	C	1179	CYS

Continued on next page...

Continued from previous page...

Mol	Chain	Res	Type
2	C	1196	CYS
2	C	1220	CYS
2	D	798	MET
2	D	816	LEU
2	D	817	ARG
2	D	820	HIS
2	D	932	HIS
2	D	940	GLU
2	D	976	ARG
2	D	987	ARG
2	D	998	HIS
2	D	1000	MET
2	D	1003	SER
2	D	1019	LYS
2	D	1031	ASP
2	D	1042	ARG
2	D	1061	CYS
2	D	1077	ARG
2	D	1083	LYS
2	D	1145	TRP
2	D	1179	CYS
2	D	1210	ASP
2	D	1220	CYS
2	D	1222	ASP
3	I	1363	ASN
3	I	1375	LEU
3	I	1399	CYS
3	I	1401	ARG
3	I	1406	MET
3	I	1421	GLU
3	I	1422	LEU
3	J	1336	GLU
3	J	1343	TRP
3	J	1388	MET
3	J	1406	MET
3	J	1422	LEU

Sometimes sidechains can be flipped to improve hydrogen bonding and reduce clashes. All (22) such sidechains are listed below:

Mol	Chain	Res	Type
1	A	168	GLN
1	A	217	ASN

Continued on next page...

Continued from previous page...

Mol	Chain	Res	Type
1	A	332	ASN
1	A	476	ASN
1	A	545	GLN
1	A	569	GLN
1	A	654	ASN
1	A	694	ASN
1	B	217	ASN
1	B	476	ASN
1	B	495	GLN
1	B	545	GLN
1	B	569	GLN
1	B	594	GLN
1	B	616	ASN
1	B	654	ASN
2	C	881	ASN
2	C	998	HIS
2	D	881	ASN
2	D	929	ASN
3	I	1418	HIS
3	J	1363	ASN

5.3.3 RNA [i](#)

There are no RNA molecules in this entry.

5.4 Non-standard residues in protein, DNA, RNA chains [i](#)

There are no non-standard protein/DNA/RNA residues in this entry.

5.5 Carbohydrates [i](#)

There are no oligosaccharides in this entry.

5.6 Ligand geometry [i](#)

Of 17 ligands modelled in this entry, 8 are monoatomic - leaving 9 for Mogul analysis.

In the following table, the Counts columns list the number of bonds (or angles) for which Mogul statistics could be retrieved, the number of bonds (or angles) that are observed in the model and the number of bonds (or angles) that are defined in the Chemical Component Dictionary. The Link column lists molecule types, if any, to which the group is linked. The Z score for a bond

length (or angle) is the number of standard deviations the observed value is removed from the expected value. A bond length (or angle) with $|Z| > 2$ is considered an outlier worth inspection. RMSZ is the root-mean-square of all Z scores of the bond lengths (or angles).

Mol	Type	Chain	Res	Link	Bond lengths			Bond angles		
					Counts	RMSZ	# Z > 2	Counts	RMSZ	# Z > 2
4	NAG	A	802	1	14,14,15	0.31	0	17,19,21	0.55	0
4	NAG	A	801	1	14,14,15	0.23	0	17,19,21	0.50	0
4	NAG	B	804	1	14,14,15	0.39	0	17,19,21	0.61	0
4	NAG	B	803	1	14,14,15	0.35	0	17,19,21	0.59	0
4	NAG	A	804	1	14,14,15	0.38	0	17,19,21	0.61	0
4	NAG	B	802	1	14,14,15	0.21	0	17,19,21	0.53	0
4	NAG	B	801	1	14,14,15	0.23	0	17,19,21	0.55	0
4	NAG	A	803	1	14,14,15	0.30	0	17,19,21	0.49	0
4	NAG	C	1301	2	14,14,15	0.32	0	17,19,21	0.43	0

In the following table, the Chirals column lists the number of chiral outliers, the number of chiral centers analysed, the number of these observed in the model and the number defined in the Chemical Component Dictionary. Similar counts are reported in the Torsion and Rings columns. '-' means no outliers of that kind were identified.

Mol	Type	Chain	Res	Link	Chirals	Torsions	Rings
4	NAG	A	802	1	-	2/6/23/26	0/1/1/1
4	NAG	A	801	1	-	2/6/23/26	0/1/1/1
4	NAG	B	804	1	-	4/6/23/26	0/1/1/1
4	NAG	B	803	1	-	2/6/23/26	0/1/1/1
4	NAG	A	804	1	-	2/6/23/26	0/1/1/1
4	NAG	B	802	1	-	2/6/23/26	0/1/1/1
4	NAG	B	801	1	-	2/6/23/26	0/1/1/1
4	NAG	A	803	1	-	2/6/23/26	0/1/1/1
4	NAG	C	1301	2	-	0/6/23/26	0/1/1/1

There are no bond length outliers.

There are no bond angle outliers.

There are no chirality outliers.

All (18) torsion outliers are listed below:

Mol	Chain	Res	Type	Atoms
4	B	803	NAG	C4-C5-C6-O6
4	A	803	NAG	C4-C5-C6-O6
4	B	803	NAG	O5-C5-C6-O6

Continued on next page...

Continued from previous page...

Mol	Chain	Res	Type	Atoms
4	A	803	NAG	O5-C5-C6-O6
4	A	801	NAG	C8-C7-N2-C2
4	A	801	NAG	O7-C7-N2-C2
4	B	801	NAG	C8-C7-N2-C2
4	B	801	NAG	O7-C7-N2-C2
4	B	804	NAG	C4-C5-C6-O6
4	A	802	NAG	C1-C2-N2-C7
4	B	802	NAG	C1-C2-N2-C7
4	B	804	NAG	C1-C2-N2-C7
4	A	802	NAG	C3-C2-N2-C7
4	A	804	NAG	C3-C2-N2-C7
4	B	804	NAG	O5-C5-C6-O6
4	A	804	NAG	C1-C2-N2-C7
4	B	802	NAG	C3-C2-N2-C7
4	B	804	NAG	C3-C2-N2-C7

There are no ring outliers.

1 monomer is involved in 1 short contact:

Mol	Chain	Res	Type	Clashes	Symm-Clashes
4	B	803	NAG	1	0

5.7 Other polymers [i](#)

There are no such residues in this entry.

5.8 Polymer linkage issues [i](#)

There are no chain breaks in this entry.

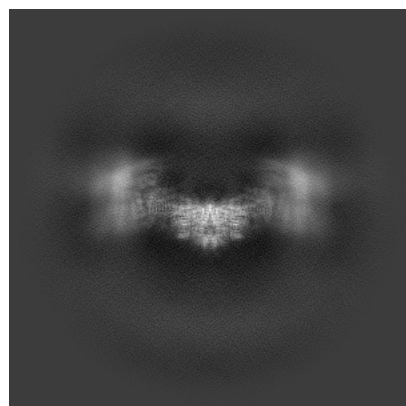
6 Map visualisation [i](#)

This section contains visualisations of the EMDB entry EMD-16808. These allow visual inspection of the internal detail of the map and identification of artifacts.

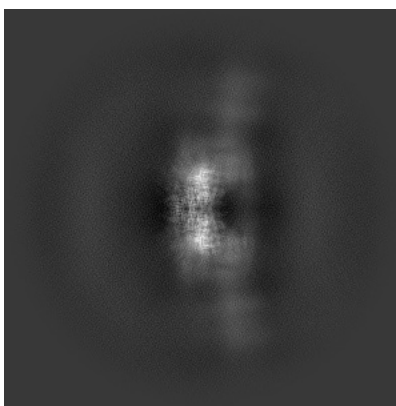
Images derived from a raw map, generated by summing the deposited half-maps, are presented below the corresponding image components of the primary map to allow further visual inspection and comparison with those of the primary map.

6.1 Orthogonal projections [i](#)

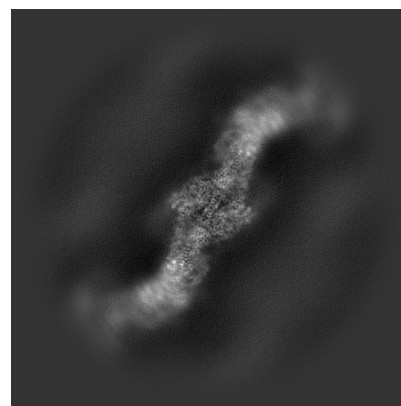
6.1.1 Primary map



X

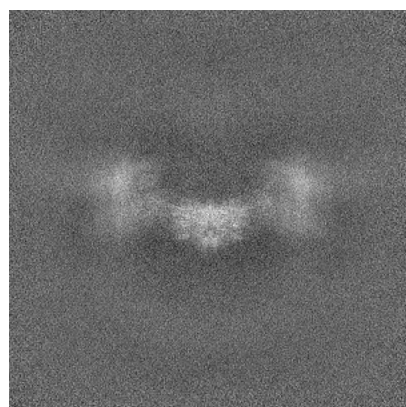


Y

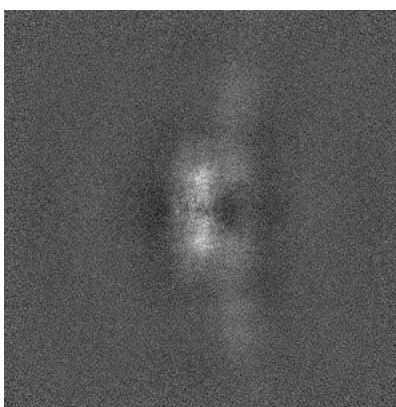


Z

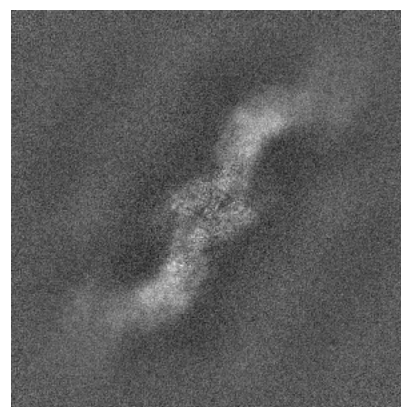
6.1.2 Raw map



X



Y

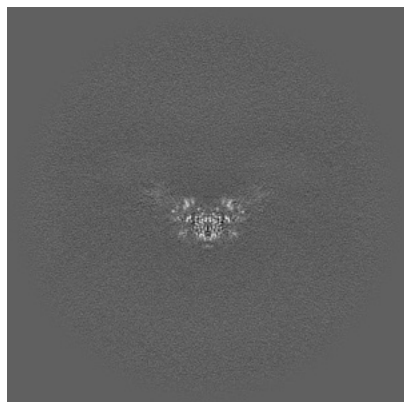


Z

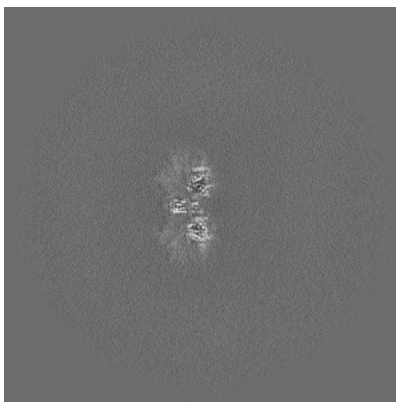
The images above show the map projected in three orthogonal directions.

6.2 Central slices [i](#)

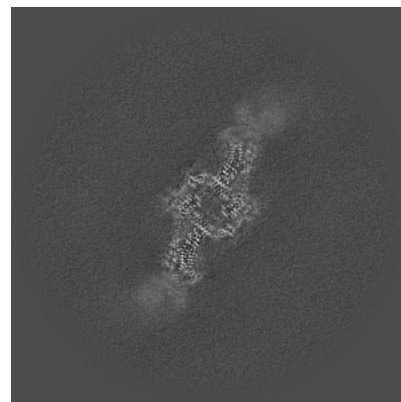
6.2.1 Primary map



X Index: 350

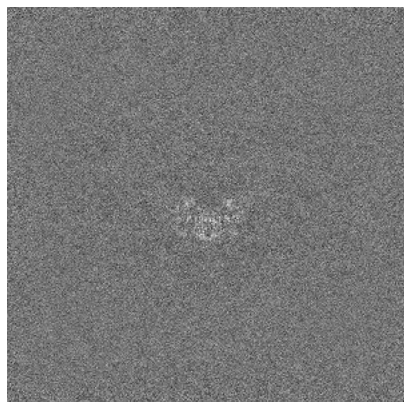


Y Index: 350

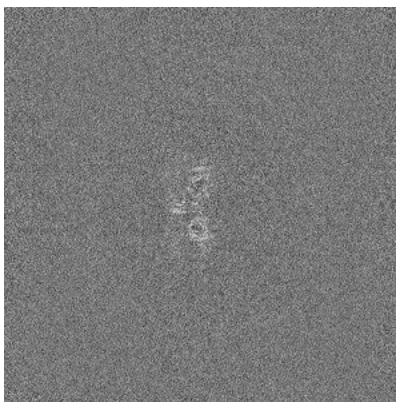


Z Index: 350

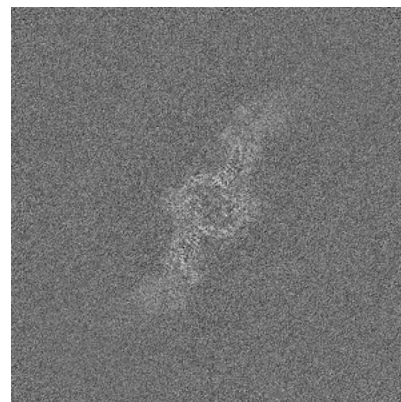
6.2.2 Raw map



X Index: 350



Y Index: 350

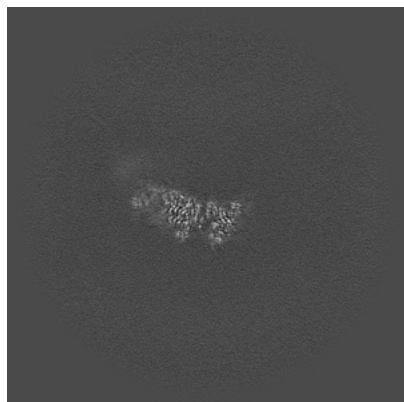


Z Index: 350

The images above show central slices of the map in three orthogonal directions.

6.3 Largest variance slices [i](#)

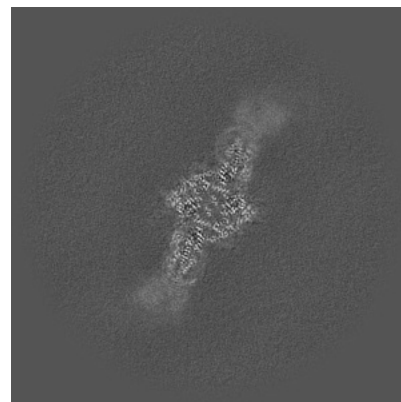
6.3.1 Primary map



X Index: 328

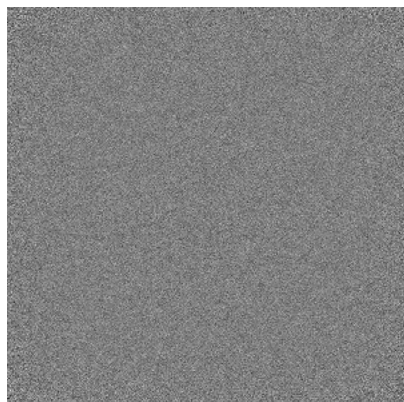


Y Index: 353

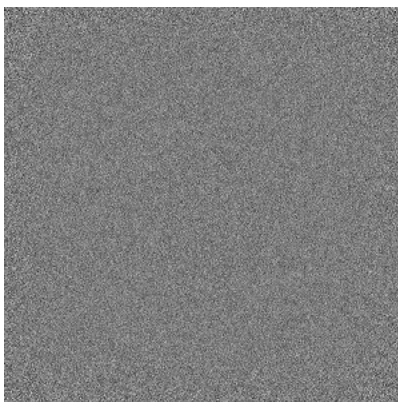


Z Index: 343

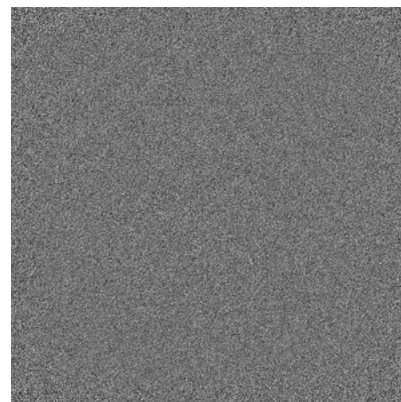
6.3.2 Raw map



X Index: 0



Y Index: 0

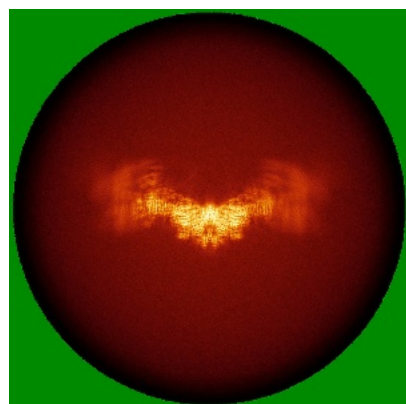


Z Index: 0

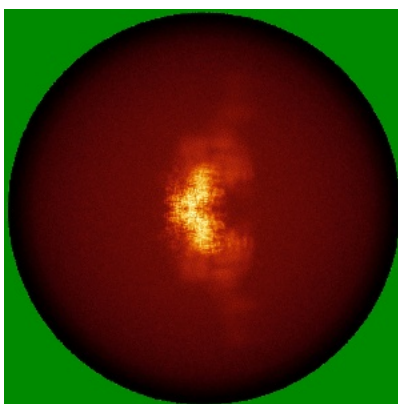
The images above show the largest variance slices of the map in three orthogonal directions.

6.4 Orthogonal standard-deviation projections (False-color) [i](#)

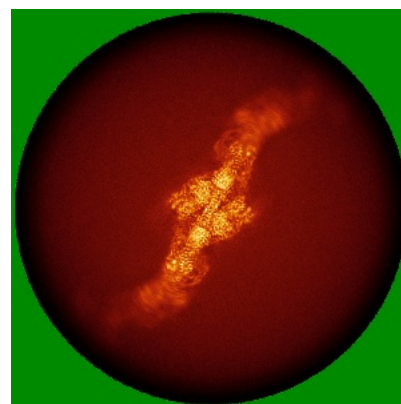
6.4.1 Primary map



X

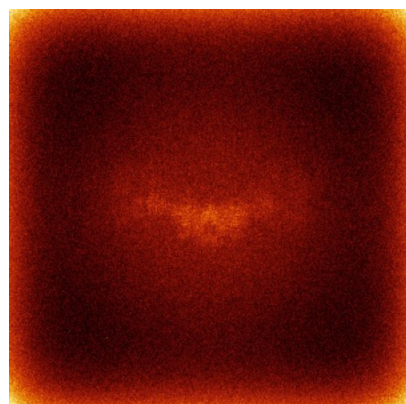


Y

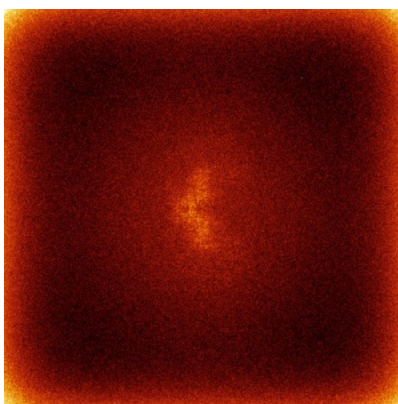


Z

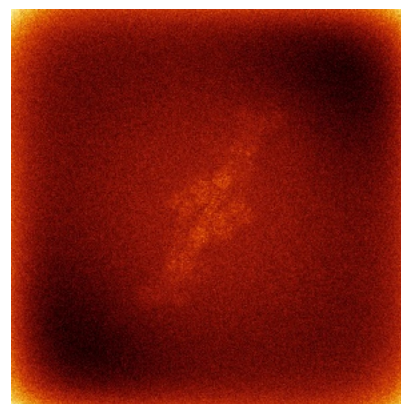
6.4.2 Raw map



X



Y

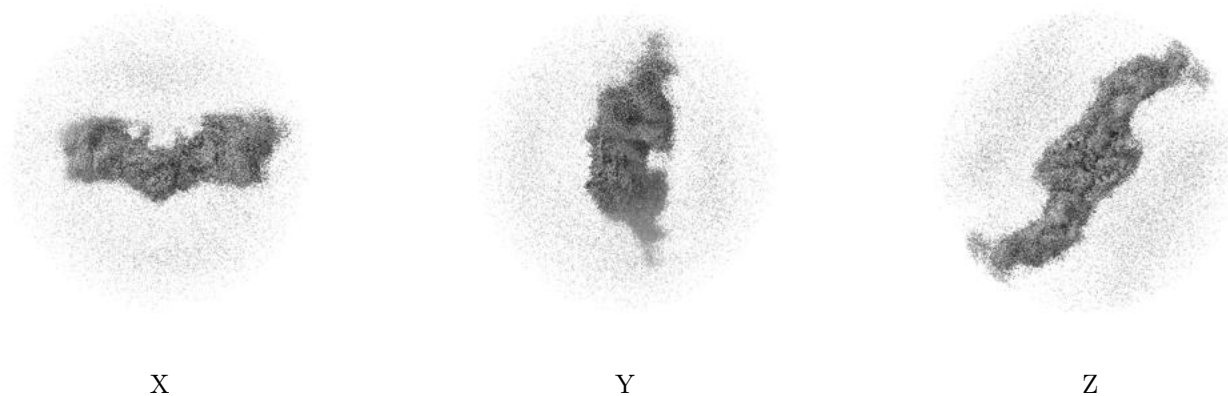


Z

The images above show the map standard deviation projections with false color in three orthogonal directions. Minimum values are shown in green, max in blue, and dark to light orange shades represent small to large values respectively.

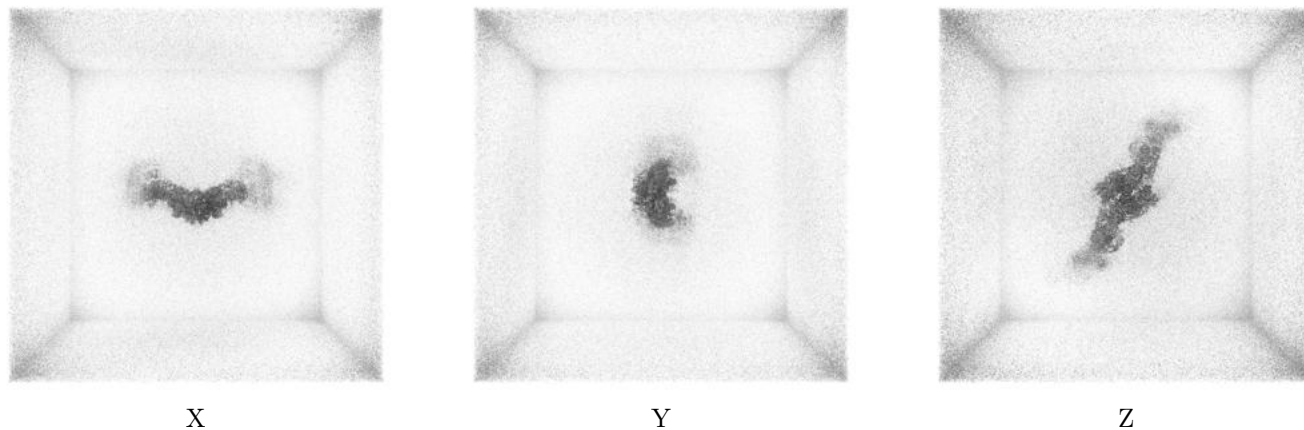
6.5 Orthogonal surface views [i](#)

6.5.1 Primary map



The images above show the 3D surface view of the map at the recommended contour level 0.056. These images, in conjunction with the slice images, may facilitate assessment of whether an appropriate contour level has been provided.

6.5.2 Raw map



These images show the 3D surface of the raw map. The raw map's contour level was selected so that its surface encloses the same volume as the primary map does at its recommended contour level.

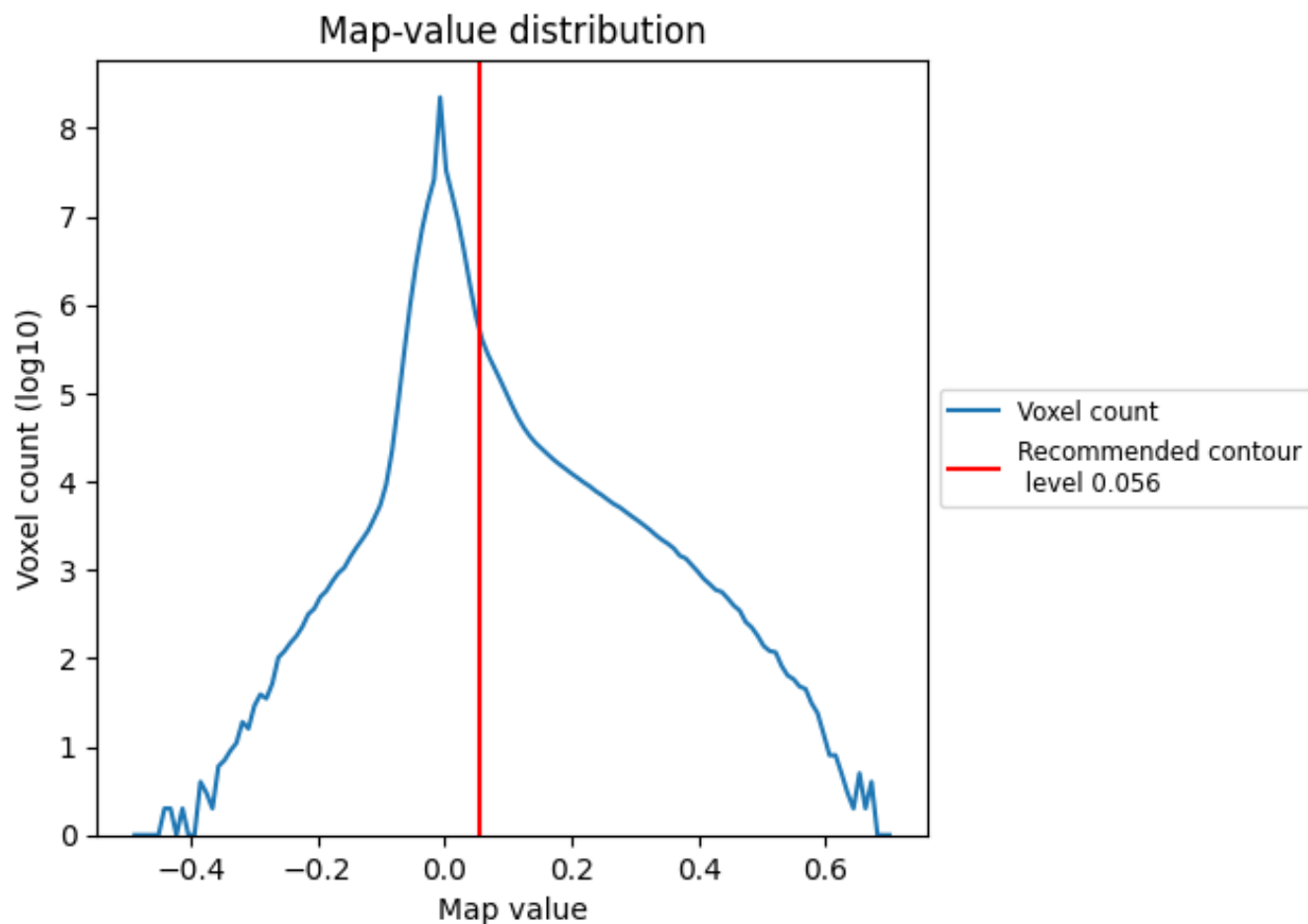
6.6 Mask visualisation [i](#)

This section was not generated. No masks/segmentation were deposited.

7 Map analysis [i](#)

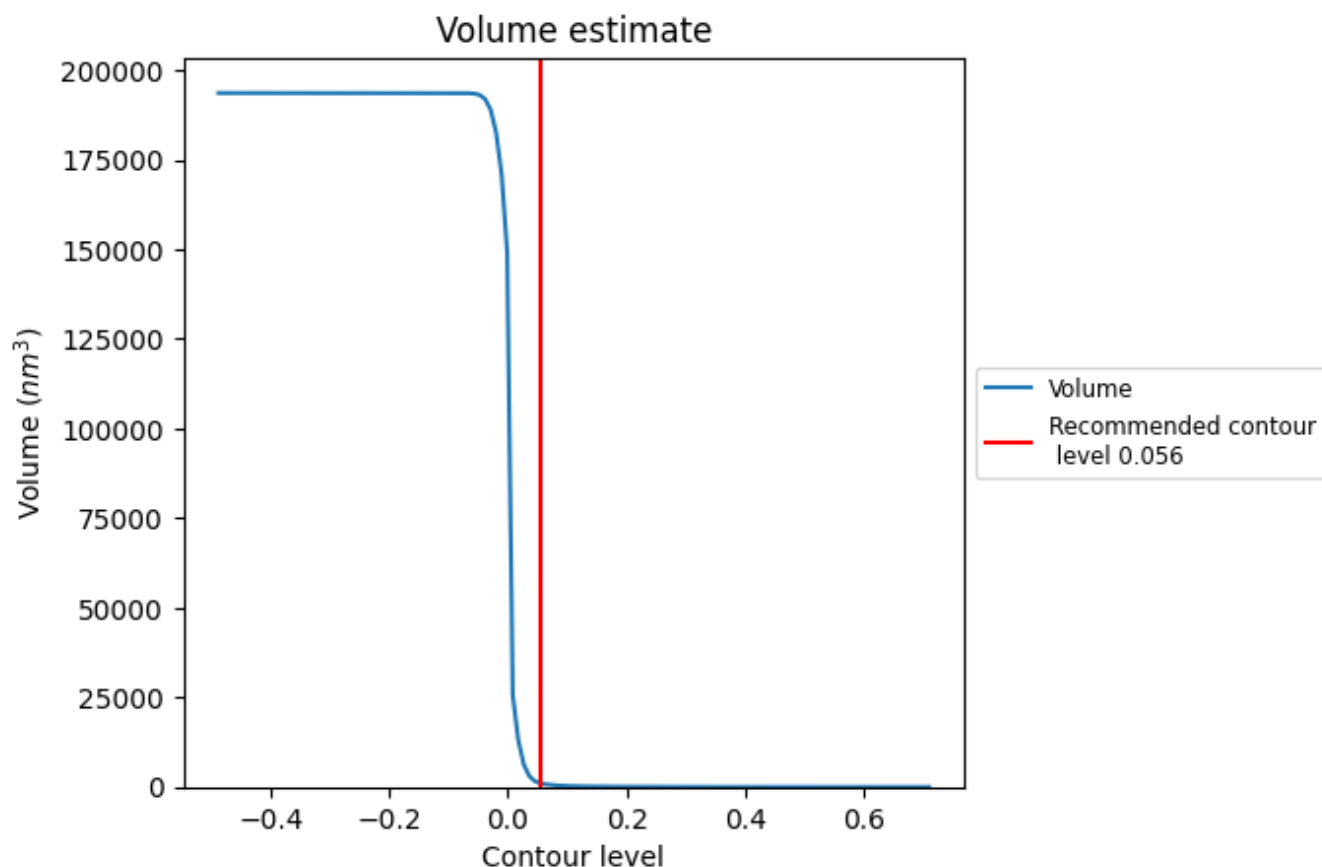
This section contains the results of statistical analysis of the map.

7.1 Map-value distribution [i](#)



The map-value distribution is plotted in 128 intervals along the x-axis. The y-axis is logarithmic. A spike in this graph at zero usually indicates that the volume has been masked.

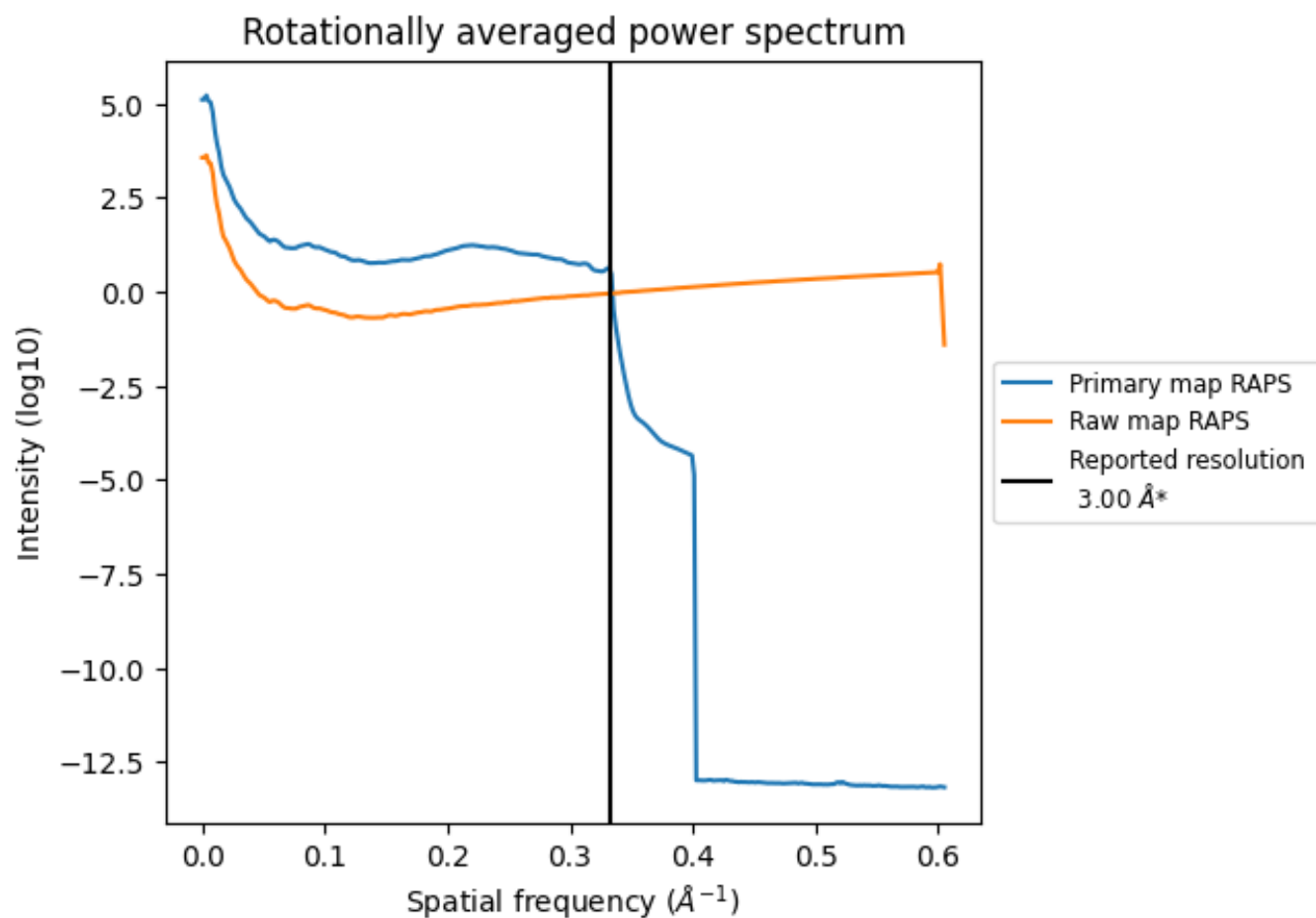
7.2 Volume estimate [i](#)



The volume at the recommended contour level is 988 nm³; this corresponds to an approximate mass of 892 kDa.

The volume estimate graph shows how the enclosed volume varies with the contour level. The recommended contour level is shown as a vertical line and the intersection between the line and the curve gives the volume of the enclosed surface at the given level.

7.3 Rotationally averaged power spectrum ⓘ

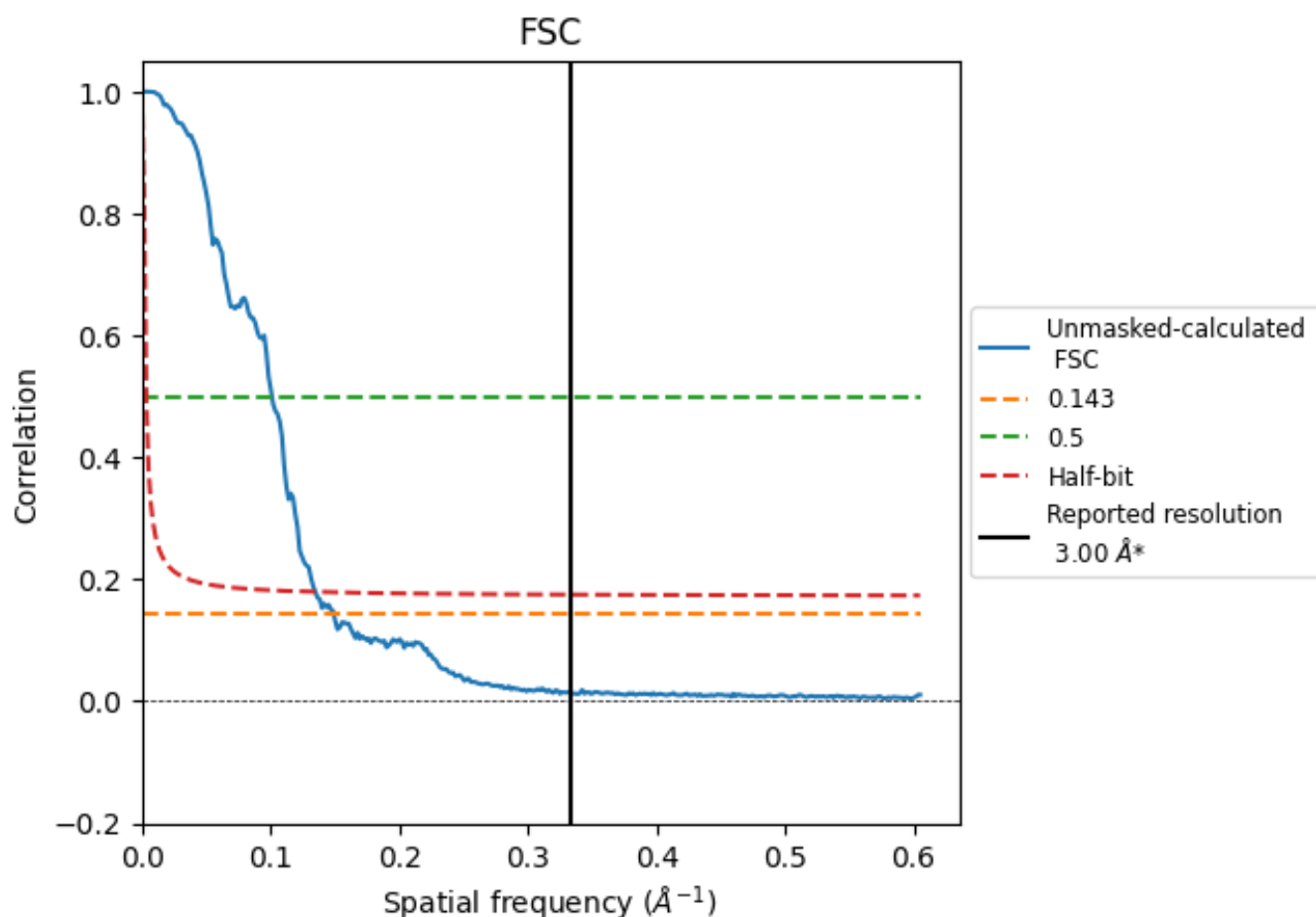


*Reported resolution corresponds to spatial frequency of 0.333 \AA^{-1}

8 Fourier-Shell correlation [i](#)

Fourier-Shell Correlation (FSC) is the most commonly used method to estimate the resolution of single-particle and subtomogram-averaged maps. The shape of the curve depends on the imposed symmetry, mask and whether or not the two 3D reconstructions used were processed from a common reference. The reported resolution is shown as a black line. A curve is displayed for the half-bit criterion in addition to lines showing the 0.143 gold standard cut-off and 0.5 cut-off.

8.1 FSC [i](#)



*Reported resolution corresponds to spatial frequency of 0.333 Å⁻¹

8.2 Resolution estimates [i](#)

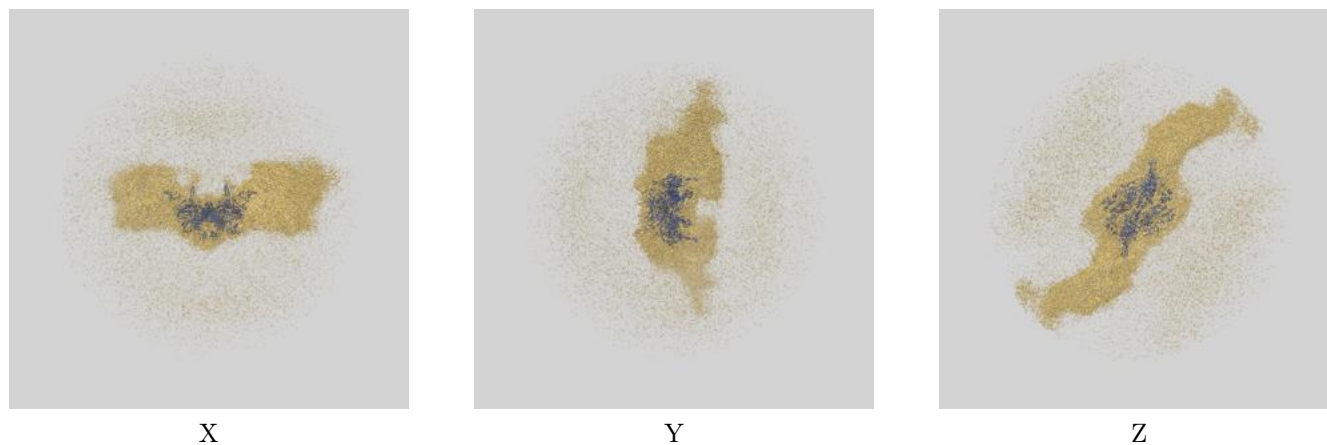
Resolution estimate (Å)	Estimation criterion (FSC cut-off)		
	0.143	0.5	Half-bit
Reported by author	3.00	-	-
Author-provided FSC curve	-	-	-
Unmasked-calculated*	6.71	9.90	7.41

*Resolution estimate based on FSC curve calculated by comparison of deposited half-maps. The value from deposited half-maps intersecting FSC 0.143 CUT-OFF 6.71 differs from the reported value 3.0 by more than 10 %

9 Map-model fit [i](#)

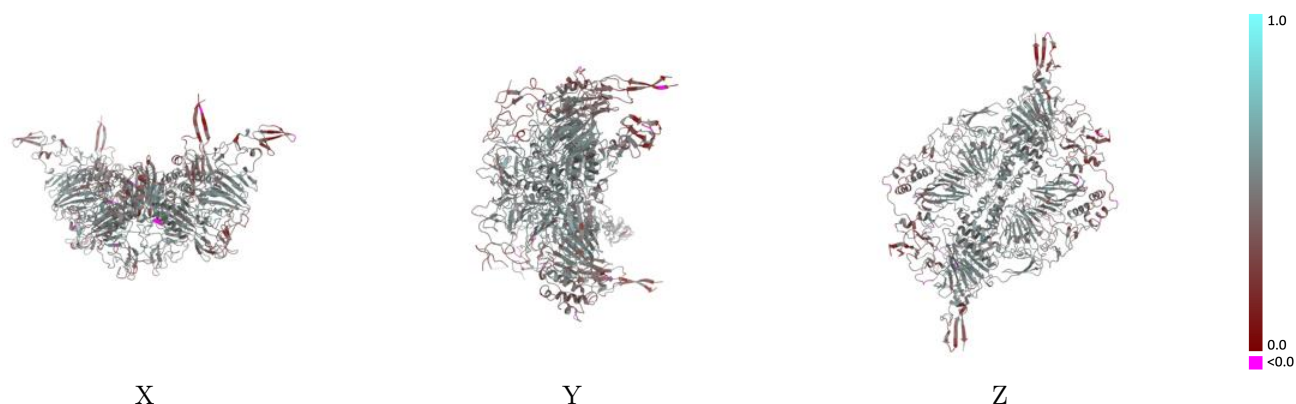
This section contains information regarding the fit between EMDB map EMD-16808 and PDB model 8OER. Per-residue inclusion information can be found in [section 3](#) on [page 6](#).

9.1 Map-model overlay [i](#)



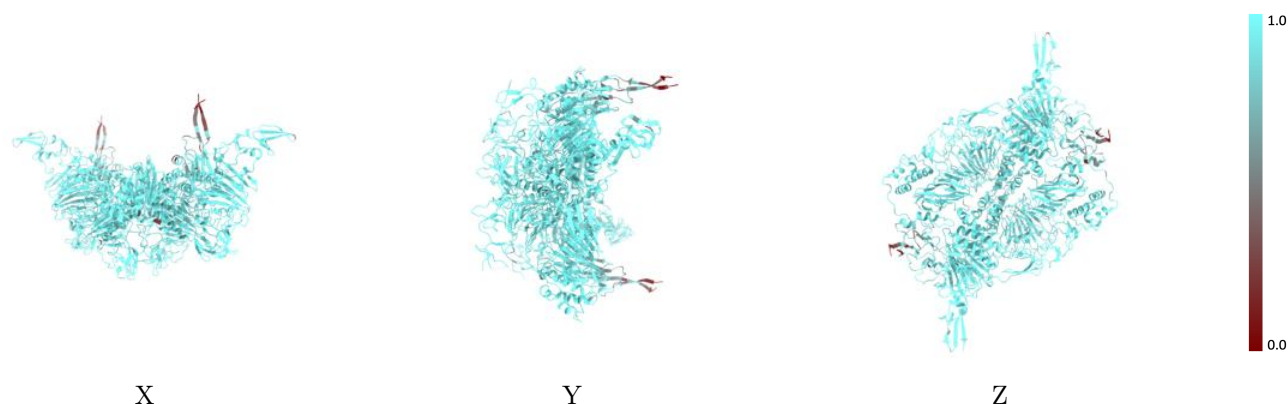
The images above show the 3D surface view of the map at the recommended contour level 0.056 at 50% transparency in yellow overlaid with a ribbon representation of the model coloured in blue. These images allow for the visual assessment of the quality of fit between the atomic model and the map.

9.2 Q-score mapped to coordinate model [i](#)



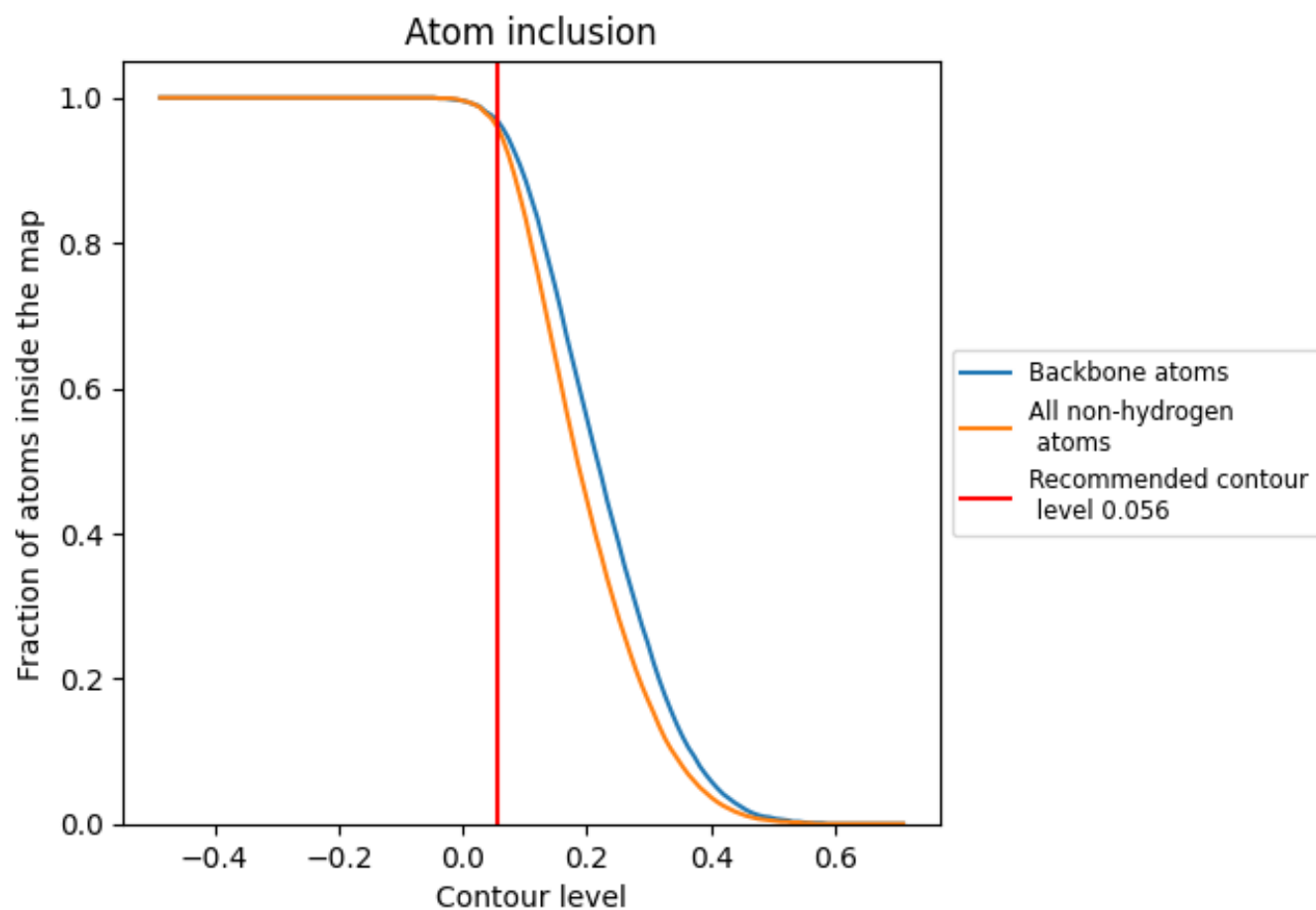
The images above show the model with each residue coloured according to its Q-score. This shows their resolvability in the map with higher Q-score values reflecting better resolvability. Please note: Q-score is calculating the resolvability of atoms, and thus high values are only expected at resolutions at which atoms can be resolved. Low Q-score values may therefore be expected for many entries.

9.3 Atom inclusion mapped to coordinate model [i](#)



The images above show the model with each residue coloured according to its atom inclusion. This shows to what extent they are inside the map at the recommended contour level (0.056).

9.4 Atom inclusion [i](#)



At the recommended contour level, 97% of all backbone atoms, 96% of all non-hydrogen atoms, are inside the map.

9.5 Map-model fit summary ⓘ

The table lists the average atom inclusion at the recommended contour level (0.056) and Q-score for the entire model and for each chain.

Chain	Atom inclusion	Q-score
All	<div><div></div></div> 0.9590	<div><div></div></div> 0.4640
A	<div><div></div></div> 0.9780	<div><div></div></div> 0.4700
B	<div><div></div></div> 0.9810	<div><div></div></div> 0.4740
C	<div><div></div></div> 0.9750	<div><div></div></div> 0.4730
D	<div><div></div></div> 0.9730	<div><div></div></div> 0.4720
I	<div><div></div></div> 0.7350	<div><div></div></div> 0.3610
J	<div><div></div></div> 0.7620	<div><div></div></div> 0.3840

1.0

0.0

<0.0