



wwPDB EM Validation Summary Report ⓘ

Nov 4, 2024 – 03:58 pm GMT

PDB ID : 5OCU
EMDB ID : EMD-3780
Title : Molecular basis of human kinesin-8 function and inhibition
Authors : Locke, J.; Joseph, A.P.; Topf, M.; Moores, C.A.
Deposited on : 2017-07-03
Resolution : 5.20 Å(reported)

This is a wwPDB EM Validation Summary Report for a publicly released PDB entry.

We welcome your comments at validation@mail.wwpdb.org

A user guide is available at

<https://www.wwpdb.org/validation/2017/EMValidationReportHelp>

with specific help available everywhere you see the ⓘ symbol.

The types of validation reports are described at

<http://www.wwpdb.org/validation/2017/FAQs#types>.

The following versions of software and data (see [references ⓘ](#)) were used in the production of this report:

EMDB validation analysis : 0.0.1.dev113
Mogul : 1.8.4, CSD as541be (2020)
MolProbity : 4.02b-467
buster-report : 1.1.7 (2018)
Percentile statistics : 20231227.v01 (using entries in the PDB archive December 27th 2023)
MapQ : 1.9.13
Ideal geometry (proteins) : Engh & Huber (2001)
Ideal geometry (DNA, RNA) : Parkinson et al. (1996)
Validation Pipeline (wwPDB-VP) : 2.39

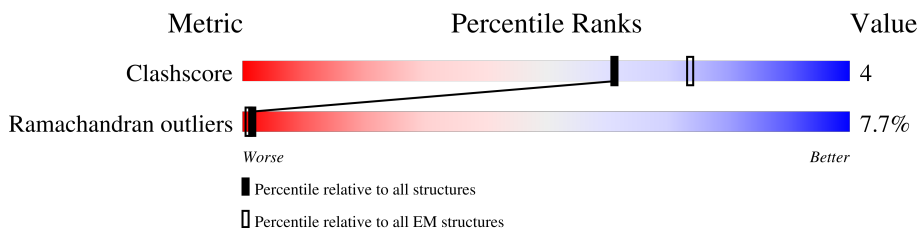
1 Overall quality at a glance

The following experimental techniques were used to determine the structure:

ELECTRON MICROSCOPY




The reported resolution of this entry is 5.20 Å.

Percentile scores (ranging between 0-100) for global validation metrics of the entry are shown in the following graphic. The table shows the number of entries on which the scores are based.



Metric	Whole archive (#Entries)	EM structures (#Entries)
Clashscore	210492	15764
Ramachandran outliers	207382	16835

The table below summarises the geometric issues observed across the polymeric chains and their fit to the map. The red, orange, yellow and green segments of the bar indicate the fraction of residues that contain outliers for ≥ 3 , 2, 1 and 0 types of geometric quality criteria respectively. A grey segment represents the fraction of residues that are not modelled. The numeric value for each fraction is indicated below the corresponding segment, with a dot representing fractions $\leq 5\%$. The upper red bar (where present) indicates the fraction of residues that have poor fit to the EM map (all-atom inclusion $< 40\%$). The numeric value is given above the bar.

Mol	Chain	Length	Quality of chain
1	K	377	 80% 7% • 12%
2	A	451	 79% 11% • 9%
3	B	445	 84% 11% •

2 Entry composition

There are 9 unique types of molecules in this entry. The entry contains 4840 atoms, of which 0 are hydrogens and 0 are deuteriums.

In the tables below, the AltConf column contains the number of residues with at least one atom in alternate conformation and the Trace column contains the number of residues modelled with at most 2 atoms.

- Molecule 1 is a protein called Kinesin-like protein KIF18A.

Mol	Chain	Residues	Atoms				AltConf	Trace
1	K	333	Total	C	N	O	0	0
			1332	666	333	333		

There are 3 discrepancies between the modelled and reference sequences:

Chain	Residue	Modelled	Actual	Comment	Reference
K	-2	GLY	-	expression tag	UNP Q8NI77
K	-1	SER	-	expression tag	UNP Q8NI77
K	0	HIS	-	expression tag	UNP Q8NI77

- Molecule 2 is a protein called Tubulin alpha chain.

Mol	Chain	Residues	Atoms				AltConf	Trace
2	A	412	Total	C	N	O	0	0
			1648	824	412	412		

There are 3 discrepancies between the modelled and reference sequences:

Chain	Residue	Modelled	Actual	Comment	Reference
A	136	SER	LEU	conflict	UNP F2Z4C1
A	265	GLY	ILE	conflict	UNP F2Z4C1
A	358	GLU	GLN	conflict	UNP F2Z4C1

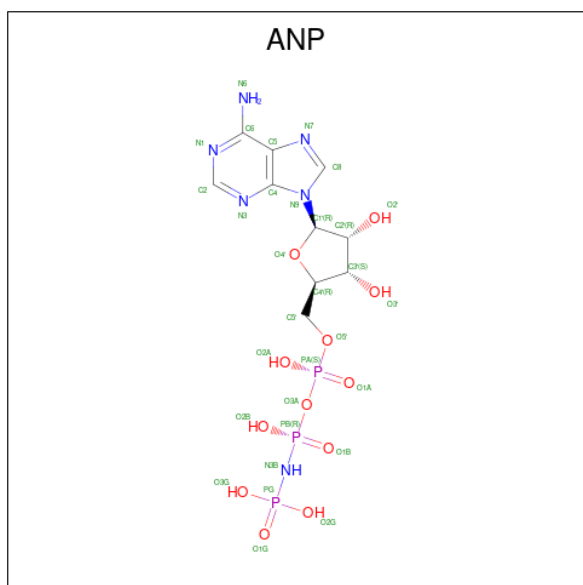
- Molecule 3 is a protein called Tubulin beta chain.

Mol	Chain	Residues	Atoms				AltConf	Trace
3	B	426	Total	C	N	O	0	0
			1704	852	426	426		

- Molecule 4 is MAGNESIUM ION (three-letter code: MG) (formula: Mg).

Mol	Chain	Residues	Atoms		AltConf
4	K	1	Total	Mg	0
			1	1	
4	A	1	Total	Mg	0
			1	1	

- Molecule 5 is PHOSPHOAMINOPHOSPHONIC ACID-ADENYLATE ESTER (three-letter code: ANP) (formula: $C_{10}H_{17}N_6O_{12}P_3$).

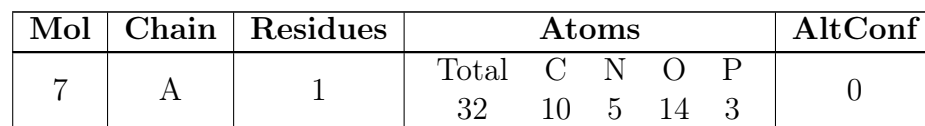


Mol	Chain	Residues	Atoms					AltConf
5	K	1	Total	C	N	O	P	0
			31	10	6	12	3	

- Molecule 6 is ZINC ION (three-letter code: ZN) (formula: Zn).

Mol	Chain	Residues	Atoms		AltConf
6	A	1	Total	Zn	0
			1	1	

- Molecule 7 is GUANOSINE-5'-TRIPHOSPHATE (three-letter code: GTP) (formula: $C_{10}H_{16}N_5O_{14}P_3$).



-
- The image displays the chemical structure of GDP (Guanosine Diphosphate). It consists of a guanine base (a purine derivative) linked to a ribose sugar, which is in turn linked to two phosphate groups. The guanine base is shown with its characteristic fused ring system, including the amino group at the 2-position. The ribose sugar is a five-membered ring with hydroxyl groups at the 2' and 3' positions. The two phosphate groups are connected by a pyrophosphate linkage, with the second phosphate group being a diphosphate (P₂O₇) moiety. The structure is labeled with various atoms and bonds, including the nitrogenous base (N1, N2, N3, N7, N9), the ribose sugar (C1(R), C2(R), C3(S), C4(R), C5), and the phosphate groups (O1A, O1B, O2A, O2B, O3A, O3B, O4A, O4B, O5A, O5B, O6A, O6B, O7A, O7B, O8A, O8B, O9A, O9B, O10A, O10B, O11A, O11B, O12A, O12B, O13A, O13B, O14A, O14B, O15A, O15B, O16A, O16B, O17A, O17B, O18A, O18B, O19A, O19B, O20A, O20B, O21A, O21B, O22A, O22B, O23A, O23B, O24A, O24B, O25A, O25B, O26A, O26B, O27A, O27B, O28A, O28B, O29A, O29B, O30A, O30B, O31A, O31B, O32A, O32B, O33A, O33B, O34A, O34B, O35A, O35B, O36A, O36B, O37A, O37B, O38A, O38B, O39A, O39B, O40A, O40B, O41A, O41B, O42A, O42B, O43A, O43B, O44A, O44B, O45A, O45B, O46A, O46B, O47A, O47B, O48A, O48B, O49A, O49B, O50A, O50B, O51A, O51B, O52A, O52B, O53A, O53B, O54A, O54B, O55A, O55B, O56A, O56B, O57A, O57B, O58A, O58B, O59A, O59B, O60A, O60B, O61A, O61B, O62A, O62B, O63A, O63B, O64A, O64B, O65A, O65B, O66A, O66B, O67A, O67B, O68A, O68B, O69A, O69B, O70A, O70B, O71A, O71B, O72A, O72B, O73A, O73B, O74A, O74B, O75A, O75B, O76A, O76B, O77A, O77B, O78A, O78B, O79A, O79B, O80A, O80B, O81A, O81B, O82A, O82B, O83A, O83B, O84A, O84B, O85A, O85B, O86A, O86B, O87A, O87B, O88A, O88B, O89A, O89B, O90A, O90B, O91A, O91B, O92A, O92B, O93A, O93B, O94A, O94B, O95A, O95B, O96A, O96B, O97A, O97B, O98A, O98B, O99A, O99B, O100A, O100B, O101A, O101B, O102A, O102B, O103A, O103B, O104A, O104B, O105A, O105B, O106A, O106B, O107A, O107B, O108A, O108B, O109A, O109B, O110A, O110B, O111A, O111B, O112A, O112B, O113A, O113B, O114A, O114B, O115A, O115B, O116A, O116B, O117A, O117B, O118A, O118B, O119A, O119B, O120A, O120B, O121A, O121B, O122A, O122B, O123A, O123B, O124A, O124B, O125A, O125B, O126A, O126B, O127A, O127B, O128A, O128B, O129A, O129B, O130A, O130B, O131A, O131B, O132A, O132B, O133A, O133B, O134A, O134B, O135A, O135B, O136A, O136B, O137A, O137B, O138A, O138B, O139A, O139B, O140A, O140B, O141A, O141B, O142A, O142B, O143A, O143B, O144A, O144B, O145A, O145B, O146A, O146B, O147A, O147B, O148A, O148B, O149A, O149B, O150A, O150B, O151A, O151B, O152A, O152B, O153A, O153B, O154A, O154B, O155A, O155B, O156A, O156B, O157A, O157B, O158A, O158B, O159A, O159B, O160A, O160B, O161A, O161B, O162A, O162B, O163A, O163B, O164A, O164B, O165A, O165B, O166A, O166B, O167A, O167B, O168A, O168B, O169A, O169B, O170A, O170B, O171A, O171B, O172A, O172B, O173A, O173B, O174A, O174B, O175A, O175B, O176A, O176B, O177A, O177B, O178A, O178B, O179A, O179B, O180A, O180B, O181A, O181B, O182A, O182B, O183A, O183B, O184A, O184B, O185A, O185B, O186A, O186B, O187A, O187B, O188A, O188B, O189A, O189B, O190A, O190B, O191A, O191B, O192A, O192B, O193A, O193B, O194A, O194B, O195A, O195B, O196A, O196B, O197A, O197B, O198A, O198B, O199A, O199B, O200A, O200B, O201A, O201B, O202A, O202B, O203A, O203B, O204A, O204B, O205A, O205B, O206A, O206B, O207A, O207B, O208A, O208B, O209A, O209B, O210A, O210B, O211A, O211B, O212A, O212B, O213A, O213B, O214A, O214B, O215A, O215B, O216A, O216B, O217A, O217B, O218A, O218B, O219A, O219B, O220A, O220B, O221A, O221B, O222A, O222B, O223A, O223B, O224A, O224B, O225A, O225B, O226A, O226B, O227A, O227B, O228A, O228B, O229A, O229B, O230A, O230B, O231A, O231B, O232A, O232B, O233A, O233B, O234A, O234B, O235A, O235B, O236A, O236B, O237A, O237B, O238A, O238B, O239A, O239B, O240A, O240B, O241A, O241B, O242A, O242B, O243A, O243B, O244A, O244B, O245A, O245B, O246A, O246B, O247A, O247B, O248A, O248B, O249A, O249B, O250A, O250B, O251A, O251B, O252A, O252B, O253A, O253B, O254A, O254B, O255A, O255B, O256A, O256B, O257A, O257B, O258A, O258B, O259A, O259B, O260A, O260B, O261A, O261B, O262A, O262B, O263A, O263B, O264A, O264B, O265A, O265B, O266A, O266B, O267A, O267B, O268A, O268B, O269A, O269B, O270A, O270B, O271A, O271B, O272A, O272B, O273A, O273B, O274A, O274B, O275A, O275B, O276A, O276B, O277A, O277B, O278A, O278B, O279A, O279B, O280A, O280B, O281A, O281B, O282A, O282B, O283A, O283B, O284A, O284B, O285A, O285B, O286A, O286B, O287A, O287B, O288A, O288B, O289A, O289B, O290A, O290B, O291A, O291B, O292A, O292B, O293A, O293B, O294A, O294B, O295A, O295B, O296A, O296B, O297A, O297B, O298A, O298B, O299A, O299B, O300A, O300B, O301A, O301B, O302A, O302B, O303A, O303B, O304A, O304B, O305A, O305B, O306A, O306B, O307A, O307B, O308A, O308B, O309A, O309B, O310A, O310B, O311A, O311B, O312A, O312B, O313A, O313B, O314A, O314B, O315A, O315B, O316A, O316B, O317A, O317B, O318A, O318B, O319A, O319B, O320A, O320B, O321A, O321B, O322A, O322B, O323A, O323B, O324A, O324B, O325A, O325B, O326A, O326B, O327A, O327B, O328A, O328B, O329A, O329B, O330A, O330B, O331A, O331B, O332A, O332B, O333A, O333B, O334A, O334B, O335A, O335B, O336A, O336B, O337A, O337B, O338A, O338B, O339A, O339B, O340A, O340B

Mol	Chain	Residues	Atoms					AltConf
8	B	1	Total	C	N	O	P	0
			28	10	5	11	2	

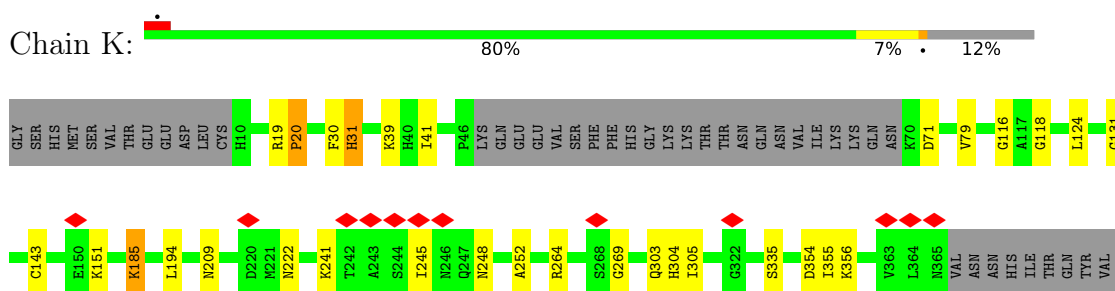
- 



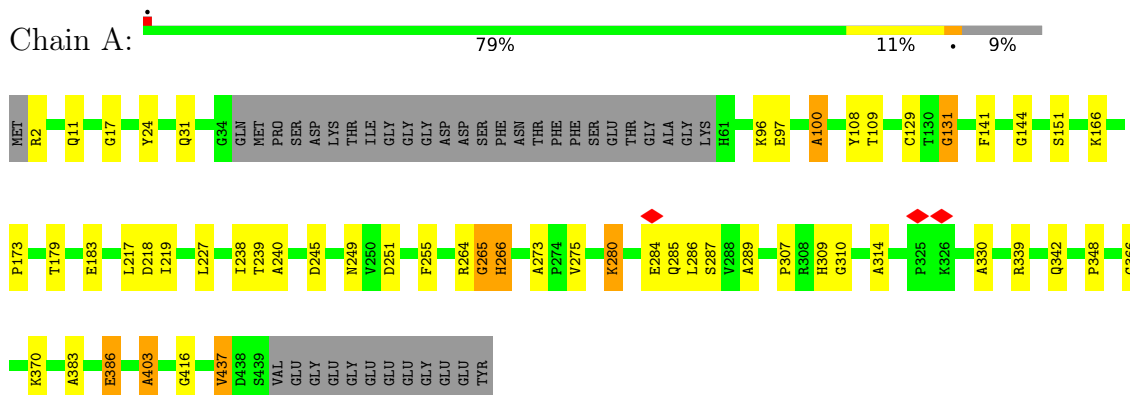
3 Residue-property plots [i](#)

These plots are drawn for all protein, RNA, DNA and oligosaccharide chains in the entry. The first graphic for a chain summarises the proportions of the various outlier classes displayed in the second graphic. The second graphic shows the sequence view annotated by issues in geometry and atom inclusion in map density. Residues are color-coded according to the number of geometric quality criteria for which they contain at least one outlier: green = 0, yellow = 1, orange = 2 and red = 3 or more. A red diamond above a residue indicates a poor fit to the EM map for this residue (all-atom inclusion < 40%). Stretches of 2 or more consecutive residues without any outlier are shown as a green connector. Residues present in the sample, but not in the model, are shown in grey.

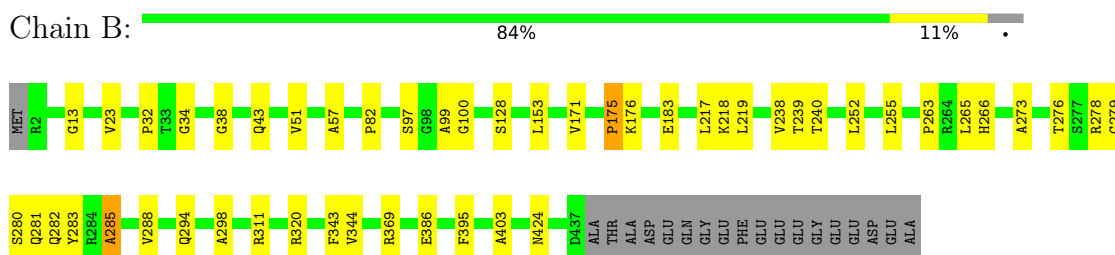
- Molecule 1: Kinesin-like protein KIF18A



- Molecule 2: Tubulin alpha chain



- Molecule 3: Tubulin beta chain



4 Experimental information

Property	Value	Source
EM reconstruction method	HELICAL	Depositor
Imposed symmetry	HELICAL, twist=0°, rise=81 Å, axial sym=C1	Depositor
Number of segments used	70473	Depositor
Resolution determination method	FSC 0.143 CUT-OFF	Depositor
CTF correction method	PHASE FLIPPING AND AMPLITUDE CORRECTION	Depositor
Microscope	FEI POLARA 300	Depositor
Voltage (kV)	300	Depositor
Electron dose ($e^-/\text{\AA}^2$)	5	Depositor
Minimum defocus (nm)	500	Depositor
Maximum defocus (nm)	3500	Depositor
Magnification	Not provided	
Image detector	GATAN K2 SUMMIT (4k x 4k)	Depositor
Maximum map value	0.196	Depositor
Minimum map value	-0.031	Depositor
Average map value	0.019	Depositor
Map value standard deviation	0.035	Depositor
Recommended contour level	0.05	Depositor
Map size (Å)	182.09, 75.06, 95.909996	wwPDB
Map dimensions	131, 54, 69	wwPDB
Map angles (°)	90.0, 90.0, 90.0	wwPDB
Pixel spacing (Å)	1.39, 1.39, 1.39	Depositor

5 Model quality

5.1 Standard geometry

Bond lengths and bond angles in the following residue types are not validated in this section: GTP, ANP, ZN, TA1, MG, GDP

The Z score for a bond length (or angle) is the number of standard deviations the observed value is removed from the expected value. A bond length (or angle) with $|Z| > 5$ is considered an outlier worth inspection. RMSZ is the root-mean-square of all Z scores of the bond lengths (or angles).

Mol	Chain	Bond lengths		Bond angles	
		RMSZ	$\# Z > 5$	RMSZ	$\# Z > 5$
1	K	0.44	0/1330	0.86	0/1659
2	A	0.45	0/1646	0.90	1/2054 (0.0%)
3	B	0.47	0/1703	0.92	0/2127
All	All	0.45	0/4679	0.90	1/5840 (0.0%)

Chiral center outliers are detected by calculating the chiral volume of a chiral center and verifying if the center is modelled as a planar moiety or with the opposite hand. A planarity outlier is detected by checking planarity of atoms in a peptide group, atoms in a mainchain group or atoms of a sidechain that are expected to be planar.

Mol	Chain	#Chirality outliers	#Planarity outliers
1	K	0	16
2	A	0	11
3	B	0	7
All	All	0	34

There are no bond length outliers.

All (1) bond angle outliers are listed below:

Mol	Chain	Res	Type	Atoms	Z	Observed($^{\circ}$)	Ideal($^{\circ}$)
2	A	265	GLY	C-N-CA	5.63	135.77	121.70

There are no chirality outliers.

5 of 34 planarity outliers are listed below:

Mol	Chain	Res	Type	Group
1	K	143	CYS	Mainchain
1	K	151	LYS	Mainchain
1	K	185	LYS	Mainchain

Continued on next page...

Continued from previous page...

Mol	Chain	Res	Type	Group
1	K	194	LEU	Mainchain
1	K	41	ILE	Mainchain

5.2 Too-close contacts

In the following table, the Non-H and H(model) columns list the number of non-hydrogen atoms and hydrogen atoms in the chain respectively. The H(added) column lists the number of hydrogen atoms added and optimized by MolProbity. The Clashes column lists the number of clashes within the asymmetric unit, whereas Symm-Clashes lists symmetry-related clashes.

Mol	Chain	Non-H	H(model)	H(added)	Clashes	Symm-Clashes
1	K	1332	0	358	13	0
2	A	1648	0	451	8	0
3	B	1704	0	471	3	0
4	A	1	0	0	0	0
4	K	1	0	0	0	0
5	K	31	0	13	4	0
6	A	1	0	0	0	0
7	A	32	0	12	3	0
8	B	28	0	12	0	0
9	B	62	0	51	3	0
All	All	4840	0	1368	26	0

The all-atom clashscore is defined as the number of clashes found per 1000 atoms (including hydrogen atoms). The all-atom clashscore for this structure is 4.

The worst 5 of 26 close contacts within the same asymmetric unit are listed below, sorted by their clash magnitude.

Atom-1	Atom-2	Interatomic distance (Å)	Clash overlap (Å)
1:K:30:PHE:O	1:K:31:HIS:C	2.27	0.69
1:K:116:GLY:HA2	5:K:501:ANP:H5'1	1.75	0.69
1:K:30:PHE:O	1:K:31:HIS:O	2.12	0.67
9:B:601:TA1:H261	9:B:601:TA1:H463	1.80	0.62
1:K:19:ARG:O	1:K:20:PRO:C	2.44	0.55

There are no symmetry-related clashes.

5.3 Torsion angles [i](#)

5.3.1 Protein backbone [i](#)

In the following table, the Percentiles column shows the percent Ramachandran outliers of the chain as a percentile score with respect to all PDB entries followed by that with respect to all EM entries.

The Analysed column shows the number of residues for which the backbone conformation was analysed, and the total number of residues.

Mol	Chain	Analysed	Favoured	Allowed	Outliers	Percentiles	
1	K	329/377 (87%)	298 (91%)	25 (8%)	6 (2%)	7	33
2	A	408/451 (90%)	296 (72%)	69 (17%)	43 (10%)	0	6
3	B	424/445 (95%)	305 (72%)	79 (19%)	40 (9%)	0	8
All	All	1161/1273 (91%)	899 (77%)	173 (15%)	89 (8%)	1	10

5 of 89 Ramachandran outliers are listed below:

Mol	Chain	Res	Type
1	K	71	ASP
2	A	97	GLU
2	A	108	TYR
2	A	109	THR
2	A	141	PHE

5.3.2 Protein sidechains [i](#)

There are no protein residues with a non-rotameric sidechain to report in this entry.

5.3.3 RNA [i](#)

There are no RNA molecules in this entry.

5.4 Non-standard residues in protein, DNA, RNA chains [i](#)

There are no non-standard protein/DNA/RNA residues in this entry.

5.5 Carbohydrates [i](#)

There are no oligosaccharides in this entry.

5.6 Ligand geometry

Of 7 ligands modelled in this entry, 3 are monoatomic - leaving 4 for Mogul analysis.

In the following table, the Counts columns list the number of bonds (or angles) for which Mogul statistics could be retrieved, the number of bonds (or angles) that are observed in the model and the number of bonds (or angles) that are defined in the Chemical Component Dictionary. The Link column lists molecule types, if any, to which the group is linked. The Z score for a bond length (or angle) is the number of standard deviations the observed value is removed from the expected value. A bond length (or angle) with $|Z| > 2$ is considered an outlier worth inspection. RMSZ is the root-mean-square of all Z scores of the bond lengths (or angles).

Mol	Type	Chain	Res	Link	Bond lengths			Bond angles		
					Counts	RMSZ	# Z > 2	Counts	RMSZ	# Z > 2
5	ANP	K	501	4	29,33,33	1.69	6 (20%)	31,52,52	2.70	8 (25%)
8	GDP	B	600	-	24,30,30	2.60	9 (37%)	30,47,47	2.93	8 (26%)
7	GTP	A	503	4	26,34,34	1.34	4 (15%)	32,54,54	1.02	2 (6%)
9	TA1	B	601	-	68,68,68	2.01	19 (27%)	105,105,105	1.39	11 (10%)

In the following table, the Chirals column lists the number of chiral outliers, the number of chiral centers analysed, the number of these observed in the model and the number defined in the Chemical Component Dictionary. Similar counts are reported in the Torsion and Rings columns. '-' means no outliers of that kind were identified.

Mol	Type	Chain	Res	Link	Chirals	Torsions	Rings
5	ANP	K	501	4	-	3/14/38/38	0/3/3/3
8	GDP	B	600	-	-	4/12/32/32	0/3/3/3
7	GTP	A	503	4	-	3/18/38/38	0/3/3/3
9	TA1	B	601	-	-	9/41/127/127	0/7/7/7

The worst 5 of 38 bond length outliers are listed below:

Mol	Chain	Res	Type	Atoms	Z	Observed(Å)	Ideal(Å)
8	B	600	GDP	O4'-C1'	6.28	1.49	1.41
8	B	600	GDP	O6-C6	5.66	1.34	1.23
9	B	601	TA1	C06-C05	5.27	1.50	1.38
9	B	601	TA1	C18-C10	5.13	1.69	1.57
5	K	501	ANP	PG-O3G	-4.84	1.43	1.56

The worst 5 of 29 bond angle outliers are listed below:

Mol	Chain	Res	Type	Atoms	Z	Observed(°)	Ideal(°)
8	B	600	GDP	C8-N7-C5	9.29	120.69	102.99

Continued on next page...

Continued from previous page...

Mol	Chain	Res	Type	Atoms	Z	Observed(°)	Ideal(°)
5	K	501	ANP	O1B-PB-N3B	9.18	125.29	111.77
8	B	600	GDP	N2-C2-N3	6.29	131.98	119.74
8	B	600	GDP	C5-C6-N1	6.11	124.73	113.95
5	K	501	ANP	O1G-PG-N3B	5.62	120.05	111.77

There are no chirality outliers.

5 of 19 torsion outliers are listed below:

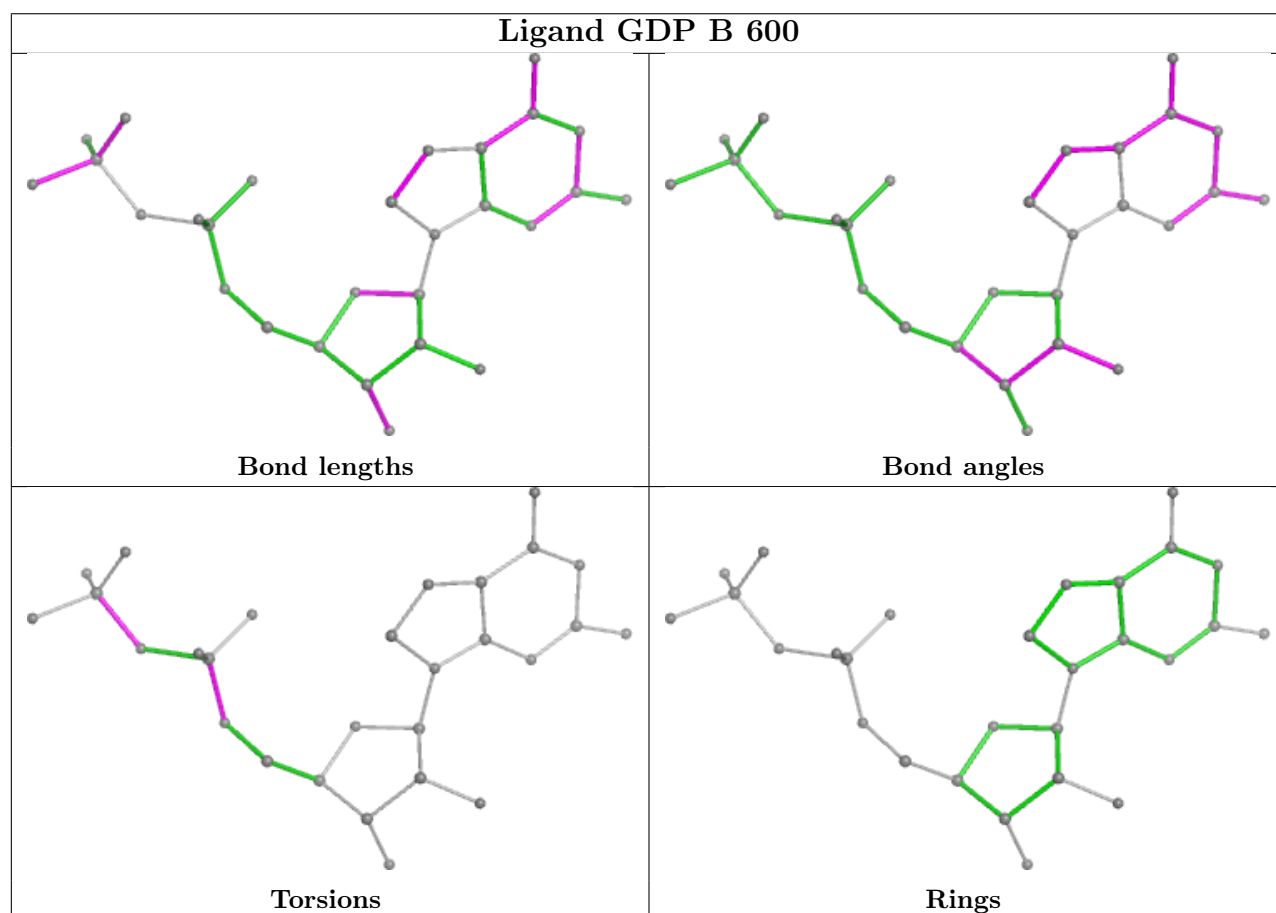
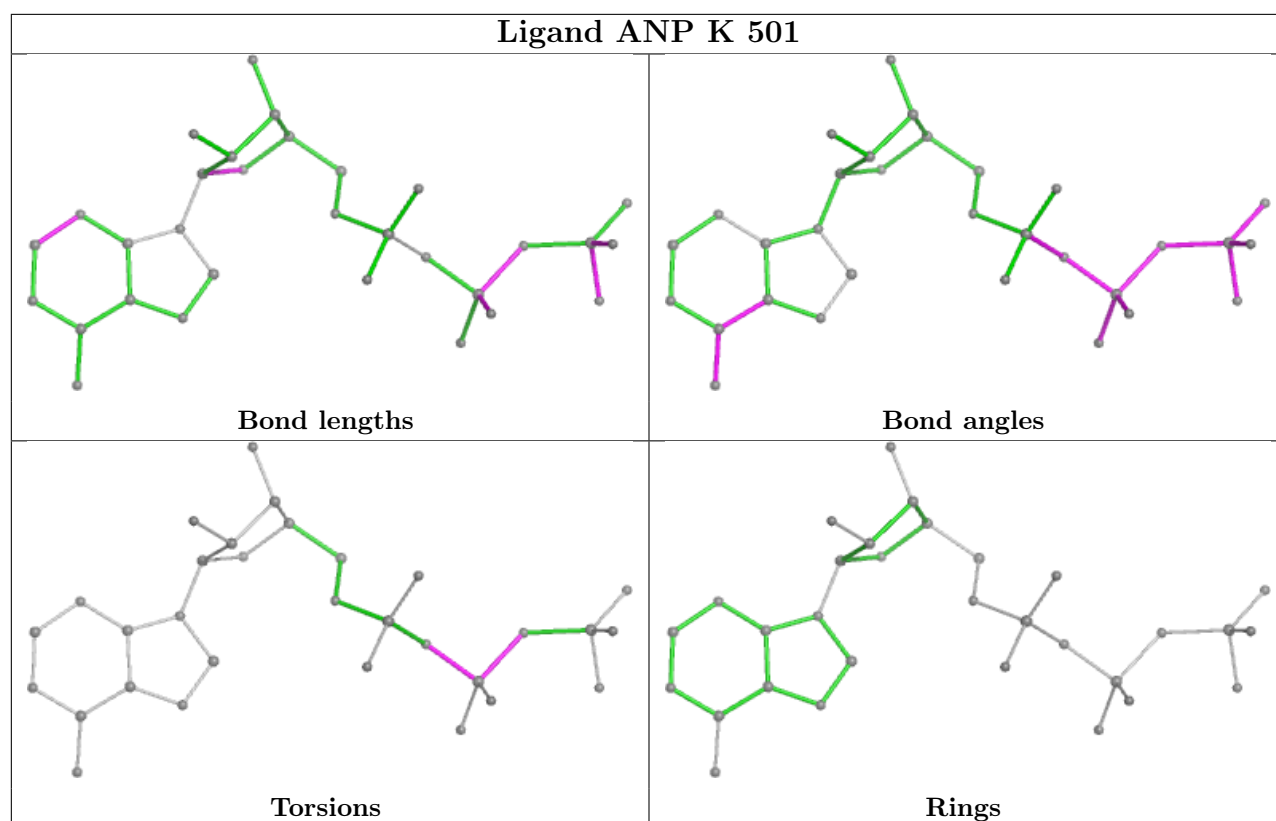
Mol	Chain	Res	Type	Atoms
5	K	501	ANP	PG-N3B-PB-O1B
5	K	501	ANP	PA-O3A-PB-O1B
5	K	501	ANP	PA-O3A-PB-O2B
8	B	600	GDP	PA-O3A-PB-O2B
8	B	600	GDP	C5'-O5'-PA-O3A

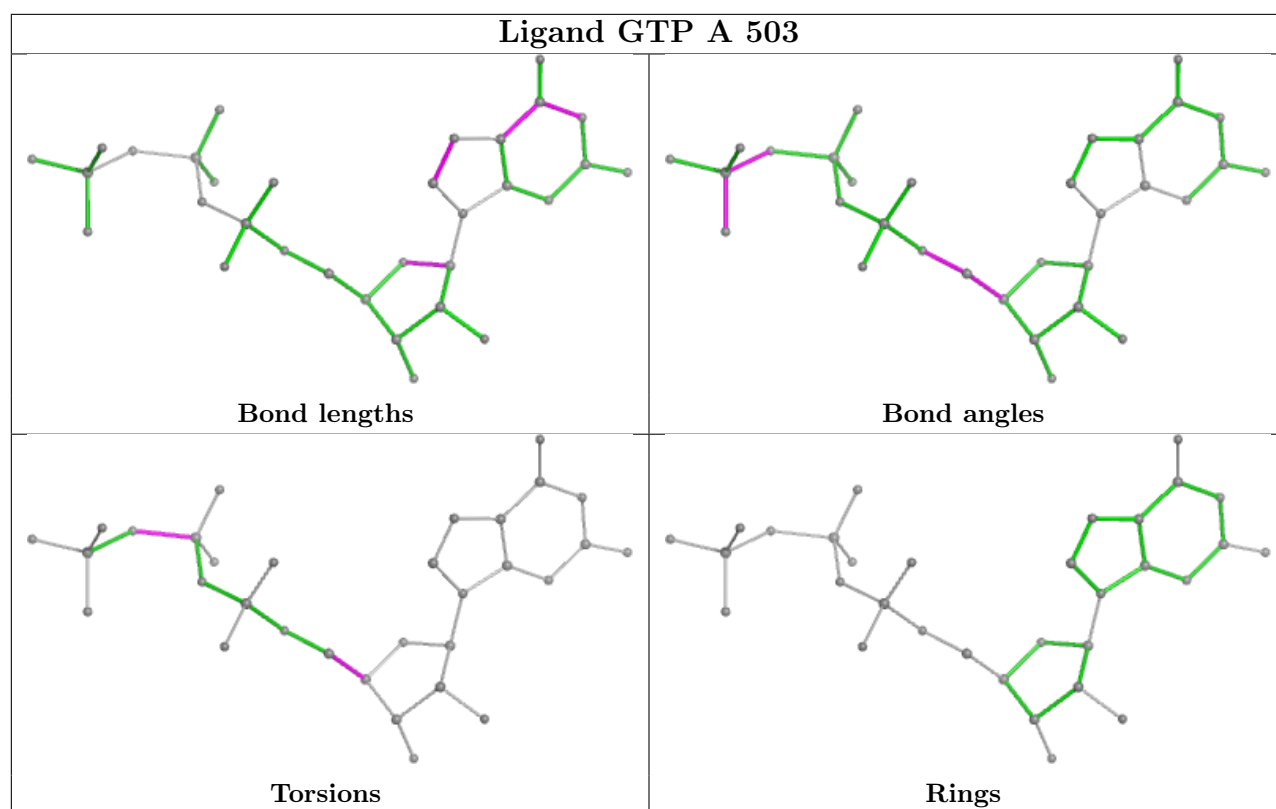
There are no ring outliers.

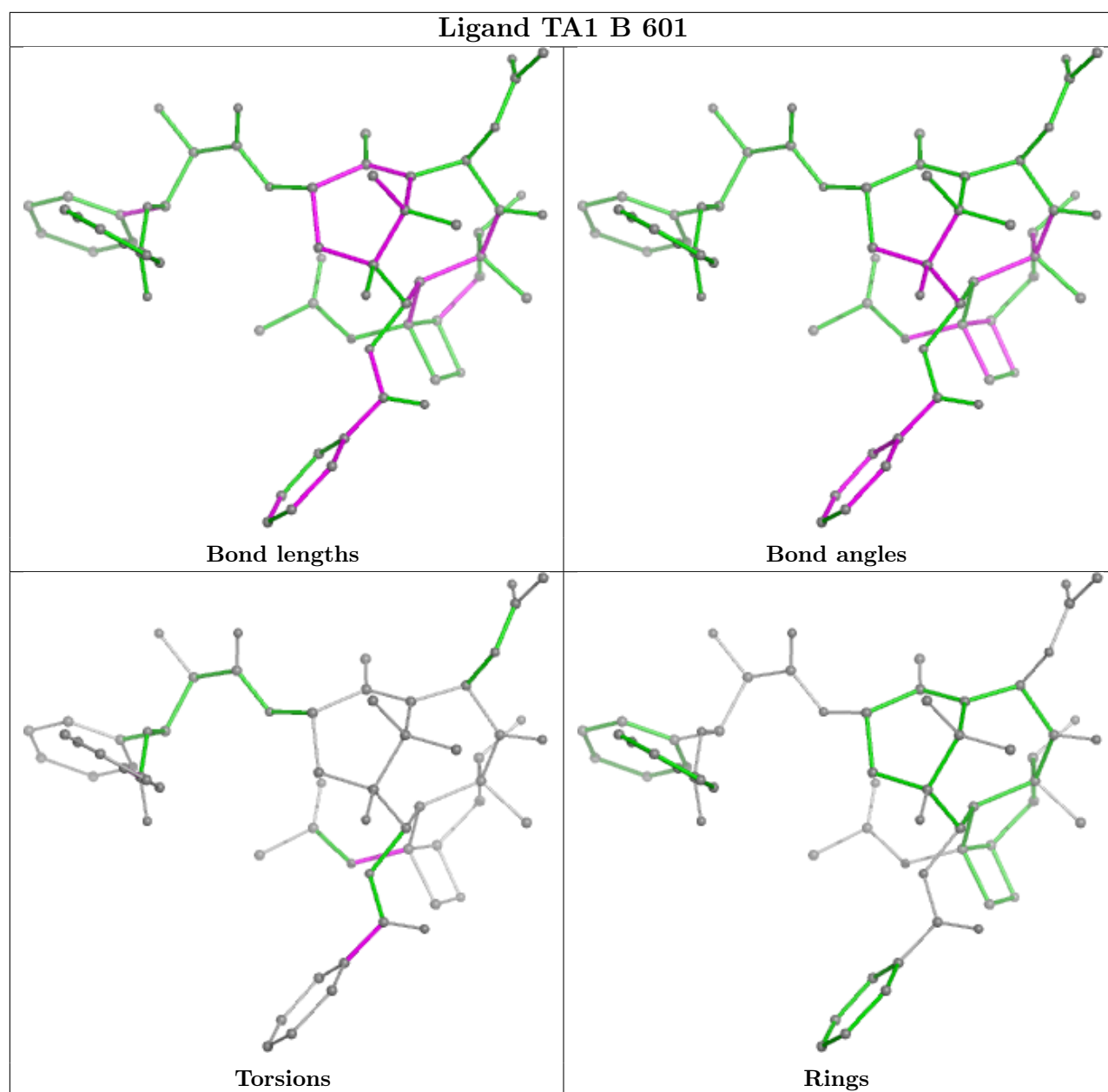
3 monomers are involved in 10 short contacts:

Mol	Chain	Res	Type	Clashes	Symm-Clashes
5	K	501	ANP	4	0
7	A	503	GTP	3	0
9	B	601	TA1	3	0

The following is a two-dimensional graphical depiction of Mogul quality analysis of bond lengths, bond angles, torsion angles, and ring geometry for all instances of the Ligand of Interest. In addition, ligands with molecular weight > 250 and outliers as shown on the validation Tables will also be included. For torsion angles, if less than 5% of the Mogul distribution of torsion angles is within 10 degrees of the torsion angle in question, then that torsion angle is considered an outlier. Any bond that is central to one or more torsion angles identified as an outlier by Mogul will be highlighted in the graph. For rings, the root-mean-square deviation (RMSD) between the ring in question and similar rings identified by Mogul is calculated over all ring torsion angles. If the average RMSD is greater than 60 degrees and the minimal RMSD between the ring in question and any Mogul-identified rings is also greater than 60 degrees, then that ring is considered an outlier. The outliers are highlighted in purple. The color gray indicates Mogul did not find sufficient equivalents in the CSD to analyse the geometry.







5.7 Other polymers [i](#)

There are no such residues in this entry.

5.8 Polymer linkage issues [i](#)

There are no chain breaks in this entry.

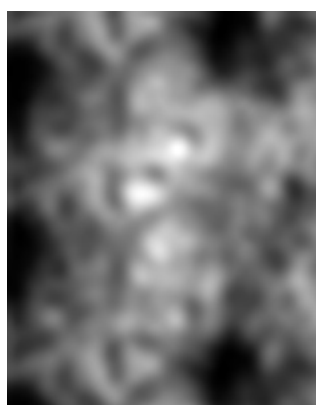
6 Map visualisation [i](#)

This section contains visualisations of the EMDB entry EMD-3780. These allow visual inspection of the internal detail of the map and identification of artifacts.

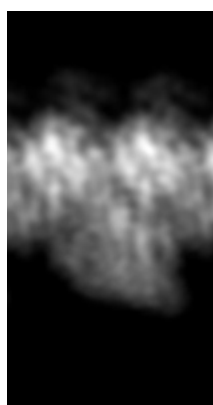
No raw map or half-maps were deposited for this entry and therefore no images, graphs, etc. pertaining to the raw map can be shown.

6.1 Orthogonal projections [i](#)

6.1.1 Primary map



X



Y

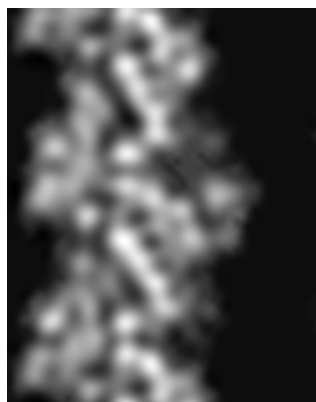


Z

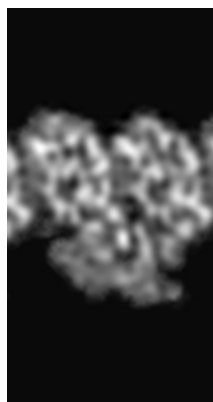
The images above show the map projected in three orthogonal directions.

6.2 Central slices [i](#)

6.2.1 Primary map



X Index: 65



Y Index: 27



Z Index: 34

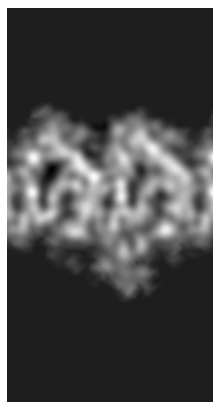
The images above show central slices of the map in three orthogonal directions.

6.3 Largest variance slices [i](#)

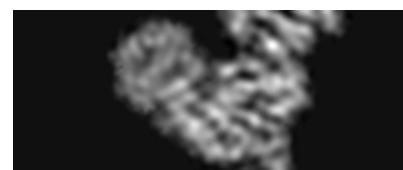
6.3.1 Primary map



X Index: 64



Y Index: 22

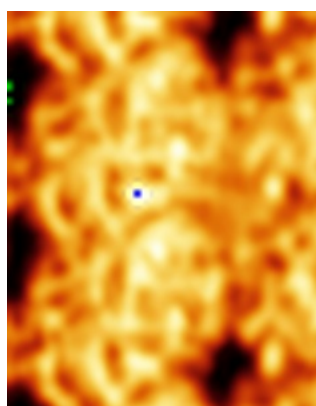


Z Index: 44

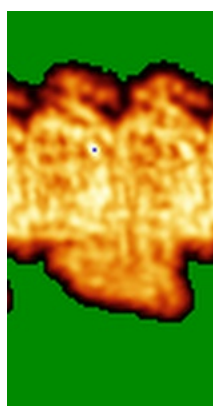
The images above show the largest variance slices of the map in three orthogonal directions.

6.4 Orthogonal standard-deviation projections (False-color) [i](#)

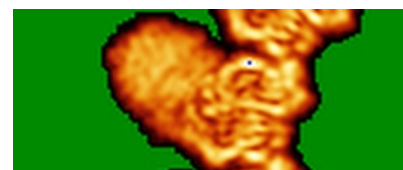
6.4.1 Primary map



X



Y

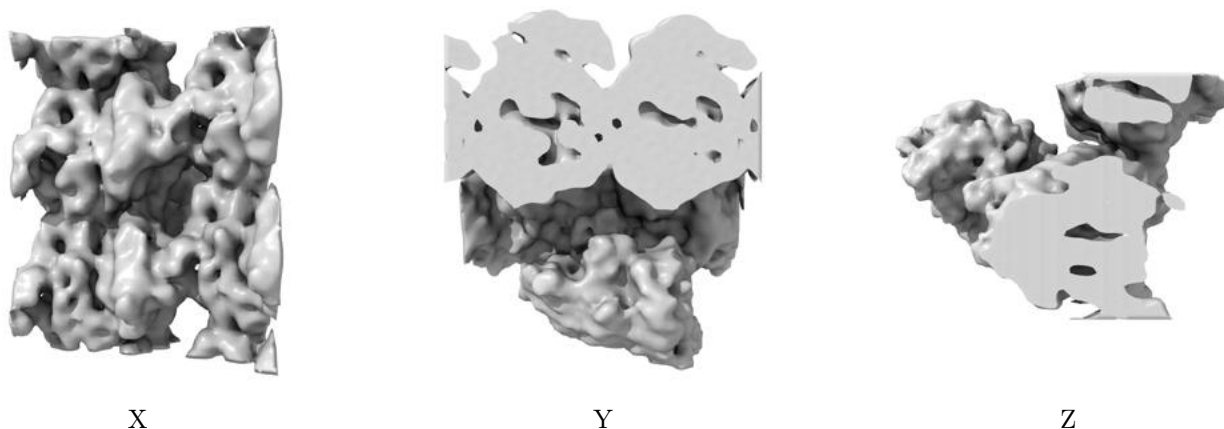


Z

The images above show the map standard deviation projections with false color in three orthogonal directions. Minimum values are shown in green, max in blue, and dark to light orange shades represent small to large values respectively.

6.5 Orthogonal surface views [i](#)

6.5.1 Primary map



The images above show the 3D surface view of the map at the recommended contour level 0.05. These images, in conjunction with the slice images, may facilitate assessment of whether an appropriate contour level has been provided.

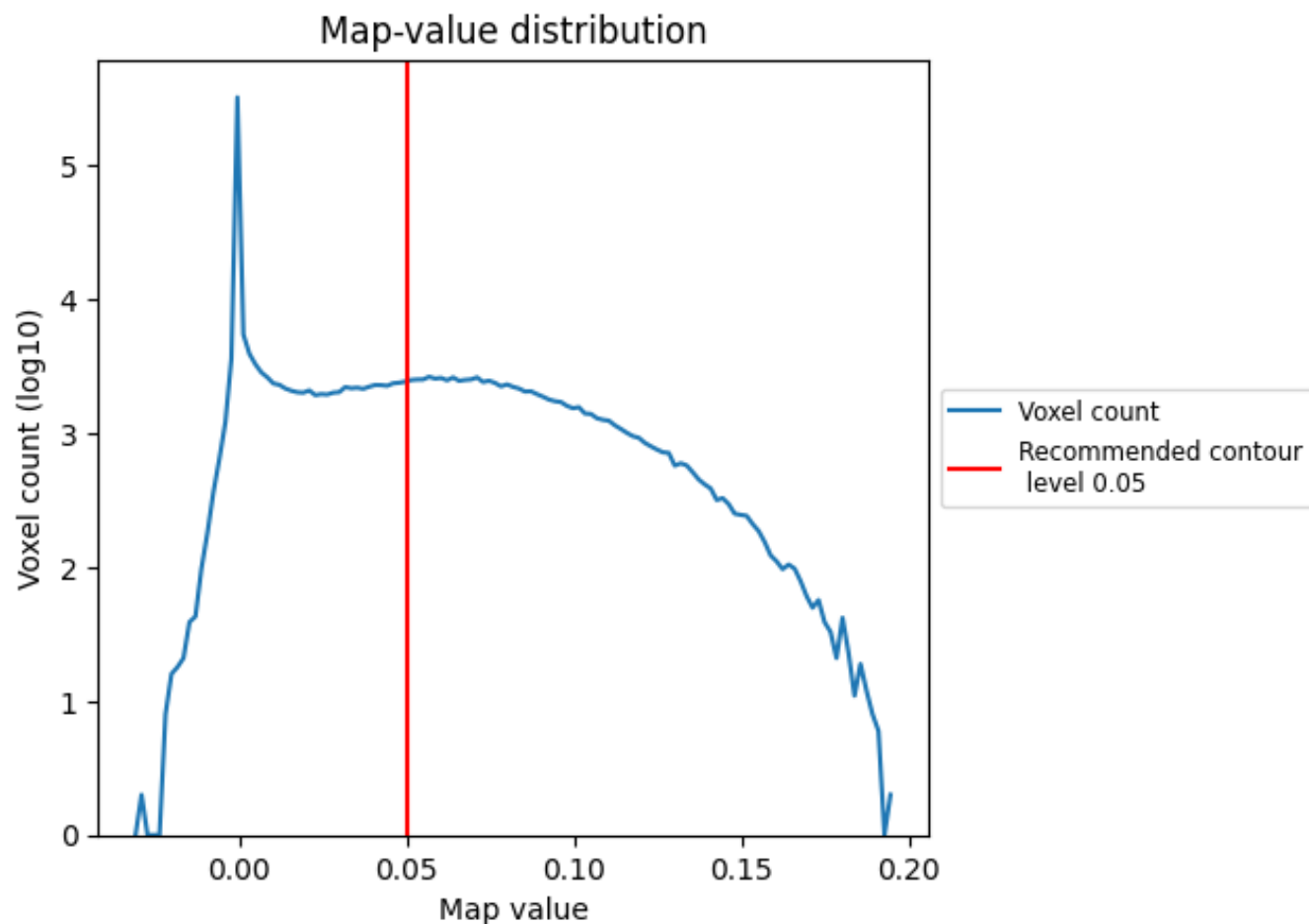
6.6 Mask visualisation [i](#)

This section was not generated. No masks/segmentation were deposited.

7 Map analysis [i](#)

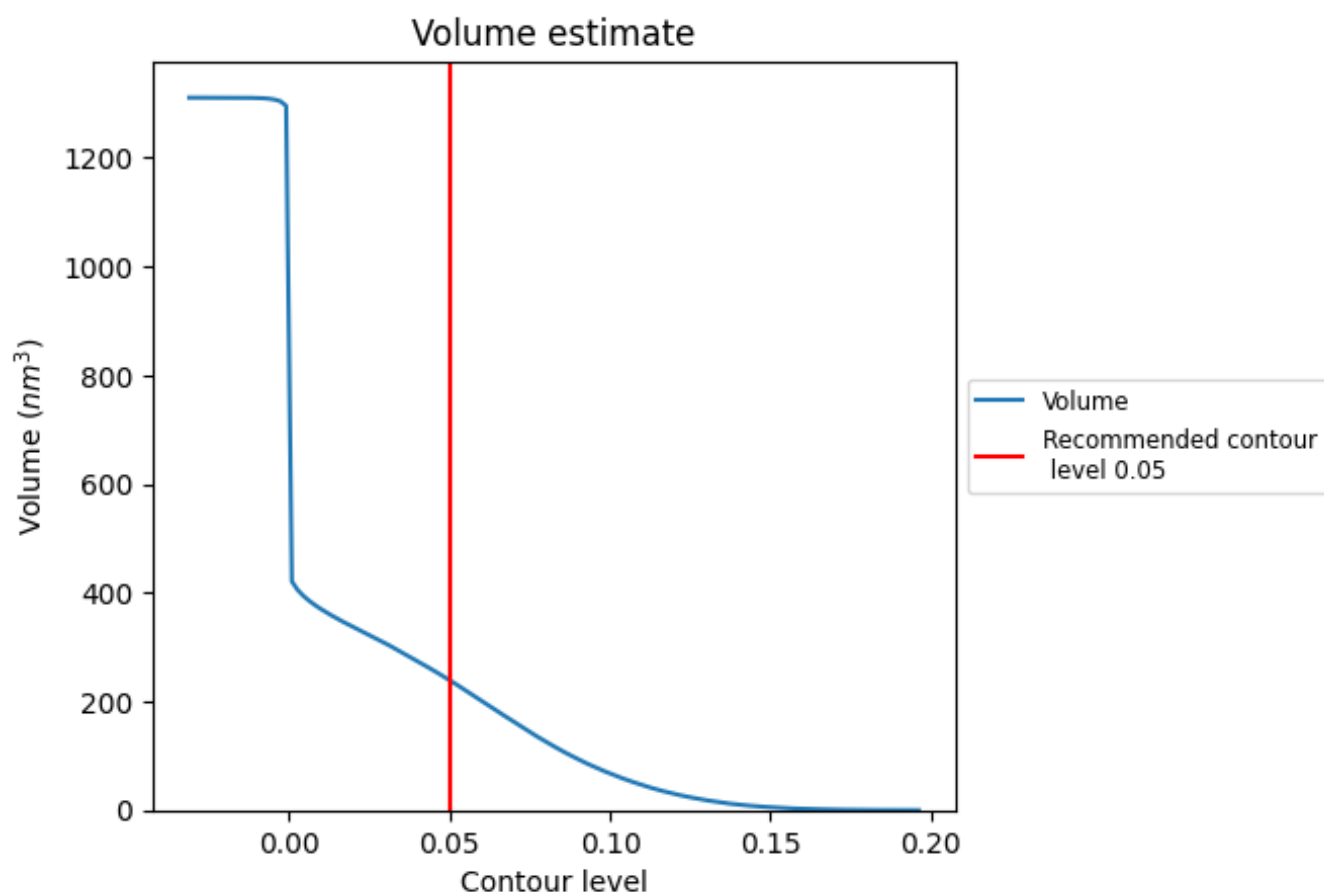
This section contains the results of statistical analysis of the map.

7.1 Map-value distribution [i](#)



The map-value distribution is plotted in 128 intervals along the x-axis. The y-axis is logarithmic. A spike in this graph at zero usually indicates that the volume has been masked.

7.2 Volume estimate [i](#)



The volume at the recommended contour level is 239 nm^3 ; this corresponds to an approximate mass of 216 kDa.

The volume estimate graph shows how the enclosed volume varies with the contour level. The recommended contour level is shown as a vertical line and the intersection between the line and the curve gives the volume of the enclosed surface at the given level.

7.3 Rotationally averaged power spectrum [i](#)

This section was not generated. The rotationally averaged power spectrum is only generated for cubic maps.

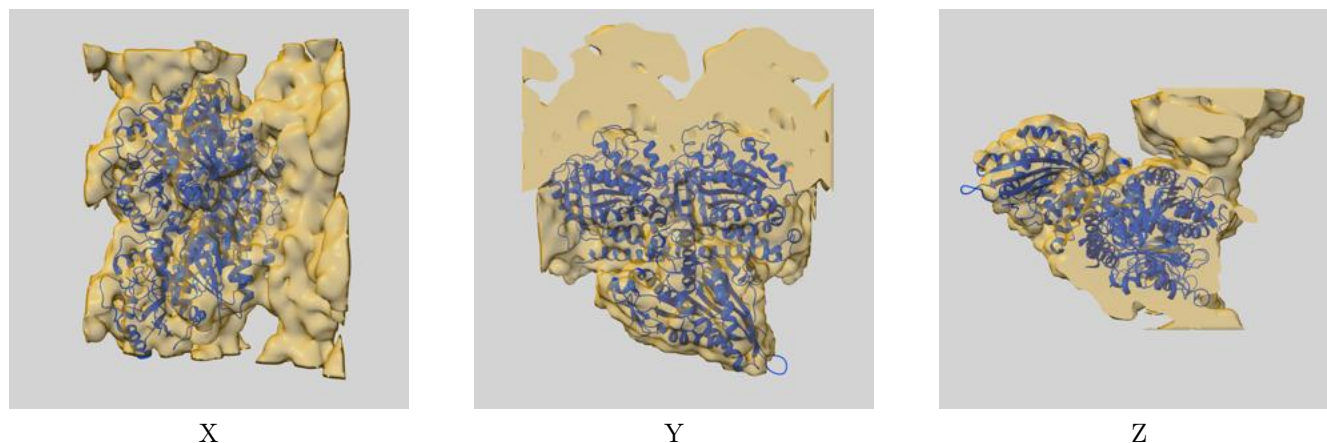
8 Fourier-Shell correlation

This section was not generated. No FSC curve or half-maps provided.

9 Map-model fit [i](#)

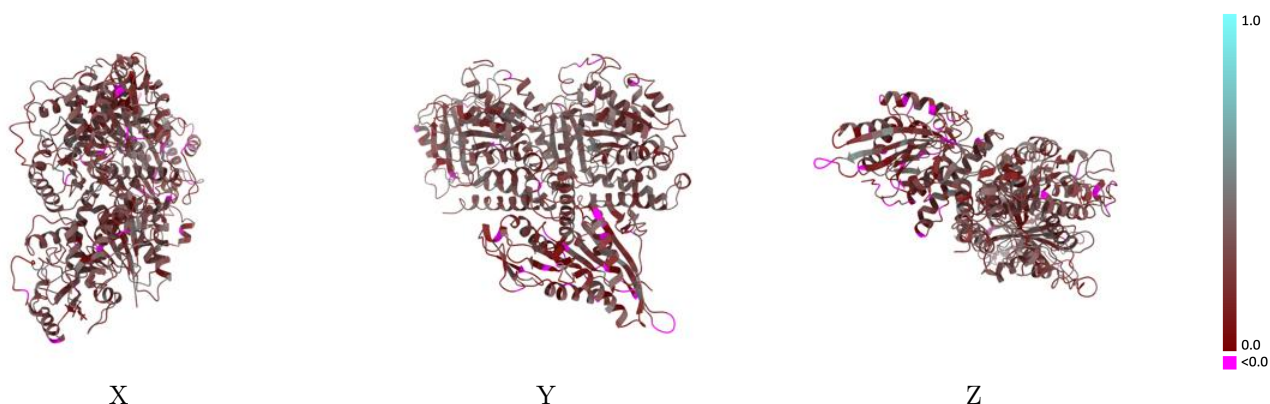
This section contains information regarding the fit between EMDB map EMD-3780 and PDB model 5OCU. Per-residue inclusion information can be found in [section 3](#) on [page 7](#).

9.1 Map-model overlay [i](#)



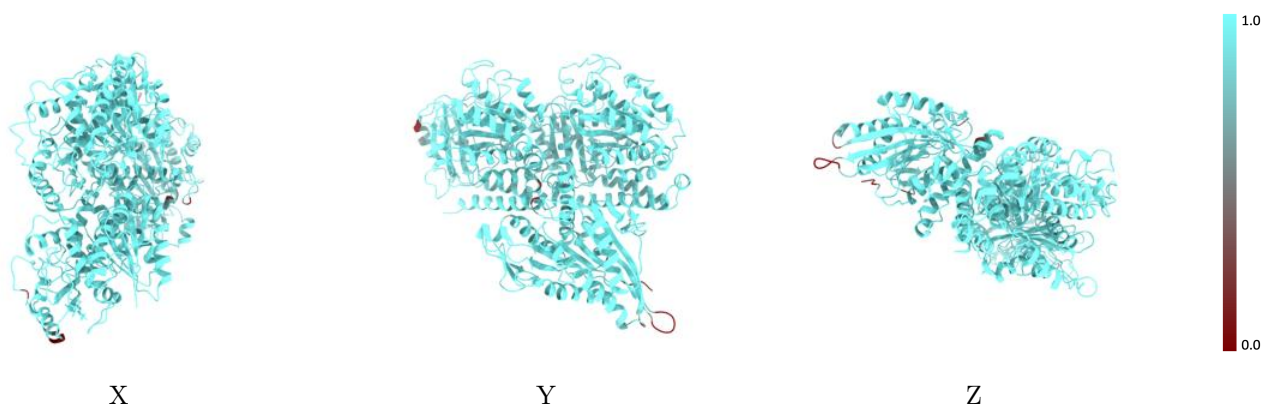
The images above show the 3D surface view of the map at the recommended contour level 0.05 at 50% transparency in yellow overlaid with a ribbon representation of the model coloured in blue. These images allow for the visual assessment of the quality of fit between the atomic model and the map.

9.2 Q-score mapped to coordinate model [i](#)



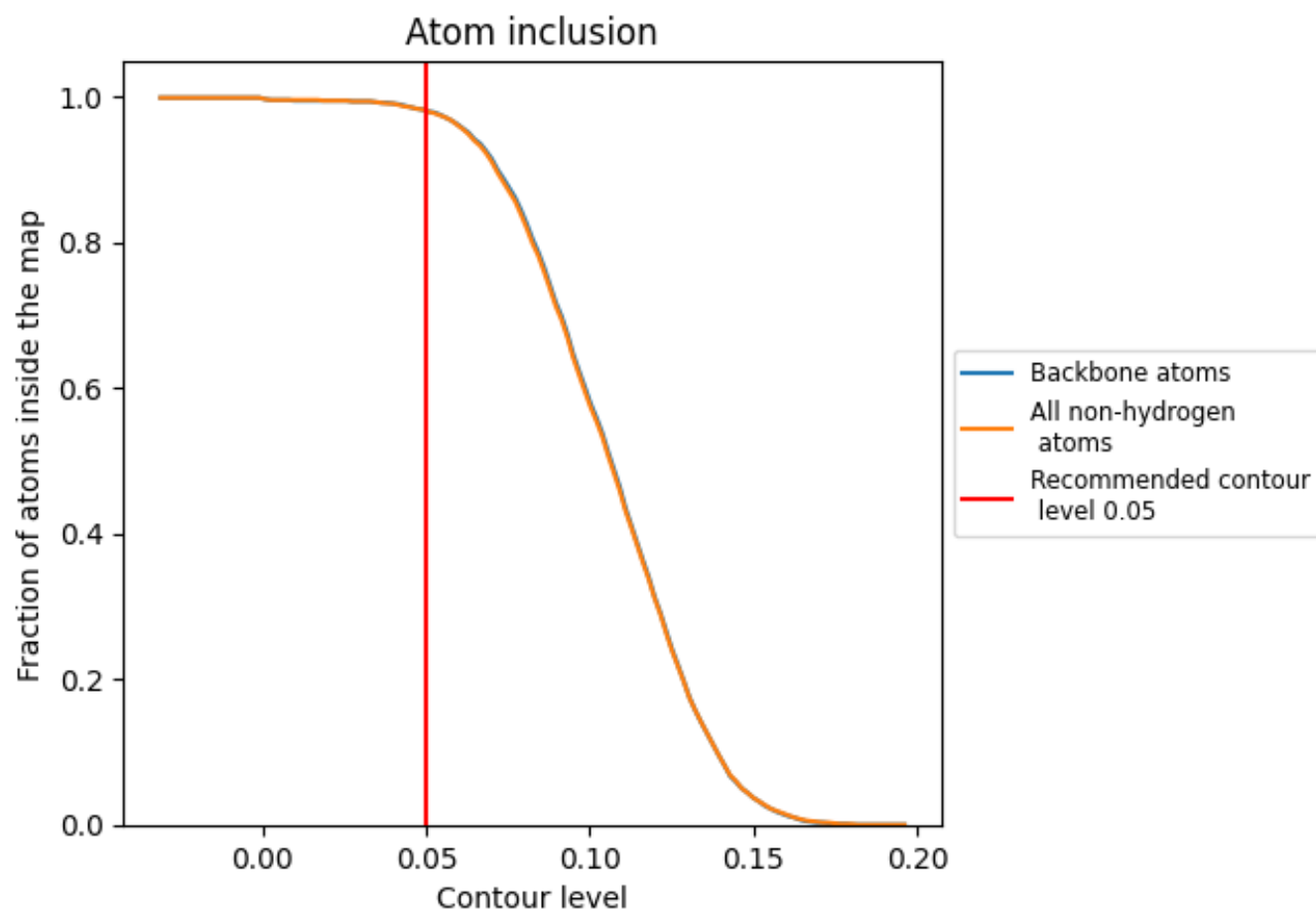
The images above show the model with each residue coloured according to its Q-score. This shows their resolvability in the map with higher Q-score values reflecting better resolvability. Please note: Q-score is calculating the resolvability of atoms, and thus high values are only expected at resolutions at which atoms can be resolved. Low Q-score values may therefore be expected for many entries.

9.3 Atom inclusion mapped to coordinate model [i](#)



The images above show the model with each residue coloured according to its atom inclusion. This shows to what extent they are inside the map at the recommended contour level (0.05).

9.4 Atom inclusion [i](#)



At the recommended contour level, 98% of all backbone atoms, 98% of all non-hydrogen atoms, are inside the map.

9.5 Map-model fit summary ⓘ

The table lists the average atom inclusion at the recommended contour level (0.05) and Q-score for the entire model and for each chain.

Chain	Atom inclusion	Q-score
All	<div></div> 0.9810	<div></div> 0.2600
A	<div></div> 0.9880	<div></div> 0.2840
B	<div></div> 0.9970	<div></div> 0.2840
K	<div></div> 0.9490	<div></div> 0.1990

